



**Count on it.**

# Parts Catalog

## Blower and Drive Kit

**72in E-Z Vac™ for Z Master® Mower**

Model No. 78554—Serial No. 410000000 and Up



# Ordering Replacement Parts

To order replacement parts, please supply the part number, the quantity, and the description of each part desired.

## Understanding Reference Numbers

Each identified part in an illustration has a reference number. The reference number for a part also appears in the parts list, along with other information about the part.

This catalog uses two special reference number formats, one to indicate parts in a service assembly and another to indicate the quantity of a given part in an illustration.

## Service Assembly Reference Numbers

Parts in service assemblies have reference numbers in the form a:b. The a represents the reference number of the entire service assembly and the b represents a sequential number unique to each part within the service assembly.

For example, a wheel assembly might be identified by reference number 6, the tire by 6:1, the valve by 6:2, and the wheel by 6:3. When you order the assembly identified by reference number 6, you receive all parts identified by reference numbers 6:1, 6:2, and 6:3. However, you may also order any part individually. Reference numbers of this type appear in illustration and in parts lists.

## Reference Numbers Indicating Quantity

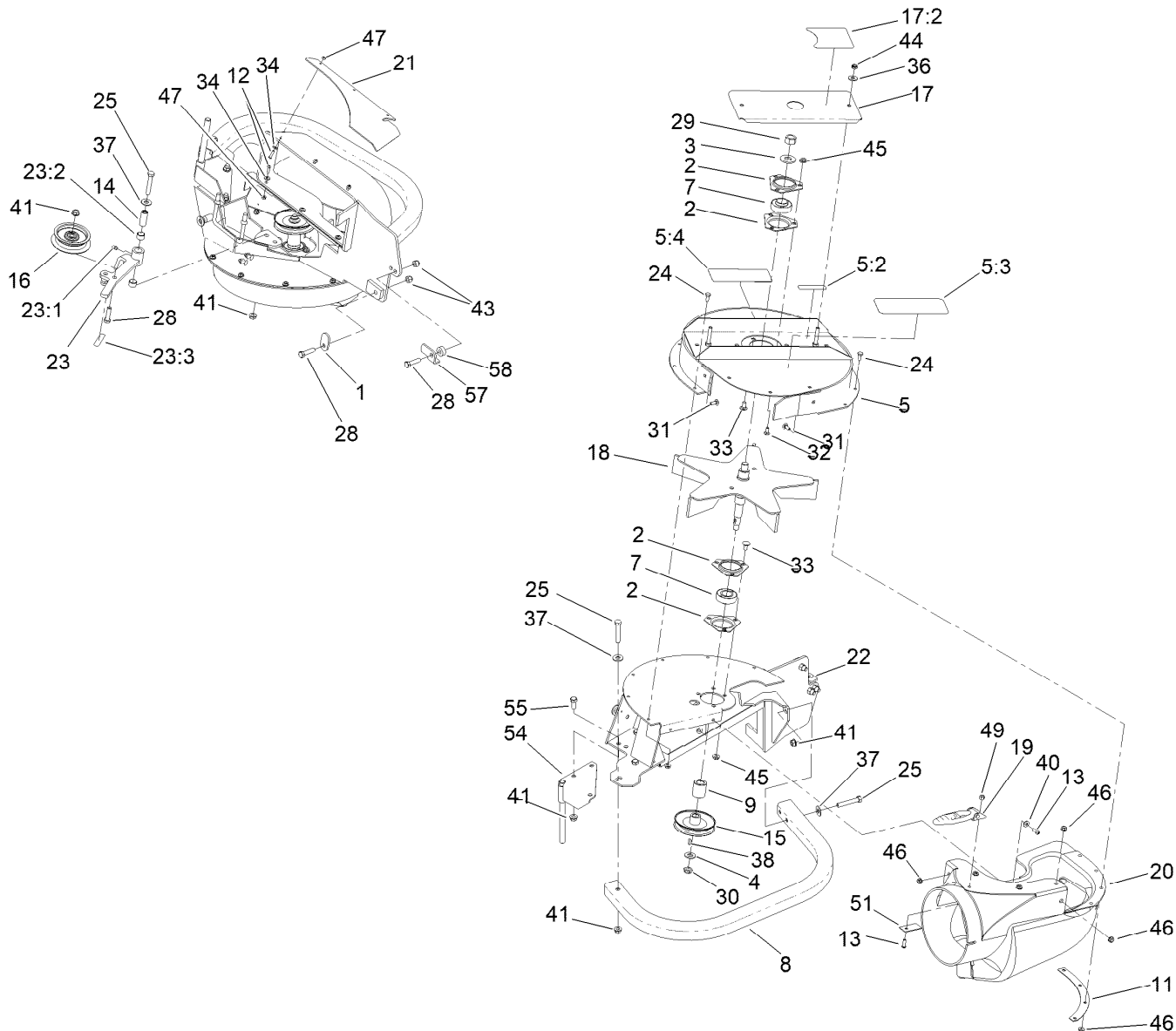
In an illustration, if a reference number indicates more than one part, the reference number has the form nX y. The n represents the quantity of the part, the X is the multiplication symbol, and the y represents the reference number.

For example, in an illustration, the reference number 2X 37 means that two of the parts identified by reference number 37 are indicated.

# Contents

Blower Drive Assembly ..... 4

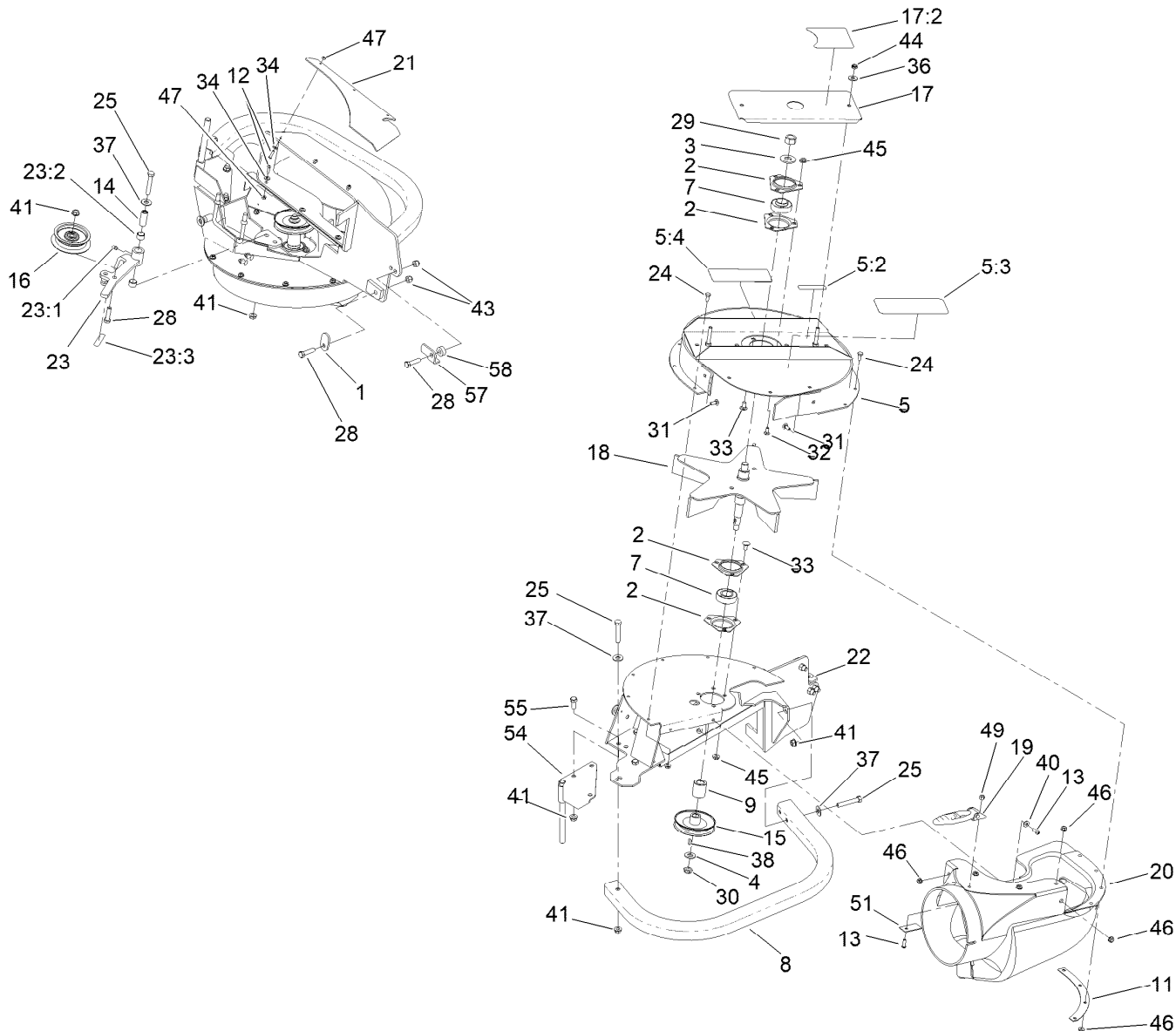
Belt, Cover and Pulley Assembly..... 6



## Blower Drive Assembly

Ref.	Part Number	Qty.	Description
1	1-353054	1	Latch-Catcher, Grass
2	1-513013	4	Housing-Flange
3	1-513208	1	Washer-Spring
4	3256-26	1	Washer-Flat
5	145-8454	1	Housing W/Decal-Upper
5:2	127-2857	1	Decal - Vib, Pinch Warning
5:3	112-1770	1	Decal
5:4	126-9451	1	Decal-Warning
7	1-653346	2	Bearing
8	103-0458-01	1	Bumper
9	103-0460	1	Spacer
11	103-0461-03	1	Plate-Backing, Blower
12	3274-39	6	Screw-HSBH
13	3274-69	4	Screw-HSBH
14	1-603044	1	Bushing
15	103-0456	1	Sheave
16	103-1103	1	Idler-Flat
17	145-8453	1	Cover-Bearing W/Decal
17:2	126-9595	1	Decal-Warning
18	103-0455	1	Impeller
19	103-2898	2	Latch-Rubber

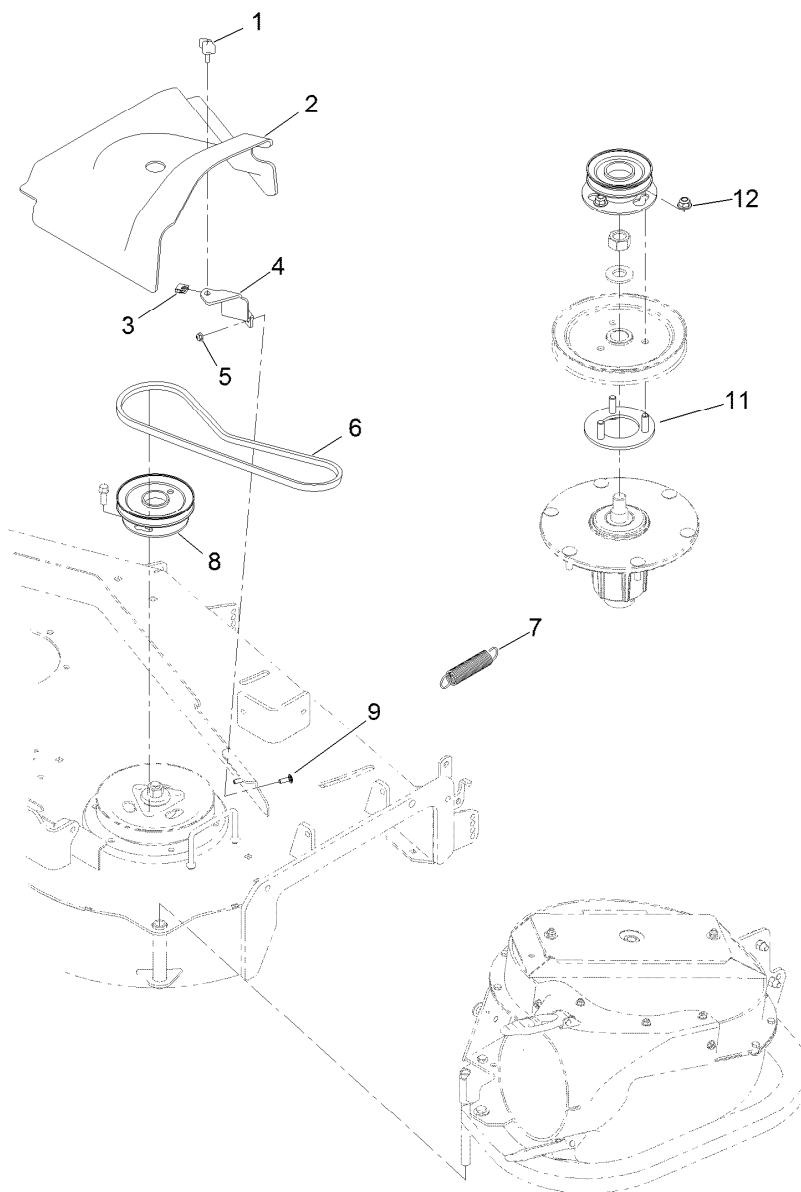
Ref.	Part Number	Qty.	Description
20	109-1134	1	Chute-Blower
21	110-0328-03	1	Plate-Bottom
22	110-0329-03	1	Mount-Blower
23	145-8455	1	Idler Arm W/Bushings
23:1	302-19	1	Fitting-Grease
23:2	1-653600	2	Bushing
23:3	126-4659	1	Decal-Warning
24	321-3	10	Screw-HH
25	323-11	4	Screw-HH
28	323-8	3	Screw-HH
29	3219-6	1	Nut-Hex
30	3296-28	1	Nut-Lock, NI
31	3229-1	2	Screw-CARR
32	3229-11	3	Screw-CARR
33	3230-18	6	Screw-CARR
34	3256-16	6	Washer-Flat
36	3256-3	2	Washer-Flat
37	3256-4	4	Washer-Flat
38	3257-32	1	Key-Woodruff
40	3256-22	2	Washer-Flat
41	3290-357	8	Nut-HSF



## Blower Drive Assembly (continued)

Ref.	Part Number	Qty.	Description
43	3296-39	2	Nut-Lock, NI
44	3296-47	2	Nut-Lock,NI
45	32128-20	6	Nut-HF
46	32128-33	17	Nut-HF
47	3296-2	6	Nut-Lock, NI
49	3296-42	2	Nut-Lock, NI

Ref.	Part Number	Qty.	Description
51	103-3093	2	Plate-Backing
54	103-0445-03	1	Pin-Mount
55	323-5	3	Screw-HH
57	112-1787	1	Latch-Stop
58	104-8426	1	Spacer



## Belt, Cover and Pulley Assembly

Ref.	Part Number	Qty.	Description
1	98-8332	1	Knob
2	117-0340	1	Belt Cover
3	609900	1	Nut-Speed
4	117-0342-01	1	Bracket-Cover, Belt
5	104-7201	2	Nut-HF, NI
6	112-2384	1	Belt-V
7	1-603693	1	Spring-Extension
8	112-7202-03	1	Pulley-Blower
9	1-807512	2	Bolt-CARR
11	140-4906	1	Pulley Mount ASM
12	104-8301	3	Nut-HF, NI

**Notes:**



**Count on it.**