



**Count on it.**

**Parts Catalog**

**48in and 52in E-Z Vac™ Twin  
Bagging System**

**Z Master® G3 Mower**

Model No. 78562—Serial No. 412200000 and Up



# Ordering Replacement Parts

To order replacement parts, please supply the part number, the quantity, and the description of each part desired.

## Understanding Reference Numbers

Each identified part in an illustration has a reference number. The reference number for a part also appears in the parts list, along with other information about the part.

This catalog uses two special reference number formats, one to indicate parts in a service assembly and another to indicate the quantity of a given part in an illustration.

## Service Assembly Reference Numbers

Parts in service assemblies have reference numbers in the form a:b. The a represents the reference number of the entire service assembly and the b represents a sequential number unique to each part within the service assembly.

For example, a wheel assembly might be identified by reference number 6, the tire by 6:1, the valve by 6:2, and the wheel by 6:3. When you order the assembly identified by reference number 6, you receive all parts identified by reference numbers 6:1, 6:2, and 6:3. However, you may also order any part individually. Reference numbers of this type appear in illustration and in parts lists.

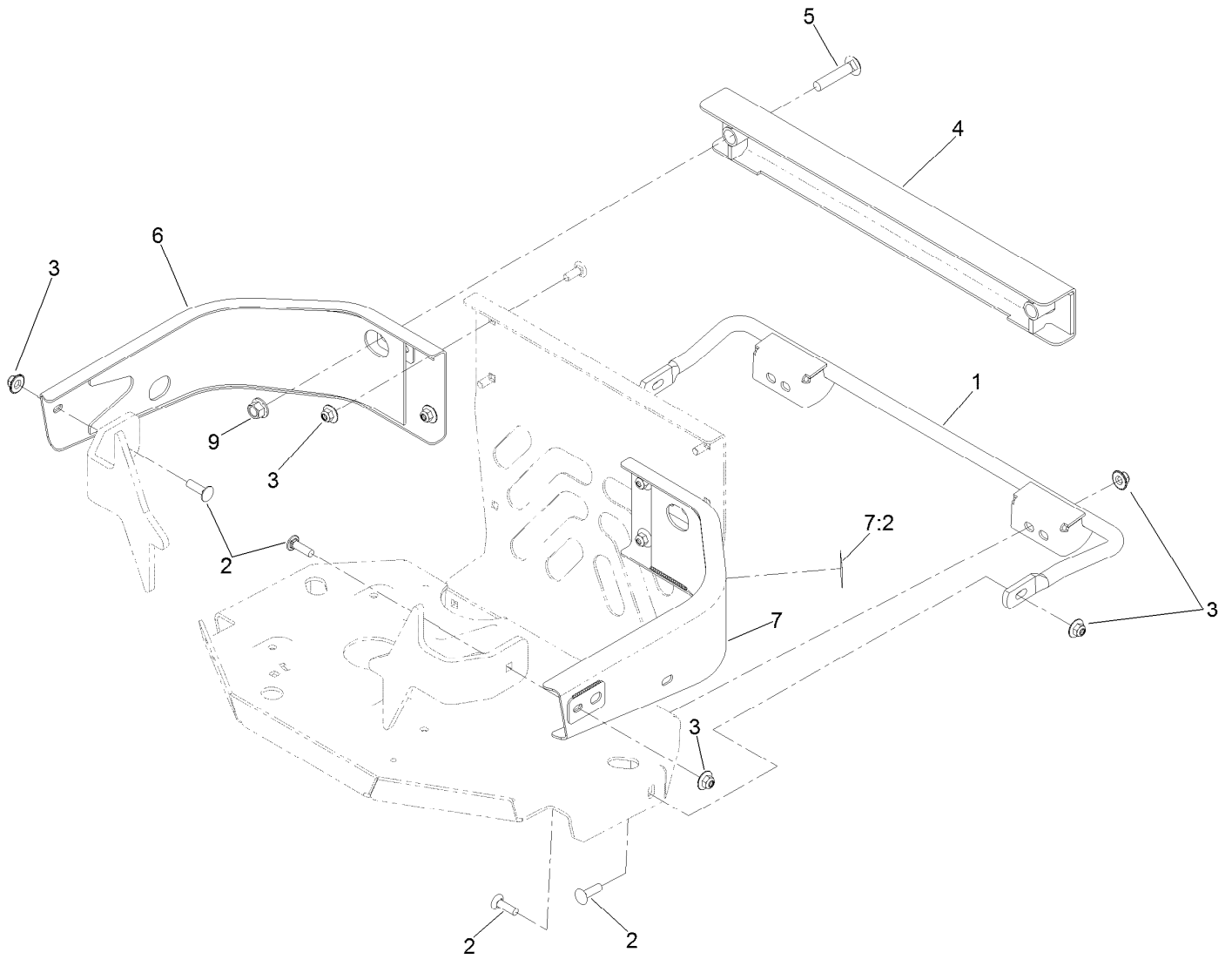
## Reference Numbers Indicating Quantity

In an illustration, if a reference number indicates more than one part, the reference number has the form nX y. The n represents the quantity of the part, the X is the multiplication symbol, and the y represents the reference number.

For example, in an illustration, the reference number 2X 37 means that two of the parts identified by reference number 37 are indicated.

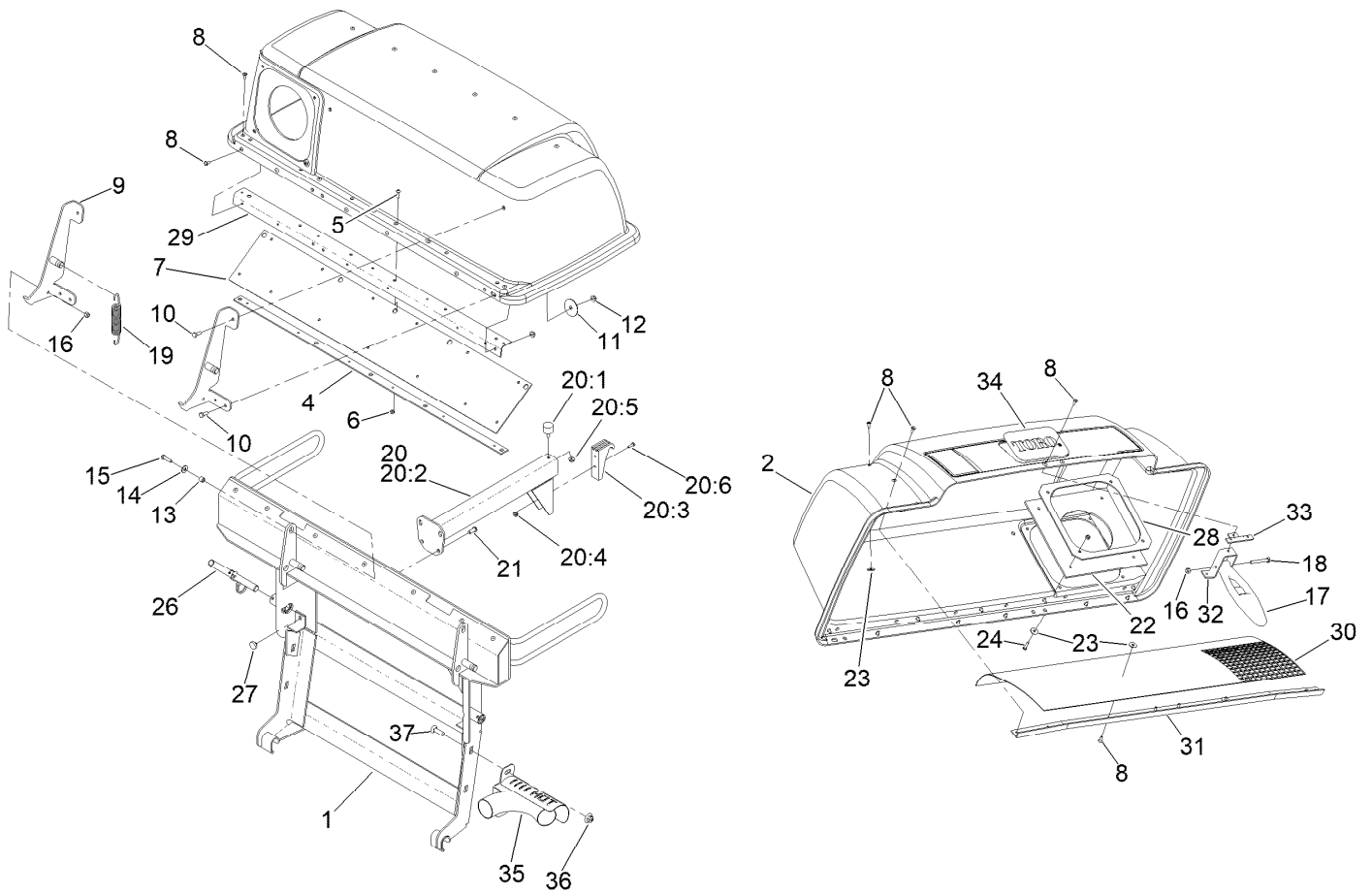
# Contents

- Bagger Mount Assembly ..... 4
- Twin Hood and Frame Assembly ..... 5
- Twin Hood Assembly No. 112-2316 ..... 6
- Bag and Tube Assembly ..... 8
- Weight Assembly ..... 9



## Bagger Mount Assembly

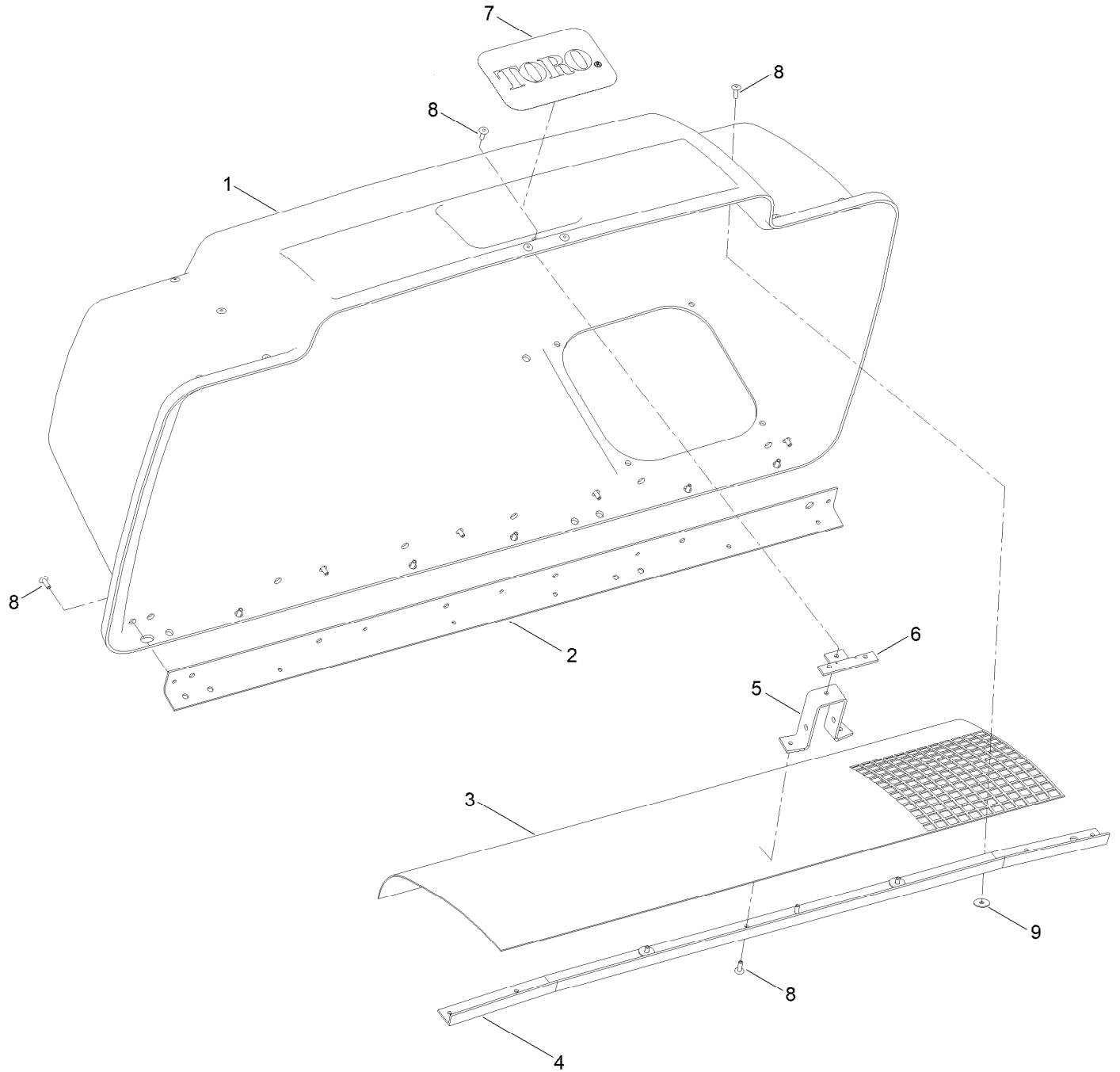
Ref.	Part Number	Qty.	Description
1	109-9248	1	Mount-Bagger, Lower
2	3231-28	6	Screw-CARR
3	109-6658	10	Nut-Flange, NI
4	116-0473-03	1	Mount-Bagger, Upper
5	3233-34	2	Screw-CARR
6	116-0057-03	1	Bumper-RH
7	116-0180	1	LH Bumper ASM
7:2	106-5517	1	Decal-Warning
9	99-5107	2	Nut-Lock



## Twin Hood and Frame Assembly

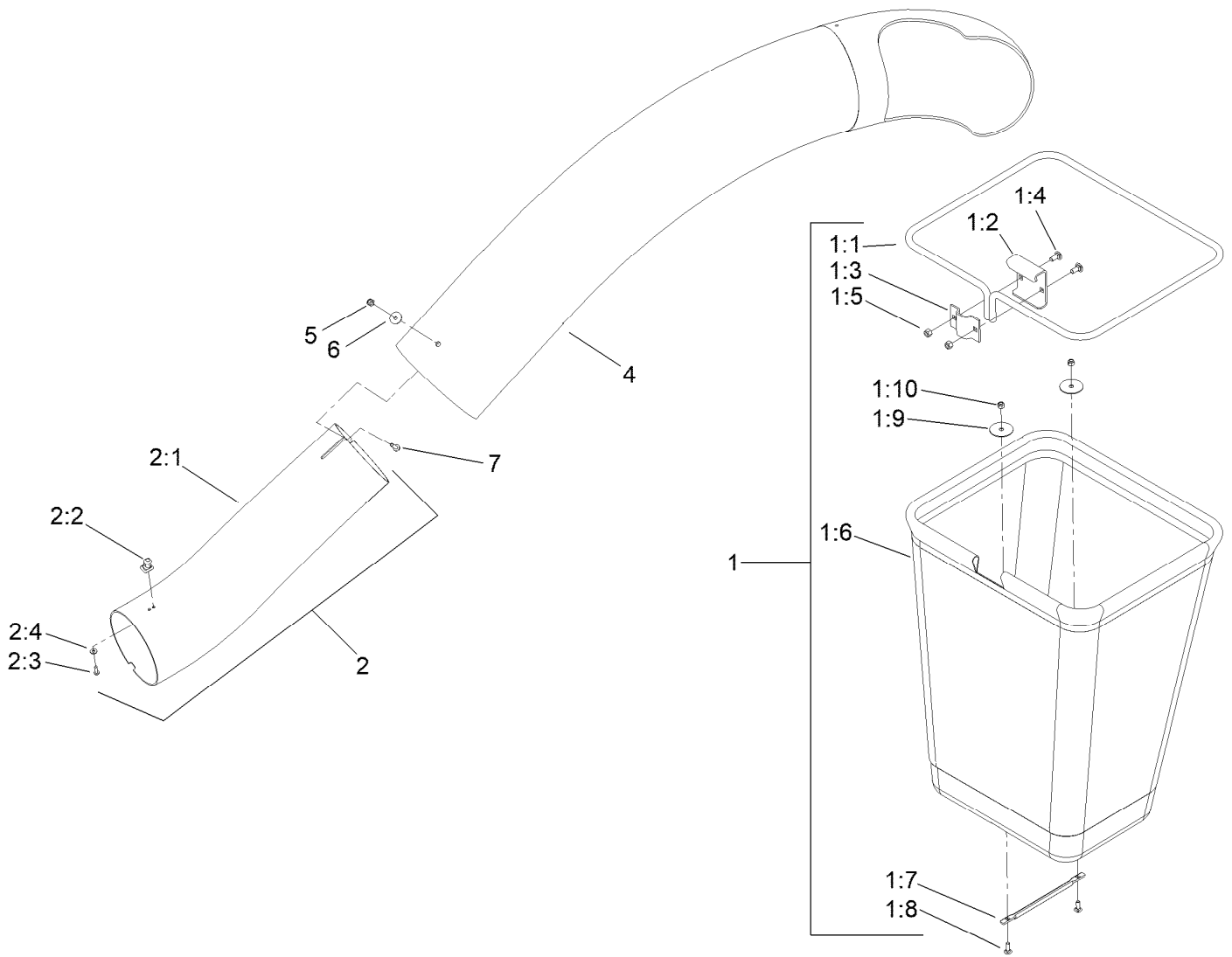
<i>Ref.</i>	<i>Part Number</i>	<i>Qty.</i>	<i>Description</i>	<i>Ref.</i>	<i>Part Number</i>	<i>Qty.</i>	<i>Description</i>
1	109-8705-03	1	Frame-Bag, Twin	20:3	1-653404	1	Catch
2	112-2316	1	Hood ASM	20:4	3290-148	2	Nut-HF
4	1-653528-03	1	Plate-Backing	20:5	32128-33	1	Nut-HF
5	1-803075	6	Screw-Head, Truss	20:6	3290-500	2	Screw-PPH
6	3296-2	10	Nut-Lock, NI	21	3274-55	4	Screw-HSBH
7	1-653425	1	Seal	22	1-653561	1	Seal-Chute
8	114439	45	Rivet-Blind	23	3256-61	14	Washer-Flat
9	1-652395-03	2	Hinge ASM	24	3250-27	4	Screw-PPH
10	321-4	6	Screw-HH	26	116-0458	2	Pin-Mount, Bagger
11	1-653036	2	Washer	27	1-513658	2	Bumper
12	32128-33	6	Nut-HF	28	1-653598-03	1	Clamp-Seal
13	1-633545	2	Spacer	29	1-653397-03	1	Stiffener-Bagger, Top
14	3256-2	2	Washer-Flat	30	114967	1	Screen-Bagger
15	321-6	2	Screw-HH	31	1-653400-03	1	Support-Screen
16	3296-42	3	Nut-Lock, NI	32	1-653519	1	Anchor-Latch
17	1-653403	1	Latch	33	1-653535	1	Reinforcement-Latch
18	321-11	1	Screw-HH	34	99-4693	1	Decal
19	1-653544	2	Spring-Extension	35	116-2804	1	Exhaust Diverter ASM
20	103-5166	1	Bag Support ASM	36	109-6658	2	Nut-Flange, NI
20:1	1-523420	1	Bumper	37	3231-28	2	Screw-CARR
20:2	103-5124-03	1	Support-Bag				

# Twin Hood Assembly No. 112-2316



## Twin Hood Assembly No. 112-2316 (continued)

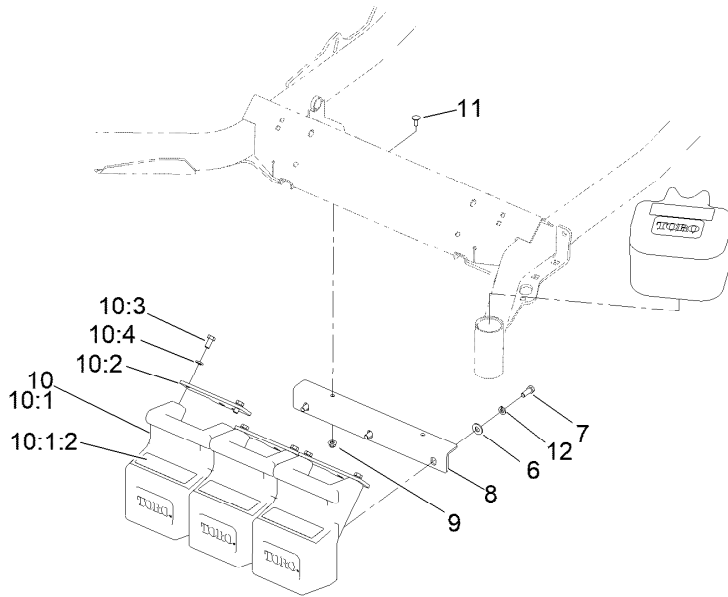
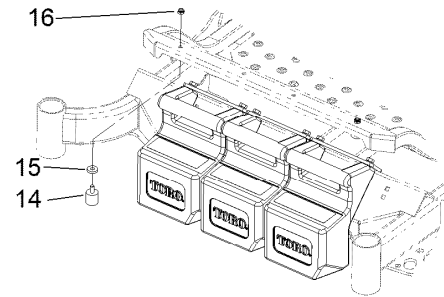
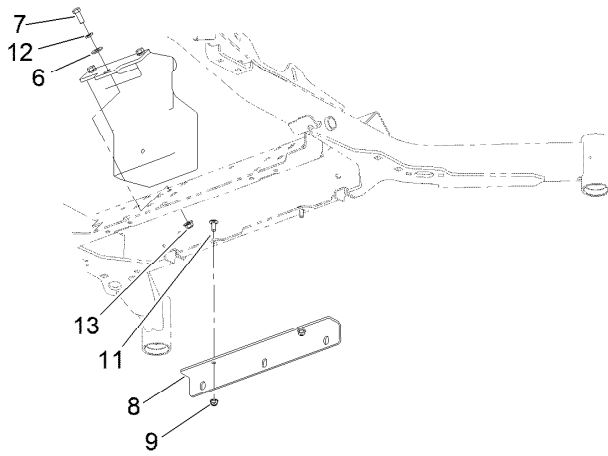
<i>Ref.</i>	<i>Part Number</i>	<i>Qty.</i>	<i>Description</i>	<i>Ref.</i>	<i>Part Number</i>	<i>Qty.</i>	<i>Description</i>
1	107-4088	1	Top-Bagger	6	1-653535	1	Reinforcement-Latch
2	1-653397-03	1	Stiffener-Bagger, Top	7	99-4693	1	Decal
3	114967	1	Screen-Bagger	8	114439	38	Rivet-Blind
4	1-653400-03	1	Support-Screen	9	3256-61	12	Washer-Flat
5	1-653519	1	Anchor-Latch				



## Bag and Tube Assembly

Ref.	Part Number	Qty.	Description	Ref.	Part Number	Qty.	Description
1	116-0754	2	Bag And Frame ASM	1:10	3296-42	2	Nut-Lock, NI
1:1	1-653529-03	1	Frame-Bag	2	109-2043	1	Lower Tube ASM
1:2	114973-03	1	Hanger-Bag	2:1	109-2038	1	Tube-Lower, Short
1:3	114974-03	1	Clamp	2:2	103-4081	2	Latch-Keeper ●
1:4	3230-1	2	Bolt-CARR	2:3	3290-500	2	Screw-PPH
1:5	3296-29	2	Nut-Lock, NI	2:4	3256-14	2	Washer-Flat
1:6	116-0757	1	Bag	4	109-2036	1	Tube-Upper
1:7	1-653566	1	Handle-Bag	5	3296-2	3	Nut-Lock, NI
1:8	3229-1	2	Screw-CARR	6	3256-61	3	Washer-Flat
1:9	1-653036	2	Washer	7	32105-13	3	Screw-HWH

● Kit No. 103-4188 - Contains catch, rubber latch, and mounting hardware



## Weight Assembly

Ref.	Part Number	Qty.	Description	Ref.	Part Number	Qty.	Description
6	3256-4	6	Washer-Flat	10:3	323-4	2	Screw-HH
7	323-6	6	Screw-HH	10:4	3253-5	2	Washer-Lock
8	115-3615-01	1	Bracket-Mount, Weight	11	3230-23	2	Bolt-CARR
9	104-8300	2	Nut-HF, NI	12	3253-5	6	Washer-Lock
10	147-2356	3	Weight ASM	13	104-8301	3	Nut-HF, NI
10:1	147-2357	1	Weight W/Decal ASM	14	104-2442	2	Bumper-Rubber
10:1:2	136-4053	1	Decal-Warning, Counterweight	15	104-7658	2	Spacer
10:2	115-3616-01	1	Tab-Support, Weight	16	3296-47	2	Nut-Lock,NI

**Notes:**

**Notes:**



**Count on it.**