

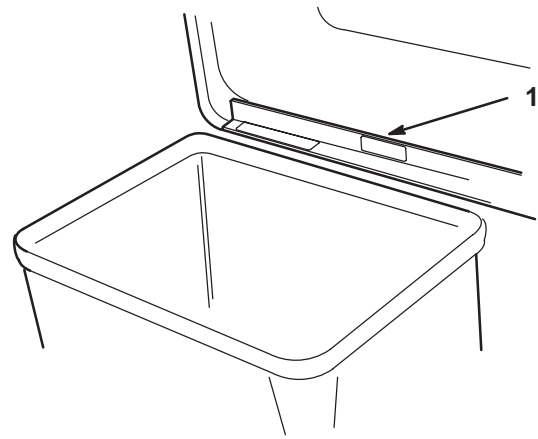


**44" Vac Bagger**  
**TimeCutter™ Z Riding Mower Attachment**  
Model No. 79160—Serial No. 21000001 and Up

**Operator's Manual**

# Contents

	Page
Introduction .....	2
Safety .....	3
Safety and Instruction Decals .....	3
Installation .....	4
Loose Parts .....	4
Preparing the Mower .....	6
Installing the Blower .....	8
Assembling the Bagger .....	9
Preparing the Tractor .....	10
Installing the Vac-Bagger onto the Tractor .....	11
Removing the Bagger .....	12
Operation .....	16
Using the Full Bag Tester .....	16
Emptying the Grass Bags .....	17
Clearing Obstructions from the Bagger .....	17
Operating and Bagging Tips .....	17
Maintenance .....	18
Inspecting the Bagger Attachment .....	18
Inspecting the Mower Blades .....	18
Caring for the Grass Bags .....	19
Cleaning the Bagger Attachment .....	19
Storing the Bagger Attachment .....	19



1375

**Figure 1**

1. Location of the model and serial numbers

Write the product model and serial numbers in the space below:

<p><b>Model No.</b> _____</p> <p><b>Serial No.</b> _____</p>
--

This manual identifies potential hazards and has special safety messages that help you and others avoid personal injury and even death. **Danger**, **Warning**, and **Caution** are signal words used to identify the level of hazard. However, regardless of the hazard, be extremely careful.

**Danger** signals an extreme hazard that *will* cause serious injury or death if you do not follow the recommended precautions.

**Warning** signals a hazard that *may* cause serious injury or death if you do not follow the recommended precautions.

**Caution** signals a hazard that may cause minor or moderate injury if you do not follow the recommended precautions.

This manual uses two other words to highlight information.

**Important** calls attention to special mechanical information and **Note:** emphasizes general information worthy of special attention.

## Introduction

Read this manual carefully to learn how to operate and maintain your product properly. The information in this manual can help you and others avoid injury and product damage. Although Toro designs and produces safe products, you are responsible for operating the product properly and safely.

Whenever you need service, genuine Toro parts, or additional information, contact an Authorized Service Dealer or Toro Customer Service and have the model and serial numbers of your product ready. Figure 1 illustrates the location of the model and serial numbers on the product.

# Safety

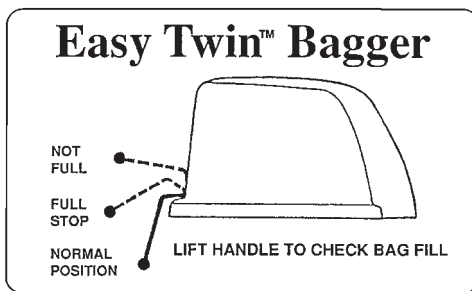
## Safety and Instruction Decals



Safety decals and instructions are easily visible to the operator and are located near any area of potential danger. Replace any decal that is damaged or lost.



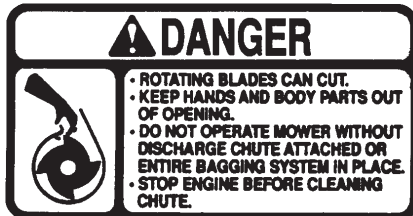
92-7113



116347



Molded into the belt cover



Molded into the belt cover and blower housing



Molded into the belt cover

# Installation

**Note:** Determine the left and right sides of the machine from the normal operating position.

## Loose Parts

**Note:** Use the chart below to identify parts used for assembly.

Description	Qty.	Use
Blade (hi-lift)	3	Replaces the standard lift blades.
Front grass baffle Carriage bolt, 5/16 x 7/8 in. Carriage bolt, 5/16 x 1/2 in. Locknut, 5/16 in. Locknut (thin), 5/16 in.	1 3 1 3 1	Installing the front grass baffle
Rear grass baffle Grass ring Bolt, 1/4 x 3/4 in. Locknut, 1/4 in. Carriage bolt, 5/16 x 7/8 in. Carriage bolt, 5/16 x 2-1/2 in. Latch tube Locknut, 5/16 in.	1 1 2 2 3 1 1 4	Installing the rear grass baffle and grass ring
Pivot support Pivot bracket Spacer tube Carriage bolt, 5/16 x 4-1/2 in. Carriage bolt, 5/16 x 7/8 in. Washer, 5/16 in. Locknut, 5/16 in.	1 1 1 1 1 2 4	Installing the blower pivot support
Pulley Mower belt cover Screw, 1/4 x 1/2 in. Blower assembly Belt Blower belt cover Washer Knobs	1 1 1 1 1 1 4 2	Installing the blower
Leveling brackets	2	Mounting the mower to the tractor

<b>Description</b>	<b>Qty.</b>	<b>Use</b>
Cover	1	Assembling the bagger
Indicator rod	1	
Handle	1	
Nut, 1/4 in.	1	
Clips	2	
Screw, 1/4 x 3/4 in.	2	
Locknut, 1/4 in.	4	
Frame assembly	1	
Weight	1	Installing the weight on the tractor
Screw, 3/8 x 1-1/2 in.	4	
Gusset	2	Installing the bagger mount
Spacer	4	
Bolt, 5/16 x 2 in.	4	
Bolt, 1/4 x 1-3/4 in.	4	
Washer, 1/4 in.	12	
Locknut, 1/4 in.	8	
Quick-attach bracket	1	
Hairpin cotter	1	
Plate	2	
Bolt, 1/4 x 1 in.	4	
Discharge tube	1	Installing the bagger assembly
Grass bags	2	
Operator's manual	1	Read before operating the tractor.

## Preparing the Mower

Remove the mower from the tractor; refer to the tractor Operator's Manual for instructions.

### Removing the Recycling Baffles

If you are using a recycling mower deck, you must remove the recycling baffles to use the vac bagger.

1. Thoroughly clean the mower.
2. Remove the knobs and washers from the left and right side baffles (Fig. 2). Lift the baffles from the deck. Retain all parts for future installation.

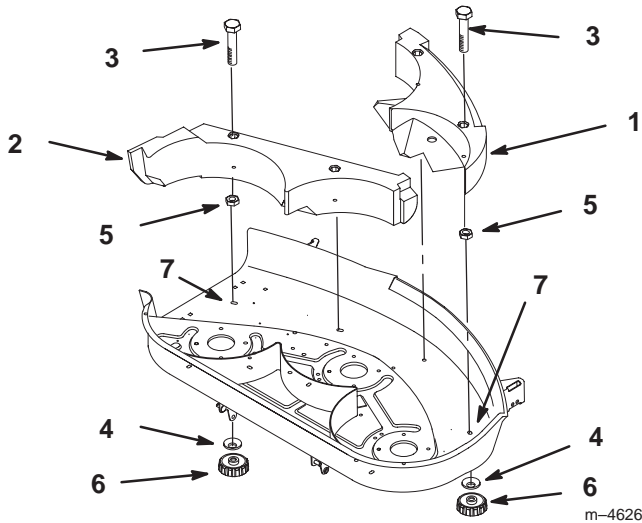


Figure 2

- |   |                      |
|---|----------------------|
| 1. Baffle left side                                   | 5. Locknut, 5/16 in. |
| 2. Baffle right side                                  | 6. Knob              |
| 3. Bolt, 5/16 x 1-1/4 in.                             | 7. Slotted hole      |
| 4. Belleville washer—concave side toward deck surface |                      |

! **Caution** !

**Open holes in the mower expose you and others to thrown debris which could cause injury.**

**Install hardware in mounting holes when the baffle is removed.**

3. Install 2 carriage bolts (3/8 x 3/4 in.) (from the underside of the mower), 2 washers (1/2 in.), and 2 locknuts (3/8 in.) in the 2 open slotted holes of the mower shown in Figure 2.

**Note:** Loose hardware is furnished with the mower deck assembly.

### Installing the Hi-lift Blades

Install the hi-lift blades from the bagger in place of the standard blades; refer to the Cutting Blade section of the tractor Operator's Manual.

**Note:** The hi-lift blades are also used for Recycling mowers.

### Remove the Discharge Chute

Remove the discharge chute and mounting brackets from the mower (Fig. 3). Retain all parts for future installation.

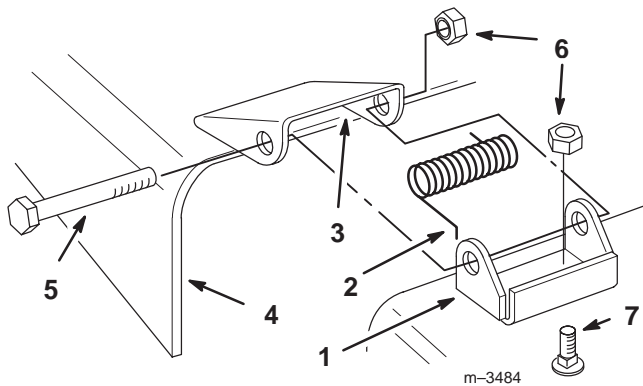
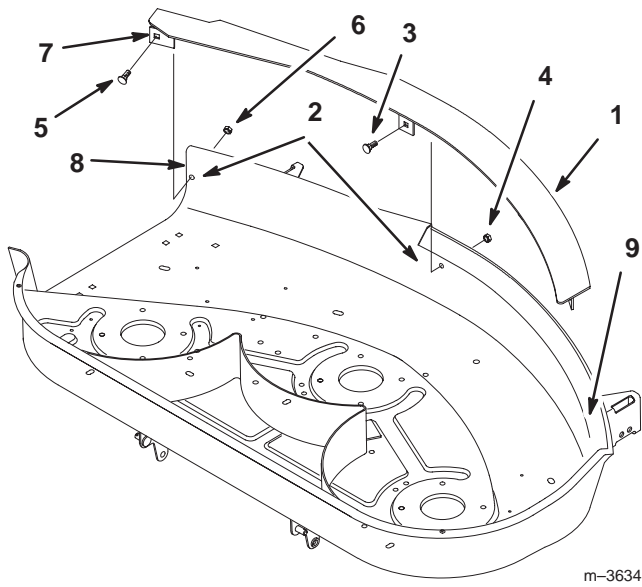


Figure 3

- |                     |                  |
|---------------------|------------------|
| 1. Bracket          | 5. Bolt          |
| 2. Spring hook end  | 6. Locknut       |
| 3. Space for spring | 7. Carriage bolt |
| 4. Discharge chute  |                  |

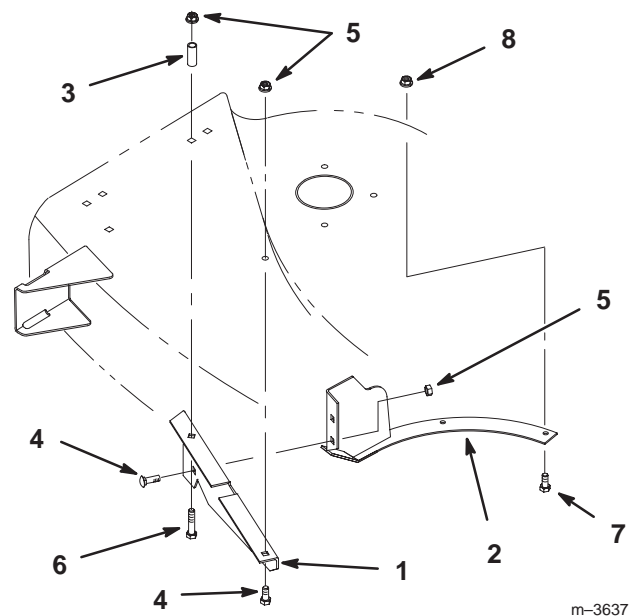
### Installing the Grass Baffles

1. If your mower housing already has holes to attach the front grass baffle, remove the carriage bolt plugging the left front edge of the mower housing (Fig. 4); then proceed to step 4.
2. Place the front grass baffle inside the front edge of the mower. The baffle plate should rest on the front edge of the mower. The right tab on the baffle should extend 1/8 in. outside of the right edge of the mower (Fig. 4). Use a clamp to hold the baffle in place.
3. Mark where the holes in the baffle are and remove the clamp and grass baffle. Drill 4 holes (11/32 in.) (Fig. 4).
4. Install the grass baffle inside front edge of the mower using 3 carriage bolts (5/16 x 7/8 in.) and 3 locknuts (5/16 in.) along the front. At the right side use the carriage bolt (5/16 x 1/2 in.) and thin locknut (5/16 in.) (Fig. 4).



**Figure 4**

- |                                  |   |
|----------------------------------|---|
| 1. Front grass baffle            | 6. Thin locknut, 5/16 in.                                   |
| 2. Drill 11/32 in. hole          | 7. Right tab on baffle                                      |
| 3. Carriage bolt, 5/16 x 7/8 in. | 8. Right edge of mower                                      |
| 4. Locknut, 5/16 in.             | 9. Remove the carriage bolt plugging the hole in this area. |
| 5. Carriage bolt, 5/16 x 1/2 in. |   |



**Figure 5**

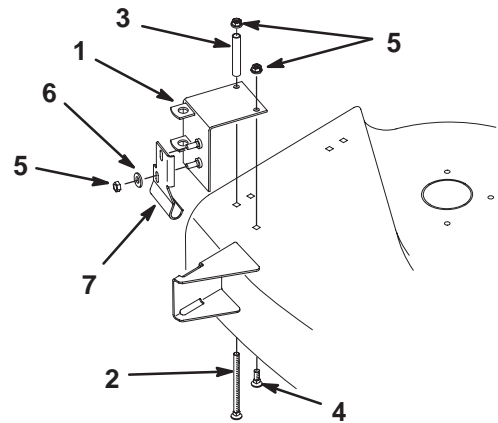
- |                                  |                                    |
|----------------------------------|------------------------------------|
| 1. Rear grass baffle             | 5. Locknut, 5/16 in.               |
| 2. Grass ring                    | 6. Carriage bolt, 5/16 x 2-1/2 in. |
| 3. Latch tube                    | 7. Screw, 1/4 x 3/4 in.            |
| 4. Carriage bolt, 5/16 x 7/8 in. | 8. Locknut, 1/4 in.                |

- Attach the rear grass baffle to the grass ring with 2 carriage bolts (5/16 x 7/8 in.) and 2 locknuts (5/16 in.) (Fig. 5).
- Install the rear grass baffle and grass ring inside the discharge chute area. Secure the rear grass baffle to the mower with a short carriage bolt (5/16 x 7/8 in.) and a long carriage bolt (5/16 x 2-1/2 in.). Add the latch tube above the deck and secure it with 2 locknuts (5/16 in.). Secure the grass ring to the mower with 2 bolts (1/4 x 3/4 in.) and 2 locknuts (1/4 in.) (Fig. 5).

- Rotate the blades to make sure that they do not hit the baffles or grass ring. Adjust the baffles as needed.

### Installing the Blower Pivot Support

- Locate the pivot support on the mower over the square holes near the discharge opening (Fig. 6).



**Figure 6**

- |                                    |                      |
|------------------------------------|----------------------|
| 1. Pivot support                   | 5. Locknut, 5/16 in. |
| 2. Carriage bolt, 5/16 x 4-1/2 in. | 6. Washer, 5/16 in.  |
| 3. Spacer tube                     | 7. Pivot bracket     |
| 4. Carriage bolt, 5/16 x 7/8 in.   |                      |

2. Push the vertical side (front) of the pivot support against the front of the mower and clamp it snugly, making sure the top of the pivot support lies flat on the top of the mower.
3. Secure the pivot support to the top of the mower with a bolt (5/16 x 4-1/2 in.), spacer tube, and bolt (5/16 x 7/8 in.) (from the underside of the mower) and locknuts (5/16 in.) (Fig. 6).
4. Secure the pivot bracket to the pivot support with 2 washers (5/16 in.) and 2 locknuts (5/16 in.) (Fig. 6).

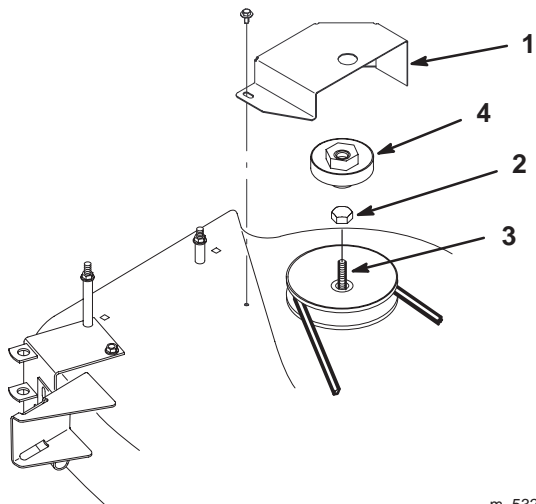
## Installing the Blower

### Installing the Blower Pulley

1. Remove the mower belt cover from the right side pulley (Fig. 7).

**Note:** Save all parts and hardware.

2. Remove the spindle pulley nut. Block the blade with a piece of wood or some other device to stop it from turning while you remove the pulley nut.
3. Thread the new blower pulley onto the spindle shaft in place of the pulley nut (Fig. 7). Torque the pulley to 50 to 75 ft.-lb. (68 to 102 N-m).



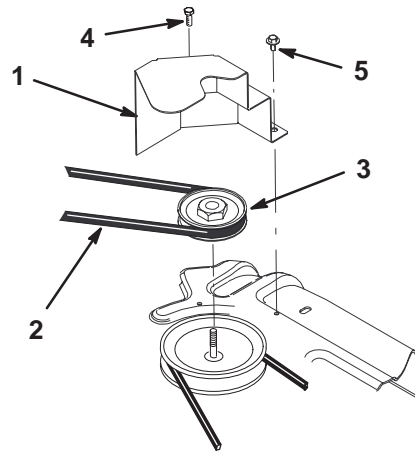
**Figure 7**

- |               |                  |
|---------------|------------------|
| 1. Belt cover | 3. Spindle shaft |
| 2. Nut        | 4. Blower pulley |

m-5325

### Installing the Blower Belt

1. Place the blower belt around the blower pulley (Fig. 8).
2. Install the belt cover using one of the existing screws and a new screw (1/4 x 1/2 in.) (Fig. 8).

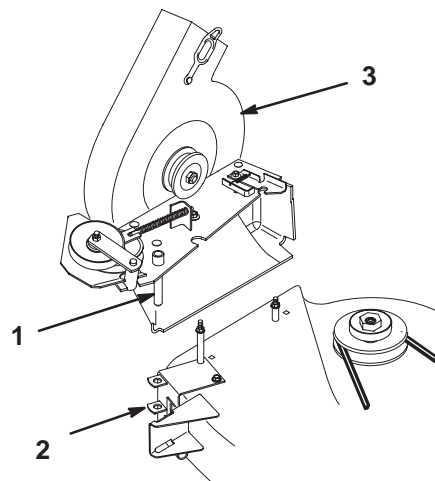


**Figure 8**

- |                  |                         |
|------------------|-------------------------|
| 1. Belt cover    | 4. Screw (existing)     |
| 2. Blower belt   | 5. Screw, 1/4 x 1/2 in. |
| 3. Blower pulley |                         |

m-5306

3. Install the mower onto the tractor; refer to the Tractor Operator's Manual for instructions.
4. Install the blower by lowering the pivot pin into the pivot support (Fig. 9).

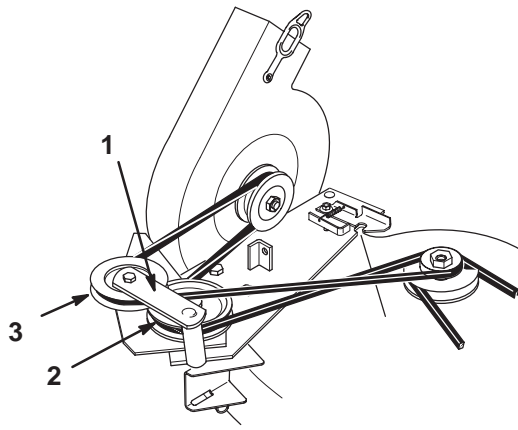


**Figure 9**

- |                  |                    |
|------------------|--------------------|
| 1. Pivot pin     | 3. Blower assembly |
| 2. Pivot support |                    |

m-3593

5. Open the latch and swing the blower out, away from the mower. Install the blower belt around the idler and blower pulleys as shown in Figure 10.



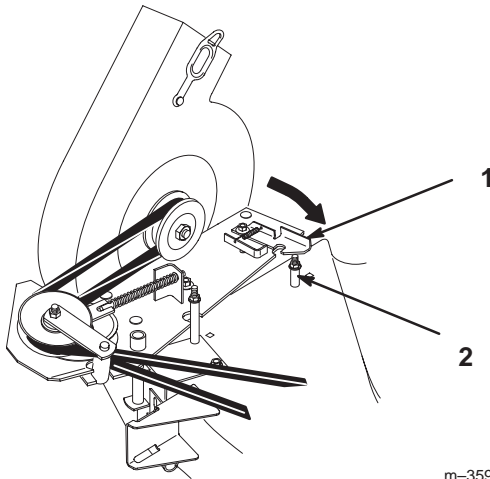
m-3557

**Figure 10**

1. Idler pulley bracket and pulley
2. Top side of belt against bottom pulley
3. V-side of belt into top pulley

6. With the belt installed, swing the blower toward the mower until the blower latch locks over the pin at the back of the mower (Fig. 11).

**Important** You may have to lift the blower slightly for the latch to close. Make certain that the latch operates smoothly and closes completely.

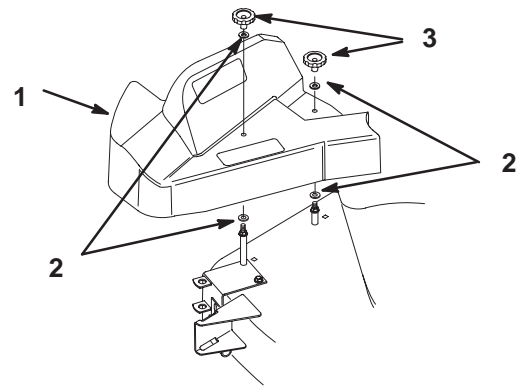


m-3594

**Figure 11**

1. Blower latch
2. Pin

7. Install the blower belt cover using 4 washers and 2 knobs (Fig. 12).



2003

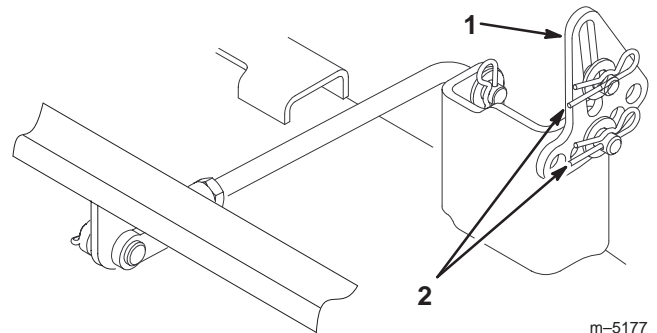
**Figure 12**

1. Mower belt cover
2. Washer
3. Knob

## Installing the Leveling Brackets

1. Replace the left side mower leveling bracket (slotted) with a new leveling bracket (hole) (Fig. 13). Secure it with the existing washers and hairpin cotters (Fig. 13).

**Note:** Save the slotted leveling bracket for future side discharge operation.



m-5177

**Figure 13**

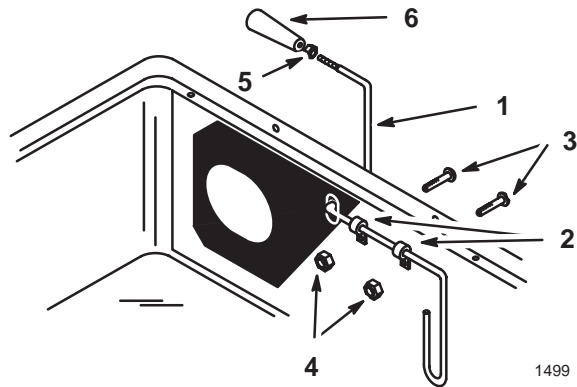
1. Slotted leveling bracket
2. Washer and hairpin cotter

2. Check the mower level front-to-rear and side-to-side; refer to Tractor Operator's Manual for instructions.

## Assembling the Bagger

1. Install the full-bag indicator rod through the hole in the rubber seal and the slot in the bagger cover (Fig. 14). Mount the full-bag indicator rod against the bagger cover using two clips, screws (1/4 x 3/4 in.), and locknuts (1/4 in.) (Fig. 14).

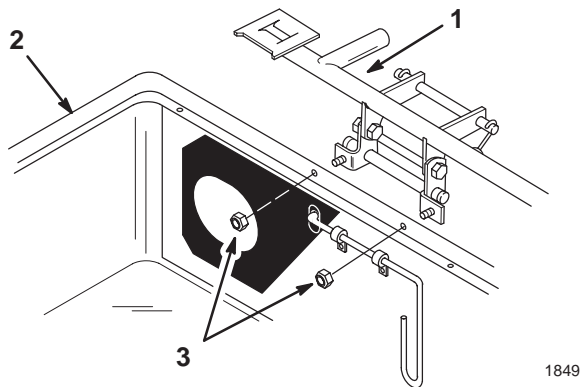
- Screw the nut completely onto the indicator rod (Fig. 14). Then screw the handle (Fig. 14) close to the nut so you can read the decal from the operator's position. Tighten the nut up against the handle to lock it in place.



**Figure 14**

- |                         |                     |
|-------------------------|---------------------|
| 1. Indicator rod        | 4. Locknut, 1/4 in. |
| 2. Clips                | 5. Nut              |
| 3. Screw, 1/4 x 3/4 in. | 6. Handle           |

- Attach the frame assembly to the bagger cover with 2 locknuts (1/4 in.) (Fig. 15).



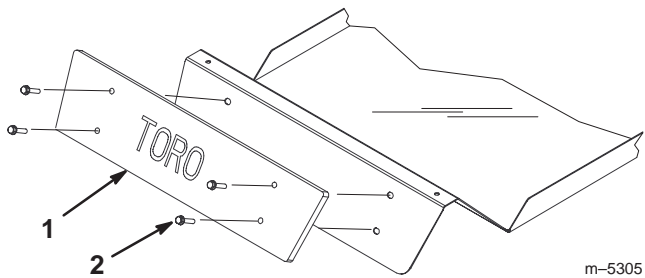
**Figure 15**

- |                   |                     |
|-------------------|---------------------|
| 1. Frame assembly | 3. Locknut, 1/4 in. |
| 2. Bagger cover   |                     |

## Preparing the Tractor

### Installing the Weight

Attach the weight to the front of the tractor with 4 screws (3/8 x 1-1/2 in.) (Fig. 16).

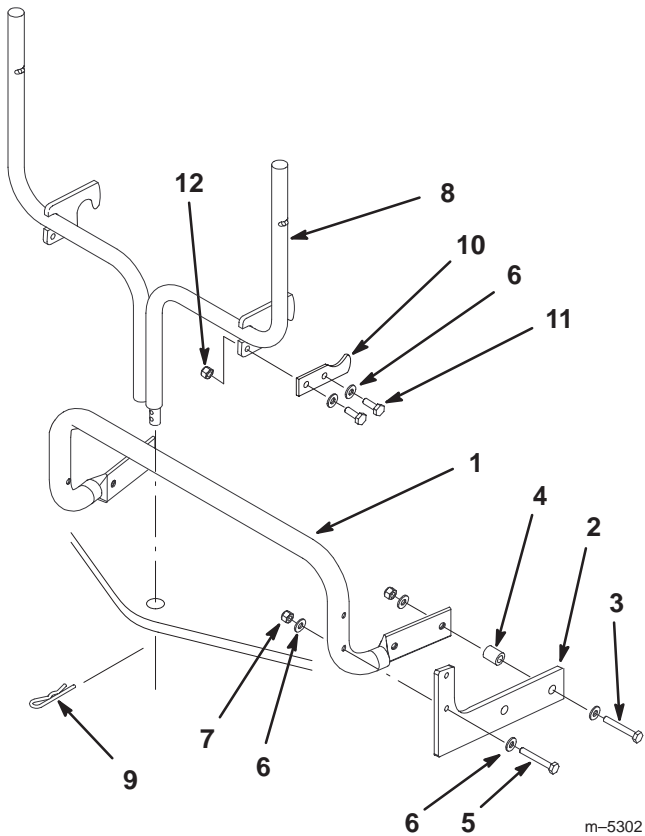


**Figure 16**

- |           |                           |
|-----------|---------------------------|
| 1. Weight | 2. Screw, 3/8 x 1-1/2 in. |
|-----------|---------------------------|

### Installing the Bagger Mount

- Remove the bolts, washers, and nuts holding the rear support rod to the tractor. Discard the bolts.
- Attach the support rod and gussets to the tractor with 4 bolts (5/16 x 2 in.) and 4 spacers and the washers and locknuts removed in step 1 (Fig. 17).



**Figure 17**

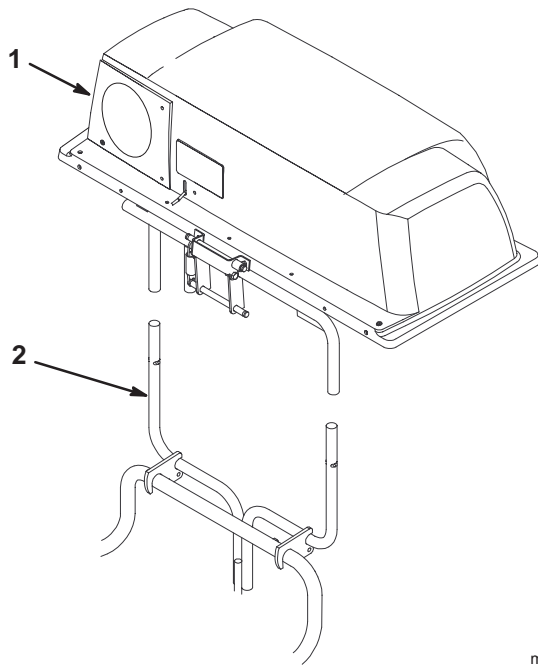
- |                          |                         |
|--------------------------|-------------------------|
| 1. Support rod           | 7. Locknut, 1/4 in.     |
| 2. Gusset                | 8. Quick-attach bracket |
| 3. Bolt, 5/16 x 2 in.    | 9. Hairpin cotter       |
| 4. Spacer                | 10. Plate               |
| 5. Bolt, 1/4 x 1-3/4 in. | 11. Bolt, 1/4 x 1 in.   |
| 6. Washer, 1/4 in.       | 12. Locknut, 1/4 in.    |

- Secure the upper half of the gusset to the rear support rod with 4 bolts (1/4 x 1-3/4 in.), 8 washers (1/4 in.), and 4 locknuts (1/4 in.) (Fig. 17).
- Slide the bottom of the quick-attach bracket down into the hole in the hitch and hook the notches over the rear support rod (Fig. 17).
- Slide the hairpin cotter through the hole at the bottom of the quick-attach bracket (Fig. 17).
- Attach the plates to the quick-attach bracket using 4 bolts (1/4 x 1 in.), 4 washers (1/4 in.), and 4 locknuts (1/4 in.) (Fig. 17).

## Installing the Vac-Bagger onto the Tractor

### Installing the Bagger Assembly

- Carefully lift the bagger top and slide it onto the quick-attach bracket (Fig. 18). The bagger top is easier to install if two people work together.



**Figure 18**

- Bagger top
- Quick-attach bracket

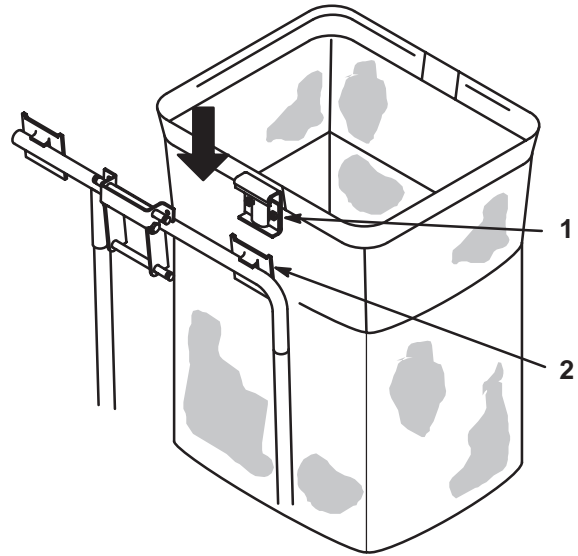
m-5303

⚠
Caution
⚠

**If you remove the spring-loaded bagger top when it is closed (in the down position), the top may suddenly fly open and you or someone else may be bruised, pinched, or injured in another way.**

**Always open (raise) the bagger top before you remove or install it on the quick-attach bracket.**

- Install the bags by sliding the bag frame hooks onto the retaining brackets (Fig. 19).

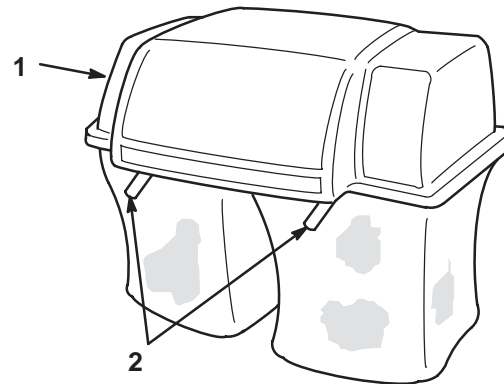


1373

**Figure 19**

- Bag frame hook
- Retaining bracket

- Lower the bagger top onto the bags. Then push down on both bag retainer handles until they lock on the bag frame (Fig. 20).



1376

**Figure 20**

- Bagger top
- Bag retainer handles

- Move the tractor seat to its normal position.

## Mounting the Discharge Tube

1. Insert the upper end of the discharge tube into the bagger top. Slide the lower end of the discharge tube over the blower discharge opening (Fig. 21).
2. Hook the rubber latch onto the knob (Fig. 21).

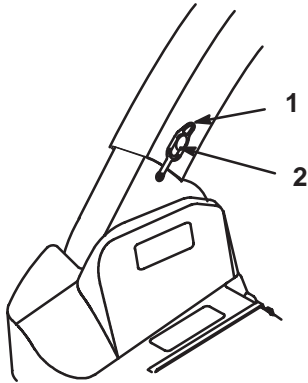


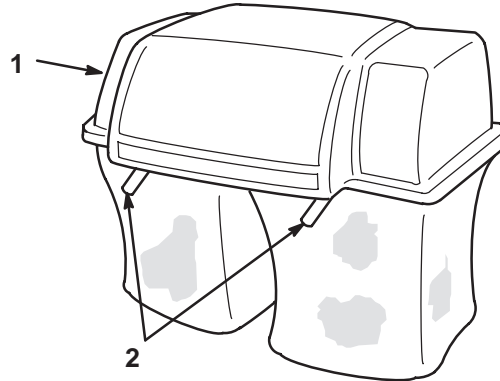
Figure 21

1. Rubber latch
2. Knob

1847

## Removing the Bagger

1. Raise the bagger top and remove the grass bags from the bag frame (Fig. 23).



1376

Figure 23

1. Bagger top
2. Bag retainer handles

## Removing the Bagger

### Removing the Discharge Tube

1. Unhook the rubber latch onto the knob (Fig. 22).
2. Slide the lower end of the discharge tube off of the blower discharge opening (Fig. 22). Pull the upper end of the discharge tube out of the bagger top.

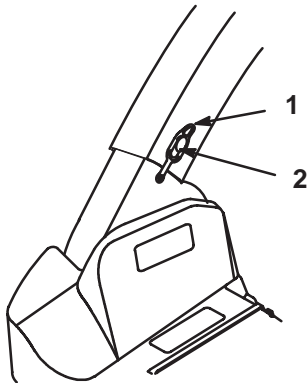
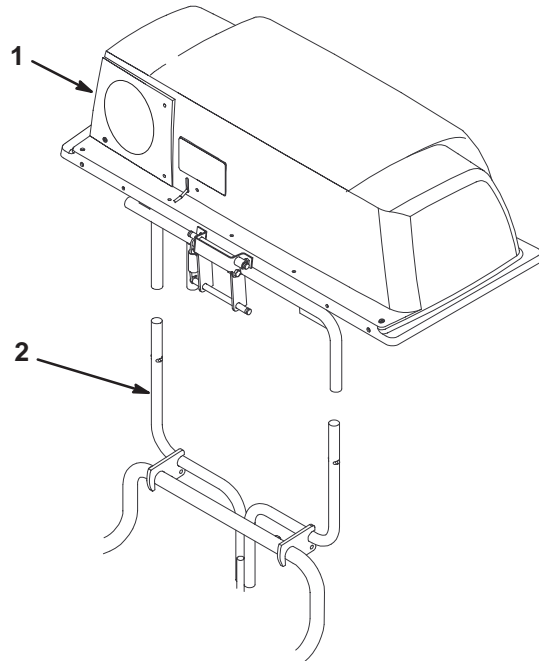


Figure 22

1. Rubber latch
2. Knob

1847



m-5303

Figure 24

1. Bagger top
2. Quick-attach bracket



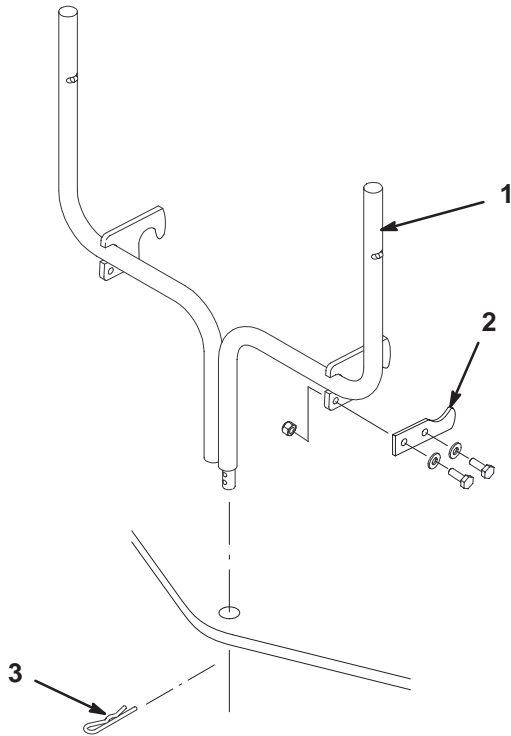
## Caution



If you remove the spring-loaded bagger top when it is closed (in the down position), the top may suddenly fly open and you or someone else may be bruised, pinched, or injured in another way.

Always open (raise) the bagger top before you remove or install it on the quick-attach bracket.

3. Remove the plates and fasteners from the quick-attach bracket (Fig. 25).
4. Remove the hairpin cotter from the hole at the bottom of the quick-attach bracket (Fig. 25).
5. Slide the bottom of the quick-attach bracket up out of the hole in the hitch (Fig. 25).



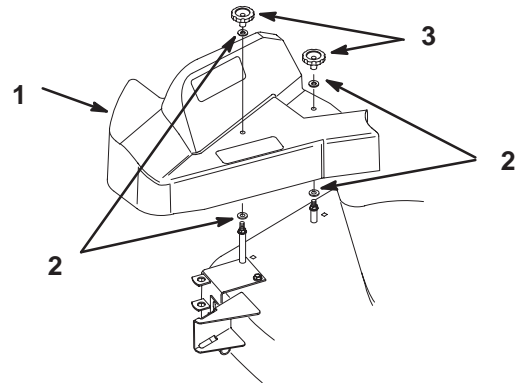
**Figure 25**

1. Quick-attach bracket
2. Plate
3. Hairpin cotter

m-5327

## Removing the Blower

1. Remove the blower belt cover by removing the 2 knobs and 4 washers (Fig. 26). Retain all parts for future installation.

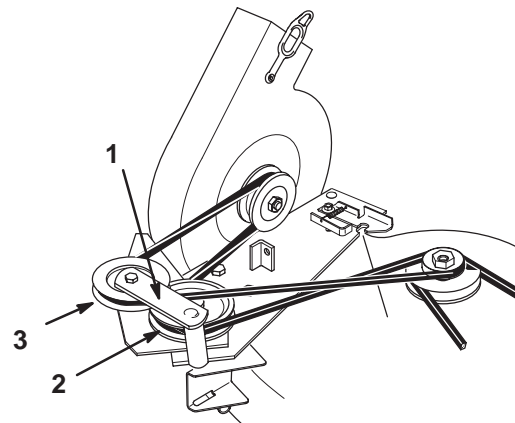


2003

**Figure 26**

1. Blower belt cover
2. Washer
3. Knob

2. Open the latch and swing the blower out, away from the mower. Remove the blower belt from the idler and blower pulleys (Fig. 27).

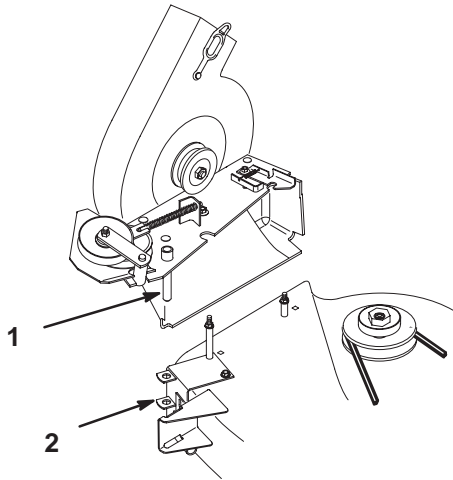


m-3557

**Figure 27**

1. Idler pulley bracket and pulley
2. Top side of belt against bottom pulley
3. V-side of belt into top pulley

- Remove the blower by lifting the pivot pin out of the pivot support (Fig. 28).



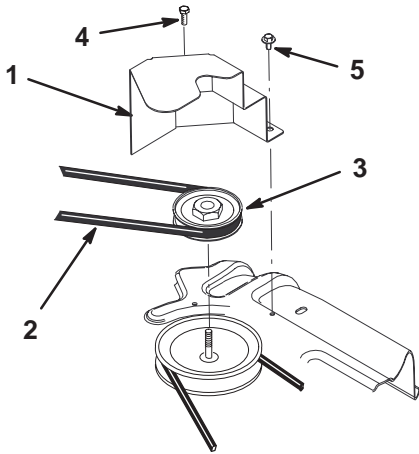
**Figure 28**

- Pivot pin
- Pivot support

m-3593

### Removing the Blower Belt

- Remove the mower belt cover from the right side pulley (Fig. 29). Save the mounting hardware.
- Unhook the blower belt from the blower pulley (Fig. 29).

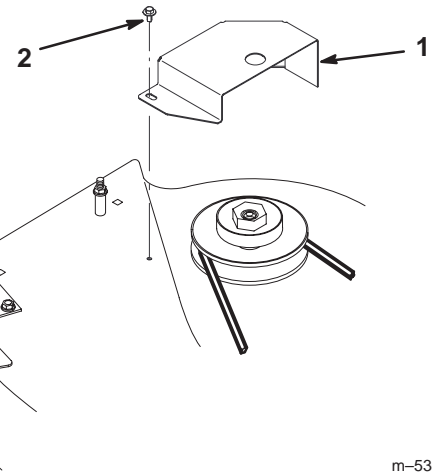


**Figure 29**

- Belt cover
- Blower belt
- Blower pulley
- Screw (existing)
- Screw, 1/4 x 1/2 in.

m-5306

- Install the old belt cover using the existing hardware (Fig. 30).



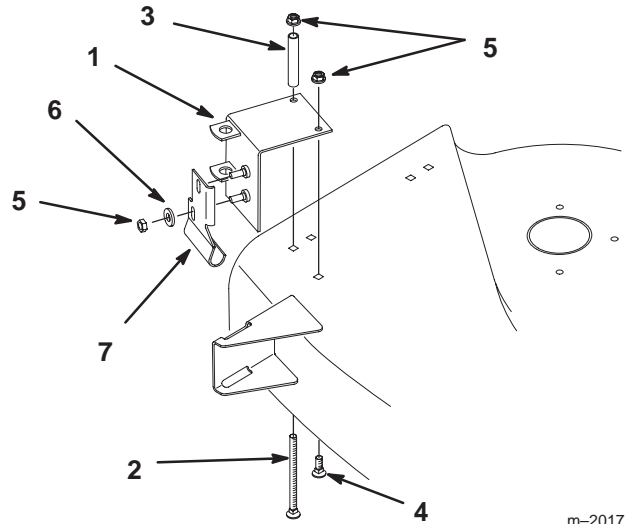
**Figure 30**

- Belt cover
- Screw (existing)

m-5304

### Removing the Blower Pivot Support

- Remove the mower from the tractor; refer to the tractor Operator's Manual for instructions.
- Remove the pivot support and pivot bracket from the mower (Fig. 31). Retain all parts for future installation.



**Figure 31**

- Pivot support
- Carriage bolt, 5/16 x 4-1/2 in.
- Spacer tube
- Carriage bolt, 5/16 x 7/8 in.
- Locknut, 5/16 in.
- Washer, 5/16 in.
- Pivot bracket

m-2017

## Installing the Standard-lift Blades

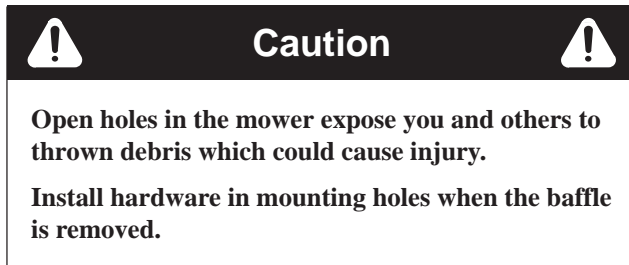
Install the standard-lift blades for side discharging in place of the hi-lift blades; refer to the Cutting Blade section of the tractor Operator's Manual.

**Note:** The hi-lift blades are used with the recycling baffles (see page 15).

## Removing the Grass Baffles

You must remove the grass baffles if you are using a recycling mower deck.

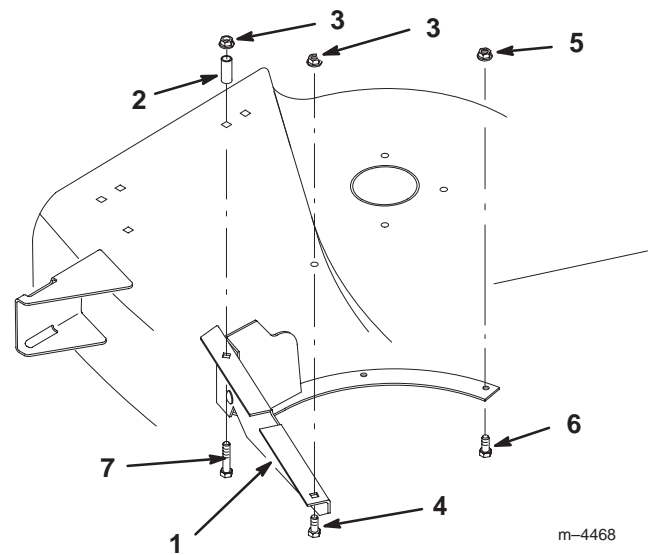
1. Remove the grass baffle inside the front lip of the mower (Fig. 32).



**Figure 32**

- |                                  |                                  |
|----------------------------------|----------------------------------|
| 1. Grass baffle                  | 4. Carriage bolt, 5/16 x 1/2 in. |
| 2. Carriage bolt, 5/16 x 7/8 in. | 5. Locknut (thin), 5/16 in.      |
| 3. Locknut, 5/16 in.             |                                  |

2. Remove the rear grass baffle and grass ring from the inside of the discharge chute area (Fig. 33). Retain all parts for future installation.



**Figure 33**

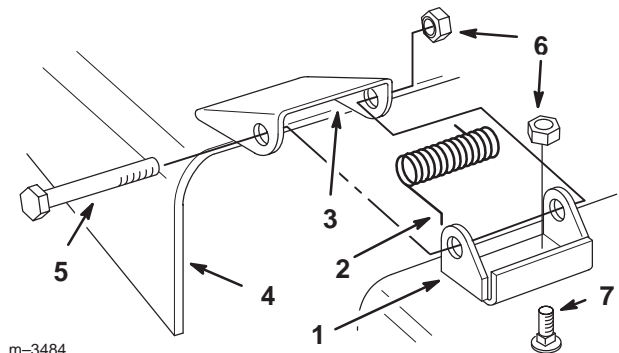
- |                                  |                                    |
|----------------------------------|------------------------------------|
| 1. Rear grass baffle and ring    | 5. Locknut, 1/4 in.                |
| 2. Latch tube                    | 6. Screw, 1/4 x 3/4 in.            |
| 3. Locknut, 5/16 in.             | 7. Carriage bolt, 5/16 x 2-1/2 in. |
| 4. Carriage bolt, 5/16 x 7/8 in. |                                    |

## Installing the Recycling Baffles

If you want to use the recycling mower deck, you must install the recycling baffles; refer to the Installation Instructions in your Recycling Kit.

## Installing the Discharge Chute

1. Install the mounting brackets onto the mower with carriage bolts (5/16 x 3/4 in.) and locknuts (5/16 in.) (Fig. 34).



**Figure 34**

- |                     |                  |
|---------------------|------------------|
| 1. Bracket          | 5. Bolt          |
| 2. Spring hook end  | 6. Lock nut      |
| 3. Space for spring | 7. Carriage bolt |
| 4. Discharge chute  |                  |

- Place the springs into the brackets on the mower with the hooked ends over the raised back (Fig. 34).
- Align the discharge chute with the holes in the brackets and the spring straight ends in the space under the hinge and above the chute (Fig. 34).
- Secure the chute to the bracket with bolts through the discharge chute, springs, and brackets. Secure with locknuts (Fig. 34).
- Lift the discharge chute and check that it is spring loaded and pivots freely to the full down position.

**Important** The discharge chute must be spring loaded in the down position. Lift the deflector up to test that it snaps to the full down position.



### Warning



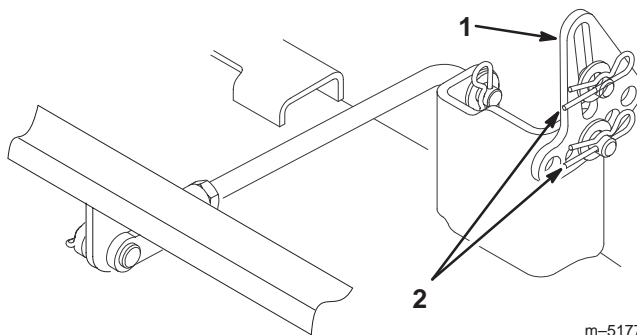
Without the grass deflector, discharge cover, or complete grass catcher assembly mounted in place, you and others are exposed to blade contact and thrown debris. Contact with the rotating mower blade(s) and thrown debris will cause injury or death.

- Never remove the grass deflector from the mower because the grass deflector routes material down toward the turf. If the grass deflector is ever damaged, replace it immediately.
- Never put your hands or feet under the mower.
- Never try to clear the discharge area or mower blades unless you move the power take off (PTO) to Off and rotate the ignition key to Off. Also remove the key and pull the wire off of the spark plug(s).

## Mounting the Mower onto the Tractor

- Install the mower onto the tractor; refer to Tractor Operator's Manual for instructions.
- Replace the left side mower leveling bracket (hole) with a slotted leveling bracket (Fig. 35). Secure it with the existing washers and hairpin cotters (Fig. 35).

**Note:** Save the (hole) leveling bracket for use when the blower is installed.



m-5177

**Figure 35**

- Leveling bracket
- Washer and hairpin cotter

- Check the mower level front-to-rear and side-to-side; refer to tractor Operator's Manual for instructions.

## Operation

**Note:** Determine the left and right sides of the machine from the normal operating position.



### Warning



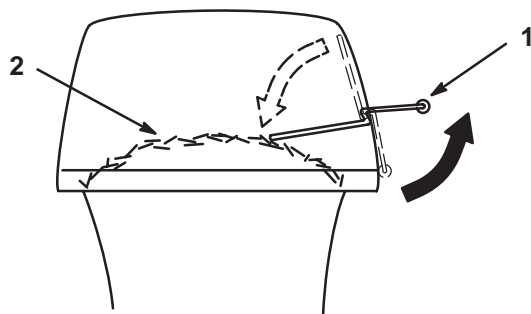
To avoid personal injury, follow these procedures:

- Become familiar with all operating and safety instructions in the operator's manual for your tractor and mower before using this attachment.
- Never remove the discharge tube, bags, bagger top, or the blower while the engine is running.
- Always shut the engine off and wait for all moving parts to stop before clearing an obstruction from the vac bagging system.
- Never do maintenance or repairs while the engine is running.

## Using the Full Bag Tester

As grass is cut and blown into the bags, the left bag fills first, then the right bag. If you overfill the bags, grass will eventually plug the discharge tube or elbow.

- Stop the tractor and apply the brake.
- To check if both bags are full, periodically raise the full bag tester handle (Fig. 36). If you feel resistance as you raise the handle, the bags must be emptied because they are full (Fig. 36).



1381

**Figure 36**

1. Full bag tester handle      2. Bag full

## Emptying the Grass Bags

Be careful when lifting or handling a grass bag that is full. To empty the grass bags:

1. Stop the tractor, set the parking brake, and disengage the power take off (PTO). Stop the engine and remove the ignition key.
2. Pull up on both bag retainer handles until they unlock from the bag frame (Fig. 20). Open (raise) the bagger top.
3. Compress debris into the bags. With both hands, lift up on the bag and unhook it from the retaining bracket (Fig. 19). Empty the bag. Repeat the procedure for the other bag.
4. Install the bags by sliding the bag frame hooks onto the retaining brackets (Fig. 19).
5. Lower the bagger top onto the bags. Then push down on both bag retainer handles until they lock on the bag frame (Fig. 20).

## Clearing Obstructions from the Bagger

1. Stop the tractor, shift into neutral, set the parking brake, disengage the PTO, stop the engine, and remove the ignition key. Wait for all moving parts to stop.
2. Check the grass bags and empty them if they are full.

3. Remove and separate the discharge tube and blower from the bagger top and mower. Using a stick or similar object, carefully remove and clear the obstruction from the mower, discharge tube, blower, and the bagger top.
4. After you remove the obstruction, install the complete bagger system and resume operation.

## Operating and Bagging Tips

### Size

Remember that the tractor is longer and wider with this attachment installed. By turning too sharply in confined places you may damage the attachment.

### Trimming

Always trim with the left side of the mower. Do not trim with the right side of the mower because you could damage the bagger's blower and discharge tube.

### Cutting Height

Do not set the mower cutting height too low because long grass surrounding the mower can prevent air from getting under the mower and entering the bagging system. If enough air doesn't get under the mower, the bagging system will plug.

### Cutting Frequency

Cut the grass often, especially when it grows rapidly. You will have to cut your grass twice if it gets excessively long (refer to Bagging Long Grass, page 18).

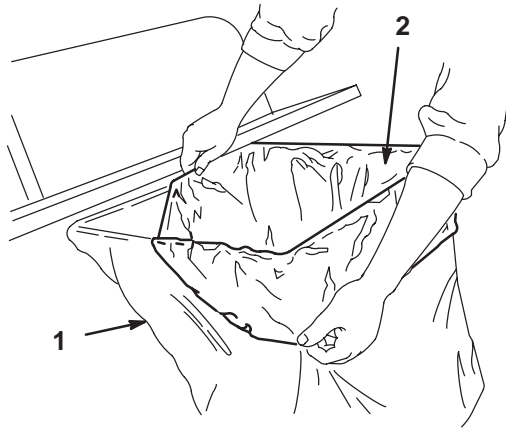
### Cutting Technique

For best lawn appearance, be sure to slightly overlap the mower into the previously cut area. This helps reduce the load on the engine and reduces the chance of plugging the blower and discharge tube.

### Using Bag Liners

Although not required, bags may be inserted into each cloth grass bag as a liner to collect clippings and make disposal more convenient (Fig. 37). If you use a bag liner, remove the filled grass bag and close the top of the liner. Then pull

the liner out the grass bag or turn the bag upside down while holding the handle on the bottom of the grass bag, allowing the liner to slide out.





1378

**Figure 37**

1. Cloth grass bag                      2. Bag (liner)

## Bagging Speed

Most often you will bag with the tractor throttle in the Fast position and drive at a normal ground speed. However, in extremely dry and dusty grass, you may want to slightly reduce the throttle speed and increase the ground speed of the tractor. The bagging system may plug if you drive too fast and the engine speed gets too slow. On hills it may be necessary to slow the tractor ground speed. This helps maintain the engine speed and bagging efficiency. Mow downhill whenever possible.

	<b>Warning</b>	
<p>As the grass bags fill, extra weight is added to the back of the tractor. If you stop and start suddenly on hills, you may lose steering control or the tractor may tip.</p> <ul style="list-style-type: none"> <li>• Do not start or stop suddenly when going uphill or downhill. Avoid uphill starts.</li> <li>• If you do stop the tractor when going uphill, disengage the PTO. Then back down the hill slowly in Reverse.</li> <li>• Do not change speeds or stop on slopes.</li> </ul>		

## Bagging Long Grass

Excessively long grass is heavy and may not be propelled completely into the grass bags. If this happens, the discharge tube and blower may plug. To avoid plugging the bagging system, mow the grass at a high height of cut, then lower the mower to your normal cutting height and repeat the bagging process.

## Bagging Wet Grass

Always try to cut grass when it is dry because your lawn will have a neat appearance. If you must cut wet grass, use the conventional side discharge feature of the mower. Several hours later, when the clippings are dry, install the complete bagger attachment and vacuum up the grass clippings.

## Signs of Plugging

As you are bagging, a small amount of grass clippings normally blow out the front of the mower. An excessive amount of clippings blowing out indicates that the bags are full or the system is plugged.



# Maintenance

**Note:** Determine the left and right sides of the machine from the normal operating position.

## Inspecting the Bagger Attachment

Inspect the bagger attachment after the first 10 hours of operation, and monthly thereafter.

1. Check the blower, discharge tube, and the bagger top. Replace these parts if they are cracked or broken.
2. Tighten all nuts, bolts, and screws.
3. Inspect the grass bags for deterioration.

	<b>Warning</b>	
<p>You or bystanders could be severely injured by flying debris or thrown objects that may pass through torn, worn, or deteriorated grass bags.</p> <ul style="list-style-type: none"> <li>• Frequently check the grass bags for holes, rips, wear, and other deterioration.</li> <li>• Do not wash the grass bags.</li> <li>• If the bag has deteriorated, install new grass bags supplied by the manufacturer of this bagger attachment.</li> </ul>		

## Inspecting the Mower Blades

1. Inspect the mower blades regularly and whenever a blade strikes a foreign object.
2. If the blades are badly worn or damaged, install new blades. Refer to your tractor or mower operator's manual for complete blade maintenance.

## Caring for the Grass Bags

Washing the grass bags is not recommended.

To prevent rapid deterioration of the bag material, store the bags where they will dry completely after each use.

## Cleaning the Bagger Attachment

1. After each use, remove and wash the inside and outside of the bagger top, discharge tube, blower, and the underside of the mower, using water sprayed from a garden hose. Use a mild automotive detergent to remove stubborn dirt.
2. Make sure you remove matted grass from all parts.
3. After washing, let all of the parts dry thoroughly. Do not wash the grass bags.

## Storing the Bagger Attachment

1. Clean the bagger attachment; refer to Cleaning the Bagger Attachment, page 19.
2. Inspect the bagger attachment for damage; refer to Inspecting the Bagger Attachment, page 18.
3. Make sure the grass bags are empty and thoroughly dry.
4. Store the bagger in a clean, dry place, out of direct sunlight. This protects the plastic parts and extends the life of the bagger. If you must store the bagger outside, cover it with a weatherproof cover.

