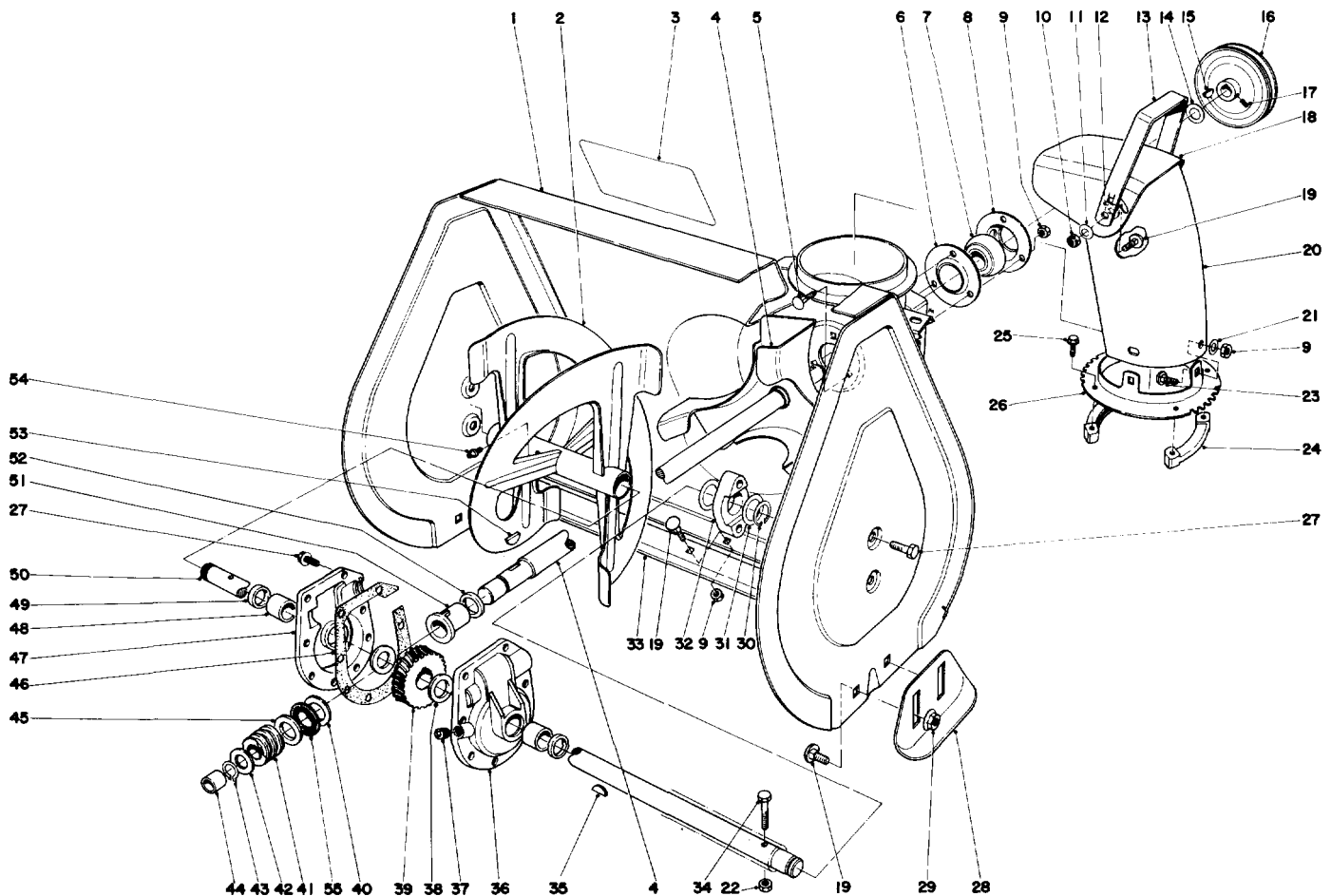


TORO®

MODEL NO. 38240-9000001 & UP

**PARTS
CATALOG****421 SNOWTHROWER INTERNATIONAL****AUGER ASSEMBLY**

Ref. No.	Part No.	Description	No. Used
1	37-6650	Auger Housing	1
2	37-6670	Auger L.H.	1
*	37-6660	Auger R.H.	1
3	29-6350	Decal — Auger Warning	1
4	37-6990	Shaft & Impeller	1
5	3230-10	Carriage Bolt	3
6	26-6110	Bearing Flange Front	1
7	26-6100	Ball Bearing	1
8	26-6120	Bearing Flange Rear	1
9	3296-29	Locknut	11
10	32152-1	Locknut	2
11	3290-340	Washer Belleville	2
12	20-4320	Washer Rubber	2
13	37-8930	Handle Deflector	1
14	3-0737	Washer	1

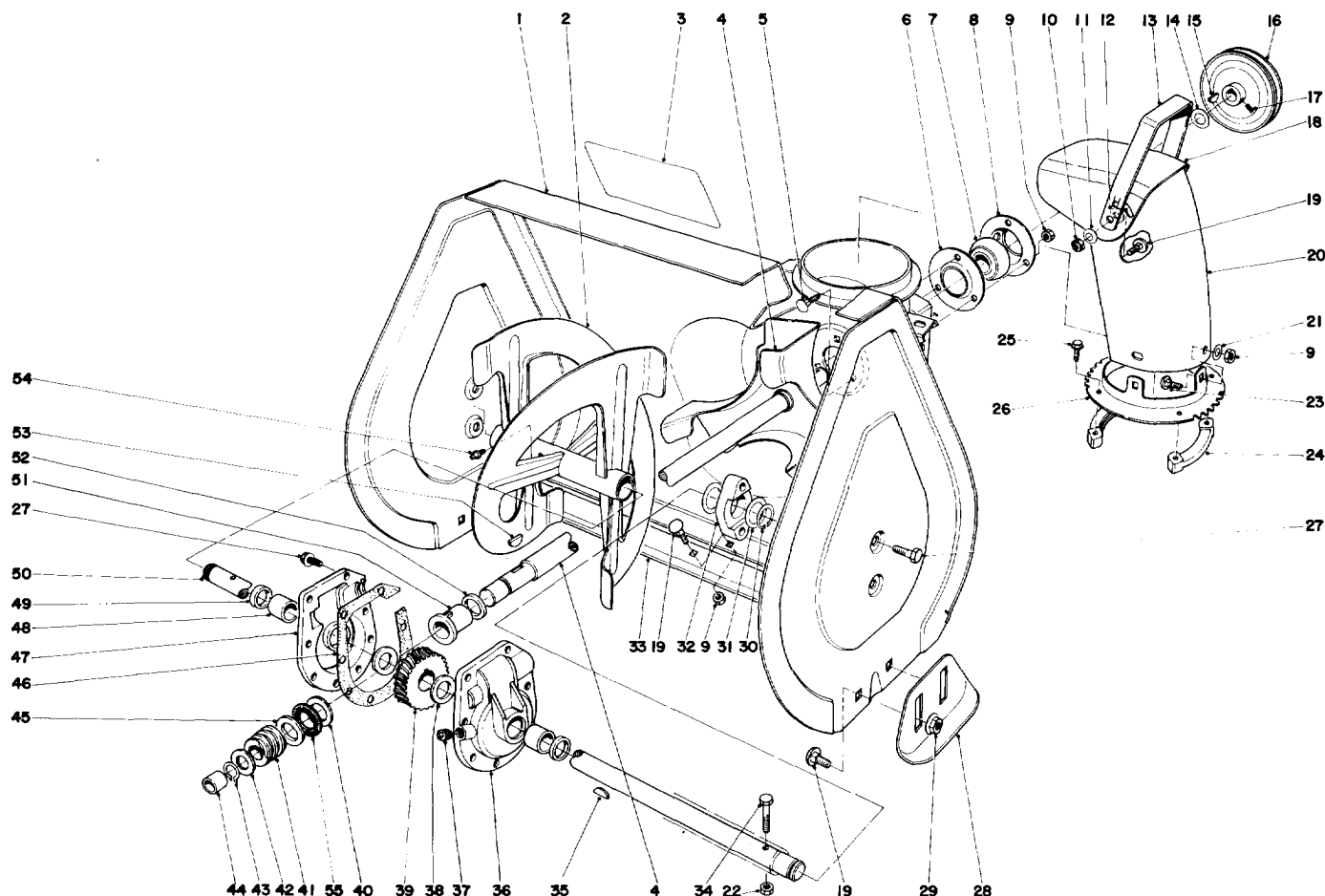
Ref. No.	Part No.	Description	No. Used
15	3257-5	Woodruff Key	1
16	37-6890	Pulley	1
17	3242-4	Set Screw	2
18	37-8920	Deflector	1
19	3230-1	Carriage Bolt	11
20	37-8910	Chute — Discharge	1
21	3256-23	Washer	3
22	32152-4	Locknut	2
23	3230-18	Carriage Bolt	3
24	37-6490	Retainer — Chute Ring	2
25	27-0220	Self Tapping Screw	4
26	37-8940	Chute Ring	1
27	32144-11	Self Tapping Screw	12
28	3-3866	Skid	2
29	32128-20	Flange Nut	4

*Not Illustrated

COPYRIGHT © ALL RIGHTS RESERVED

The Toro Company — 1978

MINNEAPOLIS, MN 55420 — U.S.A.

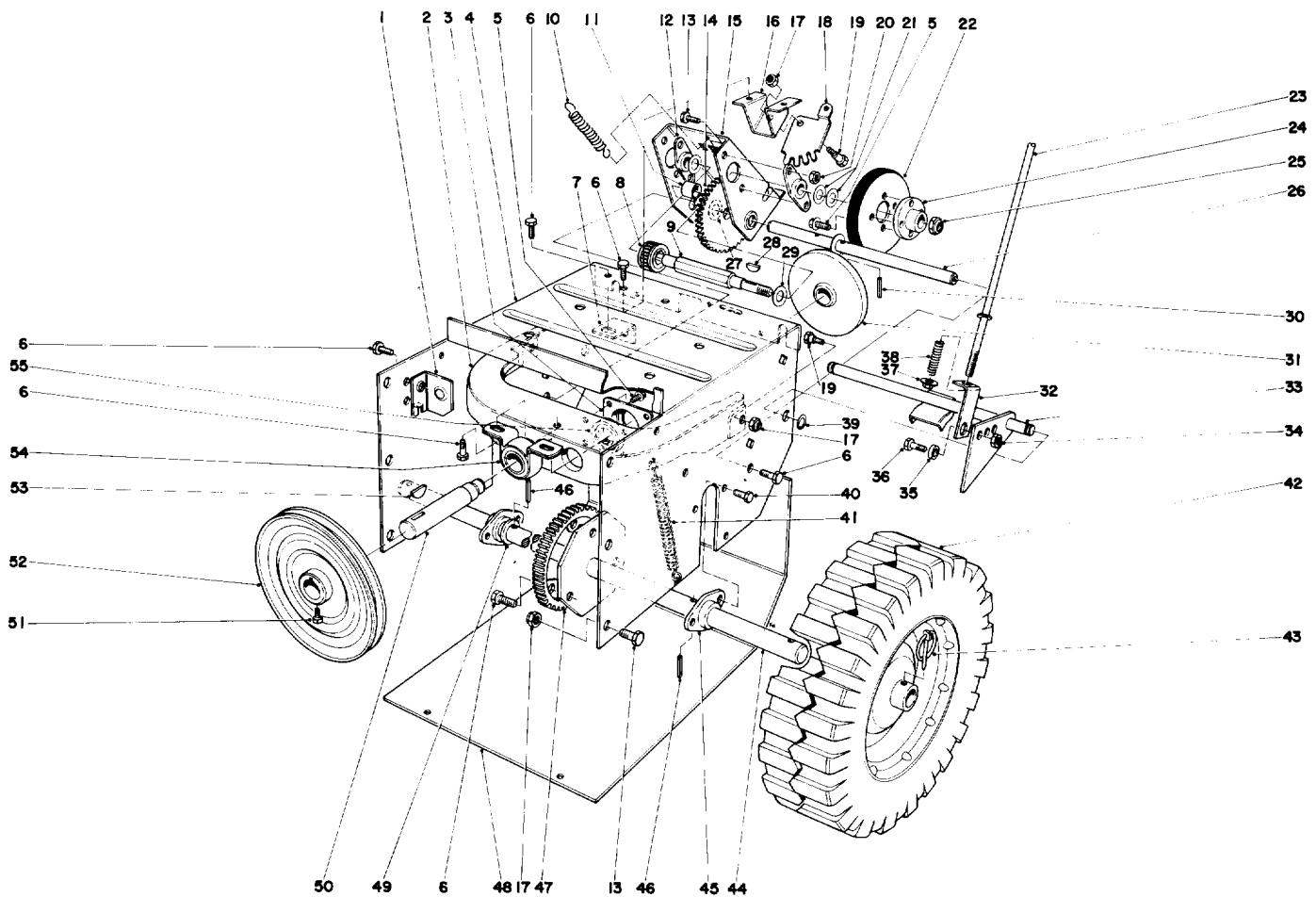


AUGER ASSEMBLY (Continued)

Ref. No.	Part No.	Description	No. Used
30	32151-36	Snap Ring	2
31	5-1550	Thrust Washer	4
32	37-6550	Auger Bearing	2
33	37-6710	Scraper Blade	1
34	321-10	Capscrew	2
35	3257-33	Woodruff Key	1
36	37-8850	Gear Case R.H. (Incl. Ref. #48 & #49)	1
37	281-1	Pipe Plug	1
38	252-71	Thrust Bearing	2
39	23-9050	Gear	1
40	257-3	Thrust Washer	1
41	5-7170	Worm	1
42	3-8664	Washer	1
43	32120-72	Retaining Ring	1

Ref. No.	Part No.	Description	No. Used
44	256-32	Bushing	1
45	252-80	Thrust Washer	1
46	19-8520	Gasket	1
47	37-8860	Gear Case L.H. (Incl. Ref. #48 & #49)	1
48	256-237	Bushing	2
49	7-0045	Oil Seal	2
50	37-6800	Shaft Auger	1
51	37-6560	Bushing — Input	1
52	237-87	Oil Seal	1
53	3257-23	Key	1
54	302-5	Grease Fitting	1
55	252-76	Needle Thrust Bearing	1
*	37-6960	Gear Case Assembly Complete	1

*Not Illustrated

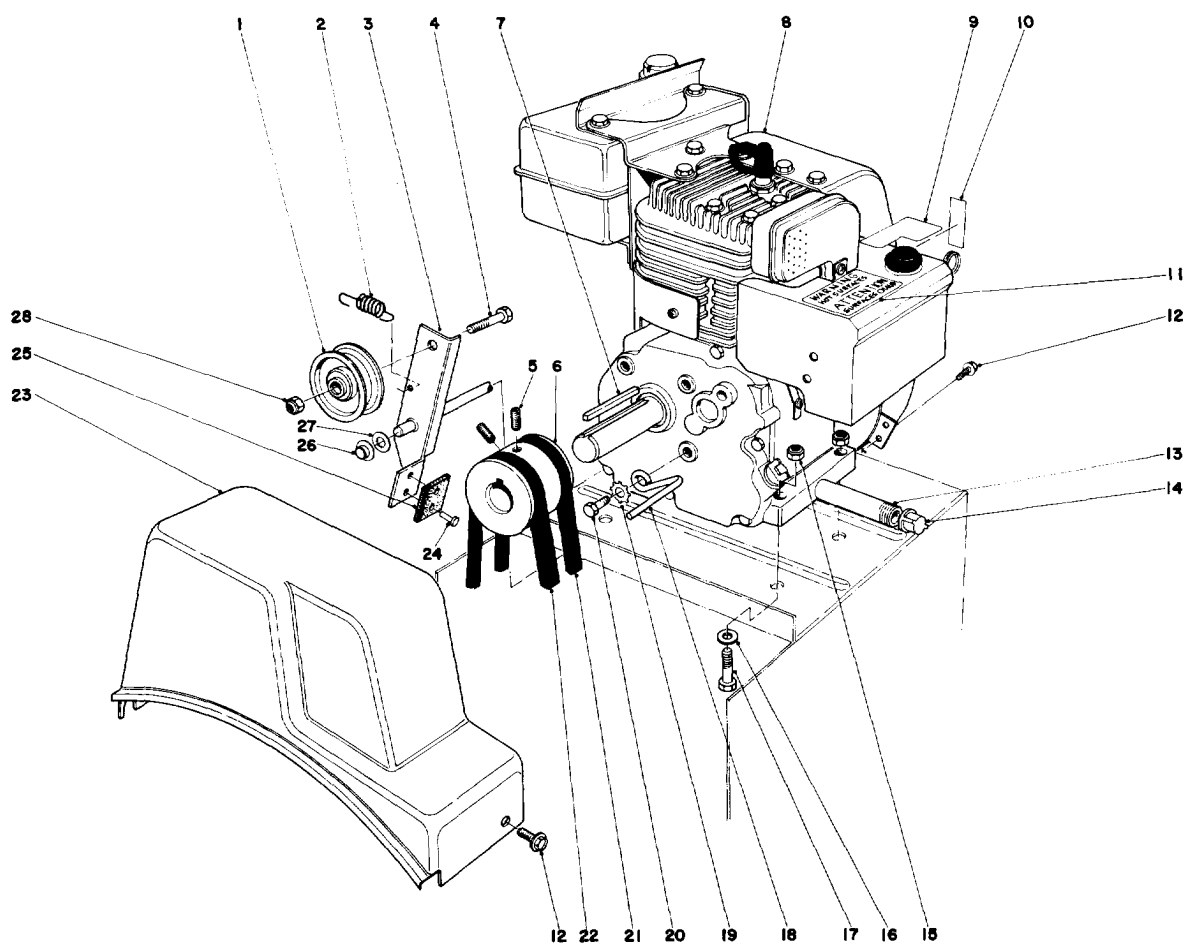


TRACTION ASSEMBLY

Ref. No.	Part No.	Description	No. Used
1	37-9060	Mounting – Clutch Rod Front	1
2	37-6740	Frame – Friction Plate	1
3	37-6730	Cap – Bearing	1
4	37-8900	Traction Frame	1
5	12-3270	Self Tapping Screw	8
6	32144-11	Self Tapping Screw	11
7	37-9070	Mounting Clutch Rear	1
8	37-6500	Sliding Gear	1
9	37-6780	Hex Shaft	1
10	37-8880	Spring – Traction Disengage	1
11	256-86	Bushing	1
12	20-1620	Bearing Friction Wheel	2
13	322-2	Capscrew	10
14	37-9160	Intermediate Gear (Incl. Ref. #11)	1
15	37-6770	Bracket Sliding	1
16	37-8790	Mounting Quadrant Gear	1
17	3296-29	Locknut	9
18	37-8800	Quadrant Gear	1
19	37-8770	Shoulder Bolt	3
20	32152-1	Locknut	4
21	36-4790	Thrust Washer	2
22	37-6570	Friction Wheel	1
23	38-4500	Lower Traction Rod	1
24	37-6540	Hub – Friction Wheel Mounting	1
25	3296-48	Locknut	1
26	37-6760	Shaft – Pivot	1
27	10-9280	Thrust Washer	2
28	3257-37	Key Hi Pro	1

Ref. No.	Part No.	Description	No. Used
29	5-7570	Thrust Washer	2
30	32121-45	Roll Pin	2
31	38-0800	Friction Plate	1
32	38-4490	Bracket Traction	1
33	38-5350	Traction Engagement Arm	1
34	32152-4	Locknut	1
35	38-4510	Spacer – Traction Bracket	1
36	321-4	Capscrew	1
37	32128-10	Flange Locknut	1
38	38-4520	Spring Compression	1
39	32151-61	Snap Ring	1
40	11-9760	Self Tapping Screw	4
41	37-8870	Spring – Friction Plate Frame	1
42	38-1400	Wheel	2
43	3290-243	Klik Pin	2
44	37-6970	Axle Shaft	1
45	37-6850	Bearing Axle	1
46	32121-31	Roll Pin	2
47	37-6520	Gear Axle	1
48	37-6830	Bottom Cover	1
49	3-8664	Thrust Washer	2
50	37-6750	Shaft – Friction Plate	1
51	3242-4	Set Screw	2
52	38-5650	Pulley	1
53	3257-5	Key	1
54	38-4470	Bushing Assembly	1
55	251-277	Bearing	1
*	37-7010	Tire Chain Kit (Optional)	1

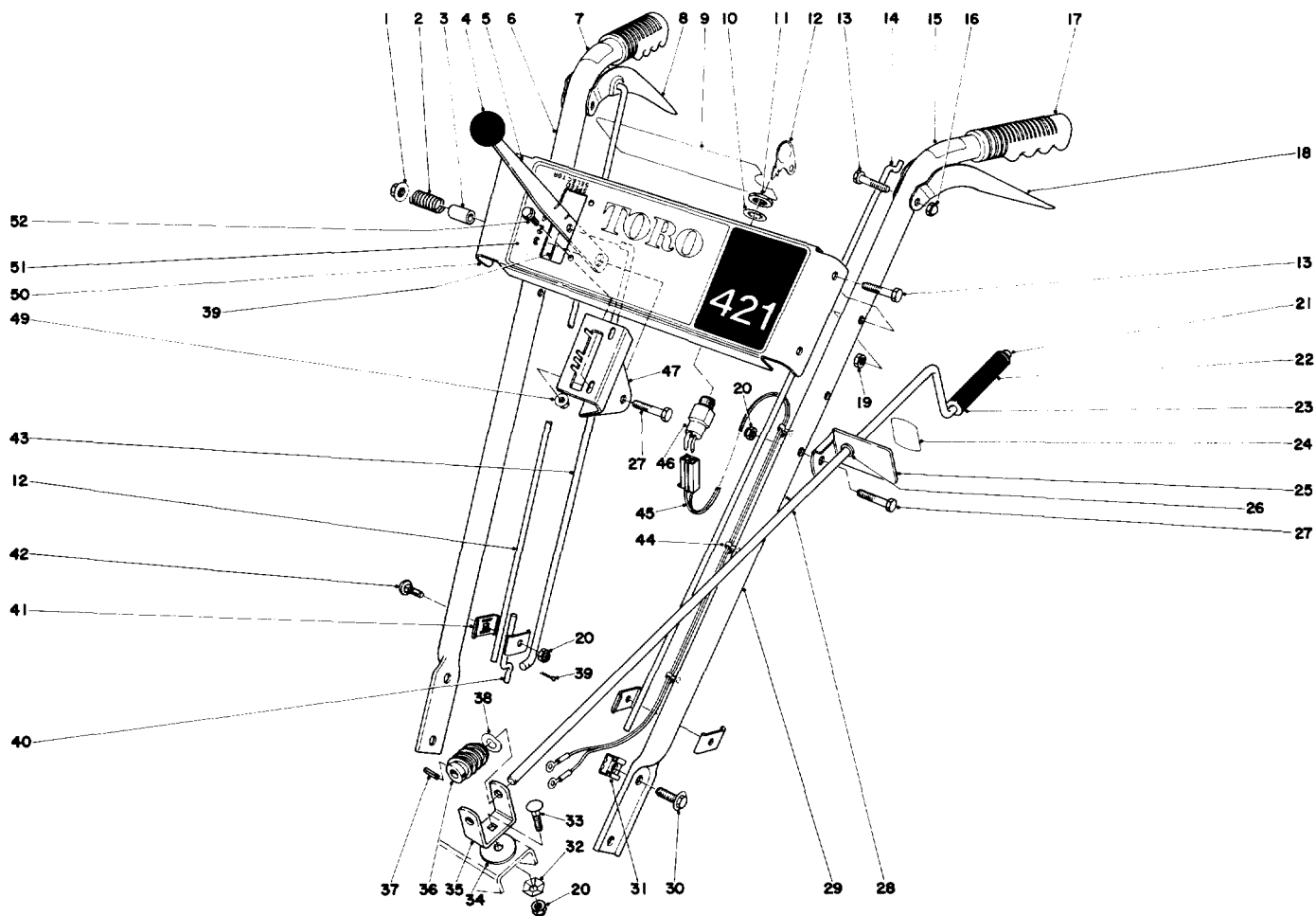
*Not Illustrated



ENGINE ASSEMBLY

Ref. No.	Part No.	Description	No. Used
1	3-4244	Idler Pulley	1
2	10-3890	Spring — Auger Disengage	1
3	37-9120	Auger Clutch (Incl. Ref. #24 & #25)	1
4	323-29	Capscrew	1
5	3246-14	Set Screw	2
6	37-6720	Engine Pulley	1
7	5-0930	Key	1
8	221-601	Engine	1
9	29-6410	Decal — Primes & Choke	1
10	37-8890	Decal Throttle	1
11	29-6390	Decal — Hot Surface Warning	1
12	12-3270	Self Tapping Screw	3
13	289-8	Pipe Nipple	1
14	288-2	Pipe Cap	1

Ref. No.	Part No.	Description	No. Used
15	3296-29	Locknut	4
16	3256-2	Washer	4
17	322-7	Capscrew	4
18	37-8990	Belt Retainer	1
19	3255-8	Lockwasher	1
20	3210-2	Capscrew	1
21	37-9090	V — Belt Traction	1
22	37-9080	V — Belt Auger	1
23	37-6900	Belt Cover	1
24	3295-23	Rivet	2
25	20-3100	Brake Pad	1
26	3290-320	Push-On	1
27	3256-24	Washer	1
28	3296-39	Locknut	1

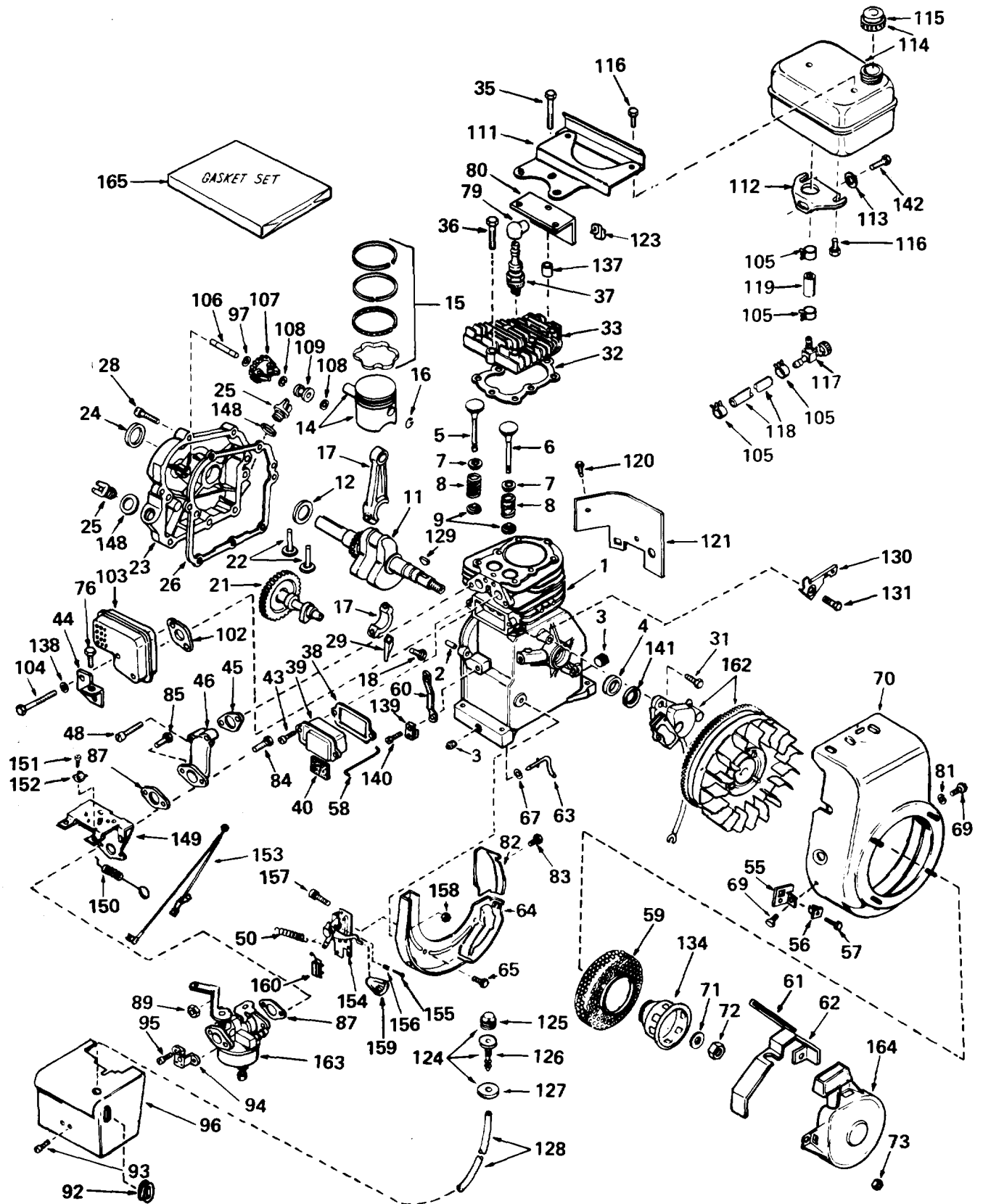


HANDLE ASSEMBLY

Ref. No.	Part No.	Description	No. Used
1	32128-13	Locknut	1
2	37-9150	Spring	1
3	37-8840	Spacer — Speed Selector	1
4	233-21	Knob	1
5	37-8820	Speed Selector	1
6	37-8710	Handle Right	1
7	37-8650	Decal — Traction Engage	1
8	37-8690	Lever — Auger Control	1
9	37-9140	Decal — Escutcheon Back	1
10	3254-5	Lockwasher	1
11	218-461	Nut	1
12	33-2010	Key	2
13	321-37	Capscrew	6
14	37-8730	Link Upper	2
15	37-8660	Decal — Auger Engage	1
16	32111-7	Cap Nut	2
17	37-9110	Grips	2
18	37-8680	Lever — Traction Control	1
19	32152-4	Locknut	4
20	3296-29	Locknut	4
21	3290-320	Push-On Speed Nut	1
22	20-2060	Chute Control Grip	1
23	3256-24	Washer	1
24	29-6370	Decal Chute Direction	1
25	25-6090	Bracket Chute Control Mounting	1

Ref. No.	Part No.	Description	No. Used
26	256-249	Nyliner	1
27	322-7	Capscrew	2
28	8-8570	Rod — Chute Control	1
29	37-8720	Handle Left	1
30	3234-14	Flange Screw	4
31	3290-196	Retained Nut	4
32	3290-238	Pyramidal Washer	1
33	3230-1	Carriage Bolt	1
34	3-6715	Spacer	1
35	11-7110	Bracket Worm	1
36	8-8600	Worm Gear Chute	1
37	32121-50	Roll Pin	1
38	3290-212	Spring Washer	1
39	3272-5	Cotter Pin	2
40	37-8750	Link — Auger Lower	1
41	37-9130	Clamp Control Rod	4
42	3230-2	Carriage Bolt	2
43	37-8780	Rod Speed Selector	1
44	3290-378	Tie Wrap	2
45	37-8980	Wire Assembly	1
46	29-5560	Key Switch	1
47	37-8810	Mount — Speed Selector	1
49	32128-10	Flanged Locknut	2
50	37-8830	Panel — Escutcheon	1
51	37-8670	Decal — Escutcheon	1
52	321-2	Capscrew	2

ENGINE TECUMSEH MODEL HS40-55513E



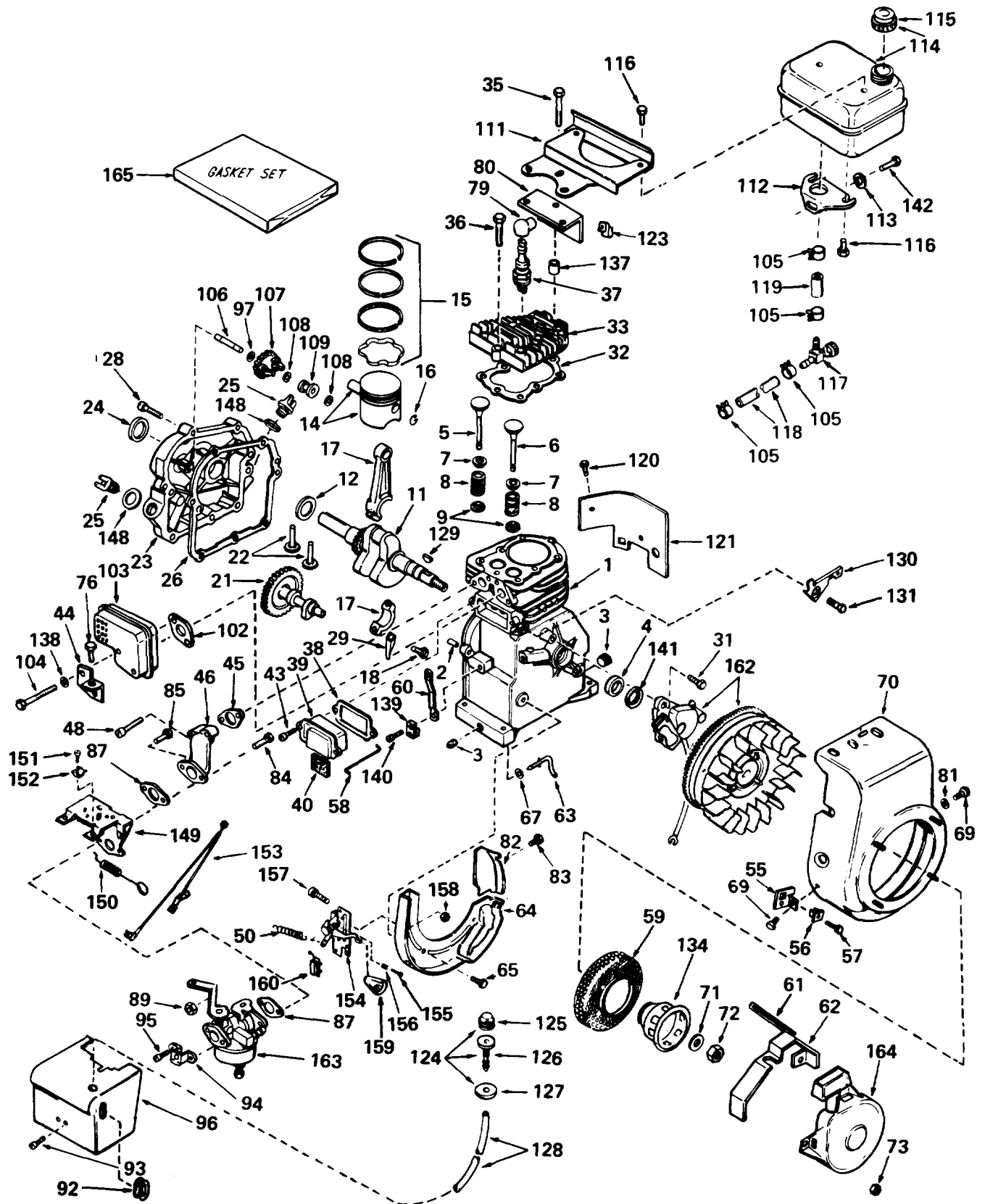
ENGINE TECUMSEH MODEL HS40-55513E

Ref. No.	Part No.	Description	No. Used
1	33014A	Cylinder Assy. (Incl. #2, 3 & 4)	1
2	26727	Pin, Dowel	2
3	27643	Plug, Sq. Hd. Pipe, 1/4-18 (Oil Drain)	2
4	32600	Seal, Oil	1
5	32644	Valve, Intake (Std.) (Incl. #7, 8 & 9)	1
5	32645	Valve, Intake (1/32 Oversize) (Incl. #7, 8 & 9)	1
6	29313B	Valve, Exhaust (Std.) (Incl. #7, 8 & 9)	1
6	29315B	Valve, Exhaust (1/32" Oversize) (Incl. #7, 8 & 9)	1
7	31671	Cap, Upper Valve Spring	2
8	31672	Spring, Valve	2
9	31673	Cap, Lower Valve Spring	2
11	32890	Crankshaft Assembly	1
12	32323	Washer, Thrust	1
14	32603A	Piston, Pin & Ring Assy. (Incl. #15 & 16) (Std.)	1
14	32604A	Piston, Pin & Ring Assy. (Incl. #15 & 16) (.010 Oversize)	1
14	32605A	Piston, Pin & Ring Assy. (Incl. #15 & 16) (.020 Oversize)	1
15	32606	Ring Set, Piston (Std.)	1
15	32607	Ring Set, Piston (.010 Oversize)	1
15	32608	Ring Set, Piston (.020 Oversize)	1
16	20381	Ring, Piston Pin Retaining	2
17	32875	Rod Assembly, Connecting (Incl. #18 & 29)	1
18	32610A	Screw, Connecting Rod	2
21	33158	Camshaft (Compression Release)	1
22	27241	Lifter, Valve	2
23	32700A	Cover, Cylinder (Incl. #24, 25, 106 & 148)	1
24	27897	Seal, Oil	1
25	27625	Plug, Oil Filler (Incl. #148)	2
26	*27677	Gasket, Cylinder Cover	1
28	30564	Screw, Hex Hd. Sems	7
29	32654	Dipper, Oil	1
31	650489	Screw, Hex Hd. Sems	2
32	*33015	Gasket, Cylinder Head	1
33	33016	Head, Cylinder	1
35	650694A	Screw, Hex Flange Hd.	5
36	6021A	Screw, Hex Flange Hd.	3
37	33636	Plug, Spark (Champion J-8 or Equivalent)	1
		Except for Canada	
37	34251	Resistor Spark Plug (Canadian Regulations require RJ-17LM Resistor Spark Plug)	1
38	*31619	Gasket, Valve Spring Cover	1
39	31337	Breather Assy. (Incl. #38 & 40)	1
40	31410	Element, Breather	1

Ref. No.	Part No.	Description	No. Used
43	650128	Screw, Fil. Hd. Sems	2
44	33333	Bracket, Carburetor Cover	1
45	*32649	Gasket, Intake	1
46	32859	Pipe, Intake	1
48	650664	Screw, Fil. Hd. Sems	2
50	31426	Spring, Extension	1
55	34126	Bracket, Grommet Mounting	1
56	28545	Grommet	1
57	650643	Screw, Pan Hd. Self-Tap.	1
58	32698	Link, Governor-to-Throttle	1
59	33668	Screen, Starter Cup	1
60	32871	Lever, Governor	1
61	32576	Seal, Snow Guard	2
62	34127	Guard, Starter	1
63	31334	Rod, Governor	1
64	+33342	Baffle, Blower Housing	1
65	650561	Screw, Hex Washer Hd. Durlock	2
67	28277	Washer, Flat	1
69	29212	Screw, Hex Hd. Sems	2
70	33663A	Housing, Blower	1
71	650763	Washer, Belleville	1
72	650607	Nut, Flywheel	1
73	29752	Nut & Lockwasher Assembly	4
76	650735	Screw, Hex Hd. Sems Taptite	1
79	610118	Cover, Spark Plug	1
80	33344	Baffle, Heat	1
81	650168	Washer, Flat	1
82	33341	Baffle, Extension	1
83	650701	Screw, Hex Washer Hd. Shakeproof Self-drilling	1
84	6202	Screw, Hex Hd.	1
85	650601	Screw, Fil. Hd.	1
87	*26756	Gasket, Carburetor	2
89	29752	Nut & Lockwasher Assembly	2
92	34213	Grommet, Carburetor Cover	1
93	650257	Screw, Pan Hd. Sems	2
94	32398	Bracket, Carburetor Cover	1
95	28820	Screw, Fil. Hd. Sems	2
96	34134	Cover, Carburetor	1
97	30590A	Washer, Flat	1
102	*26754	Gasket, Muffler	1
103	32648	Muffler	1
104	650327	Screw, Fil. Hd. Sems	2
105	26460	Clamp, Fuel Line	4
106	30574	Shaft, Mechanical Governor	1
107	30591	Gear Assy., Governor (Incl. #97)	1
108	29193	Ring, Retaining	2
109	30588A	Spool, Governor	1
111	28371B	Bracket, Fuel Tank — Upper	1
112	32762	Bracket, Fuel Tank — Lower	1
113	650675	Washer, Flat	1
114	33120	Tank Assembly, Fuel (Incl. #115 & 116)	1
115	30998B	Cap, Fuel Tank	1

+In original production the speed control assembly is riveted to the blower housing baffle. Replacement speed control assembly includes screws and nuts for mounting. Replacement baffle has threaded holes.

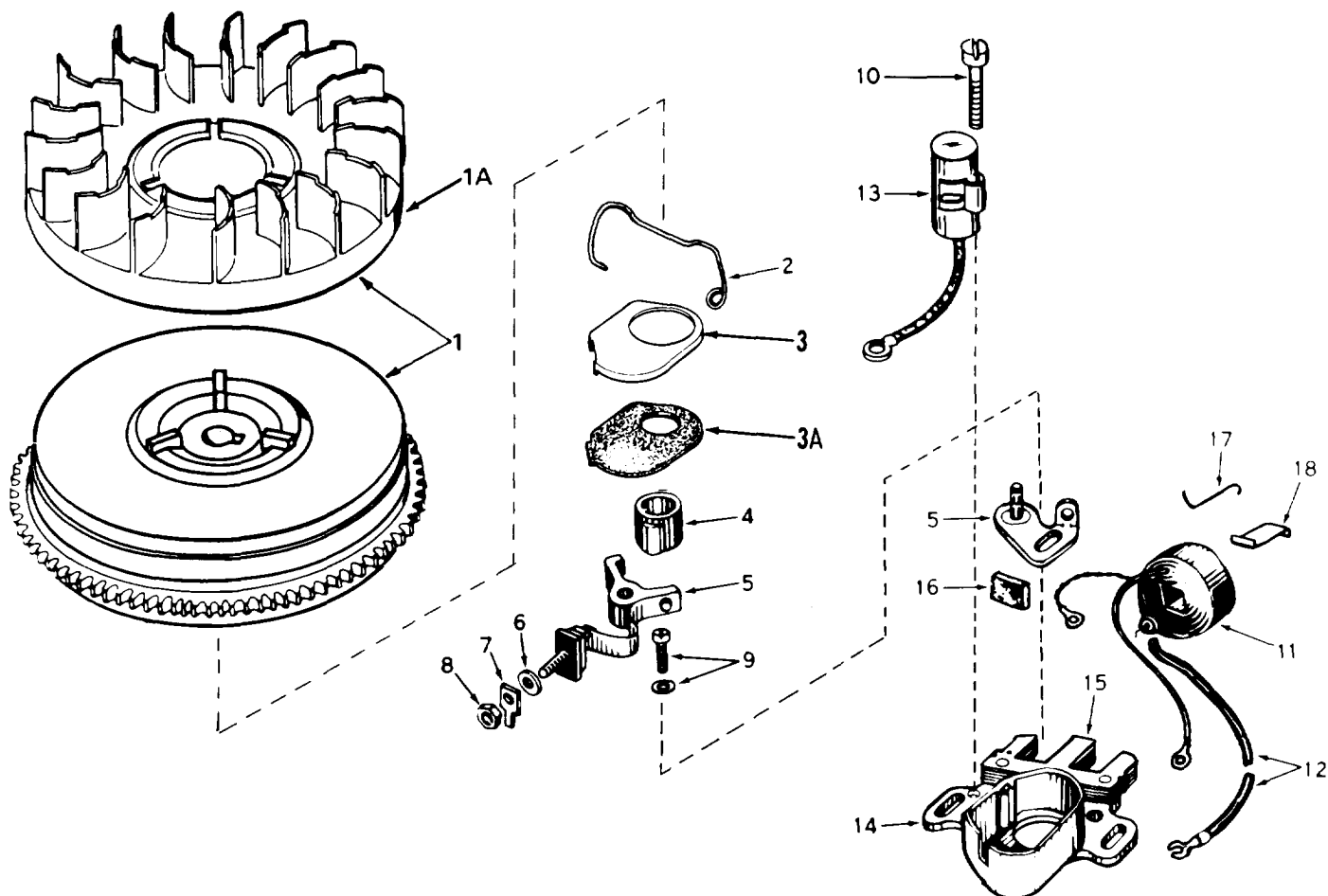
ENGINE TECUMSEH MODEL HS40-55513E (Continued)



ENGINE TECUMSEH MODEL HS40-55513E (Continued)

Ref. No.	Part No.	Description	No. Used	Ref. No.	Part No.	Description	No. Used
116	650665	Screw, Hex Washer Hd. Sems Self-Tap	4	148	*29673	Gasket, Oil Fill	2
117	32961	Shut-off Valve, Fuel	1	149	34123	Bracket, Speed Control	1
118	30705	Line, Fuel	1	150	34125	Control, Choke	1
119	29774	Line, Fuel	1	151	28942	Screw, Hex Hd. Sems	1
120	650128	Screw, Fil. Hd. Sems	1	152	27793	Clip, Conduit	1
121	29745	Extension, Blower Housing	1	153	34241	Wire, Ground	1
123	27275	Clip, Wire Retaining	1	154	+33858A	Control Assembly, Speed (Incl. #155 thru 158 & 160)	1
124	32182	Primer, Assy. (Incl. #125, 126 & 127)	1	155	650649	Screw, Fil. Hd.	1
125	32183	Bulb, Primer	1	156	31342	Spring, Compression	1
126	32184	Body, Primer	1	157	+650139	Screw, Fil. Hd. Sems	2
127	32312	Retainer, Primer Bulb	1	158	+30322	Nut & Lockwasher Assembly	2
128	32180B	Line, Primer	1	159	32410	Knob, Speed Control	1
129	610951	Key, Flywheel	1	160	610973	Terminal Assembly	1
130	34212	Bracket, Hold Down	1	162	610944A	Magneto (The complete magneto is not available as an assembly. The magneto number is shown for reference purposes only. Order component parts individually, as shown in parts list.)	1
131	650768	Screw, Hex Hd. Thread Forming W/Conical Washer	1	163	631929	Carburetor (Incl. 1 of #87)	1
134	33667	Cup, Starter	1	164	590473	Starter Assembly, Rewind	1
137	28212	Spacer	2	165	33240	Gasket Set (Incl. Items Marked *)	1
138	16644	Washer	2				
139	31335	Clamp, Governor Lever	1				
140	650648	Screw, Hex Washer Hd.	1				
141	33876	Gasket, Stator	1				
142	650805	Screw, Hex Hd. W/Belleville Washer	1				

+In original production the speed control assembly is riveted to the blower housing baffle. Replacement speed control assembly includes screws and nuts for mounting. Replacement baffle has threaded holes.



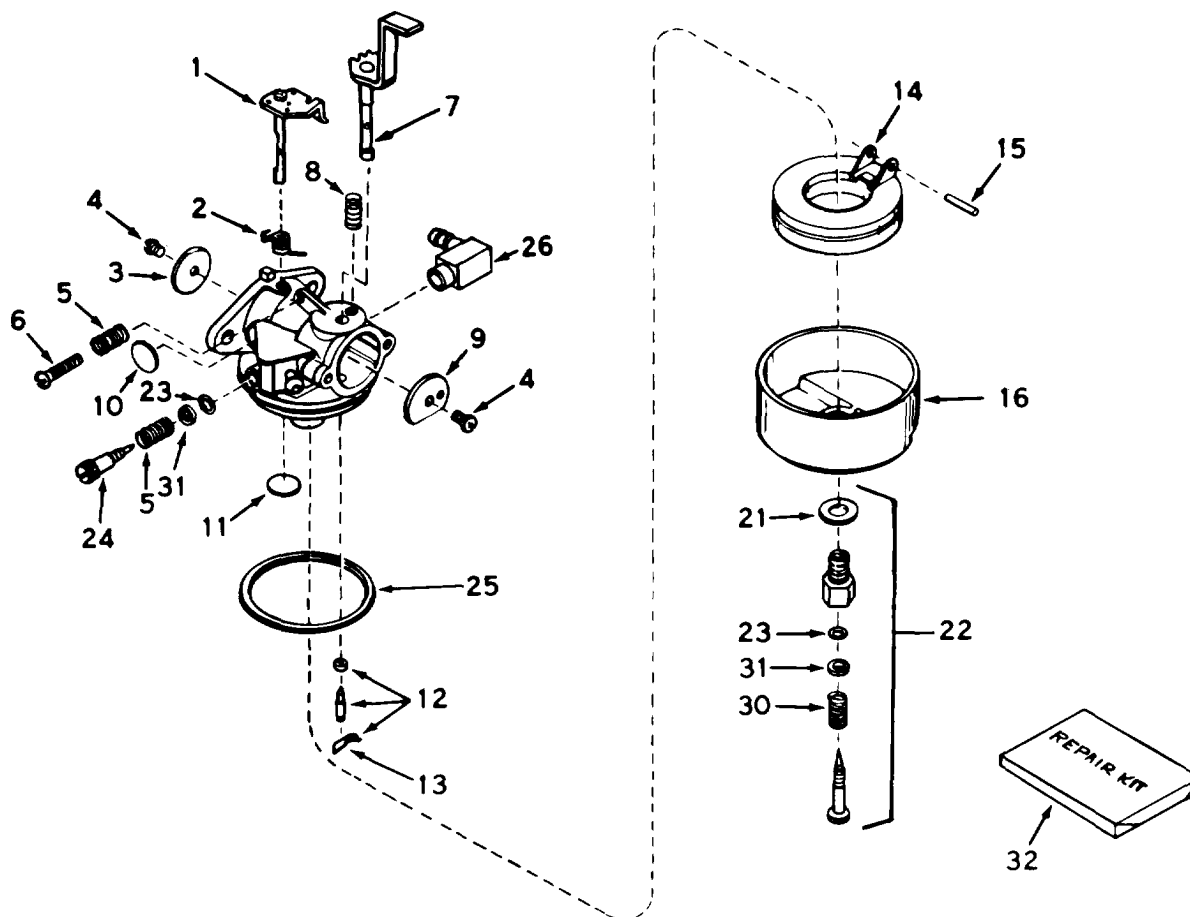
MAGNETO NO. 610944A

Ref. No.	Part No.	Description	No. Used
1	33701B	Flywheel (Incl. #1A, 3 & 3A)	1
1A	610933	Fan	1
2	30551	Spring, Breaker Box	
		Dust Cover	1
3	610947	Cover, Dust	1
3A	610950	Gasket, Dust Cover	1
4	30992	Cam, Breaker	1
5	30547A	Contact Assy., Breaker	1
6	610385	Washer, Terminal	1
7	33356	Tab, Ground Terminal	1
8	601408	Nut Terminal	1
9	29181	Screw & Washer, Breaker	1

Ref. No.	Part No.	Description	No. Used
10	610593	Screw, Condenser	1
11	30560A	Coil Assy. (Incl. #12)	1
12	30554	Wire, Lead	1
13	30548A	Condenser	1
14	30545	Core & Plate	1
15	30561B	Stator Assy. (Incl. #2, 3, 3A, 5 thru 14 & 16 thru 18)	1
16	30549	Felt, Cam Wiper	1
17	31311	Clip, Coil Locking	1
18	29629	Spring, Coil Wedge	1

*The complete magneto is not available as an assembly. The magneto number is shown for reference purposes only.

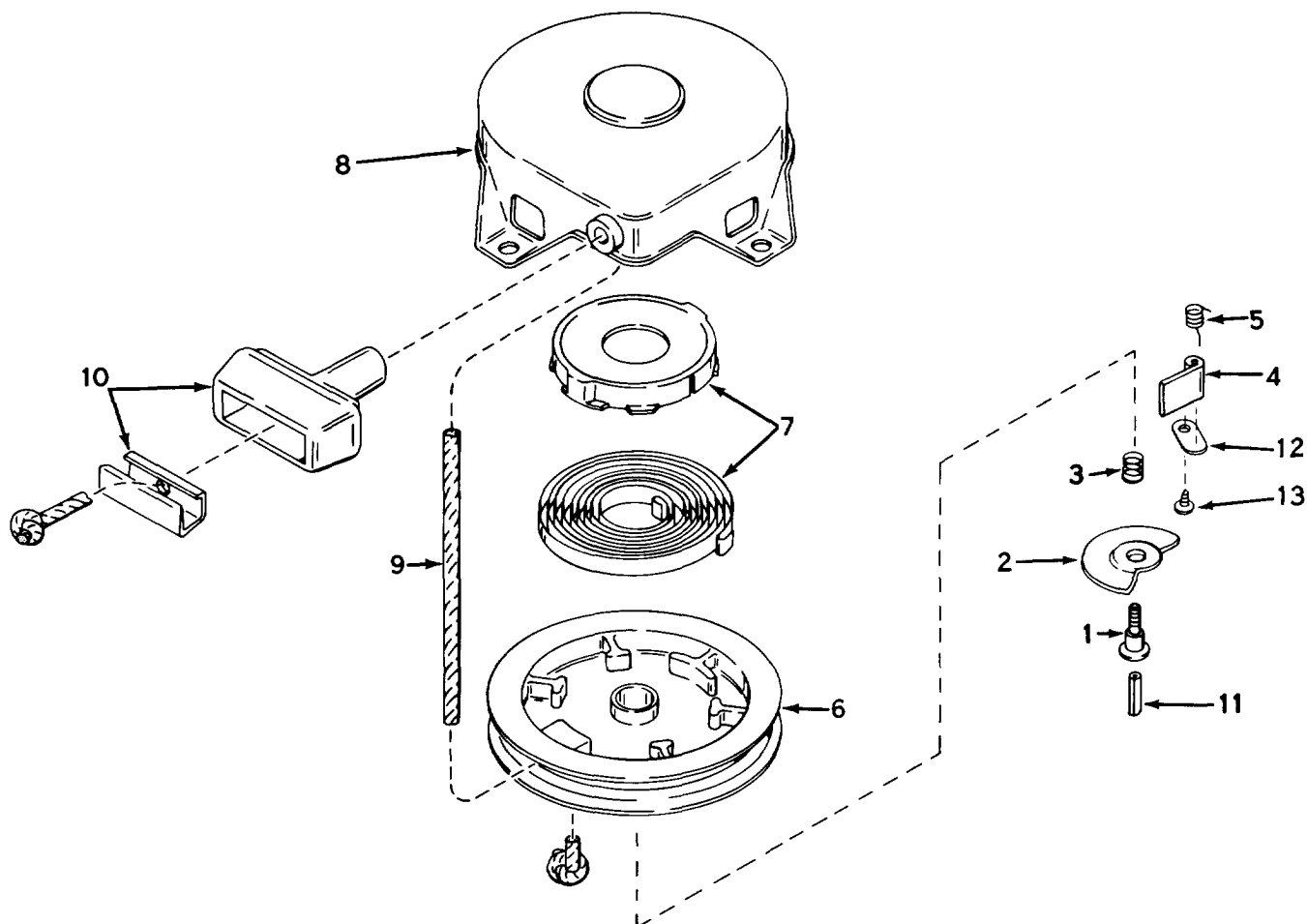
10 Order component parts individually, as shown in parts list.



CARBURETOR NO. 631929

Ref. No.	Part No.	Description	No. Used
1	631615	Shaft & Lever Assy., Throttle	1
2	631279	Spring, Throttle Return	1
3	631036	Shutter, Throttle	1
4	650506	Screw	2
5	630766	Spring, Idle Regulating Screw	2
6	650417	Screw, Idle Regulating	1
7	631908	Shaft & Lever Assy., Choke	1
8	630735	Spring, Choke Stop	1
9	631815	Shutter, Choke	1
10	*630748	Plug, Welch	1
11	*631027	Plug, Welch	1
12	*631021	Inlet Needle, Seat & Clip Assy. (Incl. #13)	1
13	631022	Clip, Inlet Needle	1

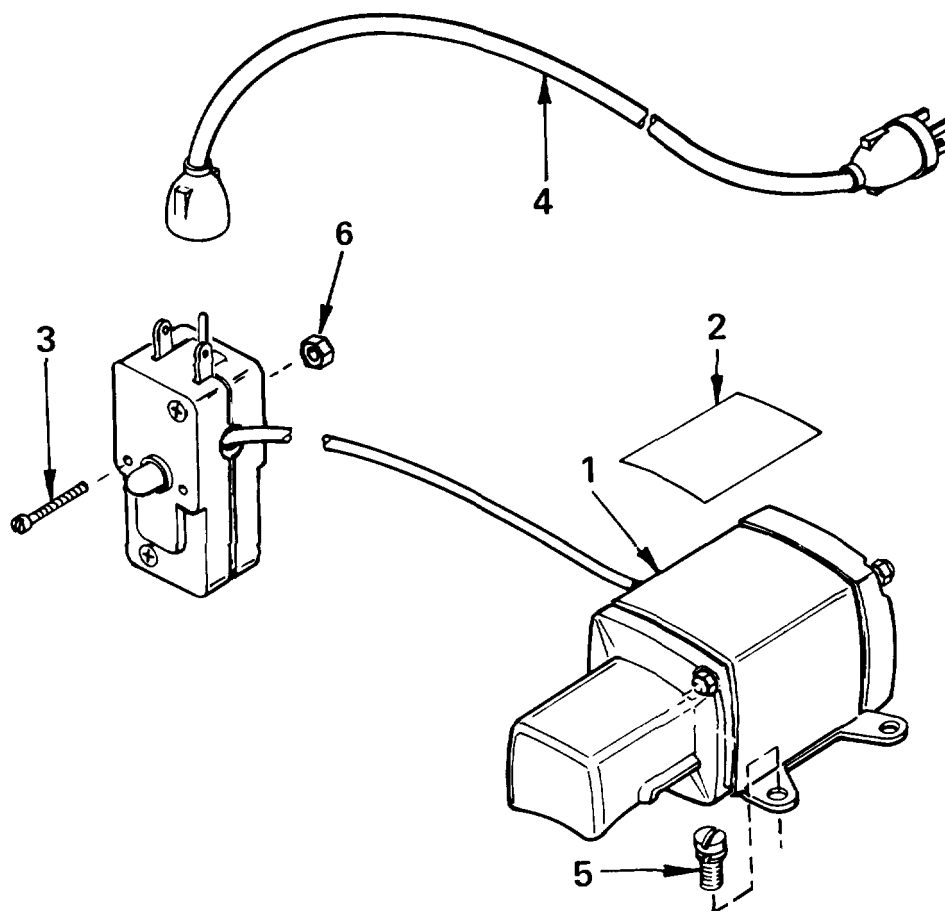
Ref. No.	Part No.	Description	No. Used
14	632019	Float, Carburetor	1
15	*631024	Shaft, Float	1
16	631867	Bowl, Float	1
21	27110	Gasket, Bowl-to-body	1
22	*31839	Adjustment Screw Assy., Main (Incl. #21, 23, 30 & 31)	1
23	*630740	"O" Ring, Adjustment Screw	2
24	*631078	Screw, Idle Adjustment	1
25	*631028	Gasket, Bowl-to-body	1
26	631807	Fitting, Fuel Inlet	1
30	630738	Spring, Main Adjustment Screw	1
31	630739	Washer, Flat	2
32	31840	Repair Kit (Incl. Items Marked *)	1



REWIND STARTER NO. 590473

Ref. No.	Part No.	Description	No. Used
1	590409A	Screw	1
2	590474	Cam, Dog	1
3	590411	Spring, Brake	1
4	590148	Dog, Starter	1
5	590475	Spring, Dog	1
6	590478	Pulley	1
7	590414	Spring & Keeper Assembly	1

Ref. No.	Part No.	Description	No. Used
8	590415	Housing Assembly, Starter (Incl. #1)	1
9	30691	Rope, Starter	1
10	590387	Handle, Assembly, Starter	1
11	590459	Pin, Centering	1
12	590476	Retainer, Dog	1
13	590477	Screw, #6 x 5/16	1

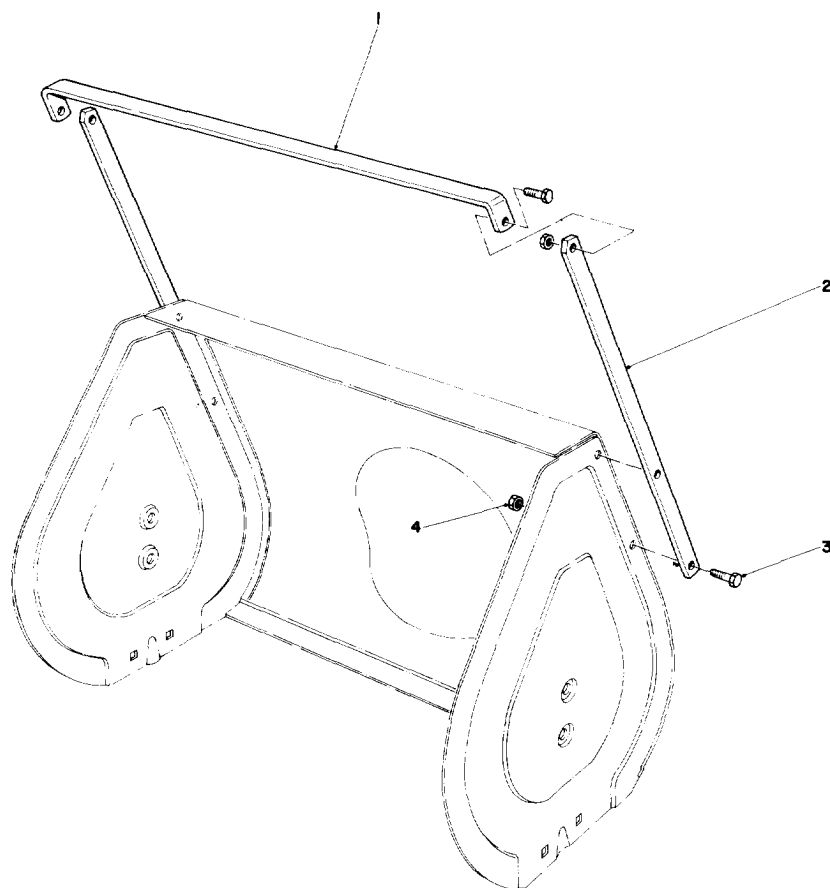


STARTER MOTOR KIT MODEL 23-3790

Ref. No.	Part No.	Description	No. Used
1†	33517A	Motor, Cranking (CSA Approved) (Incl. #2 thru 6)	1
2†	34161	Decal	1
3†	650741	Screw, Hex hd. self tap	2

Ref. No.	Part No.	Description	No. Used
4†	32450A	Cord, Extension	1
5†	650759	Screw, Hex washer hd.	3
6†	650742	Nut & Lockwasher	2

†Note: Obtain individual replacement parts from your local Tecumseh Dealer.



DRIFT BREAKER KIT NO. 37-7020

Ref. No.	Part No.	Description	No. Used
1	38-0760	Drift Breaker – Top	1
2	38-0750	Drift Breaker – Side	2

Ref. No.	Part No.	Description	No. Used
3	322-4	Capscrew	6
4	3296-29	Locknut	6

THE TORO PROMISE

It is Toro's policy to design and produce TORO products to provide our customers with a high level of performance and durability in normal operation. Our products, however, are produced in high volume, and it is inevitable that occasionally a unit will reach a customer with a defect in materials or workmanship which causes the unit to fall below the normal high

level of TORO performance. Invariably, such a defect will be noticed in a residential product within one year after purchase. Recognizing this possibility, Toro has established a simple guarantee policy and procedure that is intended to assure customer satisfaction. This guarantee statement is as follows:

The Toro Promise

A One Year Limited Warranty

The Toro Company promises to repair any TORO Product if defective in materials or workmanship. The following time periods from the date of purchase apply:

Residential Product 1 Year

Residential Products Used Commercially 45 Days

The costs of parts and labor are included, but the customer pays the transportation costs. Just return any residential product to an Authorized TORO Service Dealer or TORO Distributor.

Should you feel your TORO is defective and wish to rely on The Toro Promise, the following procedure is recommended:

1. Contact any Authorized TORO Service Dealer, TORO Master Service Dealer, or TORO Distributor (the Yellow Pages of your telephone directory is a good reference source).
2. He will either instruct you to return the product to him or recommend another Authorized TORO Service outlet which might be more convenient.
3. Bring the product along with your original sales slip, or other evidence of purchase date, to the service dealer.
4. The servicing dealer will inspect the unit, advise you whether the product is defective and, if so, make all repairs necessary to correct the defect without extra charge to you.

If for any reason you are dissatisfied with the dealer's analysis of the defect or the service performed, you may contact us.

Write:

TORO Customer Service Department
8111 Lyndale Avenue South
Minneapolis, Minnesota 55420

The above remedy of product defects through repair by an Authorized TORO Service Dealer is the purchaser's sole remedy for any defect.

THERE IS NO OTHER EXPRESS WARRANTY. ALL IMPLIED WARRANTIES OF MERCHANTABILITY AND

FITNESS FOR USE ARE LIMITED TO THE DURATION OF THE EXPRESS WARRANTY.

Some states do not allow limitation on how long implied warranty lasts, so the above limitation may not apply to you.

This Warranty applies only to parts or components which are defective and does not cover repairs necessary due to normal wear, misuse, accidents, or lack of proper maintenance. Regular, routine maintenance of the unit to keep it in proper operating condition is the responsibility of the owner.

All warranty repairs reimbursable under The Toro Promise must be performed by an Authorized TORO Service Dealer using Toro approved replacement parts.

Repairs or attempted repairs by anyone other than an Authorized TORO Service Account are not reimbursable under The Toro Promise. In addition, these unauthorized repair attempts may result in additional malfunctions, the correction of which is not covered by warranty.

The Toro Company is not liable for indirect, incidental or consequential damages in connection with the use of the product including any cost or expense of providing substitute equipment or service during periods of malfunction or non-use.

Some states do not allow the exclusion of incidental or consequential damages, so the above exclusion may not apply to you.

This warranty gives you specific legal rights, and you may also have other rights which vary from state to state.

PRODUCT CHANGES

In an effort to make improvements available to TORO owners as quickly as possible, minor changes are incorporated into Toro's products from time to time that do not become immediately shown in the Parts Catalog. If such a change apparently has been made in your unit, which is not reflected in your manual, see your TORO Distributor or his Authorized TORO Service Dealer for information and part numbers.

IDENTIFICATION AND ORDERING

Model and Serial Numbers

The Snowthrower has two identification numbers: a model number and a serial number. The two numbers are stamped on a decal which is located on back of engine mounting plate. In any correspondence concerning the Snowthrower, supply model and serial numbers to assure that correct information and replacement parts are obtained.

To order replacement parts from an Authorized TORO Service Dealer, supply the following information:

1. Model and serial numbers of the Snowthrower.
2. Part number, description, and quantity of part(s) desired.

NOTE: Do not order by reference number if a parts catalog is being used; use the **PART NUMBER**.

Keep Your TORO All Toro



Insist on Genuine Toro Parts

MAINTENANCE RECORD

[illegible]