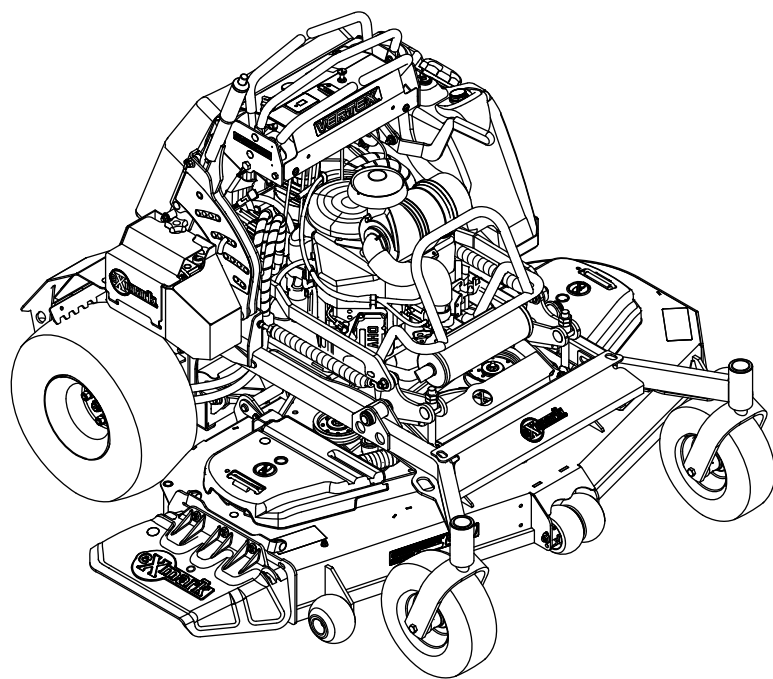




# **VERTEX® S-SERIES**

**Model No. VXS730GKA60400—Serial No. 413950474 and Up**

Picture below may not reflect actual product.



# **Parts Manual**

Part No. 4506-350 Rev. A

# Ordering Replacement Parts

To order replacement parts, please supply the part number, the quantity, and the description of each part desired.

## Understanding Reference Numbers

Each identified part in an illustration has a reference number. The reference number for a part also appears in the parts list, along with other information about the part.

This catalog uses two special reference number formats, one to indicate parts in a service assembly and another to indicate the quantity of a given part in an illustration.

## Service Assembly Reference Numbers

Parts in service assemblies have reference numbers in the form a:b. The a represents the reference number of the entire service assembly and the b represents a sequential number unique to each part within the service assembly.

For example, a wheel assembly might be identified by reference number 6, the tire by 6:1, the valve by 6:2, and the wheel by 6:3. When you order the assembly identified by reference number 6, you receive all parts identified by reference numbers 6:1, 6:2, and 6:3. However, you may also order any part individually. Reference numbers of this type appear in illustration and in parts lists.

## Reference Numbers Indicating Quantity

In an illustration, if a reference number indicates more than one part, the reference number has the form nX y. The n represents the quantity of the part, the X is the multiplication symbol, and the y represents the reference number.

For example, in an illustration, the reference number 2X 37 means that two of the parts identified by reference number 37 are indicated.

# Touch Up Paint

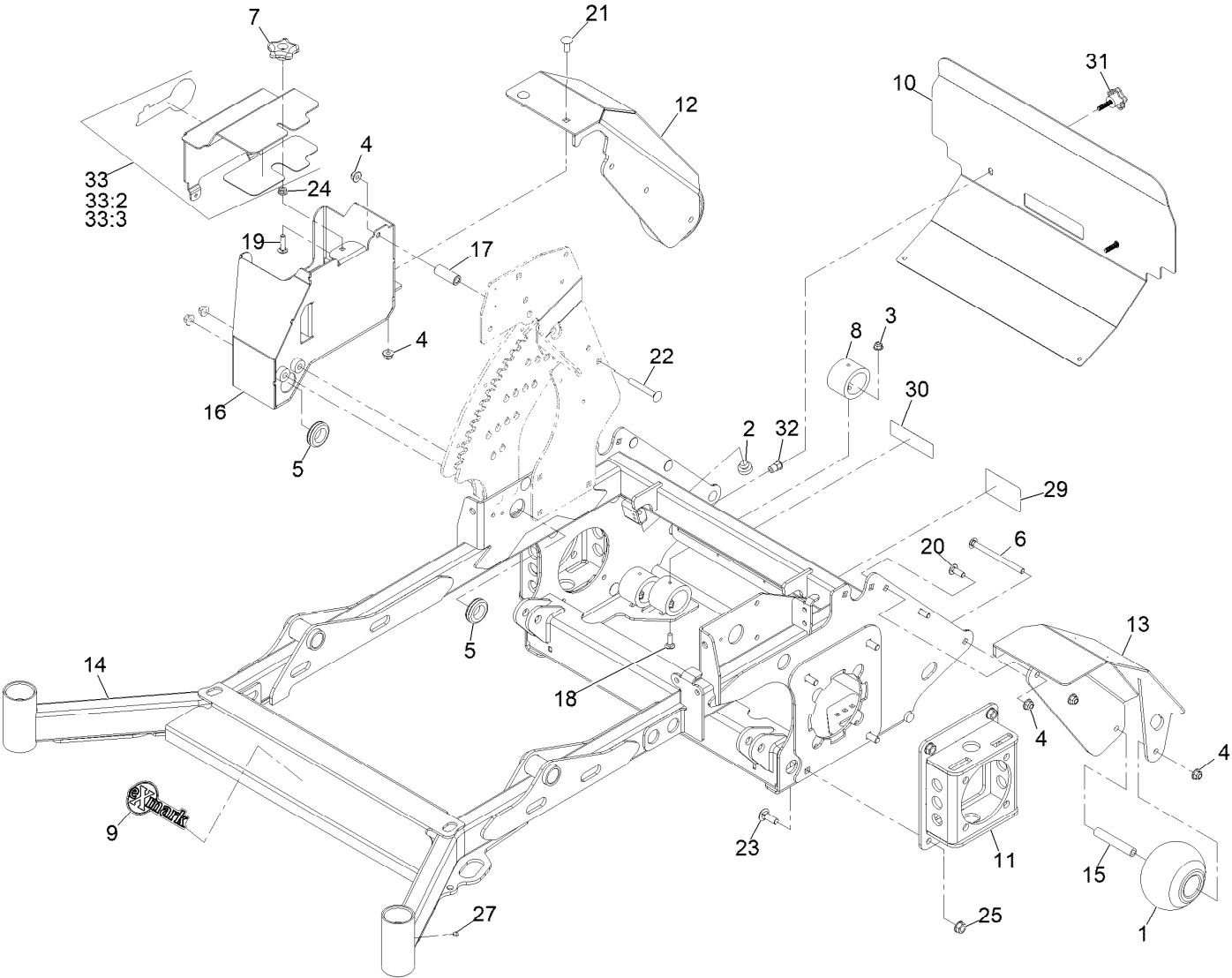
Exmark black touch up spray paint – gloss black.

Exmark red touch up paint (spray paint – P/N 1-850337 - .6 oz liquid bottle – P/N 103-9140).

# Contents

Main Frame Assembly .....	4
Front Caster and Fork Assembly .....	6
Caster Wheel and Fork Assembly .....	8
Hydraulic Assembly .....	10
Rear Wheel Assembly .....	12
Park Brake Assembly .....	14
Fuel Assembly .....	16
Fuel Tank Assembly .....	18
Controls and Tower Assembly .....	20
Motion Control Assembly (Short) .....	22
Motion Control Assembly (Long) .....	24
Electrical Assembly .....	26
Harness Assembly .....	28
Deck Lift Assembly .....	30
Engine Assembly .....	32
Complete Deck Assembly .....	34
Deck Assembly .....	36
Deck W/Decals Assembly .....	38
Idler Arm Assembly No. 116-3806 .....	40
Platform and Pad Assembly .....	42

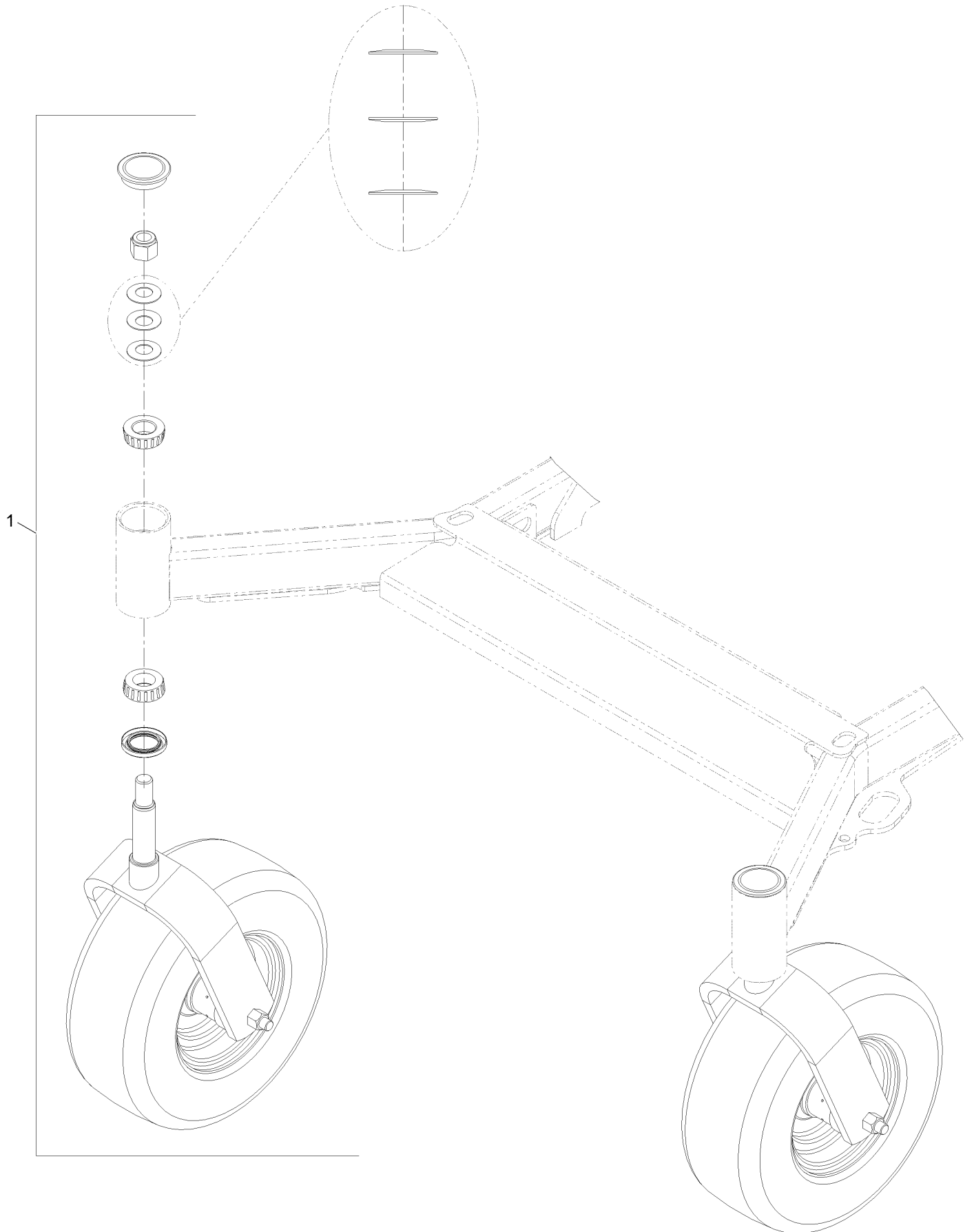
# Main Frame Assembly



## Main Frame Assembly (continued)

<i>Ref.</i>	<i>Part Number</i>	<i>Qty.</i>	<i>Description</i>	<i>Ref.</i>	<i>Part Number</i>	<i>Qty.</i>	<i>Description</i>
1	103-8415	2	Roller-Anti-Scalp	18	3230-2	4	Bolt-Carriage 5/16-18 X 1
2	104-1412	2	Bumper-Rubber	19	3230-29	1	Screw-CARR
3	104-8300	4	Nut-Nyloc 5/16-18 Flg	20	3231-22	4	Bolt-Carriage 3/8-16 X 1
4	104-8301	9	Nut-Nyloc 3/8-16 Flg	21	3231-27	2	Bolt-Carriage 3/8-16 X 7/8
5	108-3723	2	Grommet	22	3231-9	1	Bolt-Carriage 3/8-16 X 2 3/4
6	109-6795	2	Bolt-Carriage 3/8-16 X 5	23	3232-2	8	Bolt-CARR
7	117-5976	1	Knob-Handle	24	32128-20	1	Nut-Whizlock 5/16-18
8	135-2548	4	Bumper-Isolator	25	32128-37	8	Nut-Whizlock 7/16-14
9	126-6575	1	Decal-Exmark Logo	27	1-811010	2	Plug
10	142-8804-03	1	Guard-Rear Foot	29	116-8253	1	Decal-Drive Release
11	142-8813-03	2	Wld-Mtr Mount 60	30	112-9028	1	Decal-Cover, Missing
12	142-6264-01	1	Fender- Wheel RH [red]	31	139-2401	2	Knob
13	142-6265-01	1	Fender- Wheel LH [red]	32	137-1218	2	Nut-Clinch
14	142-8842	1	Mainframe ASM - 60	33	142-8510	1	ASM-Lid Battery W/Pad
15	142-6400	2	Spacer- Roller	33:2	142-9384	1	Pad-Battery Box Lid
16	142-6571-03	1	Weld-Battery Box	33:3	126-6575	1	Decal-Exmark Logo
17	142-6675	1	Spacer- Roller				

# Front Caster and Fork Assembly

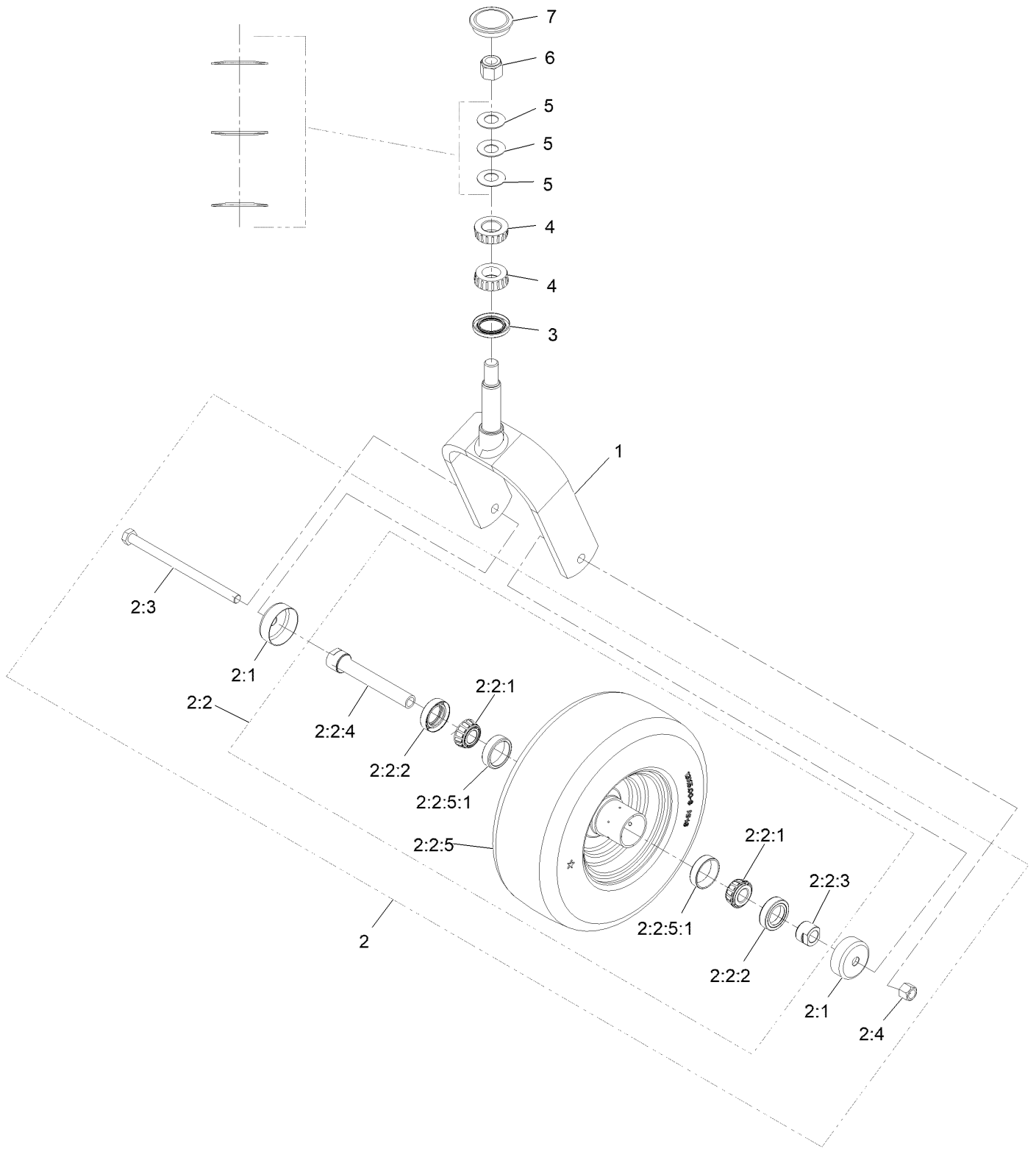


# Front Caster and Fork Assembly (continued)

<i>Ref.</i>	<i>Part Number</i>	<i>Qty.</i>	<i>Description</i>
1		2	ASM-Front Caster W/Fork ●

● Not serviced separately

# Caster Wheel and Fork Assembly



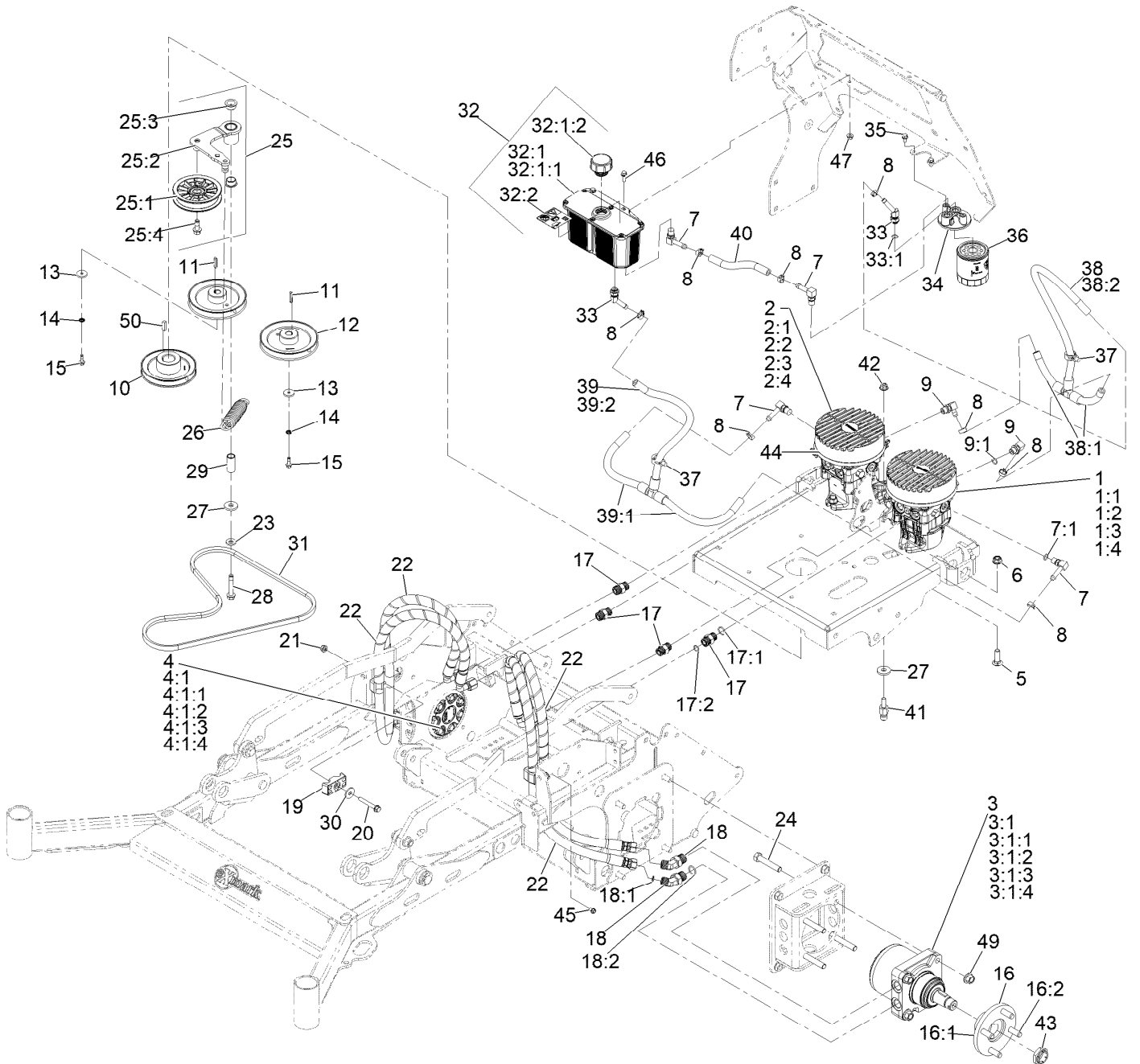
## Caster Wheel and Fork Assembly (continued)

<i>Ref.</i>	<i>Part Number</i>	<i>Qty.</i>	<i>Description</i>	<i>Ref.</i>	<i>Part Number</i>	<i>Qty.</i>	<i>Description</i>
1	142-4770-01	1	Weld-Caster, Fork	2:2:5:1	1-633584	2	Bearing-Cup
2	109-9126	1	Wheel & Tire ASM	2:3	325-42	1	Screw-HH 1/2-13 X 8
2:1	103-2768	2	Guard-Seal	2:4	3296-23	1	Nut-Nyloc 1/2-13
2:2		1	Wheel And Tire ASM ●	3	116-5647	1	Seal-Grease
2:2:1	1-633585	2	Bearing-Cone Tapered Roller	4	1-543509	2	Cone-Bearing Tapered Roller
2:2:2	103-0063	2	Seal-Double Lip	5	1-633508	3	Washer-Spring Disc
2:2:3	103-3051	1	Spacer-Nut ■	6	3296-51	1	Nut-Nyloc 3/4-10
2:2:4	126-5360	1	Axle-Caster	7	103-4882	1	Cap-Grease
2:2:5		1	Wheel And Tire ASM ●				

● Not serviced separately

■ Use Pro-Lock, Nut Type (P/N 1-840022, .5ml tube) on threads.

# Hydraulic Assembly



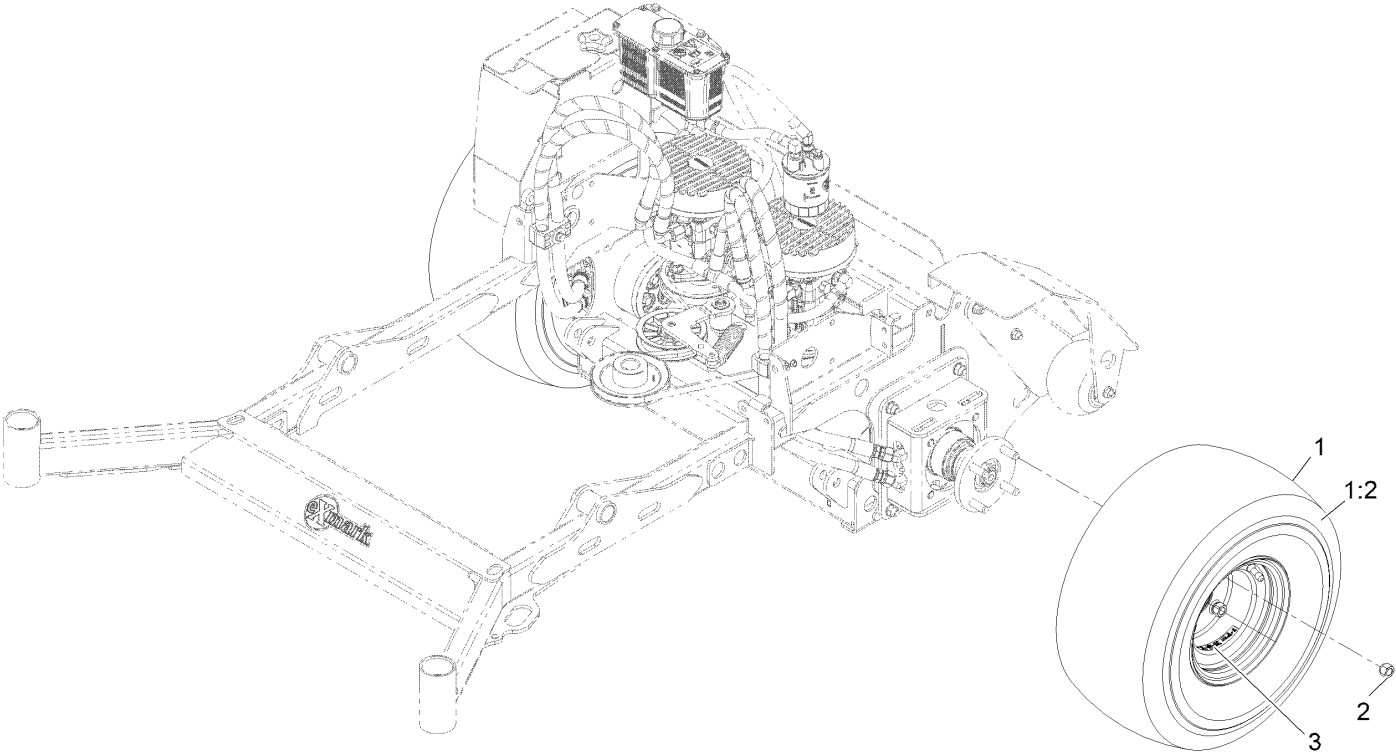
## Hydraulic Assembly (continued)

Ref.	Part Number	Qty.	Description	Ref.	Part Number	Qty.	Description
1	142-8892	1	Pump-12Cc Lt W/Shock Valve	18:2	237-80	1	O-Ring
1:1	126-2479	1	Kit, 10Cc/12Cc Pump Kit	19	94-8105	4	Clamp-Tube
1:2	105-6184	1	Seal Overhaul Kit	20	139-4479	2	Screw-HHF
1:3	103-7489	1	Guard, Pw Pump Fan	21	104-8300	2	Nut-Nyloc 5/16-18 Flg
1:4	103-7488	1	Fan, Pw Pump Cooling	22	142-6300	4	Hose ASM-HYD HP
2	142-8893	1	Pump-12Cc Rt W/Shock Valve	23	98-5975	1	Washer-Spring Disc 3/8
2:1	126-2479	1	Kit, 10Cc/12Cc Pump Kit	24	325-11	8	Screw-HH 1/2-13 X 2 3/4
2:2	105-6184	1	Seal Overhaul Kit	25	142-6821	1	ASM-Pump Idler
2:3	103-7489	1	Guard, Pw Pump Fan	25:1	109-4077	1	Pulley-Idler, Flat
2:4	103-7488	1	Fan, Pw Pump Cooling	25:2	142-6820	1	ASM-Pump Idler Arm
3	142-8578	1	Motor, T1240 LH	25:3	109-8054	2	Bushing-Flanged
3:1	130-1788	1	Seal Kit	25:4	126-1680	1	Screw-HHF 5/16-18 X 2 1/4
3:1:1		5	Seal-Ring, Viton ●■	26	135-1272	1	Spring, Extension
3:1:2		1	Seal-Commutator ●■	27	1-373034	2	Washer
3:1:3		1	Seal-Dirt/Water, Hi Temp ●■	28	126-2956	1	Screw-HHF 3/8-16 X 2 1/4
3:1:4		1	Seal-Shaft ●■	29	126-2954	1	Pivot, Idler
4	142-8577	1	Motor, T1240 RH	30	52-2861	2	Washer
4:1	130-1788	1	Seal Kit	31	142-8149	1	Belt- Cog A 54
4:1:1		5	Seal-Ring, Viton ●■	32	126-1248	1	ASM, HYD Reservoir
4:1:2		1	Seal-Commutator ●■	32:1		1	Reservoir-HYD ■
4:1:3		1	Seal-Dirt/Water, Hi Temp ●■	32:1:1	103-1948	1	Cap-Reservoir, HYD
4:1:4		1	Seal-Shaft ●■	32:1:2	142-2792	1	O-Ring
5	3232-3	4	Bolt-Carriage 7/16-14 X 1 1/2	32:2	115-4212	1	Decal-Warning
6	114-8417	4	Nut-Hex Flange 7/16-14	33	103-1807	2	Fitting-Barbed, 45 DEG
7	100-4887	4	Fitting-Elbow, 90	33:1	237-42	1	O-Ring
7:1	237-42	1	O-Ring	34	103-2888	1	Head-Filter
8	103-1988	8	Clamp-Hose 11/16	35	3234-13	2	Screw-HH Flg 1/4-20 X 1/2
9	126-2927	2	Fitting-90 DEG	36	109-4180	1	Element, Oil Filter
9:1	237-42	1	O-Ring	37	32180-030	2	Clip-Tie
10	116-1946	1	Sheave-Pump, Drive	38	142-7809	1	ASM-Hydraulic Lo-Pres
11	135-7971	2	Key-5Mm X 5Mm X 29Mm	38:1	142-6776	2	Hose, LP Hydro
12	142-6433	2	Sheave-Pump	38:2	142-6775	1	Hose, LP Hydro
13	142-8011	2	Washer-1.00 OD X .25 ID	39	142-7810	1	ASM-Hydraulic Lo-Pres
14	1-323235	2	Washer-Spring	39:1	142-6773	2	Hose, LP Hydro
15	142-8012	2	Screw-HHF M6-1 X 20Mm W/Patch Lock	39:2	142-6772	1	Hose, LP Hydro
16	18-3209	2	Wheel Hub/Stud ASM	40	142-6771	1	Hose, LP Hydro
16:1	10-6870-03	1	Hub-Wheel	41	126-0423	1	Pin-Spring, Anchor
16:2	10-6830	4	Stud-Type, Drive	42	104-8301	1	Nut-Nyloc 3/8-16 Flg
17	340-4	4	Fitting-Straight	43	116-1399	2	Nut-Slotted 1-20 Unef-3B Gr8
17:1	237-30	1	O-Ring	44	1-303287	4	Tie-Cable 5 1/2 (Small)
17:2	237-79	1	O-Ring	45	137-4795	2	Screw
18	340-89	4	Fitting-HYD, 45 DEG	46	3234-4	2	Screw-HH Flg 1/4-20 X 3/4
18:1	237-30	1	O-Ring	47	32128-32	2	Nut-Hex 1/4-20 Side Lock
				49	99-5107	8	Nut-Lock 1/2-13
				50	1-807259	1	Key-Machine 1/4 X 1/4 X 1

● Not illustrated

■ Not serviced separately

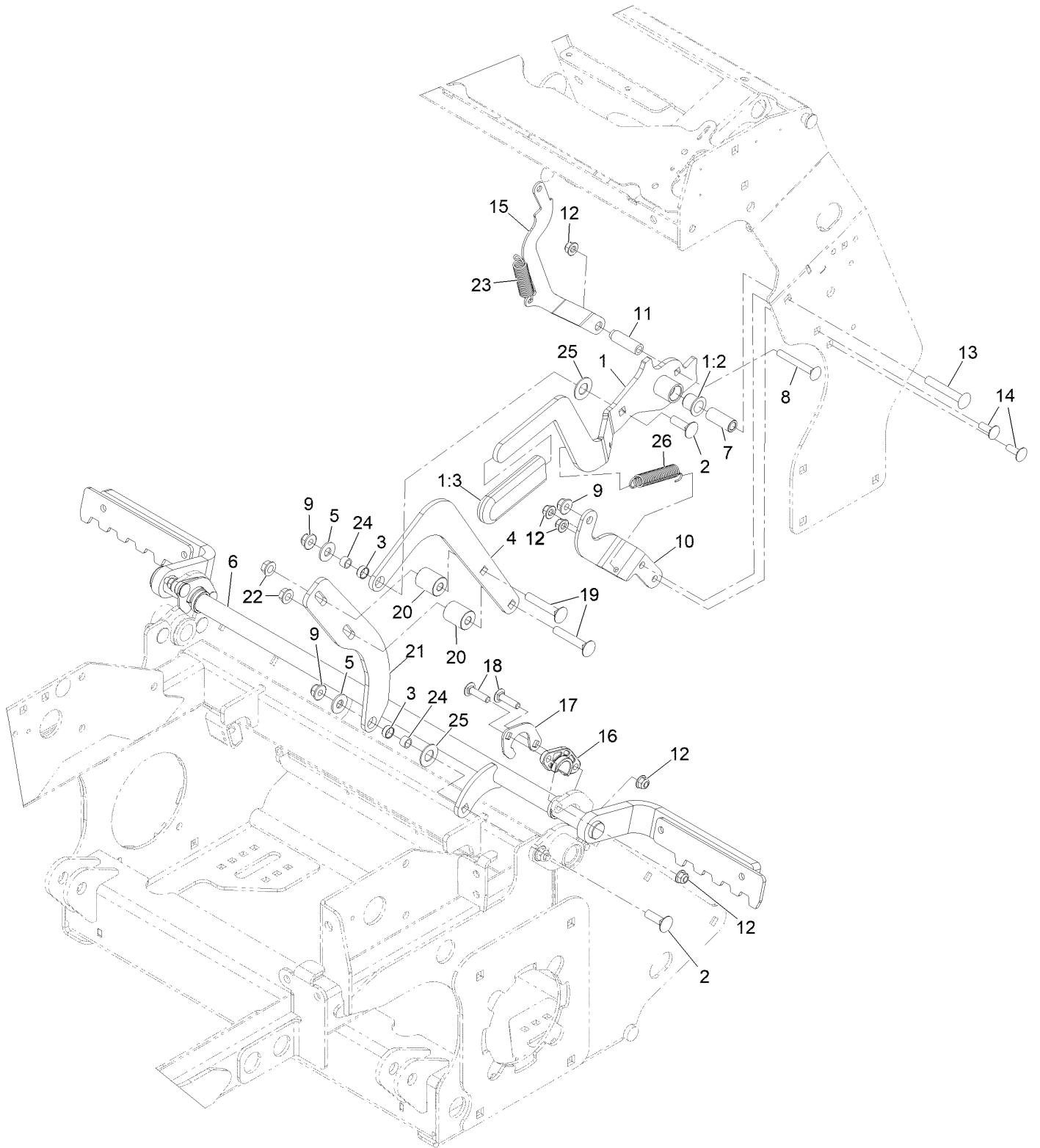
# Rear Wheel Assembly



## Rear Wheel Assembly (continued)

<i>Ref.</i>	<i>Part Number</i>	<i>Qty.</i>	<i>Description</i>	<i>Ref.</i>	<i>Part Number</i>	<i>Qty.</i>	<i>Description</i>
1	142-6054	2	Wheel/Tire ASM	2	242-50	8	Nut-Lug 1/2-20
1:2	142-6416	1	Tire	3	126-2055	2	Decal-Torque, Wheel Hub Lug

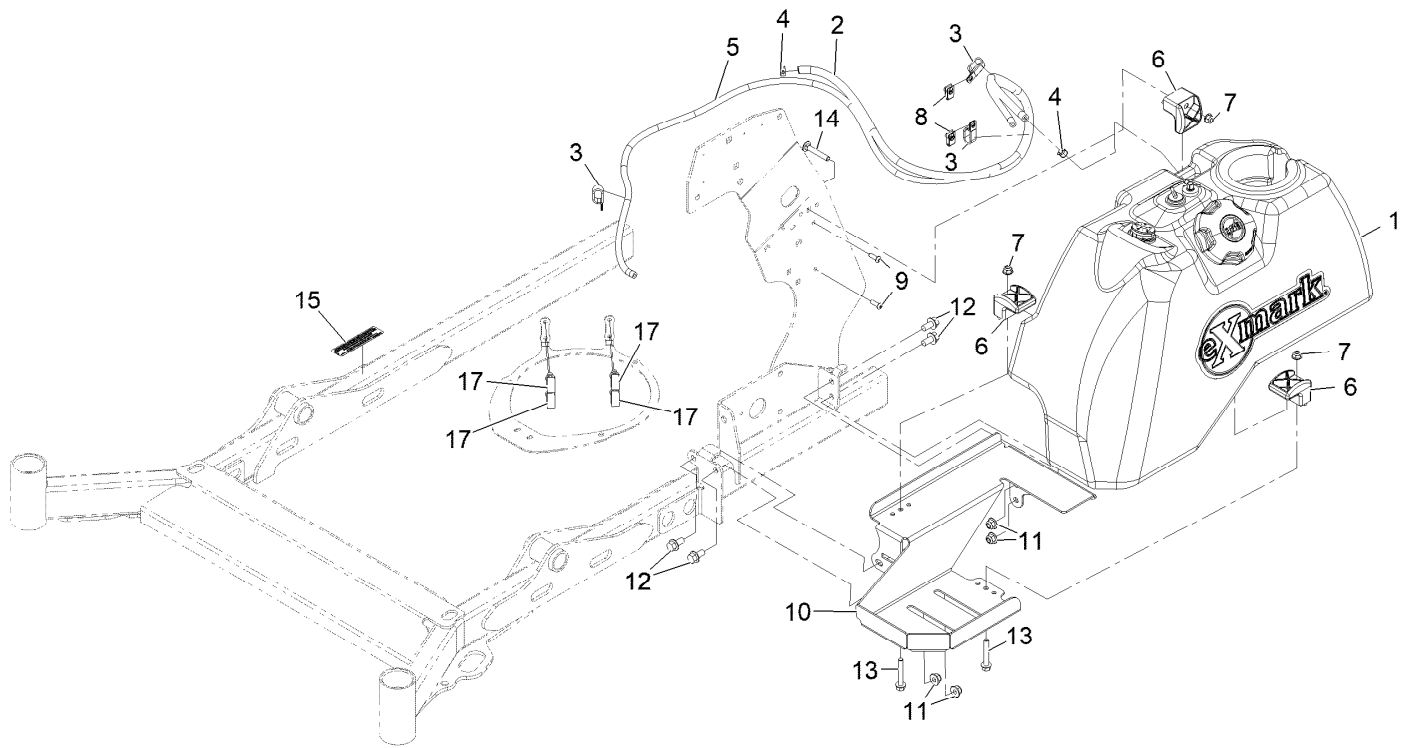
# Park Brake Assembly



## Park Brake Assembly (continued)

<i>Ref.</i>	<i>Part Number</i>	<i>Qty.</i>	<i>Description</i>	<i>Ref.</i>	<i>Part Number</i>	<i>Qty.</i>	<i>Description</i>
1	146-0208	1	ASM-Handle Brake	13	3231-44	1	Bolt-Carriage 3/8-16 X 2 1/2
1:2	108-2974	2	Bushing-Flange	14	3230-10	2	Bolt-Carriage 5/16-18 X 7/8
1:3	1-633268	1	Grip-Lever	15	142-7765-03	1	Link-Brake Control Lock
2	3231-25	2	Bolt-Carriage 3/8-16 X 1 1/4	16	115-5065	2	Bushing-Flange
3	133-5109	2	Bearing-Sleeve	17	135-7867	2	Support, Bearing
4	142-7464	1	Link-Brake Upper	18	3230-29	4	Screw-Carriage 5/16-18 X 1 1/4
5	3256-4	2	Washer-3/8 Std	19	3231-7	2	Bolt-Carriage 3/8-16 X 2 1/4
6	142-7470-03	1	ASM-Brake Shaft [black]	20	142-7467	2	Spacer-.39 ldx1.0 Odx1.2 L
7	146-0245	1	Spacer-Pivot	21	142-9372	1	Link - Lower Brake
8	3230-8	1	Bolt-Carriage 5/16-18 X 2 1/2	22	3290-357	2	Nut-Whizlock 3/8-16
9	104-8301	3	Nut-Nyloc 3/8-16 Flg	23	126-2127	1	Spring-Extension
10	146-0570-03	1	Bracket-Brake Lever Supt	24	142-7468	2	Spacer-Brake Pivot
11	142-6746	1	Spacer-.31 X 1.25 Yz	25	61-1950	2	Washer-Plastic
12	104-8300	7	Nut-Nyloc 5/16-18 Flg	26	109-7124	1	Spring-Extension

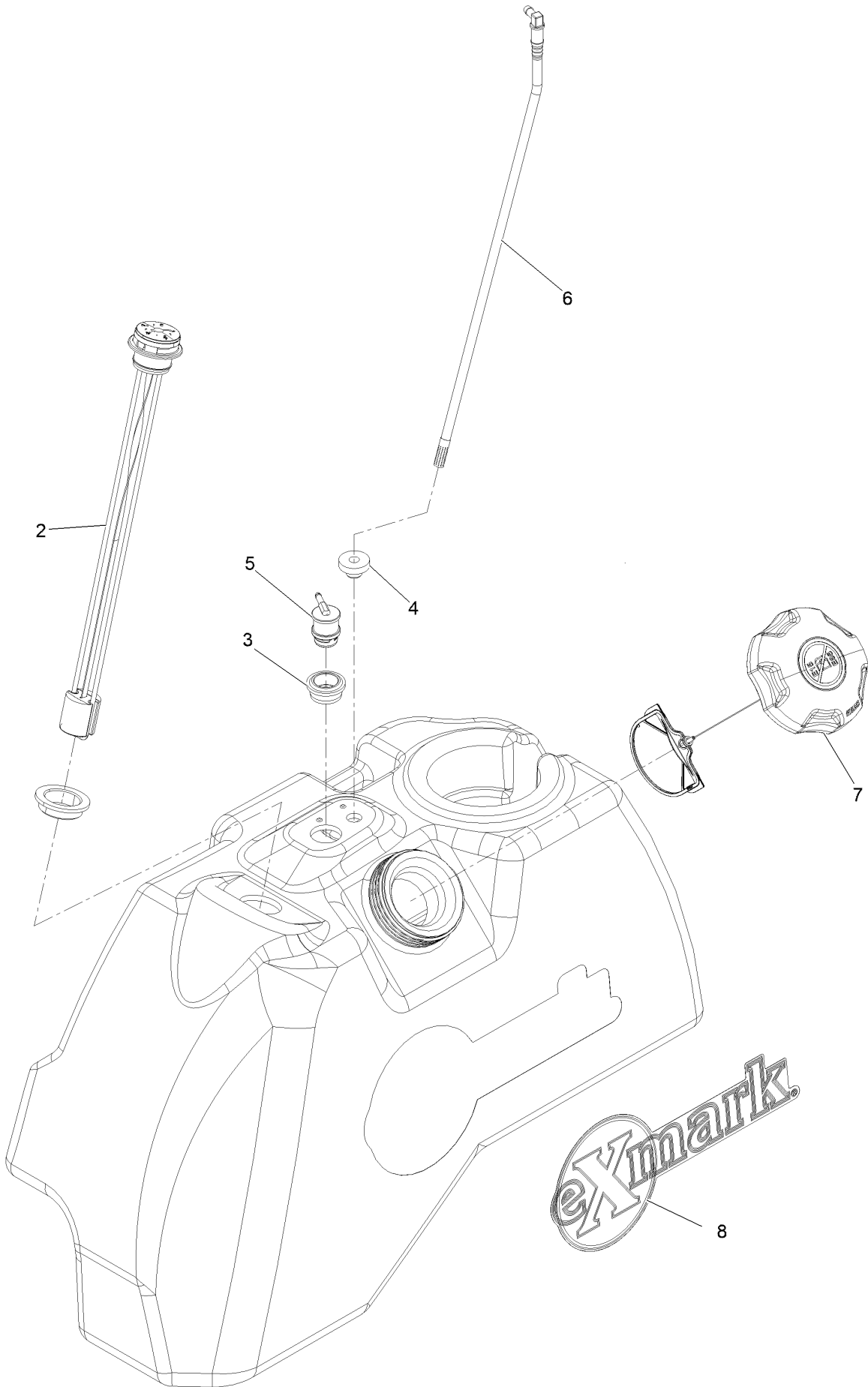
# Fuel Assembly



## Fuel Assembly (continued)

<i>Ref.</i>	<i>Part Number</i>	<i>Qty.</i>	<i>Description</i>	<i>Ref.</i>	<i>Part Number</i>	<i>Qty.</i>	<i>Description</i>
1	142-6113	1	ASM, Fuel Tank 8 Gal	9	3274-69	2	Screw-HSBH
2	109-0286	1	Hose-Fuel Line 35"	10	142-5959-03	1	Bracket, Fuel Tank
3	119-8153	3	Clamp-R, Double Tube	11	104-8301	4	Nut-HF, NI
4	2412-98	2	Clamp-Hose	12	3234-1	4	Screw-HHF
5	110-0471	1	Hose-Fuel	13	142-6275	3	Screw-HHF
6	107-4543	3	Clamp	14	3230-6	1	Bolt-CARR
7	104-8300	3	Nut-Nyloc 5/16-18 Flg	15	133-8062	1	Decal-Arrestor, Spark
8	32128-33	2	Nut-HF	17	32180-030	4	Clip-Tie

# Fuel Tank Assembly

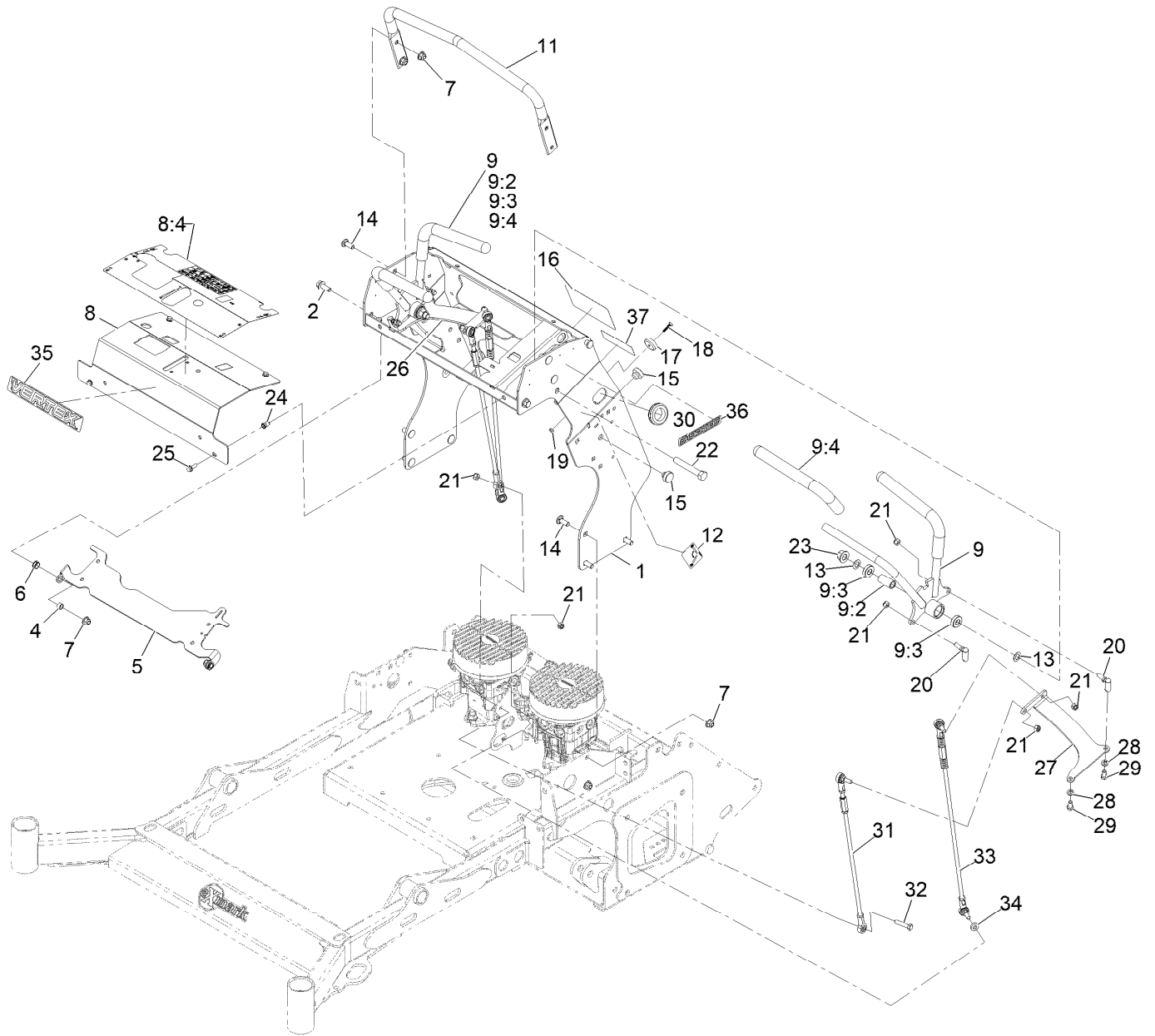


## Fuel Tank Assembly (continued)

<i>Ref.</i>	<i>Part Number</i>	<i>Qty.</i>	<i>Description</i>	<i>Ref.</i>	<i>Part Number</i>	<i>Qty.</i>	<i>Description</i>
2	142-8013	1	ASM-Fuel Gauge	7	137-4119	1	Cap-Fuel, Ratcheting
3	114-0284	1	Grommet	8	142-6800	1	Decal-Exmark Logo Fuel
4	46-6560	1	Bushing	99	135-3694	1	Kit-Fuel Gauge Replacement ●
5	119-3547	1	Valve-Vent, Fuel				
6	132-9905	1	Pipe-Stand				

● Not illustrated

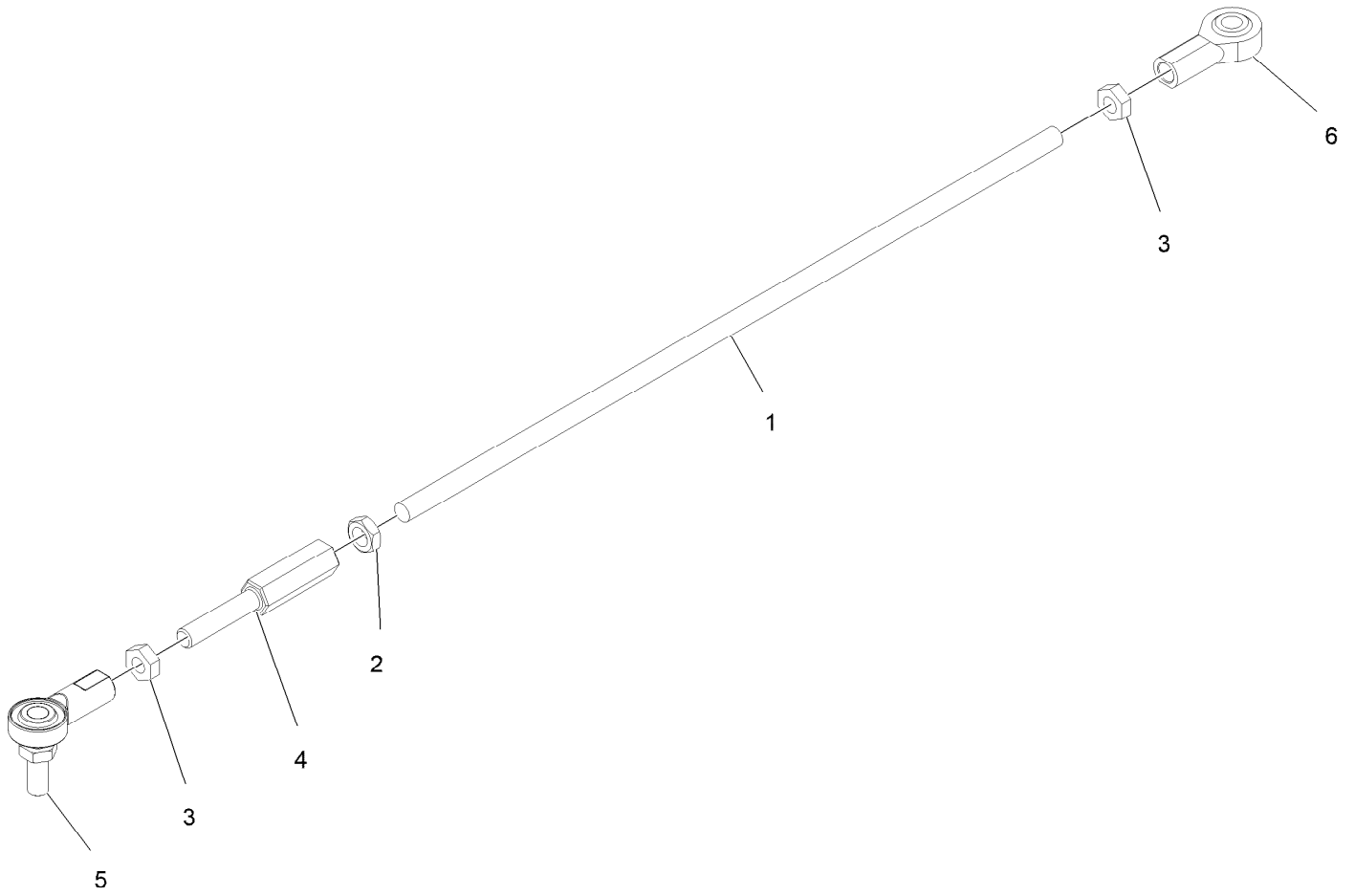
# Controls and Tower Assembly



## Controls and Tower Assembly (continued)

<i>Ref.</i>	<i>Part Number</i>	<i>Qty.</i>	<i>Description</i>	<i>Ref.</i>	<i>Part Number</i>	<i>Qty.</i>	<i>Description</i>
1	142-6031-01	1	ASM-Tower [red]	18	142-7830	2	Screw Flat HD #10-24X1.00
2	3234-42	2	Screw HHF 3/8-16 X 1	19	110-3145	2	Nut-Lock #10-24
4	142-7468	2	Spacer-Brake Pivot	20	2411-33	4	Balljoint-RH (W/Grommet)
5	142-7749-03	1	Plate-Motion Cntrl Lock	21	3296-4	11	Nut-Lock 5/16-24
6	116-1393	2	Bushing	22	325-13	2	Screw-HH 1/2-13 X 3 1/4
7	104-8301	12	Nut-Nyloc 3/8-16 Flg	23	99-5107	2	Nut-Lock 1/2-13
8	142-6438	1	Panel-Control W/ Decal	24	138-2760	4	Nut-Clinch, Hex
8:4	146-0287	1	Decal-Control Panel Non-EFI	25	119-1138	4	Screw-HHF
9	142-6057	2	ASM-Ctrl Lever	26	142-6017-03	1	Bracket-Link Ctrl LH
9:2	142-6579	1	Spacer	27	142-6018-03	1	Bracket-Link Ctrl RH
9:3	52-2450	2	Bearing-Ball	28	3253-4	4	Washer-Lock 5/16
9:4	116-2357	2	Grip-Handle, Control	29	3210-3	4	Screw-HH 5/16-24 X 3/4
11	142-6067-03	1	Bar-Reference	30	108-3723	1	Grommet
12	116-5988	1	Decal-Park Brake, CE	31	142-8611	2	ASM-Motion Control Short
13	98-1629	4	Washer	32	3210-8	1	Screw-HH 5/16-24 X 1 1/2
14	3231-22	10	Bolt-Carriage 3/8-16 X 1	33	142-7545	2	ASM-Motion Control Long
15	104-1412	5	Bumper-Rubber	34	142-7724	2	Spacer
16	142-7432	1	Decal-Service Aid	35	142-8185	1	Decal-Vertex Logo
17	142-7895	2	Magnet-Rare Earth Thigh Pad	36	126-6998	2	Decal-S-Series
				37	142-8303	1	Decal-Fuse

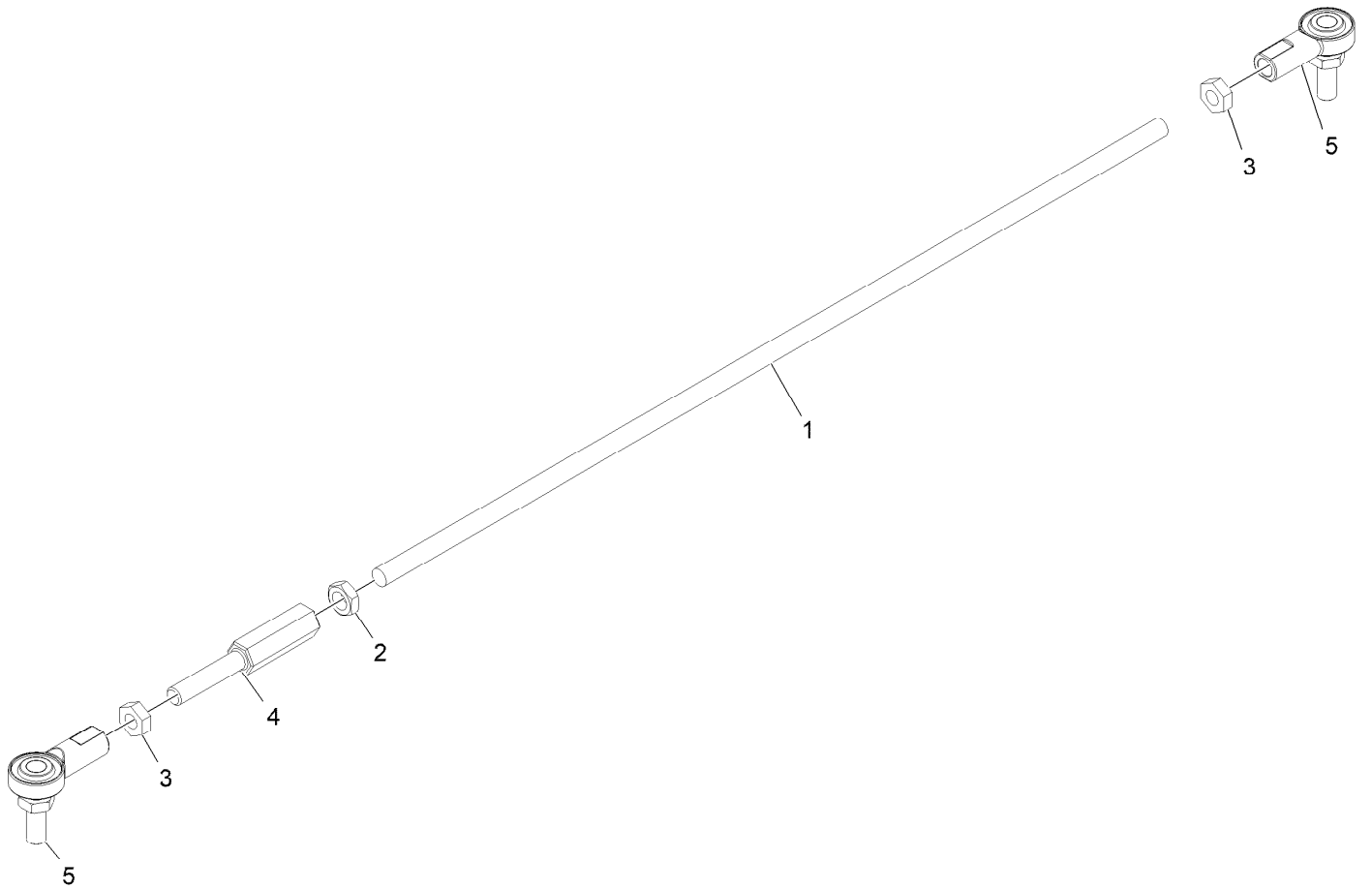
# Motion Control Assembly (Short)



## Motion Control Assembly (Short) (continued)

<i>Ref.</i>	<i>Part Number</i>	<i>Qty.</i>	<i>Description</i>	<i>Ref.</i>	<i>Part Number</i>	<i>Qty.</i>	<i>Description</i>
1	142-8610	1	Rod-Motion Control Short	4	142-7543	1	Rod-Adjust
2	3220-20	1	Nut-Jam 5/16-24 LH	5	1-513132	1	Joint, Ball
3	3220-2	2	Nut-Jam 5/16-24	6	1-543017	1	Balljoint

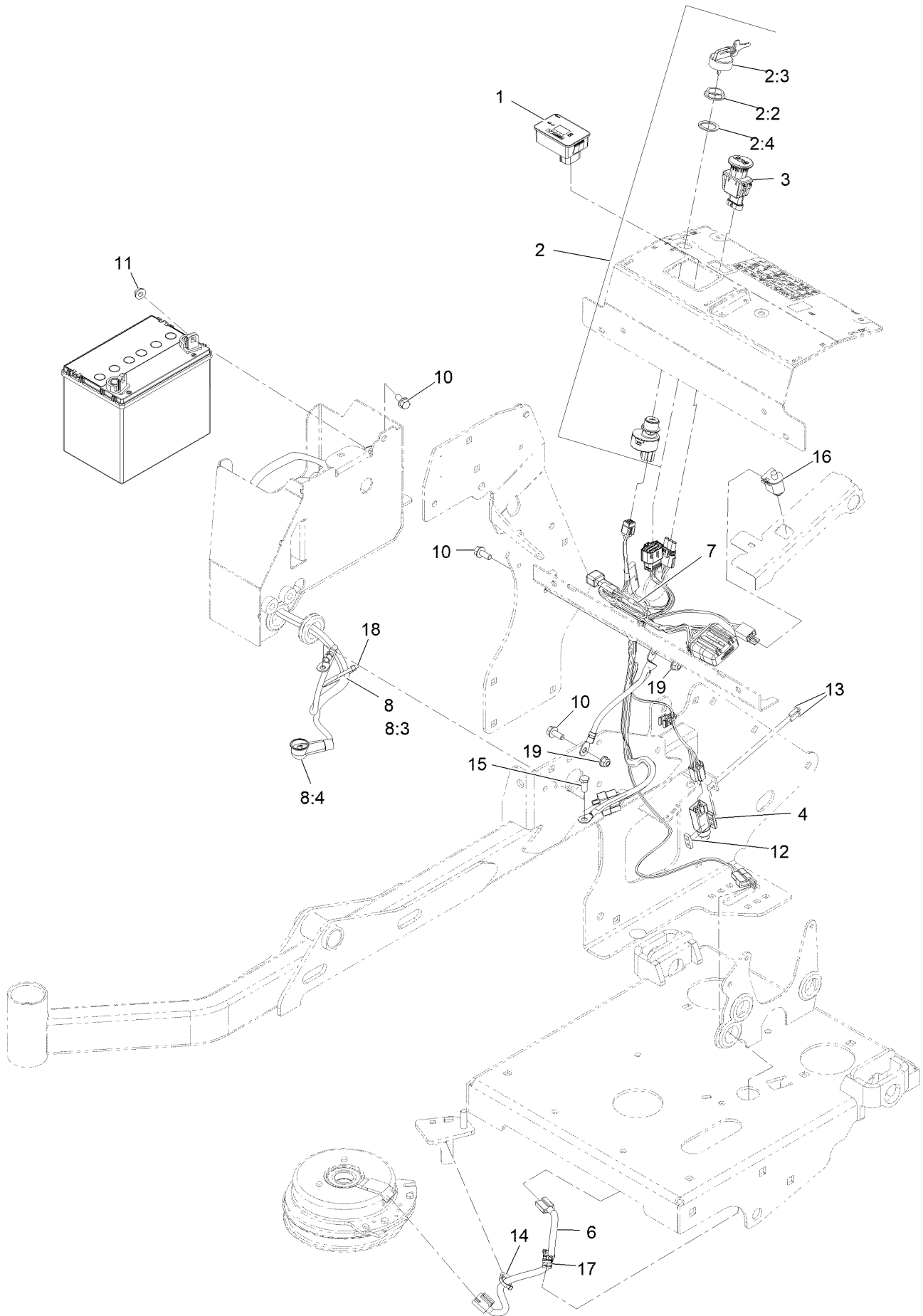
# Motion Control Assembly (Long)



## Motion Control Assembly (Long) (continued)

<i>Ref.</i>	<i>Part Number</i>	<i>Qty.</i>	<i>Description</i>	<i>Ref.</i>	<i>Part Number</i>	<i>Qty.</i>	<i>Description</i>
1	142-7544	1	Rod-Motion Control Long	4	142-7543	1	Rod-Adjust
2	3220-20	1	Nut-Jam 5/16-24 LH	5	1-513132	2	Joint, Ball
3	3220-2	2	Nut-Jam 5/16-24				

# Electrical Assembly

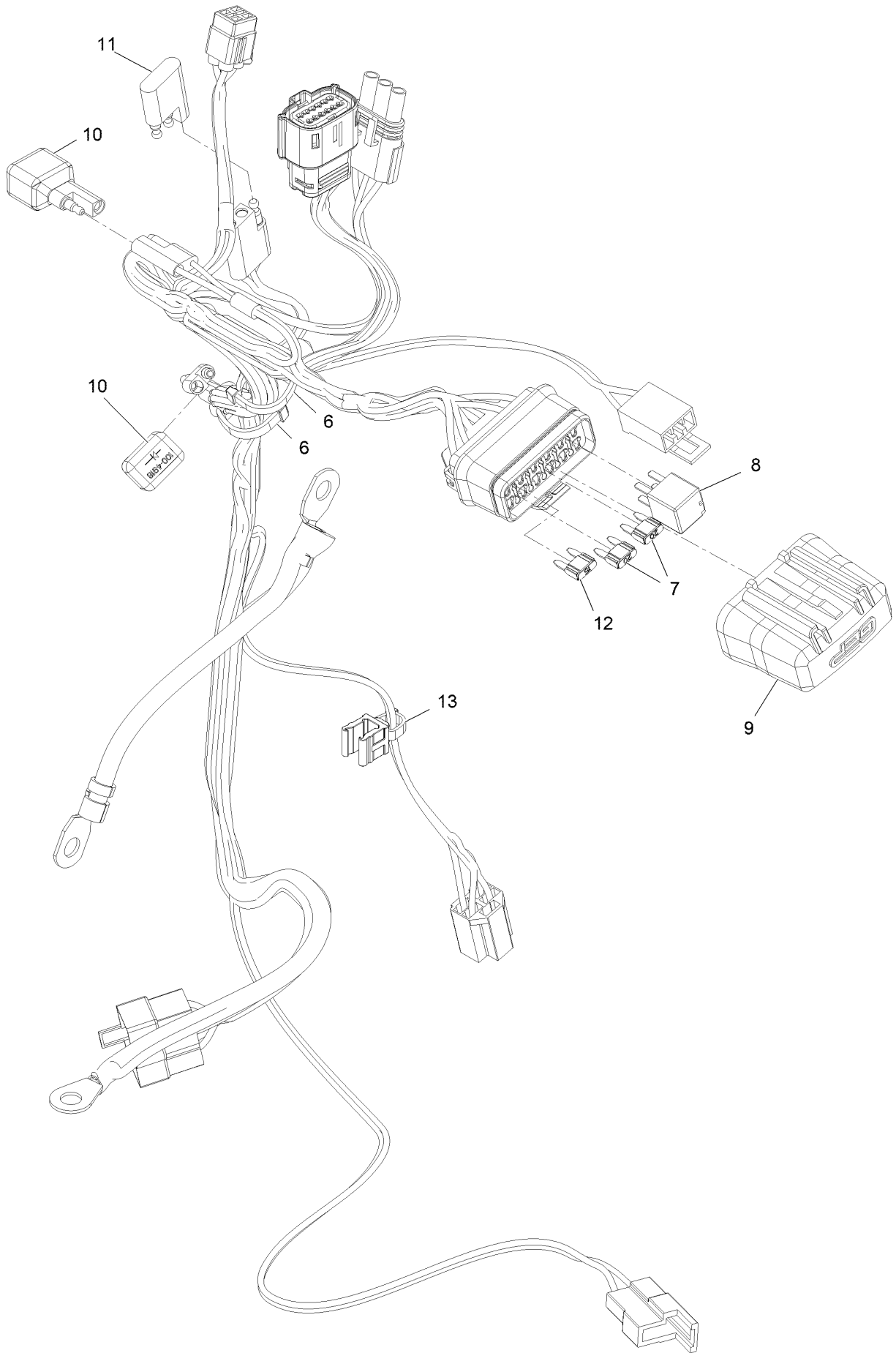


## Electrical Assembly (continued)

<i>Ref.</i>	<i>Part Number</i>	<i>Qty.</i>	<i>Description</i>	<i>Ref.</i>	<i>Part Number</i>	<i>Qty.</i>	<i>Description</i>
1	142-7401	1	Module-Hour Meter	8:4	AU21001545	1	Boot-Battery, Red
2	126-6285	1	Ignition Switch ASM	10	3234-5	4	Screw-HH Flg 5/16-18 X 3/4
2:2	108-8660	1	Nut-Mounting	11	32128-20	2	Nut-Whizlock 5/16-18
2:3	106-5270	1	Ignition Key Set	12	1-633181	1	Plate-Tapped
2:4	108-8659	1	Washer-Backup	13	3290-500	2	Screw-PPH #10-24 X 5/8
3	126-6187	1	Switch-PTO, Sealed	14	32180-030	1	Clip-Tie
4	99-7407	1	Switch	15	33114-020	1	Screw-HH M8-1.25 X 20Mm
6	126-0624	1	Harness-Clutch Pigtail	16	82-2190	1	Switch
7	142-6462	1	Harness-Wiring ●	17	32180-078	1	Clip-Edge
8	142-6765	1	Harness-Battery	18	3290-378	1	Tie-Cable
8:3	32180-008	1	Insulator-Lug, Red	19	104-8300	2	Nut-Nyloc 5/16-18 Flg

● Use dielectric grease on all unsealed connectors and terminals only. Do not apply in sealed connectors.

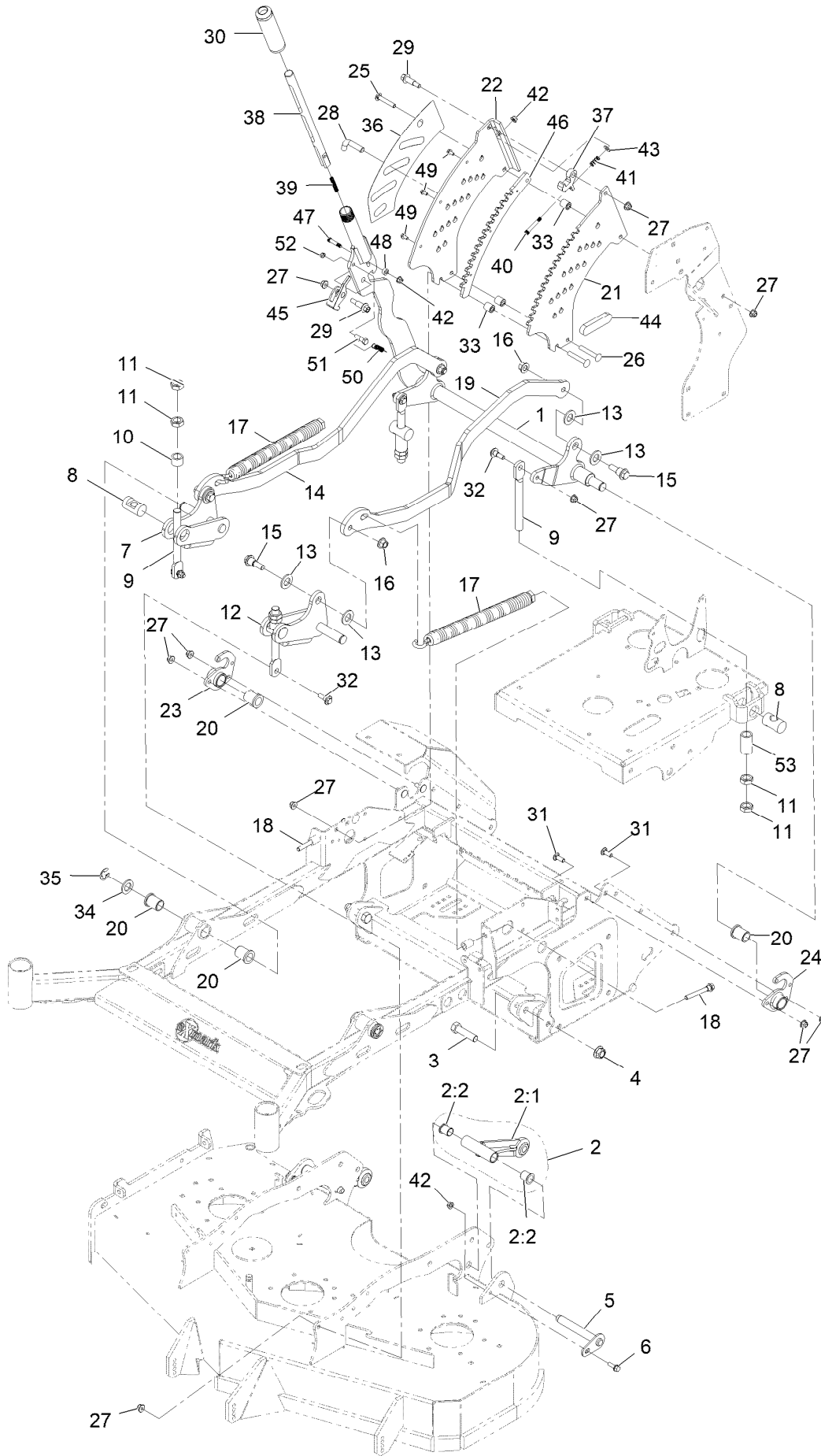
# Harness Assembly



## Harness Assembly (continued)

<i>Ref.</i>	<i>Part Number</i>	<i>Qty.</i>	<i>Description</i>	<i>Ref.</i>	<i>Part Number</i>	<i>Qty.</i>	<i>Description</i>
6	32180-030	2	Clip-Tie	11	32180-197	1	Cap-Plug
7	121-8868	2	Fuse-Mini Blade, 20 Amp	12	121-8867	1	Fuse-Mini Blade, 15 Amp
8	126-3991	1	Relay-Micro	13	32180-082	1	Clip-Edge W/Tie, Perpendicular
9	32180-176	1	Cover-Block, Fuse				
10	100-4918	2	Diode				

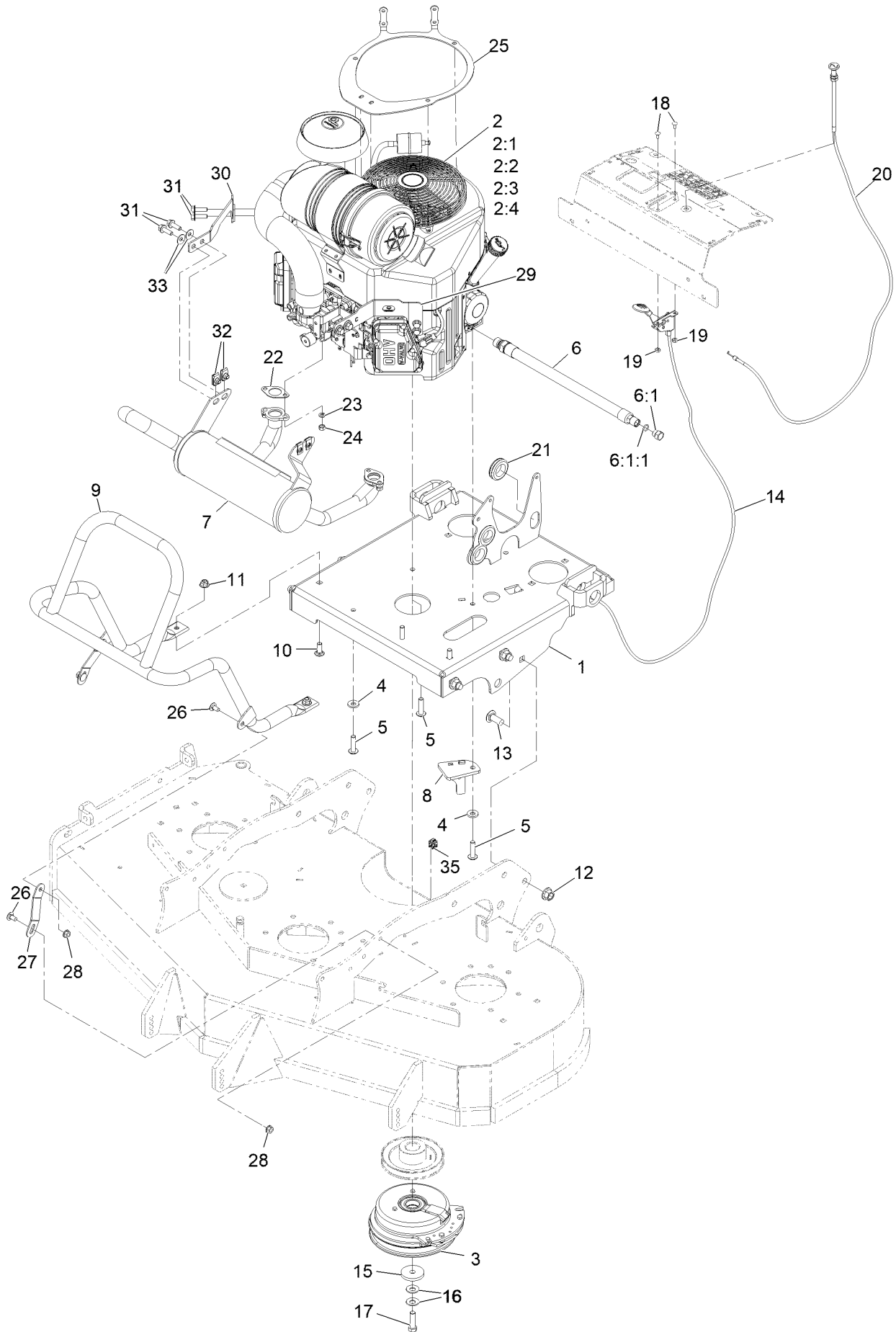
# Deck Lift Assembly



## Deck Lift Assembly (continued)

<i>Ref.</i>	<i>Part Number</i>	<i>Qty.</i>	<i>Description</i>	<i>Ref.</i>	<i>Part Number</i>	<i>Qty.</i>	<i>Description</i>
1	146-0906-03	1	Cross Shaft-Decklift-Rear [black]	26	3231-44	2	Bolt-Carriage 3/8-16 X 2 1/2
2	142-5096	2	ASM-Deck Strut W/Bushings	27	104-8301	13	Nut-Nyloc 3/8-16 Flg
2:1	142-9276	1	ASM-Deck Strut	28	116-5584	1	Pin-HOC
2:2	142-5095	2	Bushing-Igus Flng .75X1	29	62-1330	2	Bolt-Shoulder
3	121-2111	2	Screw-HH 5/8-18 X 2 1/2 Gr5	30	142-6679-03	1	Grip-Handle-Decklift
4	142-8396	2	Nut-Flng 5/8-18 Ctrlock GR G	31	3231-22	4	Bolt-Carriage 3/8-16 X 1
5	142-6519	2	ASM-Deck Strut Pin	32	109-9840	4	Screw-Hex Flange 3/8-16 X .80
6	3234-29	2	Screw-HH Flg 5/16-18 X 1	33	142-6720	3	Spacer-HOC
7	142-7944-03	1	Weld-Arm-Decklift-Front-RH	34	103-0357	2	Washer
8	142-7939	4	Trunion-Deck Lift	35	32151-103	2	E-Ring
9	142-9163	4	Link,Deck Lift Adjuster	36	142-6805	1	Decal-Height Of Cut
10	142-7940	2	Spacer-Decklift	37	142-7290	1	Pawl-Decklift
11	3220-7	8	Nut-Jam 3/4-16	38	142-6524	1	Plunger-Top
12	142-7945-03	1	Weld-Arm-Decklift-Front-LH	39	142-7365	1	Spring-Compression
13	3256-28	8	Washer-3/4 SAE	40	142-7437	1	Screw-Shoulder-Cap
14	142-8670-03	1	Link-Decklift-RH	41	117-1031	1	Spring-Compression
15	116-0780	4	Screw-Shoulder HHF 1/2-13 X 1.12	42	104-8300	4	Nut-Nyloc 5/16-18 Flg
16	99-5107	4	Nut-Lock 1/2-13	43	107-0279	1	Washer
17	116-0886	2	Spring-Extension	44	142-7963	1	Plate-Guide HOC Inner
18	92-7674	2	Screw-SHCS 3/8-16 X 2.212	45	142-8673	1	Pawl-Lock-Decklift
19	142-8671-03	1	Link-Decklift-LH	46	142-9151	1	Plate-Doubler-HOC-Lock
20	142-4794	6	Bushing-Flanged	47	142-8707	1	Screw-Shoulder-Cap
21	142-9150	1	Plate-Inner-HOC	48	107-3237	1	Spacer
22	142-8589-03	1	Plate-Outer-HOC	49	119-1065	3	Screw-HWH
23	146-0972	1	Support-HOC Shaft RH	50	110-9458	1	Spring-Extension
24	146-0971	1	Support-HOC Shaft LH	51	121-6991	1	Bolt-Shoulder
25	3231-40	1	Bolt-Carriage 3/8-16 X 2 1/4	52	3296-47	1	Nut-Nyloc 5/16-18 Thin
				53	142-8897	2	Spacer 1.13 O.D. X .81 I.D. X 2.05L

# Engine Assembly



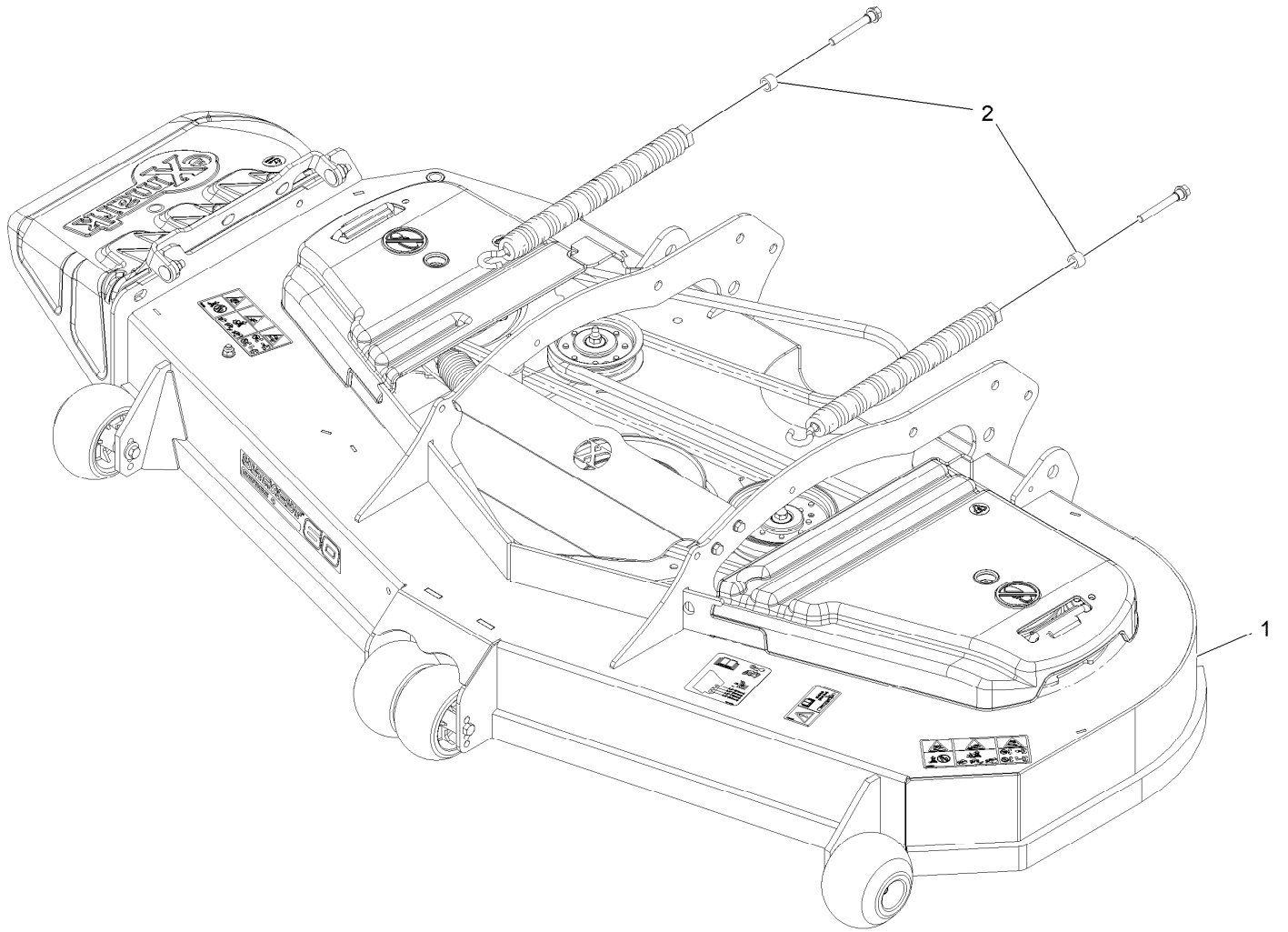
## Engine Assembly (continued)

<i>Ref.</i>	<i>Part Number</i>	<i>Qty.</i>	<i>Description</i>	<i>Ref.</i>	<i>Part Number</i>	<i>Qty.</i>	<i>Description</i>
1	142-8814-01	1	Wld-Engine Deck	14	116-4919	1	Control,Throttle
2		1	Engine-Kawasaki, Fx730V ■▲	15	109-6919	1	Washer-Clutch
2:1		1	Kawasaki 49065-7007 Engine Oil Filter ■▲	16	1-603610	2	Washer-Spring Disc 7/16
2:2		1	Kawasaki 49019-7005 Fuel Filter ■▲	17	109-9761	1	Screw-HH 7/16-20 X 1 1/2 W/Loctite
2:3		1	Kawasaki 11013-7045 Safety Filter ■▲	18	1-807513	2	Bolt-Carriage #10-24 X 1/2
2:4		1	Kawasaki 11013-7044 Engine Air Filter ■▲	19	3296-2	2	Nut-Nyloc #10-24
3	116-1604	1	Clutch	20	135-5707	1	Cable-Choke
4	98-5975	3	Washer-Spring Disc 3/8	21	108-3723	3	Grommet
5	126-0983	4	Screw-BHTF	22	1-653313	2	Gasket-Exhaust
6	116-5052	1	Asm-Oil Drain Hose W/Plug	23	114-3550	4	Washer-Spring Lock M8
6:1	353-508	1	Plug-W/O-Ring ●	24	114-3549	4	Nut-M8
6:1:1	237-42	1	O-Ring	25	142-8521-03	1	Bracket- Engine Filter
7	142-6574	1	Muffler-Kawasaki [726Cc]	26	3230-18	4	Bolt-Carriage 5/16-18 X 5/8
8	142-6567	1	ASM-Clutch Anchor	27	142-7748-03	2	Strap, Muffler Guard
9	142-6783-03	1	Tube-Guard Muffler	28	32128-25	4	Nut-Hex 5/16-18 Side Lock
10	3231-22	2	Bolt-Carriage 3/8-16 X 1	29	132-1173	1	Bracket-Muffler, Front
11	104-8301	2	Nut-Nyloc 3/8-16 Flg	30	132-1174	1	Bracket-Muffler, Rear
12	99-5107	6	Nut-Lock 1/2-13	31	33104-025	8	Screw HH M8-1.25 X 25Mm
13	3233-26	6	Screw-CARR,Shortneck	32	142-9904	4	Nut-U
				33	3290-456	4	Washer-Spring Disc
				35	32180-082	1	Clip-Edge W/Tie, Perpendicular

● Torque to 20-24 ft-lb  
▲ Obtain parts from [www.kawpower.com](http://www.kawpower.com)

■ Not serviced separately

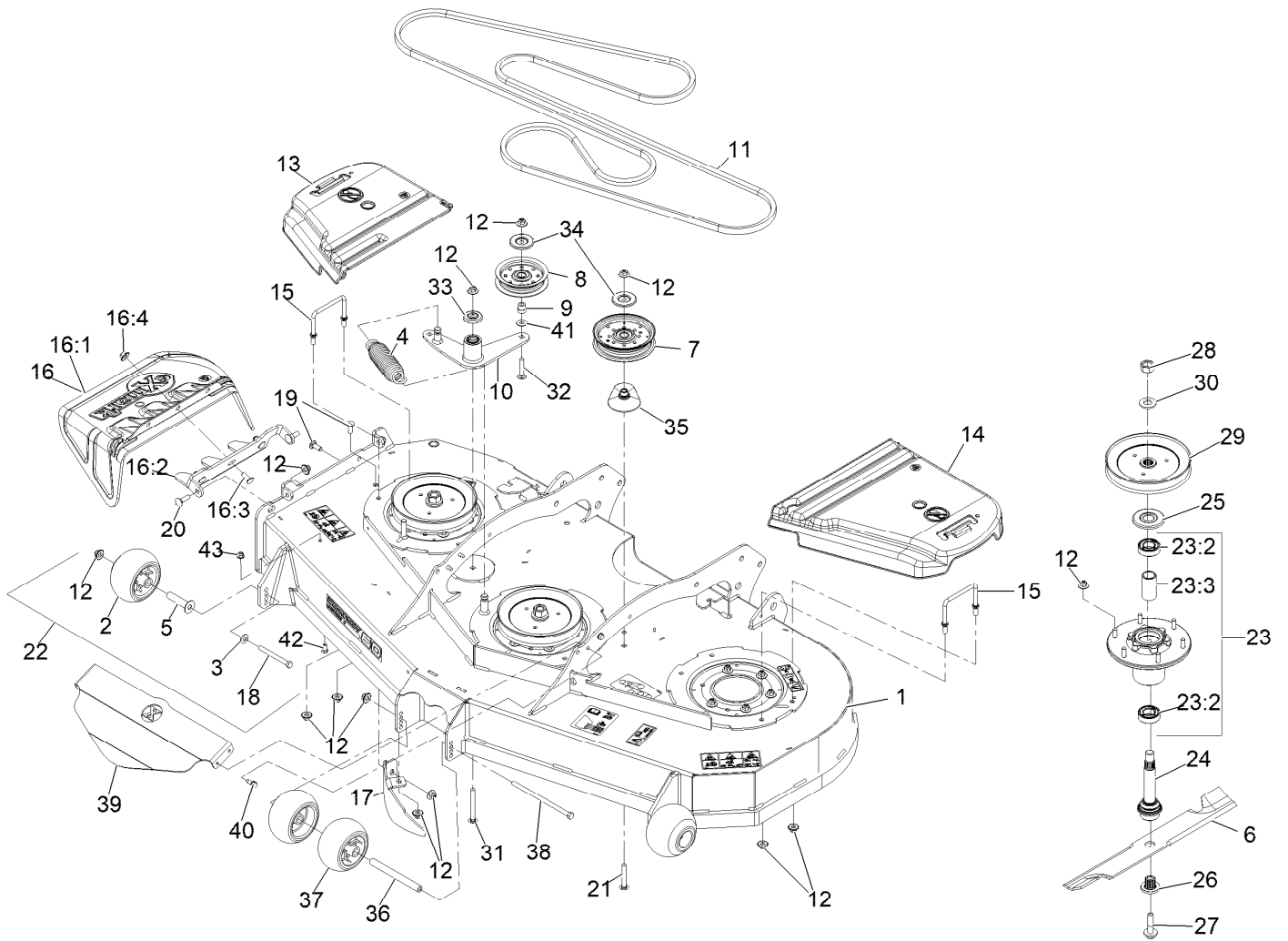
# Complete Deck Assembly



## Complete Deck Assembly (continued)

<i>Ref.</i>	<i>Part Number</i>	<i>Qty.</i>	<i>Description</i>
1	142-8066	1	ASM-Deck Complete 604
2	104-5825	2	Spacer-Clevis

# Deck Assembly



## Deck Assembly (continued)

<i>Ref.</i>	<i>Part Number</i>	<i>Qty.</i>	<i>Description</i>	<i>Ref.</i>	<i>Part Number</i>	<i>Qty.</i>	<i>Description</i>
1	142-5082	1	ASM-Deck W/Decals 604	21	3231-44	1	Bolt-Carriage 3/8-16 X 2 1/2
2	103-8415	2	Roller-Anti-Scalp	22	116-9981	2	Kit, Anti-Scalp Roller
3	98-5975	2	Washer-Spring Disc 3/8	23	116-3344	3	ASM-Cutter Hsg With Bearings
4	116-6317	1	Spring-Extension	23:2	116-0720	2	Bearing-Ball
5	116-8131	3	Axle, Roller	23:3	116-3312	1	Spacer-Bearing
6	116-5174	3	Blade-Extreme 2, 20.50" ●	24	116-3341	3	ASM-Spindle And Seal ◆
6	103-6403	3	Blade, Notched	25	116-1286	3	Guard,Bearing Top .989
6	103-6393	3	Blade, Mulching ▲	26	103-3037	3	Bushing, Splined
6	103-6388	3	Blade, Low Lift ●	27	109-9220	3	Screw-Sems 1/2-20 X 2.19 ■ □
6	103-6383	3	Blade, Solid ●	28	116-7306	3	Nut-Hex 3/4-16 W/Patch
7	126-9187	1	Pulley-Idler, Flat	29	116-0676	3	Sheave,Blade Drive 7.25
8	116-3626	1	Pulley-Idler	30	103-2802	3	Washer-Spring Disc 3/4
9	1-513791	1	Bushing	31	3231-11	1	Bolt-Carriage 3/8-16 X 3 1/2
10	116-3806	1	Idler Arm ASM W/Bearings	32	3231-6	1	Bolt-Carriage 3/8-16 X 2
11	114-8154	1	Belt-V	33	103-2916	1	Guard-Top
12	109-6658	32	Nut-Nyloc 3/8-16 Flg	34	126-8043	2	Shield-Dust
13	116-0094	1	Cover-Belt, RH	35	109-2872	1	Spacer-Pulley
14	109-6938	1	Cover-Belt, LH	36	98-5967	1	Spacer-Wheel
15	109-6982	2	Wireform-Cover	37	1-603299	2	Roller-Scalp, Anti
16	109-7188	1	ASM,Discharge Chute	38	108-5388	1	Screw-HH 3/8-16 X 7 3/8
16:1	109-2738	1	Chute, Discharge	39	142-6764-01	1	Guard-Front Deck
16:2	109-8675-01	1	Bracket,Discharge Chute	40	32144-11	4	Screw-HWH 5/16-18 X 3/4 Tf
16:3	3231-22	3	Bolt-Carriage 3/8-16 X 1	41	3256-4	1	Washer-3/8 Std
16:4	109-6658	3	Nut-Nyloc 3/8-16 Flg	42	322-2	1	Screw-HH 5/16-18 X 5/8
17	116-5614-01	1	Dogleg - Lz60	43	104-8300	1	Nut-Nyloc 5/16-18 Flg
18	116-9362	2	Screw-HH 3/8-16 X 3 3/4 GR 8				
19	3231-22	2	Bolt-Carriage 3/8-16 X 1				
20	3231-25	2	Bolt-Carriage 3/8-16 X 1 1/4				

● Optional Equipment

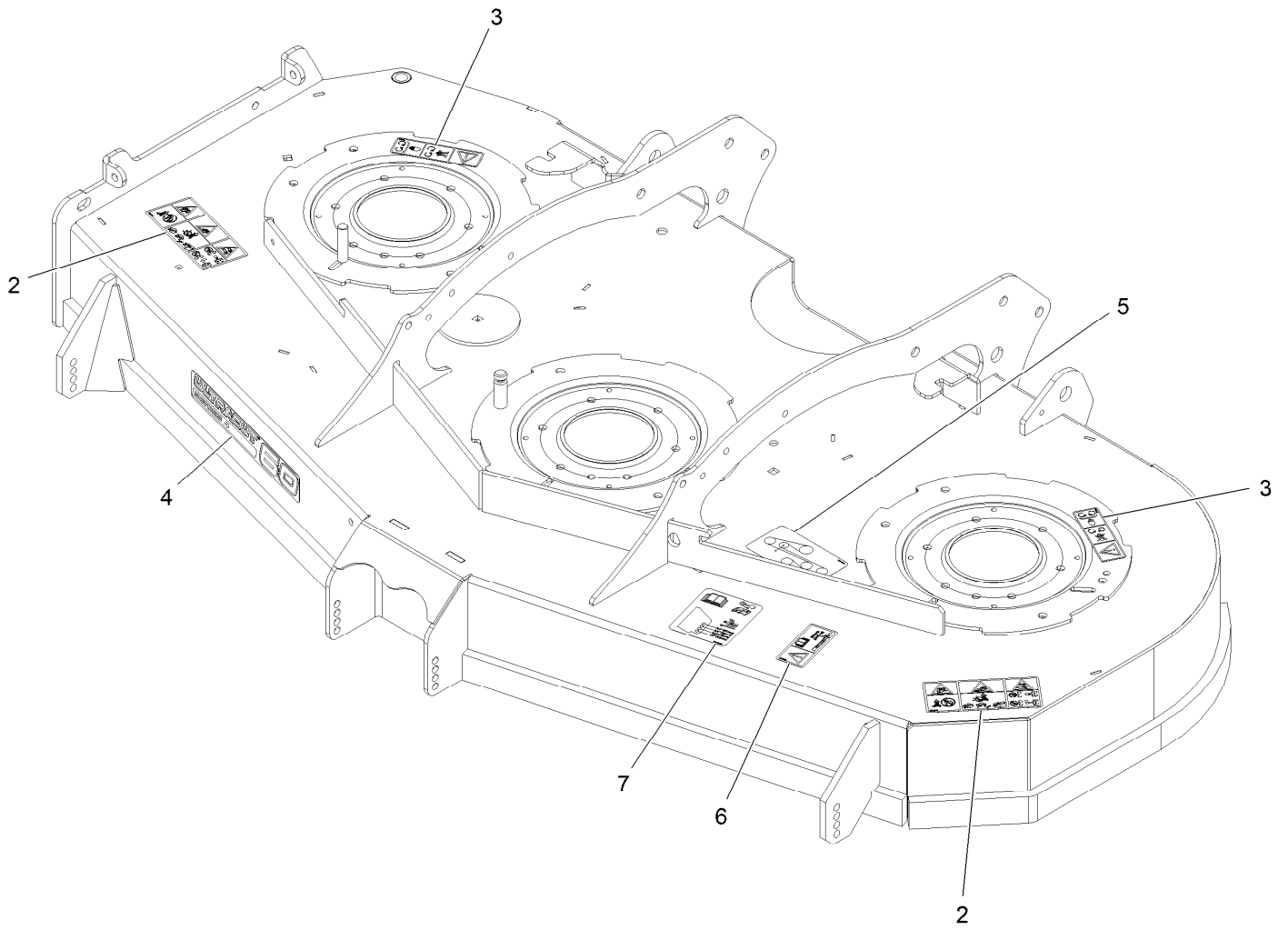
■ Torque to 50-60 ft-lb

▲ Requires installation of mulch kit for proper mulching. See your Exmark dealer for details.

◆ Apply Mobil HTS grease (P/N 103-5217 1.5 oz packet) (or a food-grade anti-seize) to spindle shaft

□ Apply lubricant to threads as needed to prevent seizing. Copper based anti-seize preferable. Grease is an acceptable substitute.

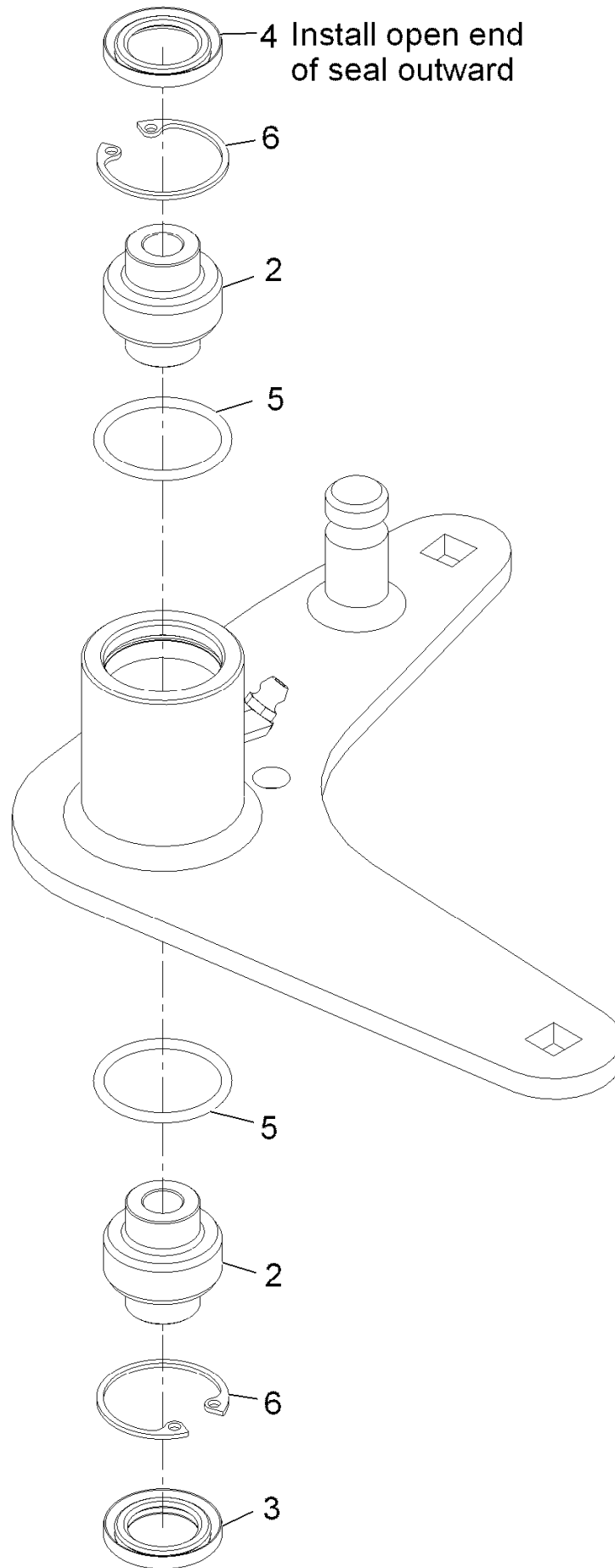
# Deck W/Decals Assembly



## Deck W/Decals Assembly (continued)

<i>Ref.</i>	<i>Part Number</i>	<i>Qty.</i>	<i>Description</i>	<i>Ref.</i>	<i>Part Number</i>	<i>Qty.</i>	<i>Description</i>
2	135-5210	2	Decal-Warning Thrown Obj	5	116-8774	1	Decal-Belt Routing
3	112-9028	2	Decal-Cover, Missing	6	116-8283	1	Decal-Torque, Bolt
4	126-6589	1	Decal, 604	7	109-6036	1	Decal-Roller, Anti-Scalp

# Idler Arm Assembly No. 116-3806

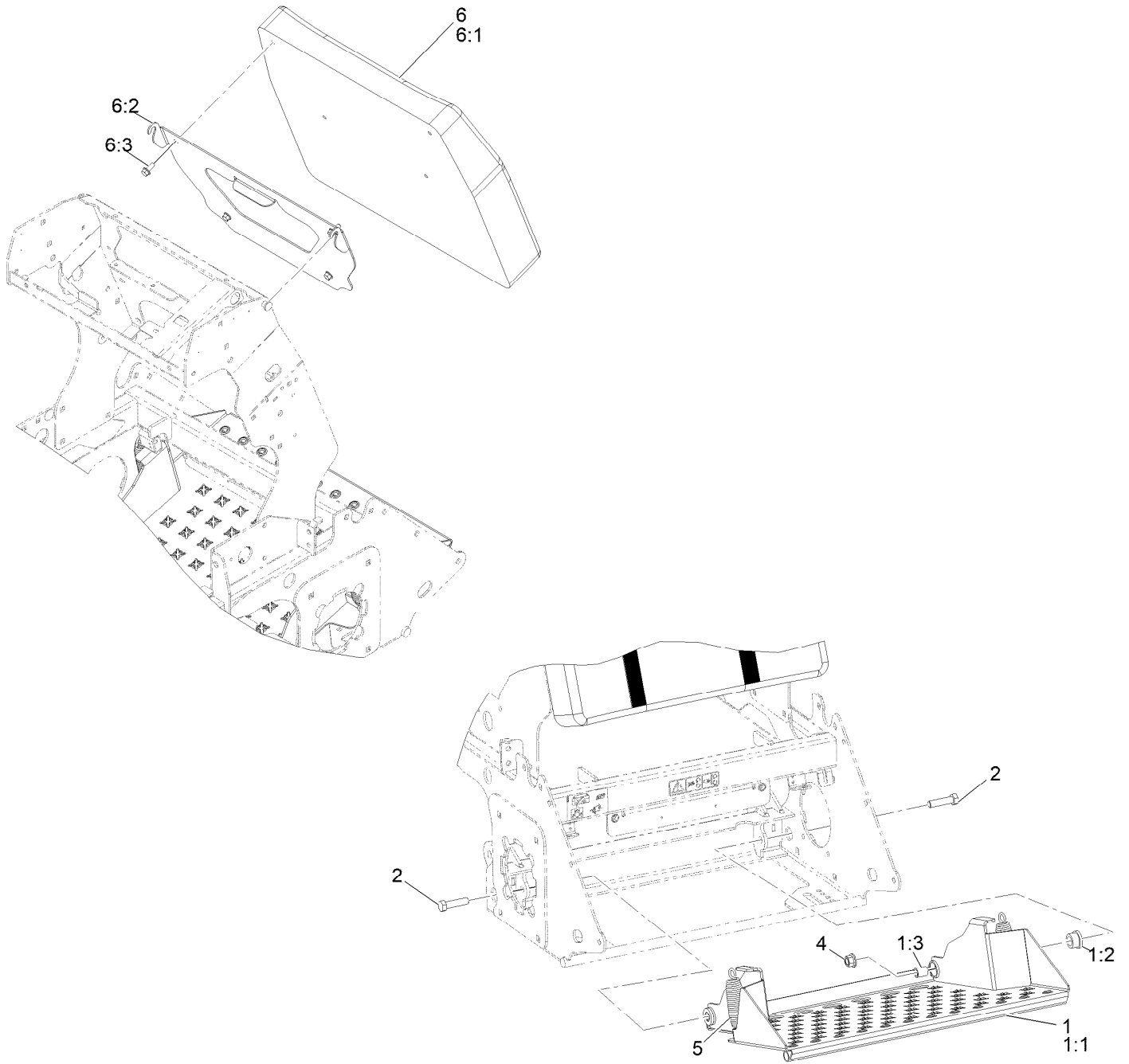


## Idler Arm Assembly No. 116-3806 (continued)

<i>Ref.</i>	<i>Part Number</i>	<i>Qty.</i>	<i>Description</i>
2	103-3504	2	Bearing-Spherical
3	103-3505	1	Seal-Lip, Double
4	103-3506	1	Seal-Single Lip

<i>Ref.</i>	<i>Part Number</i>	<i>Qty.</i>	<i>Description</i>
5	106-7159	2	O-Ring
6	32120-10	2	Ring-Retaining

# Platform and Pad Assembly



## Platform and Pad Assembly (continued)

<i>Ref.</i>	<i>Part Number</i>	<i>Qty.</i>	<i>Description</i>	<i>Ref.</i>	<i>Part Number</i>	<i>Qty.</i>	<i>Description</i>
1	142-8866	1	ASM-Operators Platform	4	99-5107	2	Nut-Lock 1/2-13
1:1	142-8852-03	1	ASM-Operator Platform [black]	5	116-6316	2	Spring-Extension
1:2	142-6033	2	Bushing-Rubber	6	142-6003	1	ASM-Thigh Pad
1:3	142-6034	2	Spacer	6:1	142-6002	1	Pad-Thigh
2	325-8	2	Screw-HH 1/2-13 X 1 1/4	6:2	142-7710-01	1	Plate-Hinge-Thigh Pad
				6:3	3234-5	4	Screw-HH Flg 5/16-18 X 3/4

**Notes:**

**Notes:**

**Notes:**



# MAXIMIZE THE PERFORMANCE OF YOUR EXMARK MACHINE.



## EXMARK® PREMIUM ENGINE OIL

Exmark now offers a family of engine oil viscosities to perform well in any environment. Each viscosity has the same synthetic formulation to give you what you need in punishing conditions. We designed each grade to the highest quality, making it ideal even for diesel applications. Coupled with Exmark Premium Fuel Treatment, we have the performance products to make your machine hum.

### EXMARK PREMIUM ENGINE OIL SAE 30/10W-30

- Meets zero shear requirements of a straight grade SAE 30 as well as the cold temp properties of a 10W-30.
- Most versatile oil in the industry.
- Superior corrosion protection over conventional oil - even in corrosive, humid environments.

### EXMARK PREMIUM ENGINE OIL SAE 20W-50

- Perfect for your big block engine, or any application in severe service.
- Same full synthetic formulation as all other Exmark Premium viscosities.
- Also effective for use in severe service small block engines.

### EXMARK PREMIUM ENGINE OIL SAE 10W-50

- Full synthetic formulation gives you peak performance. Don't settle for less.
- Wide span multi-grade combines easy starting in cold weather with maximum protection in high temperature operation.
- Reduce friction & wear over standard mineral formulations.

### EXMARK PREMIUM ENGINE OIL SAE 0W-40

- The perfect choice for when the weather turns cold or unpredictable, and your Exmark UTV has to perform.
- Commercial quality for severe service.
- Advanced additive package helps prevent corrosion from long-term storage.

### EXMARK PREMIUM ENGINE OIL UTV FORMULATION

- 4-cycle high-temp formulation.
- Heavier viscosity, full synthetic, perfect for your UTV.

### EXMARK PREMIUM UTV EXTREME CONDITIONS GEAR OIL

- SAE 80W-90, designed to keep your UTV performing at its peak.
- Shear stable, hypoid gear lube.
- Includes a premium additive system to combat wear, oxidation, rust & corrosion.

*Available from your local Exmark dealer. Find your closest dealer at [exmark.com](http://exmark.com)*

## EXMARK ACCESSORIES AND OPTIONS\*

### MID-MOUNT RIDING ACCESSORIES AND OPTIONS

CUSTOM RIDE SEAT SUSPENSION SYSTEM	OPERATOR CONTROLLED DISCHARGE
FULL SUSPENSION SEAT	SUN SHADE
DECK LIFT ASSIST KIT	TRASH CONTAINER
HITCH KIT	TURF STRIPER
LIGHT KIT	ULTRA VAC COLLECTION SYSTEM
12V POWER PORT	ULTRA VAC QUICK DISPOSAL SYSTEM
MICRO-MULCH SYSTEM	

### OUT-FRONT RIDING ACCESSORIES AND OPTIONS

CUSTOM RIDE SEAT SUSPENSION SYSTEM	SNOW BLADE
DUAL-TAIL WHEEL	SNOWBLOWER
FLOOR PAN EXTENDER	SUN SHADE
HITCH KIT	TRASH CONTAINER
LIGHT KIT	ULTRA VAC COLLECTION SYSTEM
MICRO-MULCH SYSTEM	ULTRA VAC QUICK DISPOSAL SYSTEM
ROLL OVER PROTECTION SYSTEM (ROPS)	WEATHER CAB

### WALK-BEHIND ACCESSORIES AND OPTIONS

GRASS CATCHER	TURF STRIPER
MICRO-MULCH SYSTEM	STANDON

\*Some accessories and options not available for some models.

Place Model No. and Serial No.  
Label Here (Included in the Literature  
Pack) or Fill in Below

Model No. \_\_\_\_\_

Serial No. \_\_\_\_\_

Date Purchased \_\_\_\_\_

Engine Model No. and Spec. No. \_\_\_\_\_

Engine Serial No. (E/No) \_\_\_\_\_

© 2022 Exmark Mfg. Co., Inc.  
415 Industrial Row  
Beatrice, NE 68310  
All Rights Reserved

Part No. 4506-350 Rev. A  
(402) 223-6300  
Printed in the USA.

