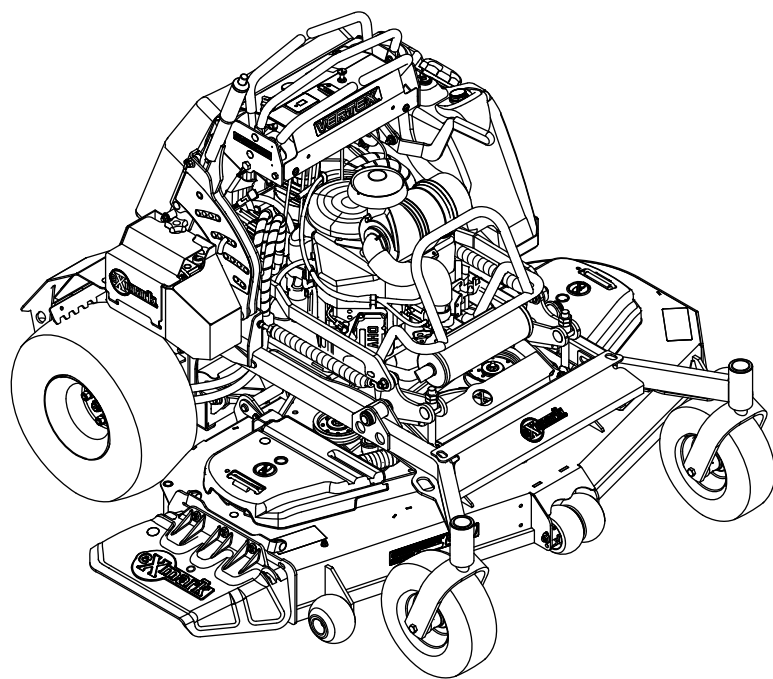




VERTEX® S-SERIES

Model No. VXS740AKC48400—Serial No. 413950474 and Up

Picture below may not reflect actual product.



Parts Manual

Part No. 4506-351 Rev. A

Ordering Replacement Parts

To order replacement parts, please supply the part number, the quantity, and the description of each part desired.

Understanding Reference Numbers

Each identified part in an illustration has a reference number. The reference number for a part also appears in the parts list, along with other information about the part.

This catalog uses two special reference number formats, one to indicate parts in a service assembly and another to indicate the quantity of a given part in an illustration.

Service Assembly Reference Numbers

Parts in service assemblies have reference numbers in the form a:b. The a represents the reference number of the entire service assembly and the b represents a sequential number unique to each part within the service assembly.

For example, a wheel assembly might be identified by reference number 6, the tire by 6:1, the valve by 6:2, and the wheel by 6:3. When you order the assembly identified by reference number 6, you receive all parts identified by reference numbers 6:1, 6:2, and 6:3. However, you may also order any part individually. Reference numbers of this type appear in illustration and in parts lists.

Reference Numbers Indicating Quantity

In an illustration, if a reference number indicates more than one part, the reference number has the form nX y. The n represents the quantity of the part, the X is the multiplication symbol, and the y represents the reference number.

For example, in an illustration, the reference number 2X 37 means that two of the parts identified by reference number 37 are indicated.

Touch Up Paint

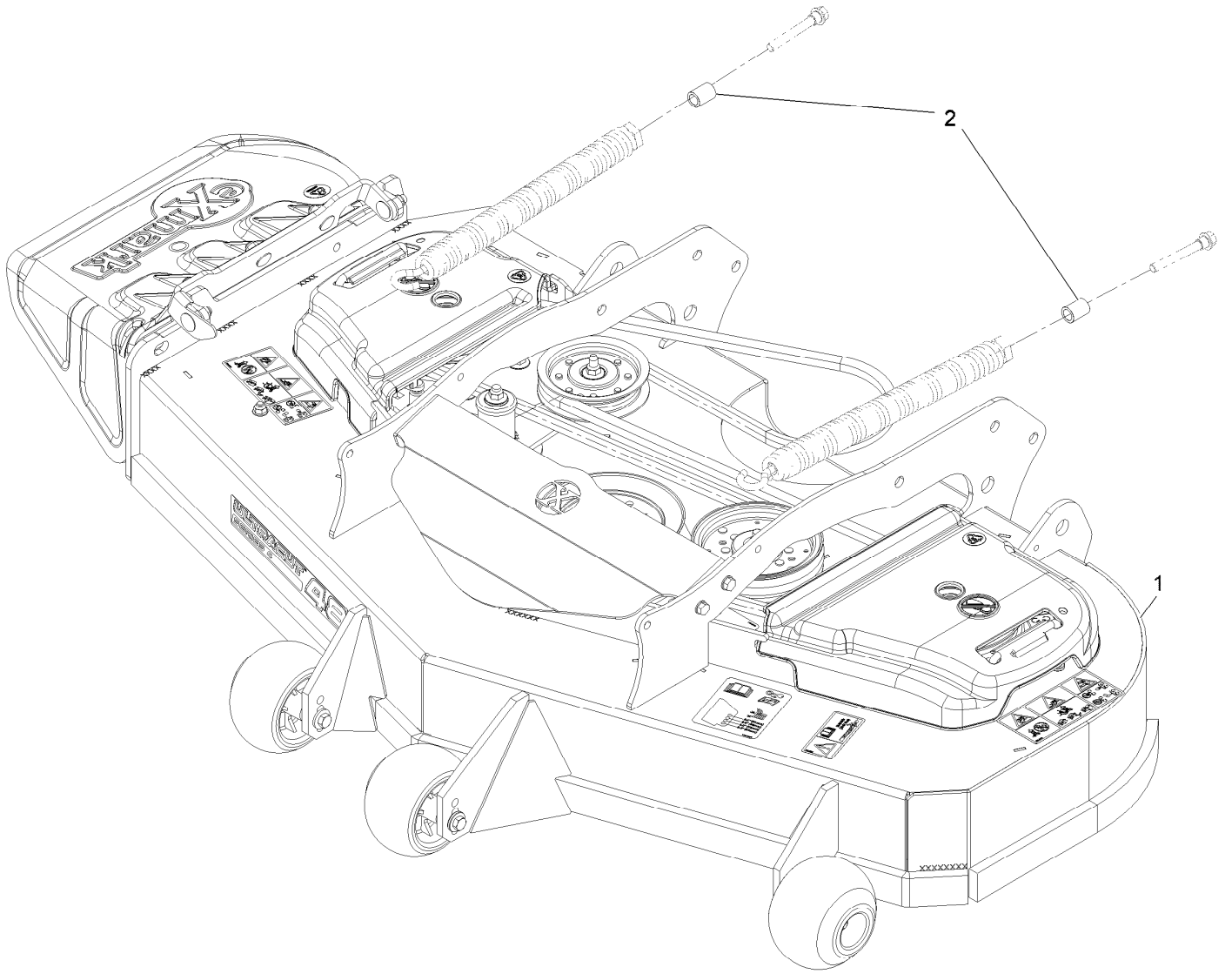
Exmark black touch up spray paint – gloss black.

Exmark red touch up paint (spray paint – P/N 1-850337 - .6 oz liquid bottle – P/N 103-9140).

Contents

Complete Deck Assembly	4
Deck Assembly	6
Deck W/Decals Assembly	8
Idler Arm Assembly No. 116-3806	10
Main Frame Assembly	12
Controls and Tower Assembly	14
Motion Control Assembly (Short)	16
Motion Control Assembly (Long)	18
Deck Lift Assembly	20
Platform and Pad Assembly	22
Front Caster and Fork Assembly	24
Caster Wheel and Fork Assembly	26
Rear Wheel Assembly	28
Park Brake Assembly	30
Fuel Assembly	32
Fuel Tank Assembly	34
Engine Assembly	36
Hydraulic Assembly	38
Electrical Assembly	40
Harness Assembly	42

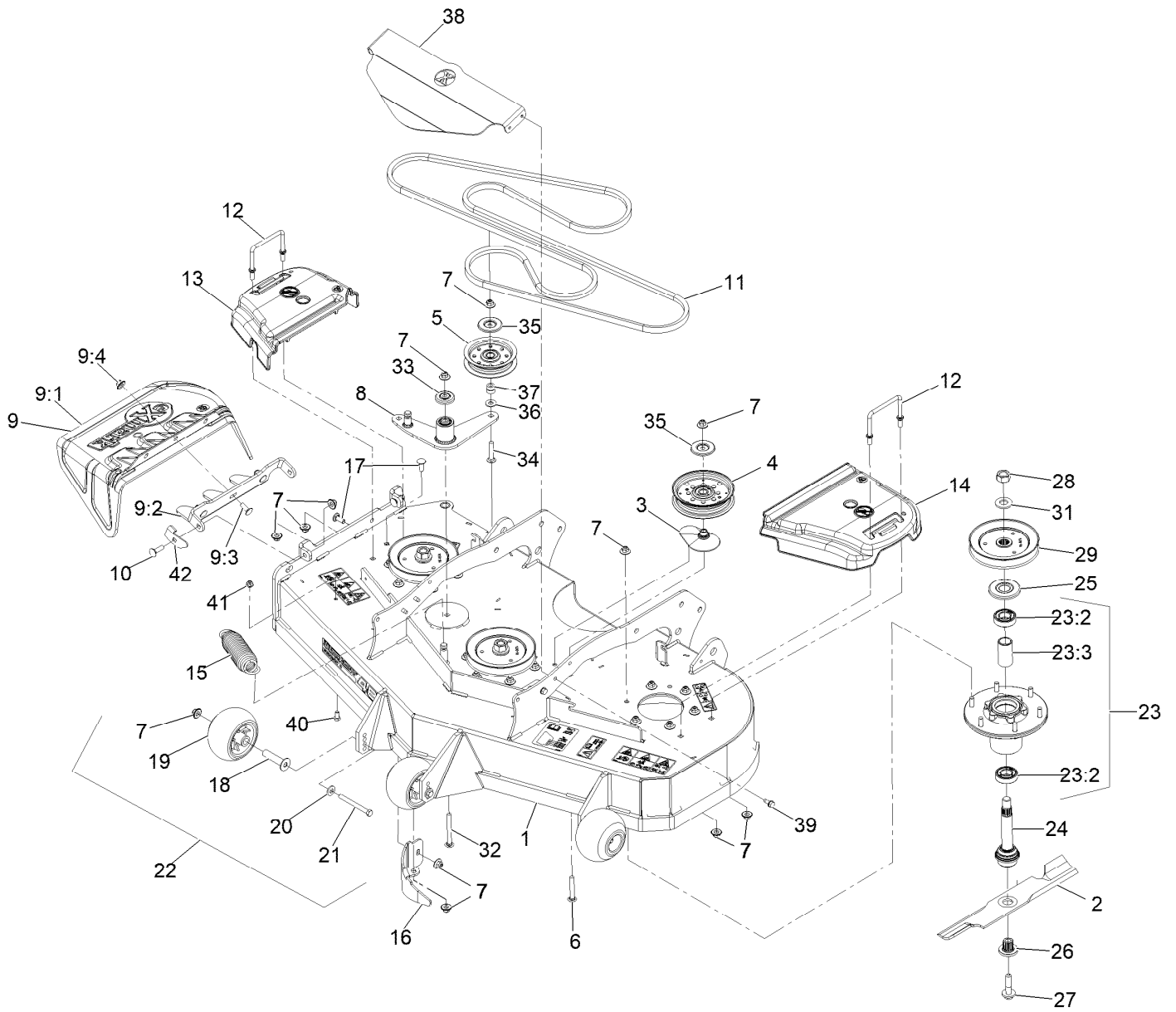
Complete Deck Assembly



Complete Deck Assembly (continued)

<i>Ref.</i>	<i>Part Number</i>	<i>Qty.</i>	<i>Description</i>
1	142-8064	1	ASM-Deck Complete 484
2	142-8317	2	Spacer - HOC Spring

Deck Assembly



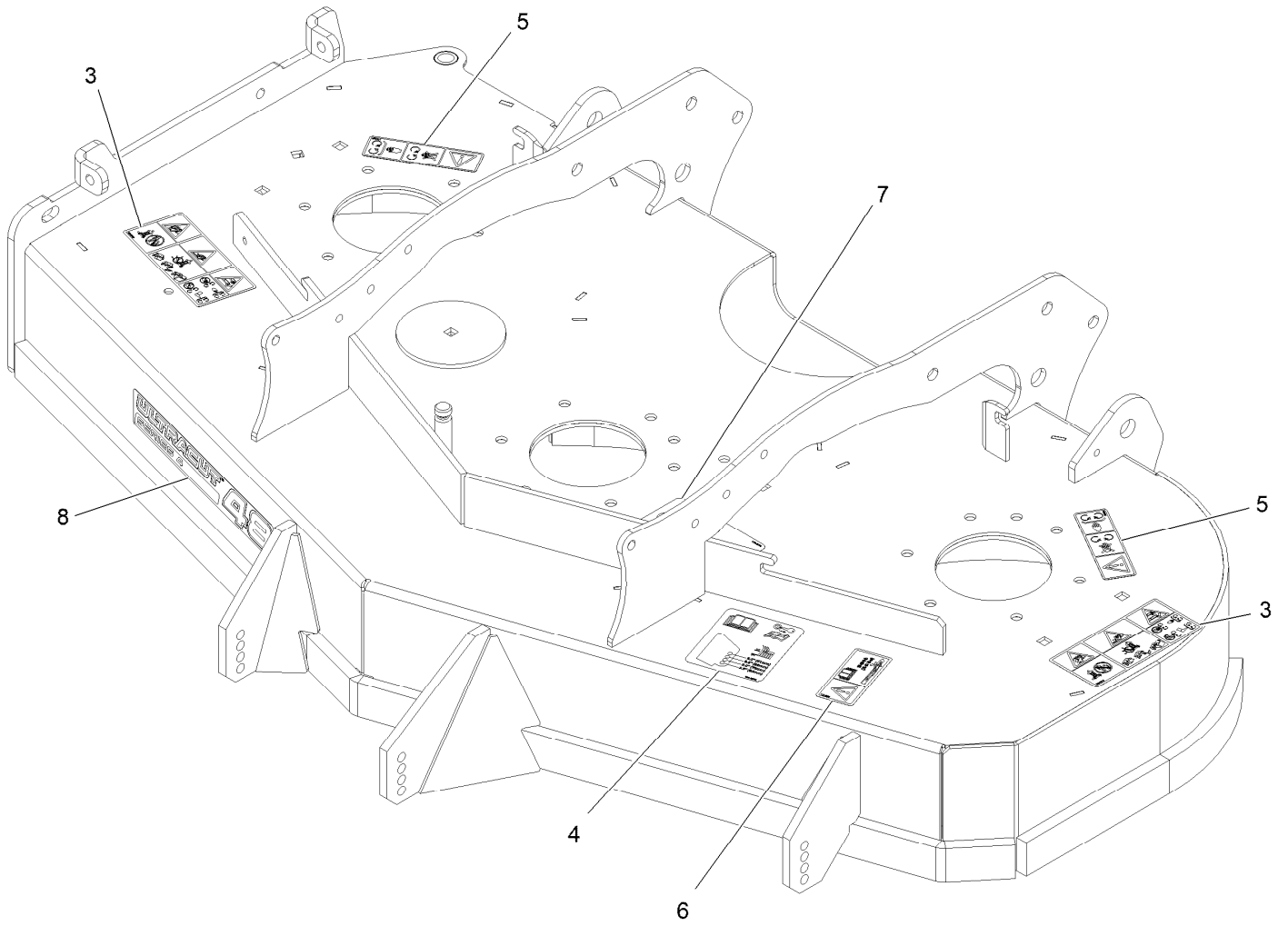
Deck Assembly (continued)

<i>Ref.</i>	<i>Part Number</i>	<i>Qty.</i>	<i>Description</i>	<i>Ref.</i>	<i>Part Number</i>	<i>Qty.</i>	<i>Description</i>
1	142-5074	1	ASM-Deck W/Decals 484	19	103-8415	3	Roller-Anti-Scalp
2	103-6381	3	Blade, Solid ●	20	98-5975	3	Washer-Belleville
2	103-6386	3	Blade, Low Lift ●	21	116-9362	3	Screw-HH
2	103-6391	3	Blade, Mulching ■	22	116-9981	3	Kit, Anti-Scalp Roller
2	103-6401	3	Blade-Notched	23	116-3344	3	ASM-Cutter Hsg With Bearings
2	116-5177	3	Blade-Extreme 2, 16.25" ●	23:2	116-0720	2	Bearing-Ball
3	109-2872	1	Spacer-Pulley	23:3	116-3312	1	Spacer-Bearing
4	126-9187	1	Pulley-Idler, Flat	24	116-3341	3	ASM-Spindle And Seal
5	116-3626	1	Pulley-Idler	25	116-1286	3	Guard,Bearing Top .989
6	3231-44	1	Screw-CARR	26	103-3037	3	Bushing, Splined
7	109-6658	32	Nut-Flange, NI	27	109-9220	3	Screw-Sems
8	116-3806	1	Idler Arm ASM W/Bearings	28	116-7306	3	Nut-Hex
9	109-7188	1	ASM,Discharge Chute	29	116-0674	3	Sheave,Blade Drive 5.90
9:1	109-2738	1	Chute, Discharge	31	103-2802	3	Washer
9:2	109-8675-01	1	Bracket,Discharge Chute	32	3231-11	1	Screw-CARR
9:3	3231-22	3	Screw-CARR	33	103-2916	1	Guard-Top
9:4	109-6658	3	Nut-Flange, NI	34	3231-6	1	Screw-CARR
10	3231-25	2	Bolt-CARR	35	126-8043	2	Shield-Dust
11	142-8172	1	Belt-B147.4	36	3256-4	1	Washer-Flat
12	109-6982	2	Wireform-Cover	37	1-513791	1	Bushing
13	109-6935	1	Cover-Belt, RH	38	142-6764-01	1	Guard-Front Deck
14	109-6936	1	Cover-Belt, LH	39	32144-11	4	Screw-HWH
15	116-6317	1	Spring-Extension	40	322-2	1	Screw-HH
16	116-5995-01	1	Baffle-Dogleg,Lzs Lzx Vt48	41	104-8300	1	Nut-HF, NI
17	3231-22	2	Screw-CARR	42	135-0064	1	Stop-Discharge Chute
18	116-8131	3	Axle, Roller				

● Optional Equipment

■ Requires installation of mulch kit for proper mulching. See your Exmark dealer for details.

Deck W/Decals Assembly

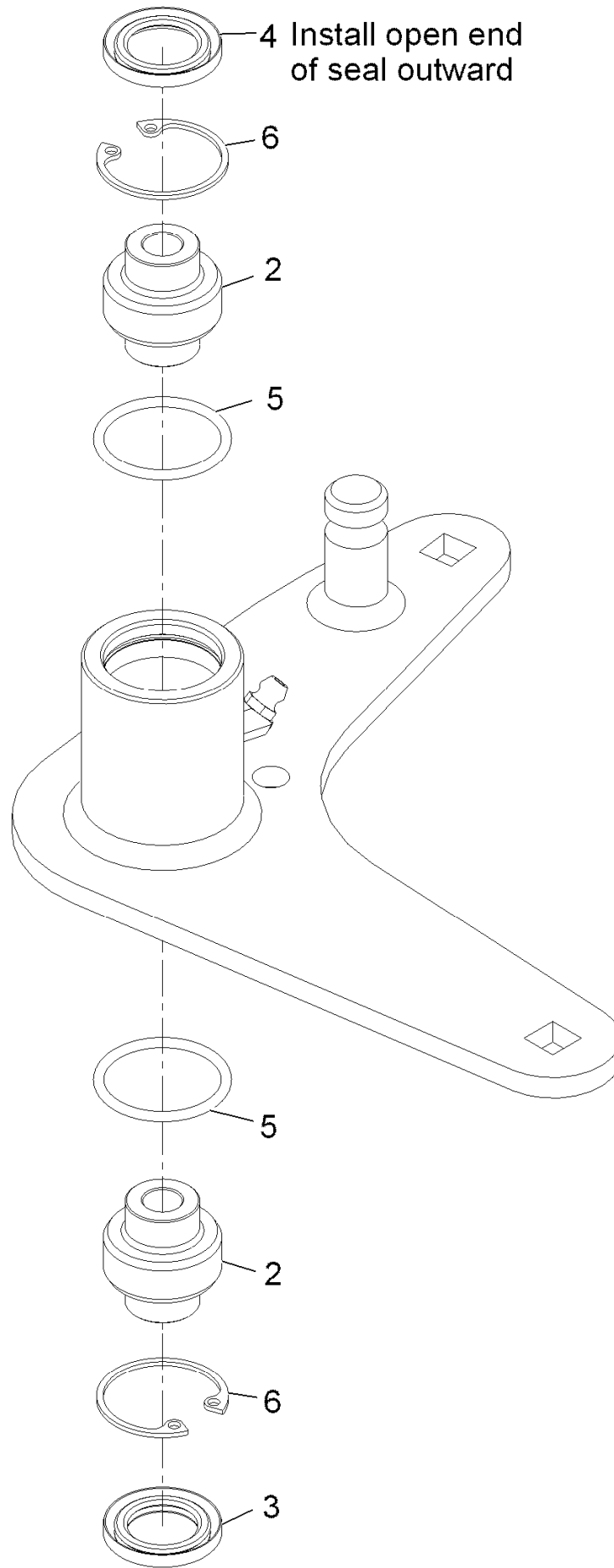


Deck W/Decals Assembly (continued)

<i>Ref.</i>	<i>Part Number</i>	<i>Qty.</i>	<i>Description</i>
3	135-5210	2	Decal-Warning Thrown Obj
4	109-6036	1	Decal-Roller, Anti-Scalp
5	112-9028	2	Decal-Cover, Missing

<i>Ref.</i>	<i>Part Number</i>	<i>Qty.</i>	<i>Description</i>
6	116-8283	1	Decal-Torque, Bolt
7	116-8774	1	Decal-Belt Routing
8	126-6587	1	Decal, 484

Idler Arm Assembly No. 116-3806

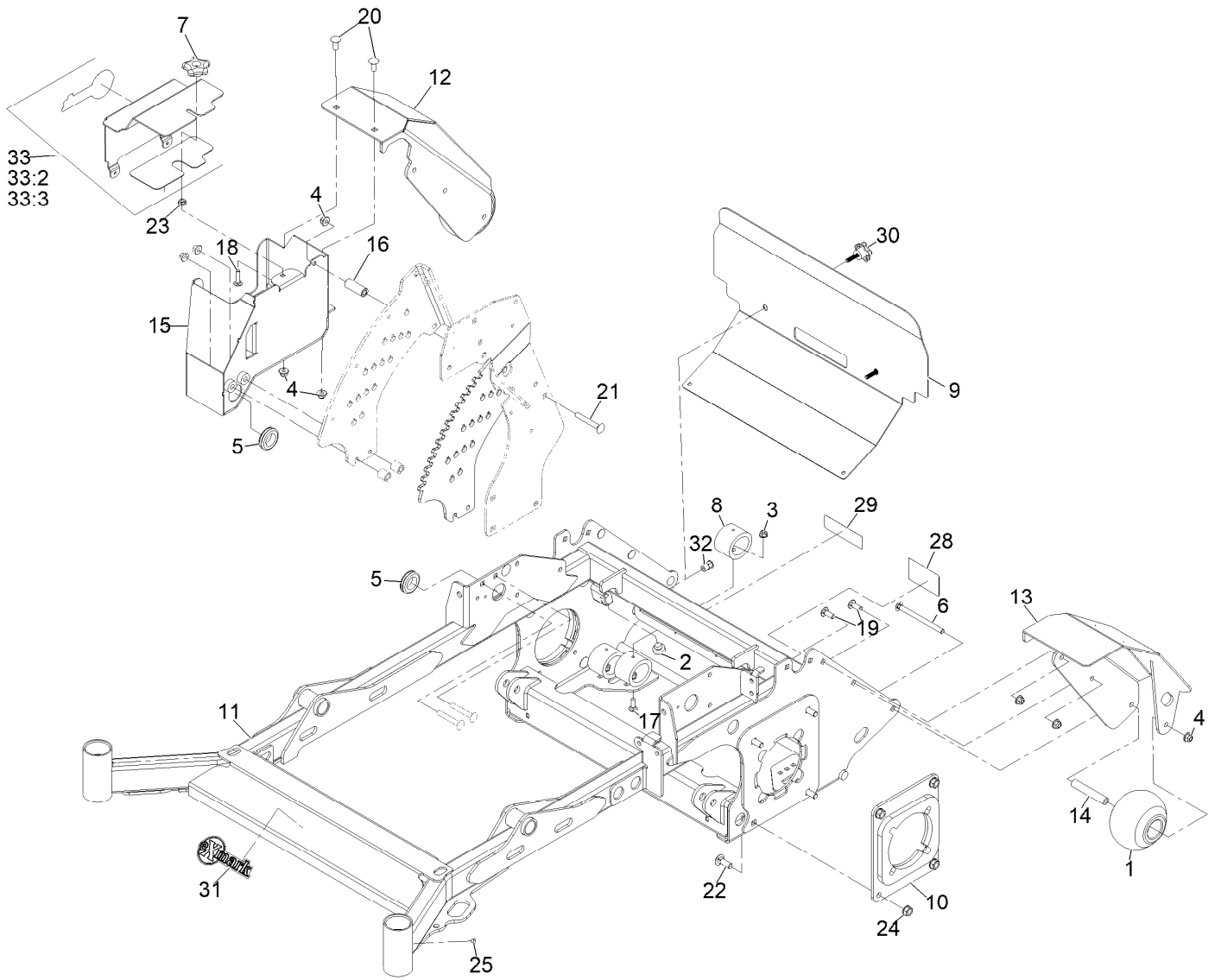


Idler Arm Assembly No. 116-3806 (continued)

<i>Ref.</i>	<i>Part Number</i>	<i>Qty.</i>	<i>Description</i>
2	103-3504	2	Bearing-Spherical
3	103-3505	1	Seal-Lip, Double
4	103-3506	1	Seal-Single Lip

<i>Ref.</i>	<i>Part Number</i>	<i>Qty.</i>	<i>Description</i>
5	106-7159	2	O-Ring
6	32120-10	2	Ring-Retaining

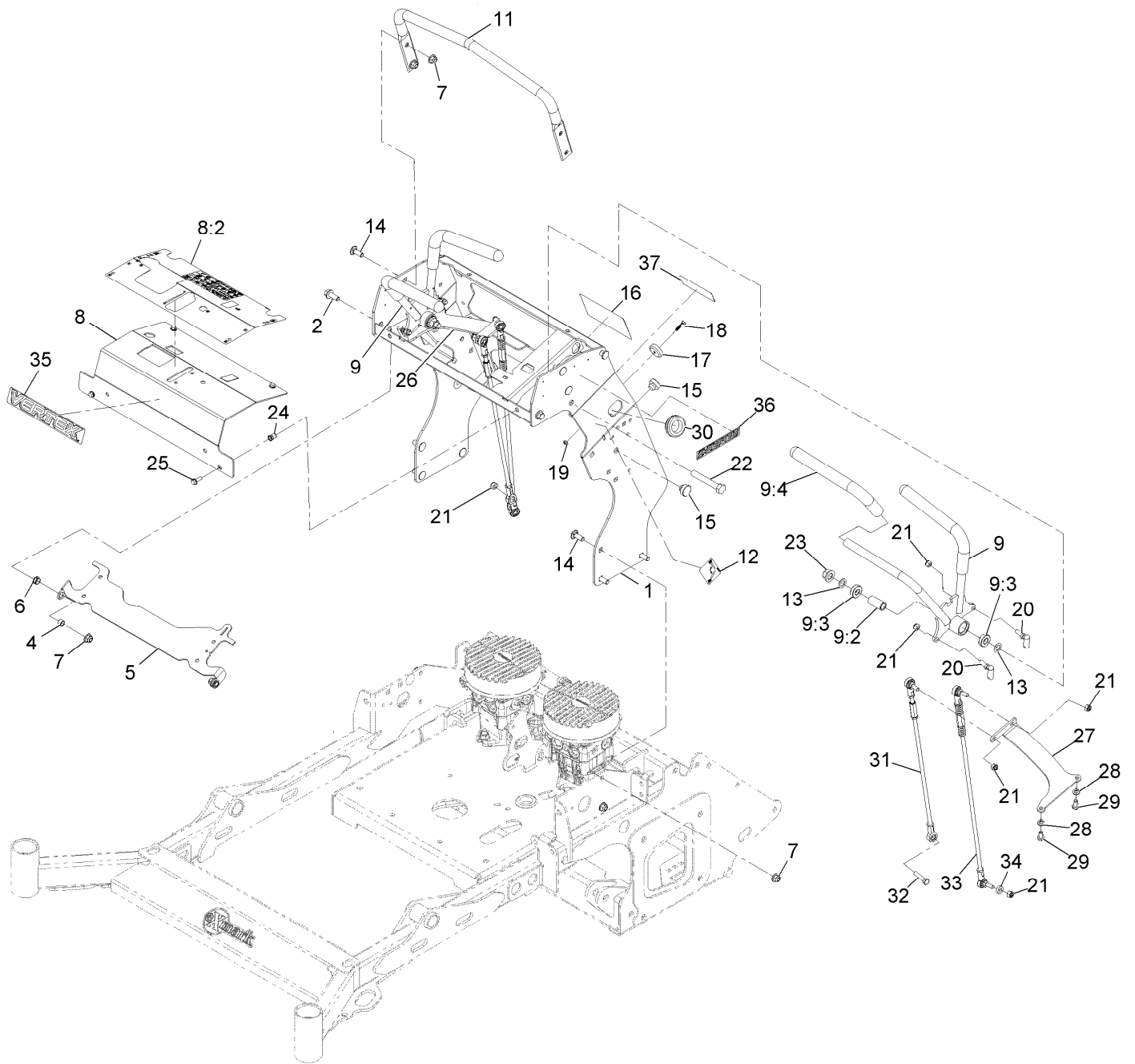
Main Frame Assembly



Main Frame Assembly (continued)

<i>Ref.</i>	<i>Part Number</i>	<i>Qty.</i>	<i>Description</i>	<i>Ref.</i>	<i>Part Number</i>	<i>Qty.</i>	<i>Description</i>
1	103-8415	2	Roller-Anti-Scalp	18	3230-29	1	Screw-CARR
2	104-1412	2	Bumper-Rubber	19	3231-22	4	Bolt-Carriage 3/8-16 X 1
3	104-8300	4	Nut-Nyloc 5/16-18 Flg	20	3231-27	2	Bolt-Carriage 3/8-16 X 7/8
4	104-8301	9	Nut-Nyloc 3/8-16 Flg	21	3231-9	1	Bolt-Carriage 3/8-16 X 2 3/4
5	108-3723	2	Grommet	22	3232-2	8	Bolt-CARR
6	109-6795	2	Bolt-Carriage 3/8-16 X 5	23	32128-20	1	Nut-Whizlock 5/16-18
7	117-5976	1	Knob-Handle	24	32128-37	8	Nut-Whizlock 7/16-14
8	135-2548	4	Bumper-Isolator	25	1-811010	2	Plug
9	142-8804-03	1	Guard-Rear Foot	28	116-8253	1	Decal-Drive Release
10	142-8803-03	2	Wid-Mtr Mount 48/52	29	112-9028	1	Decal-Cover, Missing
11	142-8823	1	Mainframe ASM -48/52	30	139-2401	2	Knob
12	142-6264-01	1	Fender- Wheel RH [red]	31	126-6575	1	Decal-Exmark Logo
13	142-6265-01	1	Fender- Wheel LH [red]	32	137-1218	2	Nut-Clinch
14	142-6400	2	Spacer- Roller	33	142-8510	1	ASM-Lid Battery W/Pad
15	142-6571-03	1	Weld-Battery Box	33:2	142-9384	1	Pad-Battery Box Lid
16	142-6675	1	Spacer- Roller	33:3	126-6575	1	Decal-Exmark Logo
17	3230-2	4	Bolt-Carriage 5/16-18 X 1				

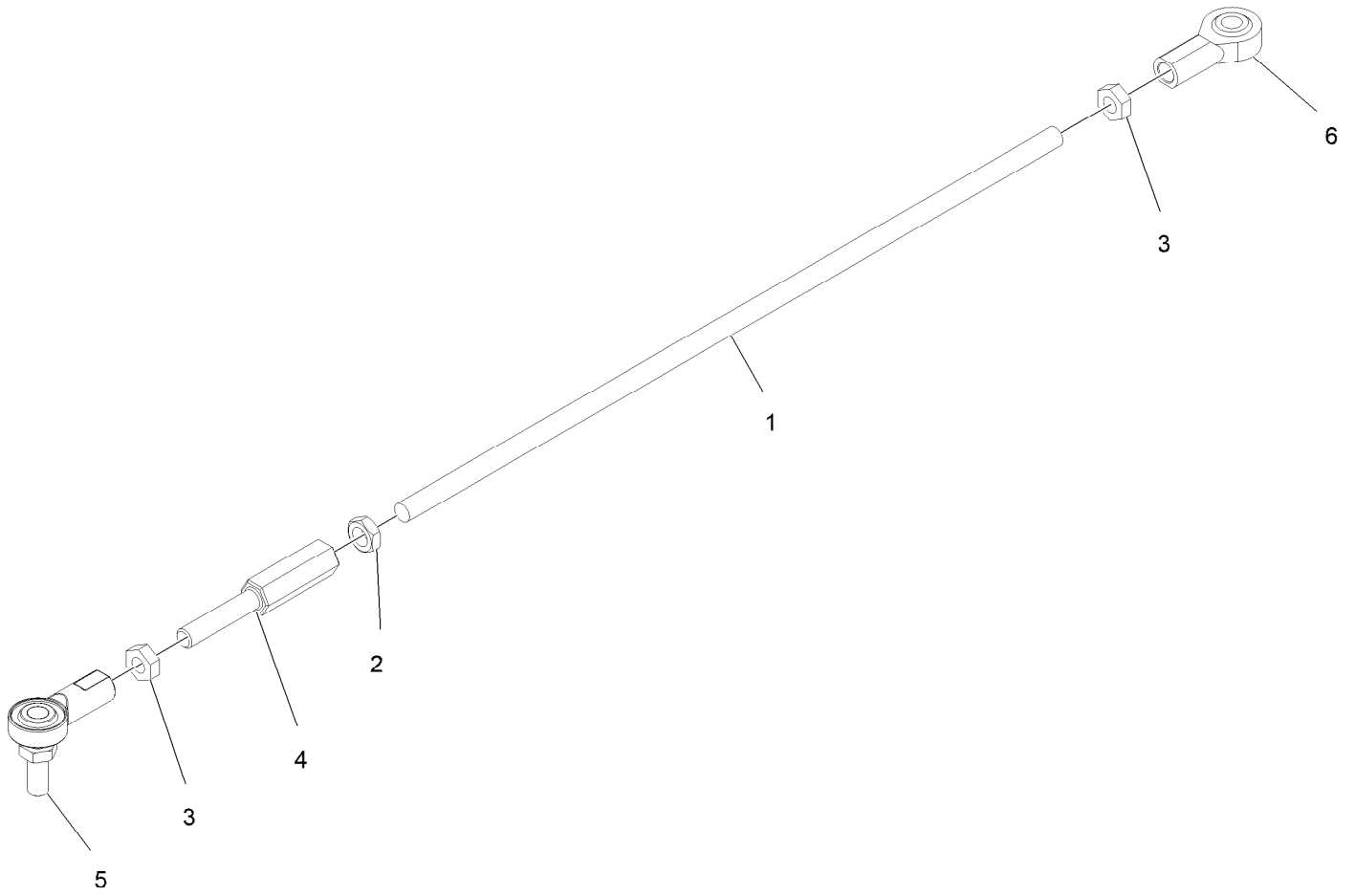
Controls and Tower Assembly



Controls and Tower Assembly (continued)

<i>Ref.</i>	<i>Part Number</i>	<i>Qty.</i>	<i>Description</i>	<i>Ref.</i>	<i>Part Number</i>	<i>Qty.</i>	<i>Description</i>
1	142-6031-01	1	ASM-Tower [red]	18	142-7830	2	Screw Flat HD #10-24X1.00
2	3234-42	2	Screw HHF 3/8-16 X 1	19	110-3145	2	Nut-Lock
4	142-7468	2	Spacer-Brake Pivot	20	2411-33	4	Balljoint-RH (W/Grommet)
5	142-7749-03	1	Plate-Motion Cntrl Lock	21	3296-4	11	Nut-Lock 5/16-24
6	116-1393	2	Bushing	22	325-13	2	Screw-HH 1/2-13 X 3 1/4
7	104-8301	12	Nut-Nyloc 3/8-16 Flg	23	99-5107	2	Nut-Lock 1/2-13
8	142-8251	1	Panel-Control W/ Decal	24	138-2760	4	Nut-Clinch, Hex
8:2	146-0288	1	Decal-Control Panel EFI	25	119-1138	4	Screw-HHF
9	142-6057	2	ASM-Ctrl Lever	26	142-6017-03	1	Bracket-Link Ctrl LH
9:2	142-6579	1	Spacer	27	142-6018-03	1	Bracket-Link Ctrl RH
9:3	52-2450	2	Bearing-Ball	28	3253-4	4	Washer-Lock 5/16
9:4	116-2357	2	Grip-Handle, Control	29	3210-3	4	Screw-HH 5/16-24 X 3/4
11	142-6067-03	1	Bar-Reference	30	108-3723	1	Grommet
12	116-5988	1	Decal-Park Brake, CE	31	142-8611	2	ASM-Motion Control Short
13	98-1629	4	Washer	32	3210-8	1	Screw-HH 5/16-24 X 1 1/2
14	3231-22	10	Bolt-Carriage 3/8-16 X 1	33	142-7545	2	ASM-Motion Control Long
15	104-1412	5	Bumper-Rubber	34	142-7724	2	Spacer
16	142-7432	1	Decal-Service Aid	35	142-8185	1	Decal-Vertex Logo
17	142-7895	2	Magnet-Rare Earth Thigh Pad	36	126-6998	2	Decal-S-Series
				37	142-8303	1	Decal-Fuse

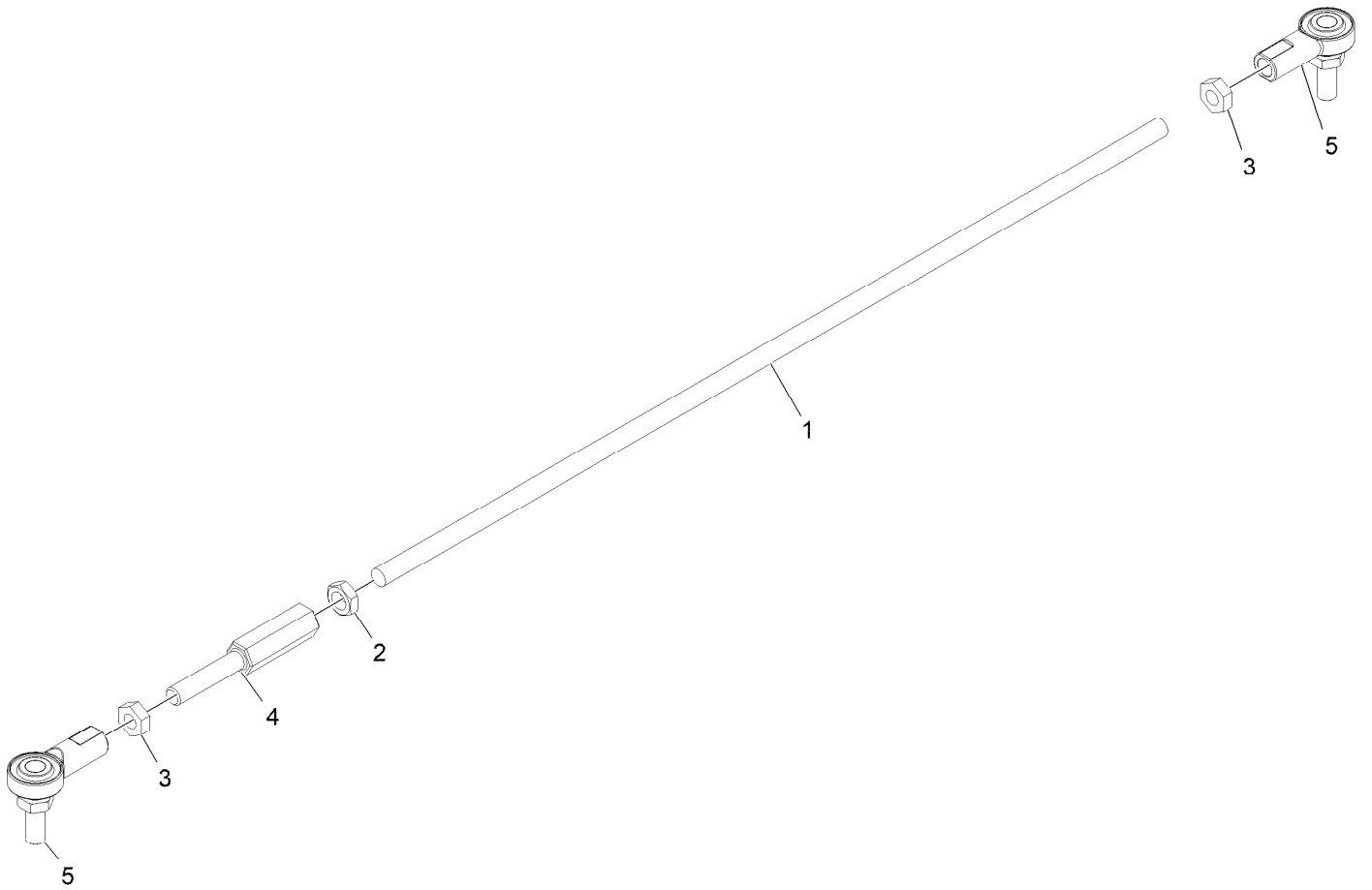
Motion Control Assembly (Short)



Motion Control Assembly (Short) (continued)

<i>Ref.</i>	<i>Part Number</i>	<i>Qty.</i>	<i>Description</i>	<i>Ref.</i>	<i>Part Number</i>	<i>Qty.</i>	<i>Description</i>
1	142-8610	1	Rod-Motion Control Short	4	142-7543	1	Rod-Adjust
2	3220-20	1	Nut-Jam 5/16-24 LH	5	1-513132	1	Joint, Ball
3	3220-2	2	Nut-Jam 5/16-24	6	1-543017	1	Balljoint

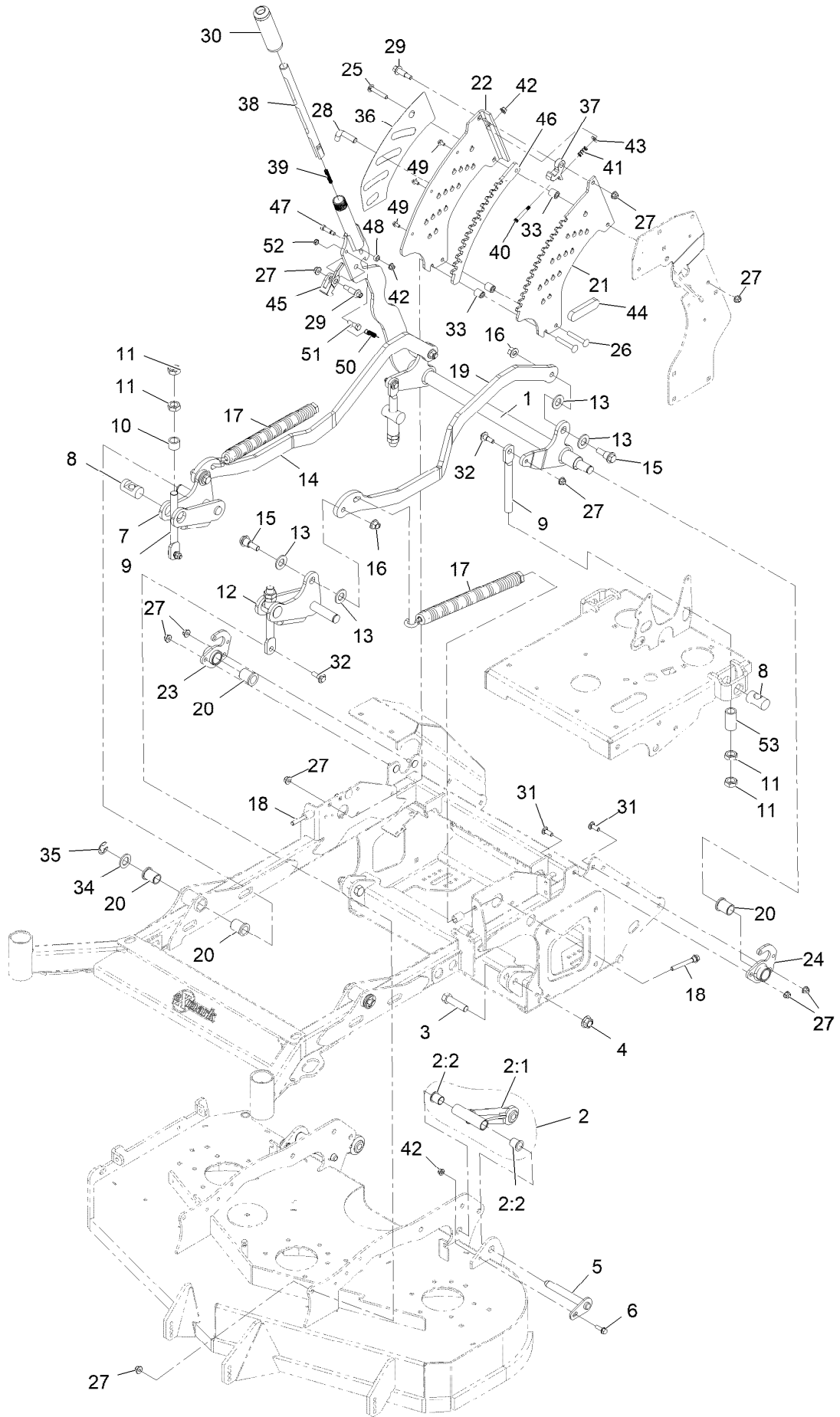
Motion Control Assembly (Long)



Motion Control Assembly (Long) (continued)

<i>Ref.</i>	<i>Part Number</i>	<i>Qty.</i>	<i>Description</i>	<i>Ref.</i>	<i>Part Number</i>	<i>Qty.</i>	<i>Description</i>
1	142-7544	1	Rod-Motion Control Long	4	142-7543	1	Rod-Adjust
2	3220-20	1	Nut-Jam 5/16-24 LH	5	1-513132	2	Joint, Ball
3	3220-2	2	Nut-Jam 5/16-24				

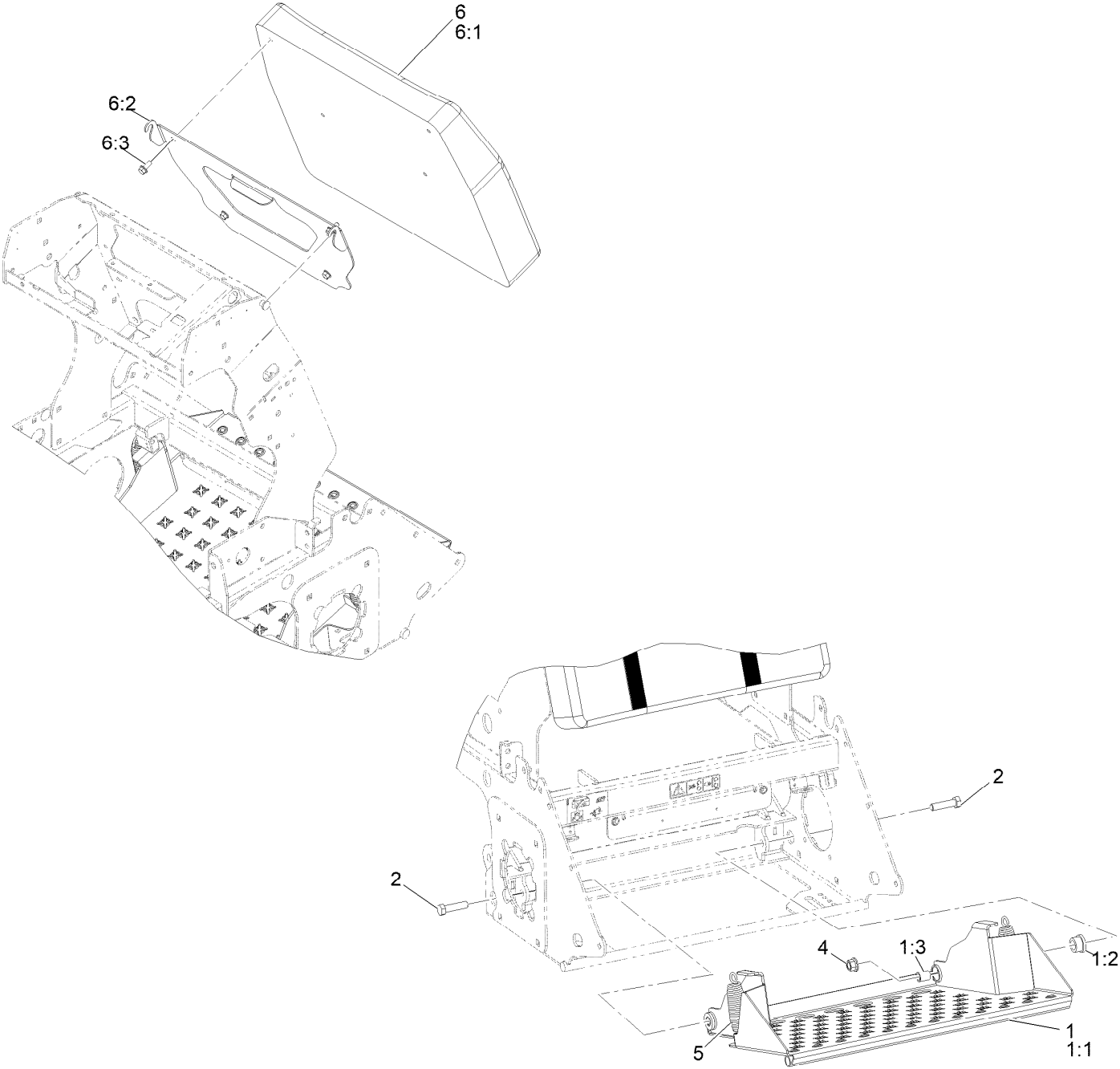
Deck Lift Assembly



Deck Lift Assembly (continued)

<i>Ref.</i>	<i>Part Number</i>	<i>Qty.</i>	<i>Description</i>	<i>Ref.</i>	<i>Part Number</i>	<i>Qty.</i>	<i>Description</i>
1	146-0906-03	1	Cross Shaft-Decklift-Rear [black]	26	3231-44	2	Bolt-Carriage 3/8-16 X 2 1/2
2	142-5096	2	ASM-Deck Strut W/Bushings	27	104-8301	13	Nut-Nyloc 3/8-16 Flg
2:1	142-9276	1	ASM-Deck Strut	28	116-5584	1	Pin-HOC
2:2	142-5095	2	Bushing-Igus Flng .75X1	29	62-1330	2	Bolt-Shoulder
3	121-2111	2	Screw-HH	30	142-6679-03	1	Grip-Handle-Decklift
4	142-8396	2	Nut-Flng 5/8-18 Ctrlock GR G	31	3231-22	4	Bolt-Carriage 3/8-16 X 1
5	142-6519	2	ASM-Deck Strut Pin	32	109-9840	4	Screw-Hex Flange 3/8-16 X .80
6	3234-29	2	Screw-HH Flg 5/16-18 X 1	33	142-6720	3	Spacer-HOC
7	142-7944-03	1	Weld-Arm-Decklift-Front-RH	34	103-0357	2	Washer
8	142-7939	4	Trunion-Deck Lift	35	32151-103	2	E-Ring
9	142-9163	4	Link,Deck Lift Adjuster	36	142-6805	1	Decal-Height Of Cut
10	142-7940	2	Spacer-Decklift	37	142-7290	1	Pawl-Decklift
11	3220-7	8	Nut-Jam	38	142-6524	1	Plunger-Top
12	142-7945-03	1	Weld-Arm-Decklift-Front-LH	39	142-7365	1	Spring-Compression
13	3256-28	8	Washer-3/4 SAE	40	142-7437	1	Screw-Shoulder-Cap
14	142-8670-03	1	Link-Decklift-RH	41	117-1031	1	Spring-Compression
15	116-0780	4	Screw-Shoulder HHF 1/2-13 X 1.12	42	104-8300	4	Nut-Nyloc 5/16-18 Flg
16	99-5107	4	Nut-Lock 1/2-13	43	107-0279	1	Washer
17	116-0886	2	Spring-Extension	44	142-7963	1	Plate-Guide HOC Inner
18	92-7674	2	Screw-SHCS 3/8-16 X 2.212	45	142-8673	1	Pawl-Lock-Decklift
19	142-8671-03	1	Link-Decklift-LH	46	142-9151	1	Plate-Doubler-HOC-Lock
20	142-4794	6	Bushing-Flanged	47	142-8707	1	Screw-Shoulder-Cap
21	142-9150	1	Plate-Inner-HOC	48	107-3237	1	Spacer
22	142-8589-03	1	Plate-Outer-HOC	49	119-1065	3	Screw-HWH
23	142-6460	1	Support-HOC Shaft RH	50	110-9458	1	Spring-Extension
24	142-6463	1	Support-HOC Shaft LH	51	121-6991	1	Bolt-Shoulder
25	3231-40	1	Bolt-Carriage 3/8-16 X 2 1/4	52	3296-47	1	Nut-Nyloc 5/16-18 Thin
				53	142-8897	2	Spacer 1.13 O.D. X .81 I.D. X 2.05L

Platform and Pad Assembly



Platform and Pad Assembly (continued)

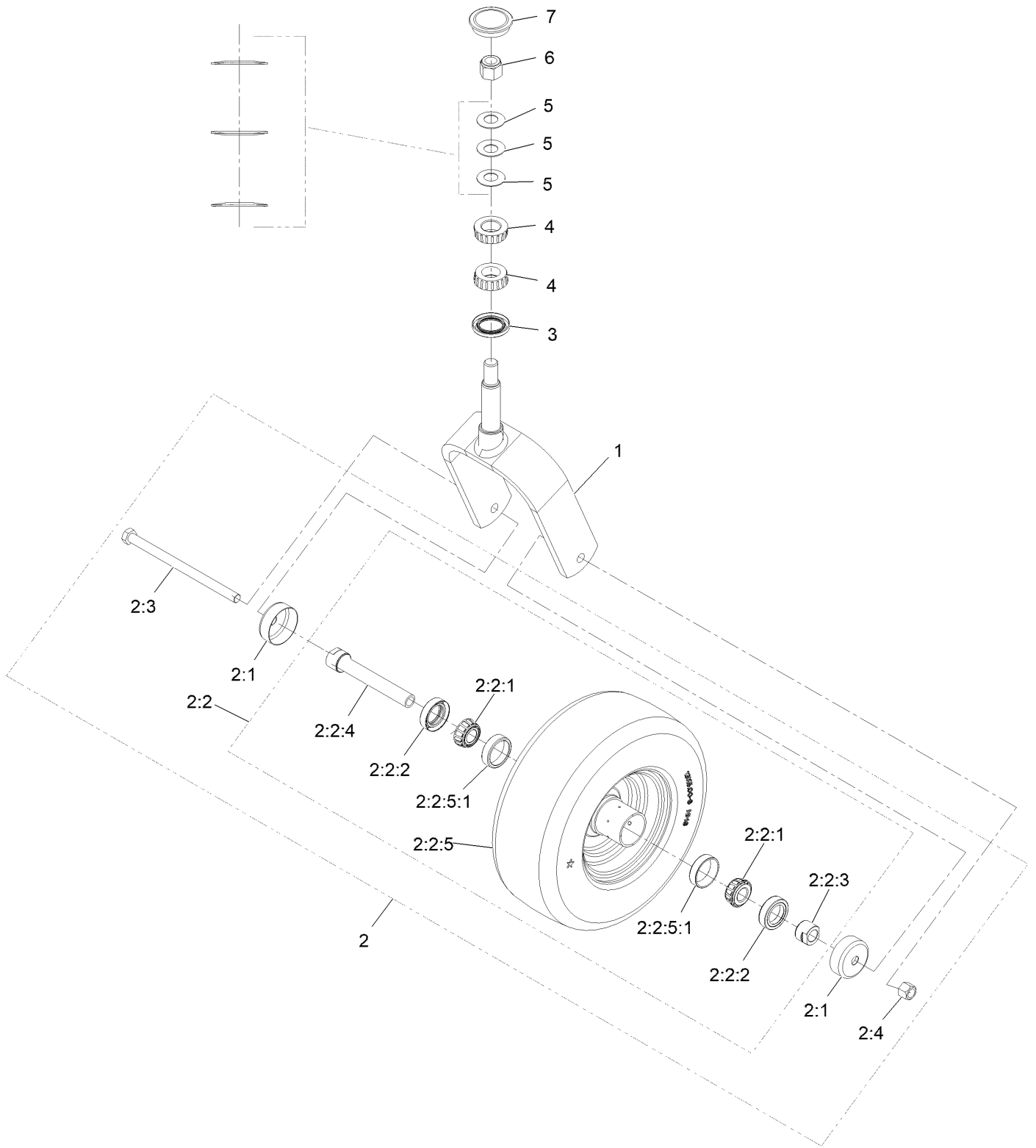
<i>Ref.</i>	<i>Part Number</i>	<i>Qty.</i>	<i>Description</i>	<i>Ref.</i>	<i>Part Number</i>	<i>Qty.</i>	<i>Description</i>
1	142-8866	1	ASM-Operators Platform	4	99-5107	2	Nut-Lock 1/2-13
1:1	142-8852-03	1	ASM-Operator Platform [black]	5	116-6316	2	Spring-Extension
1:2	142-6033	2	Bushing-Rubber	6	142-6003	1	ASM-Thigh Pad
1:3	142-6034	2	Spacer	6:1	142-6002	1	Pad-Thigh
2	325-8	2	Screw-HH 1/2-13 X 1 1/4	6:2	142-7710-01	1	Plate-Hinge-Thigh Pad
				6:3	3234-5	4	Screw-HH Flg 5/16-18 X 3/4

Front Caster and Fork Assembly (continued)

<i>Ref.</i>	<i>Part Number</i>	<i>Qty.</i>	<i>Description</i>
1		2	ASM-Front Caster W/Fork ●

● Not serviced separately

Caster Wheel and Fork Assembly



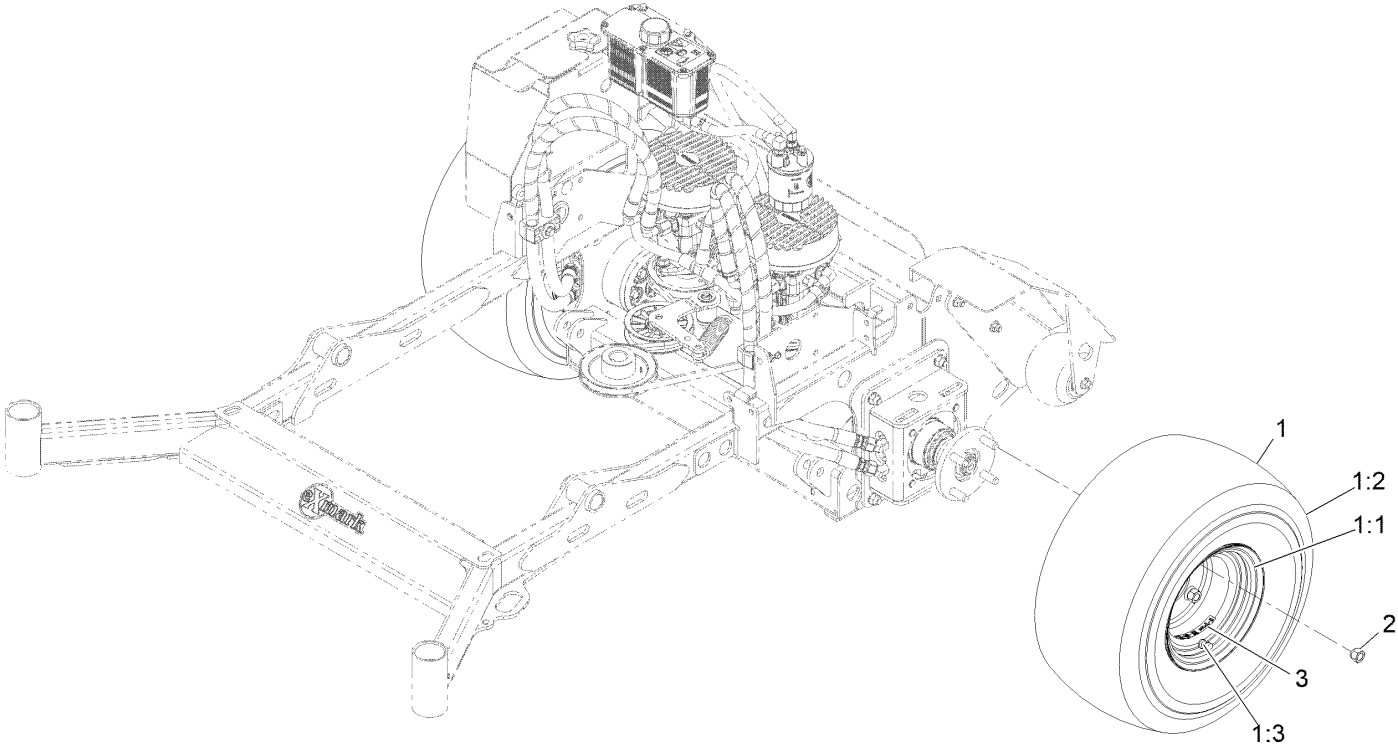
Caster Wheel and Fork Assembly (continued)

<i>Ref.</i>	<i>Part Number</i>	<i>Qty.</i>	<i>Description</i>	<i>Ref.</i>	<i>Part Number</i>	<i>Qty.</i>	<i>Description</i>
1	142-4770-01	1	Weld-Caster, Fork	2:2:5:1	1-633584	2	Bearing-Cup
2	109-9126	1	Wheel & Tire ASM	2:3	325-42	1	Screw-HH 1/2-13 X 8
2:1	103-2768	2	Guard-Seal	2:4	3296-23	1	Nut-Nyloc 1/2-13
2:2		1	Wheel And Tire ASM ●	3	116-5647	1	Seal-Grease
2:2:1	1-633585	2	Bearing-Cone Tapered Roller	4	1-543509	2	Cone-Bearing Tapered Roller
2:2:2	103-0063	2	Seal-Double Lip	5	1-633508	3	Washer-Spring Disc
2:2:3	103-3051	1	Spacer-Nut ■	6	3296-51	1	Nut-Nyloc 3/4-10
2:2:4	126-5360	1	Axle-Caster	7	103-4882	1	Cap-Grease
2:2:5		1	Wheel And Tire ASM ●				

● Not serviced separately

■ Use Pro-Lock, Nut Type (P/N 1-840022, .5ml tube) on threads.

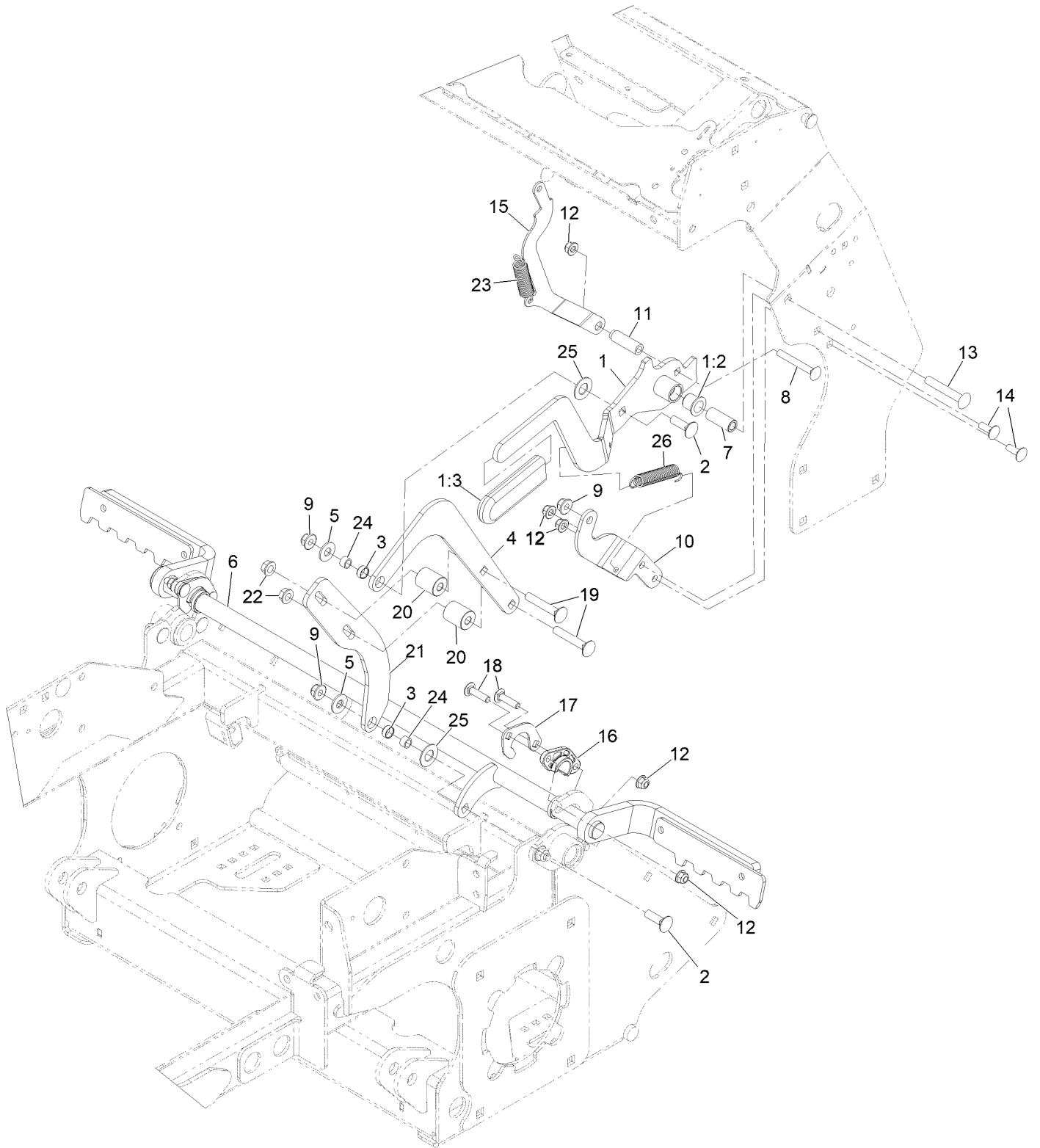
Rear Wheel Assembly



Rear Wheel Assembly (continued)

<i>Ref.</i>	<i>Part Number</i>	<i>Qty.</i>	<i>Description</i>	<i>Ref.</i>	<i>Part Number</i>	<i>Qty.</i>	<i>Description</i>
1	142-6054	2	Wheel/Tire ASM	2	242-50	8	Nut-Lug 1/2-20
1:1	137-2597	1	Rim	3	126-2055	2	Decal-Torque, Wheel Hub Lug
1:2	142-6416	1	Tire				
1:3	5108	1	Valve				

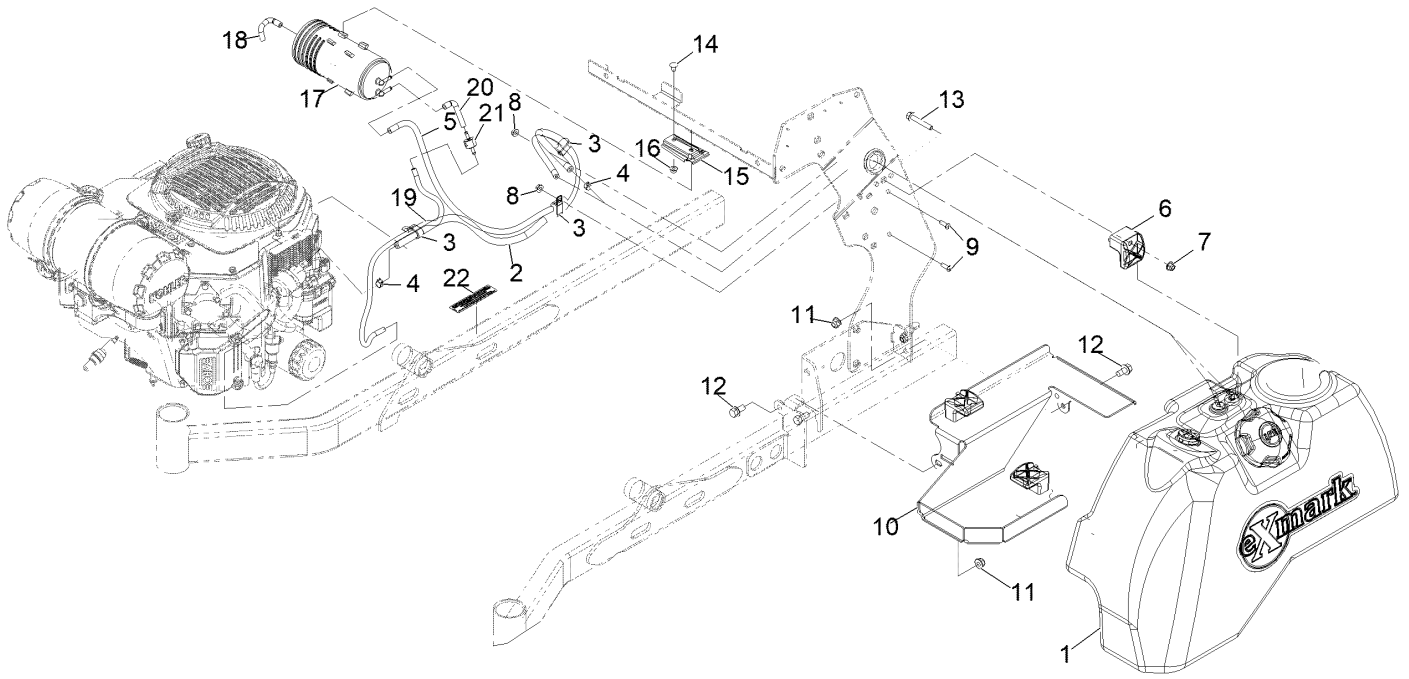
Park Brake Assembly



Park Brake Assembly (continued)

<i>Ref.</i>	<i>Part Number</i>	<i>Qty.</i>	<i>Description</i>	<i>Ref.</i>	<i>Part Number</i>	<i>Qty.</i>	<i>Description</i>
1	146-0208	1	ASM-Handle Brake	13	3231-44	1	Bolt-Carriage 3/8-16 X 2 1/2
1:2	108-2974	2	Bushing-Flange	14	3230-10	2	Bolt-Carriage 5/16-18 X 7/8
1:3	1-633268	1	Grip-Lever	15	142-7765-03	1	Link-Brake Control Lock
2	3231-25	2	Bolt-Carriage 3/8-16 X 1 1/4	16	115-5065	2	Bushing-Flange
3	133-5109	2	Bearing-Sleeve	17	135-7867	2	Support, Bearing
4	142-7464	1	Link-Brake Upper	18	3230-29	4	Screw-Carriage 5/16-18 X 1 1/4
5	3256-4	2	Washer-3/8 Std	19	3231-7	2	Bolt-Carriage 3/8-16 X 2 1/4
6	142-7470-03	1	ASM-Brake Shaft [black]	20	142-7467	2	Spacer-.39 ldx1.0 Odx1.2 L
7	146-0245	1	Spacer-Pivot	21	142-9372	1	Link - Lower Brake
8	3230-8	1	Bolt-Carriage 5/16-18 X 2 1/2	22	3290-357	2	Nut-Whizlock 3/8-16
9	104-8301	3	Nut-Nyloc 3/8-16 Flg	23	126-2127	1	Spring-Extension
10	146-0570-03	1	Bracket-Brake Lever Supt	24	142-7468	2	Spacer-Brake Pivot
11	142-6746	1	Spacer-.31 X 1.25 Yz	25	61-1950	2	Washer-Plastic
12	104-8300	7	Nut-Nyloc 5/16-18 Flg	26	109-7124	1	Spring-Extension

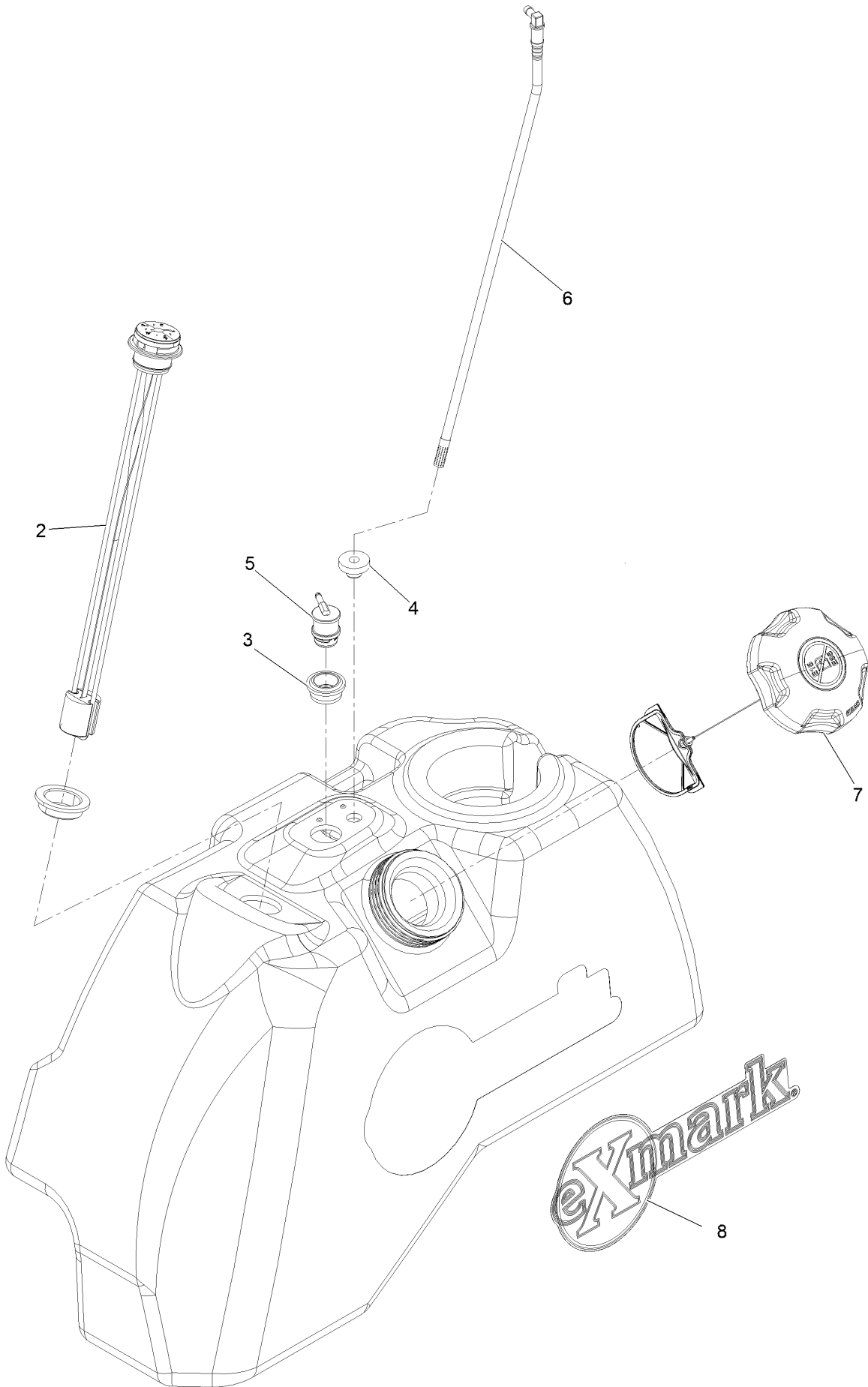
Fuel Assembly



Fuel Assembly (continued)

<i>Ref.</i>	<i>Part Number</i>	<i>Qty.</i>	<i>Description</i>	<i>Ref.</i>	<i>Part Number</i>	<i>Qty.</i>	<i>Description</i>
1	142-6113	1	ASM, Fuel Tank 8 Gal	13	142-6275	3	Screw-HHF
2	109-0275	1	Hose-Fuel Line 32"	14	116-5611	2	Bolt-Carriage 1/4-20 X 1/2 Short Neck
3	119-8153	3	Clamp-R, Double Tube	15	114-0292	1	Bracket-Canister, Carbon
4	2412-98	2	Clamp-Hose	16	104-7201	2	Nut-Nyloc 1/4-20 Flg
5	51-3212	1	Hose-Fuel	17	117-1221	1	Canister-Carbon, 800Cc
6	107-4543	3	Clamp	18	119-8502	1	Hose-Vent, Formed
7	104-8300	3	Nut-Nyloc 5/16-18 Flg	19	114-0286	1	Hose-Vent
8	32128-33	2	Nut-Whizlock 1/4-20	20	116-2233	1	Hose-Vent, Formed
9	3274-69	2	Screw-HSBH	21	133-8499	1	Valve-Check, Vacuum
10	142-5959-03	1	Bracket, Fuel Tank	22	133-8062	1	Decal-Arrestor, Spark
11	104-8301	4	Nut-Nyloc 3/8-16 Flg				
12	3234-1	4	Screw-HH Flg 3/8-16 X 3/4				

Fuel Tank Assembly

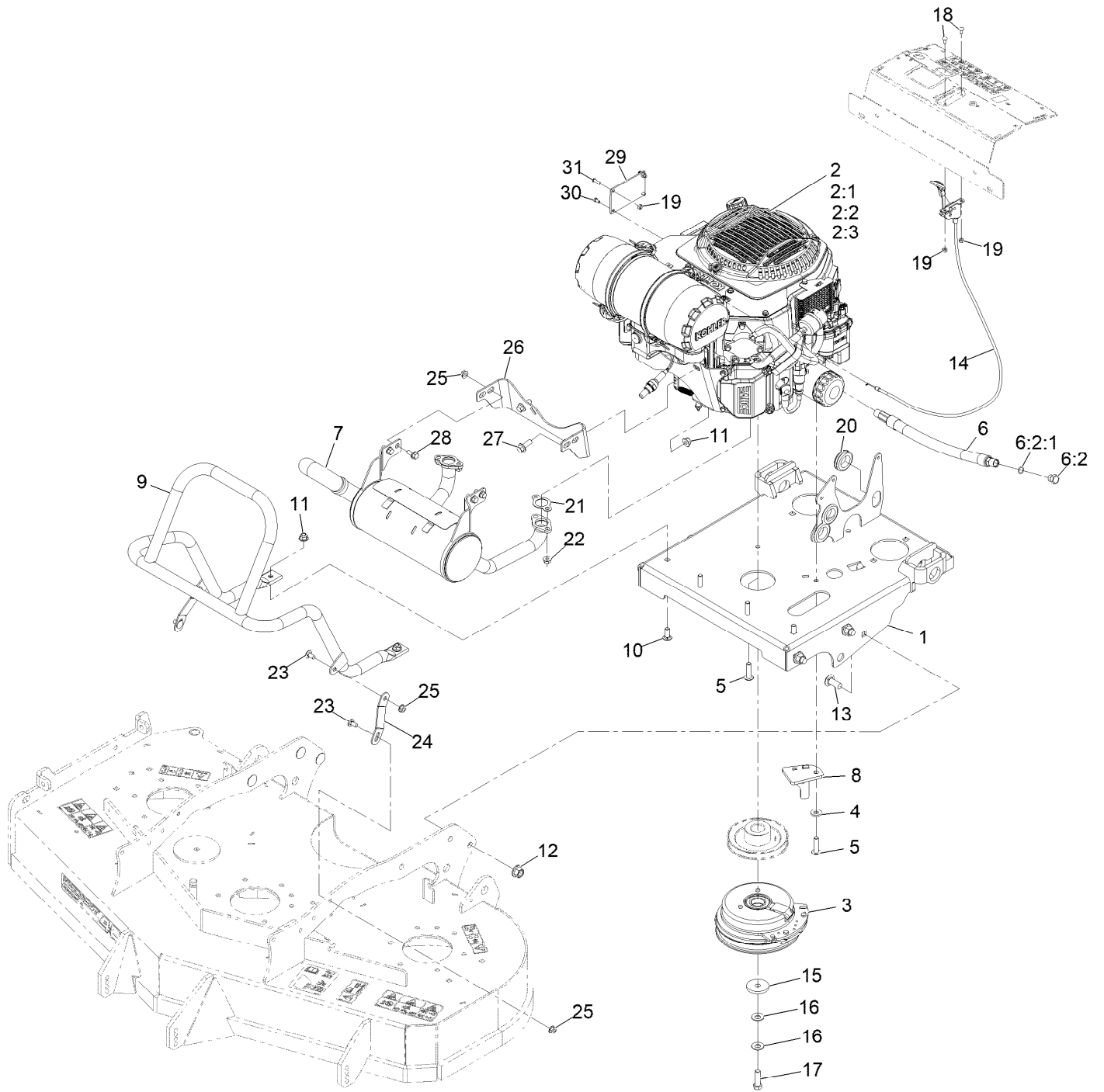


Fuel Tank Assembly (continued)

<i>Ref.</i>	<i>Part Number</i>	<i>Qty.</i>	<i>Description</i>	<i>Ref.</i>	<i>Part Number</i>	<i>Qty.</i>	<i>Description</i>
2	142-8013	1	ASM-Fuel Gauge	7	137-4119	1	Cap-Fuel, Ratcheting
3	114-0284	1	Grommet	8	142-6800	1	Decal-Exmark Logo Fuel
4	46-6560	1	Bushing	99	135-3694	1	Kit-Fuel Gauge Replacement ●
5	119-3547	1	Valve-Vent, Fuel				
6	132-9905	1	Pipe-Stand				

● Not illustrated

Engine Assembly



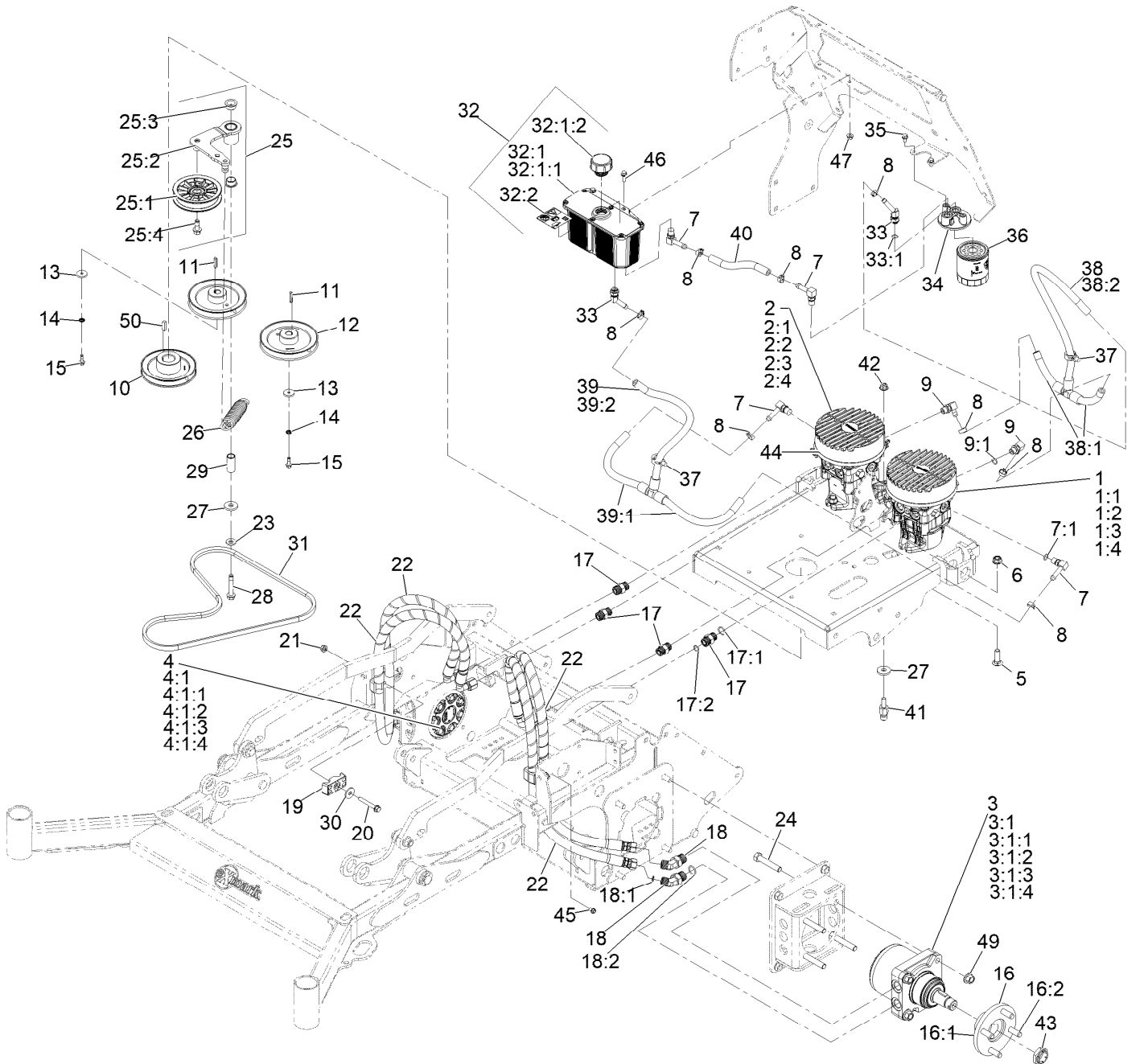
Engine Assembly (continued)

<i>Ref.</i>	<i>Part Number</i>	<i>Qty.</i>	<i>Description</i>	<i>Ref.</i>	<i>Part Number</i>	<i>Qty.</i>	<i>Description</i>
1	142-8814-01	1	Wld-Engine Deck	13	3233-26	6	Screw-CARR,Shortneck
2		1	Engine-Kohler, Ek-Ecv740-3070 ■▲	14	135-2169	1	Control, Throttle
2:1		1	Kohler 52 050 02-S Engine Oil Filter ■▲	15	109-6919	1	Washer-Clutch
2:2		1	Kohler 25 083 01-S Engine Air Filter ■▲	16	1-603610	2	Washer-Spring Disc 7/16
2:3		1	Kohler 25 083 04-S Safety Filter ■▲	17	109-9761	1	Screw-HH 7/16-20 X 1 1/2 W/Loctite
3	116-1604	1	Clutch	18	1-807513	2	Bolt-Carriage #10-24 X 1/2
4	98-5975	3	Washer-Spring Disc 3/8	19	3296-2	4	Nut-Nyloc #10-24
5	126-0983	4	Screw-BHTF	20	108-3723	3	Grommet
6	116-5108	1	Oil Drain Hose ASM	21	110-6697	2	Gasket-Exhaust
6:2	353-508	1	Plug-W/O-Ring ●	22	68-9400	4	Nut-Flange
6:2:1	237-42	1	O-Ring	23	3230-18	4	Bolt-Carriage 5/16-18 X 5/8
7	142-8063	1	Muffler- Kohler, EFI	24	142-7748-03	2	Strap, Muffler Guard
8	142-6567	1	ASM-Clutch Anchor	25	32128-25	8	Nut-Hex 5/16-18 Side Lock
9	142-6783-03	1	Tube-Guard Muffler	26	132-1168	1	Bracket-Muffler
10	3231-22	2	Bolt-Carriage 3/8-16 X 1	27	3234-42	2	Screw HHF 3/8-16 X 1
11	104-8301	4	Nut-Nyloc 3/8-16 Flg	28	3234-5	4	Screw-HH Flg 5/16-18 X 3/4
12	99-5107	6	Nut-Lock 1/2-13	29	142-9198	1	Bracket-Ecu
				30	121-6320	2	Screw-HH
				31	104-2408	2	Screw-HSBH

● Torque to 24-26 ft-lb
▲ Obtain parts from www.kohlerplus.com

■ Not serviced separately

Hydraulic Assembly



Hydraulic Assembly (continued)

Ref.	Part Number	Qty.	Description	Ref.	Part Number	Qty.	Description
1	142-8892	1	Pump-12Cc Lt W/Shock Valve	18:2	237-80	1	O-Ring
1:1	126-2479	1	Kit, 10Cc/12Cc Pump Kit	19	94-8105	4	Clamp-Tube
1:2	105-6184	1	Seal Overhaul Kit	20	139-4479	2	Screw-HHF
1:3	103-7489	1	Guard, Pw Pump Fan	21	104-8300	2	Nut-Nyloc 5/16-18 Flg
1:4	103-7488	1	Fan, Pw Pump Cooling	22	142-6300	4	Hose ASM-HYD HP
2	142-8893	1	Pump-12Cc Rt W/Shock Valve	23	98-5975	1	Washer-Spring Disc 3/8
2:1	126-2479	1	Kit, 10Cc/12Cc Pump Kit	24	325-11	8	Screw-HH 1/2-13 X 2 3/4
2:2	105-6184	1	Seal Overhaul Kit	25	142-6821	1	ASM-Pump Idler
2:3	103-7489	1	Guard, Pw Pump Fan	25:1	109-4077	1	Pulley-Idler, Flat
2:4	103-7488	1	Fan, Pw Pump Cooling	25:2	142-6820	1	ASM-Pump Idler Arm
3	142-8578	1	Motor, T1240 LH	25:3	109-8054	2	Bushing-Flanged
3:1	130-1788	1	Seal Kit	25:4	126-1680	1	Screw-HHF 5/16-18 X 2 1/4
3:1:1		5	Seal-Ring, Viton ●■	26	135-1272	1	Spring, Extension
3:1:2		1	Seal-Commutator ●■	27	1-373034	2	Washer
3:1:3		1	Seal-Dirt/Water, Hi Temp ●■	28	126-2956	1	Screw-HHF 3/8-16 X 2 1/4
3:1:4		1	Seal-Shaft ●■	29	126-2954	1	Pivot, Idler
4	142-8577	1	Motor, T1240 RH	30	52-2861	2	Washer
4:1	130-1788	1	Seal Kit	31	142-8149	1	Belt- Cog A 54
4:1:1		5	Seal-Ring, Viton ●■	32	126-1248	1	ASM, HYD Reservoir
4:1:2		1	Seal-Commutator ●■	32:1		1	Reservoir-HYD ■
4:1:3		1	Seal-Dirt/Water, Hi Temp ●■	32:1:1	103-1948	1	Cap-Reservoir, HYD
4:1:4		1	Seal-Shaft ●■	32:1:2	142-2792	1	O-Ring
5	3232-3	4	Bolt-Carriage 7/16-14 X 1 1/2	32:2	115-4212	1	Decal-Warning
6	114-8417	4	Nut-Hex Flange 7/16-14	33	103-1807	2	Fitting-Barbed, 45 DEG
7	100-4887	4	Fitting-Elbow, 90	33:1	237-42	1	O-Ring
7:1	237-42	1	O-Ring	34	103-2888	1	Head-Filter
8	103-1988	8	Clamp-Hose 11/16	35	3234-13	2	Screw-HH Flg 1/4-20 X 1/2
9	126-2927	2	Fitting-90 DEG	36	109-4180	1	Element, Oil Filter
9:1	237-42	1	O-Ring	37	32180-030	2	Clip-Tie
10	116-1946	1	Sheave-Pump, Drive	38	142-7809	1	ASM-Hydraulic Lo-Pres
11	135-7971	2	Key-5Mm X 5Mm X 29Mm	38:1	142-6776	2	Hose, LP Hydro
12	142-6433	2	Sheave-Pump	38:2	142-6775	1	Hose, LP Hydro
13	142-8011	2	Washer-1.00 OD X .25 ID	39	142-7810	1	ASM-Hydraulic Lo-Pres
14	1-323235	2	Washer-Spring	39:1	142-6773	2	Hose, LP Hydro
15	142-8012	2	Screw-HHF M6-1 X 20Mm W/Patch Lock	39:2	142-6772	1	Hose, LP Hydro
16	18-3209	2	Wheel Hub/Stud ASM	40	142-6771	1	Hose, LP Hydro
16:1	10-6870-03	1	Hub-Wheel	41	126-0423	1	Pin-Spring, Anchor
16:2	10-6830	4	Stud-Type, Drive	42	104-8301	1	Nut-Nyloc 3/8-16 Flg
17	340-4	4	Fitting-Straight	43	116-1399	2	Nut-Slotted 1-20 Unef-3B Gr8
17:1	237-30	1	O-Ring	44	1-303287	4	Tie-Cable 5 1/2 (Small)
17:2	237-79	1	O-Ring	45	137-4795	2	Screw
18	340-89	4	Fitting-HYD, 45 DEG	46	3234-4	2	Screw-HH Flg 1/4-20 X 3/4
18:1	237-30	1	O-Ring	47	32128-32	2	Nut-Hex 1/4-20 Side Lock
				49	99-5107	8	Nut-Lock 1/2-13
				50	1-807259	1	Key-Machine 1/4 X 1/4 X 1

● Not illustrated

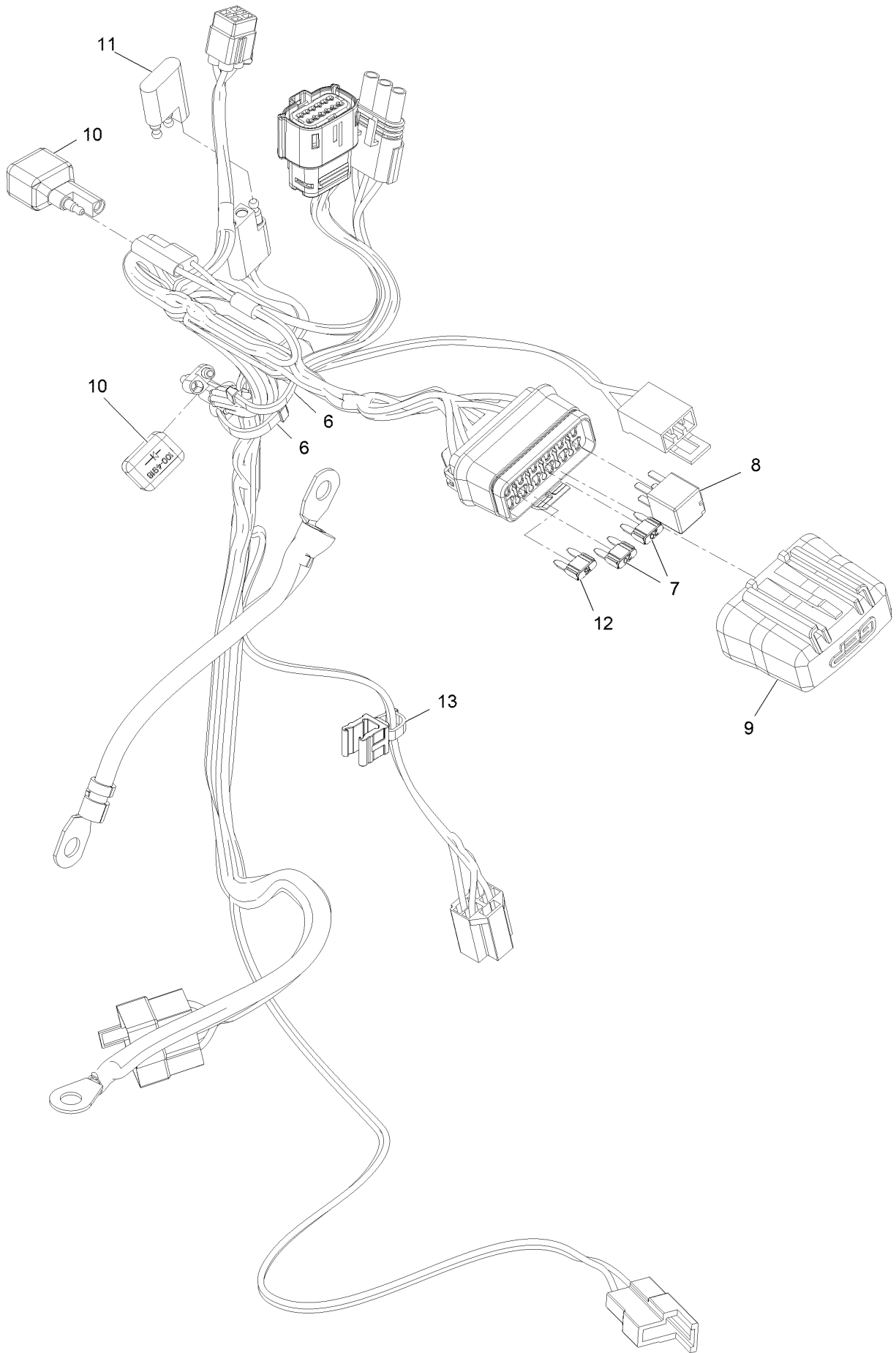
■ Not serviced separately

Electrical Assembly (continued)

<i>Ref.</i>	<i>Part Number</i>	<i>Qty.</i>	<i>Description</i>	<i>Ref.</i>	<i>Part Number</i>	<i>Qty.</i>	<i>Description</i>
1	142-7401	1	Module-Hour Meter	9:4	AU21001545	1	Boot-Battery, Red
2	126-6285	1	Ignition Switch ASM	11	3234-5	4	Screw-HH Flg 5/16-18 X 3/4
2:2	108-8660	1	Nut-Mounting	12	32128-20	2	Nut-Whizlock 5/16-18
2:3	106-5270	1	Ignition Key Set	13	1-633181	1	Plate-Tapped
2:4	108-8659	1	Washer-Backup	14	3290-500	2	Screw-PPH #10-24 X 5/8
3	126-6187	1	Switch-PTO, Sealed	15	32180-030	1	Clip-Tie
4	99-7407	1	Switch	16	1-643267	1	Indicator-Red LED
5	82-2190	1	Switch	17	142-8461	1	Harness-Indicator Light, EFI
7	126-0624	1	Harness-Clutch Pigtail	18	3290-378	4	Tie-Cable
8	142-6462	1	Harness-Wiring ●	19	32180-078	1	Clip-Edge
9	142-6765	1	Harness-Battery	20	104-8300	2	Nut-Nyloc 5/16-18 Flg
9:3	32180-008	1	Insulator-Lug, Red				

● Use dielectric grease on all unsealed connectors and terminals only. Do not apply in sealed connectors.

Harness Assembly



Harness Assembly (continued)

<i>Ref.</i>	<i>Part Number</i>	<i>Qty.</i>	<i>Description</i>	<i>Ref.</i>	<i>Part Number</i>	<i>Qty.</i>	<i>Description</i>
6	32180-030	2	Clip-Tie	11	32180-197	1	Cap-Plug
7	121-8868	2	Fuse-Mini Blade, 20 Amp	12	121-8867	1	Fuse-Mini Blade, 15 Amp
8	126-3991	1	Relay-Micro	13	32180-082	1	Clip-Edge W/Tie, Perpendicular
9	32180-176	1	Cover-Block, Fuse				
10	100-4918	2	Diode				

Notes:

Notes:

Notes:



MAXIMIZE THE PERFORMANCE OF YOUR EXMARK MACHINE.



EXMARK® PREMIUM ENGINE OIL

Exmark now offers a family of engine oil viscosities to perform well in any environment. Each viscosity has the same synthetic formulation to give you what you need in punishing conditions. We designed each grade to the highest quality, making it ideal even for diesel applications. Coupled with Exmark Premium Fuel Treatment, we have the performance products to make your machine hum.

EXMARK PREMIUM ENGINE OIL SAE 30/10W-30

- Meets zero shear requirements of a straight grade SAE 30 as well as the cold temp properties of a 10W-30.
- Most versatile oil in the industry.
- Superior corrosion protection over conventional oil - even in corrosive, humid environments.

EXMARK PREMIUM ENGINE OIL SAE 20W-50

- Perfect for your big block engine, or any application in severe service.
- Same full synthetic formulation as all other Exmark Premium viscosities.
- Also effective for use in severe service small block engines.

EXMARK PREMIUM ENGINE OIL SAE 10W-50

- Full synthetic formulation gives you peak performance. Don't settle for less.
- Wide span multi-grade combines easy starting in cold weather with maximum protection in high temperature operation.
- Reduce friction & wear over standard mineral formulations.

EXMARK PREMIUM ENGINE OIL SAE 0W-40

- The perfect choice for when the weather turns cold or unpredictable, and your Exmark UTV has to perform.
- Commercial quality for severe service.
- Advanced additive package helps prevent corrosion from long-term storage.

EXMARK PREMIUM ENGINE OIL UTV FORMULATION

- 4-cycle high-temp formulation.
- Heavier viscosity, full synthetic, perfect for your UTV.

EXMARK PREMIUM UTV EXTREME CONDITIONS GEAR OIL

- SAE 80W-90, designed to keep your UTV performing at its peak.
- Shear stable, hypoid gear lube.
- Includes a premium additive system to combat wear, oxidation, rust & corrosion.

Available from your local Exmark dealer. Find your closest dealer at exmark.com

Notes: