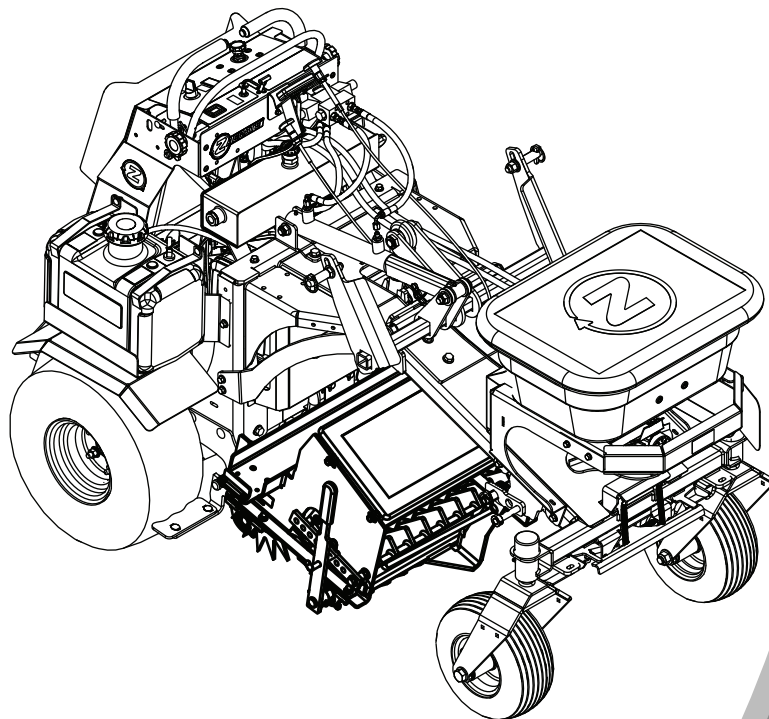




# **SLICER SEEDER 36 INCH**

**Model No. 142-2038—Serial No. 413950474 and Up**

Picture below may not reflect actual product.



# **Parts Manual**

Part No. 4506-399 Rev. A

# Ordering Replacement Parts

To order replacement parts, please supply the part number, the quantity, and the description of each part desired.

## Understanding Reference Numbers

Each identified part in an illustration has a reference number. The reference number for a part also appears in the parts list, along with other information about the part.

This catalog uses two special reference number formats, one to indicate parts in a service assembly and another to indicate the quantity of a given part in an illustration.

## Service Assembly Reference Numbers

Parts in service assemblies have reference numbers in the form a:b. The a represents the reference number of the entire service assembly and the b represents a sequential number unique to each part within the service assembly.

For example, a wheel assembly might be identified by reference number 6, the tire by 6:1, the valve by 6:2, and the wheel by 6:3. When you order the assembly identified by reference number 6, you receive all parts identified by reference numbers 6:1, 6:2, and 6:3. However, you may also order any part individually. Reference numbers of this type appear in illustration and in parts lists.

## Reference Numbers Indicating Quantity

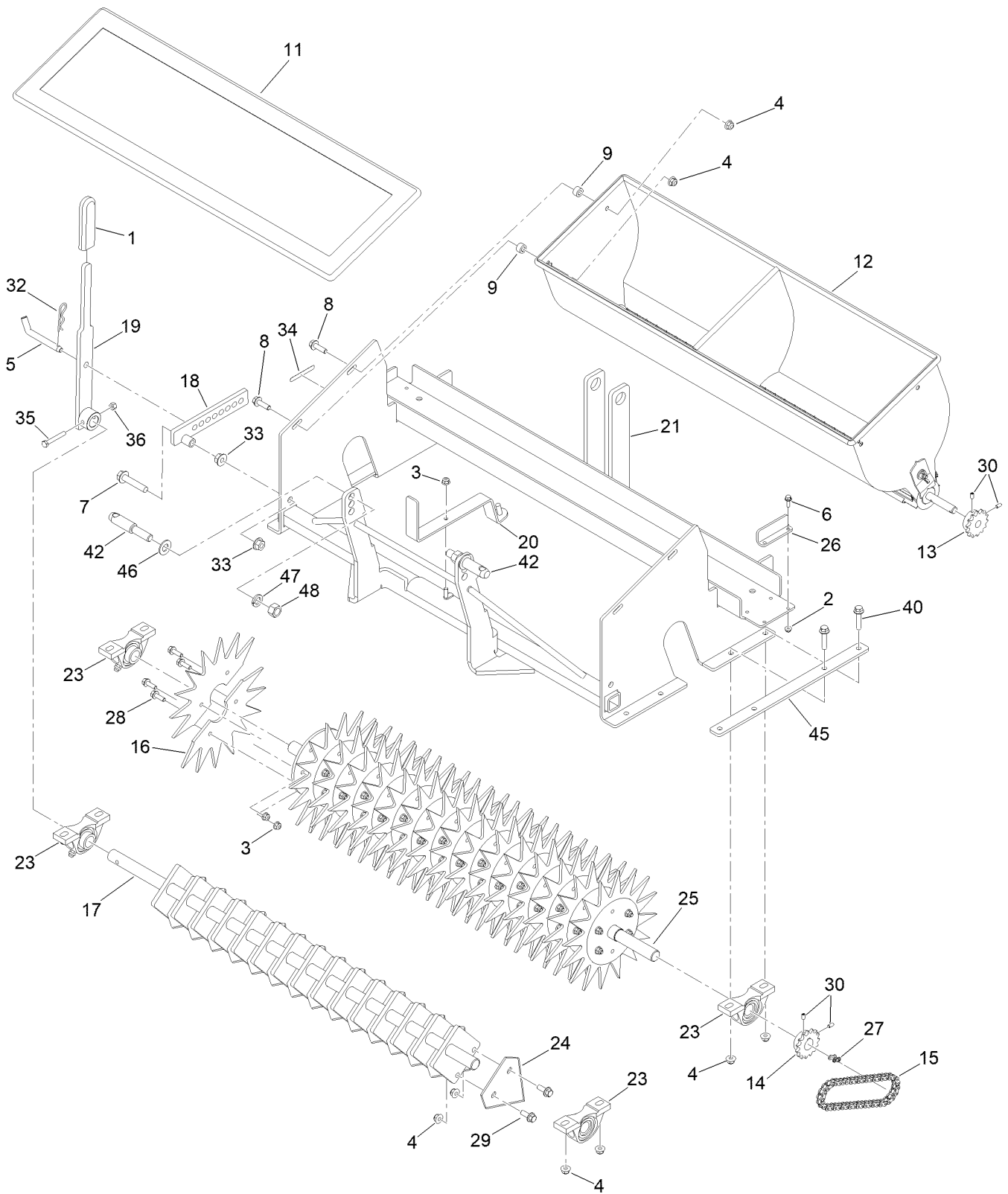
In an illustration, if a reference number indicates more than one part, the reference number has the form nX y. The n represents the quantity of the part, the X is the multiplication symbol, and the y represents the reference number.

For example, in an illustration, the reference number 2X 37 means that two of the parts identified by reference number 37 are indicated.

# Contents

Seeder Hopper Assembly .....	4
Seeder Hopper Assembly .....	6

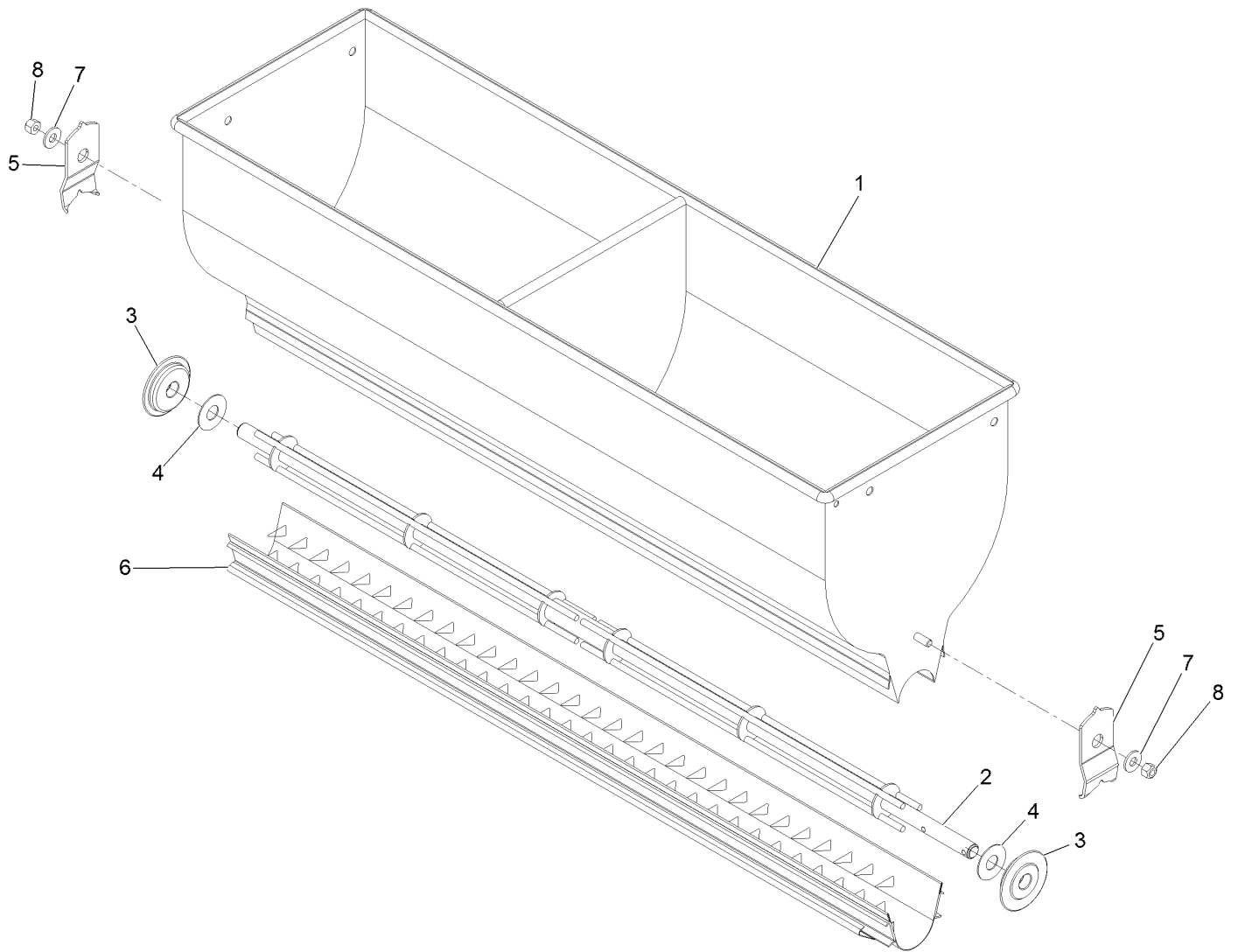
# Seeder Hopper Assembly



## Seeder Hopper Assembly (continued)

<i>Ref.</i>	<i>Part Number</i>	<i>Qty.</i>	<i>Description</i>	<i>Ref.</i>	<i>Part Number</i>	<i>Qty.</i>	<i>Description</i>
1	1-633268	1	Grip-Lever	23	135-9379	4	Bearing-Pillow Block
2	104-7201	4	Nut-Nyloc 1/4-20 Flg	24	135-9405	15	Knife-Slicing, 4 Inch
3	104-8300	65	Nut-Nyloc 5/16-18 Flg	25	142-0263-05	1	Disc-Slit, Seeder
4	104-8301	42	Nut-Nyloc 3/8-16 Flg	26	142-1650-05	2	Bracket-Weight
5	135-9413	1	Pin-Bent	27	2710-11	1	Link-Chain
6	120-9678	4	Screw-HHF 1/4-20 X 3/4	28	3234-29	64	Screw-HH Flg 5/16-18 X 1
7	127-7444	1	Screw-HHF	29	3234-42	30	Screw HHF 3/8-16 X 1
8	119-4061	4	Screw-HHF 3/8-16 X 1 1/4	30	3245-9	4	Screw-Set, HSH
9	135-7040	4	Bushing-Hopper	32	3290-355	1	Pin-Hair
11	135-8482	1	Slit Seeder Drop Cover	33	32128-49	2	Nut-Whizlock 1/2-13
12	135-8544	1	Hopper-36 In. Seeder	34	133-8061	1	Decal-Warning
13	135-8546	1	Sprocket-15T	35	322-11	1	Screw-HH 5/16-18 X 2 1/4
14	135-8547	1	Sprocket-15T	36	3296-29	1	Nut-Nyloc 5/16-18
15	135-8549	1	Chain-Roller	40	3234-19	8	Screw-HHF 3/8-16 X 1 3/4
16	135-9312-05	32	Star-Slit, Seeder	42	142-3075	2	Pin-Lift
17	135-9322-05	1	Shaft-Plate, Sq	45	142-3007-05	2	Plate-Doubler
18	135-9325-05	1	Arm-Control, Seeder	46	3256-27	2	Washer-5/8 SAE
19	135-9327-05	1	Handle-Slit, Seeder	47	3253-8	2	Washer-Lock 5/8
20	135-9329-05	1	Handle-Gate	48	3219-6	2	Nut-Hex 5/8-18
21	135-9349-05	1	Frame-Seeder, Slit				

# Seeder Hopper Assembly



## Seeder Hopper Assembly (continued)

<i>Ref.</i>	<i>Part Number</i>	<i>Qty.</i>	<i>Description</i>
1	135-7033	1	Hopper-36 In Seeder
2	135-7034	1	Rotor-Bar 36 In Seeder
3	135-7035	2	Bearing-End Hopper
4	135-7036	2	Washer

<i>Ref.</i>	<i>Part Number</i>	<i>Qty.</i>	<i>Description</i>
5	135-7039	2	Retainer-End Bearing
6	135-7484	1	Slide-Metering Gate
7	3256-3	2	Washer-5/16 Std
8	1-513959	2	Wingnut-Nylock

Place Model No. and Serial No.  
Label Here (Included in the Literature  
Pack) or Fill in Below

Model No. \_\_\_\_\_

Serial No. \_\_\_\_\_

Date Purchased \_\_\_\_\_

Engine Model No. and Spec. No. \_\_\_\_\_

Engine Serial No. (E/No) \_\_\_\_\_



Z Turf Equipment is part of the Exmark® family of products.  
©2023 Exmark Mfg. Co., Inc. All Rights Reserved. Printed in the USA.  
415 Industrial Row • Beatrice, NE 68310 • (402) 223-6300

[www.zturfequipment.com](http://www.zturfequipment.com)

