



17-44HXLE Wheel Horse® Lawn Tractor

Model No. 71282—Serial No. 210000001 and Up

Model No. 71283—Serial No. 210010001 and Up

Form No. 3324-822 Rev A

Setup Instructions

Loose Parts

Note: Use the chart below to verify that all parts have been shipped.

Description	Qty.	Use
Front wheel	2	Installing the front wheels
Shim washer (as required)	2	
Flat washer	2	
Cotter pin	2	
Hub cap	2	
Spacer	2	Installing the rear wheels
Shim washer (as required)	2	
Rear wheel	2	
Square key	2	
Flat washer	4	
E-ring	2	
Hub cap	2	
Steering wheel	1	Installing the steering wheel
Spirol pin	1	
Seat	1	Installing the seat
Knob	1	
Flat washer	1	
Wire clip (on seat pin)	1	
Bolt, 1/4 x 3/4 in.	2	Installing the battery cables
Wing nut	2	
Spring hook	1	Installing the lift assist spring
Key	2	Use in the ignition and KeyChoice® switches.
Operator's Manual	1	Read before operating the tractor.
Engine operator's manual	1	
Certificate of Conformance	1	
Noise certificate	1	
Registration card	1	Fill out and mail the card.

Installing the Front Wheels

Note: If the wheels are already installed, refer to Checking the Tire Pressure (below).

1. Install the shim washers onto the axle.
2. Install the wheel onto the axle with the valve stem facing out.
3. Slide the flat washer onto the axle. Insert the cotter pin through the axle and bend the ends of the pin apart (Fig. 1). If the cotter pin does not fit, remove the shim washer(s) as required.
4. Push the hub cap (Fig. 1) onto the end of the axle.

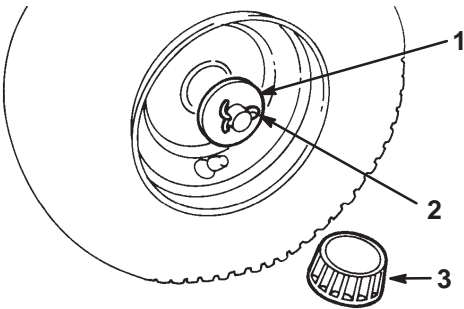


Figure 1

1. Flat washer
2. Cotter pin
3. Hub cap

5. Repeat steps 1 through 4 on the opposite side of the tractor.
6. Grease the wheel bearings until grease comes out of the bearing seal area.

Installing the Rear Wheels

1. Grease the axle to prevent corrosion.
2. Slide a flat washer, spacer, and shim washer onto the axle (Fig. 2).
3. Slide the wheel onto the axle. Make certain that the valve stem is facing out (Fig. 2).
4. Slide the key into the keyway of the axle and wheel hub (Fig. 2).
5. Slide another flat washer onto the axle and secure it with the E-ring (Fig. 2). If the E-ring does not fit, remove the shim washer.
6. Press the hub cap over the washer (Fig. 2).

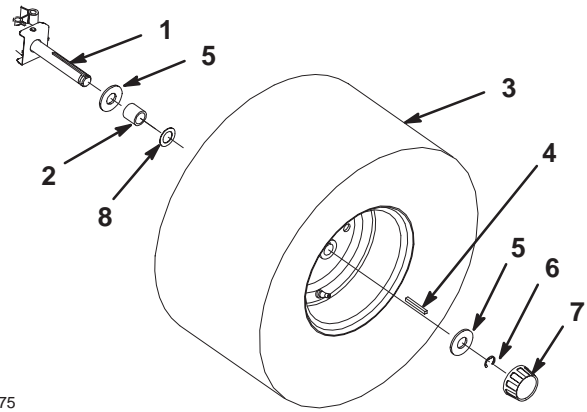


Figure 2

1. Axle
2. Spacer
3. Wheel
4. Key
5. Flat washer
6. E-ring
7. Cap
8. Shim washer

Checking the Tire Pressure

Check the front and rear tires for proper inflation. Refer to Tire Pressure in the Operator's Manual for the recommended inflation pressure.

Installing the Steering Wheel

1. Turn the front wheels so that they are facing straight ahead.
2. Slide the steering wheel over the steering shaft. Line up the hole in the steering wheel with the hole in the shaft (Fig. 3). From the seat you should be able to read the brand logo on the steering wheel.
3. To align the holes, insert a punch or long nail partially through the holes in the steering wheel and shaft. Then insert the spirol pin into the hole on the opposite side.
4. Using a hammer, drive the spirol pin in until it is flush with the outside of the steering wheel (Fig. 3).

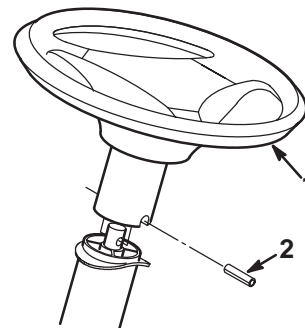


Figure 3

1. Steering wheel
2. Spirol pin

Installing the Seat

Note: If the seat is already installed, proceed to Activating the Battery, page 3.

1. Insert the seat switch wire cable through the hole in the seat base (Fig. 4).
2. Position the seat onto the seat base by inserting the two shoulder bolts through the key hole openings at the end of both slots (Fig. 4).
3. Thread the knob and flat washer through the slot and into the rear center hole in the seat (Fig. 4). Adjust the seat and tighten the knob.
4. Push the seat switch connector fully into the wire harness connector (Fig. 4).
5. Secure the seat switch wire cable to the seat base with the wire clip (Fig. 4).

Note: Check the seat switch wire routing. The wire must not be pinched in the seat brackets.

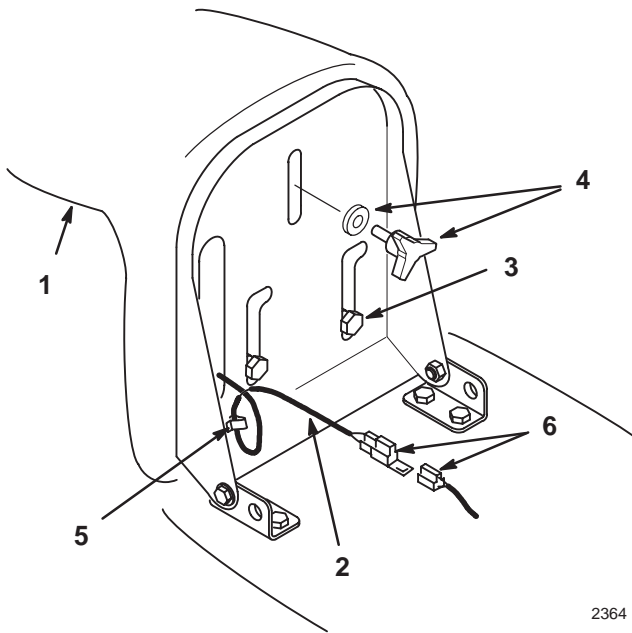


Figure 4

- | | |
|-----------------------|-------------------------|
| 1. Seat | 4. Knob and flat washer |
| 2. Wire and connector | 5. Wire clip |
| 3. Shoulder bolts | 6. Connectors |

Activating the Battery



Warning



Battery posts, terminals, and related accessories contain lead and lead compounds, chemicals known to the State of California to cause cancer and reproductive harm. Wash hands after handling.

Bulk electrolyte with 1.260 specific gravity must be purchased from a local battery supply outlet.

Important Never fill the battery with electrolyte while the battery is installed in the tractor. Electrolyte could be spilled on other parts and cause corrosion.

1. Remove the battery and battery box from the tractor; refer to the Operator's Manual, Removing the Battery.



Danger



Battery electrolyte contains sulfuric acid which is a deadly poison and causes severe burns.

- Do not drink electrolyte and avoid contact with skin, eyes or clothing. Wear safety glasses to shield your eyes and rubber gloves to protect your hands.
- Fill the battery where clean water is always available for flushing the skin.
- Follow all instructions and comply with all safety messages on the electrolyte container.

2. Remove the vent caps from the battery. Slowly pour electrolyte into each battery cell until the electrolyte level is up to the Upper line on the battery case (Fig. 5).

Important Do not overfill the battery because electrolyte (sulfuric acid) can cause severe corrosion and damage to the chassis.

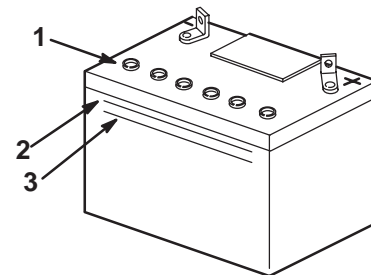


Figure 5

- | | |
|---------------|---------------|
| 1. Vent caps | 3. Lower line |
| 2. Upper line | |

m-5004

3. Wait five to ten minutes after filling the battery cells. Add electrolyte, if necessary, until the electrolyte level is up to the Upper line (Fig. 5) on the battery case.
4. Reinstall the battery vent caps.
5. Charge the battery for 1 hour at 25 to 30 amps or 6 hours at 4 to 6 amps (Fig. 6). Do not overcharge the battery.

Warning

Charging the battery produces gasses that can explode.

Never smoke near the battery and keep sparks and flames away from battery.

6. When the battery is fully charged, unplug the charger from the electrical outlet, then disconnect the charger leads from the battery posts (Fig. 6).

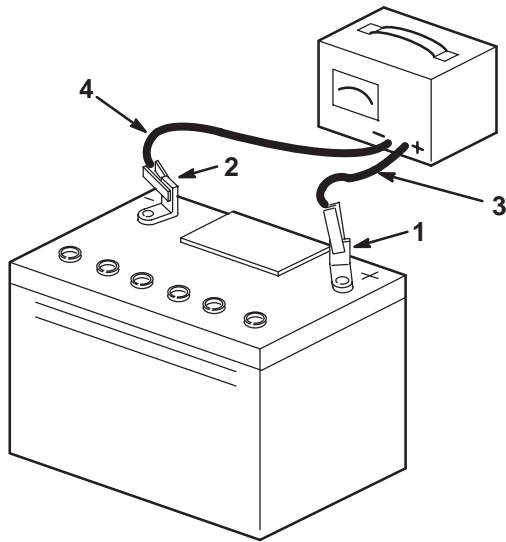


Figure 6

- | | |
|------------------|---------------------------|
| 1. Positive post | 3. Charger red (+) wire |
| 2. Negative post | 4. Charger black (-) wire |

7. Install the battery and battery box in the tractor and connect the battery cables; refer to the Operator's Manual, Installing the Battery.

Checking the Oil Level

The tractor is shipped from the factory with oil in the engine crankcase; however, it may be necessary to add oil. Refer to the Operator's Manual, Engine Oil Specifications, for oil type, viscosity, and crankcase capacity. Add only enough oil to raise the level to the Full mark on the dipstick.

Lubricating the Tractor

Make sure all of the necessary points on the tractor are lubricated; refer to Greasing and Lubrication in the Operator's Manual.

Checking the Safety System

Refer to the Operator's Manual, Testing the Safety System.

Purging the Hydro Transaxle

During shipping and handling air can be introduced into the hydro transaxle. To achieve proper performance, all trapped air must be removed.

1. Place the tractor on a flat, level surface.
2. Place the drive control in the Push position (Fig. 7).

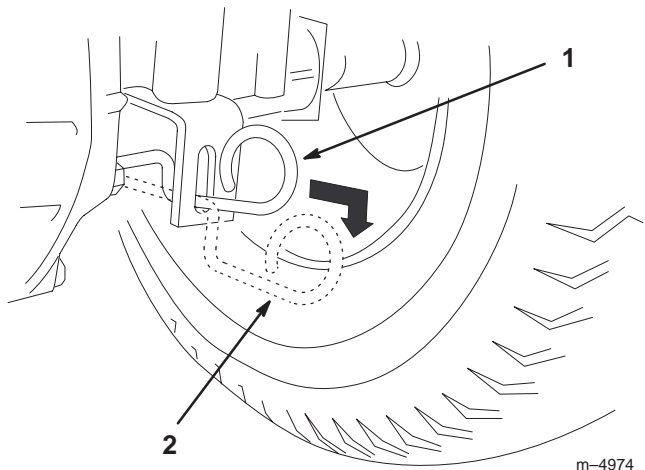


Figure 7

- | | |
|---------------------|------------------|
| 1. Operate position | 2. Push position |
|---------------------|------------------|

3. Run the engine at a low idle and move the traction control pedal forward for five seconds then reverse for five seconds. Repeat three times.
4. Place the drive control in the Operate position (Fig. 7). Drive the tractor forward then reverse approximately five feet. Repeat three times.

Checking the Hydro Neutral Position

Ensure that the neutral position is set properly. An adjustment is required if the tractor moves without the traction control pedal being depressed.

1. Run the engine at a low idle and move the traction control pedal forward, then release. Move the traction control pedal to reverse, then release. If the tractor moves, proceed as follows:
2. Run the tractor for 5 to 10 minutes to warm the transaxle.
3. Disengage the PTO, set the parking brake, stop the engine, and remove the ignition key.
4. Raise the right rear wheel off of the ground and support it with a jack stand. Make sure that the left rear wheel stays on the ground.

Danger

Mechanical or hydraulic jacks may fail to support the machine and cause a serious injury.

- Use jack stands when supporting the machine.
- Do not use hydraulic jacks.

Note: To gain access to the adjusting puck (Fig. 8), it may be necessary to remove the tire.

5. Loosen the adjusting puck screw (Fig. 8).
6. Start the engine and run it at full throttle.
7. Rotate the adjusting puck (Fig. 8) in both directions until you find the midpoint where the axle no longer rotates forward or reverse.
8. Hold the puck with an adjustable wrench so that it will not move; then tighten and torque the adjusting puck screw to 21 to 27 ft.-lb. (28 to 36 N·m).
9. Stop the engine and remove the ignition key. Lower the tractor from the jack stand.
10. Check the adjustment again by repeating step 1.

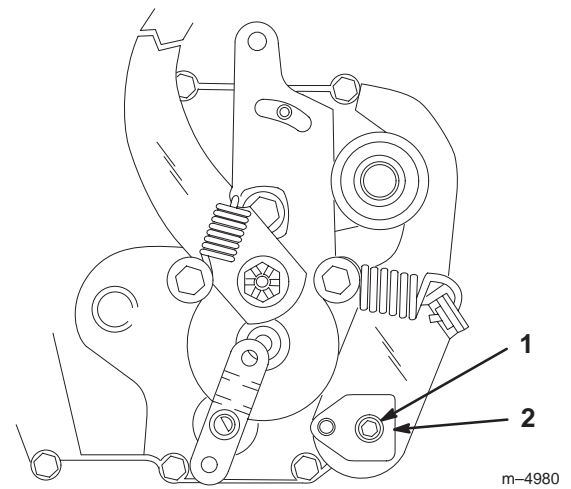


Figure 8

1. Adjusting puck screw
2. Adjusting puck

Checking the Traction Control Pedal

The traction control pedal can be adjusted for optimum forward and reverse speeds.

1. Loosen the screws below the right footrest. Slide the pedal forward for faster reverse speed or backward for faster forward speed (Fig. 9).
2. Tighten the screws and recheck the traction control pedal.

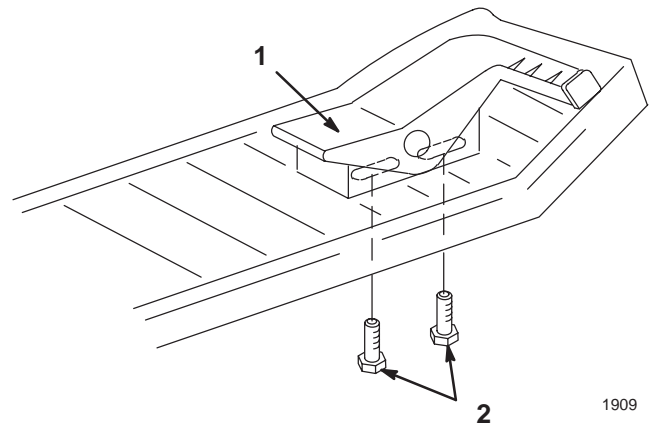


Figure 9

1. Traction control pedal
2. Adjusting screws

Test Drive the Tractor

Make sure that all electrical and mechanical systems are operating properly. See the Operator's Manual for proper control function.

