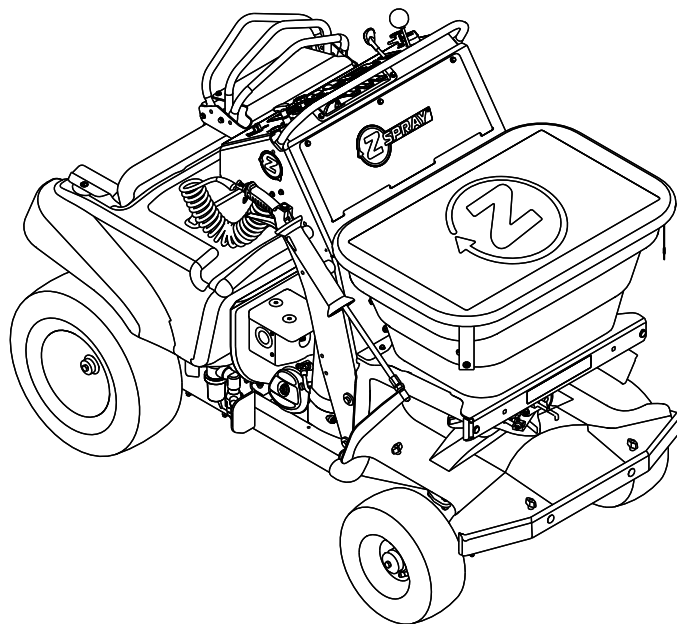




Z-SPRAY® LTS

Model No. ZSL3620—Serial No. 413950474 and Up

Picture below may not reflect actual product.



Parts Manual

Part No. 4506-460 Rev. A

Ordering Replacement Parts

To order replacement parts, please supply the part number, the quantity, and the description of each part desired.

Understanding Reference Numbers

Each identified part in an illustration has a reference number. The reference number for a part also appears in the parts list, along with other information about the part.

This catalog uses two special reference number formats, one to indicate parts in a service assembly and another to indicate the quantity of a given part in an illustration.

Service Assembly Reference Numbers

Parts in service assemblies have reference numbers in the form a:b. The a represents the reference number of the entire service assembly and the b represents a sequential number unique to each part within the service assembly.

For example, a wheel assembly might be identified by reference number 6, the tire by 6:1, the valve by 6:2, and the wheel by 6:3. When you order the assembly identified by reference number 6, you receive all parts identified by reference numbers 6:1, 6:2, and 6:3. However, you may also order any part individually. Reference numbers of this type appear in illustration and in parts lists.

Reference Numbers Indicating Quantity

In an illustration, if a reference number indicates more than one part, the reference number has the form nX y. The n represents the quantity of the part, the X is the multiplication symbol, and the y represents the reference number.

For example, in an illustration, the reference number 2X 37 means that two of the parts identified by reference number 37 are indicated.

Contents

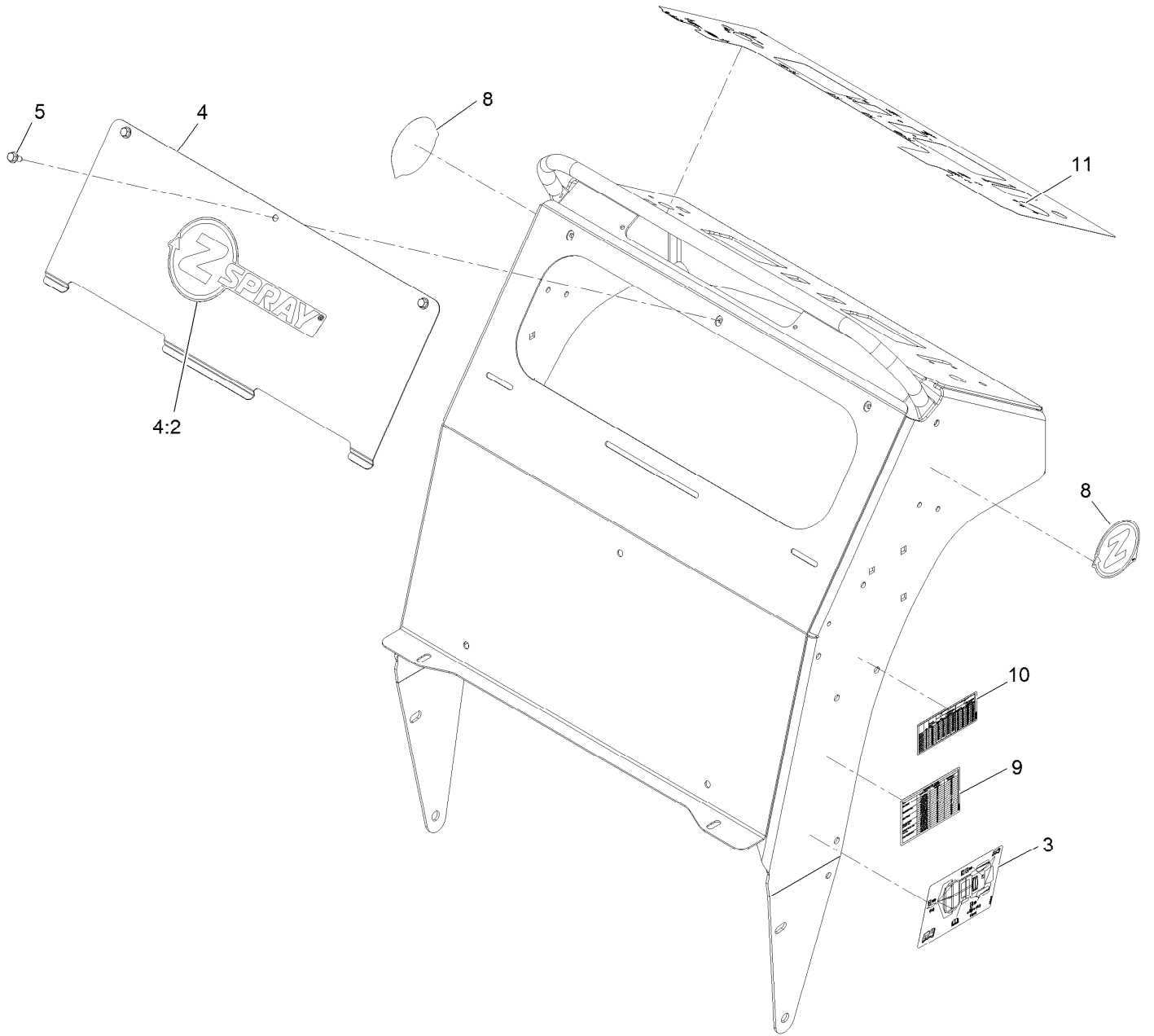
| | |
|--|----|
| Main Frame Assembly | 4 |
| Control Tower W/Decals Assembly | 6 |
| Knee Pad Assembly | 8 |
| Steering Assembly | 10 |
| Steering Linkage Assembly No. 126-7185 | 12 |
| Spray System Assembly | 14 |
| Sprayer Tank Assembly | 16 |
| Strainer Assembly | 18 |
| Control Valve Manifold and Hose Assembly | 20 |
| Control Valve Manifold Assembly | 22 |
| Left Nozzle Assembly No. 126-3667 | 24 |
| Right Nozzle Assembly No. 126-3669 | 26 |
| Center Nozzle Assembly No. 126-3668 | 28 |
| Spreader Assembly | 30 |
| Spreader Hopper Assembly | 32 |
| Side Deflector Assembly | 34 |
| Engine Assembly | 36 |
| Ground Drive Assembly | 38 |
| Transaxle Cover Assembly No. 126-1462 | 40 |
| Electrical Assembly | 42 |

Main Frame Assembly (continued)

| <i>Ref.</i> | <i>Part Number</i> | <i>Qty.</i> | <i>Description</i> | <i>Ref.</i> | <i>Part Number</i> | <i>Qty.</i> | <i>Description</i> |
|-------------|--------------------|-------------|------------------------------------|-------------|--------------------|-------------|------------------------------------|
| 1 | 142-2788 | 1 | Frame ASM | 11 | 114-1926 | 2 | Bumper-Rubber |
| 1:2 | 126-3008 | 2 | Bearing-Flanged | 12 | 126-0435 | 1 | Operator Platform ASM |
| 1:3 | 126-3002 | 2 | Bearing-Flanged | 13 | 126-0434 | 2 | Bushing-Pivot, Platform |
| 1:4 | 126-4994 | 1 | Decal-Down, Tie | 14 | 126-0702 | 2 | Bolt-Carriage 3/8-16 X 2 1/2 SS |
| 2 | 142-7688 | 1 | Control Tower ASM | 15 | 114-5348 | 1 | Spring |
| 3 | 126-3875 | 4 | Washer | 16 | 119-8650 | 1 | Pin-Latch |
| 4 | 126-2661 | 4 | Screw-HH 3/8-16 X 3 1/4 SS | 17 | 1-603175 | 1 | Knob-Ball |
| 5 | 135-2882 | 6 | Nut-Hex Flg 3/8-16 SS W/Patch | 18 | 126-1234-03 | 1 | Mount-Pad, Knee |
| 6 | 32144-10 | 2 | Screw-HWH 1/4-20 X .62 | 19 | 119-1730 | 2 | Receptacle-Clip, Mini |
| 7 | 126-1415 | 1 | Guard-Lower | 20 | | 1 | ASM-Pad ● |
| 8 | 126-0695 | 8 | Screw-Carriage 5/16-18 X 3/4 SS | 21 | 126-2567 | 1 | Shield-Dust |
| 9 | 135-2881 | 12 | Nut-Hex Flg 5/16-18 SS W/Patch | 22 | 237-164 | 2 | Grommet |
| 10 | 114-1925 | 2 | Bumper-Rubber | 23 | 240-5 | 2 | Grommet |
| | | | | 26 | 126-5147 | 2 | Plug-Tube |

● Not serviced separately

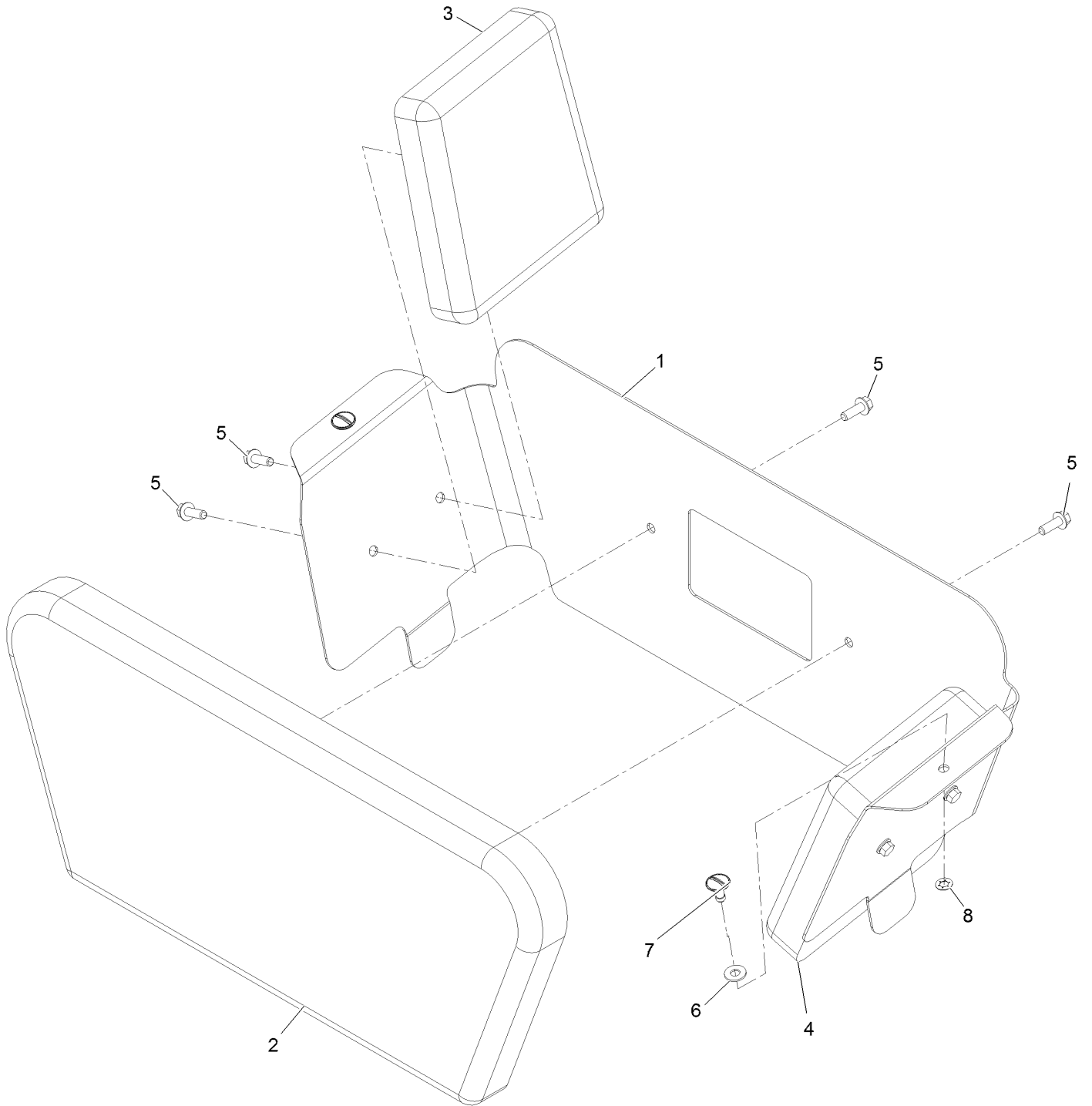
Control Tower W/Decals Assembly



Control Tower W/Decals Assembly (continued)

| <i>Ref.</i> | <i>Part Number</i> | <i>Qty.</i> | <i>Description</i> | <i>Ref.</i> | <i>Part Number</i> | <i>Qty.</i> | <i>Description</i> |
|-------------|--------------------|-------------|------------------------|-------------|--------------------|-------------|--------------------|
| 3 | 126-5186 | 1 | Decal-Service Aid | 8 | 142-3051 | 2 | Decal-Z-Logo |
| 4 | 142-2758 | 1 | Access Panel W/ Decal | 9 | 142-2770 | 1 | Decal-Spread Chart |
| 4:2 | 142-3053 | 1 | Decal-Z-Spray | 10 | 142-2769 | 1 | Decal-Spray Chart |
| 5 | 32144-10 | 3 | Screw-HWH 1/4-20 X .62 | 11 | 146-0563 | 1 | Decal-Control |

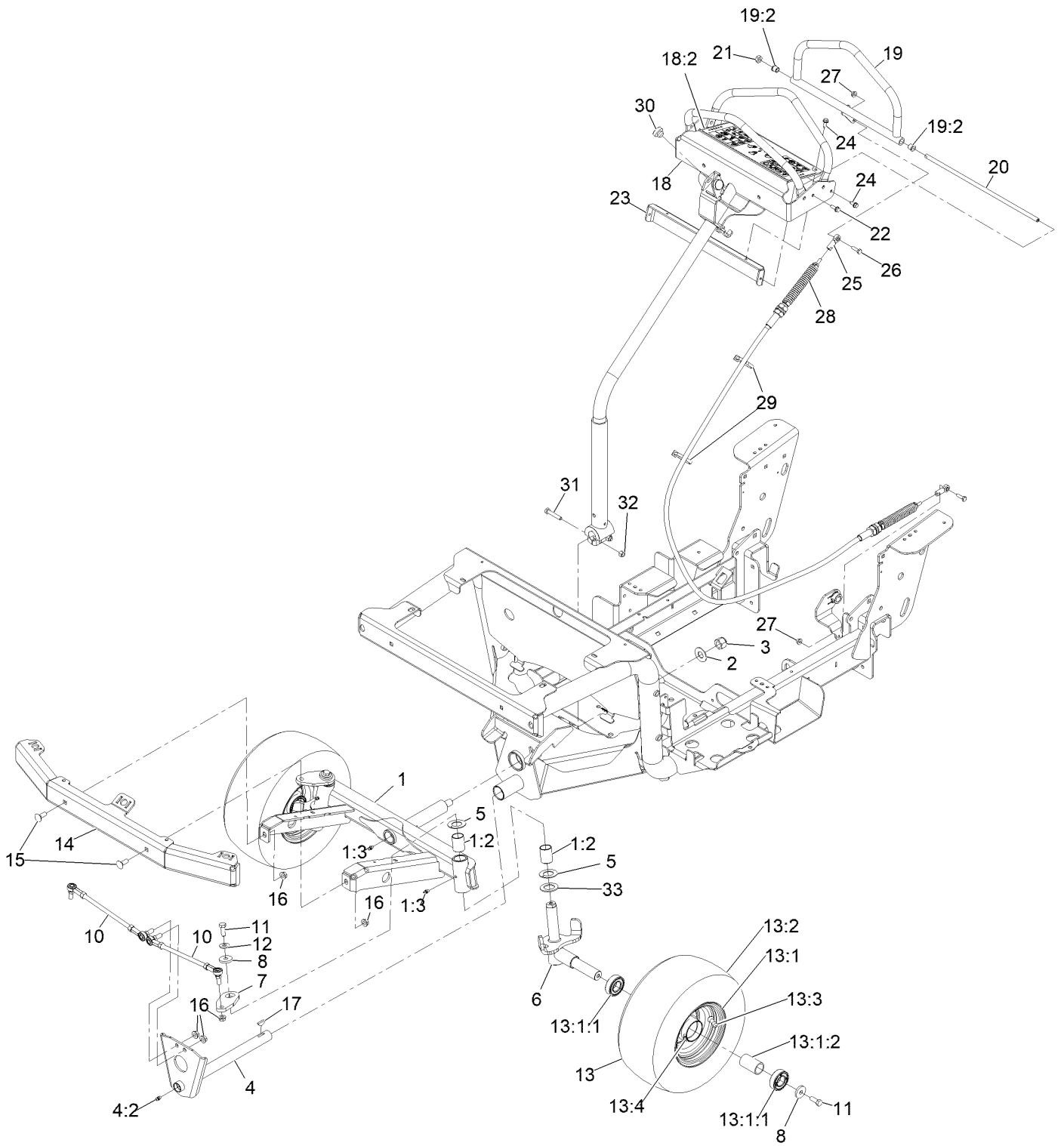
Knee Pad Assembly



Knee Pad Assembly (continued)

| <i>Ref.</i> | <i>Part Number</i> | <i>Qty.</i> | <i>Description</i> | <i>Ref.</i> | <i>Part Number</i> | <i>Qty.</i> | <i>Description</i> |
|-------------|--------------------|-------------|----------------------------------|-------------|--------------------|-------------|--------------------|
| 1 | 126-1244-03 | 1 | Bracket-Pad, Knee | 6 | 360-0140 | 2 | Washer-Flat |
| 2 | 142-2751 | 1 | Pad-Knee, Center | 7 | 119-1728 | 2 | Stud-1/4 Turn |
| 3 | 126-1250 | 1 | Pad-Knee, LH Side | 8 | 119-1729 | 2 | Retainer-Stud |
| 4 | 126-2773 | 1 | Pad-Knee, RH Side | | | | |
| 5 | 117-8304 | 6 | Screw-Hex Flange 1/4-20 X 3/4 | | | | |

Steering Assembly

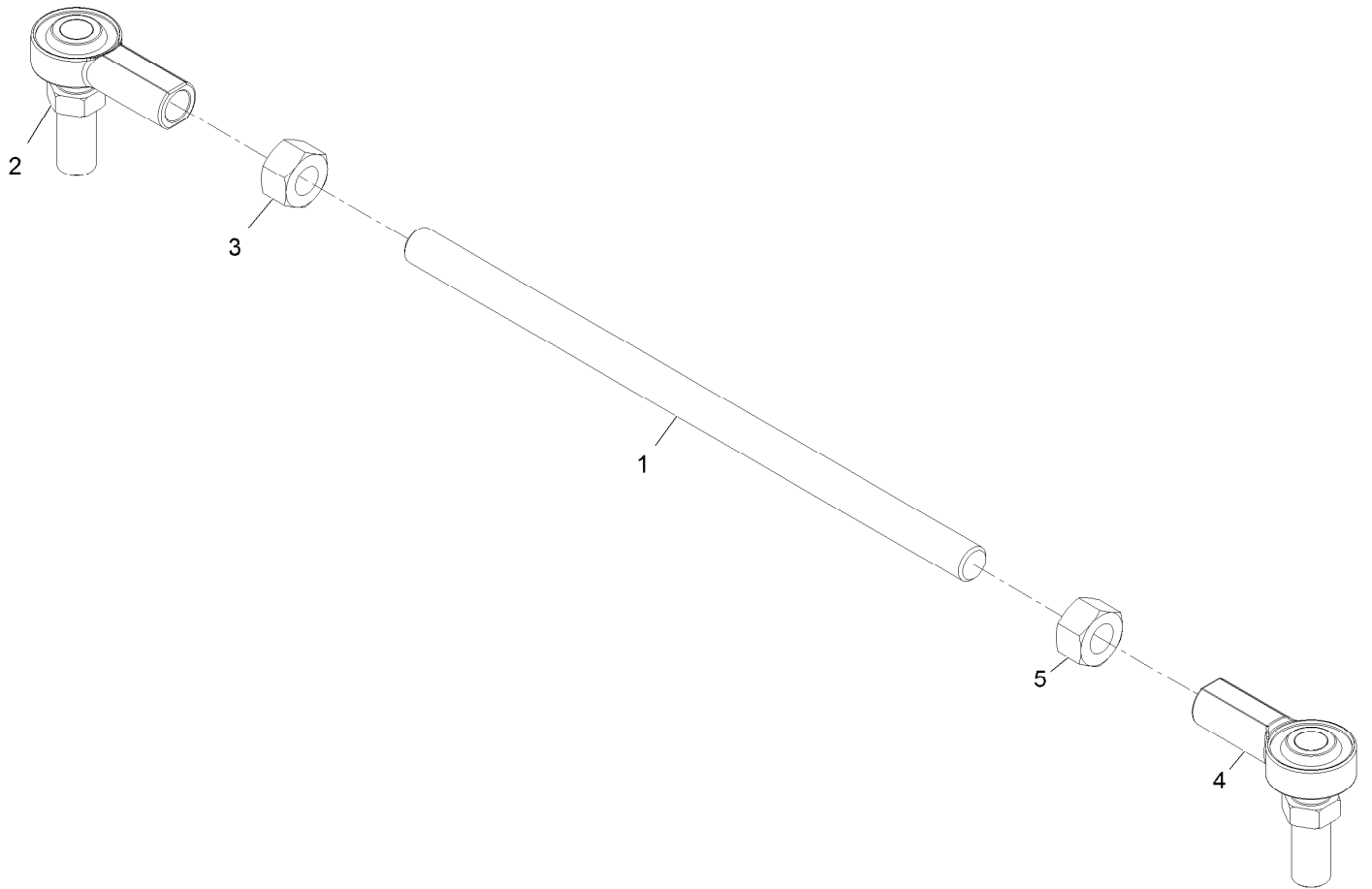


Steering Assembly (continued)

| <i>Ref.</i> | <i>Part Number</i> | <i>Qty.</i> | <i>Description</i> | <i>Ref.</i> | <i>Part Number</i> | <i>Qty.</i> | <i>Description</i> |
|-------------|--------------------|-------------|-------------------------|-------------|--------------------|-------------|-------------------------------|
| 1 | 126-7045 | 1 | Front Axle ASM | 15 | 126-0980 | 2 | Bolt-Carriage 3/8-16 X 1 SS |
| 1:2 | 126-7048 | 4 | Bearing-Sleeve | 16 | 135-2882 | 6 | Nut-HF |
| 1:3 | 126-1375 | 3 | Zerk-Grease | 17 | 3257-7 | 1 | Key-Woodruff |
| 2 | 126-0656 | 1 | Washer-Flat | 18 | 135-3155 | 1 | Motion Handle ASM |
| 3 | 126-3841 | 1 | Nut-Hex Nyloc 5/8-11 SS | 18:2 | 135-2844 | 1 | Decal-Warning |
| 4 | 135-3156 | 1 | Steering Shaft ASM | 19 | 142-2735 | 1 | Motion Handle ASM |
| 4:2 | 126-1375 | 1 | Zerk-Grease | 19:2 | 103-9928 | 2 | Bearing |
| 5 | 126-7044 | 4 | Washer-Thrust | 20 | 126-0496 | 1 | Shaft-Pivot, Speed Control |
| 6 | 126-6733 | 2 | Front Axle ASM | 21 | 116-4198 | 1 | Spacer-Shaft, Drive Lever |
| 7 | 126-7069 | 2 | Arm-Steering | 22 | 117-8304 | 2 | Screw-Hex Flange 1/4-20 X 3/4 |
| 8 | 126-3875 | 4 | Washer | 23 | 126-1604-03 | 1 | Panel-Rear, Steering |
| 10 | 126-7185 | 2 | Steering Linkage ASM | 24 | 32144-10 | 4 | Screw-HWH 1/4-20 X .62 |
| 11 | 135-1711 | 4 | Screw-HH | 25 | 2411-41 | 2 | Rod End-Ball Joint |
| 12 | 98-5975 | 2 | Washer-Spring Disc 3/8 | 26 | 126-0498 | 2 | Screw-HH 1/4-20 X 7/8 SS |
| 13 | 142-2736 | 2 | Wheel And Tire ASM | 27 | 135-2880 | 2 | Nut-HF |
| 13:1 | | 1 | Wheel ASM ● | 28 | 126-2169 | 1 | Cable-Motion |
| 13:1:1 | 116-0720 | 2 | Bearing-Ball | 29 | 3290-378 | 2 | Tie-Cable |
| 13:1:2 | 126-7260 | 1 | Spacer | 30 | 104-1412 | 2 | Bumper-Rubber |
| 13:2 | 126-1509 | 1 | Tire | 31 | 3210-9 | 2 | Screw-HH |
| 13:3 | 232-27 | 1 | Stem-Valve | 32 | 32152-5 | 2 | Nut-Hex 5/16-24 |
| 13:4 | 302-62 | 1 | Fitting-Grease | 33 | 126-7050 | 2 | Spacer-Relief |
| 14 | 116-9789 | 1 | Bumper-Front | | | | |

● Not serviced separately

Steering Linkage Assembly No. 126-7185

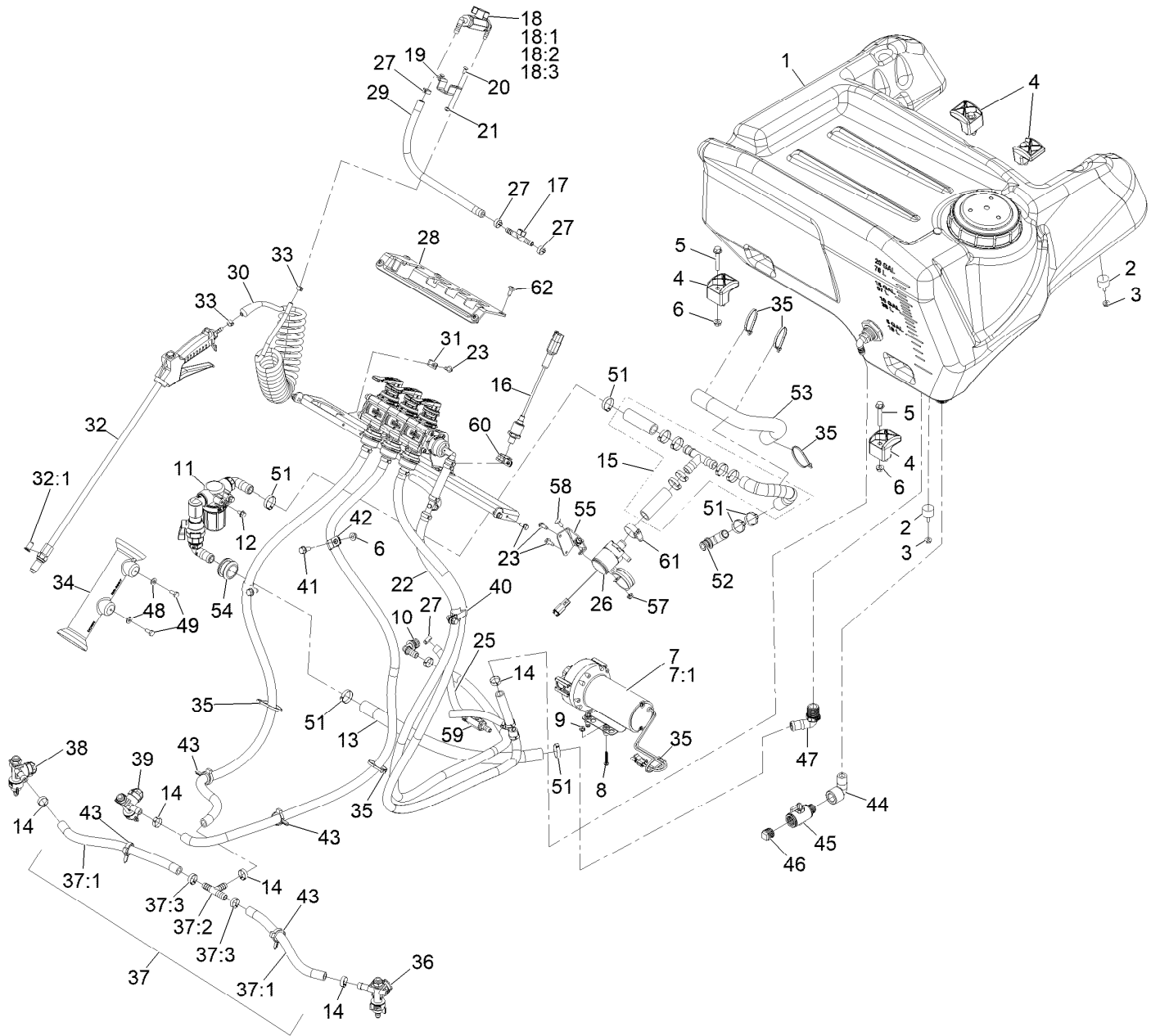


Steering Linkage Assembly No. 126-7185 (continued)

| <i>Ref.</i> | <i>Part Number</i> | <i>Qty.</i> | <i>Description</i> |
|-------------|--------------------|-------------|-----------------------|
| 1 | 126-7183 | 1 | Rod-Linkage, Steering |
| 2 | 126-7181 | 1 | Rod-End, RH |
| 3 | 126-0687 | 1 | Nut-Hex |

| <i>Ref.</i> | <i>Part Number</i> | <i>Qty.</i> | <i>Description</i> |
|-------------|--------------------|-------------|--------------------|
| 4 | 126-7182 | 1 | Rod-End, LH |
| 5 | 126-0688 | 1 | Nut-Hex, LH |

Spray System Assembly

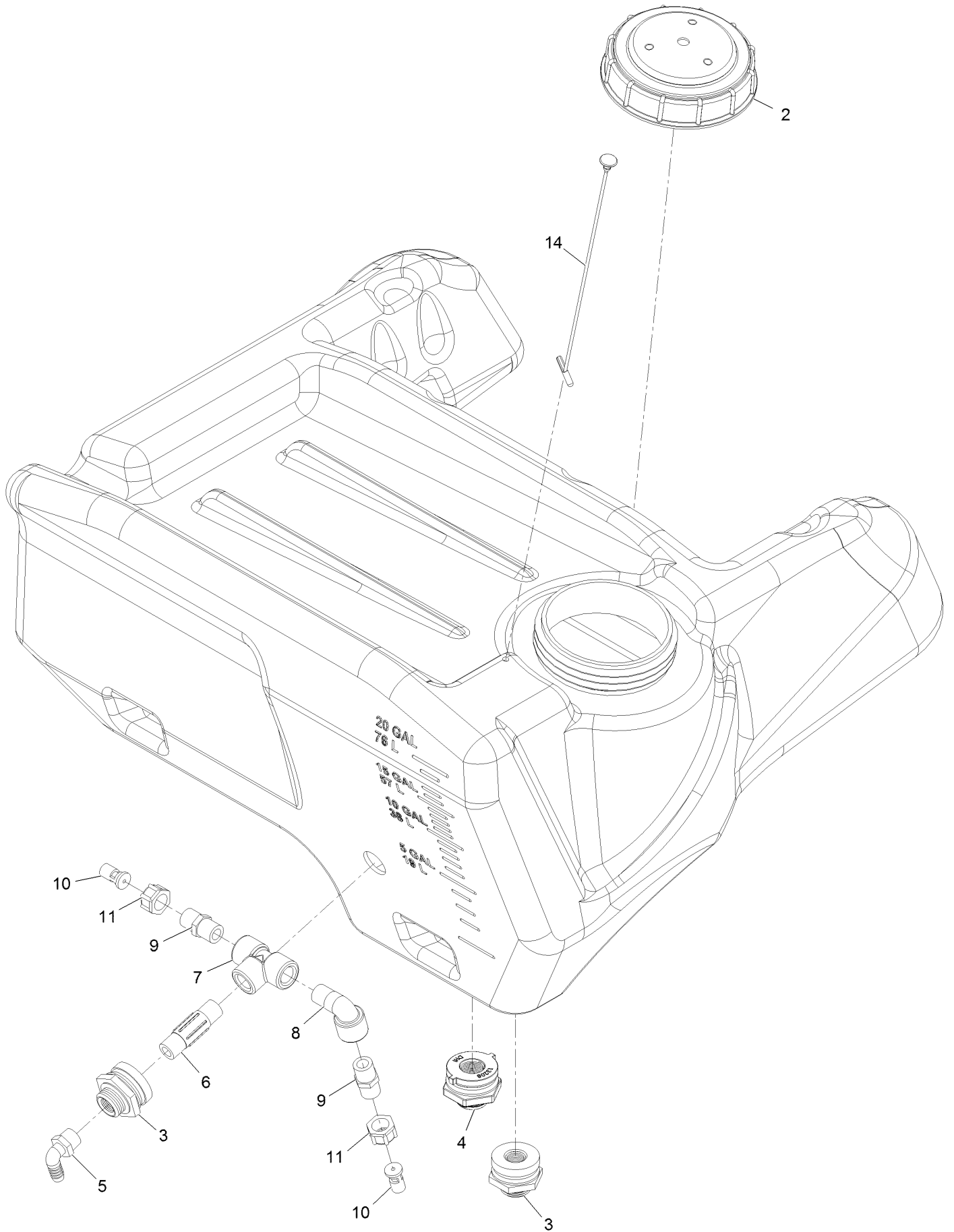


Spray System Assembly (continued)

| <i>Ref.</i> | <i>Part Number</i> | <i>Qty.</i> | <i>Description</i> | <i>Ref.</i> | <i>Part Number</i> | <i>Qty.</i> | <i>Description</i> |
|-------------|--------------------|-------------|--|-------------|--------------------|-------------|--|
| 1 | 142-2730 | 1 | Tank-Sprayer | 30 | 142-5821 | 1 | Hose-Coiled, 04X15Ft |
| 2 | 1-523420 | 4 | Bumper | 31 | 2412-89 | 1 | Clamp-R |
| 3 | 135-2880 | 4 | Nut-Hex Flange 1/4-20 SS | 32 | 126-8000 | 1 | Spray Wand ASM |
| 4 | 107-4543 | 4 | Clamp | 32:1 | 126-3943 | 1 | Strainer-Nozzle, 50M 5PSI Check |
| 5 | 126-2711 | 4 | Screw-HHF 5/16-18 X 2 Serrated SS | 33 | 126-2707 | 2 | Clamp |
| 6 | 135-2881 | 7 | Nut-Hex Flg 5/16-18 SS W/Patch | 34 | 126-3987 | 1 | Holder-Wand |
| 7 | 142-2301 | 1 | Pump-Diaphragm, 3.8 GPM | 35 | 3290-378 | 5 | Tie-Cable |
| 7:1 | 135-2477 | 1 | Kit-Diaphragm Pump | 36 | 126-3667 | 1 | Left Nozzle Sub ASM |
| 8 | 692501 | 4 | Screw-SHWH | 37 | 126-2252 | 1 | Hose ASM |
| 9 | 126-2645 | 4 | Nut-Hex Flange #10-24 Serrated Nyloc SS | 37:1 | 126-2264 | 2 | Hose-Water |
| 10 | 126-0961 | 1 | Fitting-Elbow, Barbed | 37:2 | 126-0968 | 1 | Fitting-Tee |
| 11 | 126-4358 | 1 | Strainer ASM | 37:3 | 142-3662 | 2 | Clamp Oetiker 0.716" Closed 0.826" Open |
| 12 | 126-2713 | 2 | Screw-HHF M6-1 X 12Mm SS W/Patch Lock | 38 | 126-3669 | 1 | Right Nozzle Sub ASM |
| 13 | 126-4422 | 1 | Hose-Water | 39 | 126-3668 | 1 | Center Nozzle Sub ASM |
| 14 | 142-3662 | 8 | Clamp Oetiker 0.716" Closed 0.826" Open | 40 | 120-1959 | 1 | Clamp |
| 15 | 142-2192 | 1 | ASM-, 3/4 Pvc Reinforced Water Hose | 41 | 126-2712 | 3 | Screw-HHF 5/16-18 X 3/4 Serrated SS |
| 16 | 142-4495 | 1 | Transducer-Pressure | 42 | 1-633396 | 2 | Clip-Loom 5/8 |
| 17 | 126-2348 | 1 | Fitting-Tee | 43 | 105-1853 | 4 | Clamp-Hose |
| 18 | | 1 | Wand Control ASM ● | 44 | 108-3573 | 1 | Elbow-90 DEG |
| 18:1 | 126-0242 | 1 | Valve-Ball | 45 | 126-1494 | 1 | Microvalve |
| 18:2 | 126-4992 | 1 | Fitting-Elbow-90 | 46 | 363-3125 | 1 | Plug |
| 18:3 | 126-4993 | 1 | Fitting-Elbow-90 | 47 | 119-0490 | 1 | Elbow-Hosebarb |
| 19 | 126-0239-03 | 1 | Bracket-Valve | 48 | 360-0140 | 2 | Washer-Flat |
| 20 | 1-807513 | 2 | Bolt-Carriage #10-24 X 1/2 | 49 | 126-1290 | 2 | Screw-HH 1/4-20 X 5/8 SS |
| 21 | 3296-2 | 2 | Nut-Nyloc #10-24 | 51 | 126-4779 | 6 | Clamp |
| 22 | | 1 | Manifold-Valve, Control ASM ● | 52 | 126-4420 | 1 | Fitting-Elbow |
| 23 | 32144-10 | 7 | Screw-HWH 1/4-20 X .62 | 53 | 126-5065 | 1 | Sleeve-Corrugated, Split |
| 25 | 142-2213 | 1 | Hose-Water | 54 | 126-7410 | 1 | Grommet |
| 26 | 135-7843 | 1 | Pump-Centrifugal | 55 | 135-7913-03 | 1 | Brkt-Recir Pump |
| 27 | 126-3749 | 5 | Clamp | 57 | 104-7201 | 2 | Nut-Nyloc 1/4-20 Flg |
| 28 | 142-7735 | 1 | Cover-Controls | 58 | 3229-11 | 2 | Bolt-Carriage 1/4-20 X 5/8 |
| 29 | 126-5847 | 1 | Hose-Water, 3/8 Pvc Red | 59 | 142-2180 | 1 | Valve-3/8 Check |
| | | | | 60 | 132-7590 | 1 | R-Clamp |
| | | | | 61 | 2412-129 | 1 | Clamp-Hose |
| | | | | 62 | 120-7950 | 5 | Screw-1/4-20 X 1/2 Tf Torx Plus |

● Not serviced separately

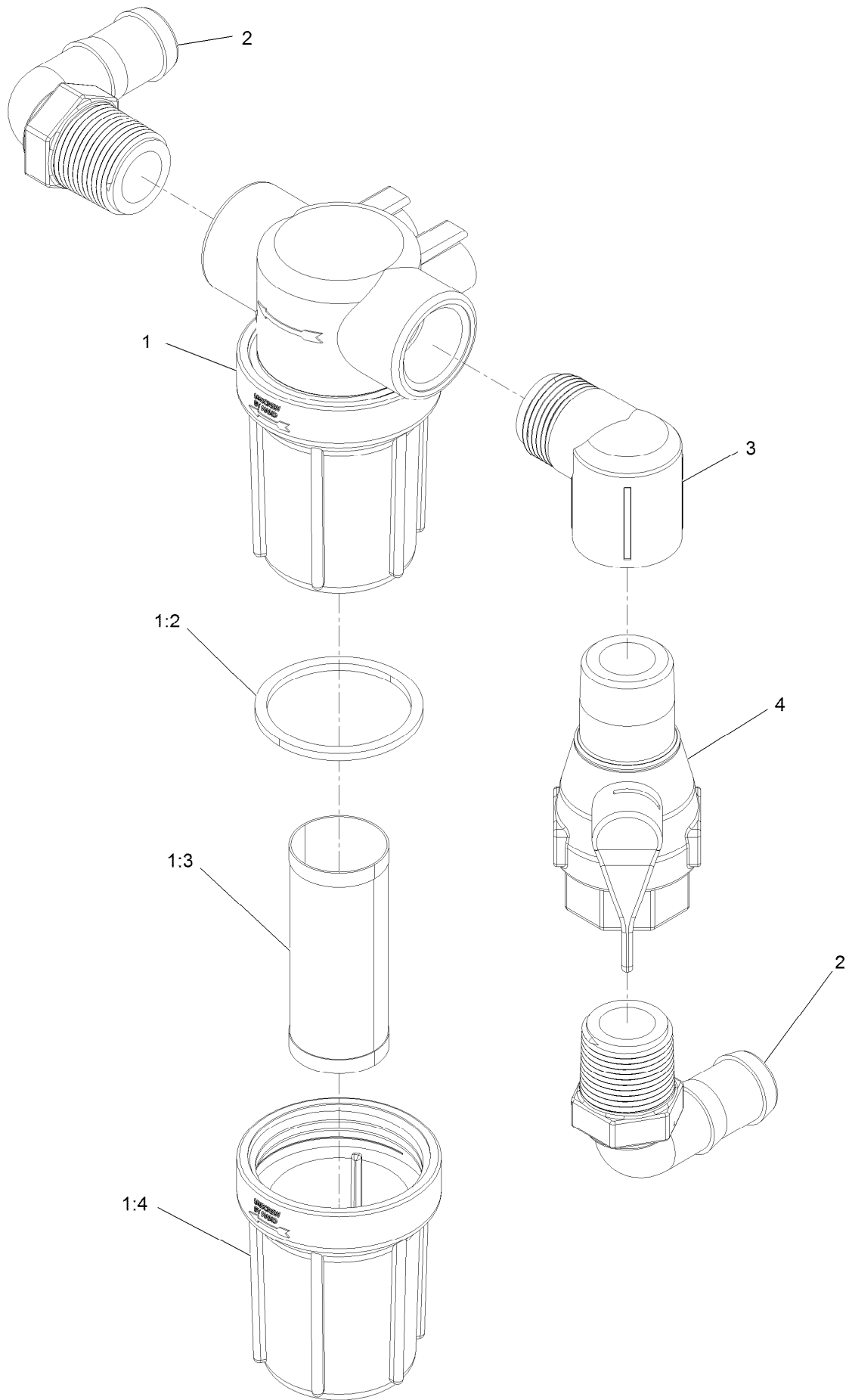
Sprayer Tank Assembly



Sprayer Tank Assembly (continued)

| <i>Ref.</i> | <i>Part Number</i> | <i>Qty.</i> | <i>Description</i> | <i>Ref.</i> | <i>Part Number</i> | <i>Qty.</i> | <i>Description</i> |
|-------------|--------------------|-------------|------------------------|-------------|--------------------|-------------|--|
| 2 | 126-0285 | 1 | Cap-Water, 5 Inch Vent | 8 | 108-3573 | 1 | Elbow-90 DEG |
| 3 | 126-0400 | 2 | Fitting-Bulkhead | 9 | 108-3574 | 2 | Nipple-Short |
| 4 | 126-4393 | 1 | Fitting-Bulkhead | 10 | 100-6705 | 2 | Nozzle-Agitation |
| 5 | 42046 | 1 | Elbow-90 DEG | 11 | 99-0766 | 2 | Nut |
| 6 | 94-7103 | 1 | Nipple | 14 | 126-3381 | 1 | Lanyard-Cap, Self Anchoring (12 Inch) |
| 7 | 94-7100 | 1 | Tee | | | | |

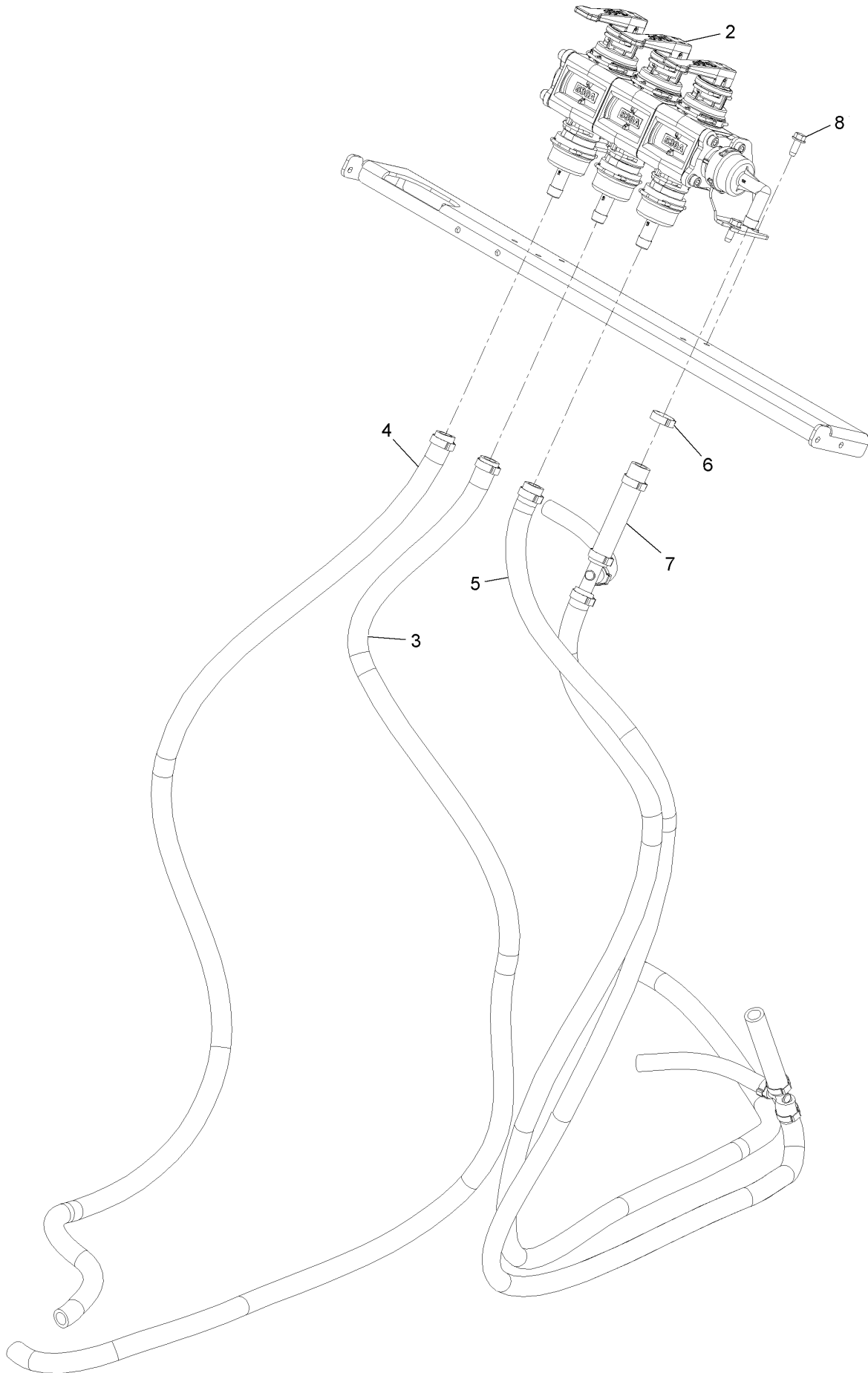
Strainer Assembly



Strainer Assembly (continued)

| <i>Ref.</i> | <i>Part Number</i> | <i>Qty.</i> | <i>Description</i> | <i>Ref.</i> | <i>Part Number</i> | <i>Qty.</i> | <i>Description</i> |
|-------------|--------------------|-------------|--------------------------------|-------------|--------------------|-------------|--------------------|
| 1 | 126-4374 | 1 | Strainer-Line | 1:4 | 126-7195 | 1 | Bowl-Strainer |
| 1:2 | 126-2272 | 1 | Gasket-Head, Line Strainer | 2 | 119-0490 | 2 | Elbow-Hosebarb |
| 1:3 | 126-2273 | 1 | Screen-Strainer, 30 Mesh SS | 3 | 102-4272 | 1 | Elbow |
| | | | | 4 | 126-4451 | 1 | Valve-Ball |

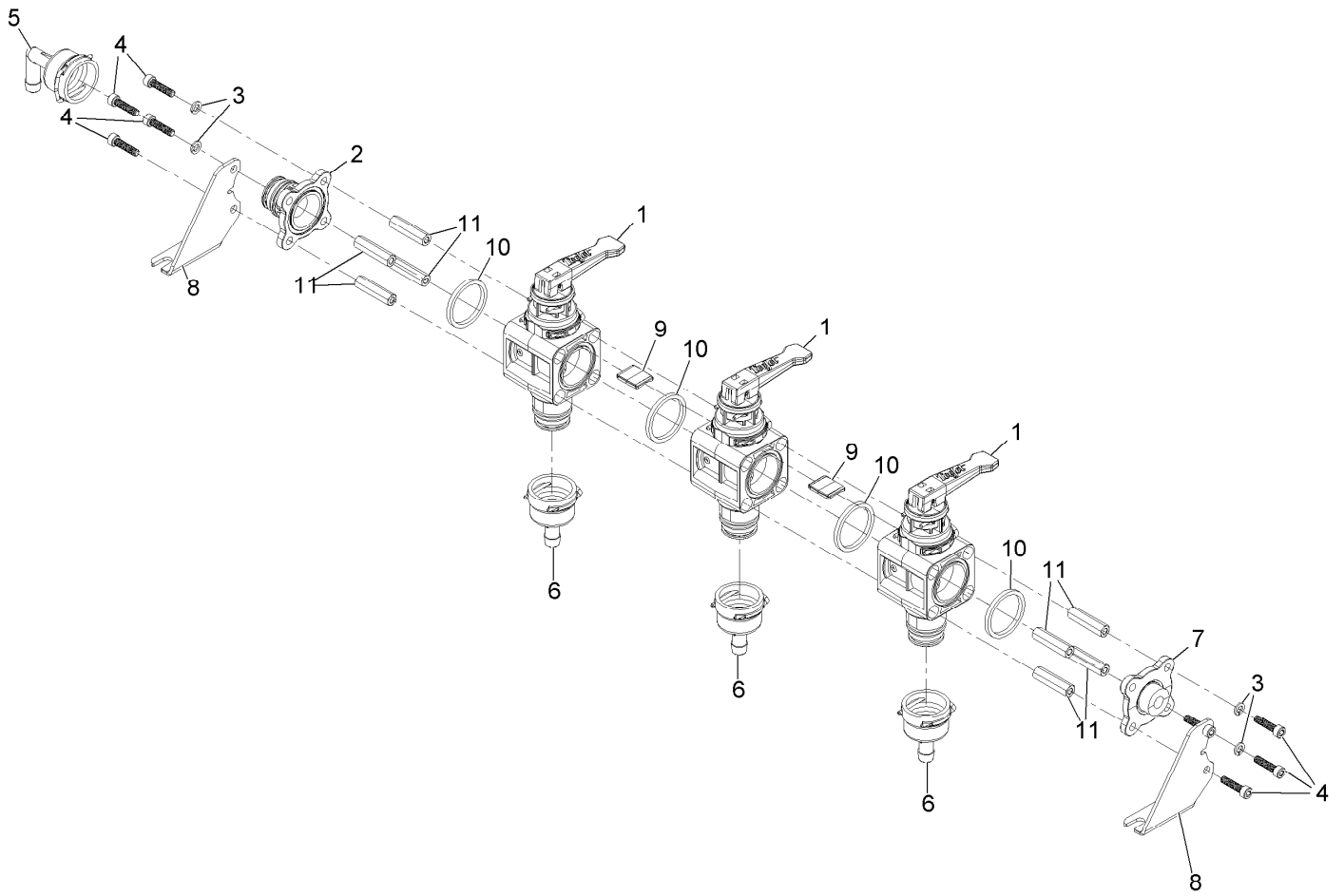
Control Valve Manifold and Hose Assembly



Control Valve Manifold and Hose Assembly (continued)

| <i>Ref.</i> | <i>Part Number</i> | <i>Qty.</i> | <i>Description</i> | <i>Ref.</i> | <i>Part Number</i> | <i>Qty.</i> | <i>Description</i> |
|-------------|--------------------|-------------|-------------------------|-------------|--------------------|-------------|--|
| 2 | 142-7292 | 1 | Manifold-Valve, Control | 6 | 142-3662 | 5 | Clamp Oetiker 0.716" Closed 0.826" Open |
| 3 | 126-2261 | 1 | Hose-Water | 7 | 142-7995 | 1 | Hose ASM |
| 4 | 126-2263 | 1 | Hose-Water | 8 | 32144-10 | 4 | Screw-HWH 1/4-20 X .62 |
| 5 | 142-3560 | 1 | Hose ASM | | | | |

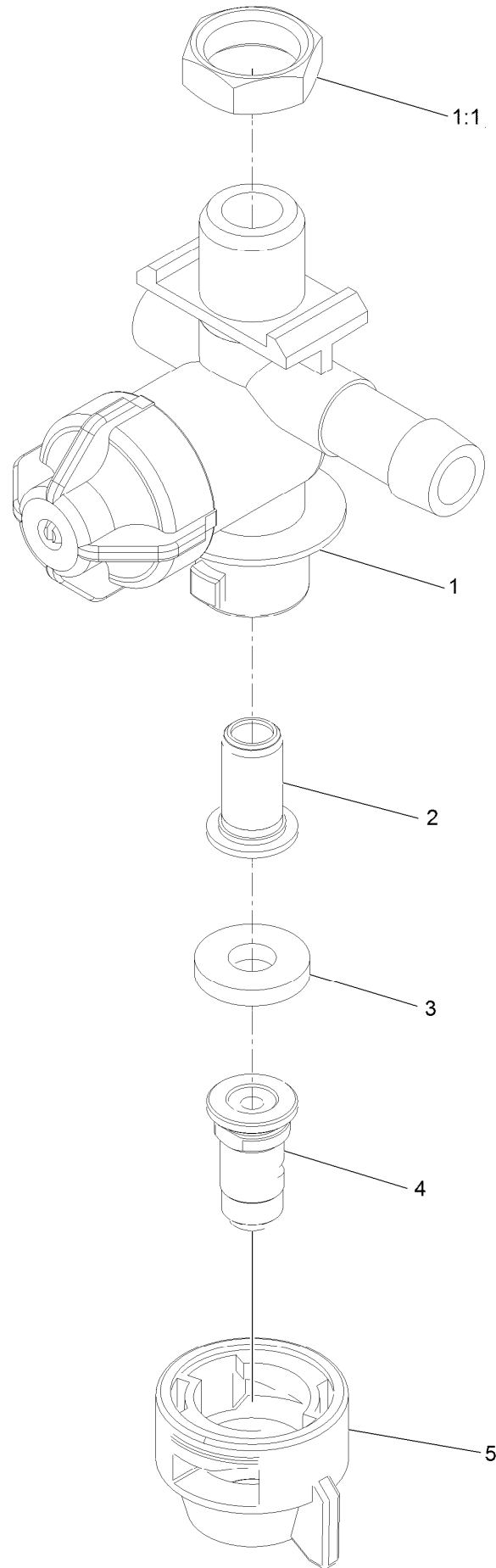
Control Valve Manifold Assembly



Control Valve Manifold Assembly (continued)

| <i>Ref.</i> | <i>Part Number</i> | <i>Qty.</i> | <i>Description</i> | <i>Ref.</i> | <i>Part Number</i> | <i>Qty.</i> | <i>Description</i> |
|-------------|--------------------|-------------|-----------------------------------|-------------|--------------------|-------------|---------------------------|
| 1 | 142-7042 | 3 | ASM-Valve Section, Grey | 6 | 142-6187 | 3 | Kit-1/2 Hb, STR, Qc |
| 2 | 142-6347 | 1 | Adaptor-Male Qc Bolted Flanged | 7 | 142-7993 | 1 | Cap |
| 3 | 142-4415 | 4 | Washer | 8 | 142-7624 | 2 | Brkt-Sprayer Manifold |
| 4 | 142-6348 | 8 | Screw-Hscs 6 MM X 25.0 MM SS | 9 | 142-7496 | 2 | Alignment Piece |
| 5 | 142-7967 | 1 | Kit-Hose Barb, 1/2 90, Qc | 10 | 142-7497 | 4 | Gasket |
| | | | | 11 | 142-7498 | 8 | M6X1 Metric Hex Stand-Off |

Left Nozzle Assembly No. 126-3667



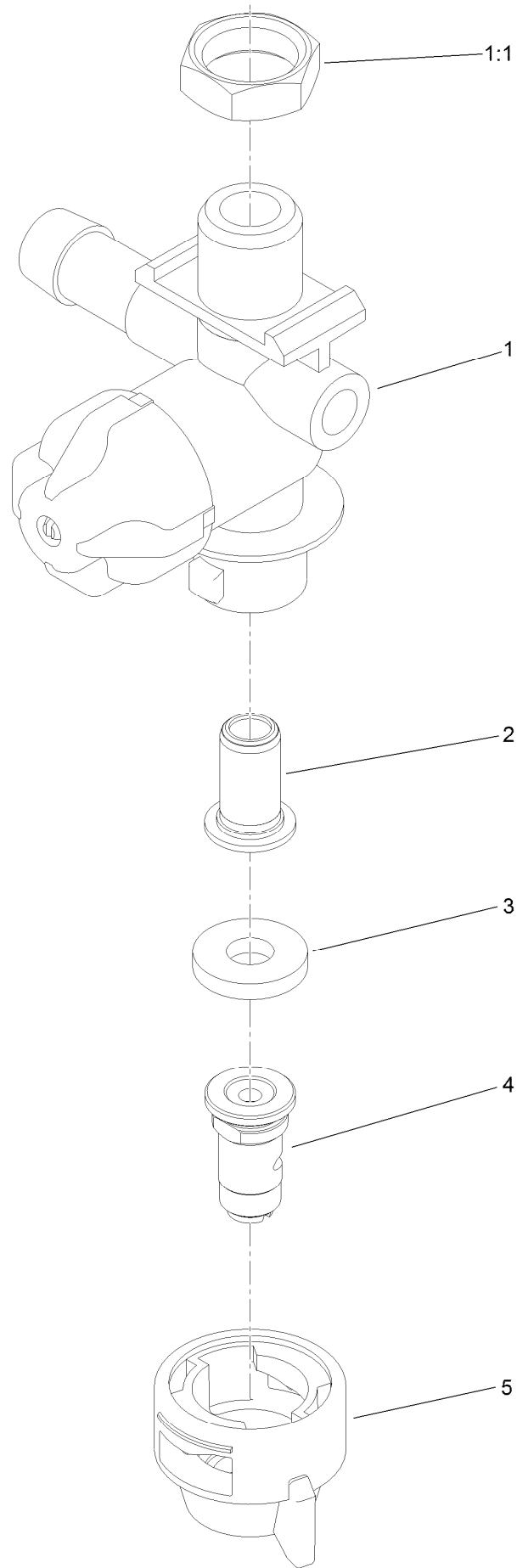
Left Nozzle Assembly No. 126-3667 (continued)

| <i>Ref.</i> | <i>Part Number</i> | <i>Qty.</i> | <i>Description</i> | <i>Ref.</i> | <i>Part Number</i> | <i>Qty.</i> | <i>Description</i> |
|-------------|--------------------|-------------|---------------------|-------------|--------------------|-------------|------------------------|
| 1 | 116-9790 | 1 | LH Nozzle Body ASM | 5 | 116-9796 | 1 | Cap-Nozzle |
| 1:1 | 126-2801 | 1 | Nut-Nylon | 99 | 126-7172 | 1 | Nozzle-Spray, Blue ●■ |
| 2 | 126-1212 | 1 | Strainer-Tip | 99 | 126-7171 | 1 | Nozzle-Spray, Brown ●■ |
| 3 | 116-9797 | 1 | Gasket-Seal | 99 | 126-7170 | 1 | Nozzle-Spray, Gray ●■ |
| 4 | 116-9798 | 1 | Nozzle-Spray, White | 99 | 126-2566 | 1 | Nozzle-Spray, Red ●■ |

● Not illustrated

■ Sold separately

Right Nozzle Assembly No. 126-3669

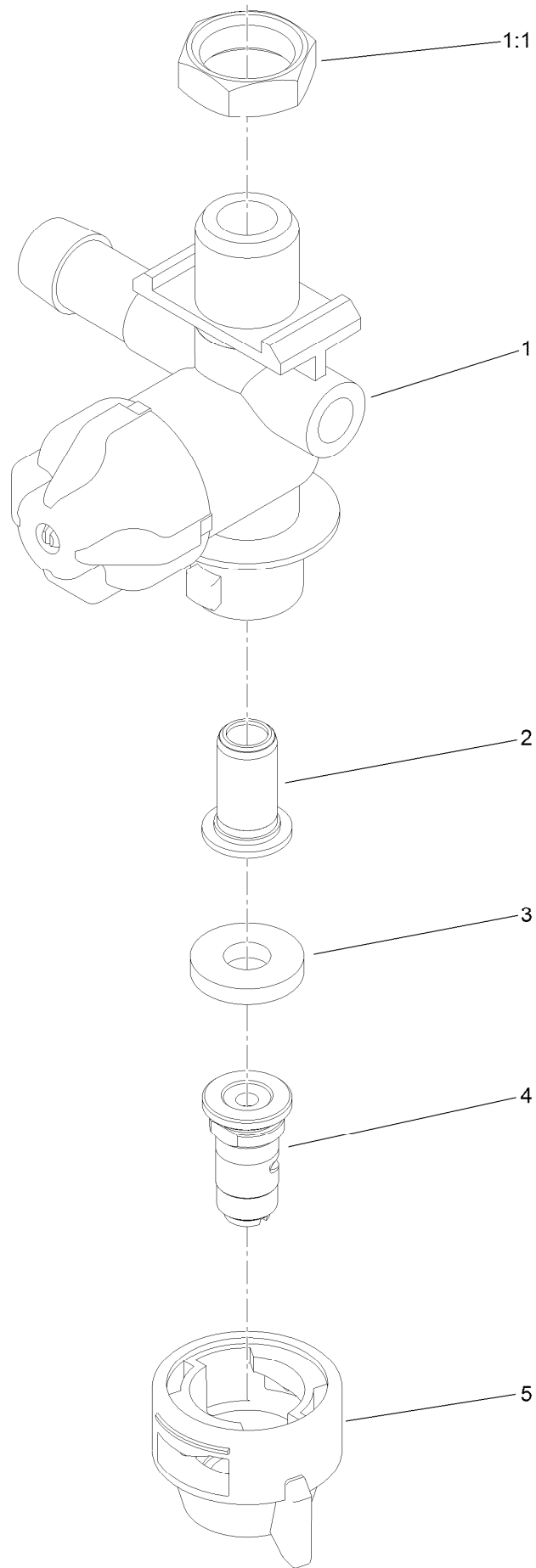


Right Nozzle Assembly No. 126-3669 (continued)

| <i>Ref.</i> | <i>Part Number</i> | <i>Qty.</i> | <i>Description</i> | <i>Ref.</i> | <i>Part Number</i> | <i>Qty.</i> | <i>Description</i> |
|-------------|--------------------|-------------|---------------------|-------------|--------------------|-------------|-----------------------|
| 1 | 116-9791 | 1 | RH Nozzle Body ASM | 5 | 116-9796 | 1 | Cap-Nozzle |
| 1:1 | 126-2801 | 1 | Nut-Nylon | 99 | 126-7172 | 1 | Nozzle-Spray, Blue ● |
| 2 | 126-1212 | 1 | Strainer-Tip | 99 | 126-7171 | 1 | Nozzle-Spray, Brown ● |
| 3 | 116-9797 | 1 | Gasket-Seal | 99 | 126-7170 | 1 | Nozzle-Spray, Gray ● |
| 4 | 116-9798 | 1 | Nozzle-Spray, White | 99 | 126-2566 | 1 | Nozzle-Spray, Red ● |

● Not illustrated

Center Nozzle Assembly No. 126-3668



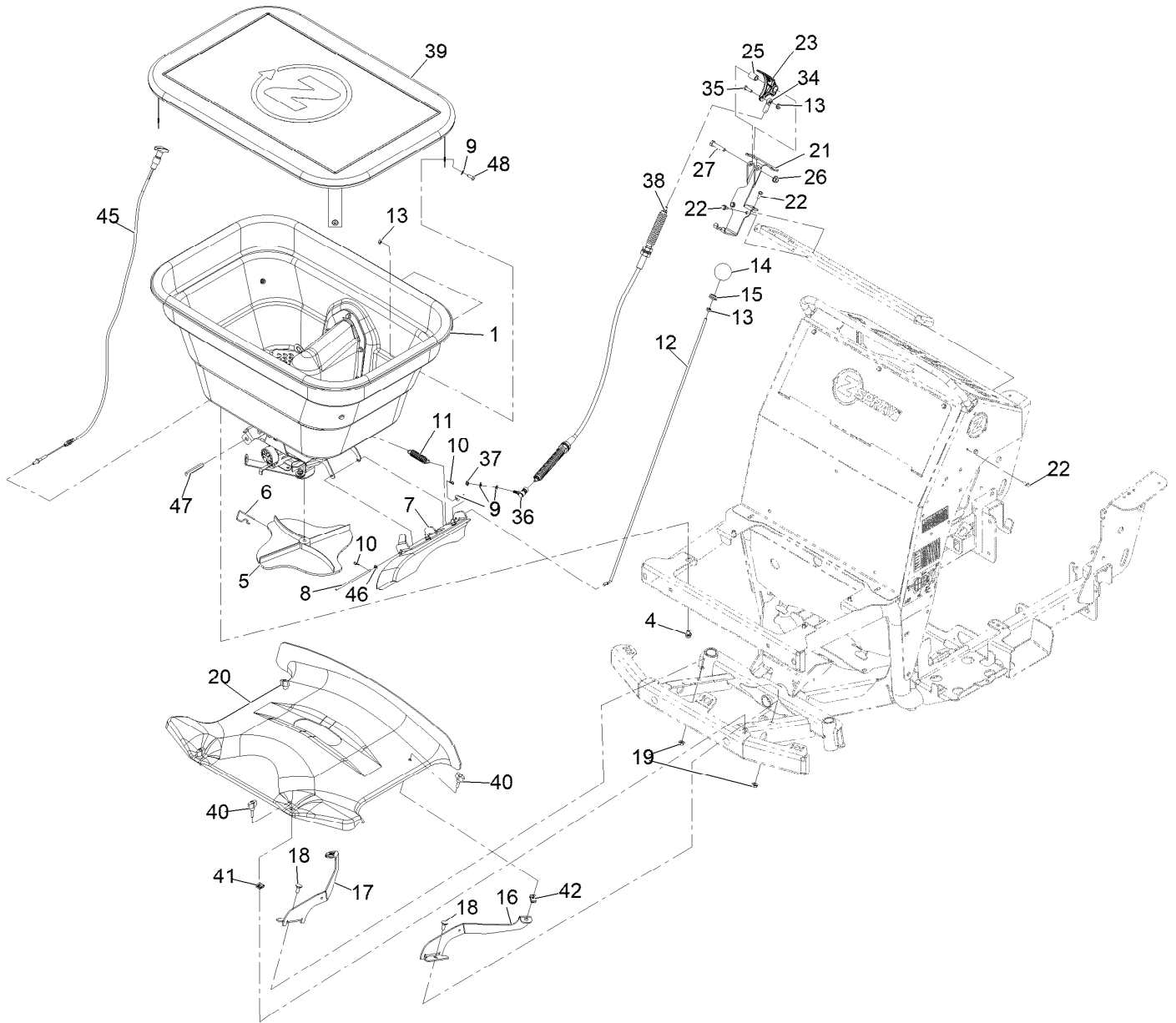
Center Nozzle Assembly No. 126-3668 (continued)

| <i>Ref.</i> | <i>Part Number</i> | <i>Qty.</i> | <i>Description</i> | <i>Ref.</i> | <i>Part Number</i> | <i>Qty.</i> | <i>Description</i> |
|-------------|--------------------|-------------|--------------------|-------------|--------------------|-------------|------------------------|
| 1 | 116-9791 | 1 | RH Nozzle Body ASM | 5 | 116-9796 | 1 | Cap-Nozzle |
| 1:1 | 126-2801 | 1 | Nut-Nylon | 99 | 126-7170 | 1 | Nozzle-Spray, Gray ●■ |
| 2 | 126-1212 | 1 | Strainer-Tip | 99 | 116-9798 | 1 | Nozzle-Spray, White ●■ |
| 3 | 116-9797 | 1 | Gasket-Seal | 99 | 126-7171 | 1 | Nozzle-Spray, Brown ●■ |
| 4 | 126-2566 | 1 | Nozzle-Spray, Red | 99 | 126-7172 | 1 | Nozzle-Spray, Blue ●■ |

● Not illustrated

■ Sold separately

Spreader Assembly



Spreader Assembly (continued)

| <i>Ref.</i> | <i>Part Number</i> | <i>Qty.</i> | <i>Description</i> | <i>Ref.</i> | <i>Part Number</i> | <i>Qty.</i> | <i>Description</i> |
|-------------|--------------------|-------------|--|-------------|--------------------|-------------|-------------------------------------|
| 1 | | 1 | Spreader Hopper ASM ● | 21 | 142-7702 | 1 | Mount-Handle, Fert Gate |
| 4 | 142-4255 | 4 | Screw-HHF 5/16-18 X 1/2 Serrated SS | 22 | 32144-10 | 3 | Screw-HWH 1/4-20 X .62 |
| 5 | 142-3506 | 1 | Spinner-Spreader | 23 | 146-0418 | 1 | Lever-Spread, Wide |
| 6 | 142-3541 | 1 | Clip-Spinner | 25 | 142-7728 | 1 | Spacer |
| 7 | | 1 | Side Deflector ASM ● | 26 | 135-2882 | 1 | Nut-Hex Flg 3/8-16 SS W/Patch |
| 8 | 135-2558 | 1 | Pin-Deflector | 27 | 323-9 | 1 | Screw-HH 3/8-16 X 1 3/4 |
| 9 | 360-0140 | 9 | Washer-Flat | 34 | 2411-41 | 1 | Rod End-Ball Joint |
| 10 | 126-1631 | 2 | Pin-Cotter, Hair | 35 | 126-0498 | 1 | Screw-HH 1/4-20 X 7/8 SS |
| 11 | 126-2127 | 1 | Spring-Extension | 36 | 126-2005 | 1 | Ball-Joint |
| 12 | 126-2190 | 1 | Rod-Control, Deflector | 37 | 126-2725 | 1 | Nut-Hex Jam 1/4-28 SS Thin |
| 13 | 135-2880 | 6 | Nut-Hex Flange 1/4-20 SS | 38 | 126-1783 | 1 | Cable |
| 14 | 121-1877 | 1 | Knob-Rate, Flow | 39 | 142-2732 | 1 | Cover-Hopper, Clear Vinyl Window |
| 15 | 1-633630 | 1 | Grommet | 40 | 126-5846 | 4 | Knob-T |
| 16 | 126-2145 | 1 | Bracket-Cover, Front (LH) | 41 | 126-3740 | 2 | Nut-Retainer, U Style |
| 17 | 126-2146 | 1 | Bracket-Cover, Front (RH) | 42 | 126-3739 | 2 | Nut-Retainer |
| 18 | 126-0695 | 2 | Screw-Carriage 5/16-18 X 3/4 SS | 45 | 126-4150 | 1 | Cable-Control, Turn Lock |
| 19 | 135-2881 | 2 | Nut-Hex Flg 5/16-18 SS W/Patch | 46 | 126-0759 | 1 | Washer-Flat |
| 20 | 126-2063 | 1 | Cover-Front, Spreader/Sprayer | 47 | 126-4655 | 1 | Post-Hex, Diffuser Guide |
| | | | | 48 | 126-1290 | 4 | Screw-HH 1/4-20 X 5/8 SS |

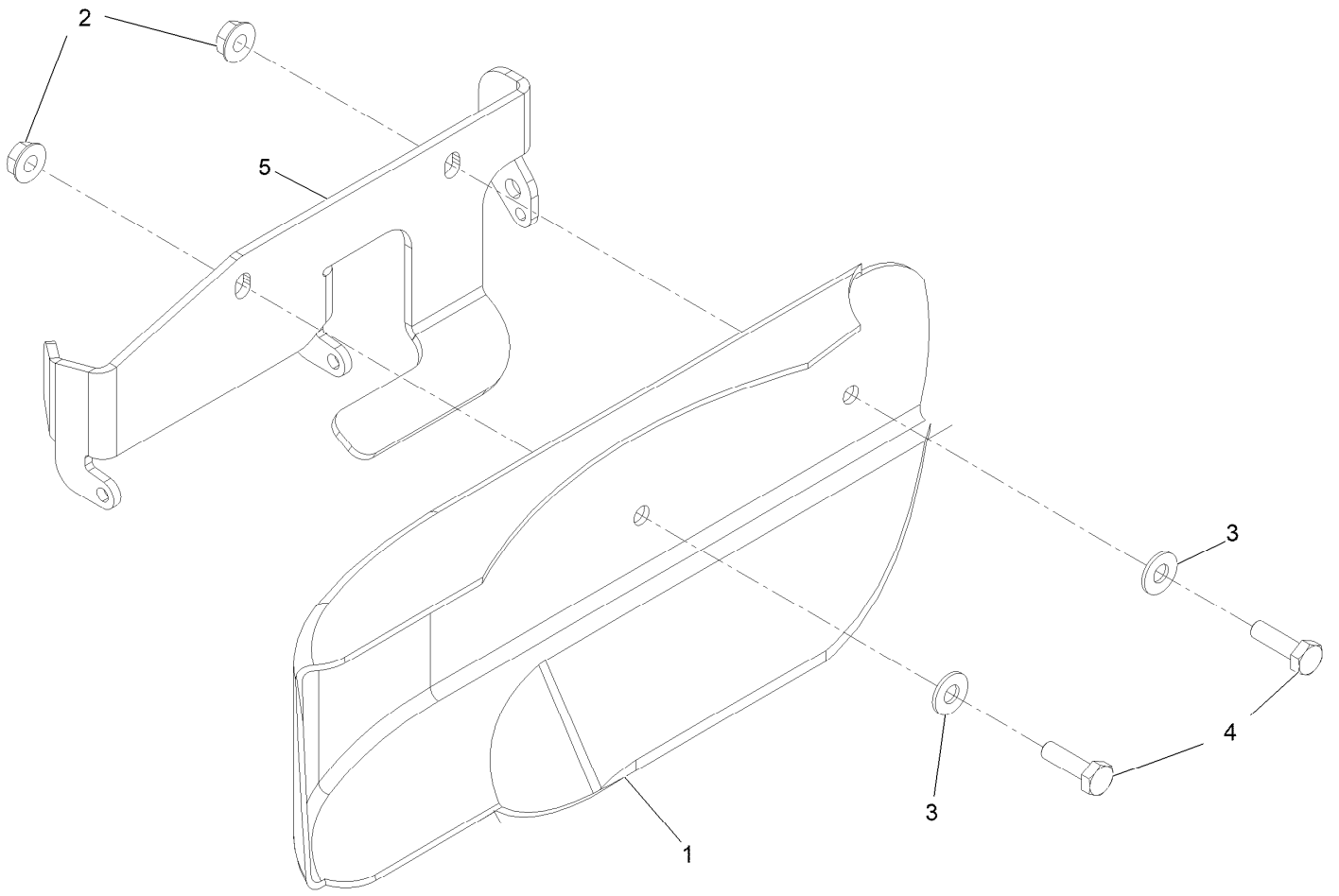
● Not serviced separately

Spreader Hopper Assembly (continued)

| <i>Ref.</i> | <i>Part Number</i> | <i>Qty.</i> | <i>Description</i> | <i>Ref.</i> | <i>Part Number</i> | <i>Qty.</i> | <i>Description</i> |
|-------------|--------------------|-------------|----------------------------------|-------------|--------------------|-------------|---------------------------------------|
| 1 | 142-2734 | 1 | Hopper-Spreader, 175 Lb | 22 | 135-6280 | 8 | Screw-HHF 1/4-20 X 1/2 Serrated SS |
| 2 | 126-4245 | 1 | Bracket-Mount, Motor | 23 | 142-3602 | 1 | Bracket-Lever, Hopper Gate |
| 3 | 360-0140 | 16 | Washer-Flat | 25 | 142-3665 | 1 | Washer-Felt |
| 4 | 126-0498 | 2 | Screw-HH 1/4-20 X 7/8 SS | 26 | 142-3316 | 4 | Guide-Rate, Gate |
| 5 | 135-2880 | 12 | Nut-HF | 27 | 142-3406 | 1 | Diffuser |
| 6 | 126-6231 | 1 | Spreader Motor ASM | 28 | 126-3729 | 1 | Pin-Clevis |
| 6:2 | 135-3989 | 4 | Spacer-Flanged | 29 | 126-1631 | 1 | Pin-Cotter, Hair |
| 6:3 | 360-0140 | 4 | Washer-Flat | 30 | 142-3821 | 1 | Rate Dial ASM |
| 6:4 | 363-8641 | 4 | Washer-Lock, Int | 30:1 | 142-3319 | 1 | Mount-Dial |
| 6:5 | 739001 | 4 | Screw-SHWH 10-32 X 7/8 | 30:2 | 142-3359 | 1 | Dial |
| 7 | 83-2400 | 1 | Spacer | 30:3 | | 1 | Rate Gate Link ASM ● |
| 9 | 126-1348 | 1 | Cover-Motor | 30:3:1 | 126-0987 | 1 | Link-Gate, Rate |
| 10 | 142-3666 | 1 | Wire-Agitator | 30:3:2 | 126-4196 | 1 | Screw-Shoulder, Slotted |
| 11 | 142-4040 | 1 | Hopper Plate W/ Bearing ASM | 30:4 | 88-1080 | 1 | Footpad Fastener |
| 11:2 | 142-4042 | 1 | Hopper Bottom Bearing | 31 | 142-4342 | 1 | Rate Gate |
| 12 | 363-8641 | 4 | Washer-Lock, Int | 32 | 126-4112 | 1 | Lever-Gate |
| 13 | 126-6334 | 1 | Flange-Cover, Motor | 33 | 126-3143 | 1 | Screen-Hopper, Large Hole |
| 14 | 126-4650 | 1 | Bracket-Hopper, Gate Controls | 33 | 126-3240 | 1 | Screen-Hopper, Medium Hole |
| 15 | 93-1633 | 4 | Washer | 33 | 126-3242 | 1 | Screen-Hopper, Small Hole |
| 16 | 126-3684 | 2 | Spacer | 34 | 126-1624 | 1 | Clamp-Loop |
| 19 | 126-1646 | 1 | Rod-Control, Diffuser | 35 | 126-0759 | 2 | Washer-Flat |

● Not serviced separately

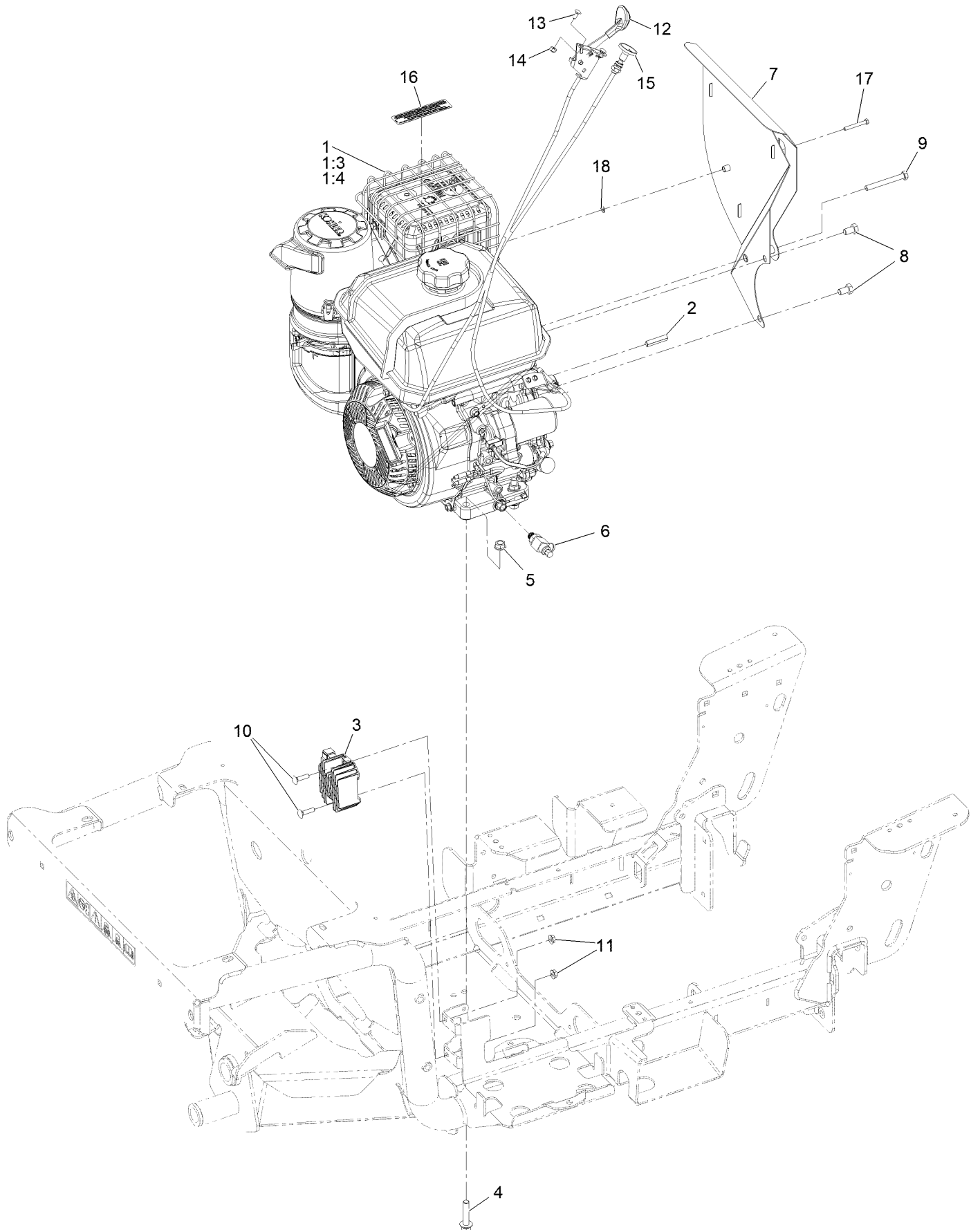
Side Deflector Assembly



Side Deflector Assembly (continued)

| <i>Ref.</i> | <i>Part Number</i> | <i>Qty.</i> | <i>Description</i> | <i>Ref.</i> | <i>Part Number</i> | <i>Qty.</i> | <i>Description</i> |
|-------------|--------------------|-------------|-------------------------|-------------|--------------------|-------------|--------------------------|
| 1 | 142-3619 | 1 | Deflector-Side | 4 | 126-0498 | 2 | Screw-HH 1/4-20 X 7/8 SS |
| 2 | 135-2501 | 1 | Bracket-Deflector, Side | 5 | 135-2880 | 2 | Nut-HF |
| 3 | 360-0140 | 2 | Washer-Flat | | | | |

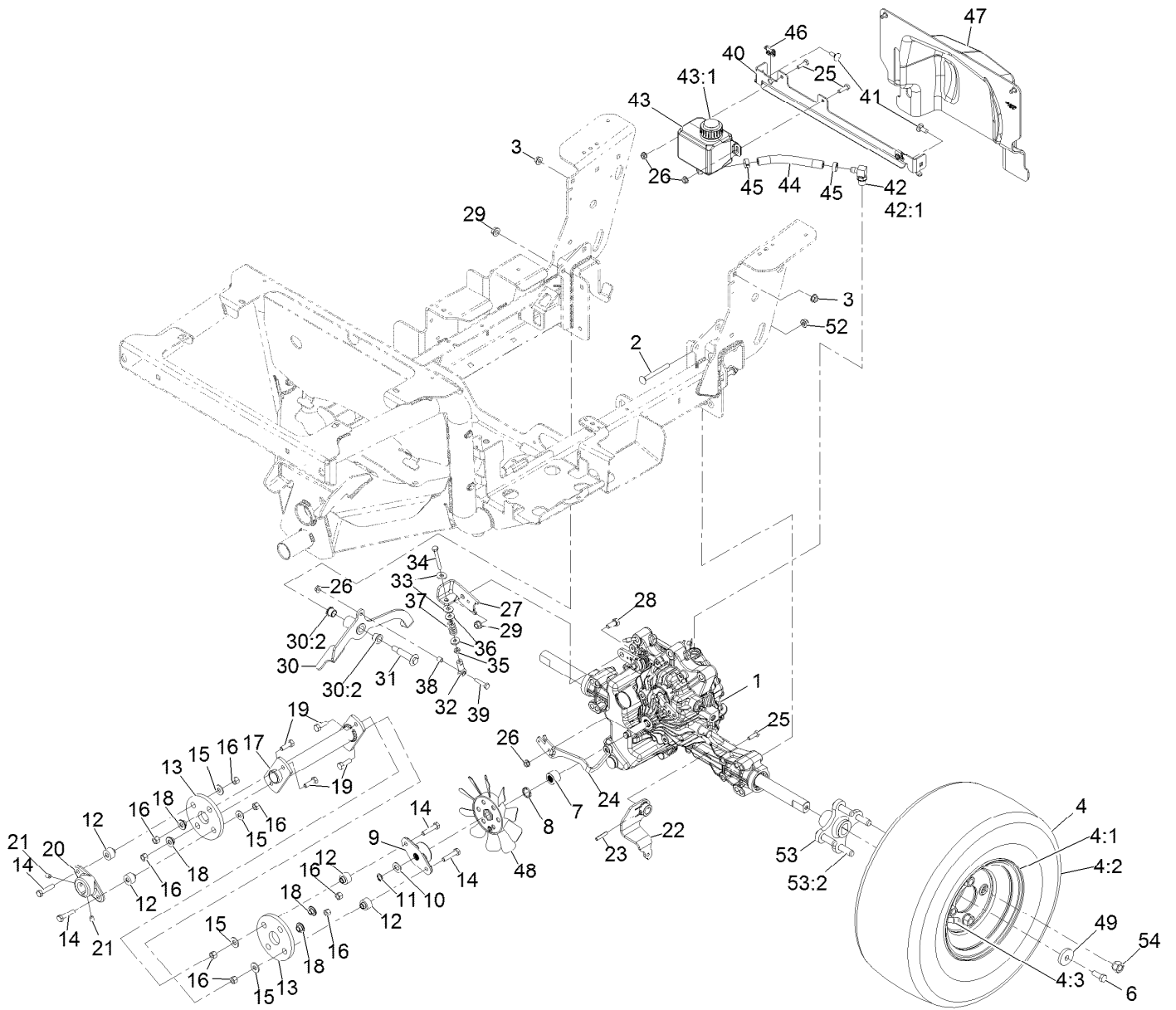
Engine Assembly



Engine Assembly (continued)

| <i>Ref.</i> | <i>Part Number</i> | <i>Qty.</i> | <i>Description</i> | <i>Ref.</i> | <i>Part Number</i> | <i>Qty.</i> | <i>Description</i> |
|-------------|--------------------|-------------|---|-------------|--------------------|-------------|---------------------------------|
| 1 | 126-1359 | 1 | Engine-Kohler, Ch395 | 9 | 120-1177 | 1 | Screw-HH 5/16-24 X 2 3/4 |
| 1:3 | 142-9962 | 1 | Cage-Ch395 17_314_197 Bird | 10 | 126-1455 | 2 | Screw-Carriage 1/4-20 X 1 SS |
| 1:4 | 138-3103 | 1 | Deflector-Exhaust, Kohler | 11 | 135-2880 | 2 | Nut-Hex Flange 1/4-20 SS |
| 2 | 135-3980 | 1 | Key-Square, 7MM | 12 | 135-3149 | 1 | Control-Throttle |
| 3 | 135-7026 | 1 | Regulator-Trombetta, 18A | 13 | 1-807513 | 2 | Bolt-Carriage #10-24 X 1/2 |
| 4 | 126-2710 | 4 | Screw-HHF 3/8-16 X 1 3/4 Serrated SS | 14 | 3296-2 | 2 | Nut-Nyloc #10-24 |
| 5 | 135-2882 | 4 | Nut-Hex Flg 3/8-16 SS W/Patch | 15 | 135-3150 | 1 | Cable-Choke, Push/Pull |
| 6 | 126-9978 | 1 | Valve-Drain, Oil | 16 | 133-8062 | 1 | Decal-Arrestor, Spark |
| 7 | 126-2225 | 1 | Heat Shield ASM | 17 | 135-4328 | 1 | Bolt-M5X0.8Mm X 40 MM Long |
| 8 | 115-8486 | 2 | Screw-HH 3/8-16 X 5/8 W/Patch | 18 | 126-0759 | 1 | Washer-Flat |

Ground Drive Assembly

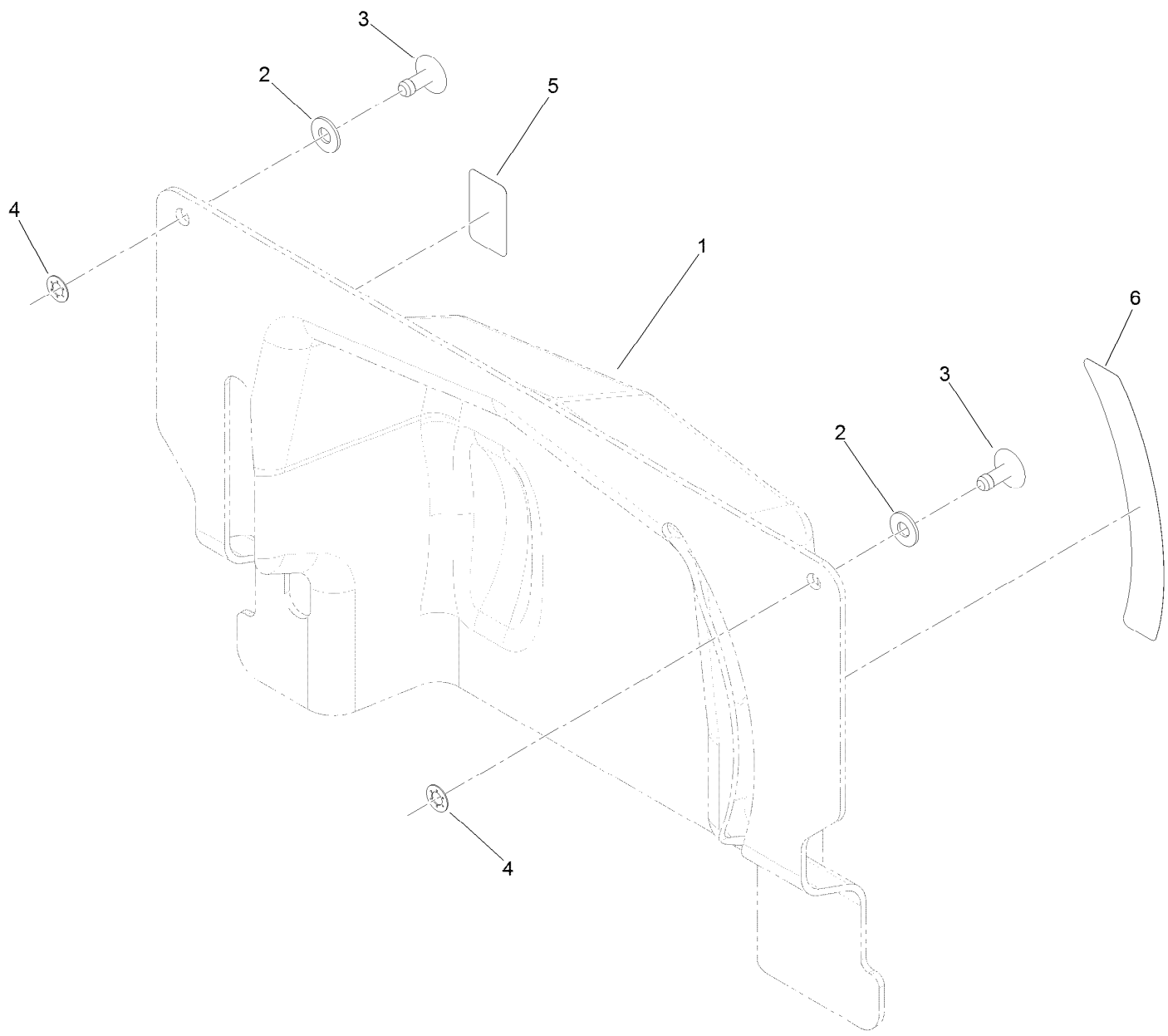


Ground Drive Assembly (continued)

| <i>Ref.</i> | <i>Part Number</i> | <i>Qty.</i> | <i>Description</i> | <i>Ref.</i> | <i>Part Number</i> | <i>Qty.</i> | <i>Description</i> |
|-------------|--------------------|-------------|---------------------------------------|-------------|--------------------|-------------|------------------------------------|
| 1 | 126-2814 | 1 | Transaxle | 27 | 126-3937-03 | 1 | Arm-Brake |
| 1:99 | 126-9688 | 1 | Kit-Seal ● | 28 | 126-0520 | 1 | Screw-HH 3/8-16 X 7/8 SS |
| 1:99 | 135-3175 | 1 | Kit-Transmission Seal ● | 29 | 135-2882 | 2 | Nut-HF |
| 1:99 | 142-4793 | 1 | Plug-Bore 20 ● | 30 | 126-0433 | 1 | Brake Lever ASM |
| 2 | 3230-26 | 4 | Screw-CARR | 30:2 | 116-4279 | 2 | Bearing-Flange |
| 3 | 135-2881 | 2 | Nut-HF | 31 | 92-1057 | 1 | Bolt-Shoulder |
| 4 | 142-2738 | 2 | Wheel And Tire ASM(18X7.5-8) Black | 32 | 2411-41 | 1 | Rod End-Ball Joint |
| 4:1 | 119-8907 | 1 | Tire-4 Ply | 33 | 1-303334 | 2 | Washer-Spring Disc 5/16 |
| 4:2 | 142-2739 | 1 | Wheel, 8 X 5.375 | 34 | 126-4009 | 1 | Screw-HH |
| 4:3 | 232-27 | 1 | Stem-Valve | 35 | 3220-1 | 1 | Nut-Jam 1/4-28 |
| 6 | 135-1711 | 2 | Screw-HH | 36 | 3256-78 | 2 | Washer |
| 7 | 126-2983 | 1 | Spacer-Shaft, Input | 37 | 1-323245 | 1 | Spring-Compression |
| 8 | 3290-317 | 1 | Washer-Spring | 38 | 612503 | 1 | Spacer |
| 9 | 116-9787 | 1 | Hub-Shaft, Transaxle | 39 | 321-8 | 1 | Screw-HH 1/4-20 X 1 1/4 |
| 10 | 605256 | 1 | Spacer | 40 | 126-4423-03 | 1 | Bracket-Mount, Tank |
| 11 | 32151-61 | 1 | Ring-Retaining | 41 | 126-0695 | 2 | Screw-Carriage 5/16-18 X 3/4 SS |
| 12 | 27-6590 | 4 | Spacer-Coupling, Rubber | 42 | 126-2927 | 1 | Fitting-90 DEG |
| 13 | 115-4523 | 2 | Coupling-Rubber | 42:1 | 237-42 | 1 | O-Ring |
| 14 | 3210-8 | 4 | Screw-HH 5/16-24 X 1 1/2 | 43 | 126-2578 | 1 | Tank ASM |
| 15 | 3256-3 | 4 | Washer-5/16 Std | 43:1 | 126-2579 | 1 | Cap-Tank |
| 16 | 32152-5 | 8 | Nut-Hex 5/16-24 | 44 | 126-2842 | 1 | Hose-Expansion |
| 17 | 135-5223-03 | 1 | Shaft-Drive | 45 | 126-3749 | 2 | Clamp |
| 18 | 125-9249 | 4 | Spacer-Coupler, Rubber | 46 | 119-1730 | 2 | Receptacle-Clip, Mini |
| 19 | 3210-5 | 4 | Screw-HH | 47 | 126-1462 | 1 | Transaxle Cover ASM |
| 20 | 116-9788 | 1 | Hub-Shaft, Engine | 48 | 126-2980 | 1 | Fan-7 Inch |
| 21 | 3246-18 | 2 | Setscrew-5/16-18 X 3/8 | 49 | 1-543610 | 2 | Washer |
| 22 | 126-6243-03 | 1 | Arm-Motion | 52 | 104-8300 | 4 | Nut-Nyloc 5/16-18 Flg |
| 23 | 126-4295 | 1 | Pin-Spiral | 53 | 126-9884 | 2 | Wheel Hub ASM |
| 24 | 126-2811-03 | 1 | Arm-Release | 53:2 | 10-6830 | 4 | Stud-Type, Drive |
| 25 | 126-0498 | 3 | Screw-HH 1/4-20 X 7/8 SS | 54 | 242-50 | 4 | Nut-Lug 1/2-20 |
| 26 | 135-2880 | 4 | Nut-HF | | | | |

● Not illustrated

Transaxle Cover Assembly No. 126-1462

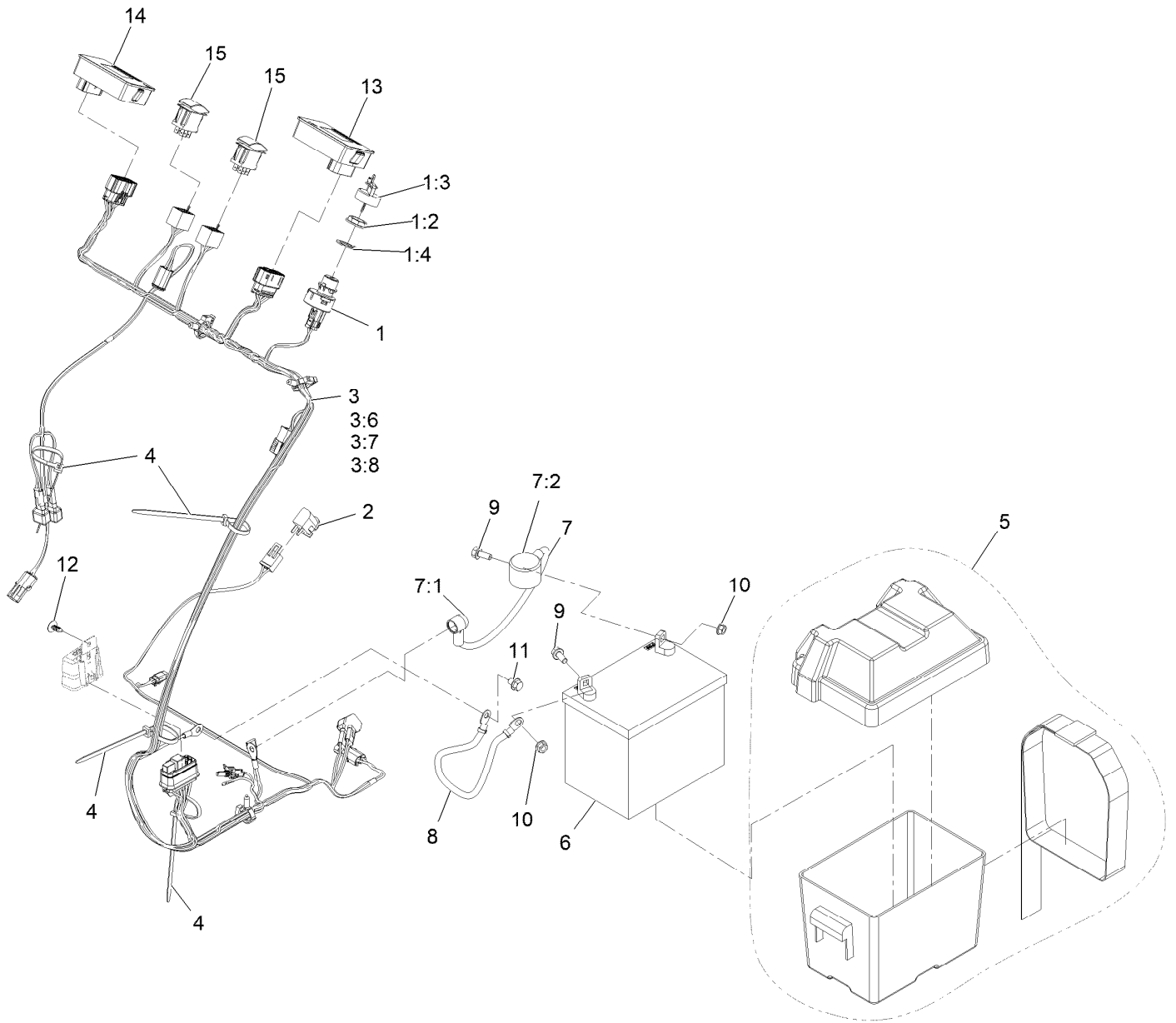


Transaxle Cover Assembly No. 126-1462 (continued)

| <i>Ref.</i> | <i>Part Number</i> | <i>Qty.</i> | <i>Description</i> | <i>Ref.</i> | <i>Part Number</i> | <i>Qty.</i> | <i>Description</i> |
|-------------|--------------------|-------------|--------------------|-------------|--------------------|-------------|----------------------|
| 1 | | 1 | Cover-Transaxle ● | 4 | 119-1729 | 2 | Retainer-Stud |
| 2 | 360-0140 | 2 | Washer-Flat | 5 | 126-2620 | 1 | Decal-Brake, Park |
| 3 | 119-1728 | 2 | Stud-1/4 Turn | 6 | 126-2621 | 1 | Decal-Release, Drive |

● Not serviced separately

Electrical Assembly



Electrical Assembly (continued)

| <i>Ref.</i> | <i>Part Number</i> | <i>Qty.</i> | <i>Description</i> | <i>Ref.</i> | <i>Part Number</i> | <i>Qty.</i> | <i>Description</i> |
|-------------|--------------------|-------------|----------------------------|-------------|--------------------|-------------|--|
| 1 | 126-6285 | 1 | Ignition Switch ASM | 7:1 | 1-543393 | 1 | Insulator-Solenoid |
| 1:2 | 108-8660 | 1 | Nut-Mounting | 7:2 | 109-2407 | 1 | Insulator-Battery |
| 1:3 | 106-5270 | 1 | Ignition Key Set | 8 | 114-9715 | 1 | Cable-Battery, Negative |
| 1:4 | 108-8659 | 1 | Washer-Backup | 9 | 126-2712 | 2 | Screw-HHF 5/16-18 X 3/4 Serrated SS |
| 2 | 82-2190 | 1 | Switch | 10 | 135-2881 | 2 | Nut-HF |
| 3 | 135-6127 | 1 | Harness-Wire | 11 | 68-9410 | 1 | Screw-HHF |
| 3:6 | 121-8868 | 2 | Fuse-Mini Blade, 20 Amp | 12 | 117-2382 | 1 | Plug-Plastic |
| 3:7 | 126-3991 | 1 | Relay-Micro | 13 | 135-6674 | 1 | Hour Meter ASM |
| 3:8 | 135-5221 | 1 | Relay-Coil, NC, Mp280 | 14 | 135-6675 | 1 | Hour Meter ASM |
| 4 | 3290-378 | 4 | Tie-Cable | 15 | 100-1535 | 2 | Switch-Rocker, (On)-Off-(On) |
| 5 | 126-1424 | 1 | Battery Box | | | | |
| 6 | | 1 | Battery ● | | | | |
| 7 | 135-4669 | 1 | Positive Battery Cable ASM | | | | |

● Not serviced separately

Notes:

Notes:

Notes:



MAXIMIZE THE PERFORMANCE OF YOUR EXMARK MACHINE.



EXMARK® PREMIUM ENGINE OIL

Exmark now offers a family of engine oil viscosities to perform well in any environment. Each viscosity has the same synthetic formulation to give you what you need in punishing conditions. We designed each grade to the highest quality, making it ideal even for diesel applications. Coupled with Exmark Premium Fuel Treatment, we have the performance products to make your machine hum.

EXMARK PREMIUM ENGINE OIL SAE 30/10W-30

- Meets zero shear requirements of a straight grade SAE 30 as well as the cold temp properties of a 10W-30.
- Most versatile oil in the industry.
- Superior corrosion protection over conventional oil - even in corrosive, humid environments.

EXMARK PREMIUM ENGINE OIL SAE 20W-50

- Perfect for your big block engine, or any application in severe service.
- Same full synthetic formulation as all other Exmark Premium viscosities.
- Also effective for use in severe service small block engines.

EXMARK PREMIUM ENGINE OIL SAE 10W-50

- Full synthetic formulation gives you peak performance. Don't settle for less.
- Wide span multi-grade combines easy starting in cold weather with maximum protection in high temperature operation.
- Reduce friction & wear over standard mineral formulations.

EXMARK PREMIUM ENGINE OIL SAE 0W-40

- The perfect choice for when the weather turns cold or unpredictable, and your Exmark UTV has to perform.
- Commercial quality for severe service.
- Advanced additive package helps prevent corrosion from long-term storage.

EXMARK PREMIUM ENGINE OIL UTV FORMULATION

- 4-cycle high-temp formulation.
- Heavier viscosity, full synthetic, perfect for your UTV.

EXMARK PREMIUM UTV EXTREME CONDITIONS GEAR OIL

- SAE 80W-90, designed to keep your UTV performing at its peak.
- Shear stable, hypoid gear lube.
- Includes a premium additive system to combat wear, oxidation, rust & corrosion.

Available from your local Exmark dealer. Find your closest dealer at exmark.com

Place Model No. and Serial No.
Label Here (Included in the Literature
Pack) or Fill in Below

Model No. _____

Serial No. _____

Date Purchased _____

Engine Model No. and Spec. No. _____

Engine Serial No. (E/No) _____



Z Turf Equipment is part of the Exmark® family of products.
©2022 Exmark Mfg. Co., Inc. All Rights Reserved. Printed in the USA.
415 Industrial Row • Beatrice, NE 68310 • (402) 223-6300

www.zturfequipment.com

