



# Twister™ 1600

## Utility Vehicle

Model No. 12004—220000001 and Up

## Parts Catalog

---

### Ordering Replacement Parts

To order replacement parts, please supply: the part number, the quantity, and the description of each part desired.

### Understanding Reference Numbers

Each identified part in an illustration has a reference number. The reference number for a part also appears in the parts list, along with other information about the part.

This catalog uses two special reference number formats, one to indicate parts in a service assembly and another to indicate the quantity of a given part in an illustration.

### Service Assembly Reference Numbers

Parts in service assemblies have reference numbers in the form **a:b**. The **a** represents the reference number of the entire service assembly and the **b** represents a sequential number unique to each part within the service assembly.

For example, a wheel assembly might be identified by reference number **6**, the tire by **6:1**, the valve by **6:2**, and the wheel by **6:3**. When you order the assembly identified by reference number **6**, you receive all parts identified by reference numbers **6:1**, **6:2**, and **6:3**. However, you may also order any part individually.

Reference numbers of this type appear in illustrations and in part lists.

### Reference Numbers Indicating Quantity

In an illustration, if a reference number indicates more than one part, the reference number has the form **nX y**. The **n** represents the quantity of the part, the **X** is the multiplication symbol, and the **y** represents the reference number.

For example, in an illustration, the reference number **2X 37** means that two of the parts identified by reference number **37** are indicated.

## Contents

Description	Page	Description	Page
Pedal Assembly .....	3	Hood and Fender Assembly .....	22
Shifter Assembly .....	4	Brake and Master Cylinder Assembly .....	23
Frame Assembly .....	5	Left Hand Caliper Assembly No. 104-6801 ...	24
Seatbase Assembly .....	6	Right Hand Caliper Assembly No. 104-6802 ..	25
Front Tire and Steering Assembly .....	7	Master Cylinder Assembly No. 104-6782 .....	26
Rear Tire and Transaxle Assembly .....	8	Electrical Schematic .....	27
Driven Clutch Assembly No. 99-7104 .....	9	Cylinder, Oil Filter and Dipstick Assembly .....	28
Transaxle Assembly No. 104-6898 .....	10	Crankcase Assembly .....	29
Left Hand Brake Assembly No. 104-6807 .....	12	Cylinder Head and Cover Assembly .....	30
Right Hand Brake Assembly No. 104-6806 ...	13	Crankshaft, Piston and Oil Pump Assembly ...	31
Drivetrain Mount Assembly .....	14	Carburetor and Fuel Pump Assembly .....	32
Air Filter Assembly No. 99-7120 .....	15	Manifold Intake and Governor Control Assembly	33
Upper Steering Assembly .....	16	Alternator Assembly .....	34
Steering Gearbox Assembly No. 99-7660 .....	17	Blower Housing and Cover Assembly .....	35
Box and Tailgate Installation Assembly .....	18	Starter Motor Assembly .....	36
Box and Tailgate Assembly .....	19	Replacement Starter Motor Assembly .....	37
Engine and Clutch Assembly .....	20	Engine Gasket Set .....	38
Drive Clutch Assembly No. 99-7939 .....	21	Valve Gasket Set and Carburetor Overhaul Kit	39

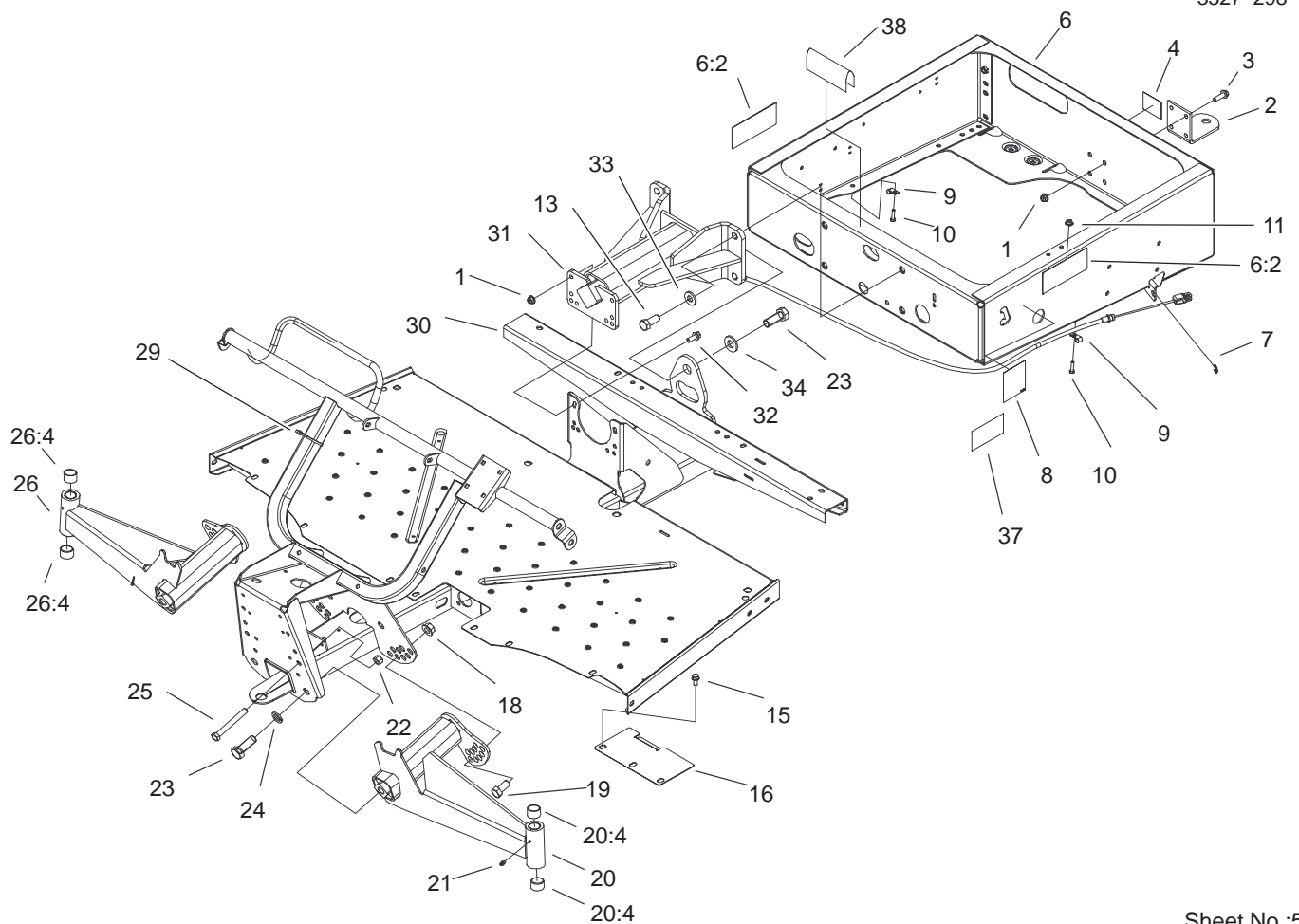
## Part Description Abbreviations

Part descriptions in this catalog may include the following abbreviations.

Abbreviation	Meaning	Abbreviation	Meaning
AR .....	as required	HYD .....	hydraulic
ASM .....	assembly	INC .....	incorporated
CARR .....	carriage	LH .....	left hand
DEG .....	degrees	NI .....	nylon insert
FH .....	flat head	PPH .....	Phillips pan head
GA .....	gauge	PTH .....	Phillips truss head
HF .....	hex flange	PTO .....	power take off
HH .....	hex head	RH .....	right hand
HHF .....	hex head flange	SFH .....	slotted fillister head
HLH .....	hex lag head	SHH .....	slotted hex head
HJ .....	hex jam	SQH .....	square head
HOC .....	height-of-cut	SHWH .....	slotted hex washer head
HS .....	hex socket	SPH .....	slotted pan head
HSBH .....	hex socket button head	SRH .....	slotted round head
HSFH .....	hex socket flat head	STD .....	standard
HSH .....	hex socket head	TAP .....	self tapping
HWH .....	hex washer head	TTH .....	Torx truss head
HWHTF .....	hex washer head thread forming	WH .....	wing head





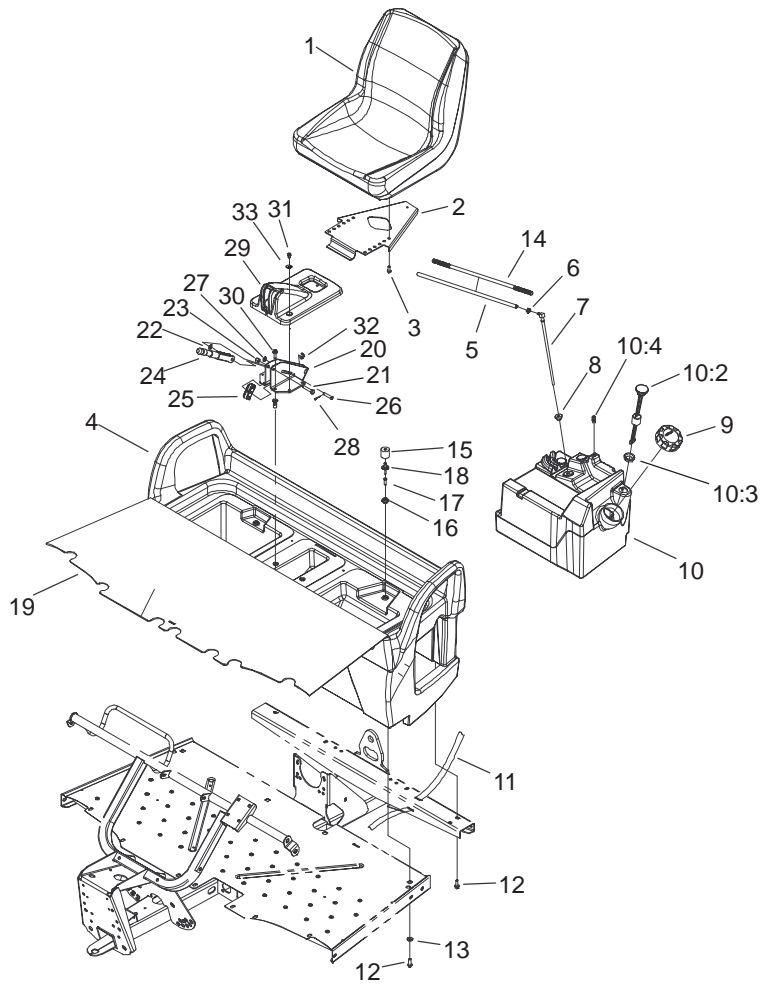


Sheet No.:5

## Frame Assembly

Ref. No.	Part No.	Qty.	Description
1	104-8301	8	Nut-Flange, NI
2	99-7654-03	1	Hitch-Duty, Light
3	3234-24	4	Screw-HHF
4	99-7350	1	Decal-Information
6	99-7362	1	Rear Frame ASM
6:2	99-7345	2	Decal-Warning
7	32120-47	2	Ring-Retaining, External
8	99-7349	1	Decal-Information, Boxlatch
9	2412-89	2	Clamp
10	321-6	2	Screw-HH
11	32128-33	2	Nut-HF
13	327-4	4	Screw-HH
15	3234-5	2	Screw
16	104-6781-03	1	Cover-Pedal
18	32128-54	2	Nut-Flange
19	3214-2	2	Screw-HH
20	99-7685	1	LH A-Arm ASM
20:4	3-0348	2	Bushing
21	302-5	2	Fitting-Grease
22	3296-23	2	Nut-Lock, NI
23	328-24	5	Screw-HH
24	3254-7	4	Washer-Lock/Int
25	325-17	2	Screw-HH
26	99-7684	1	RH A-Arm ASM

Ref. No.	Part No.	Qty.	Description
26:4	3-0348	2	Bushing
29	3290-379	11	Tie-Cable
30	99-7463-03	1	Frame-Front
31	99-7700	1	Pivot Yoke ASM
32	3234-11	4	Screw-HHF
33	99-7667	4	Washer-Flat
34	87-3060	1	Washer-Hardened
37	104-6592	1	Decal-Capacity (Ce)
38	95-5686	1	Trim



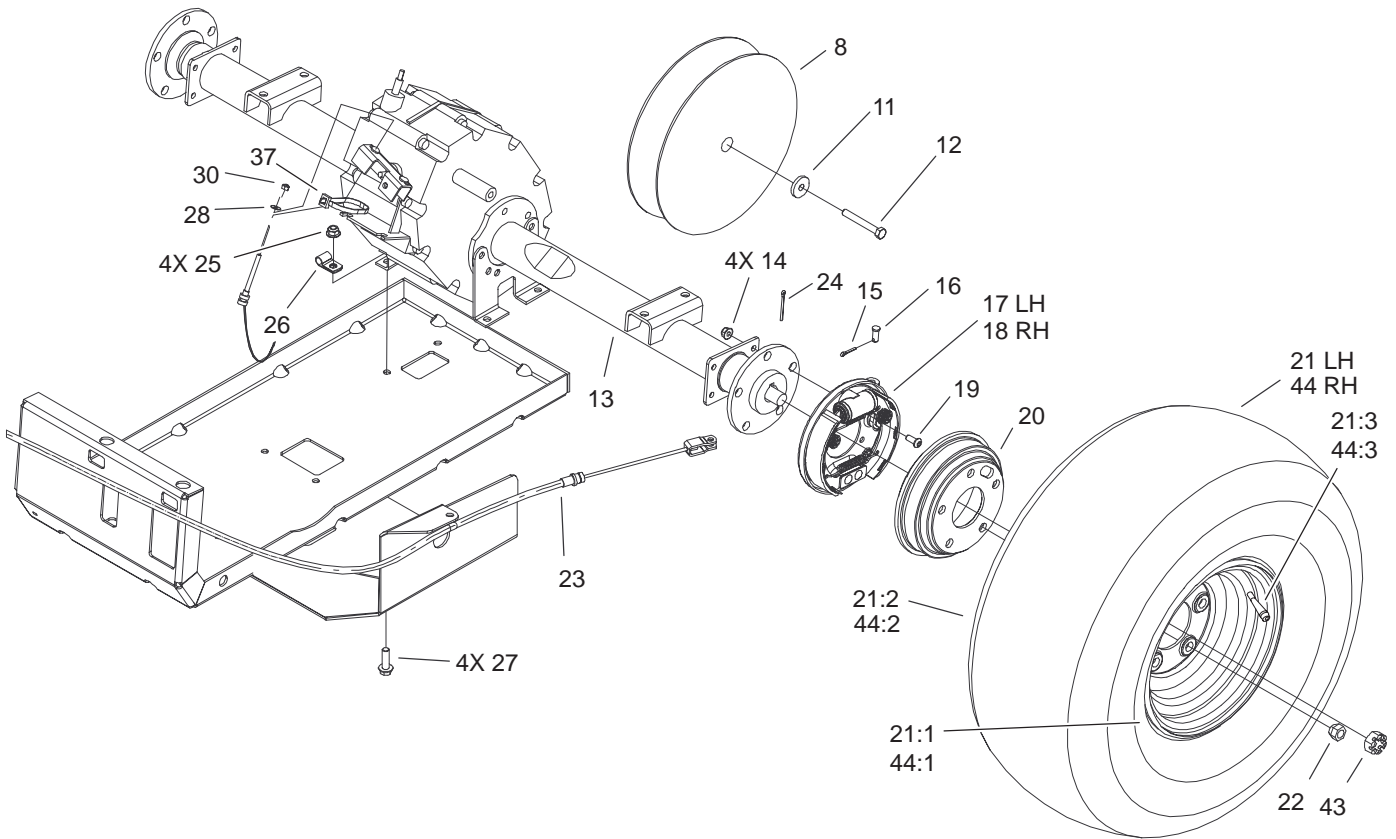
Sheet No.:6

## Seatbase Assembly

Ref. No.	Part No.	Qty.	Description
1	99-7281	2	Seat
2	99-7829	2	Bracket-Seat
3	33114-016	8	Screw-HH
4	104-6847	1	Seat Base ASM
5	99-7187	1	Hose-Fuel
6	2412-98	1	Clamp
7	99-7264	1	Pipe-Stand
8	46-6560	1	Bushing
9	95-4192	1	Unleaded Gas Cap ASM
10	99-7323	1	Fuel Tank ASM
10:2	99-7262	1	Gauge-Fuel
10:3	95-8972	1	Grommet
10:4	99-7267	1	Vent-Air
11	3339-175	1	Strapping-Web, 48in
12	3234-17	8	Screw-HHF
13	88-7200	4	Washer-Flat
14	99-7129	1	Conduit-Line, Fuel
15	99-7830	2	Rubber Receptical ASM
16	99-7833	2	Post-Holding
17	32108-5	2	Screw-FH
18	3290-412	2	Rivet
19	104-6590	1	Mat-Floor
20	104-6844-03	1	Support-Brake, Park
21	323-10	1	Screw-HH

Ref. No.	Part No.	Qty.	Description
22	3290-477	1	Washer-Curved
23	3296-39	1	Nut-Lock, NI
24	104-6842	1	Lever-Brake, Park
25	87-3480	1	Bracket-Equalizer, Cable
26	94-3829	1	Pin-Clevis
27	3256-23	1	Washer-Flat
28	3272-6	1	Pin-Cotter
29	104-7014	1	Cover-Brake, Parking
30	3234-17	4	Screw-HHF
31	12-3270	2	Screw
32	32120-47	2	Ring-Retaining, External
33	3256-1	2	Washer-Flat



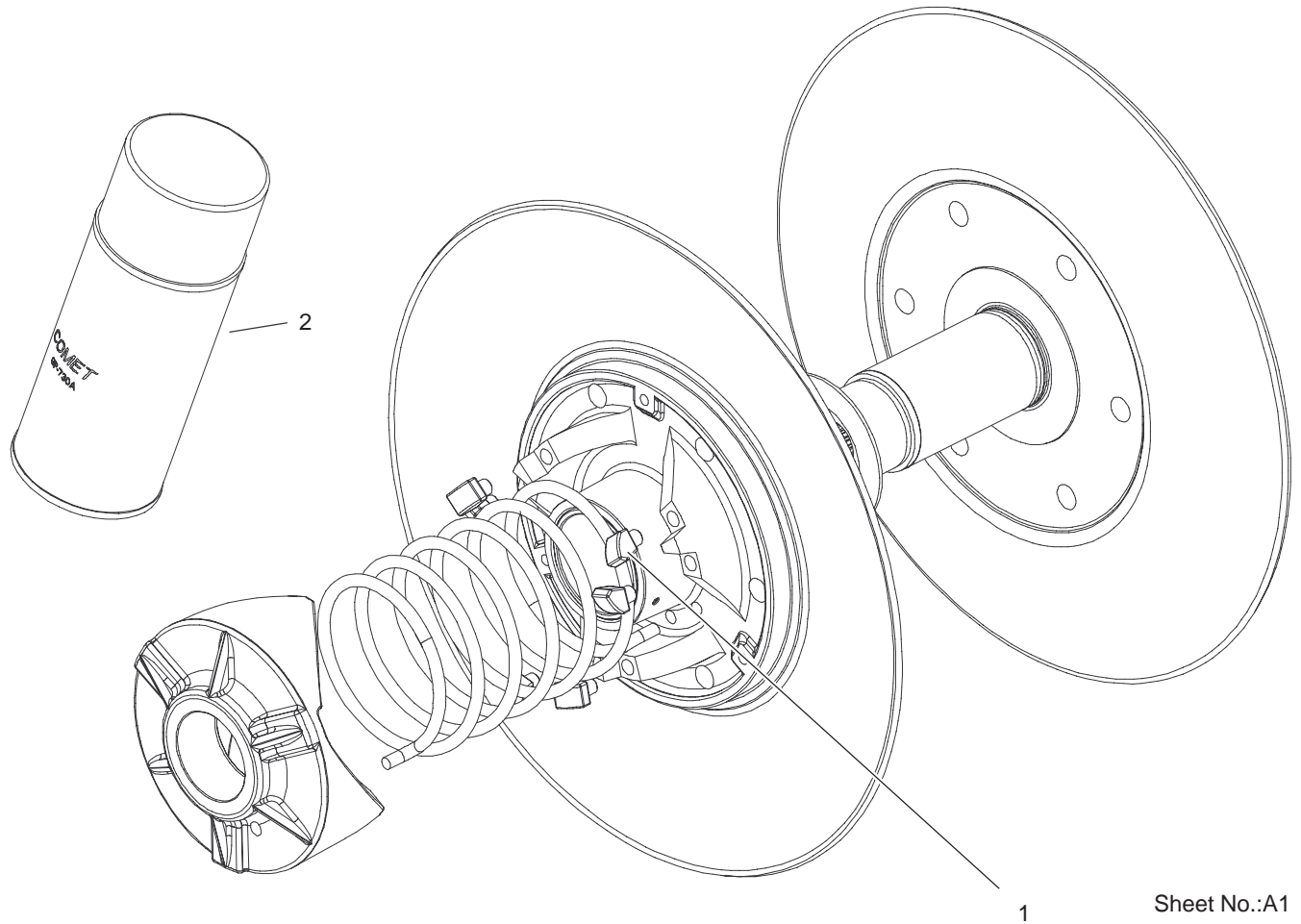


Sheet No.:9

## Rear Tire and Transaxle Assembly

Ref. No.	Part No.	Qty.	Description
8	99-7104	1	Clutch-Driven Drum-Brake
11	104-6563	1	Washer-Clutch
12	104-6564	1	Screw-HH
13	104-6898	1	Transaxle
14	104-8300	8	Nut-Flange, NI
15	3272-10	2	Pin-Cotter
16	283-62	2	Pin-Clevis
17	104-6807	1	LH Brake ASM
18	104-6806	1	RH Brake ASM
19	3274-55	8	Screw-HSBH
20	104-6500	2	Drum-Brake
21	104-6830	1	Tire And Wheel ASM
21:1	104-6889	1	Wheel-5 Bolt
21:2	104-7061	1	Tire
21:3	232-27	1	Stem-Valve
22	242-50	10	Nut-Lug
23	104-6846	2	Cable-Brake, Park
24	3272-42	2	Pin-Cotter
25	104-8301	4	Nut-Flange, NI
26	2412-10	1	R-Clamp
27	3234-24	4	Screw-HHF
28	3256-49	2	Washer-Flat
30	3296-2	2	Nut-Lock
37	3290-378	1	Tie-Cable
43	104-1656	2	Nut-Castle
44		1	Tire And Wheel ASM

Ref. No.	Part No.	Qty.	Description
44:1	104-6889	1	Wheel-5 Bolt
44:2	104-7061	1	Tire
44:3	232-27	1	Stem-Valve



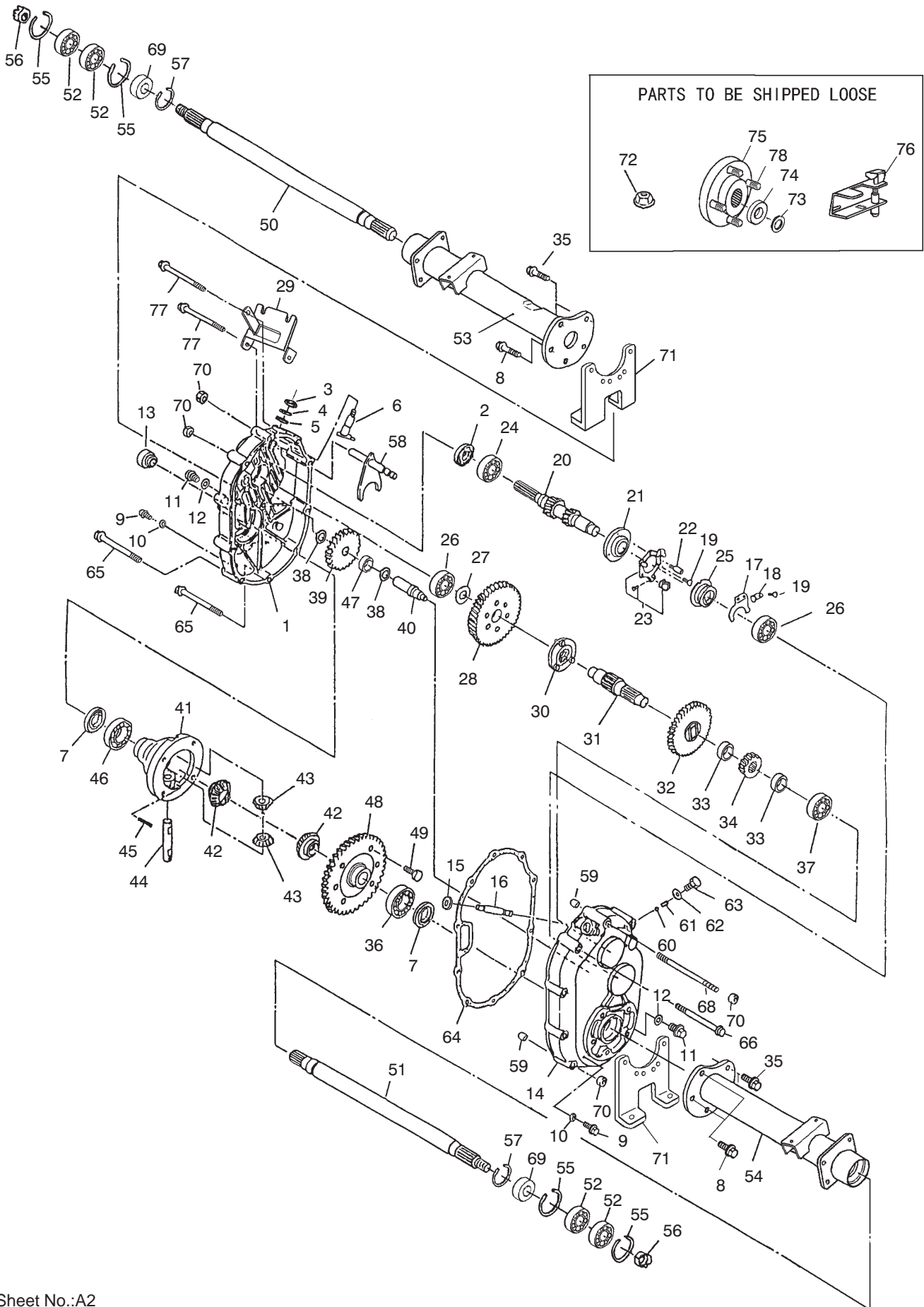
Sheet No.:A1  
T-3579

## Driven Clutch Assembly No. 99-7104

Ref. No.	Part No.	Qty.	Description
1	104-4256	6	Pivot Bolt And Nut Kit
2	104-7011	1	Lubricant-Dry

Ref. No.	Part No.	Qty.	Description

# Transaxle Assembly No. 104-6898

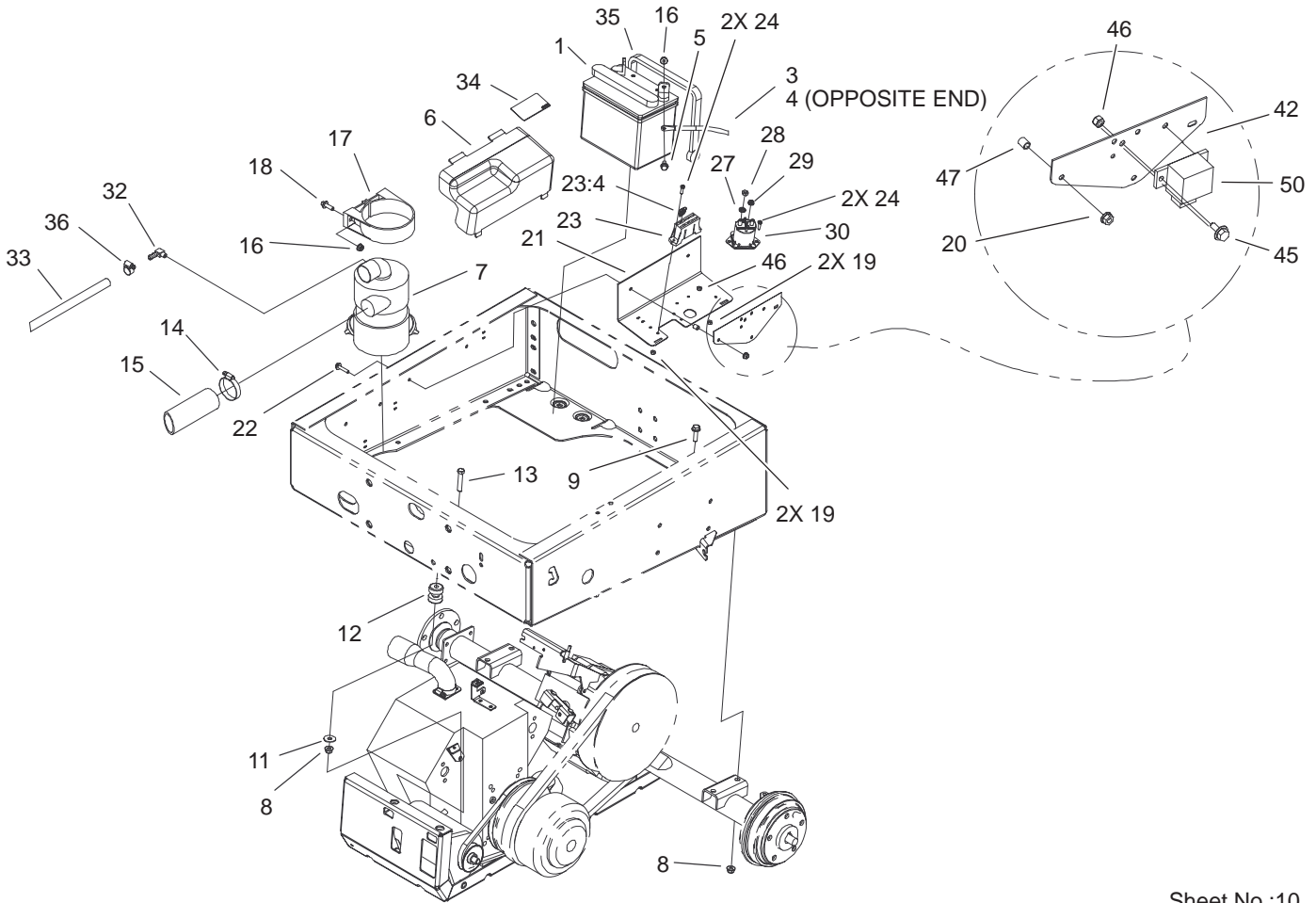


# Transaxle Assembly No. 104-6898

Ref. No.	Part No.	Qty.	Description	Ref. No.	Part No.	Qty.	Description
1	104-1601	1	Case-LH, Complete	60	104-1660	1	Ball-Steel
2	104-1602	1	Seal-Oil	61	104-1661	1	Spring
3	104-1603	1	Seal-Oil	62	104-1662	1	Gasket
4	104-1604	1	Ring-Snap	63	104-1663	1	Bolt
5	104-1605	1	Spacer	64	104-1664	1	Gasket
6	104-1606	1	Shaft-Selector	65	104-1665	6	Bolt-Flange
7	104-1607	2	Seal-Oil	66	104-1666	1	Bolt-Flange
8	104-1608	4	Bolt-Flange	68	104-6866	1	Bolt
9	104-1609	2	Plug-Check, Oil	69	104-6867	2	Collar
10	104-1610	2	Gasket	70	33004-00	11	Nut-HF
11	104-1611	2	Plug-Drain, Oil	71	104-1671	2	Bracket-Axle
12	104-1612	2	Gasket	72	104-1672	1	Nut-Lock
13	104-1613	1	Plug-Filler, Oil	73	104-1673	2	Washer-Spring
14	104-1614	1	Case-Complete, RH	74	104-1674	2	Washer
15	104-1615	1	Seal-Oil	75	104-1675	2	Hub
16	104-1616	1	Shaft-Governor	76	104-6860	1	Lever-Select
17	104-1617	1	Fork-Governor	77	104-6869	2	Bolt-Flange
18	104-1618	1	Stopper	78	104-8649	10	Stud
19	104-1619	4	Screw And Washer ASM				
20	104-7002	1	Shaft-Input, Complete				
21	104-1621	1	Base-Governor				
22	104-1622	1	Pin-Lock				
23	104-1623	1	Unit-Plate, Governor				
24	104-1624	1	Bearing-Ball				
25	104-1625	1	Sleeve-Governor				
26	104-1626	2	Bearing-Ball				
27	104-1627	1	Spacer				
28	104-1628	1	Gear				
29	104-1629	1	Bracket-Wire, Change				
30	104-1630	1	Clutch-Pin				
31	104-1631	1	Shaft-Center				
32	104-1632	1	Gear-47				
33	104-1633	2	Collar				
34	104-1634	1	Gear				
35	104-1635	6	Bolt-Flange				
36	104-1636	1	Bearing-Ball				
37	104-1637	1	Bearing-Ball				
38	104-1638	2	Spacer				
39	104-1639	1	Gear-34				
40	104-1640	1	Shaft-Counter				
41	104-1641	1	Case-Differential				
42	104-1642	2	Gear-Side, Differential				
43	104-1643	2	Pinion-Differential				
44	104-1644	1	Shaft-Differential				
45	104-1645	1	Pin				
46	104-1646	1	Bearing-Ball				
47	104-1647	1	Bearing-Needle				
48	104-1648	1	Gear-62				
49	104-1649	6	Bolt				
50	104-1650	1	Shaft-Axle, LH				
51	104-1651	1	Shaft-Axle, RH				
52	104-1652	4	Bearing-Ball				
53	104-1653	1	Case-Axle, LH				
54	104-1654	1	Case-Axle, RH				
55	104-1655	4	Ring-Snap				
56	104-1656	2	Nut-Castle				
57	104-1657	2	Ring-Snap				
58	104-6870	1	Shaft-Shift, Complete				
59	104-1659	2	Knock-Pipe				







Sheet No.:10

## Drivetrain Mount Assembly

Ref. No.	Part No.	Qty.	Description
1	92-1678	1	Battery (Dry)
3	99-7428	1	Cable-Negative
4	99-7404	1	Cable-Positive
5	3234-5	2	Screw
6	99-7325	1	Cover-Electrical
7	99-7120	1	Filter-Air
8	104-8301	6	Nut-Flange, NI
9	3234-24	4	Screw-HHF
11	3256-35	2	Washer-Flat
12	95-2596	2	Mount-Iso
13	323-10	2	Screw-HH
14	2412-130	1	Clamp-Hose
15	104-6528	1	Hose-Intake
16	104-8300	4	Nut-Flange, NI
17	95-5806	1	Bracket-Mounting
18	3234-17	2	Screw-HHF
19	3296-2	4	Nut-Lock
20	32128-32	2	Nut-HHF
21	99-7051-03	1	Mount-Component
22	3234-21	2	Screw-Cap
23	99-7439	1	Harness-Wire, Main
23:4	218-578	3	Fuse-10 Amp
24	32105-13	4	Screw-SHH
27	3255-8	2	Washer-Lock/Ext
28	3218-2	2	Nut-Jam
29	32149-8	2	Nut-Keps

Ref. No.	Part No.	Qty.	Description
30	28-4210	1	Solenoid
32	99-7230	1	Fitting-90°
33	99-7842	1	Hose-Breather
34	99-7958	1	Decal-Information
35	99-7197	1	Strap-Epdm
36	2412-36	2	Clamp-Hose
42	99-7370-03	1	Bracket-Ignition
45	3234-13	2	Screw-HHF
46	3296-42	2	Nut-Lock, NI
47	68-0610	2	Spacer
50	66-8800	1	Relay

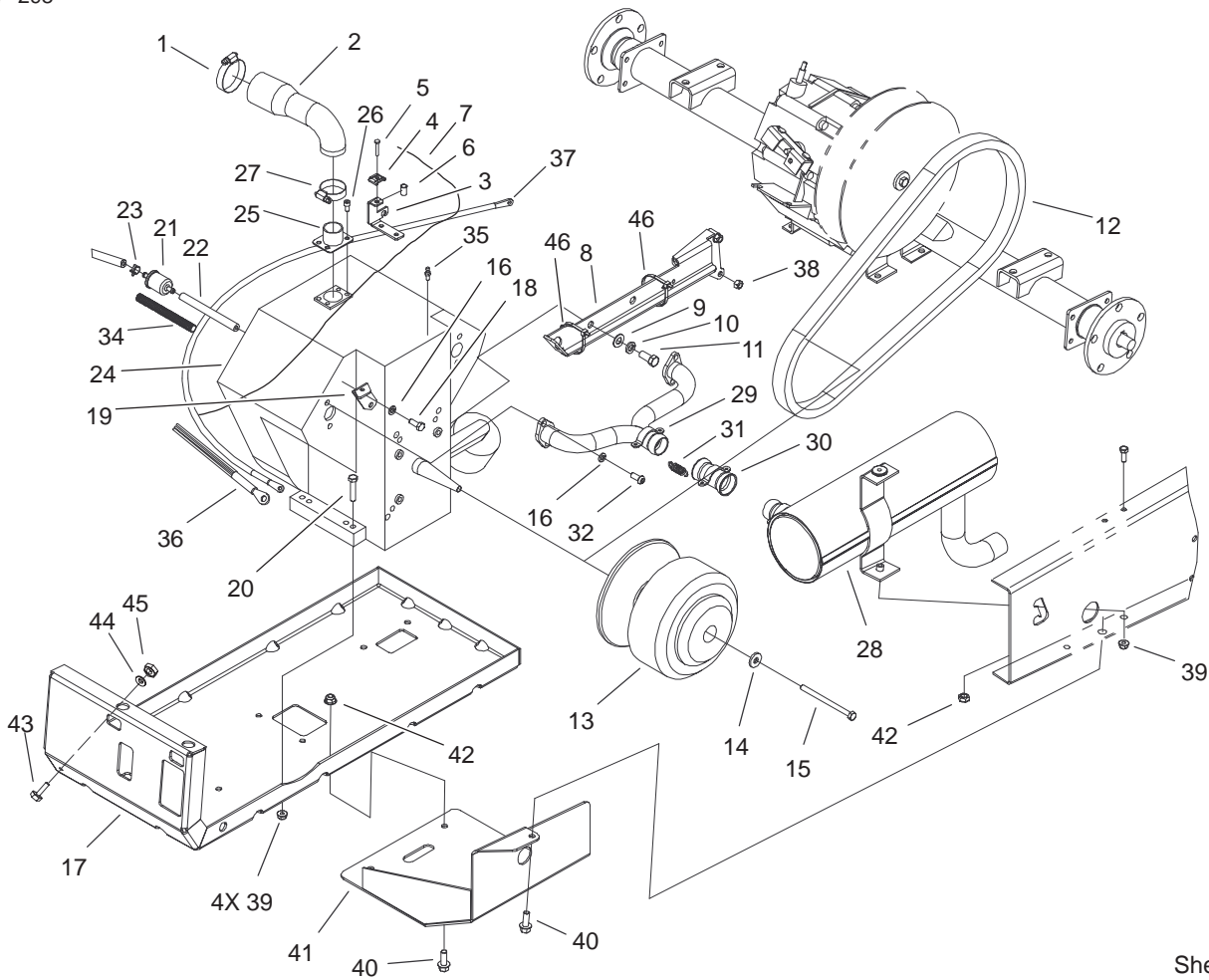










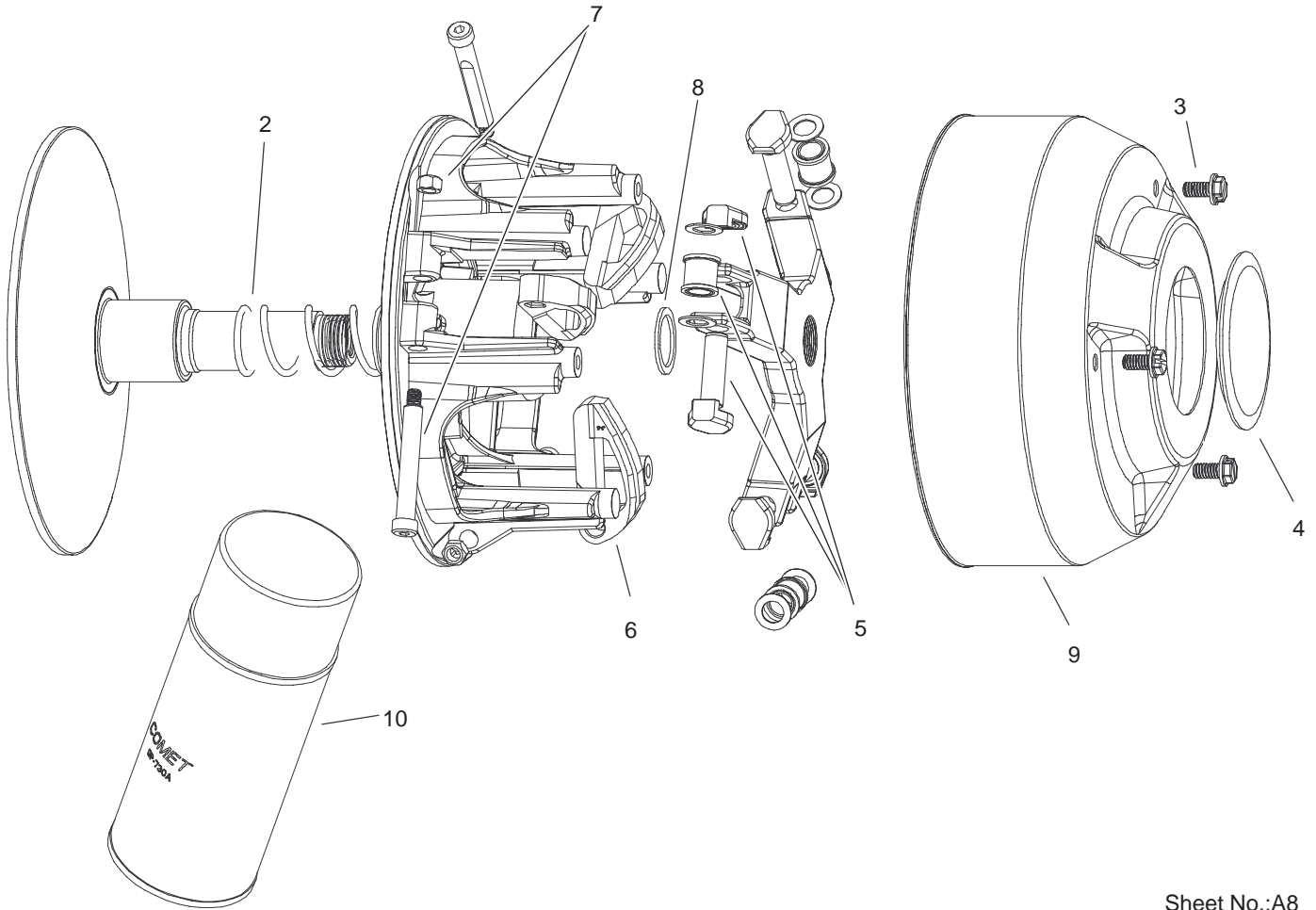


Sheet No.:15

## Engine and Clutch Assembly

Ref. No.	Part No.	Qty.	Description
1	2412-130	1	Clamp-Hose
2	99-7106	1	Hose-Intake
3	99-7097	1	Bracket-Cable
4	81-1690	1	Clamp-Cable
5	3290-432	1	Screw-HH
6	32148-14	1	Insert-Threaded
7	104-6573	1	Cable-Accelerator
8	104-6631-03	1	Torque Arm ASM
9	3256-25	2	Washer-Flat
10	3253-6	2	Washer-Lock
11	324-4	2	Screw-HH
12	99-7144	1	Belt-Drive
13	99-7939	1	Clutch-Drive
14	5-0838	1	Washer
15	99-7201	1	Screw-HH
16	3253-4	6	Washer-Lock
17	104-6433-03	1	Mount-Engine
18	66-3160	2	Screw-Cap
19	99-7119	1	Bracket-Tie, Cable
20	322-8	4	Screw-HH
21	94-2690	1	Filter-Fuel
22	47-2966	1	Hose-Fuel
23	2412-98	3	Clamp
24	104-6649	1	Engine-B/S
25	99-7083	1	Bracket-Intake
26	99-7202	4	Screw

Ref. No.	Part No.	Qty.	Description
27	2412-3	1	Clamp-Hose
28	104-6475	1	Muffler-Engine
29	104-6476	1	Manifold-Engine
30	104-6477	1	Coupler-Exhaust
31	104-6478	4	Spring-Coupler, Exhaust
32	3274-96	4	Screw
34	99-7377	1	Conduit-Line, Fuel
35	99-7847	1	Ball-Stud
36	99-7426	1	Harness-Wire, Engine
37	28-3894	1	Positive Red Wire ASM
38	33024-00	2	Nut-Lock
39	104-8300	5	Nut-Flange, NI
40	3234-11	3	Screw-HHF
41	104-6408-03	1	Clutch-Guard
42	104-8301	3	Nut-Flange, NI
43	321-4	1	Screw-HH
44	3255-8	1	Washer-Lock/Ext
45	32128-32	1	Nut-HHF
46	3290-379	2	Tie-Cable

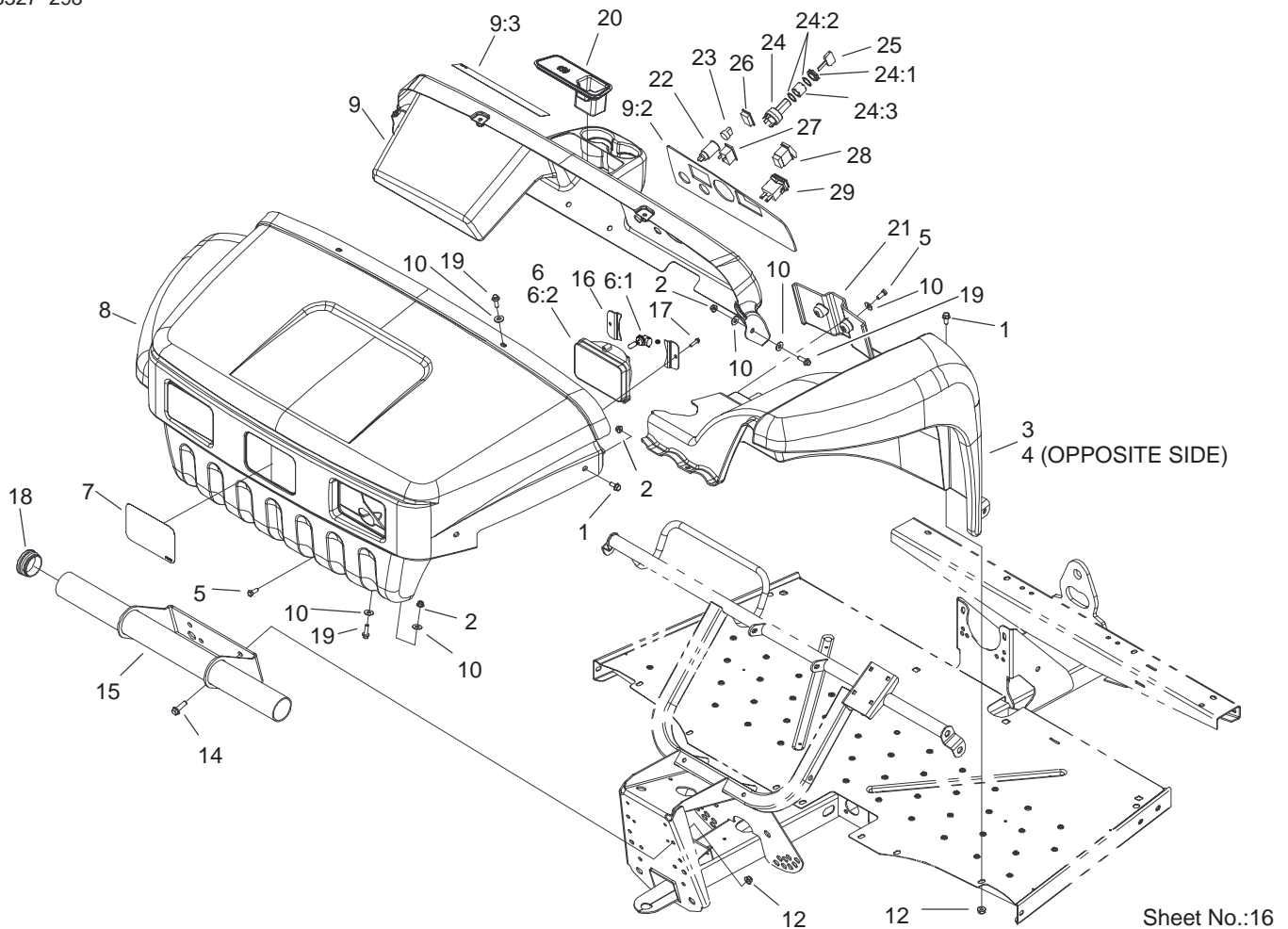


Sheet No.:A8

## Drive Clutch Assembly No. 99-7939

Ref. No.	Part No.	Qty.	Description
2	104-7046	1	Spring
3	3234-26	3	Screw
4	104-1690	1	Cap
5	104-1697	1	Spider Roller Kit
6	104-7043	1	Cam Arm
7	104-4257	1	Button Kit
8	104-1687	1	Spacer
9	104-1691	1	Cover
10	104-7011	1	Lubricant-Dry

Ref. No.	Part No.	Qty.	Description

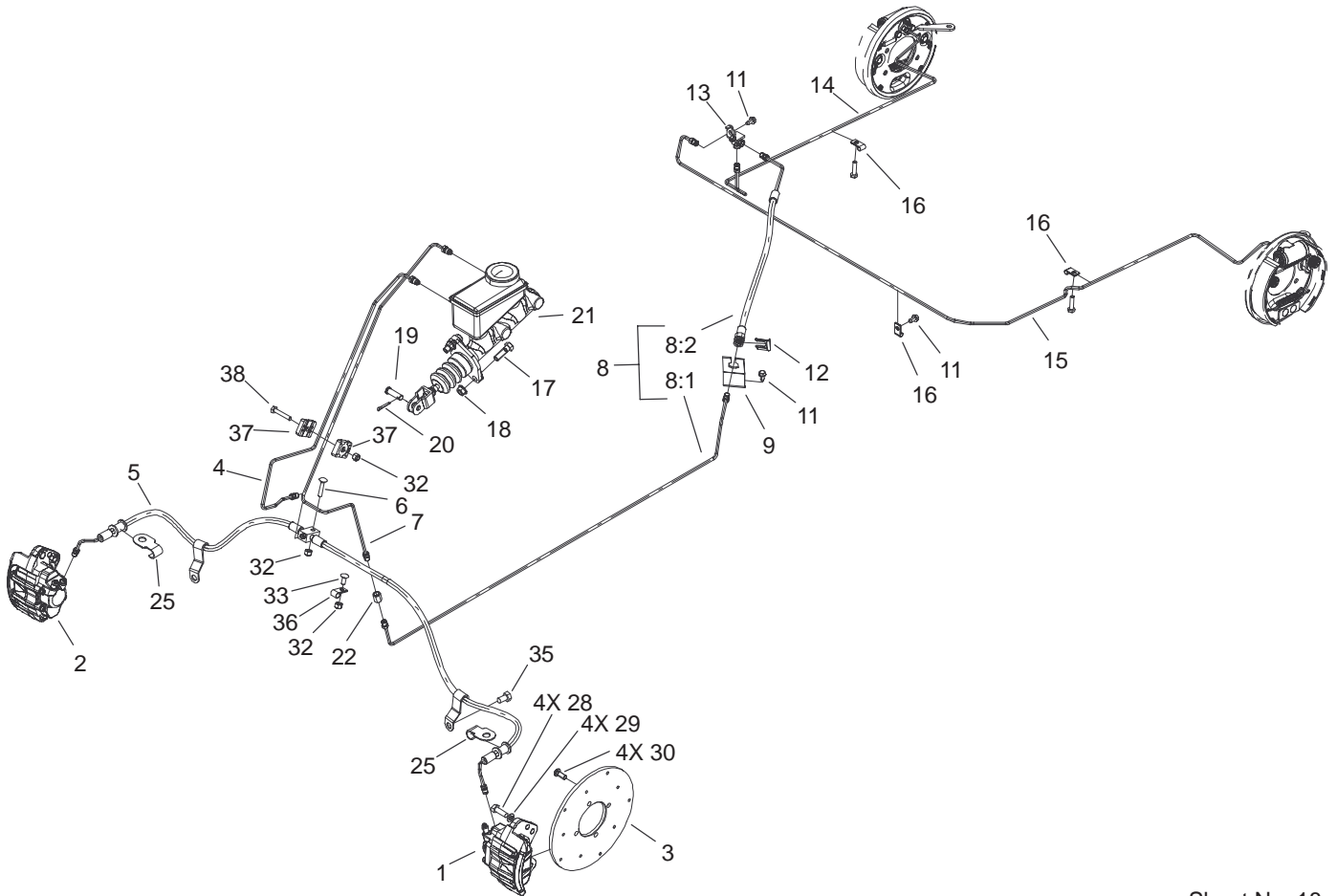


Sheet No.:16

## Hood and Fender Assembly

Ref. No.	Part No.	Qty.	Description
1	3234-5	12	Screw
2	104-8300	14	Nut-Flange, NI
3	104-7078	1	LH Fender ASM
4	104-7079	1	RH Fender ASM
5	32104-32	4	Screw-HH
6	87-2120	2	Headlight
6:1	95-0909	1	Lamp-12 Volt
6:2	87-6330	1	Lens-Headlight
7	62-5550	1	Decal-Toro
8	99-7379	1	Hood ASM
9	104-6848	1	Dash ASM
9:2	99-7951	1	Decal-Warning, Dash
9:3	104-6581	1	Decal-Danger
10	3256-3	12	Washer-Flat
12	104-8301	6	Nut-Flange, NI
14	32144-67	4	Screw
15	99-7840-03	1	Bumper-Tube
16	99-7947	4	Bracket-Headlight
17	99-7331	4	Screw-HWH
18	2410-42	2	Cap-End
19	3234-17	6	Screw-HHF
20	104-6930	1	Plug-Rubber
21	104-7075	1	Cover-Channel
22	99-7411	1	Point-Power
23	99-7416	1	Cap
24	104-6929	1	Switch-Ignition

Ref. No.	Part No.	Qty.	Description
24:1	104-7042	1	Nut-Switch, Plastic
24:2	104-7019	2	Washer-Lock, Internal
24:3	104-7021	1	Spacer-Switch
25	99-7418	2	Key-Ignition
26	99-7420	1	Plug-Hole
27	99-7410	1	Light-Oil
28	95-8999	1	Switch
29	94-4208	1	Hourmeter

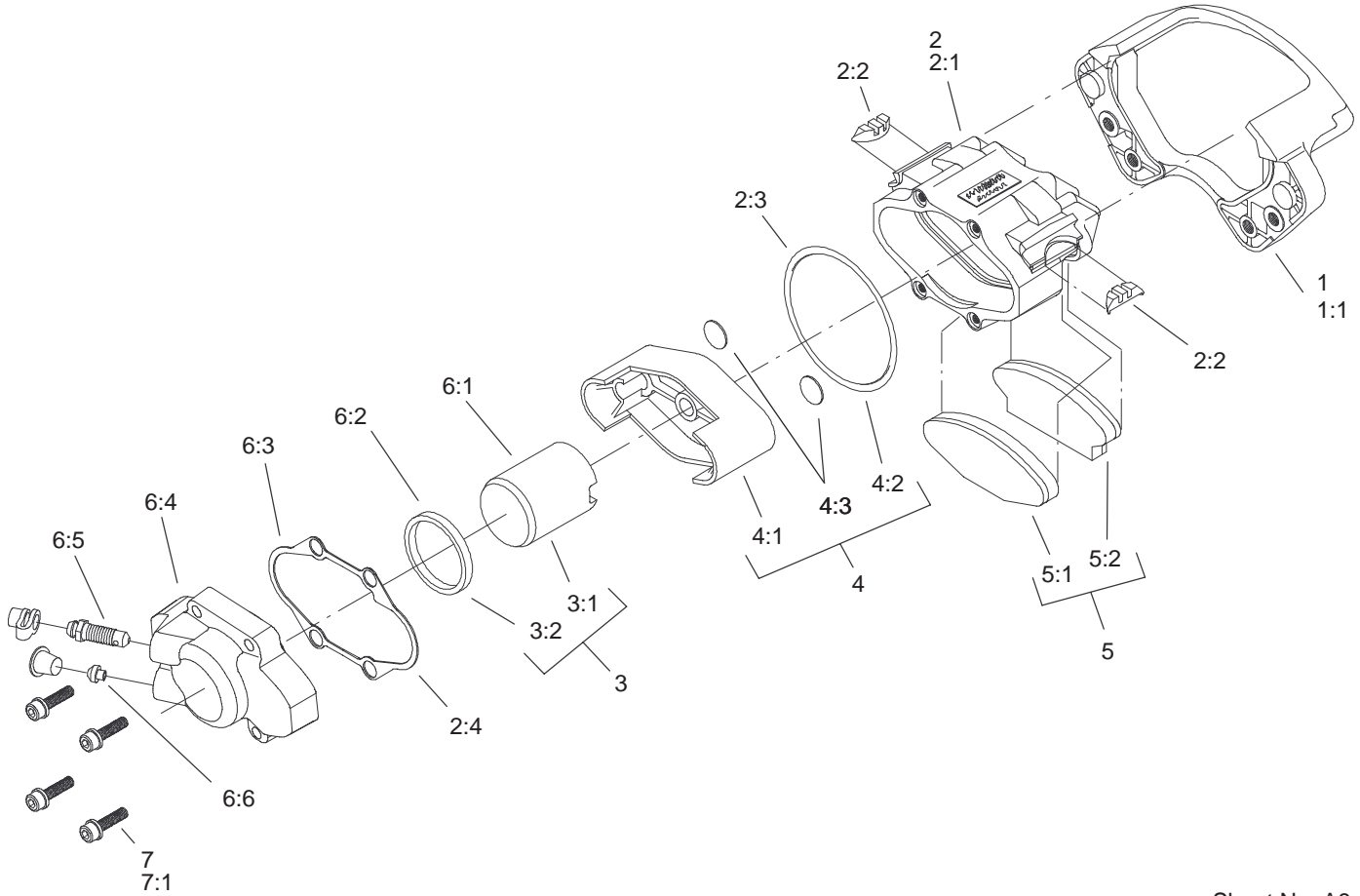


Sheet No.:18

## Brake and Master Cylinder Assembly

Ref. No.	Part No.	Qty.	Description
1	104-6801	1	Caliper-LH
2	104-6802	1	Caliper-RH
3	104-6891	2	Rotor
4	104-6798	1	Tube-Front, Brake
5	104-6792	1	Brake Front Hose ASM
6	3229-3	1	Screw-CARR
7	104-6793	1	Tube-Brake, Rear
8		1	Complete Rear Brake Hose ASM
8:1	104-6794	1	Tube-Brake, Rear
8:2	104-6795	1	Hose-Brake, Rear
9	104-6799	1	Bracket-Hose, Brake
11	12-3270	3	Screw
12	104-7092	1	Clip
13	87-3560	1	Tee
14	104-6796	1	Tube-Brake Rear, RH
15	104-6797	1	Tube-Brake Rear, LH
16	2412-72	3	Clip-Closed, Insulated
17	323-6	2	Screw-HH
18	3290-357	2	Nut-HHF
19	283-2	1	Pin-Clevis
20	3272-10	1	Pin-Cotter
21	104-6782	1	Cylinder-Master
22	87-3570	1	Union
25	104-7073	2	Bracket-Hose

Ref. No.	Part No.	Qty.	Description
28	33114-025	8	Screw-HH
29	3253-4	8	Washer-Lock
30	3274-55	8	Screw-HSBH
32	3296-42	3	Nut-Lock, NI
33	3229-11	1	Screw-CARR
35	32144-14	2	Screw-HH
36	2412-89	1	Clamp
37	87-7660	2	Clamp-Tube
38	321-9	1	Screw-HH



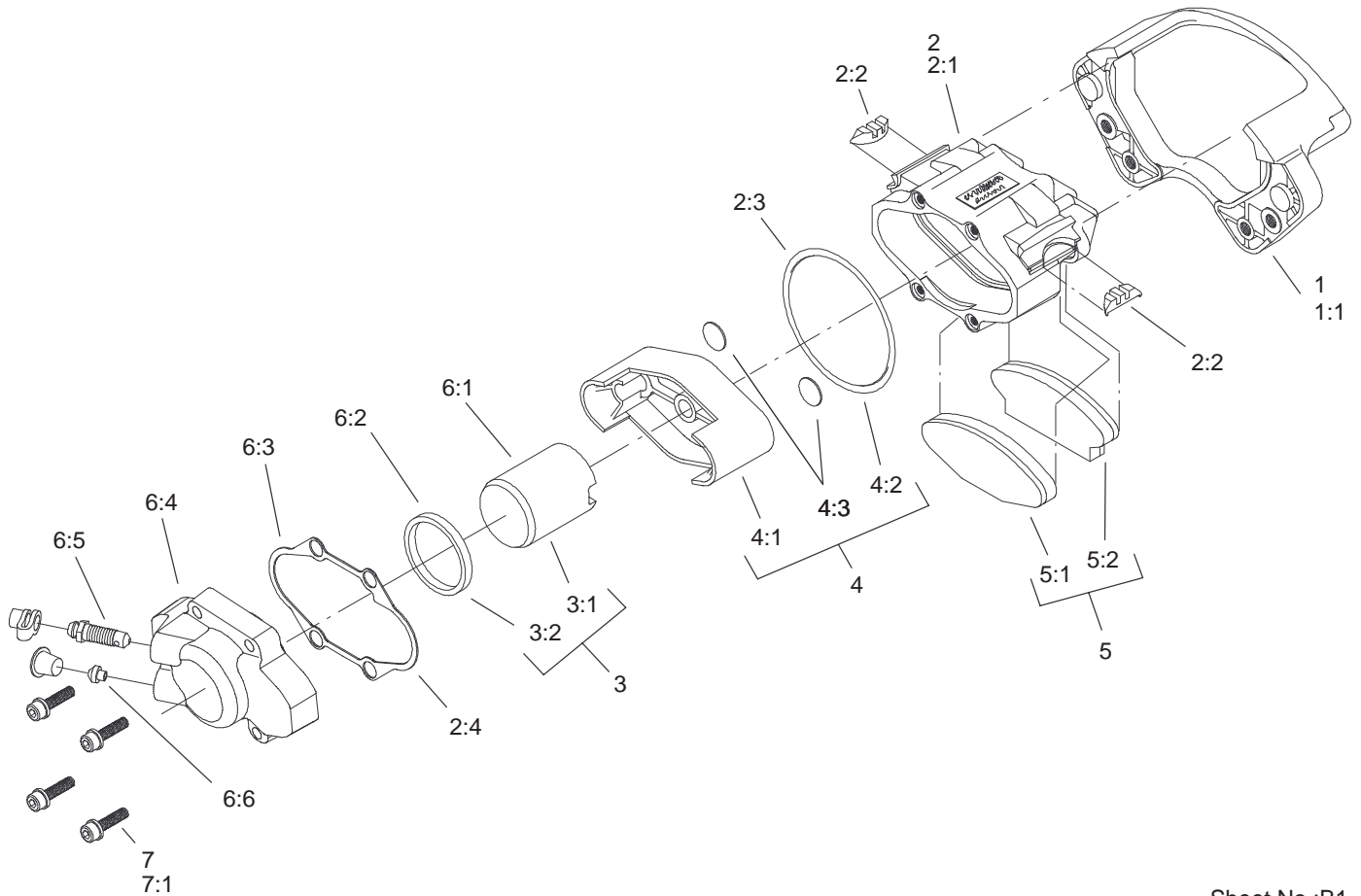
Sheet No.:A9

## Left Hand Caliper Assembly No. 104-6801

Ref. No.	Part No.	Qty.	Description
1	105-9311	1	Bracket Service Kit
☆1:1		1	Bracket
2	105-9312	1	Housing Service Kit
☆2:1		1	Housing
☆2:2		2	Spring-Rubber
☆2:3		1	O-Ring
☆2:4		1	Gasket
3	105-9313	1	Piston & Seal Service Kit
☆3:1		1	Piston-Round
☆3:2		1	Seal-Square
4	105-9314	1	Piston & O-Ring Kit
☆4:1		1	Piston-Oval
☆4:2		1	O-Ring
☆4:3		2	Plug-Piston
5	105-9315	1	Pad Service Kit
☆5:1		2	Pad/Holder ASM
☆5:2		2	Pad/Holder ASM
6	105-9317	1	LH Piston & Cover ASM Kit
☆6:1		1	Piston-Round
☆6:2		1	Seal-Square
☆6:3		1	Gasket
☆6:4		1	Cover
☆6:5		1	Screw-Bleeder
☆6:6		1	Insert-Seat

Ref. No.	Part No.	Qty.	Description
7	105-9318	1	Bolt Service Kit
☆7:1		4	Screw-Cover

☆ Not serviced separately



Sheet No.:B1

## Right Hand Caliper Assembly No. 104-6802

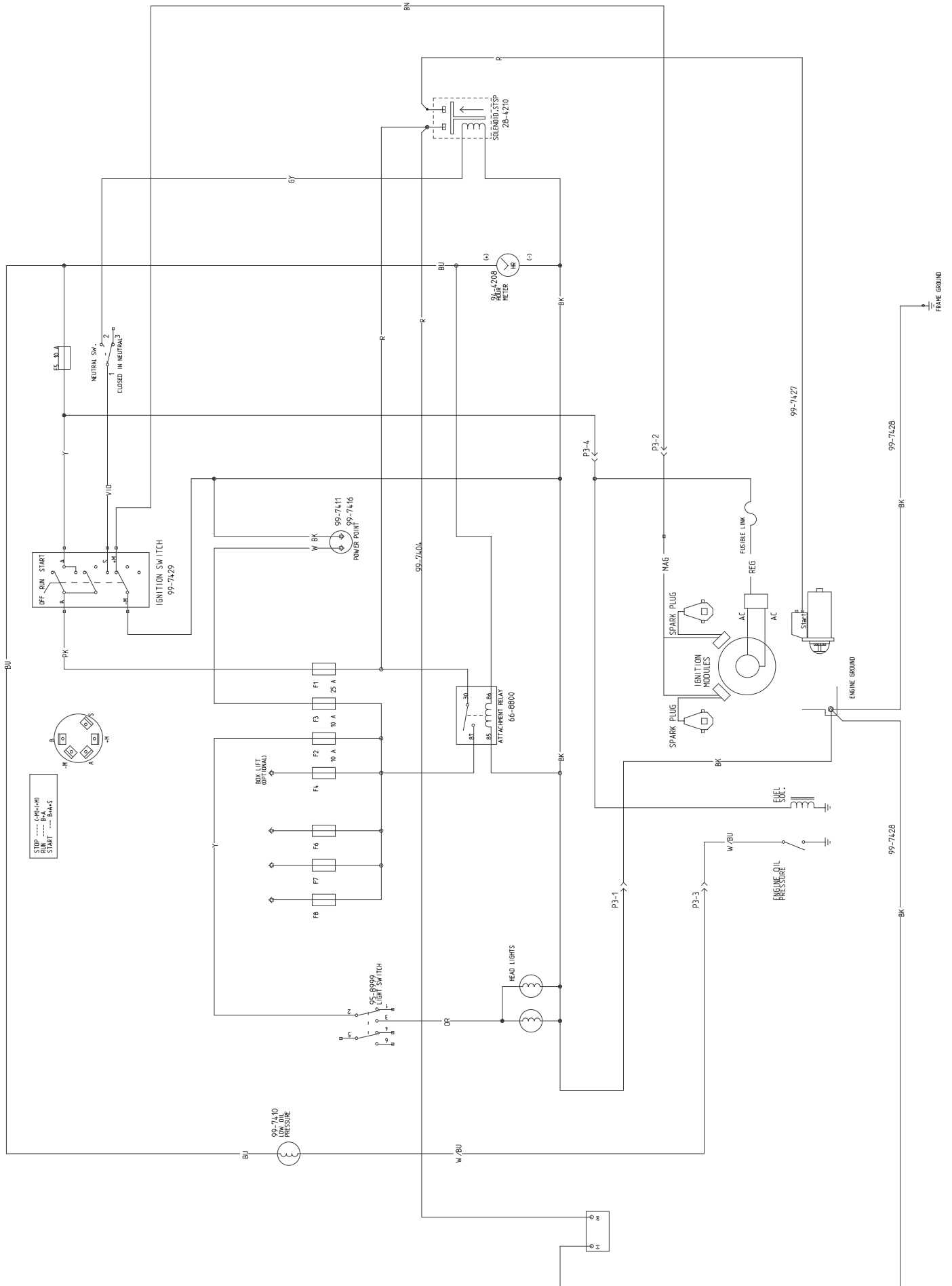
Ref. No.	Part No.	Qty.	Description
1	105-9311	1	Bracket Service Kit
☆1:1		1	Bracket
2	105-9312	1	Housing Service Kit
☆2:1		1	Housing
☆2:2		2	Spring-Rubber
☆2:3		1	O-Ring
☆2:4		1	Gasket
3	105-9313	1	Piston & Seal Service Kit
☆3:1		1	Piston-Round
☆3:2		1	Seal-Square
4	105-9314	1	Piston & O-Ring Kit
☆4:1		1	Piston-Oval
☆4:2		1	O-Ring
☆4:3		2	Plug-Piston
5	105-9315	1	Pad Service Kit
☆5:1		2	Pad/Holder ASM
☆5:2		2	Pad/Holder ASM
6	105-9316	1	RH Piston & Cover ASM Kit
☆6:1		1	Piston-Round
☆6:2		1	Seal-Square
☆6:3		1	Gasket
☆6:4		1	Cover
☆6:5		1	Screw-Bleeder
☆6:6		1	Insert-Seat

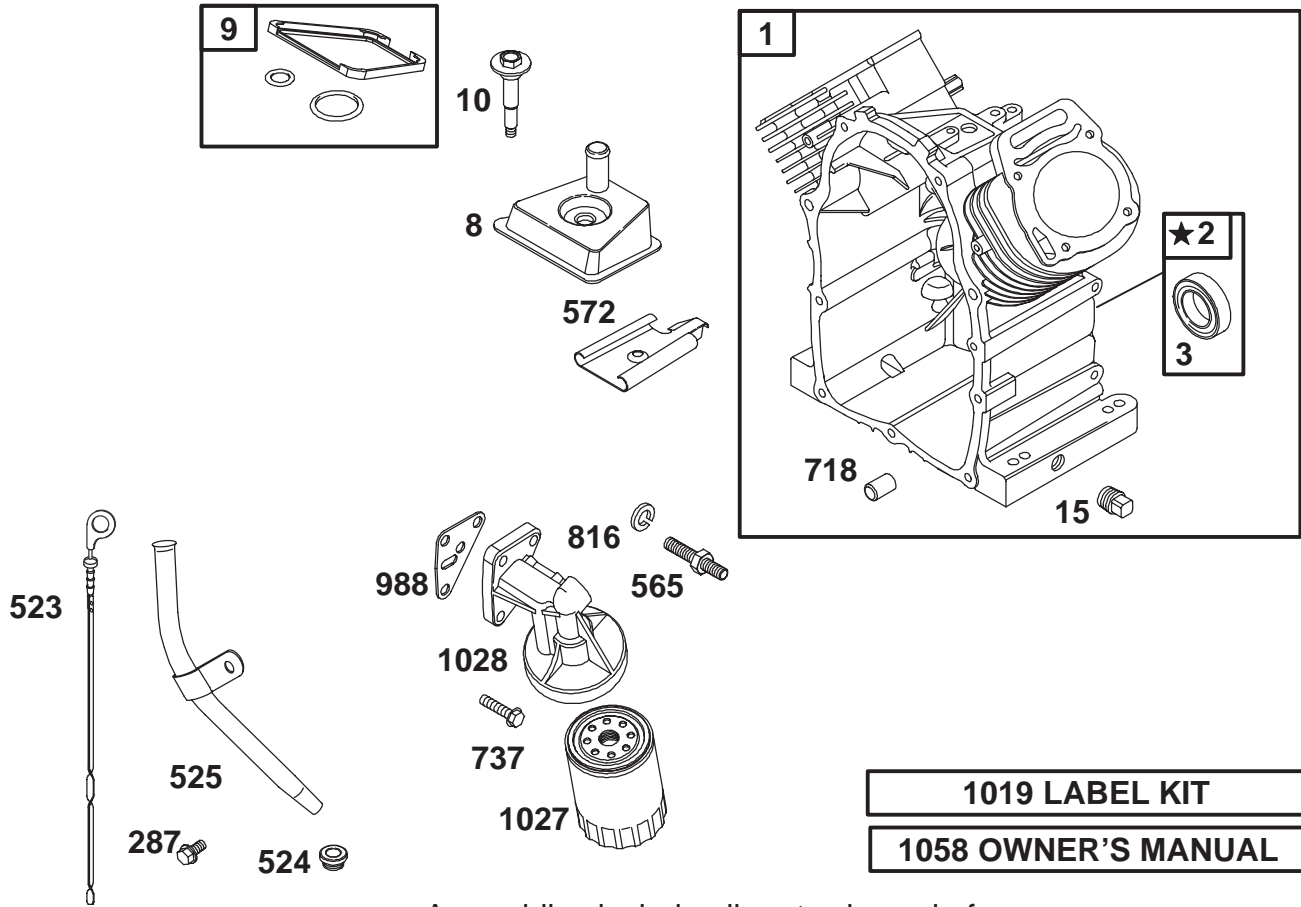
Ref. No.	Part No.	Qty.	Description
7	105-9318	1	Bolt Service Kit
☆7:1		4	Screw-Cover

☆ Not serviced separately



# Electrical Schematic





Assemblies include all parts shown in frames.

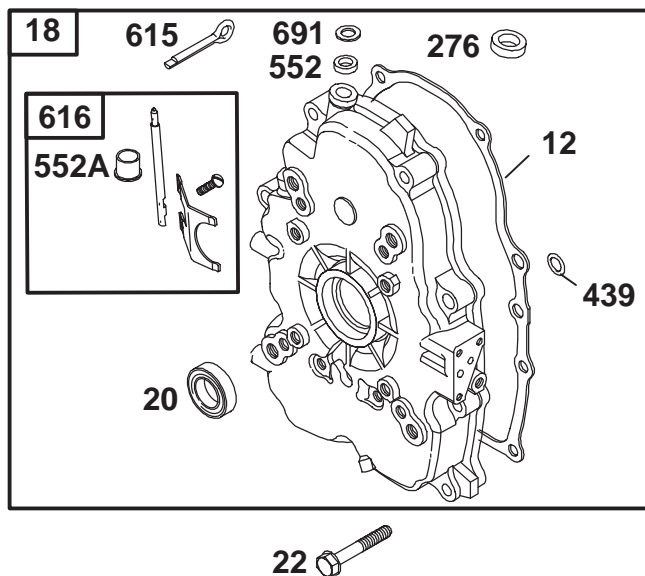
## Cylinder, Oil Filter and Dipstick Assembly

Ref. No.	Part No.	Qty.	Description
1	692178	1	Assembly-Cylinder
2	808534	1	Kit-Bushing/Seal (Magneto Side)
★3	805101	1	Seal-Oil
8	808984	1	Assembly-Breather
★9	807893	1	Gasket-Breather
10	690751	1	Screw (Breather Assembly)
15	690946	1	Plug-Oil Drain
287	692062	1	Screw (Dipstick Tube)
523	693175	1	Dipstick
★524	693172	1	Seal-Dipstick Tube
525	693173	1	Tube-Dipstick
565	690682	1	Stud (Oil Filter Adapter)
572	690686	1	Baffle-Breather
718	690684	1	Pin-Locating
737	690679	1	Screw (Oil Filter Adapter)
816	690706	1	Washer (Oil Filter Adapter)
★988	692063	1	Gasket-Oil Filter

Ref. No.	Part No.	Qty.	Description
1019	808036	1	Adapter Kit-Label
1027	492932	1	Filter-Oil
1028	808235	1	Adapter-Oil Filter
1058	274790	1	Owner's Manual (Emission Engines)

Δ Included in Valve Gasket Set-Ref. 1095.

★ Included in Engine Gasket Set-Ref. 358.

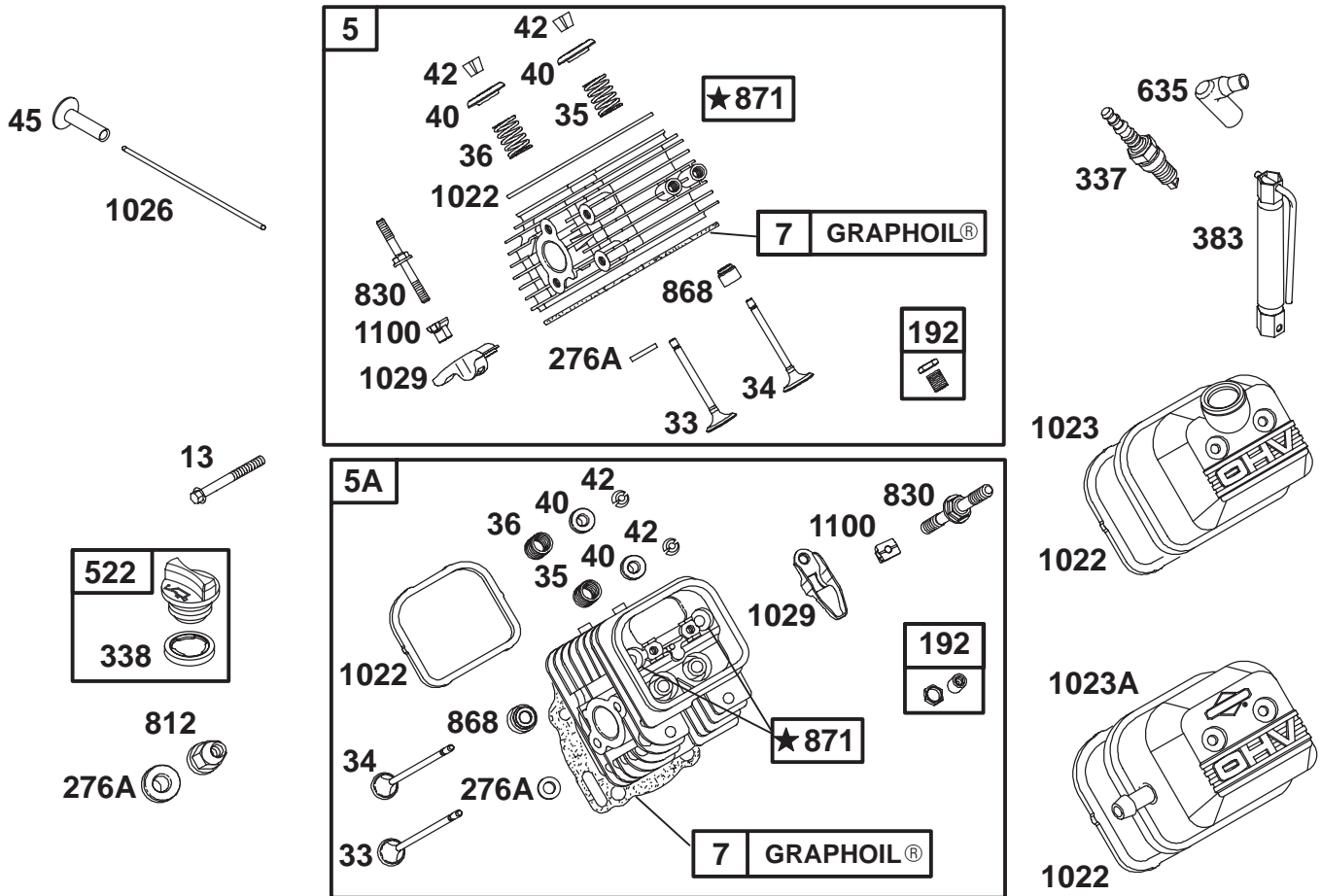


Assemblies include all parts shown in frames.

## Crankcase Assembly

Ref. No.	Part No.	Qty.	Description	Ref. No.	Part No.	Qty.	Description
★12	691684	1	Gasket-Crankcase				
18	808847	1	Cover-Crankcase				
★20	805049	1	Seal-Oil (PTO Side)				
22	692540	1	Screw (Crankcase Cover)				
276	690704	1	Washer-Sealing				
★439	692154	1	Seal-O Ring (Crankcase Cover)				
552	690701	1	Bushing-Governor Crank				
552A	806686	1	Bushing-Governor Crank				
615	691550	1	Retainer-Governor Shaft				
616	806685	1	Crank-Governor				
★691	690680	1	Seal-Governor Shaft				

★ Included in Engine Gasket Set-Ref. 358.



Assemblies include all parts shown in frames.

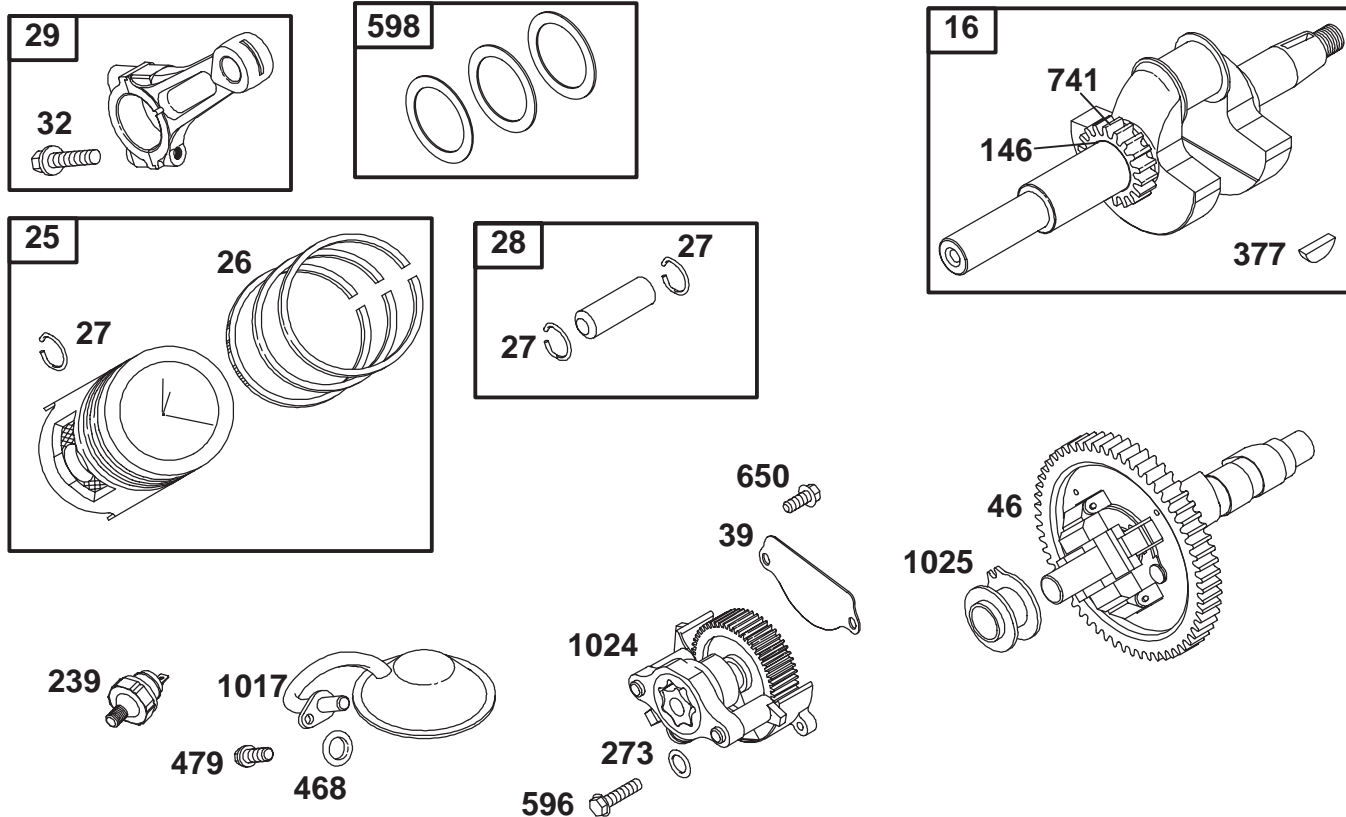
## Cylinder Head and Cover Assembly

Ref. No.	Part No.	Qty.	Description
5	808381	1	Head-Cylinder (Cylinder 1)
5A	808382	1	Head-Cylinder (Cylinder 2)
★7	806085	1	Gasket-Cylinder Head
13	692059	1	Screw (Cylinder Head)
33	807681	1	Valve-Exhaust
34	807680	1	Valve-Intake
35	692084	1	Spring-Valve (Intake)
36	692084	1	Spring-Valve (Exhaust)
40	692058	1	Retainer-Valve
42	807683	1	Keeper-Valve
45	690977	1	Tappet-Valve
192	807623	1	Adjuster-Rocker Arm
★△276A	691766	1	Washer-Sealing
337	491055	1	Sparkplug
★△338	691312	1	Gasket-Dipstick
383	19374	1	Wrench-Sparkplug
522	491832	1	Plug-Dipstick/Fill
635	692076	1	Boot-Sparkplug
812	692055	1	Nut

Ref. No.	Part No.	Qty.	Description
830	691544	1	(Rocker Cover) Stud
★△868	691963	1	(Rocker Arm) Seal-Valve
871	692057	1	Bushing-Valve Guide
★△1022	806039	1	Gasket-Rocker Cover
1023	690758	1	Cover-Valve
1023A	691558	1	Cover-Valve
1026	691836	1	Rod-Push (Intake Valve)
	691758	1	Rod-Push (Exhaust Valve)
1029	691543	1	Arm-Rocker
1100	690973	1	Pivot-Rocker Arm

△ Included in Valve Gasket Set-Ref. 1095.

★ Included in Engine Gasket Set-Ref. 358.



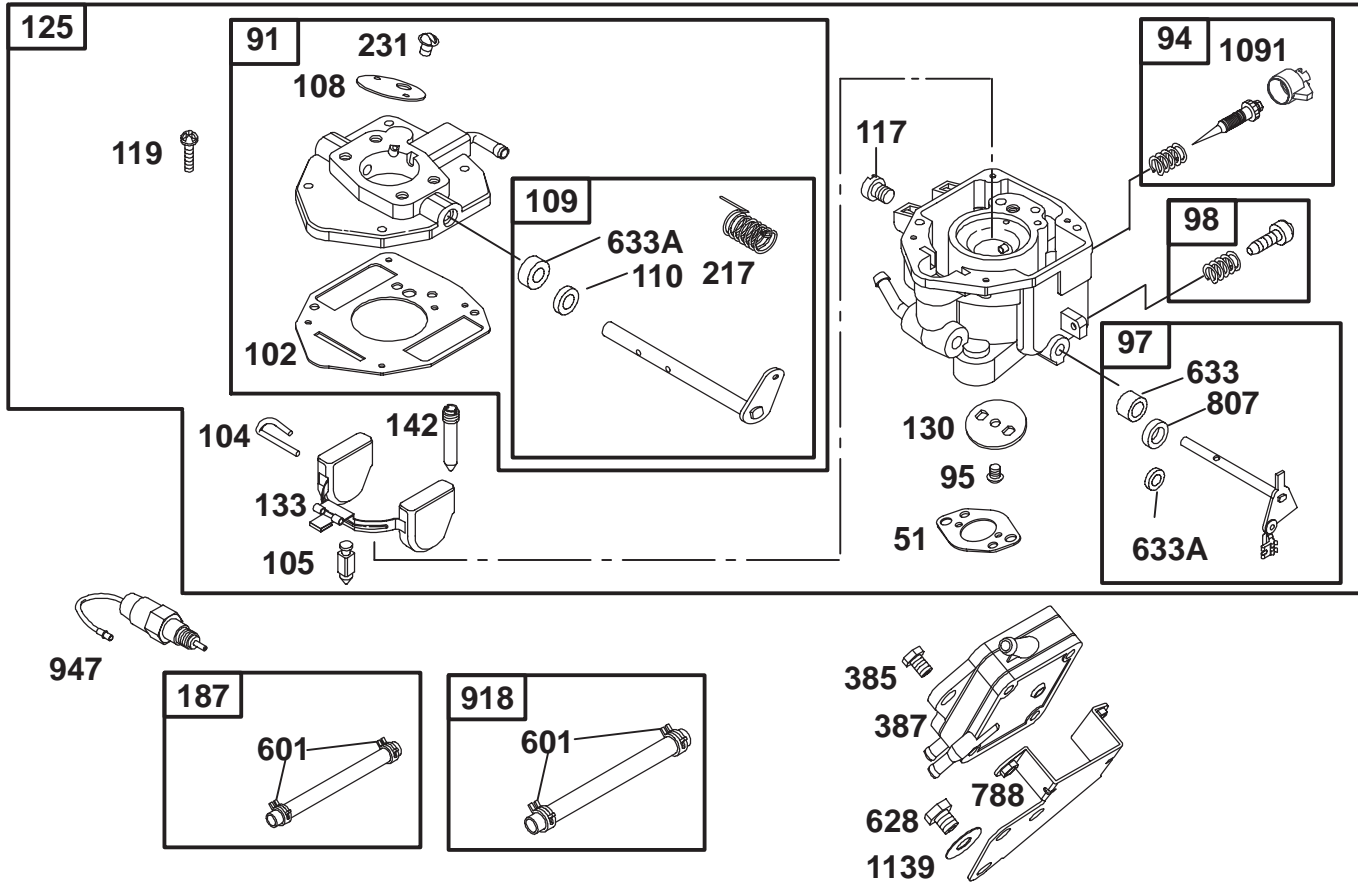
Assemblies include all parts shown in frames.

## Crankshaft, Piston and Oil Pump Assembly

Ref. No.	Part No.	Qty.	Description
16	692163	1	Crankshaft
25	807619	1	Piston Assembly (Standard)
	807807	1	Piston Assembly (.010 Oversize)
	807809	1	Piston Assembly (.020 Oversize)
	807811	1	Piston Assembly (.030 Oversize)
26	807620	1	Ring Set (Standard)
	807808	1	Ring Set (.010 Oversize)
	807810	1	Ring Set (.020 Oversize)
	807812	1	Ring Set (.030 Oversize)
27	690683	1	Lock-Piston Pin
28	807621	1	Pin-Piston
29	807900	1	Rod-Connecting (Standard)
	807809	1	Rod-Connecting (.020 Undersize)
32	690698	1	Screw

Ref. No.	Part No.	Qty.	Description
			(Connecting Rod)
39	690745	1	Deflector-Oil
46	691557	1	Camshaft
146	691639	1	Key-Timing
239	690233	1	Switch-Oil Pressure
★273	690681	1	Seal-O Ring (Oil Pump)
377	808095	1	Key-Woodruff
★468	690690	1	Seal-O Ring (Oil Pump Screen)
479	692537	1	Screw (Oil Pump Screen)
596	691492	1	Screw (Oil Pump)
598	807625	1	Shim-End Play
650	692539	1	Screw (Oil Deflector)
741	691530	1	Gear-Timing
1017	690900	1	Screen-Oil Pump
1024	693185	1	Pump-Oil
1025	690689	1	Slider-Governor

★ Included in Engine Gasket Set-Ref. 358.



Assemblies include all parts shown in frames.

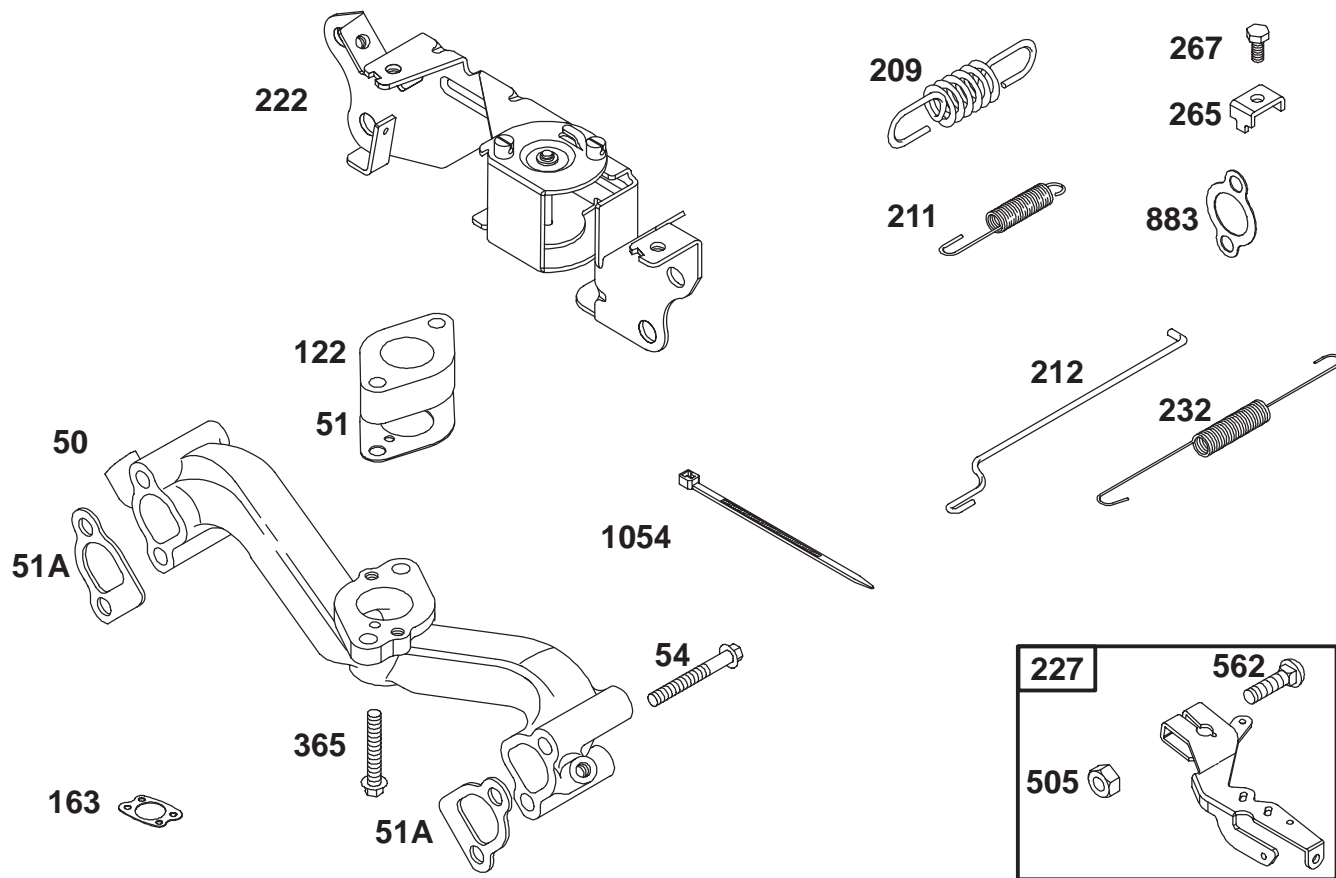
## Carburetor and Fuel Pump Assembly

Ref. No.	Part No.	Qty.	Description
★●51	691694	1	Gasket-Intake
91	808964	1	Body-Upper Carburetor
●94	808257	1	Kit-Idle Mixture (Throttle Valve)
95	690718	1	Screw
97	809007	1	Shaft-Throttle
98	808177	1	Kit-Idle Speed
●102	692077	1	Gasket-Carburetor Body
●104	690723	1	Pin-Float Hinge
●105	692078	1	Valve-Float Needle
108	690719	1	Valve-Choke
109	809062	1	Shaft-Choke
110	806861	1	Washer (Choke Shaft)
117	806986	1	Jet-Main
119	690720	1	Screw (Upper to Lower Body)
125	809092	1	Carburetor
130	690726	1	Valve-Throttle
133	806961	1	Float-Carburetor
142	806987	1	Nozzle-Carburetor
187	691050	1	Line-Fuel
217	806862	1	Spring-Choke Return

Ref. No.	Part No.	Qty.	Description
231	690718	1	Screw (Choke Valve)
385	693169	1	Screw (Fuel Pump)
387	808656	1	Pump-Fuel
601	691038	1	Clamp-Hose
628	806660	1	Screw (Fuel Pump Bracket)
●633	806131	1	Seal-Choke/Throttle Shaft
●633A	690722	1	Seal-Choke/Throttle Shaft
788	691559	1	Bracket-Fuel Pump
●807	805557	1	Spacer-Throttle
918	393815	1	Hose-Vacuum (Cut to Required Length)
947	692094	1	Solenoid-Fuel
●1091	691516	1	Cap-Limiter
1139	806497	1	Washer (Fuel Pump Bracket)

● Included in Carburetor Overhaul Kit-Ref. 121.

★ Included in Engine Gasket Set-Ref. 358.



Assemblies include all parts shown in frames.

## Manifold Intake and Governor Control Assembly

Ref. No.	Part No.	Qty.	Description
50	690754	1	Manifold-Intake
★●51	691694	1	Gasket-Intake
★△51A	692035	1	Gasket-Intake
54	690676	1	Screw (Intake Manifold)
122	690691	1	Spacer-Carburetor
★163	692081	1	Gasket-Air Cleaner
209	691507	1	Spring-Governor
211	691553	1	Spring-Governed Idle
212	690712	1	Link-Governor
222	691570	1	Bracket-Control
227	690236	1	Lever-Governor Control
232	692073	1	Spring-Governor Link
265	691024	1	Clamp-Casing
267	692083	1	Screw (Casing Clamp)
505	690238	1	Nut (Governor Control Lever)
562	690239	1	Bolt (Governor Control Lever)
★△883	691613	1	Gasket-Exhaust

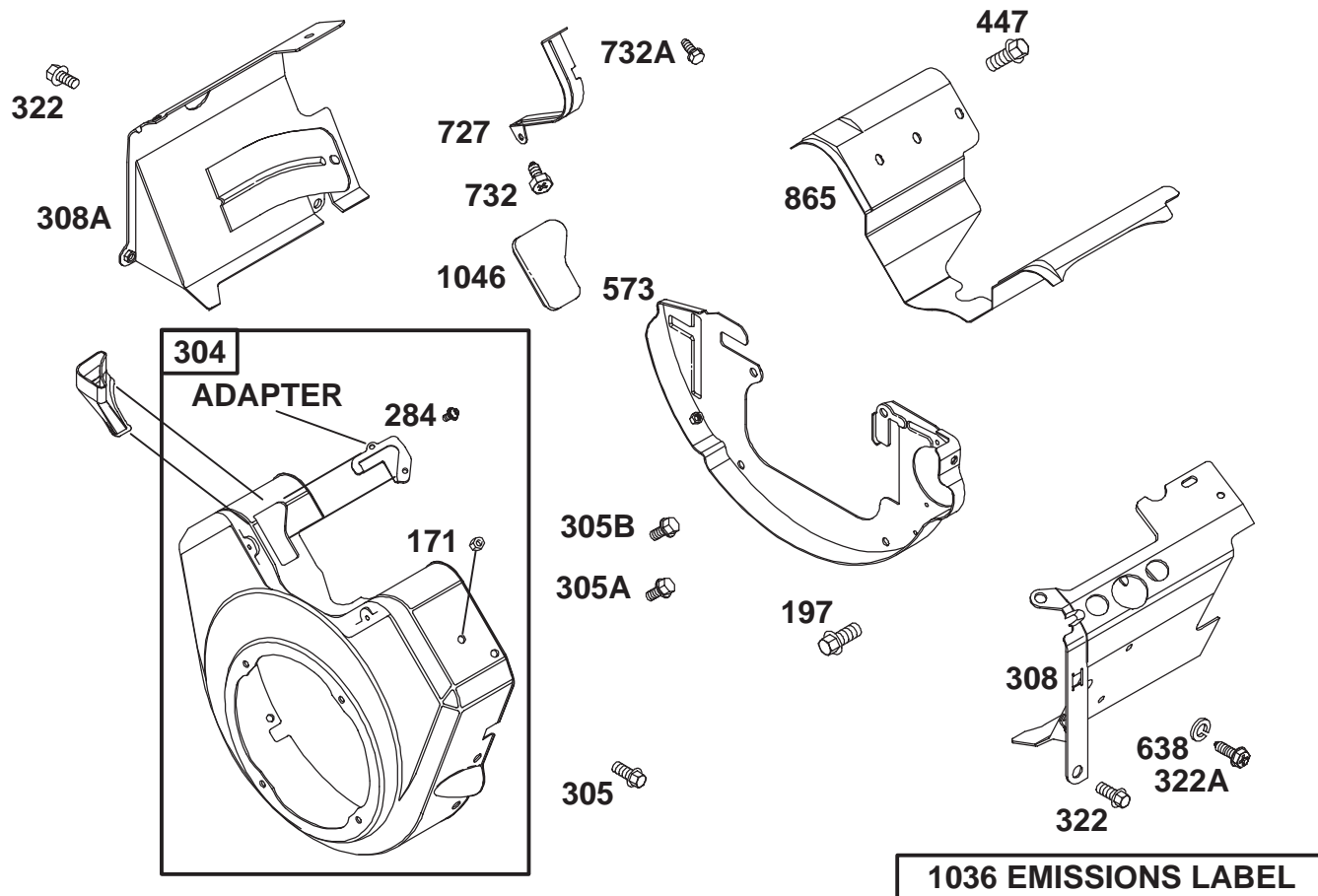
Ref. No.	Part No.	Qty.	Description
1054	280275	1	Cable-Tie

△ Included in Valve Gasket Set-Ref. 1095.

● Included in Carburetor Overhaul Kit-Ref. 121.

★ Included in Engine Gasket Set-Ref. 358.



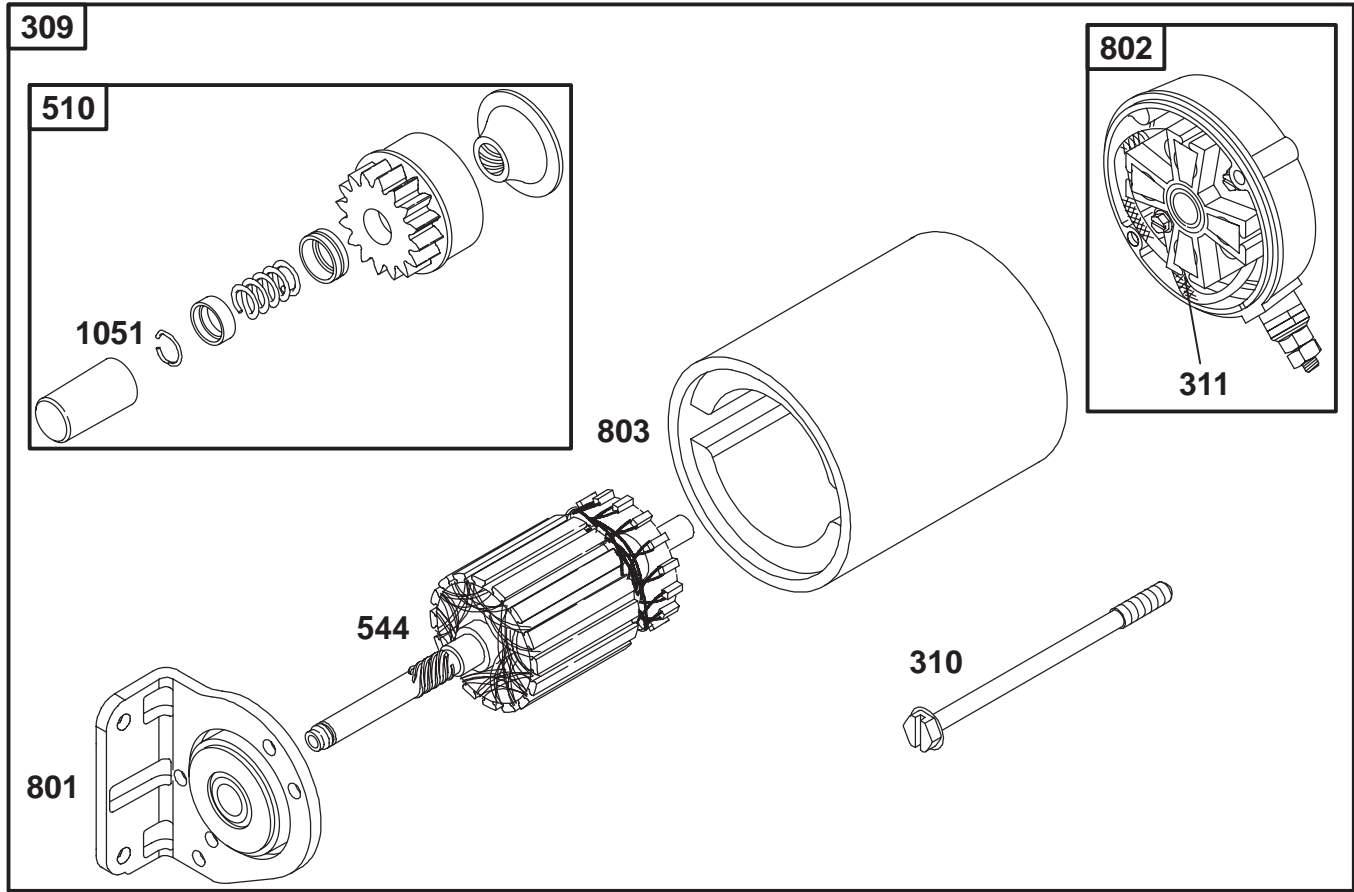


Assemblies include all parts shown in frames.

## Blower Housing and Cover Assembly

Ref. No.	Part No.	Qty.	Description
197	692539	1	Screw (Backplate)
304	808408	1	Housing-Blower
305	692539	1	Screw (Blower Housing)
305A	692056	1	Screw (Blower Housing)
305B	692062	1	Screw (Blower Housing)
308	806547	1	Cover-Cylinder Head (Cylinder 1)
308A	806546	1	Cover-Cylinder Head (Cylinder 2)
322	692539	1	Screw (Cylinder Head Cover)
322A	692067	1	Screw (Cylinder Head Cover)
447	692539	1	Screw (Air Guide Cover)
573	690902	1	Plate-Back
638	691551	1	Washer (Cylinder Head Cover)
727	690714	1	Cover-Starter Drive
732	690688	1	Screw

Ref. No.	Part No.	Qty.	Description
732A	692539	1	(Starter Drive Cover) Screw
865	690750	1	Cover-Air Guide
1036	806881	1	Label-Emission
1046	692082	1	Plug-Blower Housing

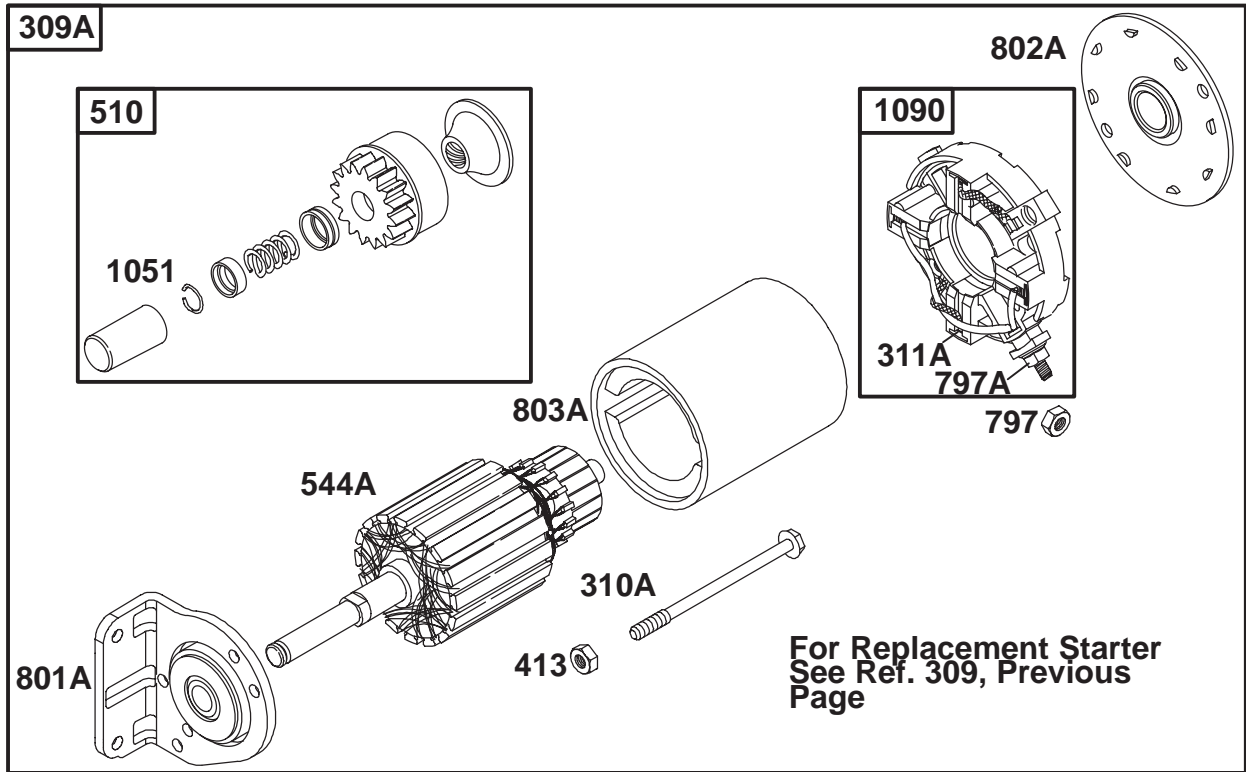


Assemblies include all parts shown in frames.

### Starter Motor Assembly

Ref. No.	Part No.	Qty.	Description
309	691564	1	Motor-Starter
310	496880	1	Bolt (Starter Motor)
311	496887	1	Brush Set
510	496881	1	Drive-Starter
544	690855	1	Armature-Starter
697	692062	1	Screw (Drive Cap)
801	808777	1	Cap-Drive
802	496813	1	Cap-End
803	690854	1	Housing-Starter
1051	691124	1	Ring-Retaining

Ref. No.	Part No.	Qty.	Description

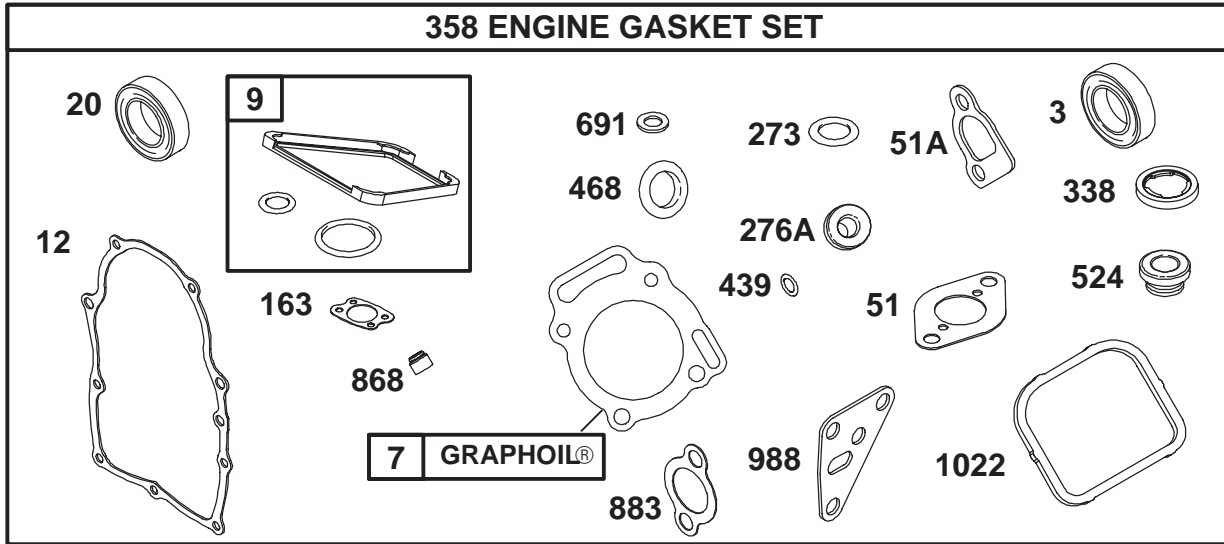


Assemblies include all parts shown in frames.

## Replacement Starter Motor Assembly

Ref. No.	Part No.	Qty.	Description
309A		1	Motor-Starter (For Replacement Starter, See Ref. 309, Previous Page)
310A	690323	1	Bolt (Starter Motor)
311A	497608	1	Brush Set
413	693587	1	Nut (Starter Motor)
510	496881	1	Drive-Starter
544A	693548	1	Armature-Starter
697	692062	1	Screw (Drive Cap)
797	691029	1	Nut (Brush Retainer)
797A	693167	1	Nut (Brush Retainer)
801A	808778	1	Cap-Drive
802A	691286	1	Cap-End
803A	693547	1	Housing-Starter
1051	691124	1	Ring-Retaining
1090	691293	1	Retainer-Brush

Ref. No.	Part No.	Qty.	Description



Assemblies include all parts shown in frames.

### Engine Gasket Set

Ref. No.	Part No.	Qty.	Description
★3	805101	1	Seal-Oil (Magneto Side)
★Δ7	806085	1	Gasket-Cylinder Head
★9	807893	1	Gasket-Breather
★12	691684	1	Gasket-Crankcase
★20	805049	1	Seal-Oil (PTO Side)
★●51	691694	1	Gasket-Intake
★Δ51A	692035	1	Gasket-Intake
★163	692081	1	Gasket-Air Cleaner
★273	690681	1	Seal-O Ring (Oil Pump)
★Δ276A	691766	1	Washer-Sealing
★Δ338	691312	1	Gasket-Dipstick
358	808390	1	Gasket Set-Engine
439	692154	1	Seal-O Ring (Crankcase Cover)
★468	690690	1	Seal-O Ring (Oil Pump Screen)
★524	693172	1	Seal-Dipstick Tube
★691	690680	1	Seal-Governor Shaft
★Δ868	691963	1	Seal-Valve
★Δ883	691613	1	Gasket-Exhaust
★988	692063	1	Gasket-Oil Filter

Ref. No.	Part No.	Qty.	Description
★Δ1022	806039	1	Adapter Gasket-Rocker Cover

Δ Included in Valve Gasket Set-Ref. 1095. ● Included in Carburetor Overhaul Kit-Ref. 121.

★ Included in Engine Gasket Set-Ref. 358.



