



Form No. 3444-745 Rev B

Count on it.

Parts Catalog

EU Light Kit

**Groundsmaster® 5900 Series Rotary Mower
with Cab**

Model No. 31695



Ordering Replacement Parts

To order replacement parts, please supply the part number, the quantity, and the description of each part desired.

Understanding Reference Numbers

Each identified part in an illustration has a reference number. The reference number for a part also appears in the parts list, along with other information about the part.

This catalog uses two special reference number formats, one to indicate parts in a service assembly and another to indicate the quantity of a given part in an illustration.

Service Assembly Reference Numbers

Parts in service assemblies have reference numbers in the form a:b. The a represents the reference number of the entire service assembly and the b represents a sequential number unique to each part within the service assembly.

For example, a wheel assembly might be identified by reference number 6, the tire by 6:1, the valve by 6:2, and the wheel by 6:3. When you order the assembly identified by reference number 6, you receive all parts identified by reference numbers 6:1, 6:2, and 6:3. However, you may also order any part individually. Reference numbers of this type appear in illustration and in parts lists.

Reference Numbers Indicating Quantity

In an illustration, if a reference number indicates more than one part, the reference number has the form nX y. The n represents the quantity of the part, the X is the multiplication symbol, and the y represents the reference number.

For example, in an illustration, the reference number 2X 37 means that two of the parts identified by reference number 37 are indicated.

Contents

Headlight Assembly for Machines with a Cab only 4

Light Mount Kit Assembly No. 140-6698 5

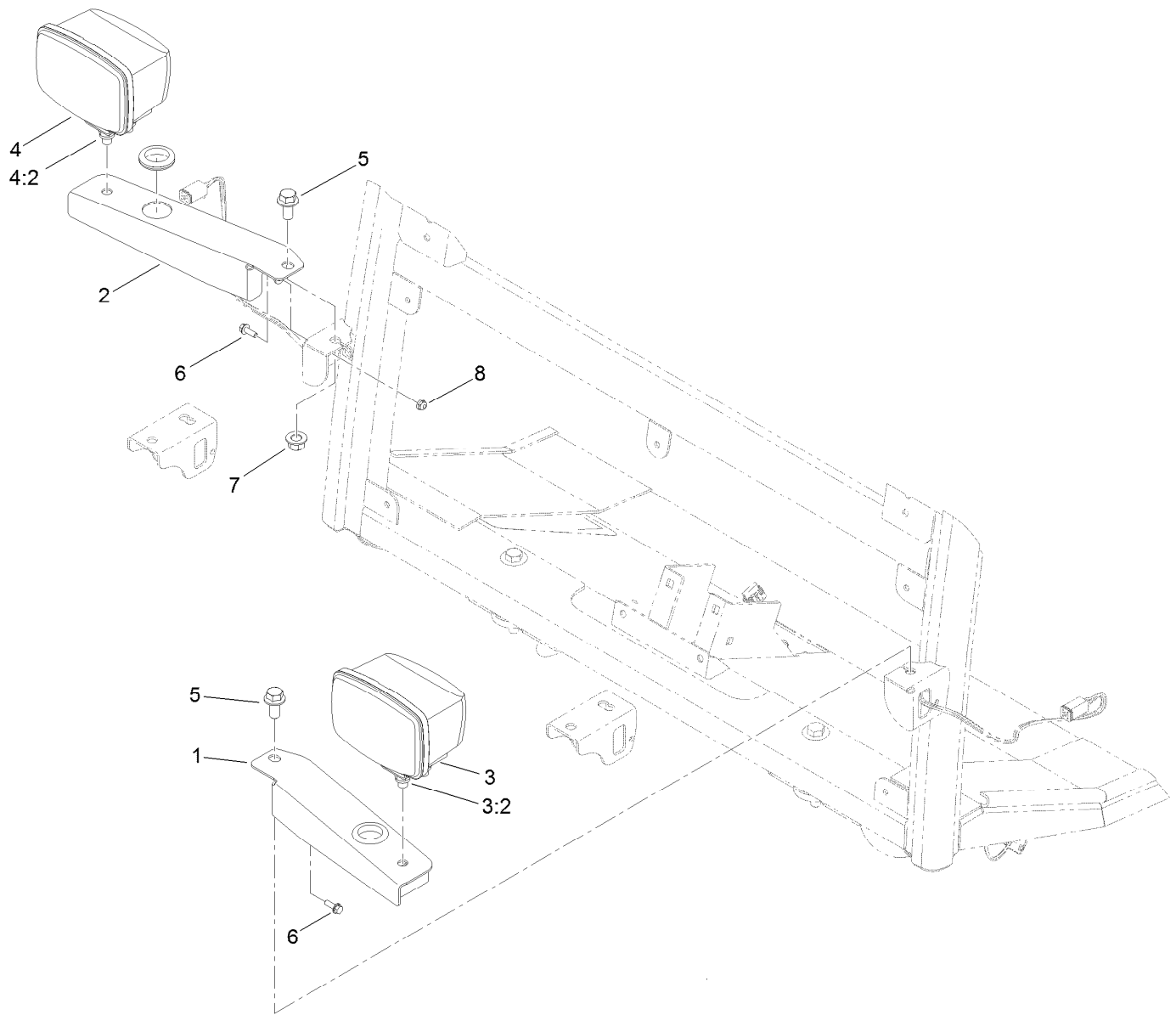
Headlight Assembly for Machines with ROPS only 6

Tail Light Assembly 7

Pivot Bracket Assembly No. 140-6882 8

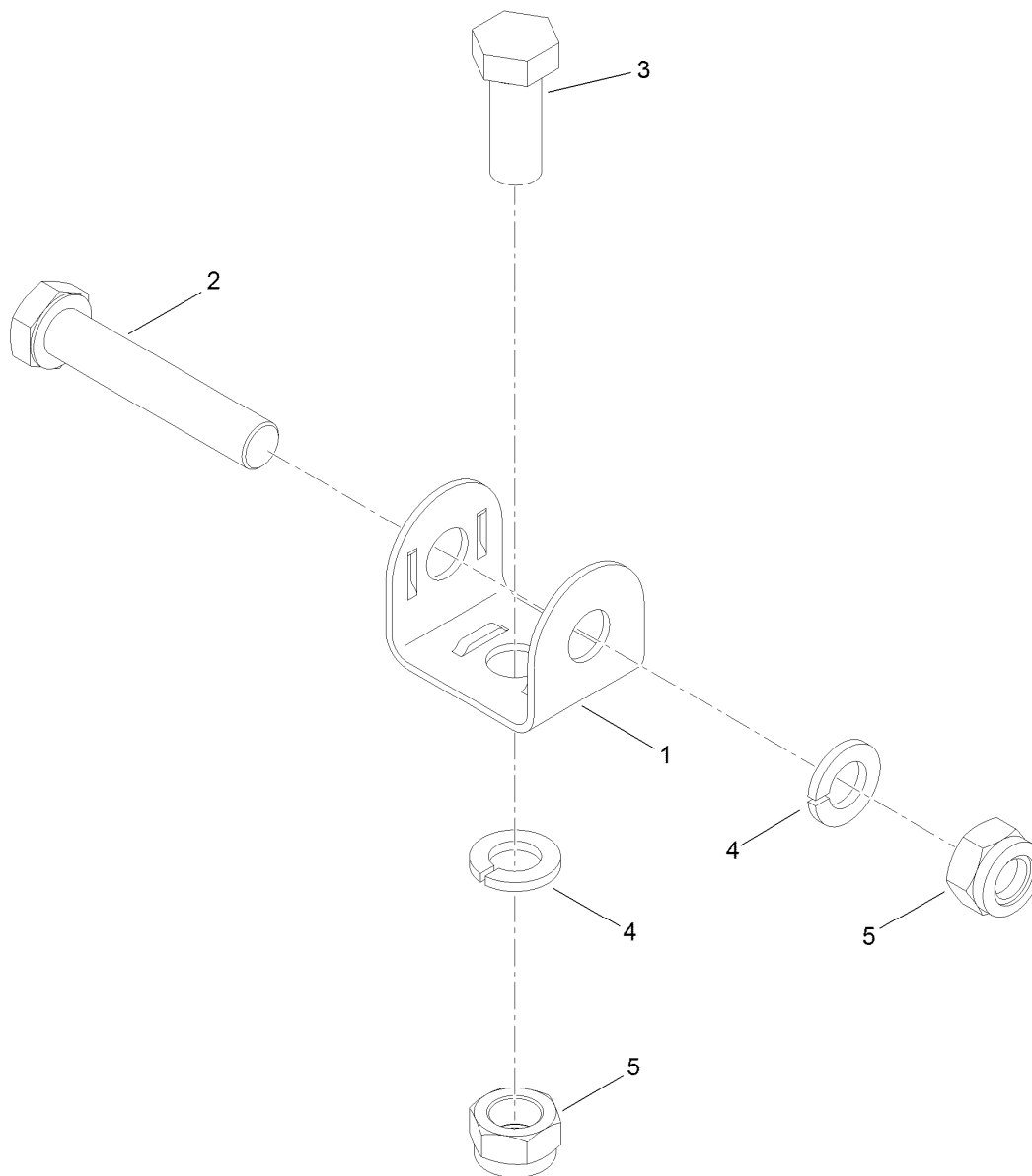
Light, Mounting Plates and Decal Assembly 9

Electrical Parts Assembly 10



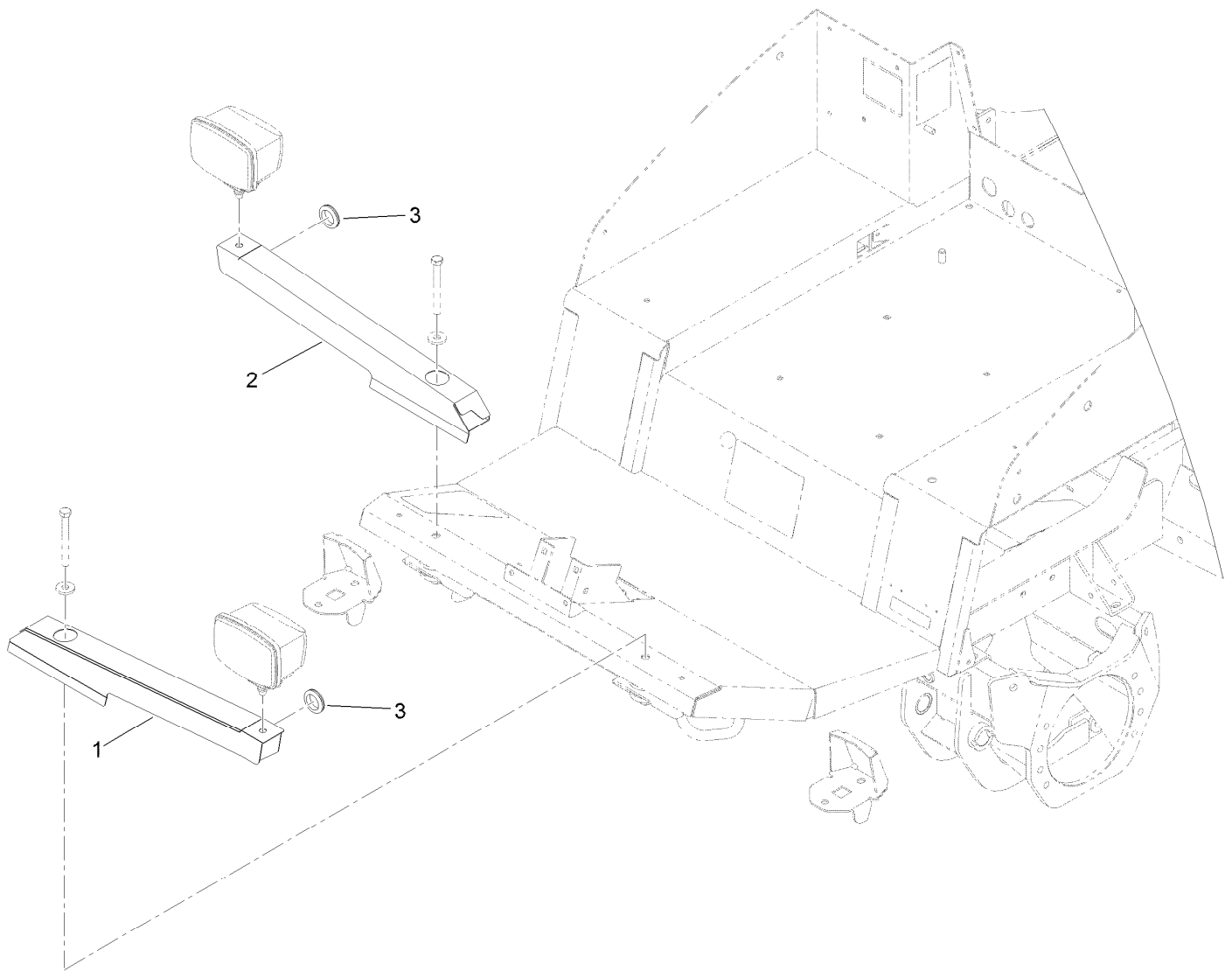
Headlight Assembly for Machines with a Cab only

Ref.	Part Number	Qty.	Description
1	144-3298-03	1	Mount-Light, LH
2	144-3295-03	1	Mount-Light, RH
3	140-6773	1	LH Light ASM
3:2	140-6698	1	Light Mount Kit
4	140-6772	1	RH Light ASM
4:2	140-6698	1	Light Mount Kit
5	3234-6	2	Screw-HHF
6	115-5103	2	Screw-HHF
7	99-5107	2	Nut-Lock
8	104-7201	2	Nut-HF, NI



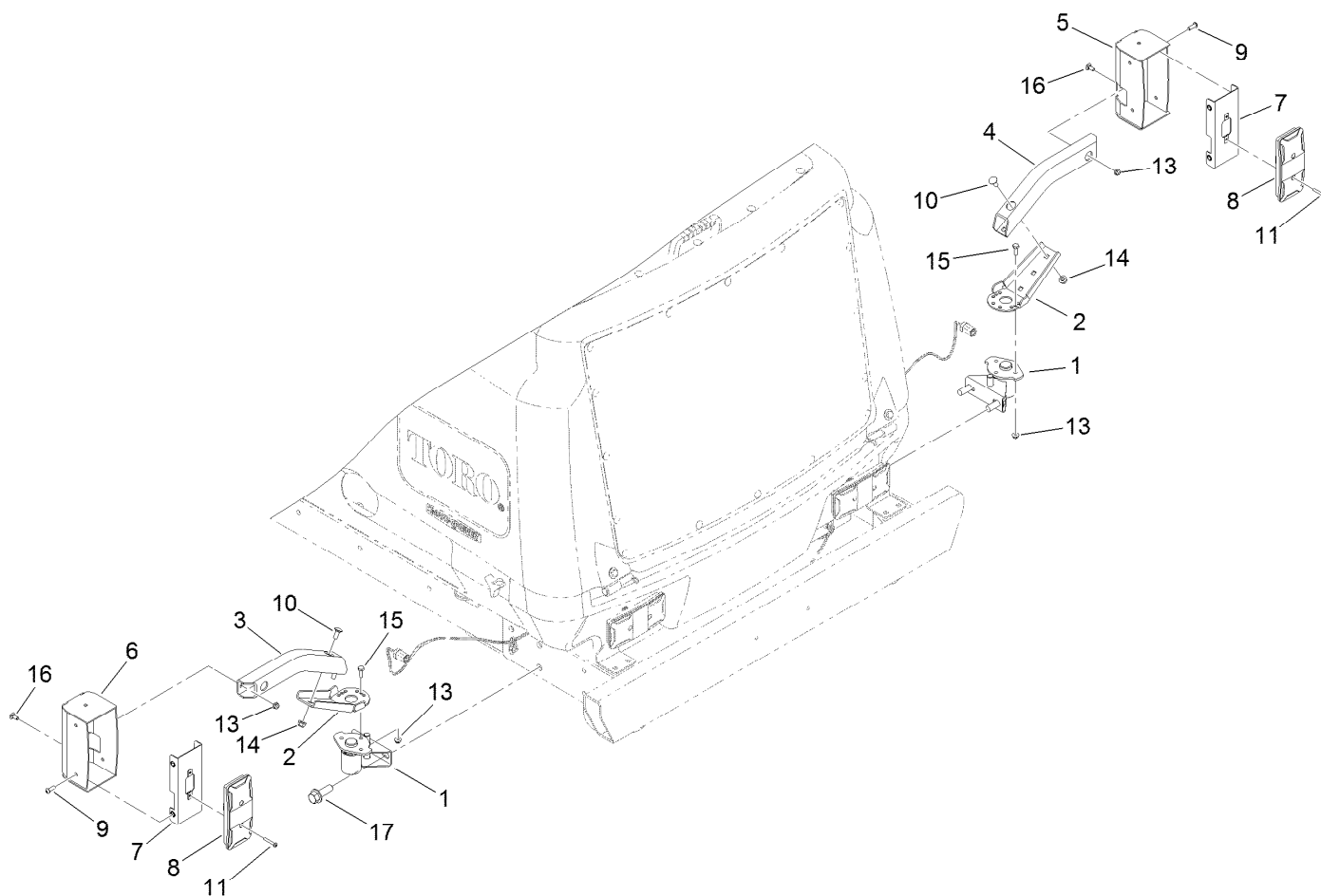
Light Mount Kit Assembly No. 140-6698

<i>Ref.</i>	<i>Part Number</i>	<i>Qty.</i>	<i>Description</i>
1	139-2092	1	Mount-Light
2	107-7983	1	Screw-HH
3	33116-030	1	Screw-HH
4	48-8070	2	Washer-Lock
5	33026-00	2	Nut-Hex



Headlight Assembly for Machines with ROPS only

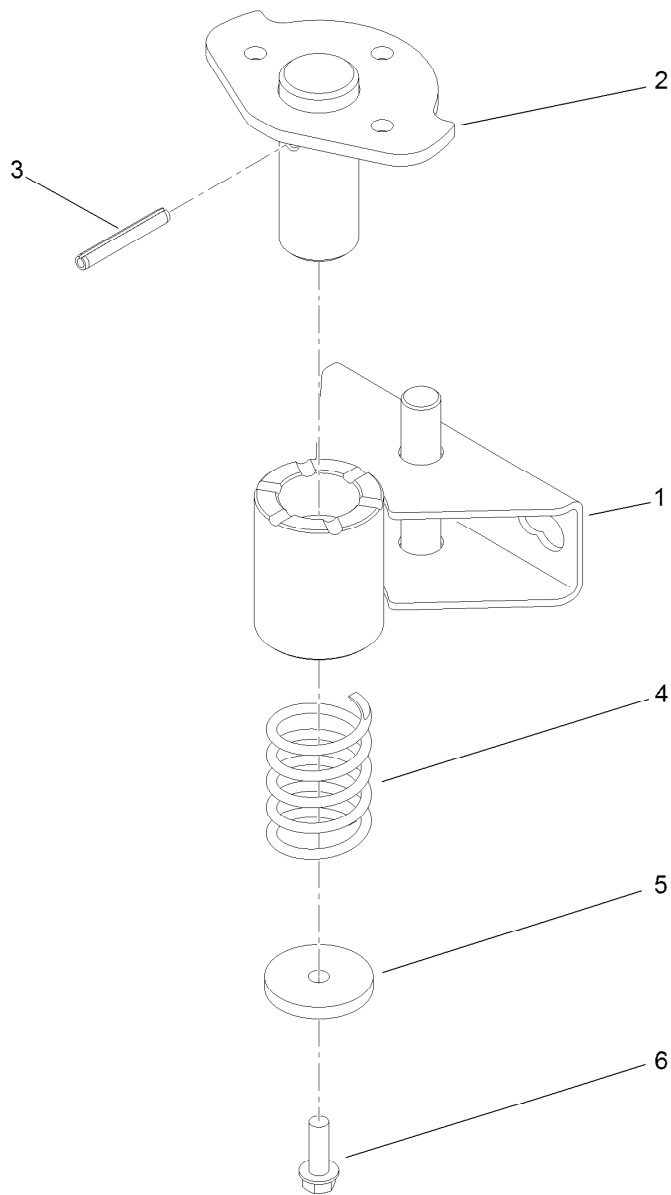
<i>Ref.</i>	<i>Part Number</i>	<i>Qty.</i>	<i>Description</i>
1	140-6926-03	1	Light-Bracket, LH
2	140-6915-03	1	Light-Bracket, RH
3	240-3	2	Grommet-Rubber



Tail Light Assembly

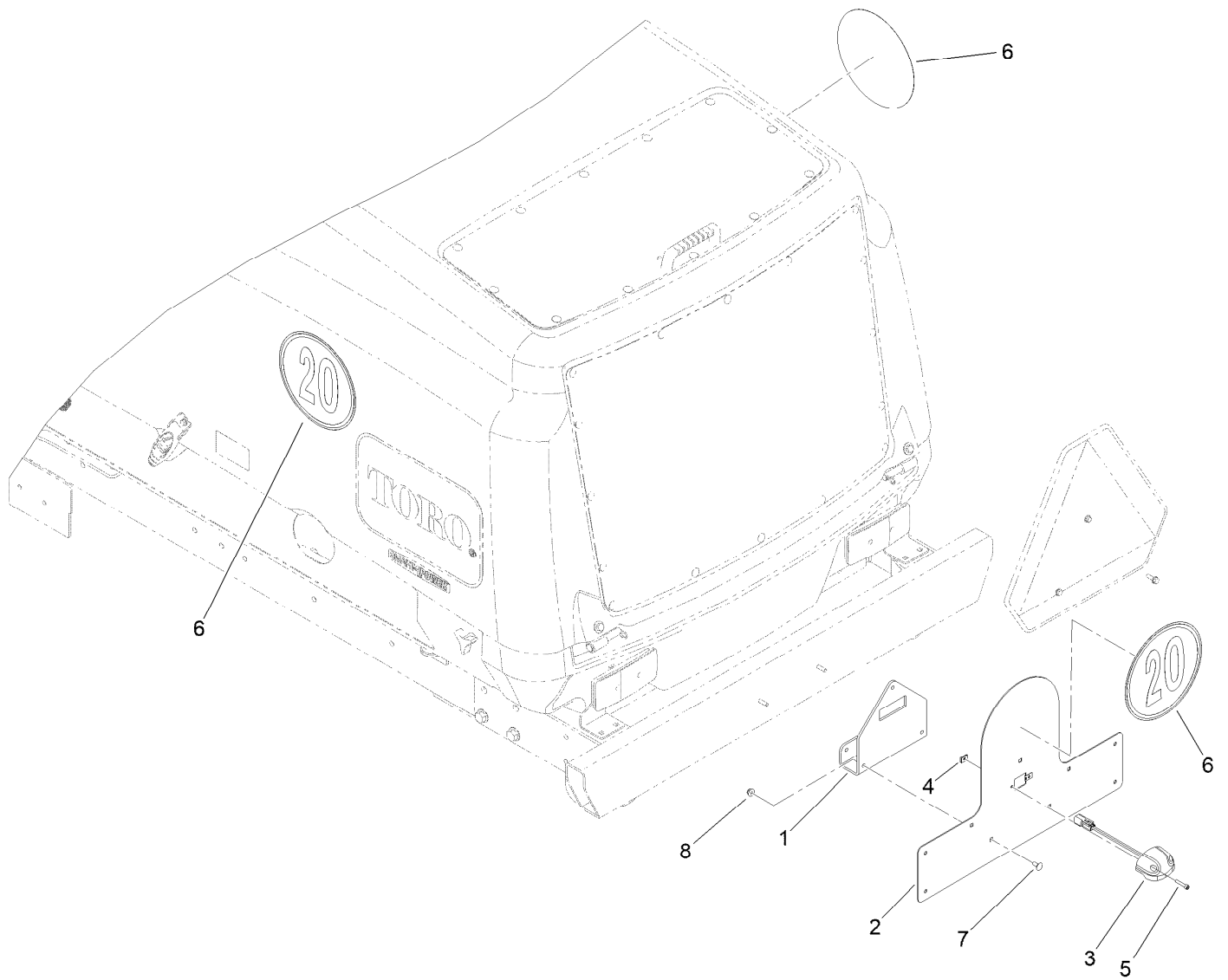
Ref.	Part Number	Qty.	Description
1	140-6882	2	Pivot Bracket ASM
2	144-3251-03	2	Mount-Light
3	140-6705-03	1	Tube-Mount, LH
4	140-6706-03	1	Tube-Mount, RH
5	140-6829-03	1	Housing-Light, RH
6	140-6828-03	1	Housing-Light, LH
7	140-6835	2	Inner Mount ASM
8	139-2071	2	Light-Rear Tail/Stop/Turn

Ref.	Part Number	Qty.	Description
9	3274-69	8	Screw-HSBH
10	3230-23	4	Bolt-CARR
11	3250-23	4	Screw-PPH
13	104-7201	10	Nut-HF, NI
14	104-8300	4	Nut-HF, NI
15	321-4	6	Screw-HH
16	3229-11	4	Screw-CARR
17	100-6116	4	Screw-HHF



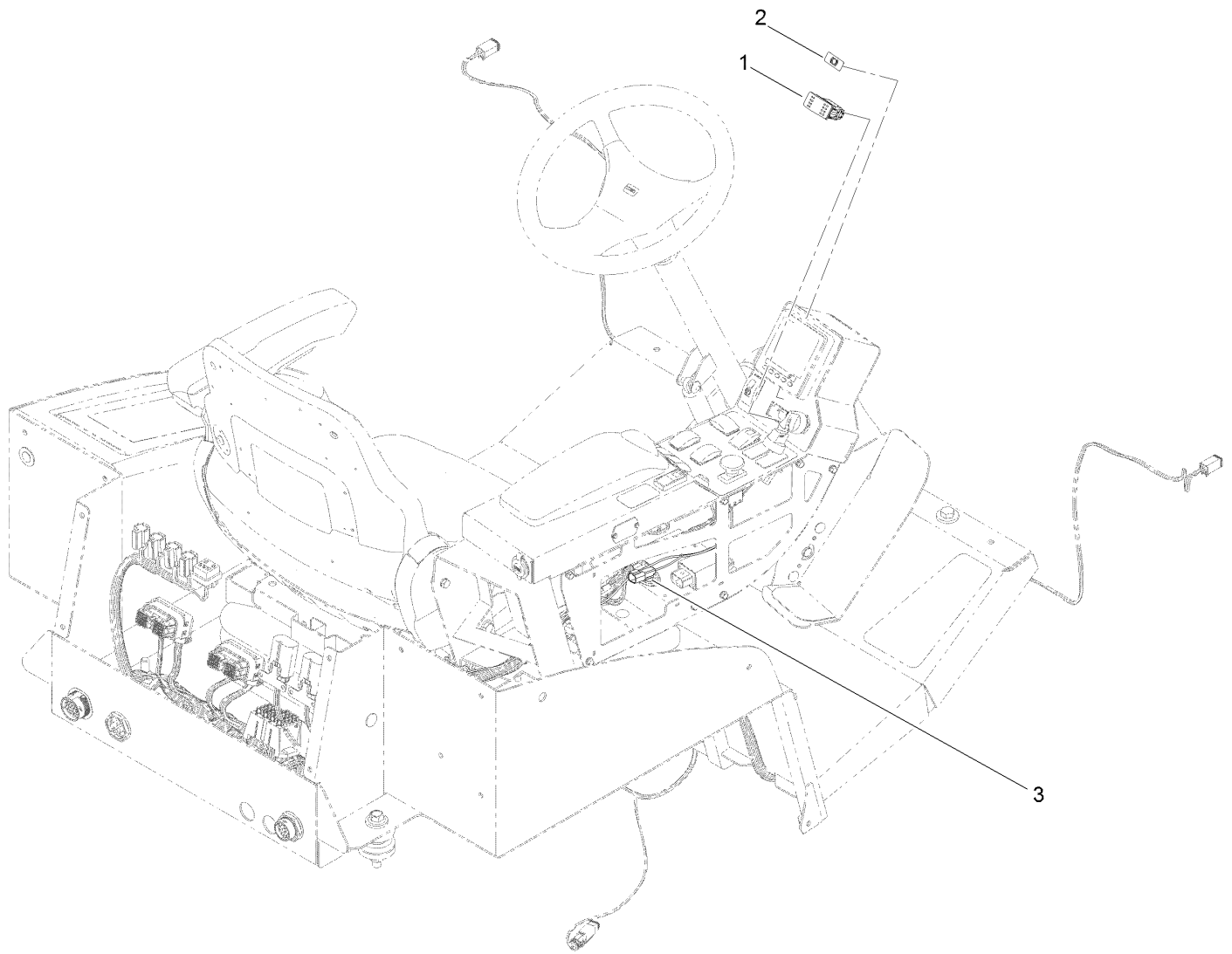
Pivot Bracket Assembly No. 140-6882

<i>Ref.</i>	<i>Part Number</i>	<i>Qty.</i>	<i>Description</i>
1	140-6923-03	1	Bracket-Pivot
2	140-6682-03	1	Pivot
3	32121-34	1	Pin-Roll
4	61-3270-03	1	Spring-Compression
5	119-9875	1	Washer
6	32105-15	1	Screw-HWH



Light, Mounting Plates and Decal Assembly

Ref.	Part Number	Qty.	Description
1	140-6842-03	1	Mount-Smv
2	140-6841-03	1	Mount-License, Speed
3	139-2074	1	Light-Plate, License (Ece)
4	107-1013	2	Nut-Speed
5	3274-81	2	Screw-HSH
6	140-1519	3	Decal-Speed (20Kpm)
7	3229-11	3	Screw-CARR
8	104-7201	3	Nut-HF, NI



Electrical Parts Assembly

<i>Ref.</i>	<i>Part Number</i>	<i>Qty.</i>	<i>Description</i>
1	122-0978	1	Switch
2	136-0007	1	Decal-Brake, Auxiliary
3	122-1070	1	Harness-Wire

Notes:



Count on it.