

Adapter Kit

2000 and Later 52" Mowers to 1999 and Earlier 260 Series Lawn and Garden Tractors

Part No. 105-1518

Installation Instructions

Loose Parts

Note: Use the chart below to identify parts for assembly.

DESCRIPTION	QTY.	USE
Upstop	1	Installing the Upstop

Note: If you have a 1999 or earlier tractor and are installing a 2000 or later 52 in. deck, this kit is needed to install the deck.

Installing the Upstop

Install this upstop while preparing the tractor for the deck (Fig. 1).

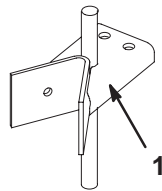


Figure 1

m-4619

1. Correct Upstop

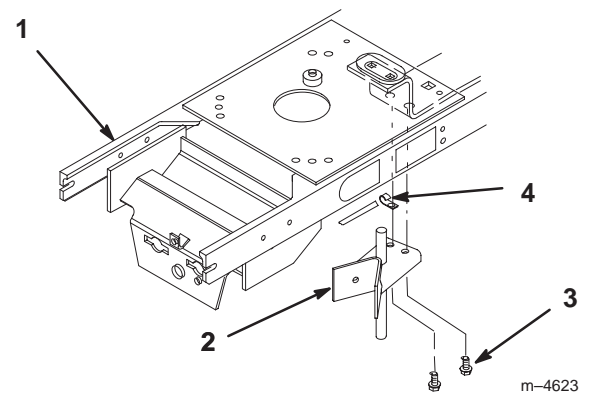


Figure 2

1. Tractor Frame
2. Upstop

3. Bolt
4. J-Clip

m-4623

1. Remove bolts securing existing up-stop to tractor frame (Fig. 2).
2. Place J-clip, holding drain hose, against frame and mount up-stop to frame with previously removed hardware (Fig. 2).