



Electric Winch Kit Twister™ Utility Vehicle

Model No. 19053

Installation Instructions

Installation

Preparing the Vehicle

1. Position the machine on a level surface. Set the parking brake, stop the engine, and remove the key.

Caution

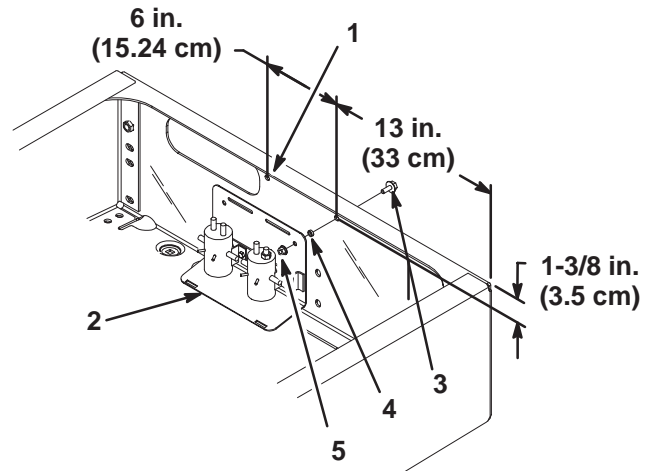
If you leave the key in the ignition switch, someone could accidentally start the engine and seriously injure you or other bystanders.

Remove the key from the ignition switch before you do any maintenance.

2. Remove the hood from the vehicle by removing the 2 screws in the top of the hood, the 2 bolts on each fender, and the 4 bolts from the bottom of the hood.
3. Remove the cargo box by removing the prop rod and one of the brackets on the back of the frame. Lift up on the box and slide it off of the frame.
4. Remove the fuse box cover.
5. Remove the rubber boot from the positive (+) battery cable and disconnect the battery cable from the battery.

Attaching the Solenoid Assembly

1. Locate, mark, and drill 2 holes (0.30 in. [7.6 mm] diameter) in the rear frame as shown in Figure 1.
2. Attach the solenoid assembly to the inside of the rear frame with 2 bolts (1/4 x 3/4 in.), spacers, and flange nuts (1/4 in.) (Fig. 1).



m-5666

Figure 1

- | | |
|------------------------------------|------------------------|
| 1. 0.30 in. (7.6 mm) diameter hole | 3. Bolt, 1/4 x 3/4 in. |
| 2. Solenoid assembly | 4. Spacer |
| | 5. Flange nut, 1/4 in. |

Routing the Wire Harness

1. Remove the 2 small bolts securing the panels to the front of the operator's compartment (Fig. 2).
2. Using a screw driver or similar tool, pry apart the overlap in the harness opening in the vehicle compartment to allow greater access.

Note: Make sure that the vehicle is in a temperature above 68 degrees so that the opening is not stiff when prying.

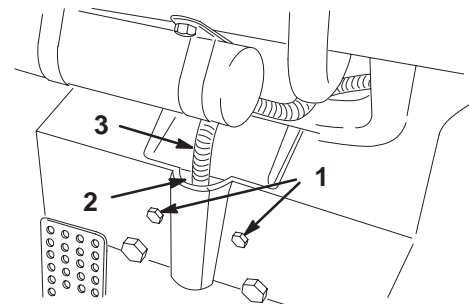


Figure 2

- | | |
|--------------------|---------------------|
| 1. Mounting bolts | 3. Existing harness |
| 2. Harness opening | |

- Carefully tape the 3 loose control plug terminals and wire to the harness to ease harness routing. Tape the terminals to the end of the harness, away from the solenoid assembly.
- Route the harness through the hole in the front of the rear frame.
- Using a wire, hook the front plug of the harness and carefully pull it through the tube to the front of the vehicle (above the tow bar).

Note: To ease in routing the harness, have one person feeding the harness into the tube while another person is pulling. Use caution not to damage the harness end when pulling.

Installing the Control Plug

- Remove the tape from the terminals and wire. Loop the control plug back into the tube at the front of the vehicle and feed it up through the harness opening below the dash (Fig. 2).
- Using the control plug as a template, locate and mark the holes in the glove box in the approximate location shown in Figure 3. Remove the control plug and drill a 0.95 diameter hole using a 61/64 in. drill bit and (2) 0.201 diameter holes using a #7 drill bit in the side of the glove box as shown in Figure 3.

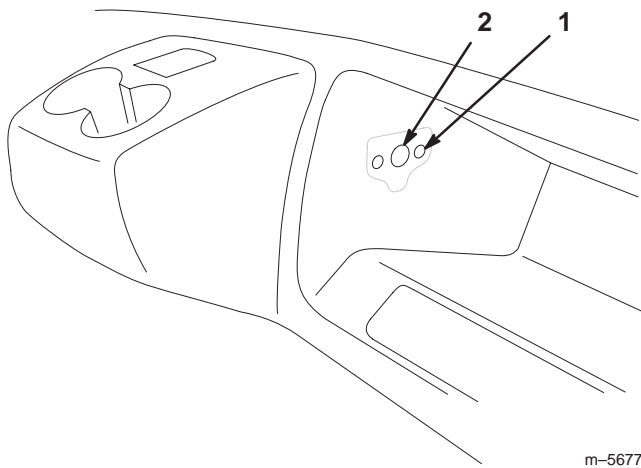


Figure 3

- 0.95 diameter hole
- 0.201 diameter hole

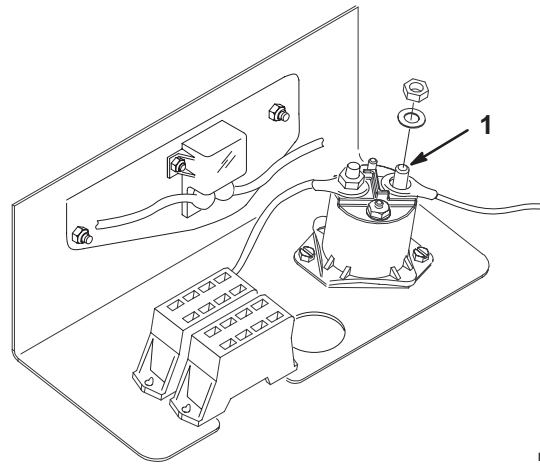
- Attach the control plug to the glove box with the 2 screws.
- Route the 3 control plug terminals below the dash and plug them into the control plug in the glove box.
- Secure the wire harness to the frame and the existing wire harness with 4 wire ties.

Important Keep the harness and plugs away from hot or moving parts.

- Connect the remote control to the control plug.

Connecting the Wire Harness

- Remove the nut securing the positive battery cable to the starter solenoid (Fig. 4).
- Route the other end of the harness toward the fuse panel. Insert the ring end of the terminal of the harness onto the solenoid post and secure it with the nut removed in step 1.



m-5623

Figure 4

- Positive post—solenoid

- Locate and remove the screw securing the engine ground wire to the front right corner of the engine skid plate.
- Secure the engine ground wire and other harness ring end terminal to the engine.
- Secure the wire harness to the rear frame member with a wire tie and the right frame member with 2 wire ties.

Important Keep the harness away from hot or moving parts.

- Insert the upper tabs on the solenoid cover into the top slots of the solenoid assembly; then snap the lower tabs into the slots on the bottom of the assembly.

Attaching the Winch to the Front of the Vehicle

- Attach the roller fairlead to the winch and winch mount with 2 bolts (5/16 x 3 in.), 4 flat washers (5/16 in.), and 2 locknuts (5/16 in.) (Fig. 5).

Note: The rear bolt must be inserted through the bottom of the winch mount and the front bolt must be inserted through the top of the roller fairlead plate (Fig. 5).

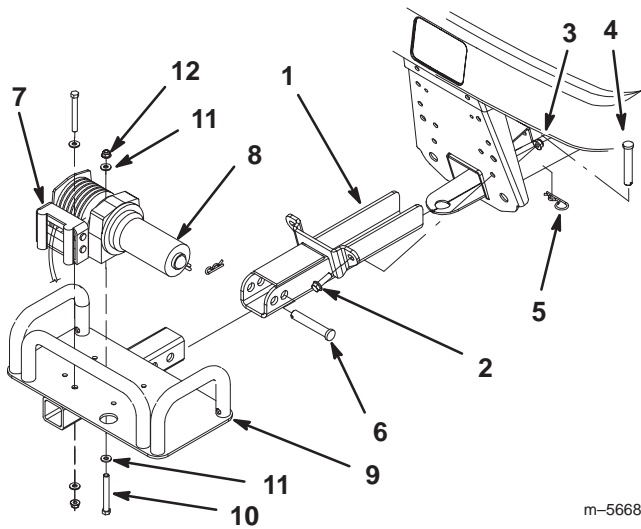


Figure 5

- | | |
|--------------------------------|---------------------------|
| 1. Receiver assembly | 7. Roller fairlead |
| 2. Bolt, 3/8 x 1-1/4 in. | 8. Winch |
| 3. Locknut, 3/8 in. | 9. Winch mount |
| 4. Clevis pin, 1/2 x 3 in. | 10. Bolt, 5/16 x 3 in. |
| 5. Hairpin cotter | 11. Flat washer, 5/16 in. |
| 6. Clevis pin, 5/8 x 3-1/2 in. | 12. Locknut, 5/16 in. |

m-5668

7. Connect the front plug on the wire harness to the winch plug.
8. Install the cargo box, prop rod, and hood.

Connecting the Winch to the Rear of the Vehicle

If you already have a rear receiver hitch, the winch can be attached to the rear of the vehicle.

1. Loop the front end of the wire harness back into the frame tube.
2. Follow steps 5–6 in Attaching the Winch to the Front of the Vehicle, page 2.
3. Connect the rear plug on the wire harness to the winch plug.

Operation

Important Refer to the winch owner's manual included in this kit for operating instructions.

Note: Unplug the remote control from the control plug when not in use.

2. Remove the pin in the roller fairlead and slide the top roller out (Fig. 6).
3. Lay the cable and hook on the lower roller, install the top roller, and secure it with the pin (Fig. 6).

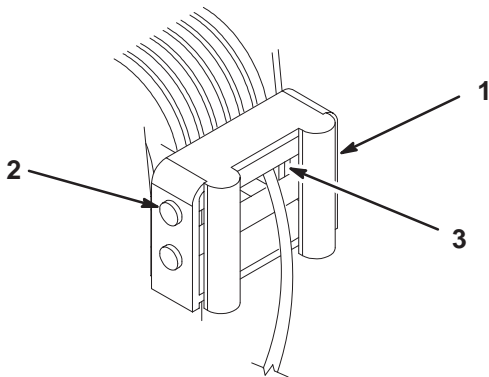


Figure 6

- | | |
|--------------------|---------------|
| 1. Roller fairlead | 3. Top roller |
| 2. Pin | |

m-5678

4. Slide the receiver assembly into the front channel and attach it to the front of the frame with 2 bolts (3/8 x 1-1/4 in.) and 2 locknuts (3/8 in.) (Fig. 5).
5. Secure the receiver to the frame channel with the clevis pin (1/2 x 3 in.) and hairpin cotter (Fig. 5).
6. Slide the winch mount into the receiver and secure it with the clevis pin (5/8 x 3-1/2 in.) and hairpin cotter (Fig. 5).

