



**Mid-Size Mower**  
**ProLine T-Bar Gear 15 HP with 44in Side**  
**Discharge Mower**  
Model No. 30318—230000001 and Up

## Parts Catalog

### Ordering Replacement Parts

To order replacement parts, please supply: the part number, the quantity, and the description of each part desired.

### Understanding Reference Numbers

Each identified part in an illustration has a reference number. The reference number for a part also appears in the parts list, along with other information about the part.

This catalog uses two special reference number formats, one to indicate parts in a service assembly and another to indicate the quantity of a given part in an illustration.

### Service Assembly Reference Numbers

Parts in service assemblies have reference numbers in the form **a:b**. The **a** represents the reference number of the entire service assembly and the **b** represents a sequential number unique to each part within the service assembly.

For example, a wheel assembly might be identified by reference number **6**, the tire by **6:1**, the valve by **6:2**, and the wheel by **6:3**. When you order the assembly identified by reference number **6**, you receive all parts identified by reference numbers **6:1**, **6:2**, and **6:3**. However, you may also order any part individually.

Reference numbers of this type appear in illustrations and in part lists.

### Reference Numbers Indicating Quantity

In an illustration, if a reference number indicates more than one part, the reference number has the form **nX y**. The **n** represents the quantity of the part, the **X** is the multiplication symbol, and the **y** represents the reference number.

For example, in an illustration, the reference number **2X 37** means that two of the parts identified by reference number **37** are indicated.

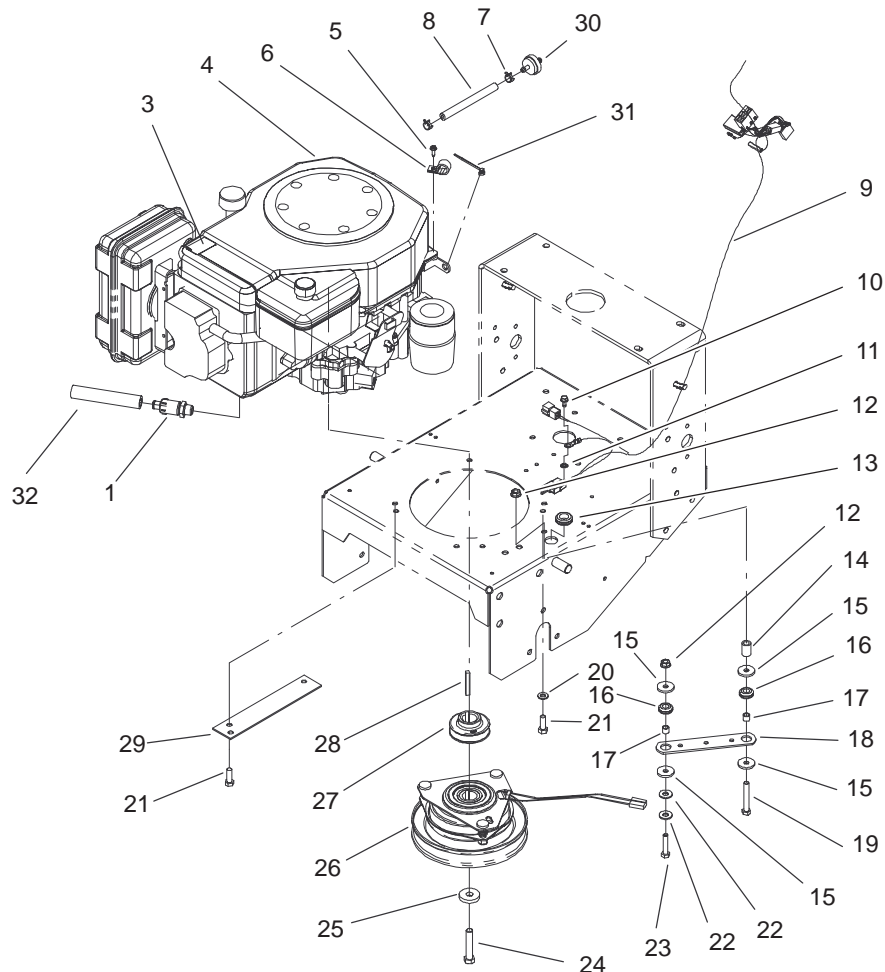
## Contents

<b>Description</b>	<b>Page</b>	<b>Description</b>	<b>Page</b>
Engine Installation Assembly .....	3	Head/Valve/Breather Assembly	
Fuel Tank Assembly .....	4	Kohler CV15T-41604 .....	19
Lower Control Assembly .....	5	Ignition/Electrical Assembly	
Transmission Drive Assembly .....	6	Kohler CV15T-41604 .....	20
Wheel Drive and Brake Assembly .....	7	Blower Housing Assembly	
Upper Handle Assembly .....	8	Kohler CV15T-41604 .....	21
Control Panel Assembly .....	9	Starter Assembly	
Carrier Frame Assembly .....	10	Kohler CV15T-41604 .....	22
Spindle, Pulley and Belt Assembly .....	11	Fuel System Assembly	
Spindle Assembly No. 106-0786 .....	12	Kohler CV15T-41604 .....	23
Spindle Assembly No. 106-0784 .....	13	Engine Control Assembly	
Deck Assembly .....	14	Kohler CV15T-41604 .....	24
Drive Belt and Tensioner Assembly .....	15	Air Intake/Filtration Assembly	
Electrical Schematic .....	16	Kohler CV15T-41604 .....	25
Crankshaft Assembly		Exhaust Assembly	
Kohler CV15T-41604 .....	17	Kohler CV15T-41604 .....	26
Oil Pan/Lubrication Assembly			
Kohler CV15T-41604 .....	18		

## Part Description Abbreviations

Part descriptions in this catalog may include the following abbreviations.

<b>Abbreviation</b>	<b>Meaning</b>	<b>Abbreviation</b>	<b>Meaning</b>
AR .....	as required	HYD .....	hydraulic
ASM .....	assembly	INC .....	incorporated
CARR .....	carriage	LH .....	left hand
DEG .....	degrees	NI .....	nylon insert
FH .....	flat head	PPH .....	Phillips pan head
GA .....	gauge	PTH .....	Phillips truss head
HF .....	hex flange	PTO .....	power take off
HH .....	hex head	RH .....	right hand
HHF .....	hex head flange	SFH .....	slotted fillister head
HLH .....	hex lag head	SHH .....	slotted hex head
HJ .....	hex jam	SQH .....	square head
HOC .....	height-of-cut	SHWH .....	slotted hex washer head
HS .....	hex socket	SPH .....	slotted pan head
HSBH .....	hex socket button head	SRH .....	slotted round head
HSFH .....	hex socket flat head	STD .....	standard
HSH .....	hex socket head	TAP .....	self tapping
HWH .....	hex washer head	TTH .....	Torx truss head
HWHTF .....	hex washer head thread forming	WH .....	wing head



Sheet No.:3

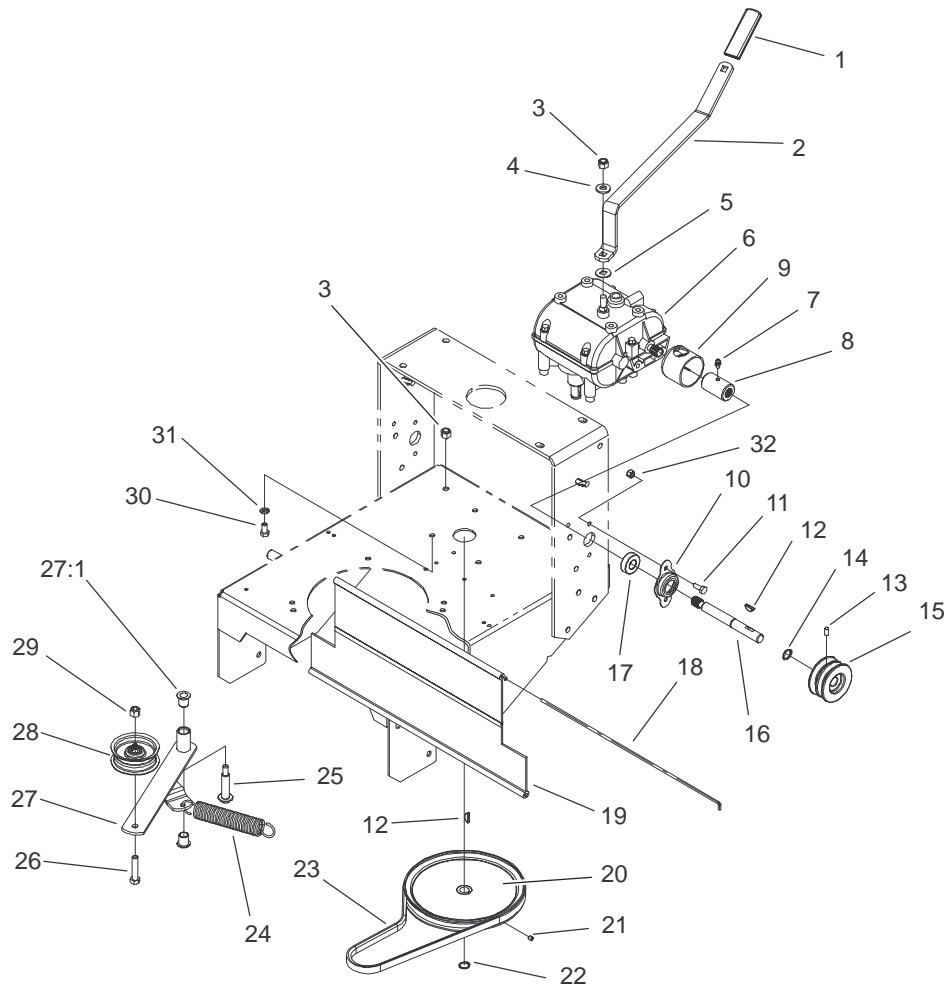
## Engine Installation Assembly

Ref. No.	Part No.	Qty.	Description	Ref. No.	Part No.	Qty.	Description
1	92-6877	1	Valve-Drain, Oil	25	112843	1	Washer
3	106-0699	1	Decal-Warning, Hot Surfaces	26	105-2635	1	Clutch/Brake
☆4		1	Engine-Kohler, Cv15t-41604	27	105-0827	1	Pulley-Drive
5	32144-19	1	Screw-Forming, Thread	28	608006	1	Key-Square
6	2412-87	1	Screw-Forming, Thread	29	94-5847-01	1	Cover-Pulley
7	2412-98	2	Clamp-Cable	30	56-6360	1	Filter-Fuel
8	47-2982	1	Clamp	31	3290-381	1	Tie-Cable
9	104-8136	1	Hose-Fuel	32	103-1964	1	Hose-Drain, Oil
10	12-3270	1	Harness-Wire				
11	3255-7	1	Screw				
12	32128-20	2	Washer-Lock/Ext				
13	237-124	1	Nut-HF				
14	104-6373	1	Grommet				
15	1-613235	4	Tube-Retainer				
16	1-633630	2	Washer				
17	1-633545	2	Grommet-Brake				
18	1-633543	1	Spacer-Grommet				
19	322-11	1	Strap-Clutch/Brake				
20	3256-23	2	Screw-HH				
21	33114-025	4	Washer-Flat				
22	3256-3	2	Screw-HH				
23	322-7	1	Washer-Flat				
24	3212-9	1	Screw-HH				

☆ Not serviced separately





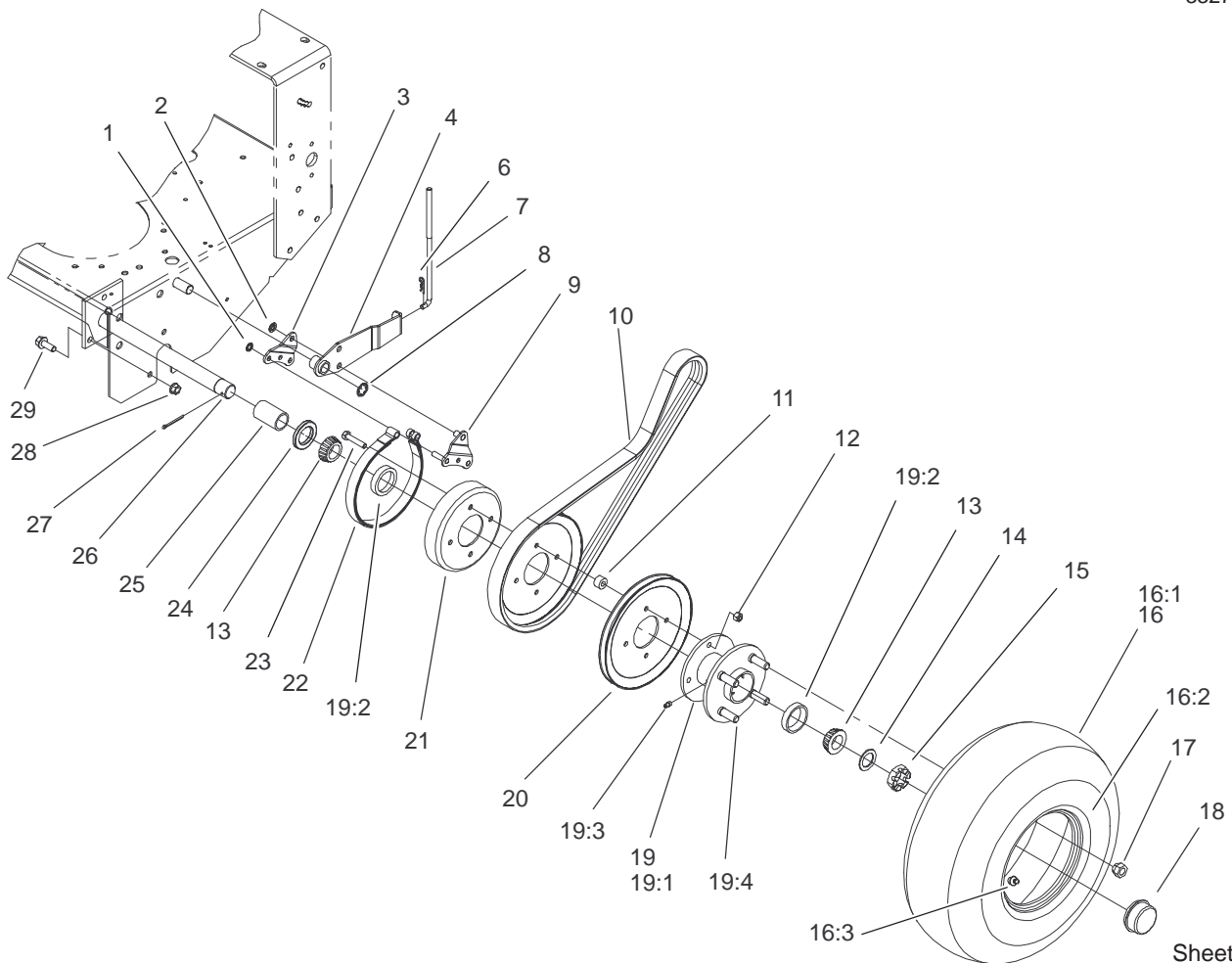


Sheet No.:7

## Transmission Drive Assembly

Ref. No.	Part No.	Qty.	Description
1	47-1970	1	Grip
2	98-3274-03	1	Lever-Shift
3	3296-6	2	Nut-Lock, NI
4	98-5975	1	Washer-Belleville
5	1-323379	1	Washer
6	1-323500	1	Transmission
7	302-5	2	Fitting-Grease
8	1-323680	2	Coupler
9	51-4220	2	Guard-Coupler
10	1-323254	2	Flange-Output
11	321-4	4	Screw-HH
12	3257-5	3	Key-Woodruff
13	3245-9	2	Screw-Set
14	32151-62	2	Ring-Retaining
15	105-2698	2	Pulley-Transmission
16	104-1102	2	Shaft-Output
17	1-323252	2	Bearing-Shaft
18	95-1529	1	Rod-Shield
19	95-1526	1	Shield-Trailing
20	105-5646	1	Pulley-Driven
21	3245-1	1	Screw-Set, HSH
22	32120-64	1	Ring-Snap, External
23	105-5668	1	V-Belt
24	68-2190	1	Spring
25	27-6230	1	Bolt-Wheel
26	323-9	1	Screw-HH

Ref. No.	Part No.	Qty.	Description
27	16-7509	1	Lever-Idler
27:1	256-155	2	Bushing-Flange
28	62-4540	1	Pulley
29	3296-39	1	Nut-Lock, NI
30	322-2	4	Screw-HH
31	3253-4	4	Washer-Lock
32	3296-42	4	Nut-Lock, NI



Sheet No.:8

## Wheel Drive and Brake Assembly

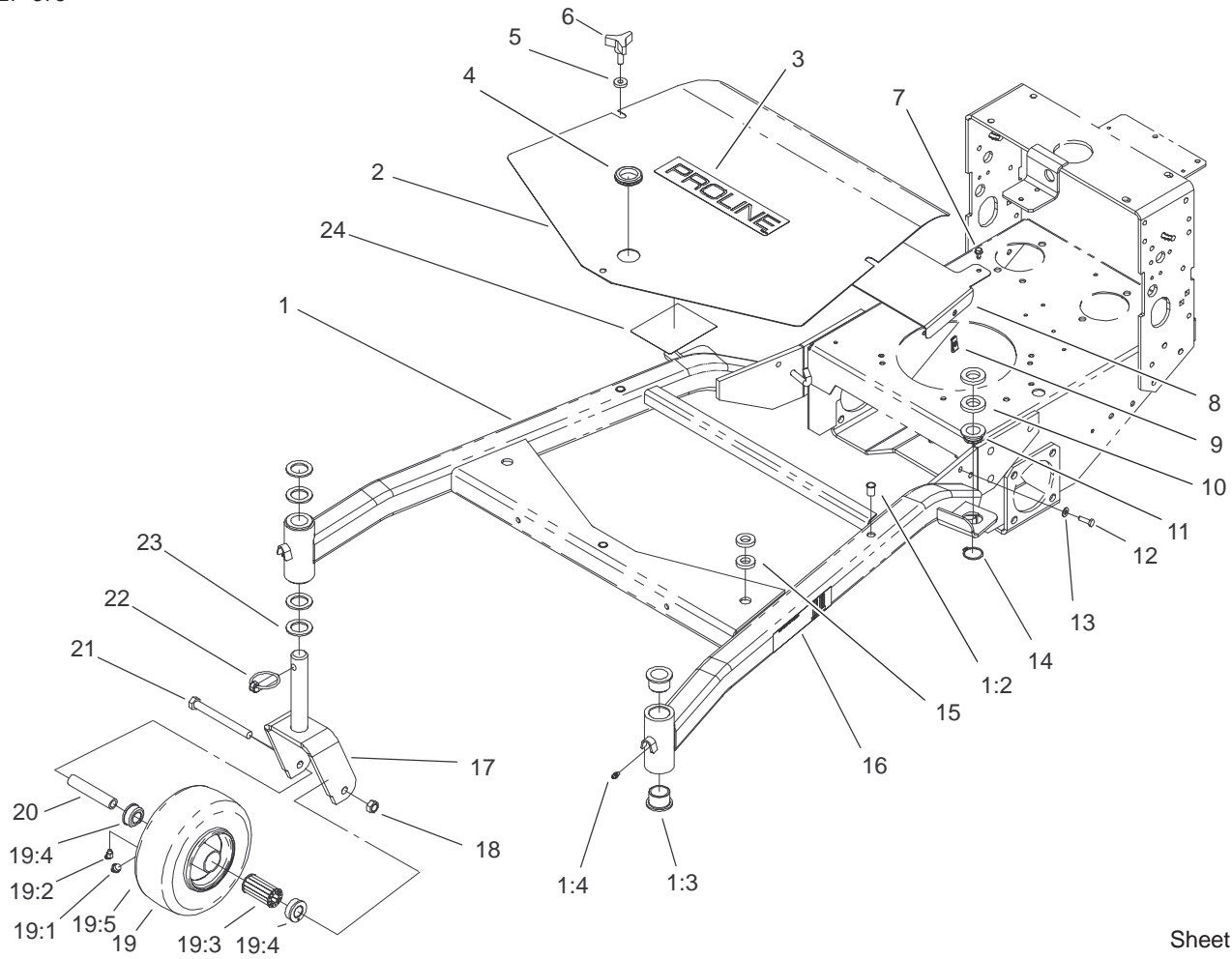
Ref. No.	Part No.	Qty.	Description
1	32151-72	4	Ring-Retaining
2	32151-56	2	Ring-Retaining, External
3	105-4651-01	2	Plate-Link, Brake
4	106-5537-01	2	Brake Arm ASM
6	3290-307	2	Pin-Hair
7	51-4580	2	Rod-Brake
8	32151-40	2	Ring-Retaining
9	105-4652-01	2	Brake Link ASM
10	51-4290	2	V-Belt
11	51-4170	8	Spacer-Pulley
12	3296-29	8	Nut-Lock, NI
13	254-94	4	Bearing-Cone, Taper
14	1-523157	2	Washer-Spacer
15	1-809082	2	Nut-SHH
16	104-6321	2	Wheel And Tire ASM
16:1	104-6322	1	Tire
16:2	104-6323	1	Wheel
16:3	232-27	1	Stem-Valve
17	242-50	8	Nut-Lug
18	241-119	2	Cap-Dust
19	1-413333	2	Hub-Wheel ASM
☆19:1		1	Hub-Wheel
19:2	254-72	2	Bearing-Cup, Tapered
19:3	302-19	1	Fitting-Grease
19:4	1-633926	4	Stud-Wheel

Ref. No.	Part No.	Qty.	Description
20	51-4160-03	4	Pulley-Wheel
21	1-323261	2	Drum-Brake
22	1-323262	2	Band-Brake
23	322-8	8	Screw-HH
24	1-543511	2	Seal-Grease
25	104-1197	2	Spacer-Wheel
26	104-1196-01	1	Axle ASM
27	1-806800	2	Pin-Cotter
28	32128-21	6	Nut-HF
29	3234-11	6	Screw-HHF

☆ Not serviced separately





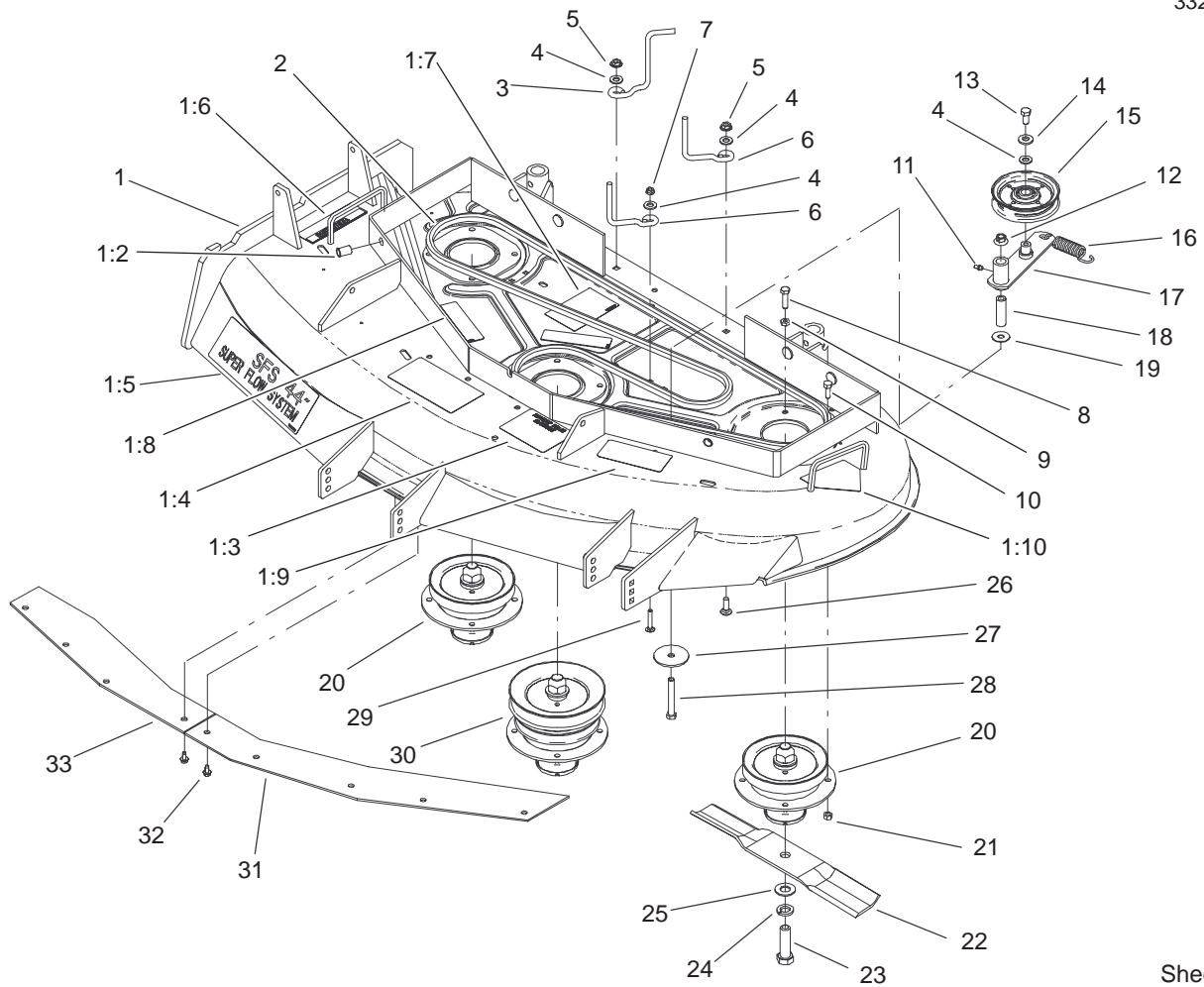


Sheet No.:2

## Carrier Frame Assembly

Ref. No.	Part No.	Qty.	Description
1	106-0707	1	Carrier Frame ASM
1:2	32148-9	3	Insert-Nut
1:3	94-1291	4	Bushing-Special
1:4	302-5	2	Fitting-Grease
2	106-0537-01	1	Cover
3	106-0719	1	Decal-Proline
4	240-3	1	Grommet-Rubber
5	106-0565	3	Washer-Rubber
6	104-8587	3	Knob
7	12-3270	2	Screw
8	105-9389-01	1	Shield-Heat
9	3290-199	2	Nut-Speed
10	104-1105	4	Spacer-Support, Deck
11	1-513336	2	Bushing-Deck
12	321-5	2	Screw-HH
13	3256-22	2	Washer-Flat
14	32120-33	2	Ring-Retaining
15	105-0842	4	Spacer
16	106-0635	2	Decal-HOC
17	105-3159-01	2	Castor Fork ASM
18	32153-5	2	Nut-Lock
19	100-6451	2	Castor Wheel ASM
19:1	232-27	1	Stem-Valve
19:2	302-11	1	Fitting-Lube, 45°
19:3	83-4740	1	Bearing
19:4	62-5580	2	Bearing-Outside

Ref. No.	Part No.	Qty.	Description
19:5	100-6452	1	Tire-Tubeless
20	100-6453	2	Bushing-Spanner
21	325-19	2	Screw-HH
22	283-71	2	Pin-Lynch
23	3-6781	8	Washer-Thrust
24	106-5505	1	Decal-Service

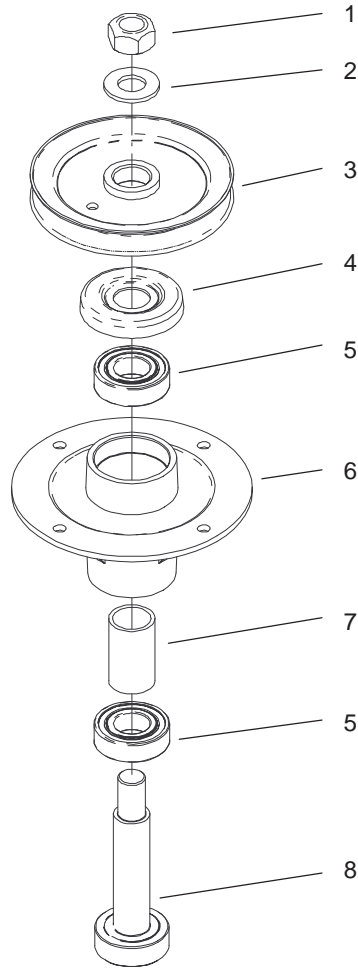


Sheet No.:3

## Spindle, Pulley and Belt Assembly

Ref. No.	Part No.	Qty.	Description
1	106-0617	1	Deck ASM
1:2	32148-10	2	Insert-Threaded
1:3	106-5532	1	Decal-Antiscalp
1:4	66-1340	1	Decal-Danger
1:5	106-0704	1	Decal-Sfs, 44"
1:6	104-8569	1	Decal-Warning
1:7	104-8186	1	Decal-Routing, Belt
1:8	67-5360	3	Decal-Danger
1:9	68-8340	1	Decal-Torque
1:10	43-8480	1	Decal-Danger
2	27-1160	1	V-Belt
3	106-5488	1	Guide-Belt
4	3256-24	4	Washer-Flat
5	32128-13	2	Nut-HF
6	52-4780	2	Rod-Belt
7	32128-10	1	Locknut-Flange
8	322-6	1	Screw-HH
9	3218-2	1	Nut-Jam
10	322-4	11	Screw-HH
11	302-19	1	Fitting-Grease
12	32128-19	1	Nut-HF
13	323-4	1	Screw-HH
14	98-5975	1	Washer-Belleville
15	65-5940	1	Pulley-Idler
16	54-2730	1	Spring-Extension
17	104-8110	1	Idler Arm ASM

Ref. No.	Part No.	Qty.	Description
18	104-8113	1	Tube-Idler
19	52-2860	1	Washer
20	106-0786	2	Spindle Housing ASM
21	32152-1	12	Nut-Lock, NI
22	54-0010	3	Blade
23	51-4060	3	Screw-Blade
24	3253-8	3	Washer-Lock
25	3256-27	3	Washer-Flat
26	3230-2	2	Bolt-CARR
27	20-9530	1	Washer-End
28	323-13	1	Screw-HH
29	3229-4	1	Screw-CARR
30	106-0784	1	Spindle Housing ASM
31	100-3258-03	1	Plate-Blowout, LH
32	12-3270	9	Screw
33	100-3257-03	1	Plate-Blowout, RH



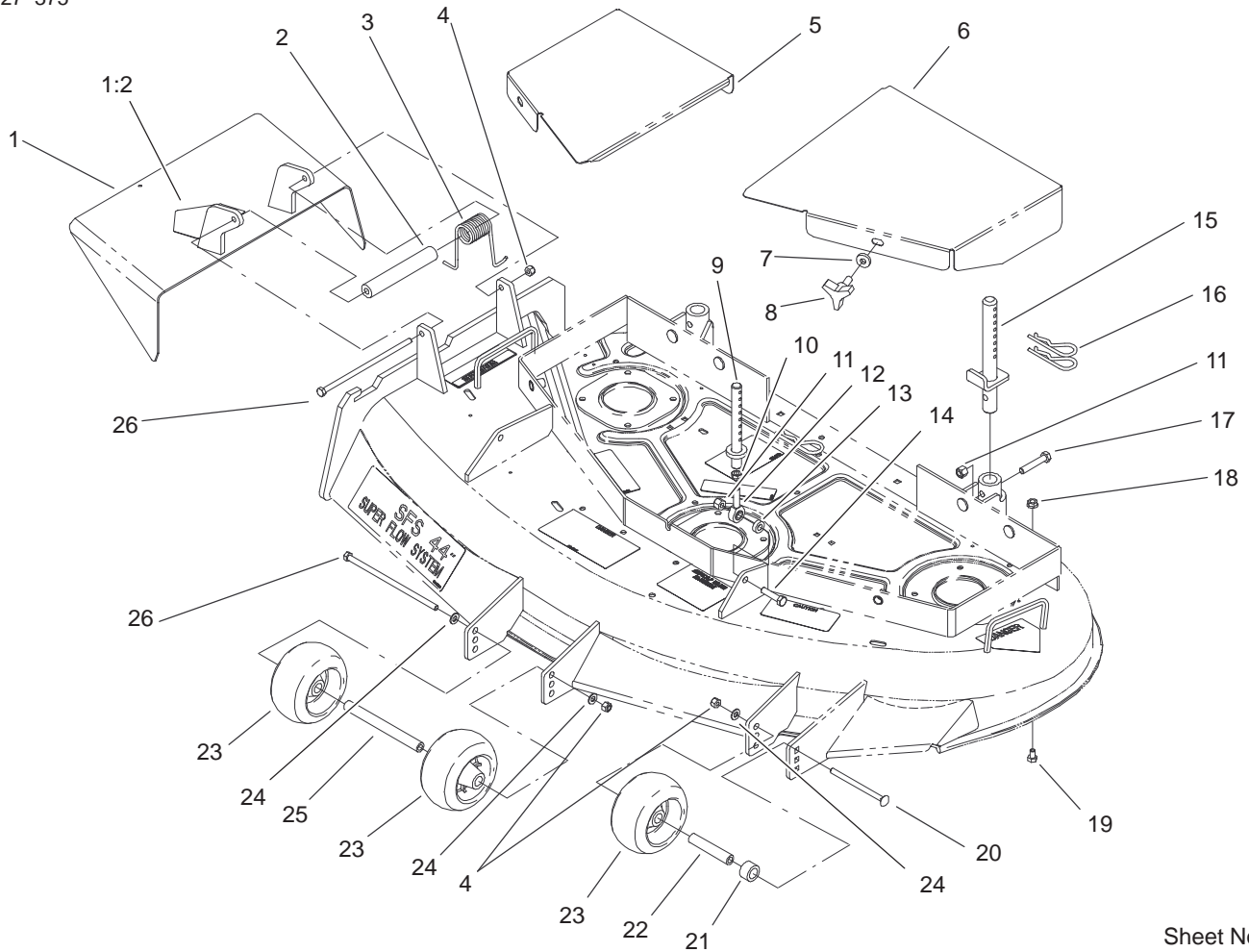
Sheet No.:A1

### Spindle Assembly No. 106-0786

Ref. No.	Part No.	Qty.	Description
1	3219-7	1	Nut-Hex
2	7-4150	1	Washer
3	104-1181	1	Pulley ASM
4	106-0873	1	Shield-Bearing
5	104-6325	2	Bearing
6	106-0818	1	Housing-Spindle
7	106-0794	1	Spacer-Bearing
8	106-0780	1	Shaft-Spindle

Ref. No.	Part No.	Qty.	Description





Sheet No.:4

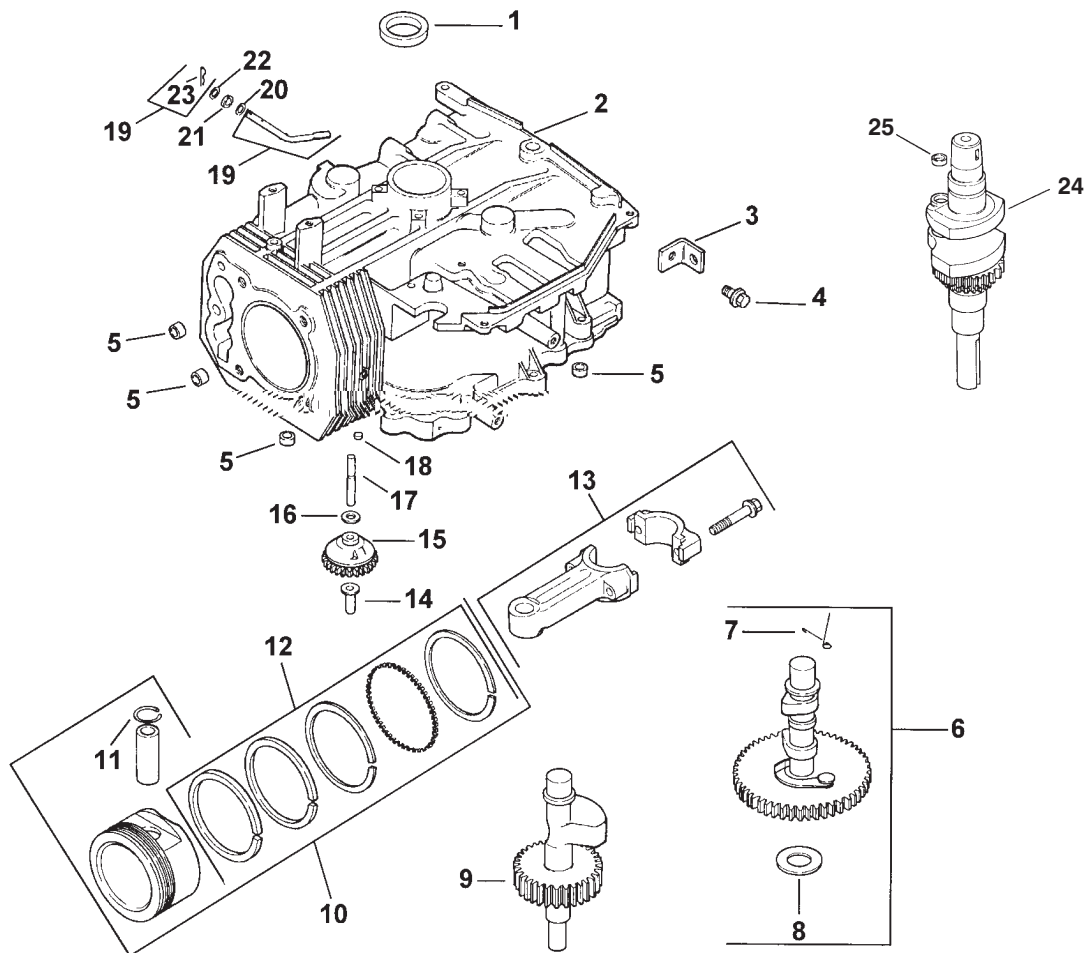
## Deck Assembly

Ref. No.	Part No.	Qty.	Description
1	105-4625	1	Deflector ASM
1:2	93-1122	1	Decal-Danger
2	105-4622	1	Spacer
3	104-8554	1	Spring-Torsion
4	3296-29	3	Nut-Lock, NI
5	106-3363-01	1	Cover-Belt, RH
6	106-3362-01	1	Cover-Belt, LH
7	106-0565	2	Washer-Rubber
8	104-8587	2	Knob
9	106-0684	2	Front Pin ASM
10	3220-3	2	Nut-Jam
11	3296-39	4	Nut-Lock, NI
12	1-613204	2	Balljoint
13	104-1156	2	Spacer
14	323-8	2	Screw-HH
15	106-3365	2	Rear Pin ASM
16	3290-256	6	Pin-Hair
17	323-10	2	Screw-HH
18	32128-20	4	Nut-HF
19	322-1	4	Screw-HH
20	3230-30	1	Screw-CARR
21	106-0563	1	Spacer-Wheel
22	106-0545	1	Bushing-Roller
23	68-2730	3	Wheel-Gage
24	3256-23	3	Washer-Flat

Ref. No.	Part No.	Qty.	Description
25	98-5967	1	Spacer
26	322-50	2	Screw-HH



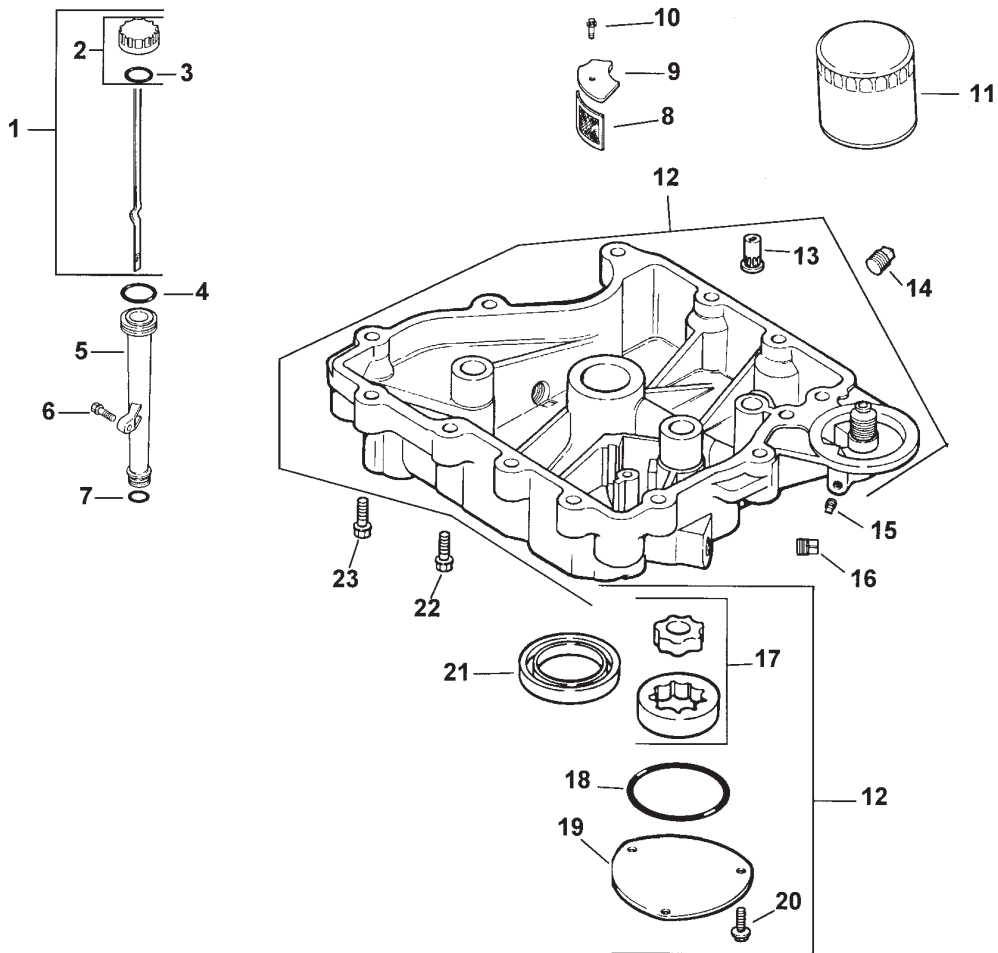




## Crankshaft Assembly Kohler CV15T-41604

Ref. No.	Part No.	Qty.	Description	Ref. No.	Part No.	Qty.	Description
1	12 032 03-S	1	Seal-Crankshaft	13	12 067 05-S	1	Rod-Connecting, STD
2	12 522 18-S	1	Shortblock	13	12 067 06-S	1	Rod-Connecting .25
3	12 445 02-S	1	Strap-Lifting	14	12 380 01-S	1	Pin-Governor
4	M-839025-S	1	Screw-HF M8x1.25x22				Regulating
5	24 380 13-S	4	Dowel-Locating	15	12 043 05-S	1	Gear-Governor
6	12 755 49-S	1	Kit-Camshaft (Incl.7-8)	16	M-631005-S	1	Washer-Plain, 6mm
7	12 089 31-S	1	Spring-Actuating	17	12 144 02-S	1	Shaft-Governor Gear
8	12 422 07-S	A/R	Shim-Camshaft, White	18	52 139 09-S	1	Plug-Cup
8	12 422 08-S	1	Shim-Camshaft, Blue	19	12 755 64-S	1	Kit-Governor Cross
8	12 422 09-S	A/R	Shim-Camshaft, Red				Shaft (Incl. 23)
8	12 422 10-S	A/R	Shim-Camshaft, Yellow	20	X-25-102-S	1	Washer-Plain, 1/4
8	12 422 11-S	A/R	Shim-Camshaft, Green	21	12 032 01-S	1	Seal-Governor Cross
8	12 422 12-S	A/R	Shim-Camshaft, Gray				Shaft
8	12 422 13-S	A/R	Shim-Camshaft, Black	22	M-631015-S	1	Washer-Plain, 6mm
9	12 144 27-S	1	Shaft-Balance	23	12 154 05-S	1	Clip-Hitch Pin
10	12 874 07-S	1	Piston w/Ring Set STD (Incl. 11,12)	24	12 014 30-S	1	Crankshaft ASM (Incl. 25)
10	12 874 08-S	1	Set-Piston w/Ring .25	25	12 139 01-S	1	Plug-Cup
10	12 874 09-S	1	Set-Piston w/Ring .50	*	12 755 93-S	1	Set-Gasket
10	12 874 11-S	1	Set-Piston w/Ring .08				
11	12 018 02-S	2	Retainer-Piston Pin				
12	12 108 07-S	1	Ring Set STD				
12	12 108 08-S	1	Ring Set .25				
12	12 108 09-S	1	Ring Set .50				

\* Not illustrated  
Order Parts from Kohler



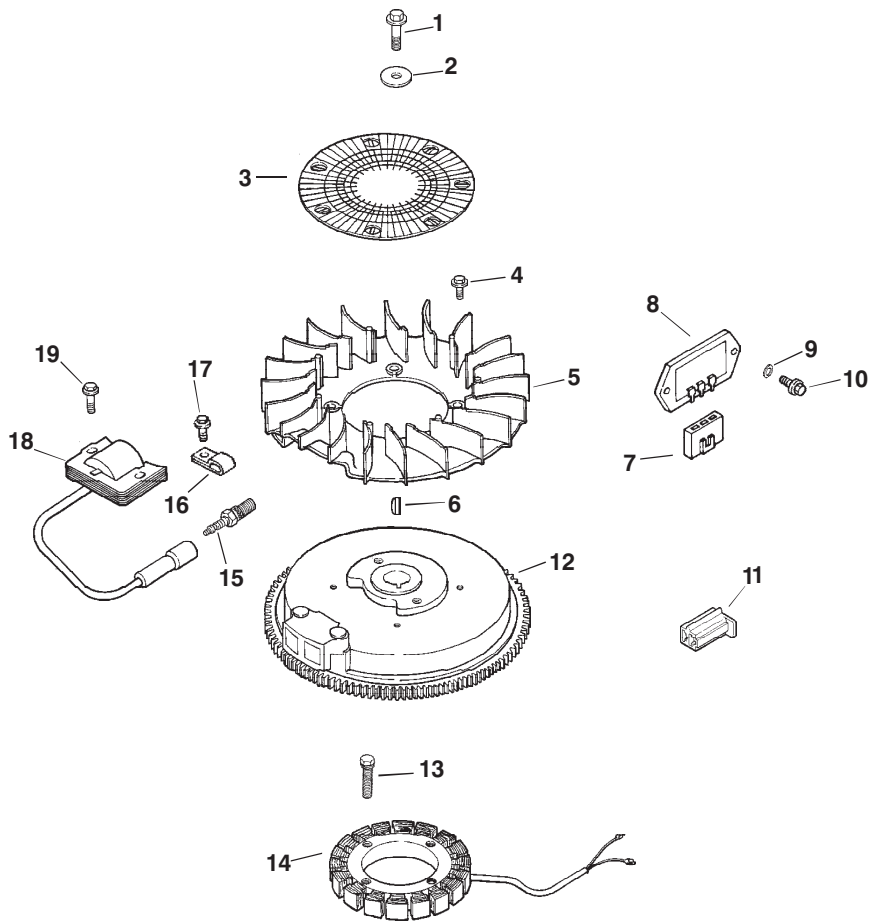
## Oil Pan/Lubrication Assembly Kohler CV15T-41604

Ref. No.	Part No.	Qty.	Description
1	12 038 01-S	1	Dipstick ASM(Incl. 2-3)
2	25 755 13-S	1	Kit-Oil Fill Cap (Incl. 3)
3	12 153 03-S	1	O Ring-Dipstick
4	12 153 02-S	1	O Ring-Upper Oil Fill Tube
5	12 123 04-S	1	Tube-Oil Fill
6	M-545020-S	1	Screw-HF, M5x0.8x20
7	12 153 01-S	1	O Ring-Lower Oil Fill Tube
8	25 162 07-S	1	Screen-Oil Pickup
9	12 096 03-S	1	Cover-Oil Pickup Screen
10	M-545016-S	1	Screw-HF, M5x0.8x16
11	52 050 02-S	1	Filter-Oil
12	12 199 50-S	1	Pan ASM - Oil (Incl.13, 17-20)
13	25 462 09-S	1	Valve-Oil Pressure Relief
14	25 139 57-S	1	Plug-Pipe, 3/8 SH
15	25 139 52-S	1	Plug-Pipe, 1/8
16	25 139 62-S	1	Plug-Pipe, 3/8 HSH
17	12 393 01-S	1	Pump-Oil
18	12 153 06-S	1	O Ring-Oil Pump Cover

Ref. No.	Part No.	Qty.	Description
19	12 096 34-S	1	Cover-Oil Pump
20	M-545016-S	3	Screw-HF, M5x0.8x16
21	12 032 03-S	1	Seal-Oil (PTO End)
22	24 086 16-S	11	Screw-HF, M8x1.25x45
23	24 086 17-S	1	Screw-HF, M8x1.25x45

Order Parts From Kohler





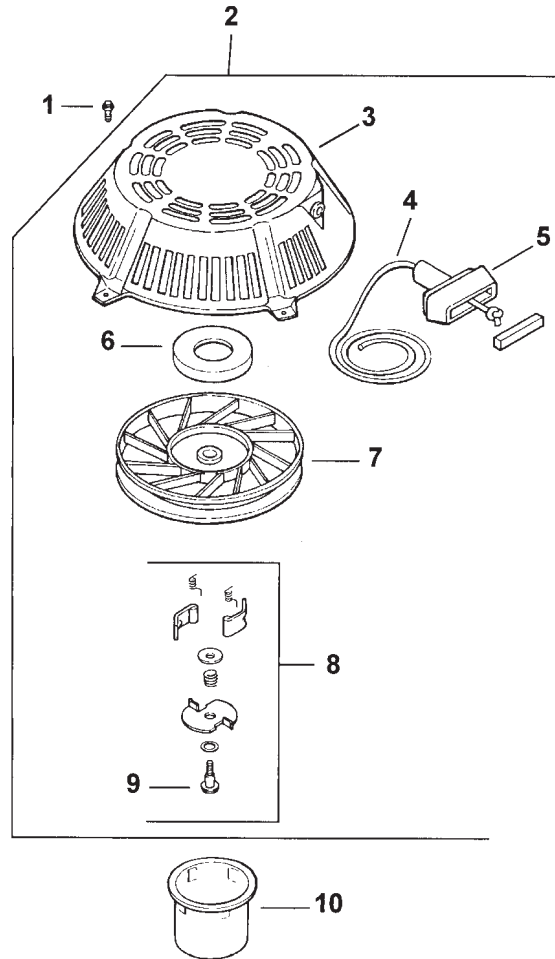
## Ignition/Electrical Assembly Kohler CV15T-41604

Ref. No.	Part No.	Qty.	Description
1	12 086 14-S	1	Screw-HF,M10x1.5x46
2	12 468 03-S	1	Washer-Plain, 3/8
3	12 162 03-S	1	Screen-Grass
4	25 086 47-S	4	Bolt-Shoulder
5	12 157 03-S	4	Fan
6	X-42-15-S	1	Key
7	236602-S	1	Connector-Rectifier, Regulator(3 contact)
8	12 403 01-S	1	Rectifier-Unregulated, 15 amp
9	X-22-11-S	2	Washer - Lock
10	M-639016-S	2	Screw-HF, M6x1.0x16
11	41 155 03-S	1	Connector
12	12 025 33-S	1	Flywheel
13	M-548025-S	2	Screw-HH M5x0.8x25
14	237878-S	1	Kit-Stator, 15 Amp
15	12 132 06-S	1	Spark Plug
16	X-728-1-S	2	Clip-Cable
17	M-545010-S	2	Screw-HF, M5x0.8x10
18	12 584 05-S	1	Module-Ignition
19	M-545020-S	2	Screw-HF, M5x0.8x20
*	25 518 05-S	1	Lead-Black, Rectifier/Regulator,(5"-14Gauge Uninsulated Push On

Ref. No.	Part No.	Qty.	Description
*	12 518 01-S	1	Tab Terminals) Lead-White, Ground To Kill, (19"-18 Gauge Fully Insulated Push On Tab and Uninsulated Push On Tab Terminals
*	25 518 12-S	1	Lead-Black,Ground, (5"-12Gauge-Insulated Grip Barrel Eyelet Terminals

\* Not illustrated  
Order Parts From Kohler



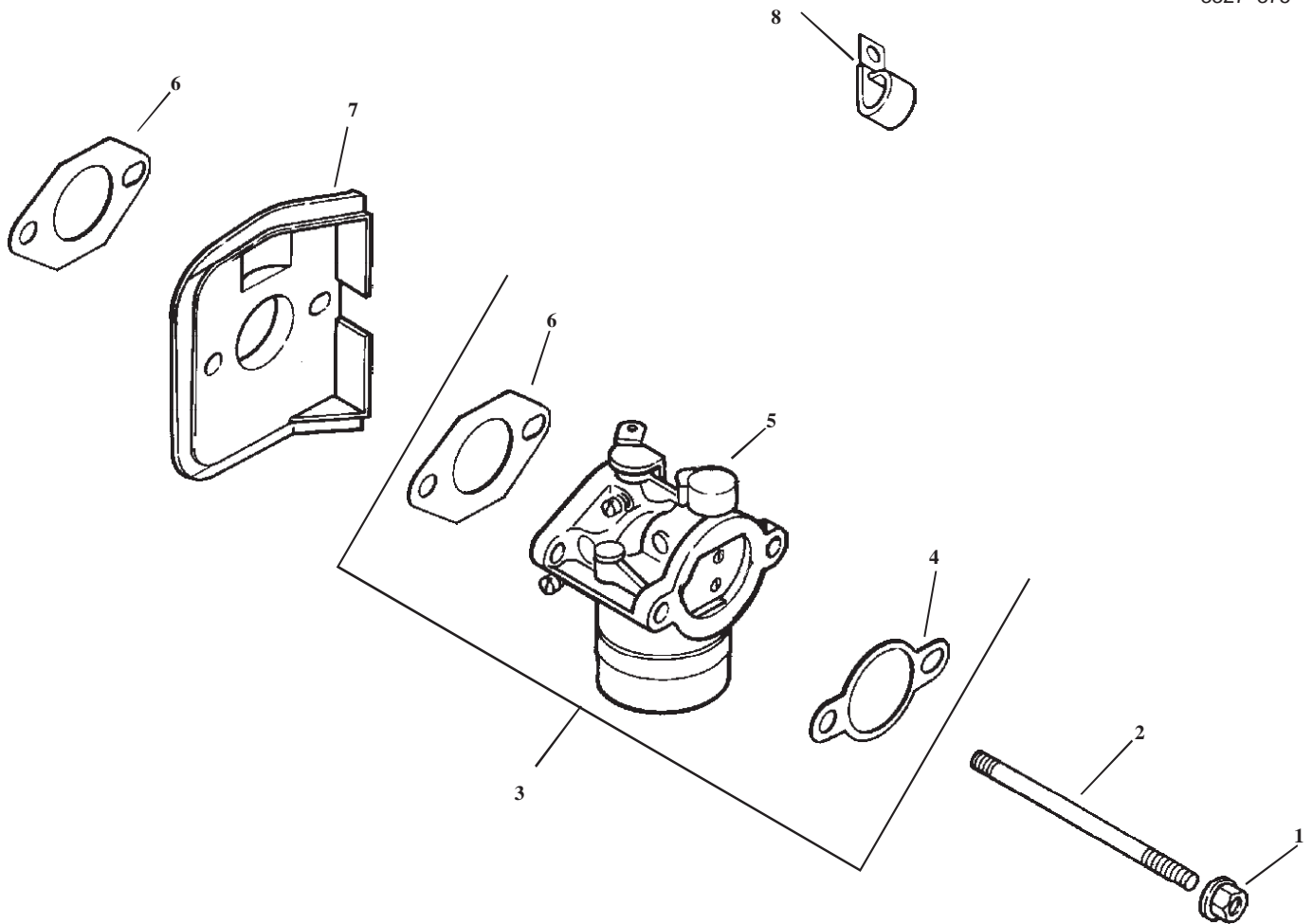


## Starter Assembly Kohler CV15T-41604

Ref. No.	Part No.	Qty.	Description
1	M-550010-S	5	Screw-HF, M5x0.8x10
2	12 165 01-S	1	Starter ASM Retractable (Incl. 3-9)
3	12 081 01-S	1	Housing-Starter
4	12 160 01-S	1	Rope-Starter
5	25 166 01-S	1	Handle-Recoil
6	12 089 06-S	1	Spring & Keeper
7	12 093 01-S	1	Pulley
8	12 757 06-S	1	Kit-Dog Repair (incl. 9)
9	41 086 09-S	1	Screw-Posidrive
10	15 109 01-S	1	Cup-Drive
*	12 113 07-S	1	Decal-Starting

Ref. No.	Part No.	Qty.	Description

\* Not illustrated  
Order Parts From Kohler

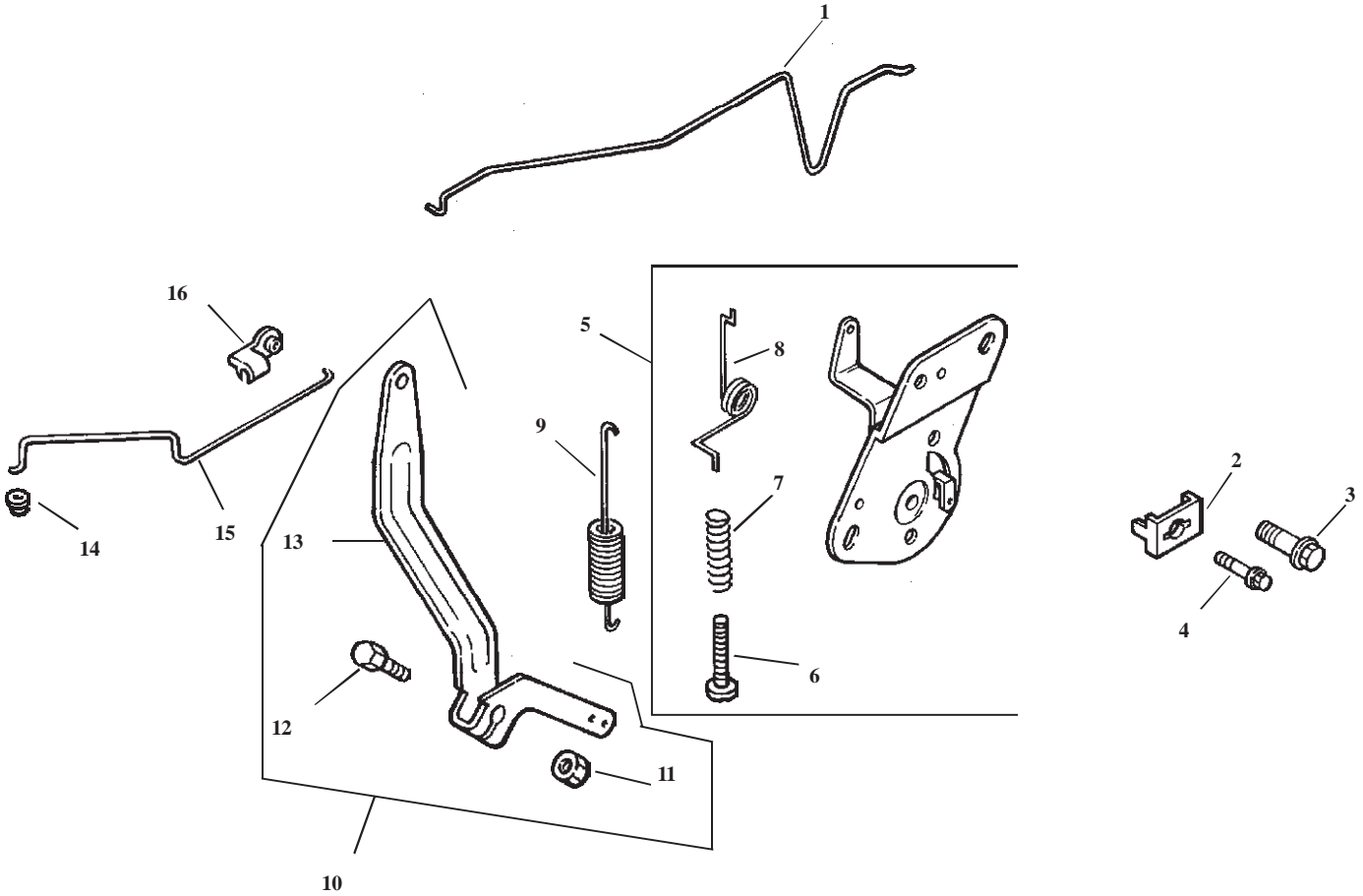


### Fuel System Assembly Kohler CV15T-41604

Ref. No.	Part No.	Qty.	Description
1	M-641060-S	2	Nut-HF M6x1.0
2	M-629116-S	2	Stud M6x1.0x116
3	12 853 80-S	1	Kit-Carburetor w/Gaskets (Incl. 4-6)
4	12 041 02-S	1	Gasket-Air Cleaner
5	12 053 80	1	Carburetor ASM (For Information Only Not Available Separately) (Service With Kits 12 757 02-S Float Kit 12 757 03-S Carb. Repair Kit and 12 757 08-S Choke Repair Kit)
6	12 041 01-S	2	Gasket-Carburetor
7	12 265 04-S	1	Deflector-Heat
8	47 154 01-S	1	Clip-Cable
*	12 757 02-S	1	Kit-Float
*	12 757 08-S	1	Kit-Choke Repair
*	12 757 03-S	1	Kit-Carburetor Repair

Ref. No.	Part No.	Qty.	Description

\* Not illustrated  
Order Parts From Kohler

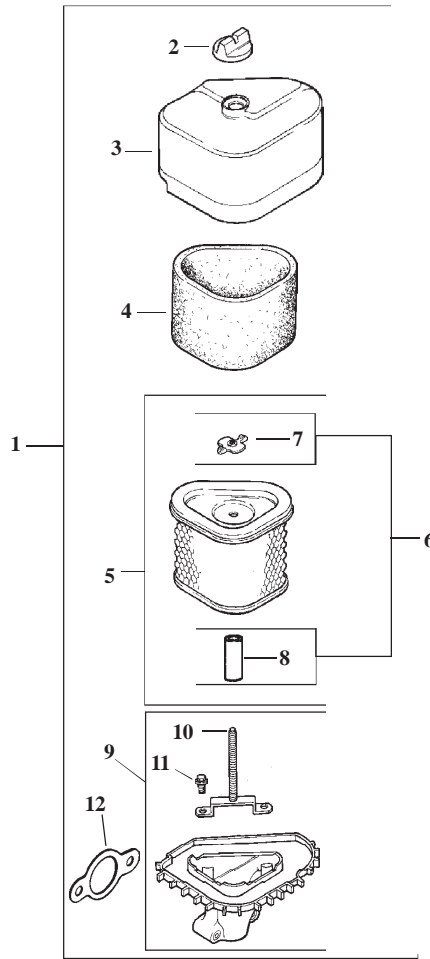


## Engine Control Assembly Kohler CV15T-41604

Ref. No.	Part No.	Qty.	Description
1	12 079 07-S	1	Linkage-Choke
2	12 237 01-S	1	Clamp-Cable
3	M-664020-S	2	Screw-Lobed Socket M6x1.0x20
4	M-545016-S	1	Screw-HF M5x .08x16
5	12 536 01-S	1	Control-Speed ASM (Incl. 6-8)
6	M-443025-S	1	Screw-SPH, M4x0.7x25
7	12 089 11-S	1	Spring-Choke Adjustment
8	12 089 23-S	1	Spring-Choke Return
9	12 089 19-S	1	Spring-Governor
10	12 755 83-S	1	Kit - Governor Lever (Incl. 11-13)
11	12 100 07-S	1	Nut-HF
12	52 211 04-S	1	Bolt - Round HD
13	12 090 28-S	1	Lever-Governor
14	25 158 08-S	1	Bushing-Linkage Retaining
15	12 079 01-S	1	Linkage-Throttle
16	25 158 11-S	1	Bushing-Throttle Linkage

Ref. No.	Part No.	Qty.	Description

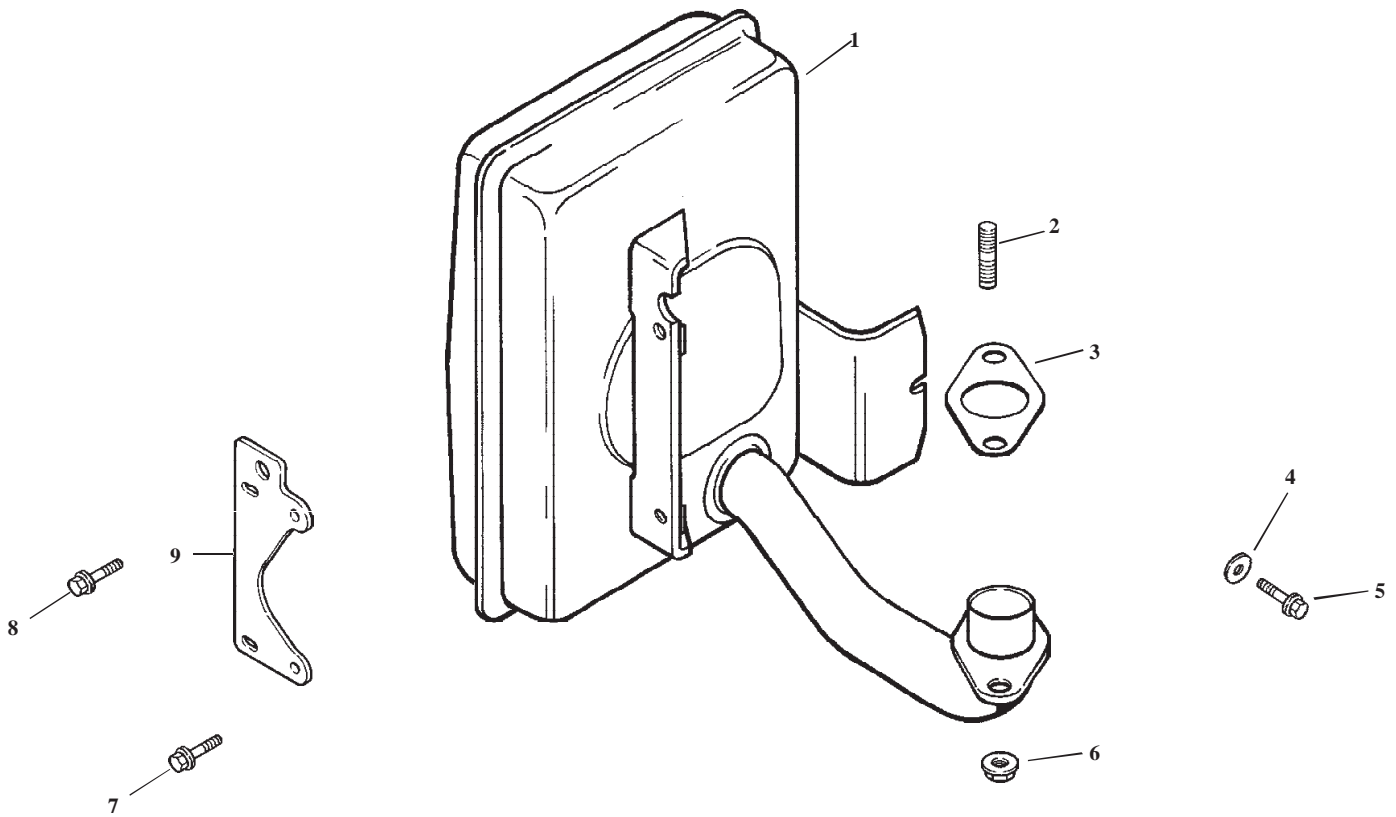
Order Parts From Kohler



## Air Intake/Filtration Assembly Kohler CV15T-41604

Ref. No.	Part No.	Qty.	Description	Ref. No.	Part No.	Qty.	Description
1	12 743 02-S	1	Kit-Air Cleaner (Incl. 2-12)				
2	25 341 03-S	1	Knob-Air Cleaner Cover				
3	12 096 38-S	1	Cover-Air Cleaner				
4	12 083 12-S	1	Element-Precleaner				
5	12 083 10-S	1	Element-Air Cleaner (Incl. 6-8)				
6	12 743 12-S	1	Kit-Seal (Incl. 7-8)				
7	12 100 08-S	1	Nut-Wing				
8	12 032 11-S	1	Seal				
9	12 094 07-S	1	Base-Air Cleaner (Incl. 10,11)				
10	12 072 04-S	1	Stud-M6x1.0x66				
11	12 086 01-S	2	Screw-#10 Hi-Lo Thread Forming				
12	12 041 02-S	1	Gasket-Air Cleaner				
*	12 113 04-S	1	Decal-Air Cleaner				

\* Not illustrated  
Order Parts From Kohler



## Exhaust Assembly Kohler CV15T-41604

Ref. No.	Part No.	Qty.	Description
1	12 068 44-S	1	Muffler
2	25 072 04-S	2	Stud M8x1.25x33
3	12 041 03-S	1	Gasket-Exhaust Manifold
4	X-25-78-S	1	Washer-Plain, 1/4
5	M-545016-S	1	Screw-HF, M5x0.8x16
6	M-841080-S	2	Nut-HF, M8x1.25
7	M-645016-S	2	Screw-HF, M6x1.0x16
8	M-645025-S	2	Screw-HF, M6x1.0x25
9	12 126 71-S	1	Bracket-Muffler

Ref. No.	Part No.	Qty.	Description

Obtain Parts From Kohler



