



## Mid-Size Mower

### ProLine T-Bar Gear 15 HP with 44in Side Discharge Mower

Model No. 30320—2300000001 and Up

## Parts Catalog

### Ordering Replacement Parts

To order replacement parts, please supply: the part number, the quantity, and the description of each part desired.

### Understanding Reference Numbers

Each identified part in an illustration has a reference number. The reference number for a part also appears in the parts list, along with other information about the part.

This catalog uses two special reference number formats, one to indicate parts in a service assembly and another to indicate the quantity of a given part in an illustration.

### Service Assembly Reference Numbers

Parts in service assemblies have reference numbers in the form **a:b**. The **a** represents the reference number of the entire service assembly and the **b** represents a sequential number unique to each part within the service assembly.

For example, a wheel assembly might be identified by reference number **6**, the tire by **6:1**, the valve by **6:2**, and the wheel by **6:3**. When you order the assembly identified by reference number **6**, you receive all parts identified by reference numbers **6:1**, **6:2**, and **6:3**. However, you may also order any part individually.

Reference numbers of this type appear in illustrations and in part lists.

### Reference Numbers Indicating Quantity

In an illustration, if a reference number indicates more than one part, the reference number has the form **nX y**. The **n** represents the quantity of the part, the **X** is the multiplication symbol, and the **y** represents the reference number.

For example, in an illustration, the reference number **2X 37** means that two of the parts identified by reference number **37** are indicated.

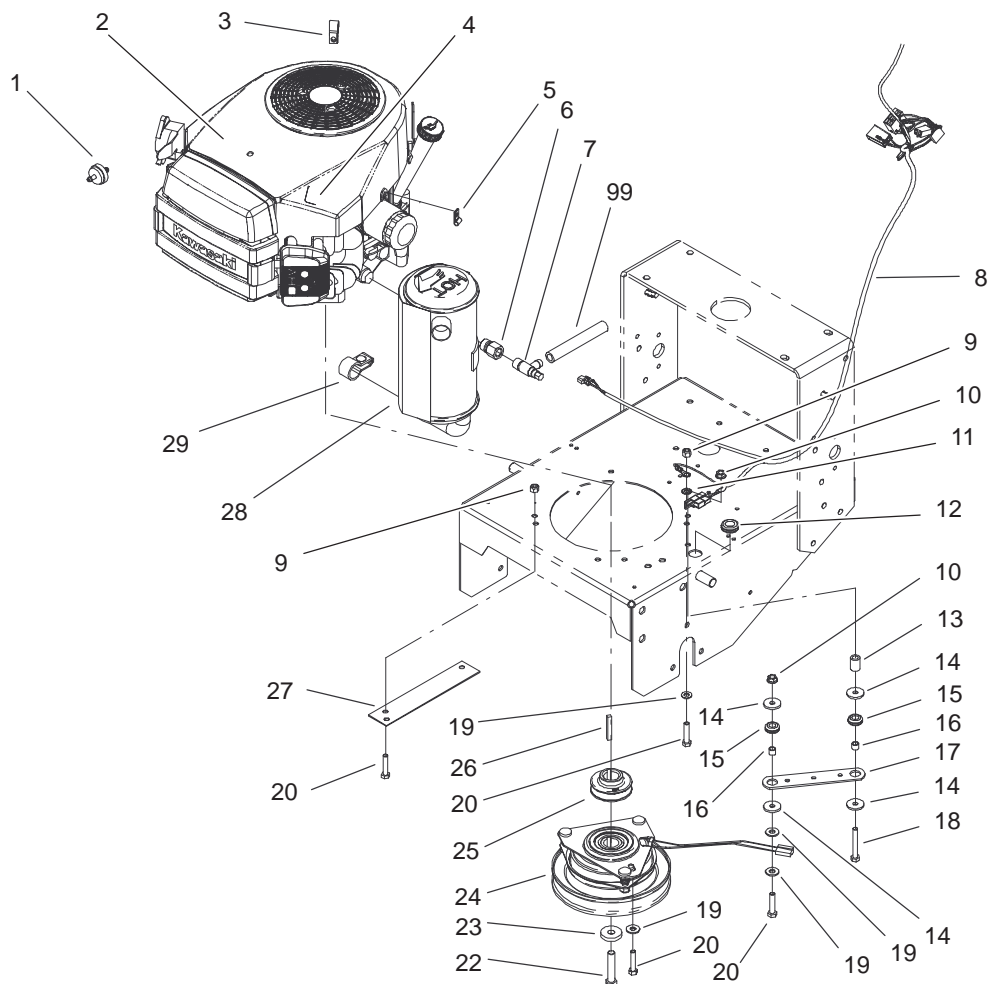
## Contents

<b>Description</b>	<b>Page</b>	<b>Description</b>	<b>Page</b>
Engine Installation Assembly .....	3	Carrier Frame Assembly .....	10
Fuel Tank Assembly .....	4	Spindle, Pulley and Belt Assembly .....	11
Lower Control Assembly .....	5	Spindle Assembly No. 106–0786 .....	12
Transmission Drive Assembly .....	6	Spindle Assembly No. 106–0784 .....	13
Wheel Drive and Brake Assembly .....	7	Deck Assembly .....	14
Upper Handle Assembly .....	8	Drive Belt and Tensioner Assembly .....	15
Control Panel Assembly .....	9	Electrical Schematic .....	16

## Part Description Abbreviations

Part descriptions in this catalog may include the following abbreviations.

<b>Abbreviation</b>	<b>Meaning</b>	<b>Abbreviation</b>	<b>Meaning</b>
AR .....	as required	HYD .....	hydraulic
ASM .....	assembly	INC .....	incorporated
CARR .....	carriage	LH .....	left hand
DEG .....	degrees	NI .....	nylon insert
FH .....	flat head	PPH .....	Phillips pan head
GA .....	gauge	PTH .....	Phillips truss head
HF .....	hex flange	PTO .....	power take off
HH .....	hex head	RH .....	right hand
HHF .....	hex head flange	SFH .....	slotted fillister head
HLH .....	hex lag head	SHH .....	slotted hex head
HJ .....	hex jam	SQH .....	square head
HOC .....	height-of-cut	SHWH .....	slotted hex washer head
HS .....	hex socket	SPH .....	slotted pan head
HSBH .....	hex socket button head	SRH .....	slotted round head
HSFH .....	hex socket flat head	STD .....	standard
HSH .....	hex socket head	TAP .....	self tapping
HWH .....	hex washer head	TTH .....	Torx truss head
HWHTF .....	hex washer head thread forming	WH .....	wing head



Sheet No.: 4

### Engine Installation Assembly

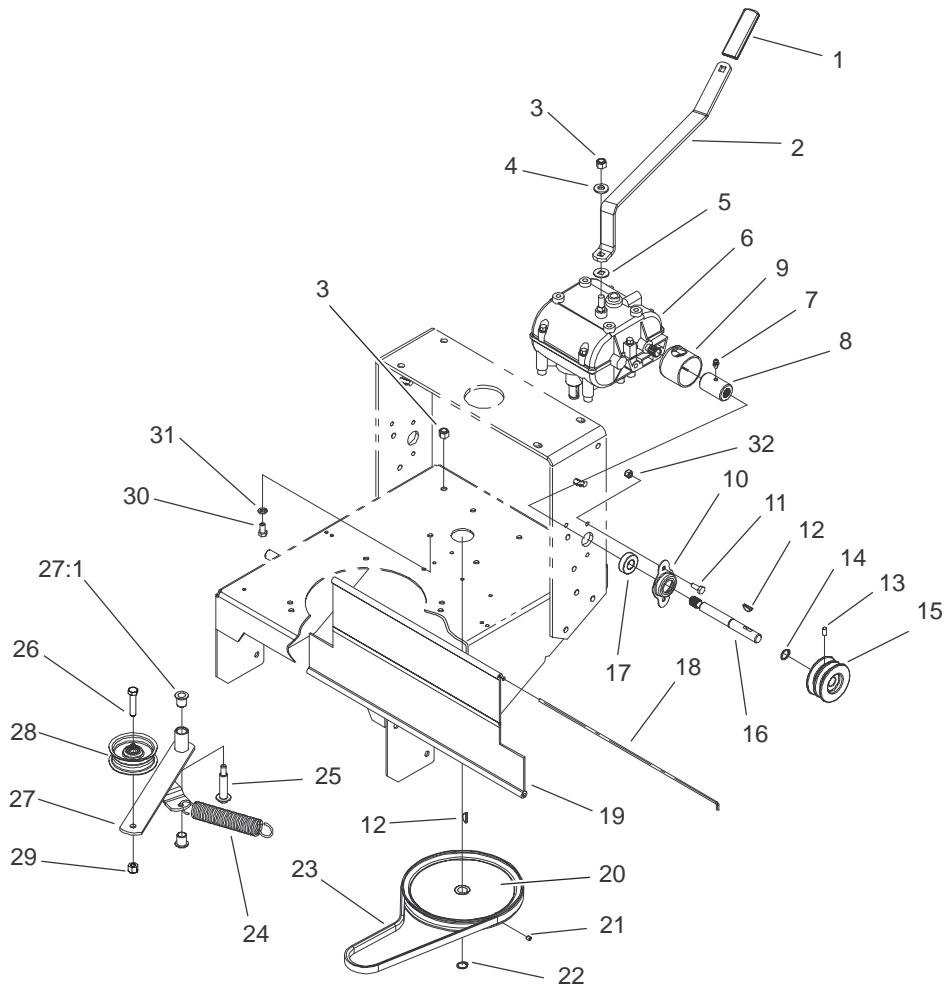
Ref. No.	Part No.	Qty.	Description
1	56-6360	1	Filter-Fuel
☆2		1	Engine-Kawasaki, Fh451v-As11
3	2412-87	1	Clamp-Cable
4	106-0699	1	Decal-Warning, Hot Surfaces
5	2412-72	1	Clip-Closed, Insulated
6	103-1966	1	Adapter
7	103-1965	1	Valve-Drain, Oil
8	104-8137	1	Harness-Wire
9	3296-29	4	Nut-Lock, NI
10	32128-20	2	Nut-HF
11	3255-8	1	Washer-Lock
12	237-124	1	Grommet
13	104-6373	1	Tube-Retainer
14	1-613235	4	Washer
15	1-633630	2	Grommet-Brake
16	1-633545	2	Spacer-Grommet
17	1-633543	1	Strap-Clutch/Brake
18	322-11	1	Screw-HH
19	3256-23	5	Washer-Flat
20	322-7	5	Screw-HH
22	3212-9	1	Screw-HH
23	112843	1	Washer
24	105-2635	1	Clutch/Brake
25	105-0827	1	Pulley-Drive

Ref. No.	Part No.	Qty.	Description
26	608006	1	Key-Square
27	94-5847-01	1	Cover-Pulley
28	100-6467	1	Muffler
29	100-6468	1	Clamp-Muffler
99	103-1964	1	Hose-Drain, Oil

☆ Not serviced separately





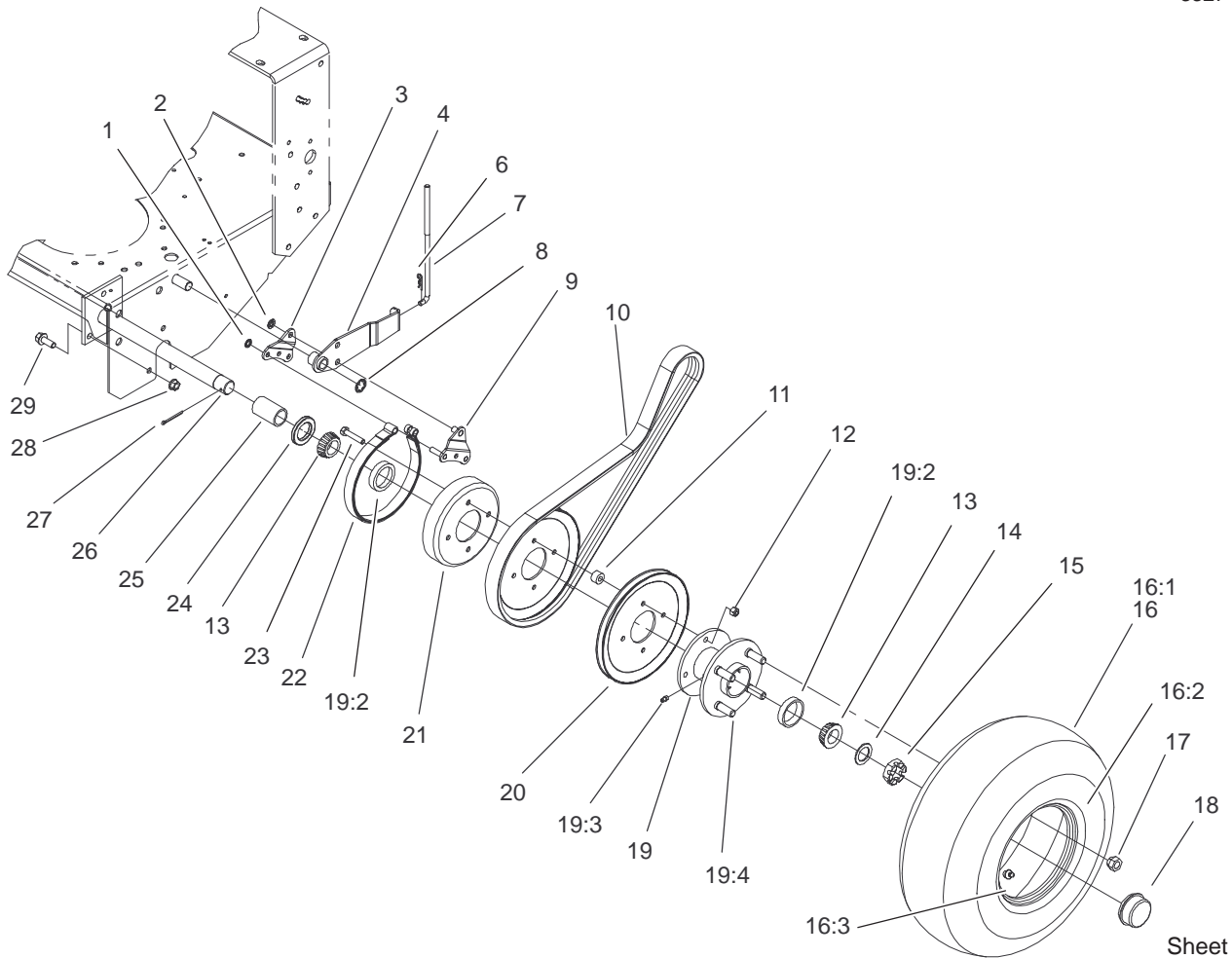


Sheet No.:7

## Transmission Drive Assembly

Ref. No.	Part No.	Qty.	Description
1	47-1970	1	Grip
2	98-3274-03	1	Lever-Shift
3	3296-6	2	Nut-Lock, NI
4	98-5975	1	Washer-Belleville
5	1-323379	1	Washer
6	1-323500	1	Transmission
7	302-5	2	Fitting-Grease
8	1-323680	2	Coupler
9	51-4220	2	Guard-Coupler
10	1-323254	2	Flange-Output
11	321-4	4	Screw-HH
12	3257-5	3	Key-Woodruff
13	3245-9	2	Screw-Set
14	32151-62	2	Ring-Retaining
15	105-2698	2	Pulley-Transmission
16	104-1102	2	Shaft-Output
17	1-323252	2	Bearing-Shaft
18	95-1529	1	Rod-Shield
19	95-1526	1	Shield-Trailing
20	105-5646	1	Pulley-Driven
21	3245-1	1	Screw-Set, HSH
22	32120-64	1	Ring-Snap, External
23	105-5668	1	V-Belt
24	68-2190	1	Spring
25	27-6230	1	Bolt-Wheel
26	323-9	1	Screw-HH

Ref. No.	Part No.	Qty.	Description
27	16-7509	1	Lever-Idler
27:1	256-155	2	Bushing-Flange
28	62-4540	1	Pulley
29	3296-39	1	Nut-Lock, NI
30	322-2	4	Screw-HH
31	3253-4	4	Washer-Lock
32	3296-42	4	Nut-Lock, NI



Sheet No.:8

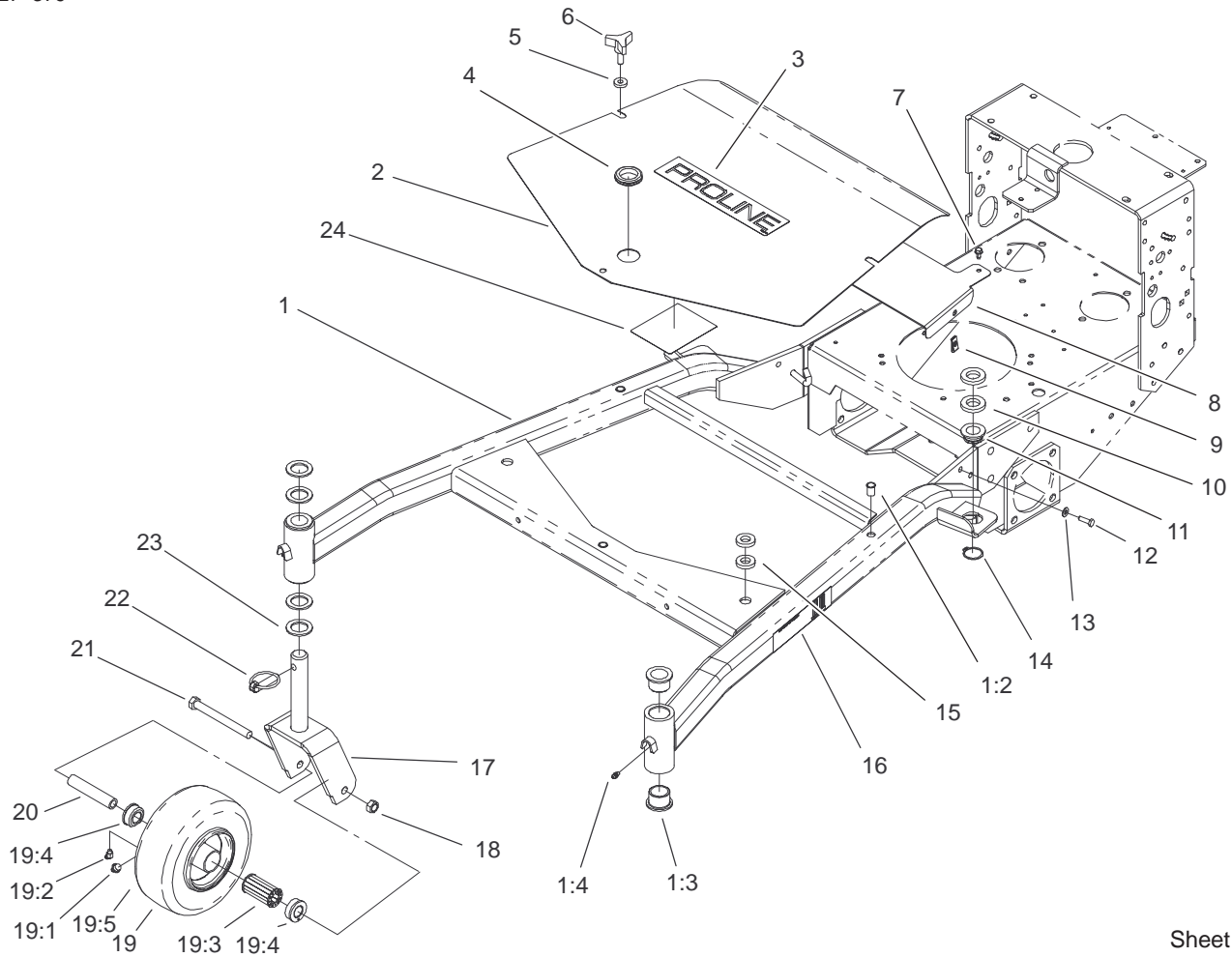
## Wheel Drive and Brake Assembly

Ref. No.	Part No.	Qty.	Description
1	32151-72	4	Ring-Retaining
2	32151-56	2	Ring-Retaining, External
3	105-4651-01	2	Plate-Link, Brake
4	106-5537-01	2	Brake Arm ASM
6	3290-307	2	Pin-Hair
7	51-4580	2	Rod-Brake
8	32151-40	2	Ring-Retaining
9	105-4652-01	2	Brake Link ASM
10	51-4290	2	V-Belt
11	51-4170	8	Spacer-Pulley
12	3296-29	8	Nut-Lock, NI
13	254-94	4	Bearing-Cone, Taper
14	1-523157	2	Washer-Spacer
15	1-809082	2	Nut-SHH
16	104-6321	2	Wheel And Tire ASM
16:1	104-6322	1	Tire
16:2	104-6323	1	Wheel
16:3	232-27	1	Stem-Valve
17	242-50	8	Nut-Lug
18	241-119	2	Cap-Dust
19	1-413333	2	Hub-Wheel ASM
19:2	254-72	2	Bearing-Cup, Tapered
19:3	302-19	1	Fitting-Grease
19:4	1-633926	4	Stud-Wheel
20	51-4160-03	4	Pulley-Wheel

Ref. No.	Part No.	Qty.	Description
21	1-323261	2	Drum-Brake
22	1-323262	2	Band-Brake
23	322-8	8	Screw-HH
24	1-543511	2	Seal-Grease
25	104-1197	2	Spacer-Wheel
26	104-1196-01	1	Axle ASM
27	1-806800	2	Pin-Cotter
28	32128-21	6	Nut-HF
29	3234-11	6	Screw-HHF





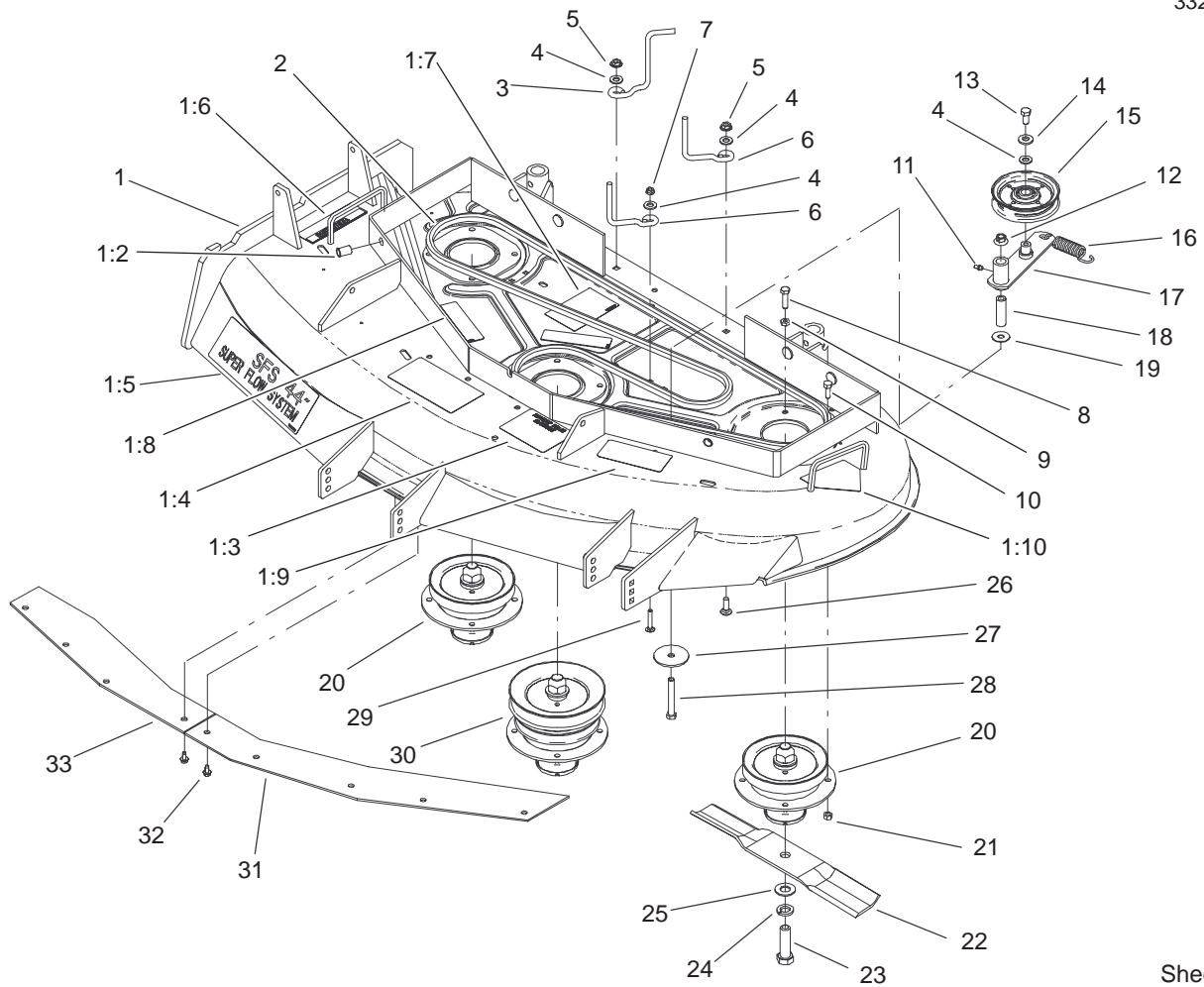


Sheet No.:2

## Carrier Frame Assembly

Ref. No.	Part No.	Qty.	Description
1	106-0707	1	Carrier Frame ASM
1:2	32148-9	3	Insert-Nut
1:3	94-1291	4	Bushing-Special
1:4	302-5	2	Fitting-Grease
2	106-0537-01	1	Cover
3	106-0719	1	Decal-Proline
4	240-3	1	Grommet-Rubber
5	106-0565	3	Washer-Rubber
6	104-8587	3	Knob
7	12-3270	2	Screw
8	105-9389-01	1	Shield-Heat
9	3290-199	2	Nut-Speed
10	104-1105	4	Spacer-Support, Deck
11	1-513336	2	Bushing-Deck
12	321-5	2	Screw-HH
13	3256-22	2	Washer-Flat
14	32120-33	2	Ring-Retaining
15	105-0842	4	Spacer
16	106-0635	2	Decal-HOC
17	105-3159-01	2	Castor Fork ASM
18	32153-5	2	Nut-Lock
19	100-6451	2	Castor Wheel ASM
19:1	232-27	1	Stem-Valve
19:2	302-11	1	Fitting-Lube, 45°
19:3	83-4740	1	Bearing
19:4	62-5580	2	Bearing-Outside

Ref. No.	Part No.	Qty.	Description
19:5	100-6452	1	Tire-Tubeless
20	100-6453	2	Bushing-Spanner
21	325-19	2	Screw-HH
22	283-71	2	Pin-Lynch
23	3-6781	8	Washer-Thrust
24	106-5505	1	Decal-Service

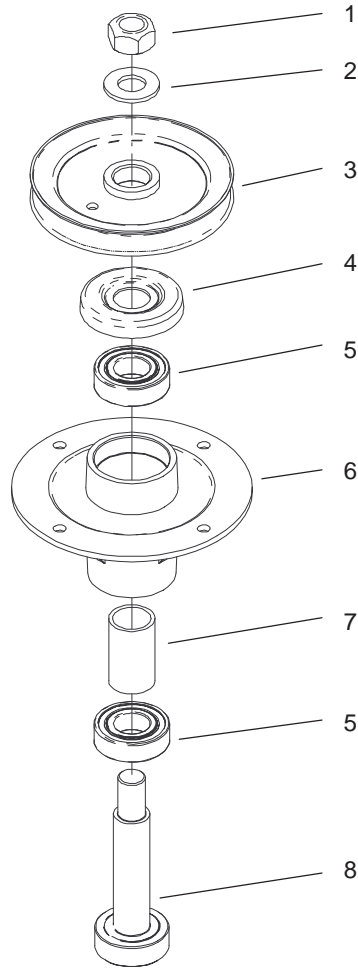


Sheet No.:3

## Spindle, Pulley and Belt Assembly

Ref. No.	Part No.	Qty.	Description
1	106-0617	1	Deck ASM
1:2	32148-10	2	Insert-Threaded
1:3	106-5532	1	Decal-Antiscalp
1:4	66-1340	1	Decal-Danger
1:5	106-0704	1	Decal-Sfs, 44"
1:6	104-8569	1	Decal-Warning
1:7	104-8186	1	Decal-Routing, Belt
1:8	67-5360	3	Decal-Danger
1:9	68-8340	1	Decal-Torque
1:10	43-8480	1	Decal-Danger
2	27-1160	1	V-Belt
3	106-5488	1	Guide-Belt
4	3256-24	4	Washer-Flat
5	32128-13	2	Nut-HF
6	52-4780	2	Rod-Belt
7	32128-10	1	Locknut-Flange
8	322-6	1	Screw-HH
9	3218-2	1	Nut-Jam
10	322-4	11	Screw-HH
11	302-19	1	Fitting-Grease
12	32128-19	1	Nut-HF
13	323-4	1	Screw-HH
14	98-5975	1	Washer-Belleville
15	65-5940	1	Pulley-Idler
16	54-2730	1	Spring-Extension
17	104-8110	1	Idler Arm ASM

Ref. No.	Part No.	Qty.	Description
18	104-8113	1	Tube-Idler
19	52-2860	1	Washer
20	106-0786	2	Spindle Housing ASM
21	32152-1	12	Nut-Lock, NI
22	54-0010	3	Blade
23	51-4060	3	Screw-Blade
24	3253-8	3	Washer-Lock
25	3256-27	3	Washer-Flat
26	3230-2	2	Bolt-CARR
27	20-9530	1	Washer-End
28	323-13	1	Screw-HH
29	3229-4	1	Screw-CARR
30	106-0784	1	Spindle Housing ASM
31	100-3258-03	1	Plate-Blowout, LH
32	12-3270	9	Screw
33	100-3257-03	1	Plate-Blowout, RH

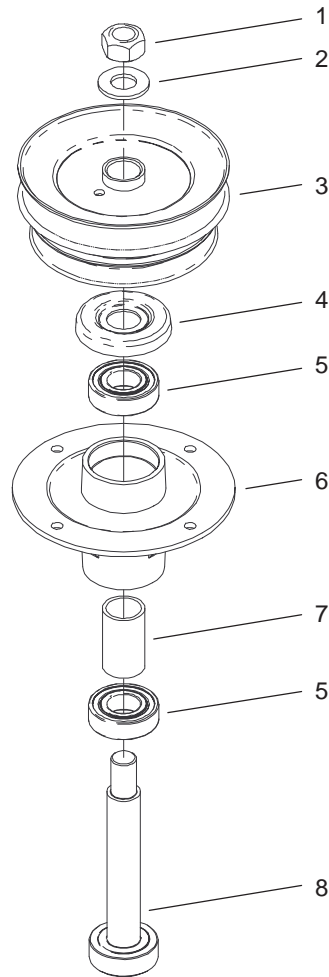


Sheet No.:A1

### Spindle Assembly No. 106-0786

Ref. No.	Part No.	Qty.	Description
1	3219-7	1	Nut-Hex
2	7-4150	1	Washer
3	104-1181	1	Pulley ASM
4	106-0873	1	Shield-Bearing
5	104-6325	2	Bearing
6	106-0818	1	Housing-Spindle
7	106-0794	1	Spacer-Bearing
8	106-0780	1	Shaft-Spindle

Ref. No.	Part No.	Qty.	Description

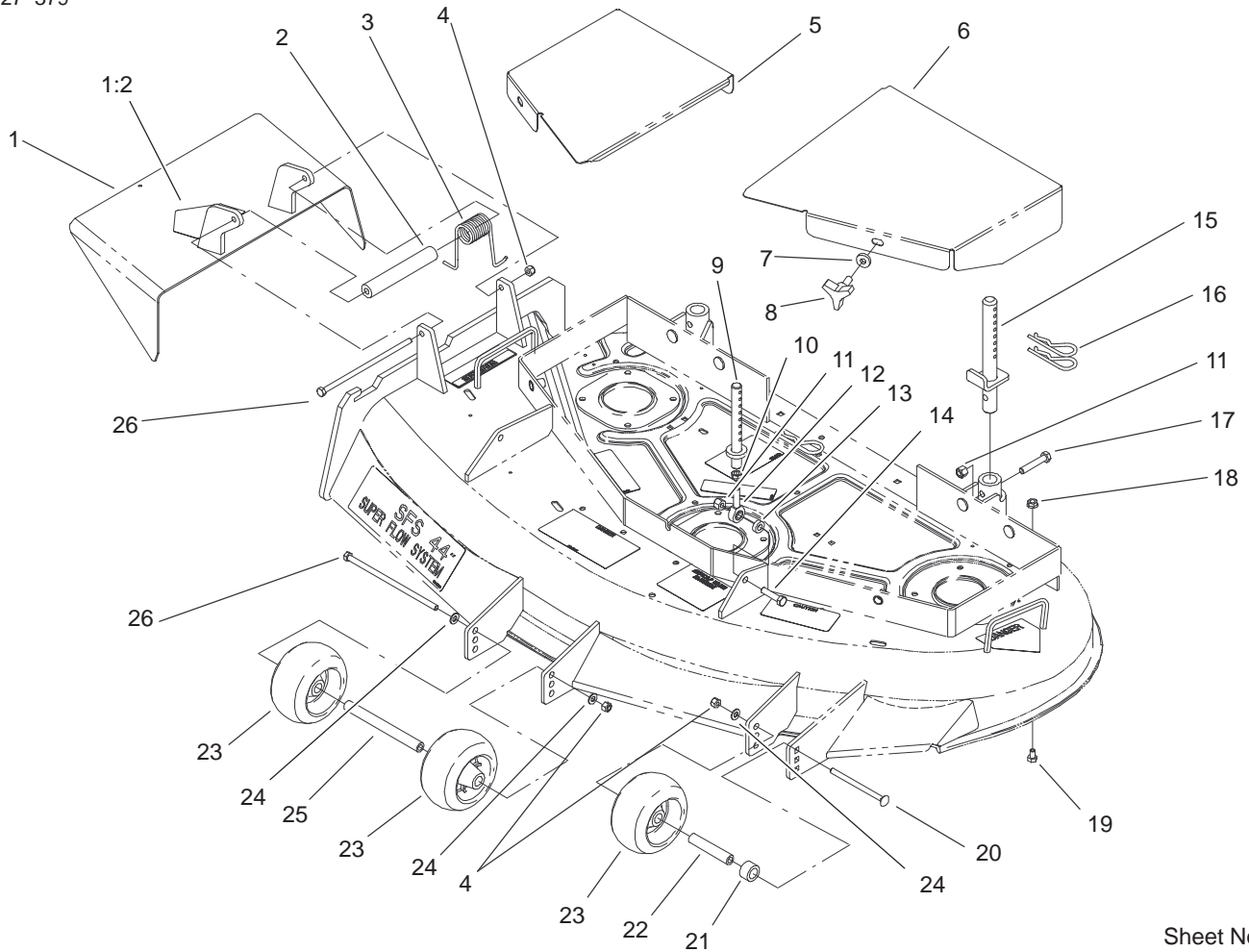


Sheet No.:A2

### Spindle Assembly No. 106-0784

Ref. No.	Part No.	Qty.	Description
1	3219-7	1	Nut-Hex
2	7-4150	1	Washer
3	104-1116	1	Pulley And Hub ASM
4	106-0873	1	Shield-Bearing
5	104-6325	2	Bearing
6	106-0818	1	Housing-Spindle
7	106-0794	1	Spacer-Bearing
8	106-0779	1	Shaft-Spindle

Ref. No.	Part No.	Qty.	Description



Sheet No.:4

## Deck Assembly

Ref. No.	Part No.	Qty.	Description
1	105-4625	1	Deflector ASM
1:2	93-1122	1	Decal-Danger
2	105-4622	1	Spacer
3	104-8554	1	Spring-Torsion
4	3296-29	3	Nut-Lock, NI
5	106-3363-01	1	Cover-Belt, RH
6	106-3362-01	1	Cover-Belt, LH
7	106-0565	2	Washer-Rubber
8	104-8587	2	Knob
9	106-0684	2	Front Pin ASM
10	3220-3	2	Nut-Jam
11	3296-39	4	Nut-Lock, NI
12	1-613204	2	Balljoint
13	104-1156	2	Spacer
14	323-8	2	Screw-HH
15	106-3365	2	Rear Pin ASM
16	3290-256	6	Pin-Hair
17	323-10	2	Screw-HH
18	32128-20	4	Nut-HF
19	322-1	4	Screw-HH
20	3230-30	1	Screw-CARR
21	106-0563	1	Spacer-Wheel
22	106-0545	1	Bushing-Roller
23	68-2730	3	Wheel-Gage
24	3256-23	3	Washer-Flat

Ref. No.	Part No.	Qty.	Description
25	98-5967	1	Spacer
26	322-50	2	Screw-HH



# Electrical Schematic

