



## Mid-Size Mower

### ProLine Pistol Grip Hydro 15hp with 36in Side-Discharge Mower

Model No. 30433-230000001 and Up

## Parts Catalog

### Ordering Replacement Parts

To order replacement parts, please supply: the part number, the quantity, and the description of each part desired.

### Understanding Reference Numbers

Each identified part in an illustration has a reference number. The reference number for a part also appears in the parts list, along with other information about the part.

This catalog uses two special reference number formats, one to indicate parts in a service assembly and another to indicate the quantity of a given part in an illustration.

### Service Assembly Reference Numbers

Parts in service assemblies have reference numbers in the form **a:b**. The **a** represents the reference number of the entire service assembly and the **b** represents a sequential number unique to each part within the service assembly.

For example, a wheel assembly might be identified by reference number **6**, the tire by **6:1**, the valve by **6:2**, and the wheel by **6:3**. When you order the assembly identified by reference number **6**, you receive all parts identified by reference numbers **6:1**, **6:2**, and **6:3**. However, you may also order any part individually.

Reference numbers of this type appear in illustrations and in part lists.

### Reference Numbers Indicating Quantity

In an illustration, if a reference number indicates more than one part, the reference number has the form **nX y**. The **n** represents the quantity of the part, the **X** is the multiplication symbol, and the **y** represents the reference number.

For example, in an illustration, the reference number **2X 37** means that two of the parts identified by reference number **37** are indicated.

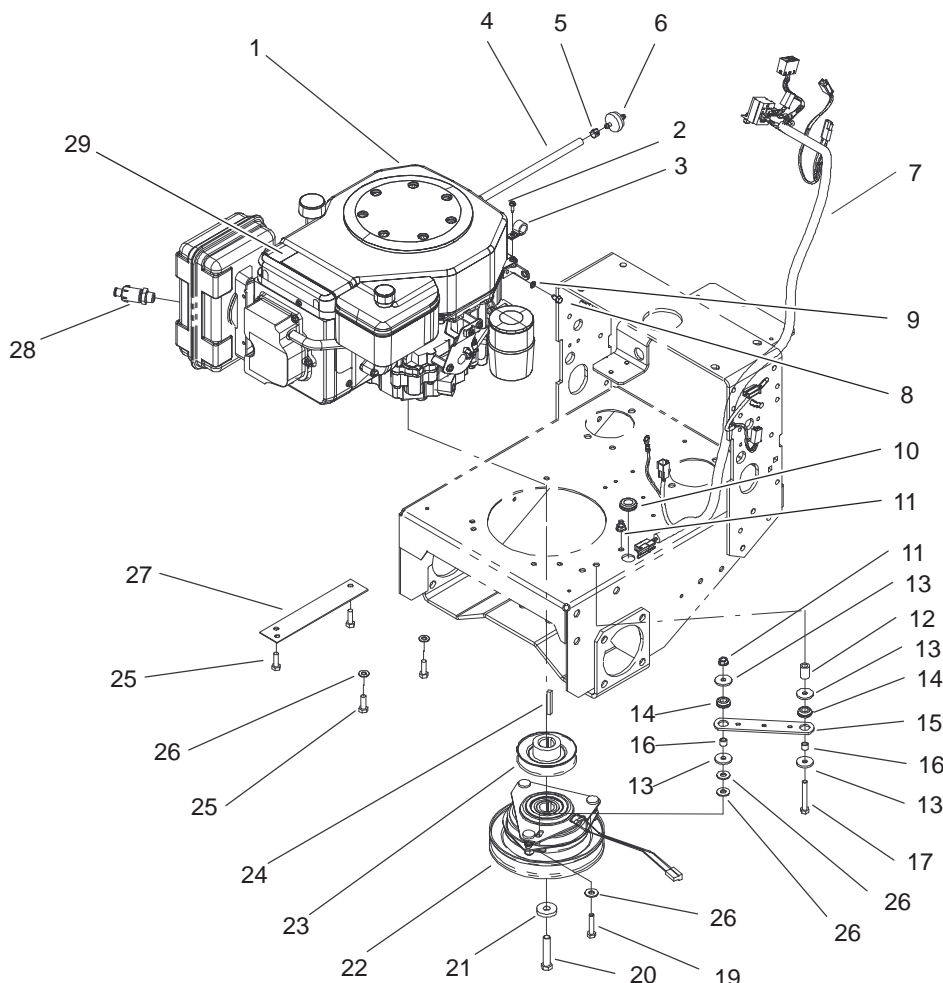
## Contents

Description	Page	Description	Page
Engine Installation Assembly .....	3	Oil Pan and Lubrication Assembly	
Fuel Tank Assembly .....	4	Kohler Model CV15T-41604 .....	21
Hydraulic Pump Assembly No. 106-5490 .....	5	Cylinder Head, Valves And Breather Assembly	
Hydraulic Pump Assembly No. 106-5489 .....	6	Kohler Model CV15T-41604 .....	22
Wheel Motor, Pump Belt and		Ignition and Electrical Assembly	
Pump Idler Assembly .....	7	Kohler Model CV15T-41604 .....	23
Lower Control Assembly .....	8	Blower Housing And Baffles Assembly	
Hydraulic Hose Assembly .....	9	Kohler Model CV15T-41604 .....	24
Upper Control Assembly .....	10	Starter Assembly	
Control Panel Assembly .....	11	Kohler Model CV15T-41604 .....	25
Parking Brake Assembly .....	12	Fuel System Assembly	
Electrical Schematic .....	13	Kohler Model CV15T-41604 .....	26
Carrier Frame Assembly .....	14	Engine Controls Assembly	
Spindle, Pulley and Belt Assembly .....	15	Kohler Model CV15T-41604 .....	27
Spindle Assembly No. 106-0785 .....	16	Air Cleaner Assembly	
Spindle Assembly No. 106-0787 .....	17	Kohler Model CV15T-41604 .....	28
Deck Assembly .....	18	Exhaust Assembly	
Drive Belt and Tensioner Assembly .....	19	Kohler Model CV15T-41604 .....	29
Crankcase Assembly			
Kohler Model CV15T-41604 .....	20		

## Part Description Abbreviations

Part descriptions in this catalog may include the following abbreviations.

Abbreviation	Meaning	Abbreviation	Meaning
AR .....	as required	HYD .....	hydraulic
ASM .....	assembly	INC .....	incorporated
CARR .....	carriage	LH .....	left hand
DEG .....	degrees	NI .....	nylon insert
FH .....	flat head	PPH .....	Phillips pan head
GA .....	gauge	PTH .....	Phillips truss head
HF .....	hex flange	PTO .....	power take off
HH .....	hex head	RH .....	right hand
HHF .....	hex head flange	SFH .....	slotted fillister head
HLH .....	hex lag head	SHH .....	slotted hex head
HJ .....	hex jam	SQH .....	square head
HOC .....	height-of-cut	SHWH .....	slotted hex washer head
HS .....	hex socket	SPH .....	slotted pan head
HSBH .....	hex socket button head	SRH .....	slotted round head
HSFH .....	hex socket flat head	STD .....	standard
HSH .....	hex socket head	TAP .....	self tapping
HWH .....	hex washer head	TTH .....	Torx truss head
HWHTF .....	hex washer head thread forming	WH .....	wing head



Sheet No.: 2

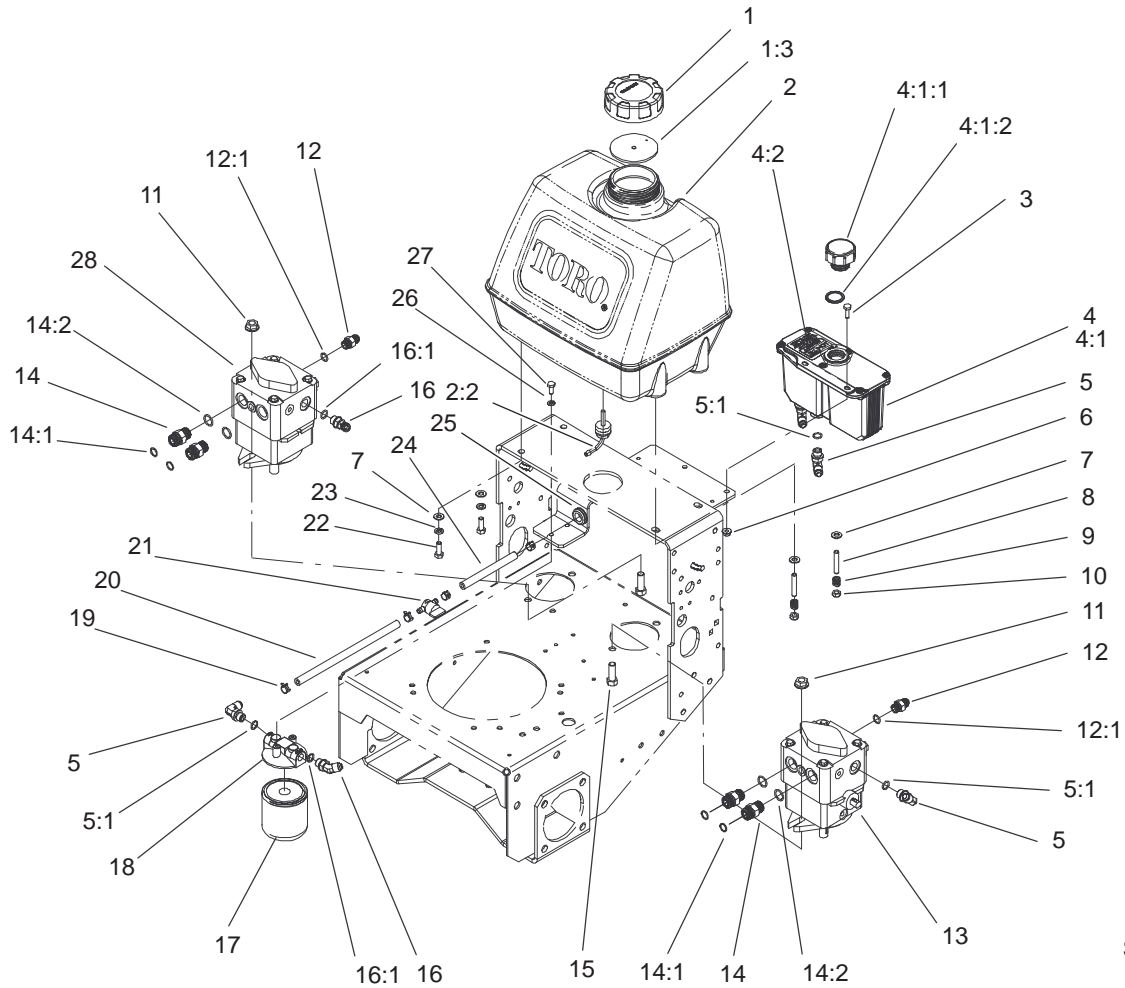
## Engine Installation Assembly

Ref. No.	Part No.	Qty.	Description
☆1		1	Engine-Kohler, Cv15t-41604
2	32144-19	1	Screw-Forming, Thread
3	2412-87	1	Clamp-Cable
4	47-2982	1	Hose-Fuel
5	2412-98	2	Clamp
6	56-6360	1	Filter-Fuel
7	106-0727	1	Harness-Wire
8	12-3270	1	Screw
9	3255-7	1	Washer-Lock/Ext
10	237-124	1	Grommet
11	32128-20	2	Nut-HF
12	104-6373	1	Tube-Retainer
13	1-613235	4	Washer
14	1-633630	2	Grommet-Brake
15	1-633543	1	Strap-Clutch/Brake
16	1-633545	2	Spacer-Grommet
17	322-11	1	Screw-HH
19	322-7	1	Screw-HH
20	3212-9	1	Screw-HH
21	112843	1	Washer
22	105-2635	1	Clutch/Brake
23	44-5940	1	Pulley
24	608006	1	Key-Square
25	33114-025	4	Screw-HH

Ref. No.	Part No.	Qty.	Description
26	3256-23	5	Washer-Flat
27	94-5847-01	1	Cover-Pulley
28	92-6877	1	Valve-Drain, Oil
29	106-0699	1	Decal-Warning, Hot Surfaces
*99	103-1964	1	Hose-Drain, Oil

☆ Not serviced separately

\* Not illustrated



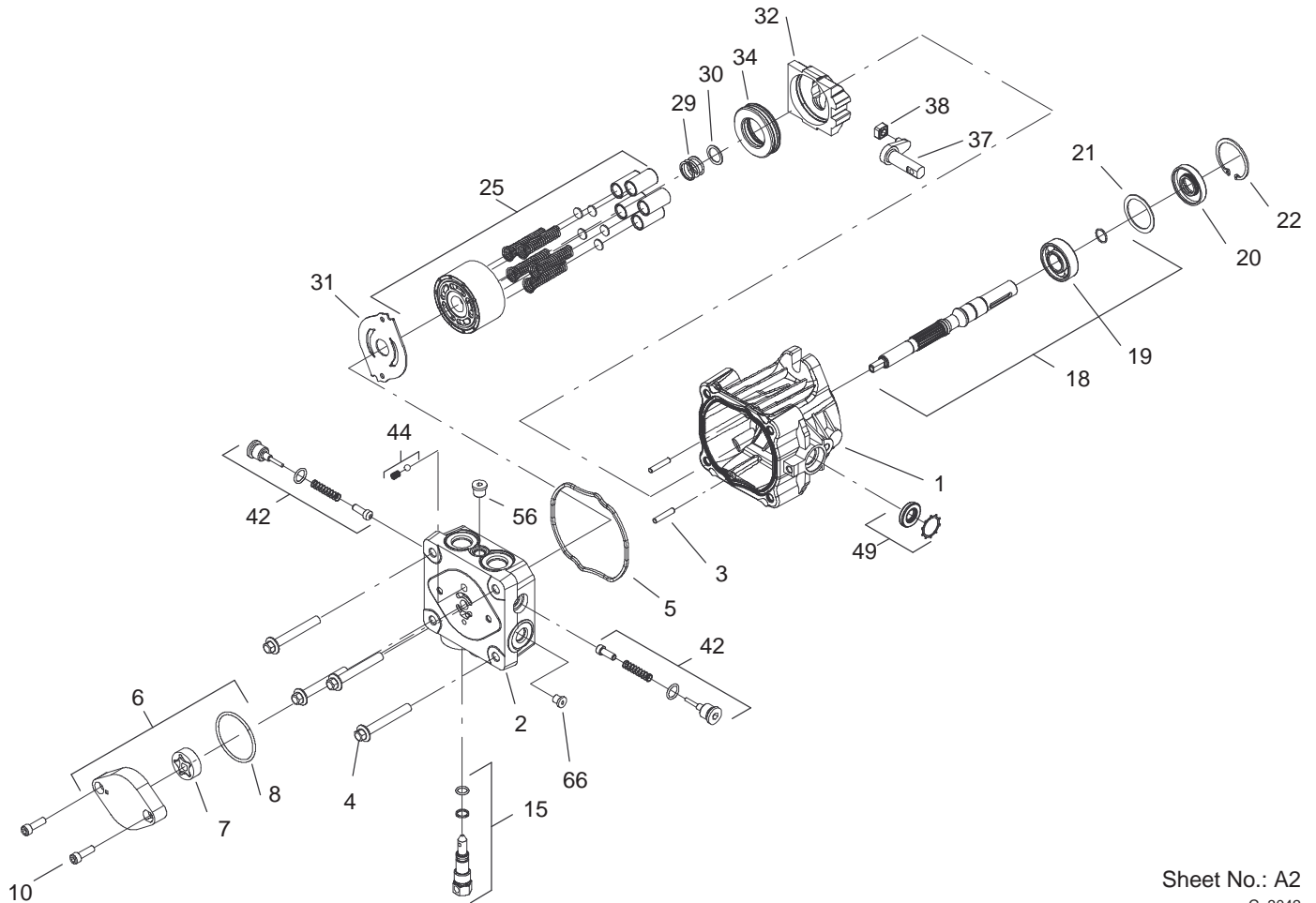
Sheet No.: 4

## Fuel Tank Assembly

Ref. No.	Part No.	Qty.	Description
1	88-3980	1	Gas Cap ASM
1:3	88-4010	1	Gasket-Cap, Gas
2	106-0730	1	Fuel Tank ASM
2:2	103-2605	1	Fitting-Fuel, Bulkhead
3	321-4	2	Screw-HH
4	103-1947	1	HYD Reservoir ASM
☆4:1		1	Reservoir-HYD
4:1:1	103-1948	1	Cap-Reservoir, HYD
4:1:2	103-1949	1	Gasket-Cap, HYD
4:2	1-523552	1	Decal-Tank, HYD
5	353-374	4	Elbow-90°
5:1	237-42	1	O-Ring
6	32128-33	2	Nut-HF
7	3256-23	4	Washer-Flat
8	104-8121	2	Stud-Threaded
9	1-633349	2	Spring-Tank, Fuel
10	3296-47	2	Nut-Lock, NI
11	32128-42	4	Nut-HF
12	353-384	2	Fitting-Straight
12:1	237-42	1	O-Ring
13	106-5490	1	Pump-Hydraulic
14	340-4	4	Adapter
14:1	237-30	1	O-Ring
14:2	237-79	1	O-Ring
15	324-5	4	Screw-HH
16	353-212	2	Elbow

Ref. No.	Part No.	Qty.	Description
16:1	237-42	1	O-Ring
17	1-633750	1	Filter-HYD
17	1-633752	1	Filter-HYD, Winter
18	104-7836	1	Head-Filter
19	2412-98	4	Clamp
20	47-2982	1	Hose-Fuel
21	1-603770	1	Valve-Fuel
22	322-4	2	Screw-HH
23	3253-4	2	Washer-Lock
24	47-2966	1	Hose-Fuel
25	237-124	1	Grommet
26	3253-3	2	Washer-Lock
27	321-3	2	Screw-HH
28	106-5489	1	Pump-Hydraulic

☆ Not serviced separately



Sheet No.: A2

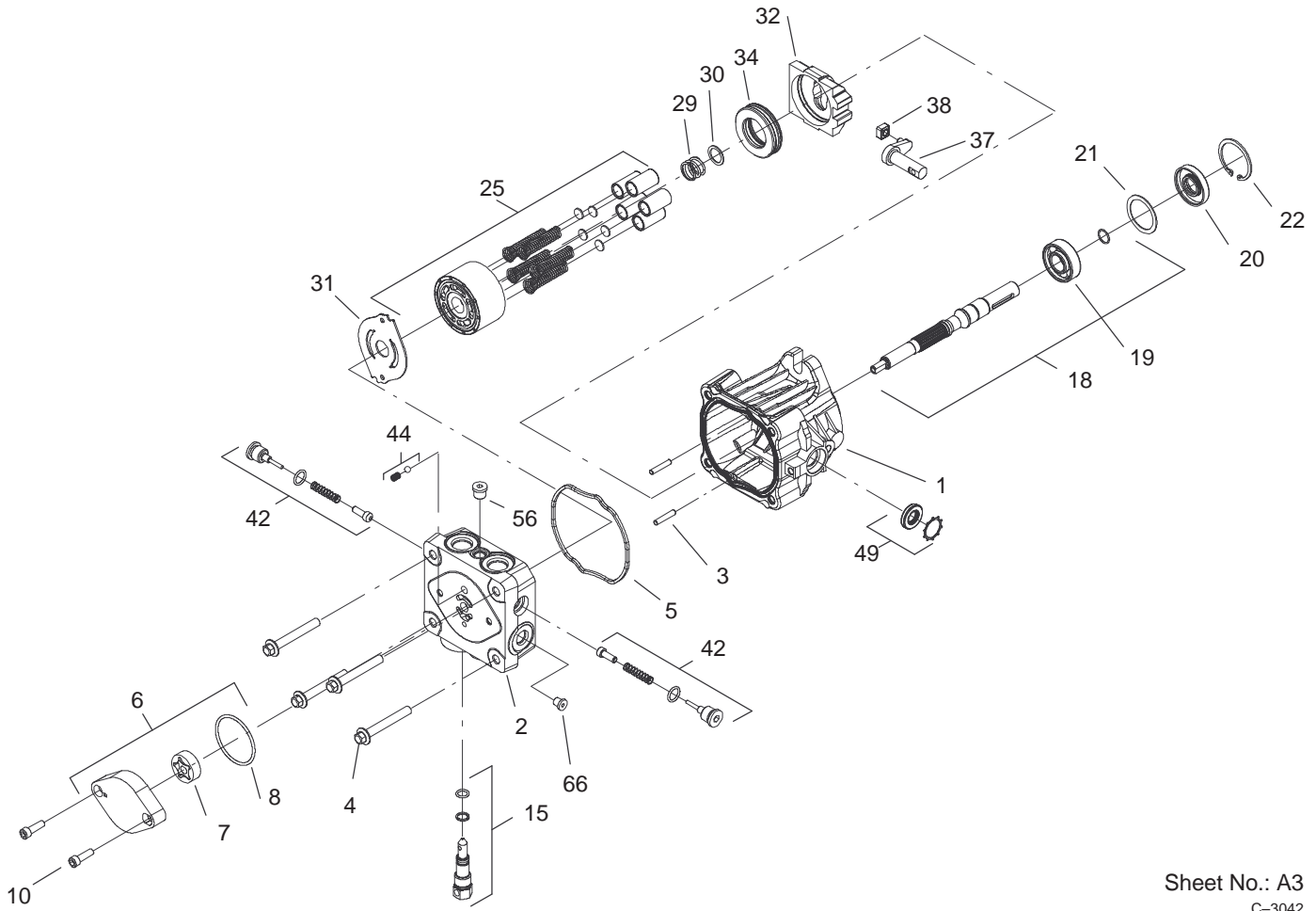
C-3042

## Hydraulic Pump Assembly No. 106-5490

Ref. No.	Part No.	Qty.	Description
1	106-8751	1	Housing Kit
2	106-8752	1	End Cap Kit W/Poppets
3	106-8753	2	Pin-Headless, Straight
4	106-8754	4	Bolt-HF
5	106-8755	1	O Ring-Housing
6	106-8756	1	Charge Pump Kit
7	104-2122	1	Gerotor ASM
8	106-8757	1	O-Ring
10	106-8758	2	Screw-HSH
15	106-8759	1	Bypass Valve Kit
18	103-2664	1	Input Shaft Kit
19	104-5311	1	Bearing-Ball
20	104-5310	1	Seal-Lip
21	104-5308	1	Spacer
22	104-5309	1	Ring-Retaining
25	104-2106	1	Cylinder Block ASM
29	94-1936	1	Spring-Block
30	94-1937	1	Washer-Block, Thrust
31	105-6185	1	Plate-Valve
32	94-1907	1	Swashplate-Variable
34	94-6922	1	Bearing-Thrust
37	94-1909	1	Arm-Trunion
38	94-1910	1	Guide-Slot
42	98-3252	2	Valves-Check W/Poppet

Ref. No.	Part No.	Qty.	Description
44	106-8760	1	Charge Relief Valve Kit
49	106-8761	1	Trunion Seal/Retainer Kit
56	106-8762	1	Plug-HSH
66	106-8763	1	Plug-HSH
*99	105-6184	1	Seal Overhaul Kit

\* Not illustrated



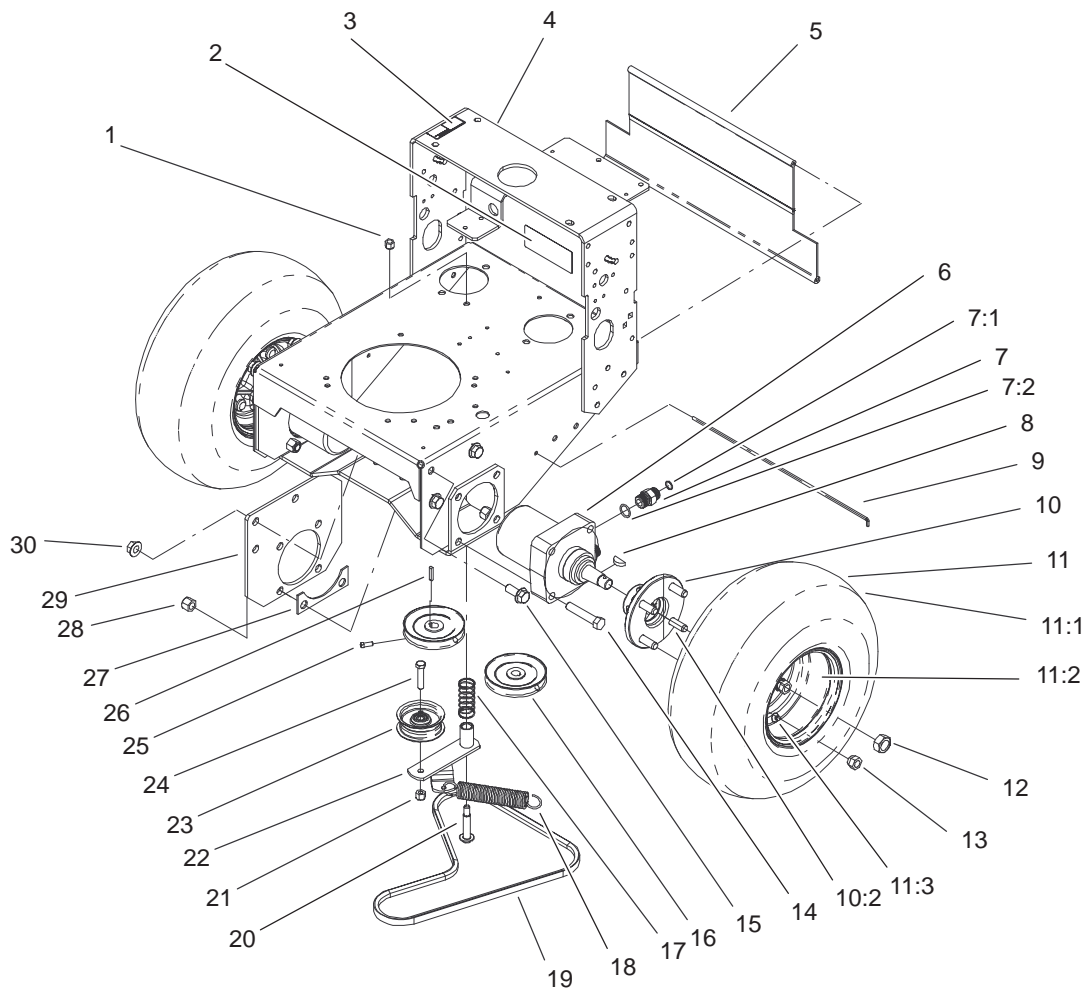
Sheet No.: A3  
C-3042

## Hydraulic Pump Assembly No. 106-5489

Ref. No.	Part No.	Qty.	Description
1	106-8751	1	Housing Kit
2	106-8752	1	End Cap Kit
3	106-8753	2	Pin-Headless, Straight
4	106-8754	4	Bolt-HF
5	106-8755	1	O Ring-Housing
6	106-8756	1	Charge Pump Kit
7	104-2122	1	Gerotor ASM
8	106-8757	1	O-Ring
10	106-8758	2	Screw-HSH
15	106-8759	1	Bypass Valve Kit
18	103-2664	1	Input Shaft Kit
19	104-5311	1	Bearing-Ball
20	104-5310	1	Seal-Lip
21	104-5308	1	Spacer
22	104-5309	1	Ring-Retaining
25	104-2106	1	Cylinder Block ASM
29	94-1936	1	Spring-Block
30	94-1937	1	Washer-Block, Thrust
31	105-6185	1	Plate-Valve
32	94-1907	1	Swashplate-Variable
34	94-6922	1	Bearing-Thrust
37	94-1909	1	Arm-Trunion
38	94-1910	1	Guide-Slot
42	98-3252	2	Valves-Check W/Poppet

Ref. No.	Part No.	Qty.	Description
44	106-8760	1	Charge Relief Valve Kit
49	106-8761	1	Trunion Seal/Retainer Kit
56	106-8762	1	Plug-HSH
66	106-8763	1	Plug-HSH
*99	105-6184	1	Seal Overhaul Kit

\* Not illustrated

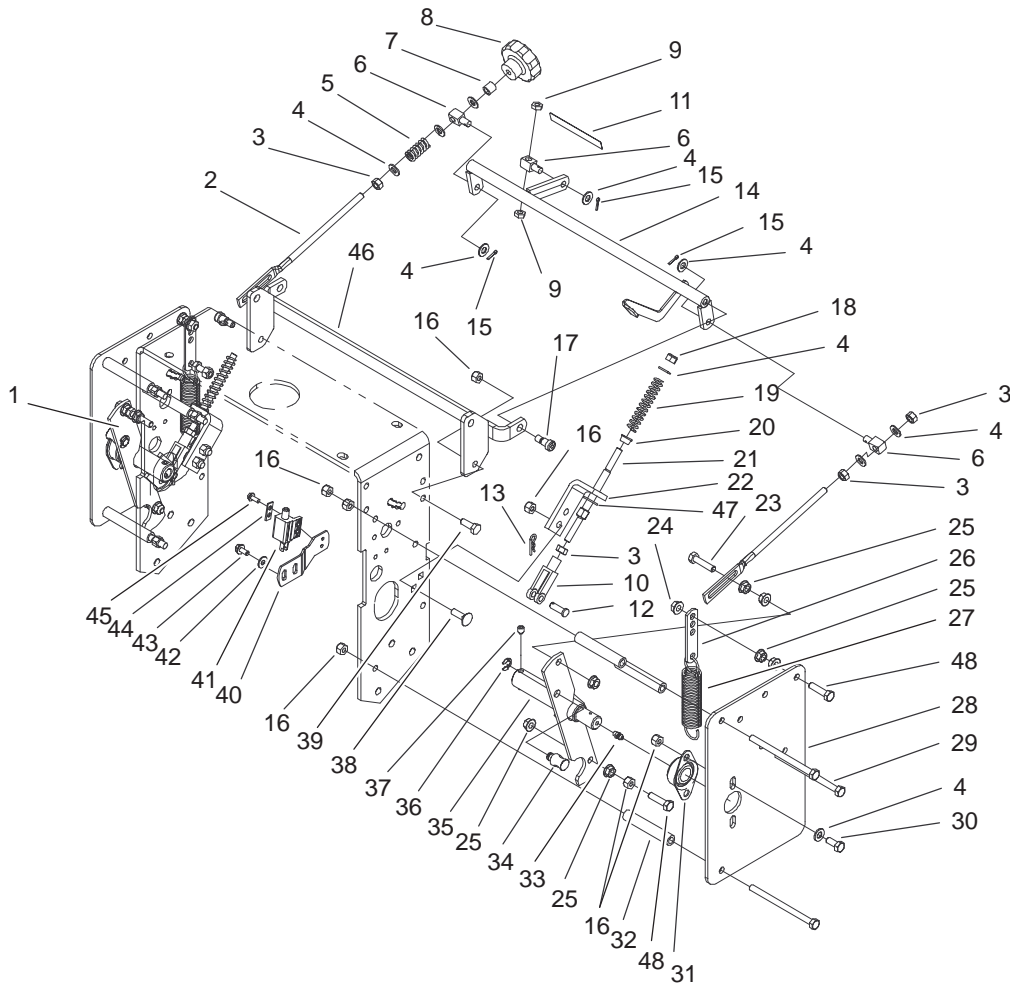


Sheet No.: 5

## Wheel Motor, Pump Belt and Pump Idler Assembly

Ref. No.	Part No.	Qty.	Description
1	3296-6	1	Nut-Lock, NI
2	98-0776	1	Decal-Caution
3	95-2814	1	Decal-Shut Off, Fuel
4	106-0548-01	1	Hydro Frame ASM
5	95-1526	1	Shield-Trailing
6	104-1171	2	Motor-Wheel
7	340-6	4	Fitting-HYD, Straight
7:1	237-30	1	O-Ring
7:2	237-80	1	O-Ring
8	3257-8	2	Key-Woodruff
9	95-1529	1	Rod-Shield
10	105-0800	2	Wheel Hub/Stud ASM
10:2	10-6830	4	Stud-Type, Drive
11	104-6321	2	Wheel And Tire ASM
11:1	104-6322	1	Tire
11:2	104-6323	1	Wheel
11:3	232-27	1	Stem-Valve
12	85-7310	2	Nut-Motor, Wheel
13	242-50	8	Nut-Lug
14	325-11	8	Screw-HH
15	3234-32	6	Screw-HHF
16	105-5648	2	Pulley-Pump
17	88-1880	1	Spring-Compression
18	68-2190	1	Spring
19	105-5649	1	V-Belt
20	27-6230	1	Bolt-Wheel

Ref. No.	Part No.	Qty.	Description
21	3296-39	1	Nut-Lock, NI
22	86-4770	1	Idler Lever ASM
23	62-4540	1	Pulley
24	323-9	1	Screw-HH
25	3241-5	4	Screw-Set
26	80-6090	2	Key-Pump
27	86-4740-01	2	Spacer-Frame
28	3296-23	8	Nut-Lock, NI
29	105-5643-01	2	Plate-Frame
30	32128-23	6	Nut-HF



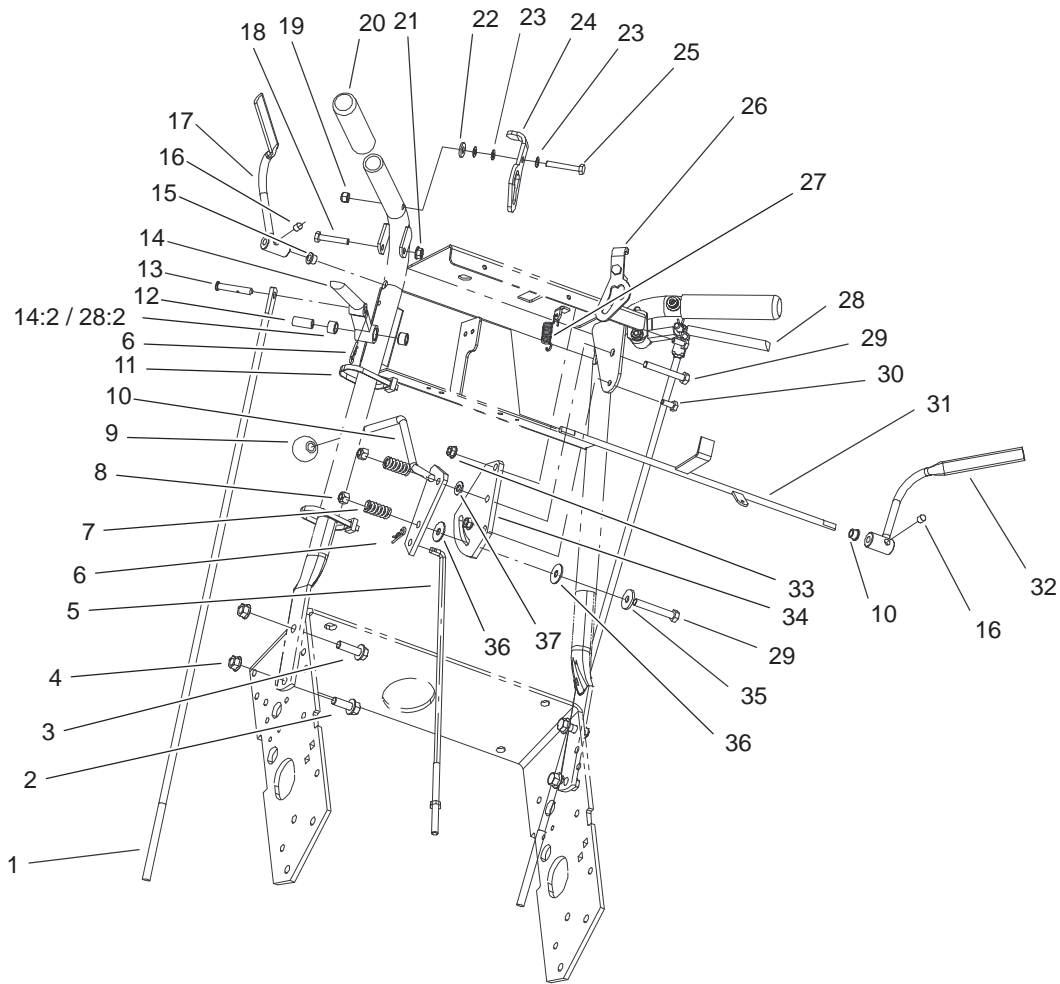
Sheet No.: 6

## Lower Control Assembly

Ref. No.	Part No.	Qty.	Description
1	106-5484	1	RH Control Arm ASM
2	1-413350	2	Link-Control, Speed
3	3219-2	5	Nut-Hex
4	3256-23	14	Washer-Flat
5	1-323245	1	Spring-Compression
6	1-603676	3	Swivel-Adjustable, Short
7	1-603903	1	Spacer
8	1-413151	1	Knob-Tracking
9	3220-2	2	Nut
10	1-303105	2	Yoke-Adjustable
11	105-4109	1	Decal-Tracking
12	1-808280	2	Pin-Clevis
13	3290-307	2	Pin-Hair
14	106-5538-01	1	Speed Control Crank ASM
15	3272-5	3	Pin-Cotter
16	3296-29	18	Nut-Lock, NI
17	1-809056	2	Screw
18	3296-4	2	Nut-Lock, NI
19	1-603807	2	Spring-Return, Neutral
20	1-603735	2	Bushing-Flanged
21	105-9372	2	Stud-Adjustment
22	104-9802-01	2	Bracket-Mount, Spring
23	1-403180	2	Screw-HH

Ref. No.	Part No.	Qty.	Description
24	32128-25	2	Nut-Flange
25	32128-20	14	Nut-HF
26	1-613089	2	Tab-Spring, Extension
27	1-603693	2	Spring-Extension
28	104-9817-01	2	Plate-Side, Hydro
29	322-38	6	Screw-HH
30	322-3	4	Screw-HH
31	1-633102	2	Bearing-Flange, Side
32	104-9820	6	Spacer-Shield
33	302-5	2	Fitting-Grease
34	103-1235	2	Swivel-Lever, Drive
35	106-5480	1	LH Control Arm ASM
36	32151-47	2	Ring-Retaining
37	3246-3	4	Screw-HS
38	3230-2	4	Bolt-CARR
39	322-4	2	Screw-HH
40	106-5539-01	1	Bracket-Neutral
41	95-1653	1	Switch-Pole, Single
42	3256-1	2	Washer-Flat
43	32144-4	2	Screw-HWH
44	82-4570	1	Plate-Switch
45	32144-1	2	Screw-Tapite
46	105-3163-01	1	Crank Support ASM
47	3256-24	2	Washer-Flat
48	322-6	4	Screw-HH



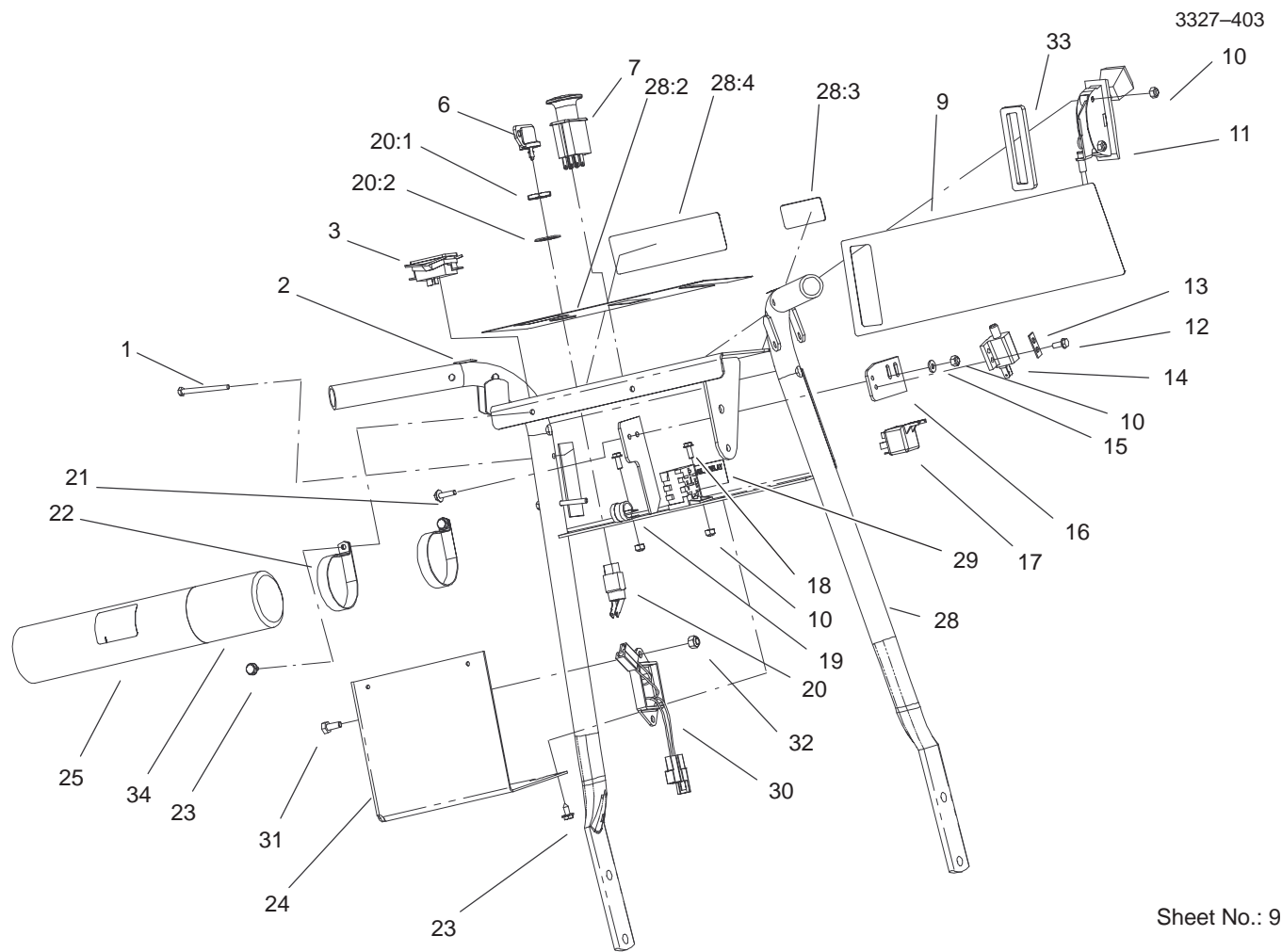


Sheet No.: 8

## Upper Control Assembly

Ref. No.	Part No.	Qty.	Description
1	1-413219	2	Rod-Lever, Drive
2	3234-11	2	Screw-HHF
3	3234-24	2	Screw-HHF
4	32128-21	4	Nut-HF
5	106-5534	1	Rod-Speed Control
6	3290-307	3	Pin-Hair
7	1-323245	2	Spring-Compression
8	3296-29	2	Nut-Lock, NI
9	233-42	1	Knob
10	106-2748	1	Lever-Shift
11	3290-378	3	Tie-Cable
12	1-603749	2	Bushing-Lever, Drive
13	1-613055	2	Pin-Clevis
14	103-0218	1	LH Drive Lever ASM
14:2	1-413152	2	Sleeve-Bushing
15	1-303365	2	Bushing-Nylon
16	1-803322	2	Screw-Set
17	106-5485	1	LH Opc Lever ASM
18	321-9	2	Screw-HH
19	3296-42	2	Nut-Lock, NI
20	104-9838	2	Grip-Foam
21	32128-33	2	Nut-HF
22	3256-2	2	Washer-Flat
23	1-303435	6	Washer-Spring
24	106-5483	1	Latch-Thumb, LH
25	321-10	2	Screw-HH

Ref. No.	Part No.	Qty.	Description
26	106-5481	1	Latch-Thumb, RH
27	1-303363	1	Spring-Extension
28	103-0219	1	RH Drive Lever ASM
28:2	1-413152	2	Sleeve-Bushing
29	322-11	2	Screw-HH
30	321-3	2	Screw-HH
31	104-9803	1	Rod ASM
32	106-5486	1	RH Opc Lever ASM
33	32128-33	2	Nut-HF
34	1-603730	1	Plate-Lever, Shifter
35	1-603716	1	Washer-Friction
36	1-323244	2	Washer-Friction
37	3256-23	1	Washer-Flat



Sheet No.: 9

## Control Panel Assembly

Ref. No.	Part No.	Qty.	Description
1	32105-14	2	Screw
2	105-4110	2	Decal-Lock, Neutral
3	104-8143	1	Hourmeter
6	63-8360	1	Key-Ignition
7	95-7489	1	Switch-PTO
9	106-5501	1	Decal-Control, Throttle
10	3296-2	6	Nut-Lock
11	105-4114	1	Control-Throttle
12	32144-1	2	Screw-Taptite
13	82-4570	1	Plate-Switch
14	95-1653	1	Switch-Pole, Single
15	3256-14	2	Washer-Flat
16	105-4137-03	1	Plate-Mounting, Switch
17	105-4145	1	Relay-Speedometer
18	3290-321	2	Screw-HWH
19	2412-134	1	R-Clamp
20	29-5560	1	Switch-On/Off
20:1	218-461	1	Nut-HH
20:2	3254-5	1	Washer-Tooth
21	32105-13	2	Screw-SHH
22	2412-120	2	R-Clamp
23	32104-76	4	Screw
24	105-4112-03	1	Bracket-Cover
25	104-7050	1	Housing-Manual

Ref. No.	Part No.	Qty.	Description
28	105-3175	1	Handle ASM
28:2	106-5515	1	Decal-Panel, Control
28:3	98-4387	1	Decal-Protection, Ear
28:4	82-4590	1	Decal-Warning
29	105-4146	1	Decal-Relay, 24 Volt
30	105-4608	1	Module-Filter
31	321-3	2	Screw-HH
32	3296-42	2	Nut-Lock, NI
34	104-7048	1	Cap-Housing

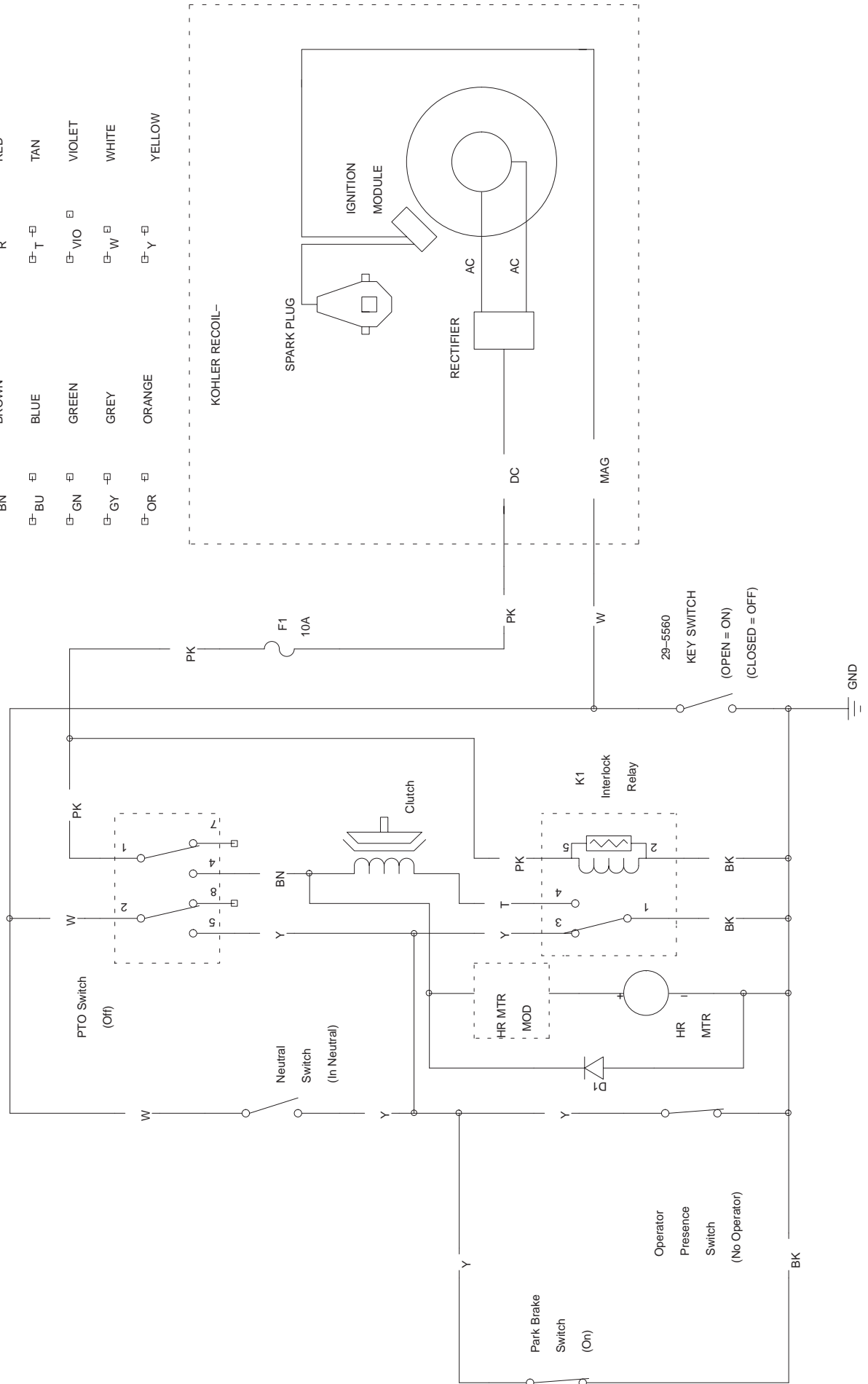


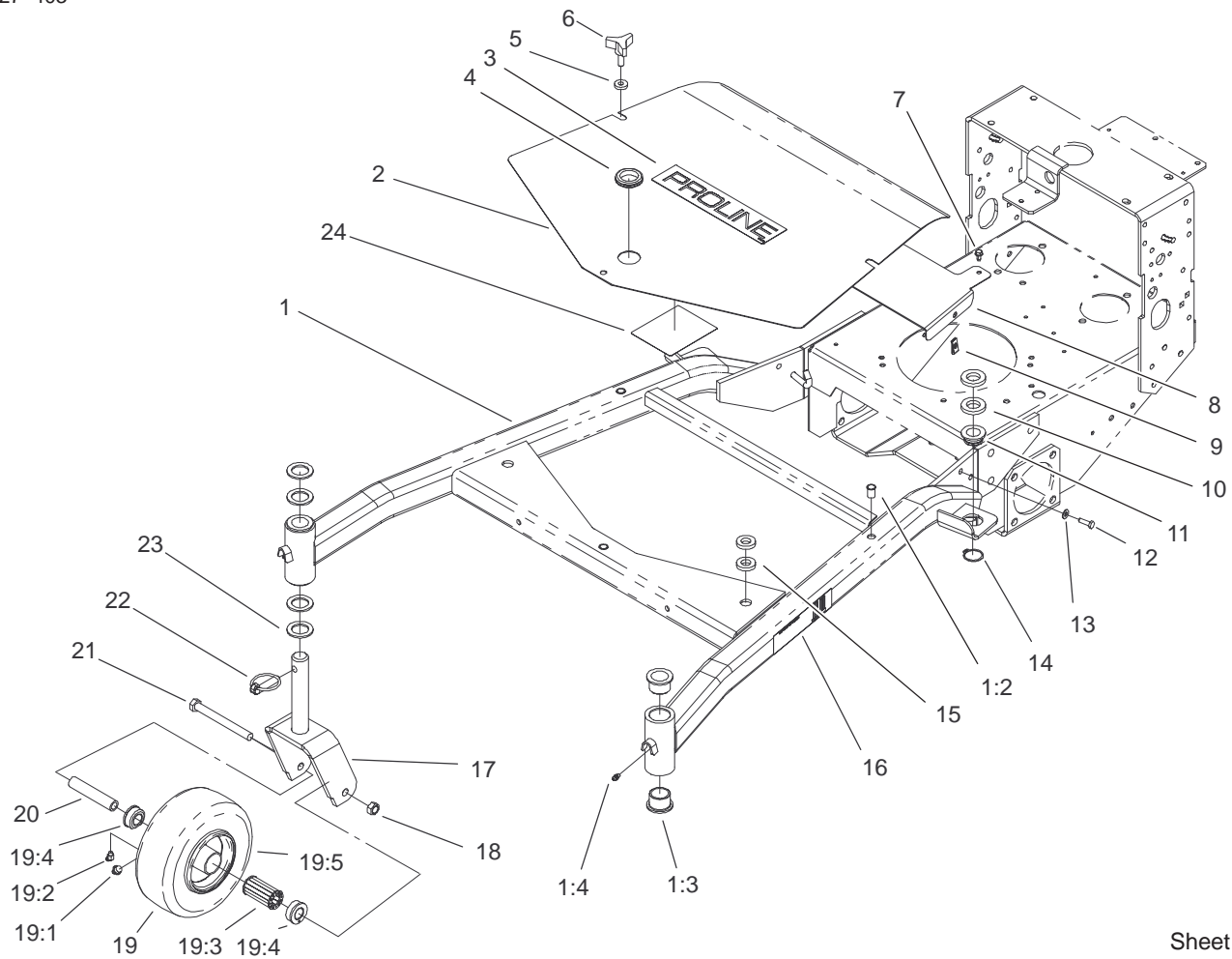
# Electrical Schematic

WIRE COLOR CODES

⊖ BK	⊖ BK	⊖ PK	⊖ PINK
⊖ BN	⊖ BROWN	⊖ R	⊖ RED
⊖ BU	⊖ BLUE	⊖ T	⊖ TAN
⊖ GN	⊖ GREEN	⊖ VIO	⊖ VIOLET
⊖ GY	⊖ GREY	⊖ W	⊖ WHITE
⊖ OR	⊖ ORANGE	⊖ Y	⊖ YELLOW

Pistol Grip M.S. Hydro Kohler



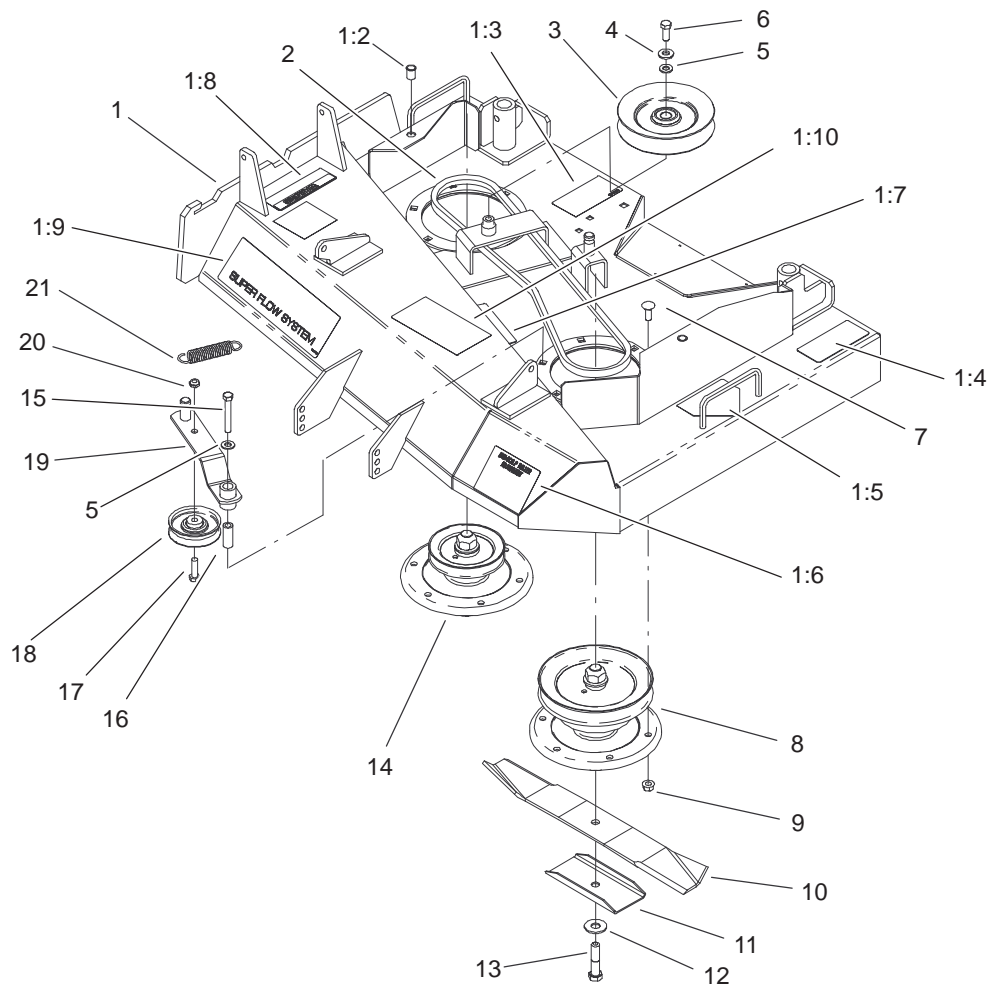


Sheet No.:2

## Carrier Frame Assembly

Ref. No.	Part No.	Qty.	Description
1	106-0706	1	Carrier Frame ASM
1:2	32148-9	3	Insert-Nut
1:3	94-1291	4	Bushing-Special
1:4	302-5	2	Fitting-Grease
2	105-3165-01	1	Cover-Frame, Carrier
3	106-0719	1	Decal-Proline
4	240-3	1	Grommet-Rubber
5	106-0565	3	Washer-Rubber
6	104-8587	3	Knob
7	12-3270	2	Screw
8	106-5473-01	1	Shield-Heat
9	3290-199	2	Nut-Speed
10	104-1105	4	Spacer-Support, Deck
11	1-513336	2	Bushing-Deck
12	321-5	2	Screw-HH
13	3256-22	2	Washer-Flat
14	32120-33	2	Ring-Retaining
15	105-0842	4	Spacer
16	106-0635	2	Decal-HOC
17	105-3159-01	2	Castor Fork ASM
18	32153-5	2	Nut-Lock
19	100-6451	2	Castor Wheel ASM
19:1	232-27	1	Stem-Valve
19:2	302-11	1	Fitting-Lube, 45°
19:3	83-4740	1	Bearing
19:4	62-5580	2	Bearing-Outside

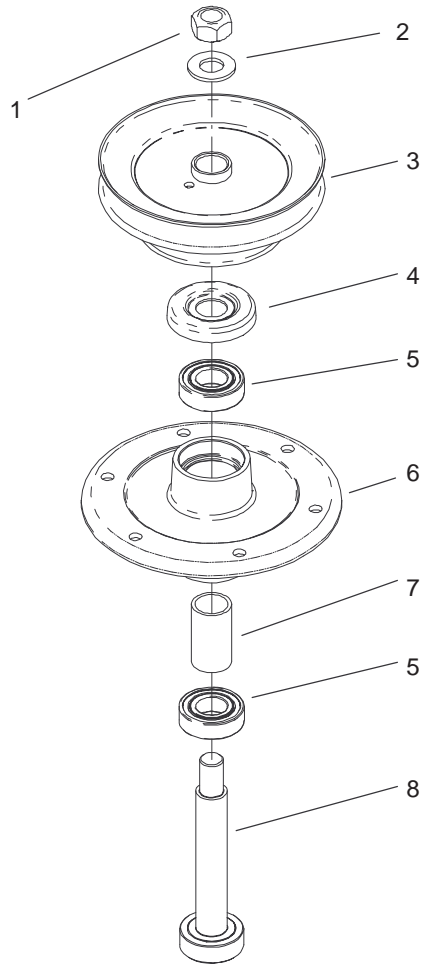
Ref. No.	Part No.	Qty.	Description
19:5	100-6452	1	Tire-Tubeless
20	100-6453	2	Bushing-Spanner
21	325-19	2	Screw-HH
22	283-71	2	Pin-Lynch
23	3-6781	8	Washer-Thrust
24	106-5506	1	Decal-Service, Gear Tb



Sheet No.:3

## Spindle, Pulley and Belt Assembly

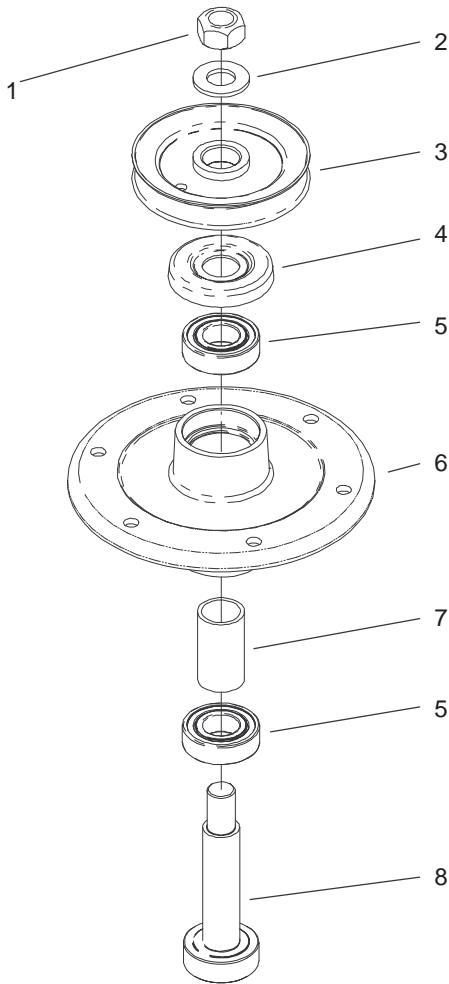
Ref. No.	Part No.	Qty.	Description	Ref. No.	Part No.	Qty.	Description
1	106-0615	1	36" Deck ASM	18	51-3660	1	Pulley-Idler
1:2	32148-9	2	Insert-Nut	19	105-0889	1	Idler Arm ASM
1:3	104-8185	1	Decal-Belt Routing	20	3296-5	1	Nut-Lock, NI
1:4	68-8340	1	Decal-Torque	21	105-2673	1	Spring-Extension
1:5	43-8480	1	Decal-Danger				
1:6	106-5532	1	Decal-Antiscalp				
1:7	67-5360	1	Decal-Danger				
1:8	104-8569	1	Decal-Warning				
1:9	106-0703	1	Decal				
1:10	66-1340	1	Decal-Danger				
2	51-3530	1	V-Belt-Drive, Deck				
3	1-633166	1	Pulley-Idler				
4	98-5975	1	Washer-Belleville				
5	3256-24	2	Washer-Flat				
6	323-6	1	Screw-HH				
7	3231-22	11	Screw-CARR				
8	106-0785	1	Spindle Housing ASM				
9	32128-21	12	Nut-HF				
10	56-2390	2	Blade				
11	92-9820	2	Stiffener-Blade				
12	3256-6	2	Washer-Flat				
13	44-2200	2	Screw-Blade				
14	106-0787	1	Spindle Housing ASM				
15	323-12	1	Screw-HH				
16	51-3641	1	Sleeve-Pivot, Idler				
17	3211-5	1	Screw-HH				



Sheet No.:A1

### Spindle Assembly No. 106-0785

Ref. No.	Part No.	Qty.	Description	Ref. No.	Part No.	Qty.	Description
1	3219-7	1	Nut-Hex				
2	7-4150	1	Washer				
3	104-1117	1	Pulley And Hub ASM				
4	106-0873	1	Shield-Bearing				
5	104-6325	2	Bearing				
6	106-0819	1	Housing-Spindle				
7	106-0795	1	Spacer-Bearing				
8	106-0781	1	Shaft-Spindle				



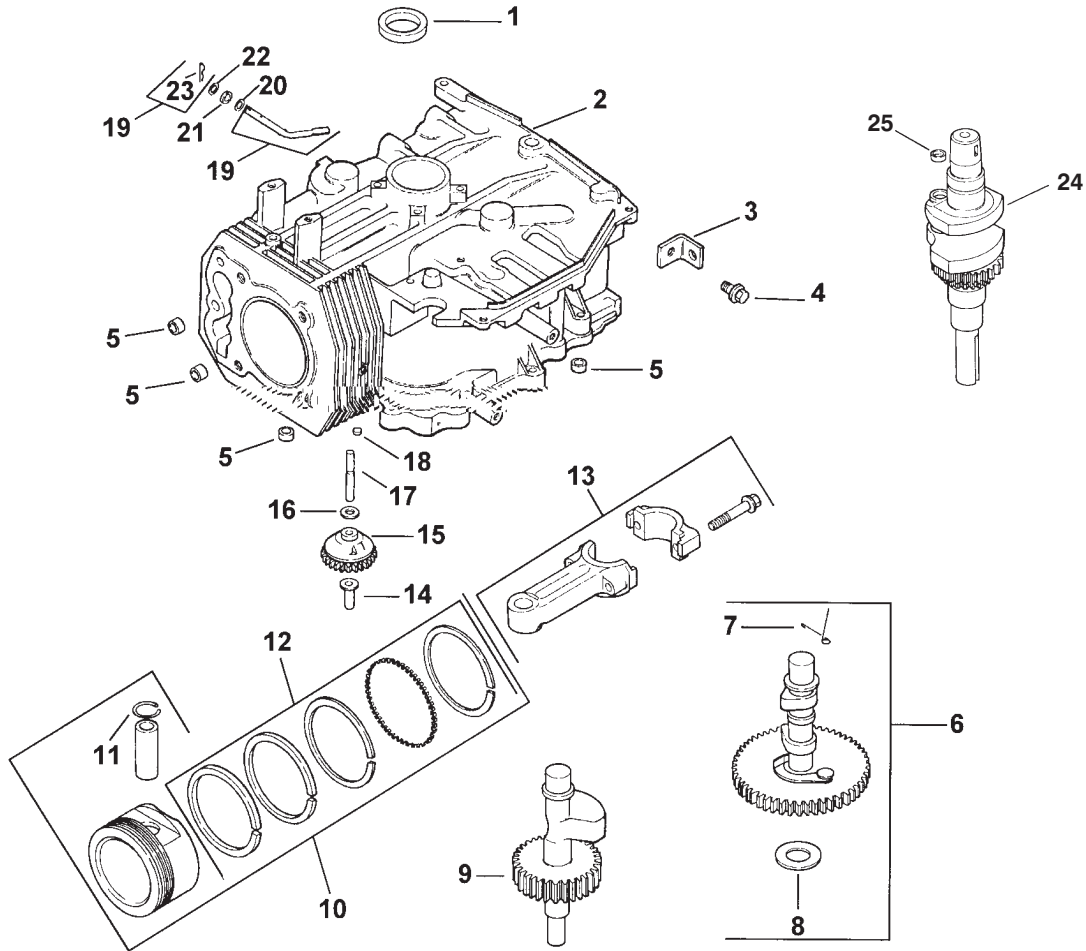
Sheet No.:A2

### Spindle Assembly No. 106-0787

Ref. No.	Part No.	Qty.	Description	Ref. No.	Part No.	Qty.	Description
1	3219-7	1	Nut-Hex				
2	7-4150	1	Washer				
3	104-1118	1	Pulley And Hub ASM				
4	106-0873	1	Shield-Bearing				
5	104-6325	2	Bearing				
6	106-0819	1	Housing-Spindle				
7	106-0795	1	Spacer-Bearing				
8	106-0782	1	Shaft-Spindle				





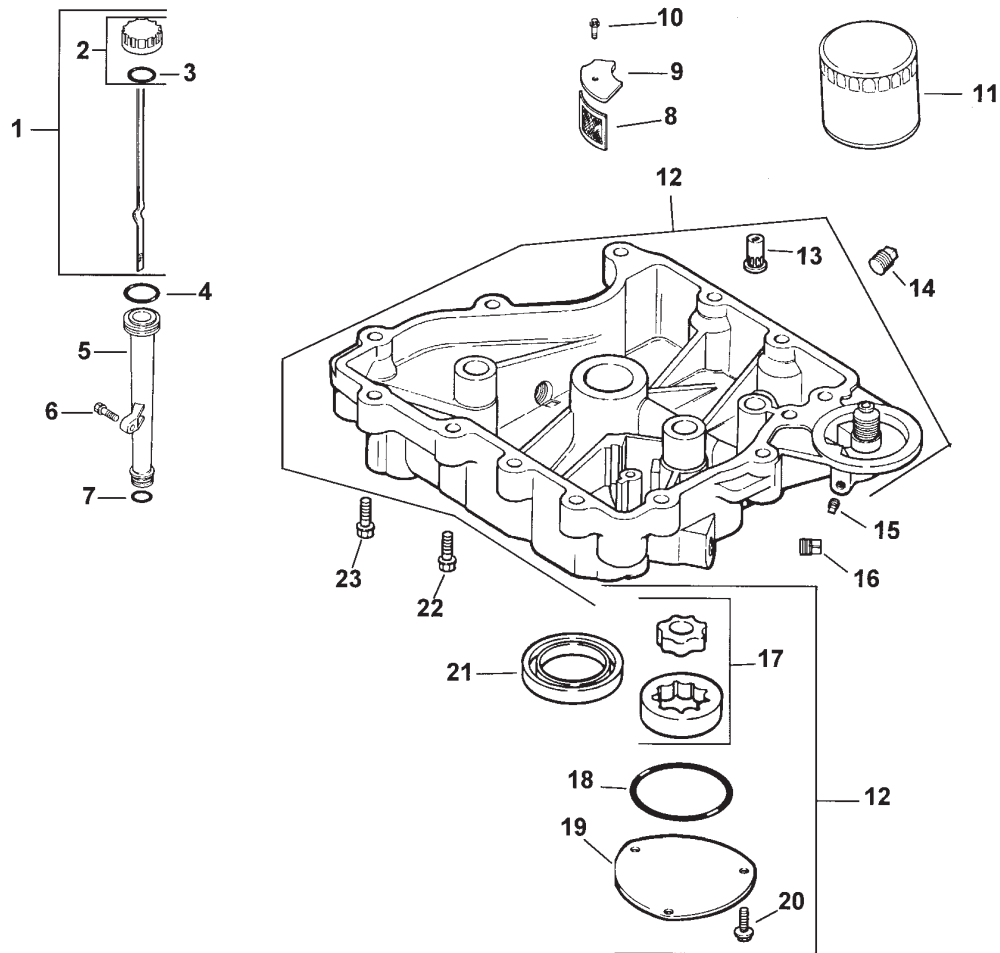


## Crankcase Assembly – Kohler Model CV15T-41604

Ref. No.	Part No.	Qty.	Description
1	12 032 03-S	1	Seal-Crankshaft
2	12 522 18-S	1	Shortblock
3	12 445 02-S	1	Strap-Lifting
4	M-839025-S	1	Screw-HF M8x1.25x22
5	24 380 13-S	4	Dowel-Locating
6	12 755 49-S	1	Kit-Camshaft (Incl.7-8)
7	12 089 31-S	1	Spring-Actuating
8	12 422 07-S	A/R	Shim-Camshaft, White
8	12 422 08-S	1	Shim-Camshaft, Blue
8	12 422 09-S	A/R	Shim-Camshaft, Red
8	12 422 10-S	A/R	Shim-Camshaft, Yellow
8	12 422 11-S	A/R	Shim-Camshaft, Green
8	12 422 12-S	A/R	Shim-Camshaft, Gray
8	12 422 13-S	A/R	Shim-Camshaft, Black
9	12 144 27-S	1	Shaft-Balance
10	12 874 07-S	1	Piston w/Ring Set STD (Incl. 11,12)
10	12 874 08-S	1	Set-Piston w/Ring .25
10	12 874 09-S	1	Set-Piston w/Ring .50
10	12 874 11-S	1	Set-Piston w/Ring .08
11	12 018 02-S	2	Retainer-Piston Pin
12	12 108 07-S	1	Ring Set STD
12	12 108 08-S	1	Ring Set .25
12	12 108 09-S	1	Ring Set .50
13	12 067 05-S	1	Rod-Connecting, STD
13	12 067 06-S	1	Rod-Connecting .25

Ref. No.	Part No.	Qty.	Description
14	12 380 01-S	1	Pin-Governor Regulating
15	12 043 05-S	1	Gear-Governor
16	M-631005-S	1	Washer-Plain, 6mm
17	12 144 02-S	1	Shaft-Governor Gear
18	52 139 09-S	1	Plug-Cup
19	12 755 64-S	1	Kit-Governor Cross Shaft (Incl. 23)
20	X-25-102-S	1	Washer-Plain, 1/4
21	12 032 01-S	1	Seal-Governor Cross Shaft
22	M-631015-S	1	Washer-Plain, 6mm
23	12 154 05-S	1	Clip-Hitch Pin
24	12 014 30-S	1	Crankshaft ASM (Incl. 25)
25	12 139 01-S	1	Plug-Cup
*	12 755 93-S	1	Set-Gasket

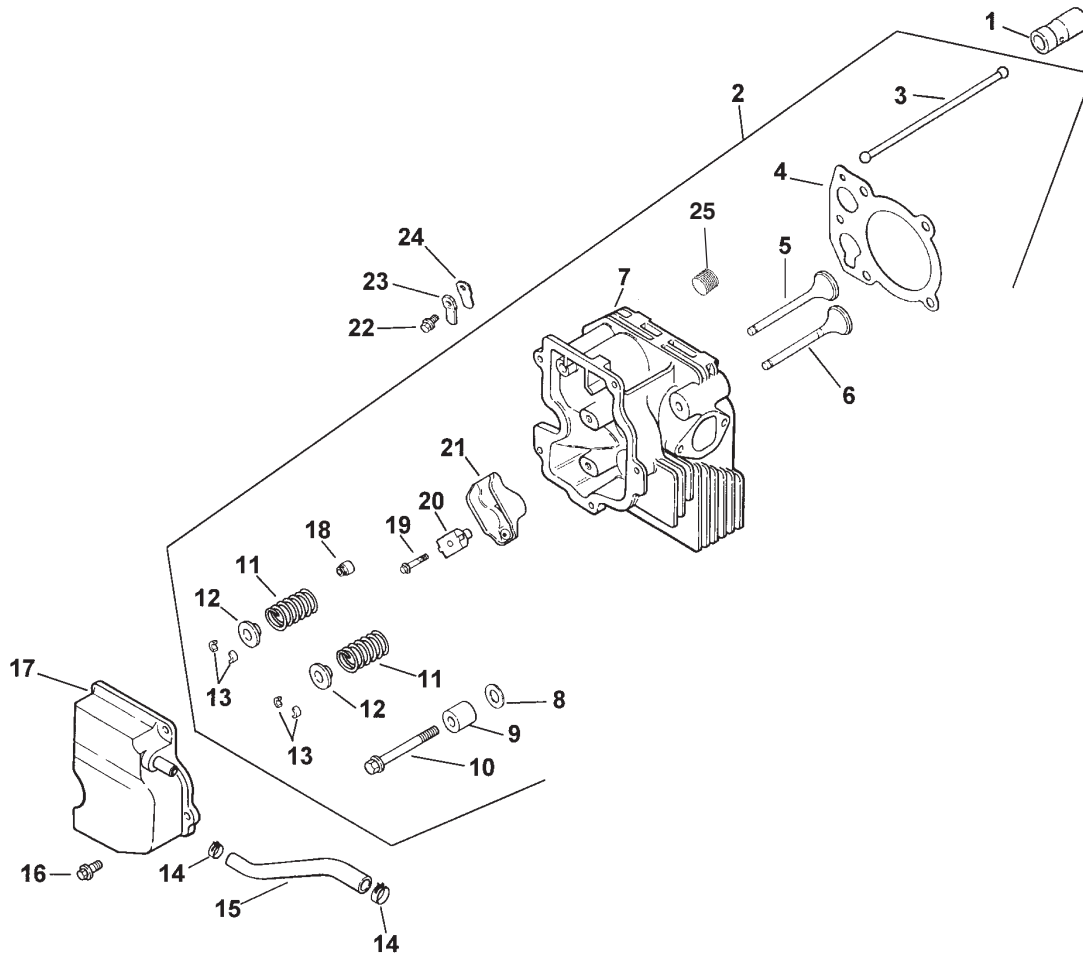
\* Not illustrated  
Order Parts from Kohler



## Oil Pan and Lubrication Assembly Kohler Model CV15T-41604

Ref. No.	Part No.	Qty.	Description	Ref. No.	Part No.	Qty.	Description
1	12 038 01-S	1	Dipstick ASM(Incl. 2-3)	19	12 096 34-S	1	Cover-Oil Pump
2	25 755 13-S	1	Kit-Oil Fill Cap (Incl. 3)	20	M-545016-S	3	Screw-HF, M5x0.8x16
3	12 153 03-S	1	O Ring-Dipstick	21	12 032 03-S	1	Seal-Oil (PTO End)
4	12 153 02-S	1	O Ring-Upper Oil Fill Tube	22	24 086 16-S	11	Screw-HF, M8x1.25x45
5	12 123 04-S	1	Tube-Oil Fill	23	24 086 17-S	1	Screw-HF, M8x1.25x45
6	M-545020-S	1	Screw-HF, M5x0.8x20				
7	12 153 01-S	1	O Ring-Lower Oil Fill Tube				
8	25 162 07-S	1	Screen-Oil Pickup				
9	12 096 03-S	1	Cover-Oil Pickup Screen				
10	M-545016-S	1	Screw-HF, M5x0.8x16				
11	52 050 02-S	1	Filter-Oil				
12	12 199 50-S	1	Pan ASM - Oil (Incl.13, 17-20)				
13	25 462 09-S	1	Valve-Oil Pressure Relief				
14	25 139 57-S	1	Plug-Pipe, 3/8 SH				
15	25 139 52-S	1	Plug-Pipe, 1/8				
16	25 139 62-S	1	Plug-Pipe, 3/8 HSH				
17	12 393 01-S	1	Pump-Oil				
18	12 153 06-S	1	O Ring-Oil Pump Cover				

Order Parts From Kohler

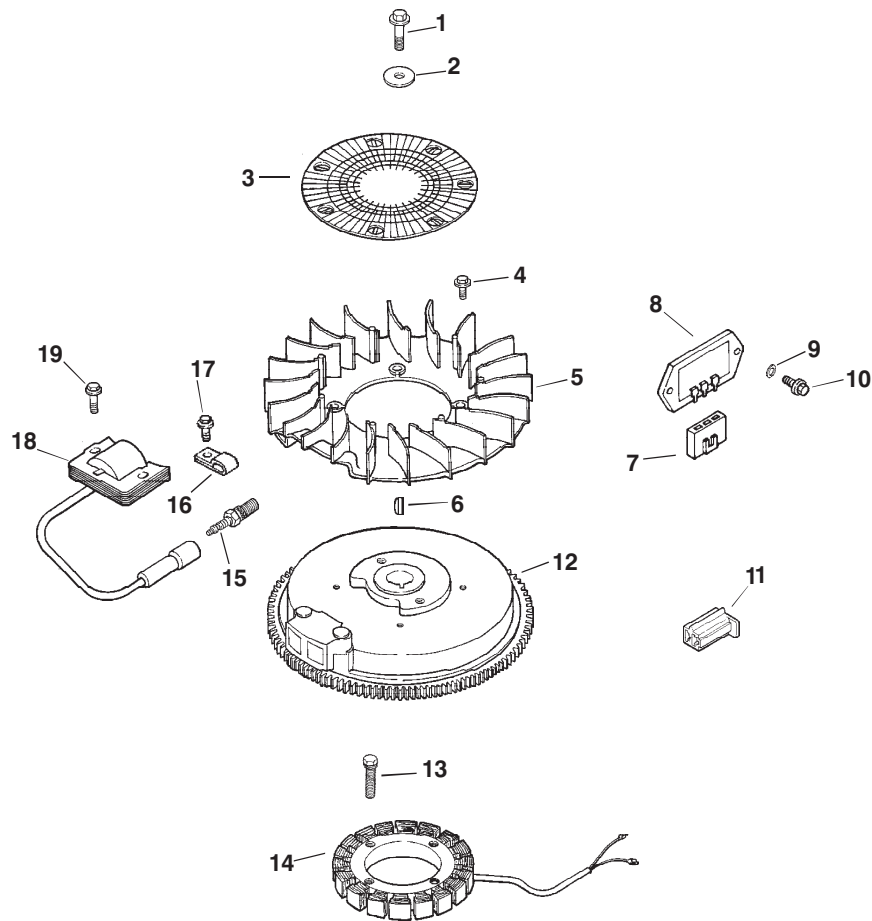


## Cylinder Head, Valves And Breather Assembly Kohler Model CV15T-41604

Ref. No.	Part No.	Qty.	Description
1	12 351 01-S	2	Lifter-Valve
2	12 755 81-S	1	Kit-Cylinder Head (Incl. 3-13, 18-21, 25, Carburator Gasket 12 041 01-S(2), Exhaust Manifold Gasket 12 041 03-S, Air Cleaner Gasket 12 041 02-S)
3	12 411 01-S	2	Rod-Push
4	12 041 10-S	1	Gasket-Cylinder Head
5	12 017 01-S	1	Valve-Intake STD
5	12 017 02-S	1	Valve-Intake .25
6	12 016 01-S	1	Valve-Exhaust STD
6	12 016 02-S	1	Valve-Exhaust, .25
7	12 318 19-S	1	Head - Cylinder
8	12 468 05-S	1	Washer-Plain 13/32
9	12 112 13-S	1	Spacer-Head Bolt Exhaust Port
10	12 086 15-S	5	Screw-HF M10x1.5x81
11	12 089 01-S	2	Spring-Valve
12	12 173 01-S	2	Cap-Valve Spring
13	12 755 03-S	2	Kit-Retainer
14	25 237 14-S	2	Clamp-Hose

Ref. No.	Part No.	Qty.	Description
15	12 326 03-S	1	Hose-Breather
16	M-645020-S	3	Screw-HF M6x1.0x20
17	12 096 07-S	1	Cover-Valve w/Nipple
18	24 032 05-S	1	Seal-Valve Stem
19	M-640034-S	2	Screw-HF M6x1.0x34
20	12 599 03-S	2	Pivot-Rocker Arm
21	25 186 01-S	2	Arm-Rocker
22	M-545010-S	1	Screw-HF M5x0.8x10
23	12 018 01-S	1	Retainer-Breather Reed
24	12 402 02-S	1	Reed-Breather
25	25 139 60-S	1	Plug-Pipe, HSH 1/8

Order Parts From Kohler



## Ignition and Electrical Assembly Kohler Model CV15T-41604

Ref. No.	Part No.	Qty.	Description
1	12 086 14-S	1	Screw-HF,M10x1.5x46
2	12 468 03-S	1	Washer-Plain, 3/8
3	12 162 03-S	1	Screen-Grass
4	25 086 47-S	4	Bolt-Shoulder
5	12 157 03-S	4	Fan
6	X-42-15-S	1	Key
7	236602-S	1	Connector-Rectifier, Regulator(3 contact)
8	12 403 01-S	1	Rectifier-Unregulated, 15 amp
9	X-22-11-S	2	Washer - Lock
10	M-639016-S	2	Screw-HF, M6x1.0x16
11	41 155 03-S	1	Connector
12	12 025 33-S	1	Flywheel
13	M-548025-S	2	Screw-HH M5x0.8x25
14	237878-S	1	Kit-Stator, 15 Amp
15	12 132 06-S	1	Spark Plug
16	X-728-1-S	2	Clip-Cable
17	M-545010-S	2	Screw-HF, M5x0.8x10
18	12 584 05-S	1	Module-Ignition
19	M-545020-S	2	Screw-HF, M5x0.8x20
*	25 518 05-S	1	Lead-Black, Rectifier/Regulator,(5"-14Gauge Uninsulated Push On

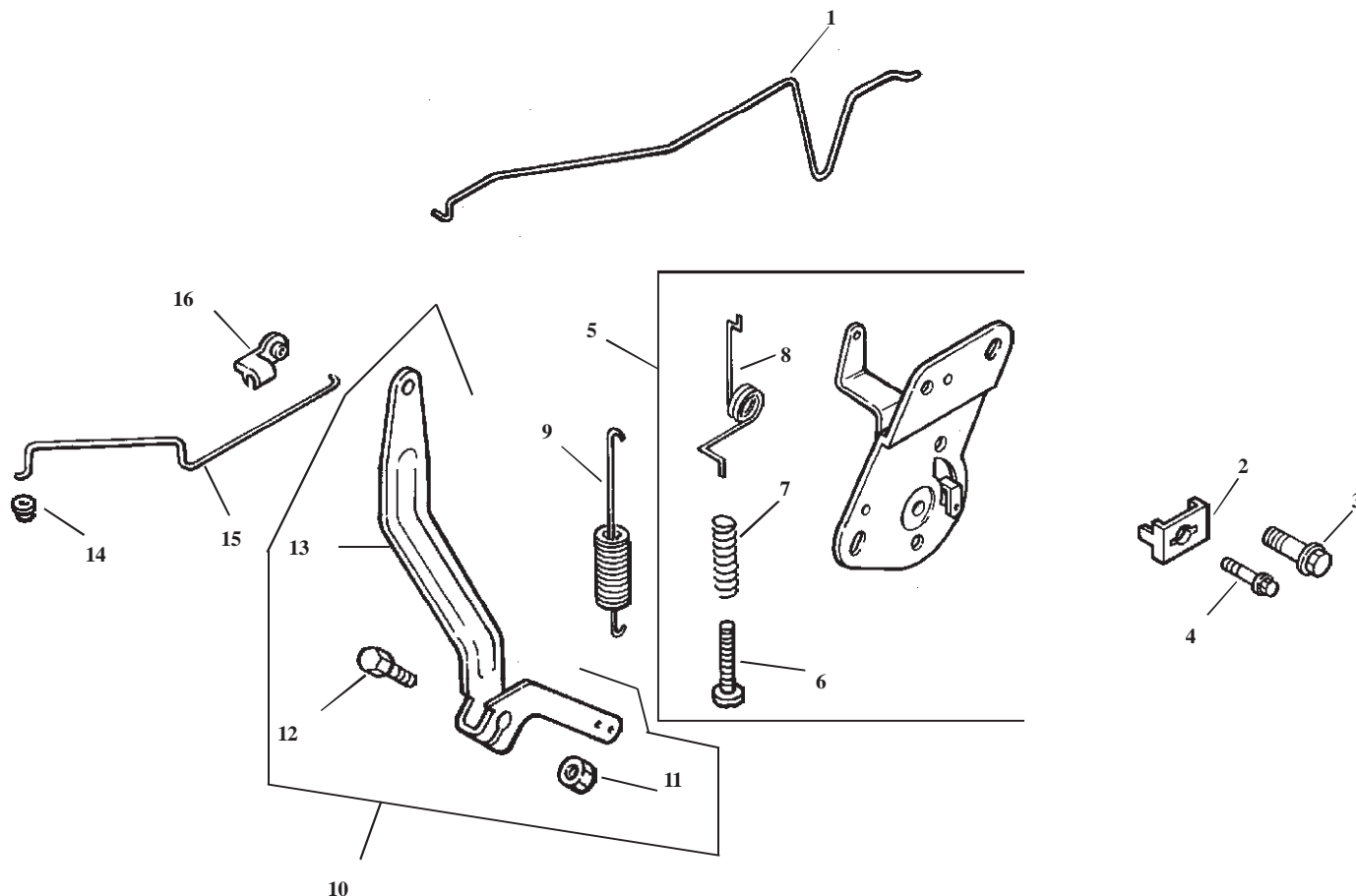
Ref. No.	Part No.	Qty.	Description
*	12 518 01-S	1	Tab Terminals) Lead-White, Ground To Kill, (19"-18 Gauge Fully Insulated Push On Tab and Uninsulated Push On Tab Terminals
*	25 518 12-S	1	Lead-Black,Ground, (5"-12Gauge-Insulated Grip Barrel Eyelet Terminals

\* Not illustrated  
Order Parts From Kohler







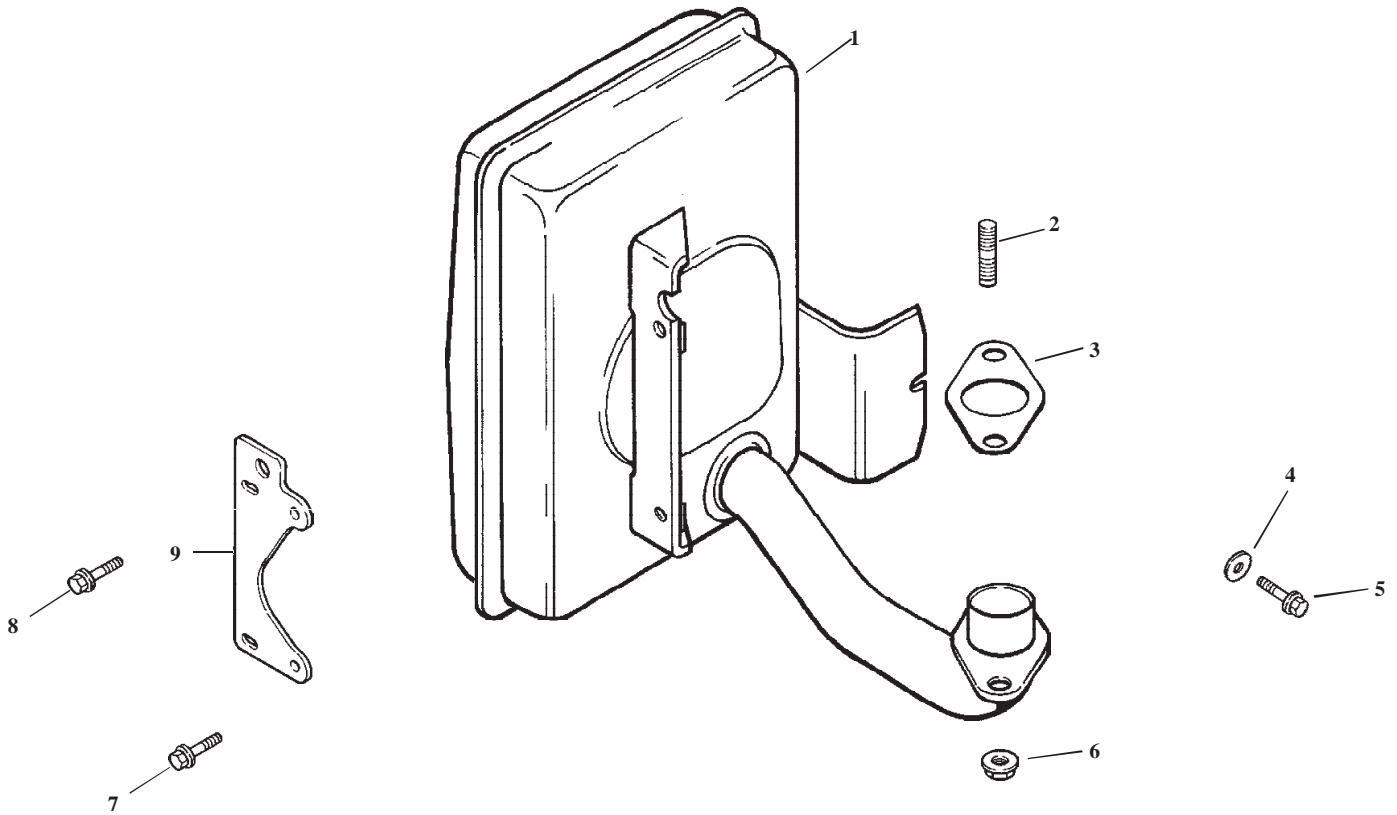


## Engine Controls Assembly Kohler Model CV15T-41604

Ref. No.	Part No.	Qty.	Description	Ref. No.	Part No.	Qty.	Description
1	12 079 07-S	1	Linkage-Choke				
2	12 237 01-S	1	Clamp-Cable				
3	M-664020-S	2	Screw-Lobed Socket M6x1.0x20				
4	M-545016-S	1	Screw-HF M5x .08x16				
5	12 536 01-S	1	Control-Speed ASM (Incl. 6-8)				
6	M-443025-S	1	Screw-SPH, M4x0.7x25				
7	12 089 11-S	1	Spring-Choke Adjustment				
8	12 089 23-S	1	Spring-Choke Return				
9	12 089 19-S	1	Spring-Governor				
10	12 755 83-S	1	Kit - Governor Lever (Incl. 11-13)				
11	12 100 07-S	1	Nut-HF				
12	52 211 04-S	1	Bolt - Round HD				
13	12 090 28-S	1	Lever-Governor				
14	25 158 08-S	1	Bushing-Linkage Retaining				
15	12 079 01-S	1	Linkage-Throttle				
16	25 158 11-S	1	Bushing-Throttle Linkage				

Order Parts From Kohler





## Exhaust Assembly Kohler Model CV15T-41604

Ref. No.	Part No.	Qty.	Description
1	12 068 44-S	1	Muffler
2	25 072 04-S	2	Stud M8x1.25x33
3	12 041 03-S	1	Gasket-Exhaust Manifold
4	X-25-78-S	1	Washer-Plain, 1/4
5	M-545016-S	1	Screw-HF, M5x0.8x16
6	M-841080-S	2	Nut-HF, M8x1.25
7	M-645016-S	2	Screw-HF, M6x1.0x16
8	M-645025-S	2	Screw-HF, M6x1.0x25
9	12 126 71-S	1	Bracket-Muffler

Ref. No.	Part No.	Qty.	Description

Obtain Parts From Kohler





