



Mid-Size Mower

ProLine Pistol Grip Hydro 15 HP with 44in SD Mower

Model No. 30434-230000001 and Up

Parts Catalog

Ordering Replacement Parts

To order replacement parts, please supply: the part number, the quantity, and the description of each part desired.

Understanding Reference Numbers

Each identified part in an illustration has a reference number. The reference number for a part also appears in the parts list, along with other information about the part.

This catalog uses two special reference number formats, one to indicate parts in a service assembly and another to indicate the quantity of a given part in an illustration.

Service Assembly Reference Numbers

Parts in service assemblies have reference numbers in the form **a:b**. The **a** represents the reference number of the entire service assembly and the **b** represents a sequential number unique to each part within the service assembly.

For example, a wheel assembly might be identified by reference number **6**, the tire by **6:1**, the valve by **6:2**, and the wheel by **6:3**. When you order the assembly identified by reference number **6**, you receive all parts identified by reference numbers **6:1**, **6:2**, and **6:3**. However, you may also order any part individually.

Reference numbers of this type appear in illustrations and in part lists.

Reference Numbers Indicating Quantity

In an illustration, if a reference number indicates more than one part, the reference number has the form **nX y**. The **n** represents the quantity of the part, the **X** is the multiplication symbol, and the **y** represents the reference number.

For example, in an illustration, the reference number **2X 37** means that two of the parts identified by reference number **37** are indicated.

Contents

Description	Page	Description	Page
Engine and Clutch Assembly	4	Parking Brake Assembly	13
Fuel Tank, Hydraulic Tank, Pump and Filter Assembly	5	Carrier Frame Assembly	14
Hydraulic Pump Assembly No. 106-5490	6	Spindle, Pulley and Belt Assembly	15
Hydraulic Pump Assembly No. 106-5489	7	Spindle Assembly No. 106-0786	16
Wheel Motor, Pump Idler and Belt Assembly ..	8	Spindle Assembly No. 106-0784	17
Lower Control Assembly	9	Deck Assembly	18
Hydraulic Hose Assembly	10	Drive Belt and Tensioner Assembly	19
Upper Handle Assembly	11	Electrical Schematic	20
Control Panel Assembly	12	Hydraulic Schematic	21

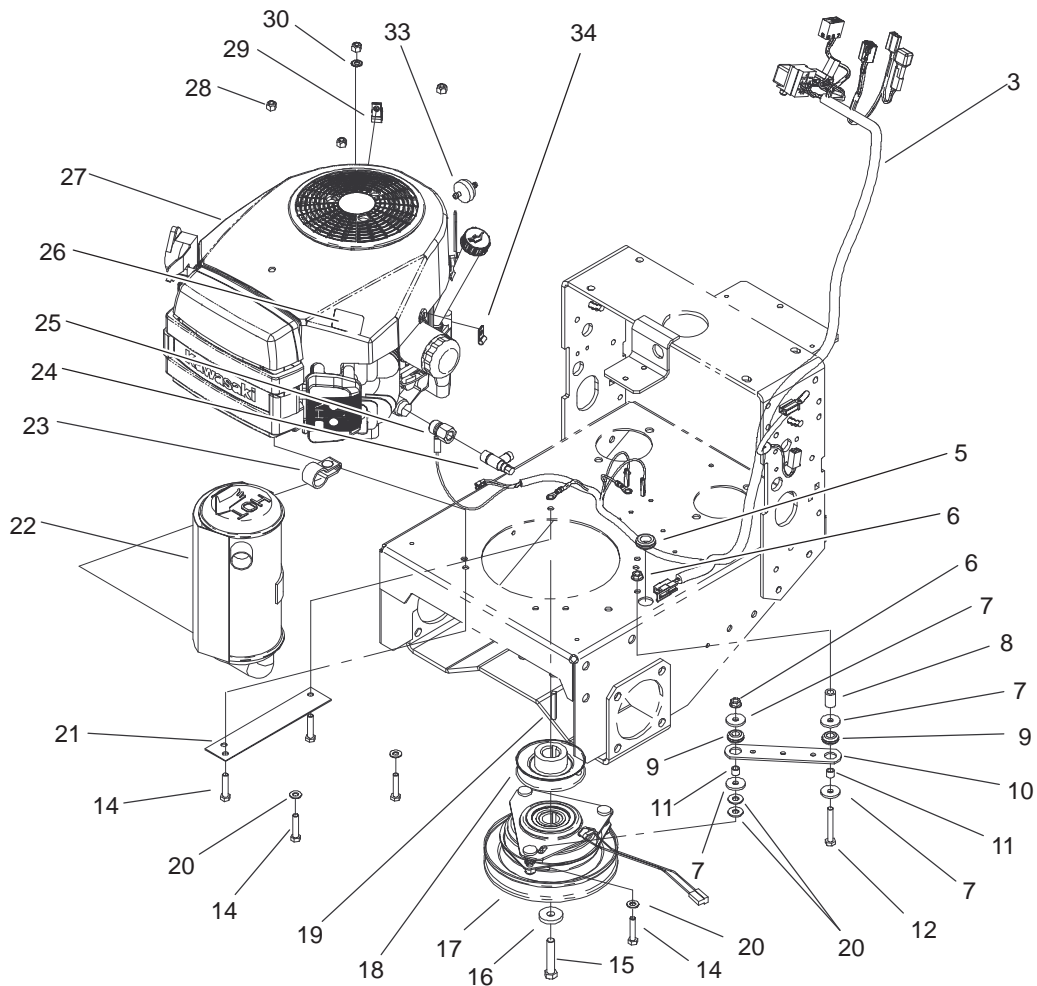
Accessories

Description	Model / Part No.	Description	Model / Part No.
Parking Brake Assembly Kit	105-0898	Recycler Kit	59220
Mid-Size Sulky	30123	Mulching Kit	59226
ProLine Mid-Size Platform Sulky	30110	Blade Assembly-Atomic 15.5	104-1300
Soft Bagger	30104	Blade-Sail, High	55-4940
Steel Bagger	30107	Blade-Recycler	92-7952
Striping Kit	30121		

Part Description Abbreviations

Part descriptions in this catalog may include the following abbreviations.

Abbreviation	Meaning	Abbreviation	Meaning
AR	as required	HYD	hydraulic
ASM	assembly	INC	incorporated
CARR	carriage	LH	left hand
DEG	degrees	NI	nylon insert
FH	flat head	PPH	Phillips pan head
GA	gauge	PTH	Phillips truss head
HF	hex flange	PTO	power take off
HH	hex head	RH	right hand
HHF	hex head flange	SFH	slotted fillister head
HLH	hex lag head	SHH	slotted hex head
HJ	hex jam	SQH	square head
HOC	height-of-cut	SHWH	slotted hex washer head
HS	hex socket	SPH	slotted pan head
HSBH	hex socket button head	SRH	slotted round head
HSFH	hex socket flat head	STD	standard
HSH	hex socket head	TAP	self tapping
HWH	hex washer head	TTH	Torx truss head
HWHTF	hex washer head thread forming	WH	wing head



Sheet No.: 3

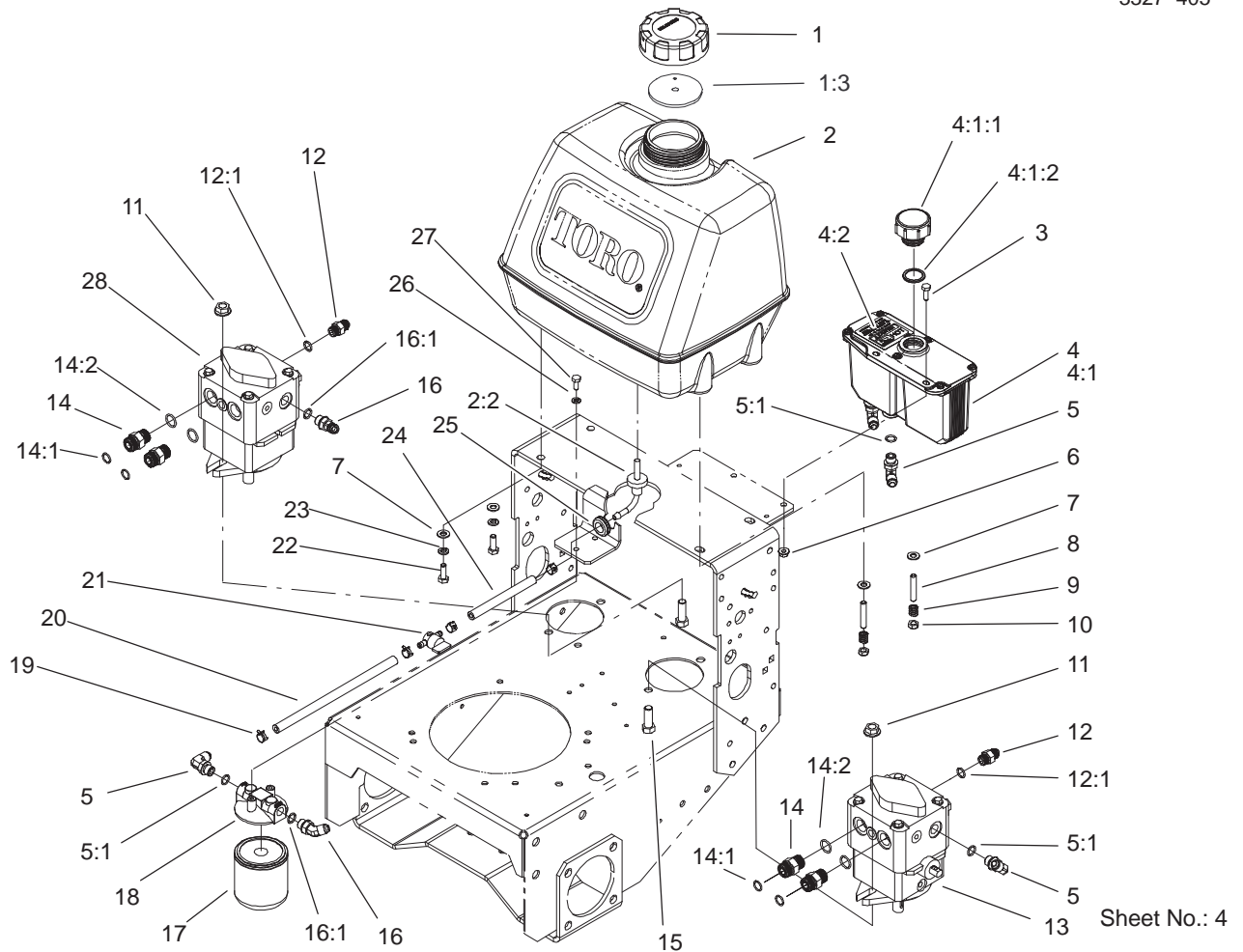
Engine and Clutch Assembly

Ref. No.	Part No.	Qty.	Description
3	106-0728	1	Harness-Wire
5	237-124	1	Grommet
6	32128-20	2	Nut-HF
7	1-613235	4	Washer
8	104-6373	1	Tube-Retainer
9	1-633630	2	Grommet-Brake
10	1-633543	1	Strap-Clutch/Brake
11	1-633545	2	Spacer-Grommet
12	322-11	1	Screw-HH
14	322-7	5	Screw-HH
15	3212-9	1	Screw-HH
16	112843	1	Washer
17	105-2635	1	Clutch/Brake
18	44-5940	1	Pulley
19	608006	1	Key-Square
20	3256-23	5	Washer-Flat
21	94-5847-01	1	Cover-Pulley
22	100-6467	1	Muffler
23	100-6468	1	Clamp-Muffler
24	103-1965	1	Valve-Drain, Oil
25	103-1966	1	Adapter
26	106-0699	1	Decal-Warning, Hot Surfaces
☆27		1	Engine-Kawasaki, Fh451v-As11
28	3296-29	4	Nut-Lock, NI

Ref. No.	Part No.	Qty.	Description
29	2412-87	1	Clamp-Cable
30	3255-8	1	Washer-Lock
33	56-6360	1	Filter-Fuel
34	2412-72	1	Clip-Closed, Insulated
*99	103-1964	1	Hose-Drain, Oil

☆ Not serviced separately

* Not illustrated



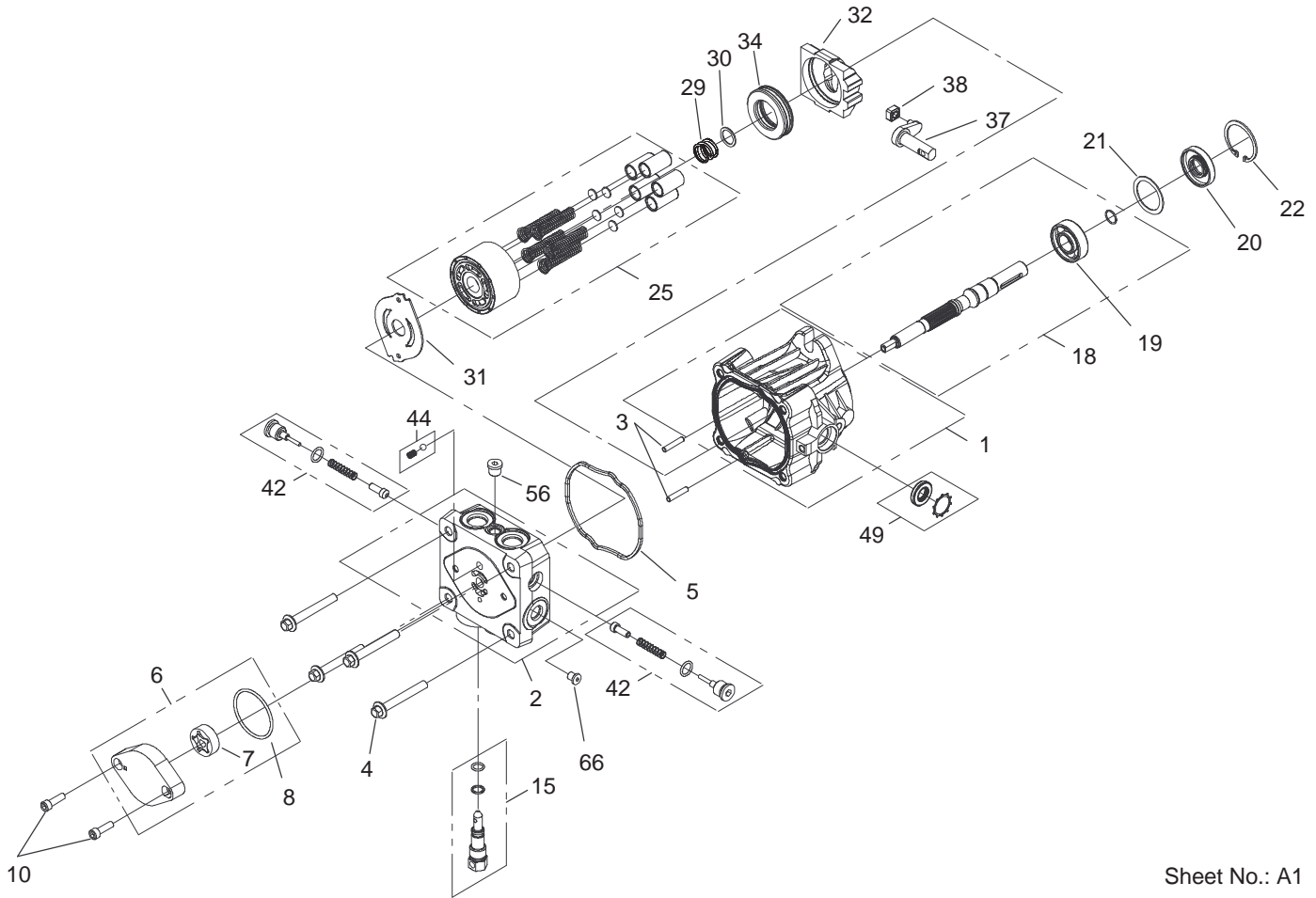
Sheet No.: 4

Fuel Tank, Hydraulic Tank, Pump and Filter Assembly

Ref. No.	Part No.	Qty.	Description
1	88-3980	1	Gas Cap ASM
1:3	88-4010	1	Gasket-Cap, Gas
2	106-0730	1	Fuel Tank ASM
2:2	103-2605	1	Fitting-Fuel, Bulkhead
3	321-4	2	Screw-HH
4	103-1947	1	HYD Reservoir ASM
☆4:1		1	Reservoir-HYD
4:1:1	103-1948	1	Cap-Reservoir, HYD
4:1:2	103-1949	1	Gasket-Cap
4:2	1-523552	1	Decal-Tank, HYD
5	353-374	4	Elbow-90°
5:1	237-42	1	O-Ring
6	32128-33	2	Nut-HF
7	3256-23	4	Washer-Flat
8	104-8121	2	Stud-Threaded
9	1-633349	2	Spring-Tank, Fuel
10	3296-47	2	Nut-Lock, NI
11	32128-42	4	Nut-HF
12	353-384	2	Fitting-Straight
12:1	237-42	1	O-Ring
13	106-5490	1	Pump-Hydraulic
14	340-4	4	Adapter
14:1	237-30	1	O-Ring
14:2	237-79	1	O-Ring
15	324-5	4	Screw-HH
16	353-212	2	Elbow

Ref. No.	Part No.	Qty.	Description
16:1	237-42	1	O-Ring
17	1-633750	1	Filter-HYD
17	1-633752	1	Filter-HYD, Winter
18	104-7836	1	Head-Filter
19	2412-98	4	Clamp
20	47-2982	1	Hose-Fuel
21	1-603770	1	Valve-Fuel
22	322-4	2	Screw-HH
23	3253-4	2	Washer-Lock
24	47-2980	1	Hose-Fuel
25	237-124	1	Grommet
26	3253-3	2	Washer-Lock
27	321-3	2	Screw-HH
28	106-5489	1	Pump-Hydraulic

☆ Not serviced separately



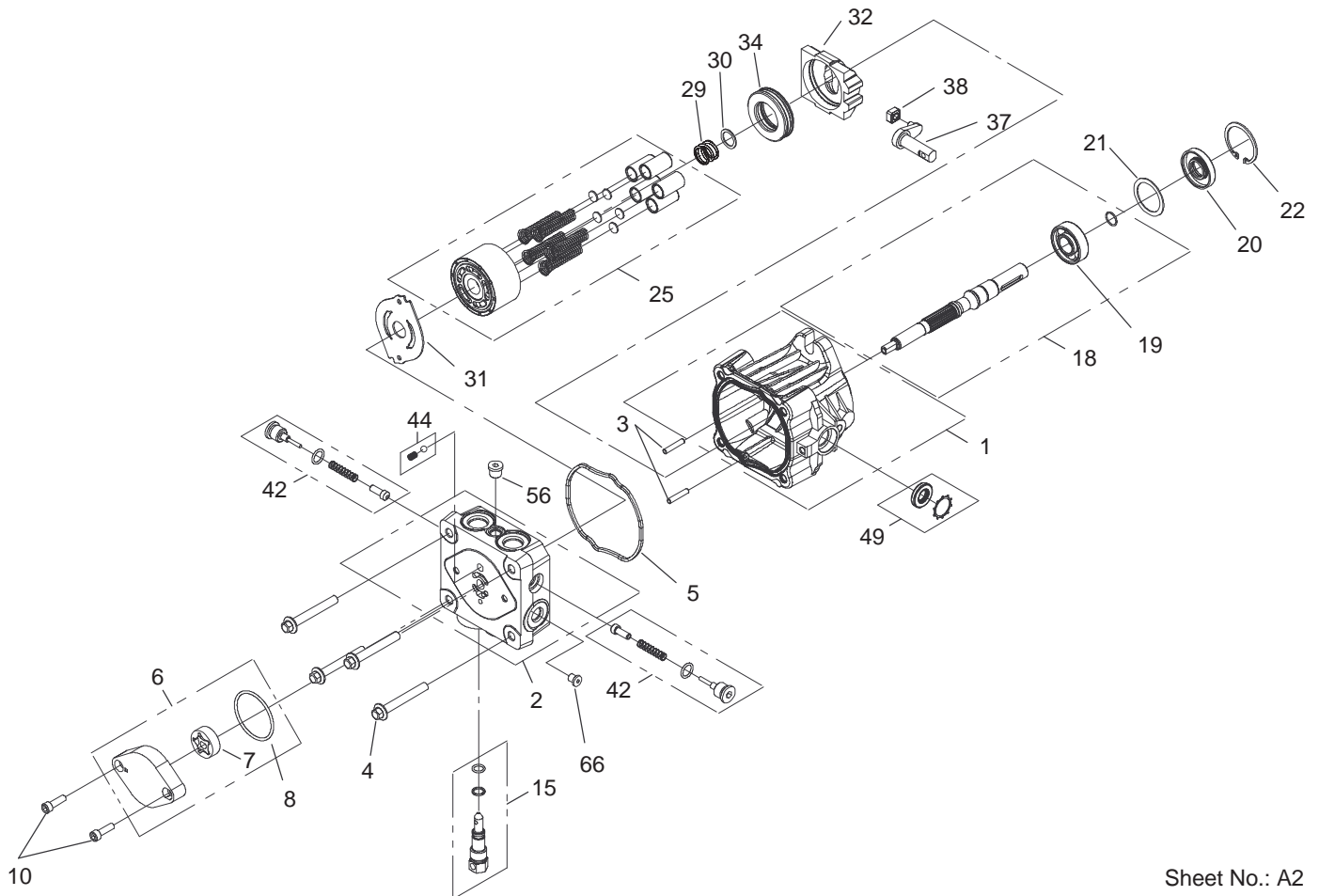
Sheet No.: A1

Hydraulic Pump Assembly No. 106-5490

Ref. No.	Part No.	Qty.	Description
1	106-8751	1	Housing Kit
2	106-8752	1	End Cap Kit W/Poppets
3	106-8753	2	Pin-Headless, Straight
4	106-8754	4	Bolt-HF
5	106-8755	1	O Ring-Housing
6	106-8756	1	Charge Pump Kit
7	104-2122	1	Gerotor ASM
8	106-8757	1	O-Ring
10	106-8758	2	Screw-HSH
15	106-8759	1	Bypass Valve Kit
18	103-2664	1	Input Shaft Kit
19	104-5311	1	Bearing-Ball
20	104-5310	1	Seal-Lip
21	104-5308	1	Spacer
22	104-5309	1	Ring-Retaining
25	104-2106	1	Cylinder Block ASM
29	94-1936	1	Spring-Block
30	94-1937	1	Washer-Block, Thrust
31	105-6185	1	Plate-Valve
32	94-1907	1	Swashplate-Variable
34	94-6922	1	Bearing-Thrust
37	94-1909	1	Arm-Trunion
38	94-1910	1	Guide-Slot
42	98-3252	2	Valves-Check W/Poppet

Ref. No.	Part No.	Qty.	Description
44	106-8760	1	Charge Relief Valve Kit
49	106-8761	1	Trunnion Seal/Retainer Kit
56	106-8762	1	Plug-HSH
66	106-8763	1	Plug-HSH
*99	105-6184	1	Seal Overhaul Kit

* Not illustrated



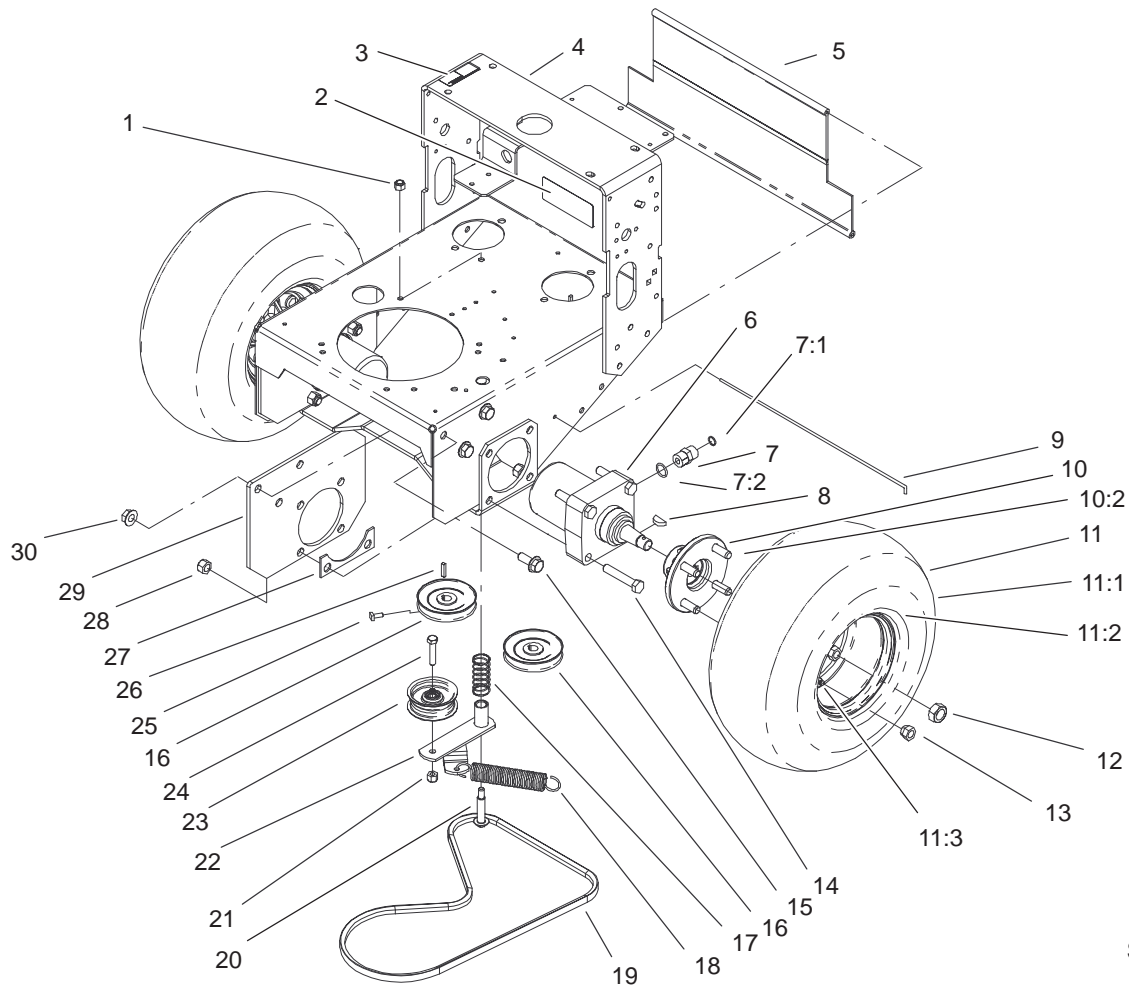
Sheet No.: A2

Hydraulic Pump Assembly No. 106-5489

Ref. No.	Part No.	Qty.	Description
1	106-8751	1	Housing Kit
2	106-8752	1	End Cap Kit W/Poppets
3	106-8753	2	Pin-Headless, Straight
4	106-8754	4	Bolt-HF
5	106-8755	1	O Ring-Housing
6	106-8756	1	Charge Pump Kit
7	104-2122	1	Gerotor ASM
8	106-8757	1	O-Ring
10	106-8758	2	Screw-HSH
15	106-8759	1	Bypass Valve Kit
18	103-2664	1	Input Shaft Kit
19	104-5311	1	Bearing-Ball
20	104-5310	1	Seal-Lip
21	104-5308	1	Spacer
22	104-5309	1	Ring-Retaining
25	104-2106	1	Cylinder Block ASM
29	94-1936	1	Spring-Block
30	94-1937	1	Washer-Block, Thrust
31	105-6185	1	Plate-Valve
32	94-1907	1	Swashplate-Variable
34	94-6922	1	Bearing-Thrust
37	94-1909	1	Arm-Trunion
38	94-1910	1	Guide-Slot
42	98-3252	2	Valves-Check W/Poppet

Ref. No.	Part No.	Qty.	Description
44	106-8760	1	Charge Relief Valve Kit
49	106-8761	1	Trunnion Seal/Retainer Kit
56	106-8762	1	Plug-HSH
66	106-8763	1	Plug-HSH
*99	105-6184	1	Seal Overhaul Kit

* Not illustrated

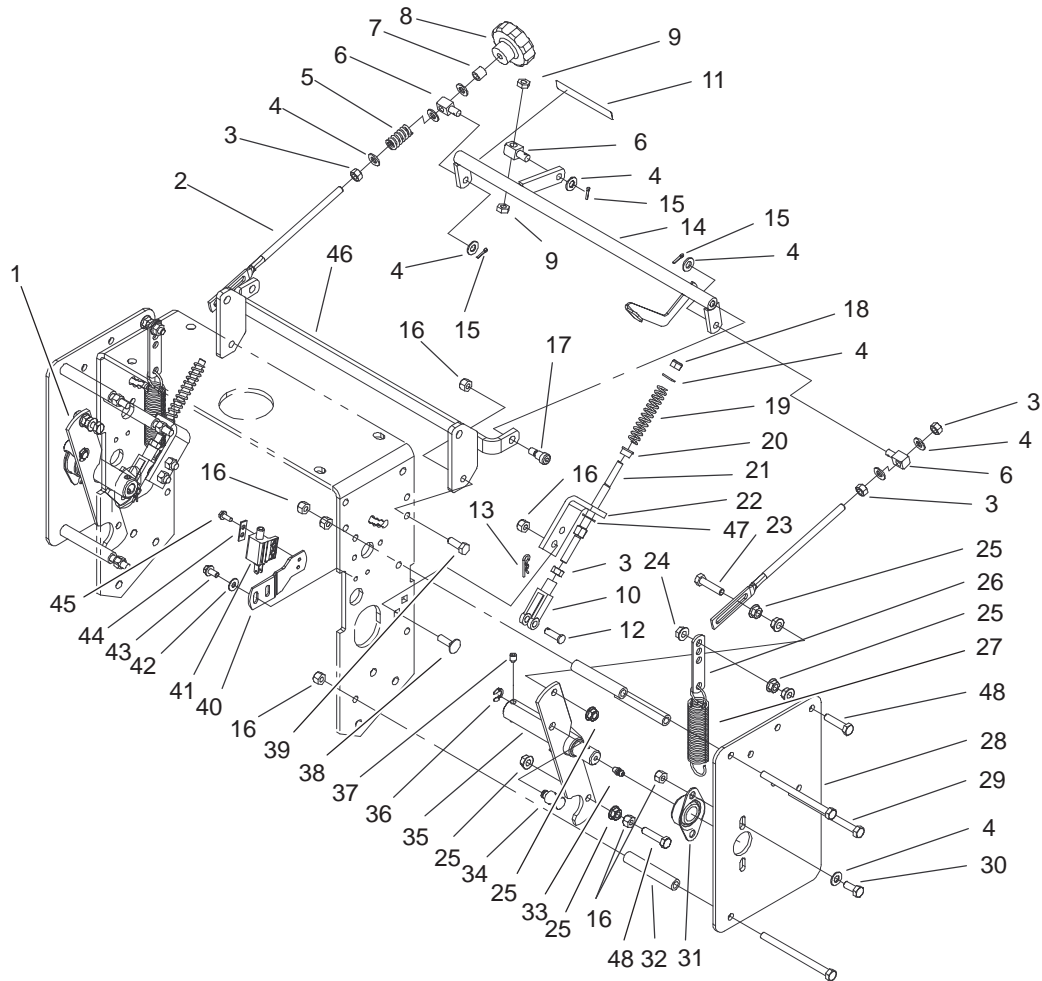


Sheet No.: 5

Wheel Motor, Pump Idler and Belt Assembly

Ref. No.	Part No.	Qty.	Description
1	3296-6	1	Nut-Lock, NI
2	98-0776	1	Decal-Caution
3	95-2814	1	Decal-Shut Off, Fuel
4	106-0548-01	1	Hydro Frame ASM
5	95-1526	1	Shield-Trailing
6	104-1171	2	Motor-Wheel
7	340-6	4	Fitting-HYD, Straight
7:1	237-30	1	O-Ring
7:2	237-80	1	O-Ring
8	3257-8	2	Key-Woodruff
9	95-1529	1	Rod-Shield
10	105-0800	2	Wheel Hub/Stud ASM
10:2	10-6830	4	Stud-Type, Drive
11	104-6321	2	Wheel And Tire ASM
11:1	104-6322	1	Tire
11:2	104-6323	1	Wheel
11:3	232-27	1	Stem-Valve
12	85-7310	2	Nut-Motor, Wheel
13	242-50	8	Nut-Lug
14	325-11	8	Screw-HH
15	3234-32	6	Screw-HHF
16	105-5648	2	Pulley-Pump
17	88-1880	1	Spring-Compression
18	68-2190	1	Spring
19	105-5649	1	V-Belt
20	27-6230	1	Bolt-Wheel

Ref. No.	Part No.	Qty.	Description
21	3296-39	1	Nut-Lock, NI
22	86-4770	1	Idler Lever ASM
23	62-4540	1	Pulley
24	323-9	1	Screw-HH
25	3241-5	4	Screw-Set
26	80-6090	2	Key-Pump
27	86-4740-01	2	Spacer-Frame
28	3296-23	8	Nut-Lock, NI
29	105-5643-01	2	Plate-Frame
30	32128-23	6	Nut-HF

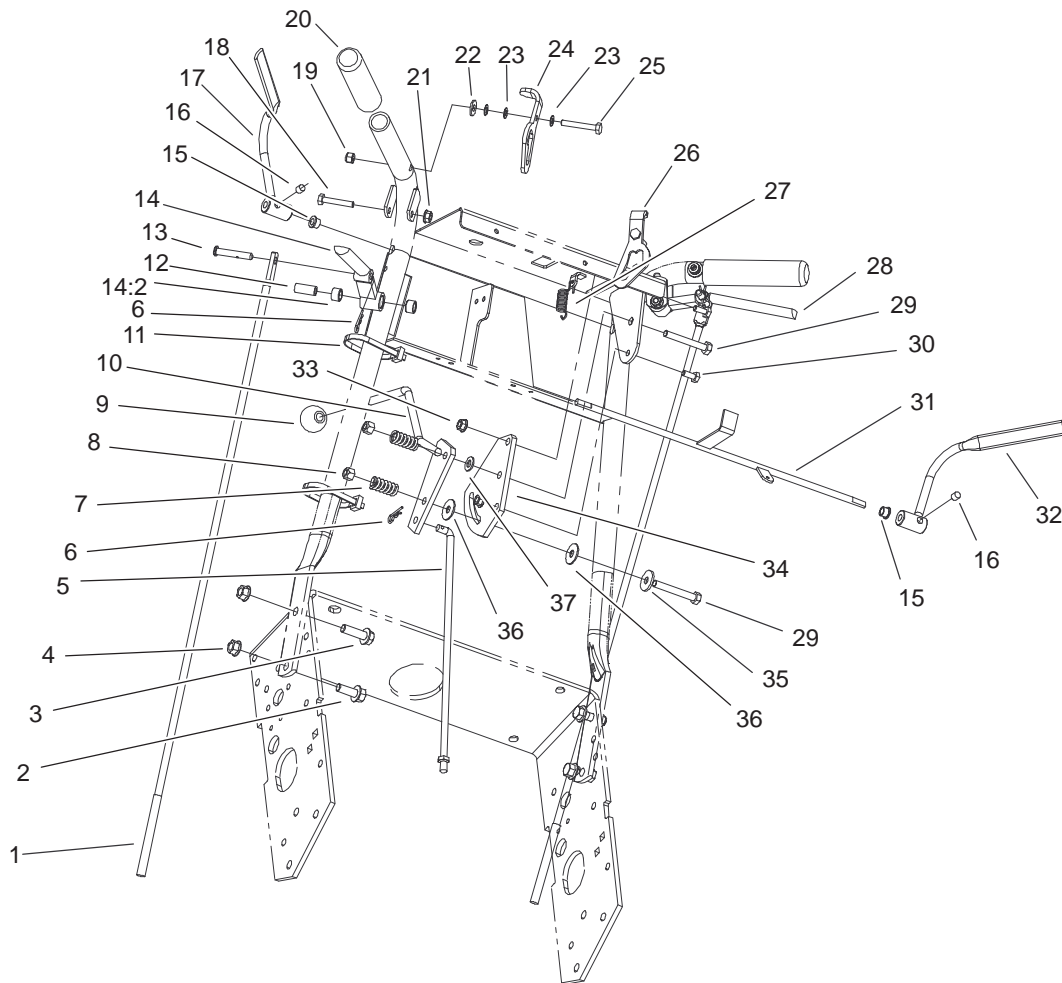


Sheet No.: 6

Lower Control Assembly

Ref. No.	Part No.	Qty.	Description
1	106-5484	1	RH Control Arm ASM
2	1-413350	2	Link-Control, Speed
3	3219-2	5	Nut-Hex
4	3256-23	14	Washer-Flat
5	1-323245	1	Spring-Compression
6	1-603676	3	Swivel-Adjustable, Short
7	1-603903	1	Spacer
8	1-413151	1	Knob-Tracking
9	3220-2	2	Nut
10	1-303105	2	Yoke-Adjustable
11	105-4109	1	Decal-Tracking
12	1-808280	2	Pin-Clevis
13	3290-307	2	Pin-Hair
14	106-5538-01	1	Speed Control Crank ASM
15	3272-5	3	Pin-Cotter
16	3296-29	18	Nut-Lock, NI
17	1-809056	2	Screw
18	3296-4	2	Nut-Lock, NI
19	1-603807	2	Spring-Return, Neutral
20	1-603735	2	Bushing-Flanged
21	105-9372	2	Stud-Adjustment
22	104-9802-01	2	Bracket-Mount, Spring
23	1-403180	2	Screw-HH

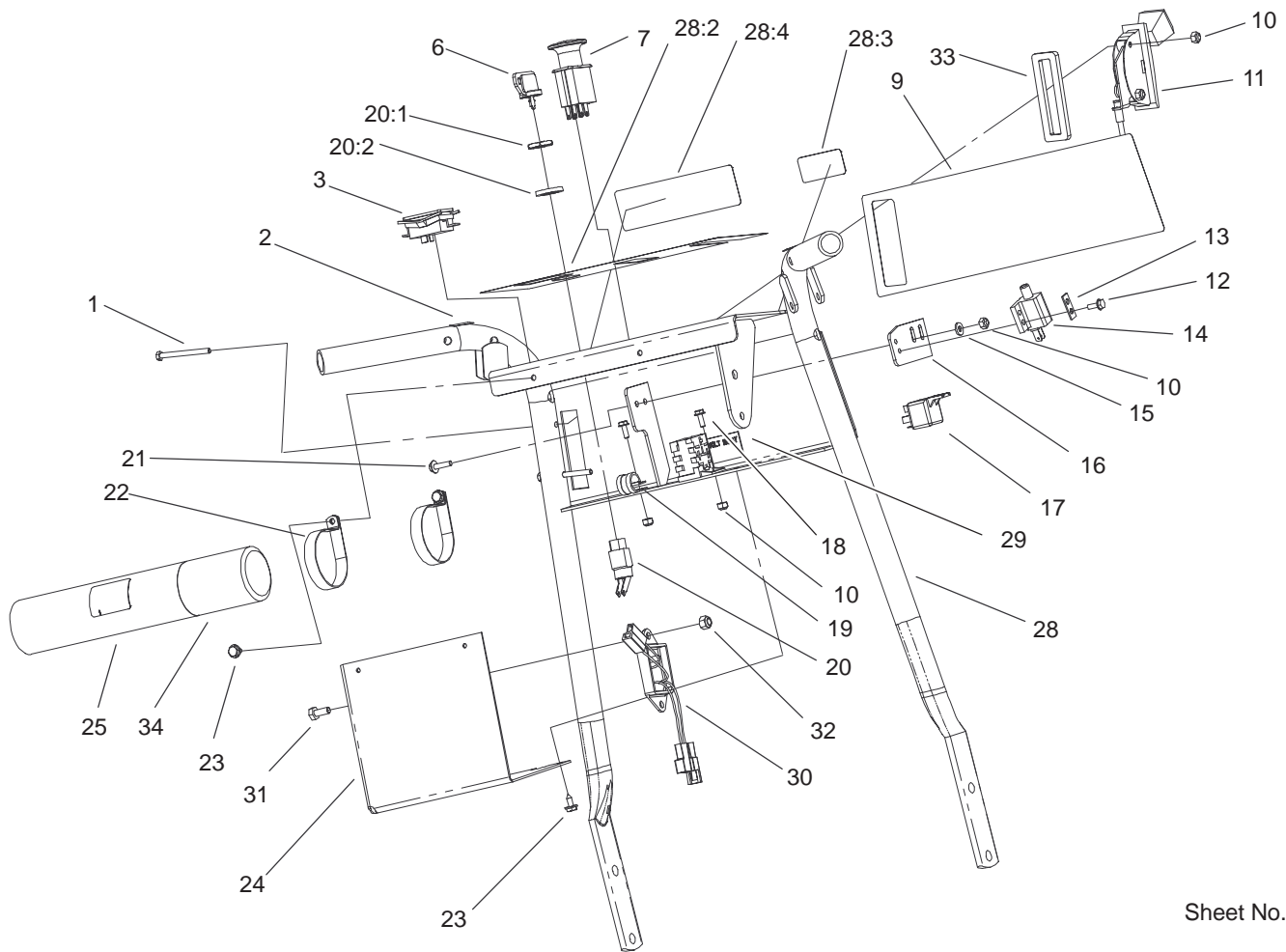
Ref. No.	Part No.	Qty.	Description
24	32128-25	2	Nut-Flange
25	32128-20	14	Nut-HF
26	1-613089	2	Tab-Spring, Extension
27	1-603693	2	Spring-Extension
28	104-9817-01	2	Plate-Side, Hydro
29	322-38	6	Screw-HH
30	322-3	4	Screw-HH
31	1-633102	2	Bearing-Flange, Side
32	104-9820	6	Spacer-Shield
33	302-5	2	Fitting-Grease
34	103-1235	2	Swivel-Lever, Drive
35	106-5480	1	LH Control Arm ASM
36	32151-47	2	Ring-Retaining
37	3246-3	4	Screw-HS
38	3230-2	4	Bolt-CARR
39	322-4	2	Screw-HH
40	106-5539-01	1	Bracket-Neutral
41	95-1653	1	Switch-Pole, Single
42	3256-1	2	Washer-Flat
43	32144-4	2	Screw-HWH
44	82-4570	1	Plate-Switch
45	32144-1	2	Screw-Taprite
46	105-3163-01	1	Crank Support ASM
47	3256-24	2	Washer-Flat
48	322-6	4	Screw-HH



Sheet No.: 8

Upper Handle Assembly

Ref. No.	Part No.	Qty.	Description	Ref. No.	Part No.	Qty.	Description
1	1-413219	2	Rod-Lever, Drive	26	106-5481	1	Latch-Thumb, RH
2	3234-11	2	Screw-HHF	27	1-303363	1	Spring-Extension
3	3234-24	2	Screw-HHF	28	103-0219	1	RH Drive Lever ASM
4	32128-21	4	Nut-HF	28:2	1-413152	2	Sleeve-Bushing
5	106-5534	1	Rod-Speed Control	29	322-11	2	Screw-HH
6	3290-307	3	Pin-Hair	30	321-3	2	Screw-HH
7	1-323245	2	Spring-Compression	31	104-9803	1	Rod ASM
8	3296-29	2	Nut-Lock, NI	32	106-5486	1	RH Opc Lever ASM
9	233-42	1	Knob	33	32128-33	2	Nut-HF
10	106-2748	1	Lever-Shift	34	1-603730	1	Plate-Lever, Shifter
11	3290-378	3	Tie-Cable	35	1-603716	1	Washer-Friction
12	1-603749	2	Bushing-Lever, Drive	36	1-323244	2	Washer-Friction
13	1-613055	2	Pin-Clevis	37	3256-23	1	Washer-Flat
14	103-0218	1	LH Drive Lever ASM				
14:2	1-413152	2	Sleeve-Bushing				
15	1-303365	2	Bushing-Nylon				
16	1-803322	2	Screw-Set				
17	106-5485	1	LH Opc Lever ASM				
18	321-9	2	Screw-HH				
19	3296-42	2	Nut-Lock, NI				
20	104-9838	2	Grip-Foam				
21	32128-33	2	Nut-HF				
22	3256-2	2	Washer-Flat				
23	1-303435	6	Washer-Spring				
24	106-5483	1	Latch-Thumb, LH				
25	321-10	2	Screw-HH				

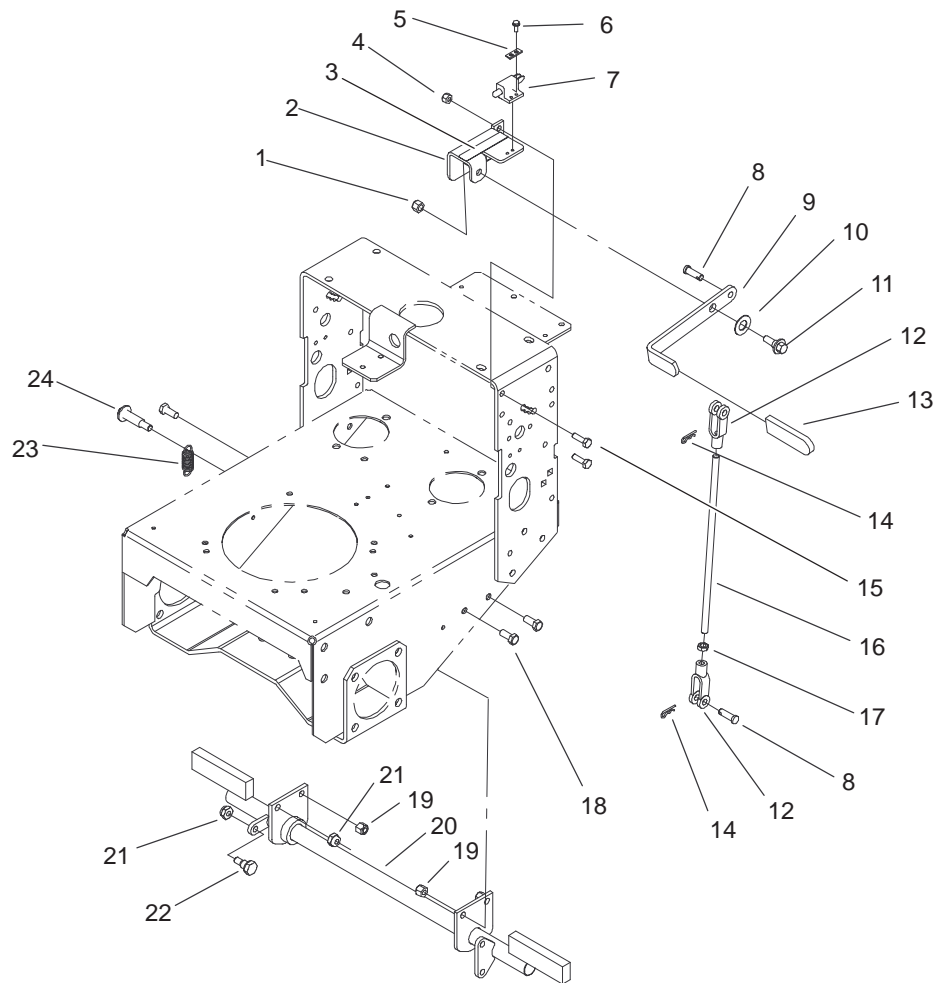


Sheet No.: 9

Control Panel Assembly

Ref. No.	Part No.	Qty.	Description
1	32105-14	2	Screw
2	105-4110	2	Decal-Lock, Neutral
3	104-8143	1	Hourmeter
6	63-8360	1	Key-Ignition
7	95-7489	1	Switch-PTO
9	106-5501	1	Decal-Control, Throttle
10	3296-2	6	Nut-Lock
11	105-4113	1	Control-Throttle
12	32144-1	2	Screw-Taptite
13	82-4570	1	Plate-Switch
14	95-1653	1	Switch-Pole, Single
15	3256-14	2	Washer-Flat
16	105-4137-03	1	Plate-Mounting, Switch
17	105-4145	1	Relay
18	3290-321	2	Screw-HWH
19	2412-134	1	R-Clamp
20	29-5560	1	Switch-On/Off
20:1	218-461	1	Nut-HH
20:2	3254-5	1	Washer-Tooth
21	32105-13	2	Screw-SHH
22	2412-120	2	R-Clamp
23	32104-76	4	Screw
24	105-4112-03	1	Bracket-Cover
25	104-7050	1	Housing-Manual

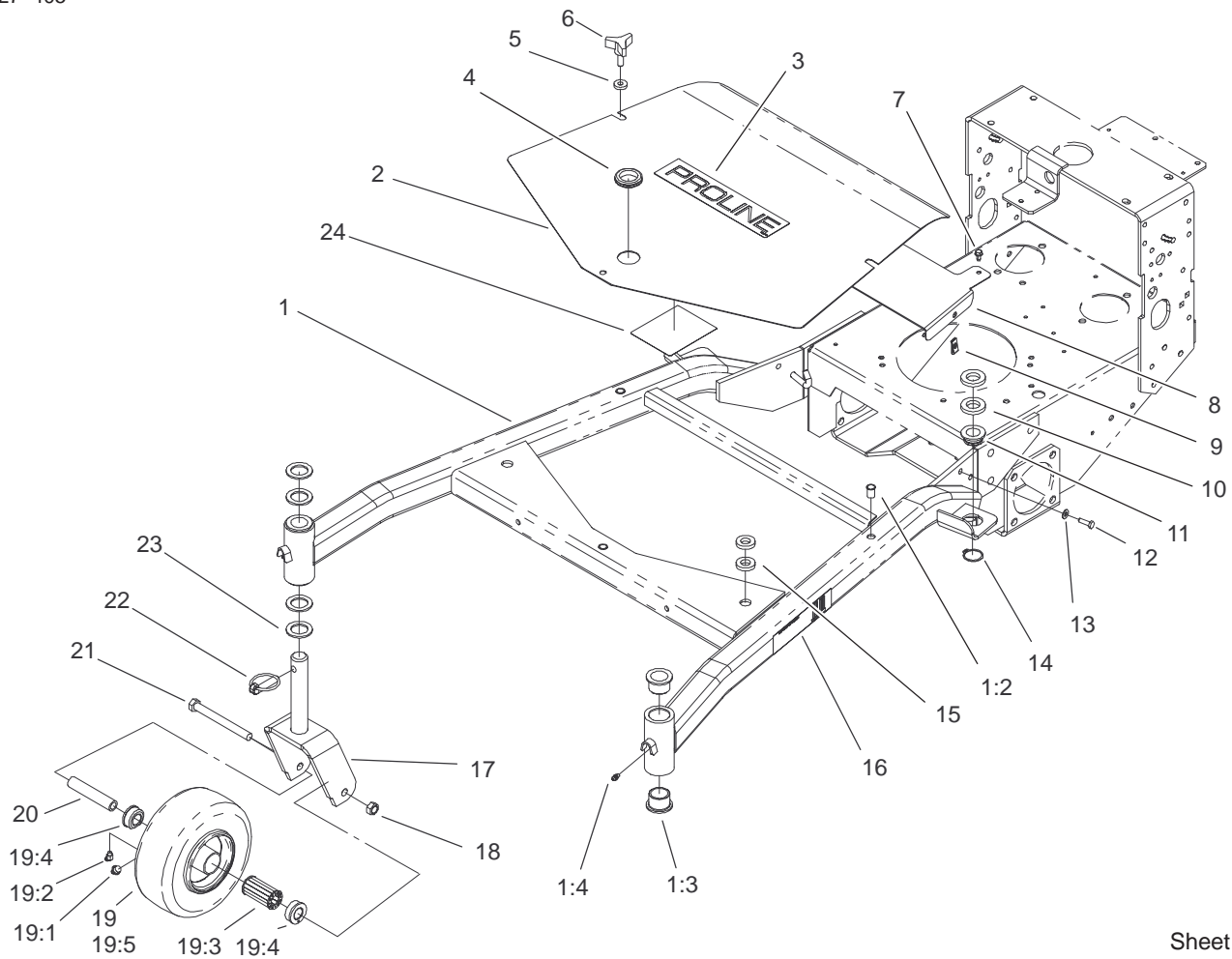
Ref. No.	Part No.	Qty.	Description
28	105-3175	1	Handle ASM
28:2	106-5515	1	Decal-Panel, Control
28:3	98-4387	1	Decal-Protection, Ear
28:4	82-4590	1	Decal-Warning
29	105-4146	1	Decal-Relay, 24 Volt
30	105-4608	1	Module-Filter
31	321-3	2	Screw-HH
32	3296-42	2	Nut-Lock, NI
33	106-5487	1	Gasket-Throttle
34	104-7048	1	Cap-Housing



Sheet No.: 11

Parking Brake Assembly

Ref. No.	Part No.	Qty.	Description	Ref. No.	Part No.	Qty.	Description
1	3296-6	1	Nut-Lock, NI				
2	106-0666-01	1	Brake Handle Support ASM				
3	104-2838	1	Decal-Brake				
4	3296-29	2	Nut-Lock, NI				
5	82-4570	1	Plate-Switch				
6	32144-1	2	Screw-Taptite				
7	65-7410	1	Switch-Pole, Single				
8	1-808285	2	Pin-Clevis				
9	106-0671-01	1	Handle-Brake				
10	257-7	1	Bearing-Thrust				
11	93-2364	1	Bolt-Shoulder				
12	1-633131	2	Yoke-Linkage, Brake				
13	1-303020	1	Grip-Lever				
14	3290-307	2	Pin-Hair				
15	322-5	2	Screw-HH				
16	106-0670	1	Rod-Connecting, Brake				
17	3220-3	1	Nut-Jam				
18	323-5	3	Screw-HH				
19	3296-39	3	Nut-Lock, NI				
20	106-0660-01	1	Parking Brake ASM				
21	3296-44	2	Nut-Lock, NI				
22	27-5240	1	Bolt-Shoulder				
23	613386	1	Spring-Brake				
24	56-6590	1	Bolt-Wheel				

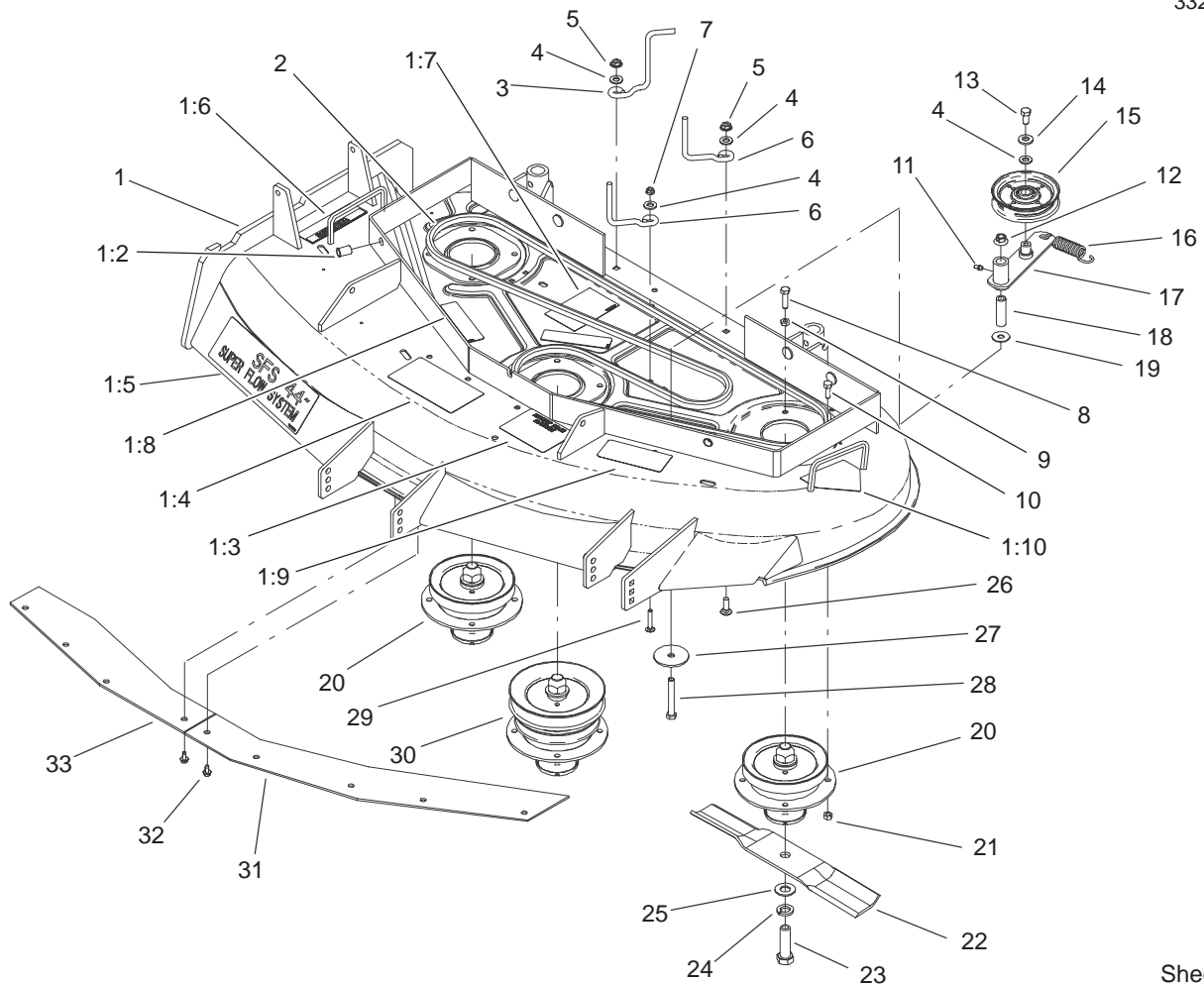


Sheet No.:2

Carrier Frame Assembly

Ref. No.	Part No.	Qty.	Description
1	106-0707	1	Carrier Frame ASM
1:2	32148-9	3	Insert-Nut
1:3	94-1291	4	Bushing-Special
1:4	302-5	2	Fitting-Grease
2	106-0537-01	1	Cover
3	106-0719	1	Decal
4	240-3	1	Grommet-Rubber
5	106-0565	3	Washer-Rubber
6	104-8587	3	Knob
7	12-3270	2	Screw
8	105-9389-01	1	Shield-Heat
9	3290-199	2	Nut-Speed
10	104-1105	4	Spacer-Support, Deck
11	1-513336	2	Bushing-Deck
12	321-5	2	Screw-HH
13	3256-22	2	Washer-Flat
14	32120-33	2	Ring-Retaining
15	105-0842	4	Spacer
16	106-0635	2	Decal-HOC
17	105-3159-01	2	Castor Fork ASM
18	32153-5	2	Nut-Lock
19	100-6451	2	Castor Wheel ASM
19:1	232-27	1	Stem-Valve
19:2	302-11	1	Fitting-Lube, 45°
19:3	83-4740	1	Bearing
19:4	62-5580	2	Bearing-Outside

Ref. No.	Part No.	Qty.	Description
19:5	100-6452	1	Tire-Tubeless
20	100-6453	2	Bushing-Spanner
21	325-19	2	Screw-HH
22	283-71	2	Pin-Lynch
23	3-6781	8	Washer-Thrust
24	106-5503	1	Decal-Service, Hydro Tbar
24	106-5505	1	Decal-Service, Gear Tbar
24	106-5511	1	Decal-Service, Gear Pistol Grip
24	106-5513	1	Decal-Service, Hydro Pistol Grip

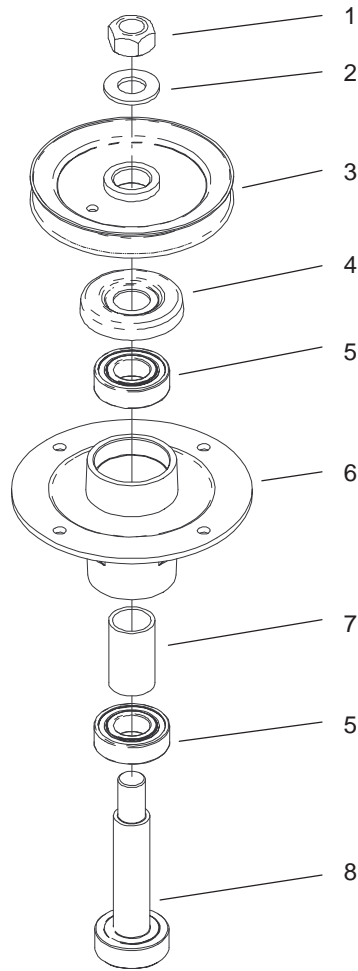


Sheet No.:3

Spindle, Pulley and Belt Assembly

Ref. No.	Part No.	Qty.	Description
1	106-0617	1	Deck ASM
1:2	32148-10	2	Insert-Threaded
1:3	106-5532	1	Decal-Antiscalp
1:4	66-1340	1	Decal-Danger
1:5	106-0704	1	Decal
1:6	104-8569	1	Decal-Warning
1:7	104-8186	1	Decal-Routing, Belt
1:8	67-5360	3	Decal-Danger
1:9	68-8340	1	Decal-Torque
1:10	43-8480	1	Decal-Danger
2	27-1160	1	V-Belt
3	106-5488	1	Guide-Belt
4	3256-24	4	Washer-Flat
5	32128-13	2	Nut-HF
6	52-4780	2	Rod-Belt
7	32128-10	1	Locknut-Flange
8	322-6	1	Screw-HH
9	3218-2	1	Nut-Jam
10	322-4	11	Screw-HH
11	302-19	1	Fitting-Grease
12	32128-19	1	Nut-HF
13	323-4	1	Screw-HH
14	98-5975	1	Washer-Belleville
15	65-5940	1	Pulley-Idler
16	54-2730	1	Spring-Extension
17	104-8110	1	Idler Arm ASM

Ref. No.	Part No.	Qty.	Description
18	104-8113	1	Tube-Idler
19	52-2860	1	Washer
20	106-0786	2	Spindle Housing ASM
21	32152-1	12	Nut-Lock, NI
22	54-0010	3	Blade
23	51-4060	3	Screw-Blade
24	3253-8	3	Washer-Lock
25	3256-27	3	Washer-Flat
26	3230-2	2	Bolt-CARR
27	20-9530	1	Washer-End
28	323-13	1	Screw-HH
29	3229-4	1	Screw-CARR
30	106-0784	1	Spindle Housing ASM
31	100-3258-03	1	Plate-Blowout, LH
32	12-3270	9	Screw
33	100-3257-03	1	Plate-Blowout, RH

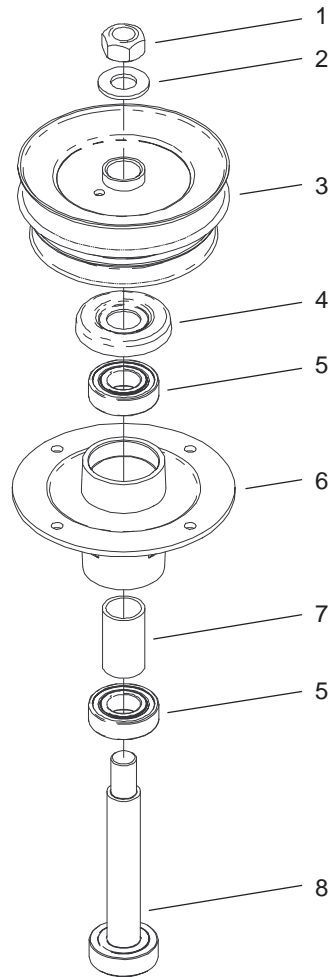


Sheet No.:A1

Spindle Assembly No. 106-0786

Ref. No.	Part No.	Qty.	Description
1	3219-7	1	Nut-Hex
2	7-4150	1	Washer
3	104-1181	1	Pulley ASM
4	106-0873	1	Shield-Bearing
5	104-6325	2	Bearing
6	106-0818	1	Housing-Spindle
7	106-0794	1	Spacer-Bearing
8	106-0780	1	Shaft-Spindle

Ref. No.	Part No.	Qty.	Description

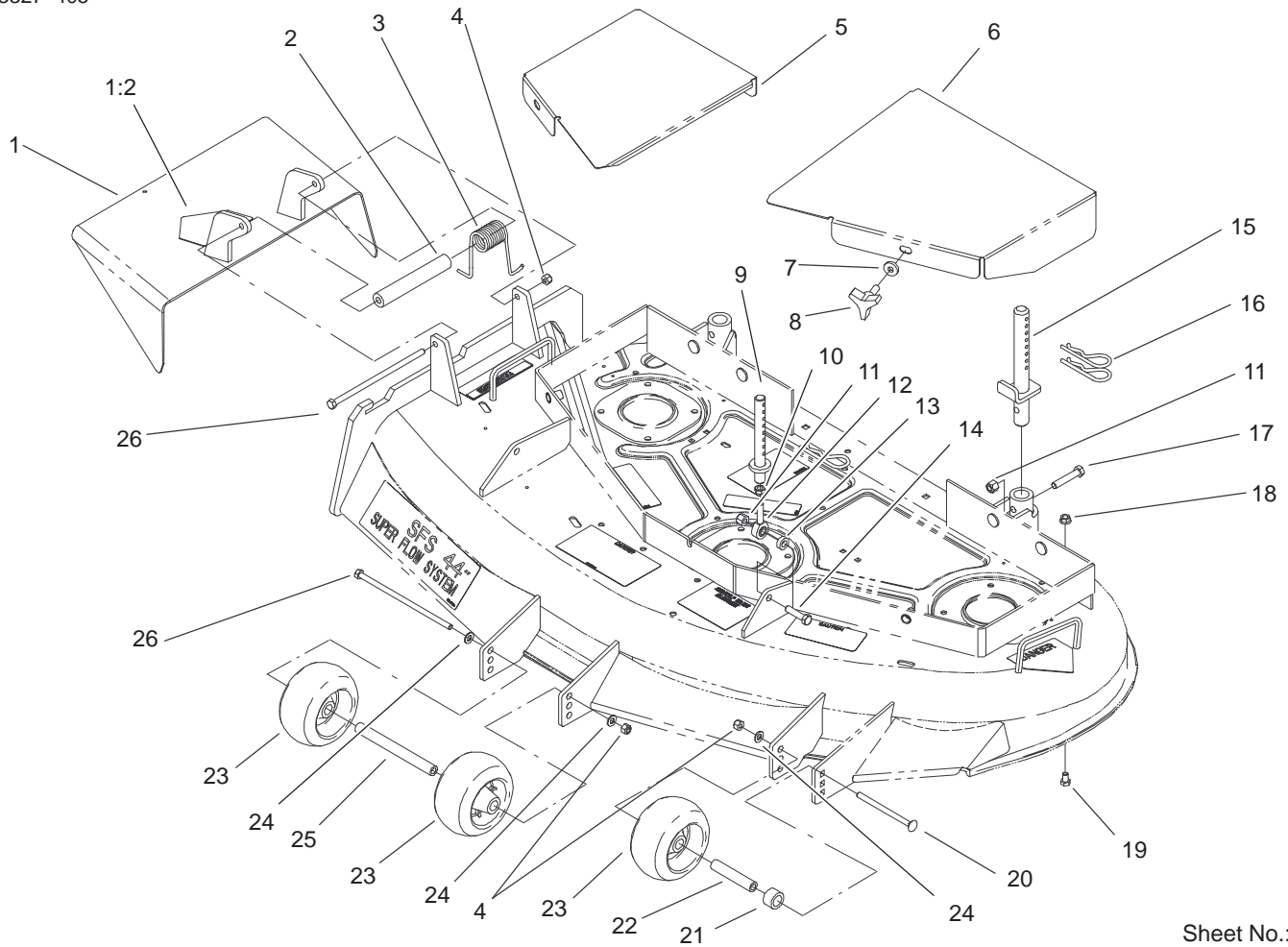


Sheet No.:A2

Spindle Assembly No. 106-0784

Ref. No.	Part No.	Qty.	Description
1	3219-7	1	Nut-Hex
2	7-4150	1	Washer
3	104-1116	1	Pulley And Hub ASM
4	106-0873	1	Shield-Bearing
5	104-6325	2	Bearing
6	106-0818	1	Housing-Spindle
7	106-0794	1	Spacer-Bearing
8	106-0779	1	Shaft-Spindle

Ref. No.	Part No.	Qty.	Description



Sheet No.:4

Deck Assembly

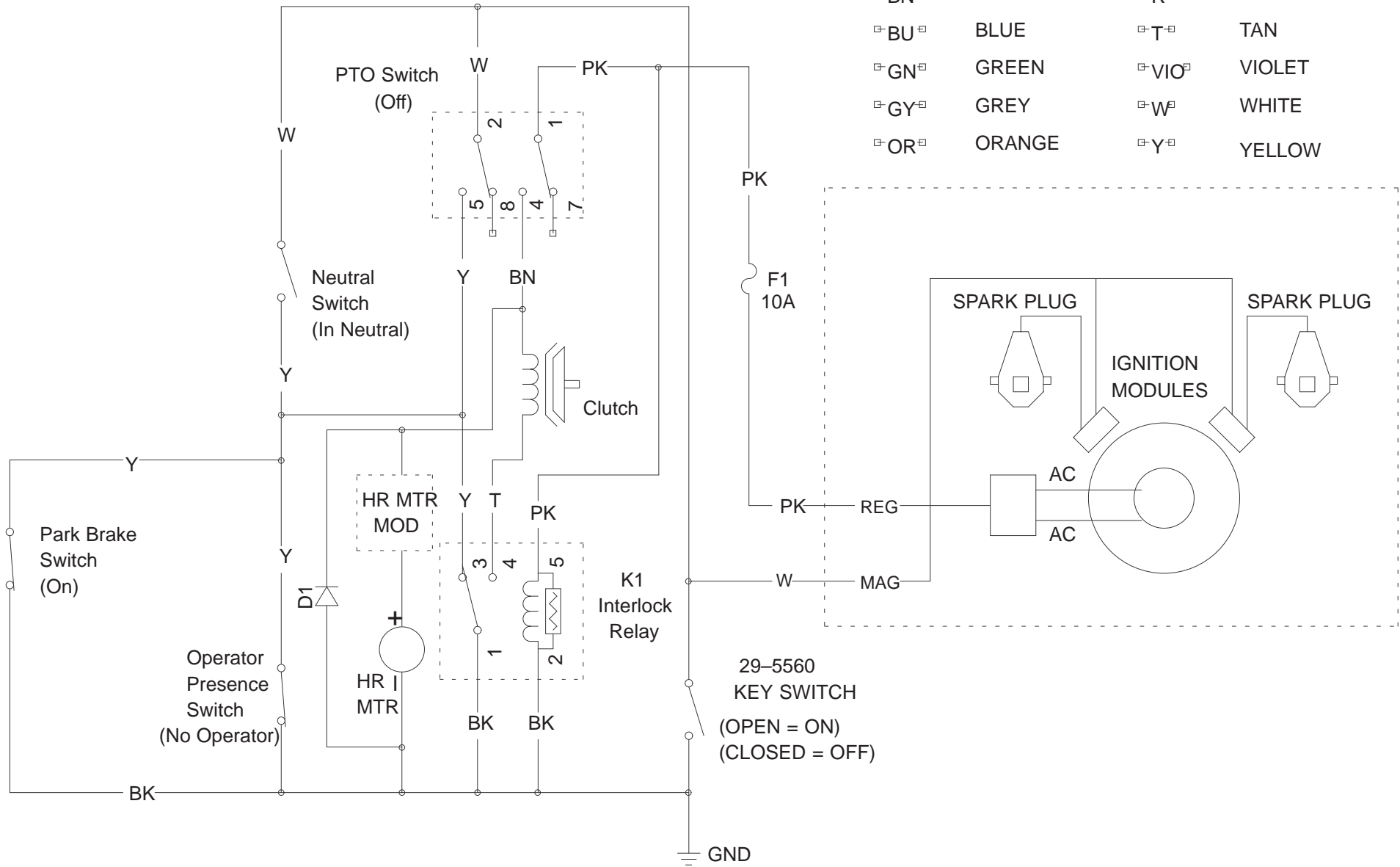
Ref. No.	Part No.	Qty.	Description
1	105-4625	1	Deflector ASM
1:2	93-1122	1	Decal-Danger
2	105-4622	1	Spacer
3	104-8554	1	Spring-Torsion
4	3296-29	3	Nut-Lock, NI
5	106-3363-01	1	Cover-Belt, RH
6	106-3362-01	1	Cover-Belt, LH
7	106-0565	2	Washer-Rubber
8	104-8587	2	Knob
9	106-0684	2	Front Pin ASM
10	3220-3	2	Nut-Jam
11	3296-39	4	Nut-Lock, NI
12	1-613204	2	Balljoint
13	104-1156	2	Spacer
14	323-8	2	Screw-HH
15	106-3365	2	Rear Pin ASM
16	3290-256	6	Pin-Hair
17	323-10	2	Screw-HH
18	32128-20	4	Nut-HF
19	322-1	4	Screw-HH
20	3230-30	1	Screw-CARR
21	106-0563	1	Spacer-Wheel
22	106-0545	1	Bushing-Roller
23	68-2730	3	Wheel-Gage
24	3256-23	3	Washer-Flat

Ref. No.	Part No.	Qty.	Description
25	98-5967	1	Spacer
26	322-50	2	Screw-HH

Electrical Schematic

WIRE COLOR CODES

□BK□	BLACK	□PK□	PINK
□BN□	BROWN	□R□	RED
□BU□	BLUE	□T□	TAN
□GN□	GREEN	□VIO□	VIOLET
□GY□	GREY	□W□	WHITE
□OR□	ORANGE	□Y□	YELLOW



Hydraulic Schematic

