



# Update Kit

## Workman® 2100 Utility Vehicle

Part No. 99-7019

Form No. 3327-416

### Installation Instructions

Position the machine on a level surface, stop the engine, and remove the key.



#### Caution



**If you leave the key in the ignition switch, someone could accidentally start the engine and seriously injure you or other bystanders.**

**Remove the key from the ignition switch before you do any maintenance.**

## Replacing the Hood and Updating the Steering Column

1. Remove the old hood.
2. Remove headlights and the rubber seals around each light; refer to the *Service Manual* for instructions.
3. Remove the steering wheel (Fig. 1).
4. Remove the dash.
5. Remove the steering column and all hardware from the steering shaft (Fig. 1).

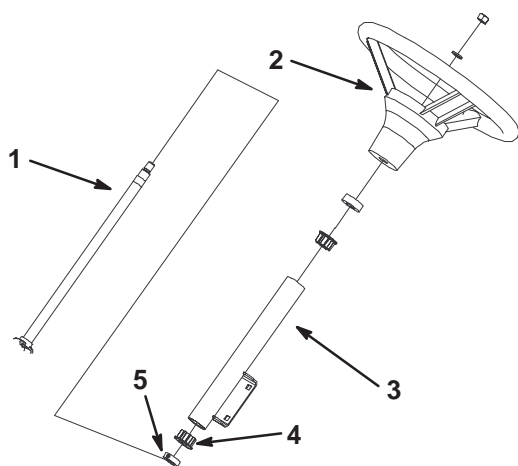


Figure 1

- |                    |                    |
|--------------------|--------------------|
| 1. Steering shaft  | 4. Plastic bushing |
| 2. Steering wheel  | 5. Collar          |
| 3. Steering column |                    |

6. Slide the collar from the kit onto the steering shaft (Fig. 1).

7. Install the steering column as illustrated in Figure 1.
8. Slide the collar up against the plastic bushing and tighten the set screw to secure it in place (Fig. 1).
9. Install the dash.
10. Install the steering wheel.
11. Install the lights and rubber seals into the new hood.

**Note:** Use soapy water on the lights and seals to aid in installing them.

12. Install the new hood.

## Updating the Engine

1. Remove and discard the U-bracket that secures the prop rod to the frame (Fig. 2).

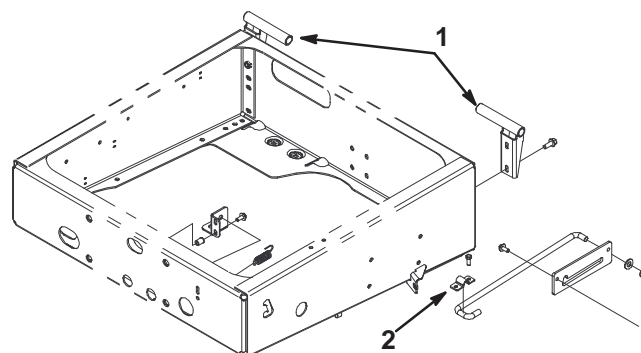
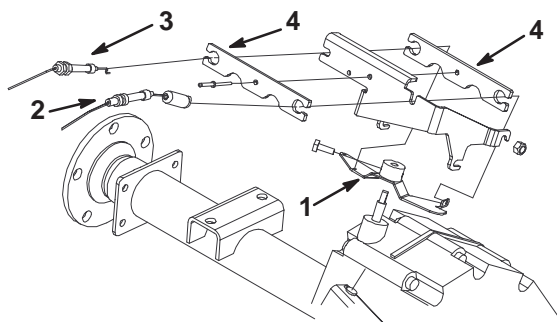


Figure 2

- |                   |                       |
|-------------------|-----------------------|
| 1. Pivot brackets | 2. Prop rod U-bracket |
|-------------------|-----------------------|

2. Remove the two pivot brackets from the frame and box, removing the box (Fig. 2).
3. Remove the current carburetor assembly and replace it with the new carburetor.
4. Secure all carburetor components to the following torque specifications:
  - Blower housing M8: 150 in.-lb.
  - Blower housing M6: 60 in.-lb.
  - Intake to cylinder head: 150 in.-lb.
  - Carburetor to intake manifold: 80 in.-lb.
  - Rotating screen to flywheel: 40 in.-lb.

5. Replace the governor bracket (Fig. 3), discarding the old governor bracket and the spring connected to it.



**Figure 3**

- |                      |                                 |
|----------------------|---------------------------------|
| 1. Governor bracket  | 3. Throttle cable to carburetor |
| 2. Accelerator cable | 4. Security bracket             |

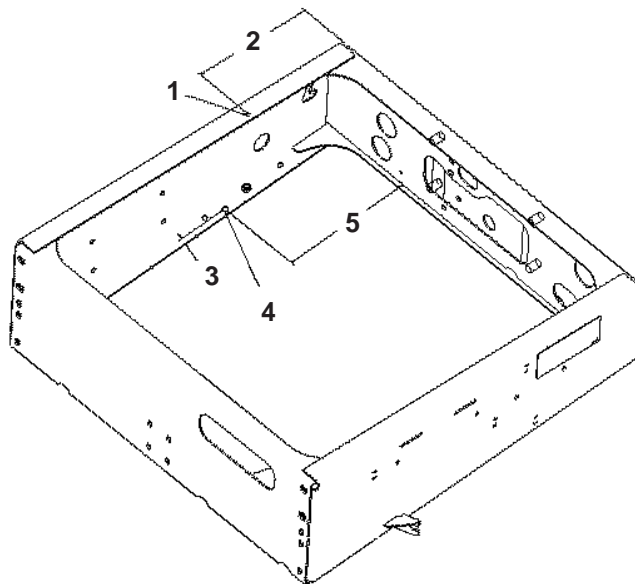
6. Replace the accelerator cable (cable which runs from the accelerator pedal to the governor bracket) (Fig. 3).

**Note:** To replace the accelerator cable, you will need to drill out the rivet securing the tamper proof bracket. When finished, secure the bracket with a new rivet (Fig. 3).

7. Replace and adjust the accelerator and brake pedals; refer to 3327–218, *Replacement Pedal Kit Installation Instructions* for more information.
8. Adjust the throttle cable (cable running from the governor bracket to the carburetor) as follows (Fig. 3):
  - A. Turn the governor bracket as far as possible counterclockwise and hold it (Fig. 3).
  - B. Adjust the cable to have free play at the carburetor, ensuring that the throttle cable spring at the governor bracket has no tension (Fig. 3).

9. Remove the exhaust system from the engine manifold back through the muffler.

10. Enlarge the rear hole from which you removed the prop rod U-bracket to 15/32 in. dia. (Fig. 4).

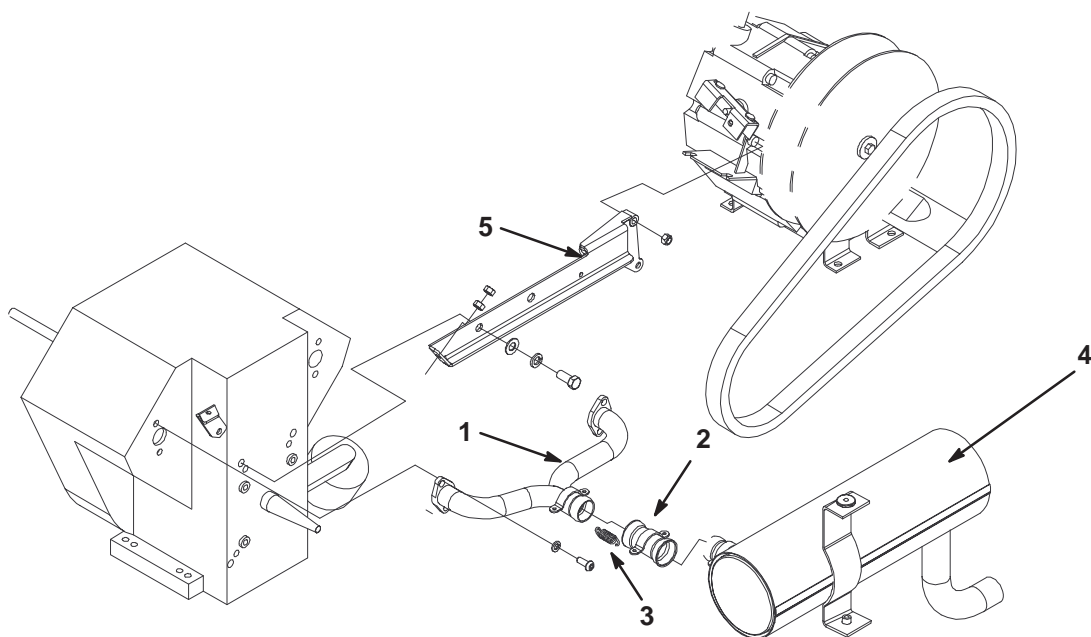


**Figure 4**

- |                      |                         |
|----------------------|-------------------------|
| 1. 15/32 in. dia.    | 4. 15/32 in. dia.       |
| 2. 12 in. (30.5 cm)  | 5. 10-21/32 in. (27 cm) |
| 3. 1/2 in. (1.25 cm) |                         |

11. Drill a 15/32 in. dia. hole through the frame at the location illustrated in Figure 4.

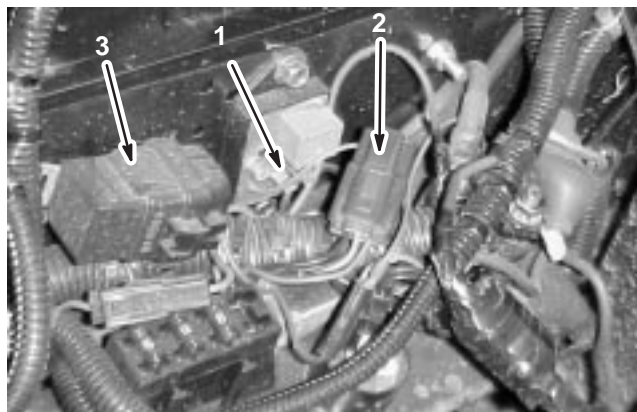
12. Install the new exhaust manifold, exhaust coupler, springs, and muffler, ensuring that you align the exhaust manifold gaskets correctly (Fig. 5).



**Figure 5**

- |                     |                             |            |               |
|---------------------|-----------------------------|------------|---------------|
| 1. Exhaust manifold | 3. Springs (only one shown) | 4. Muffler | 5. Torque arm |
| 2. Exhaust coupler  |                             |            |               |

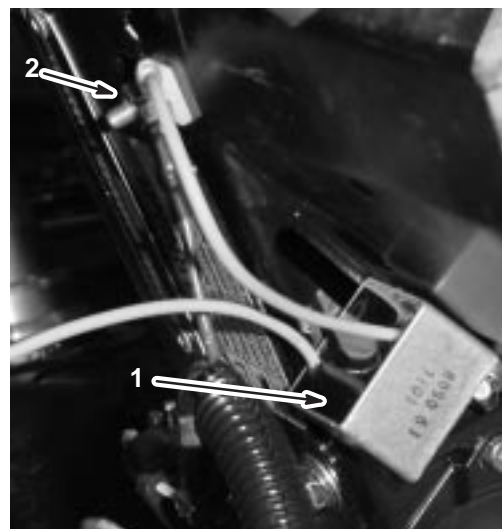
**13.** Disconnect the brown connector from the old module in the right side of the frame and insert a dead connector into the brown connector to seal it off (Fig. 6).



**Figure 6**

- |  |          |
|--|----------|
| 1. Old module                                    | 3. Relay |
| 2. Brown connector with dead connector installed |          |

**14.** Install the new gray module on the side of the engine towards the front of the engine compartment as illustrated in Figure 7.

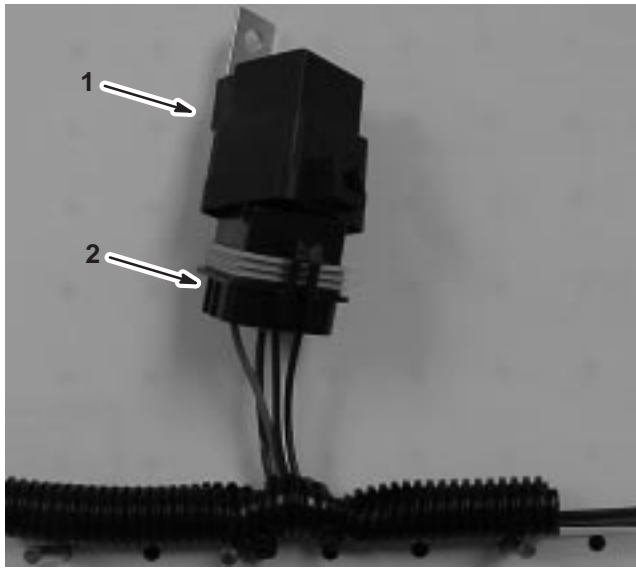


**Figure 7**

- |               |   |
|---------------|---|
| 1. New module | 2. Gray lead connected to the ignition kill magneto |
|---------------|---|

**15.** Install the gray lead from the module with the ring terminal to the magneto kill terminal on top of the brown wire already there (Fig. 7).

**16.** Unplug the relay connector from the relay (Fig. 8).



**Figure 8**

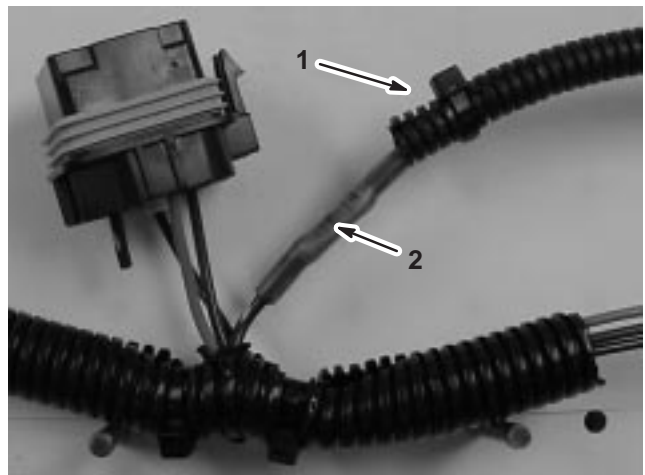
1. Relay                      2. Relay connector

**17.** Cut and strip the brown wire with the white stripe from the bottom of the relay connector (Fig. 9).



**Figure 9**

**18.** Splice the brown wire with the white stripe with the end of the long harness supplied in this kit, using a heat shrink tube to seal them together (Fig. 10).

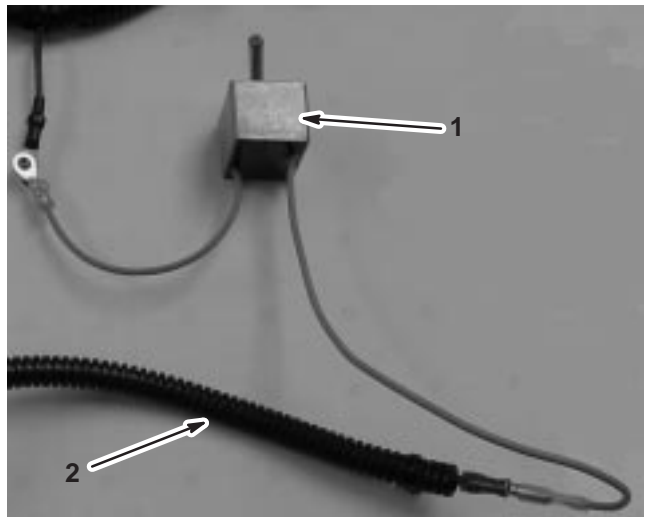


**Figure 10**

1. Long wire harness                      2. Heat-shrink connection

**19.** Plug the relay connector into the relay.

**20.** Connect the end of the long wire harness to the other lead on the new gray module (Fig. 11).



**Figure 11**

1. New gray module                      2. Long wire harness

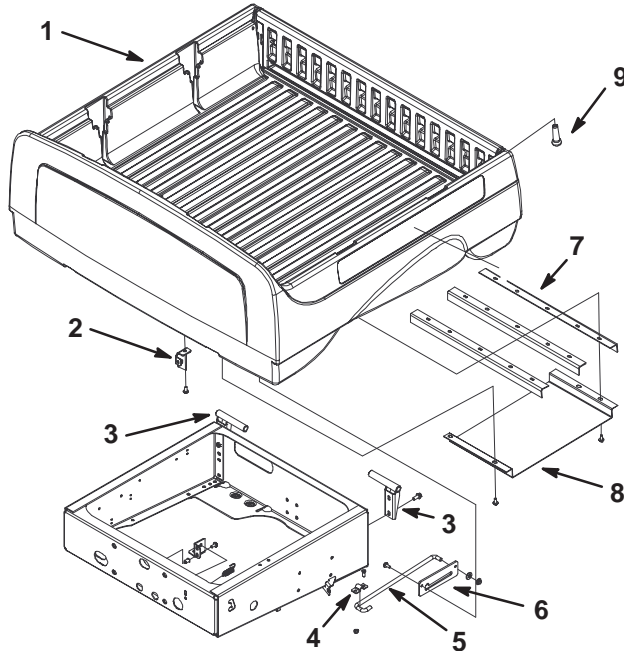
**21.** Set the transaxle speed; refer to the *Service Manual* for instructions.

**22.** Install the torque arm onto the studs on the transaxle assembly and to the back of the engine (Fig. 5).

23. Secure any loose cables in the area to the torque arm with cable ties (Fig. 5).

## Installing the Box

1. Remove the latch assembly from the old box and install it on the new box (Fig. 12).



**Figure 12**

- |                       |                     |
|-----------------------|---------------------|
| 1. Box                | 6. Prop rod bracket |
| 2. Latch assembly     | 7. Braces           |
| 3. Pivot brackets     | 8. Heat shield      |
| 4. Prop rod U-bracket | 9. Rubber knob      |
| 5. Prop rod           |                     |

2. Install the three braces and the heat shield to the bottom of the box in the orientation illustrated in Figure 12.

**Note:** In the center brace, use only the outside and center holes. In the other braces, use the right holes and the holes that line up with the heat shield.

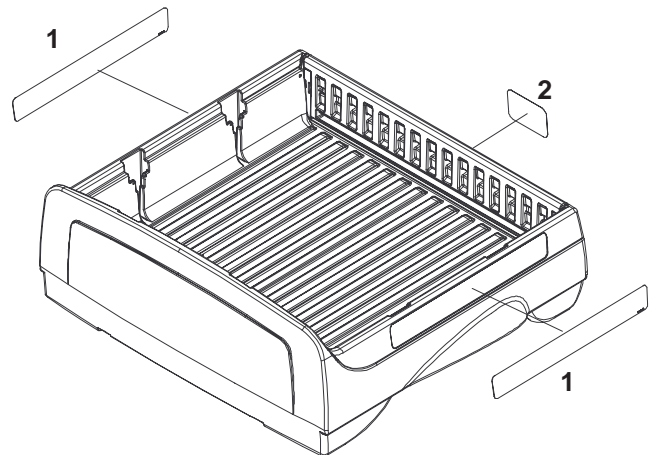
3. Using the U-bracket as a template, line the bracket with the edge of the frame and over the front hole where the old U-bracket had been installed, marking the location of the new front hole (Fig. 12).
4. Drill an 11/32 in. dia. hole at the marked location.
5. Install the prop rod bracket to the underside of the box (Fig. 12).

6. Using a washer and pushnut, install the prop rod to the slot in the prop rod bracket (Fig. 12).
7. Lay the box on the frame ensuring that it is centered correctly and lays flat.
8. Install the 2 new pivot brackets to the box and frame (Fig. 12).
9. Connect the prop rod to the frame using the U-bracket (Fig. 12).
10. Slide the rubber knobs onto the tailgate latches (Fig. 12).

**Note:** Use soapy water on the latches to aid in installing the rubber knobs.

## Installing the Decals and the Serial Plate

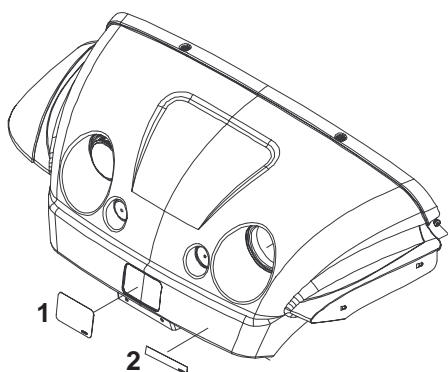
1. Install the decals in the positions indicated in Figures 13, 14, and 15.
  - A. Thoroughly clean the area where you will install the decal.
  - B. Dampen the area with water or mildly soapy water.
  - C. Peel the decal from the backing and install it in place.
  - D. Apply pressure across the surface of the decal, starting at the center of the decal and working toward the edges using overlapping strokes.



**Figure 13**

1. 99-7959

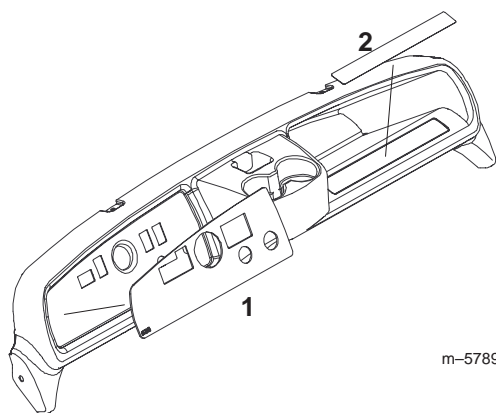
2. 99-7337



**Figure 14**

1. 99-7339

2. 99-7338



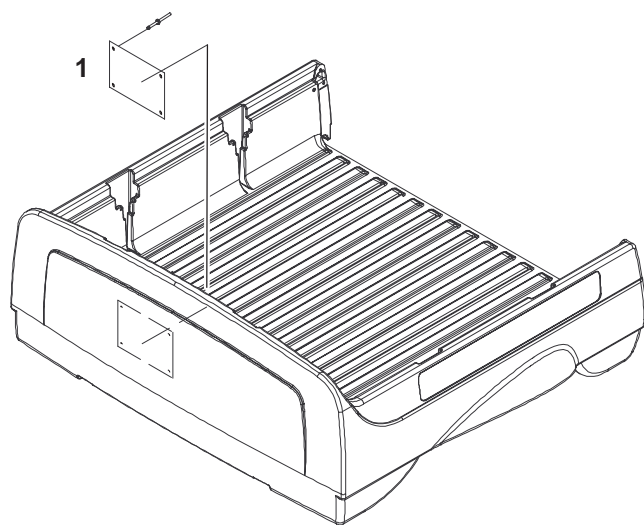
m-5789

**Figure 15**

1. 99-7343

2. 99-7344

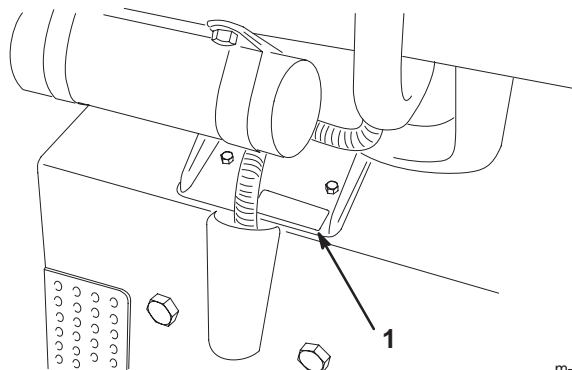
2. Install the warning plate (99-7954) in the box using 4 pop rivets as illustrated in Figure 16.



**Figure 16**

1. 99-7954

3. Drill out the rivets securing the old serial plate and remove the plate (Fig. 17).



m-5312

**Figure 17**

1. Serial plate

4. Install the new serial plate (99-7359) using 2 pop rivets in the location of the old plate.



