



## Mid-Size Mower

### ProLine Gear with 48" Side Discharge Mower

Model No. 30196-22000001 and Up

## Parts Catalog

### Ordering Replacement Parts

To order replacement parts, please supply: the part number, the quantity, and the description of each part desired.

### Understanding Reference Numbers

Each identified part in an illustration has a reference number. The reference number for a part also appears in the parts list, along with other information about the part.

This catalog uses two special reference number formats, one to indicate parts in a service assembly and another to indicate the quantity of a given part in an illustration.

### Service Assembly Reference Numbers

Parts in service assemblies have reference numbers in the form **a:b**. The **a** represents the reference number of the entire service assembly and the **b** represents a sequential number unique to each part within the service assembly.

For example, a wheel assembly might be identified by reference number **6**, the tire by **6:1**, the valve by **6:2**, and the wheel by **6:3**. When you order the assembly identified by reference number **6**, you receive all parts identified by reference numbers **6:1**, **6:2**, and **6:3**. However, you may also order any part individually.

Reference numbers of this type appear in illustrations and in part lists.

### Reference Numbers Indicating Quantity

In an illustration, if a reference number indicates more than one part, the reference number has the form **nX y**. The **n** represents the quantity of the part, the **X** is the multiplication symbol, and the **y** represents the reference number.

For example, in an illustration, the reference number **2X 37** means that two of the parts identified by reference number **37** are indicated.

## Contents

Description	Page	Description	Page
Engine and Fuel System Assembly .....	3	Cooling Equipment Assembly	
Transmission and Drive Pulley Assembly .....	4	Kawasaki FC420V-ES15 .....	17
Wheel Drive Assembly .....	6	Electric Equipment Assembly	
Upper Handle Assembly .....	7	Kawasaki FC420V-ES15 .....	18
Front Caster and Blade Brake Assembly .....	8	Control Equipment Assembly	
Spindle Assembly .....	10	Kawasaki FC420V-ES15 .....	19
Idler Pulley Assembly .....	11	Carburetor Assembly	
Deck Assembly .....	12	Kawasaki FC420V-ES15 .....	20
Cylinder/Crankcase Assembly		Air Filter/Muffler Assembly	
Kawasaki FC420V-ES15 .....	13	Kawasaki FC420V-ES15 .....	21
Piston/Crankshaft Assembly		Starter Assembly	
Kawasaki FC420V-ES15 .....	14	Kawasaki FC420V-ES15 .....	22
Valve/Camshaft Assembly		Recoil Starter Assembly	
Kawasaki FC420V-ES15 .....	15	Kawasaki FC420V-ES15 .....	23
Lubrication Equipment Assembly			
Kawasaki FC420V-ES15 .....	16		

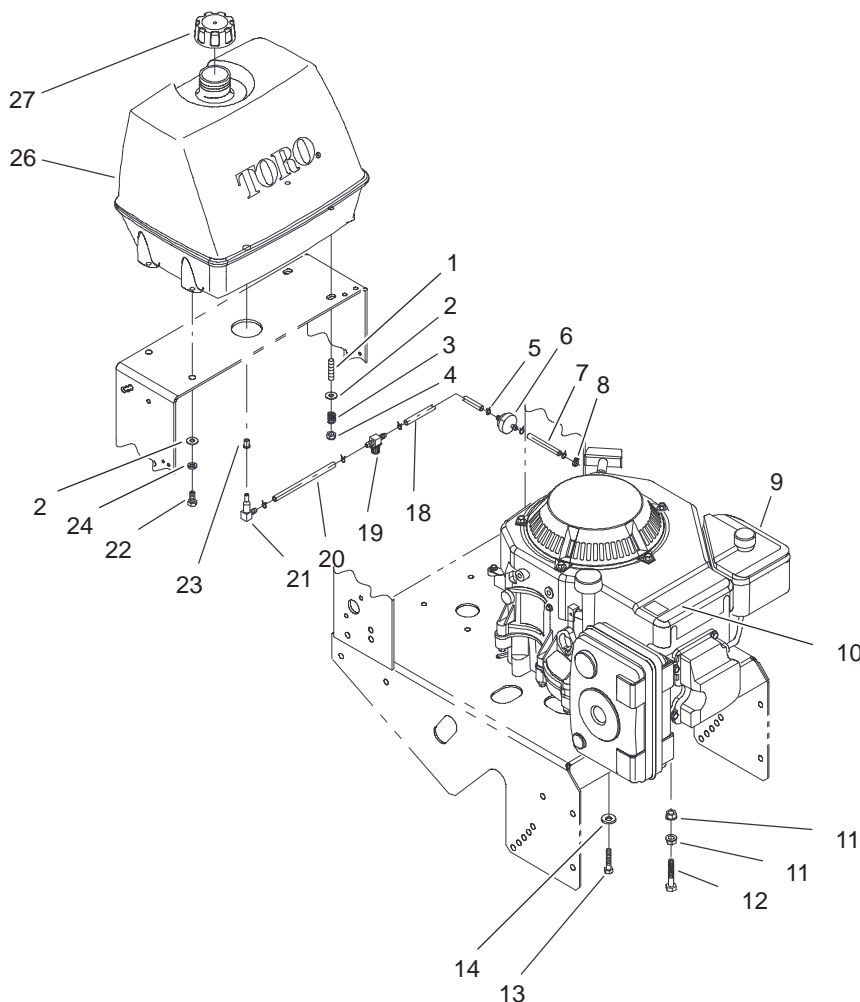
## Accessories

Description	Model / Part No.	Description	Model / Part No.
Recycler Kit .....	30142	Soft Bagger .....	30198

## Part Description Abbreviations

Part descriptions in this catalog may include the following abbreviations.

Abbreviation	Meaning	Abbreviation	Meaning
AR .....	as required	HYD .....	hydraulic
ASM .....	assembly	INC .....	incorporated
CARR .....	carriage	LH .....	left hand
DEG .....	degrees	NI .....	nylon insert
FH .....	flat head	PPH .....	Phillips pan head
GA .....	gauge	PTH .....	Phillips truss head
HF .....	hex flange	PTO .....	power take off
HH .....	hex head	RH .....	right hand
HHF .....	hex head flange	SFH .....	slotted fillister head
HLH .....	hex lag head	SHH .....	slotted hex head
HJ .....	hex jam	SQH .....	square head
HOC .....	height-of-cut	SHWH .....	slotted hex washer head
HS .....	hex socket	SPH .....	slotted pan head
HSBH .....	hex socket button head	SRH .....	slotted round head
HSFH .....	hex socket flat head	STD .....	standard
HSH .....	hex socket head	TAP .....	self tapping
HWH .....	hex washer head	TTH .....	Torx truss head
HWHTF .....	hex washer head thread forming	WH .....	wing head



Sheet No.: 2

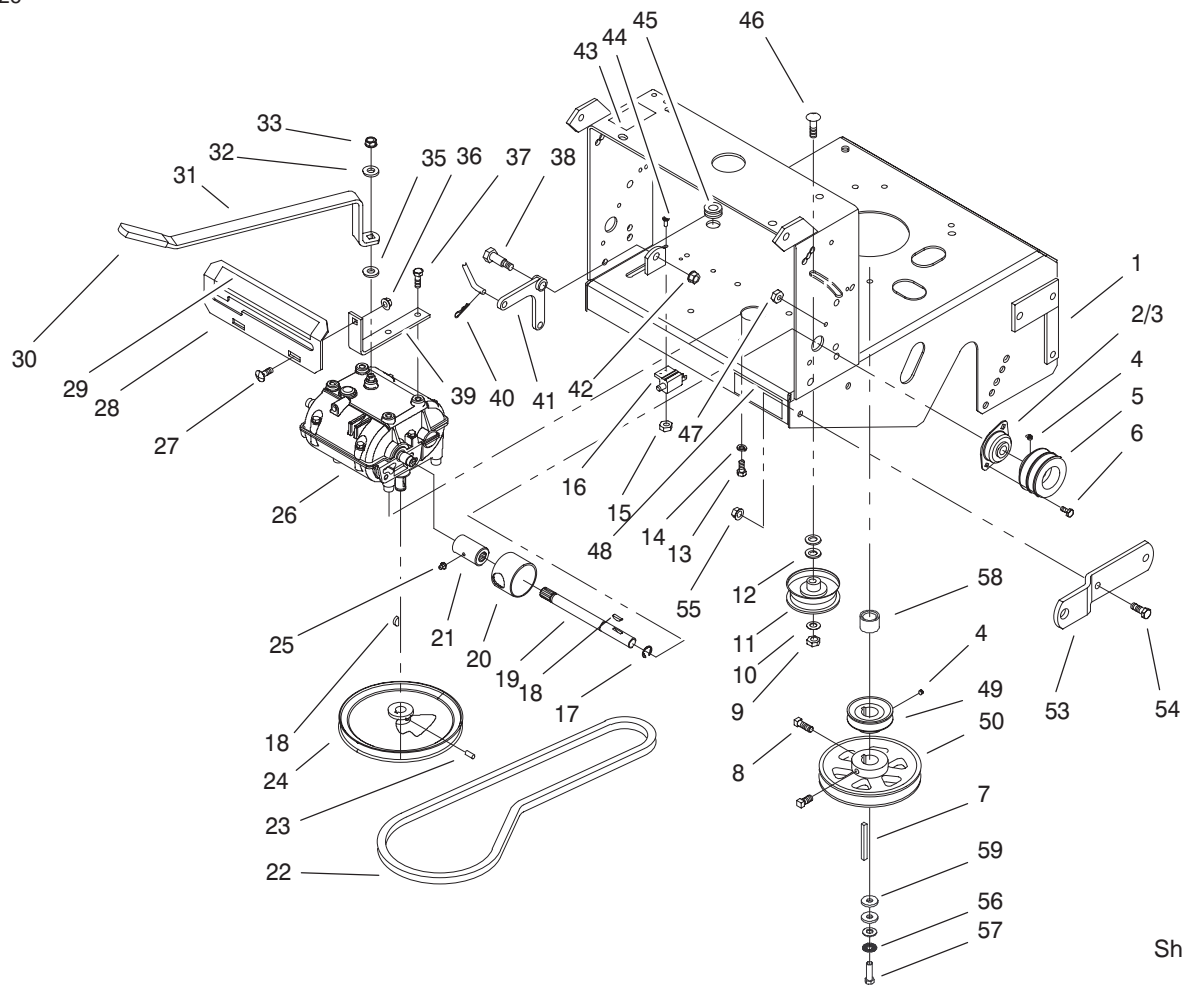
## Engine and Fuel System Assembly

Ref. No.	Part No.	Qty.	Description
1	1-633023	2	Stud
2	3256-23	4	Washer-Flat
3	1-633349	2	Spring-Tank, Fuel
4	3296-47	2	Nut-Lock, NI
5	1-303077	5	Clamp-Line, Fuel
6	1-303197	1	Filter, Fuel
7	1-303471	1	Line-Fuel
8	1-303308	1	Clamp-Hose
☆9		1	Engine-Kawasaki, Fc420v-Es15
10	63-8440	1	Decal-Surface, Hot
11	3290-357	2	Nut-HHF
12	323-13	1	Screw-HH
13	33114-025	4	Screw-HH
14	1-303334	4	Washer-Spring
18	1-603776	1	Hose-Line, Fuel
19	1-603770	1	Valve-Fuel
20	1-603955	1	Hose-Line, Fuel
21	1-543277	1	Elbow-Tank, Fuel
22	322-3	2	Screw-HH
23	1-513645	1	Bushing-Valve, Fuel
24	1-805005	2	Washer-Lock
26	1-323551	1	Tank-Fuel
27	1-513508	1	Cap-Fuel
*99	1-303287	1	Tie-Plastic
*99	1-303335	1	Tie-Plastic

Ref. No.	Part No.	Qty.	Description

☆ Not serviced separately

\* Not illustrated



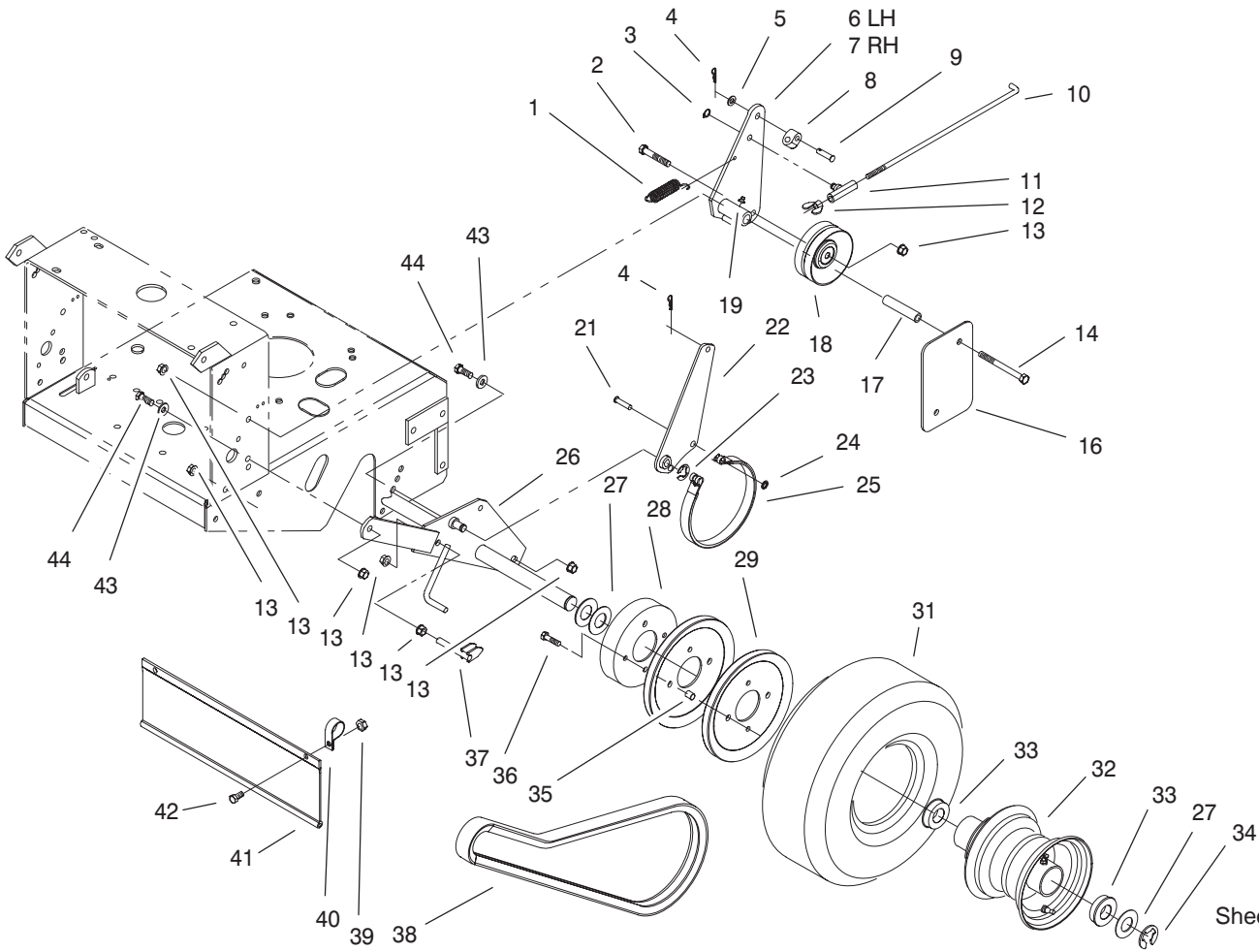
Sheet No.: 3

## Transmission and Drive Pulley Assembly

Ref. No.	Part No.	Qty.	Description
1	1-402112-01	1	Deck-Rear
2	1-323252	2	Bearing-Shaft
3	1-323254	2	Flange-Output
4	1-803310	3	Screw-Set
5	1-323257-03	2	Sheave-Transmission
6	321-3	4	Screw-HH
7	5-1336	1	Key
8	3242-4	2	Screw-Set, SQH
9	3296-39	1	Nut-Lock, NI
10	3256-24	1	Washer-Flat
11	1-323285	1	Idler-Drive, Transmission
12	3256-5	2	Washer-Flat
13	322-3	4	Screw-HH
14	1-805005	4	Washer-Lock
15	3296-2	2	Nut-Lock
16	1-513152	1	Switch-Closed, Normally
17	32151-62	2	Ring-Retaining
18	3257-5	3	Key-Woodruff
19	1-323502	2	Shaft-Transmission
20	51-4220	2	Guard-Coupler
21	1-323680	2	Coupler
22	1-323630	1	V-Belt
23	3245-41	2	Screw-HSH
24	1-323278	1	Sheave-Transmission

Ref. No.	Part No.	Qty.	Description
25	302-19	2	Fitting-Grease
26	1-323500	1	Transmission
27	3230-1	2	Screw-CARR
28	1-323387-03	1	Plate-Shift
29	98-3256	1	Decal-Speed, Ground
30	1-303020	1	Grip-Lever
31	98-3274-03	1	Lever-Shift
32	98-5975	1	Washer-Belleville
33	3296-6	1	Nut-Lock, NI
35	1-323379	1	Washer-Lever, Shifter
36	32128-20	2	Nut-HF
37	32104-32	4	Screw-HH
38	1-603403	1	Bolt-Shoulder
39	1-323389-03	2	Bracket-Plate, Shift
40	1-806003	1	Pin-Hair
41	1-303186	1	Bellcrank
42	3290-357	1	Nut-HHF
43	95-2814	1	Decal-Shut Off, Fuel
44	3290-500	2	Screw-PPH
45	1-543296	1	Grommet-Line, Fuel
46	3231-6	1	Screw-CARR
47	3296-42	4	Nut-Lock, NI
48	98-0776	1	Decal-Caution
49	1-323256	1	Sheave-Transmission
50	1-403160	1	Sheave, 6.75 E.o.d
53	1-323318-01	2	Hitch-Sulky



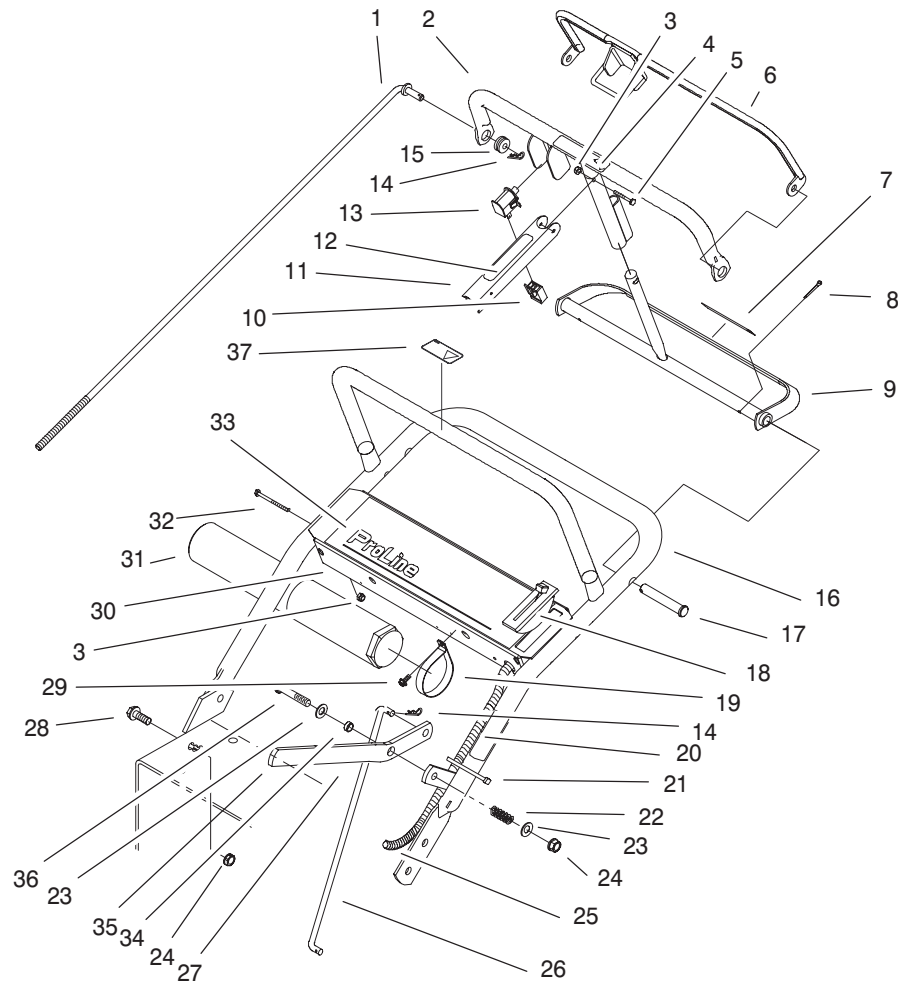


## Wheel Drive Assembly

Ref. No.	Part No.	Qty.	Description
1	98-3273	2	Spring-Extension
2	323-10	2	Screw-HH
3	32151-47	2	Ring-Retaining
4	1-806003	4	Pin-Hair
5	3256-23	2	Washer-Flat
6	104-1321-03	1	RH Idler Arm ASM
7	104-1322-03	1	LH Idler Arm ASM
8	74-0521	2	Fitting-Rod
9	283-6	2	Pin-Clevis
10	1-323296	2	Rod-Brake
11	1-322125	2	Swivel - Brake
12	1-513959	2	Wingnut-Nylock
13	3290-357	14	Nut-HHF
14	323-16	4	Screw-HH
16	98-5131-01	2	Shield-Wheel, Drive
17	1-323694	4	Spacer-Shield
18	1-323634	2	Idler-Drive, Wheel
19	302-19	2	Fitting-Grease
21	1-323307	4	Pin-Clevis
22	1-322209-03	2	Arm-Brake
23	32120-47	2	Ring-Retaining
24	1-803051	4	Nut-Push
25	1-323595	2	Band-Brake
26	1-322212-03	1	Axle ASM
27	1-523157	AR	Washer-Spacer
27	1-543436	AR	Washer, Spacer

Ref. No.	Part No.	Qty.	Description
28	1-323261	2	Drum-Brake
29	1-323253	4	Sheave-Drive, Wheel
31	1-323720	2	Tire-Turfmaster
32	1-323328	2	Wheel & Hub ASM W/ Bearings
33	1-323329	4	Bearing-Flanged
34	1-808519	2	Ring-Snap
35	1-323260	8	Spacer-Sheave, Wheel
36	322-6	8	Screw-HH
37	1-412358	2	Scraper
38	1-323631	2	V-Belt, Wheel Drive
39	3296-29	2	Nut-Lock, NI
40	2412-104	2	R-Clamp
41	98-3259	1	Shield-Trailing
42	322-3	2	Screw-HH
43	98-5975	4	Washer-Belleville
44	323-6	4	Screw-HH

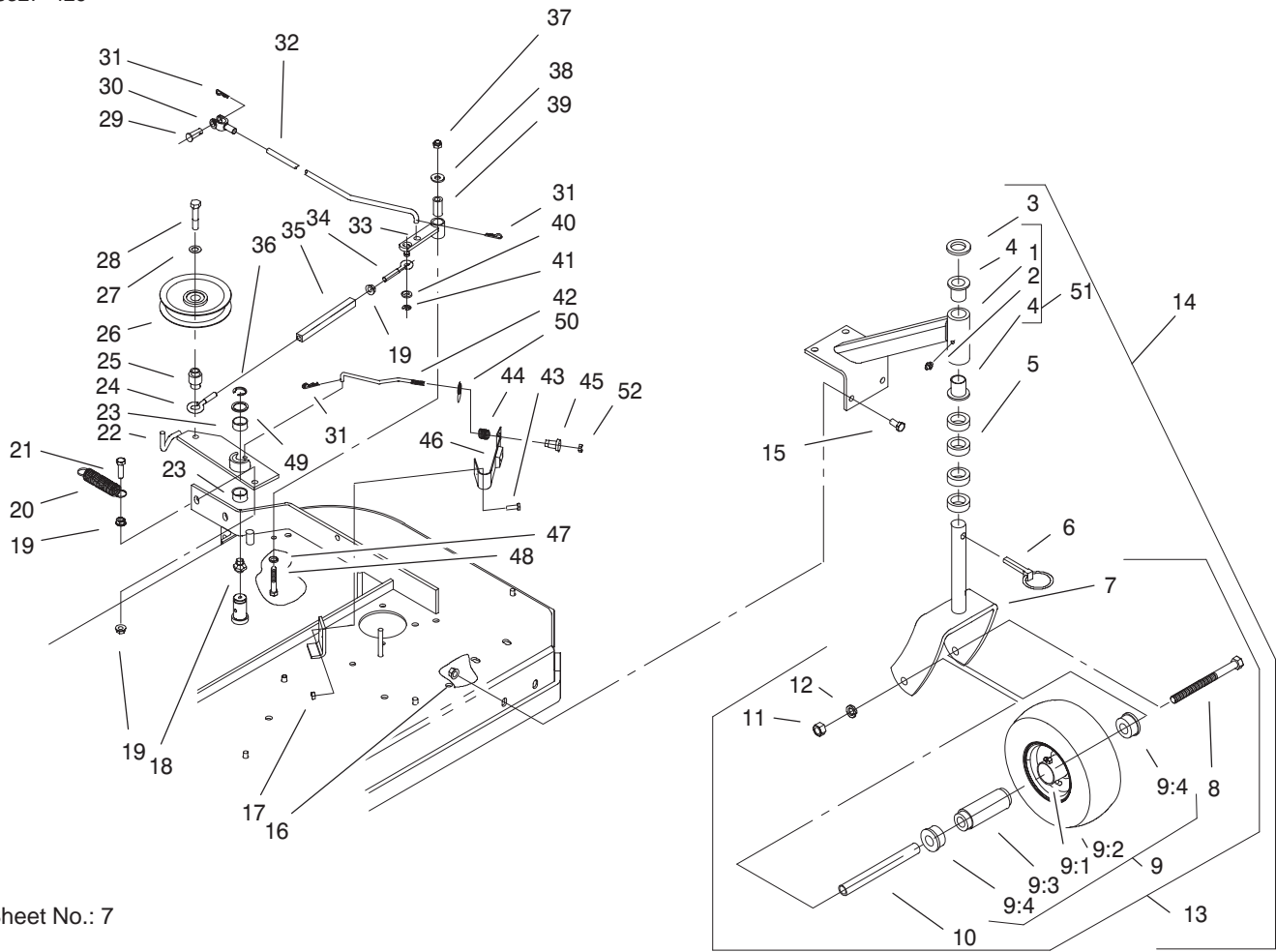
Sheet No.: 4



Sheet No.: 5

## Upper Handle Assembly

Ref. No.	Part No.	Qty.	Description	Ref. No.	Part No.	Qty.	Description
1	98-3282	2	Rod-Control	26	98-3279	1	Linkage-Drive, Blade
2	95-5522-03	1	Control Bar ASM	27	98-3287-03	1	Lever-Engagement, Blade
3	3296-2	5	Nut-Lock	28	323-6	4	Screw-HH
4	82-2290	1	Decal-Bar, Control	29	32104-76	2	Screw
5	32105-1	1	Screw-SHH	30	1-304259	1	Panel-Control
6	98-3289-03	1	Bail ASM	31	74-0720	1	Tube-Manual
7	82-2280	1	Decal-Handle, Reverse	32	32105-14	4	Screw
8	3272-11	2	Pin-Cotter	33	95-5437	1	Decal-Panel, Control
9	99-8501-03	1	Control-Pivot	34	99-8509	1	Spacer
10	218-595	1	Connector-Body	35	1-303020	1	Grip-Lever
11	98-3261-03	1	Lever-Brake, Parking	36	323-10	1	Screw-HH
12	98-3266	1	Decal-Brake, Parking	37	98-4387	1	Decal-Protection, Ear
13	740275	1	Switch-Seat				
14	1-806003	3	Pin-Hair				
15	237-141	2	Grommet-Rubber				
16	98-3267-01	1	Upper Handle ASM				
17	283-55	2	Pin-Clevis				
18	1-323637	1	Cable-Throttle				
19	2412-120	2	R-Clamp				
20	95-5537	1	Decal-Engage, Deck				
21	1-303335	1	Tie-Plastic				
22	1-303160	1	Spring-Compression				
23	3256-24	2	Washer-Flat				
24	3296-39	5	Nut-Lock, NI				
25	98-3257	1	Wire Harness				



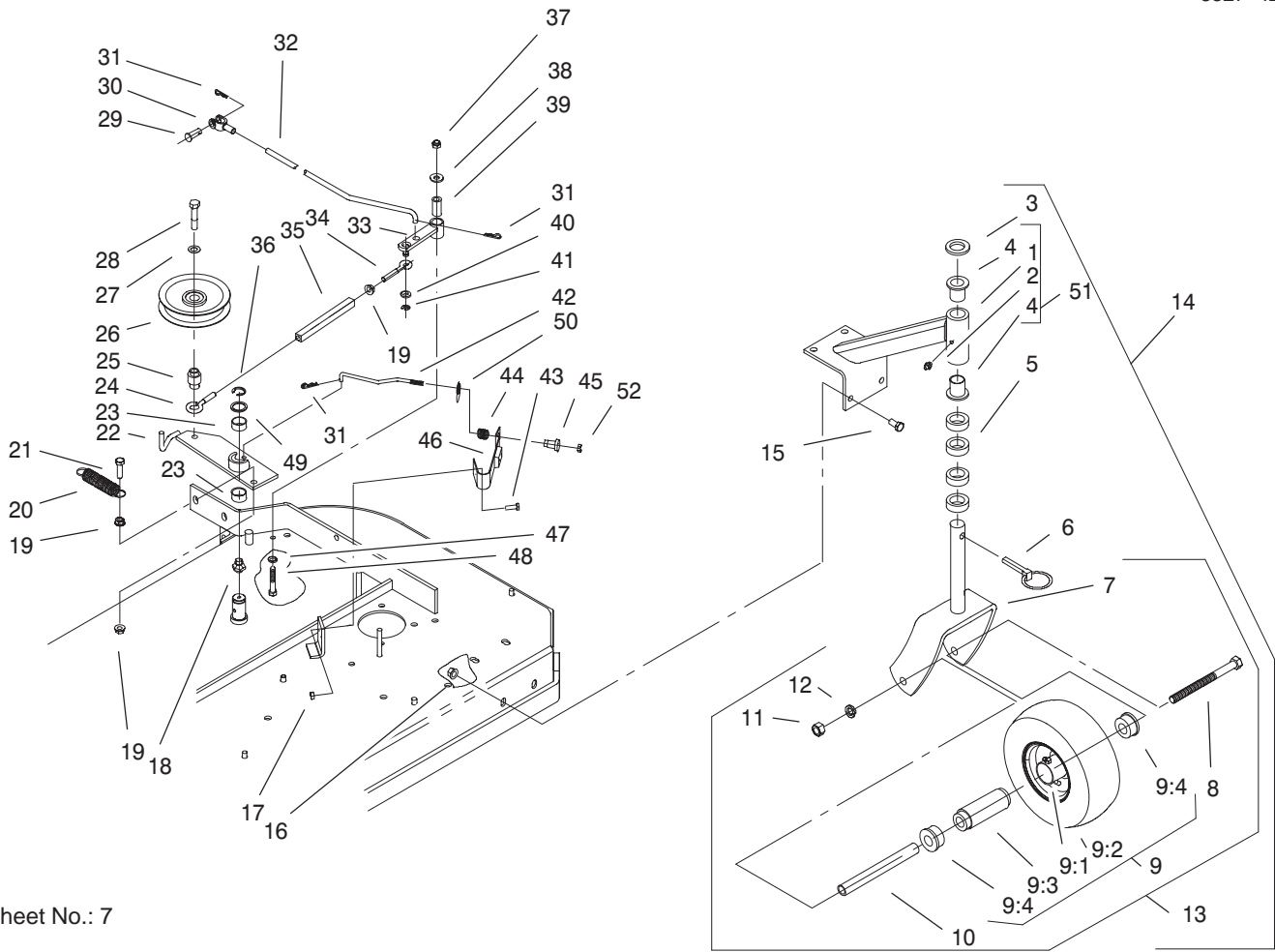
Sheet No.: 7

## Front Caster and Blade Brake Assembly

Ref. No.	Part No.	Qty.	Description
1	1-302194-01	2	Support-Caster
2	302-52	2	Fitting-Grease
3	1-513338	2	Washer-Flat
4	1-303514	4	Bearing-Flanged
5	1-303314	8	Spacer-Caster
6	1-809020	2	Pin
7	1-322145-01	2	Fork
8	325-20	2	Screw-HH
☆9		2	Wheel & Tire ASM
9:1	1-513807	1	Rim
9:2	1-513808	1	Tire
9:3	1-513809	1	Bearing
9:4	1-513810	2	Bushing
10	1-513547	2	Spacer
11	3217-9	2	Nut-HH
12	3253-7	2	Washer-Lock
13	1-322154	2	Caster/Wheel ASM
14	1-322153	2	Caster/Mount ASM
15	323-4	8	Screw-HH
16	3290-357	8	Nut-HHF
17	3296-42	2	Nut-Lock, NI
18	302-19	1	Fitting-Grease
19	32128-20	3	Nut-HF
20	1-323071	1	Spring-Extension
21	322-6	1	Screw-HH

Ref. No.	Part No.	Qty.	Description
22	1-402109	1	Engage Arm ASM W/ Bushings
23	1-323729	2	Sleeve-Bearing
24	1-303348	1	Eyebolt, LH Thread
25	1-303434	1	Bushing-Engagement
26	1-603843	1	Pulley-Idler
27	98-5975	1	Washer-Belleville
28	323-10	1	Screw-HH
29	1-808280	1	Pin-Clevis
30	1-303105	1	Yoke-Adjustable
31	1-806003	3	Pin-Hair
32	1-323303	1	Linkage-Arm, Assist
33	1-322230	1	Arm-Assist
34	1-303238	1	Eyebolt, RH Thread
35	1-303236	1	Body-Turnbuckle
36	32151-103	1	Ring-Snap
37	3296-29	1	Nut-Lock, NI
38	3256-3	1	Washer-Flat
39	1-403179	1	Tube-Pivot
40	3256-23	1	Washer-Flat
41	32120-35	1	E-Ring
42	1-323714	1	Rod-Brake
43	321-4	2	Screw-HH
44	1-323747	1	Spring-Compression
45	1-323746	1	Spacer-Flanged

☆ Not serviced separately

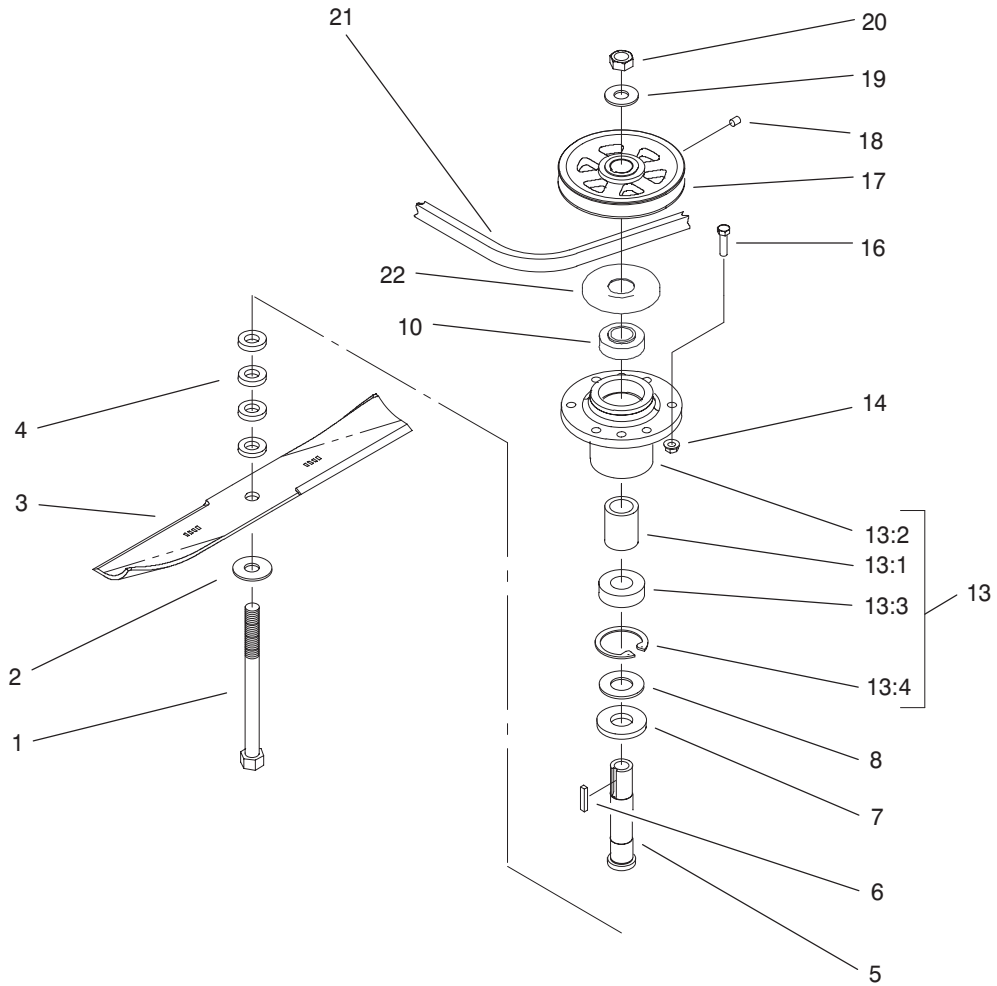


Sheet No.: 7

### Front Caster and Blade Brake Assembly (Continued)

Ref. No.	Part No.	Qty.	Description
46	1-324372	1	Pad/Spring ASM
47	1-303334	1	Washer-Spring
48	322-10	1	Screw-HH
49	1-303352	1	Washer-Spindle
50	1-323748	1	Ring-Push On
51	1-302203	2	Support ASM W/Bushings
52	3296-56	1	Nut-Lock, NI

Ref. No.	Part No.	Qty.	Description
<p style="font-size: 48px; opacity: 0.5; transform: rotate(-1deg);">PROTOTYPE</p>			

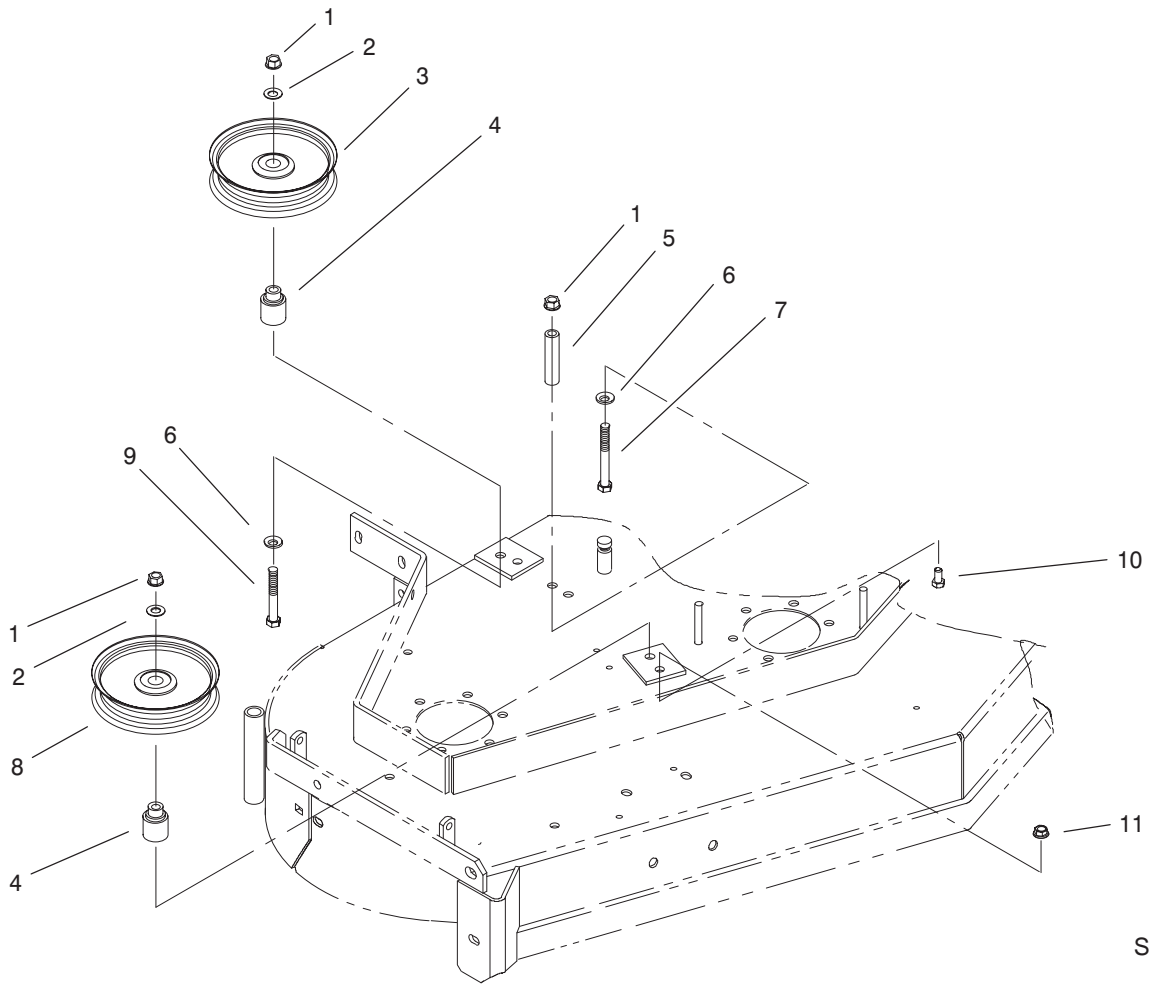


Sheet No.: 8

### Spindle Assembly

Ref. No.	Part No.	Qty.	Description
1	1-800861	3	Screw-Cap, HH
2	1-513208	3	Washer-Spring
3	1-323515	3	Blade
3	1-403149	3	Blade-Low Lift
4	1-323539	12	Spacer-Drive, Blade
5	1-323529	3	Tube-Spindle, Short
6	1-807267	3	Key
7	1-323533	3	Spacer-Pulley/Bearing
8	1-633573	3	Guard-Bearing, Bottom
13	1-634619	3	Cutter Housing ASM
13:1	1-323528	1	Spacer-Bearing
13:2	1-323532	1	Housing-Spindle
13:3	1-513016	2	Bearing
13:4	32120-8	1	Ring-Snap
14	3296-39	18	Nut-Lock, NI
16	323-7	18	Screw-HH
17	1-403183	3	Sheave
18	1-803310	3	Screw-Set
19	1-323339	3	Washer-Retainer, Sheave
20	3219-6	3	Nut-Hex
21	1-403171	1	Belt-Drive, Blade
22	103-1330	3	Guard-Bearing, Top

Ref. No.	Part No.	Qty.	Description
PROTOTYPE			



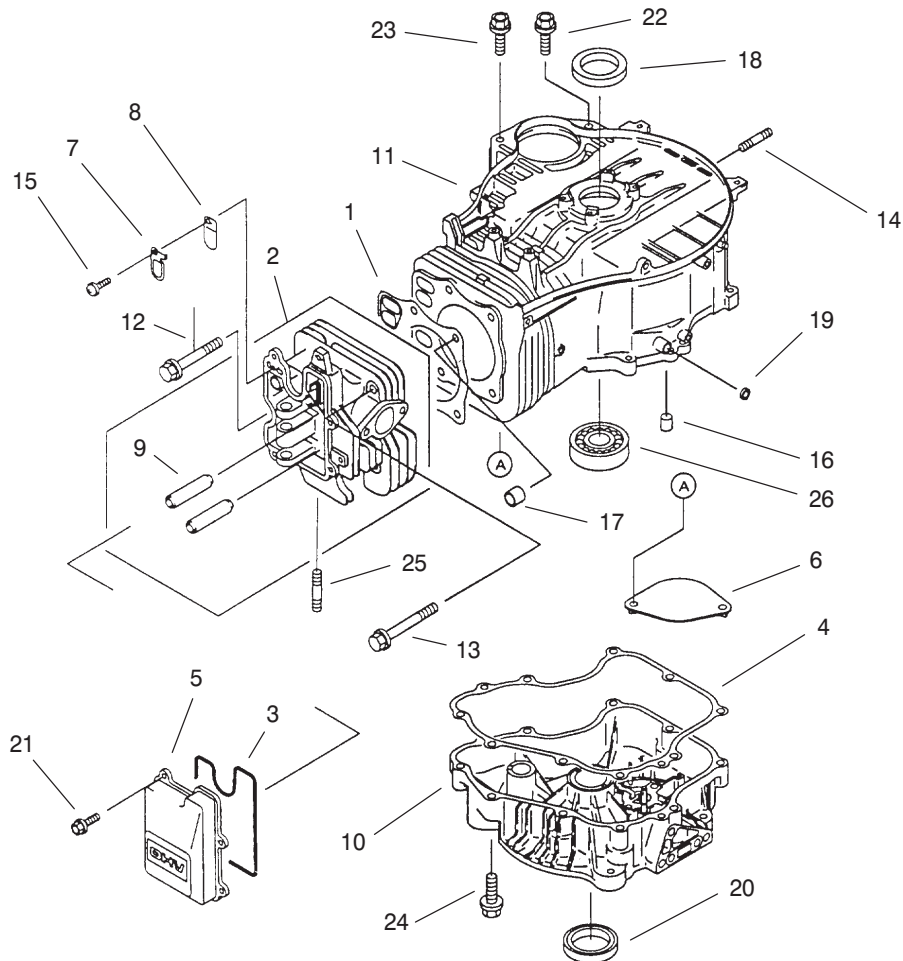
Sheet No.: 9

### Idler Pulley Assembly

Ref. No.	Part No.	Qty.	Description
1	3290-357	3	Nut-HHF
2	3256-24	2	Washer-Flat
3	1-403186	1	Idler-Pulley, Flat
4	1-403184	2	Bushing-Idler
5	1-403188	1	Spacer
6	98-5975	3	Washer-Belleville
7	323-20	1	Screw-HH
8	1-613098	1	Pulley-Idler
9	323-13	2	Screw-HH
10	322-2	2	Screw-HH
11	32128-20	2	Nut-HF

Ref. No.	Part No.	Qty.	Description



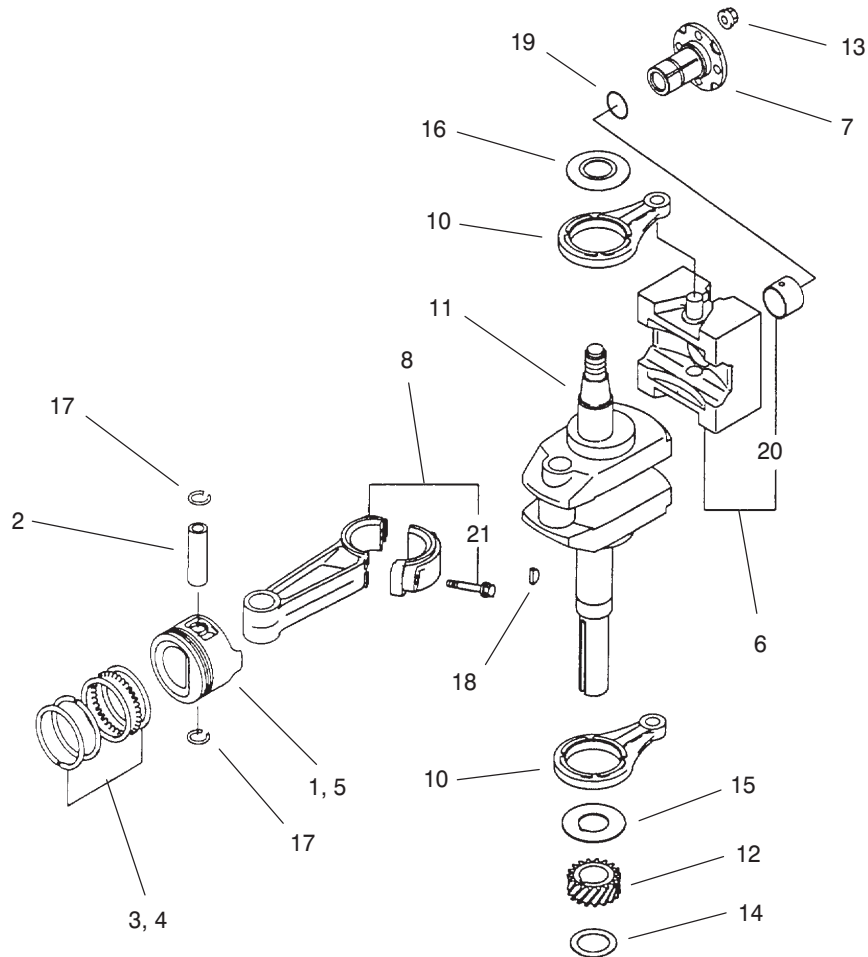


## Cylinder/Crankcase Assembly Kawasaki FC420V-ES15

Ref. No.	Part No.	Qty.	Description
1	11004-2096	1	Gasket-Head
2	11008-6026	1	Head Comp-Cylinder
3	11009-2433	1	Gasket-Rocker Case
4	11009-2947	1	Gasket-Crankcase Cover
5	11022-2070	1	Case-Rocker
6	13183-2264	1	Plate
7	13270-2055	1	Plate
8	16126-2113	1	Valve
9	49002-2107	2	Guide-Valve
10	49015-6174	1	Cover-Crankcase
11	49120-2269	1	Crankcase-Comp
12	92002-2273	3	Bolt
13	92002-2310	2	Bolt
14	92004-2083	4	Stud
15	92009-2308	1	Screw
16	92043-1263	2	Pin
17	92043-1266	2	Pin
18	92049-2096	1	Seal-Oil
19	92049-2097	1	Seal-Oil
20	92049-2227	1	Seal-Oil
21	130B0614	4	Bolt-Flanged
22	130B0830	1	Bolt-Flanged
23	130B0835	1	Bolt-Flanged

Ref. No.	Part No.	Qty.	Description
24	130T0845	9	Bolt-Flanged
25	171G0820	2	Bolt-Stud
26	601A6307	1	Bearing-Ball

Obtain Parts from Kawasaki

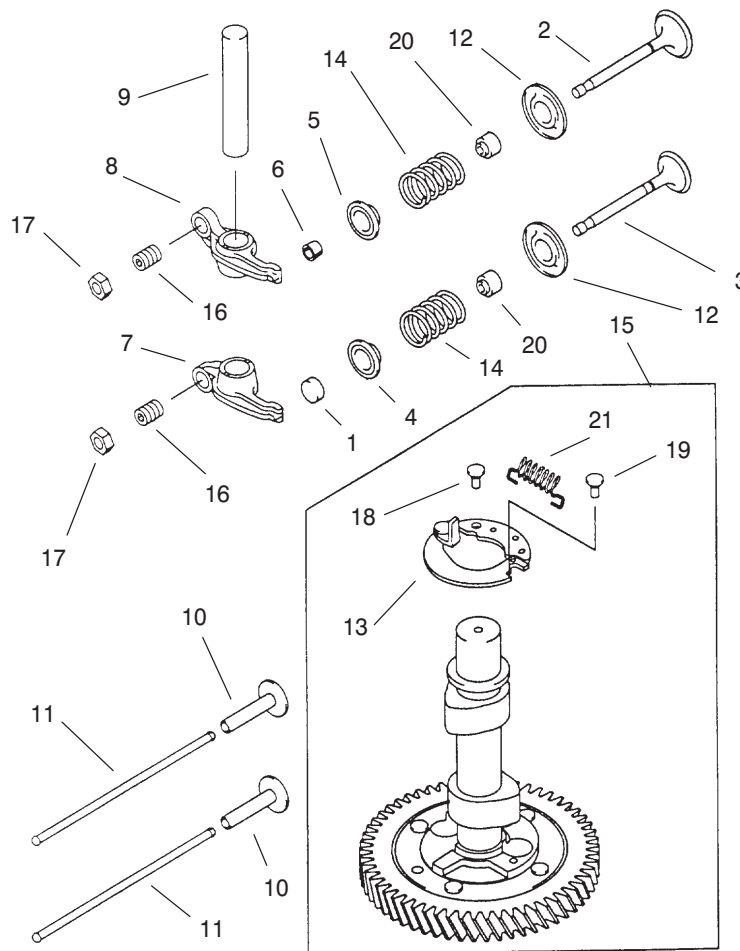


## Piston/Crankshaft Assembly Kawasaki FC420V-ES15

Ref. No.	Part No.	Qty.	Description
1	13001-2130	1	Piston-Engine
2	13002-2078	1	Pin-Piston
3	13008-6053	1	Ring Set-Piston
4	13025-6020	A/R	Ring Set-Piston L,0.50
5	13029-2106	A/R	Piston-Engine L,0.50
6	13042-6010	1	Weight
7	13107-2088	1	Shaft
8	13251-6039	1	Rod Assy-Connecting
8	13251-6041	A/R	Rod Assy-Connecting
10	46102-2077	2	Rod
11	49119-2176	1	Crankshaft Assy
12	59056-2101	1	Gear-Helical
13	92015-1193	4	Nut
14	92025-2210	A/R	Shim, T-1.18
14	92025-2211	A/R	Shim, T-1.215
14	92025-2212	A/R	Shim, T-1.25
14	92025-2213	A/R	Shim, T-1.285
14	92025-2214	A/R	Shim, T-1.32
14	92025-2215	A/R	Shim, T-1.355
14	92025-2216	A/R	Shim, T-1.39
14	92025-2217	A/R	Shim, T-1.425
14	92025-2218	A/R	Shim, T-1.46
14	92025-2219	A/R	Shim, T-1.495
14	92025-2220	A/R	Shim, T-1.53

Ref. No.	Part No.	Qty.	Description
14	92025-2221	A/R	Shim, T-1.565
14	92025-2222	A/R	Shim, T-1.60
14	92025-2223	A/R	Shim, T-1.635
14	92025-2224	A/R	Shim, T-1.67
14	92025-2225	A/R	Shim, T-1.705
14	92025-2226	A/R	Shim, T-1.74
14	92025-2227	A/R	Shim, 1.775
14	92025-2228	A/R	Shim, 1.81
15	92026-2156	1	Spacer
16	92026-2160	1	Spacer
17	92036-008	1	Ring-Snap
18	92038-2094	1	Key
19	92055-2072	1	Ring-O
20	92141-2112	1	Bearing-Plane
21	92150-2193	2	Bolt

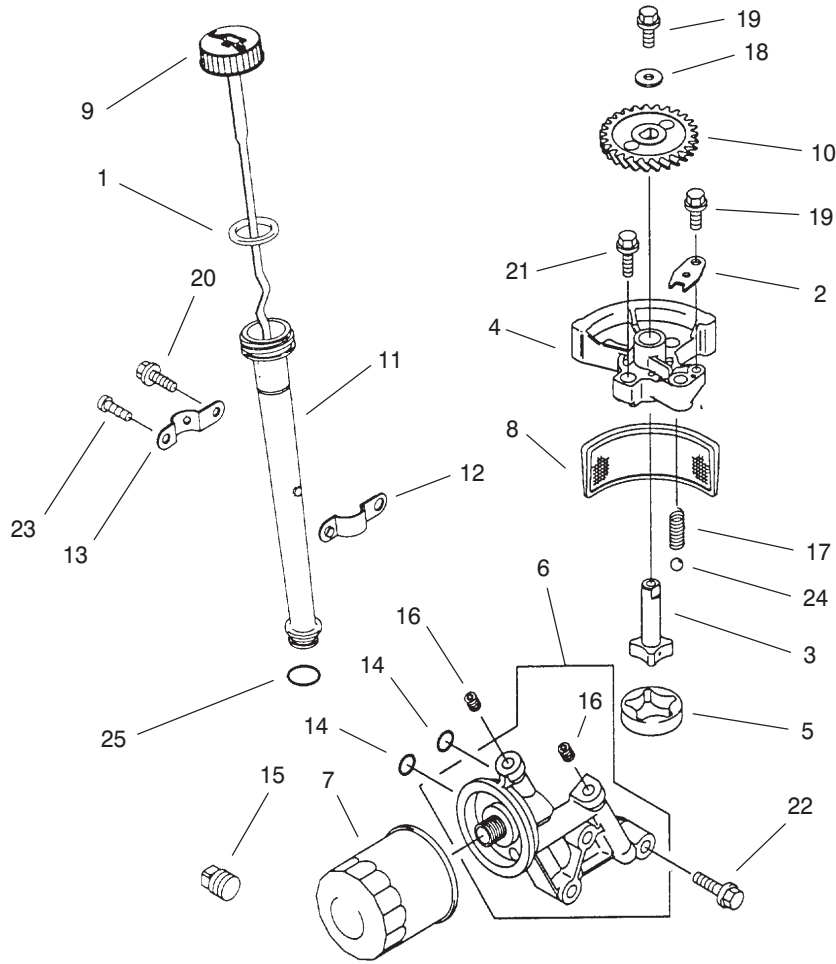
Obtain Parts from Kawasaki



### Valve/Camshaft Assembly Kawasaki FC420V-ES15

Ref. No.	Part No.	Qty.	Description	Ref. No.	Part No.	Qty.	Description
1	11012-2189	1	Cap-Valve				
2	12004-2097	1	Valve-Intake				
3	12005-2086	1	Valve-Exhaust				
4	12009-2058	1	Retainer-Valve Spring				
5	12009-2060	1	Retainer-Valve Spring				
6	12011-2052	2	Collet				
7	12016-2054	1	Arm-Rocker				
8	12016-2055	1	Arm-Rocker				
9	12020-2058	1	Shaft-Rocker				
10	12032-2068	2	Tappet				
11	13116-2056	2	Rod-Push				
12	16007-2073	2	Seat-Spring				
13	21118-2077	1	Decompressor				
14	49078-2076	2	Spring-Engine Valve				
15	49118-2133	1	Camshaft-Comp				
16	92009-2182	2	Screw				
17	92015-2139	2	Nut				
18	92043-2113	1	Pin				
19	92043-2208	1	Pin				
20	92049-2223	2	Seal-Oil				
21	92144-2323	1	Spring				

Obtain Parts from Kawasaki

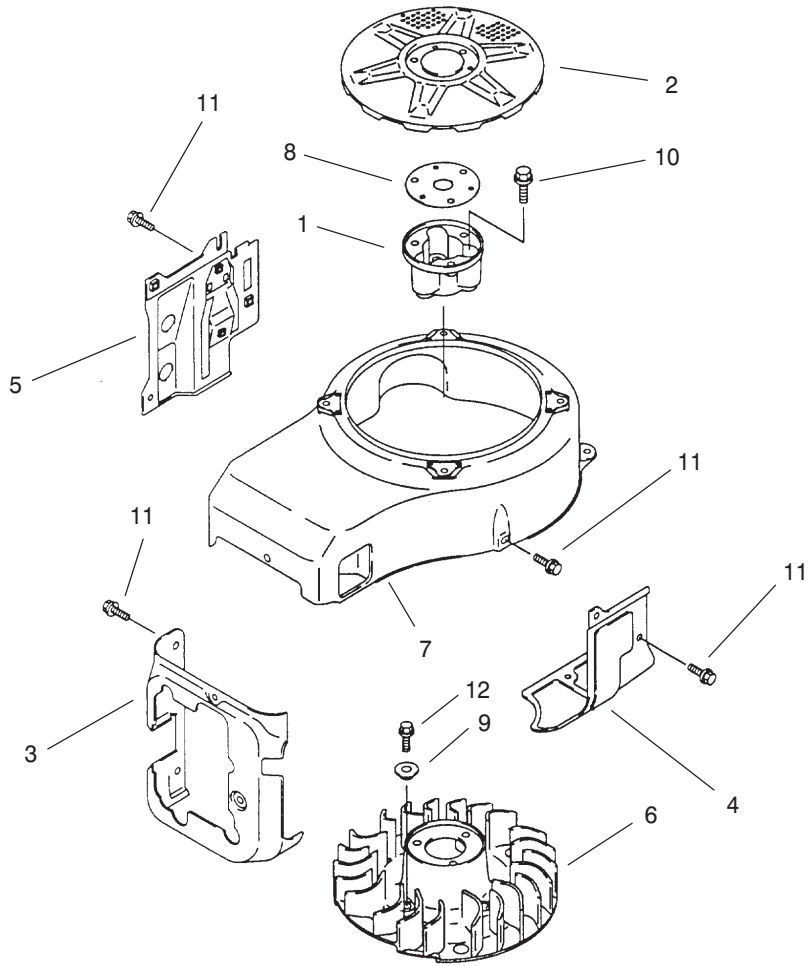


## Lubrication Equipment Assembly Kawasaki FC420V-ES15

Ref. No.	Part No.	Qty.	Description
1	11009-2346	1	Gasket-Oil Gauge
2	13270-2054	1	Plate
3	16082-2059	1	Pump Assy-Oil
4	16142-2068	1	Cover-Pump
5	16154-2052	1	Rotor-Pump
6	31064-6001	1	Pipe-Comp
7	49065-2071	1	Filter-Oil
8	49065-2073	1	Filter-Oil
9	52005-2105	1	Gauge
10	59056-2090	1	Gear-Helical
11	59231-2062	1	Filler
12	92037-2199	1	Clamp
13	92037-2200	1	Clamp
14	92055-2073	2	Ring-O
15	92066-2079	1	Plug
16	92066-2211	2	Plug
17	92144-2391	1	Spring
18	92200-2035	1	Washer
19	130B0610	2	Bolt-Flanged
20	130B0614	1	Bolt-Flanged
21	130B0830	2	Bolt-Flanged
22	130B0840	3	Bolt-Flanged
23	220B0608	1	Screw-Pan Cros

Ref. No.	Part No.	Qty.	Description
24	600A1000	1	Ball-Steel
25	670D2016	1	O Ring

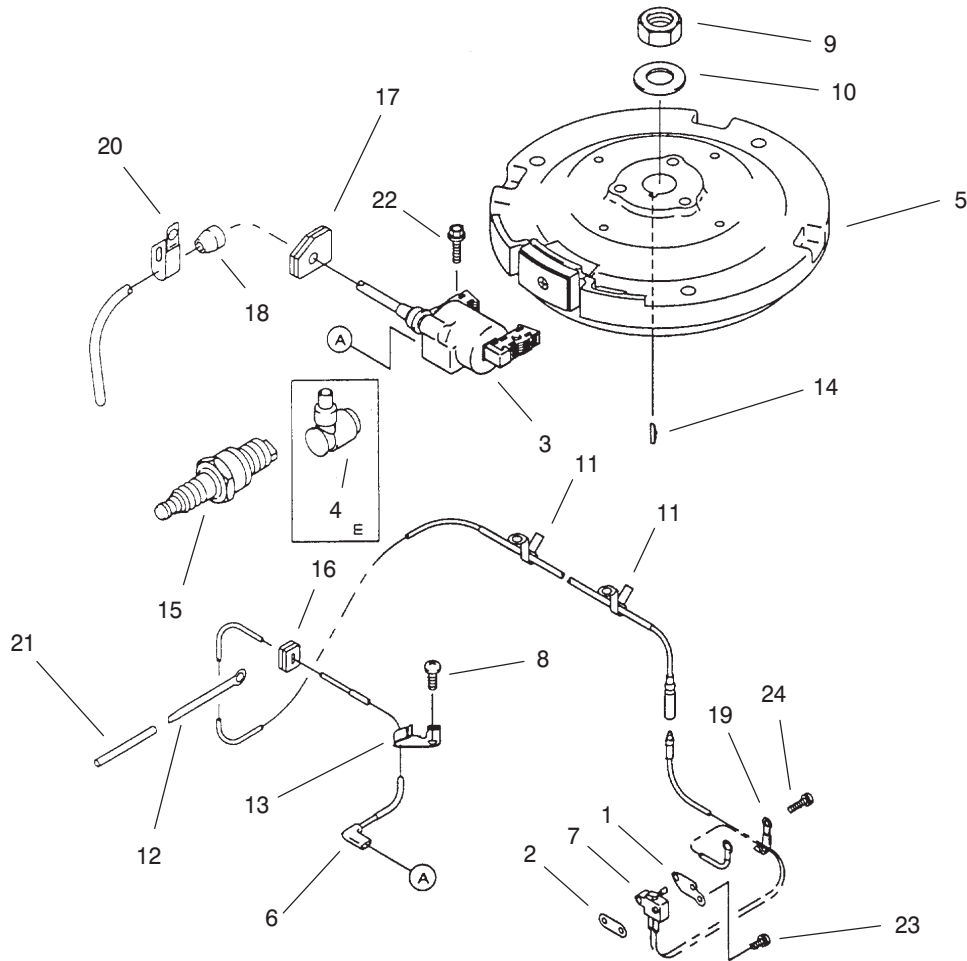
Obtain Parts from Kawasaki



### Cooling Equipment Assembly Kawasaki FC420V-ES15

Ref. No.	Part No.	Qty.	Description	Ref. No.	Part No.	Qty.	Description
1	11044-2084	1	Bracket				
2	14037-2104-9H	1	Screen				
3	49089-2231-9H	1	Shroud-Engine				
4	49089-2232-9H	1	Shroud-Engine				
5	49089-2233-9H	1	Shroud-Engine				
6	59041-2081	1	Fan				
7	59066-2432-9H	1	Housing-Fan				
8	92025-2003	A/R	Shim, T-1.20				
9	92143-2179	4	Collar				
10	130B0820	3	Bolt-Flanged				
11	130G0612	12	Bolt-Flanged				
12	130G0614	4	Bolt-Flanged				

Obtain Parts from Kawasaki



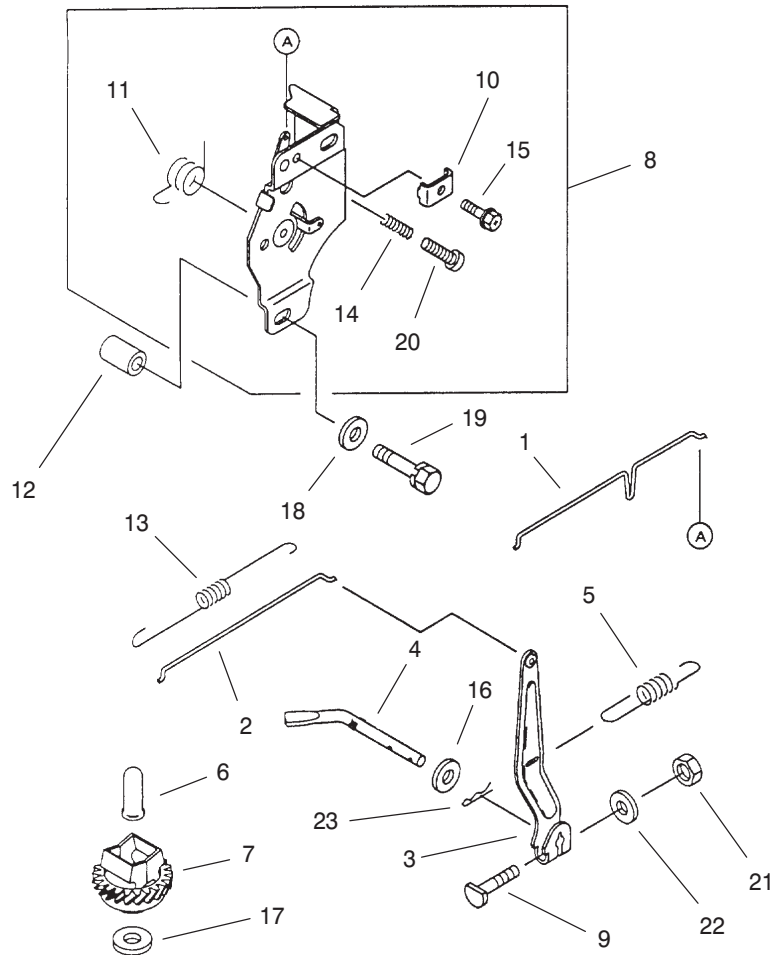
## Electric Equipment Assembly Kawasaki FC420V-ES15

Ref. No.	Part No.	Qty.	Description
1	13183-2373	1	Plate
2	131-2374	1	Plate
3	21121-2086	1	Coil-Ignition
4	21130-2060	1	Cap-Spark Plug
5	21194-2299	1	Flywheel-Comp
6	26011-2327	1	Wire-Lead L-620
7	27010-2167	1	Switch
8	92009-2308	1	Screw
9	92015-2167	1	Nut
10	92022-2229	1	Washer
11	92037-2011	2	Clamp
12	92037-2063	1	Clamp
13	92037-2177	1	Clamp
14	92038-2094	1	Key
15	92070-2088	1	Plug-Spark, BPR5ES (NGK)
16	92071-2099	1	Grommet
17	92071-2112	1	Grommet
18	92071-517	1	Grommet
19	92170-2029	1	Clamp
20	92170-2081	1	Clamp
21	92190-2167	1	Tube
22	130B0520	2	Bolt-Flanged

Ref. No.	Part No.	Qty.	Description
23	233B0410	1	Screw-Pan Ws Cros
24	233B0416	1	Screw-Pan Ws Cros

PROTOTYPE

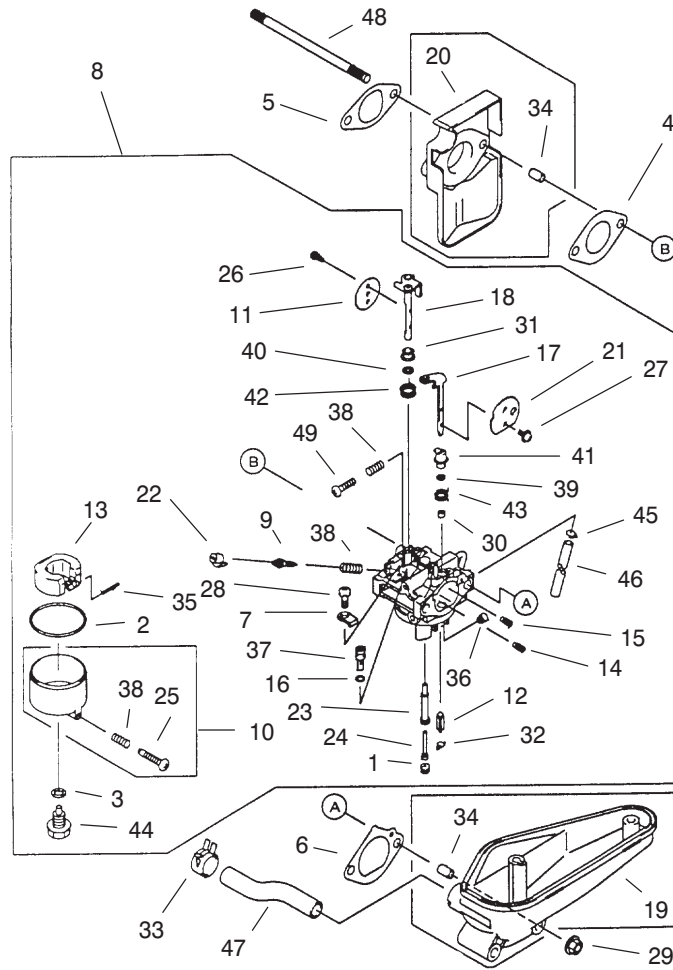
Obtain Parts from Kawasaki



## Control Equipment Assembly Kawasaki FC420V-ES15

Ref. No.	Part No.	Qty.	Description		Ref. No.	Part No.	Qty.	Description
1	16169-2130	1	Link-Choke					
2	16171-2079	1	Link-Governor					
3	21187-2055	1	Arm Assy					
4	39003-2073	1	Arm-Pivot					
5	39129-2042	1	Spring-Governor					
6	42036-2060	1	Sleeve					
7	49110-2084	1	Governor Assy					
8	49113-2091	1	Panel-Comp Control					
9	92002-2269	1	Bolt					
10	92037-2020	1	Clamp					
11	92081-2316	1	Spring					
12	92143-2006	2	Collar					
13	92144-2033	1	Spring					
14	92144-2266	1	Spring					
15	92150-2182	1	Bolt					
16	92200-2029	1	Washer					
17	92200-2036	1	Washer					
18	92200-2070	2	Washer					
19	180B0635	2	Bolt-Upset WS					
20	214B0416	1	Screw-Pan					
21	311B0600	1	Nut-Hex					
22	411B0600	1	Washer-Plain					
23	544A0600	1	Pin-Snap					

Obtain Parts from Kawasaki

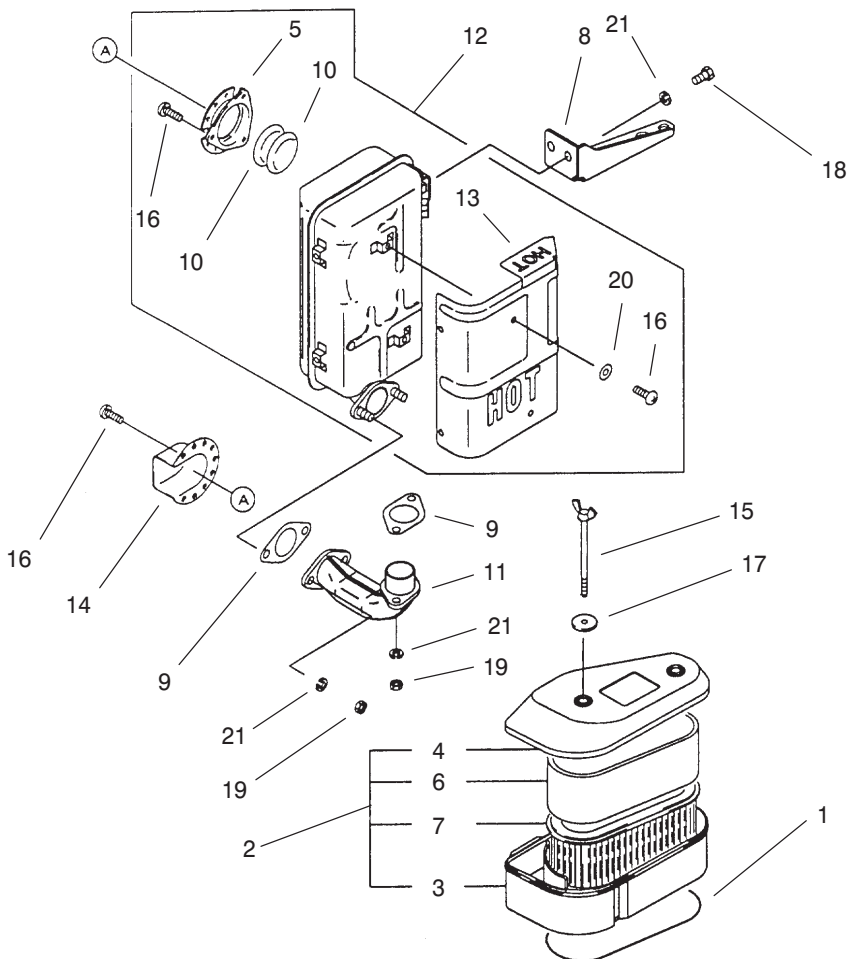


## Carburetor Assembly Kawasaki FC420V-ES15

Ref. No.	Part No.	Qty.	Description
1	11003-2101	1	Seat-Valve
2	11009-2024	1	Gasket
3	11009-2025	1	Gasket
4	11060-2339	1	Gasket-Carburetor
5	11060-2340	1	Gasket-Insulator
6	11060-2341	1	Gasket-Intake Pipe
7	13183-2252	1	Plate
8	15003-2349	1	Carburetor Assy
9	16014-2075	1	Screw-Pilot Air
10	16020-2109	1	Chamber-Float
11	16025-2137	1	Valve-Throttle, #90
12	16030-2073	1	Valve-Float
13	16031-2066	1	Float
14	16035-2056	1	Jet-Air, #1.8
15	16035-2058	1	Jet-Air, #1.1
16	16038-024	1	Gasket
17	16041-2163	1	Shaft-Choke
18	16041-2215	1	Shaft-Throttle
19	16060-2130	1	Pipe-Intake
20	16073-2108	1	Insulator
21	16126-2170	1	Valve-Choke
22	39076-2053	1	Limiter
23	49121-2188	1	Nozzle-Main, 89A
24	49123-2075	1	Holder-Main Jet

Ref. No.	Part No.	Qty.	Description
25	92009-2015	1	Screw
26	92009-2080	2	Screw
27	92009-2081	2	Screw
28	92009-2244	1	Screw
29	92015-1193	2	Nut
30	92027-2003	1	Collar
31	92027-2025	1	Collar
32	92033-2067	1	Ring-Snap
33	92037-2012	1	Clamp
34	92043-1263	4	Pin
35	92043-2006	1	Pin
36	92063-2257	1	Jet-Main, #100
37	92064-2101	1	Jet-Main, #60
38	92081-2009	3	Spring
39	92093-2069	1	Seal
40	92093-2082	1	Seal
41	92143-2142	1	Collar
42	92144-2037	1	Spring
43	92144-2160	1	Spring
44	92150-2301	1	Bolt
45	92170-2023	1	Clamp
46	92190-2011	1	Tube
48	172G06115	2	Bolt-Stud
49	214B0414	1	Screw-Pan

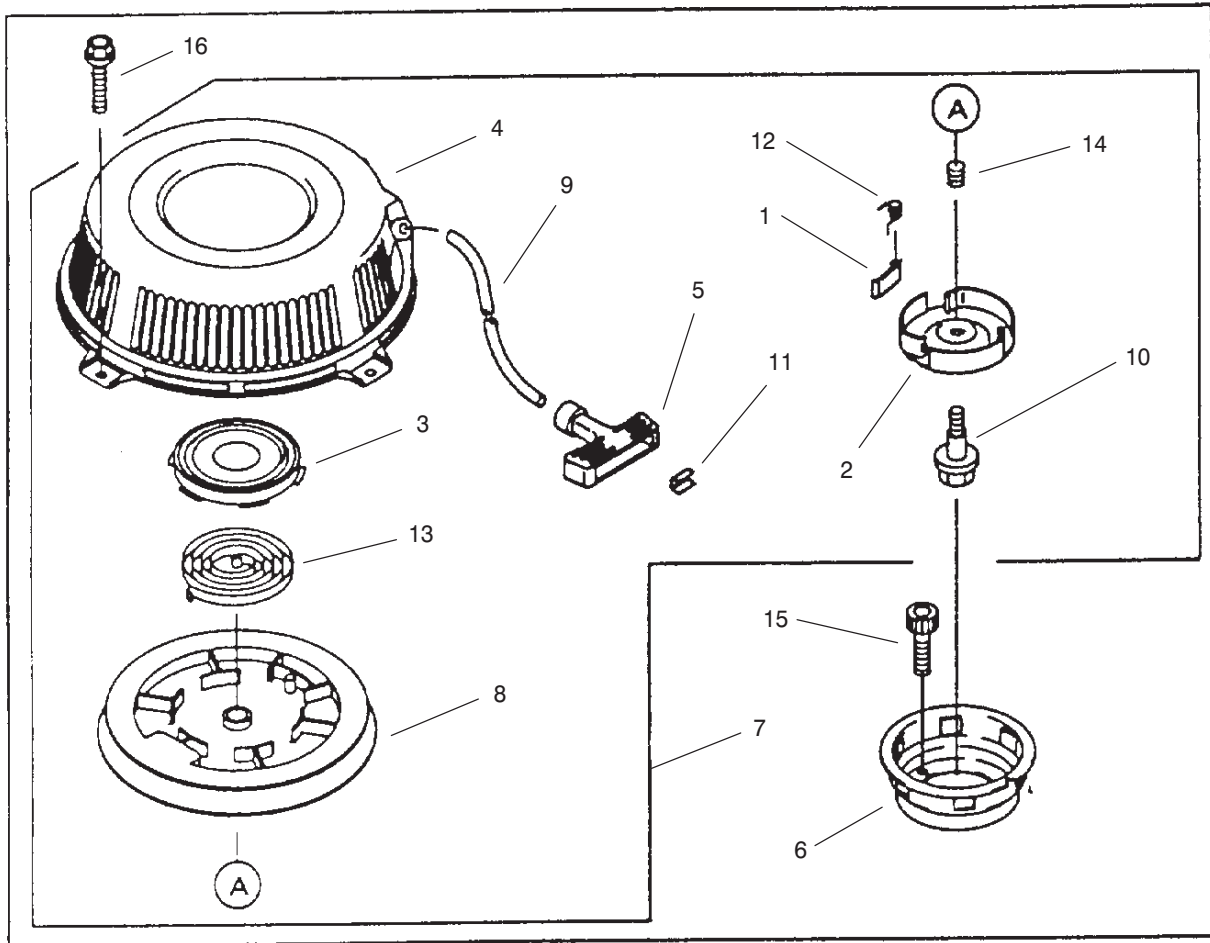
Obtain Parts from Kawasaki



### Air Filter/Muffler Assembly Kawasaki FC420V-ES15

Ref. No.	Part No.	Qty.	Description	Ref. No.	Part No.	Qty.	Description
1	11009-2505	1	Gasket-Air Filter				
2	11010-2421	1	Filter Assy-Air				
3	11011-2227	1	Case-Air Filter				
4	11012-2223	1	Cap-Air Filter				
5	11012-2383-9Y	1	Cap				
6	11013-2109	1	Element-Air Filter				
7	11013-2141	1	Element-Air Filter				
8	11046-2160-9Y	1	Bracket				
9	11060-2382	2	Gasket-Muffler				
10	18077-2052	2	Arrester-Spark				
11	49062-2057-9Y	1	Pipe-Comp Exhaust				
12	49069-2228-9Y	1	Muffler Assy				
13	49106-2471-9Y	1	Cover-Muffler				
14	49107-2119-9Y	1	Cover-Exhaust Pipe				
15	92002-2274	2	Bolt				
16	92009-2166	12	Screw				
17	92022-2220	2	Washer				
18	115G816	2	Bolt-Small Upset				
19	317R0800	4	Nut-Hex Small				
20	411B0500	6	Washer-Plain				
21	461F0800	6	Washer-Spring				

Obtain Parts from Kawasaki



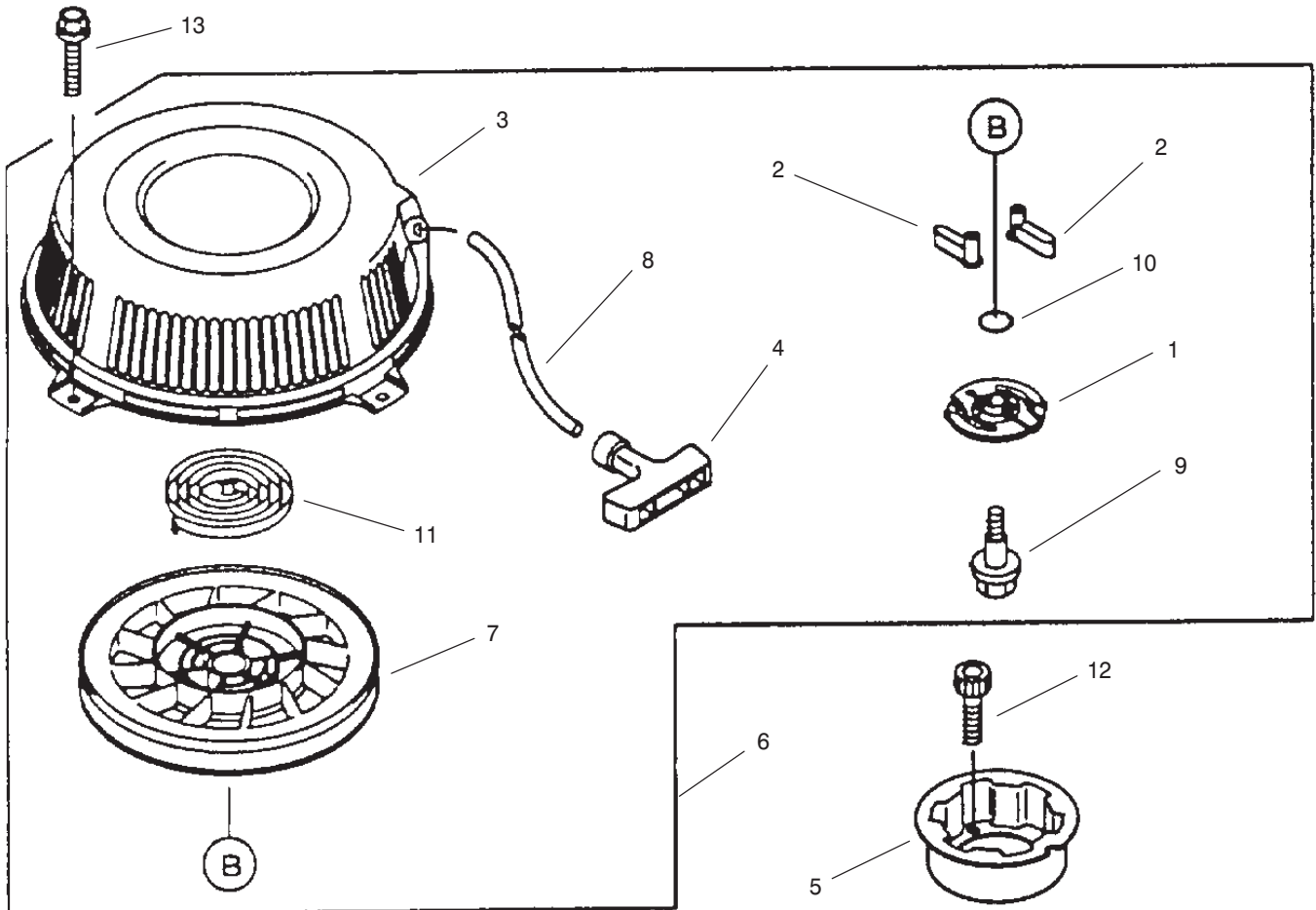
## Starter Assembly Kawasaki FC420V-ES15

Ref. No.	Part No.	Qty.	Description
1	13165-2073	3	Pawl-Recoil Starter
2	14020-2054	1	Retainer-Recoil Starter
3	32099-2060	1	Case-Spring
4	32099-2239-YK	1	Case-Rocoil Starter
5	46075-2059	1	Grip-Recoil Starter
6	49080-2144	1	Pulley-Starting
7	49088-2412-YK	1	Starter-Recoil
8	59101-2054	1	Reel-Recoil Starter
9	59106-2060	1	Rope
10	92001-2027	1	Bolt
11	92022-2248	1	Washer
12	92081-2021	3	Spring
13	92081-2267	1	Spring-Recoil
14	92081-2268	1	Spring-Return
15	120P0620	3	Bolt-Socket
16	130B0610	4	Bolt-Flanged

Ref. No.	Part No.	Qty.	Description

PROTOTYPE

Obtain Parts from Kawasaki



## Recoil Starter Assembly Kawasaki FC420V-ES15

Ref. No.	Part No.	Qty.	Description
1	13070-2102	1	Guide
2	13165-2092	2	Pawl-Recoil Starter
3	32099-2308-9H	1	Case-Recoil Starter
4	46075-2106	1	Grip-Recoil Starter
5	49080-2176	1	Pulley-Starting
6	49088-2473-9H	1	Starter-Recoil
7	59101-2103	1	Reel-Recoil Starter
8	59106-2082	1	Rope
9	92009-2382	1	Screw
10	92033-2175	1	Ring-Snap
11	92144-2399	1	Spring
12	120P0620	3	Bolt-Socket
13	130B0610	4	Bolt-Flanged

Ref. No.	Part No.	Qty.	Description
PROTOTYPE			

Obtain Parts from Kawasaki



*PROTOTYPE*