



# Backhoe

## Dingo<sup>®</sup> Attachment

Model No. 23160—22000001 and Up

## Parts Catalog

### Ordering Replacement Parts

To order replacement parts, please supply: the part number, the quantity, and the description of each part desired.

### Understanding Reference Numbers

Each identified part in an illustration has a reference number. The reference number for a part also appears in the parts list, along with other information about the part.

This catalog uses two special reference number formats, one to indicate parts in a service assembly and another to indicate the quantity of a given part in an illustration.

### Service Assembly Reference Numbers

Parts in service assemblies have reference numbers in the form **a:b**. The **a** represents the reference number of the entire service assembly and the **b** represents a sequential number unique to each part within the service assembly.

For example, a wheel assembly might be identified by reference number **6**, the tire by **6:1**, the valve by **6:2**, and the wheel by **6:3**. When you order the assembly identified by reference number **6**, you receive all parts identified by reference numbers **6:1**, **6:2**, and **6:3**. However, you may also order any part individually.

Reference numbers of this type appear in illustrations and in part lists.

### Reference Numbers Indicating Quantity

In an illustration, if a reference number indicates more than one part, the reference number has the form **nX y**. The **n** represents the quantity of the part, the **X** is the multiplication symbol, and the **y** represents the reference number.

For example, in an illustration, the reference number **2X 37** means that two of the parts identified by reference number **37** are indicated.

## Contents

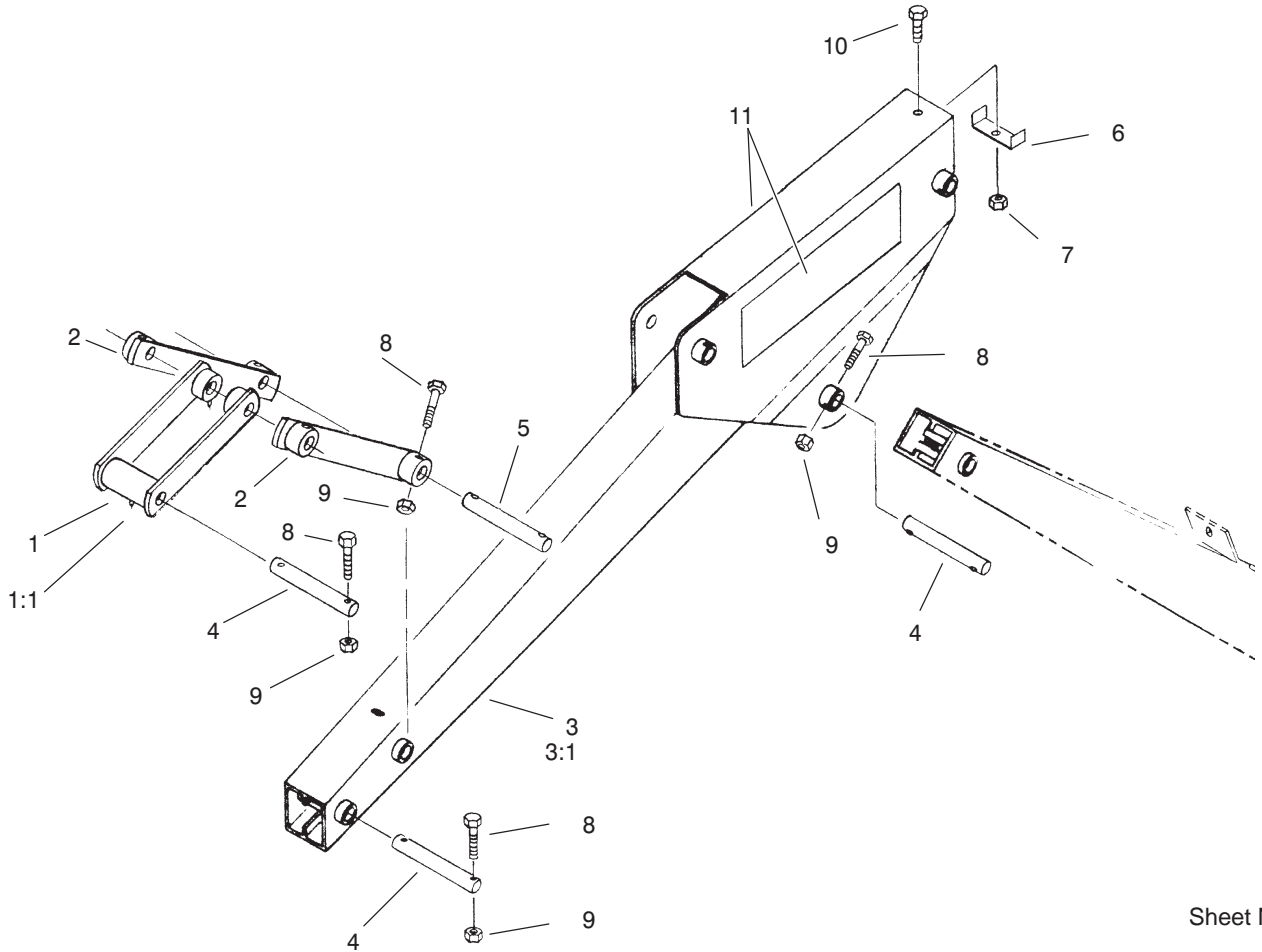
<b>Description</b>	<b>Page</b>	<b>Description</b>	<b>Page</b>
Crown Arm and Linkage Assembly . . . . .	3	Valve Assembly No. 100-7205 . . . . .	7
Frame, Boom and Stabilizer Assembly . . . . .	4	Hydraulic Assembly . . . . .	8
Seat and Mounting Assembly . . . . .	5	Hydraulic Fitting and Tooth Assembly . . . . .	9
Cylinder and Control Assembly . . . . .	6	Hydraulic Schematic . . . . .	10

## Part Description Abbreviations

Part descriptions in this catalog may include the following abbreviations.

<b>Abbreviation</b>	<b>Meaning</b>	<b>Abbreviation</b>	<b>Meaning</b>
AR . . . . .	as required	HYD . . . . .	hydraulic
ASM . . . . .	assembly	INC . . . . .	incorporated
CARR . . . . .	carriage	LH . . . . .	left hand
DEG . . . . .	degrees	NI . . . . .	nylon insert
FH . . . . .	flat head	PPH . . . . .	Phillips pan head
GA . . . . .	gauge	PTH . . . . .	Phillips truss head
HF . . . . .	hex flange	PTO . . . . .	power take off
HH . . . . .	hex head	RH . . . . .	right hand
HHF . . . . .	hex head flange	SFH . . . . .	slotted fillister head
HLH . . . . .	hex lag head	SHH . . . . .	slotted hex head
HJ . . . . .	hex jam	SQH . . . . .	square head
HOC . . . . .	height-of-cut	SHWH . . . . .	slotted hex washer head
HS . . . . .	hex socket	SPH . . . . .	slotted pan head
HSBH . . . . .	hex socket button head	SRH . . . . .	slotted round head
HSFH . . . . .	hex socket flat head	STD . . . . .	standard
HSH . . . . .	hex socket head	TAP . . . . .	self tapping
HWH . . . . .	hex washer head	TTH . . . . .	Torx truss head
HWHTF . . . . .	hex washer head thread forming	WH . . . . .	wing head

PROTOTYPE

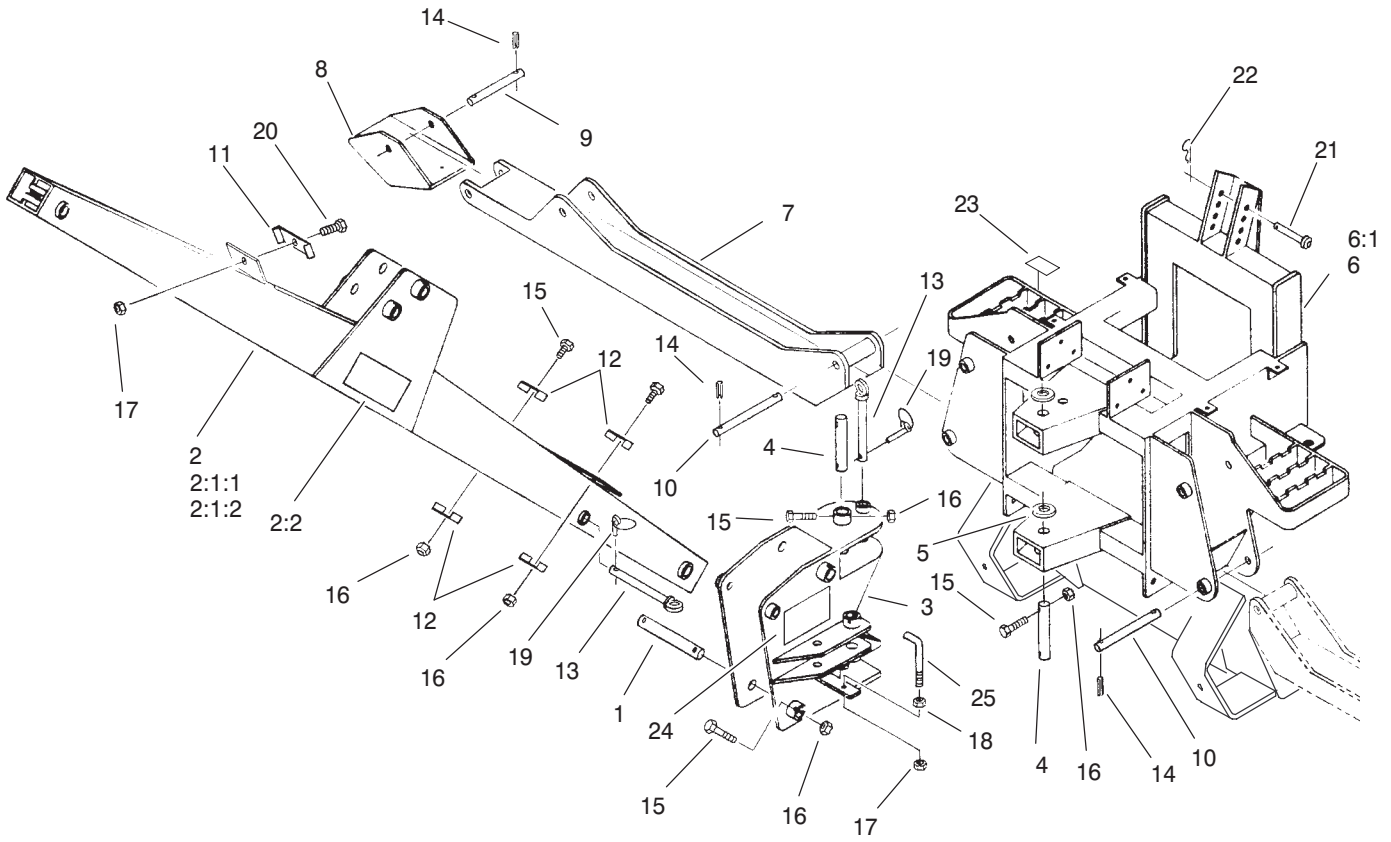


Sheet No.: 2

## Crown Arm and Linkage Assembly

Ref. No.	Part No.	Qty.	Description
1	100-7163	1	Linkage ASM
1:1	302-19	3	Fitting-Grease
2	100-7160	2	Linkage Strap ASM
3	100-7155	1	Crowd Arm ASM
3:1	302-19	2	Fitting-Grease
4	100-7170	3	Pin-Bucket
5	100-7171	2	Pin-Linkage
6	100-7183	1	Bracket-Hose
7	3296-29	1	Nut-Lock, NI
8	321-33	8	Screw-HH
9	32146-17	8	Nut-Lock
10	322-7	1	Screw-HH
11	62-7400	2	Decal-Logo, Toro

Ref. No.	Part No.	Qty.	Description



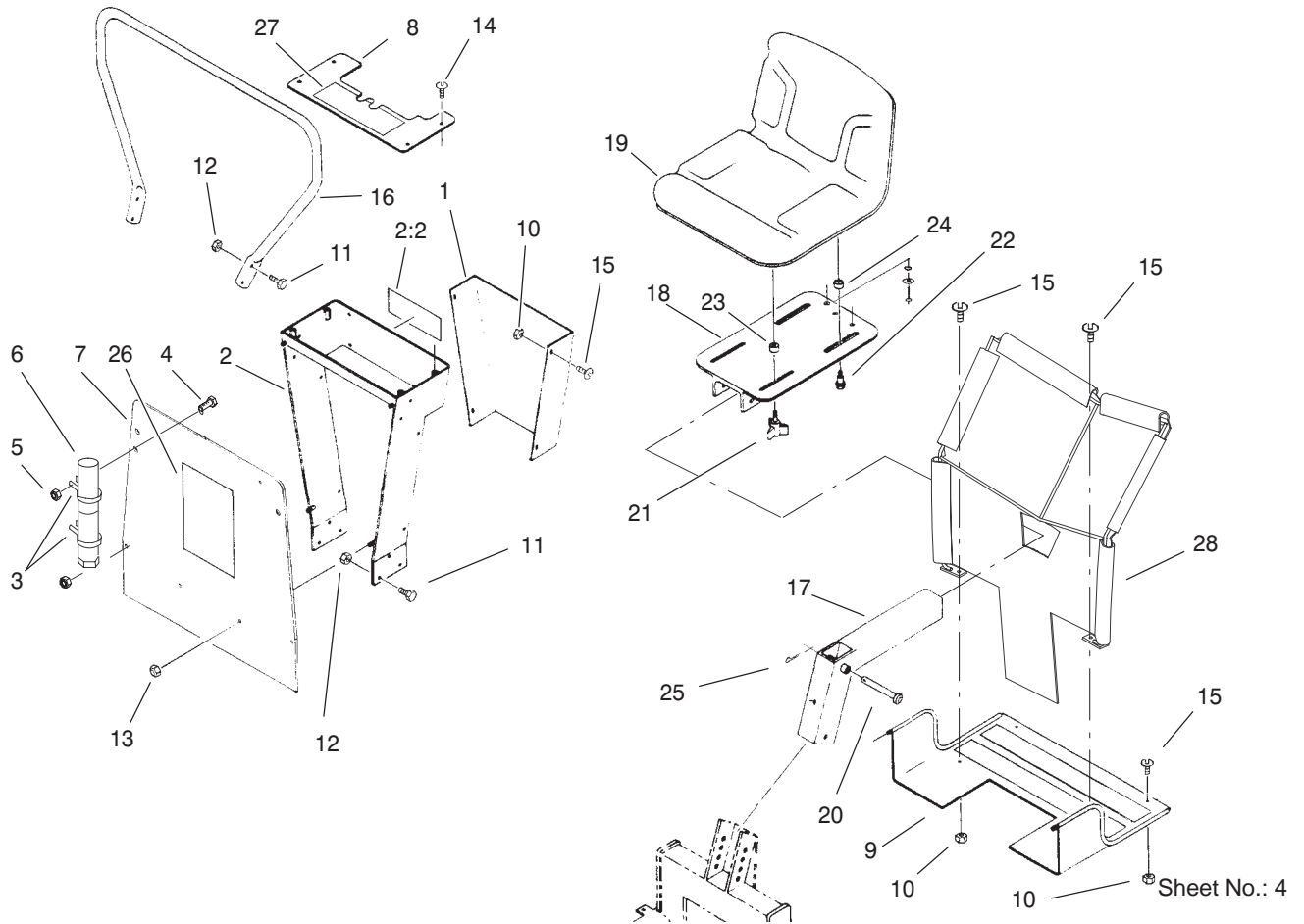
Sheet No.: 3

## Frame, Boom and Stabilizer Assembly

Ref. No.	Part No.	Qty.	Description
1	100-7170	2	Pin-Bucket
2	100-7215	1	Boom ASM
*2:1:1	302-19	1	Fitting-Grease
*2:1:2	302-60	1	Fitting-Grease
2:2	100-4132	2	Decal-Warning
3	100-7156	1	Swivel ASM
4	100-7175	2	Pin-Pivot
5	100-7187	2	Washer-Thrust
6	100-7151	1	Box Frame ASM
*6:1	302-19	2	Fitting-Grease
7	100-7153	2	Stabilizer ASM
8	100-7161	2	Stabilizer Foot ASM
9	100-7184	2	Pin-Foot, Stabilizer
10	100-7185	4	Pin-Stabilizer
11	100-7183	1	Bracket-Hose
12	100-7182	4	Bracket-Hose
13	100-7164	2	Lock Pin ASM
14	32121-15	16	Pin-Roll
15	321-33	28	Screw-HH
16	32146-17	4	Nut-Lock
17	3296-29	4	Nut-Lock, NI
18	3217-6	2	Nut-Hex
19	283-72	6	Pin-Lynch
20	322-7	1	Screw-HH
21	100-7209	1	Pin-Clevis
22	3290-355	1	Pin-Hair

Ref. No.	Part No.	Qty.	Description
23	100-7263	2	Decal-Warning
24	100-4134	2	Decal-Pin Placement
25	100-7222	2	Bracket-Hose

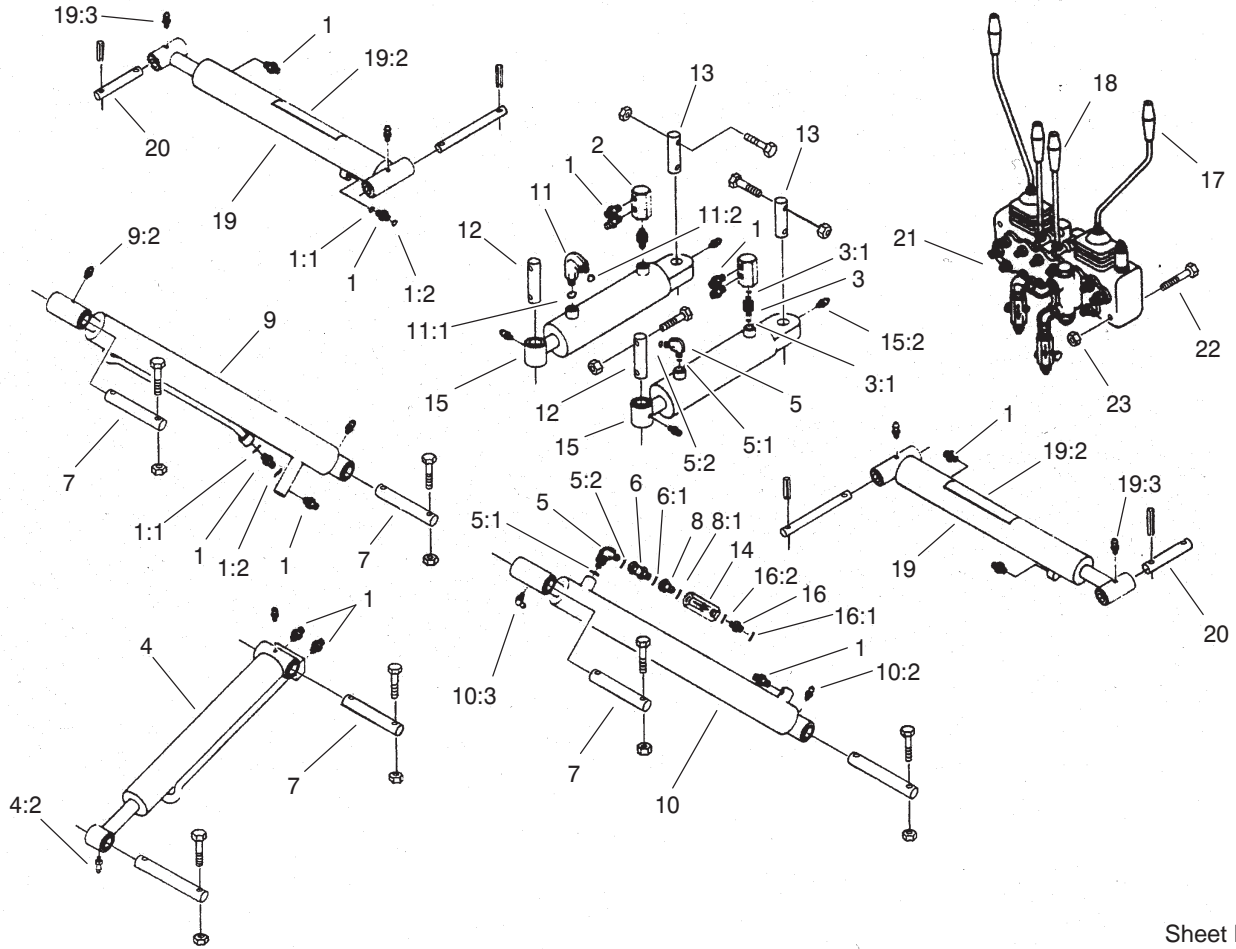
\* Not illustrated



## Seat and Mounting Assembly

Ref. No.	Part No.	Qty.	Description
1	100-7166	1	Guard-Hose
2	100-7207	1	Valve Mount ASM
2:2	100-4133	1	Decal-Warning
3	2412-120	2	R-Clamp
4	32104-19	2	Screw
5	3296-2	2	Nut-Lock
6	74-0720	1	Tube-Manual
7	100-7165	1	Panel-Front
8	100-7169	1	Cover-Valve
9	100-7162	1	Foot Plate ASM
10	32146-17	32	Nut-Lock
11	322-3	10	Screw-HH
12	3296-29	6	Nut-Lock, NI
13	3296-17	4	Nut-Lock NI
14	3258-2	4	Screw
15	3290-133	8	Screw
16	100-7167	1	Handle-Guard
17	100-7157	1	Seat Mount ASM
18	100-7158	1	Seat Plate ASM
19	88-3950	1	Seat-Medium Back
20	100-7208	1	Pin-Clevis
21	700806	2	Knob
22	92-6986	2	Bolt-Shoulder
23	92-6750	2	Spacer-Nylon
24	109989	2	Spacer-Nylon
25	3272-31	1	Pin-Cotter

Ref. No.	Part No.	Qty.	Description
26	62-7400	1	Decal-Logo, Toro
27	100-4138	1	Decal-Panel, Control
28	105-7700	1	Backhoe Heat Shield ASM



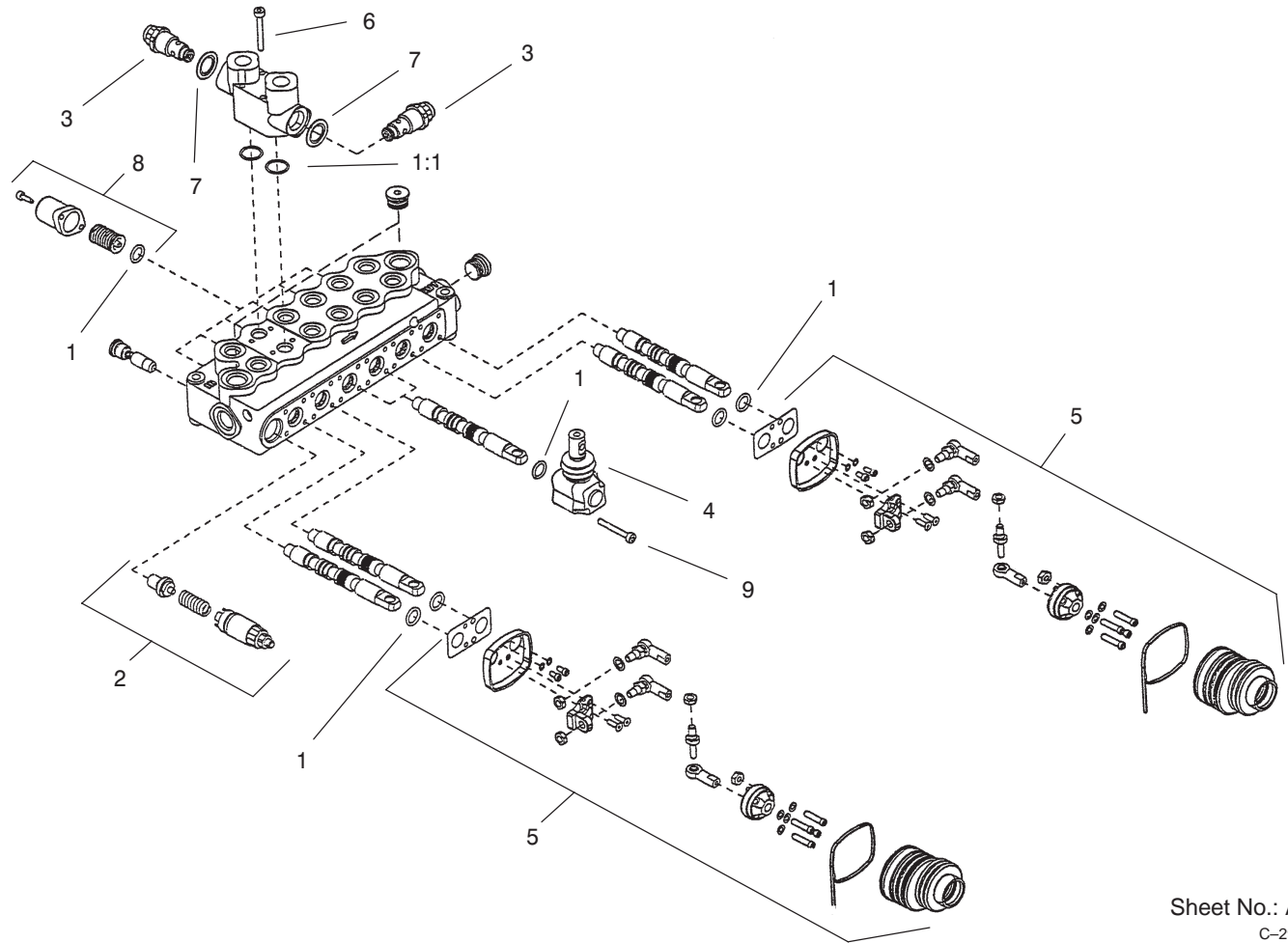
Sheet No.: 5

## Cylinder and Control Assembly

Ref. No.	Part No.	Qty.	Description
1	340-92	13	Fitting-HYD, Straight
1:1	237-78	1	O-Ring
1:2	237-21	1	O-Ring
2	100-7178	2	Fitting-Hex
3	93-7597	2	Fitting
3:1	237-78	2	O-Ring
4	100-7204	1	Cylinder-HYD, Bucket
*4:1	100-7220	1	Kit-Seal
4:2	302-19	2	Fitting-Grease
5	340-132	2	Fitting-HYD, 90°
5:1	237-78	1	O-Ring
5:2	237-21	1	O-Ring
6	100-7211	1	Fitting-Swivel, Straight
6:1	237-78	1	O-Ring
7	100-7172	4	Pin-Boom
8	100-7216	1	Fitting-Reducer
8:1	237-42	1	O-Ring
9	100-7202	1	Cylinder-HYD, Crowd Arm
*9:1	100-7220	1	Kit-Seal
9:2	302-19	2	Fitting-Grease
10	100-7203	1	Cylinder-HYD, Boom
*10:1	100-7220	1	Kit-Seal
10:2	302-19	1	Fitting-Grease
10:3	302-60	1	Fitting-Grease
11	100-7213	1	Fitting-90°

Ref. No.	Part No.	Qty.	Description
11:1	237-78	1	O-Ring
11:2	237-35	1	O-Ring
12	100-7173	2	Pin-Swivel, Front
13	100-7174	2	Pin-Swivel, Rear
14	98-9742	3	Valve-Control, Flow
15	100-7201	2	Cylinder-HYD, Swing
*15:1	100-7221	1	Kit-Seal
15:2	302-19	2	Fitting-Grease
16	340-1	1	Adapter
16:1	237-35	1	O-Ring
16:2	237-42	1	O-Ring
17	100-7168	2	Bent Handle ASM
18	100-7206	2	Straight Handle ASM
19	100-7217	2	Stabilizer Cylinder ASM
*19:1:1	100-7220	1	Kit-Seal
19:2	100-4136	1	Decal-Warning
19:3	302-19	2	Fitting-Grease
20	100-7186	2	Pin-Cylinder, Stabilizer
21	100-7205	1	Valve ASM
22	322-12	3	Screw-HH
23	3296-29	3	Nut-Lock, NI

\* Not illustrated



Sheet No.: A1  
C-2908

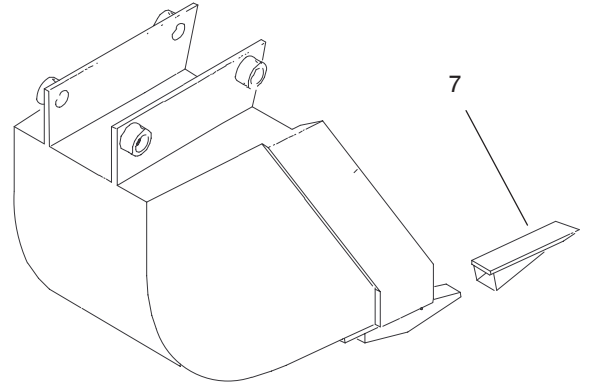
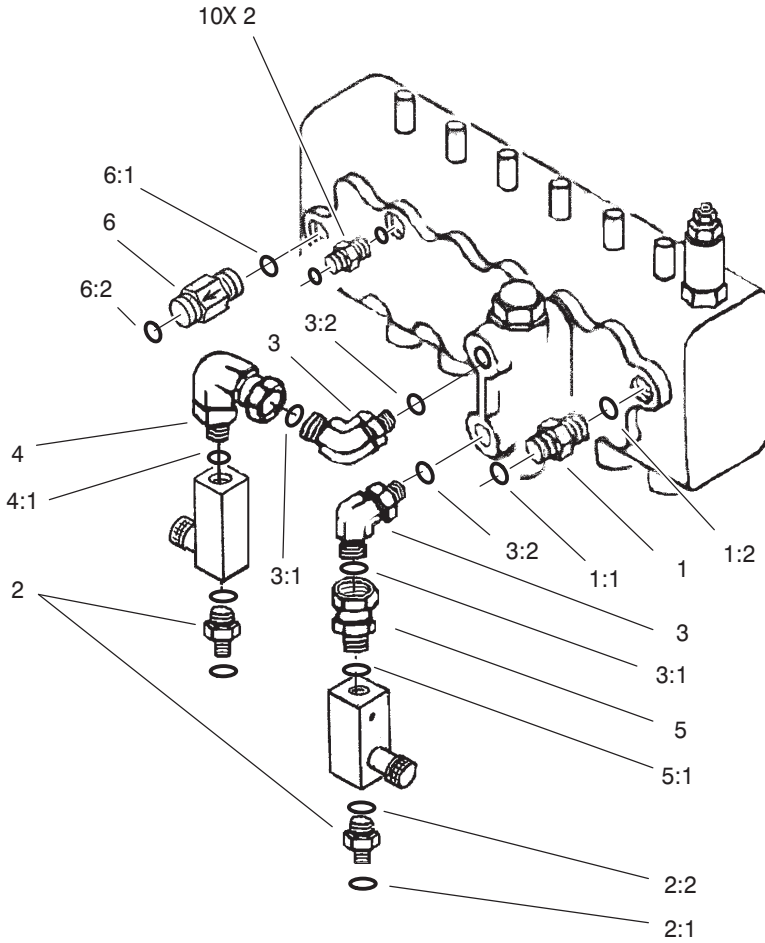
## Valve Assembly No. 100-7205

Ref. No.	Part No.	Qty.	Description
1	100-7226	1	Kit-Seal, Valve
1:1	100-7246	2	O-Ring
2	100-7227	1	Kit-Valve, Relief
3	100-7228	2	Cartridge-Relief
4	100-7229	2	Kit-Lever ASM
5	100-7230	2	Kit-Joystick ASM
6	100-7231	4	Screw
7	100-7232	2	Washer
8	100-8801	6	Kit-Spring, High Force
9	100-8806	4	Screw-Operator

Ref. No.	Part No.	Qty.	Description

PROTOTYPE





Sheet No.: 7

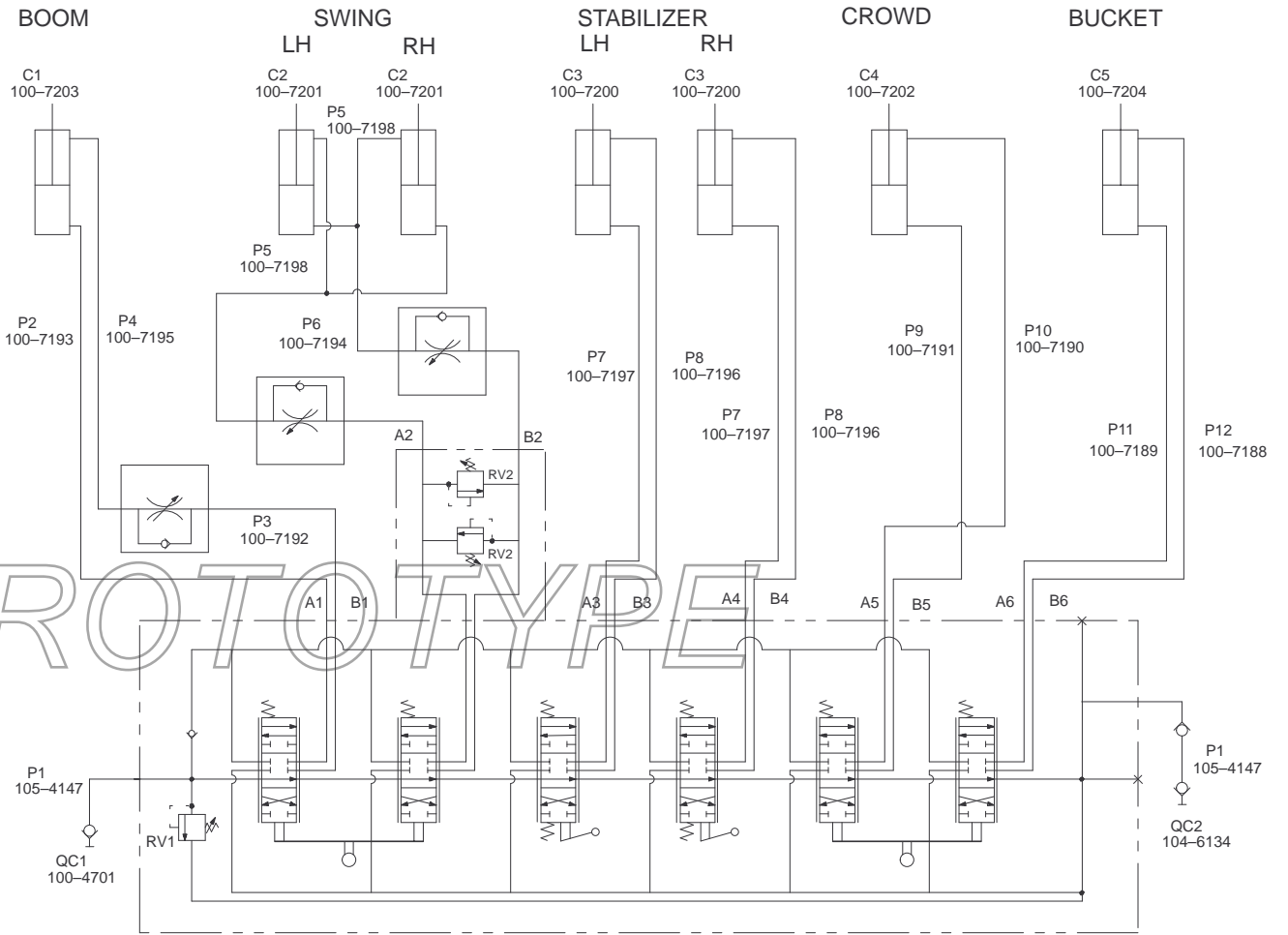
## Hydraulic Fitting and Tooth Assembly

Ref. No.	Part No.	Qty.	Description
1	340-4	1	Adapter
1:1	237-30	1	O-Ring
1:2	237-79	1	O-Ring
2	340-1	12	Adapter
2:1	237-35	1	O-Ring
2:2	237-42	1	O-Ring
3	340-77	2	Fitting-HYD, 90°
3:1	237-22	1	O-Ring
3:2	237-42	1	O-Ring
4	340-110	1	Fitting-Swivel, 90°
4:1	237-42	1	O-Ring
5	100-7214	1	Fitting-Swivel, Straight
5:1	237-42	1	O-Ring
6	104-5946	1	Valve-Check
6:1	237-30	1	O-Ring
6:2	237-79	1	O-Ring
7	100-7233	1	Tooth-Bucket

Ref. No.	Part No.	Qty.	Description

# Hydraulic Schematic

PRESSURE AND SIZI NG CHART					
COMPONENT	FUNCTION	PRESSURE		SIZE	
		PSI	BARS	MM	IN
RV1	-	1950	134	-	-
RV2	-	2050	141	-	-
C1	BOOM	-	-	∅ 50.8/28.6 X 445	
C2	SWING	-	-	∅ 63.5/38.1 X 152	
C3	STABILIZER	-	-	∅ 50.8/28.6 X 324	
C4	CROWD	-	-	∅ 50.8/28.6 X 419	
C5	BUCKET	-	-	∅ 50.8/28.6 X 305	
P1	-	-	-	∅ 13	∅ .50
P2	-	-	-	∅ 6.4	∅ .25
P3	-	-	-	∅ 6.4	∅ .25
P4	-	-	-	∅ 6.4	∅ .25
P5	-	-	-	∅ 6.4	∅ .25
P6	-	-	-	∅ 6.4	∅ .25
P7	-	-	-	∅ 6.4	∅ .25
P8	-	-	-	∅ 6.4	∅ .25
P9	-	-	-	∅ 6.4	∅ .25
P10	-	-	-	∅ 6.4	∅ .25
P11	-	-	-	∅ 6.4	∅ .25
P12	-	-	-	∅ 6.4	∅ .25







*PROTOTYPE*