



# Folding Windshield Kit

## Workman® 1100/2100 and Twister™ Utility Vehicle

Model No. 07293

Model No. 07293R

Form No. 3326-470 Rev A

### Installation Instructions

**Note:** To attach the Folding Windshield Kit, you must have a Canopy Kit (Model No. 07297 or 07297R) installed on your vehicle.

## Assembly

1. Position the machine on a level surface. Set the parking brake, turn the ignition off, and remove the key.



### Caution



If you leave the key in the ignition switch, someone could accidentally start the engine and seriously injure you or other bystanders.

Remove the key from the ignition switch before you do any maintenance.

2. Attach the windshield tube to the front support tubes on the canopy using 2 screws, flat washers, and capped nuts (Fig. 1).
3. Remove the protective film from the windshield.
4. Install the snap-on clips and receiver clips as shown in Figure 1.
5. Hold the rubber clips (Fig. 1) and attach the top of the windshield to the canopy frame.
6. Attach the snap-on clips on the side of the windshield to the canopy frame. Align the clips on the bottom of the windshield with the windshield tube and press the windshield securely into place (Fig. 1).
7. Ensure that all of the clips are secured firmly to the frame.

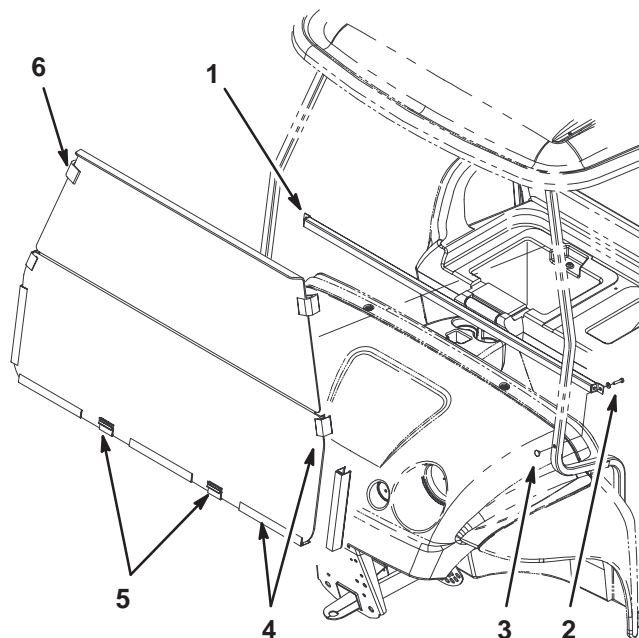


Figure 1

- |                          |                  |
|--------------------------|------------------|
| 1. Windshield tube       | 4. Snap-on clip  |
| 2. Screw and flat washer | 5. Receiver clip |
| 3. Capped nut            | 6. Rubber clip   |

## Maintenance



### Danger



Remove the folding windshield before transporting the vehicle on a trailer.

**Important** To prevent degrading of the windshield, clips, and hinge, clean the windshield with mild soap and water only. Do not use glass cleaners and solvents such as ammonia, alcohol, and petroleum distillates.