



1638XL and 1638XLE

Wheel Horse[®] Lawn Tractor

Model No. 71223-220010001 and Up

Model No. 71226-220010001 and Up

Parts Catalog

Ordering Replacement Parts

To order replacement parts, please supply: the part number, the quantity, and the description of each part desired.

Understanding Reference Numbers

Each identified part in an illustration has a reference number. The reference number for a part also appears in the parts list, along with other information about the part.

This catalog uses two special reference number formats, one to indicate parts in a service assembly and another to indicate the quantity of a given part in an illustration.

Service Assembly Reference Numbers

Parts in service assemblies have reference numbers in the form **a:b**. The **a** represents the reference number of the entire service assembly and the **b** represents a sequential number unique to each part within the service assembly.

For example, a wheel assembly might be identified by reference number **6**, the tire by **6:1**, the valve by **6:2**, and the wheel by **6:3**. When you order the assembly identified by reference number **6**, you receive all parts identified by reference numbers **6:1**, **6:2**, and **6:3**. However, you may also order any part individually.

Reference numbers of this type appear in illustrations and in part lists.

Reference Numbers Indicating Quantity

In an illustration, if a reference number indicates more than one part, the reference number has the form **nX y**. The **n** represents the quantity of the part, the **X** is the multiplication symbol, and the **y** represents the reference number.

For example, in an illustration, the reference number **2X 37** means that two of the parts identified by reference number **37** are indicated.

Contents

Description	Page	Description	Page
Frame and Body Assembly	3	Crankcase Assembly	
Hood and Tower Assembly	4	Engine Briggs and Stratton Model	
Rear Body and Seat Assembly	5	286H77-0121-E1	25
Steering Assembly	6	Oil Filter, Tube and Pump Assembly	
Fixed Steering Assembly	8	Engine Briggs and Stratton Model	
Engine Assembly	9	286H77-0121-E1	26
Traction Clutching Assembly	10	Carburetor Assembly	
Shifting Assembly	11	Engine Briggs and Stratton Model	
5 Speed Transaxle Assembly	12	286H77-0121-E1	27
38in Deck Assembly	13	Air Cleaner Assembly	
38in Deck Blade Drive and Brake Assembly ...	15	Engine Briggs and Stratton Model	
38in Deck Engagement Assembly	16	286H77-0121-E1	28
Height of Cut Assembly	17	Governor Assembly	
Electrical Assembly	18	Engine Briggs and Stratton Model	
Peerless Transaxle Model MST 205-509	20	286H77-0121-E1	29
Electrical Schematic	21	Blower Housing Assembly	
Cylinder Assembly		Engine Briggs and Stratton Model	
Engine Briggs and Stratton Model		286H77-0121-E1	30
286H77-0121-E1	22	Starter Assembly	
Cylinder Head Assembly		Engine Briggs and Stratton Model	
Engine Briggs and Stratton Model		286H77-0121-E1	31
286H77-0121-E1	23	Gasket Assembly	
Crankshaft Assembly		Engine Briggs and Stratton Model	
Engine Briggs and Stratton Model		286H77-0121-E1	32
286H77-0121-E1	24	Carburetor Overhaul Kit Assembly	
		Engine Briggs and Stratton Model	
		286H77-0121-E1	33

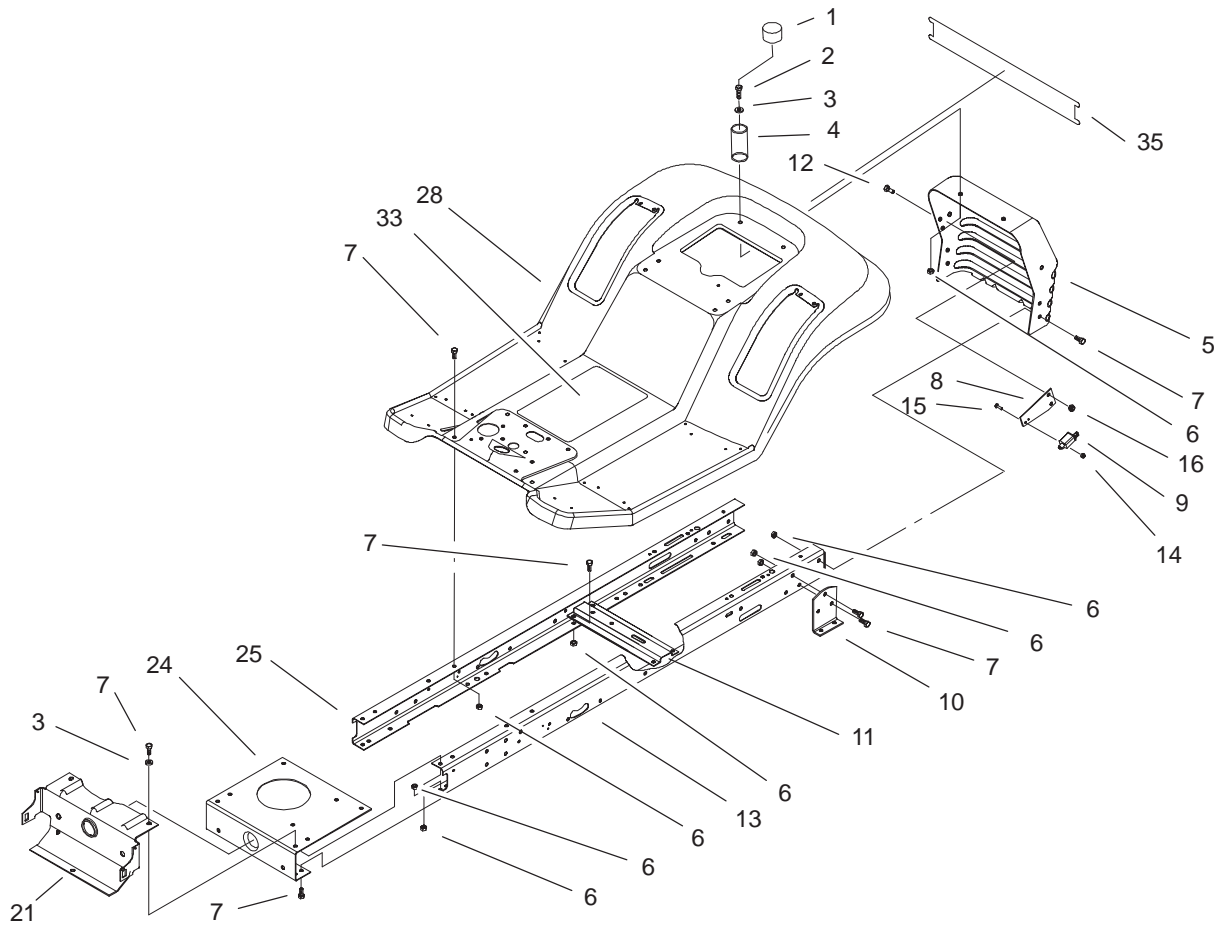
Accessories

Description	Model / Part No.	Description	Model / Part No.
Easy Empty® Bagging Kit	79116 (only on 71223)	Headlight Kit (Std. this Model)	79180
Easy Empty® Bagging Kit	79117	42in Snowblade Kit	79150
Twin Bag Bagger Kit	79101 (on only 71223)	Wheel Weight Kit	59159
Recycler® Kit (Std. this Model)	79170	Anti-Scalp Kit	79182
Hi-Sail Bagging Blade	57-4700	Exhaust Deflector Kit	94-6872
Tire Chains	11-0430		

Part Description Abbreviations

Part descriptions in this catalog may include the following abbreviations.

Abbreviation	Meaning	Abbreviation	Meaning
AR	as required	HYD	hydraulic
ASM	assembly	INC	incorporated
CARR	carriage	LH	left hand
DEG	degrees	NI	nylon insert
FH	flat head	PPH	Phillips pan head
GA	gauge	PTH	Phillips truss head
HF	hex flange	PTO	power take off
HH	hex head	RH	right hand
HHF	hex head flange	SFH	slotted fillister head
HLH	hex lag head	SHH	slotted hex head
HJ	hex jam	SQH	square head
HOC	height-of-cut	SHWH	slotted hex washer head
HS	hex socket	SPH	slotted pan head
HSBH	hex socket button head	SRH	slotted round head
HSFH	hex socket flat head	STD	standard
HSH	hex socket head	TAP	self tapping
HWH	hex washer head	TTH	Torx truss head
HWHTF	hex washer head thread forming	WH	wing head

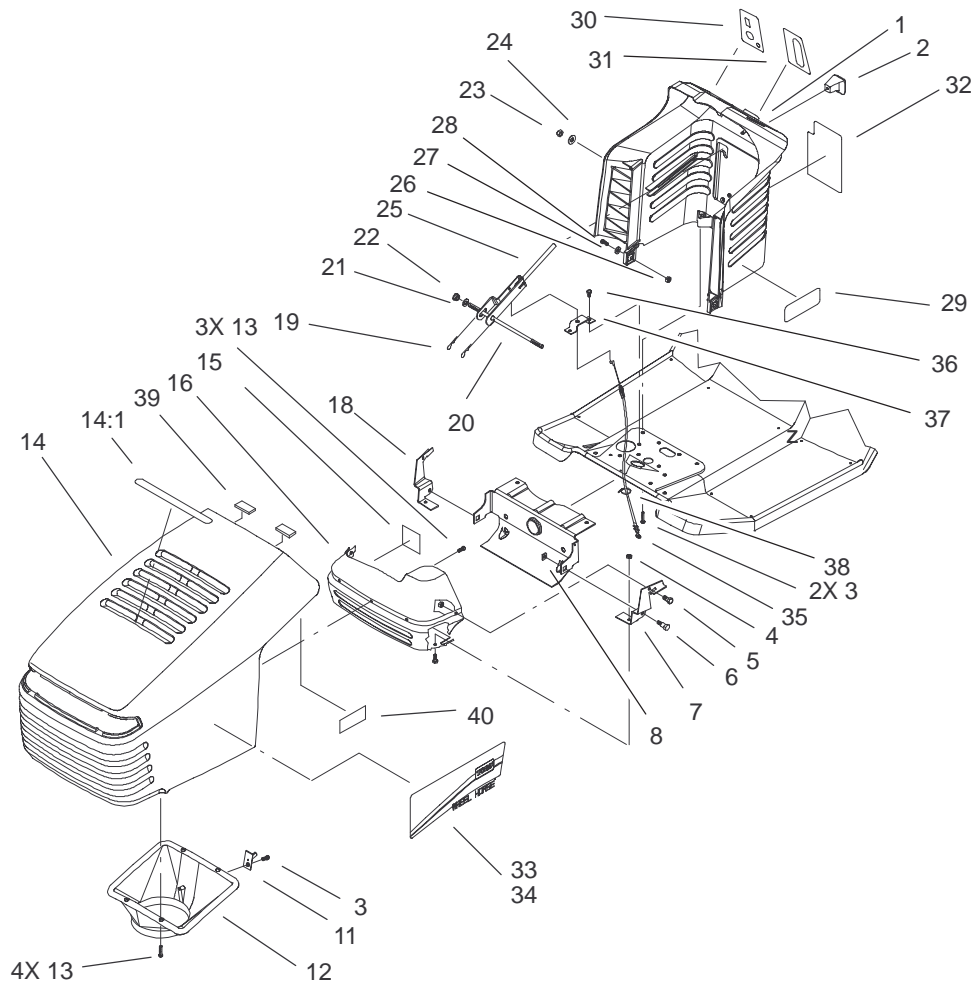


Sheet No.:2

Frame and Body Assembly

Ref. No.	Part No.	Qty.	Description
1	701178	2	Cap-Protector
2	322-5	2	Screw-HH
3	3256-23	4	Washer-Flat
4	88-6220	2	Spring-Compression
5	99-2957-03	1	Panel-Rear, Hitch
6	3296-29	24	Nut-Lock, NI
7	322-3	22	Screw-HH
8	99-2953-03	1	Plate-Switch
9	95-1653	1	Switch-Single Pole
10	88-5260-03	2	Bracket-Transaxle, Mounting
11	88-4620-03	1	Bracket-Idler, Pivot
12	322-3	2	Screw-HH
13	99-2958-03	1	Rail-Frame, LH
14	3296-1	2	Nut-Lock NI
15	3290-392	2	Screw-HHF
16	3296-29	2	Nut-Lock, NI
21	98-3575-03	1	Support-Front, Axle
24	88-4630-03	1	Plate-Engine, Mounting
25	99-2959-03	1	Rail-Frame, RH
28	99-2971	1	Rear Body ASM
33	93-6675	1	Decal - Gear (only on: 71226)

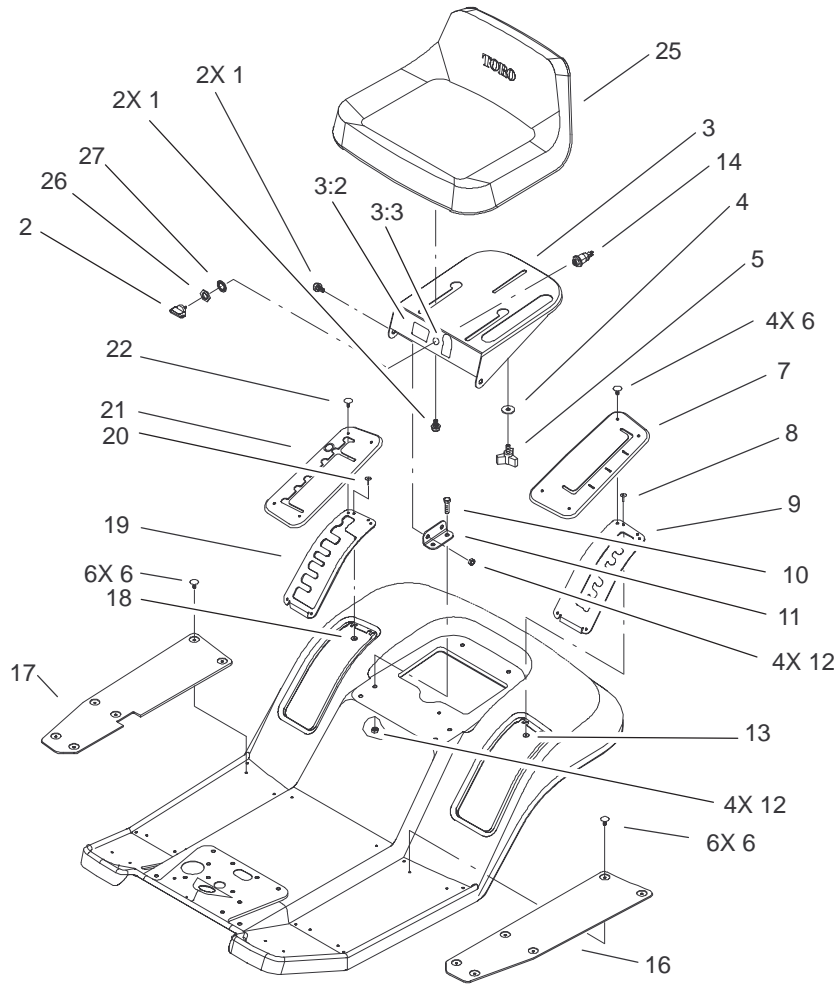
Ref. No.	Part No.	Qty.	Description
33	99-6094	1	Decal-Instruction (only on: 71223)
35	95-0809	1	Decal-Rear, Body



Sheet No.:3

Hood and Tower Assembly

Ref. No.	Part No.	Qty.	Description	Ref. No.	Part No.	Qty.	Description
1	99-1947	1	Tower-Steering	28	322-3	2	Screw-HH
2	94-5565	1	Knob-Shift	29	100-6247	2	Decal-1638 XI
3	46-8091	3	Screw-HWH	30	99-8139	1	Decal-Ignition/Lights (only on: 71223)
4	3296-42	4	Nut-Lock, NI	30	99-8141	1	Decal-Ignition/Lights (only on: 71226)
5	321-2	4	Screw-HH	31	92-2461	1	Decal-Throttle (only on: 71223)
6	28-0540	2	Bolt-Shoulder	31	92-5730	1	Decal-Throttle (only on: 71226)
7	88-6050-03	1	Bracket-Hinge, LH	32	92-2462	1	Decal-Deck, Engage (only on: 71223)
8	3290-496	2	Nut-Retainer	32	93-6673	1	Decal-Deck, Engage (only on: 71226)
11	94-1984	1	Latch-Pin	33	95-0808	1	Decal-Hood, Left
12	93-3891	1	Duct-Hood Air	34	95-0807	1	Decal-Hood, Right
13	46-8090	7	Screw-Plastite	35	99-6837	1	Deck Cable ASM
14	92-8650	1	Hood-V-Chassis Toro	36	9266714	2	Screw-HWH
14:1	92-5748	1	Decal-Air Duct, Toro	37	93-3849	1	Bracket-Upper, Cable
15	92-5782	3	Tape-Foil	38	614249	1	Tie-Strap
16	93-3864-03	1	Shield-Heat	39	94-1980	2	Foam-Hood
18	88-6040-03	1	Bracket-Hinge, RH	40	100-6221	1	Decal-Service, 71223 (only on: 71223)
19	3290-307	2	Pin-Hair				
20	100-7401	1	Rod-Tower, Pivot				
21	3256-24	2	Washer-Flat				
22	3218-3	2	Nut-Jam				
23	100-7402	2	Nut-Cap				
24	100-7403	2	Washer-Flat				
25	88-5190-03	1	Lever-Deck, Engage				
26	3296-29	2	Nut-Lock, NI				
27	3256-23	2	Washer-Flat				

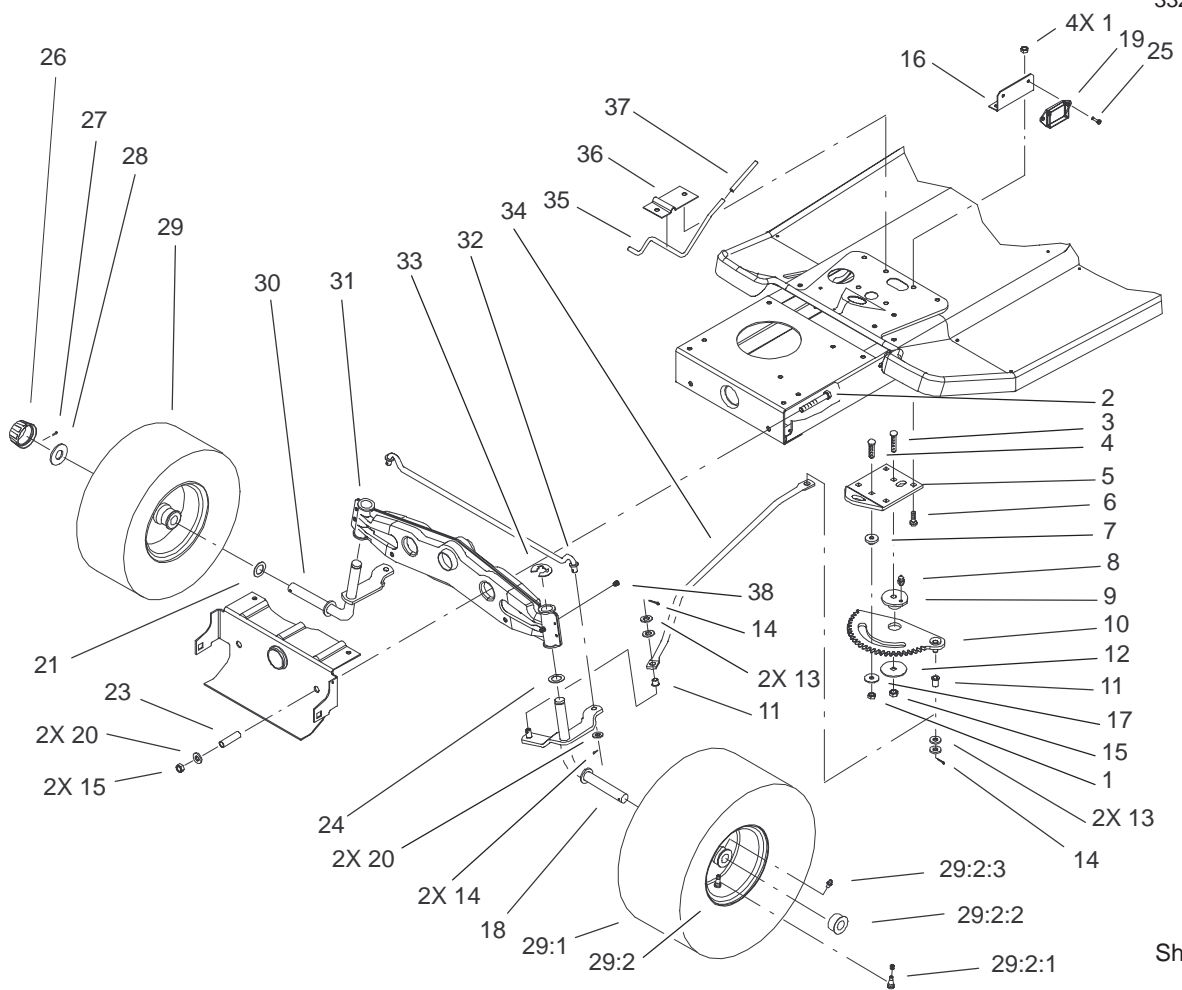


Sheet No.:4

Rear Body and Seat Assembly

Ref. No.	Part No.	Qty.	Description
1	37-8770	4	Bolt-Shoulder
2	63-8360	1	Key-Ignition
3	99-5831	1	Seat Support ASM (only on: 71226)
3	99-5830	1	Seat Support ASM (only on: 71223)
3:2	99-2985	1	Danger-Decal (only on: 71223)
3:2	99-2986	1	Decal-Danger (only on: 71226)
3:3	99-5340	1	Decal-Switch (only on: 71226)
3:3	99-5339	1	Decal (only on: 71223)
4	5-4460	1	Washer-Pivot
5	92-9674	1	Knob
6	3290-479	16	Fastener-Panel
7	93-7657	1	Cover-HOC (only on: 71226)
7	88-5170	1	Cover-HOC (only on: 71223)
8	3290-282	2	Rivet-Pop, Steel
9	88-5030-03	1	Gate-HOC
10	322-3	4	Screw-HH
11	88-4820-03	2	Bracket-Seat Hinge
12	3296-29	6	Nut-Lock, NI

Ref. No.	Part No.	Qty.	Description
13	3269-26	2	Washer-Flat
14	46-5780	1	Switch-Starter
14:1	3254-5	1	Washer-Lock, Internal
14:2	218-461	1	Nut-HH
16	88-5240	1	Mat-Foot, LH
17	88-5220	1	Mat-RH Foot
18	3269-26	2	Washer-Flat
19	88-5020-03	1	Plate-Shift Gate
20	3290-282	2	Rivet-Pop, Steel
21	93-7656	1	Cover-Shift (only on: 71226)
21	88-5160	1	Cover-Shift Gate (only on: 71223)
22	3290-479	4	Fastener-Panel
25	88-3950	1	Seat-Medium Back
26	218-461	1	Nut-HH
27	3254-5	1	Washer-Lock, Internal

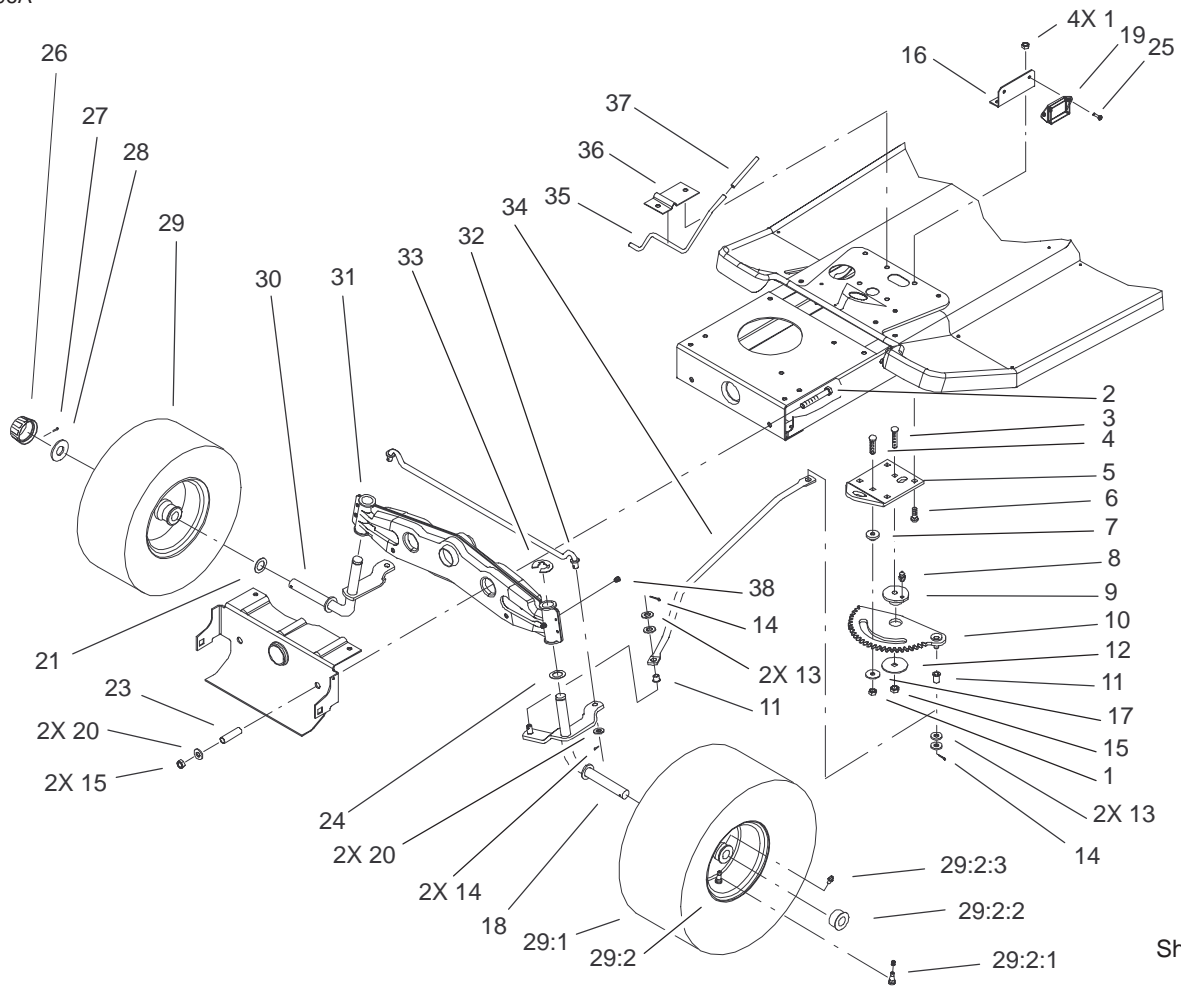


Steering Assembly

Ref. No.	Part No.	Qty.	Description
1	3296-29	5	Nut-Lock, NI
2	323-13	2	Screw-HH
3	3231-4	1	Screw-CARR
4	3230-3	1	Screw-CARR
5	88-5130-03	1	Bracket-Steering Rack
6	3230-2	4	Screw-CARR
7	88-5010	1	Spacer-Steering Rack
8	302-26	1	Zerk
9	88-4670	1	Bushing-Eccentric
10	88-5200	1	Rack-Steering
11	52-2891	2	Bushing-Link, Steering
12	111419	1	Bearing-Washer
13	3256-25	4	Washer-Flat
14	3272-10	4	Pin-Cotter
15	3296-39	3	Nut-Lock, NI
16	99-2956-03	1	Bracket-Module
17	5-4460	1	Washer-Pivot
18	92-7890-03	1	Spindle-LH (only on: 71223)
19	99-3700	1	Module-Nmir
20	3256-24	4	Washer-Flat
21	3-6498	4	Washer-Thrust
23	88-5470	2	Spacer-Front, Axle
24	3-6498	2	Washer-Thrust

Ref. No.	Part No.	Qty.	Description
25	9266714	2	Screw-HWH
26	61-9780	2	Cap-Hub
27	3272-12	2	Pin-Cotter
28	28-2480	2	Washer
29		2	Front Wheel&tire ASM (only on: 71223)
29		2	Front Wheel&tire ASM (only on: 71226)
29:1	99-2988	1	Tire
29:2	88-4370	1	Rim ASM (only on: 71223)
29:2	99-6829	1	Rim ASM (only on: 71226)
29:2:1	232-27	1	Stem-Valve
29:2:2	110513	2	Bearing-Wheel (only on: 71226)
29:2:2	88-4400	2	Bearing-Wheel (only on: 71223)
29:2:3	302-5	1	Fitting-Grease
*29:3	232-39	1	Tube
30	92-7889-03	1	Spindle-RH
31	99-6844-03	1	Axle-Front
32	88-5380	1	Tie Rod-Steering
33	32151-48	2	E-Ring
34	88-4830	1	Link-Drag
35	88-5510	1	Rod-Parking Brake

* Not illustrated

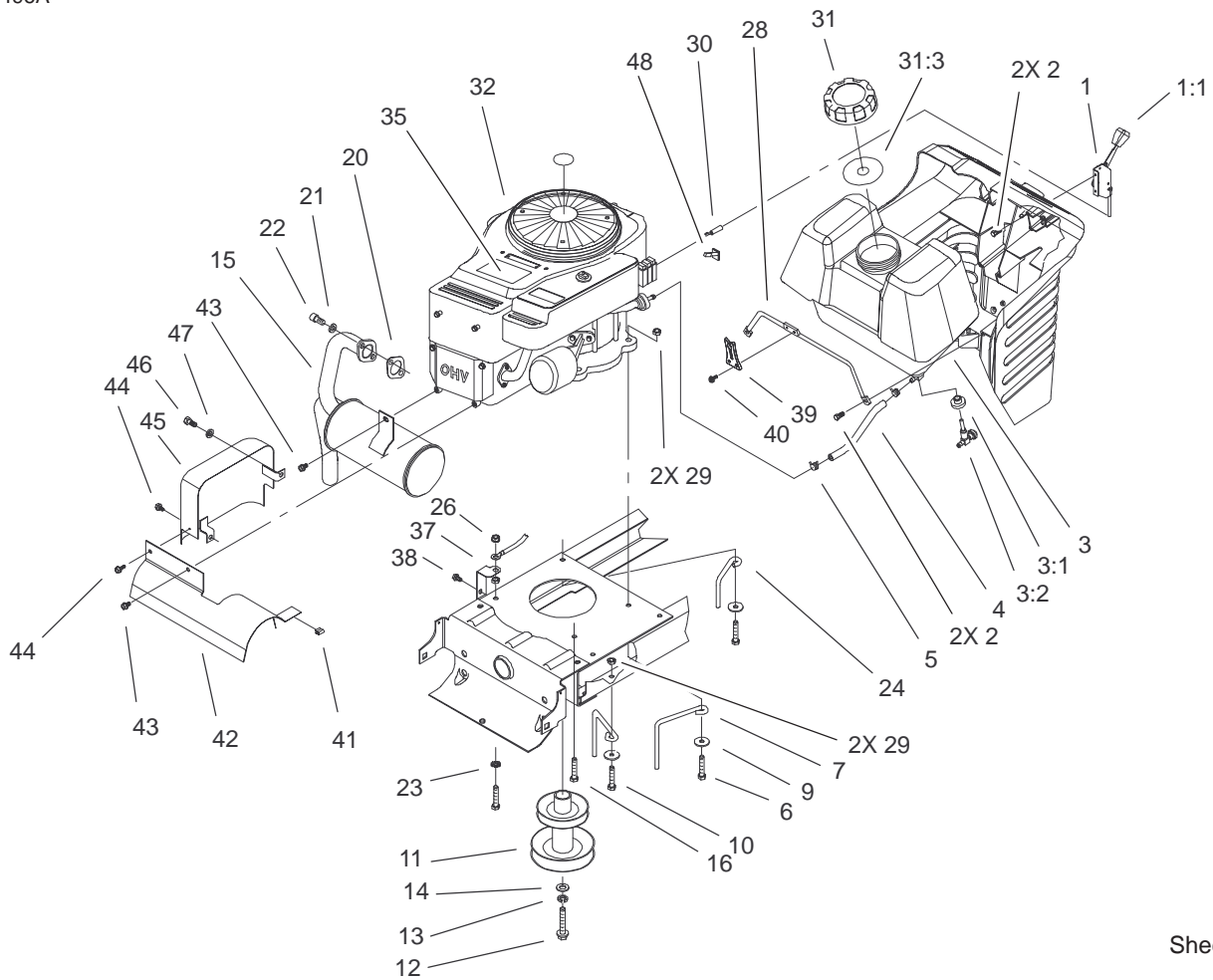


Sheet No.:5

Steering Assembly (Continued)

Ref. No.	Part No.	Qty.	Description
36	88-5520-03	1	Bracket-Parking, Brake
37	88-0890	1	Grip-Bag, Handle
38	302-5	2	Fitting-Grease

Ref. No.	Part No.	Qty.	Description



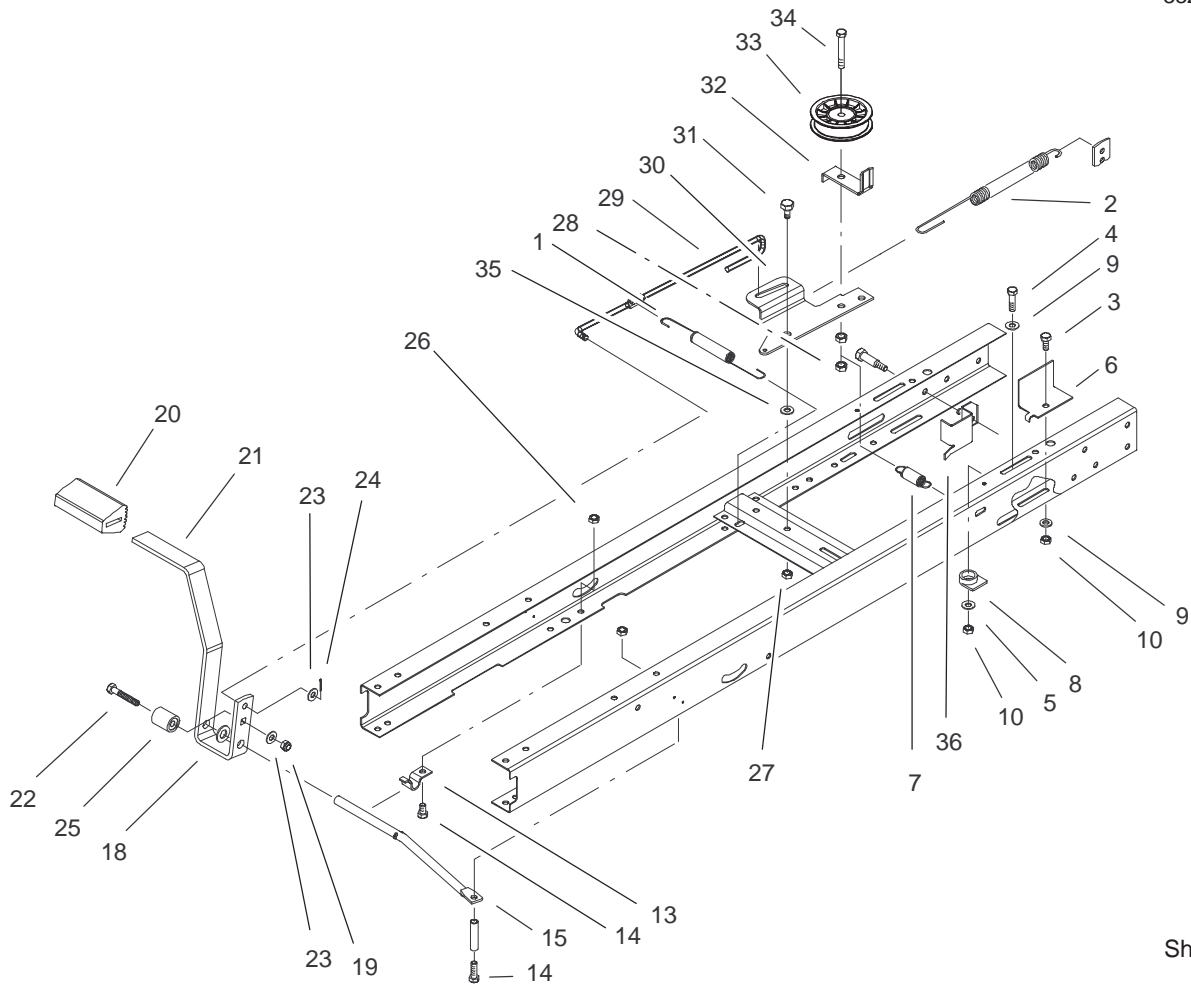
Sheet No.:8

Engine Assembly

Ref. No.	Part No.	Qty.	Description
1	88-4340	1	Control-Throttle
1:1	66-0120	1	Knob
2	27-0220	4	Screw-Special
3	88-3880	1	Gas Tank ASM
3:1	104047	1	Bushing
3:2	104048	1	Valve-Fuel
4	47-2963	1	Hose-Gas
5	2412-98	2	Clamp
6	322-9	3	Screw-HH
7	93-3854	3	Guide-Belt, Engine
9	5-4460	4	Washer-Pivot
10	322-5	2	Screw-HH
11	94-1963	1	Pulley-Engine ASM
12	62-3760	1	Screw-HH
13	3253-22	1	Washer-Lock
14	3256-25	1	Washer-Flat
15	94-1953	1	Muffler-Exhaust
16	9267154	1	Screw
20	88-4410	1	Gasket-Muffler
21	3253-4	2	Washer-Lock
22	3274-10	2	Screw-HSH
23	3255-8	1	Washer-Lock/Ext
24	93-3855	1	Guide-Belt, RH
26	32149-1	2	Nut
28	94-1952	1	Rod-Gas Tank
29	3296-29	4	Nut-Lock, NI

Ref. No.	Part No.	Qty.	Description
30	88-4350	1	Cable-Throttle
31	88-3980	1	Gas Cap ASM
31:3	88-4010	1	Gasket-Cap, Gas
☆32		1	Engine-16 HP Intec, 286H77-0121-E1
35	105-2467	1	Decal-Engine, 16 HP
37	93-3809	1	Bracket-Ground
38	9266714	1	Screw-HWH
39	94-1951	1	Latch-Hood
40	32144-112	2	Screw-HWHTF
41	93-3882	1	Clip-Tinnerman
42	93-3880-03	1	Shield-Muffler
43	9266714	2	Screw-HWH
44	32104-76	2	Screw
45	93-8450-03	1	Exhaust Shield ASM
46	322-3	1	Screw-HH
47	3253-4	1	Washer-Lock
48	88-4490	1	Reducer-Throttle, Rpm (only on: 71226)

☆ Not serviced separately

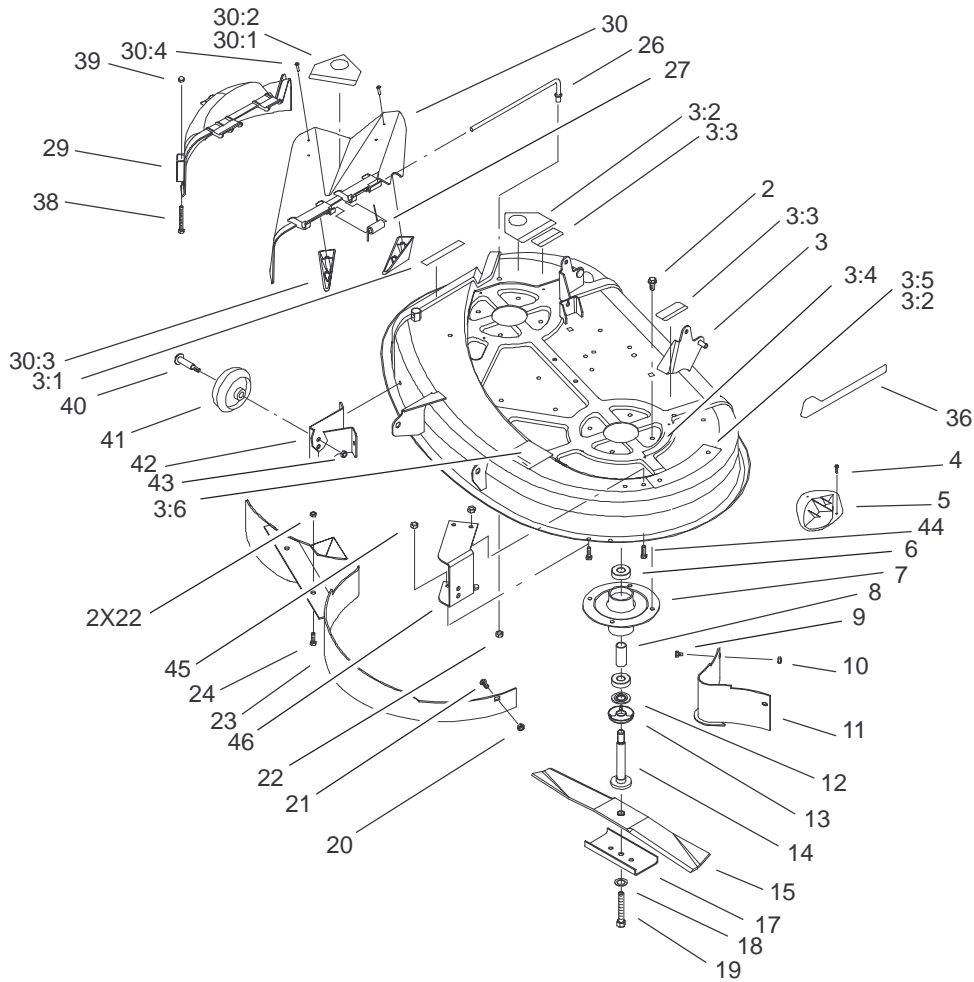


Sheet No.:9

Traction Clutching Assembly

Ref. No.	Part No.	Qty.	Description
1	27-8890	1	Spring-Return
2	94-4294	1	Spring-Brake
3	322-3	1	Screw-HH
4	322-6	1	Screw-HH
5	5-4460	1	Washer-Pivot
6	94-5433	1	Bracket-Belt, Guide
7	88-6330	1	Spring-Extension
8	84-5610	1	Guide-Cable
9	3256-23	2	Washer-Flat
10	3296-29	2	Nut-Lock, NI
13	88-4810	1	Clamp-Shift, Pivot
14	322-3	2	Screw-HH
15	88-5500	1	Rod-Pedal, Pivot
18	3256-26	1	Washer-Flat
19	3296-47	1	Nut-Lock, NI
20	65-2920	1	Pad-Pedal
21	88-5000-03	1	Pedal-Clutch/Brake
22	322-9	1	Screw-HH
23	3256-23	2	Washer-Flat
24	3272-10	1	Pin-Cotter
25	99-6836	1	Spacer-Switch
26	3296-29	2	Nut-Lock, NI
27	3296-29	1	Nut-Lock, NI
28	3296-59	2	Nut-Lock, NI
29	88-5270	1	Rod-Clutch/Brake
30	88-6070	1	Arm-Idler

Ref. No.	Part No.	Qty.	Description
31	37-8770	1	Bolt-Shoulder
32	88-5560	1	Guide-Idler, Belt
33	104-4160	1	Pulley-Idler
34	323-10	1	Screw-HH
35	5-4460	1	Washer-Pivot
36	94-4926	1	Bracket-Belt, Guide

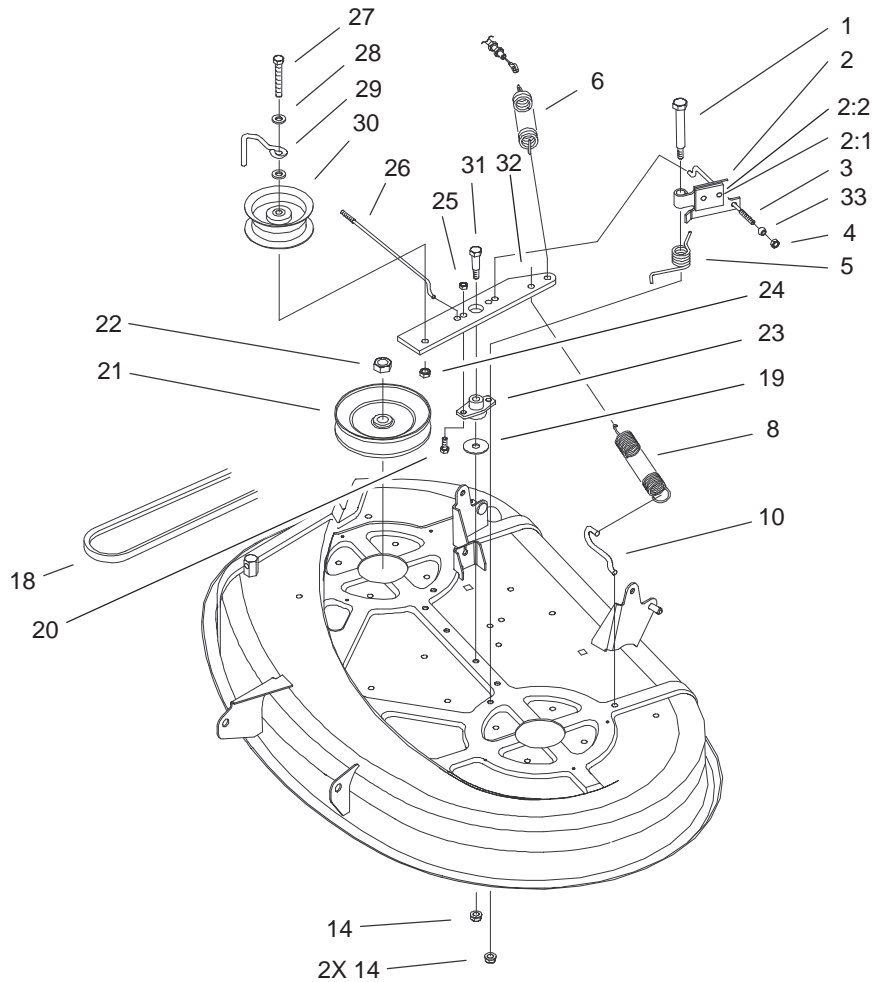


Sheet No.:16

38in Deck Assembly

Ref. No.	Part No.	Qty.	Description
2	32144-41	8	Screw-Taptite
3	99-5846	1	Deck ASM (only on: 71223)
3	99-5847	1	Deck ASM (only on: 71226)
3:1	93-7009	1	Decal-Danger (only on: 71226)
3:1	68-3650	1	Decal-Deflector Danger (only on: 71223)
3:2	93-1122	1	Decal-Danger (only on: 71223)
3:2	93-7010	2	Decal-Danger (only on: 71226)
3:3	55-4300	2	Decal-Warning (only on: 71223)
3:3	93-6674	2	Decal-Warning (only on: 71226)
3:4	93-6677	1	Decal-Shield, Danger (only on: 71226)
3:4	68-3660	1	Decal-Shield Danger (only on: 71223)
3:5	79-3140	1	Decal-Danger (only on: 71223)
3:6	93-6679	1	Decal-Belt, Routing
4	32144-111	8	Screw-PPH

Ref. No.	Part No.	Qty.	Description
5	76-2160	4	Plate-Kicker
6	100-1048	4	Bearing-Ball
7	88-4510	2	Spindle
8	62-3661	2	Spacer-Bearing
9	321-4	2	Screw-HH
10	3296-42	2	Nut-Lock, NI
11	79-1640-03	1	Baffle
12	80-4380	2	Spacer
13	80-4360	2	Shield-Bearing
14	80-4341	2	Spindle-Shaft
15	79-3061	2	Blade
17	80-0510-03	2	Blade-Stiffener
18	3290-465	2	Washer-Belleville
19	26-0671	2	Screw-Blade
20	3296-29	1	Nut-Lock, NI
21	3230-1	1	Screw-CARR
22	3296-39	3	Nut-Lock, NI
23	79-1600-03	1	Baffle
24	323-5	2	Screw-HH
26	95-1661	1	Rod-Pivot
27	57-6950	1	Spring
29	88-4430	1	Recycler Cover
30	93-7695	1	Deflector ASM (only on: 71226)
30	93-0317	1	Deflector ASM (only on: 71223)

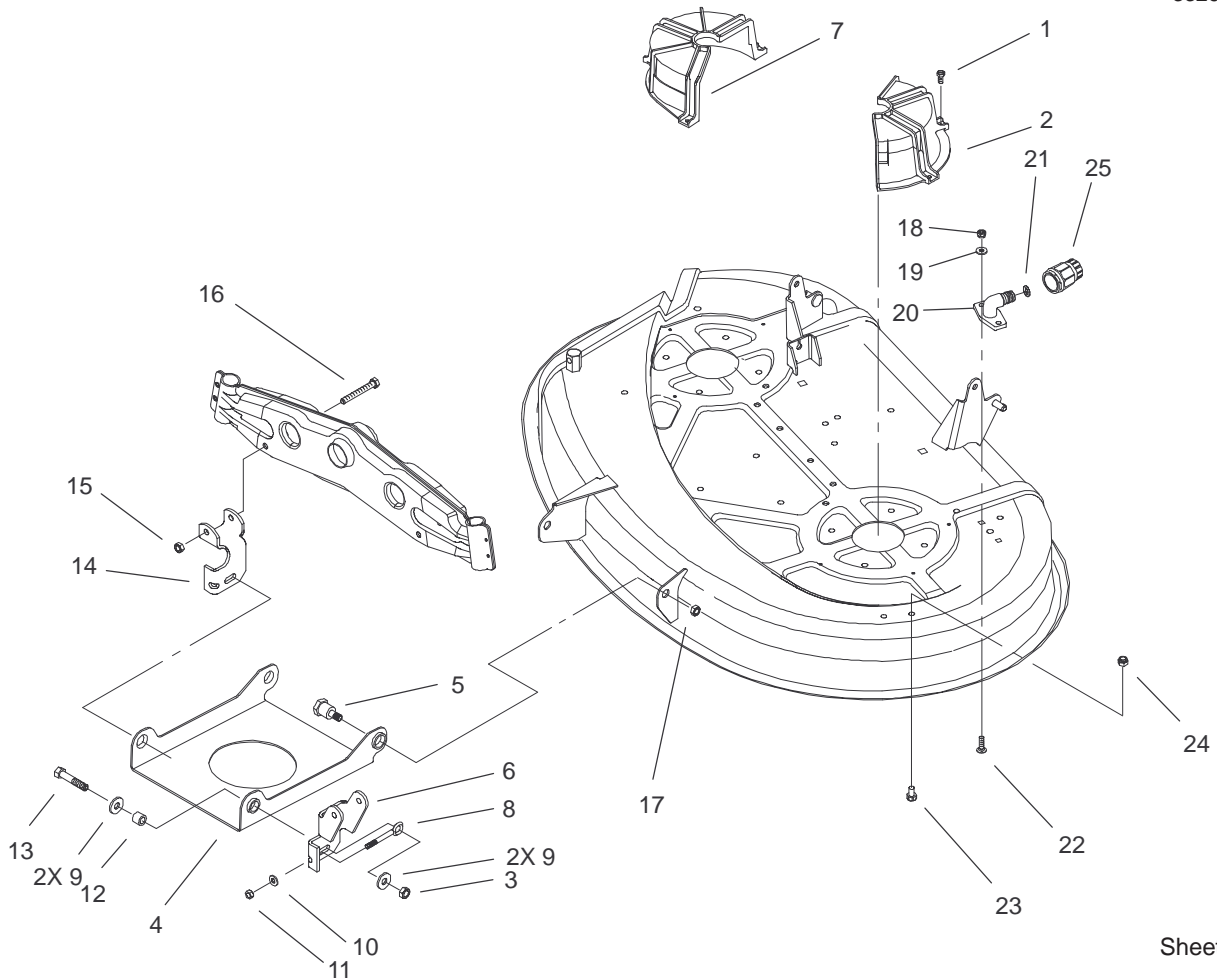


Sheet No.:17

38in Deck Blade Drive and Brake Assembly

Ref. No.	Part No.	Qty.	Description
1	88-4590	2	Bolt-Shoulder
2	88-6100	2	Brake ASM
2:1	3290-282	2	Rivet-Pop, Steel
2:2	56-9830	1	Pad-Brake
3	88-5550	1	Rod-Brake, Deck LH
4	3296-42	2	Nut-Lock, NI
5	88-5910	2	Spring-Torsion
6	88-6130	1	Spring-Deck, Engagement
8	92-8934	1	Spring-Extension
10	88-5970	1	Hook-Return, Spring
14	3296-58	3	Nut-Lock NI
18	88-6250	1	V-Belt
19	3256-68	1	Washer-Flat
20	322-5	2	Screw-HH
21	88-5330	2	Pully-Deck
22	3219-6	2	Nut-Hex
23	88-4980	1	Bushing-Idler, Arm
24	3296-39	1	Nut-Lock, NI
25	3296-29	2	Nut-Lock, NI
26	88-5540	1	Rod-Brake, Deck RH
27	323-12	1	Screw-HH
28	3256-24	2	Washer-Flat
29	88-5070	1	Guide-Idler, Belt
30	88-5630	1	Pulley-Idler, Flat
31	7-0030	1	Bolt-Shoulder

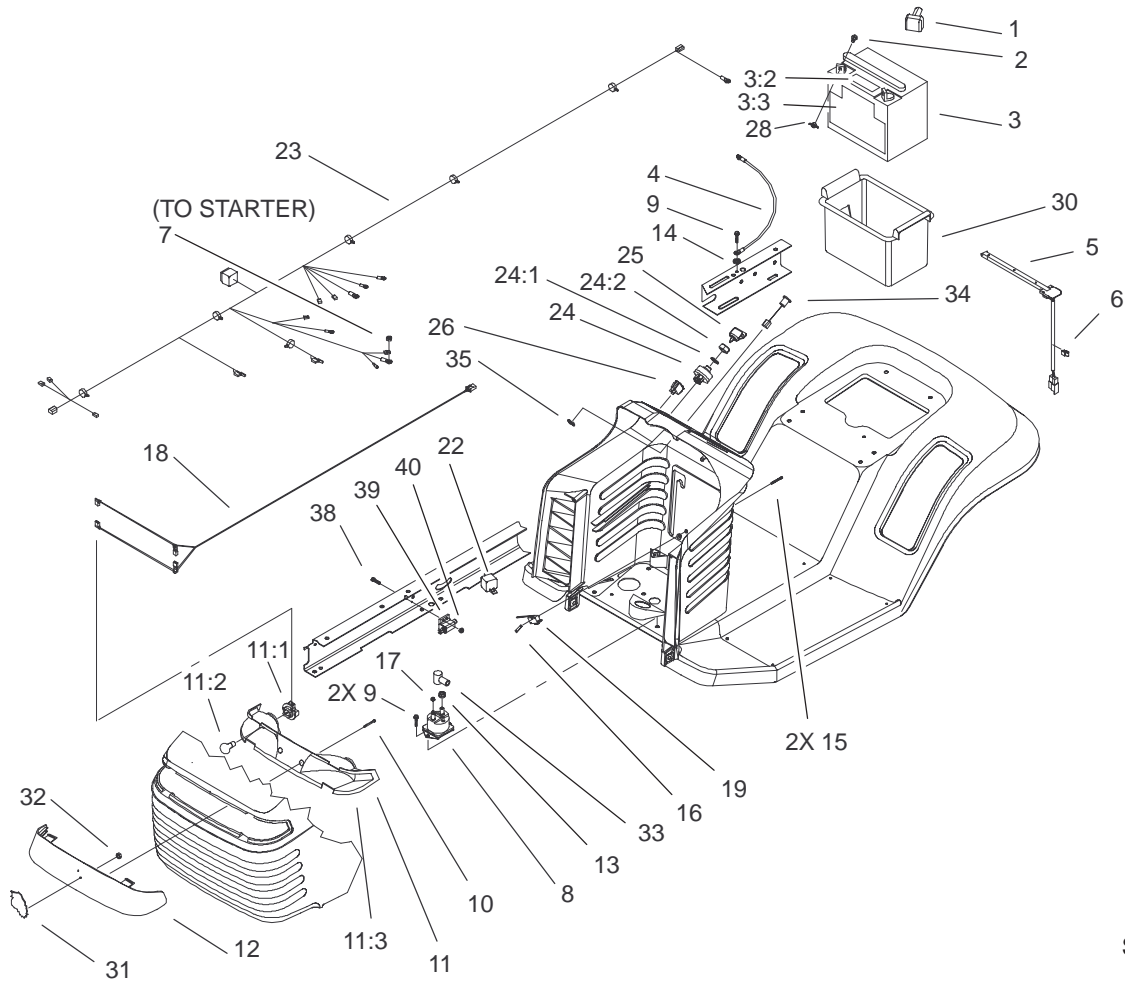
Ref. No.	Part No.	Qty.	Description
32	88-4870-03	1	Arm-Idler, Deck
33	67-0710	2	Ball-Swivel Stop



Sheet No.:18

38in Deck Engagement Assembly

Ref. No.	Part No.	Qty.	Description	Ref. No.	Part No.	Qty.	Description
1	32104-76	5	Screw	23	322-1	2	Screw-HH (only on: 71223)
2	88-4030	1	Guide-Belt, Deck LH	24	3296-29	2	Nut-Lock, NI (only on: 71223)
3	3296-39	2	Nut-Lock, NI	25	95-3270	1	Connector-Hose (only on: 71223)
4	93-3881-03	1	Pan-Front Deck, Suspension				
5	94-5823	2	Bolt-Shoulder				
6	94-1971-03	1	Bracket-Deck Suspension, LH				
7	88-4020	1	Guide-Belt, Deck RH				
8	61-9980	2	Screw-Adjusting				
9	80-6990	4	Washer-Hardened				
10	3256-22	2	Washer-Flat				
11	3296-42	2	Nut-Lock, NI				
12	93-9847	2	Spacer				
13	323-9	2	Screw-HH				
14	94-1970-03	1	Bracket-Deck Suspension, RH				
15	3296-29	2	Nut-Lock, NI				
16	322-12	2	Screw-HH				
17	3296-23	2	Nut-Lock, NI				
18	3296-16	2	Nut-Lock, NI				
19	3256-1	2	Washer-Flat				
20	95-2747	1	Fitting-Washout				
21	46-6290	1	O-Ring				
22	3229-1	2	Screw-CARR				



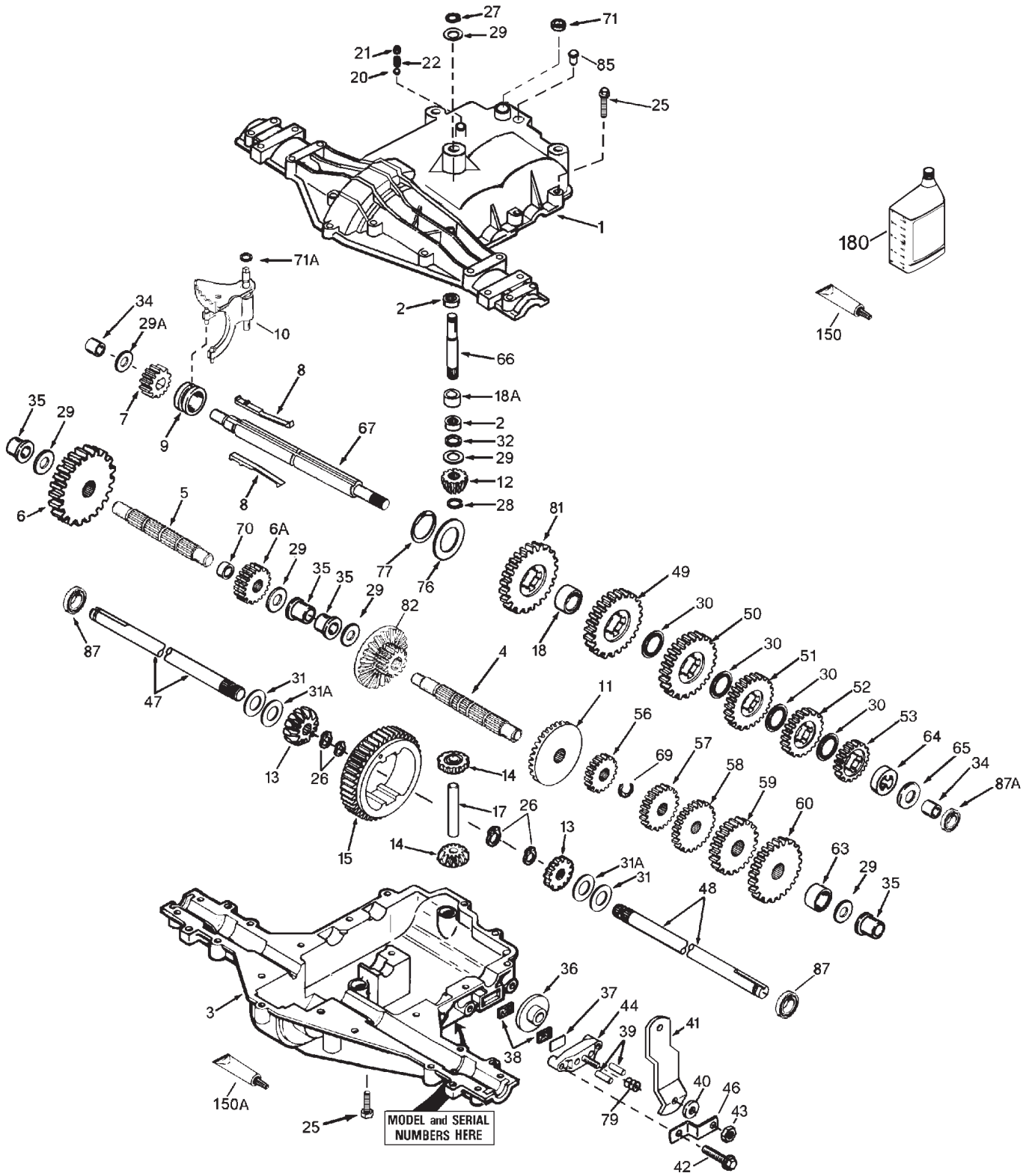
Sheet No.:20

Electrical Assembly

Ref. No.	Part No.	Qty.	Description
1	28-8080	1	Boot-Terminal
2	321-4	2	Screw-HH
3	104-1755	1	Battery-155 Cca
3:2	104-4163	1	Decal-Battery
3:3	104-4164	1	Decal-Battery
4	44-8110	1	Wire ASM
5	38-1420	1	Switch-Seat
6	702366	1	Clip-Wire Retainer
7	32149-2	1	Nut
8	28-4210	1	Solenoid
9	9266714	3	Screw-HWH
10	32144-32	2	Screw
11	88-3970	1	Reflector And Lamp ASM
11:1	111686	2	Socket-Light
11:2	7228	2	Bulb
11:3	93-8741	1	Reflector
12	88-3960	1	Lens-Headlight
13	32149-1	2	Nut
14	3255-7	2	Washer-Lock/Ext
15	93-0539	2	Screw-HH
16	3290-354	1	Nut-Speed
17	32149-8	2	Nut-Keps
18	99-1935	1	Harness-Headlight
19	88-9932	1	Switch-Micro
22	98-7249	1	Relay

Ref. No.	Part No.	Qty.	Description
23	99-6841	1	Harness-Wire, Gear
24	88-9830	1	Key Switch ASM
24:1	3254-5	1	Washer-Lock, Internal
24:2	218-461	1	Nut-HH
25	63-8360	1	Key-Ignition
26	92-8875	1	Switch-Rocker
28	32103-22	2	Nut-Wing
30	88-4040	1	Box-Battery
31	80-2240	1	Emblem-Grille Wheelhorse
32	3290-299	1	Clip
33	93-3190	1	Boot-Terminal, Insulator
34	95-7652	1	Light-Indicator
35	99-6059	1	Clip-Retainer
38	3274-14	2	Screw-HSH
39	65-7410	1	Switch-Single Pole
40	3296-2	2	Nut-Lock

PEERLESS TRANSAXLE MODEL MST 205-509

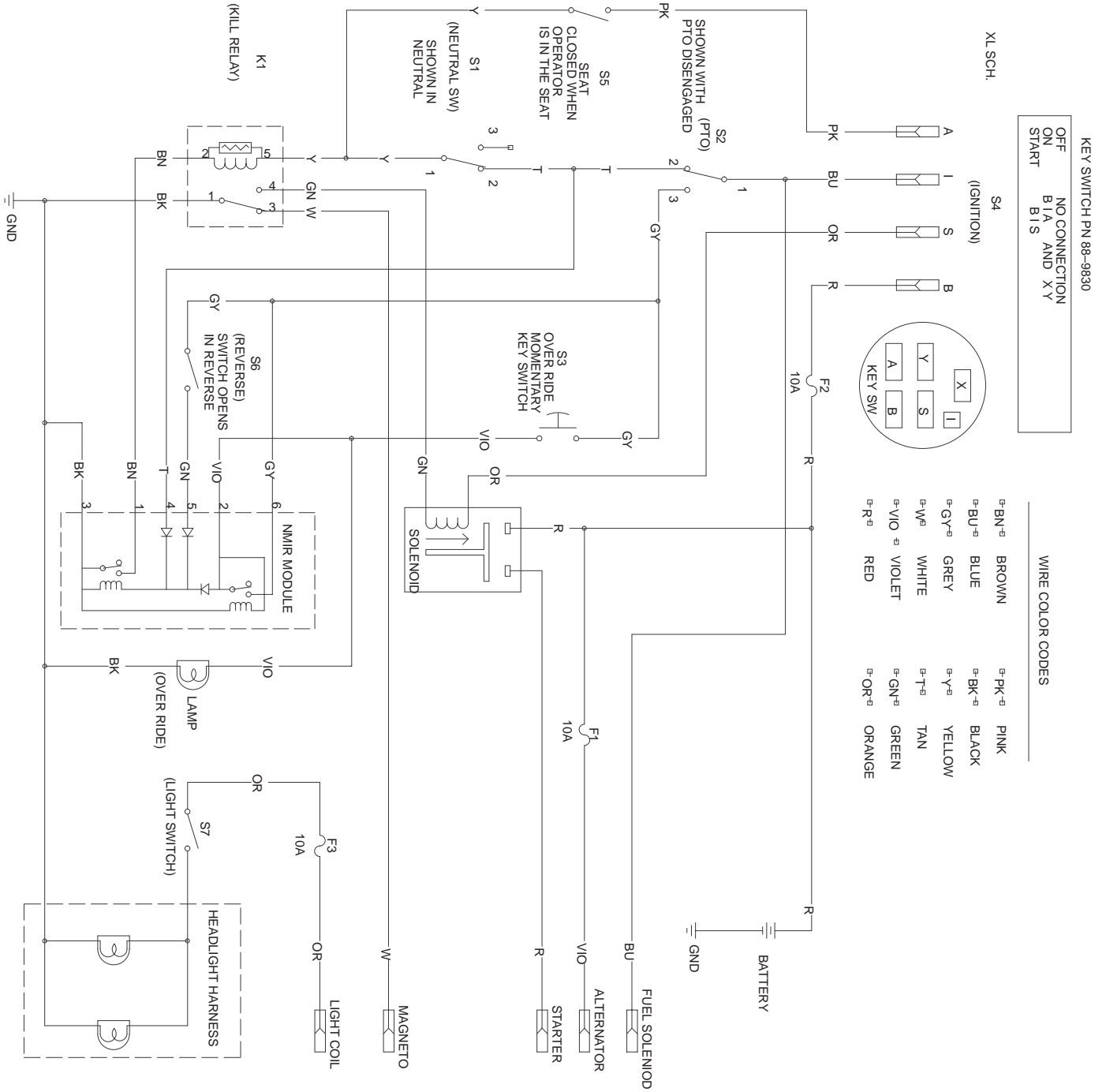


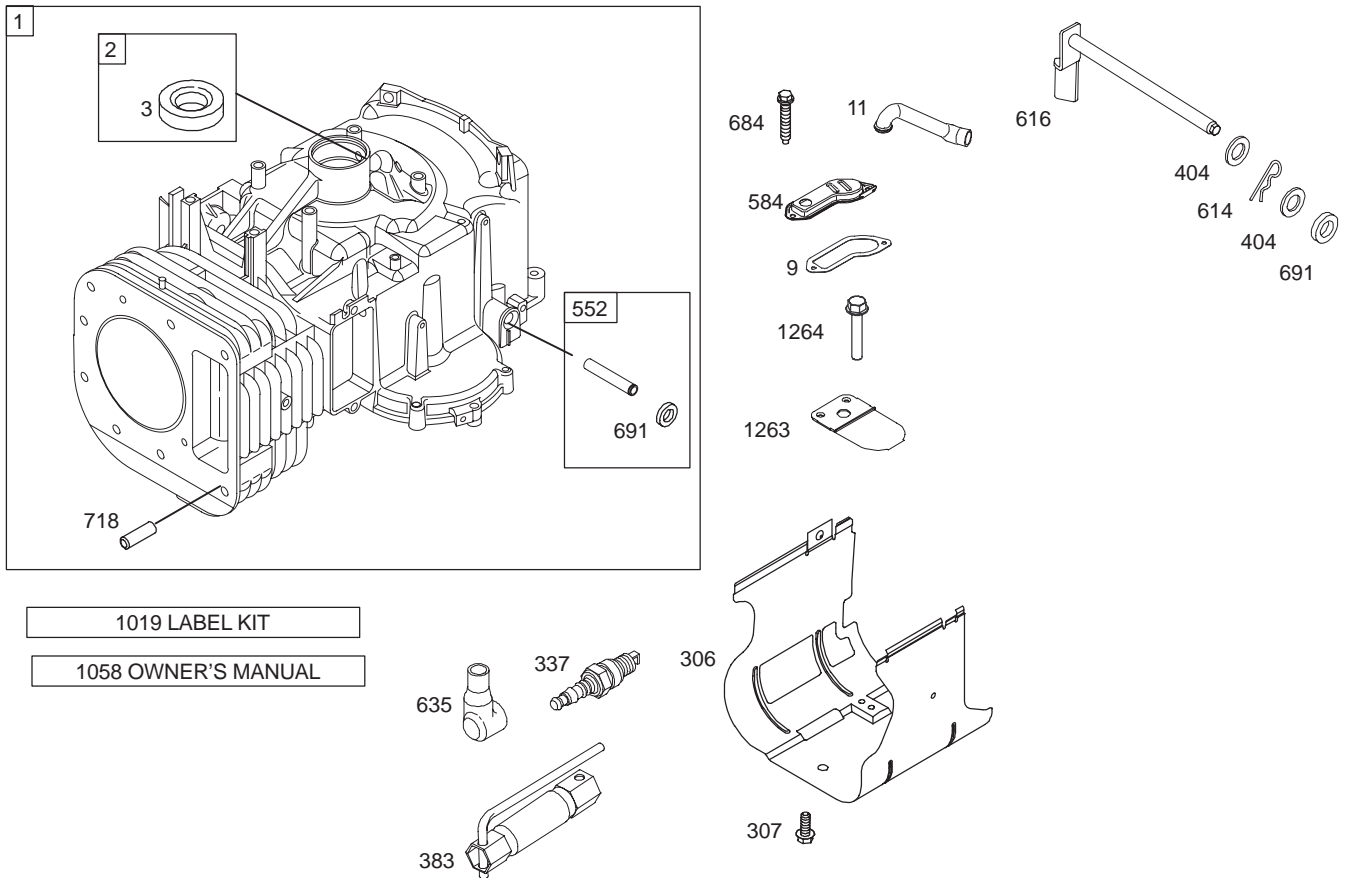
Peerless Transaxle Model MST 205-509

Ref. No.	Part No.	Qty.	Description
1	772137	1	Transaxle Cover
2	780086A	2	Needle Bearing
3	770123	1	Transaxle Case
4	776395	1	Countershaft
5	776397	1	Output Shaft
6	778331	1	Spur Gear (38 teeth)
6A	778332	1	Spur Gear (15 teeth-steel)
7	778330	1	Spur Gear (11 teeth-steel)
8	792136A	2	Shift Key
9	784352	1	Shift Collar
10	784378	1	Shift Rod & Fork
11	778334	1	Bevel Gear (30 teeth)
12	778309	1	Input Bevel Pinion (13 teeth)
13	778327	1	Bevel Gear (16 teeth-steel)
		2	(Incl. 14)
14	778327	1	Bevel Gear (16 teeth-steel)
		2	(Incl. 13)
15	778312A	1	Ring Gear (43 teeth)
17	786139	1	Drive Pin
18	786102	1	Spacer
18A	786175	1	Spacer
20	792077	1	Ball 5/16" dia
21	792078	1	Set Screw
22	792079	1	Spring
25	792073	18	Screw
26	792125	4	Retaining Ring (pkg of 2)
27	792035	1	Retaining Ring
28	788040	1	Retaining Ring
29	780072	6	Washer
29A	780160	1	Washer
30	780108	4	Washer
31	780001	2	Washer (.056 wide)
		2	(USE AS NEEDED)
31A	780195	2	Flat Washer (.062 wide)
32	788083	1	Oil Seal
34	780194	2	Bushing
35	780193	4	Flanged Bushing
36	790075	1	Brake Disk
37	790007	1	Brake Pad Plate
38	799021	2	Brake Pad (pkg of 2)
39	786026	2	Dowel Pin
40	792076A	1	Flat Washer

Ref. No.	Part No.	Qty.	Description
41	790080	1	Brake Lever
42	792073	2	Screw
43	792075	1	Locknut
44	790025	1	Brake Pad Holder
46	786086	1	Brake Lever Bracket
47	774690	1	Axle (11-15/16" long)
48	774691	1	Axle (16-1/2" long)
49	778356	1	Spur Gear (29 teeth-steel)
50	778354	1	Spur Gear (23 teeth-steel)
51	778344	1	Spur Gear (20 teeth)
52	778350	1	Spur Gear (16 teeth-steel)
53	778346	1	Spur Gear (15 teeth-steel)
56	778355	1	Spur Gear (11 teeth-steel)
57	778353	1	Spur Gear (17 teeth-steel)
58	778343	1	Spur Gear (20 teeth)
59	778349	1	Spur Gear (24 teeth-steel)
60	778345	1	Spur Gear (25 teeth)
63	786071	1	Countershaft Spacer
64	786072	1	Brake Shaft Spacer
65	780189	1	Washer
66	776394	1	Input Shaft
67	776396	1	Shifter & Brake Shaft
69	792170	1	Retaining Ring
70	786172	1	Spacer
71	788069	1	Square Cut Ring
71A	788092	1	"O" Ring
76	780090	1	Washer
77	788078A	1	Inverted Retaining Ring
79	792144	1	Spring
81	778338	1	Spur Gear (27 teeth)
82	778333	1	Bevel & Spur Gear (30 & 13 teeth)
85	792154	1	Pipe Plug
87	788088	2	Oil Seal
87A	788089	1	Oil Seal
150	788093	1	Liquid Gasket RTV Silicone
150A	788094	1	Liquid Gasket Loctite #242
180	730229A	1	Gear Oil 80W90

Electrical Schematic





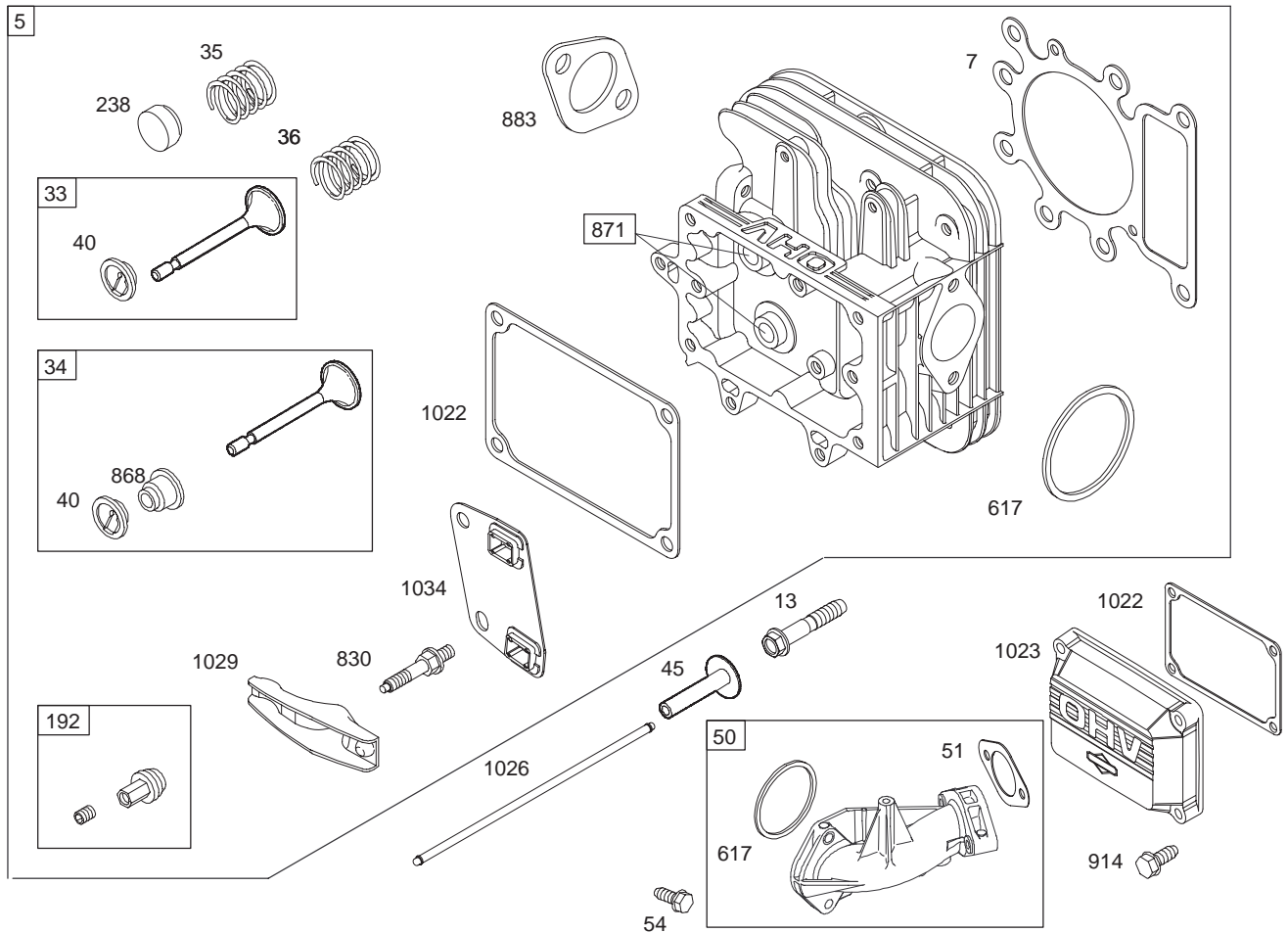
Assemblies include all parts shown in frames.

Cylinder Assembly Engine Briggs and Stratton Model 286H77-0121-E1

Ref. No.	Part No.	Qty.	Description
1	697132	1	Cylinder Assembly
2	399265	1	Kit-Bushing/Seal (Magneto Side)
★3	391086	1	Seal-Oil (Magneto Side)
★9	697109	1	Gasket-Breather
11	697113	1	Tube-Breather
306	697107	1	Shield-Cylinder
307	691003	1	Screw (Cylinder Shield)
337	491055	1	Plug-Spark
383	89838	1	Wrench-Spark Plug
404	691691	1	Washer (Governor Crank)
552	697144	1	Bushing-Governor Crank
584	697112	1	Cover-Breather Passage
614	691620	1	Pin-Cotter
616	692012	1	Crank-Governor
635	691909	1	Boot-Spark Plug
684	697157	1	Screw (Breather Passage Cover)

Ref. No.	Part No.	Qty.	Description
★691	692407	1	Seal-Governor Shaft
718	690959	1	Pin-Locating
1019	697143	1	Kit-Label
1058	275038	1	Owner's Manual
1263	697124	1	Reed-Breather
1264	697104	1	Screw (Breather Reed)

★ Included in Engine Gasket Set-Ref. 358.



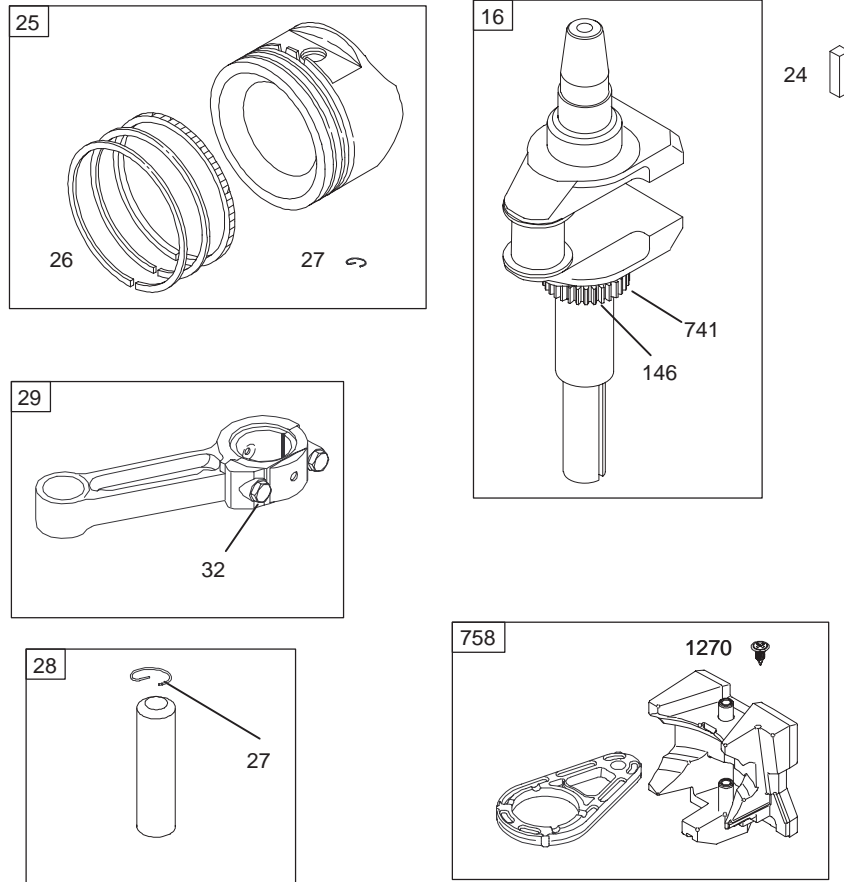
Cylinder Head Assembly Engine Briggs and Stratton Model 286H77-0121-E1

Ref. No.	Part No.	Qty.	Description
5	691165	1	Head-Cylinder
Δ★7	273280	1	Gasket-Cylinder Head
13	690360	1	Screw
33	495856	1	Valve-Exhaust
34	495857	1	Valve-Intake
35	691279	1	Spring-Valve (Intake)
36	691279	1	Spring-Valve (Exhaust)
40	691752	1	Retainer-Valve
45	690564	1	Tappet-Valve
50	690193	1	Manifold-Intake
★Δ◆51	692137	1	Gasket-Intake
54	691148	1	Screw (Intake Manifold)
192	691986	1	Adjustor-Rocker Arm
238	691843	1	Cap-Valve
★617	692138	1	Seal-O Ring (Intake Manifold)
830	691095	1	Stud-Rocker Arm
Δ★868	690968	1	Seal-Valve
871	690969	1	Bushing-Valve Guide

Ref. No.	Part No.	Qty.	Description
883	692236	1	Gasket-Exhaust
914	690960	1	Screw (Rocker Cover)
★1022	272475	1	Gasket-Rocker Cover
1023	692492	1	Cover-Rocker
1026	692003	1	Rod-Push (Intake)
	692011	1	Rod-Push (Exhaust)
1029	691751	1	Arm-Rocker
1034	690822	1	Guide-Push Rod

Δ Included in Valve Gasket Set-Ref. 1095.

★ Included in Engine Gasket Set-Ref. 358.

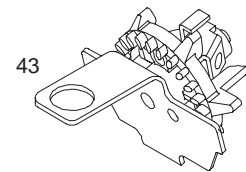
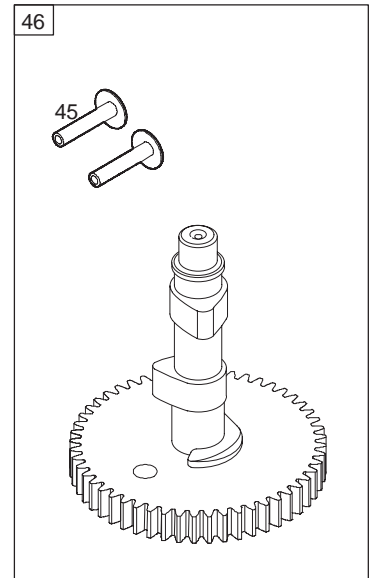
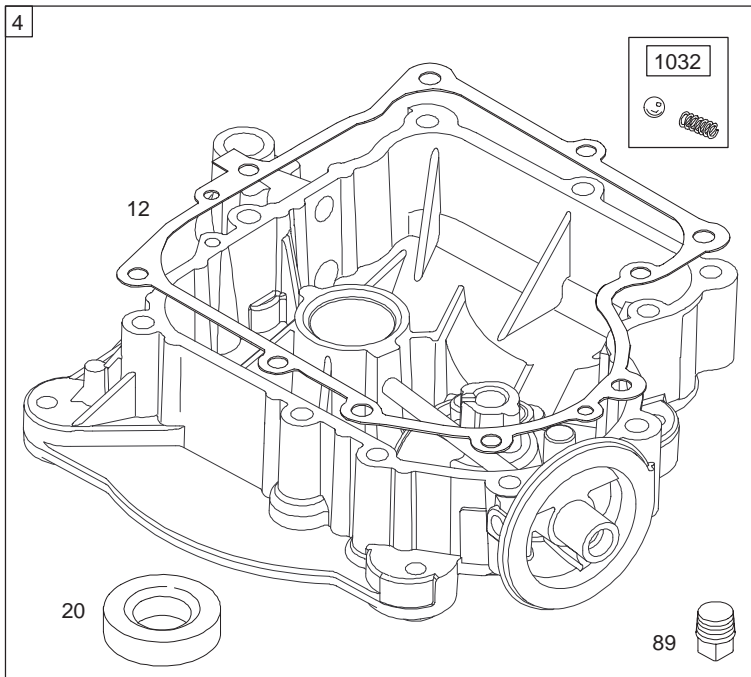


Assemblies include all parts shown in frames.

Crankshaft Assembly Engine Briggs and Stratton Model 286H77-0121-E1

Ref. No.	Part No.	Qty.	Description
16	697127	1	Crankshaft
24	222698	1	Key-Flywheel
25	697114	1	Piston Assembly (Standard)
	697116	1	Piston Assembly (.010" Oversize)
	697117	1	Piston Assembly (.020" Oversize)
	697118	1	Piston Assembly (.030" Oversize)
26	697115	1	Ring Set (Standard)
	697119	1	Ring Set (.010" Oversize)
	697120	1	Ring Set (.020" Oversize)
	697121	1	Ring Set (.030" Oversize)
27	697199	1	Lock-Piston Pin
28	697099	1	Pin-Piston (Standard)

Ref. No.	Part No.	Qty.	Description
29	697126	1	Rod-Connecting (Standard)
	697264	1	Rod-Connecting (.020" Undersize)
32	692852	1	Screw (Connecting Rod)
146	690979	1	Key-Timing
741	697128	1	Gear-Timing
758	697134	1	Counterweight
1270	697156	1	Plug-AVS Counterweight



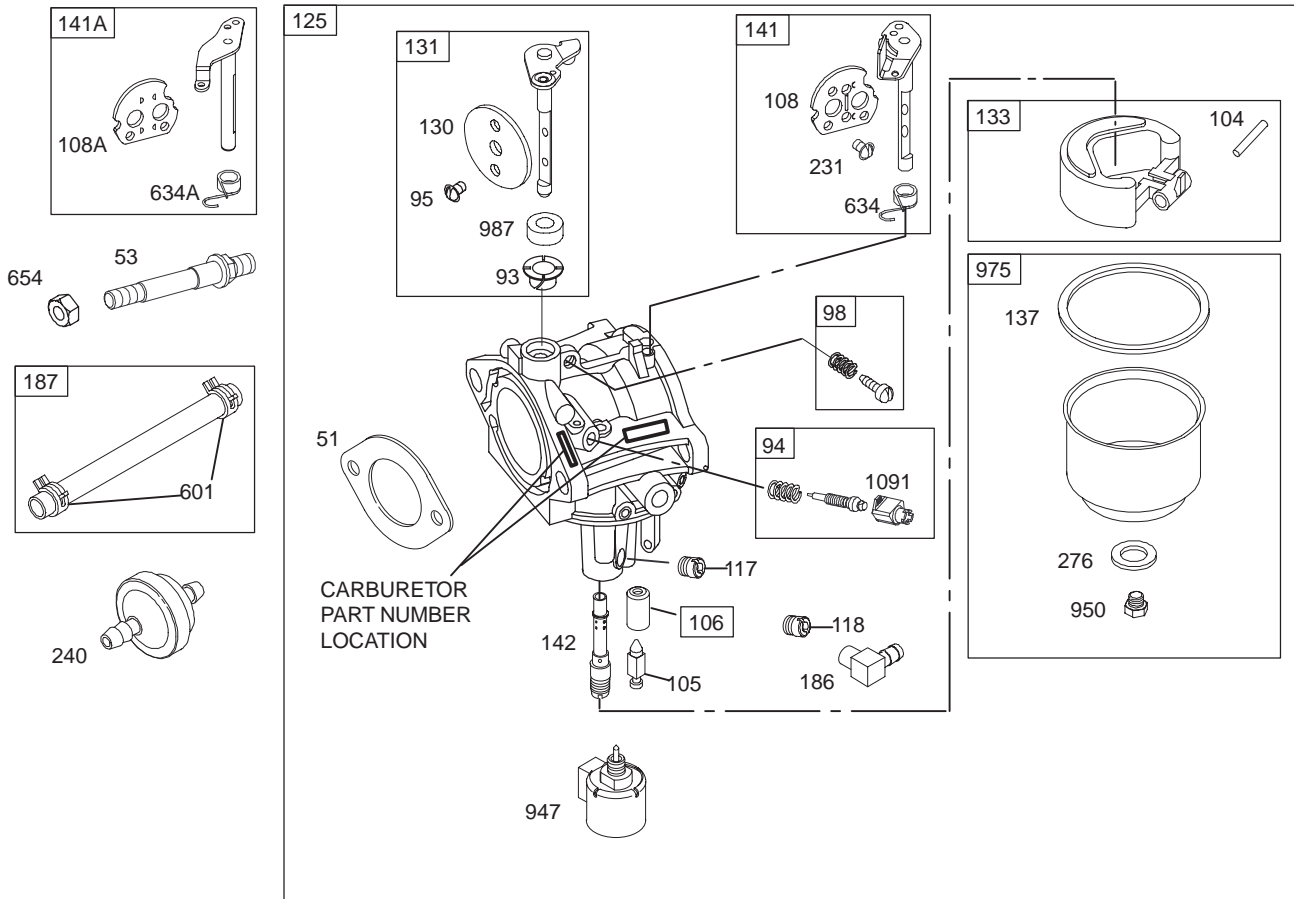
Assemblies include all parts shown in frames.

Crankcase Assembly Engine Briggs and Stratton Model 286H77-0121-E1

Ref. No.	Part No.	Qty.	Description
4	697188	1	Sump-Engine
★12	697110	1	Gasket-Crankcase
15	690946	1	Plug-Oil Drain
★20	690947	1	Oil Seal (PTO Side)
22	692125	1	Screw (Engine Sump)
43	691968	1	Governor/Oil Slinger
45	690564	1	Tappet-Valve
46	697139	1	Camshaft
89	690283	1	Plug-Oil
1032	491710	1	Ball-Oil Pump

Ref. No.	Part No.	Qty.	Description

★ Included in Engine Gasket Set-Ref. 358.



Assemblies include all parts shown in frames.

Carburetor Assembly Engine Briggs and Stratton Model 286H77-0121-E1

Ref. No.	Part No.	Qty.	Description
★△◆	51	1	Gasket-Intake
	53	1	Stud (Carburetor)
●	93	1	Bushing-Throttle Shaft
	94	1	Kit-Idle Mixture
●	95	1	Screw (Throttle Valve)
	98	1	Kit-Idle Speed
●	104	1	Pin-Float Hinge
●	105	1	Valve-Float Needle
●	106	1	Seat-Inlet
	108	1	Valve-Choke (Manual Choke)
108A	692344	1	Valve-Choke (Choke A Matic)
●	117	1	Jet-Main (Standard)
	118	1	Jet-Main (High Altitude)
125	697190	1	Carburetor
	130	1	Valve-Throttle
	131	1	Kit-Throttle Shaft
	133	1	Float-Carburetor
◆	137	1	Gasket-Float Bowl

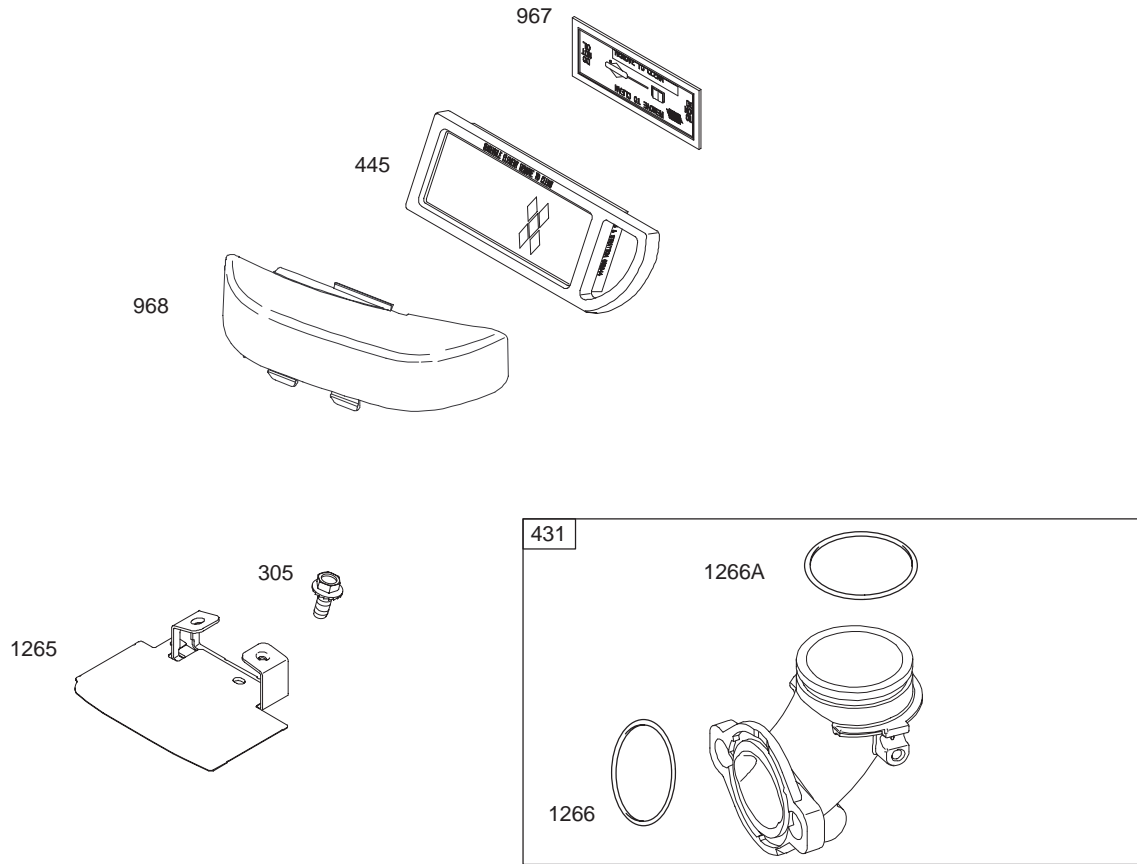
Ref. No.	Part No.	Qty.	Description
	141	1	Kit-Choke Shaft (Manual Choke)
	141A	1	Kit-Choke Shaft (Choke A Matic)
●	142	1	Nozzle-Carburetor
	186	1	Connector-Hose
	187	1	Line-Fuel (Cut to Required Length)
●	231	1	Screw (Choke Valve)
	240	1	Filter-Fuel
◆	276	1	Sealing Washer
	601	1	Clamp-Hose
●	634	1	Spring/Seal Assembly
●	634A	1	Spring/Seal Assembly
	654	1	Nut (Carburetor)
	947	1	Solenoid-Fuel
	950	1	Screw (Float Bowl)
	975	1	Bowl-Float
●	987	1	Seal-Throttle Shaft
	1091	1	Cap-Limiter

△ Included in Valve Gasket Set-Ref. 1095.

★ Included in Engine Gasket Set-Ref. 358.

● Included in Carburetor Overhaul Kit-Ref. 121.

◆ Included in Carburetor Gasket Set-Ref. 977.



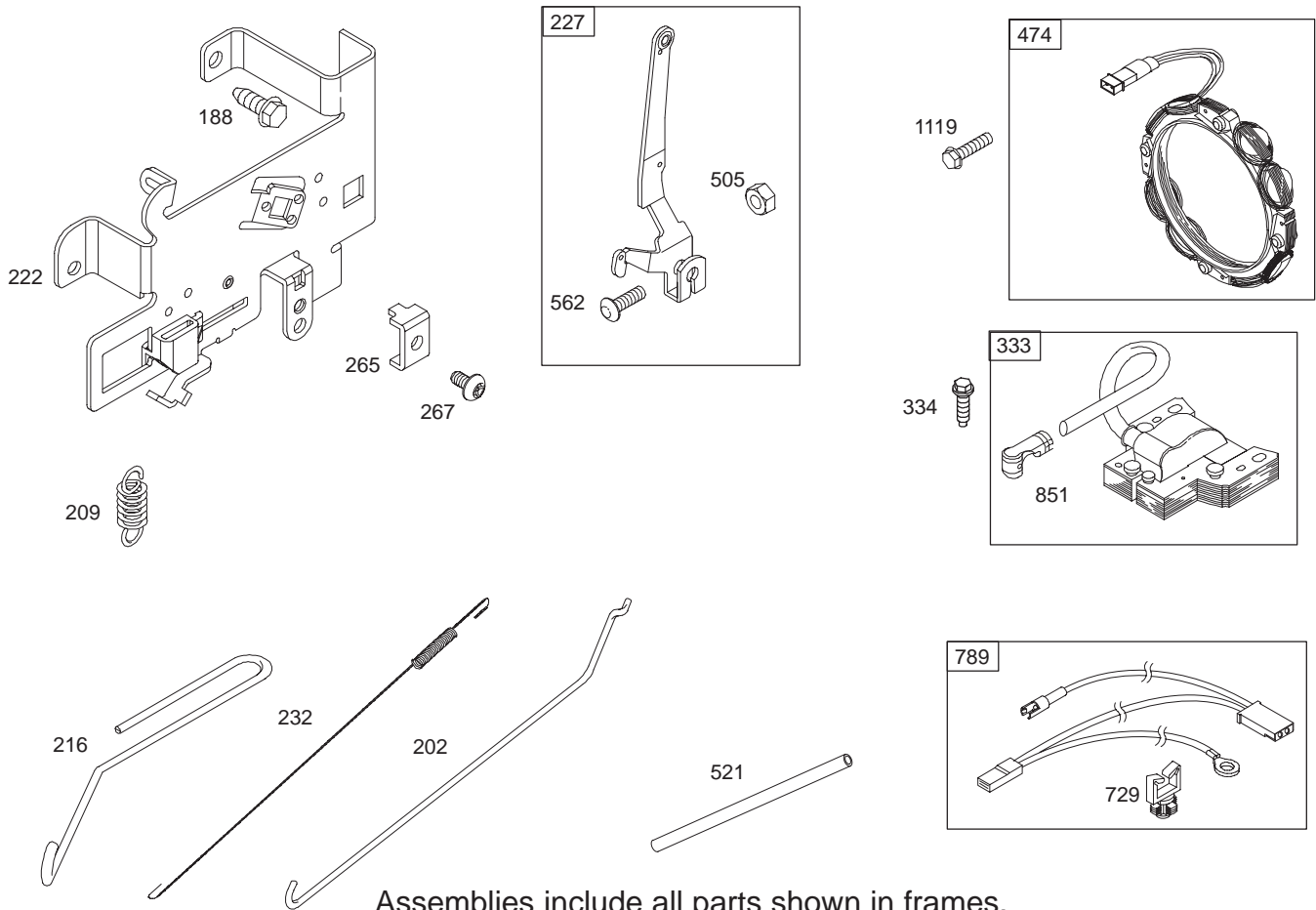
Assemblies include all parts shown in frames.

Air Cleaner Assembly Engine Briggs and Stratton Model 286H77-0121-E1

Ref. No.	Part No.	Qty.	Description
305	690960	1	Screw (Blower Housing Support)
431	697122	1	Elbow-Intake
445	697014	1	Filter-Air Cleaner Cartridge
967	697015	1	Filter-Pre Cleaner
968	697084	1	Cover-Air Cleaner
1265	697125	1	Support-Blower Housing
★1266	691917	1	Seal-O Ring (Intake Elbow)
★1266A	697123	1	Seal-O Ring (Intake Elbow)

Ref. No.	Part No.	Qty.	Description

★ Included in Engine Gasket Set-Ref. 358.

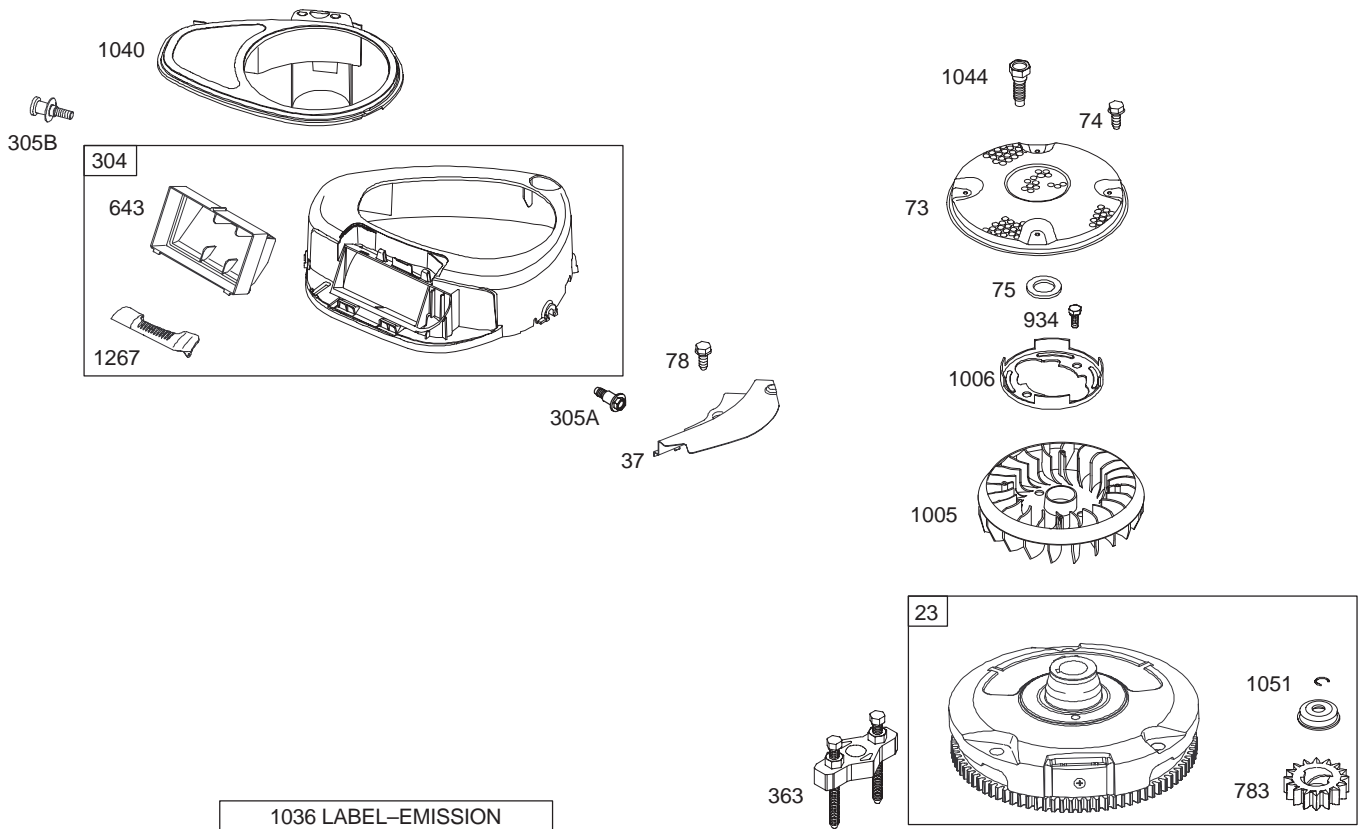


Assemblies include all parts shown in frames.

Governor Assembly Engine Briggs and Stratton Model 286H77-0121-E1

Ref. No.	Part No.	Qty.	Description
188	691693	1	Screw (Control Bracket)
202	691841	1	Link-Mechanical Governor
209	692208	1	Spring-Governor
216	691840	1	Link-Choke
222	694042	1	Bracket-Control
227	691374	1	Lever-Governor Control
232	691842	1	Spring-Governor Link
265	691024	1	Clamp-Casing
267	695134	1	Screw (Casing Clamp)
333	492341	1	Armature-Magneto
334	691061	1	Screw (Magneto Armature)
474	696459	1	Alternator
505	691251	1	Nut (Governor Control Lever)
521	690581	1	Shield-Cable
562	691119	1	Bolt (Governor Control Lever)

Ref. No.	Part No.	Qty.	Description
729	691335	1	Clip-Wire
789	692037	1	Wiring-Harness
851	493880	1	Terminal-Spark Plug
1119	691183	1	Screw (Alternator)

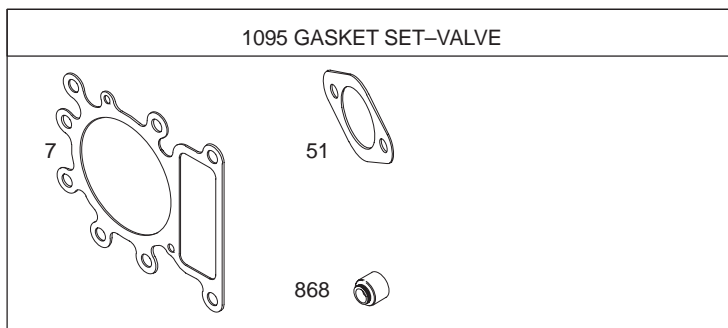
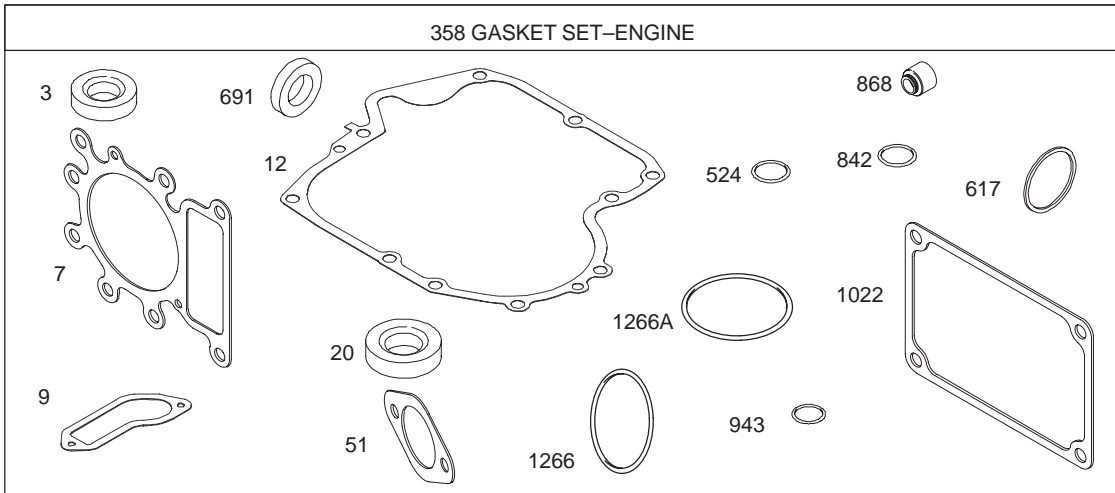


Assemblies include all parts shown in frames.

Blower Housing Assembly Engine Briggs and Stratton Model 286H77-0121-E1

Ref. No.	Part No.	Qty.	Description
23	693557	1	Flywheel
37	697108	1	Guard-Flywheel
73	697133	1	Screen-Rotating
74	690661	1	Screw (Rotating Screen)
75	690582	1	Washer (Flywheel)
78	690661	1	Screw (Flywheel Guard)
304	697137	1	Housing-Blower
305A	697102	1	Screw (Blower Housing)
305B	697103	1	Screw (Blower Housing)
363	19203	1	Puller-Flywheel
643	697155	1	Retainer-Air Filter
783	693713	1	Gear-Pinion
934	691058	1	Screw (Fan Retainer)
1005	697111	1	Fan-Flywheel
1006	690452	1	Retainer-Fan
1036	695700	1	Label-Emission
1040	697142	1	Plate-Trim
1044	691658	1	Screw (Crankshaft Extension)

Ref. No.	Part No.	Qty.	Description
1051	691265	1	Ring-Retaining
1267	697135	1	Latch-Blower Housing



Assemblies include all parts shown in frames.

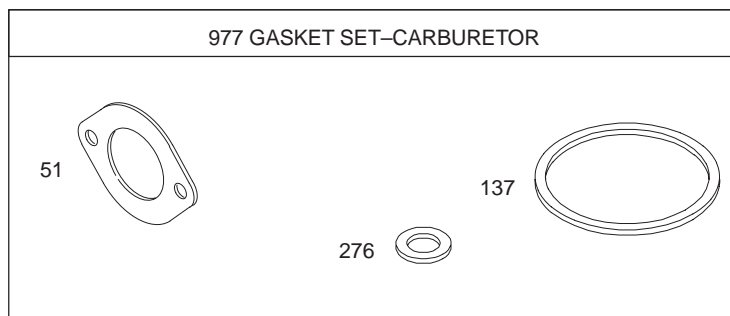
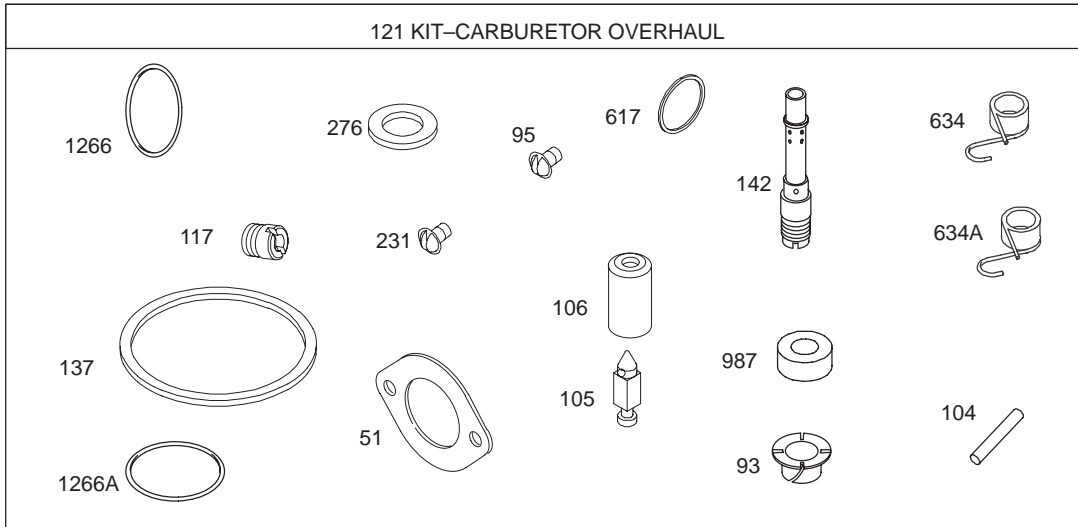
Gasket Assembly Engine Briggs and Stratton Model 286H77-0121-E1

Ref. No.	Part No.	Qty.	Description
★3	391086	1	Seal-Oil (Magneto Side)
★7	273280	1	Gasket-Cylinder Head
★9	697109	1	Gasket-Breather
★12	697110	1	Gasket-Crankcase
★20	690947	1	Seal-Oil (PTO Side)
★△◆51	692137	1	Gasket-Intake
358	697151	1	Gasket Set-Engine
★△●617	692138	1	Seal-O Ring (Intake Manifold)
★524	691032	1	Seal-Dipstick Tube
★691	692407	1	Seal-Governor Shaft
★842	691031	1	Seal-O Ring (Dipstick Tube)
★△868	690968	1	Seal-Valve
★943	690589	1	Seal-O Ring (Oil Pump Cover)
★1022	272475	1	Gasket-Rocker Cover
1095	691581	1	Gasket Set-Valve
★●1266	691917	1	Seal-O Ring (Intake Elbow)
★●1266A	697123	1	Seal-O Ring (Intake Elbow)

Ref. No.	Part No.	Qty.	Description

△ Included in Valve Gasket Set-Ref. 1095.
★ Included in Engine Gasket Set-Ref. 358.

● Included in Carburetor Overhaul Kit-Ref. 121.
◆ Included in Carburetor Gasket Set-Ref. 977.



Assemblies include all parts shown in frames.

Carburetor Overhaul Kit Assembly Engine Briggs and Stratton Model 286H77-0121-E1

Ref. No.	Part No.	Qty.	Description
★△◆51	692137	1	Gasket-Intake
●93	690602	1	Bushing-Throttle Shaft
●95	691636	1	Screw (Throttle Valve)
●104	690525	1	Pin-Float Hinge
●105	231855	1	Valve-Float Needle
●106	690577	1	Seat-Inlet
●117	694352	1	Jet-Main (Standard)
121	697154	1	Kit-Carburetor Overhaul
◆137	281165	1	Gasket-Float Bowl
●142	697140	1	Nozzle-Carburetor
●231	691636	1	Screw (Choke Valve)
◆276	692255	1	Washer-Sealing
★●617	692138	1	Seal-O Ring (Intake Manifold)
●634	690801	1	Spring/Seal Assembly
●634A	690802	1	Spring/Seal Assembly
977	690192	1	Gasket Set-Carburetor
●987	691326	1	Seal-Throttle Shaft
★●1266	691917	1	Seal-O Ring (Intake Elbow)

Ref. No.	Part No.	Qty.	Description
★●1266A	697123	1	Seal-O Ring (Intake Elbow)

△ Included in Valve Gasket Set-Ref. 1095.

★ Included in Engine Gasket Set-Ref. 358.

● Included in Carburetor Overhaul Kit-Ref. 121.

◆ Included in Carburetor Gasket Set-Ref. 977.

