



## Replacement Deck

### Groundsmaster © 580-D

Model No. 30591 -220000001 & Up  
 Model No. 30592 -220000001 & Up  
 Model No. 30593 -220000001 & Up

## Installation Instructions

### Front Cutting Unit

If replacing a front cutting unit with a serial number prior to 219999999, use steps 1 thru 21. If cutting unit serial number is 220000001 or higher, proceed to step 22.

1. Remove deck covers and relieve belt tension on all belts (Fig. 1).

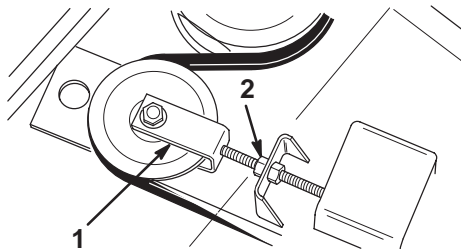


Figure 1

1. Tension arm
2. Jam nuts

2. Remove flange head screws securing gearbox plate and separate plate and drive motor assembly from the deck (Fig. 2 & 3). Be careful not to bend, twist, kink or damage flexible hydraulic lines.

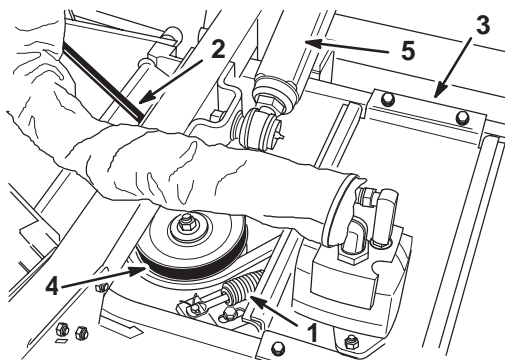


Figure 2

1. Compression spring and tension plate
2. Wing unit drive belt
3. Gear box plate
4. Center drive belt
5. Lift arm

3. Remove hex head screws and flange locknuts securing each lift arm to the castor arm and separate from the arm (Fig. 2).
4. Roll the cutting unit away from the traction unit.
5. Remove (2) set screws and taper lock bushing securing drive pulley to motor shaft (Fig. 3). Discard pulley, bushing and set screws.

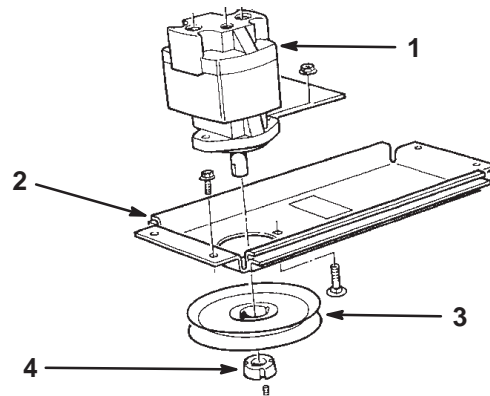


Figure 3

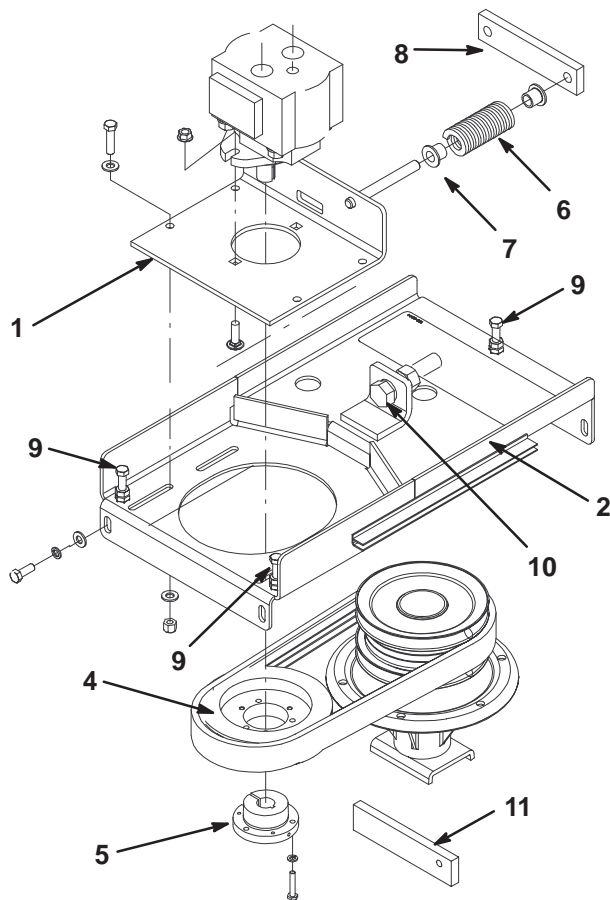
1. Drive motor
2. Gearbox plate
3. Drive pulley
4. Taper lock bushing

6. Remove (2) carriage bolts and flange nuts securing drive motor to gearbox plate (Fig. 3). Discard gearbox plate.

**Note:** Make sure three groove belt is in center pulley of deck spindle (Fig. 4).

7. Loosely secure motor mount to deck with (4) 3/8 x 1" lg. capscrews, lockwashers and flatwashers (Fig. 4).
8. Mount drive motor to slide plate with (2) carriage bolts and flange nuts (Fig. 4).
9. Mount drive pulley to motor shaft with taper lock bushing, (3) screws and (3) lockwashers (Fig. 4). Bushing to be flush with end of shaft within  $\pm 0.06"$ .
10. Insert a compression spring and (2) spring holders onto each side plate rod (Fig. 4). Position a spring holder into end of each spring.

11. Insert slide bar onto side plate rods (Fig. 4).
12. Position slide plate/motor assembly onto motor mount while routing belt around drive pulley (Fig. 4). Be careful not to bend, twist, kink or damage flexible hydraulic lines.
13. Slide the height gauge under drive pulley (not under hub). Equally tighten or loosen (3) adjusting screws (Fig. 4) until bottom of pulley rests on height gauge (approximately 1-1/2"). Tighten nuts to lock adjustment. Remove height gauge.
14. Tighten (4) capscrews securing motor mount to deck.
15. Loosely mount slide plate/motor assembly to motor mount with (4) 3/8 x 1-1/2" lg. capscrews, (8) flatwashers and (4) locknuts (Fig. 4). Washers to be positioned on top of slide plate and under motor mount.



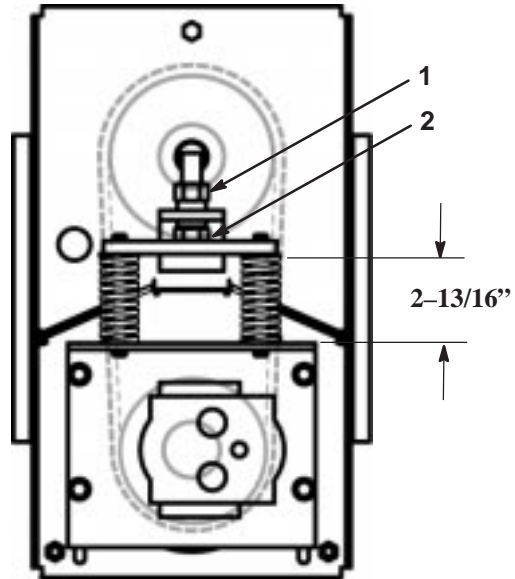
**Figure 4**

- |                       |                    |
|-----------------------|--------------------|
| 1. Slide plate        | 7. Spring holder   |
| 2. Motor mount        | 8. Slide bar       |
| 3. Drive motor        | 9. Adjusting screw |
| 4. Drive pulley       | 10. Tensioner bolt |
| 5. Taper lock bushing | 11. Height gauge   |
| 6. Compression spring |                    |

16. Position three groove belt onto drive pulley (Fig. 4).

17. Tighten tensioner bolt until springs are compressed to a dimension of 2-13/16" .

**Note:** When re-tensioning an old belt, tighten tensioner bolt until springs are compressed to a dimension of 3-1/4".



**Figure 5**

- |            |                   |
|------------|-------------------|
| 1. Jam nut | 2. Tensioner bolt |
|------------|-------------------|

18. Tighten jam nut securing adjustment.
19. Tighten (4) capscrews securing slide plate to motor mount.
20. Move deck into position aligning lift arms to castor arms.
21. Secure each lift arm to the castor arm with hex head screws and flange locknuts (Fig. 2).

**If cutting unit serial number is 220000001 or higher, proceed to step 22.**

22. Remove deck covers.
23. Loosen jam nut and relieve tension on springs with tensioner bolt (Fig. 4 & 5).
24. Remove (4) capscrews (8) washers and nuts securing slide plate to motor mount.
25. Remove slide bar, (2) springs and spring holders from slide plate rods. Remove slide plate/motor assembly from motor mount while removing belt from drive pulley.
26. Remove hex head screws and flange locknuts securing each lift arm to the castor arm and separate from the arm (Fig. 2).
27. Roll the cutting unit away from the traction unit.
28. Remove (3) screws, lockwashers and hub securing drive pulley to motor shaft (Fig. 3).

29. Remove (2) carriage bolts and flange nuts securing drive motor to slide plate (Fig. 3).

**Note:** Make sure three groove belt is in center pulley of deck spindle (Fig. 4).

30. Mount drive motor to slide plate with (2) carriage bolts and flange nuts (Fig. 4).

31. Mount drive pulley to motor shaft with taper lock bushing, (3) screws and (3) lockwashers (Fig. 4). Bushing to be flush with end of shaft within  $\pm 0.06$ ".

32. Insert a compression spring and (2) spring holders onto each side plate rod (Fig. 4). Position a spring holder into end of each spring.

33. Insert slide bar onto side plate rods (Fig. 4).

34. Position slide plate/motor assembly onto motor mount while routing belt around drive pulley (Fig. 4). Be careful not to bend, twist, kink or damage flexible hydraulic lines.

35. Slide the height gauge under drive pulley (not under hub). Equally tighten or loosen (3) adjusting screws until bottom of pulley rests on height gauge (approximately 1-1/2"). Tighten nuts to lock adjustment. Remove height gauge.

36. Tighten (4) capscrews securing motor mount to deck.

37. Tighten tensioner bolt until springs are compressed to a dimension of 2-13/16" (Fig. 5).

**Note:** When re-tensioning an old belt, tighten tensioner bolt until springs are compressed to a dimension of 3-1/4".

38. Tighten jam nut securing adjustment.

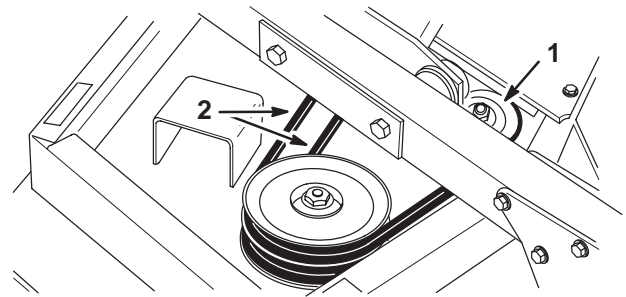
39. Tighten (4) capscrews securing slide plate to motor mount.

40. Move deck into position aligning lift arms to castor arms.

41. Secure each lift arm to the castor arm with hex head screws and flange locknuts (Fig. 2).

## Outboard Cutting Units

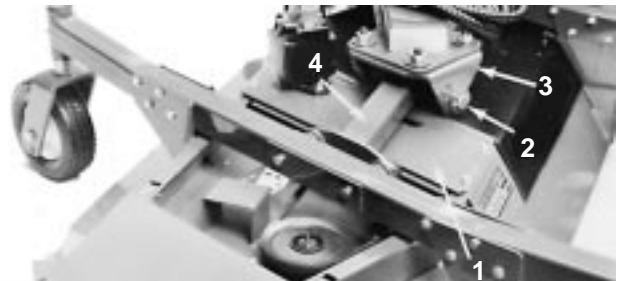
1. Remove deck covers and relieve belt tension on all belts (Fig. 6).



**Figure 6**

1. Idler pulley flange locknut      2. Drive belts

2. Remove flange head screws securing gearbox plate to deck. To separate plate and drive motor assembly from deck, rotate plate end toward traction unit (Fig. 7). Tip plate, motor and pulley assembly on its side and remove from deck. Be careful not to bend, twist, kink or damage flexible hydraulic lines.



**Figure 7**

1. Gearbox plate      3. Deck clevis  
2. Deck pivot shaft      4. Lift bar

3. Remove locknut securing deck pivot shaft into deck clevis and lift bar (Fig. 7).

4. Move the cutting unit away from the machine.

5. To install cutting unit, assemble in reverse order.

