



Mid-Size Traction Unit

Proline Gear 17HP

Model No. 30169 – 22000001 and Up

Parts Catalog

Ordering Replacement Parts

To order replacement parts, please supply: the part number, the quantity, and the description of each part desired.

Understanding Reference Numbers

Each identified part in an illustration has a reference number. The reference number for a part also appears in the parts list, along with other information about the part.

This catalog uses two special reference number formats, one to indicate parts in a service assembly and another to indicate the quantity of a given part in an illustration.

Service Assembly Reference Numbers

Parts in service assemblies have reference numbers in the form **a:b**. The **a** represents the reference number of the entire service assembly and the **b** represents a sequential number unique to each part within the service assembly.

For example, a wheel assembly might be identified by reference number **6**, the tire by **6:1**, the valve by **6:2**, and the wheel by **6:3**. When you order the assembly identified by reference number **6**, you receive all parts identified by reference numbers **6:1**, **6:2**, and **6:3**. However, you may also order any part individually.

Reference numbers of this type appear in illustrations and in part lists.

Reference Numbers Indicating Quantity

In an illustration, if a reference number indicates more than one part, the reference number has the form **nX y**. The **n** represents the quantity of the part, the **X** is the multiplication symbol, and the **y** represents the reference number.

For example, in an illustration, the reference number **2X 37** means that two of the parts identified by reference number **37** are indicated.

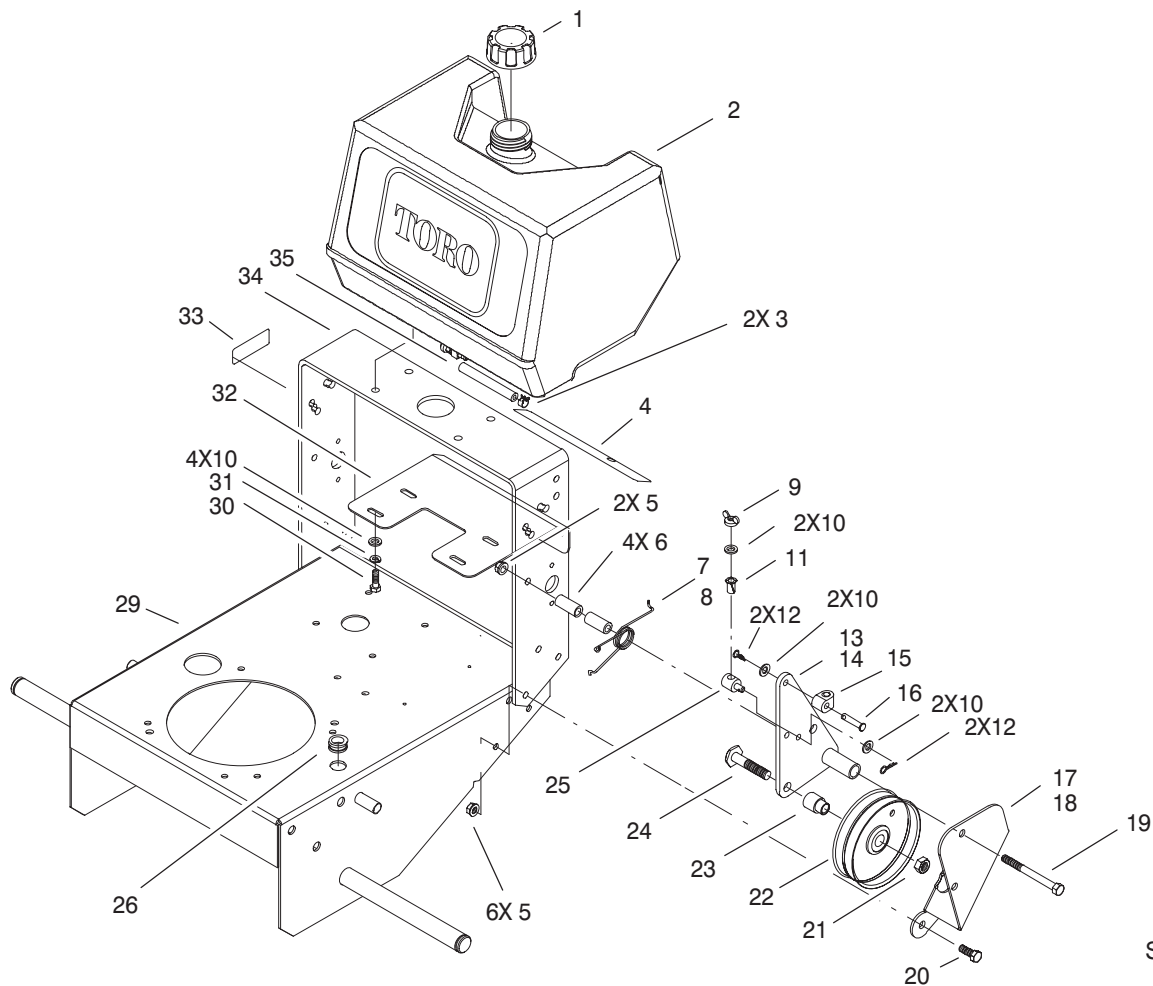
Contents

Description	Page	Description	Page
Fuel Tank and Idler Pulley Assembly	3	Cooling Equipment Assembly (Continued)	
Transmission and Drive Pulley Assembly	4	Kawasaki FH500V-AS25	18
Wheel and Brake Assembly	5	Electrical Equipment Assembly	
Wheel/Tire Assembly	6	Kawasaki FH500V-AS25	19
Handle and Control Assembly	7	Electrical Equipment Assembly (Continued)	
Engine and Muffler Assembly	8	Kawasaki FH500V-AS25	20
Clutch/Brake Assembly No. 54-3200	9	Control Equipment Assembly	
Electrical Schematic	10	Kawasaki FH500V-AS25	21
Cylinder / Crankcase Assembly		Control Equipment Assembly (Continued)	
Kawasaki FH500V-AS25	11	Kawasaki FH500V-AS25	22
Cylinder / Crankcase Assembly (Continued)		Carburetor Assembly	
Kawasaki FH500V-AS25	12	Kawasaki FH500V-AS25	23
Valve / Camshaft Assembly		Carburetor Assembly (Continued)	
Kawasaki FH500V-AS25	13	Kawasaki FH500V-AS25	24
Valve / Camshaft Assembly (Continued)		Air Filter / Muffler Assembly	
Kawasaki FH500V-AS25	14	Kawasaki FH500V-AS25	25
Piston / Crankshaft Assembly		Fuel Tank / Fuel Valve Assembly	
Kawasaki FH500V-AS25	15	Kawasaki FH500V-AS25	26
Lubrication Equipment Assembly		Starter Assembly	
Kawasaki FH500V-AS25	16	Kawasaki FH500V-AS25	27
Cooling Equipment Assembly		Decals	
Kawasaki FH500V-AS25	17	Kawasaki FH500V-AS25	28

Part Description Abbreviations

Part descriptions in this catalog may include the following abbreviations.

Abbreviation	Meaning	Abbreviation	Meaning
AR	as required	HYD	hydraulic
ASM	assembly	INC	incorporated
CARR	carriage	LH	left hand
DEG	degrees	NI	nylon insert
FH	flat head	PPH	Phillips pan head
GA	gauge	PTH	Phillips truss head
HF	hex flange	PTO	power take off
HH	hex head	RH	right hand
HHF	hex head flange	SFH	slotted fillister head
HLH	hex lag head	SHH	slotted hex head
HJ	hex jam	SQH	square head
HOC	height-of-cut	SHWH	slotted hex washer head
HS	hex socket	SPH	slotted pan head
HSBH	hex socket button head	SRH	slotted round head
HSFH	hex socket flat head	STD	standard
HSH	hex socket head	TAP	self tapping
HWH	hex washer head	TTH	Torx truss head
HWHTF	hex washer head thread forming	WH	wing head

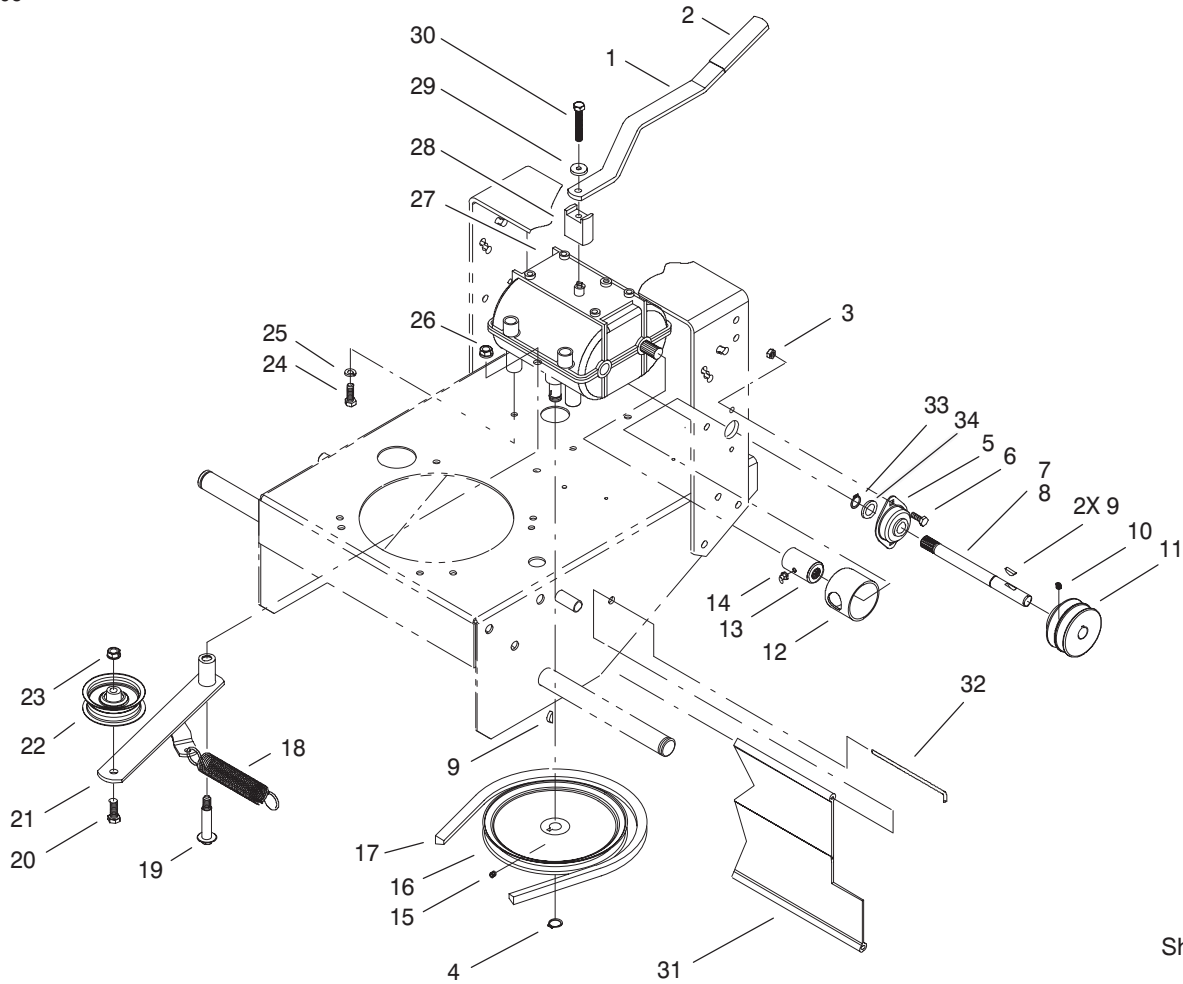


Sheet No.:2

Fuel Tank and Idler Pulley Assembly

Ref. No.	Part No.	Qty.	Description
1	55-3570	1	Gas Cap ASM
2	95-2802	1	Tank-Fuel
3	2412-98	2	Clamp
4	82-7750	1	Decal-Ground Speed
5	3296-39	8	Nut-Lock, NI
6	74-0040	4	Spacer-Pivot, Idler
7	51-4370	1	Spring-Torsion, RH
8	51-4380	1	Spring-Torsion, LH
9	32103-25	2	Nut-Wing
10	3256-23	10	Washer-Flat
11	52-2890	2	Bushing-Nylon
12	3290-307	4	Pin-Hair
13	74-0230-01	1	Bracket-Idler, RH
14	74-0220-01	1	Bracket-Idler, LH
15	74-0521	2	Fitting-Rod
16	283-6	2	Pin-Clevis
17	67-6370-01	1	Bracket-Support, RH
18	67-6380-01	1	Bracket-Support, LH
19	323-16	2	Screw-HH
20	323-6	6	Screw-HH
21	3296-23	2	Nut-Lock, NI
22	95-2800	2	Pulley-Idler
23	95-2801	2	Spacer-Pulley
24	51-4450	2	Screw-Leveler
25	68-9690	2	Fitting-Rod
26	237-124	1	Grommet

Ref. No.	Part No.	Qty.	Description
29	93-1156-01	1	Frame
30	322-4	4	Screw-HH
31	3253-4	4	Washer-Lock
32	66-7400-01	1	Plate-Control
33	95-2814	1	Decal-Shut Off, Fuel
34	74-0360-01	1	Frame-Rear
35	47-2962	1	Hose-Fuel

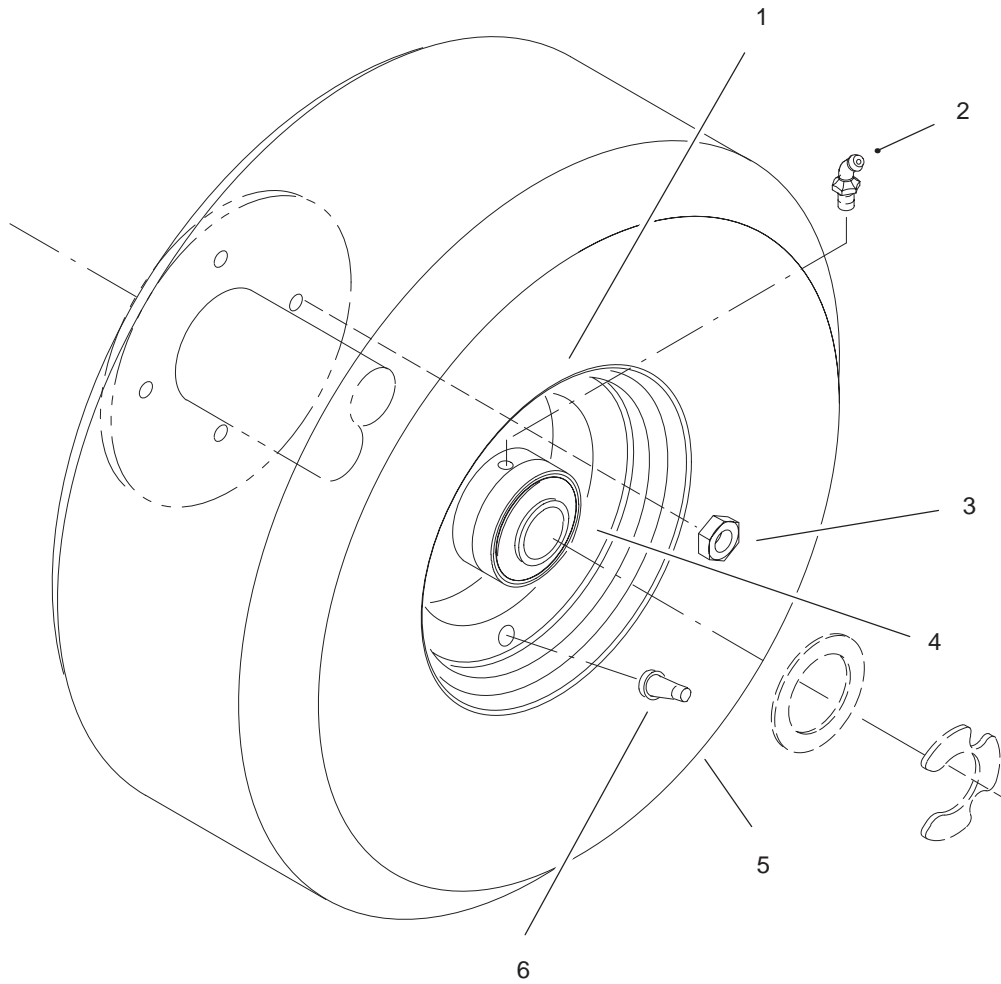


Sheet No.:3

Transmission and Drive Pulley Assembly

Ref. No.	Part No.	Qty.	Description
1	74-0320-01	1	Lever-Shift
2	47-1970	1	Grip
3	3296-42	4	Nut-Lock, NI
4	32120-64	1	Ring-Snap, External
5	1-323254	2	Flange-Output
6	321-4	4	Screw-HH
7	98-0788	1	Shaft-Extension, RH
8	98-0787	1	Shaft-Extension, LH
9	3257-5	3	Key-Woodruff
10	3245-3	2	Screw-Hex Socket Set
11	105-0828	2	Pulley-Transmission
12	51-4220	2	Guard-Coupler
13	98-0789	2	Coupler
14	302-5	2	Fitting-Grease
15	3245-1	1	Screw-Set, HSH
16	51-4190	1	Pulley-Driven
17	26-9671	1	V-Belt
18	68-2190	1	Spring
19	27-6230	1	Bolt-Wheel
20	323-8	1	Screw-HH
21	16-7509	1	Lever-Idler
21:1	256-155	2	Bushing-Flange
22	62-4540	1	Pulley
23	3296-39	1	Nut-Lock, NI
24	322-2	4	Screw-HH

Ref. No.	Part No.	Qty.	Description
25	3253-4	4	Washer-Lock
26	3296-6	1	Nut-Lock, NI
27	98-0791	1	Transmission
28	72-2190	1	Mount-Lever, Shift
29	7-5461	1	Spacer
30	329-10	1	Screw-HH
31	95-1526	1	Shield-Trailing
32	95-1529	1	Rod-Shield
33	32151-62	2	Ring-Retaining
34	1-323252	2	Bearing-Shaft



Sheet No.:A1

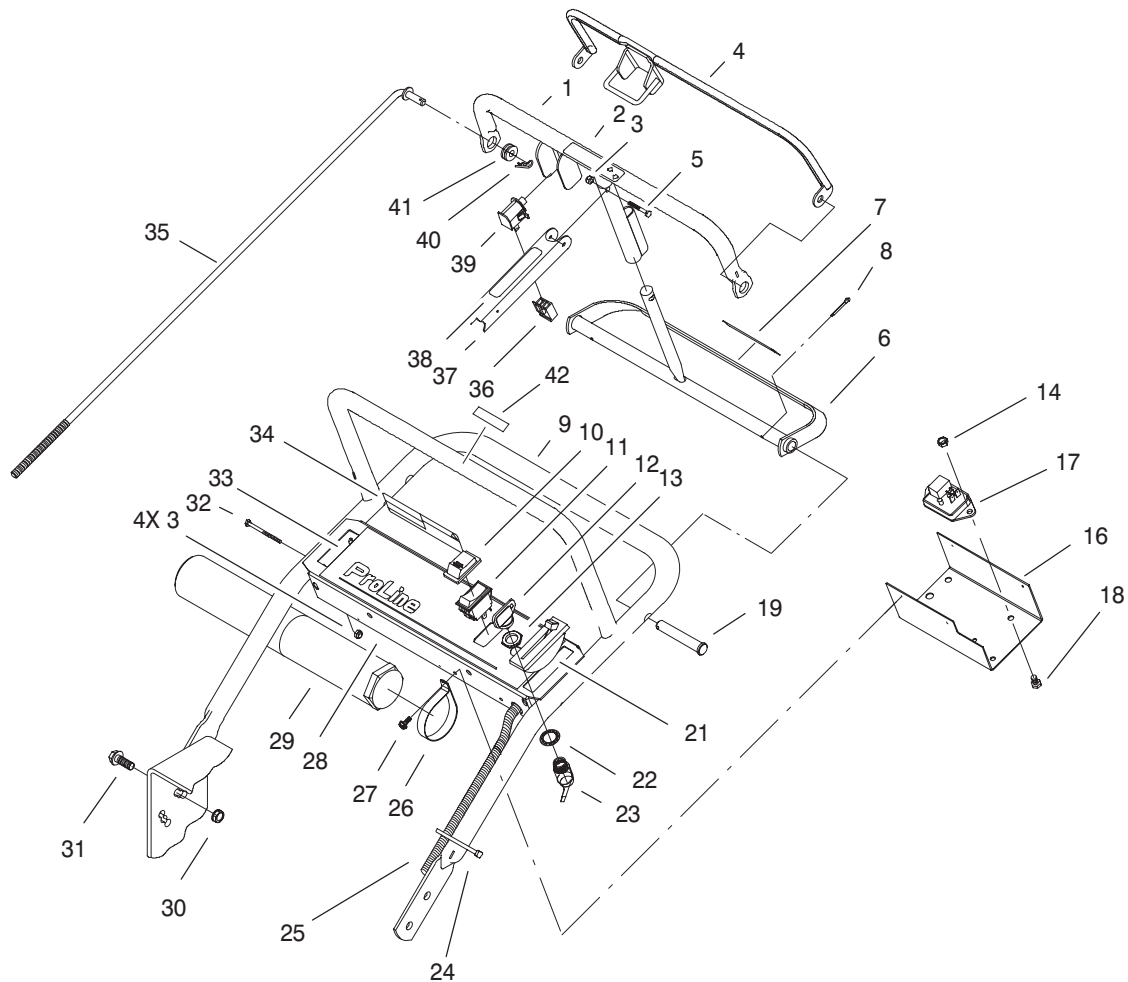
C-3026

Wheel/Tire Assembly

Ref. No.	Part No.	Qty.	Description
1	242-80	2	Rim
2	302-11	2	Fitting-Grease
3	3296-29	8	Nut-Hex, Lock
4	92-1746	4	Bearing
5	231-117	2	Tire
6	232-27	2	Stem-Valve

Ref. No.	Part No.	Qty.	Description

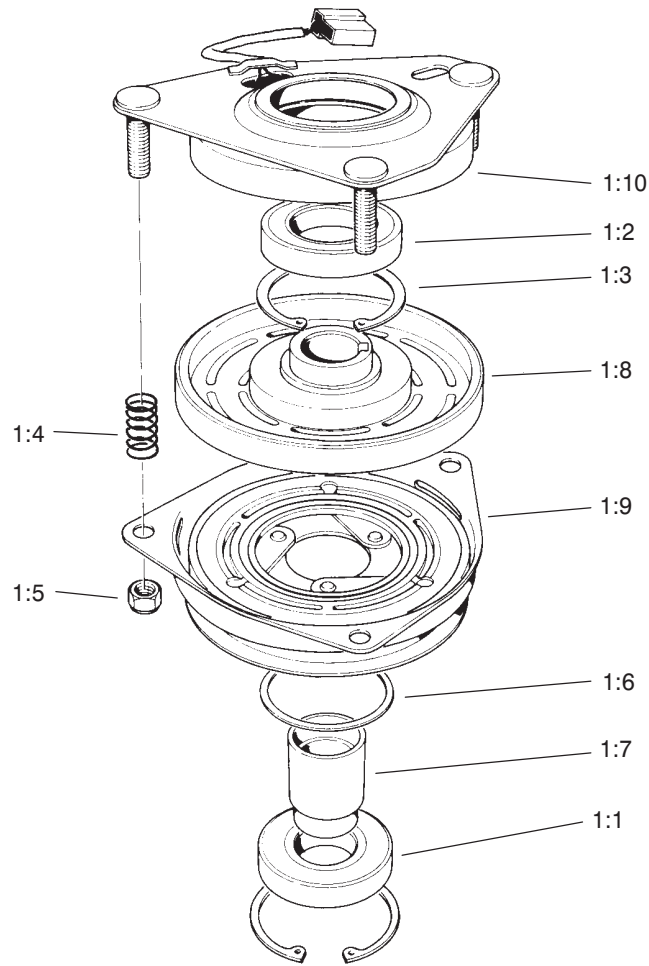
PROTOTYPE



Sheet No.:5

Handle and Control Assembly

Ref. No.	Part No.	Qty.	Description	Ref. No.	Part No.	Qty.	Description
1	82-7690-03	1	Bar-Control	26	2412-120	2	R-Clamp
2	82-2290	1	Decal-Bar, Control	27	32104-76	4	Screw
3	3296-2	5	Nut-Lock	28	82-2180-03	1	Panel-Control
4	82-7680-03	1	Bail	29	74-0720	1	Tube-Manual
5	32105-1	1	Screw-SHH	30	32128-21	4	Nut-HF
6	99-8501-03	1	Control-Pivot	31	3234-11	4	Screw-HHF
7	82-2280	1	Decal-Handle, Reverse	32	32105-14	4	Screw
8	3272-11	2	Pin-Cotter	33	82-7730	1	Decal-Control Panel
9	67-6440-01	1	Handle-Upper	34	105-0884	1	Decal-Danger
10	82-3820	1	Boot-Switch	35	82-7631	2	Rod-Control
11	82-2300	1	Switch	36	218-595	1	Connector-Body
12	63-8360	2	Key-Ignition	37	51-4850-03	1	Lever-Brake, Parking
13	218-461	1	Nut-HH	38	52-2010	1	Decal-Lever, Parking
14	3296-42	1	Nut-Lock, NI	39	82-2190	1	Switch-Bail
16	93-1187-03	1	Panel-Bottom	40	3290-307	2	Pin-Hair
17	100-6170	1	Module-Delay	41	237-141	2	Grommet-Rubber
18	321-2	1	Screw-HH	42	98-4387	1	Decal-Protection, Ear
19	283-55	2	Pin-Clevis				
21	100-6450	1	Control-Throttle				
22	3254-5	1	Washer-Lock, Internal				
23	29-5560	1	Switch-On/Off				
23:1	218-461	1	Nut-HH				
23:2	3254-5	1	Washer-Lock, Internal				
24	3290-378	2	Tie-Cable				
25	100-3294	1	Harness-Wire				

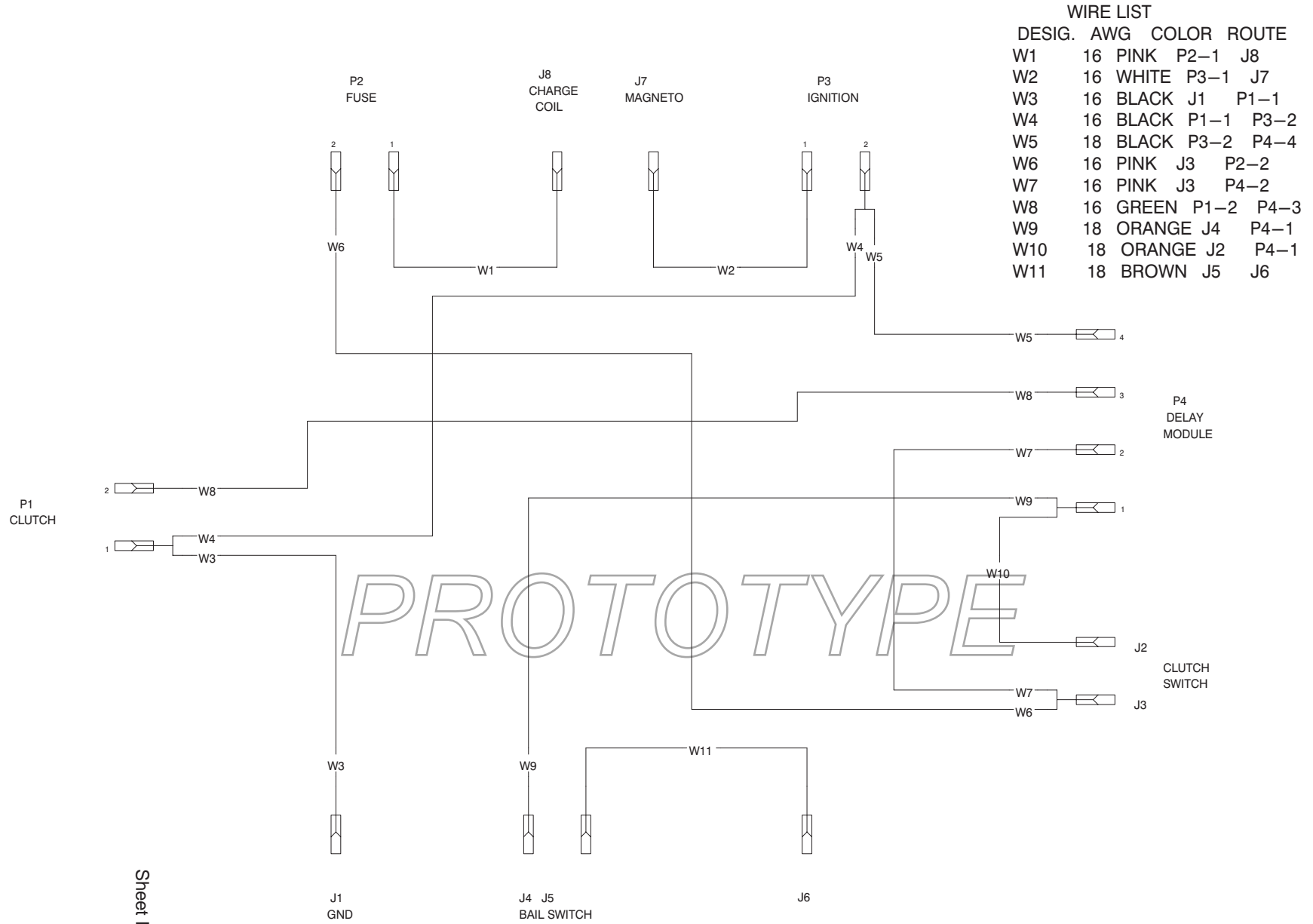


Sheet No.:A2

Clutch/Brake Assembly No. 54-3200

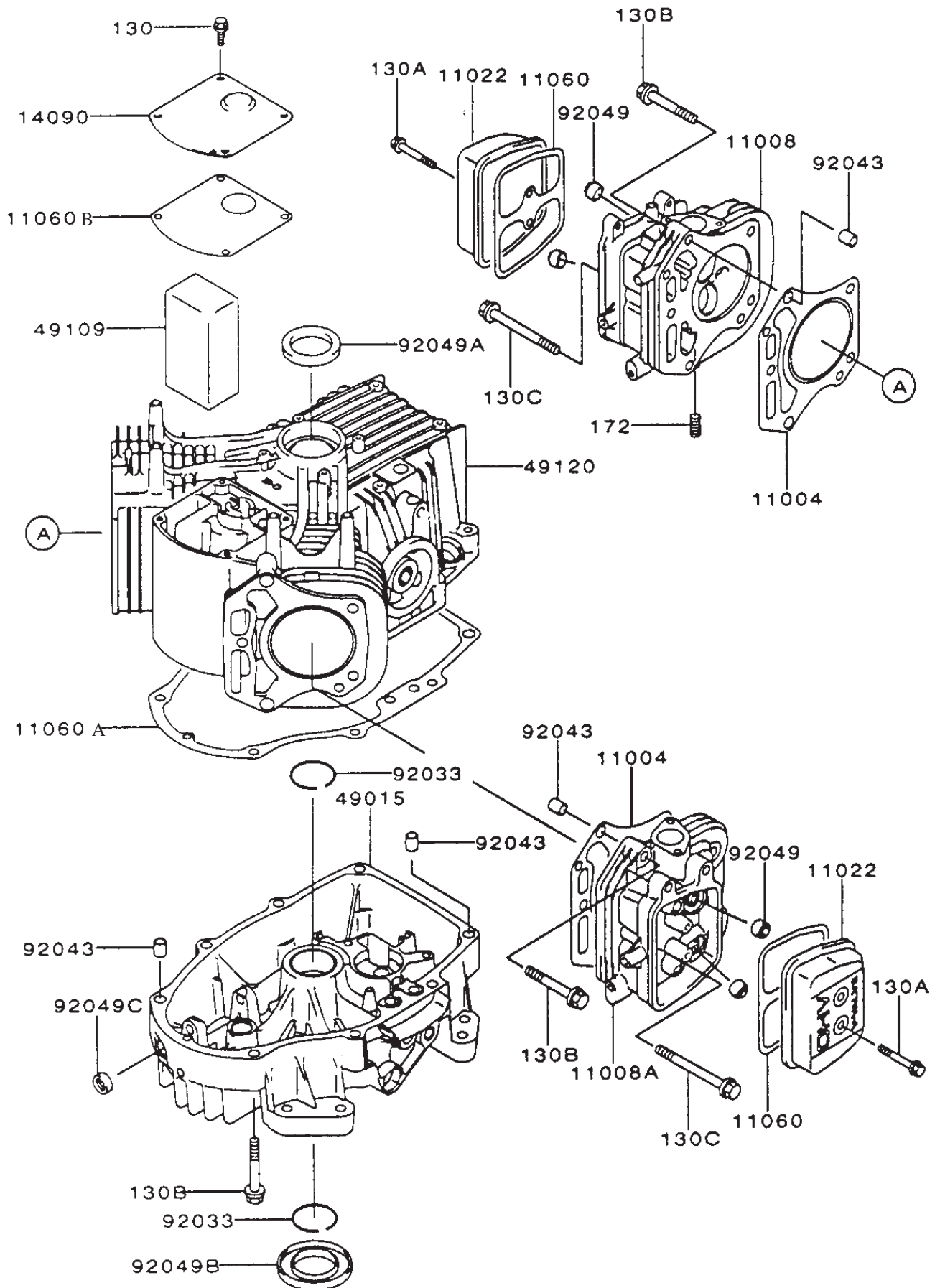
Ref. No.	Part No.	Qty.	Description	Ref. No.	Part No.	Qty.	Description
1		1	Deck Clutch				
1:1	251-291	1	Bearing-Pulley				
1:2	251-292	1	Bearing-Field				
1:3	44-8310	2	Ring-Retaining				
1:4	44-8320	3	Spring				
1:5	3296-6	3	Nut-Lock, NI				
1:6	44-8330	1	Spacer-Bearing, Pulley				
1:7	44-8340	1	Collar-Bearing				
1:8	44-8360	1	Field Coil, Rotor, Bearing ASM				
1:9	44-8370	1	Armature Pulley Bearing ASM				
1:10	54-0230	1	Field Bearing ASM				

Electrical Schematic



Sheet No.:7

Cylinder / Crankcase Assembly Kawasaki FH500V-AS25



Cylinder / Crankcase Assembly (Continued)

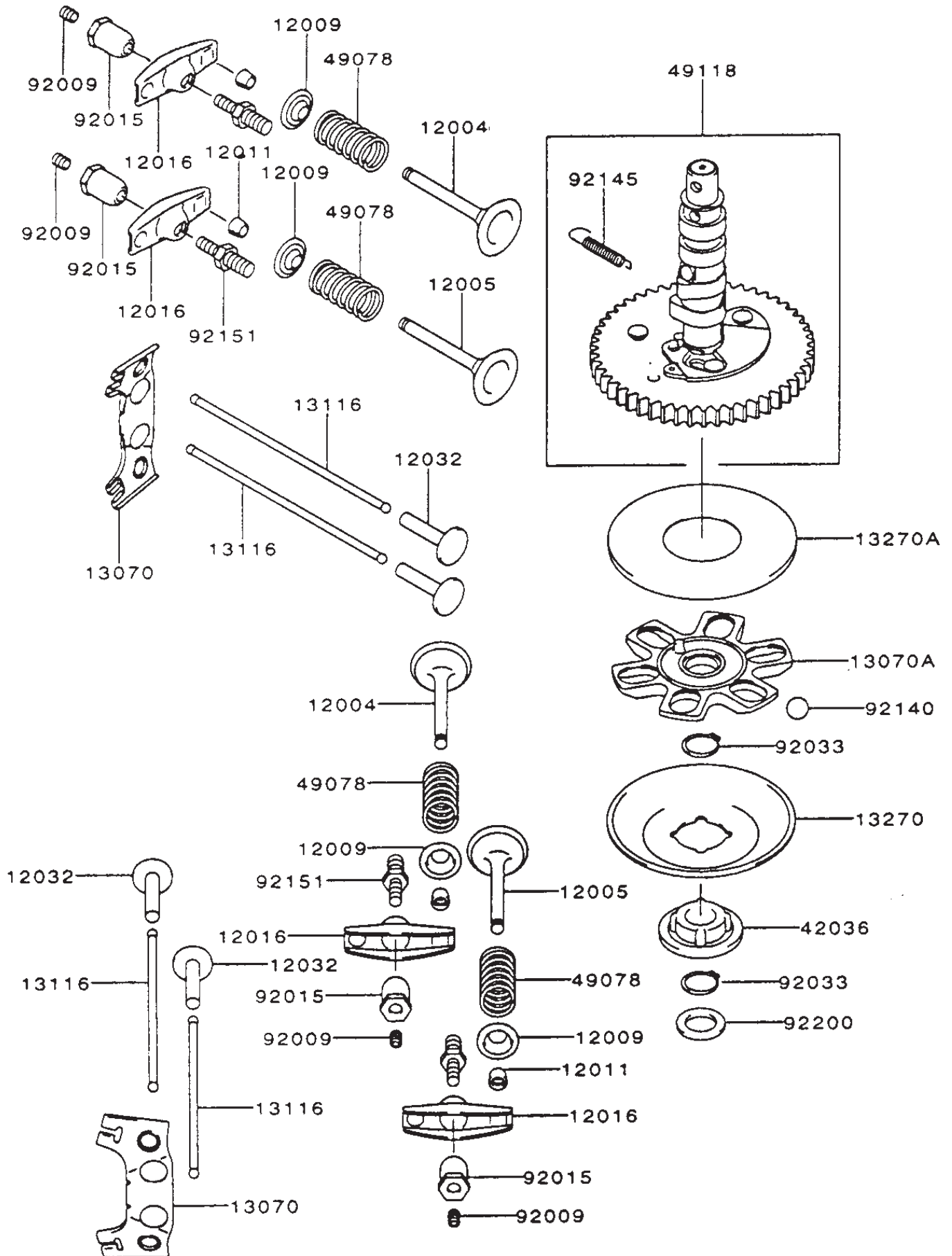
Kawasaki FH500V-AS25

Ref. No.	Part No.	Qty.	Description
11004	11004-7001	2	Gasket-Head
11008	11008-7001	1	Head-Comp-Cylinder No. 1
11008A	11008-7002	1	Head-Comp-Cylinder No. 2
11022	11022-7001	2	Case-Rocker
11060	11060-7001	2	Gasket, Rocker Case
11060A	11060-7008	1	Gasket, Crankcase Cover
11060B	11060-7015	1	Gasket, Breather
14090	14090-7001	1	Cover, Breather
49015	49015-6215	1	Cover-Crankcase
49109	49109-7002	1	Element-Breather
49120	49120-6119	1	Crankcase-Comp
92033	92033-7003	2	Ring-Snap
92043	92043-7001	6	Pin
92049	92049-7001	4	Seal-Oil
92049A	92049-7002	1	Seal-Oil
92049B	92049-7004	1	Seal-Oil
92049C	92049-7005	1	Seal-Oil
130	130B0612	4	Bolt-Flanged
130A	130B0640	4	Bolt-Flanged
130B	130T0850	17	Bolt-Flanged
130C	130T0875	2	Bolt-Flanged
172	172G0818	4	Bolt-Stud

Ref. No.	Part No.	Qty.	Description

PROTOTYPE

Valve / Camshaft Assembly Kawasaki FH500V-AS25



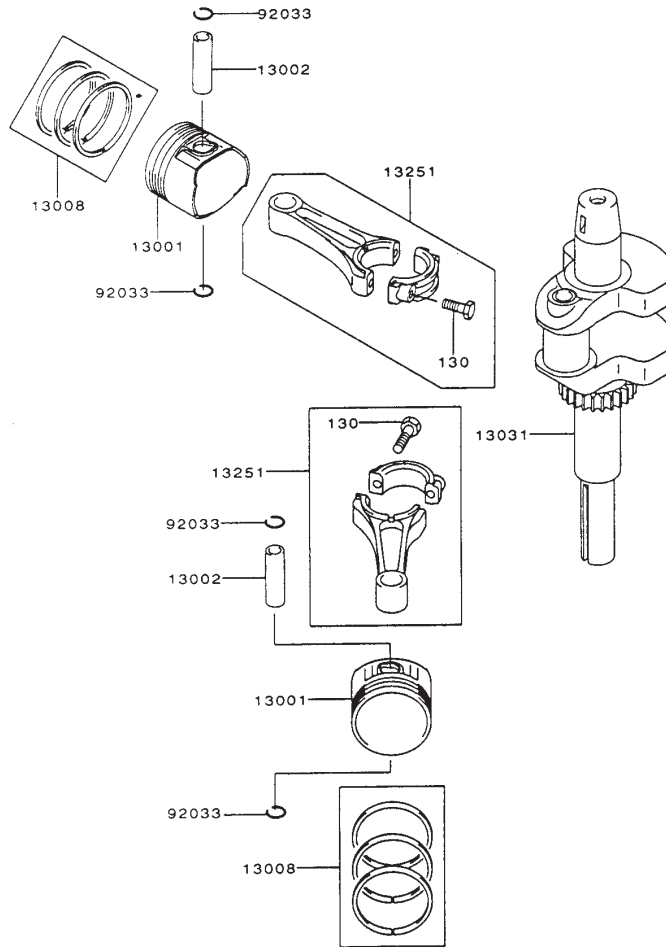
Valve / Camshaft Assembly (Continued)

Kawasaki FH500V-AS25

Ref. No.	Part No.	Qty.	Description
12004	12004-7001	2	Valve-Intake
12005	12005-7001	2	Valve-Exhaust
12009	12009-7001	4	Retainer-Valve Spring
12011	12011-2056	8	Collet
12016	12016-7001	4	Arm-Rocker
12032	12032-7001	4	Tappet
13070	13070-7001	2	Guide
13070A	13070-7002	1	Guide
13116	13116-2057	4	Rod-Push
13270	13270-7002	1	Plate
13270A	13270-7003	1	Plate
42036	42036-7001	1	Sleeve
49078	49078-7001	4	Spring-Engine Valve
49118	49118-7002	1	Camshaft-Comp
92009	92009-2341	4	Screw
92015	92015-2253	4	Nut
92033	92033-7001	2	Ring-Snap
92140	92140-7002	6	Ball
92145	92145-7001	1	Spring
92151	92151-7001	4	Bolt
92200	92200-7001	1	Washer

Ref. No.	Part No.	Qty.	Description

PROTOTYPE

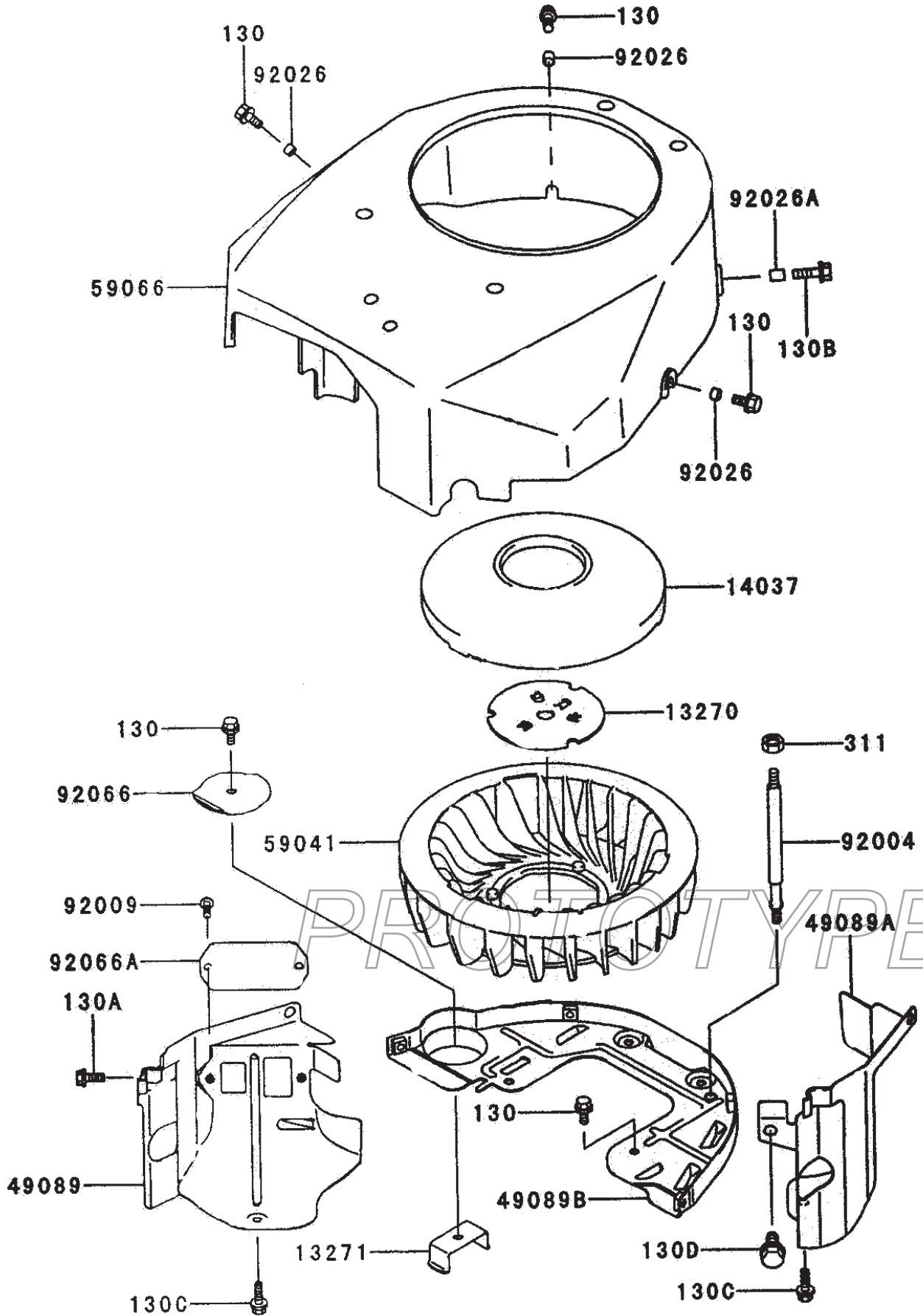


Piston / Crankshaft Assembly Kawasaki FH500V-AS25

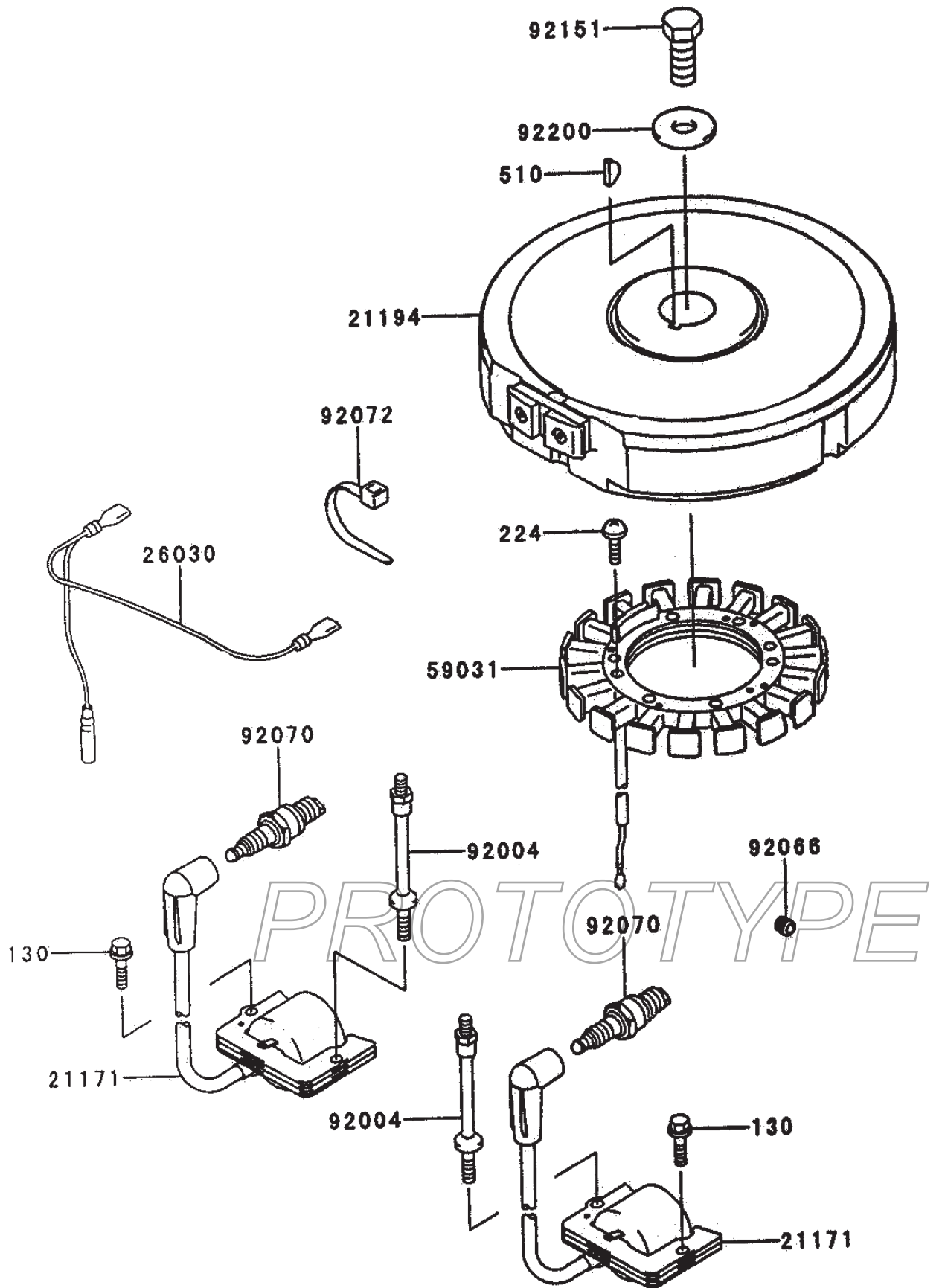
Ref. No.	Part No.	Qty.	Description	Ref. No.	Part No.	Qty.	Description
13001	13001-7001	2	Piston-Engine				
13002	13002-7001	2	Pin-Piston				
13008	13008-6055	2	Ring-Set-Piston				
13031	13031-7001	1	Crankshaft-Comp				
13251	13251-7001	2	Rod-Assy-Connecting				
92033	92033-7002	4	Ring-Snap				
130	130G0630	4	Bolt-Flanged				

PROTOTYPE

Cooling Equipment Assembly Kawasaki FH500V-AS25



Electrical Equipment Assembly Kawasaki FH500V-AS25



Electrical Equipment Assembly (Continued)

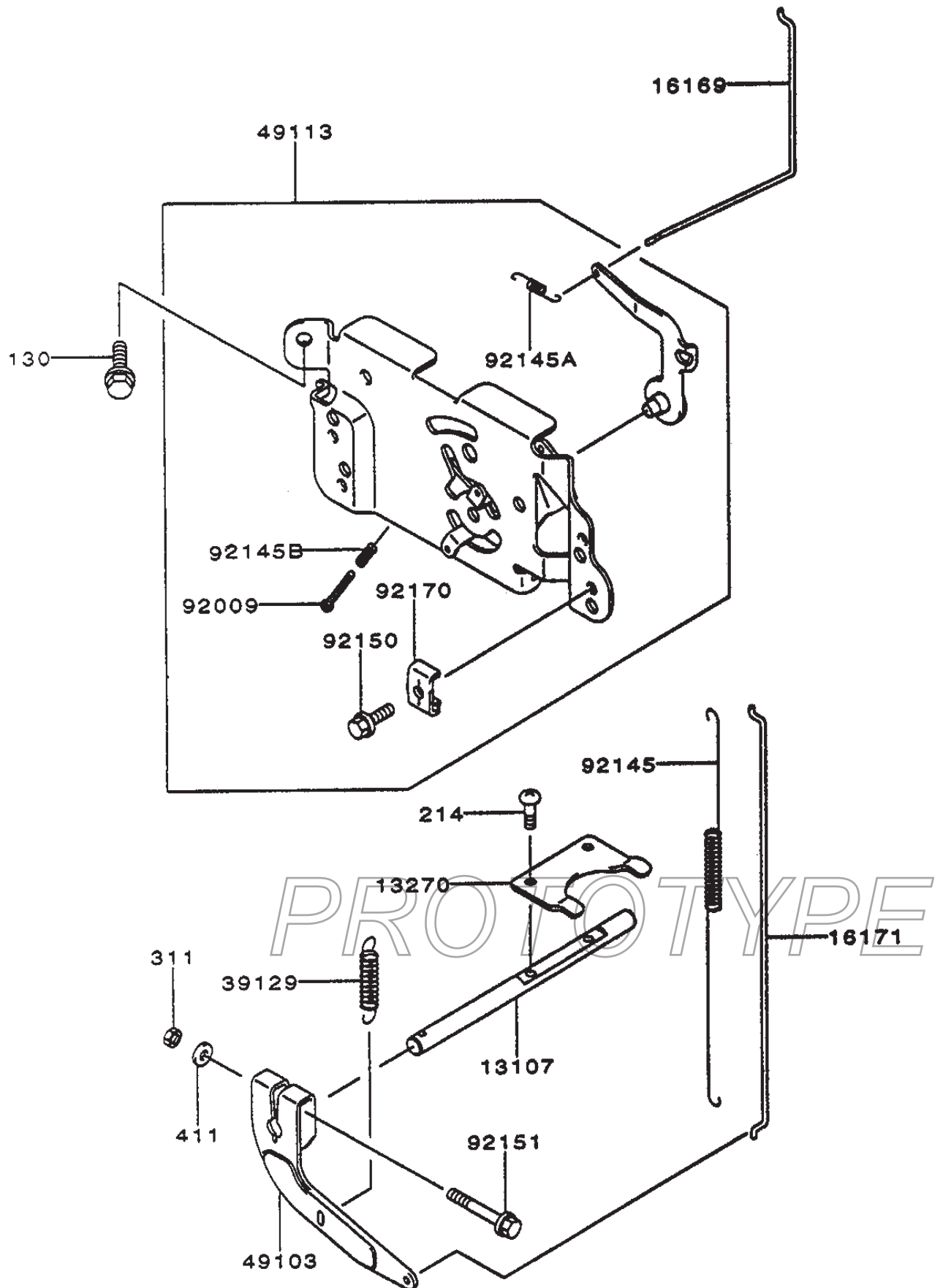
Kawasaki FH500V-AS25

Ref. No.	Part No.	Qty.	Description
21171	21171-7001	2	Coil-Assy-Ignition
21194	21193-7001	1	Flywheel-Assy
26030	26030-7001	1	Harness
59031	59031-7002	1	Coil-Charging
92004	92004-2147	2	Stud
92066	92066-7002	1	Plug
92070	92070-7001	2	Plug-Spark (RCJ8Y)
92072	92072-7001	2	Band
92151	92151-2097	1	Bolt, 12x30
92220	92220-7002	1	Washer
130	130B0620	2	Bolt-Flanged
224	224B0520	4	Screw-Pan-WP-Cros
510	510A5100	1	Key-Woodruff

Ref. No.	Part No.	Qty.	Description

PROTOTYPE

Control Equipment Assembly Kawasaki FH500V-AS25



Control Equipment Assembly (Continued)

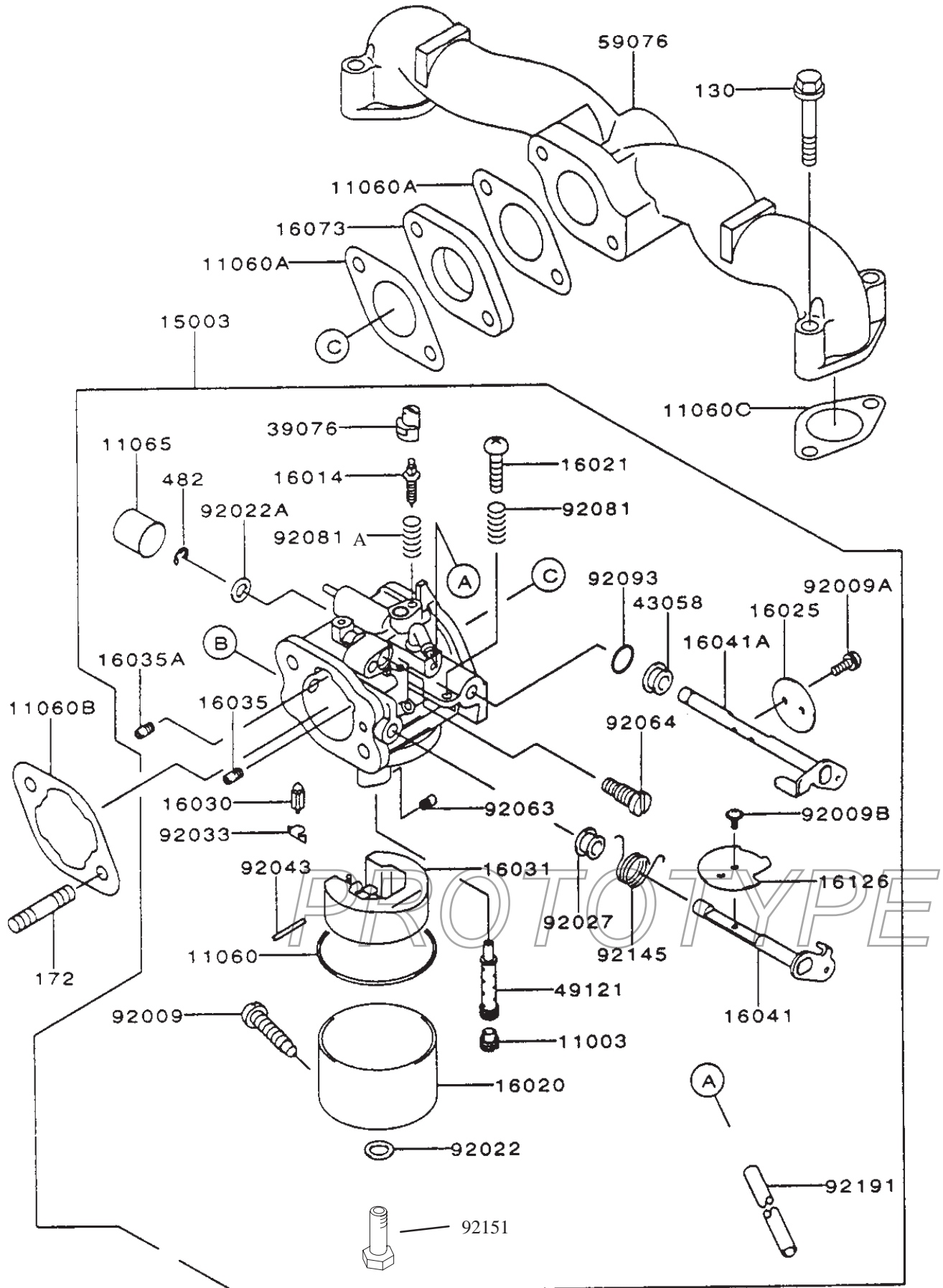
Kawasaki FH500V-AS25

Ref. No.	Part No.	Qty.	Description
13107	13107-7002	1	Shaft
13270	13270-7006	1	Plate
16169	16169-7001	1	Link-Choke
16171	16171-7001	1	Link
39129	39129-7003	1	Spring-Governor
49103	49103-7001	1	Arm-Governor
49113	49113-7001	1	Panel-Comp-Control
92009	92009-7002	1	Screw, 4x30
92145	92145-7003	1	Spring
92145A	92145-7004	1	Spring
92145B	92145-7005	1	Spring
92150	92150-2182	1	Bolt, 5x18
92151	92151-7006	1	Bolt, 6x30
92170	92170-7001	1	Clamp
130	130B0612	2	Bolt-Flanged
214	214B0408	2	Screw-Pan
311	311B0600	1	Nut-Hex
411	411B0600	1	Washer-Plain

Ref. No.	Part No.	Qty.	Description

PROTOTYPE

Carburetor Assembly Kawasaki FH500V-AS25

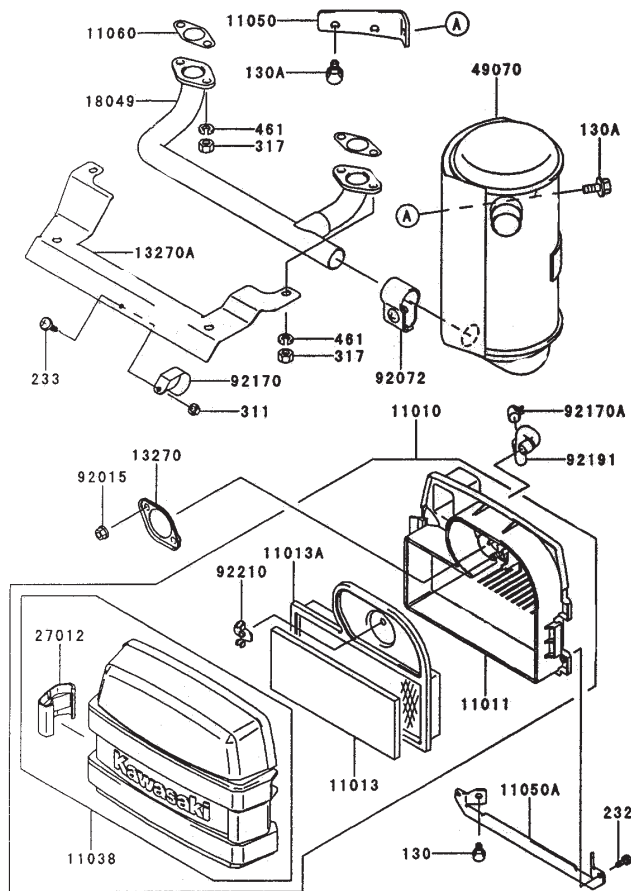


Carburetor Assembly (Continued)

Kawasaki FH500V-AS25

Ref. No.	Part No.	Qty.	Description	Ref. No.	Part No.	Qty.	Description
11003	11003-2105	1	Seat-Valve				
11060	11060-2406	1	Gasket				
11060A	11060-7003	2	Gasket, Insulator				
11060B	11060-7004	1	Gasket, Air Filter				
11060C	11060-7005	2	Gasket				
11065	11065-2061	1	Cap				
15003	15003-2698	1	Carburetor-Assy				
16014	16014-2080	1	Screw-Pilot Air				
16020	16020-2141	1	Chamber-Float				
16021	16021-2060	1	Screw-Throttlestop				
16025	16025-2193	1	Valve-Throttle, #130				
16030	16030-2067	1	Valve-Float				
16031	16031-2066	1	Float				
16035	16035-2060	1	Jet-Air, #1.7				
16035A	16035-2061	1	Jet-Air, #1.2				
16041	16041-2252	1	Shaft-Carburetor, Choke				
16041A	16041-2253	1	Shaft-Carburetor Throttle				
16073	16073-7001	1	Insulator				
16126	16126-2219	1	Valve				
39076	39076-2053	1	Limiter				
43058	43058-3716	1	Ring				
49121	49121-2222	1	Nozzle-Main				
59076	59076-7001	1	Manifold-Intake				
92009	92009-2015	1	Screw				
92009A	92009-2024	2	Screw				
92009B	92009-2081	1	Screw				
92022	92022-2231	1	Washer				
92022A	92022-2239	1	Washer				
92027	92027-2025	1	Collar				
92033	92033-2067	1	Ring-Snap				
92043	92043-2226	1	Pin				
92063	92063-2358	1	Jet-Main				
92064	92064-2125	1	Jet-Pilot				
92081	92081-2009	2	Spring				
92081A	92081-2256	1	Spring				
92093	92093-2002	1	Seal				
92145	92145-2061	1	Spring				
92151	92151-2092	1	Bolt				
92191	92191-7008	1	Tube				
130	130B0635	4	Bolt-Flanged				
172	172G0685	2	Bolt-Stud				
482	482L4000	1	Circlip-Type-E				

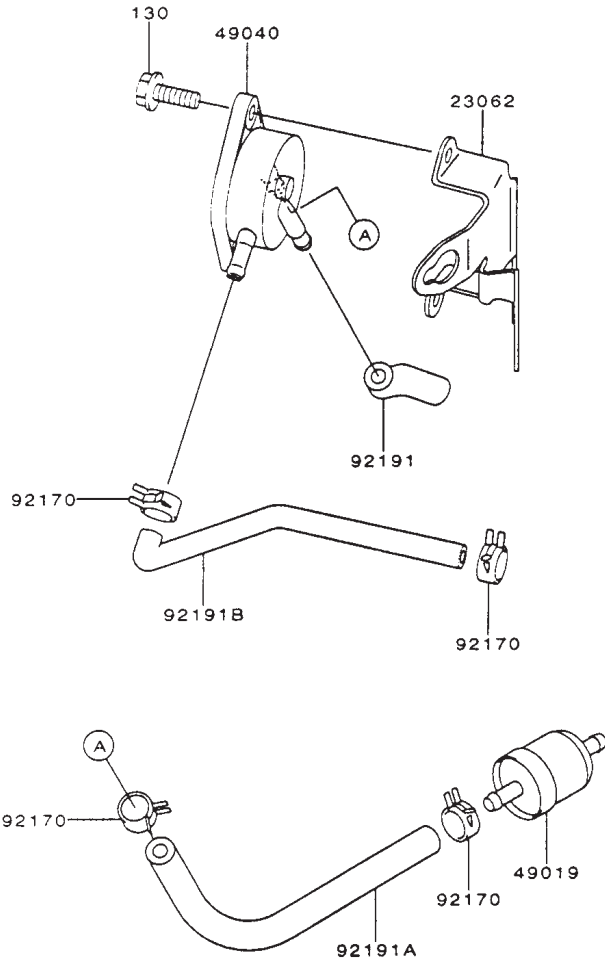
PROTOTYPE



Air Filter / Muffler Assembly Kawasaki FH500V-AS25

Ref. No.	Part No.	Qty.	Description	Ref. No.	Part No.	Qty.	Description
11010	11010-7001	1	Filter-Assy-Air	317	317R0800	4	Nut-Hex-Small
11011	11011-7001	1	Case-Air Filter	461	461F0800	4	Washer-Spring
11013	11013-7001	1	Element-Air Filter				
11013A	11013-7002	1	Element-Air Filter				
11038	11038-7001	1	Case-Assy-Air Filter				
11050	11050-7004	1	Bracket				
11050A	11050-7006	1	Bracket				
11060	11060-7006	2	Gasket, Muffler				
13270	13270-7001	1	Plate				
13270A	13270-7008	1	Plate				
18049	18049-7001	1	Pipe-Exhaust				
27012	27012-7001	2	Hook, Air Filter				
49070	49070-7002	1	Muffler-Comp				
92072	92072-7002	1	Band				
92015	92015-1193	2	Nut				
92170	92170-7002	1	Clamp				
92170A	92170-7003	1	Clamp				
92191	92191-7001	1	Tube				
92210	92210-7004	1	Nut				
130	130B0612	2	Bolt-Flanged				
130A	130B0816	2	Bolt-Flanged				
232	232B0514	2	Screw-Pan-WS				
233	233B0416	1	Screw-Pan WP				
311	311B0400	1	Nut-Hex				

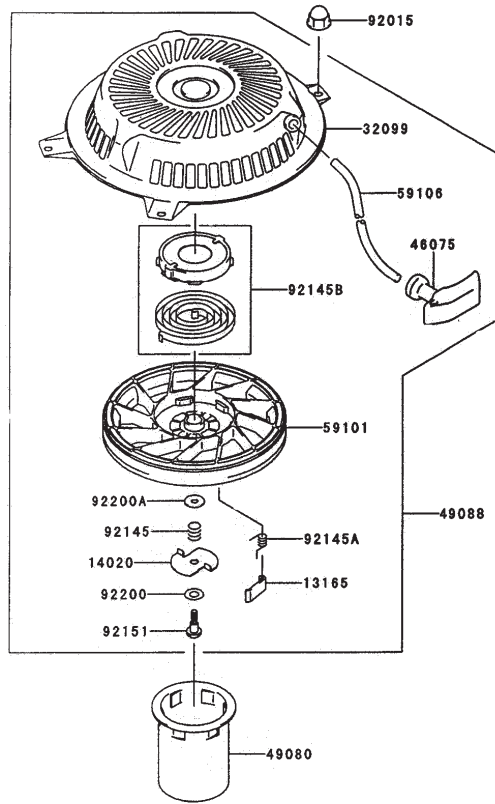
PROTOTYPE



Fuel Tank / Fuel Valve Assembly Kawasaki FH500V-AS25

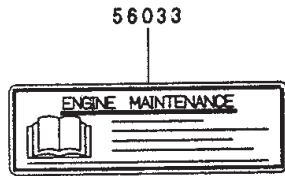
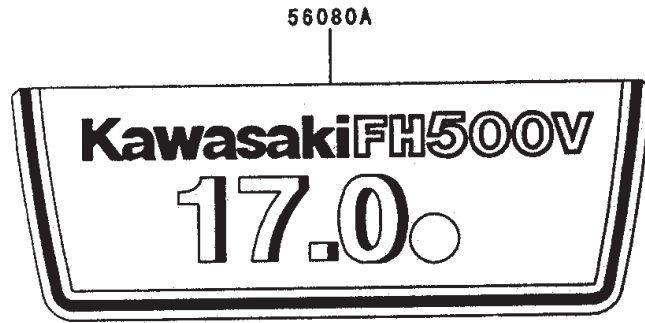
Ref. No.	Part No.	Qty.	Description	Ref. No.	Part No.	Qty.	Description
23062	23062-7001-9H	1	Bracket-Comp				
49019	49019-7001	1	Filter-Fuel				
49040	49040-2075	1	Pump-Fuel				
92170	92170-2088	4	Clamp				
92191	92191-7002	1	Tube				
92191A	92191-7003	1	Tube,6.35x12.7x160				
92191B	92191-7004	1	Tube				
130	130B0620	2	Bolt-Flanged				

PROTOTYPE



Starter Assembly Kawasaki FH500V-AS25

Ref. No.	Part No.	Qty.	Description	Ref. No.	Part No.	Qty.	Description
13165	13165-700	2	Pawl, Recoil Starter				
14020	14020-7001	1	Retainer				
32099	32099-7001	1	Case, Recoil Starter				
46075	46075-7001	1	Grip-Recoil Starter				
49080	49080-7001	1	Pulley-Starting				
49088	49088-7001	1	Starter-Recoil				
59101	59101-7001	1	Reel, Recoil Starter				
59106	59106-7001	1	Rope				
92015	92015-1170	4	Nut				
92145	92145-7006	1	Spring				
92145A	92145-7007	2	Spring				
92145B	92145-7008	1	Spring				
92151	92151-7008	1	Bolt				
92200	92200-7004	1	Washer				
92200A	92200-7005	1	Washer				



Decals Kawasaki FH500V-AS25

Ref. No.	Part No.	Qty.	Description
56033	56033-7001	1	Label-Manual
56080	56080-2077	1	Label-Brand
56080A	56080-7001	1	Label-Brand

Ref. No.	Part No.	Qty.	Description

PROTOTYPE



PROTOTYPE