



## Mid-Size Traction Unit

### ProLine, Gear 15 HP

Model No. 30177-22000001 and Up

## Parts Catalog

### Ordering Replacement Parts

To order replacement parts, please supply: the part number, the quantity, and the description of each part desired.

### Understanding Reference Numbers

Each identified part in an illustration has a reference number. The reference number for a part also appears in the parts list, along with other information about the part.

This catalog uses two special reference number formats, one to indicate parts in a service assembly and another to indicate the quantity of a given part in an illustration.

### Service Assembly Reference Numbers

Parts in service assemblies have reference numbers in the form **a:b**. The **a** represents the reference number of the entire service assembly and the **b** represents a sequential number unique to each part within the service assembly.

For example, a wheel assembly might be identified by reference number **6**, the tire by **6:1**, the valve by **6:2**, and the wheel by **6:3**. When you order the assembly identified by reference number **6**, you receive all parts identified by reference numbers **6:1**, **6:2**, and **6:3**. However, you may also order any part individually.

Reference numbers of this type appear in illustrations and in part lists.

### Reference Numbers Indicating Quantity

In an illustration, if a reference number indicates more than one part, the reference number has the form **nX y**. The **n** represents the quantity of the part, the **X** is the multiplication symbol, and the **y** represents the reference number.

For example, in an illustration, the reference number **2X 37** means that two of the parts identified by reference number **37** are indicated.

## Contents

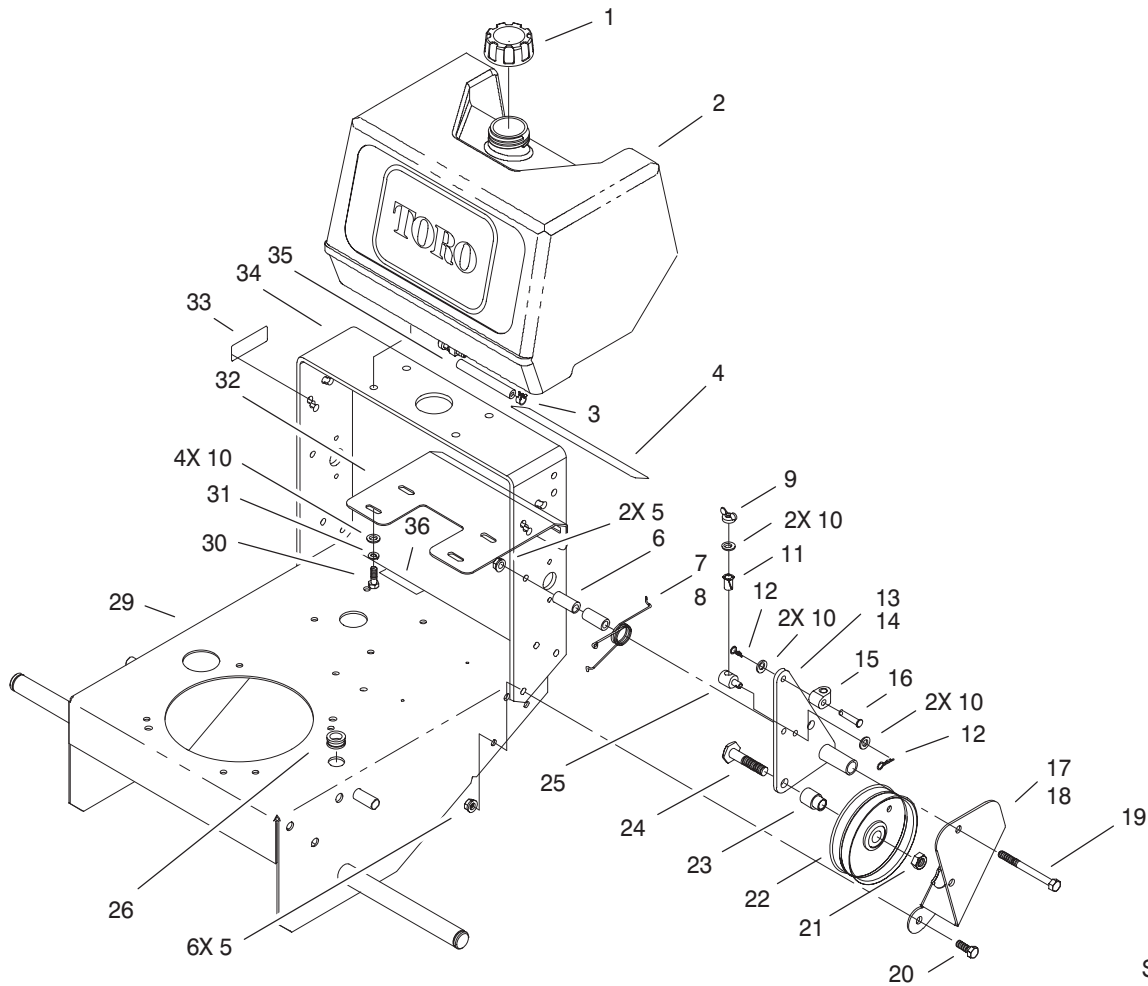
Description	Page	Description	Page
Fuel Tank and Idler Bracket Assembly . . . . .	3	Blower Housing and Baffles Assembly	
Transmission and Idler Pulley Assembly . . . . .	4	Kohler CV15T-PS-41560 . . . . .	14
Brake, Wheel Pulley and Wheel Assembly . . . . .	5	Starter Assembly	
Wheel Assembly . . . . .	6	Kohler CV15T-PS-41560 . . . . .	15
Handle and Control Panel Assembly . . . . .	7	Fuel Assembly	
Engine Assembly . . . . .	8	Kohler CV15T-PS-41560 . . . . .	16
Clutch Assembly . . . . .	9	Engine Control Assembly	
Crankcase Assembly		Kohler CV15T-PS-41560 . . . . .	17
Kohler CV15T-PS-41560 . . . . .	10	Air Cleaner Assembly	
Oil Pan and Lubrication Assembly		Kohler CV15T-PS-41560 . . . . .	18
Kohler CV15T-PS-41560 . . . . .	11	Exhaust Assembly	
Cylinder Head, Valves and Breather Assembly		Kohler CV15T-PS-41560 . . . . .	19
Kohler CV15T-PS-41560 . . . . .	12		
Ignition and Electrical Assembly			
Kohler CV15T-PS-41560 . . . . .	13		

## Accessories

Description	Model / Part No.	Description	Model / Part No.
36" Cutting Unit . . . . .	30135	37" Baggin Kit (Cloth Bag) . . . . .	30129
37" Recycler Deck . . . . .	30137	37" Baggin Kit (Steel Hopper) . . . . .	30130
44" Cutting Unit . . . . .	30144	44" and 52" Baggin Kits . . . . .	30128
44" Recycler Deck . . . . .	30146	Front Weight Kit for 37" Cutting Unit . . . . .	80-3350
52" Cutting Unit . . . . .	30153	Steerable Sulky) . . . . .	30123
52" Recycler Deck . . . . .	30154	Electric Start Kit . . . . .	74-0980

Part descriptions in this catalog may include the following abbreviations.

Abbreviation	Meaning	Abbreviation	Meaning
AR . . . . .	as required	HYD . . . . .	hydraulic
ASM . . . . .	assembly	INC . . . . .	incorporated
CARR . . . . .	carriage	LH . . . . .	left hand
DEG . . . . .	degrees	NI . . . . .	nylon insert
FH . . . . .	flat head	PPH . . . . .	Phillips pan head
GA . . . . .	gauge	PTH . . . . .	Phillips truss head
HF . . . . .	hex flange	PTO . . . . .	power take off
HH . . . . .	hex head	RH . . . . .	right hand
HHF . . . . .	hex head flange	SFH . . . . .	slotted fillister head
HLH . . . . .	hex lag head	SHH . . . . .	slotted hex head
HJ . . . . .	hex jam	SQH . . . . .	square head
HOC . . . . .	height-of-cut	SHWH . . . . .	slotted hex washer head
HS . . . . .	hex socket	SPH . . . . .	slotted pan head
HSBH . . . . .	hex socket button head	SRH . . . . .	slotted round head
HSFH . . . . .	hex socket flat head	STD . . . . .	standard
HSH . . . . .	hex socket head	TAP . . . . .	self tapping
HWH . . . . .	hex washer head	TTH . . . . .	Torx truss head
HWHTF . . . . .	hex washer head thread forming	WH . . . . .	wing head

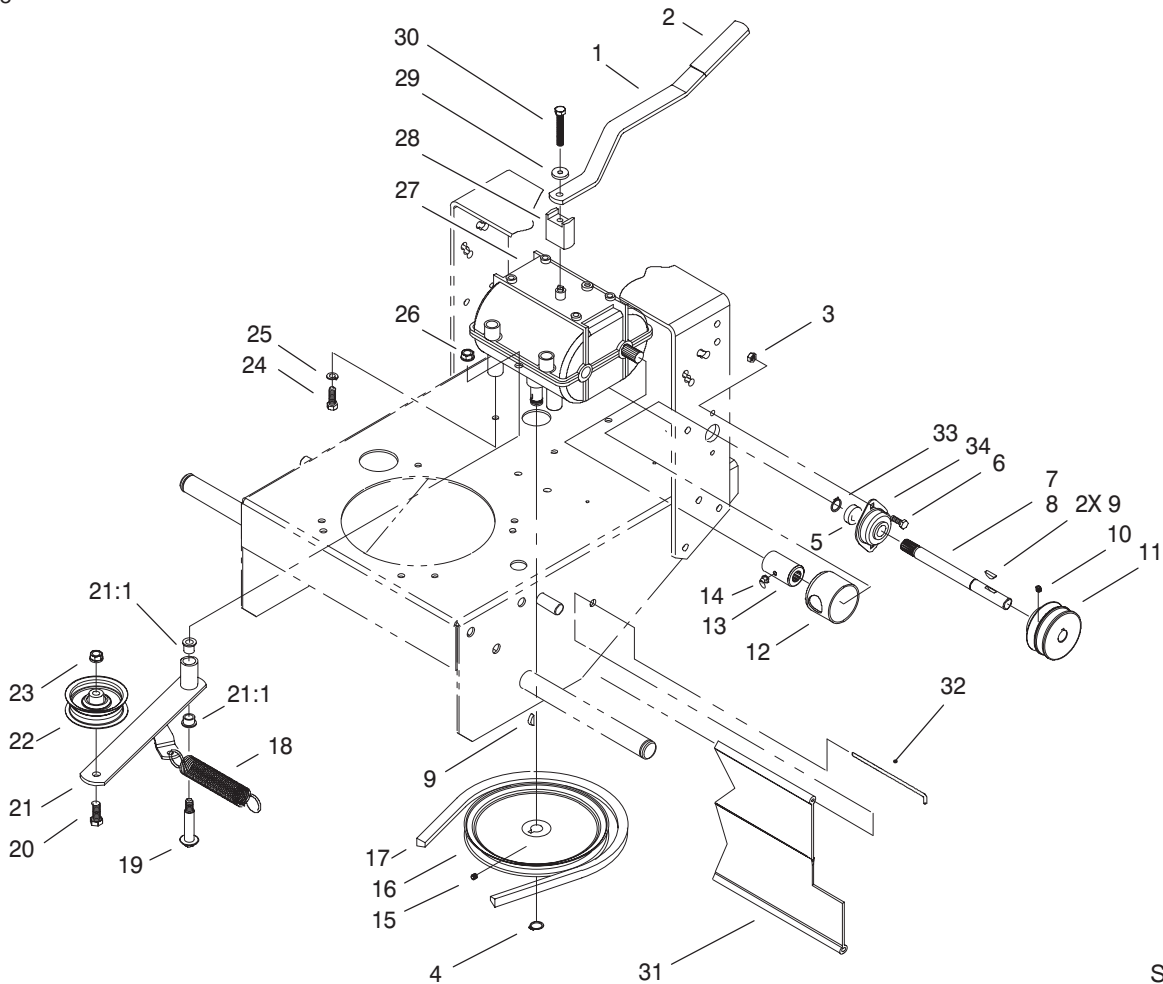


Sheet No.:2

## Fuel Tank and Idler Bracket Assembly

Ref. No.	Part No.	Qty.	Description
1	55-3570	1	Gas Cap ASM
2	95-2802	1	Tank-Fuel
3	2412-98	2	Clamp
4	82-7750	1	Decal-Ground Speed
5	3296-39	8	Nut-Lock, NI
6	74-0040	4	Spacer-Pivot, Idler
7	51-4370	1	Spring-Torsion, RH
8	51-4380	1	Spring-Torsion, LH
9	32103-25	2	Nut-Wing
10	3256-23	10	Washer-Flat
11	52-2890	2	Bushing-Nylon
12	3290-307	4	Pin-Hair
13	74-0230-01	1	Bracket-Idler, RH
14	74-0220-01	1	Bracket-Idler, LH
15	74-0521	2	Fitting-Rod
16	283-6	2	Pin-Clevis
17	67-6370-01	1	Bracket-Support, RH
18	67-6380-01	1	Bracket-Support, LH
19	323-16	2	Screw-HH
20	323-6	6	Screw-HH
21	3296-23	2	Nut-Lock, NI
22	95-2800	2	Pulley-Idler
23	95-2801	2	Spacer-Pulley
24	51-4450	2	Screw-Leveler
25	68-9690	2	Fitting-Rod
26	237-124	1	Grommet

Ref. No.	Part No.	Qty.	Description
29	93-1156-01	1	Frame
30	322-4	4	Screw-HH
31	3253-4	4	Washer-Lock
32	66-7400-01	1	Plate-Control
33	95-2814	1	Decal-Shut Off, Fuel
34	74-0360-01	1	Frame-Rear
35	47-2964	1	Hose-Fuel
36	98-0776	1	Decal-Caution



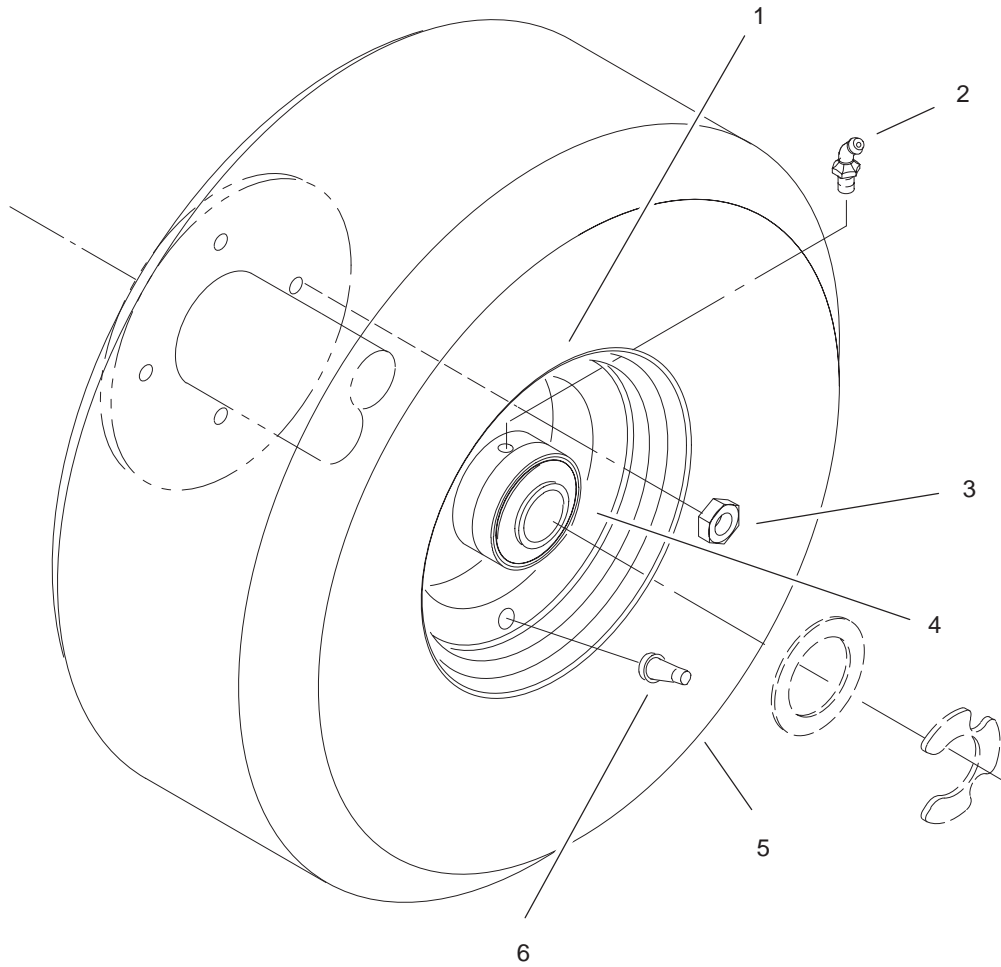
Sheet No.:3

## Transmission and Idler Pulley Assembly

Ref. No.	Part No.	Qty.	Description
1	74-0320-01	1	Lever-Shift
2	47-1970	1	Grip
3	3296-42	4	Nut-Lock, NI
4	32120-64	1	Ring-Snap, External
5	1-323252	2	Bearing-Shaft
6	321-4	4	Screw-HH
7	98-0788	1	Shaft-Extension, RH
8	98-0787	1	Shaft-Extension, LH
9	3257-5	3	Key-Woodruff
10	3245-3	2	Screw-Set, HS
11	105-0828	2	Pulley-Transmission
12	51-4220	2	Guard-Coupler
13	98-0789	2	Coupler
14	302-5	2	Fitting-Grease
15	3245-1	1	Screw-Set, HSH
16	51-4190	1	Pulley-Driven
17	26-9671	1	V-Belt
18	68-2190	1	Spring
19	27-6230	1	Bolt-Wheel
20	323-8	1	Screw-HH
21	16-7509	1	Lever-Idler
21:1	256-155	2	Bushing-Flange
22	62-4540	1	Pulley
23	3296-39	1	Nut-Lock, NI
24	322-2	4	Screw-HH
25	3253-4	4	Washer-Lock

Ref. No.	Part No.	Qty.	Description
26	3296-6	1	Nut-Lock, NI
27	98-0791	1	Transmission
28	72-2190	1	Mount-Lever, Shift
29	7-5461	1	Spacer
30	329-10	1	Screw-HH
31	95-1526	1	Shield-Trailing
32	95-1529	1	Rod-Shield
33	32151-62	2	Ring-Retaining
34	1-323254	2	Flange-Output





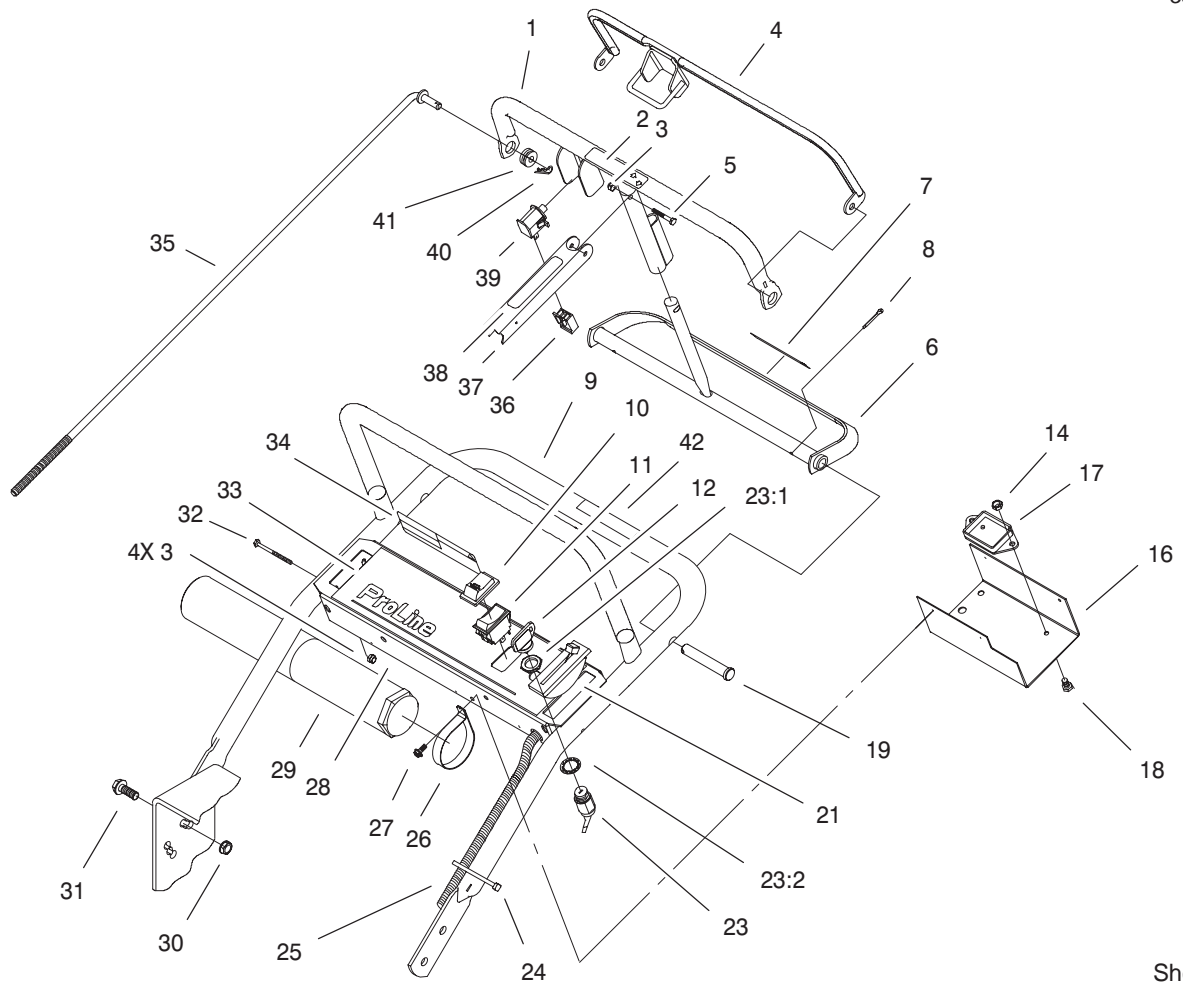
Sheet No.:A1

### Wheel Assembly

Ref. No.	Part No.	Qty.	Description
1	242-80	1	Wheel And Hub ASM
2	302-11	1	Fitting-Lube, 45°
3	3296-29	4	Nut-Lock, NI
4	92-1746	2	Bearing-Ball
5	231-117	1	Tire
6	232-27	1	Stem-Valve

Ref. No.	Part No.	Qty.	Description

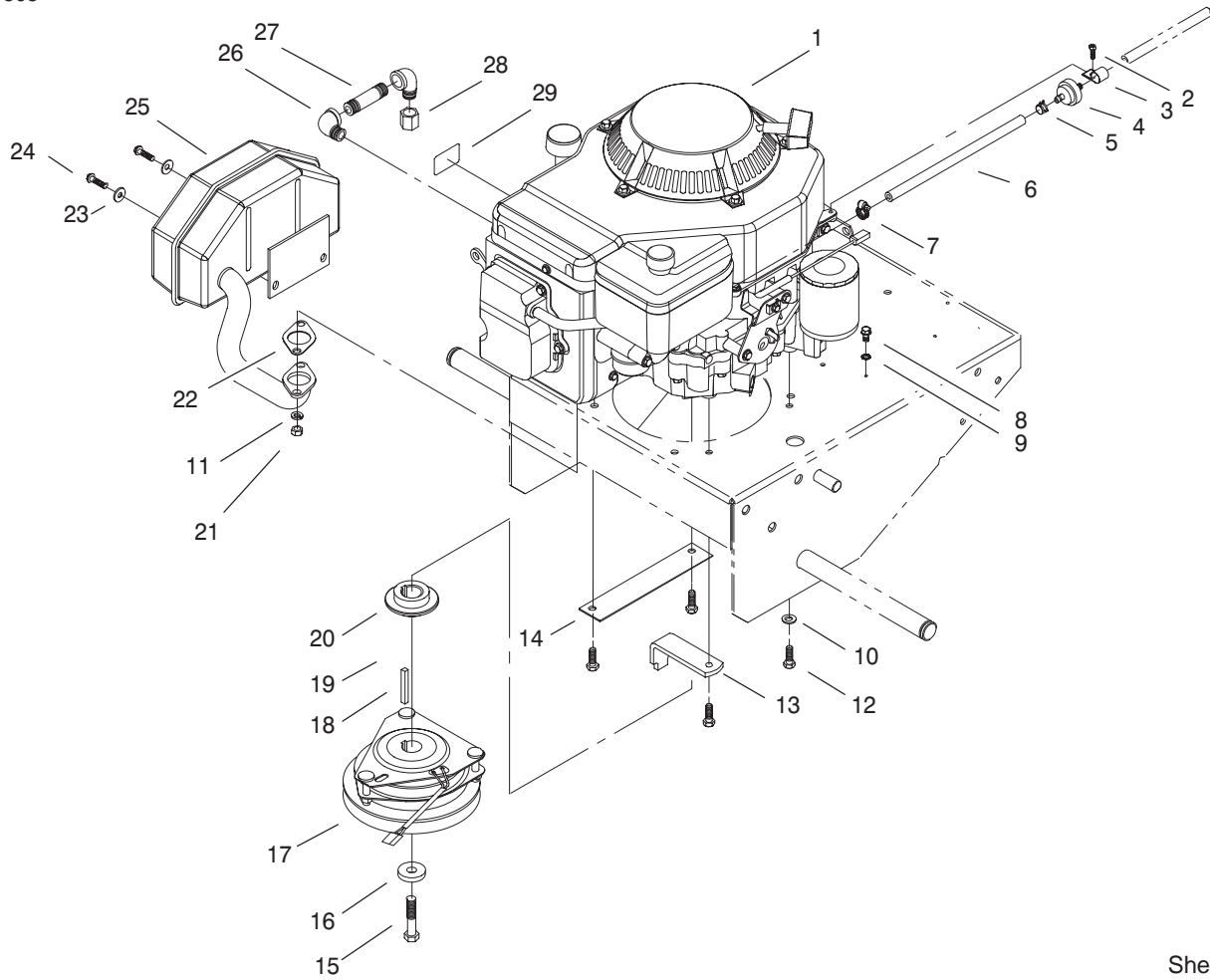
PROTOTYPE



Sheet No.:5

## Handle and Control Panel Assembly

Ref. No.	Part No.	Qty.	Description	Ref. No.	Part No.	Qty.	Description
1	82-7690-03	1	Bar-Control	28	82-2180-03	1	Panel-Control
2	82-2290	1	Decal-Bar, Control	29	74-0720	1	Tube-Manual
3	3296-2	5	Nut-Lock	30	32128-21	4	Nut-HF
4	82-7680-03	1	Bail	31	3234-11	4	Screw-HHF
5	32105-1	1	Screw-SHH	32	32105-14	4	Screw
6	99-8501-03	1	Control-Pivot	33	82-7730	1	Decal-Control Panel
7	82-2280	1	Decal-Handle, Reverse	34	105-0884	1	Decal-Danger
8	3272-11	2	Pin-Cotter	35	82-7631	2	Rod-Control
9	67-6440-01	1	Handle-Upper	36	218-595	1	Connector-Body
10	82-3820	1	Boot-Switch	37	51-4850-03	1	Lever-Brake, Parking
11	82-2300	1	Switch	38	52-2010	1	Decal-Lever, Parking
12	63-8360	2	Key-Ignition	39	82-2190	1	Switch-Bail
14	3296-42	1	Nut-Lock, NI	40	3290-307	2	Pin-Hair
16	93-1187-03	1	Panel-Bottom	41	237-141	2	Grommet-Rubber
17	100-6170	1	Module-Delay	42	98-4387	1	Decal-Protection, Ear
18	321-2	1	Screw-HH				
19	283-55	2	Pin-Clevis				
21	74-0630	1	Control-Throttle				
23	29-5560	1	Switch-On/Off				
23:1	218-461	1	Nut-HH				
23:2	3254-5	1	Washer-Lock, Internal				
24	3290-378	2	Tie-Cable				
25	100-3284	1	Harness-Wire, Recoil				
26	2412-120	2	R-Clamp				
27	32104-76	4	Screw				



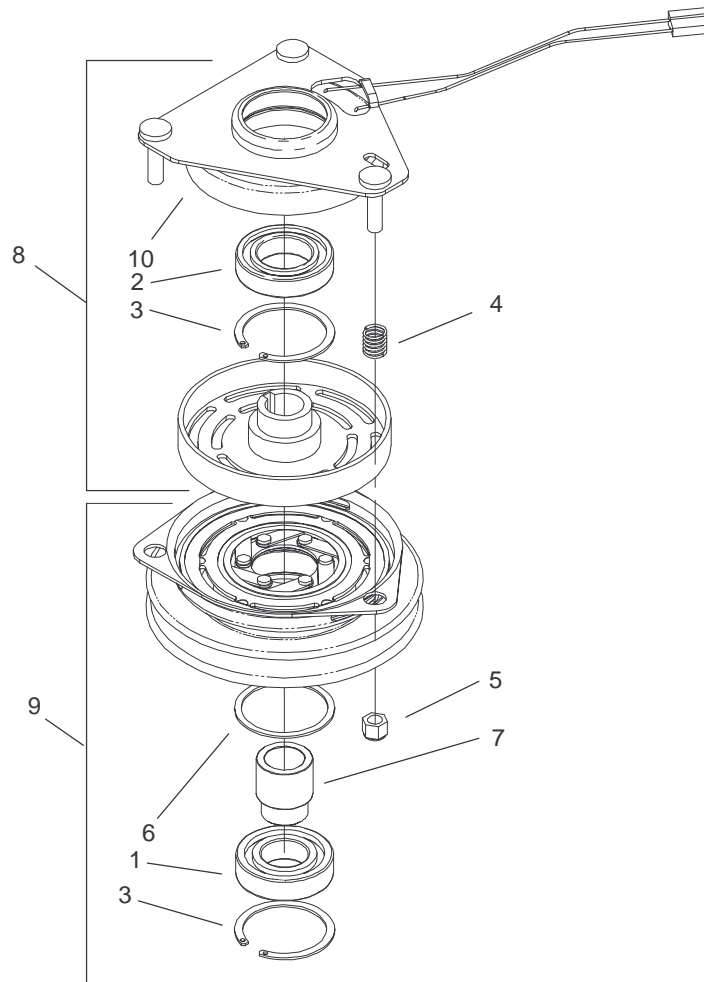
Sheet No.:6

## Engine Assembly

Ref. No.	Part No.	Qty.	Description
☆1		1	Engine-Kohler, Cv15t-Ps-41560
2	32144-19	1	Screw-Forming, Thread
3	2412-87	1	Clamp-Cable
4	56-6360	1	Filter-Fuel
5	2412-98	1	Clamp
6	47-2982	1	Hose-Fuel
7	2412-108	1	Clamp-Worm
8	12-3270	1	Screw
9	3255-7	1	Washer-Lock/Ext
10	3256-23	1	Washer-Flat
11	3253-4	2	Washer-Lock
12	33114-025	4	Screw-HH
13	51-4540-03	1	Retainer-Clutch
14	74-0930-01	1	Guard-Pulley
15	3212-9	1	Screw-HH
16	112843	1	Washer
17	54-3200	1	Clutch/Brake ASM
18	608006	1	Key
20	105-0827	1	Pulley-Drive
21	93-7034	2	Nut-Muffler
22	93-7032	1	Gasket-Exhaust
23	3256-78	2	Washer-Flat
24	93-7033	2	Screw-Muffler
25	95-5517	1	Muffler

Ref. No.	Part No.	Qty.	Description
26	74-0950	2	Elbow-Street, 90°
27	289-20	1	Nipple-Pipe
28	288-4	1	Cap-Pipe
29	63-8440	1	Decal-Surface, Hot

☆ Not serviced separately

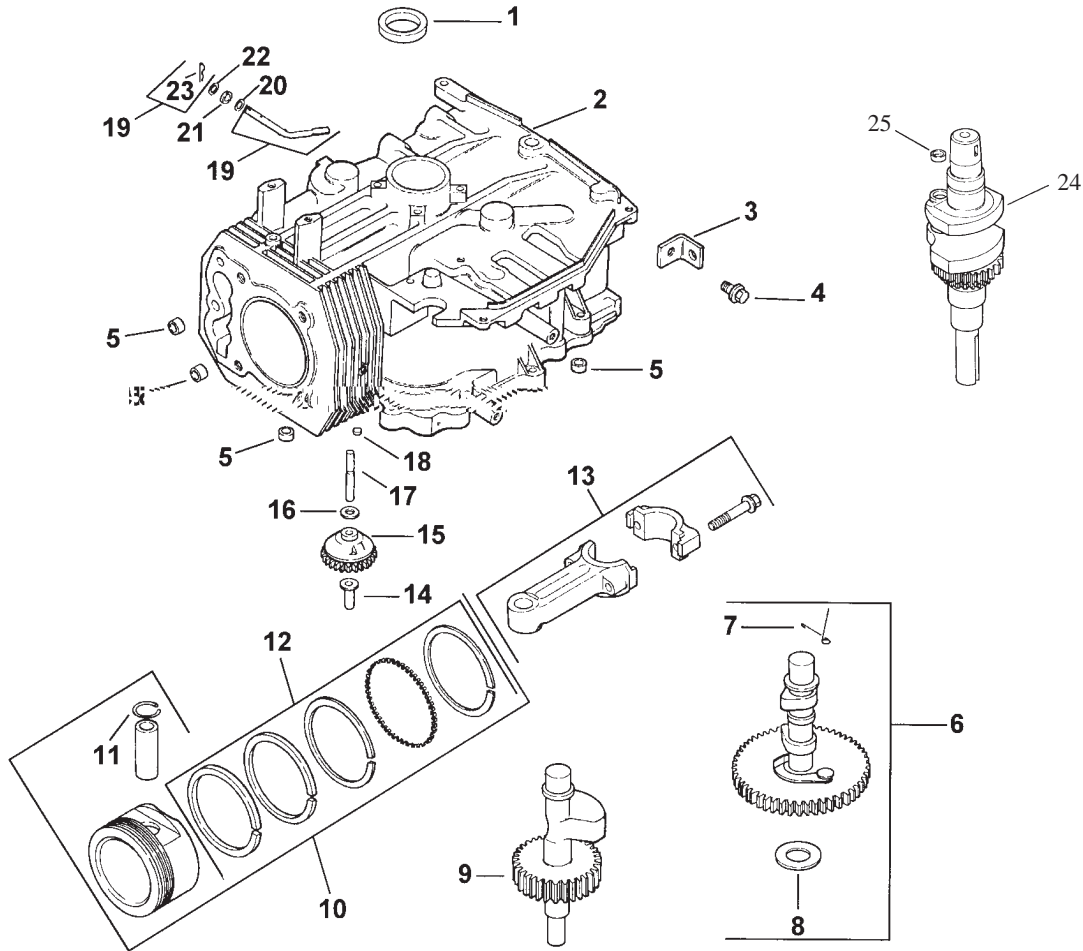


Sheet No.:A2

### Clutch Assembly

Ref. No.	Part No.	Qty.	Description
1	251-291	1	Bearing-Pulley
2	251-292	1	Bearing-Field
3	44-8310	2	Ring-Retaining
4	44-8320	3	Spring
5	3296-6	3	Nut-Lock, NI
6	44-8330	1	Spacer-Bearing, Pulley
7	44-8340	1	Collar-Bearing
8	44-8360	1	Field Coil-Rotor, Bearing ASM
9	44-8370	1	Armature Pulley, Bearing ASM
10	54-0230	1	Field Bearing ASM

Ref. No.	Part No.	Qty.	Description

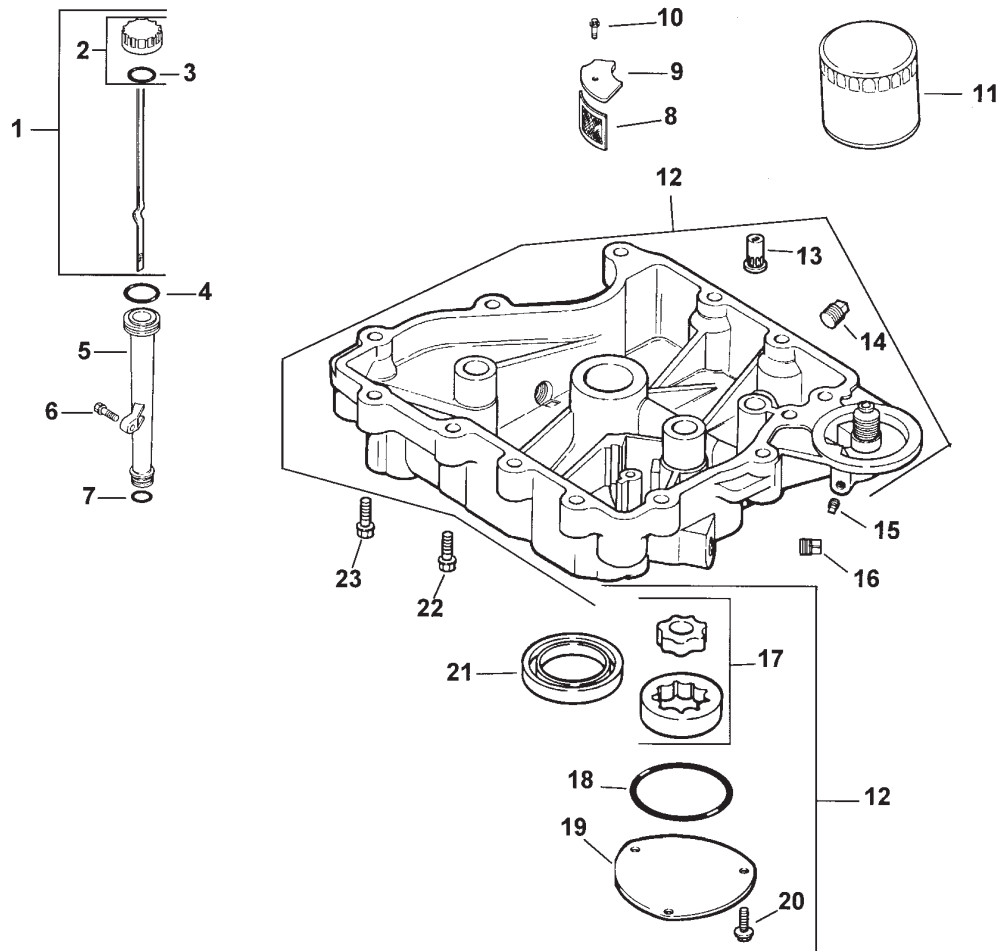


## Crankcase Assembly Kohler CV15T-PS-41560

Ref. No.	Part No.	Qty.	Description
1	12 032 03	1	Seal-Crankshaft
2	12 522 18	1	Shortblock
3	12 445 02	1	Strap-Lifting
4	M-0839025	1	Screw M8x1.25x22
5	12 380 17	4	Dowel-Locating
6	12 755 49	1	Kit-Camshaft INC
7	12 089 31	1	Spring-Actuating
8	12 422 07	A/R	Shim-Camshaft A/R
8	12 422 08	1	Shim-Camshaft A/R
8	12 422 09	A/R	Shim-Camshaft A/R
8	12 422 10	A/R	Shim-Camshaft A/R
8	12 422 11	A/R	Shim-Camshaft A/R
8	12 422 12	A/R	Shim-Camshaft A/R
8	12 422 13	A/R	Shim-Camshaft A/R
9	12 144 27	1	Shaft-Balance
10	12 847 07	1	Set Piston w/Ring STD
10	12 847 08	1	Set-Piston w/Ring .25
10	12 847 09	1	Set-Piston w/Ring .50
11	12 018 02	2	Retainer-Piston Pin
12	12 108 07	1	Ring Set STD
12	12 108 08	1	Ring Set .25
12	12 108 09	1	Ring Set .50
13	12 067 05	1	Rod Connecting STD

Ref. No.	Part No.	Qty.	Description
13	12 067 06	1	Rod Connecting .25
14	12 380 01	1	Pin-Governor Regulating
15	12 043 05	1	Gear-Governor ASM
16	M-0631005	1	Washer-Governor
17	12 144 02	1	Shaft-Governor Gear
18	52 139 09	1	Plug-Cup
19	12 755 64	1	Kit - Shaft-Governor Cross (Incl. Ref.#23)
20	X-25-102	1	Washer-Flat
21	12 032 01	1	Seal-Governor Shaft
22	M-0631015	1	Washer-Governor Shaft
23	12 154 05	1	Clip - Hitch Pin
24	12 014 30	1	Crankshaft ASM
25	12 139 01	1	Plug-Cup
*	12 030 02	1	Bearing - Crankshaft 0.25
*	12 030 03	1	Bearing - Crankshaft 0.50
*	12 755 82	1	Set - Gasket

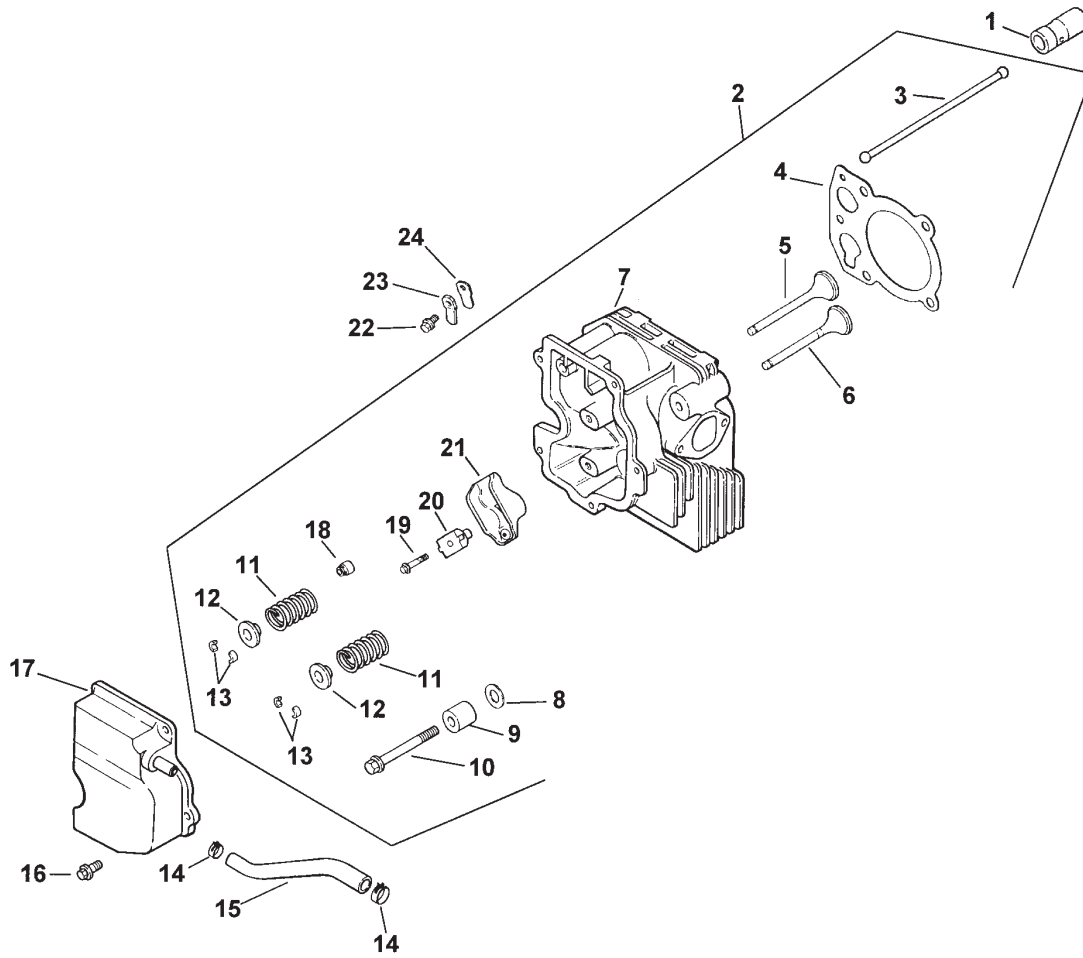
\* Not illustrated  
Obtain Parts From Kohler



## Oil Pan and Lubrication Assembly Kohler CV15T-PS-41560

Ref. No.	Part No.	Qty.	Description	Ref. No.	Part No.	Qty.	Description
1	12 038 01	1	Dipstick INC 2-3	20	M-0545016	3	Screw M5x0.8x16
2	25 755 13	1	Kit-Oil Cap INC 3	21	12 032 03	1	Seal-Crankshaft
3	12 153 03	1	O Ring-Fill Cap	22	24 086 16	11	Screw-M8X1.25X45
4	12 153 02	1	O Ring-Upper Fill Tube	23	24 068 17	1	Screw-M5X1.25X45
5	12 123 04	1	Tube-Oil Fill				
6	M-0545020	1	Screw M5x0.8x20				
7	12 153 01	2	O Ring-Lower Fill Tube				
8	25 162 07	1	Screen-Oil				
9	12 096 03	1	Cover-Oil Pickup Screen				
10	M-0545016	1	Screw M5x0.8x16				
11	52 050 02	1	Filter-Oil				
12	12 199 45	1	Pan - Oil (Incl. Ref. #13, 14, 17-20)				
13	25 462 09	1	Valve - Oil Pressure				
14	X-75-2	2	Plug-1/4nptf				
15	X-75-1	2	Plug-1/8nptf				
16	X-75-10	2	Plug-SH 3/8 NPTF				
17	12 393 01	1	Pump-Oil				
18	12 153 06	1	O Ring-Oil Pump Cover				
19	12 096 34	1	Cover-Oil Pump				

Obtain Parts From Kohler

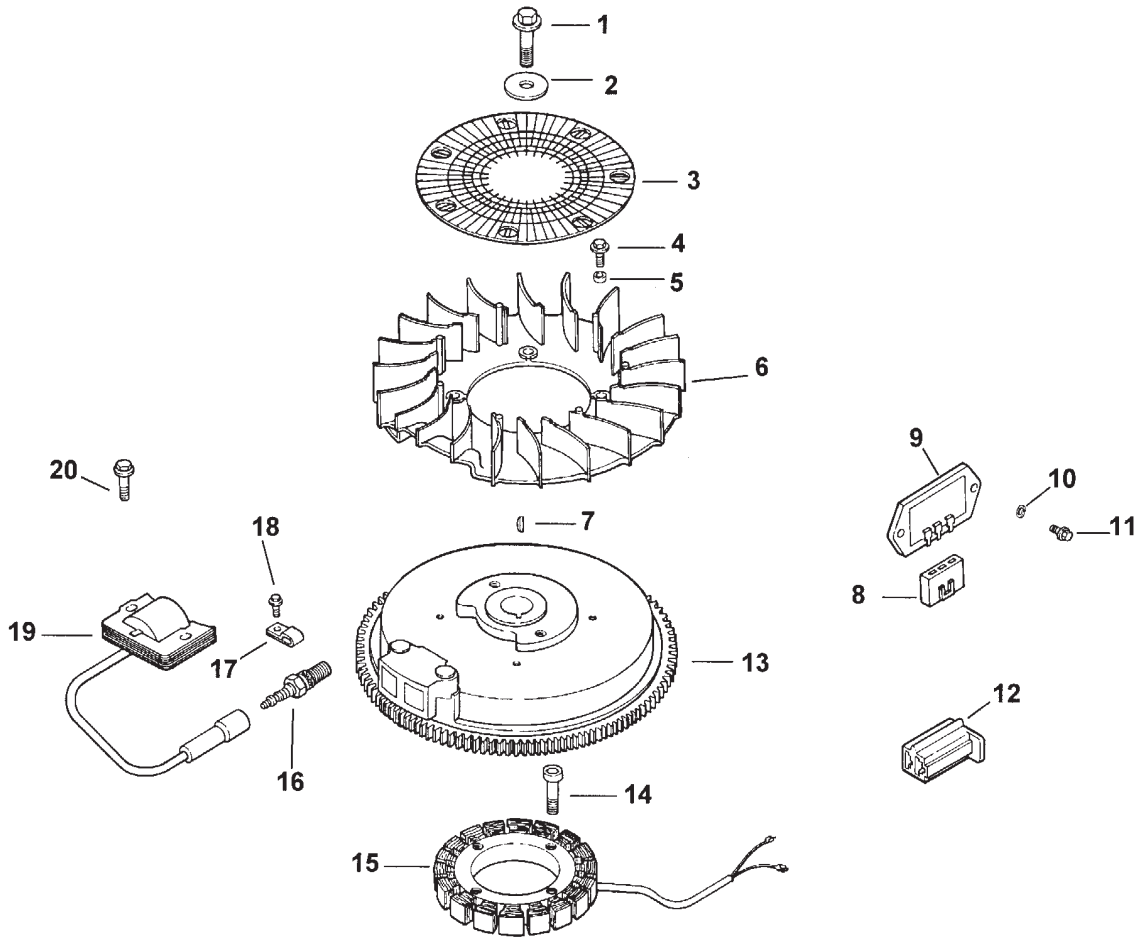


## Cylinder Head, Valves and Breather Assembly Kohler CV15T-PS-41560

Ref. No.	Part No.	Qty.	Description
1	12 351 02	2	Lifter-Valve
2	12 755 81	1	Kit-Cylinder Head
3	12 411 01	2	Rod-Push
4	12 041 10	1	Gasket-Cylinder Head
5	12 017 01	1	Valve-Intake STD
5	12 017 02	1	Valve-Intake .25
6	12 016 01	1	Valve-Exhaust STD
6	12 016 02	1	Valve-Exhaust .25
7	12 318 19	1	Head - Cylinder
8	12 468 05	1	Washer-Flat
9	12 112 13	1	Spacer-Head Bolt Exhaust
10	12 086 15	5	Screw M10x1.5x80
11	12 089 01	1	Spring-Valve
12	12 173 01	2	Cap-Valve Spring
13	12 755 03	2	Kit-Retainer
14	X-426-9	2	Clamp-Hose
15	12 326 03	1	Hose-Breather
16	M-0645020	3	Screw-HH M6x1.0x20
17	12 096 07	1	Cover-Valve w/Nipple
18	24 023 05	1	Seal-Valve Spring
19	M-0640034	2	Screw M6x1.0x34
20	12 599 03	2	Pivot - Rocker Arm
21	25 186 01	2	Arm-Rocker

Ref. No.	Part No.	Qty.	Description
22	M-0545010	1	Screw M5x0.8x10
23	12 018 01	1	Retainer-Breather
24	12 402 02	1	Reed-Breather

Obtain Parts From Kohler

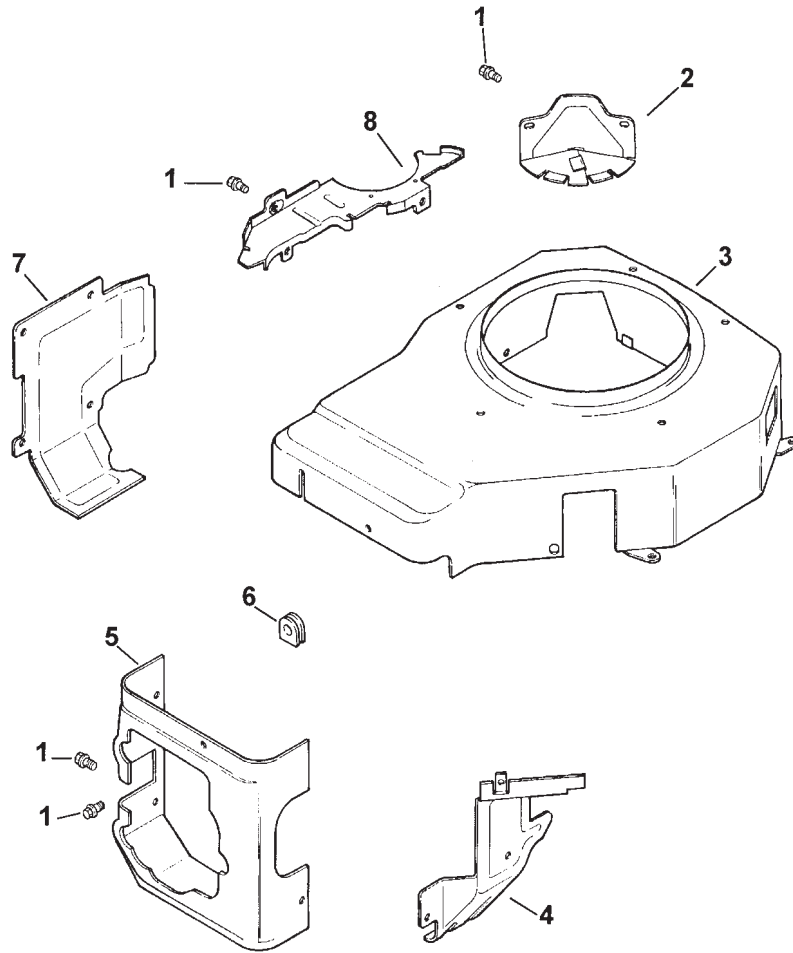


## Ignition and Electrical Assembly Kohler CV15T-PS-41560

Ref. No.	Part No.	Qty.	Description	Ref. No.	Part No.	Qty.	Description
1	12 086 14	1	Screw-Flywheel Mounting		12 518 01	1	Lead-White
2	12 486 03	1	Washer-Flat	*	25 518 05	1	Lead-Black
3	12 162 03	1	Screen-Grass	*	25 518 29	1	Lead-Black
4	M-0639016	4	Screw M6x1.0x16	*	24 126 71	1	Bracket - Stator Wire
5	12 112 01	4	Spacer-Fan				
6	12 157 02	1	Fan				
7	X-42-15	1	Key				
8	236602	1	Connector-Regulator				
9	12 403 01	1	Rectifier-Unregulated				
10	X-22-11	2	Washer - Lock				
11	M-0639016	2	Screw M6x1.0x16				
12	41 155 03	1	Connector				
13	12 025 33	1	Flywheel ASM				
14	M-0548025	4	Screw M5x0.8x25				
15	54 755 09	1	Kit - Stator-15 Amp (Incl.Bracket P/N #24 126 71)				
16	12 132 02	1	Spark Plug				
17	X-728-1	2	Clip-Kill Lead				
18	M-0545010	1	Screw M5x0.8x10				
19	12 584 02	1	Module-Ignition				
20	M-0545020	2	Screw M5x0.8x20				
*	X-25-5	1	Washer				

PROTOTYPE

\* Not illustrated  
**Obtain Parts From Kohler**

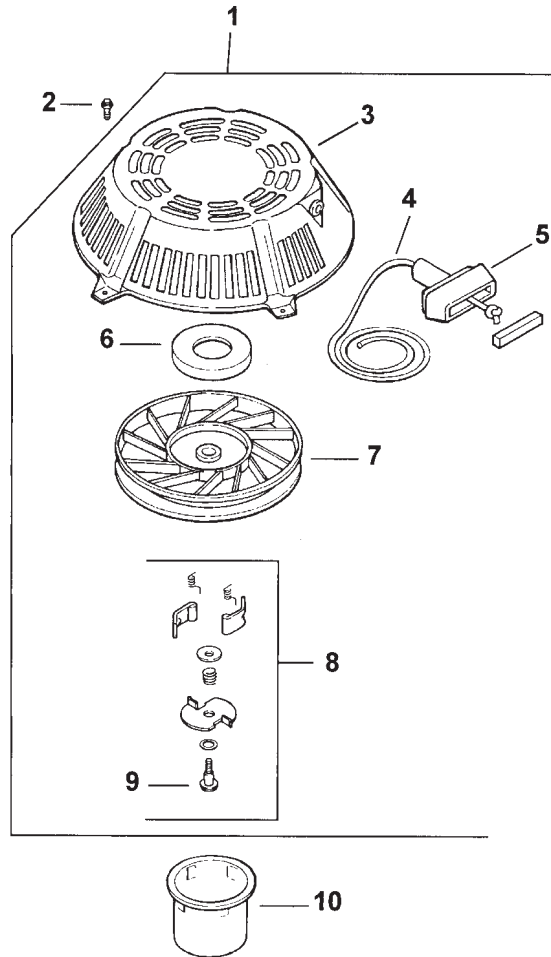


## Blower Housing and Baffles Assembly Kohler CV15T-PS-41560

Ref. No.	Part No.	Qty.	Description	Ref. No.	Part No.	Qty.	Description
1	M-0545010	15	Screw M5x0.8x10				
2	12 096 29	1	Cover-Starter				
3	12 027 37	1	Housing-Blower				
4	12 063 05	1	Baffle-Carburetor				
5	12 063 08	1	Baffle-Cyl. Head				
6	12 313 03	1	Grommet-Blower				
7	12 063 01	1	Baffle-Cylinder				
8	12 146 07	1	Plate-Blower Housing				
*	12 133 67	1	Decal-Horsepower				

PROTOTYPE

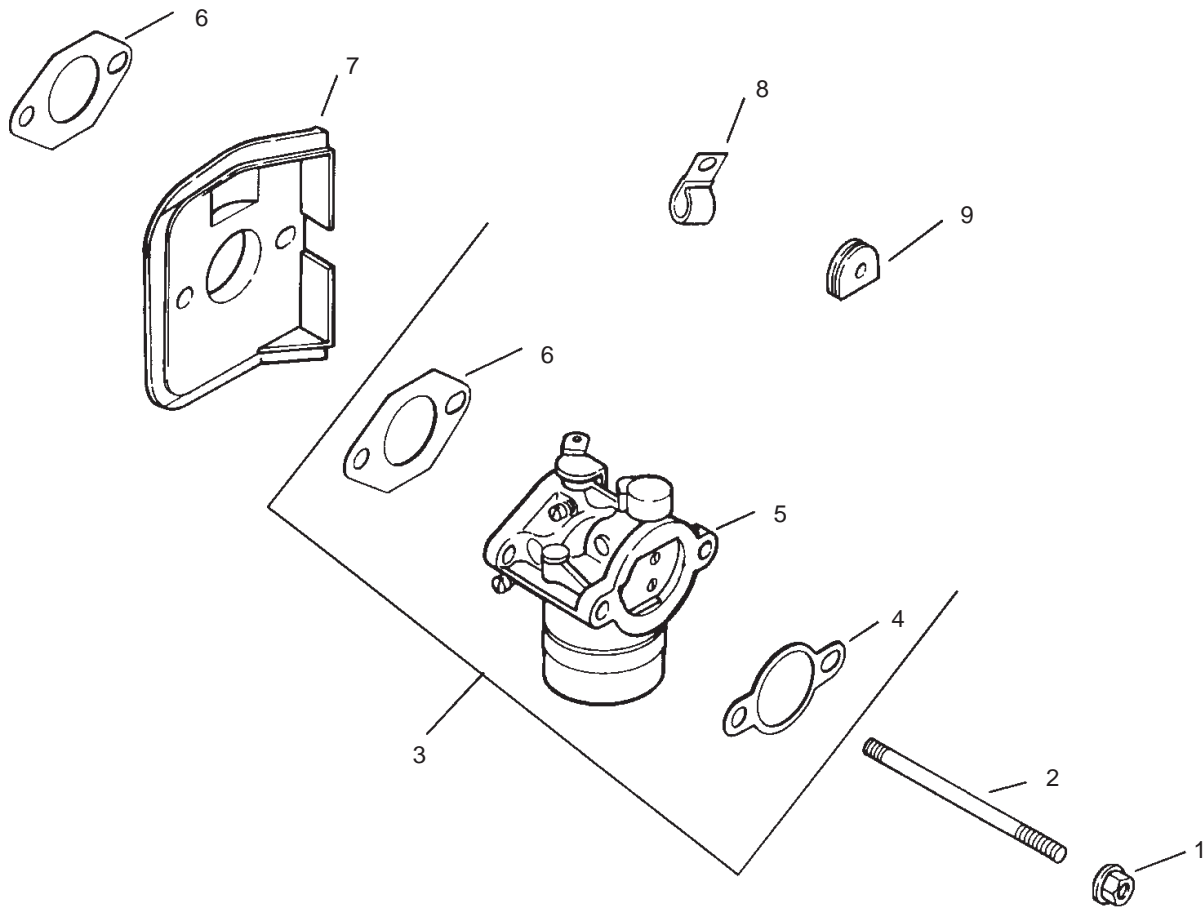
\* Not illustrated  
Obtain Parts From Kohler



## Starter Assembly Kohler CV15T-PS-41560

Ref. No.	Part No.	Qty.	Description	Ref. No.	Part No.	Qty.	Description
1	12 165 01	1	Starter Incl 3-9				
2	M-0545010	5	Screw M5x0.8x10				
3	12 081 01	1	Housing-Starter				
4	12 160 01	1	Rope-Starter				
5	25 166 01	1	Handle-Recoil				
6	12 089 06	1	Spring & Keeper				
7	12 093 01	1	Pulley				
8	12 757 06	1	Kit-Dog Replacement (incl. Ref.#9)				
9	41 086 09	1	Screw-Posidrive				
10	15 109 01	1	Cup-Driver				
*	12 113 07	1	Decal-Starting				

\* Not illustrated  
Obtain Parts From Kohler

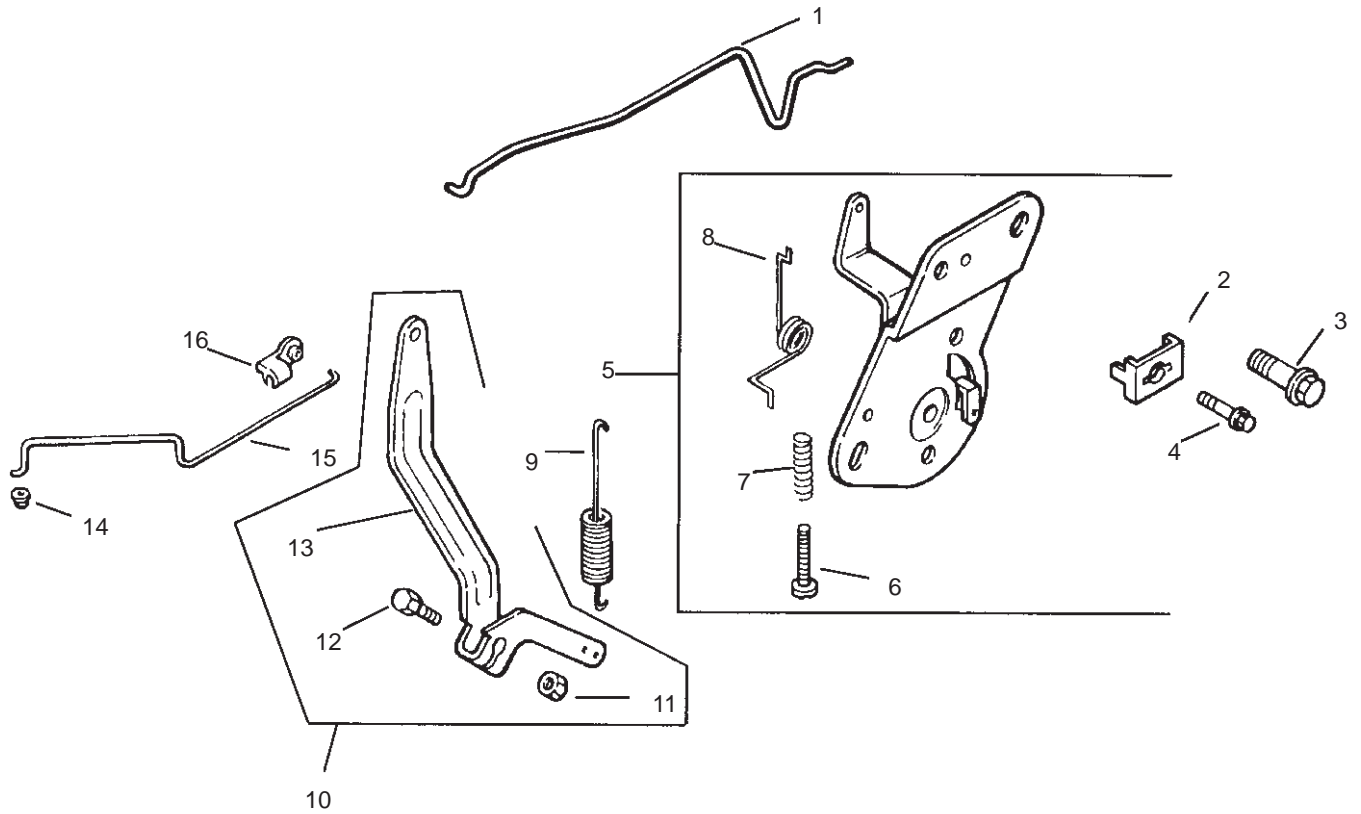


## Fuel Assembly Kohler CV15T-PS-41560

Ref. No.	Part No.	Qty.	Description	Ref. No.	Part No.	Qty.	Description
1	M-0641060	2	Nut M6x1.0				
2	M-0629122	2	Stud M6x1.0x110				
3	12 853 80	1	Kit-Carburetor w/Gaskets				
4	12 041 02	1	Gasket-Air Cleaner				
5	12 053 80	1	Carburetor ASM				
6	12 041 01	2	Gasket-Carburetor				
7	12 265 04	1	Deflector-Heat				
8	47 154 01	1	Clip-Cable				
9	12 313 01	1	Grommet				
*	12 757 02	1	Kit-Float				
*	12 757 08	1	Kit-Choke Repair				
*	12 757 03	1	Kit-Carburetor Repair				

PROTOTYPE

\* Not illustrated  
Obtain Parts From Kohler

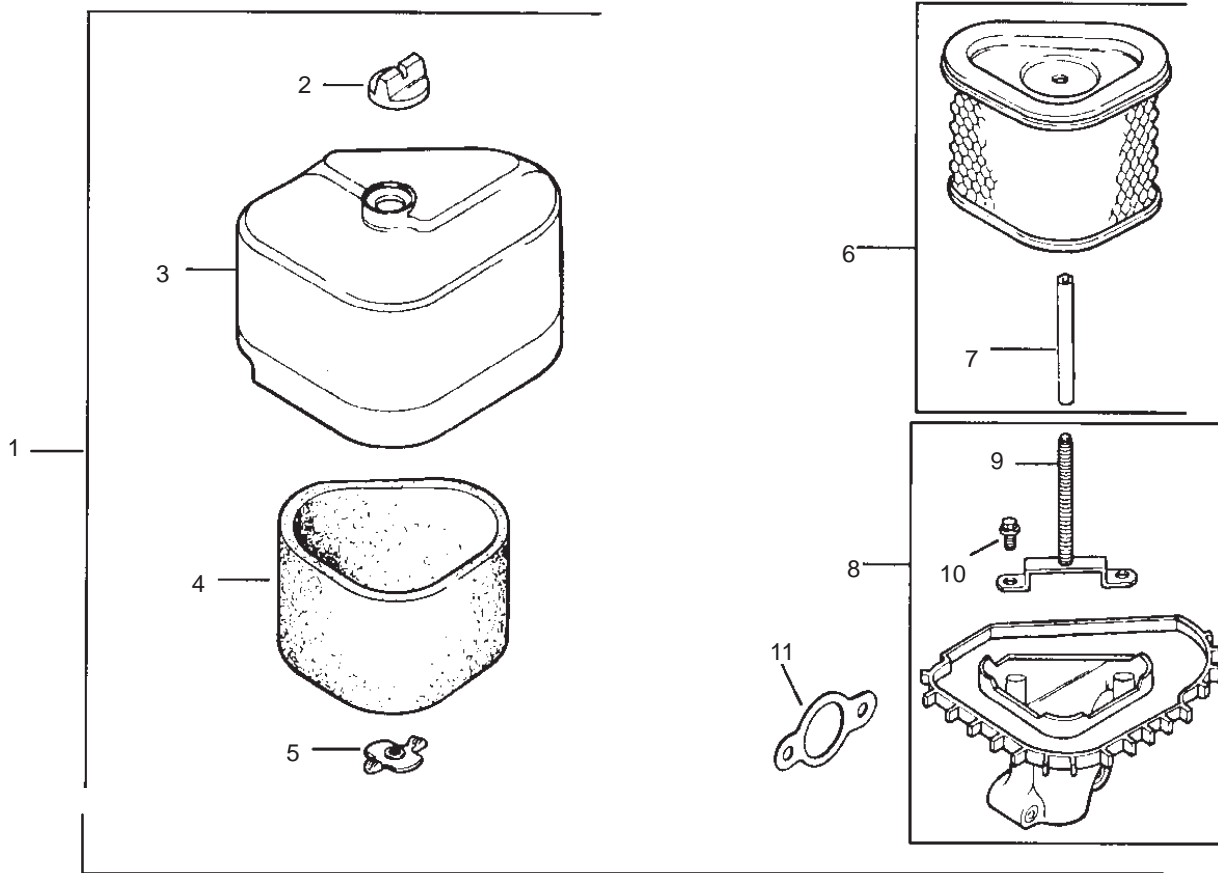


## Engine Control Assembly Kohler CV15T-PS-41560

Ref. No.	Part No.	Qty.	Description
1	12 079 07	1	Linkage-choke
2	12 237 01	1	Clamp-cable
3	M-0664020	2	Screw M6X1.0X20
4	M-0645016	1	Screw-HH M6x1.0x16
5	12 536 01	1	Control-Speed
6	SM-0443025	1	Screw
7	12 089 11	1	Spring
8	12 089 23	1	Spring-choke Return
9	12 089 19	1	Spring-governor
10	12 755 83	1	Kit - Governor Lever (Incl. Ref.#11-13)
11	12 100 07	1	Nut
12	52 211 04	1	Bolt - Round HD
13	12 090 26	1	Lever-governor
14	25 158 08	1	Bushing-linkage
15	12 079 01	1	Linkage-throttle
16	25 158 11	1	Bushing-linkage

Ref. No.	Part No.	Qty.	Description

Obtain Parts From Kohler



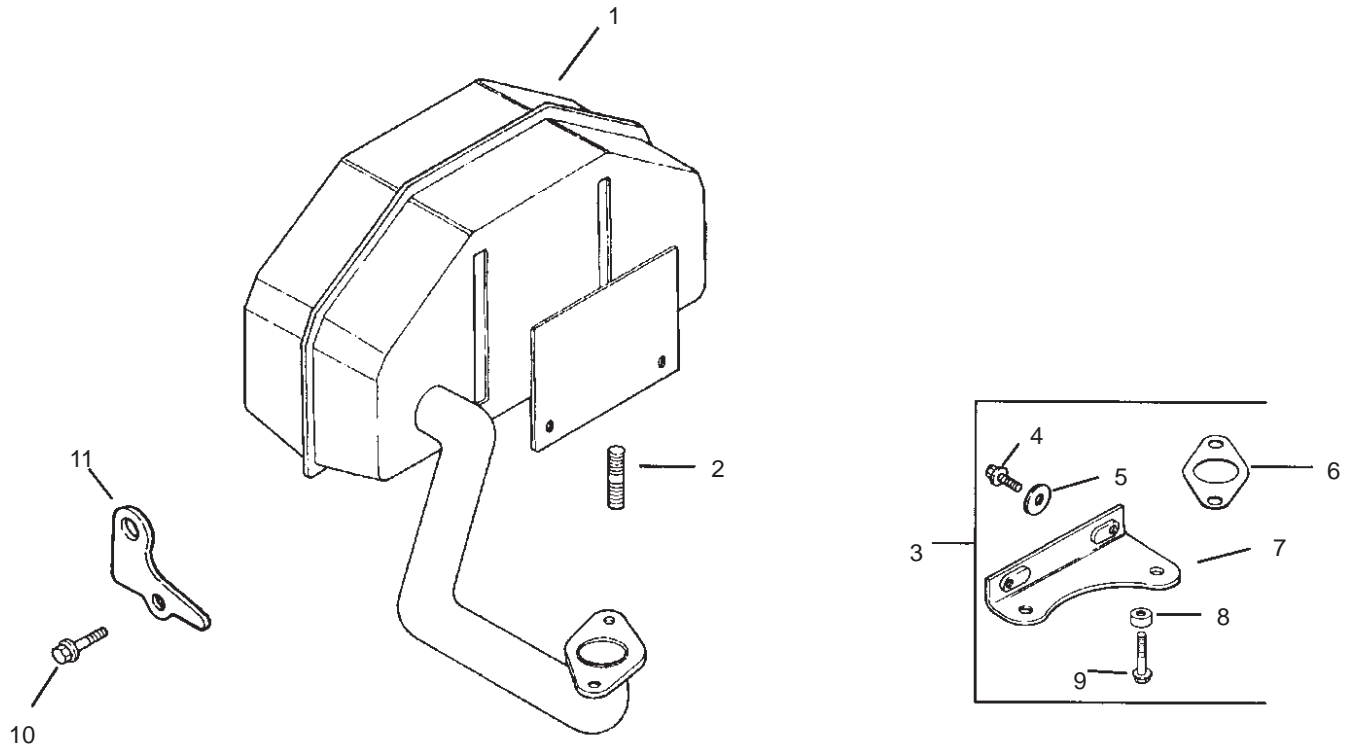
## Air Cleaner Assembly Kohler CV15T-PS-41560

Ref. No.	Part No.	Qty.	Description
1	12 734 02	1	Kit-Air Cleaner (Incl. Ref.# 2-11)
2	25 341 03	1	Knob-Cover
3	12 096 16	1	Cover-Air Cleaner
4	12 083 12	1	Precleaner-Element
5	12 100 01	1	Nut-Wing
6	12 083 10	1	Element-Air Cleaner (Incl. Ref.#7)
7	12 032 11	1	Seal
8	12 094 07	1	Base-Air Cleaner (Incl. Ref.#9, 10)
9	12 072 04	1	Stud-Mounting Plate
10	12 086 01	1	Screw-Mounting Plate
11	12 041 02	1	Gasket-Air Cleaner
*	12 113 04	1	Decal-Air Cleaner

Ref. No.	Part No.	Qty.	Description

PROTOTYPE

\* Not illustrated  
Obtain Parts From Kohler



## Exhaust Assembly Kohler CV15T-PS-41560

Ref. No.	Part No.	Qty.	Description	Ref. No.	Part No.	Qty.	Description
1	12 068 03	1	Muffler				
2	M-0829033	2	Stud M8x1.25x20				
3	12 755 30	1	Kit-Bracket (Incl. Ref.#4-9)				
4	M-0650012	2	Screw				
5	X-25-52	2	Washer				
6	12 041 03	1	Gasket - Exhaust				
7	12 126 55	1	Bracket-Muffler				
8	12 468 01	1	Washer				
9	12 086 13	1	Screw				
10	M-0645025	1	Screw				
11	12 445 06	1	Strap-Lifting				

Obtain Parts From Kohler



*PROTOTYPE*