



Mid-Size Mower

ProLine Gear 13HP with 32in Side Discharge Mower

Model No. 30252—220000001 and Up

Parts Catalog

Ordering Replacement Parts

To order replacement parts, please supply: the part number, the quantity, and the description of each part desired.

Understanding Reference Numbers

Each identified part in an illustration has a reference number. The reference number for a part also appears in the parts list, along with other information about the part.

This catalog uses two special reference number formats, one to indicate parts in a service assembly and another to indicate the quantity of a given part in an illustration.

Service Assembly Reference Numbers

Parts in service assemblies have reference numbers in the form **a:b**. The **a** represents the reference number of the entire service assembly and the **b** represents a sequential number unique to each part within the service assembly.

For example, a wheel assembly might be identified by reference number **6**, the tire by **6:1**, the valve by **6:2**, and the wheel by **6:3**. When you order the assembly identified by reference number **6**, you receive all parts identified by reference numbers **6:1**, **6:2**, and **6:3**. However, you may also order any part individually.

Reference numbers of this type appear in illustrations and in part lists.

Reference Numbers Indicating Quantity

In an illustration, if a reference number indicates more than one part, the reference number has the form **nX y**. The **n** represents the quantity of the part, the **X** is the multiplication symbol, and the **y** represents the reference number.

For example, in an illustration, the reference number **2X 37** means that two of the parts identified by reference number **37** are indicated.

Contents

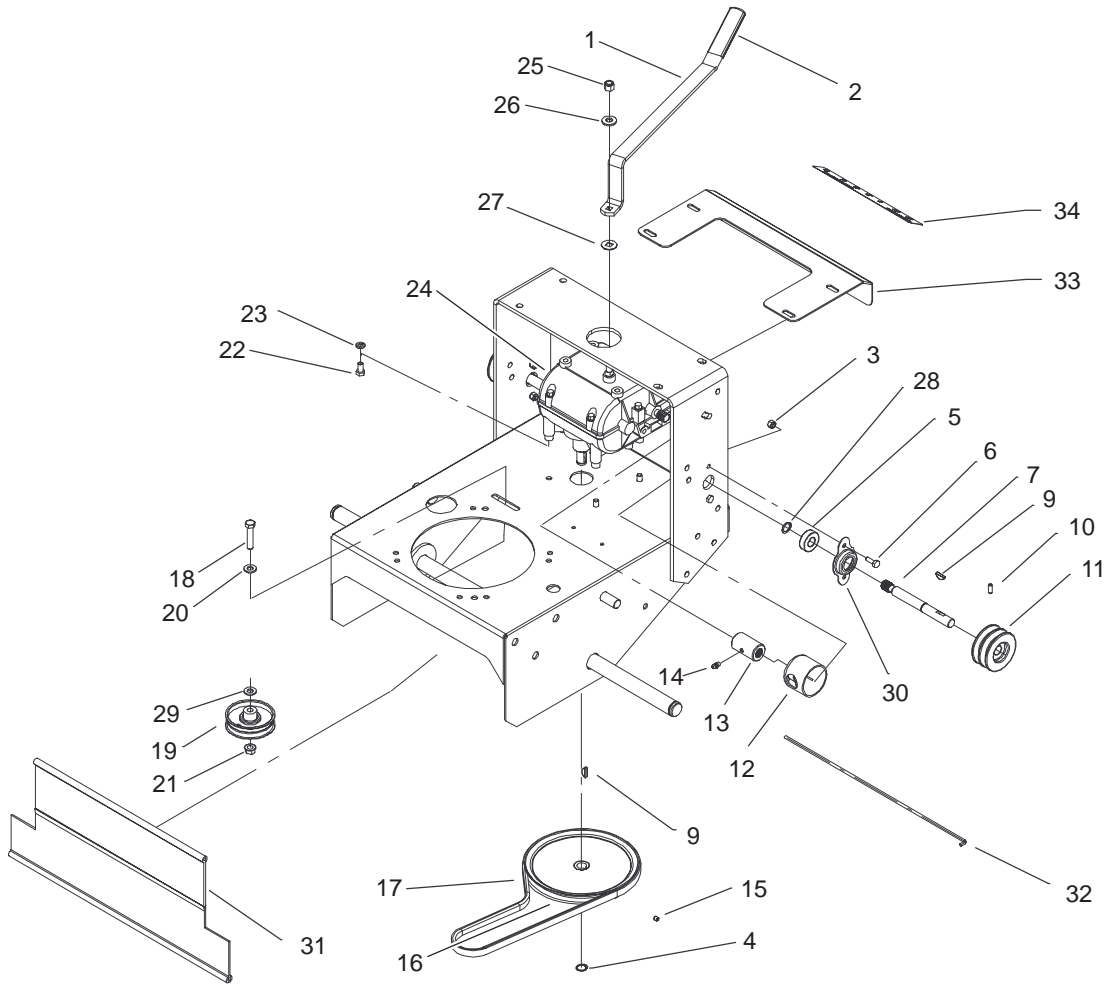
Description	Page	Description	Page
Fuel Tank and Idler Bracket Assembly	3	Oil Pan / Lubrication (Kohler CV13T-PS-21524)	14
Transmission and Idler Pulley Assembly	4	Cylinder Head, Valves And Breather (Kohler CV13T-PS-21524) . .	15
Brake, Wheel Pulley and Wheel Assembly	5	Ignition / Electrical (Kohler CV13T-PS-21524)	16
Handle and Control Panel Assembly	6	Blower Housing And Baffles (Kohler CV13T-PS-21524)	17
Engine Assembly	7	Starter System (Kohler CV13T-PS-21524) . .	18
Clutch/Brake Assembly No. 54-3200	8	Fuel System (Kohler CV13T-PS-21524)	19
Carrier Frame Assembly	9	Engine Controls (Kohler CV13T-PS-21524) . .	20
Deck Assembly	10	Air Cleaner (Kohler CV13T-PS-21524)	21
Spindle Assembly	11	Exhaust (Kohler CV13T-PS-21524)	22
Decal and Mulcher Cover Assembly	12		
Crankcase (Kohler CV13T-PS-21524)	13		

Part Description Abbreviations

Part descriptions in this catalog may include the following abbreviations.

Abbreviation	Meaning	Abbreviation	Meaning
AR	as required	HYD	hydraulic
ASM	assembly	INC	incorporated
CARR	carriage	LH	left hand
DEG	degrees	NI	nylon insert
FH	flat head	PPH	Phillips pan head
GA	gauge	PTH	Phillips truss head
HF	hex flange	PTO	power take off
HH	hex head	RH	right hand
HHF	hex head flange	SFH	slotted fillister head
HLH	hex lag head	SHH	slotted hex head
HJ	hex jam	SQH	square head
HOC	height-of-cut	SHWH	slotted hex washer head
HS	hex socket	SPH	slotted pan head
HSBH	hex socket button head	SRH	slotted round head
HSFH	hex socket flat head	STD	standard
HSH	hex socket head	TAP	self tapping
HWH	hex washer head	TTH	Torx truss head
HWHTF	hex washer head thread forming	WH	wing head

PROTOTYPE

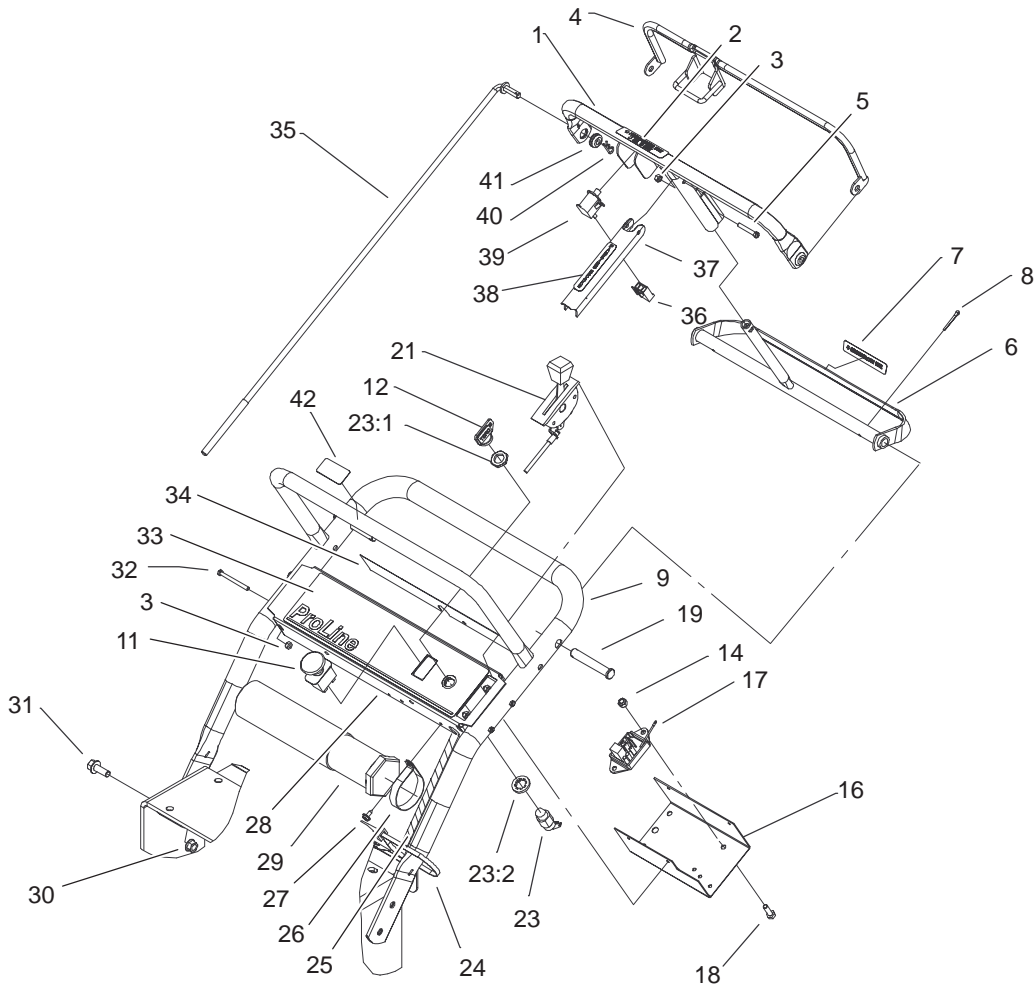


Sheet No.:3

Transmission and Idler Pulley Assembly

Ref. No.	Part No.	Qty.	Description
1	98-3274-03	1	Lever-Shift
2	47-1970	1	Grip
3	3296-42	4	Nut-Lock, NI
4	32120-64	1	Ring-Snap, External
5	1-323252	2	Bearing-Shaft
6	321-4	4	Screw-HH
7	104-1102	2	Shaft-Output
9	3257-5	3	Key-Woodruff
10	3245-3	2	Screw-Set, HS
11	105-0828	2	Pulley-Transmission
12	51-4220	2	Guard-Coupler
13	98-0789	2	Coupler
14	302-5	2	Fitting-Grease
15	3245-1	1	Screw-Set, HSH
16	51-4190	1	Pulley-Driven
17	26-9671	1	V-Belt
18	323-9	1	Screw-HH
19	51-4810	1	Pulley-Idler
20	3256-24	1	Washer-Flat
21	32128-21	1	Nut-HF
22	322-2	4	Screw-HH
23	3253-4	4	Washer-Lock
24	1-323500	1	Transmission
25	3296-6	1	Nut-Lock, NI
26	98-5975	1	Washer-Belleville
27	1-323379	1	Washer-Lever, Shifter

Ref. No.	Part No.	Qty.	Description
28	32151-62	2	Ring-Retaining
29	3256-24	1	Washer-Flat
30	1-323254	2	Flange-Output
31	95-1526	1	Shield-Trailing
32	95-1529	1	Rod-Shield
33	104-8102-01	1	Plate-Gate, Shift
34	98-3256	1	Decal-Speed, Ground

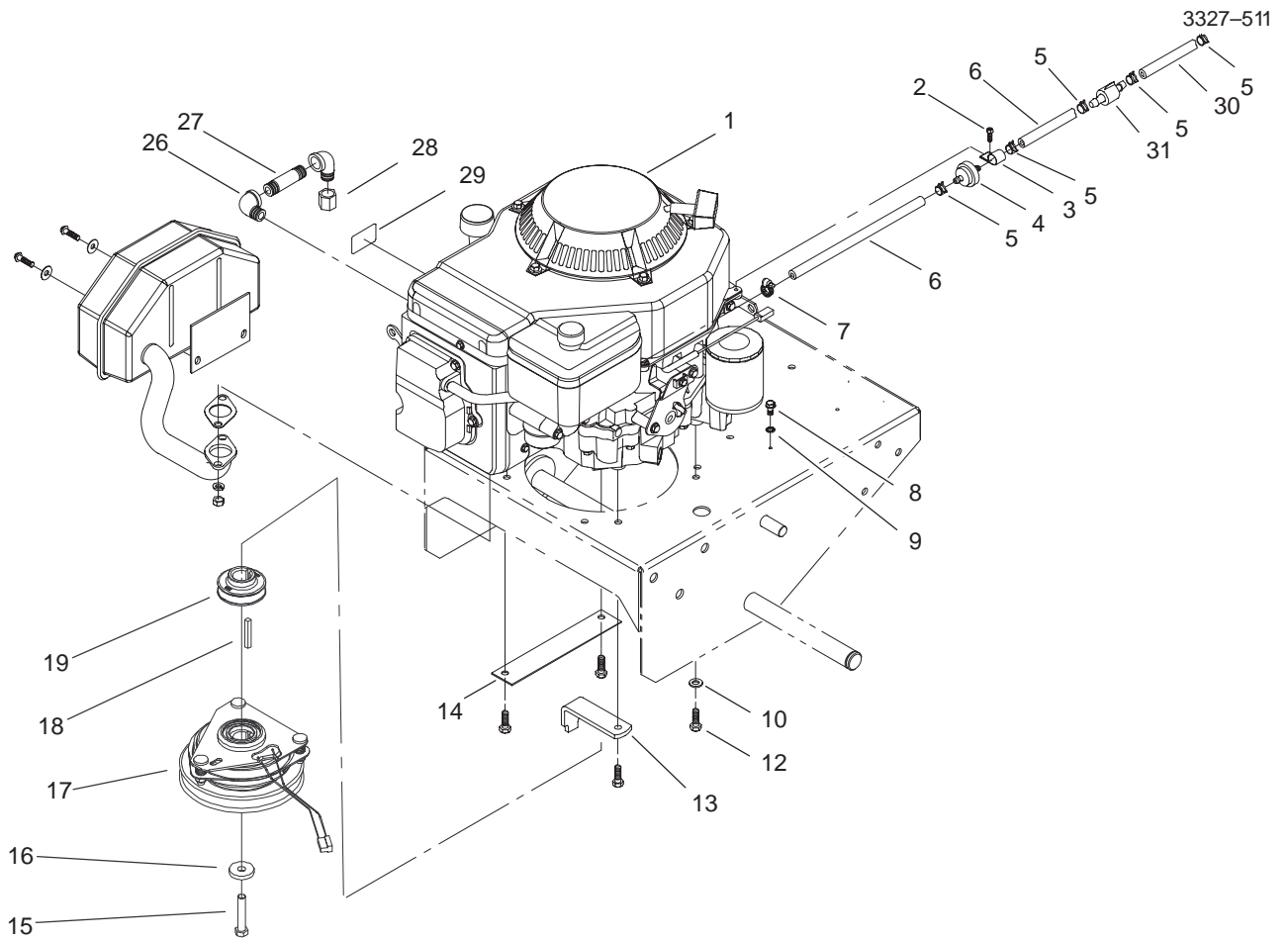


Sheet No.:5

Handle and Control Panel Assembly

Ref. No.	Part No.	Qty.	Description
1	82-7690-03	1	Bar-Control
2	82-2290	1	Decal-Bar, Control
3	3296-2	5	Nut-Lock
4	82-7680-03	1	Bail
5	32105-1	1	Screw-SHH
6	99-8501-03	1	Control-Pivot
7	82-2280	1	Decal-Handle, Reverse
8	3272-11	2	Pin-Cotter
9	67-6440-03	1	Handle-Upper
11	104-8140	1	Switch-PTO
12	63-8360	2	Key-Ignition
14	3296-42	1	Nut-Lock, NI
16	93-1187-03	1	Panel-Bottom
17	104-8141	1	Module-Delay
18	321-2	1	Screw-HH
19	283-55	2	Pin-Clevis
21	74-0630	1	Control-Throttle
23	29-5560	1	Switch-On/Off
23:1	218-461	1	Nut-HH
23:2	3254-5	1	Washer-Lock, Internal
24	3290-378	2	Tie-Cable
25	104-8136	1	Harness-Wire
26	2412-120	2	R-Clamp
27	32104-76	4	Screw
28	104-8177-03	1	Panel-Control

Ref. No.	Part No.	Qty.	Description
29	74-0720	1	Tube-Manual
30	32128-21	4	Nut-HF
31	3234-11	4	Screw-HHF
32	32105-14	4	Screw
33	104-8180	1	Decal-Panel, Control
34	105-0884	1	Decal-Danger
35	82-7632	2	Rod-Control
36	218-595	1	Connector-Body
37	51-4850-03	1	Lever-Brake, Parking
38	52-2010	1	Decal-Lever, Parking
39	82-2190	1	Switch-Bail
40	3290-307	2	Pin-Hair
41	237-141	2	Grommet-Rubber
42	98-4387	1	Decal-Protection, Ear

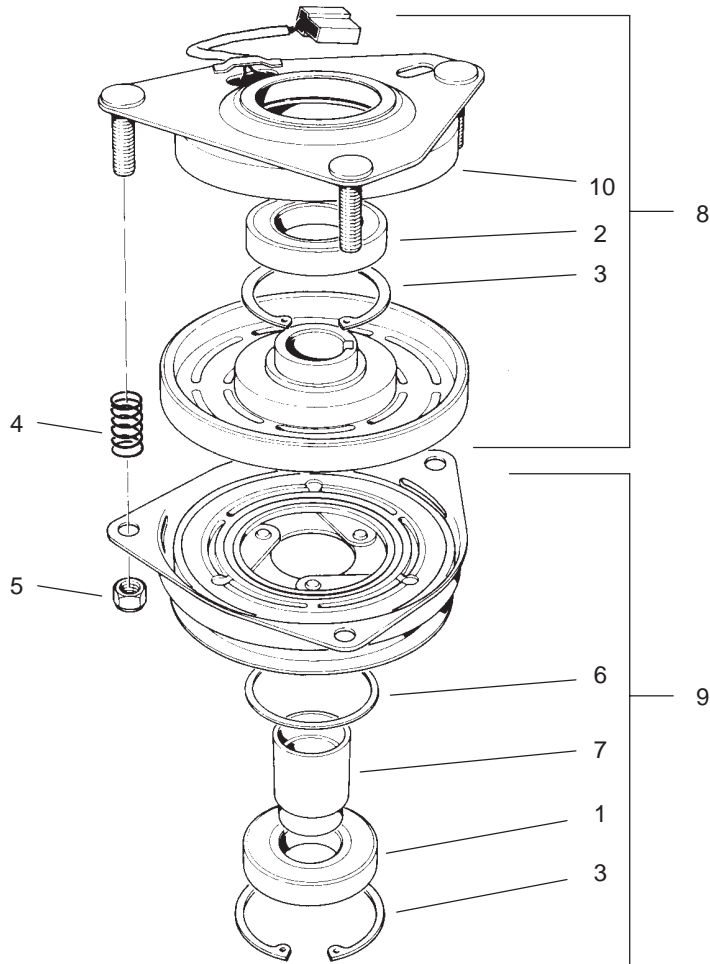


Sheet No.:6

Engine Assembly

Ref. No.	Part No.	Qty.	Description	Ref. No.	Part No.	Qty.	Description
☆1		1	Engine-Kohler, Cv13t-Ps-21524				
2	32144-19	1	Screw-Forming, Thread				
3	2412-87	1	Clamp-Cable				
4	56-6360	1	Filter-Fuel				
5	2412-98	5	Clamp				
6	47-2982	2	Hose-Fuel				
7	2412-108	1	Clamp-Worm				
8	12-3270	1	Screw				
9	3255-7	1	Washer-Lock/Ext				
10	3256-23	1	Washer-Flat				
12	33114-025	4	Screw-HH				
13	51-4540-03	1	Retainer-Clutch				
14	74-0930-01	1	Guard-Pulley				
15	3212-9	1	Screw-HH				
16	112843	1	Washer				
17	54-3200	1	Clutch/Brake ASM				
18	608006	1	Key				
19	105-0827	1	Pulley-Drive				
26	74-0950	2	Elbow-Street, 90°				
27	289-20	1	Nipple-Pipe				
28	288-4	1	Cap-Pipe				
29	63-8440	1	Decal-Surface, Hot				
30	47-2966	1	Hose-Fuel				
31	1-603770	1	Valve-Fuel				

☆ Not serviced separately

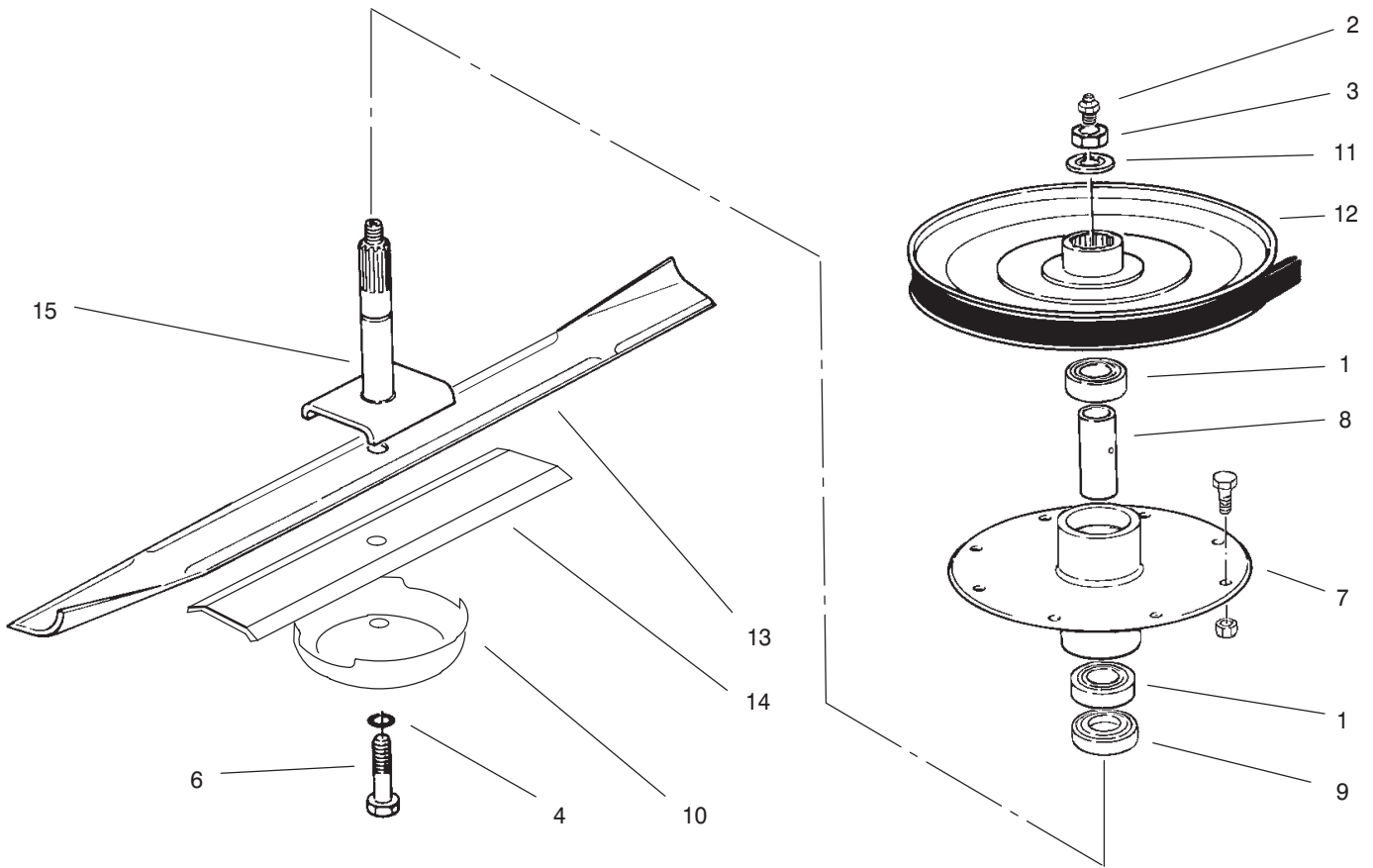


Sheet No.:A1
T-3726

Clutch/Brake Assembly No. 54-3200

Ref. No.	Part No.	Qty.	Description	Ref. No.	Part No.	Qty.	Description
1	251-291	1	Bearing-Pulley				
2	251-292	1	Bearing-Field				
3	44-8310	2	Ring-Retaining				
4	44-8320	3	Spring				
5	3296-6	3	Nut-Lock, NI				
6	44-8330	1	Spacer-Bearing, Pulley				
7	44-8340	1	Collar-Bearing				
8	44-8360	1	Field Coil-Rotor, Bearing ASM				
9	44-8370	1	Armature Pulley Bearing ASM				
10	54-0230	1	Field Bearing ASM				

PROTOTYPE

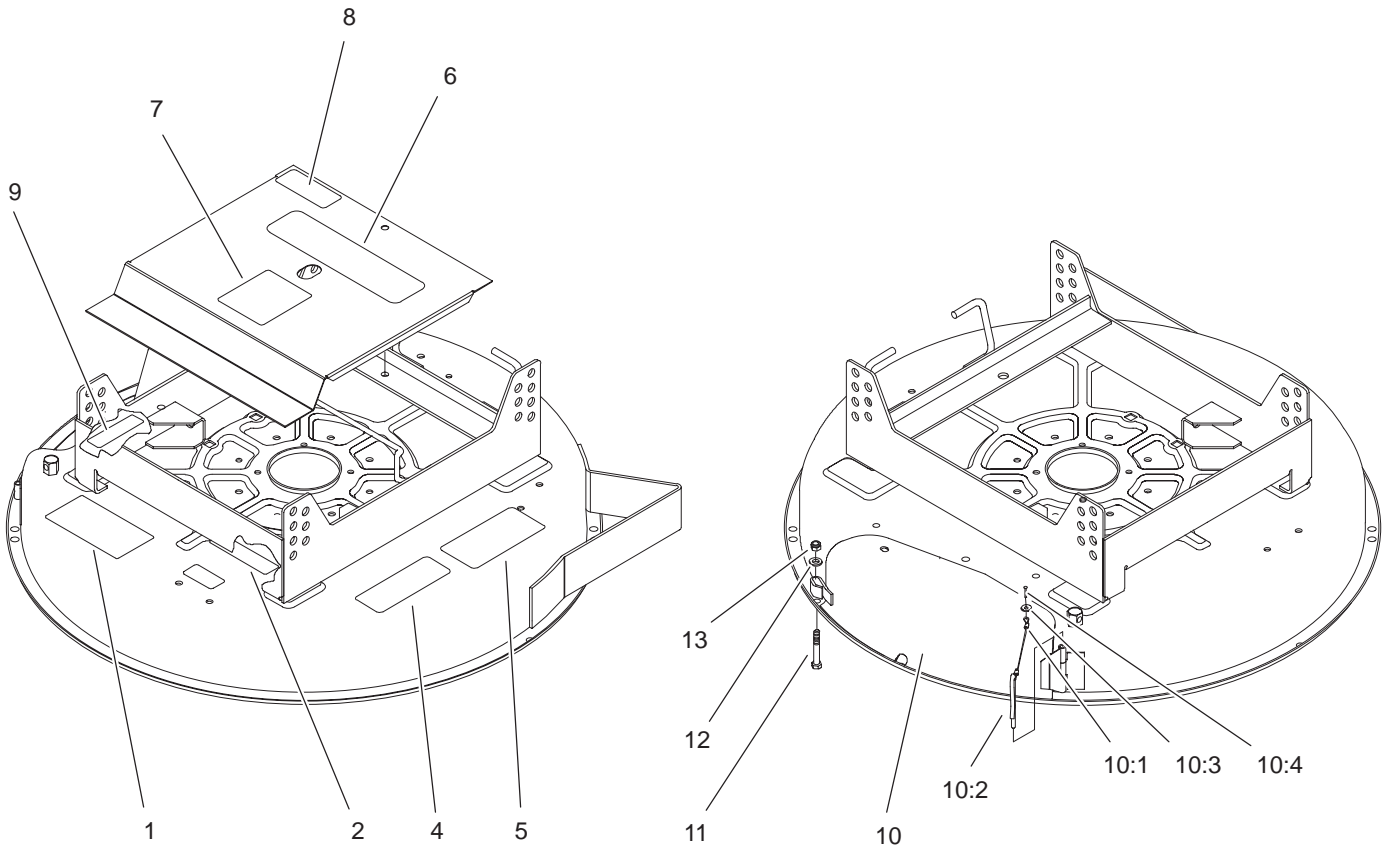


Sheet No.:A2
T-3739

Spindle Assembly

Ref. No.	Part No.	Qty.	Description
1	251-257	2	Bearing
2	302-2	1	Fitting-Grease
3	32146-20	1	Nut-Jam
4	3253-23	1	Washer-Lock/Sp
6	51-4060	1	Screw-Blade
7	67-6060	1	Housing-Spindle
8	67-6070	1	Spacer-Bearing
9	67-6080	1	Spacer
10	7-3522	1	Cup-Anti-Scalp
11	7-4150	1	Washer-Pinion
12	74-0580	1	Pulley ASM
13	80-4430	1	Blade-Recycler
14	82-4750	1	Spacer-Blade
15	92-5763	1	Shaft-Spindle

Ref. No.	Part No.	Qty.	Description
PROTOTYPE			



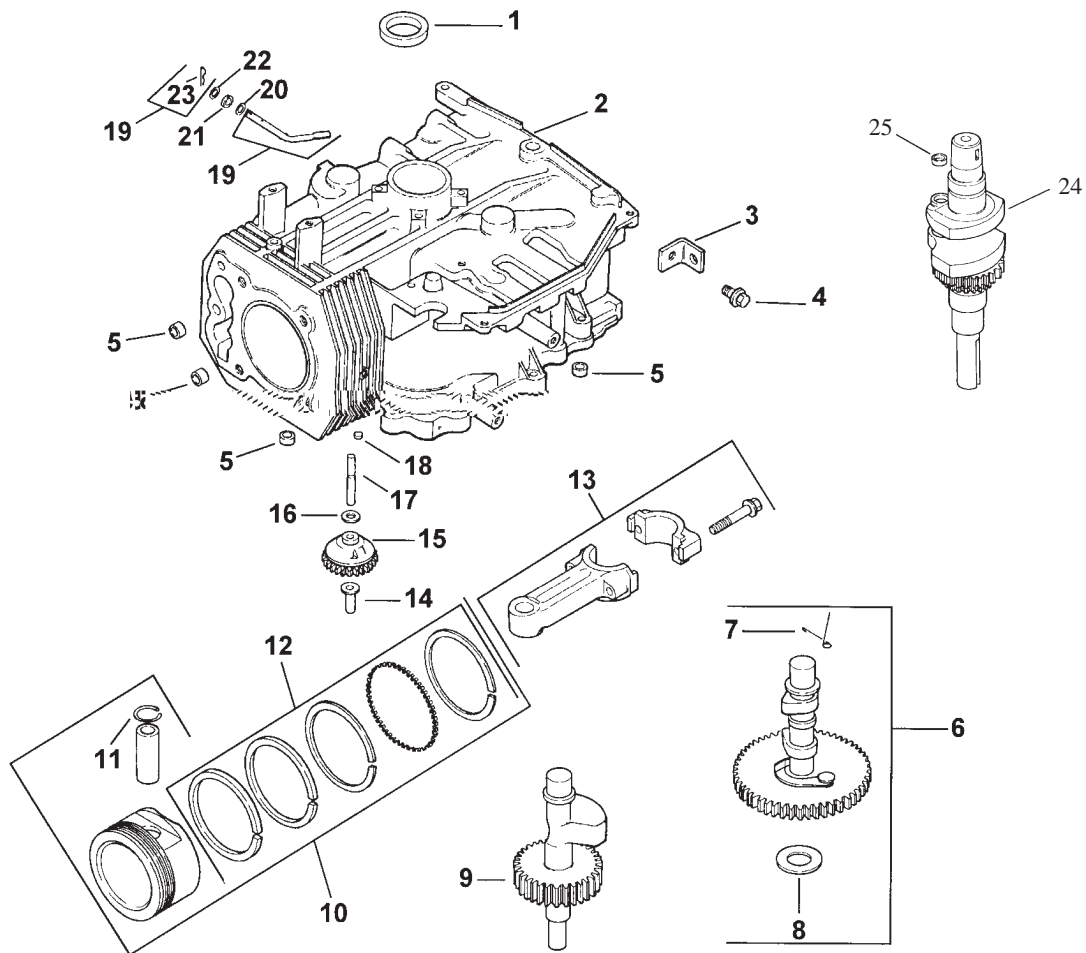
Sheet No.:9

Decal and Mulcher Cover Assembly

Ref. No.	Part No.	Qty.	Description
1	66-1340	1	Decal-Danger
2	67-5360	1	Decal-Danger
4	68-8340	1	Decal-Torque
5	93-1159	1	Decal-HOC
6	74-2080	1	Decal-Proline
7	67-6170	1	Decal
8	54-0910	1	Decal-Hot
9	66-6380	1	Decal-Danger
10	92-5422	1	Mulcher Cover ASM
10:1	28-8070	1	Lanyard
10:2	28-8130	1	Pin-Locking, Chute
10:3	3256-49	1	Washer-Flat
10:4	3290-282	1	Rivet-Pop, Steel
11	322-11	1	Screw-HH
12	3256-23	2	Washer-Flat
13	3296-29	1	Nut-Lock, NI

Ref. No.	Part No.	Qty.	Description

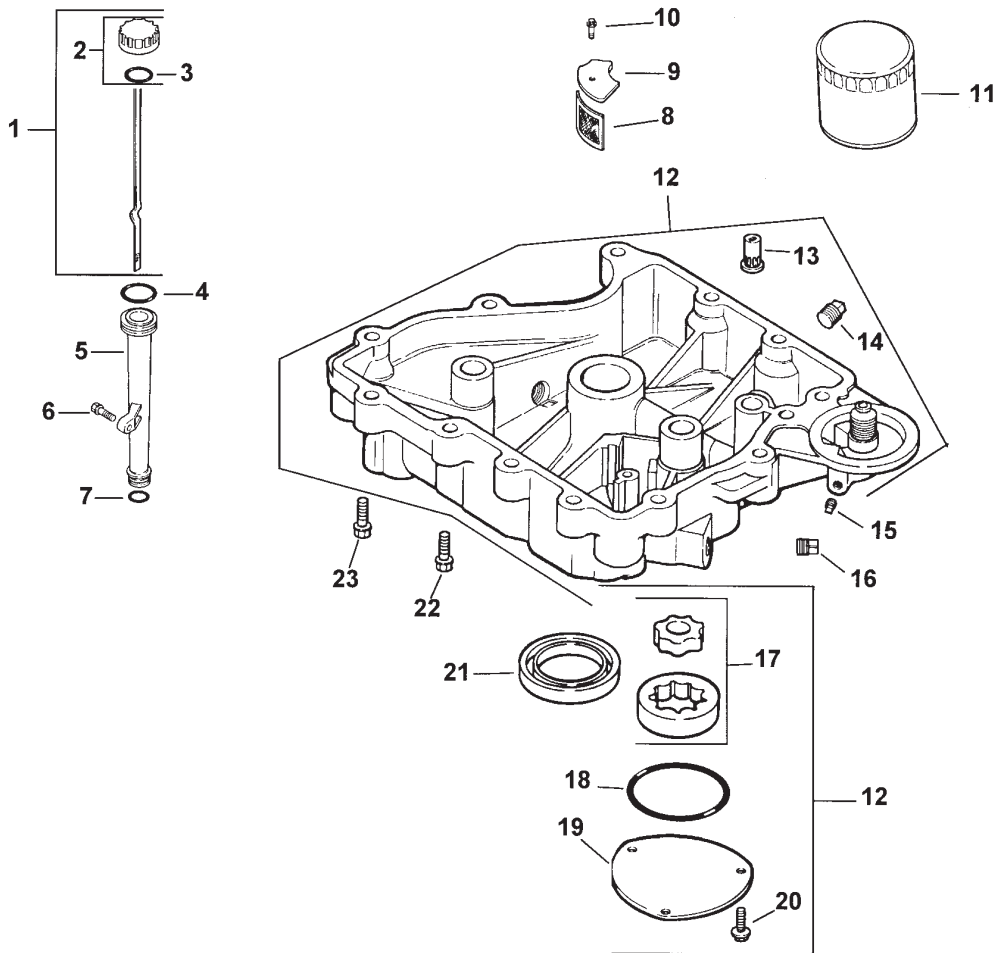
PROTOTYPE



Crankcase Assembly (Kohler CV13T-PS-21524)

Ref. No.	Part No.	Qty.	Description	Ref. No.	Part No.	Qty.	Description
1	12 032 03	1	Seal-Crankshaft	14	12 380 01	1	Pin-Governor Regulating
2	12 522 33	1	Shortblock	15	12 043 05	1	Gear-Governor ASM
3	12 445 02	1	Strap-Lifting	16	M-0631005	1	Washer-Governor
4	M-0839025	1	Screw M8x1.25x22	17	12 144 02	1	Shaft-Governor Gear
5	12 380 17	4	Dowel-Locating	18	52 139 09	1	Plug-Cup
6	12 755 49	1	Kit-Camshaft INC 7-8	19	12 755 64	1	Kit - Shaft-Governor Cross (Incl. Ref.#23)
7	12 089 31	1	Spring-Actuating	20	X-25-102	1	Washer-Flat
8	12 422 07	A/R	Shim-Camshaft A/R	21	12 032 01	1	Seal-Governor Shaft
8	12 422 08	1	Shim-Camshaft A/R	22	M-0631015	1	Washer-Governor Shaft
8	12 422 09	A/R	Shim-Camshaft A/R	23	12 154 05	1	Clip - Hitch Pin
8	12 422 10	A/R	Shim-Camshaft A/R	24	12 014 30	1	Crankshaft ASM
8	12 422 11	A/R	Shim-Camshaft A/R	25	12 139 01	1	Plug-Cup
8	12 422 12	A/R	Shim-Camshaft A/R	*	12 030 02	1	Bearing - Crankshaft 0.25
8	12 422 13	A/R	Shim-Camshaft A/R	*	12 030 03	1	Bearing - Crankshaft 0.50
9	12 144 27	1	Shaft-Balance	*	12 755 83	1	Set - Gasket
10	12 847 01	1	Set Piston w/Ring STD				
10	12 847 02	1	Set-Piston w/Ring .25				
10	12 847 03	1	Set-Piston w/Ring .50				
11	12 018 02	2	Retainer-Piston Pin				
12	12 108 01	1	Ring Set STD				
12	12 108 02	1	Ring Set .25				
12	12 108 03	1	Ring Set .50				
13	12 067 05	1	Rod Connecting STD				
13	12 067 06	1	Rod Connecting .25				

* Not Illustrated
Obtain parts from Kohler



Oil Pan / Lubrication (Kohler CV13T-PS-21524)

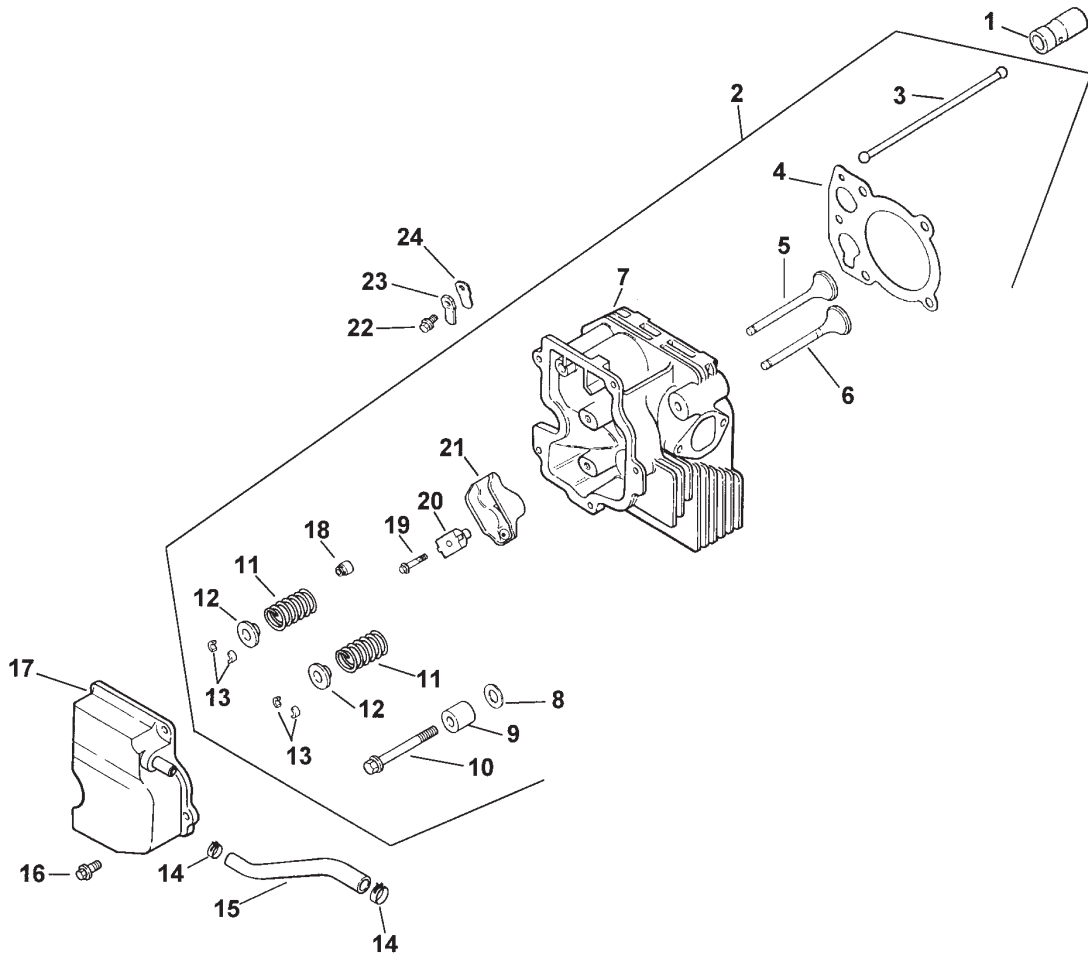
Ref. No.	Part No.	Qty.	Description
1	12 038 01	1	Dipstick INC 2-3
2	25 755 13	1	Kit-Oil Cap INC 3
3	12 153 03	1	O Ring-Fill Cap
4	12 153 02	1	O Ring-Upper Fill Tube
5	12 123 04	1	Tube-Oil Fill
6	M-0545020	1	Screw M5x0.8x20
7	12 153 01	2	O Ring-Lower Fill Tube
8	25 162 07	1	Screen-Oil
9	12 096 03	1	Cover-Oil Pickup Screen
10	M-0545016	1	Screw M5x0.8x16
11	52 050 02	1	Filter-Oil
12	12 755 45	1	Pan - Oil (Incl. Ref. #13, 14, 17-20)
13	25 462 09	1	Valve - Oil Pressure
14	X-75-2	2	Plug-1/4nptf
15	X-75-1	2	Plug-1/8nptf
16	X-75-10	2	Plug-SH 3/8 NPTF
17	12 393 01	1	Pump-Oil
18	12 153 06	1	O Ring-Oil Pump Cover
19	12 096 34	1	Cover-Oil Pump
20	M-0545016	3	Screw M5x0.8x16
21	12 032 03	1	Seal-Crankshaft

Ref. No.	Part No.	Qty.	Description
22	24 086 16	11	Screw-M8X1.25X45
23	24 068 17	1	Screw-M5X1.25X45

PROTOTYPE

*Not illustrated

Obtain parts from Kohler

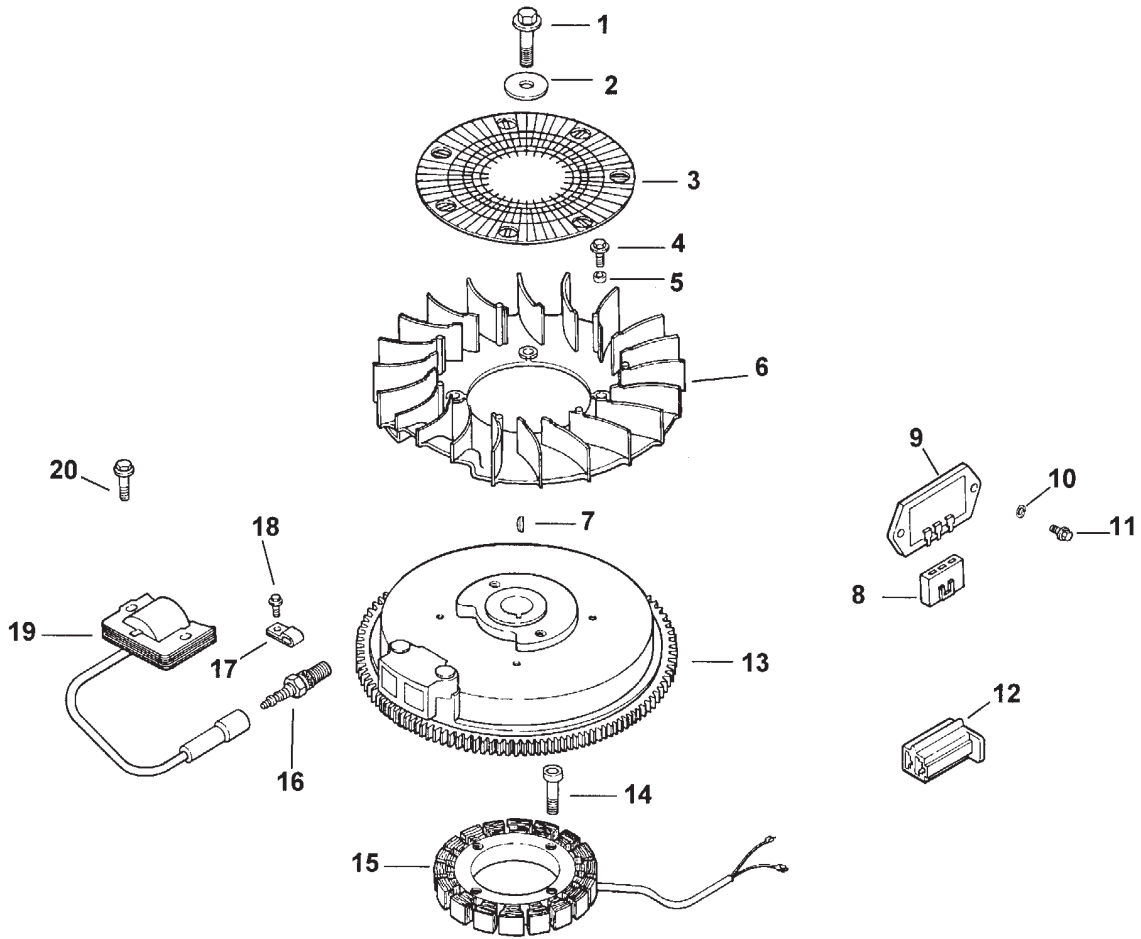


Cylinder Head, Valves And Breather (Kohler CV13T-PS-21524)

Ref. No.	Part No.	Qty.	Description	Ref. No.	Part No.	Qty.	Description
1	12 351 02	2	Lifter-Valve	22	M-0545010	1	Screw M5x0.8x10
2	12 755 81	1	Kit-Cylinder Head	23	12 018 01	1	Retainer-Breather
3	12 411 01	2	Rod-Push	24	12 402 02	1	Reed-Breather
4	12 041 08	1	Gasket-Cylinder Head				
5	12 017 01	1	Valve-Intake STD				
5	12 017 02	1	Valve-Intake .25				
6	12 016 01	1	Valve-Exhaust STD				
6	12 016 02	1	Valve-Exhaust .25				
7	12 318 19	1	Head - Cylinder				
8	12 468 05	1	Washer-Flat				
9	12 112 13	1	Spacer-Head Bolt Exhaust				
10	12 086 15	5	Screw M10x1.5x80				
11	12 089 01	1	Spring-Valve				
12	12 173 01	2	Cap-Valve Spring				
13	12 755 03	2	Kit-Retainer				
14	X-426-9	2	Clamp-Hose				
15	12 326 03	1	Hose-Breather				
16	M-0645020	3	Screw-HH M6x1.0x20				
17	12 096 07	1	Cover-Valve w/Nipple				
18	24 023 05	1	Seal-Valve Spring				
19	M-0640034	2	Screw M6x1.0x34				
20	12 599 03	2	Pivot - Rocker Arm				
21	25 186 01	2	Arm-Rocker				

*Not illustrated

Obtain parts from Kohler



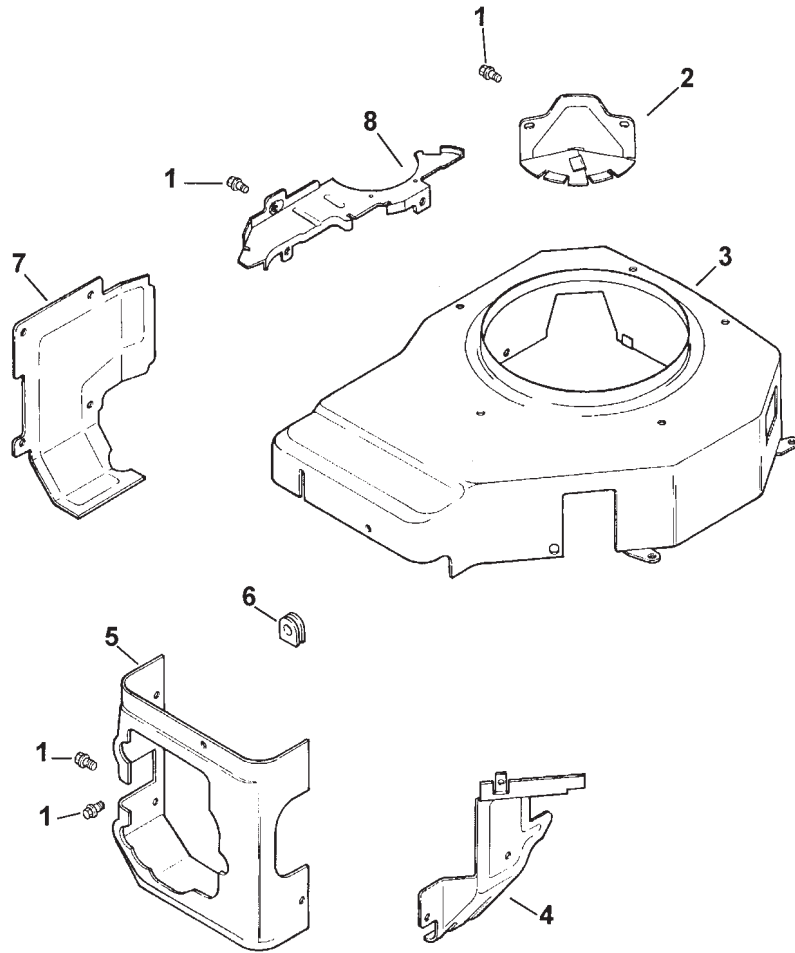
Ignition / Electrical (Kohler CV13T-PS-21524)

Ref. No.	Part No.	Qty.	Description
1	12 086 14	1	Screw-Flywheel Mounting
2	12 486 03	1	Washer-Flat
3	12 162 03	1	Screen-Grass
4	M-0639016	4	Screw M6x1.0x16
5	12 112 01	4	Spacer-Fan
6	12 157 02	1	Fan
7	X-42-15	1	Key
8	236602	1	Connector-Regulator
9	12 403 01	1	Rectifier-Unregulated
10	X-22-11	2	Washer - Lock
11	M-0639016	2	Screw M6x1.0x16
12	41 155 03	1	Connector
13	12 025 15	1	Flywheel ASM
14	M-0548025	4	Screw M5x0.8x25
15	54 755 09	1	Kit - Stator-15 Amp (Incl. Bracket P/N #24 126 71)
16	12 132 02	1	Spark Plug
17	X-728-1	2	Clip-Kill Lead
18	M-0545010	1	Screw M5x0.8x10
19	12 584 02	1	Module-Ignition
20	M-0545020	2	Screw M5x0.8x20
*	X-25-5	1	Washer
*	12 518 01	1	Lead-White
*	25 518 05	1	Lead-Black

Ref. No.	Part No.	Qty.	Description
*	25 518 29	1	Lead-Black
*	24 126 71	1	Bracket - Stator Wire

PROTOTYPE

* Not illustrated
Obtain parts from Kohler

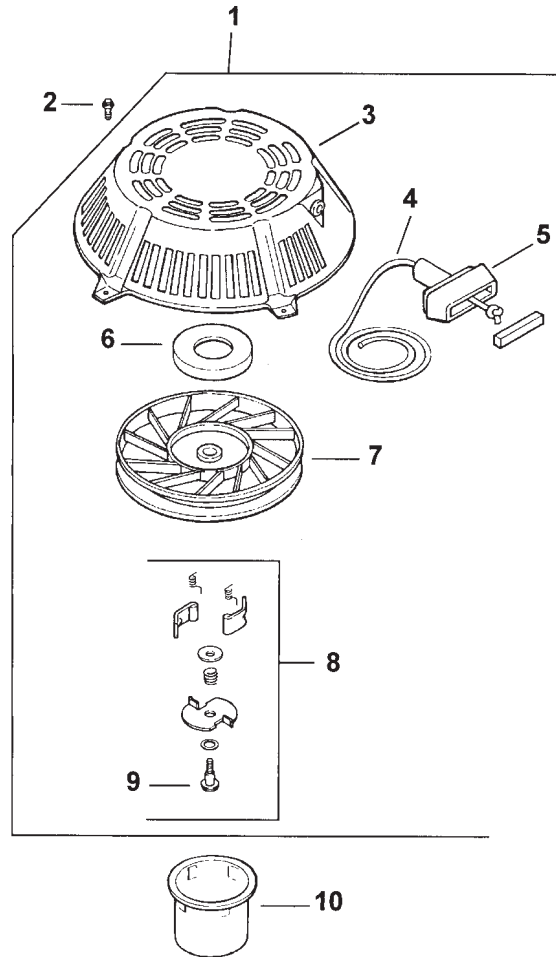


Blower Housing And Baffles (Kohler CV13T-PS-21524)

Ref. No.	Part No.	Qty.	Description	Ref. No.	Part No.	Qty.	Description
1	M-0545010	15	Screw M5x0.8x10				
2	12 096 29	1	Cover-Starter				
3	12 027 37	1	Housing-Blower				
4	12 063 05	1	Baffle-Carburetor				
5	12 063 08	1	Baffle-Cyl. Head				
6	12 313 03	1	Grommet-Blower				
7	12 063 01	1	Baffle-Cylinder				
8	12 146 07	1	Plate-Blower Housing				
*	12 133 66	1	Decal-Horsepower				

PROTOTYPE

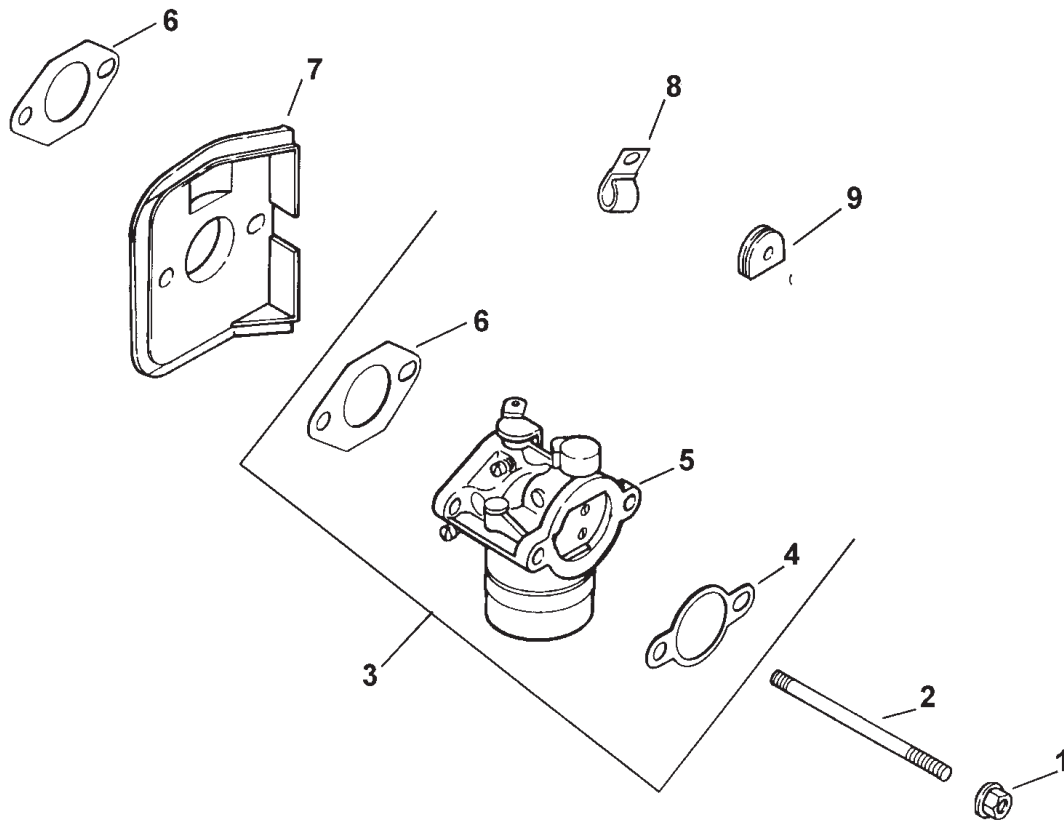
* Not illustrated
 Obtain parts from Kohler



Starter System (Kohler CV13T-PS-21524)

Ref. No.	Part No.	Qty.	Description	Ref. No.	Part No.	Qty.	Description
1	12 165 01	1	Starter Incl 3-9				
2	M-0545010	5	Screw M5x0.8x10				
3	12 081 01	1	Housing-Starter				
4	12 160 01	1	Rope-Starter				
5	25 166 01	1	Handle-Recoil				
6	12 089 06	1	Spring & Keeper				
7	12 093 01	1	Pulley				
8	12 757 06	1	Kit-Dog Replacement (incl. Ref.#9)				
9	41 086 09	1	Screw-Posidrive				
10	15 109 01	1	Cup-Driver				
*	12 113 07	1	Decal-Starting				

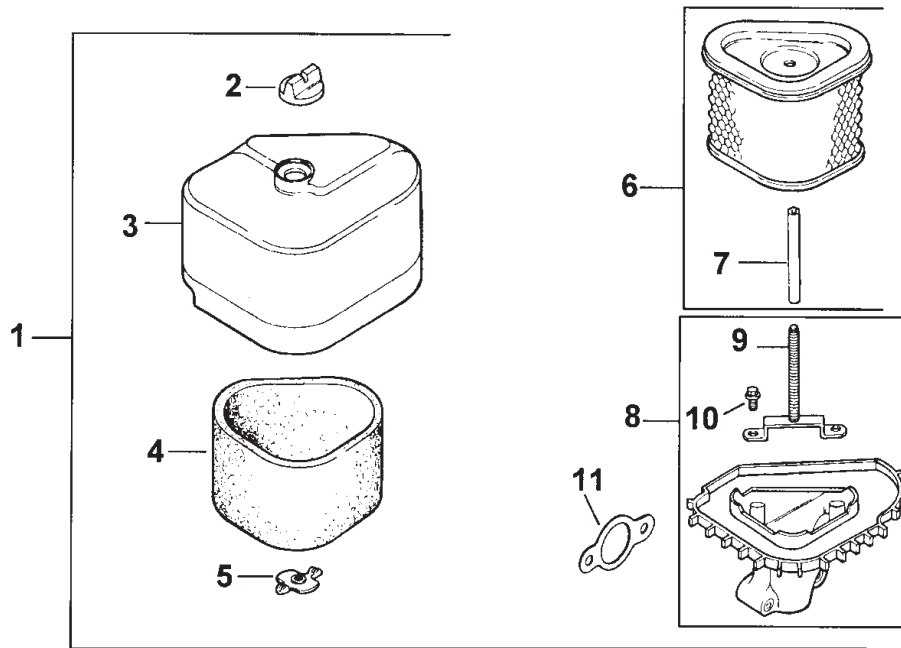
* Not illustrated
Obtain parts from Kohler



Fuel System (Kohler CV13T-PS-21524)

Ref. No.	Part No.	Qty.	Description	Ref. No.	Part No.	Qty.	Description
1	M-0641060	2	Nut M6x1.0				
2	M-0629122	2	Stud M6x1.0x110				
3	12 853 78	1	Kit-Carburetor w/Gaskets				
4	12 041 02	1	Gasket-Air Cleaner				
5	12 053 78	1	Carburetor ASM				
6	12 041 01	2	Gasket-Carburetor				
7	12 265 04	1	Deflector-Heat				
8	47 154 01	1	Clip-Cable				
9	12 313 01	1	Grommet				
*	12 757 02	1	Kit-Float				
*	12 757 08	1	Kit-Choke Repair				
*	12 757 03	1	Kit-Carburetor Repair				

* Not illustrated
Obtain parts from Kohler

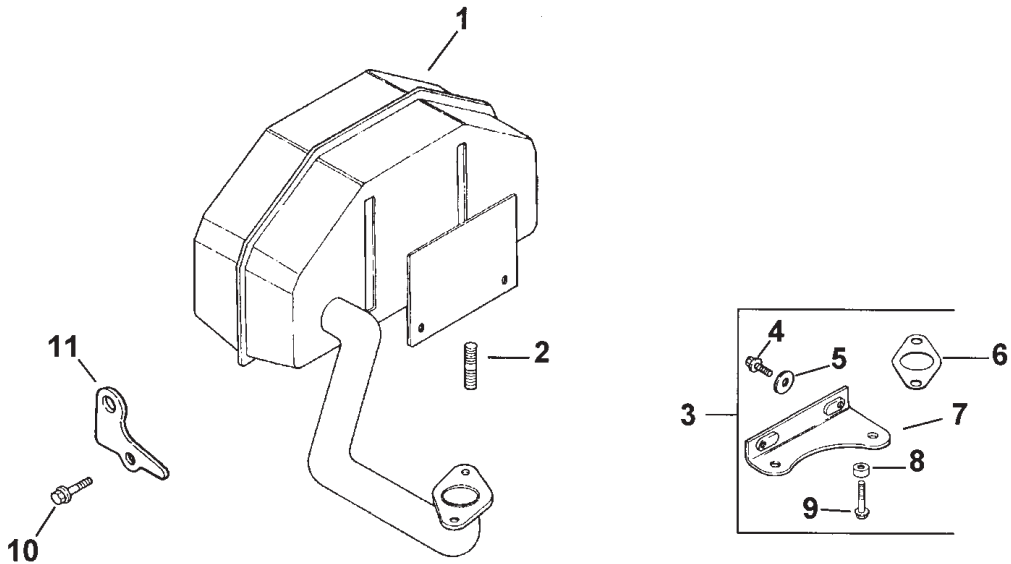


Air Cleaner Assembly (Kohler CV13T-PS-21524)

Ref. No.	Part No.	Qty.	Description
1	12 734 02	1	Kit-Air Cleaner (Incl. Ref.# 2-11)
2	25 341 03	1	Knob-Cover
3	12 096 16	1	Cover-Air Cleaner
4	12 083 12	1	Precleaner-Element
5	12 100 01	1	Nut-Wing
6	12 083 10	1	Element-Air Cleaner (Incl. Ref.#7)
7	12 032 11	1	Seal
8	12 094 07	1	Base-Air Cleaner (Incl. Ref.#9, 10)
9	12 072 04	1	Stud-Mounting Plate
10	12 086 01	1	Screw-Mounting Plate
11	12 041 02	1	Gasket-Air Cleaner
*	12 113 04	1	Decal-Air Cleaner

Ref. No.	Part No.	Qty.	Description
PROTOTYPE			

* Not illustrated
Obtain parts from Kohler



Exhaust (Kohler CV13T-PS-21524)

Ref. No.	Part No.	Qty.	Description
1	12 068 03	1	Muffler
2	M-0829033	2	Stud M8x1.25x20
3	12 755 30	1	Kit-Bracket (Incl. Ref.#4-9)
4	M-0650012	2	Screw
5	X-25-52	2	Washer
6	12 041 03	1	Gasket - Exhaust
7	12 126 55	1	Bracket-Muffler
8	12 468 01	1	Washer
9	12 086 13	1	Screw
10	M-0645025	1	Screw
11	12 445 06	1	Strap-Lifting

Ref. No.	Part No.	Qty.	Description

PROTOTYPE

* Not illustrated
Obtain parts from Kohler



PROTOTYPE