



LED Work Light Kit

Groundsmaster® 3200 or 3300 Series Traction Unit with ROPS

Model No. 31997

Installation Instructions

Installation

Loose Parts

Use the chart below to verify that all parts have been shipped.

Procedure	Description	Qty.	Use
1	No parts required	–	Prepare for installation.
2	Light mount U-bolt Locknut (3/8 inch) Flange-head bolt (5/16 x 1 inch) Flange Locknut (5/16 inch) Work light assembly Switch bracket Switch Hole plug	2 6 12 4 4 4 1 1 1	Install the work lights and the switch.
3	Long cable tie Short cable tie Work light harness	6 2 1	Connect the wire harness.

1

Preparing for Installation

No Parts Required

Procedure

Note: Retain all removed parts for later installation unless otherwise noted.

1. Park the machine on a level surface, lower the attachment, shut off the engine, engage the parking brake, and remove the key.
2. Disconnect the negative (-) battery cable from the battery; refer to the electrical system maintenance section of the traction unit *Operator's Manual*.



2

Installing the Work Lights and the Switch

Parts needed for this procedure:

2	Light mount
6	U-bolt
12	Locknut (3/8 inch)
4	Flange-head bolt (5/16 x 1 inch)
4	Flange Locknut (5/16 inch)
4	Work light assembly
1	Switch bracket
1	Switch
1	Hole plug

Procedure

1. Install a light mount to each side of the machine with 2 U-bolts and 4 locknuts (3/8 inch) as shown in [Figure 1](#).

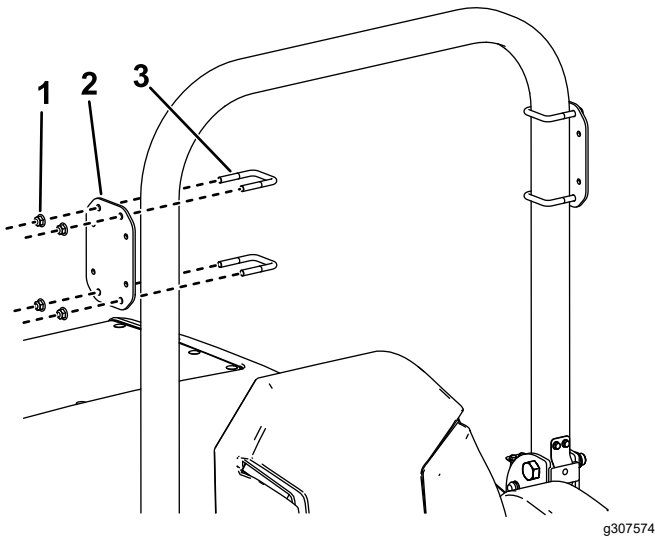


Figure 1

1. Locknut (3/8 inch)
2. Light mount
3. U-bolt

2. Install 2 work lights assemblies to each light mount with 2 flange-head bolts (5/16 x 1 inch) and 2 locknuts (5/16 inch) as shown in [Figure 2](#).

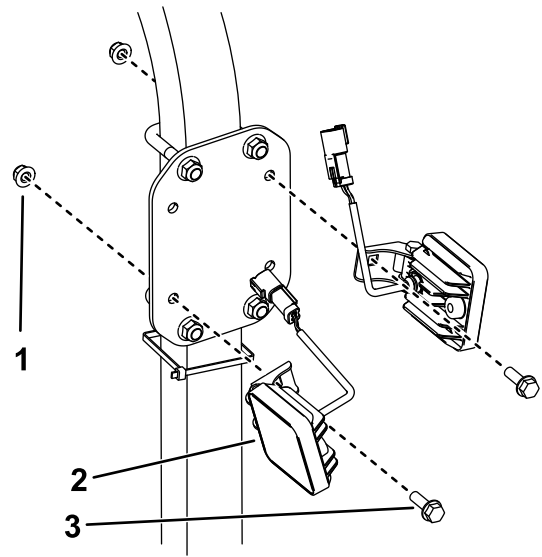


Figure 2

1. Locknut (5/16 inch)
2. Work light assembly
3. Flange-head bolt (5/16 x 1 inch)

3. Install the switch and the hole plug to the switch bracket as shown in [Figure 3](#).
4. Install the switch assembly to the front of the ROPS using 2 U-bolts and 2 locknuts (3/8 inch) as shown in [Figure 3](#).

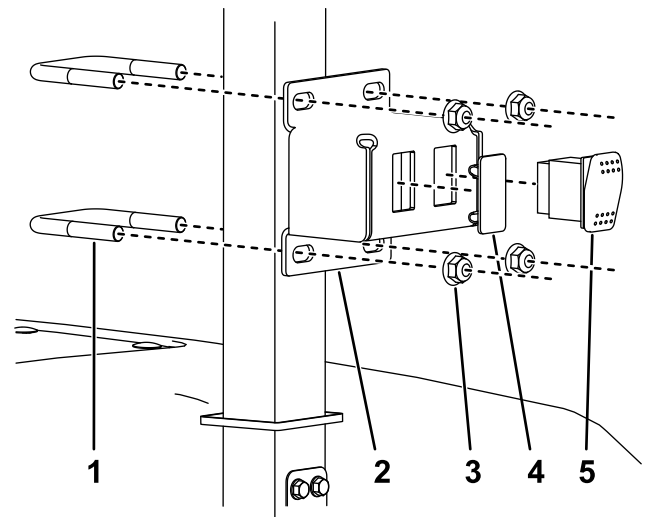


Figure 3

1. U-bolt
2. Switch bracket
3. Locknut (3/8 inch)
4. Hole plug
5. Switch

3

Connecting the Wire Harness

Parts needed for this procedure:

6	Long cable tie
2	Short cable tie
1	Work light harness

Procedure

Note: When you install this kit and the Auxiliary Hydraulic Kit, use the auxiliary power connector from the Power Harness Kit shown in [Figure 4](#).

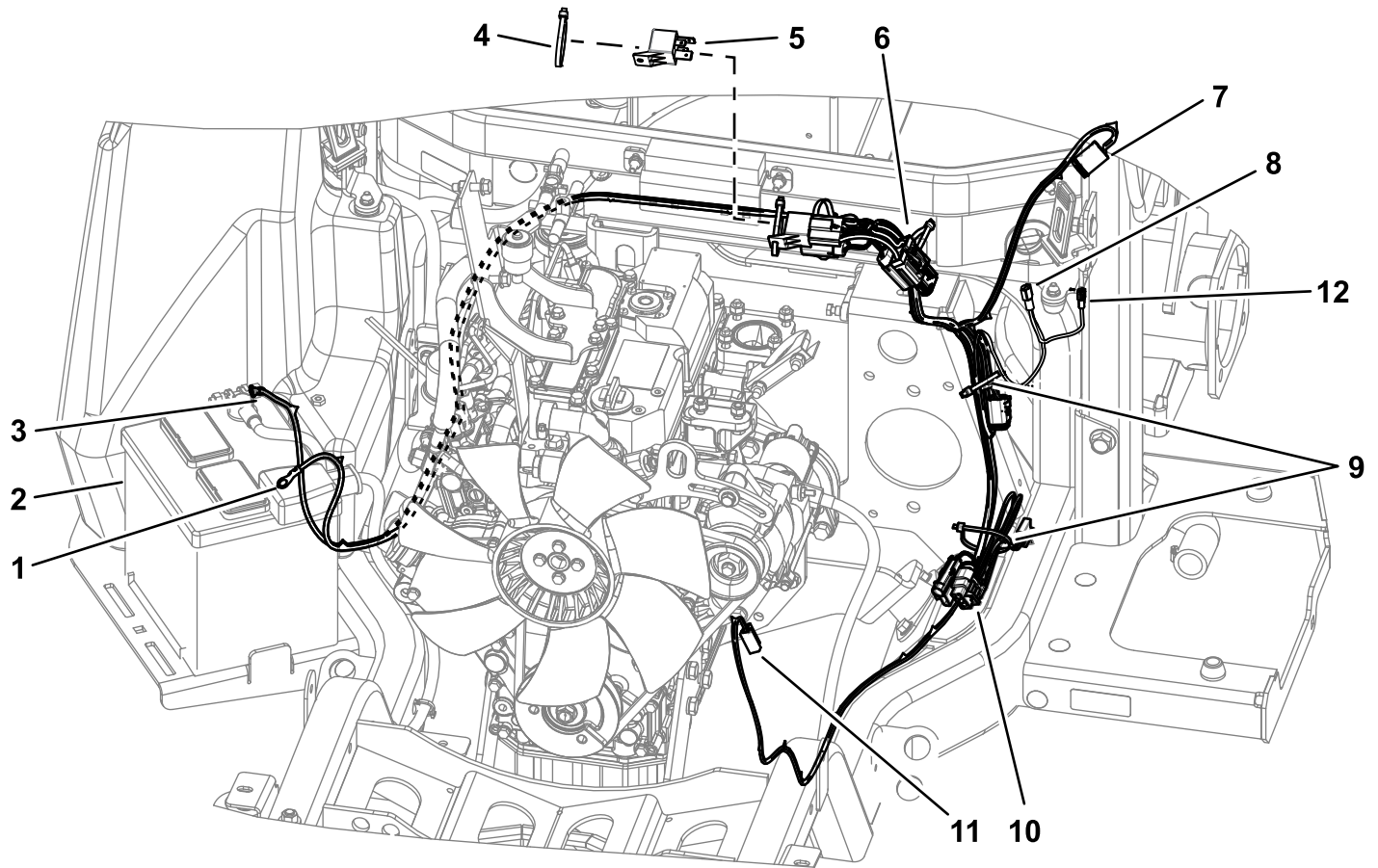


Figure 4

g398735

- | | | | |
|-----------------------------------|--------------|--|--------------------------------------|
| 1. Positive (+) battery connector | 4. Cable tie | 7. Optional control connection | 10. Accessory power connections |
| 2. Battery | 5. Relay | 8. Main harness connection | 11. Optional washer fluid connection |
| 3. Negative (-) battery connector | 6. Fuses | 9. Use cable ties to secure excess wire. | 12. Auxiliary power connector |

1. Route the work light wire harness and loosely secure it to the ROPS with long cable ties as shown in [Figure 5](#).

Important: Route the wire harness away from any sharp, hot, or moving parts; secure it with cable ties as needed.

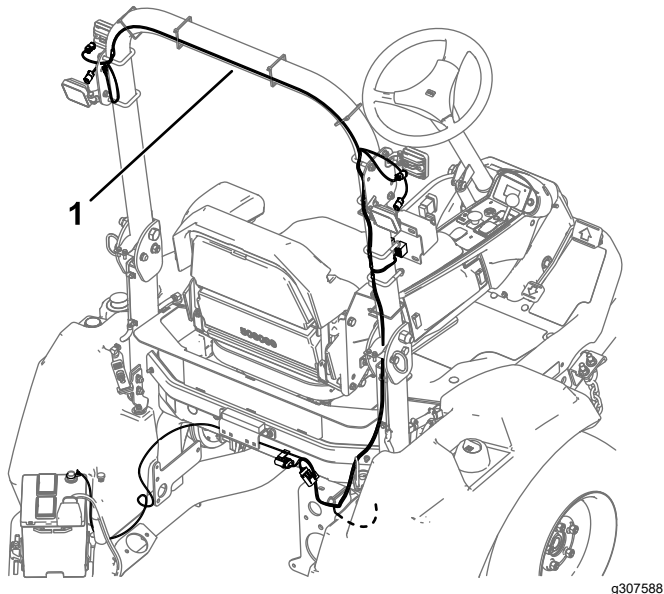


Figure 5

Some parts not shown for clarity.

1. Route the wire harness along the back of the ROPS.

2. Connect the 4 square connectors to the work lights and connect the large light connector to the switch.

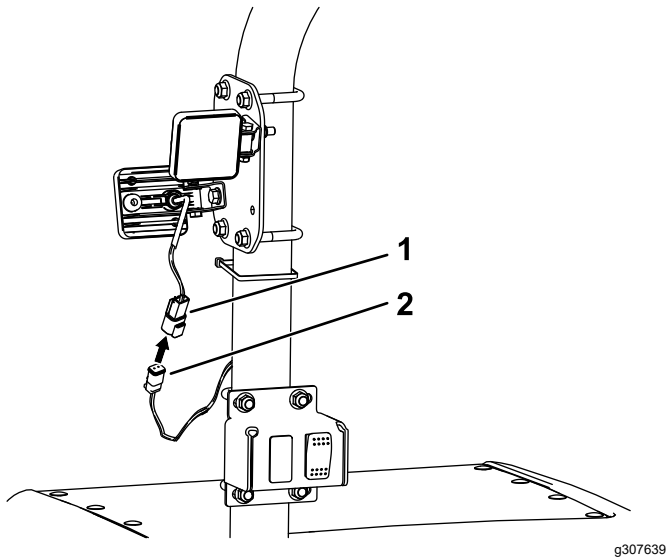


Figure 6

1. Work light connector
2. Work light harness

3. Raise the hood and locate the loose tab connector on the main wire harness at the right side of the machine ([Figure 7](#)).

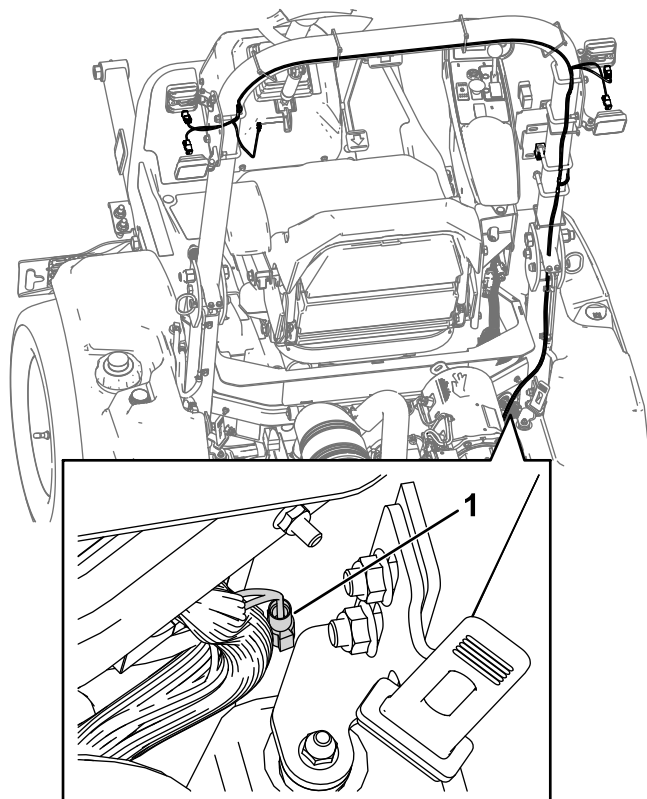
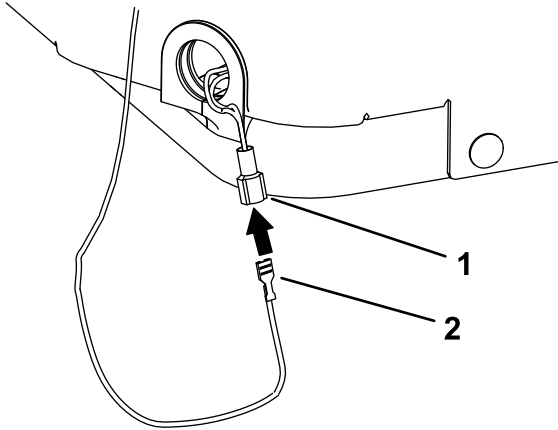


Figure 7

1. Tab connector on the main wire harness

4. Connect the loose single-wire socket to the loose tab connector on the main harness (Figure 8).



g307611

Figure 8

- | | |
|--------------------------------------|-------------------------------------|
| 1. Tab connector on the main harness | 2. Socket on the work light harness |
|--------------------------------------|-------------------------------------|

-
5. Connect the single-wire ring terminal at the end of the work light harness to the negative (-) terminal of the battery.
 6. Secure the in-line fuse covers to the harness using the 2 short cable ties.
 7. Tighten all cable ties and ensure that the work light harness and all connections are secure.
 8. Connect the negative (-) battery cable to the battery; refer to the electrical system maintenance section of the traction unit *Operator's Manual*.

Operation

Using the Lights

To illuminate the work lights, press up on the light switch installed to the front of the ROPS.

Notes:

Notes:



Count on it.