



# Thigh Support Kit

## Dingo® Compact Utility Loader

Part No. 105-0330

Form No. 3327-521

### Installation Instructions

## Loose Parts List

Description	Qty.	Use
Thigh support pad	1	Install the Thigh Support Kit
Adjustment plate	1	
Thigh support bracket	1	
Carriage bolt, 5/16 x 7/8 inch	4	
Flat washer	4	
Locknut, 5/16 inch	6	
Bolt, 5/16 x 7/8 inch	2	
Knob	2	
CE Decal (104-6109)	1	Install on international units.

## Safety and Instruction Decals



Safety decals and instructions are easily visible to the operator and are located near any area of potential danger. Replace any decal that is damaged or lost.



104-6108

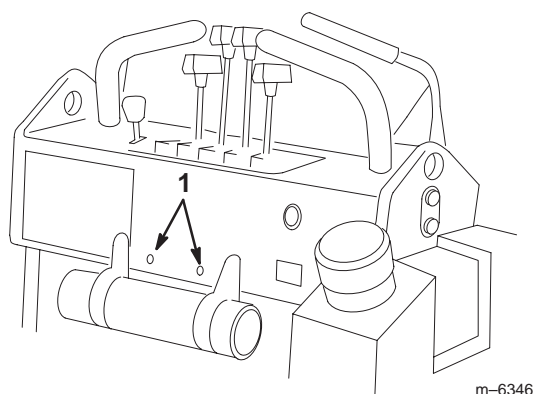


104-6109

1. Tipping hazard—do not step off the platform with the load raised and move the traction unit with the heavy end up hill.

## Installing the Kit

1. Check the front of your control panel for two holes located between the manual tube mounting brackets (Fig. 1).



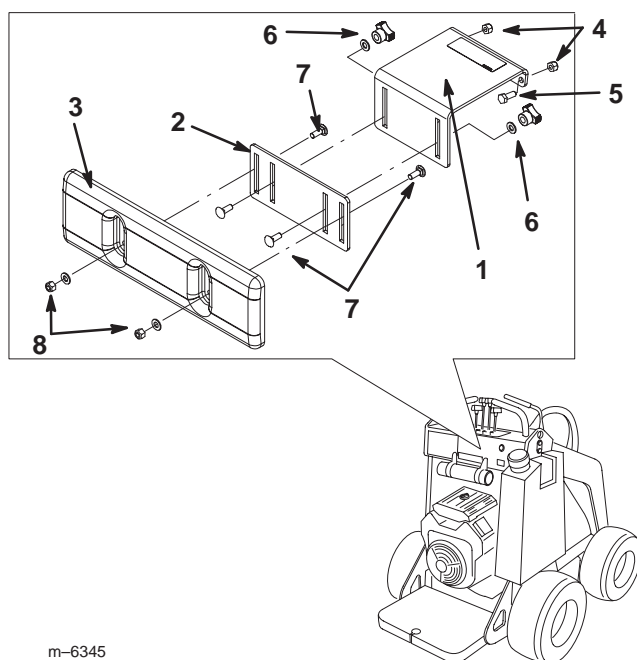
m-6346

**Figure 1**

1. Mounting holes

If these holes do not exist, complete the following:

- A. Use the thigh support bracket as a template to mark the locations for 2 holes centered between the manual tube mounting brackets and 1/2 inch above the bottom of the control panel.
  - B. Drill 2 holes (11/32 inch dia) at the marked locations.
2. Install the thigh support bracket on the control panel (Fig. 2), using 2 bolts (5/16 x 7/8 inch) and 2 locknuts (7/8 inch).



m-6345

**Figure 2**

- |                          |                                       |
|--------------------------|---------------------------------------|
| 1. Thigh support bracket | 6. Knob and flat washer               |
| 2. Adjustment plate      | 7. Carriage bolt, 5/16 x 7/8 inch     |
| 3. Thigh support pad     | 8. Locknut, 5/16 inch and flat washer |
| 4. Locknut, 5/16 inch    |                                       |
| 5. Bolt, 5/16 x 7/8 inch |                                       |
3. Install the adjustment plate on the thigh support bracket (Fig. 2), using 2 carriage bolts (5/16 x 7/8 inch), 2 flat washers, and 2 knobs.
  4. Install the thigh support pad on the adjustment bracket (Fig. 2), using 2 carriage bolts (5/16 x 7/8 inch), 2 flat washers, and 2 locknuts (5/16 inch).

## Installing the CE Decal (International Units Only)

If you are installing this kit on a machine used outside of the United States, install decal number 104-6109 over decal number 104-6108, located on the thigh support mounting bracket.

## Adjusting the Thigh Support

To adjust the thigh support, loosen the knobs and raise or lower the support pad to the desired height. You can also obtain additional adjustment by loosening the nuts securing the pad to the adjustment plate, moving the plate up or down as needed. Tighten all fasteners securely when finished.