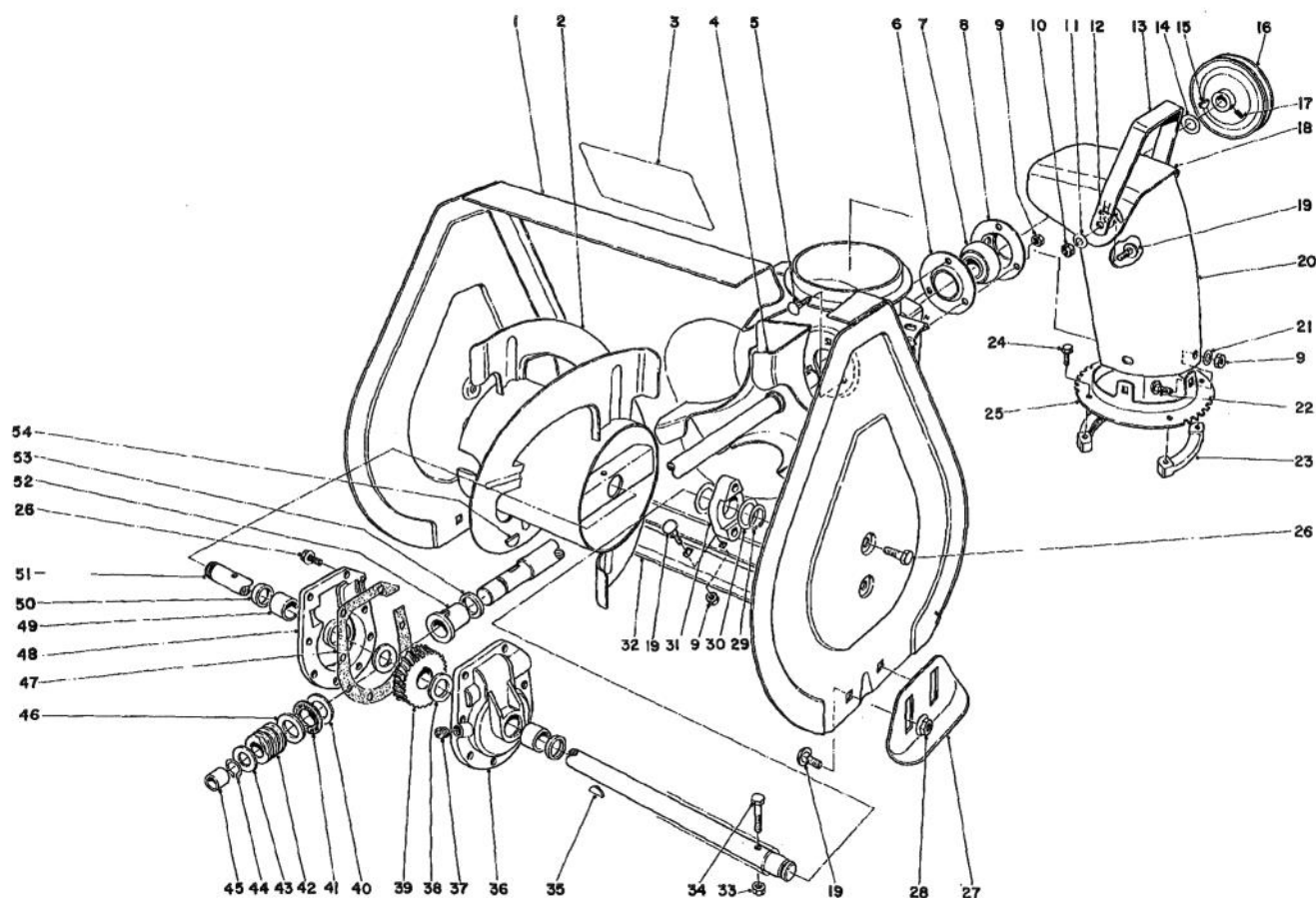


TORO®

MODEL NO. 38010-0000001 & UP

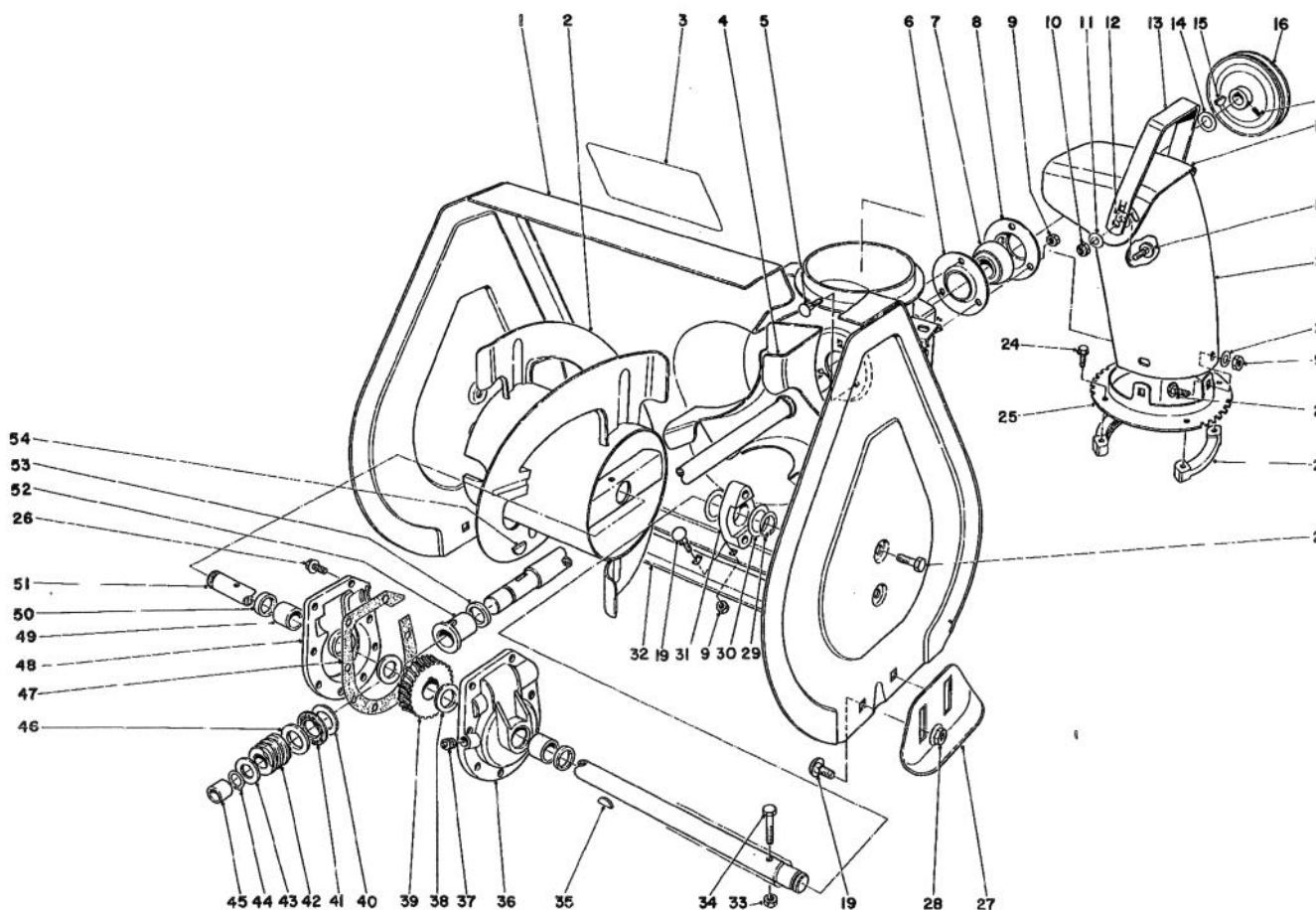
**PARTS
CATALOG****421 SNOWTHROWER****AUGER ASSEMBLY**

Ref. No.	Part No.	Description	No. Used
1	37-6650	Auger Housing	1
2	39-1190	Auger L.H.	1
*	39-1180	Auger R.H.	1
3	29-6350	Decal — Auger Warning	1
4	37-6990	Shaft & Impeller	1
5	3230-10	Carriage Bolt	3
6	26-6110	Bearing Flange Front	1
7	26-6100	Ball Bearing	1
8	26-6120	Bearing Flange Rear	1
9	3296-29	Locknut	11
10	32152-1	Locknut	2
11	3290-340	Washer Belleville	2
12	20-4320	Washer Rubber	2
13	37-8930	Handle Deflector	1
14	3-0737	Washer	1

*Not Illustrated

Ref. No.	Part No.	Description	No. Used
15	3257-5	Key	1
16	37-6890	Pulley	1
17	3242-4	Set Screw	2
18	37-8920	Deflector	1
19	3230-1	Carriage Bolt	11
20	37-8910	Chute — Discharge	1
21	3256-23	Washer	3
22	3230-18	Carriage Bolt	3
23	37-6490	Retainer — Chute Ring	3
24	27-0220	Self Tapping Screw	6
25	37-8940	Chute Ring	1
26	32144-11	Self Tapping Screw	12
27	3-3866	Skid	2
28	32128-20	Flange Nut	4
29	32151-36	Snap Ring	2

COPYRIGHT © ALL RIGHTS RESERVED
The Toro Company — 1979

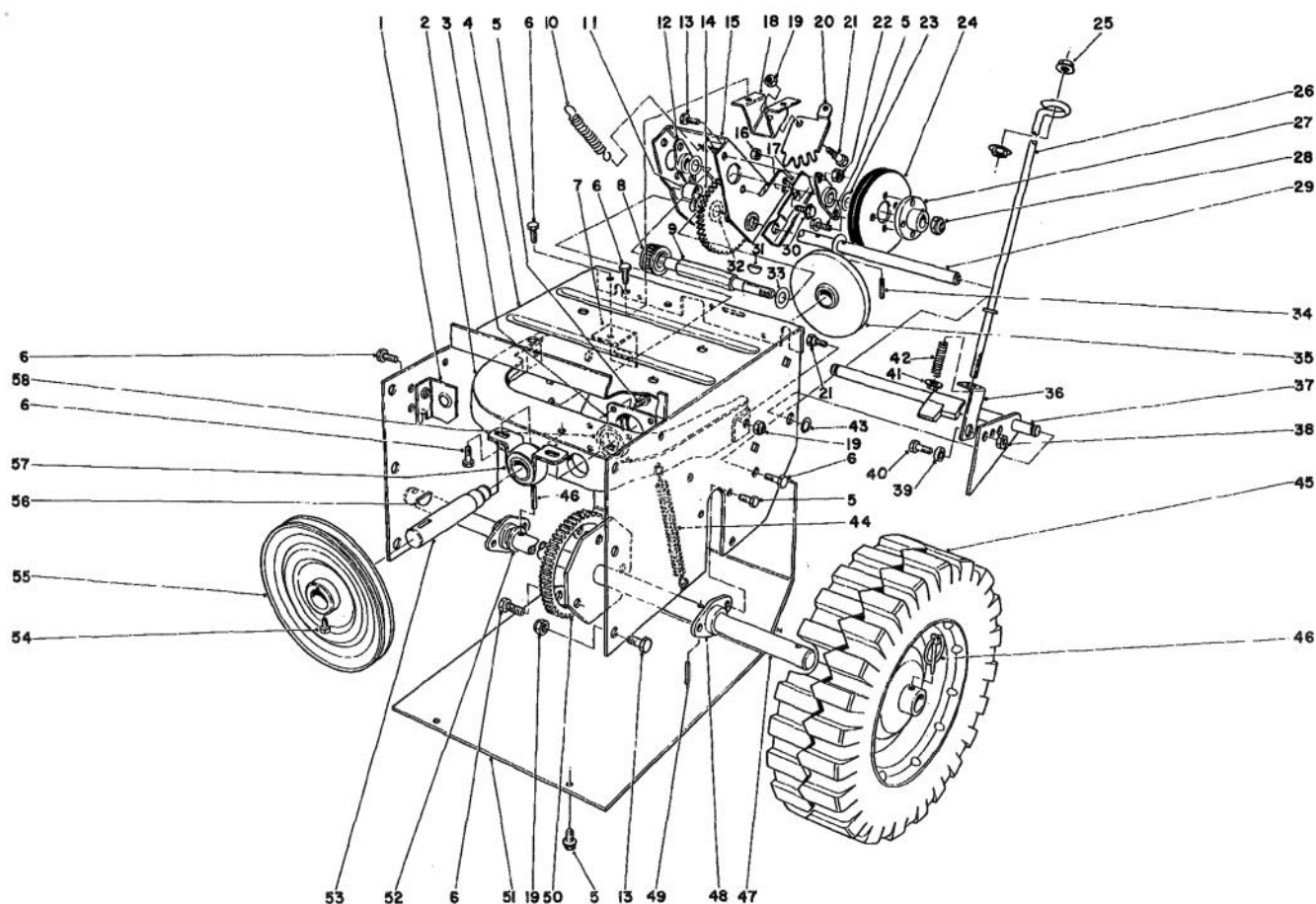


AUGER ASSEMBLY (Continued)

Ref. No.	Part No.	Description	No. Used
30	5-1550	Thrust Washer	4
31	37-6550	Auger Bearing	2
32	39-1550	Scraper Blade	1
33	32152-4	Locknut	2
34	321-10	Capscrew	2
35	3257-33	Woodruff Key	1
36	37-8850	Gear Case R.H. (Incl. Ref. #49 & 50)	1
37	281-1	Pipe Plug	1
38	252-71	Thrust Bearing	2
39	23-9050	Gear	1
40	257-3	Thrust Washer	1
41	252-76	Needle Thrust Bearing	1
42	5-7170	Worm	1

Ref. No.	Part No.	Description	No. Used
43	3-8664	Washer	1
44	32120-72	Retaining Ring	1
45	256-32	Bushing	1
46	252-80	Thrust Washer	1
47	19-8520	Gasket	1
48	37-8860	Gear Case L.H. (Incl. Ref. #49 & 50)	1
49	256-237	Bushing	2
50	7-0045	Oil Seal	2
51	37-6800	Shaft — Auger	1
52	37-6560	Bushing — Input	1
53	237-87	Seal	1
54	3257-23	Key — Woodruff	1
*	37-6960	Gear Case Assembly Complete	1

*Not Illustrated

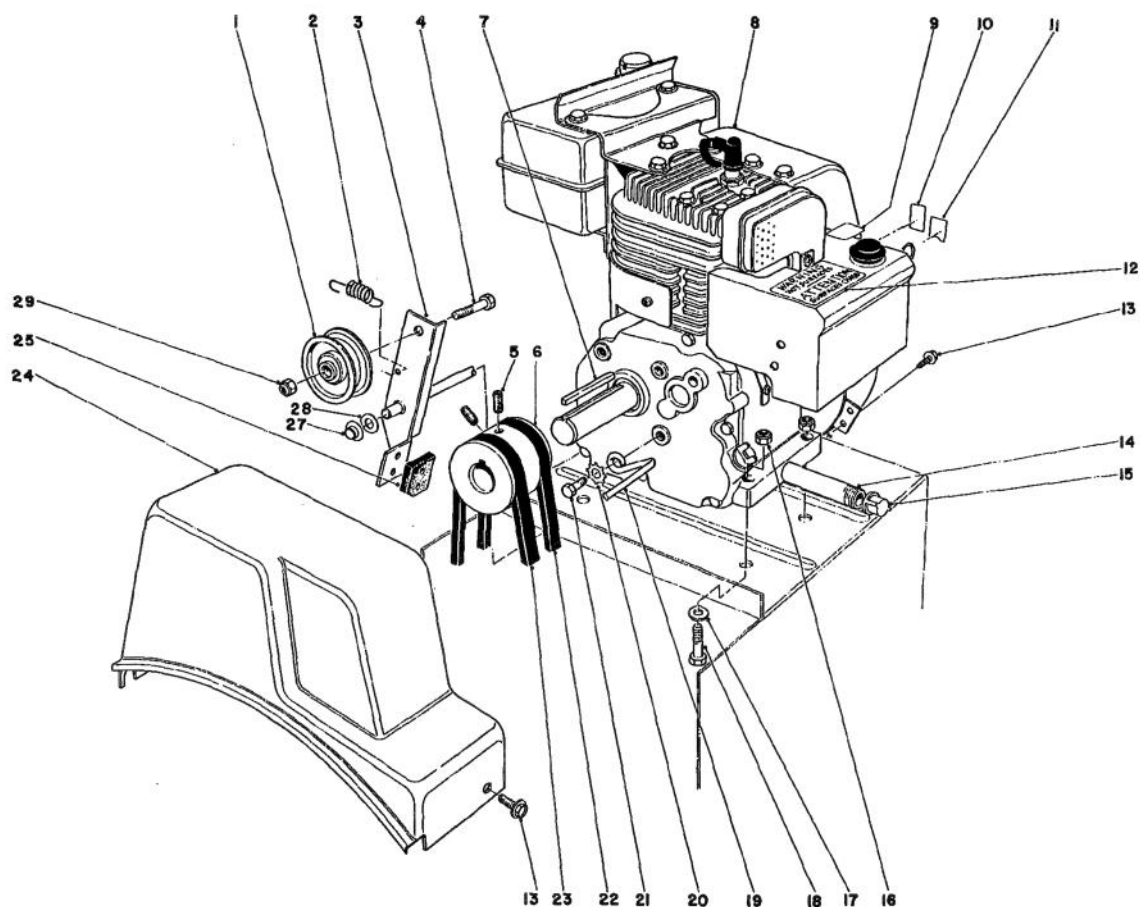


TRACTION ASSEMBLY

Ref. No.	Part No.	Description	No. Used
1	37-9060	Mounting — Clutch Rod Front	1
2	37-6740	Frame — Friction Plate	1
3	37-6730	Cup — Bearing	1
4	37-8900	Traction Frame	1
5	12-3270	Self Tapping Screw	16
6	32144-11	Self Tapping Screw	12
7	37-9070	Mounting Clutch Rear	1
8	37-6500	Sliding Gear	1
9	37-6780	Hex Shaft	1
10	37-8880	Spring — Traction Disengage	1
11	256-86	Bushing	1
12	20-1620	Bearing Friction Wheel	2
13	322-2	Cap screw	10
14	37-9160	Intermediate Gear (Incl. Ref. #11)	1
15	39-1230	Bracket Sliding	1
16	3296-16	Locknut	1
17	39-1250	Cam Receiver	1
18	37-8790	Mounting Quadrant Gear	1
19	3296-29	Locknut	9
20	37-8800	Quadrant Gear	1
21	37-8770	Shoulder Bolt	3
22	32152-1	Locknut	4
23	36-4790	Thrust Washer	2
24	37-6570	Friction Wheel	1
25	32128-33	Flange Nut	2
26	39-3060	Lower Traction Rod	1
27	39-1520	Hub — Friction Wheel Mount	1
28	3296-48	Locknut	1
29	37-6760	Shaft — Pivot	1

Ref. No.	Part No.	Description	No. Used
30	11-9760	Self Tapping Screw	1
31	3257-24	Key	1
32	10-9280	Thrust Washer	2
33	5-7570	Thrust Washer	2
34	32121-45	Roll Pin	2
35	38-0800	Friction Plate	1
36	38-4490	Bracket Traction	1
37	39-1220	Traction Engagement Arm	1
38	32152-4	Locknut	1
39	38-4510	Spacer — Traction Bracket	1
40	321-4	Cap screw	1
41	32128-10	Flange Locknut	1
42	38-4520	Spring Compression	1
43	32151-61	Retaining Ring	2
44	37-8870	Spring — Friction Plate Frame	1
45	38-1400	Wheel	2
46	3290-243	Klik Pin	2
47	37-6970	Axle Shaft	1
48	37-6850	Axle Bearing	2
49	32121-31	Roll Pin	2
50	37-6520	Axle Gear	1
51	37-6830	Bottom Cover	1
52	3-8664	Thrust Washer	2
53	37-6750	Shaft Friction Plate	1
54	3242-4	Set Screw	2
55	38-5650	Pulley	1
56	3257-23	Key	1
57	38-4470	Bushing Assembly	1
58	38-7820	Bearing	1
*	37-7010	Tire Chain Kit (Optional)	1

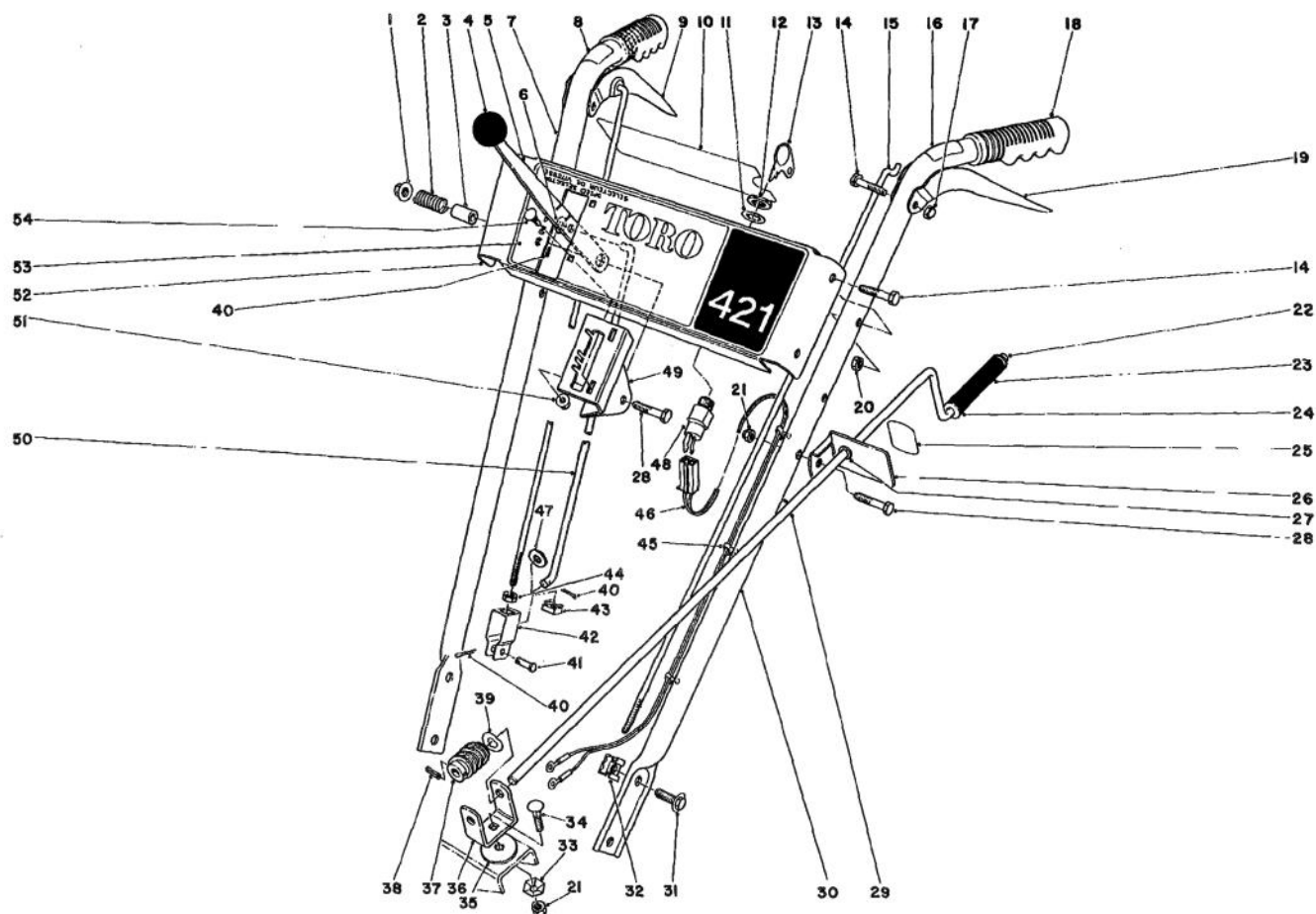
*Not Illustrated



ENGINE ASSEMBLY

Ref. No.	Part No.	Description	No. Used
1	3-4244	Idler Pulley	1
2	10-3890	Spring — Auger Disengage	1
3	39-5300	Auger Clutch (Incl. Ref. #25)	1
4	323-29	Capscrew	1
5	3246-14	Set Screw	2
6	37-6720	Engine Pulley	1
7	5-0930	Key	1
8	221-639	Engine	1
9	39-3860	Decal — Primer	1
10	37-8890	Decal — Throttle	1
11	39-3850	Decal — Choke	1
12	29-6390	Decal — Hot Surface Warning	1
13	12-3270	Self Tapping Screw	3
14	289-8	Pipe Nipple	1

Ref. No.	Part No.	Description	No. Used
15	288-2	Pipe Cap	1
16	3296-29	Locknut	4
17	3256-23	Washer	4
18	322-7	Capscrew	4
19	37-8990	Belt Retainer	1
20	3255-8	Lockwasher	1
21	3210-2	Capscrew	1
22	37-9090	V-Belt Traction	1
23	37-9080	V-Belt Auger	1
24	37-6900	Belt Cover	1
25	39-5720	Brake Pad & Cushion Assy.	1
27	3290-320	Push-on	1
28	3256-24	Washer	1
29	32152-2	Locknut	1

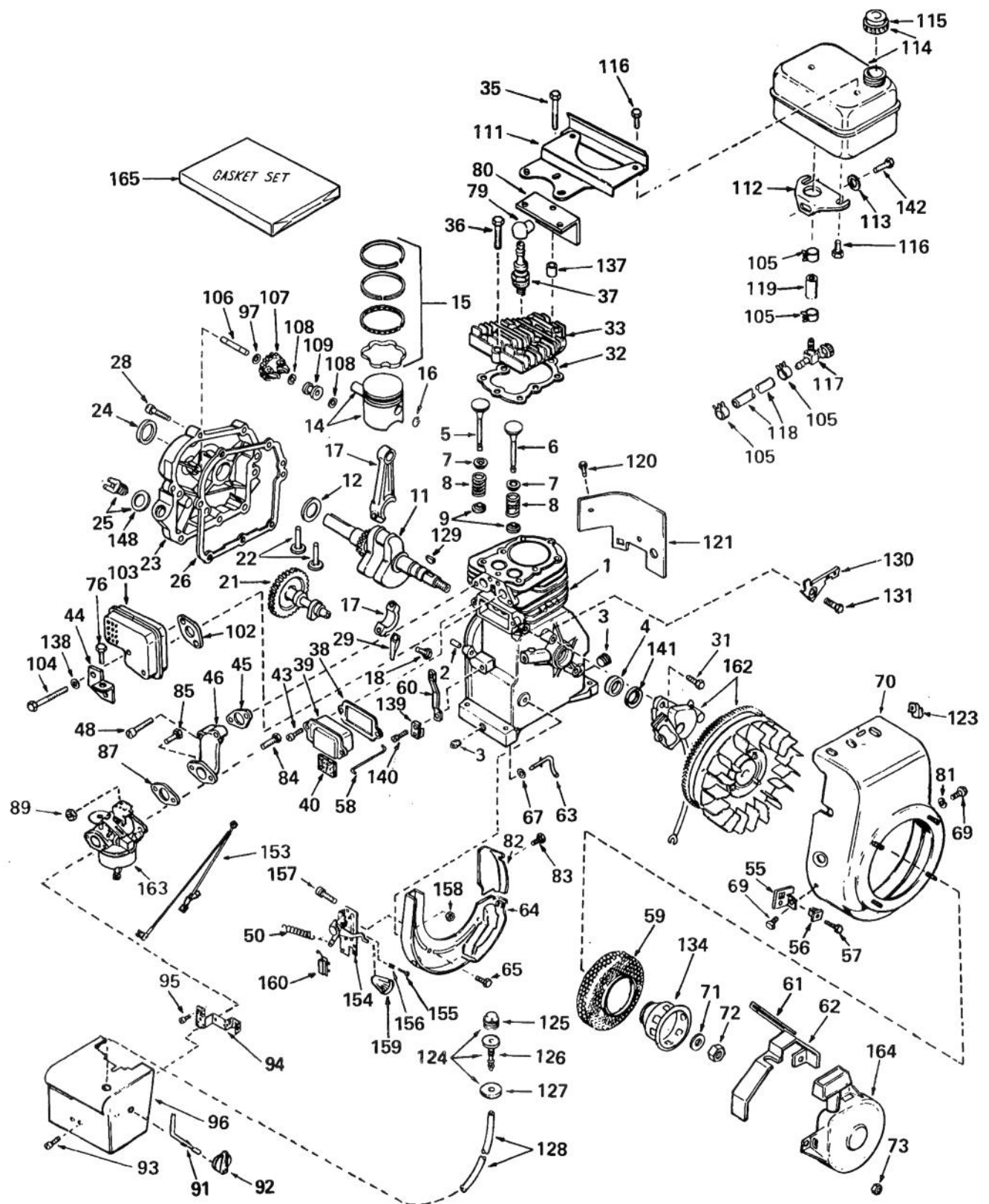


HANDLE ASSEMBLY

Ref. No.	Part No.	Description	No. Used
1	32128-13	Locknut	1
2	37-9150	Spring	1
3	37-8840	Spacer — Speed Control	1
4	233-21	Knob	1
5	37-8820	Speed Selector	1
6	3256-2	Washer	1
7	37-8710	Handle Ring	1
8	39-1130	Decal — Auger Engage	1
9	39-4810	Lever — Auger Control	1
10	37-9140	Decal — Escutcheon Back	1
11	3254-5	Lockwasher	1
12	218-461	Nut	1
13	33-2010	Key	2
14	321-37	Capscrew	6
15	39-3070	Link Upper	2
16	39-1140	Decal — Traction Engage	1
17	32111-7	Cap Nut	2
18	37-9110	Grips	2
19	39-4820	Lever — Traction Control	1
20	32152-4	Locknut	4
21	3296-29	Locknut	2
22	3290-320	Push-on Speed Nut	1
23	20-2060	Chute Control Grip	1
24	3256-24	Washer	1
25	29-6370	Decal — Chute Direction	1
26	25-6090	Bracket — Chute Control Mtg.	1
27	256-249	Nyliner	1

Ref. No.	Part No.	Description	No. Used
28	322-7	Capscrew	1
29	8-8570	Rod — Chute Control	1
30	37-8720	Handle Left	1
31	3234-14	Flange Screw	4
32	3290-196	Retained Nut	4
33	3290-238	Pyramidal Washer	1
34	3230-2	Carriage Bolt	1
35	3-6715	Spacer	1
36	11-7110	Bracket Worm	1
37	8-8600	Worm Gear Chute	1
38	32121-50	Roll Pin	1
39	3290-212	Spring Washer	1
40	3272-4	Cotter Pin	1
41	283-3	Clevis Pin	1
42	39-3080	Clevis	1
43	32115-5	Retained Nut	1
44	3218-1	Jam Nut	1
45	3290-378	Tie Wrap	2
46	37-8980	Wire Assembly	1
47	3256-23	Washer	1
48	29-5560	Key Switch	1
49	39-1280	Mount — Speed Selector	1
50	39-7570	Rod — Speed Selector	1
51	32128-32	Flange Locknut	2
52	39-1260	Panel — Escutcheon	1
53	39-1270	Decal — Escutcheon	1
54	3229-22	Carriage Bolt	2

ENGINE TECUMSEH MODEL HS40-55513F

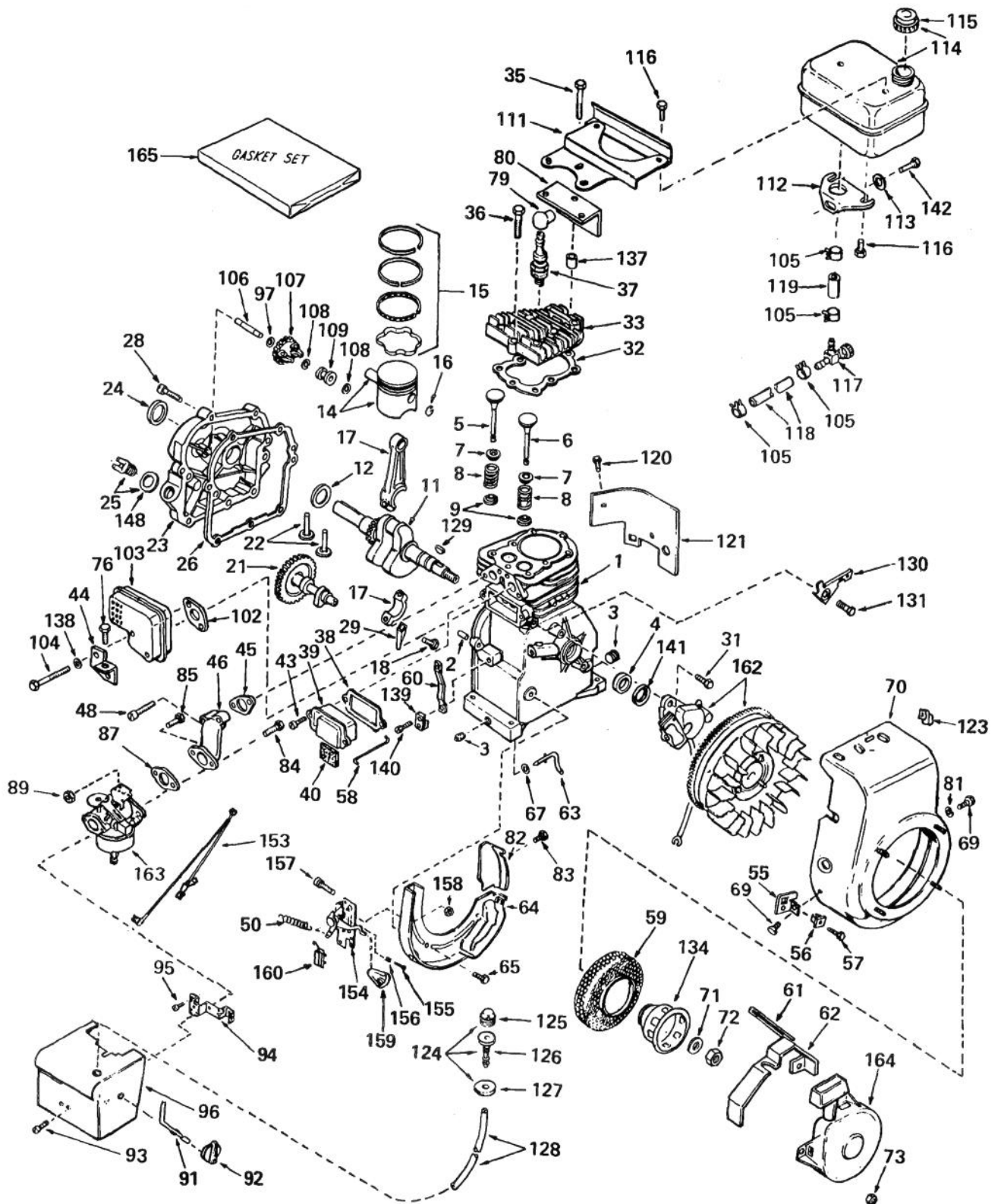


ENGINE TECUMSEH MODEL HS40-55513F

Ref. No.	Part No.	Description	No. Used	Ref. No.	Part No.	Description	No. Used
1	33014A	Cylinder Assembly (Incl. Ref. #2, 3 & 4)	1	37	34251	Resistor Spark Plug (Canadian Regulations require RJ-17LM resistor spark plug)	1
2	26727	Pin, Dowel	2	38	*31619	Gasket, Valve Spring Cover	1
3	27642	Plug, Sq. Hd. Pipe, 1/4-18 (Oil Drain)	2	39	31337	Breather Assembly (Incl. Ref. #38 & 40)	1
4	32600	Seal, Oil	1	40	31410	Element, Breather	1
5	32644	Valve, Intake (Std.) (Incl. Ref. #7, 8 & 9)	1	43	650128	Screw, Fil. Hd. Sems	2
5	32645	Valve, Intake (1/32" Oversize) (Incl. Ref. #7, 8 & 9)	1	44	33333	Bracket, Carburetor Cover	1
6	29313B	Valve, Exhaust (Std.) (Incl. Ref. #7, 8 & 9)	1	45	*32649	Gasket, Intake	1
6	29315B	Valve, Exhaust (1/32" Oversize) (Incl. Ref. #7, 8 & 9)	1	46	32859	Pipe, Intake	1
7	31671	Cap, Upper Valve Spring	2	48	650664	Screw, Fil. Hd. Sems	2
8	31672	Spring, Valve	2	50	31426	Spring, Extension	1
9	31673	Cap, Lower Valve Spring	2	55	34126	Bracket, Grommet Mounting	1
11	32890	Crankshaft Assembly	1	56	28545	Grommet	1
12	32323	Washer, Thrust	1	57	650643	Screw, Pan Hd. Self-Tap	1
14	32603B	Piston & Pin Assembly (Incl. Ref. #16) (Std.)	1	58	32698	Link, Governor-to-Throttle	1
14	34520	Piston, Pin & Ring Assembly (Incl. Ref. #15 & 16) (Std.)	1	59	33668	Screen, Starter Cup	1
14	32604B	Piston & Pin Assembly (Incl. Ref. #16) (.010 Oversize)	1	60	32871	Lever, Governor	1
14	34521	Piston, Pin & Ring Assy. (Incl. Ref. #15 & 16) (.010 Oversize)	1	61	32576	Seal, Snow Guard	2
14	32605B	Piston & Pin Assembly (Incl. Ref. #16) (.020 Oversize)	1	62	34127	Guard, Starter	1
14	34522	Piston, Pin & Ring Assy. (Incl. Ref. #15 & 16) (.020 Oversize)	1	63	31334	Rod, Governor	1
15	32606	Ring Set, Piston (Std.)	1	64	133342	Baffle, Blower Housing	1
15	32607	Ring Set, Piston (.010 Oversize)	1	65	650561	Screw, Hex Washer Hd. Durlock	2
15	32608	Ring Set, Piston (.020 Oversize)	1	67	28277	Washer, Flat	1
16	20381	Ring, Piston Pin Retaining	2	69	29212	Screw, Hex Hd. Sems	2
17	32875	Rod Assembly, Connecting (Incl. Ref. #18 & 29)	1	70	33663B	Housing, Blower	1
18	32610A	Screw, Connecting Rod	2	71	650763	Washer, Belleville	1
21	33158	Camshaft (Compression Release)	1	72	650607	Nut, Flywheel	1
22	27241	Lifter, Valve	2	73	29752	Nut & Lockwasher Assembly	4
23	32700A	Cover, Cylinder (Incl. Ref. #24, 25, 106 & 148)	1	76	650735	Screw, Hex Hd. Sems Taptite	1
24	27897	Seal, Oil	1	79	610118	Cover, Spark Plug	1
25	27625	Plug, Oil Filler (Incl. Ref. #148)	2	80	33344	Baffle, Heat	1
26	*27677	Gasket, Cylinder Cover	1	81	650168	Washer, Flat	1
28	30564	Screw, Hex Hd. Sems	7	82	33341	Baffle, Extension	1
29	32654	Dipper, Oil	1	83	650701	Screw, Hex Washer Hd. Shakeproof Self-Drilling	1
31	650489	Screw, Hex Hd. Sems	2	84	6202	Screw, Hex Hd.	1
32	*33015	Gasket, Cylinder Head	1	85	650601	Screw, Fil. Hd.	1
33	33016	Head, Cylinder	1	87	*26756	Gasket, Carburetor	1
35	650694A	Screw, Hex Flange Hd.	5	89	29752	Nut & Lockwasher Assembly	2
36	6021A	Screw, Hex Flange Hd.	3	91	34582	Rod, Choke	1
37	33636	Plug, Spark (Champion J-8 or Equivalent) Except for Canada	1	92	34585	Knob, Control	1
				93	650257	Screw, Pan Hd. Sems	2
				94	34583	Bracket, Choke	1
				95	28820	Screw, Fil. Hd. Sems	2
				96	34134	Cover, Carburetor	1
				97	30590A	Washer, Flat	1
				102	*26754	Gasket, Muffler	1
				103	32648	Muffler	1
				104	650327	Screw, Fil. Hd. Sems	2
				105	26460	Clamp, Fuel Line	4
				106	30574	Shaft, Mechanical Governor	1

†In original production the speed control assembly is riveted to the blower housing baffle. Replacement speed control assembly includes screws and nuts for mounting. Replacement baffle has threaded holes.

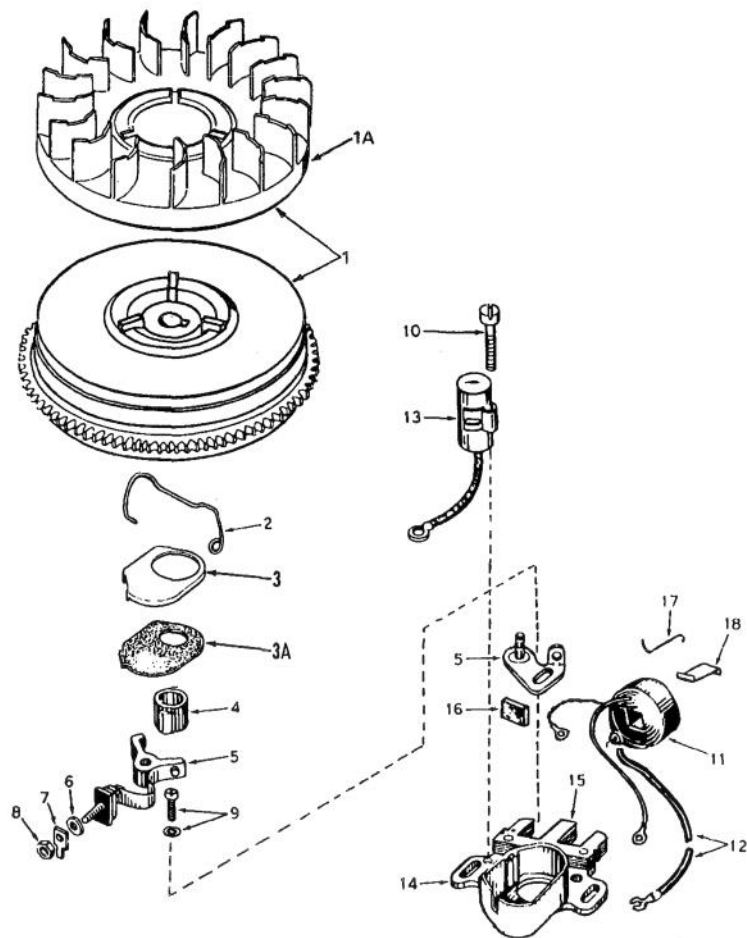
ENGINE TECUMSEH MODEL HS40-55513F (Continued)



ENGINE TECUMSEH MODEL HS40-55513F (Continued)

Ref. No.	Part No.	Description	No. Used	Ref. No.	Part No.	Description	No. Used
107	30591	Gear Assembly, Governor (Incl. Ref. #97)	1	137	28212	Spacer	2
108	29193	Ring, Retaining	2	138	16644	Washer, Lock	2
109	20588A	Spool, Governor	1	139	31335	Clamp, Governor Lever	1
111	28371B	Bracket, Fuel Tank — Upper	1	140	650548	Screw, Hex Washer Hd.	1
112	32762	Bracket, Fuel Tank — Lower	1	141	33876	Gasket, Stator	1
113	650675	Washer, Flat	1	142	650805	Screw, Hex Hd. W/Belleville Washer	1
114	33120	Tank Assembly, Fuel (Incl. Ref. #115 & 116)	1	148	*29673	Gasket, Oil Fill	2
115	30998B	Cap, Fuel Tank	1	153	34241	Wire, Ground	1
116	650665	Screw, Hex Washer Hd. Sems Self-Tap	4	154	†33858A	Control Assembly, Speed (Incl. Ref. #155 thru 158 & 160)	1
117	32961	Shut-off Valve, Fuel	1	155	650549	Screw, Fil. Hd.	1
118	30705	Line, Fuel	1	156	31342	Spring, Compression	1
119	29774	Line, Fuel	1	157	†650139	Screw, Fil. Hd. Sems	2
120	650128	Screw, Fil. Hd. Sems	1	158	†30322	Nut & Lockwasher Assembly	2
121	29745	Extension, Blower Housing	1	159	32410	Knob, Speed Control	1
123	27275	Clip, Wire Retaining	1	160	610973	Terminal Assembly	1
124	32182	Primer Assembly (Incl. Ref. #125, 126 & 127)	1	162	610944A	Magneto (The complete magneto is not available as an assembly. The magneto number is shown for reference purposes only. Order component parts individually, as shown in parts list.)	1
125	32183	Bulb, Primer	1	163	632113	Carburetor (Incl. Ref. #87)	1
126	32184	Body, Primer	1	164	590473	Starter Assembly, Rewind	1
127	32312	Retainer, Primer Bulb	1	165	33240	Gasket (Incl. Items Marked *)	1
128	32180B	Line, Primer	1				
129	610951	Key, Flywheel	1				
130	34212	Bracket, Hold Down	1				
131	30200	Screw, Hex Washer Hd. Self-Tap Sems	1				
134	33667	Cup, Starter	1				

†In original production the speed control assembly is riveted to the blower housing baffle. Replacement speed control assembly includes screws and nuts for mounting. Replacement baffle has threaded holes.

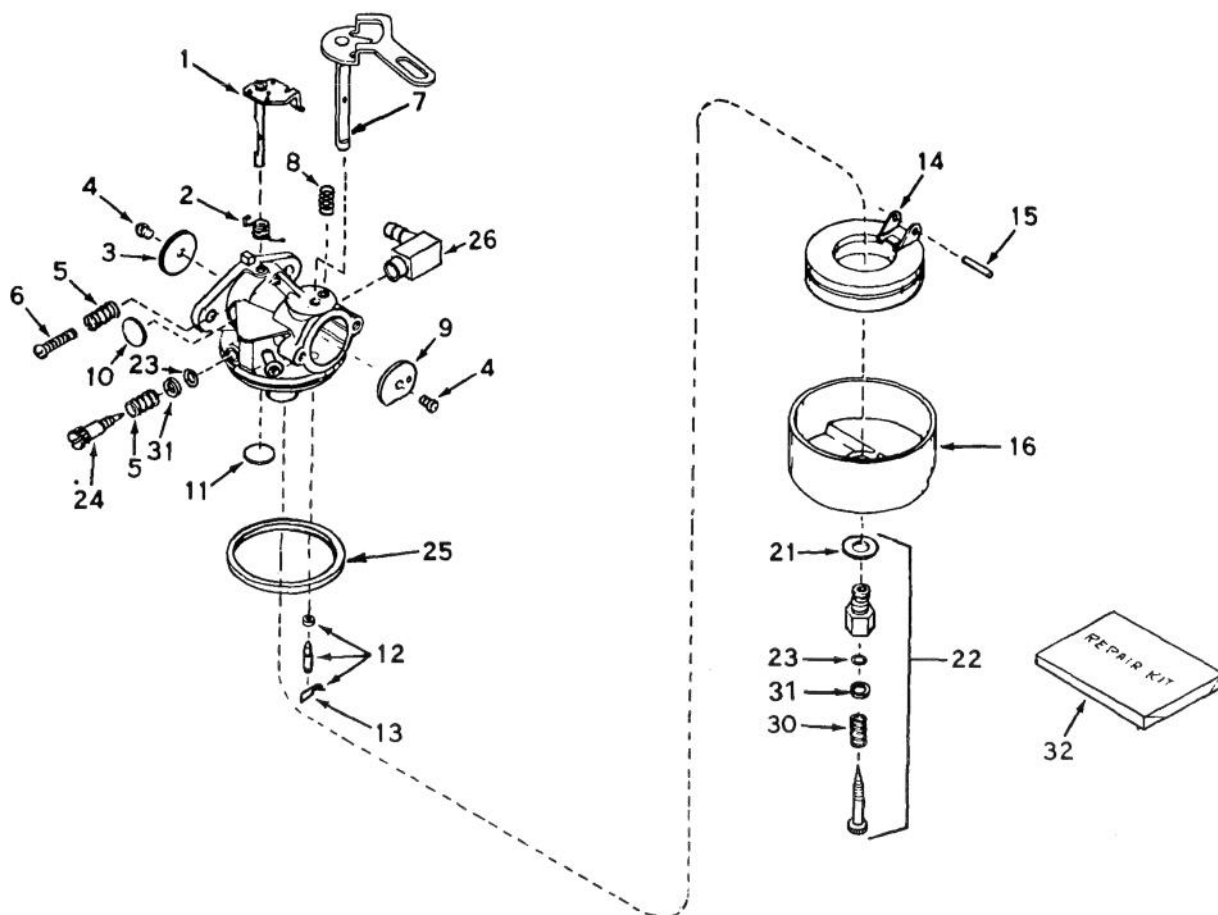


MAGNETO NO. 610944A

Ref. No.	Part No.	Description	No. Used
1	33701B	Flywheel (Incl. #1A, 3 & 3A)	1
1A	610933	Fan	1
2	30551	Spring, Breaker Box	
		Dust Cover	1
3	610947	Cover, Dust	1
3A	610950	Gasket, Dust Cover	1
4	30992	Cam, Breaker	1
5	30547A	Contact Assy., Breaker	1
6	610385	Washer, Terminal	1
7	33356	Tab, Ground Terminal	1
8	610408	Nut Terminal	1
9	29181	Screw & Washer, Breaker	1

Ref. No.	Part No.	Description	No. Used
10	610593	Screw, Condenser	1
11	30560A	Coil Assy. (Incl. #12)	1
12	30554	Wire, Lead	1
13	30548B	Condenser	1
14	30545	Core & Plate	1
15	30561B	Stator Assy. (Incl. #2, 3, 3A, 5 thru 14 & 16 thru 18)	1
16	30549	Felt, Cam Wiper	1
17	31311	Clip, Coil Locking	1
18	29629	Spring, Coil Wedge	1

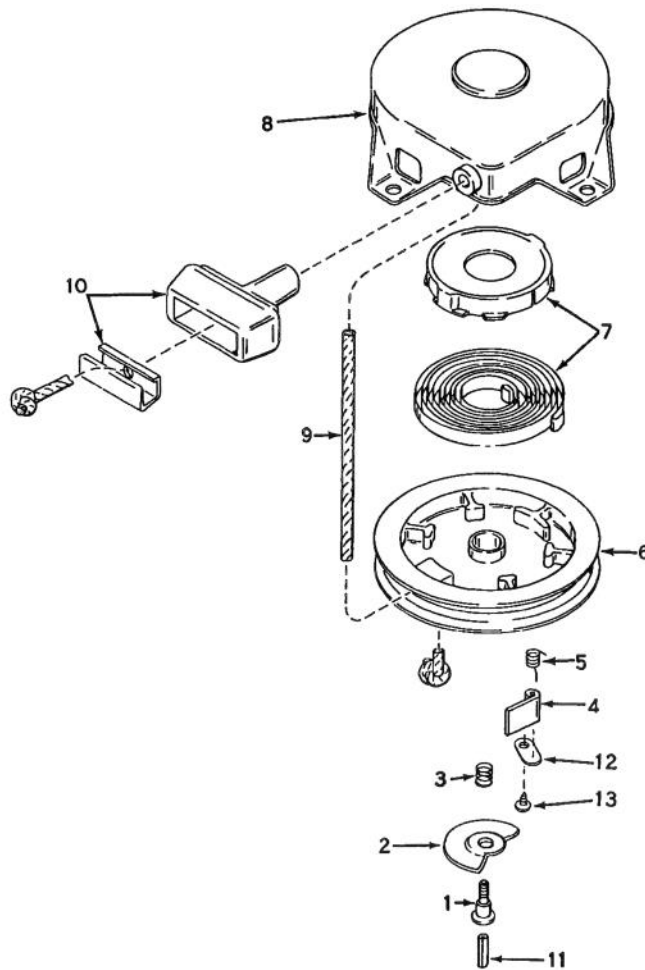
*The complete magneto is not available as an assembly. The magneto number is shown for reference purposes only.
 10 Order component parts individually, as shown in parts list.



CARBURETOR NO. 632113

Ref. No.	Part No.	Description	No. Used
1	631615	Shaft & Lever Assy., Throttle	1
2	632016	Spring, Throttle Return	1
3	631036	Shutter, Throttle	1
4	650506	Screw	2
5	630766	Spring, Idle Regulating Screw	2
6	650417	Screw, Idle Regulating	1
7	632108	Shaft & Lever Assy., Choke	1
8	630735	Spring, Choke Stop	1
9	631815	Shutter, Choke	1
10	*630748	Plug, Welch	1
11	*631027	Plug, Welch	1
12	*631021	Inlet Needle, Seat & Clip Assy. (Incl. #13)	1
13	631022	Clip, Inlet Needle	1

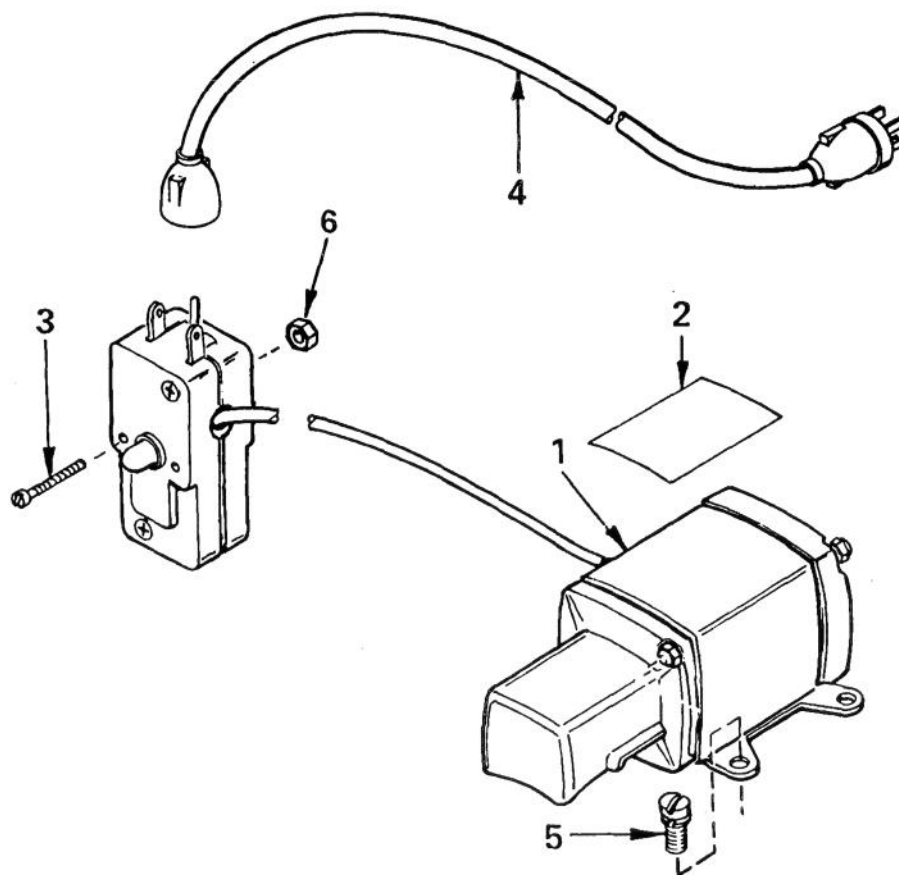
Ref. No.	Part No.	Description	No. Used
14	632019	Float, Carburetor	1
15	*631024	Shaft, Float	1
16	631867	Bowl, Float	1
21	27110	Gasket, Bowl-to-Body	1
22	*31839	Adjustment Screw Assy., Main (Incl. #21, 23, 30 & 31)	1
23	*630740	"O" Ring, Adjustment Screw	2
24	*631078	Screw, Idle Adjustment	1
25	*631028	Gasket, Bowl-to-Body	1
26	631807	Fitting, Fuel Inlet	1
30	630738	Spring, Main Adjustment Screw	1
31	630739	Washer, Flat	2
32	31840	Repair Kit (Incl. Items Marked *)	1



REWIND STARTER NO. 590473

Ref. No.	Part No.	Description	No. Used
1	590409A	Screw	1
2	590474	Cam, Dog	1
3	590411	Spring, Brake	1
4	590148	Dog, Starter	1
5	590475	Spring, Dog	1
6	590478	Pulley	1
7	590414	Spring & Keeper Assembly	1

Ref. No.	Part No.	Description	No. Used
8	590415	Housing Assembly, Starter (Incl. #1)	1
9	590451A	Rope, Starter	1
10	590387	Handle, Assembly, Starter	1
11	590459	Pin, Centering	1
12	590476	Retainer, Dog	1
13	590477	Screw	1

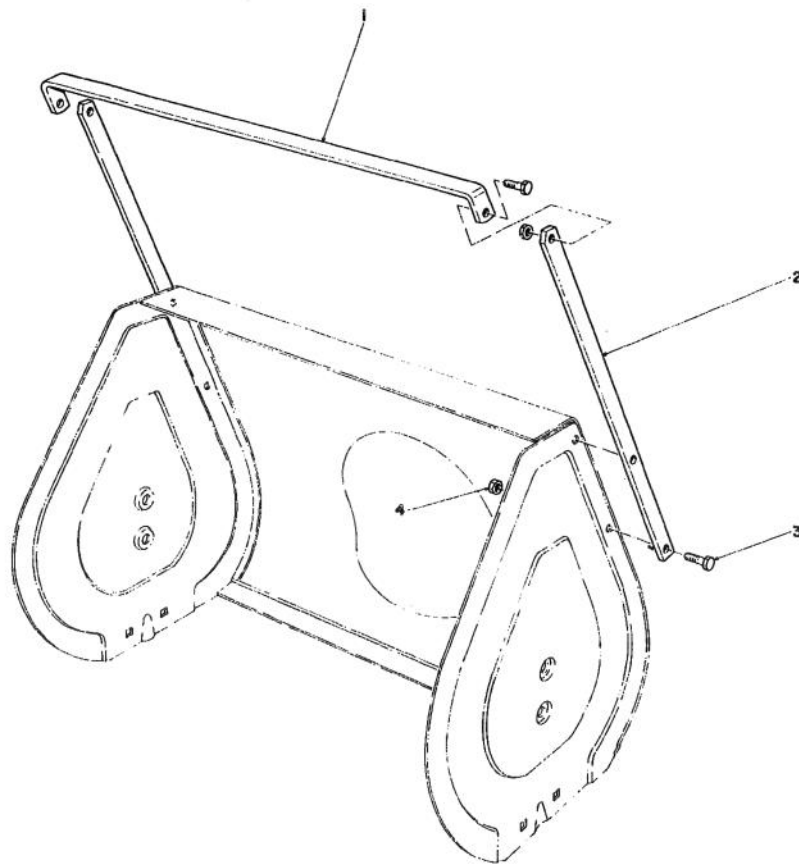


STARTER MOTOR KIT MODEL 23-3790

Ref. No.	Part No.	Description	No. Used
1†	33517A	Motor, Cranking (CSA Approved) (Incl. #2 thru 6)	1
2†	34161	Decal	1
3†	650741	Screw, Hex Hd. Self Tap	2

Ref. No.	Part No.	Description	No. Used
4†	32450A	Cord, Extension	1
5†	650759	Screw, Hex Washer Hd.	3
6†	650742	Nut & Lockwasher	2

†Note: Obtain individual replacement parts from your local Tecumseh Dealer.



DRIFT BREAKER KIT NO. 37-7020

Ref. No.	Part No.	Description	No. Used
1	38-0760	Drift Breaker — Top	1
2	38-0750	Drift Breaker — Side	2

Ref. No.	Part No.	Description	No. Used
3	322-4	Capscrew	6
4	3296-29	Locknut	6