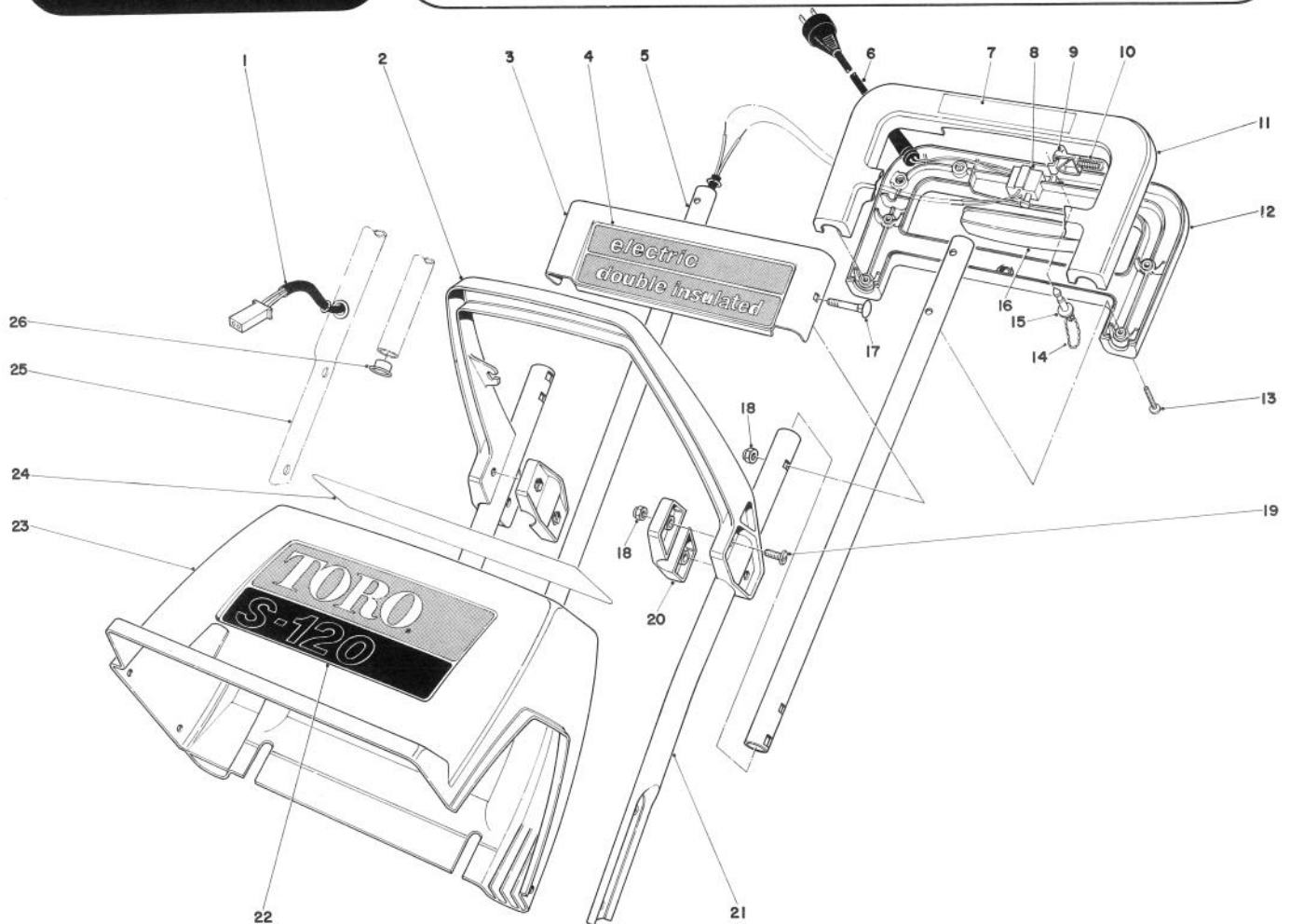


MODEL NO. 38000-0000001
THRU 1000001 & UP

PARTS CATALOG

TORO S-120 SNOWTHROWER

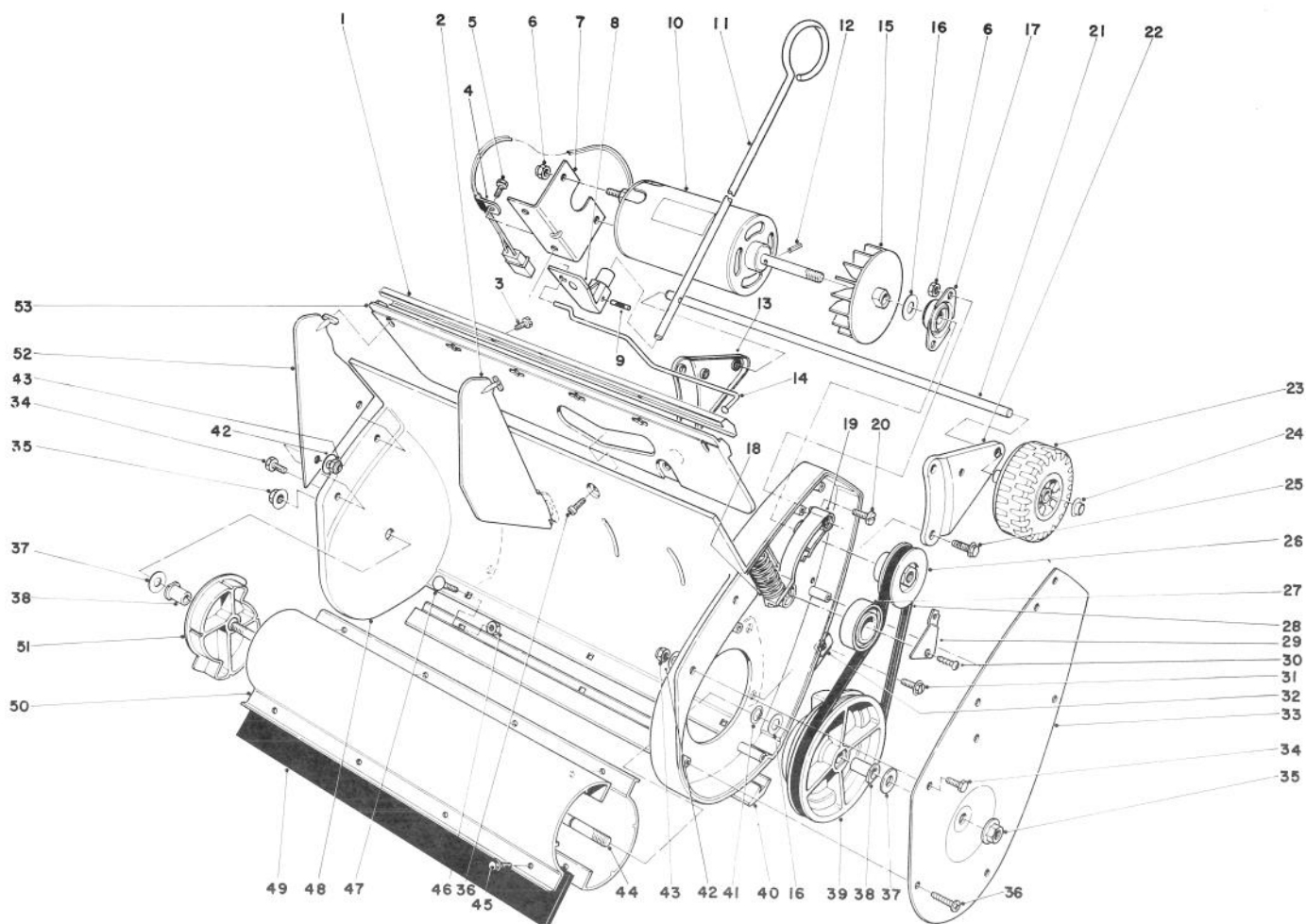


HANDLE ASSEMBLY

| Ref. No. | Part No. | Description | No. Used |
|----------|-----------|------------------------|----------|
| 1 | 37-6450 | Wire Harness | 1 |
| 2 | 37-6260 | Middle Handle | 1 |
| 3 | 37-6410 | Escutcheon Plate | 1 |
| 4 | 37-6480 | Decal — Electric | 1 |
| 5 | 37-6440 | Upper Tube | 2 |
| 6 | 38-8390 | Cord Supply | 1 |
| 7 | 38-4590 | Decal — Handle | 1 |
| 8 | 36-8340 | Switch | 1 |
| 9 | 37-8000 | Lockout — Switch | 1 |
| 10 | 37-7990 | Spring Compression | 1 |
| 11 | 39-2460 | Handle — Upper Control | 1 |
| 12 | 39-2470 | Handle — Lower Control | 1 |
| 13 | 32104-121 | Screw | 8 |
| 14 | | Key Chain | 1 |

| Ref. No. | Part No. | Description | No. Used |
|----------|----------|----------------------------|----------|
| 15 | 37-8020 | Key | 1 |
| 16 | 37-8010 | Switch Bar | 1 |
| 17 | 37-6320 | Carriage Bolt | 2 |
| 18 | 3296-42 | Nut | 6 |
| 19 | 3290-133 | Screw — Round Head | 4 |
| 20 | 37-6190 | Clamp — Middle Handle | 2 |
| 21 | 37-6430 | Handle — Lower L.H. | 1 |
| 22 | 37-6470 | Decal — Toro S-120 | 1 |
| 23 | 37-6210 | Shroud — S-120 | 1 |
| 24 | 38-5800 | Decal — U.L. | 1 |
| 25 | 37-6420 | Handle — Lower R.H. | 1 |
| 26 | 237-120 | Snap Bushing | 1 |
| * | 37-5950 | 100' Deluxe Extension Cord | 1 |

*Not Illustrated



LOWER MAIN FRAME ASSEMBLY

| Ref. No. | Part No. | Description | No. Used |
|----------|-----------|---------------------------|----------|
| 1 | 37-6340 | Moulding | 1 |
| 2 | 37-6170 | Vane — Inner | 4 |
| 3 | 32104-77 | Screw | 2 |
| 4 | 2412-72 | Insulated Closed Clip | 1 |
| 5 | 32104-124 | Screw | 2 |
| 6 | 3296-42 | Nut | 4 |
| 7 | 37-6380 | Bracket — Mounting | 1 |
| 8 | 39-3130 | Bracket — Vane Adjustment | 1 |
| 9 | 3284-4 | Groove Pin | 1 |
| 10 | 37-6100 | Motor | 1 |
| 11 | 39-3140 | Rod — Vane Adjustment | 1 |
| 12 | 32121-101 | Spring Pin | 1 |
| 13 | 39-0680 | Wheel Bracket R.H. | 1 |
| 14 | 37-5970 | Linkage Vane Adjustment | 1 |
| 15 | 37-6120 | Fan | 1 |
| 16 | 37-8080 | Thrust Washer | 2 |
| 17 | 37-6300 | Side Flange Bearing | 1 |
| 18 | 39-2190 | Idler Spring | 1 |
| 19 | 39-2170 | Idler Arm | 1 |
| 20 | 25-3120 | Screw | 2 |
| 21 | 37-6460 | Axle Shaft | 1 |
| 22 | 39-0690 | Wheel Bracket L.H. | 1 |
| 23 | 37-5960 | Wheel | 2 |
| 24 | 32112-1 | Push Nut | 2 |
| 25 | 11-9760 | Screw | 6 |
| 26 | 37-6040 | Drive Pulley | 1 |
| 27 | 36-7420 | Ball Bearing | 1 |

| Ref. No. | Part No. | Description | No. Used |
|----------|-----------|-------------------------|----------|
| 28 | 37-6010 | Drive Belt | 1 |
| 29 | 39-2180 | Retainer — Idler Pulley | 1 |
| 30 | 32104-130 | Screw | 2 |
| 31 | 32104-76 | Screw | 3 |
| 32 | 3290-171 | Tinnerman Nut | 3 |
| 33 | 37-6400 | Cover — Belt Case | 1 |
| 34 | 3290-321 | Screw | 4 |
| 35 | 32128-25 | Nut | 2 |
| 36 | 32104-121 | Screw | 7 |
| 37 | 39-5190 | Thrust Washer | 2 |
| 38 | 37-6070 | Rotor Bushing | 2 |
| 39 | 37-6050 | Pulley — Driven | 1 |
| 40 | 38-8720 | Scraper | 1 |
| 41 | 32120-46 | Retaining Ring | 1 |
| 42 | 38-5710 | Washer | 4 |
| 43 | 3296-2 | Nut | 4 |
| 44 | 37-6330 | Shaft — Rotor | 1 |
| 45 | 37-0370 | Screw — Thread Forming | 8 |
| 46 | 32149-2 | Nut | 3 |
| 47 | 3229-11 | Carriage Bolt | 3 |
| 48 | 39-2580 | Housing | 1 |
| 49 | 37-6390 | Blade — Rotor | 2 |
| 50 | 37-6370 | Rotor | 2 |
| 51 | 37-6060 | End Cap Rotor | 1 |
| 52 | 37-6140 | Vane — Outer | 2 |
| 53 | 37-6270 | Vane — Mount | 1 |

The Toro Promise

TORO S-120 SNOWTHROWER A FULL ONE YEAR WARRANTY

The Toro Company promises to repair any TORO S-120 Snowthrower if defective in materials or workmanship. The following time periods from the date of purchase apply:

Residential 1 Year
Residential Products Used Commercially . . . 45 Days

The cost of parts and labor are included, but the customer pays the transportation costs. Just return any residential product to an Authorized TORO Service Dealer.

Should you feel your TORO S-120 Snowthrower is defective and wish to rely on The Toro Promise, the following procedure is recommended:

1. Contact any Authorized TORO Service Dealer, TORO Master Service Dealer, or TORO Distributor (the Yellow Pages of your telephone directory is a good reference source).
2. He will instruct you to either return the product to him or recommend another Authorized TORO Service outlet which might be more convenient.
3. Bring the product along with your original sales slip, or other evidence of purchase date, to the service dealer.
4. The servicing dealer will inspect the unit, advise you whether the product is defective and, if so, make all repairs necessary to correct the defect without extra charge to you.

If for any reason you are dissatisfied with the dealer's analysis of the defect or the service performed, you may contact us.

Write:

TORO Consumer Service Department
8111 Lyndale Avenue South
Minneapolis, Minnesota 55420

THERE IS NO OTHER EXPRESS WARRANTY.

THE TORO COMPANY IS NOT LIABLE FOR INDIRECT OR CONSEQUENTIAL DAMAGES IN CONNECTION WITH THE USE OF THE PRODUCT.

Some states do not allow the exclusion or limitation of incidental or consequential damages, so the above limitation or exclusion may not apply to you.

This Warranty applies only to parts or components which are defective and does not cover repairs necessary due to normal wear, misuse, accidents, or lack of proper maintenance. Regular, routine maintenance of the unit to keep it in proper operating condition is the responsibility of the owner.

All warranty repairs reimbursable under The Toro Promise must be performed by an Authorized TORO Service Dealer using Toro approved replacement parts.

Repairs or attempted repairs by anyone other than an Authorized TORO Service Account are not reimbursable under The Toro Promise. In addition, these unauthorized repair attempts may result in additional malfunctions, the correction of which is not covered by warranty.

This warranty gives you specific legal rights, and you may also have other rights which vary from state to state.

COUNTRIES OTHER THAN THE UNITED STATES OR CANADA

Customers who have purchased TORO products exported from the United States or Canada should contact their TORO Distributor (Dealer) to obtain guarantee policies for your country, province or state. If for any reason you are dissatisfied with your Distributor's service or have difficulty obtaining guarantee information, contact

the TORO importer. If all other remedies fail, you may contact us at The Toro Company.

International Group
Service Department
One Corporate Center
7401 Metro Boulevard
Minneapolis, Minnesota 55435 U.S.A.

PRODUCT CHANGES

In an effort to make improvements available to TORO owners as quickly as possible, minor changes are incorporated into Toro's products from time to time that do not become immediately shown in the Parts Catalog. If such a change apparently has been made in your unit, which is not reflected in your manual, see your TORO Distributor or his Authorized TORO Service Dealer for information and part numbers.

IDENTIFICATION AND ORDERING

Model and Serial Numbers

The S-120, has two identification numbers. A model number and a serial number. The two numbers are stamped on a decal which is located on lower right handle. In any correspondence concerning the S-120, supply model and serial numbers to assure that correct information and replacement parts are obtained.

To order replacement parts from an Authorized TORO Service Dealer, supply the following information:

1. Model and serial numbers of the S-120.
2. Part number, description, and quantity of part(s) desired.

Note: Do not order by reference number if a parts catalog is being used; use the PART NUMBER.

Keep Your TORO All Toro



Insist on Genuine Toro Parts

MAINTENANCE RECORD

[illegible]