



Rear Roller Brush Kit

Reelmaster[®] 5500–D, 6500–D and 6700–D

Model No. 03875

Patent Pending

Parts Catalog

Ordering Replacement Parts

To order replacement parts, please supply: the part number, the quantity, and the description of each part desired.

Understanding Reference Numbers

Each identified part in an illustration has a reference number. The reference number for a part also appears in the parts list, along with other information about the part.

This catalog uses two special reference number formats, one to indicate parts in a service assembly and another to indicate the quantity of a given part in an illustration.

Service Assembly Reference Numbers

Parts in service assemblies have reference numbers in the form **a:b**. The **a** represents the reference number of the entire service assembly and the **b** represents a sequential number unique to each part within the service assembly.

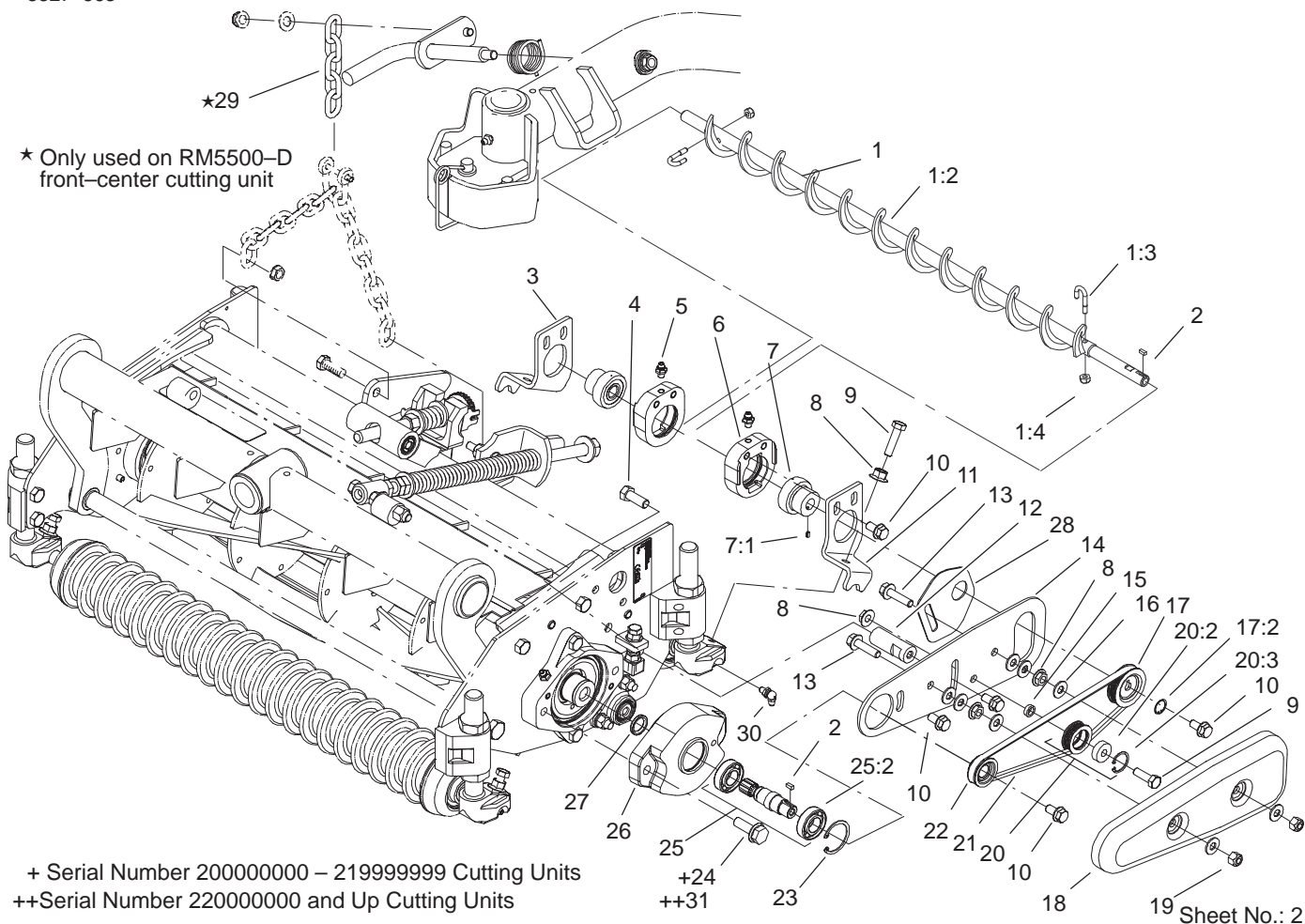
For example, a wheel assembly might be identified by reference number **6**, the tire by **6:1**, the valve by **6:2**, and the wheel by **6:3**. When you order the assembly identified by reference number **6**, you receive all parts identified by reference numbers **6:1**, **6:2**, and **6:3**. However, you may also order any part individually.

Reference numbers of this type appear in illustrations and in part lists.

Reference Numbers Indicating Quantity

In an illustration, if a reference number indicates more than one part, the reference number has the form **nX y**. The **n** represents the quantity of the part, the **X** is the multiplication symbol, and the **y** represents the reference number.

For example, in an illustration, the reference number **2X 37** means that two of the parts identified by reference number **37** are indicated.



Rear Roller Brush Assembly

Ref. No.	Part No.	Qty.	Description
1	99-8482	1	Roller Brush Shaft ASM
1:2	104-1829	1	Brush-Roller
1:3	104-1830	2	Bolt-J
1:4	3296-2	2	Nut-Lock
2	95-9619	2	Key-Square
3	104-1823	1	Bracket-Brush, RH
4	323-6	1	Screw-HH
5	302-5	2	Fitting-Grease
6	104-8202	2	Housing-Bearing, Roller Brush
7	104-1842	2	Bearing-Roller W/Collar
7:1	3245-1	1	Screw-Set, HSH
8	32128-20	5	Nut-HF
9	322-5	3	Screw-HH
10	3234-14	8	Screw-HHF
11	104-1824	1	Bracket-Brush, LH
12	104-1837	1	Spacer-Threaded
13	3234-36	2	Screw-HHF
14	104-1825	1	Plate-Brush
15	82-4240	1	Spacer-Bearing
16	87-8640	8	Washer-Flat
17	105-0180	1	Driven Pulley ASM
17:2	105-0179	1	Ring-Retaining
18	104-1819	1	Cover-Belt

Ref. No.	Part No.	Qty.	Description
19	3296-29	2	Nut-Lock, NI
20	104-1834	1	Idler Bearing ASM
20:2	251-259	1	Bearing
20:3	104-4727	1	Ring-Retaining
21	99-8484	1	Belt-Drive
22	99-8468	1	Pulley-Drive
23	32151-34	1	Ring-Retaining
24	33105-030	2	Screw-HHF
25	104-1833	1	Drive Shaft ASM
25:2	98-5215	2	Bearing-Ball, Radial
26	99-8475	1	Housing-Brush, Roller
27	253-83	1	Seal-Oil
28	104-8201	1	Plate-Guard
29	84-2451	1	Chain-Link, Straight
30	104-1843	1	Fitting-Grease, 90°
31	3234-24	2	Screw-HHF