



Fender and Rear Discharge Completion Kit

Groundsmaster® 7200 Series Traction Unit with 62in or 72in Mower

Model No. 30469

Model No. 30472

Installation Instructions

This product complies with all relevant European directives. For details, please see the Declaration of Incorporation (DOI) at the back of this publication.

The 62-inch Rear Discharge Completion Kit (Model 30469) can be installed on the following Groundsmaster 7200 Series Traction Units with 62-inch Mowers:

- 30365
- 30362
- 30462
- 30465
- 30465N
- 30495 (with 30457)
- 30487 (with 30457)
- 30695 (with 30457)

The 72-inch Rear Discharge Completion Kit (Model 30472) can be installed on the following

Groundsmaster 7200 Series Traction Units with 72-inch Mowers:

- 30361
- 30364
- 30364TC
- 30461
- 30464
- 30464TC
- 30464N
- 30495 (with 30353)
- 30487 (with 30353)
- 30695 (with 30353)

Loose Parts

Use the chart below to verify that all parts have been shipped.

Description	Qty.	Use
No parts required	—	Remove the existing recycling baffle from the cutting unit.
Nut (5/16 inch)	36	Install the rear discharge completion kit (for 62-inch decks).
Carriage bolt (5/16 x 3/4 inch)	28	
Carriage bolt (5/16 x 7/8 inch)	8	
Left foot shield	1	
Right foot shield	1	
Deflector	1	
Rear angle	2	
Support strap	2	
Left chamber	1	
Center chamber	1	
Right chamber	1	
Blade	3	
Anti-scalp cup	3	
Blade bolt	3	
Identification decal	1	



Description	Qty.	Use
Nut (5/16 inch)	36	Installing the rear discharge completion kit (for 72-inch decks).
Carriage bolt (5/16 x 3/4 inch)	24	
Carriage bolt (5/16 x 7/8 inch)	10	
Left foot shield	1	
Right foot shield	1	
Deflector	1	
Rear angle	2	
Support strap	2	
Left chamber	1	
Center chamber	1	
Right chamber	1	
Left deflector	1	
Washer	2	
Bolt (5/16 x 3/4 inch)	2	
Blade	3	
Anti-scalp cup	3	
Blade bolt	3	
ID decal	1	
Fender mount	1	Install the right fender.
Right fender	1	
Thread-forming screw (5/16 x 5/8 inch)	2	
Bolt (1/4 x 5/8 inch)	2	
Nut (1/4 inch)	2	
Left fender	1	Install the left fender.
Nut (3/8 inch)	2	
Bolt (3/8 x 3/4 inch)	2	

Removing the Existing Recycling Baffles from the Cutting Unit

⚠ DANGER

If you raise the machine using only a jack to support it while you work under the mower deck, the jack could tip, causing the mower deck to fall, crushing you or bystanders.

Always secure the machine with at least 2 jack stands when you have the mower deck raised.

Note: This procedure is not required on models shipped without the cutting unit baffles installed.

1. Disengage the PTO, move the motion-control levers to the NEUTRAL-LOCKED position and engage the parking brake.
2. Move the throttle lever to the SLOW position, shut off the engine, remove the key, and wait for all moving parts to stop before leaving the operating position.
3. Remove the nut, bolt, and spacer securing the deck roller to the mounting bracket, and remove the deck roller ([Figure 1](#)).
4. Remove the carriage bolts and nuts securing the roller-mounting bracket to the underside of the mower deck, and remove the roller-mounting bracket ([Figure 1](#)).
5. Remove the carriage bolts and nuts securing the center, left, and right baffles to the underside of the mower deck, and remove the baffles ([Figure 1](#)).

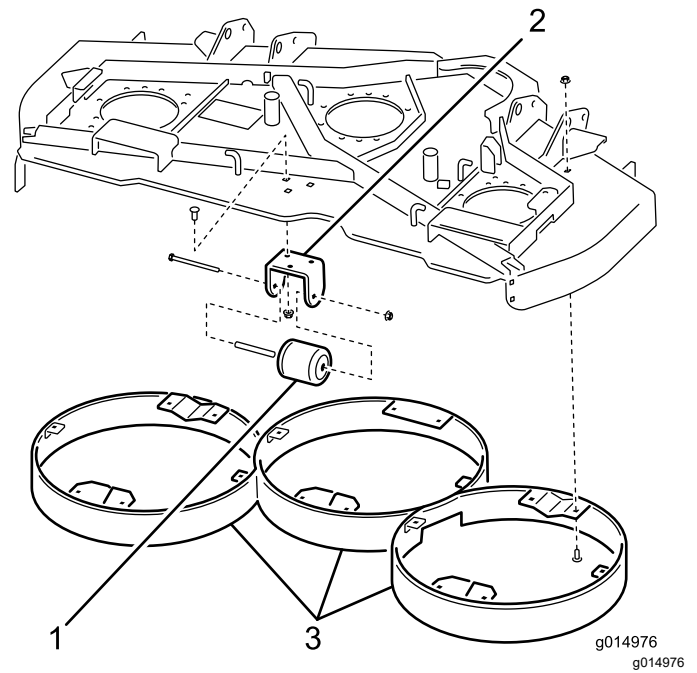


Figure 1

62-inch mower deck shown

- | | |
|----------------------------|-----------|
| 1. Deck roller | 3. Baffle |
| 2. Roller-mounting bracket | |

Installing the Rear Discharge Completion Kit

62-Inch Decks Only

1. Loosely mount the new chambers to the underside of the mower deck with 12 carriage bolts (5/16 x 3/4 inch) and 12 nuts (5/16 inch).

Note: Each chamber should have 4 sets of nuts and bolts. Position the bolt heads inside the mower deck. Position the chambers as shown in [Figure 2](#).

Note: If a required mounting hole is not present in the mower deck, use the new component as a template to locate, mark, and drill the holes (0.354-inch diameter). Only 4 holes per chamber are used.

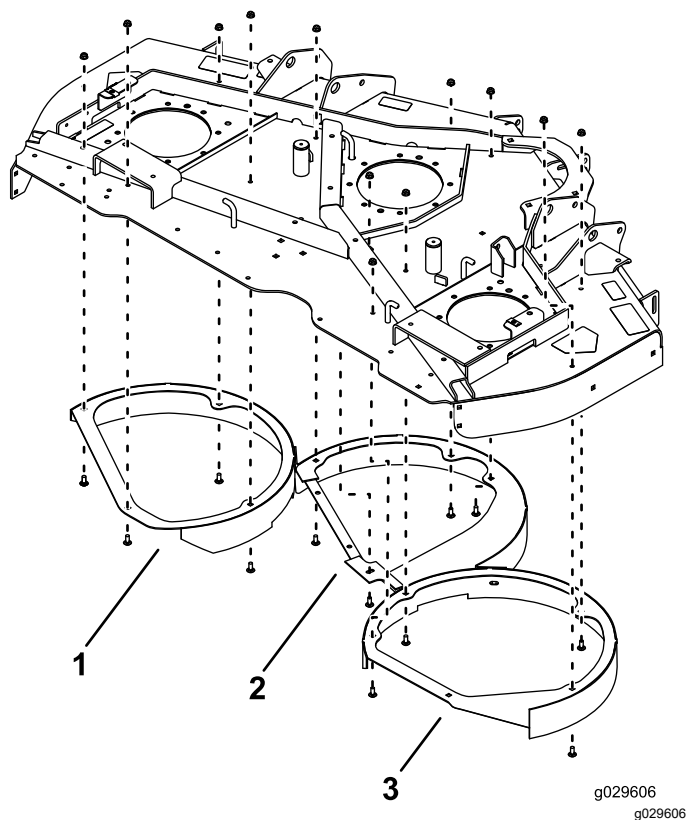


Figure 2

1. Left chamber
2. Center chamber
3. Right chamber

2. Loosely mount the left and right chambers to the center chamber with 2 carriage bolts (5/16 x 3/4 inch) and 2 nuts (5/16 inch) as shown in [Figure 3](#).

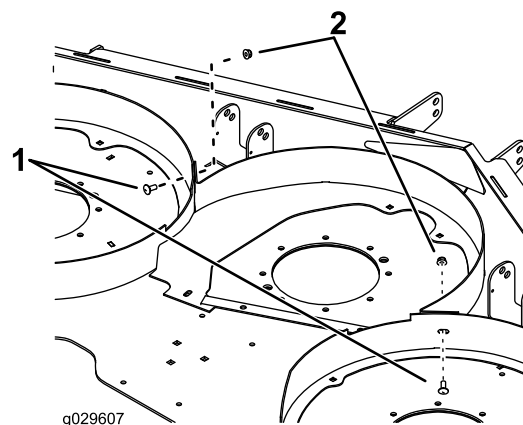


Figure 3

1. Carriage bolt
2. Nut

3. Tighten all fasteners.
4. Mount the 2 support straps and the deflector to the 2 rear angles with 8 carriage bolts (5/16 x 7/8 inch) and 8 nuts (5/16 inch) as shown in [Figure 3](#).

Note: Position the bolt heads next to the rear angle.

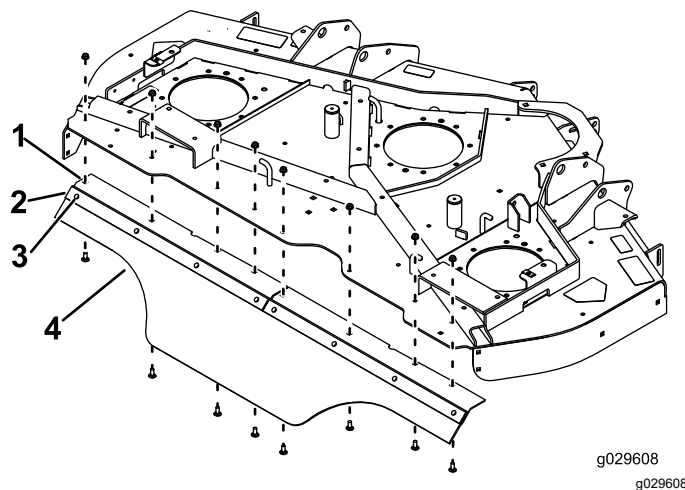
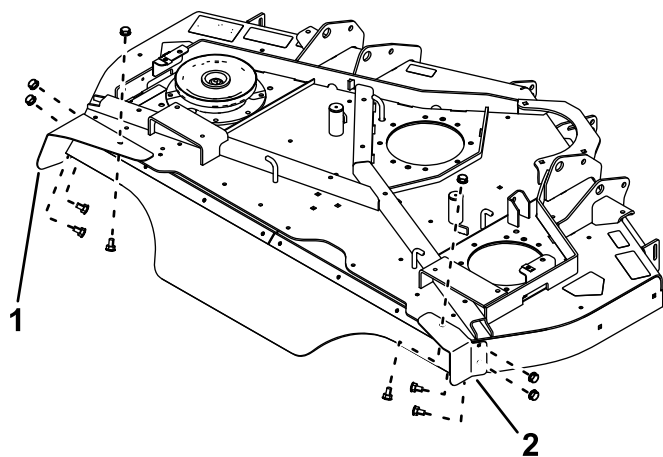


Figure 4

1. Rear angle
2. Carriage bolt with nut
3. Support strap
4. Deflector

5. Mount the rear angles with deflectors to the rear mower deck with 8 carriage bolts (5/16 x 7/8 inch) and 8 nuts (5/16 inch) as shown in [Figure 4](#).
6. Mount the right foot shield to the top and side of the mower deck with 3 carriage bolts (5/16 x 3/4 inch) and 3 nuts (5/16 inch) as shown in [Figure 5](#).



g029609

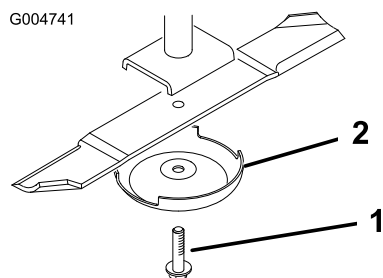
g029609

Figure 5

1. Left foot shield
2. Right foot shield

7. Mount the left foot shield to the top and side of the mower deck with 3 carriage bolts (5/16 x 3/4 inch) and 3 nuts (5/16 inch) as shown in [Figure 5](#).
8. Install the blades, anti-scalp cups, and blade bolts ([Figure 6](#)).

Important: The curved part of the blade must point toward the top of the cutting unit to ensure proper cutting.

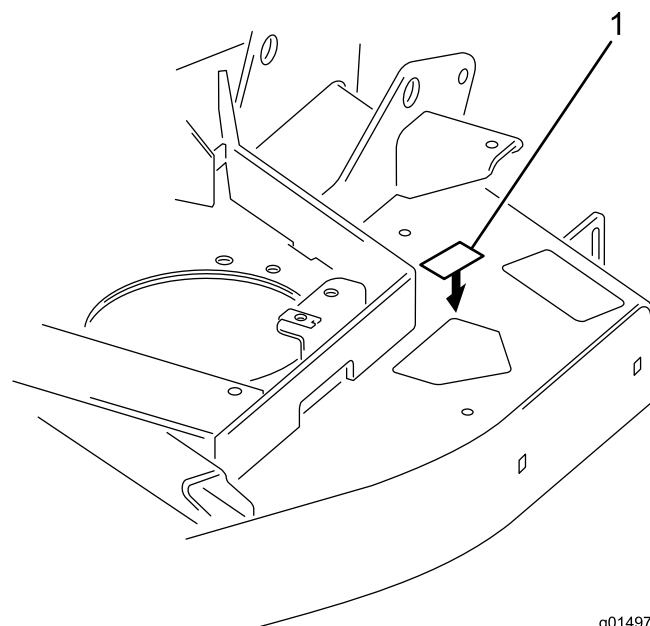


G004741

g004741

Figure 6

1. Blade bolt
2. Anti-scalp cup



g014978

g014978

Figure 7

1. Identification decal

9. Tighten the blade bolts to 115 to 149 N-m (85 to 110 ft-lb).
10. Rotate the blades to ensure that there is no interference
11. Tighten all fasteners.
12. Affix an identification decal to the top of the mower deck near the serial plate ([Figure 7](#)).

Note: Make sure that the mounting surface is clean.

Installing the Rear Discharge Completion Kit (for 72-inch Decks)

72-Inch Decks Only

1. Loosely mount the new chambers to the underside of the mower deck with 12 carriage bolts (5/16 x 3/4 inch) carriage bolts and 12 nuts (5/16 inch).

Note: Each chamber will have 4 sets of nuts and bolts. Position the bolt heads inside the mower deck. Position the chambers as shown in [Figure 8](#).

Note: If a required mounting hole is not present in the mower deck, use the new component as a template to locate, mark, and drill the holes (0.354-inch diameter). Only 4 holes per chamber are used.

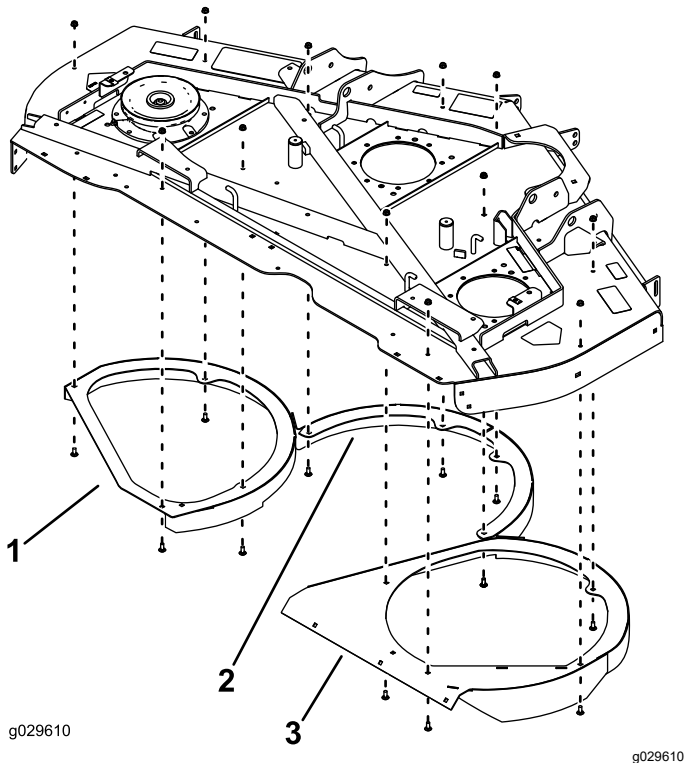


Figure 8

1. Left chamber
2. Center chamber
3. Right chamber

2. Loosely mount the left and right chambers to the center chamber with 2 carriage bolts (5/16 x 3/4 inch) and 2 nuts (5/16 inch) as shown in [Figure 9](#).

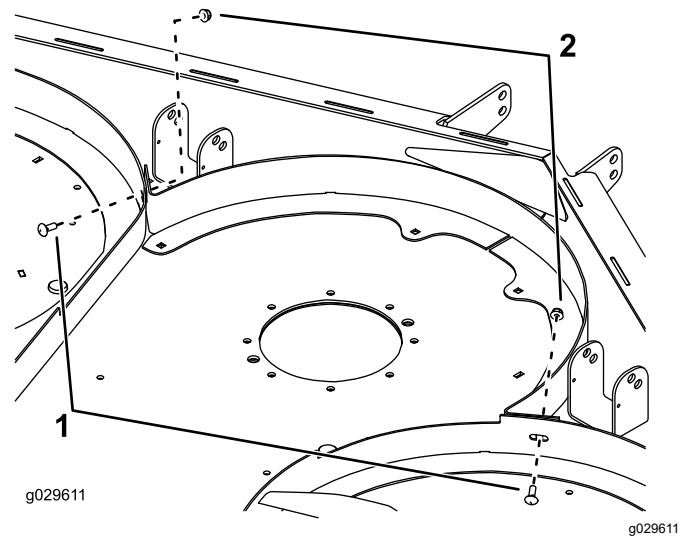


Figure 9

1. Carriage bolt
2. Nut

3. Loosely mount a support strap and the left (angled) end of the deflector to the rear angle with 4 carriage bolts (5/16 x 7/8 inch) and 4 nuts (5/16 inch) as shown in [Figure 10](#).

Note: Position the bolt heads next to the rear angle.

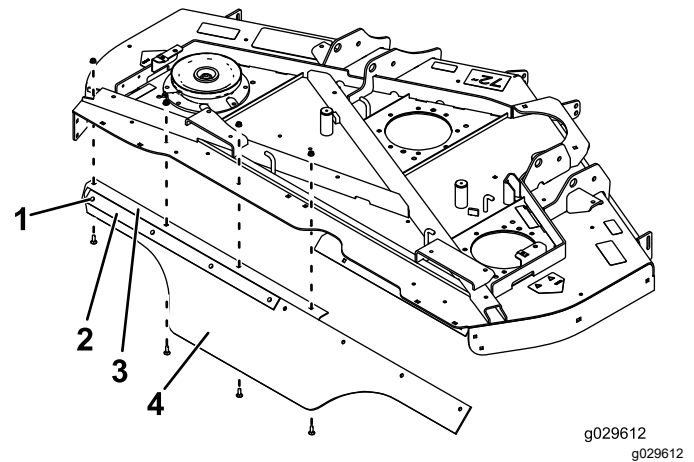


Figure 10

1. Carriage bolt with nut
2. Support strap
3. Rear angle
4. Deflector

4. Loosely mount the rear angle with the deflector to the mower deck with 4 carriage bolts (5/16 x 7/8 inch) and 4 nuts (5/16 inch) as shown in [Figure 10](#).

5. Loosely mount a support strap and the right (square) end of the deflector to the right chamber with 4 carriage bolts (5/16 x 7/8 inch) and 4 nuts (5/16 inch) as shown in [Figure 11](#).

Note: Position the bolt heads in the chamber.

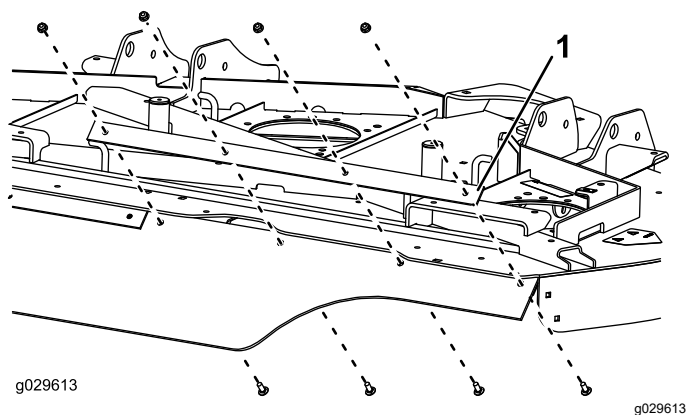


Figure 11

1. Support strap

6. Tighten all fasteners.
7. Mount the right foot shield to the top and side of the mower deck with 4 carriage bolts (5/16 x 3/4 inch) carriage bolts and 4 nuts (5/16 inch) as shown in [Figure 12](#).

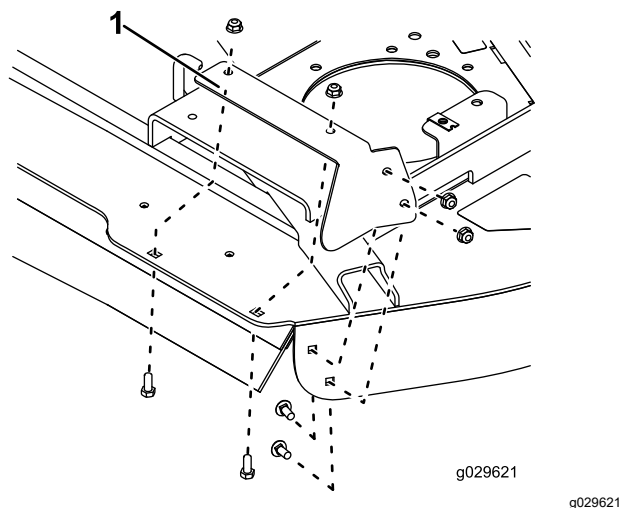


Figure 12

1. Right foot shield

8. Mount the left foot shield and a deflector to the top and side of the mower deck with 2 carriage bolts (5/16 x 7/8 inch), 2 carriage bolts (5/16 x 3/4 inch), 2 washers, and 4 nuts (5/16 inch) as shown in [Figure 13](#).

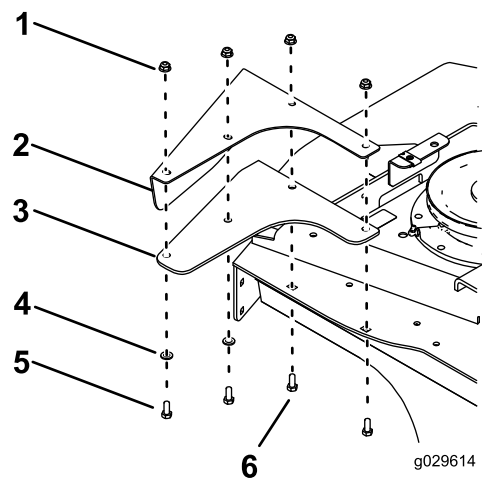


Figure 13

- | | |
|---------------------|------------------|
| 1. Nut | 4. Washer |
| 2. Left foot shield | 5. Capscrew |
| 3. Deflector | 6. Carriage bolt |

9. Install the blades, anti-scalp cups, and blade bolts ([Figure 14](#)).

Important: The curved part of the blade must point toward the top of the cutting unit to ensure proper cutting.

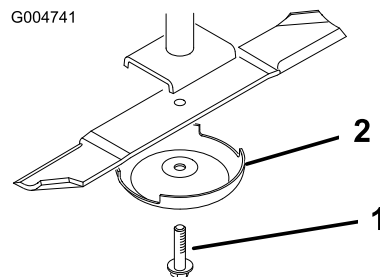


Figure 14

- | | |
|---------------|-------------------|
| 1. Blade bolt | 2. Anti-scalp cup |
|---------------|-------------------|

10. Tighten the blade bolts to 115 to 149 N-m (85 to 110 ft-lb).
11. Rotate the blades to make sure there is no interference.
12. Tighten all fasteners.
13. Affix an identification decal to the top of the mower deck near the serial plate ([Figure 15](#)).

Note: Ensure that the mounting surface is clean.

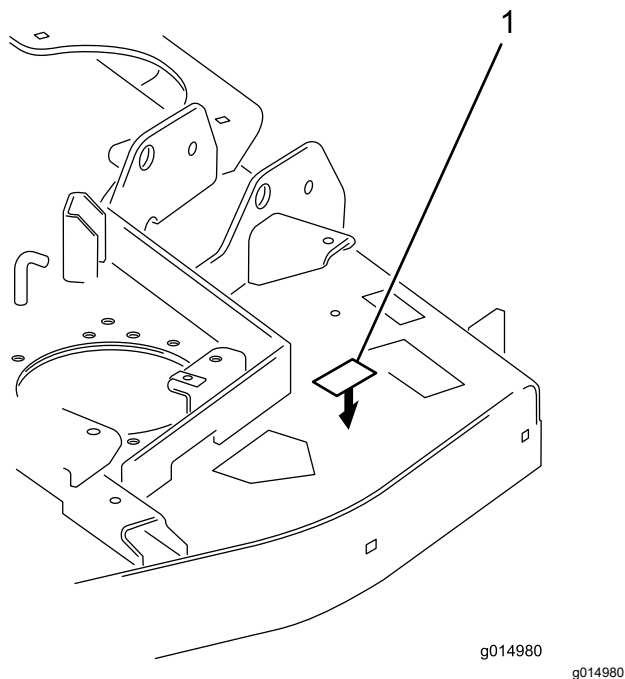


Figure 15

1. Identification decal

Installing the Right Fender

1. Position a suitable floor jack under the rear bumper tube and raise the rear tires off the ground (Figure 16).

Note: Position the jack stands under the rear bumper.

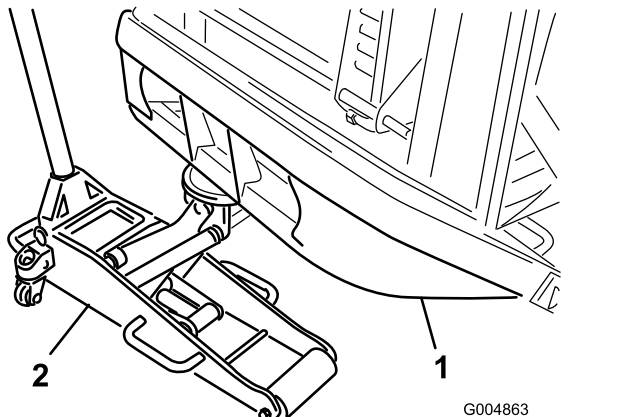


Figure 16

1. Rear bumper tube
2. Floor jack

2. Remove the rear wheels.
3. Remove all debris from the wheel-well area, including any debris caught in the brake assembly.

4. Remove the bolt securing the hose clamp to the frame channel on the right side of the machine (Figure 17).

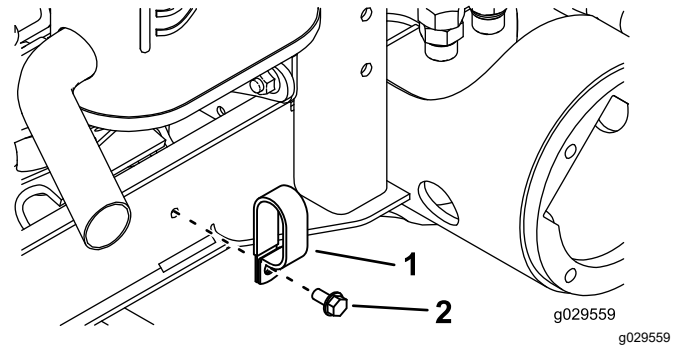


Figure 17

1. Hose clamp
2. Bolt

5. Insert the bottom of the hose clamp through the slot in the top of the fender mount (Figure 18).

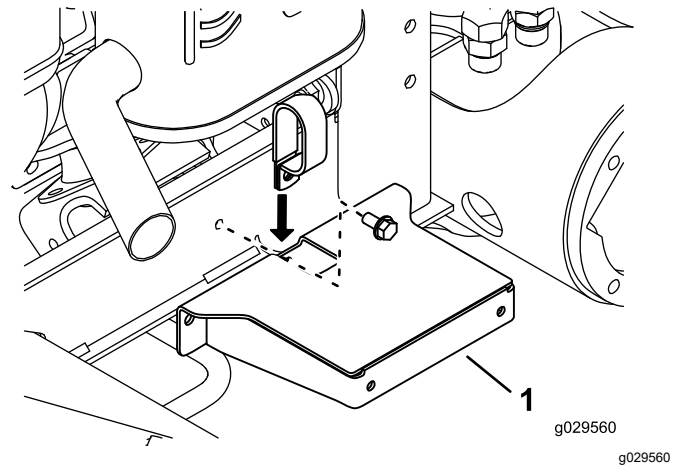


Figure 18

1. Fender mount

6. Loosely mount the hose clamp and fender mount to the frame channel with the bolt previously removed.
7. Position the frame mount horizontally on the frame channel.

8. Use the frame mount as a template to locate and mark the other 2 fender mounting holes in the frame channel ([Figure 19](#)).

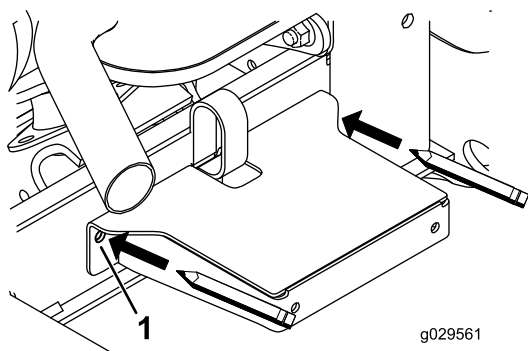


Figure 19

1. Mark here.

9. Remove the bolt and nut securing the clamp and fender mount to the frame.

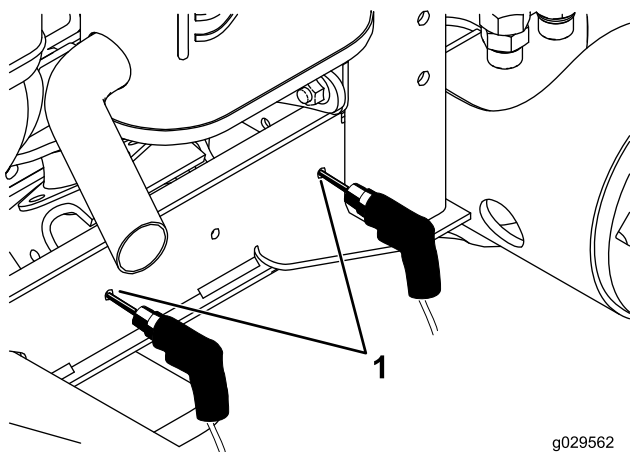


Figure 20

1. Drill here.

10. At the locations that you marked in step 8, drill 2 holes (0.281-inch diameter) through the frame channel ([Figure 20](#)).
11. Loosely mount the hose clamp and fender mount to the frame channel with the hose clamp, bolt, and nut (see [Figure 18](#)).

12. Using the newly drilled holes, secure the fender mount to the frame channel with 2 thread-forming screws (5/16 x 5/8 inch) as shown in [Figure 21](#).

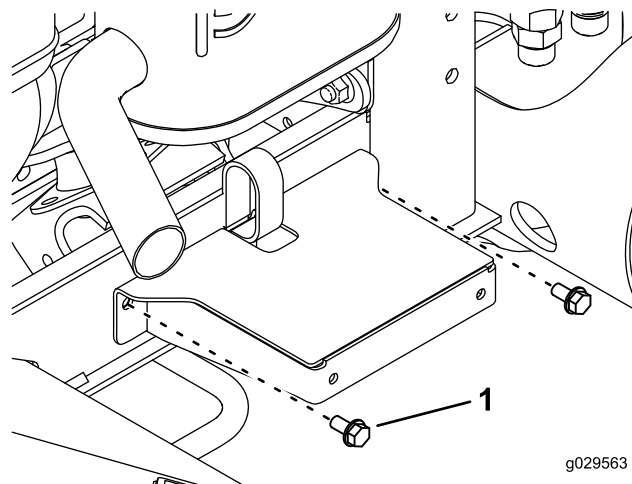


Figure 21

1. Thread-forming screw (5/16 x 5/8 inch)

13. Tighten all the fasteners.
14. Loosely mount the side of the right fender to the fender mount with 2 bolts (1/4 x 5/8 inch) and 2 nuts (1/4 inch) as shown in [Figure 22](#).

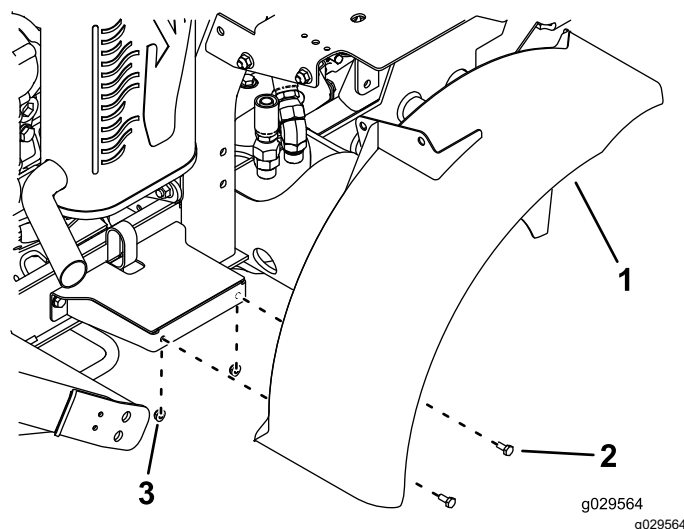


Figure 22

1. Right fender
2. Bolt (1/4 x 5/8 inch)
3. Nut (1/4 inch)

15. Loosely mount the bracket, on the top of the fender, to the fuel-tank bracket with 2 bolts (3/8 x 3/4 inch) and 2 nuts (3/8 inch) as shown in [Figure 22](#).

Note: Make sure that the fender is not rubbing on the brake rotor.

16. Tighten the fasteners.

Installing the Left Fender

1. Disconnect the cable from the negative terminal of the battery.
2. Disconnect the cable from the positive terminal of the battery.
3. Remove the carriage bolt, washer, battery hold-down, and nut securing the battery (Figure 23).

Note: Retain the hold-down and the fasteners.

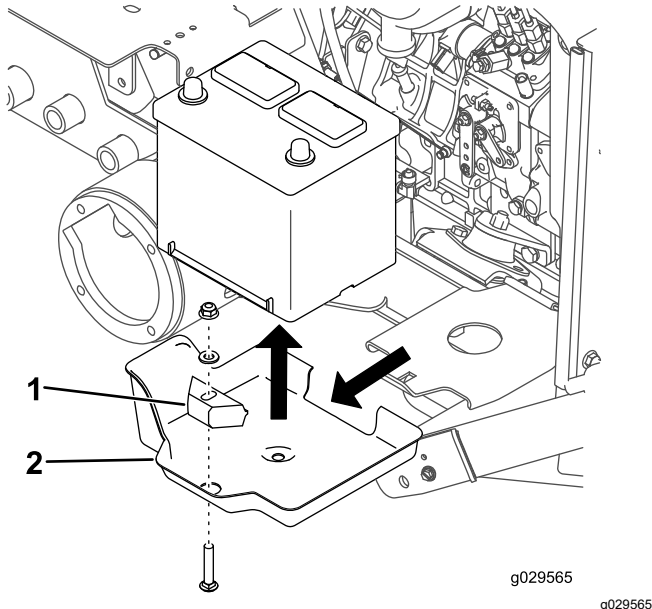


Figure 23

1. Battery hold-down
2. Battery tray

4. Remove the battery from the battery tray (Figure 23).
5. Remove the battery tray from the battery platform (Figure 23).

Note: Discard the battery tray.

6. Loosely mount the bracket on the top of the left fender to the fuel-tank bracket with 2 bolts (3/8 x 3/4 inch) and 2 nuts (3/8 inch) as shown in Figure 24.

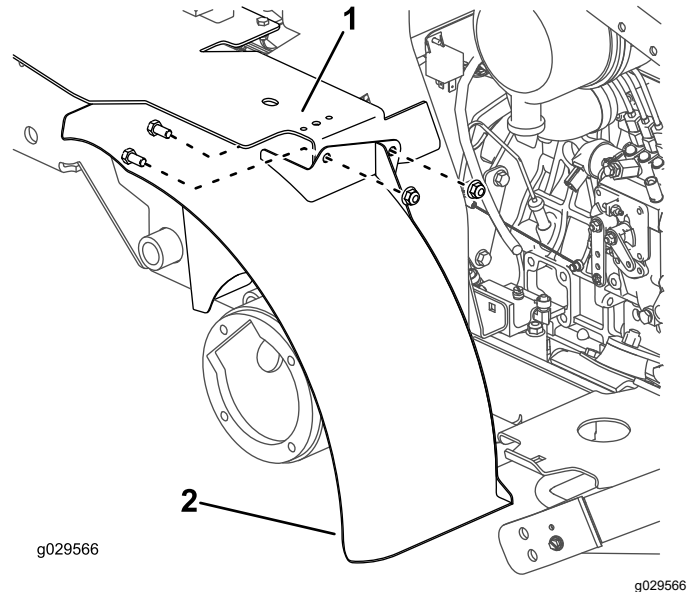


Figure 24

1. Fuel-tank bracket
2. Left fender

7. Position the battery onto the battery platform.
8. Loosely mount the battery to the battery platform with the carriage bolt, hold-down, washer, and nut that you previously removed (Figure 25).

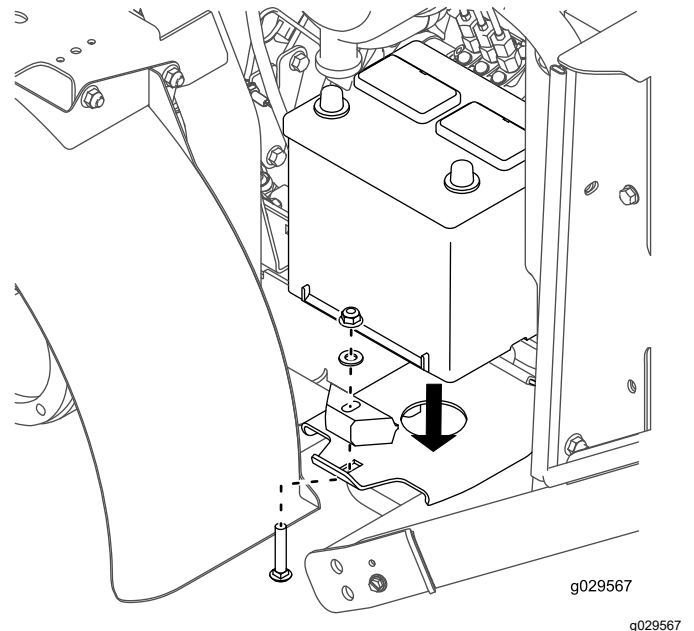


Figure 25

9. Tighten the fasteners.
10. Connect the positive battery cable to the battery, and then connect the negative battery cable to the battery.

11. Install the drive wheels.
12. Tighten the lug nuts to 102 to 115 N-m (75 to 85 ft-lb).
13. Remove the jack stands and lower the machine.

Note: Verify that the tires do not rub on the fenders when you drive the machine.

Notes:

Notes:

Notes:

Declaration of Incorporation

The Toro Company, 8111 Lyndale Ave. South, Bloomington, MN, USA declares that the following unit(s) conform(s) to the directives listed, when installed in accordance with the accompanying instructions onto certain Toro models as indicated on the relevant Declarations of Conformity.

Model No.	Serial No.	Product Description	Invoice Description	General Description	Directive
30469	—	Fender and Rear Discharge Completion Kit	62in RD BAFFLE KIT W/ WHEEL KIT	Fender and Rear Discharge Completion Kit	2006/42/EC, 2000/14/EC
30472	—	Fender and Rear Discharge Completion Kit	72in RD BAFFLE KIT W/ WHEEL KIT	Fender and Rear Discharge Completion Kit	2006/42/EC, 2000/14/EC

Relevant technical documentation has been compiled as required per Part B of Annex VII of 2006/42/EC.

We will undertake to transmit, in response to requests by national authorities, relevant information on this partly completed machinery. The method of transmission shall be electronic transmittal.

This machinery shall not be put into service until incorporated into approved Toro models as indicated on the associated Declaration of Conformity and in accordance with all instructions, whereby it can be declared in conformity with all relevant Directives.

Certified:



Tom Langworthy
Engineering Director
8111 Lyndale Ave. South
Bloomington, MN 55420, USA
October 3, 2022

Authorized Representative:

Marcel Dutrieux
Manager European Product Integrity
Toro Europe NV
Nijverheidsstraat 5
2260 Oevel
Belgium

UK Declaration of Incorporation

The Toro Company, 8111 Lyndale Ave. South, Bloomington, MN, USA declares that the following unit(s) conform(s) to the directives listed, when installed in accordance with the accompanying instructions onto certain Toro models as indicated on the relevant Declarations of Conformity.

Model No.	Serial No.	Product Description	Invoice Description	General Description	Regulation
30469	—	Fender and Rear Discharge Completion Kit	62in RD BAFFLE KIT W/ WHEEL KIT	Fender and Rear Discharge Completion Kit	S.I. 2008 No. 1597 (Machinery Safety), S.I. 2001 No. 1701 (Noise)
30472	—	Fender and Rear Discharge Completion Kit	72in RD BAFFLE KIT W/ WHEEL KIT	Fender and Rear Discharge Completion Kit	S.I. 2008 No. 1597 (Machinery Safety), S.I. 2001 No. 1701 (Noise)

Relevant technical documentation has been compiled as required per Schedule 10 of S.I. 2008 No. 1597.

We will undertake to transmit, in response to requests by national authorities, relevant information on this partly completed machinery. The method of transmission shall be electronic transmittal.

This machinery shall not be put into service until incorporated into approved Toro models as indicated on the associated Declaration of Conformity and in accordance with all instructions, whereby it can be declared in conformity with all relevant Directives.

This declaration has been issued under the sole responsibility of the manufacturer.
The object of the declaration is in conformity with relevant UK legislation.



Tom Langworthy
Engineering Director
8111 Lyndale Ave. South
Bloomington, MN 55420, USA
October 3, 2022

Authorized Representative:

Marcel Dutrieux
Manager European Product Integrity
Toro U.K. Limited
Spellbrook Lane West
Bishop's Stortford
CM23 4BU
United Kingdom