



Single Nozzle Kit

Multi-Pro Turf Sprayer

Model No. 41023

Form No. 3458-478 Rev A

Installation Instructions

Installation

Loose Parts

Use the chart below to verify that all parts have been shipped.

Procedure	Description	Qty.	Use
1	No parts required	—	Prepare the machine.
2	Hose clamp Straight fitting O-ring Ball valve Hose	3 3 3 1 1	Install the in-line hose assembly.
3	Pipe Boom cap Single nozzle plate Single nozzle strap Nozzle mount assembly Clamp assembly Hose-barb elbow Hose clamp Nozzle Plastic reducer Bolt Washer Flange nut	1 1 1 1 1 1 1 1 1 1 3 1 3	Mount the kit to the boom.



1

Preparing the Machine

No Parts Required

Procedure

⚠ CAUTION

Chemicals are hazardous and can cause personal injury.

- Read the directions on the chemical labels before handling the chemicals and follow all manufacturer recommendations and precautions.
- Keep chemicals away from your skin. Should contact occur, wash the affected area thoroughly with soap and clean water.
- Wear goggles and any other protective equipment recommended by the chemical manufacturer.

1. Move the machine to a level surface.
2. Fully press in the brake pedal and engage the parking brake.
3. Shut off the engine, and remove the key.
4. Clean the sprayer; refer to Cleaning the Sprayer in the *Operator's Manual* for the machine.

Note: Take caution while disconnecting any hoses during the installation of this kit and have a catch bucket ready for any solutions remaining in the hose.

2

Installing the In-Line Hose Assembly

Parts needed for this procedure:

3	Hose clamp
3	Straight fitting
3	O-ring
1	Ball valve
1	Hose

Procedure

1. Cut the RH boom supply hose 30 inches from the RH boom supply valve. (Figure 1).

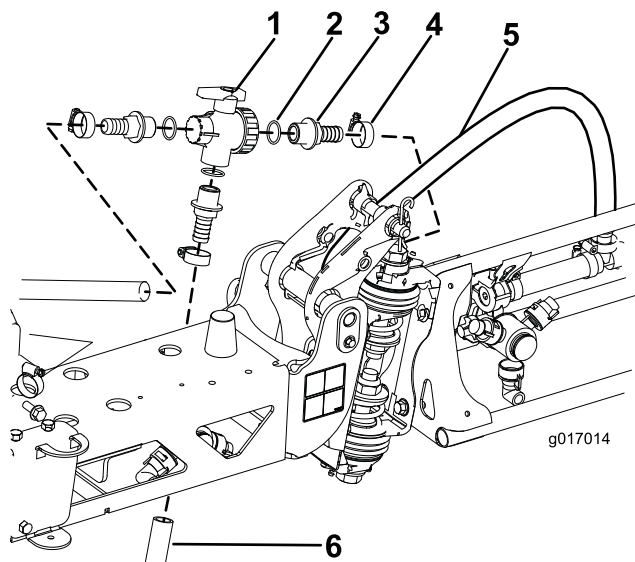


Figure 1

- | | |
|---------------------|------------------------------|
| 1. Ball valve | 4. Hose clamp |
| 2. O-ring | 5. RH boom supply hose |
| 3. Straight fitting | 6. Single nozzle supply hose |

2. Place an O-ring into each opening of the ball valve (Figure 1).
3. Attach 3 straight fittings to the ball valve (Figure 1).
4. Secure the split agitation hose to the ball valve assembly with 2 hose clamps, then secure the hose included with the kit to the bottom barb fitting on the ball valve assembly with a hose clamp (Figure 1).

3

Mounting the Kit to the Boom

Parts needed for this procedure:

1	Pipe
1	Boom cap
1	Single nozzle plate
1	Single nozzle strap
1	Nozzle mount assembly
1	Clamp assembly
1	Hose-barb elbow
1	Hose clamp
1	Nozzle
1	Plastic reducer
3	Bolt
1	Washer
3	Flange nut

Procedure

1. Secure the clamp assembly and the nozzle mount assembly to the pipe using 1 bolt, 1 washer, and 1 flange nut ([Figure 2](#)).
2. Place the cap on the top of the pipe ([Figure 2](#)).
3. Secure the pipe to the center boom using the single nozzle strap and the single nozzle plate using 2 bolts and 2 flange nuts ([Figure 2](#), [Figure 3](#), or [Figure 4](#)).
4. Place the plastic reducer into the top of the nozzle mount assembly, then insert the nozzle into the plastic reducer ([Figure 2](#)).
5. Attach the hose-barb elbow to the bottom of the nozzle mount assembly, then secure the agitation hose to the hose barb with a hose clamp ([Figure 2](#)).
6. Attach the remaining hose end to the agitation valve with a hose clamp ([Figure 2](#)).

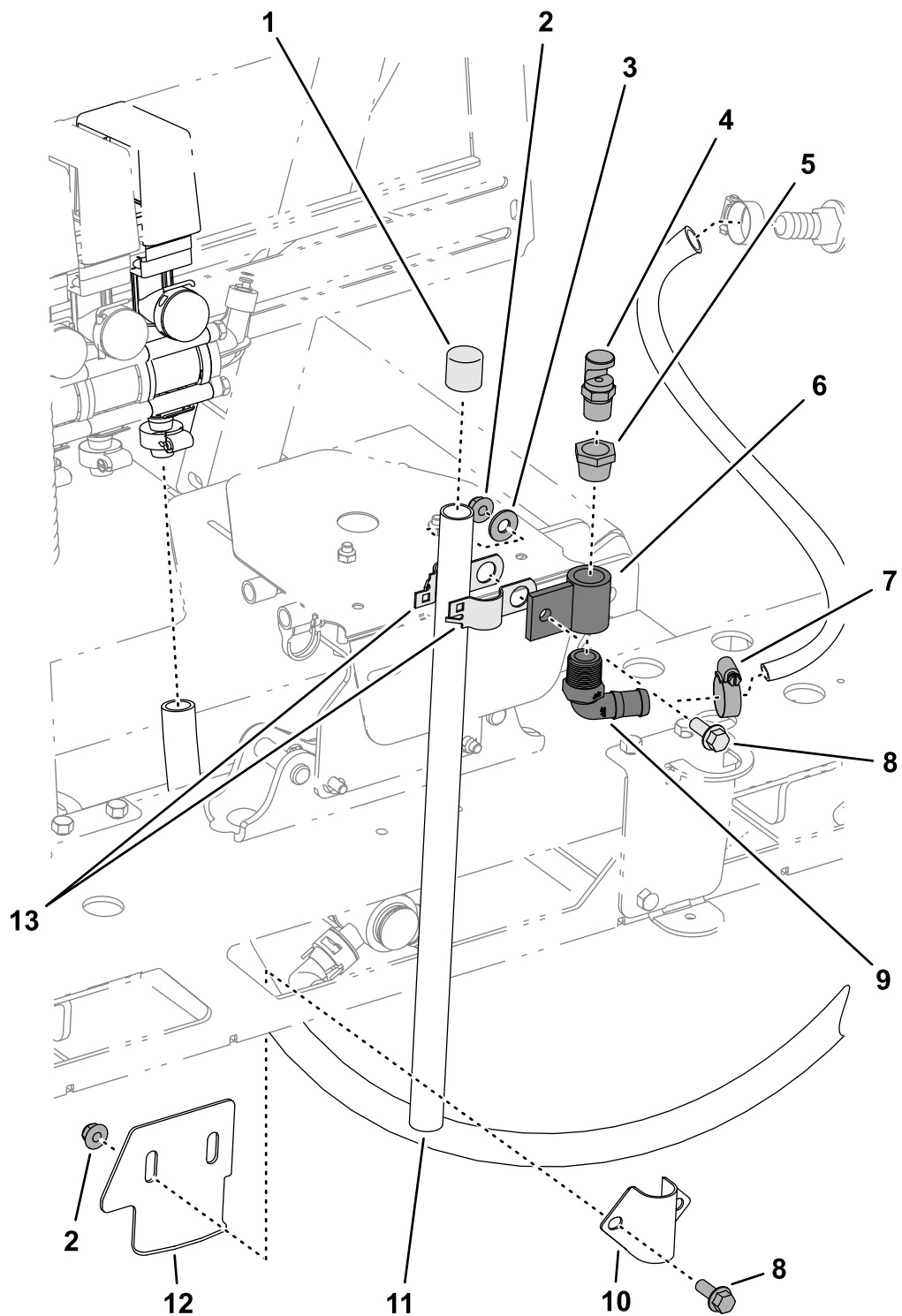
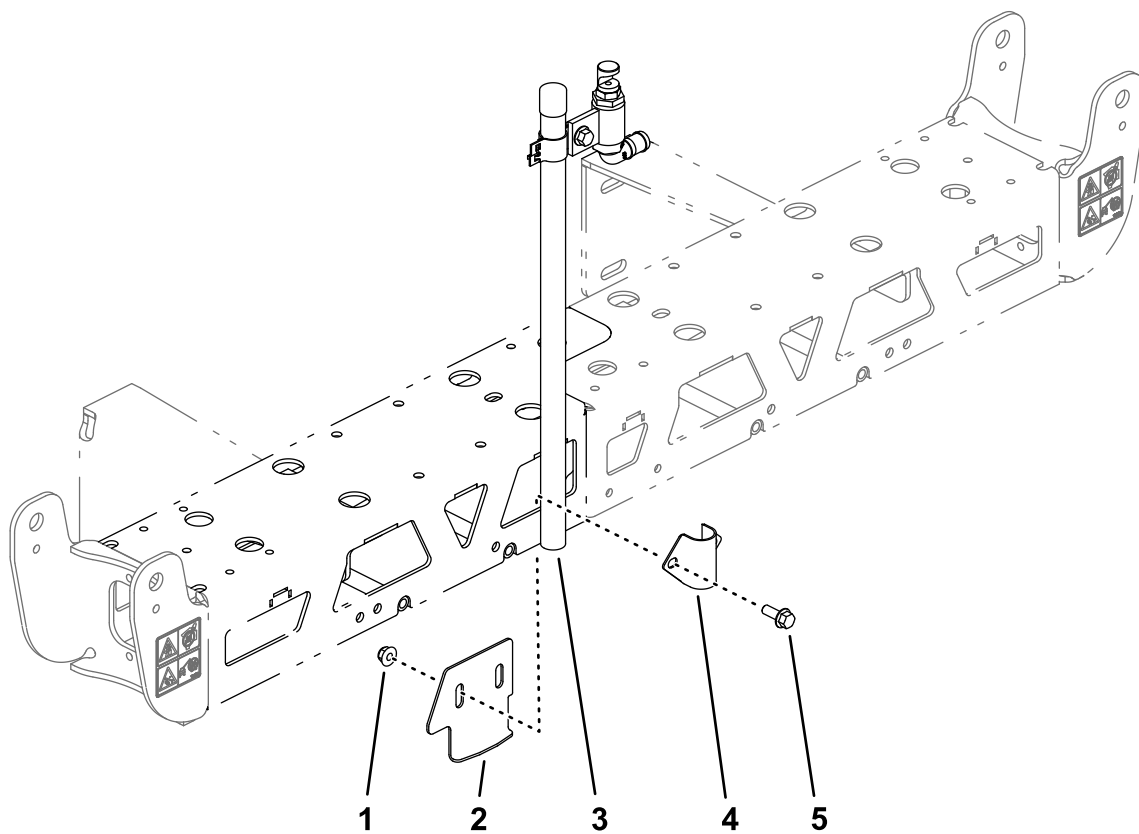


Figure 2

Machine with a 1-Piece Center-Boom Section

- | | | | |
|---------------|--------------------|-------------------------|--------------------|
| 1. Cap | 5. Plastic reducer | 9. Elbow-hose barb | 13. Clamp assembly |
| 2. Flange nut | 6. Nozzle-mount | 10. Single nozzle strap | |
| 3. Washer | 7. Hose clamp | 11. Pipe | |
| 4. Nozzle | 8. Bolt | 12. Single nozzle plate | |

g220679

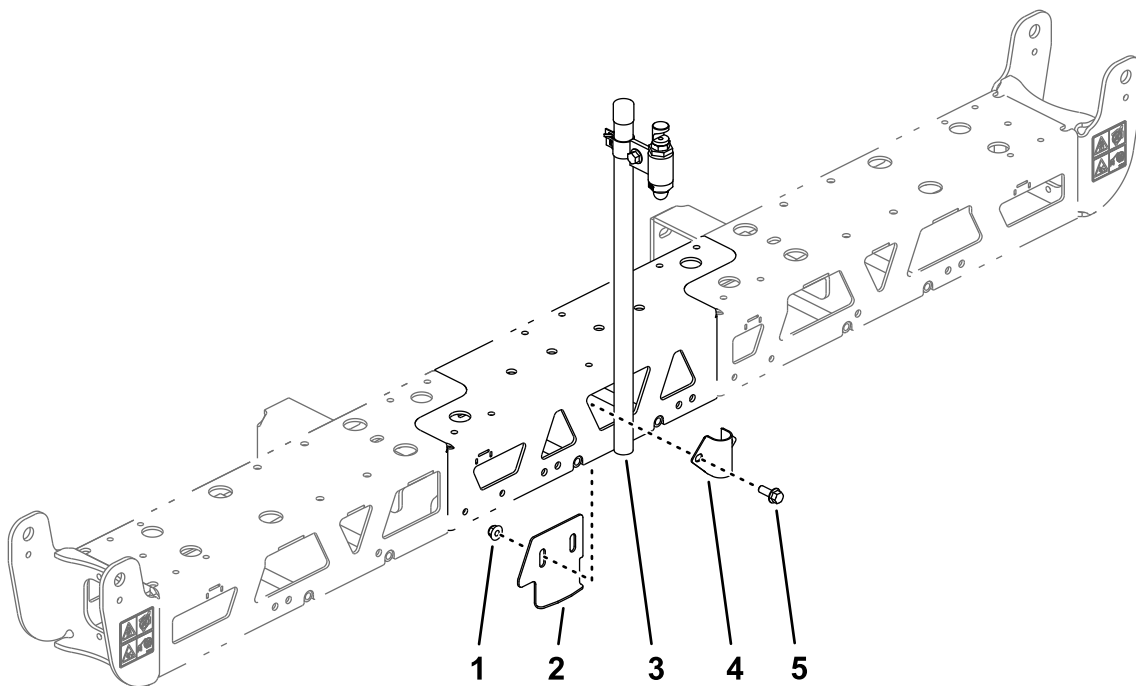


g220667

Figure 3

Machine with a 2-Piece Center-Boom Section

- | | |
|------------------------|------------------------|
| 1. Nut | 4. Single nozzle strap |
| 2. Single nozzle plate | 5. Bolt |
| 3. Pipe | |



g220668

Figure 4

Machine with a 3-Piece Center-Boom Section

- | | |
|------------------------|------------------------|
| 1. Nut | 4. Single nozzle strap |
| 2. Single nozzle plate | 5. Bolt |
| 3. Pipe | |
-

Declaration of Incorporation

The Toro Company, 8111 Lyndale Ave. South, Bloomington, MN, USA declares that the following unit(s) conform(s) to the directives listed, when installed in accordance with the accompanying instructions onto certain Toro models as indicated on the relevant Declarations of Conformity.

Model No.	Serial No.	Product Description	Invoice Description	General Description	Directive
41023	—	Single Nozzle Kit, Multi-Pro Turf Sprayer	SINGLE SPRAY NOZZLE KIT	Sprayer	2006/42/EC, 2000/14/EC and 2005/88/EC

Relevant technical documentation has been compiled as required per Part B of Annex VII of 2006/42/EC.

We will undertake to transmit, in response to requests by national authorities, relevant information on this partly completed machinery. The method of transmission shall be electronic transmittal.

This machinery shall not be put into service until incorporated into approved Toro models as indicated on the associated Declaration of Conformity and in accordance with all instructions, whereby it can be declared in conformity with all relevant Directives.

Certified:



Tom Langworthy
Engineering Director
8111 Lyndale Ave. South
Bloomington, MN 55420, USA
November 3, 2022

Authorized Representative:

Marcel Dutrieux
Manager European Product Integrity
Toro Europe NV
Nijverheidsstraat 5
2260 Oevel
Belgium

UK Declaration of Incorporation

The Toro Company, 8111 Lyndale Ave. South, Bloomington, MN, USA declares that the following unit(s) conform(s) to the regulations listed, when installed in accordance with the accompanying instructions onto certain Toro models as indicated on the relevant Declarations of Conformity.

Model No.	Serial No.	Product Description	Invoice Description	General Description	Regulation
41023	—	Single Nozzle Kit, Multi-Pro Turf Sprayer	SINGLE SPRAY NOZZLE KIT	Sprayer	S.I. 2001 No. 1701 (Noise) and S.I. 2008 No. 1597 (Machinery Safety)

Relevant technical documentation has been compiled as required per S.I. 2008 No. 1597 (Machinery Safety)

We will undertake to transmit, in response to requests by national authorities, relevant information on this partly completed machinery. The method of transmission shall be electronic transmittal.

This machinery shall not be put into service until incorporated into approved Toro models as indicated on the associated Declaration of Conformity and in accordance with all instructions, whereby it can be declared in conformity with all relevant regulations.

This declaration has been issued under the sole responsibility of the manufacturer.
The object of the declaration is in conformity with relevant UK legislation.



Tom Langworthy
Engineering Director
8111 Lyndale Ave. South
Bloomington, MN 55420, USA
November 3, 2022

Authorized Representative:

Marcel Dutrieux
Manager European Product Integrity
Toro U.K. Limited
Spellbrook Lane West
Bishop's Stortford
CM23 4BU
United Kingdom