



170-DH and 190-DH Lawn Tractors

Model No. 74570—200000001 & Up
Model No. 74590—200000001 & Up

Set-Up Instructions

Loose Parts

Note: Use the chart below to verify all parts have been shipped.

DESCRIPTION	QTY.	USE
Steering Wheel	1	Attach the steering wheel.
Locking Pin	1	
Seat	1	Install the seat.
Bolt	2	
Flat Washer	2	
Spring Washer	2	
Trailer Hitch	1	Attach the trailer hitch.
Bolt	2	
Washer	2	
Nut	2	
Collector Cover	1	Assemble the grass collector.
Grass Collector—Partially Assembled	1	
Grass Bag	1	
Fastener Package	1	
Arrow Decal	1	
Key	2	Used in the ignition and Key Choice™ switch.
Operator's Manual	1	Read before operating tractor.
Engine Operator's Manual	1	

Attach the Steering Wheel

1. Straighten the front wheels.
2. Align the holes of the steering wheel with the hole in the steering shaft. Orient the center spoke on the steering wheel so that it aligns with the center axis of the tractor and all of the dash components are visible (Fig. 1).

3. Insert the locking pin through the holes and drive it through the holes with a hammer (Fig. 1).

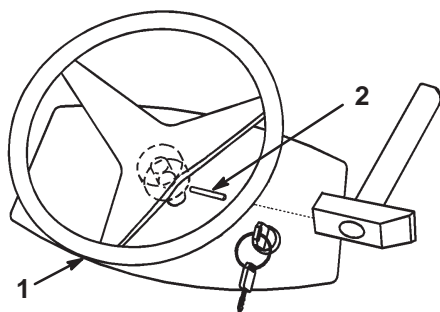


Figure 1

1. Steering wheel orientation
2. Locking pin

Install the Seat

1. Remove the plastic cover from the seat and discard it.
2. Loosen the two bolts on the tractor seat hinges.
3. Set the seat in place and secure it with the two bolts, spring washers, and flat washers (Fig. 2).
4. Connect the safety switch to the seat (Fig. 2).

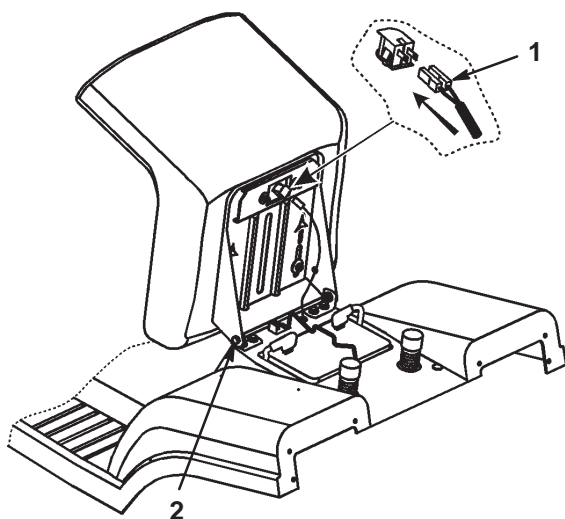


Figure 2

1. Safety switch
2. Bolt and washers

Attach the Trailer Hitch

1. Line up the holes in the trailer hitch with the holes in the tractor frame.
2. Attach the hitch with two bolts, washers, and nuts (Fig. 3).

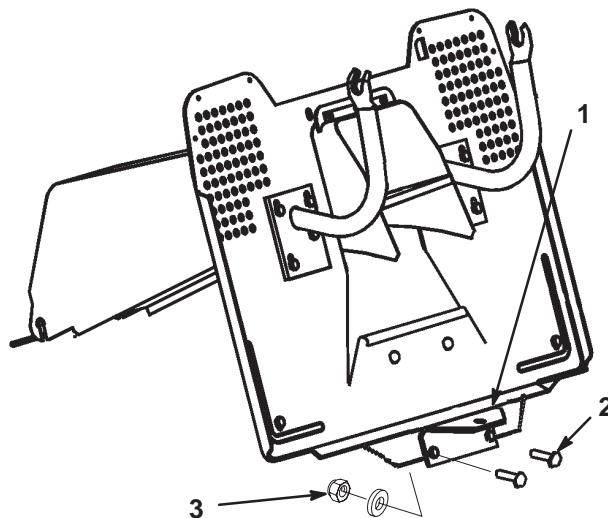


Figure 3

1. Trailer hitch
2. Bolt
3. Washer and nut

Assemble the Grass Collector

1. Tilt the front tube of the partially assembled collector. Align the upper holes with the holes on the upper tube. Loosely fasten the tubes together with the upper bolts (Fig. 4).
2. Place the collector on the rear tractor supports (refer to the Operator's Manual, Installing the Grass Collector) and align the collector frame with the tractor fenders. Tighten the upper bolts (Fig. 4).
3. Stretch the bag and put it over the rear handle (Fig. 4).
4. Insert the bottom tube into the bag (Fig. 4).

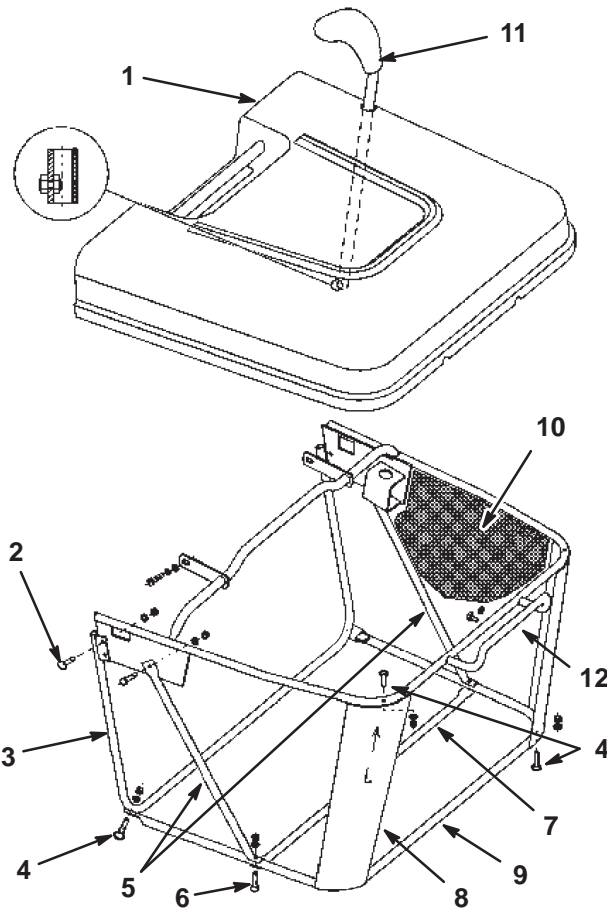


Figure 4

- | | |
|----------------------------|--------------------|
| 1. Cover | 7. Lower brace |
| 2. Upper bolts | 8. Corner supports |
| 3. Front tube | 9. Bottom tube |
| 4. M5 bolts and nuts | 10. Bag |
| 5. Left and right supports | 11. Dumping lever |
| 6. Screws | 12. Rear handle |

5. Insert the corner supports under the top tube. Fasten the corner supports to the top and bottom tubes using the M5 bolts and nuts from under the collector cover (Fig. 4).
6. Fasten the bottom tube to the front tube with M5 bolts and nuts (Fig. 4).

7. Tilt the left and right supports rearward. Place the lower brace on the outside of the bag and secure it to the left and right supports with the screws (Fig. 4).
8. Place the cover on the grass collector. Align the cover with the rear fender by adjusting the rear tractor supports until there is a proper seal between the cover and the collector. Tighten the rear tractor support bolts.
9. Remove the grass collector from the tractor. Tighten all screws securely.
10. Use the plastic extrusions on the bag edges to fix the bag to the frame tube.
11. Insert the dumping lever through the hole of the cover and secure it with the M5 x 12 screw and M5 nut (inside the tube) (Fig. 4).
12. Install the grass collector to the tractor (refer to the Operator's Manual, Installing the Grass Collector). When the grass collector is properly positioned, place the triangle symbol decal directly opposite the triangle symbol on the rear of the tractor.

Check the Oil Level

The tractor is shipped from the factory with oil in the engine crankcase; however, it may be necessary to add oil. Refer to the Operator's Manual, Engine Oil Specifications for oil type, viscosity, and crankcase capacity. Add only enough oil to raise the level to the "FULL" mark on the dipstick.

Activate the Battery

1. Remove the battery from the tractor; refer to the Operator's Manual, Removing the Battery.

2. Remove the filler caps from the top of the battery.



DANGER

POTENTIAL HAZARD

- **Battery electrolyte contains sulfuric acid which is a deadly poison and it causes severe burns.**

WHAT CAN HAPPEN

- **If you carelessly drink electrolyte you could die or if it gets onto your skin you will be burned.**

HOW TO AVOID THE HAZARD

- **Do not drink electrolyte and avoid contact with skin, eyes or clothing. Wear safety glasses to shield your eyes and rubber gloves to protect your hands.**
- **Fill the battery where clean water is always available for flushing the skin.**
- **Follow all instructions and comply with all safety messages on the electrolyte container.**

3. Slowly pour electrolyte into each cell until the level is up to the lower part of the tube.
4. Leave the filler caps off and connect a 3 to 4 amp battery charger to the battery posts. Charge the battery at a rate of 4 amperes or less for 4 hours (12 volts). Do not overcharge the battery. Install the filler caps after the battery is fully charged.



WARNING

POTENTIAL HAZARD

- **Charging the battery produces gasses.**

WHAT CAN HAPPEN

- **Battery gasses can explode.**

HOW TO AVOID THE HAZARD

- **Keep cigarettes, sparks and flames away from battery.**

5. Install the battery in the chassis; refer to the Operator's Manual, Installing the Battery.

Fill the Fuel Tank

Add fuel to the fuel tank; refer to Filling the Fuel Tank in the Operator's Manual.

Check the Tire Pressure

Check front and rear tires for proper inflation; refer to the Operator's Manual, Tire Pressure for recommended inflation pressure.

Lubrication

Make sure all of the necessary points on the tractor are lubricated; refer to Greasing and Lubrication in the Operator's Manual.

Insert the Keys into Ignition and Key Choice™ Switches

The Key Choice switch is located on the right side of seat bracket below the seat.

Check Safety System

Refer to the Operator's Manual, Testing the Safety System.

Test Drive the Tractor

Make sure all electrical and mechanical systems are operating properly. See the Operator's Manual for proper control function.