



# Tank Clean Rinse Kit

## Multi Pro® 1750 Turf Sprayer

Model No. 41208—Serial No. 315000001 and Up

### Operator's Manual

## Safety

Also read the safety and operation instructions in the vehicle *Operator's Manual*.

## Chemical Safety

### ⚠ WARNING

***Chemical substances used in the spray system may be hazardous and toxic to you, bystanders, animals, plants, soils or other property.***

- Carefully read and follow the chemical warning labels and Material Safety Data Sheets (MSDS) for all chemicals used and protect yourself according to the chemical manufacturer's recommendations. For example, use appropriate Personal Protective Equipment (PPE) including face and eye protection, gloves, or other equipment to guard against personal contact with the chemical.
- Keep in mind that there may be more than one chemical used and information on each should be assessed.
- ***Refuse to operate or work on the sprayer if this information is not available!***
- Before working on a spray system make sure the system has been triple rinsed and neutralized according to the recommendations of the chemical manufacturer(s) and all of the valves have been cycled three times.
- Verify there is an adequate supply of clean water and soap nearby, and immediately wash off any chemicals that contact you.
- Obtain proper training before using or handling chemicals.
- Use the correct chemical for the job.
- Follow the chemical manufacturer's instructions for the safe application of the chemical.
- Handle chemicals in a well ventilated area.
- Wear goggles and other protective equipment as instructed by the chemical manufacturer. Ensure that as little skin as possible is exposed while using chemicals.
- Have clean water available especially when filling the spray tank.
- Do not eat, drink, or smoke while working with chemicals.
- Always wash your hands and other exposed areas as soon as possible after finishing the work.
- Properly dispose of unused chemicals and chemical containers as instructed by the chemical manufacturer and your local codes.
- Chemicals and fumes in the tanks are dangerous; never enter the tank or place your head over or in the opening.
- Follow all local/state/federal requirements for the spraying of chemicals.



# Setup

## Loose Parts

Use the chart below to verify that all parts have been shipped.

Procedure	Description	Qty.	Use
<b>1</b>	No parts required	–	Prepare the machine.
<b>2</b>	Rinse tank bracket Large washer Flange nut Carriage bolt	2 2 2 2	Install the rinse tank.
<b>3</b>	Rinse nozzle assembly Rinse nozzle hosebarb Plastic flange nut	2 2 2	Install the rinse nozzle.
<b>4</b>	Rinse pump mounting bracket Rinse pump Carriage bolt Flange nut Small washer Bolt Pump hosebarb	1 1 2 2 4 4 2	Install the pump.
<b>5</b>	Rinse-filter hose assembly Tee fitting 124.5 cm (49 inch) hose 48 cm (19 inch) hose Hose clamp Rinse pump cover Hairpin	1 1 1 2 8 1 2	Install the hoses and filter.
<b>6</b>	Dash switch	1	Install the dash switch.

**Note:** Determine the left and right sides of the machine from the normal operating position.

# 1

## Preparing the Machine

No Parts Required

### Procedure

1. Move the sprayer onto a level surface, set the parking brake, stop the pump, stop the engine, and remove the ignition key.
2. Drain the contents of the tank to remove any solution in lines. Refer to the *Operator's Manual* for more information.

**Note:** Take caution while disconnecting any hoses during the installation of this kit and have a catch bucket ready for any solutions remaining in the hose.

3. Remove the panel from the seat base assembly to expose the rinse tank rest brackets.

### ⚠ CAUTION

Chemicals are hazardous and can cause personal injury.

- Read the directions on the chemical labels before handling the chemicals and follow all manufacturer recommendations and precautions.
- Keep chemicals away from your skin. Should contact occur, wash the affected area thoroughly with soap and clean water.
- Wear goggles and any other protective equipment recommended by the chemical manufacturer.

# 2

## Installing the Rinse Tank

Parts needed for this procedure:

2	Rinse tank bracket
2	Large washer
2	Flange nut
2	Carriage bolt

### Installing the Hardware for the Rinse Tank Straps

1. Remove and retain the fasteners securing the front tank straps at the top of the tank. Discard the short carriage bolt and nut holding the R-clamp in place.
2. Install 2 carriage bolts to the upper inboard holes on the front tank straps (Figure 1).

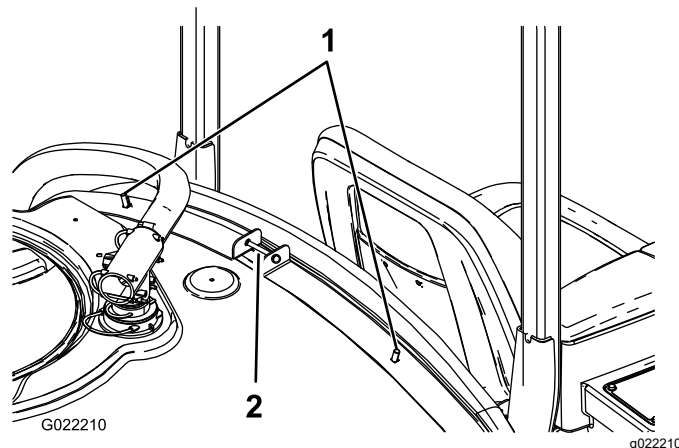


Figure 1

1. Carriage bolts

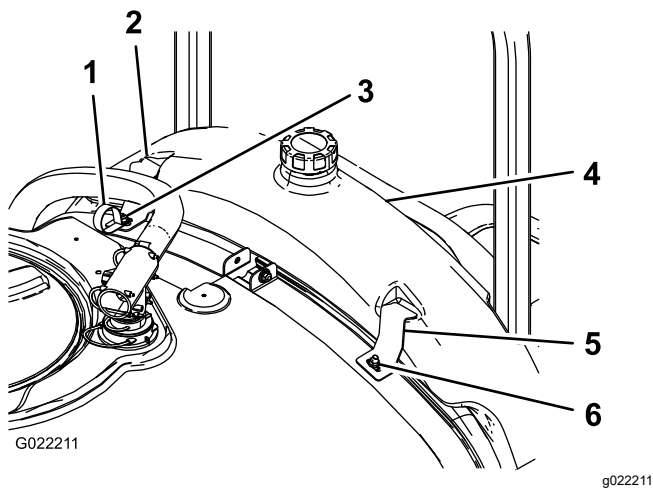
3. Install the tank strap fasteners removed previously to secure the straps to the tank.

**Note:** Make sure that the strap is secure to the tank. **Do not overtighten the hardware.**

### Install the Rinse Tank

1. Remove the guard behind the seat of the machine where the rinse tank will be installed.
2. Install the rinse tank as shown in Figure 2.

**Note:** You may need to move the fresh water tank to install the rinse tank.



**Figure 2**

1. R-clamp
2. Rinse tank
3. Rinse tank bracket
4. Large washer and flange nut

3. Using 2 large washers and flange nuts, install the rinse tank brackets and R-clamp to the previously installed carriage bolts (Figure 2).

**Note:** Once the rinse tank has been initially filled the rinse tank strap fasteners should be checked and tightened if necessary as the weight of the liquid can further seat the tank against the frame.

# 3

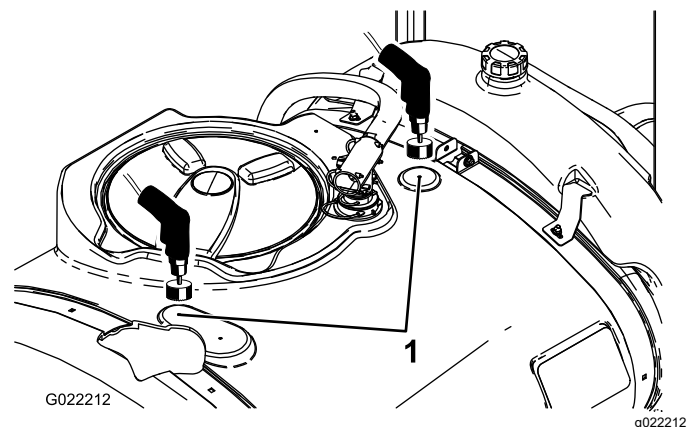
## Installing the Rinse Nozzles

Parts needed for this procedure:

2	Rinse nozzle assembly
2	Rinse nozzle hosebarb
2	Plastic flange nut

## Drilling the Main Tank

1. Open the tank lid and remove the strainer basket.
2. Locate the two drill marks on the main tank (Figure 3).



**Figure 3**

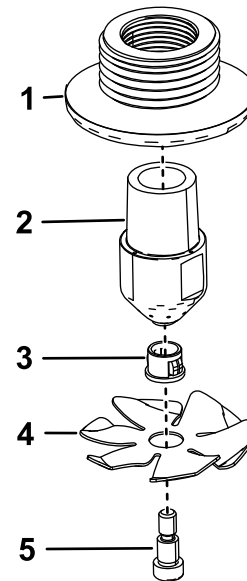
1. Drill marks
3. Use a 4 cm (1-5/8 inch) hole saw to drill a hole at each drill mark.

**Note:** Place a receptacle inside the tank and below the areas to be drilled to catch any debris created during the cutting.

**Important:** Debris left inside a tank could clog and damage the spray system during operation.

## Installing the Rinse Nozzles

1. Assemble the 2 rinse nozzles as shown in Figure 4.



**Figure 4**

1. Bulkhead fitting
2. Rinse nozzle
3. Bushing
4. Rinse vane
5. Shoulder bolt

2. Install the nozzle assemblies up through the drilled holes (Figure 5).

# 4

## Installing the Pump

### Parts needed for this procedure:

1	Rinse pump mounting bracket
1	Rinse pump
2	Carriage bolt
2	Flange nut
4	Small washer
4	Bolt
2	Pump hosebarb

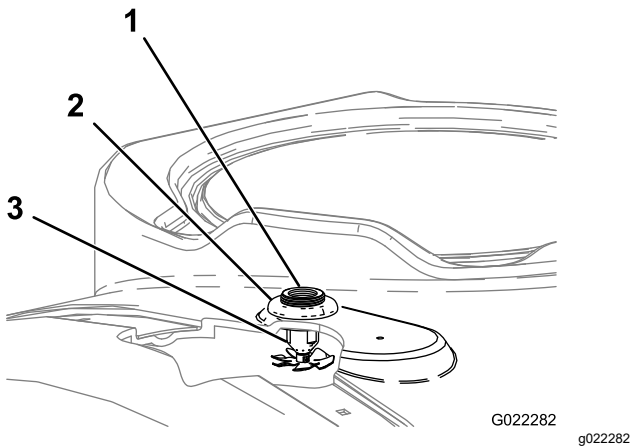


Figure 5

1. Bulkhead fitting
2. Plastic flange nut
3. Rinse nozzle assembly

3. Install the plastic flange nut over the exposed threads of the bulkhead on top of the tank (Figure 5). Ensure that the seal is seated correctly between the bulkhead fitting and the underside of the tank.
4. Install the 2 rinse nozzle hosebarbs into the threaded openings of the rinse nozzle bulkheads (Figure 6).

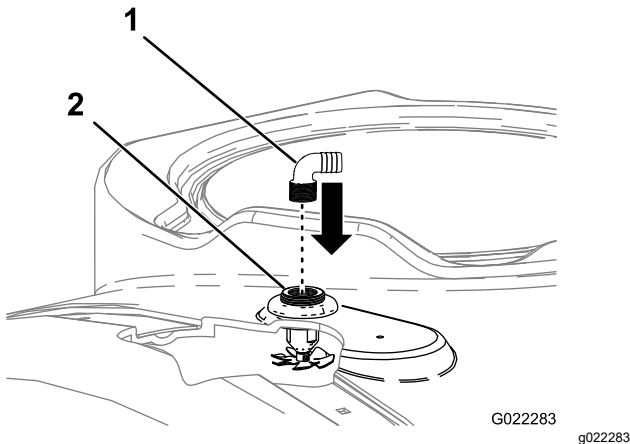


Figure 6

1. 90° fitting
2. Rinse nozzle assembly

5. Direct the hose barbs towards the middle of the right side of the machine.

### Procedure

1. Remove the fasteners securing the rear tank straps at the top of the tank. Retain all parts.
2. Install 2 carriage bolts to the low inboard holes on the right side of the rear tank strap (Figure 7).

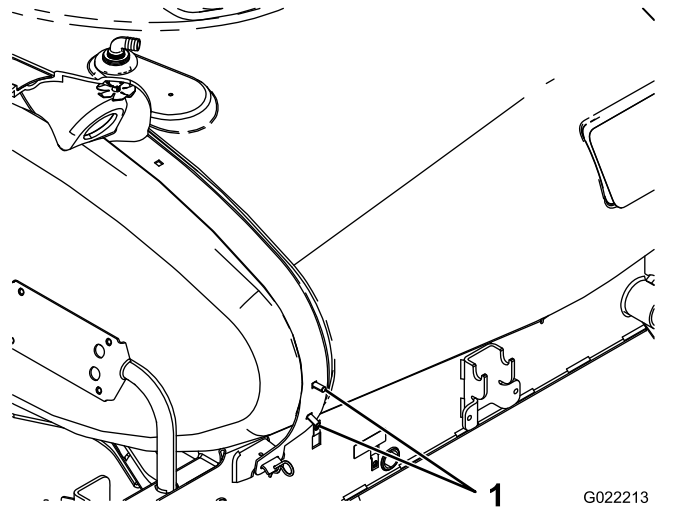


Figure 7

1. Carriage bolts

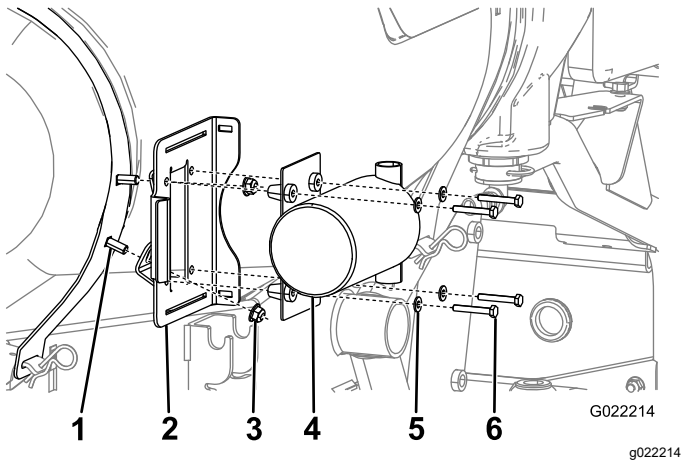
3. Install the tank strap fasteners removed previously to secure the straps to the tank.  
Make sure the strap is secure to the tank. **Do not overtighten.**
4. Attach the rinse pump mounting bracket to the previously installed carriage bolts using 2 flange nuts (Figure 8).

# 5

## Installing the Hoses and Filter

### Parts needed for this procedure:

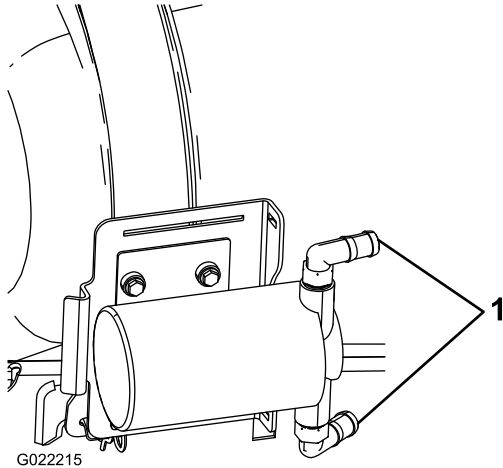
1	Rinse-filter hose assembly
1	Tee fitting
1	124.5 cm (49 inch) hose
2	48 cm (19 inch) hose
8	Hose clamp
1	Rinse pump cover
2	Hairpin



**Figure 8**

1. Carriage bolt
2. Rinse pump mounting bracket
3. Flange nut
4. Rinse pump
5. Small washer
6. Bolt

5. Attach the pump hosebarbs as shown in [Figure 9](#).



**Figure 9**

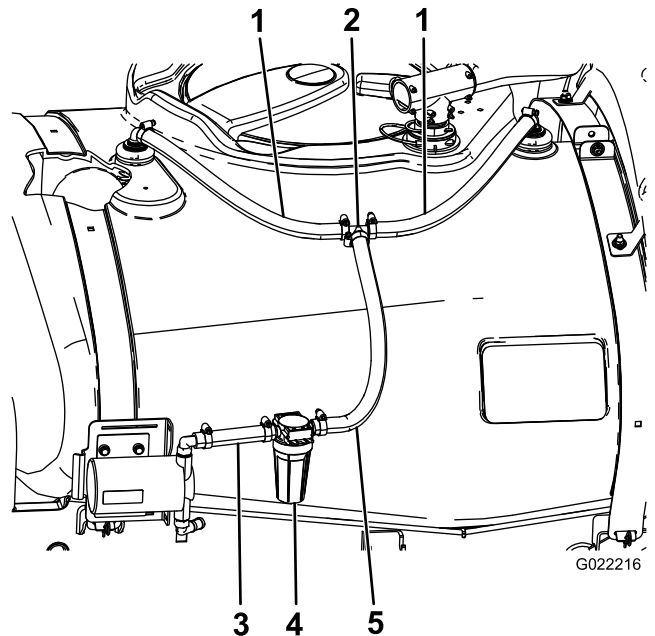
1. Hosebarbs

6. Secure the pump to the frame using the 4 bolts and 4 small washers ([Figure 8](#)).
7. Connect the pump wire harness to the main wiring harness near the back of the machine.

## Install the Rinse Nozzle Hoses and Tee Fitting

**Note:** Lightly lubricating the barbed end of a hose fitting with a non-petroleum based lubricant such as vegetable oil can ease the process of installation.

1. Attach the 48 cm (19 inch) hoses to the previously installed rinse nozzle hosebarbs using 2 hose clamps ([Figure 10](#)).



**Figure 10**

1. 48 cm (19 inch) hose
2. Tee fitting
3. 15 cm (6 inch) hose
4. Rinse pump filter
5. 53 cm (21 inch) hose

2. Attach the loose ends of the hoses to the tee fitting with 2 hose clamps (Figure 10).

## Install the Rinse Filter

1. Attach the long end of the rinse-filter hose to the tee fitting with a hose clamp (Figure 10).
2. Attach the other end of the rinse-filter hose to the upper hosebarb on the rinse pump with a hose clamp (Figure 10).

## Install the Rinse Tank Hose

1. Route the rinse tank hose between the front tank strap and the side of the tank (Figure 11).

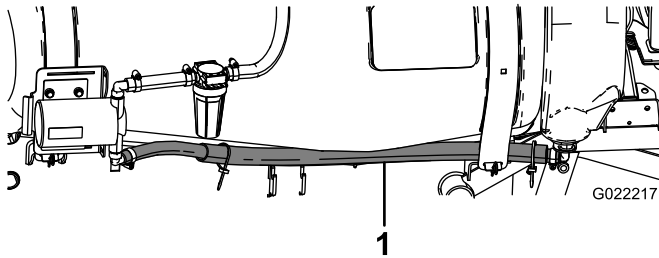


Figure 11

1. 124.5 cm (49 inch) hose

2. Install the rinse tank hosebarb to the bulkhead fitting and secure it with a retaining fork (Figure 12). Rotate the fitting so that it faces rearward.

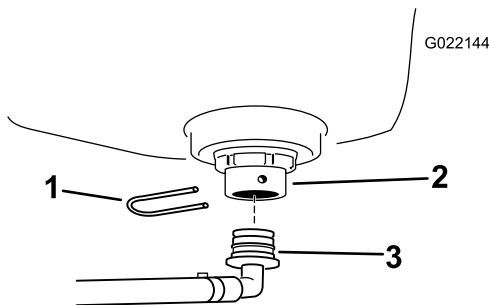


Figure 12

1. Retaining fork
2. Bulkhead fitting
3. Rinse tank hosebarb

3. Attach the end of the hose to the lower hosebarb on the rinse pump with a hose clamp (Figure 11).
4. Install the rinse pump cover over the pump and secure it with 2 hairpins.

# 6

## Installing the Dash Switch

### Parts needed for this procedure:

1	Dash switch
---	-------------

## Install the Dash Switch

1. Locate the plug for the rinse tank switch on the side of the sprayer console and remove the plug (Figure 13).

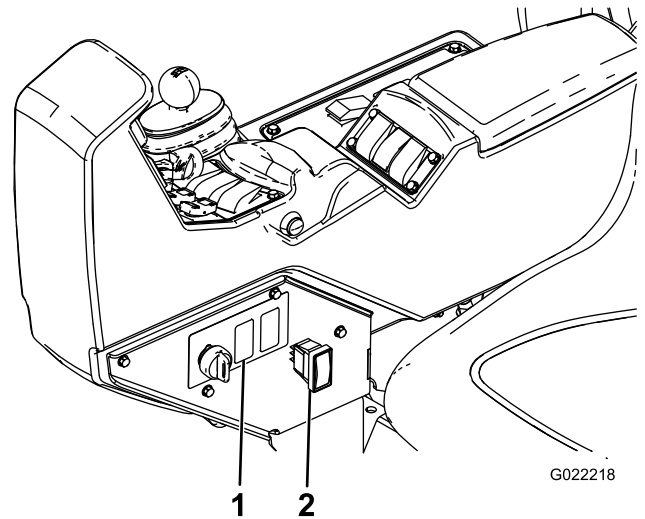


Figure 13

1. Hole in dash
2. Dash switch

2. Remove and retain the bolts securing the panel to the console.
3. Locate the box connector labeled rinse tank in the main harness, and route it toward the open hole on the side of the console arm.
4. Install the switch to the box connector through the console (Figure 13).

**Note:** Ensure that the switch is properly oriented; it should remain engaged when pressed up but not when pressed down.

5. Push the switch into the dash to mount it.
6. Secure the panel to the console using the previously removed bolts.

# Operation

The use of the Tank Cleanse Rinse Kit will result in a rinsate; a diluted solution of residual chemicals. In many cases it is appropriate to apply the rinsate onto the treated areas. However, before doing so, check with the manufacturers of the chemical to ensure the application of a diluted solution to the treated areas will not adversely affect the performance of the product.

**Important:** The Tank Cleanse Rinse Kit is not intended to dislodge clumped masses of wettable powder or “water-soluble” chemicals that occur when chemicals are not properly introduced into the main tank.

introduction of any other substance to the rinse tank can cause a safety hazard and/or damage the machine.

## Controls

The Tank Cleanse Rinse Kit is controlled by a 3-position switch.

- **Up:** the rinse pump is On, the switch will lock in the up position, and the delay timer is activated.
- **Neutral:** the rinse pump is Off and switch is in a middle position.
- **Down:** the rinse pump is On, the switch must be held in the down position, and the delay timer is not activated.

Press the switch up to start a timed rinse. The pump runs for 60 seconds and pumps approximately 1/3 of the rinse tank contents into the main tank. During this time the switch will stay in the up position. After 60 seconds the pump will stop running. The switch will remain in the up position until you move it to the center or Neutral position.

When the switch is in the **Neutral** position, the power is not supplied to the pump and the rinse kit is off.

Press the switch down to cycle the momentary switch. Power is supplied to the pump for the duration in which the switch is held down. Release pressure and the switch will move to the neutral position and power will not be supplied to the pump. While the switch is held in the down position the pump will run.

## Filling the Tank

Position the sprayer on a level surface, set the parking brake, stop the pump, stop the engine, and remove the ignition key.

Remove the rinse tank cap and fill the tank with approximately 66 L (17.5 US gallons) of clean water. Replace the cap

**Important:** The 66 L (17.5 US gallon) rinse tank is only intended to be filled with clean water. The



## Using the Rinse Cycle

Using the rinse cycle allows the vehicle to be moving during the rinse processes.

1. Turn the rinse pump On:
  - Use the Up position for a timed rinse
  - Or press and hold the switch Down for the desired duration.
2. Once the pump has placed 22 L (5.8 US gallons) of water in the tank, the user can use the agitation switch to put clean water into the agitation loop.
3. Pump the rinsate out as required by Federal, State and Local regulations. Either:
  - Spray the rinsate through the booms until the main tank is empty.
  - Or drain the main tank contents into a suitable container and dispose of the diluted solution as required by federal, state or local regulations.

**Note:** Repeat the rinse cycle again if necessary or for 2 timed rinse cycles.

## Maintenance

### Inspecting the Rinse Pump Filter

**Service Interval:** After the first 5 hours  
Every 50 hours

Check the filter for any signs of damage. Replace if any damage is found.

### Inspecting the Rinse System for Leaks and Damage

**Service Interval:** Before each use or daily—Inspect the hoses for leaks.

After the first 5 hours—Inspect the hoses for damage.

Every 100 hours—Inspect the hoses and O-rings for damage.

After the first 5 hours of operation, inspect all hoses and connections for any leaks or signs of damage. Inspect the hose clamps and retaining forks. Verify that all connections are secure. Replace any damaged parts. Repeat this inspection before each use of the rinse system.

After 100 operating hours, inspect all hoses and O-rings. Replace any damaged parts.

Contact your Authorized Toro Dealer to obtain replacement parts.

### Inspecting the Rinse Tank Straps

**Service Interval:** After the first hour—Check the rinse tank straps.

Once the main tank has been filled with water, check to see if there is any play in the tank straps. If the straps are loose, tighten the fasteners at the top of the straps until they are flush with tank. **Do not over tighten.**

**Important:** Over tightening the tank strap fasteners can result in deforming and damaging of the straps.

# Storage

Drain the pump inlet line, outlet line, and filter line prior to storage for 30 days or more.

# Declaration of Incorporation

The Toro Company, 8111 Lyndale Ave. South, Bloomington, MN, USA declares that the following unit(s) conform(s) to the directives listed, when installed in accordance with the accompanying instructions onto certain Toro models as indicated on the relevant Declarations of Conformity.

Model No.	Serial No.	Product Description	Invoice Description	General Description	Directive
41208	315000001 and Up	Tank Clean Rinse Kit, Multi Pro 1750 Turf Sprayer	TANK CLEANSE RINSE KIT - MP1750	Sprayer Accessory	2006/42/EC, 2004/108/EC (Effective until 20 April 2016), 2014/30/EU (Effective after 20 April 2016)

Relevant technical documentation has been compiled as required per Part B of Annex VII of 2006/42/EC.

We will undertake to transmit, in response to requests by national authorities, relevant information on this partly completed machinery. The method of transmission shall be electronic transmittal.

This machinery shall not be put into service until incorporated into approved Toro models as indicated on the associated Declaration of Conformity and in accordance with all instructions, whereby it can be declared in conformity with all relevant Directives.

Certified:



Tom Langworthy  
Engineering Director  
8111 Lyndale Ave. South  
Bloomington, MN 55420, USA  
November 3, 2022

Authorized Representative:

Marcel Dutrieux  
Manager European Product Integrity  
Toro Europe NV  
Nijverheidsstraat 5  
2260 Oevel  
Belgium

# UK Declaration of Incorporation

The Toro Company, 8111 Lyndale Ave. South, Bloomington, MN, USA declares that the following unit(s) conform(s) to the regulations listed, when installed in accordance with the accompanying instructions onto certain Toro models as indicated on the relevant Declarations of Conformity.

Model No.	Serial No.	Product Description	Invoice Description	General Description	Regulation
41208	315000001 and Up	Tank Clean Rinse Kit, Multi Pro 1750 Turf Sprayer	TANK CLEANSE RINSE KIT - MP1750	Sprayer Accessory	S.I. 2008 No. 1597, S.I. 2016 No. 1091

Relevant technical documentation has been compiled as required per S.I. 2008 No. 1597.

We will undertake to transmit, in response to requests by national authorities, relevant information on this partly completed machinery. The method of transmission shall be electronic transmittal.

This machinery shall not be put into service until incorporated into approved Toro models as indicated on the associated Declaration of Conformity and in accordance with all instructions, whereby it can be declared in conformity with all relevant Regulations.

This declaration has been issued under the sole responsibility of the manufacturer.  
The object of the declaration is in conformity with relevant UK legislation.



Tom Langworthy  
Engineering Director  
8111 Lyndale Ave. South  
Bloomington, MN 55420, USA  
November 3, 2022

Authorized Representative:

Marcel Dutrieux  
Manager European Product Integrity  
Toro U.K. Limited  
Spellbrook Lane West  
Bishop's Stortford  
CM23 4BU  
United Kingdom