



# Bagger

## Z Master<sup>®</sup> 200 Series

Model No. 78491—22000001 and Up

## Parts Catalog

### Ordering Replacement Parts

To order replacement parts, please supply: the part number, the quantity, and the description of each part desired.

### Understanding Reference Numbers

Each identified part in an illustration has a reference number. The reference number for a part also appears in the parts list, along with other information about the part.

This catalog uses two special reference number formats, one to indicate parts in a service assembly and another to indicate the quantity of a given part in an illustration.

### Service Assembly Reference Numbers

Parts in service assemblies have reference numbers in the form **a:b**. The **a** represents the reference number of the entire service assembly and the **b** represents a sequential number unique to each part within the service assembly.

For example, a wheel assembly might be identified by reference number **6**, the tire by **6:1**, the valve by **6:2**, and the wheel by **6:3**. When you order the assembly identified by reference number **6**, you receive all parts identified by reference numbers **6:1**, **6:2**, and **6:3**. However, you may also order any part individually.

Reference numbers of this type appear in illustrations and in part lists.

### Reference Numbers Indicating Quantity

In an illustration, if a reference number indicates more than one part, the reference number has the form **nX y**. The **n** represents the quantity of the part, the **X** is the multiplication symbol, and the **y** represents the reference number.

For example, in an illustration, the reference number **2X 37** means that two of the parts identified by reference number **37** are indicated.

## Contents

Description	Page	Description	Page
Door Assembly .....	3	Dump Arm Assembly .....	7
Frame Assembly .....	4	Drive Assembly .....	8
Front Hopper Assembly Exhaust Tube Asm. ....	5	Weight Assembly .....	9
Top Scroll, Fan and Shaft Assembly .....	6		

## Accessories

Description	Model / Part No.	Description	Model / Part No.
Top Weight .....	105-9741-01		

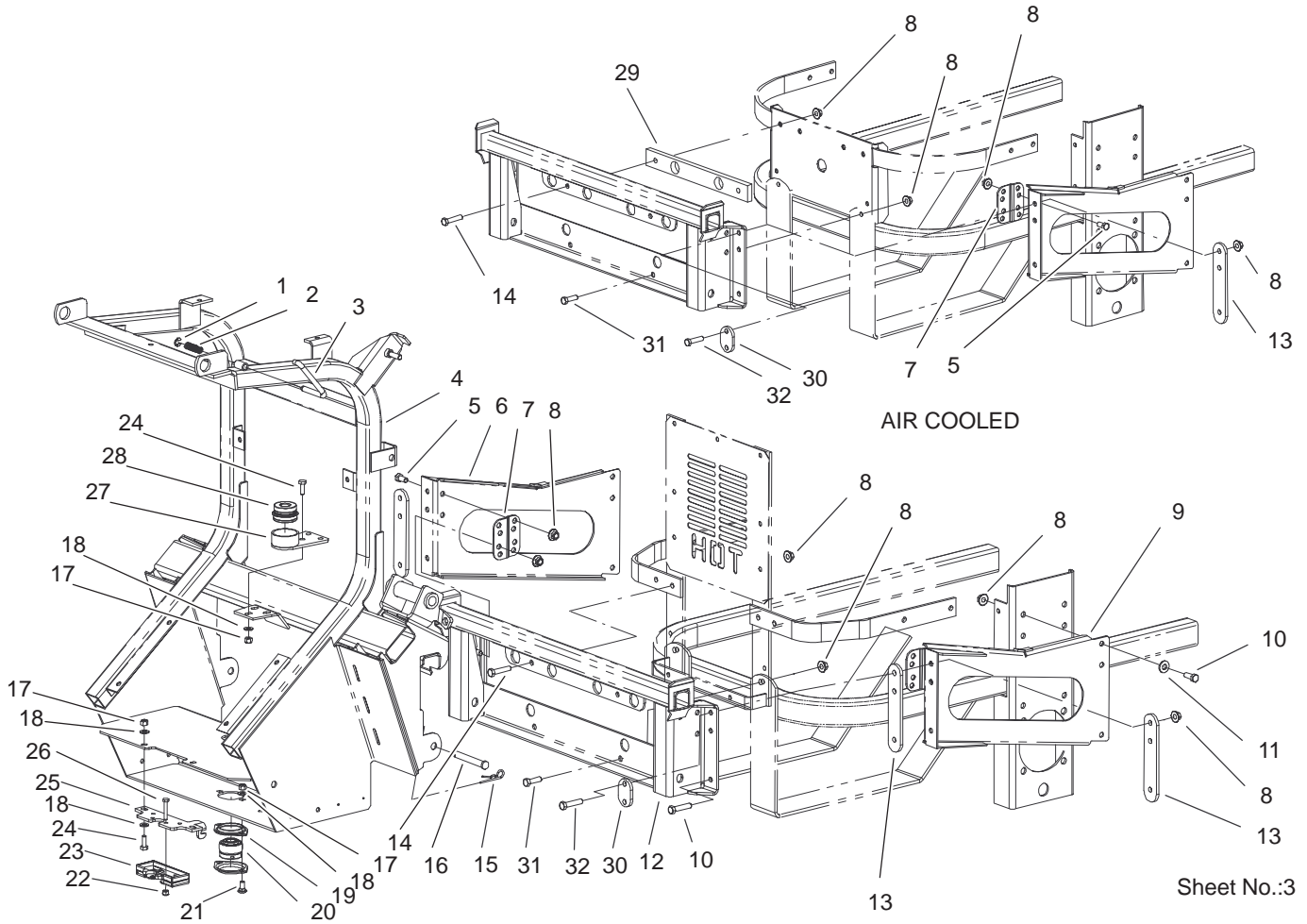
## Part Description Abbreviations

Part descriptions in this catalog may include the following abbreviations.

Abbreviation	Meaning	Abbreviation	Meaning
AR .....	as required	HYD .....	hydraulic
ASM .....	assembly	INC .....	incorporated
CARR .....	carriage	LH .....	left hand
DEG .....	degrees	NI .....	nylon insert
FH .....	flat head	PPH .....	Phillips pan head
GA .....	gauge	PTH .....	Phillips truss head
HF .....	hex flange	PTO .....	power take off
HH .....	hex head	RH .....	right hand
HHF .....	hex head flange	SFH .....	slotted fillister head
HLH .....	hex lag head	SHH .....	slotted hex head
HJ .....	hex jam	SQH .....	square head
HOC .....	height-of-cut	SHWH .....	slotted hex washer head
HS .....	hex socket	SPH .....	slotted pan head
HSBH .....	hex socket button head	SRH .....	slotted round head
HSFH .....	hex socket flat head	STD .....	standard
HSH .....	hex socket head	TAP .....	self tapping
HWH .....	hex washer head	TTH .....	Torx truss head
HWHTF .....	hex washer head thread forming	WH .....	wing head

PROTOTYPE





Sheet No.:3

## Frame Assembly

Ref. No.	Part No.	Qty.	Description
1	32151-101	1	E-Ring
2	105-9715	1	Spring
3	105-5574	1	Hook
4	105-8200-03	1	Frame ASM
5	323-4	8	Screw-HH
6	106-3302-03	1	LH Frame Bracket ASM
7	105-9748-03	2	Bracket-Stiffener
8	32128-19	24	Nut-HF
9	106-3301-03	1	RH Frame Bracket ASM
10	323-6	6	Screw-HH
11	98-5975	6	Washer-Belleville
12	105-9719-03	1	Bagger Mount ASM
13	105-9744-03	4	Spacer-Frame
14	323-9	2	Screw-HH
15	1-806005	2	Pin-Hair
16	283-69	2	Pin-Clevis
17	3296-29	7	Nut-Lock, NI
18	3256-23	9	Washer-Flat
19	105-9714	2	Flange-Bearing
20	105-9669	1	Bearing-Spherical
21	3230-1	2	Screw-CARR
22	3296-42	4	Nut-Lock, NI
23	105-9663	1	Latch-Rotor
24	322-4	5	Screw-HH

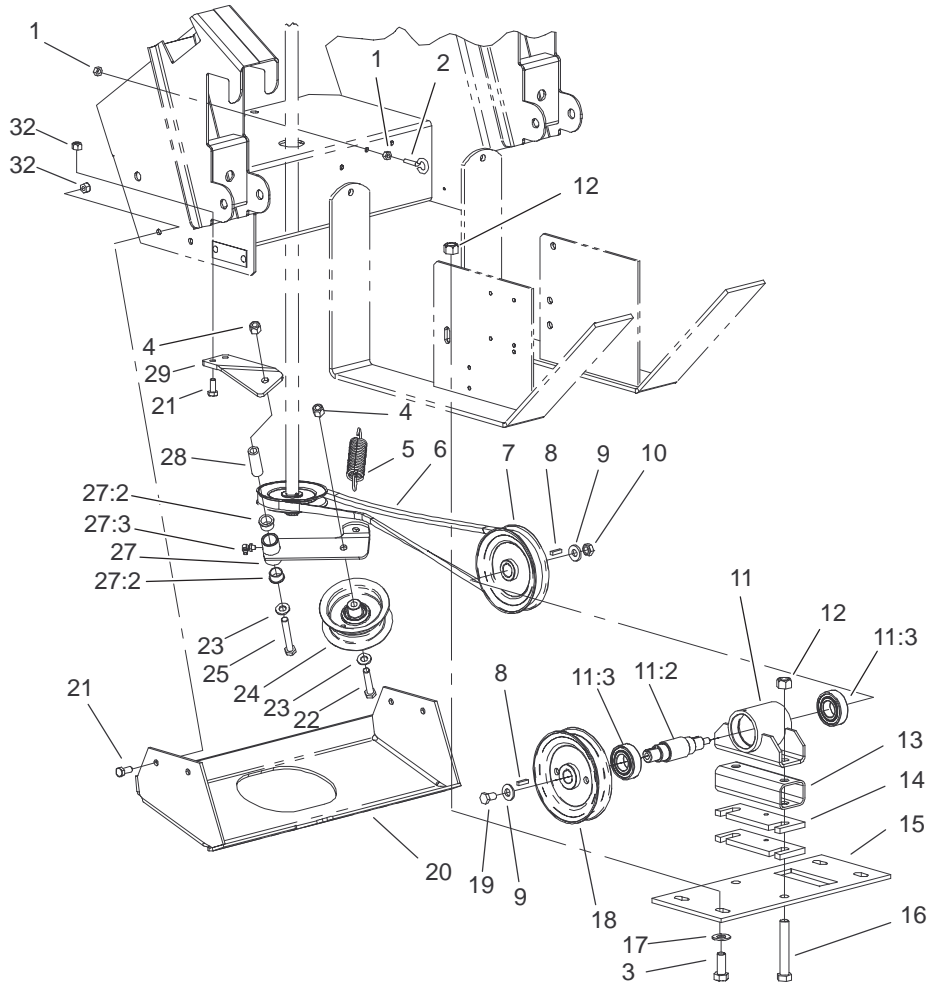
Ref. No.	Part No.	Qty.	Description
25	105-8237	1	Bracket-Latch
26	321-9	4	Screw-HH
27	105-9697-03	1	Bearing Flange ASM
28	105-9670	1	Bearing-Cylindrical
29	105-9730-03	1	Spacer-Frame, Bagger
30	106-3320-03	2	Spacer-Frame, Short
31	323-7	4	Screw-HH
32	323-8	4	Screw-HH

PROTOTYPE









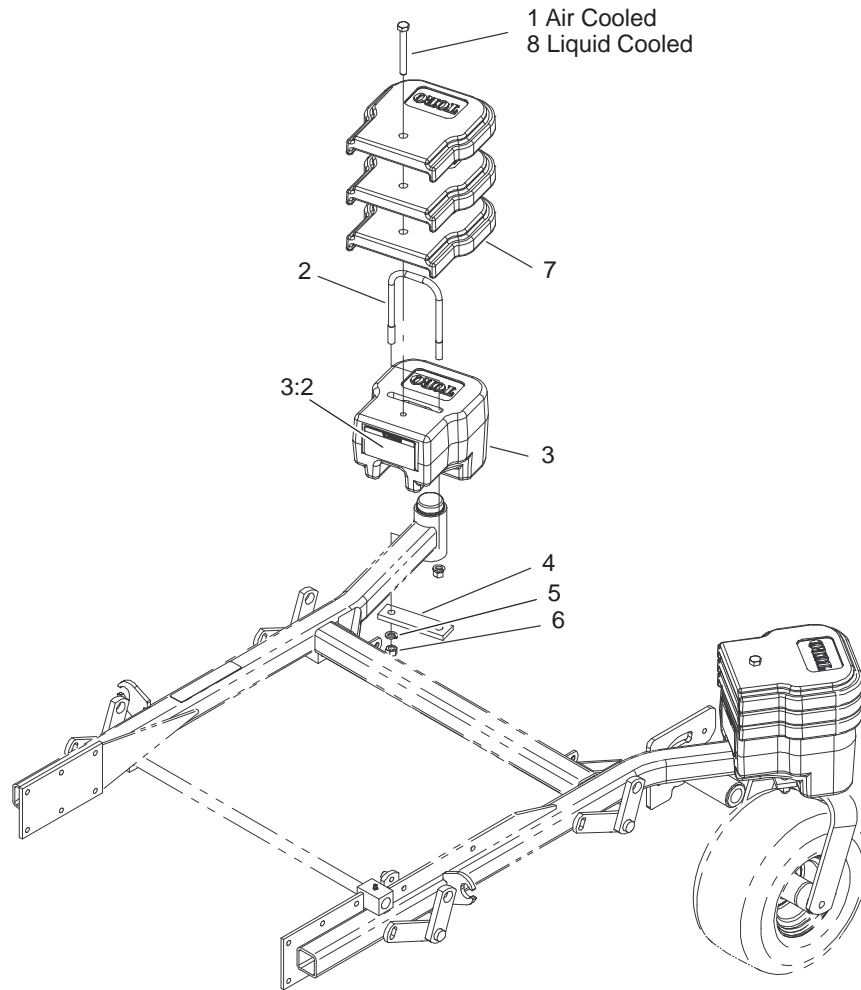
Sheet No.:7

### Drive Assembly

Ref. No.	Part No.	Qty.	Description
1	3217-5	2	Nut-Hex
2	71-2870	1	Bolt-Eye
3	325-5	4	Screw-HH
4	3296-39	2	Nut-Lock, NI
5	1-603402	1	Spring-Extension
6	105-9710	1	V-Belt
7	105-9734	1	Pulley-Driven, A Sect
8	10-8040	2	Key-Square
9	98-5975	2	Washer-Belleville
10	3217-22	1	Nut-Hex
11	105-9732	1	Housing ASM
11:2	105-9684	1	Shaft-Driven Pulley
11:3	104-6325	2	Bearing
12	3296-23	6	Nut-Lock, NI
13	105-9689-03	1	Spacer-Pillow Block, Tubular
14	105-9691-03	2	Spacer-Pillow Block
15	105-9688-03	1	Plate-Support, Pillow
16	325-13	2	Screw-HH
17	3256-26	4	Washer-Flat
18	105-9685	1	Pulley-Driven
19	323-34	1	Screw-HH
20	105-8236-03	1	Plate-Skid
21	322-3	6	Screw-HH
22	323-10	1	Screw-HH
23	3256-24	2	Washer-Flat

Ref. No.	Part No.	Qty.	Description
24	88-5630	1	Idler, Flat
25	323-13	1	Screw-HH
27	105-8225	1	Idler Arm ASM W/Bushings
27:2	109859	2	Bushing
27:3	302-60	1	Fitting-Grease
28	79-2760	1	Spacer
29	105-8227-03	1	Bracket-Idler
32	3296-29	6	Nut-Lock, NI
*33	106-3310-03	1	Template-Jack Shaft

\* Not illustrated



Sheet No.:8

### Weight Assembly

Ref. No.	Part No.	Qty.	Description	Ref. No.	Part No.	Qty.	Description
1	325-17	2	Screw-HH				
2	105-9673	2	U-Bolt				
3	106-3342	2	Weight W/Decal				
3:2	106-3339	1	Decal-Warning, Counter Weight				
4	105-9672-01	2	Plate				
5	3253-27	4	Washer-Lock/Sp				
6	3217-9	4	Nut-HH				
7	105-9741-01	6	Weight-Top, 200				
8	325-12	2	Screw-HH				

PROTOTYPE







*PROTOTYPE*