



# Trans Pro Update Kit Greensmaster® Flex 21

Part No. 105-9900

Form No. 3327-633

## Installation Instructions

1. Remove capscrew, washer and flange nut securing traction cover and spacer to right side plate of mower (Fig. 1). Remove cover.

**Note:** Retain all removed components until kit is completely installed.

2. Carefully remove seal from cover (Fig. 1).
3. Loosen and remove the capscrew, lock washer and flat washer (Fig. 1) securing the idler bracket to the side plate (slotted hole). This will relieve belt tension and allow removal of belt.
4. Remove capscrew, spacer and flange nut securing idler assembly to side plate (Fig. 1).
5. Remove retaining rings and drum pulley from hex shaft (Fig. 1).
6. Insert bar stock or other suitable tool through spokes of drum to keep it from turning. Unscrew hex shaft (Right side- right hand thread, left side- left hand thread) from drum (Fig. 1). Do not misplace spacer between sideplate bearing and drum.
7. Apply anti-seize lubricant to external threads of new hex shaft. Thread hex shaft into spacer and drum (Right side right hand thread, left side left hand thread). Torque shaft to 65-75 ft.-lb (88-102 N-m).
8. Mount existing drum pulley to hex shaft with retaining rings previously removed.
9. Install new idler assembly to side plate with capscrew, spacer and flange nut previously removed.
10. Install belt onto pulleys.
11. Loosely secure idler assembly to side plate with capscrew, lock washer and flat washer previously removed.
12. Using a 3/8 in. drive torque wrench, rotate the idler bracket with 35-40 in.-lb. of torque to set belt tension (Fig. 1). Tighten the idler bracket mounting capscrew. **Do not over-tension belt.**
13. Install previously removed seal into new belt cover.
14. Using capscrew, washer and flange nut previously removed, secure traction cover and spacer to right side plate of mower.
15. Repeat procedure on left side of mower.

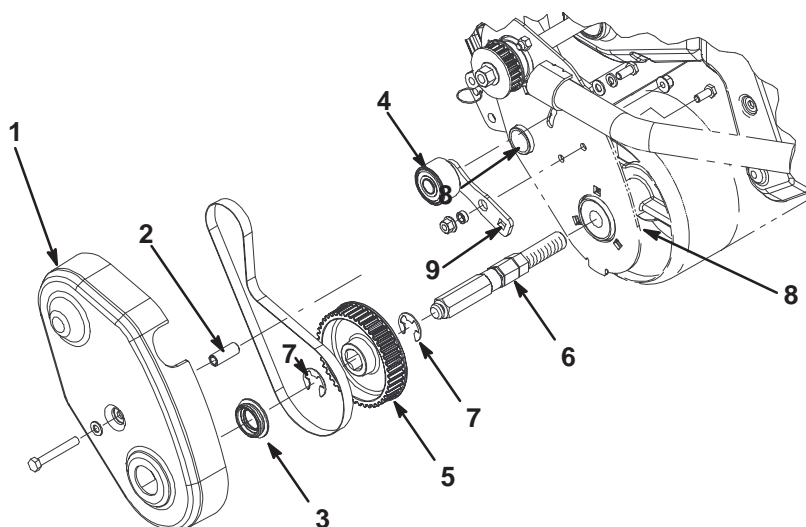


Figure 1

- |                   |                   |                    |                         |
|-------------------|-------------------|--------------------|-------------------------|
| 1. Traction cover | 4. Idler assembly | 6. Hex shaft       | 8. Drum spacer location |
| 2. Cover spacer   | 5. Drum pulley    | 7. Retaining rings | 9. Tension belt here    |
| 3. Seal           |                   |                    |                         |