

1980

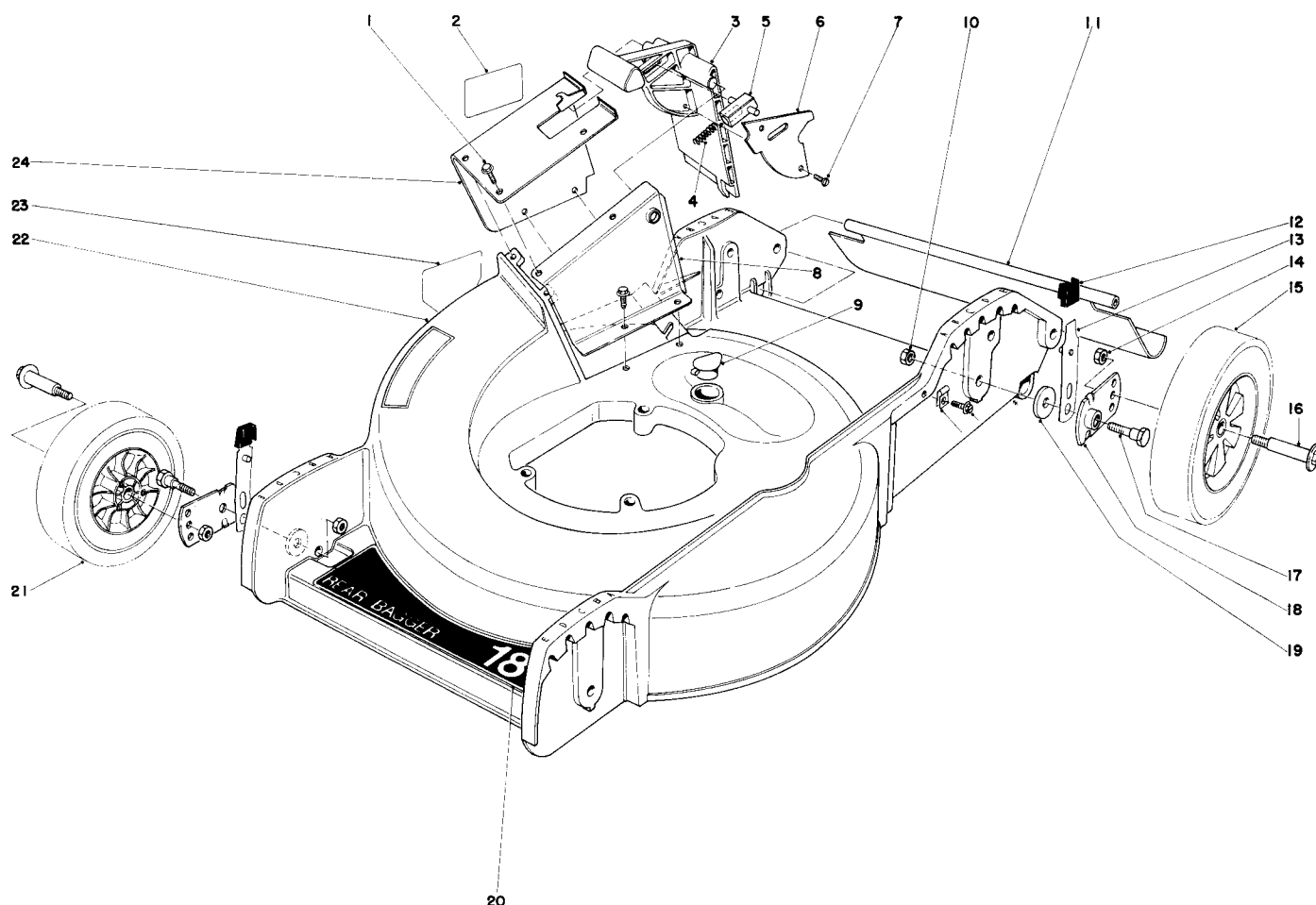
FORM NO. 3311-523



MODEL NO. 20698-0000001 &amp; UP

# **PARTS CATALOG**

## **18" H.P. REAR BAGGER**



## **HOUSING ASSEMBLY**

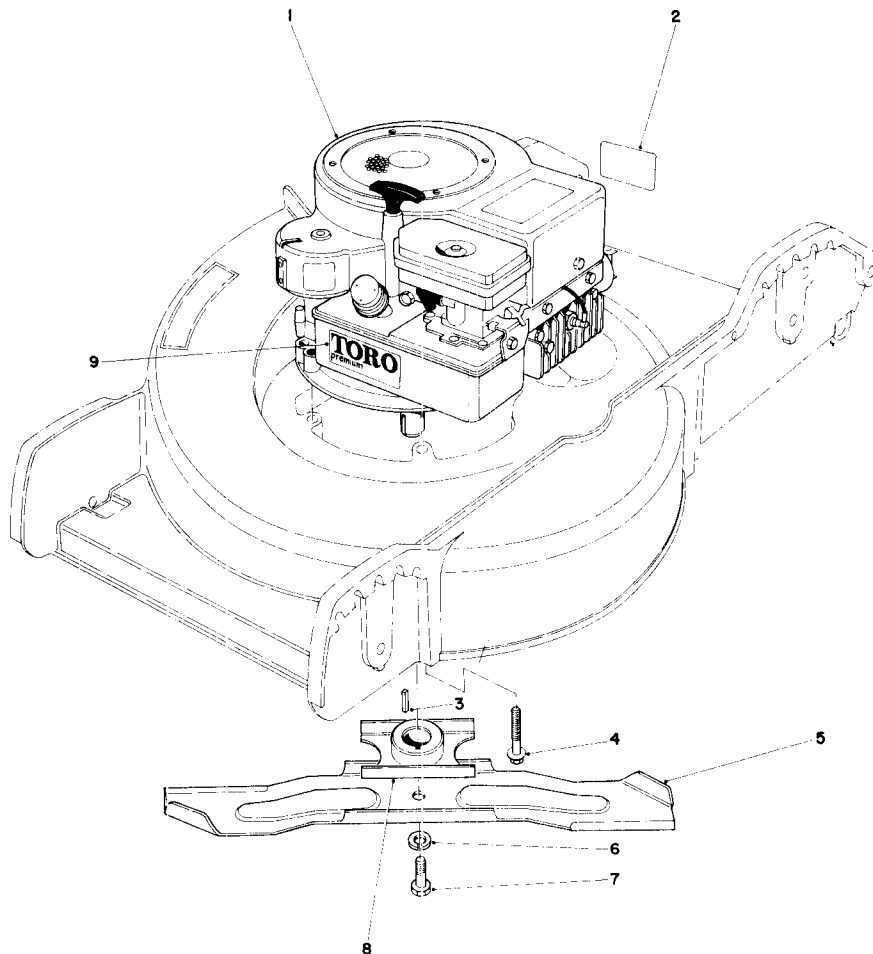
Ref. No.	Part No.	Description	No. Used
1	12-3270	Screw Special	7
2	33-0460	Decal Door	1
3	33-0410	Door Mulching	1
4	33-0450	Latch Spring	1
5	33-0470	Door Latch	1
6	33-0440	Door Cover	1
7	32144-32	Screw	2
8	33-0430	Inner Tunnel	1
9	6-4500	Washout Plug	1
10	32146-5	Nut	4
11	33-2380	Rear Safety Shield	1
12	25-7740	Arm Knob	4
13	25-7890	Spring Arm	4

Ref. No.	Part No.	Description	No. Used
14	32146-6	Nut	4
15	33-5600	Wheel & Tire Assembly	2
16	27-6230	Wheel Bolt	4
17	25-3440	Pivot Screw	4
18	33-0400	Pivot Arm	4
19	33-0390	Pivot Washer	4
20	40-2260	Decal - Rear Bagger	1
21	38-2650	Wheel & Tire Assembly	2
22	8-3529	Housing	1
23	39-5770	Decal - Danger	1
24	33-0420	Tunnel - Outer	1
*	8-7299	Loose Parts	1

\*Not Illustrated

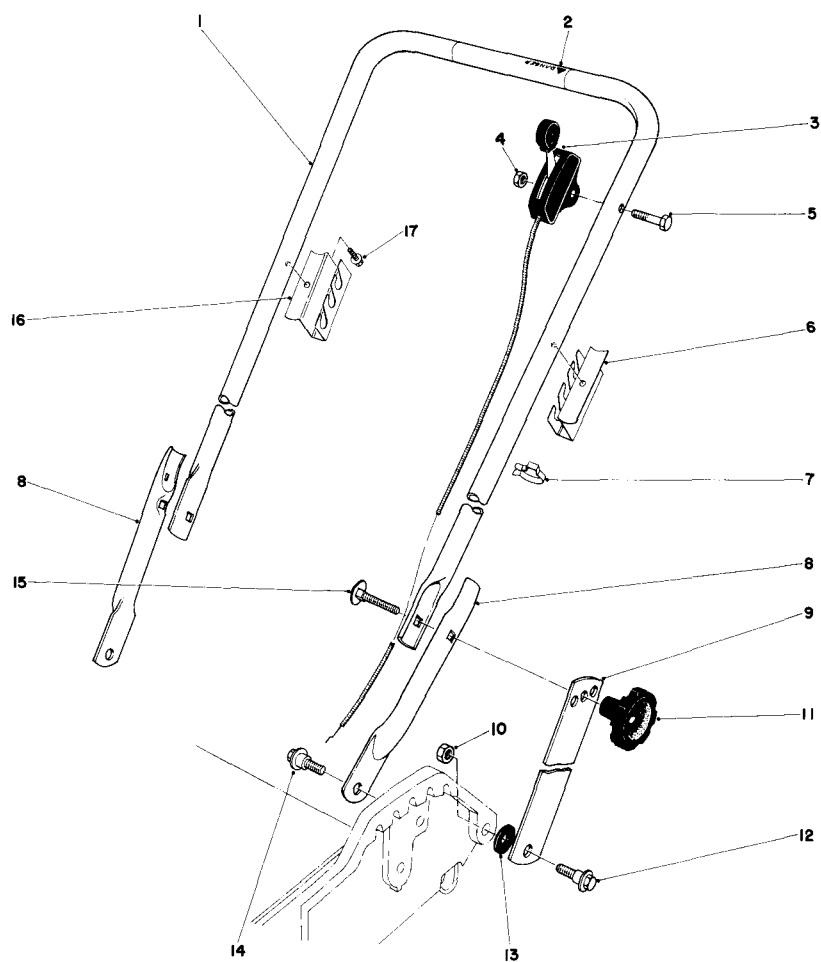
COPYRIGHT © ALL RIGHTS RESERVED  
**The Toro Company - 1979**  
 MINNEAPOLIS, MN 55420 - U.S.A.

**PRICE \$1.00**



## ENGINE ASSEMBLY

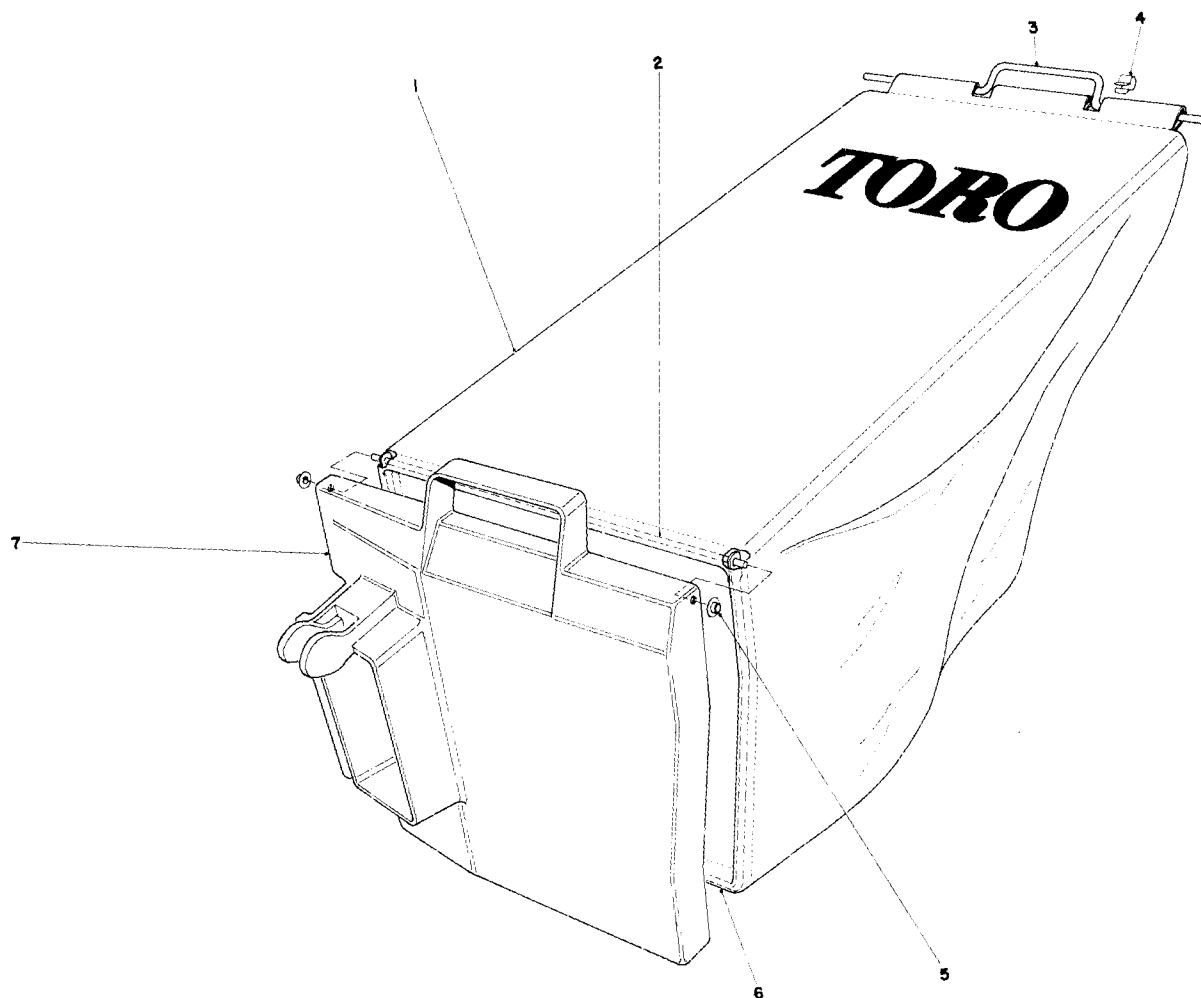
Ref. No.	Part No.	Description	No. Used	Ref. No.	Part No.	Description	No. Used
1	221-580	Engine	1	6	3253-22	Lockwasher	1
2	20-2710	Decal — Maintenance	1	7	3-5246	Screw Special	1
3	27-8590	Key Square	1	8	20-2750	Blade Retainer	1
4	11-0581	Screw	3	9	40-2570	Decal — Toro	1
5	33-0490	Blade	1				



## HANDLE ASSEMBLY

Ref. No.	Part No.	Description	No. Used
1	33-0510	Upper Handle	1
2	29-6290	Decal — Danger	1
3	33-2531	Throttle Control	1
4	32146-17	Locknut	1
5	321-10	Capscrew	1
6	36-0730	Support Bag L.H.	1
7	218-465	Clip	1
8	33-0520	Lower Handle	2
9	33-0530	Handle Latch	2

Ref. No.	Part No.	Description	No. Used
10	32146-5	Locknut	2
11	19-4050	Handle Knob	2
12	27-7210	Shoulder Screw	2
13	3-3287	Spacer Handle Latch	2
14	5-2490	Shoulder Screw	2
15	17-9420	Handle Screw	2
16	36-0740	Bag Support R.H.	1
17	32104-76	Screw	2



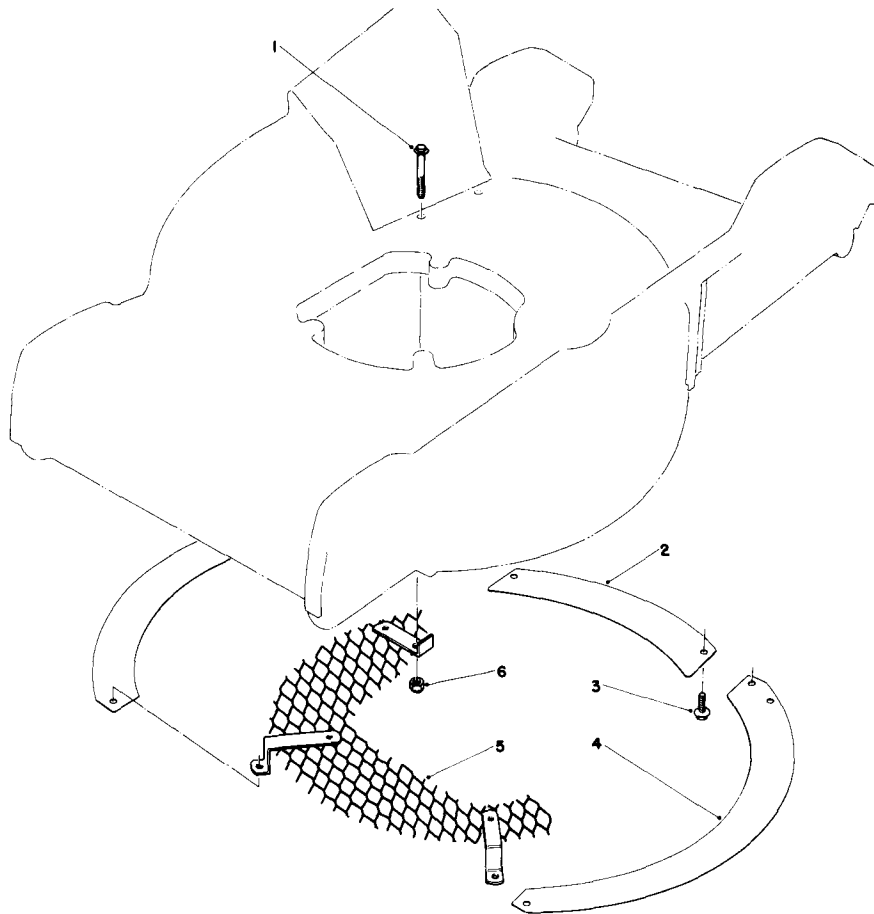
## GRASS BAG ASSEMBLY

Ref. No.	Part No.	Description	No. Used
1	8-0659	Bag	1
2	33-2970	Hinge	1
3	33-2390	Handle Bag	1
4	3290-421	Clip Bag Handle	2

Ref. No.	Part No.	Description	No. Used
5	3290-422	Push Nut Washer Cap	2
6	33-2240	Frame Bag	1
7	33-2980	Door-Bag	1
*	8-0669	Grass Bag Assembly (Incl. Ref. #1-7)	1

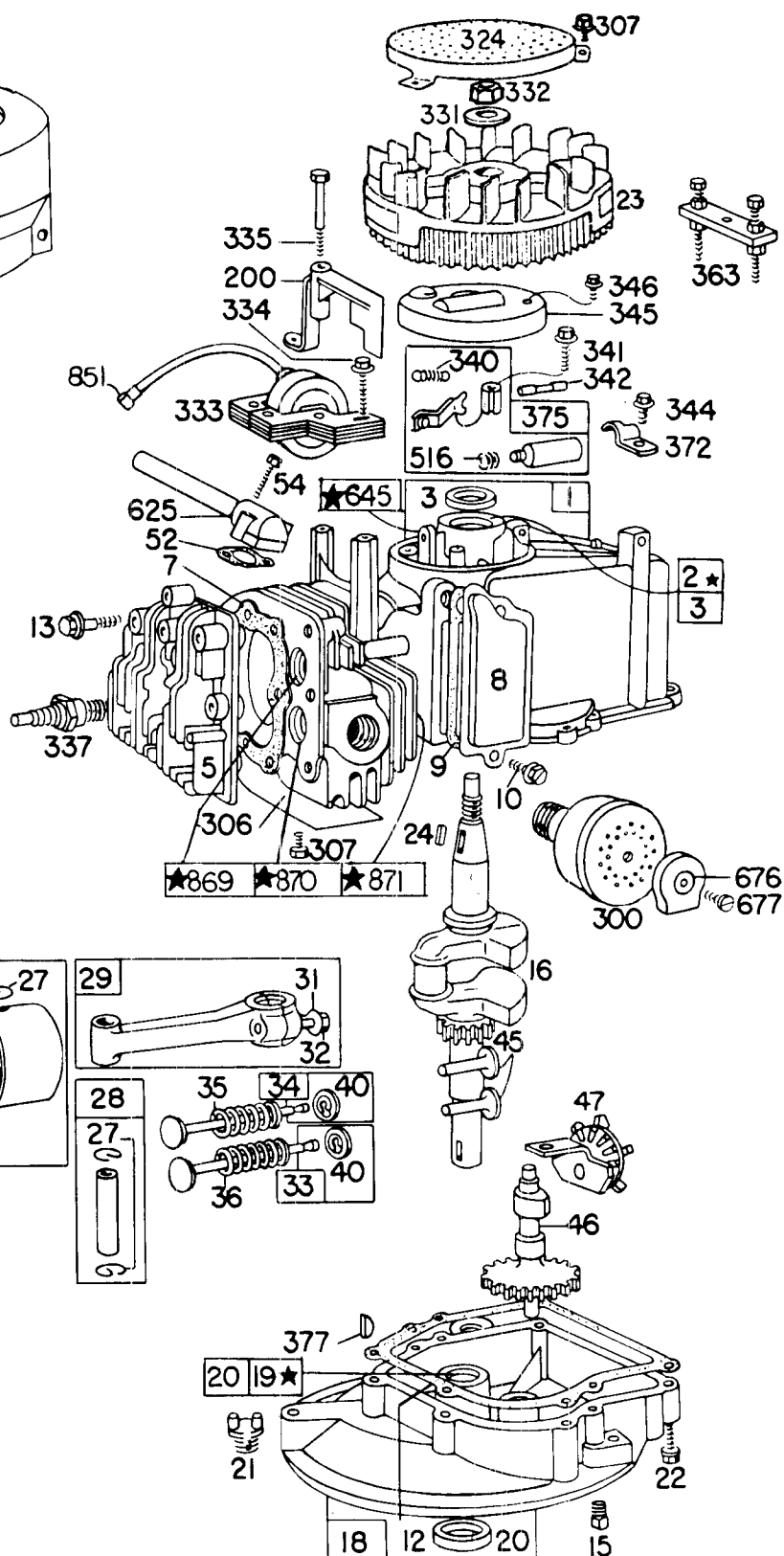
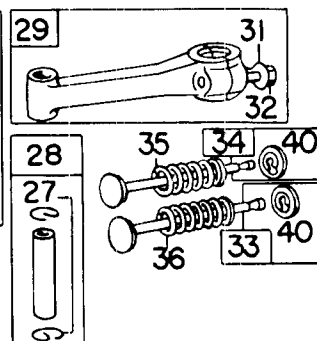
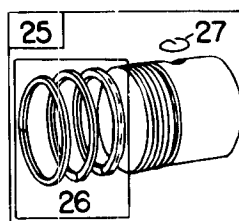
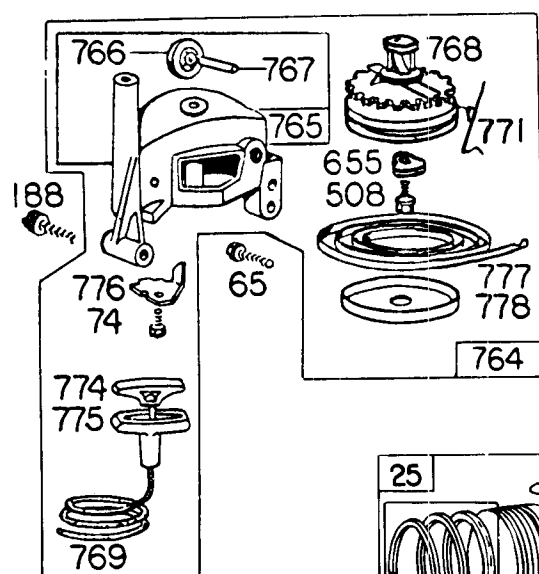
\*Not Illustrated



### LEAF SHREDDER KIT NO. 37-0120 (optional)

Ref. No.	Part No.	Description	No. Used
1	37-7470	Screw	1
2	37-7410	Rear Baffle	1
3	12-3270	Screw	4

Ref. No.	Part No.	Description	No. Used
4	37-7400	Outer Baffle	2
5	37-7450	Screen	1
6	32146-17	Locknut	1



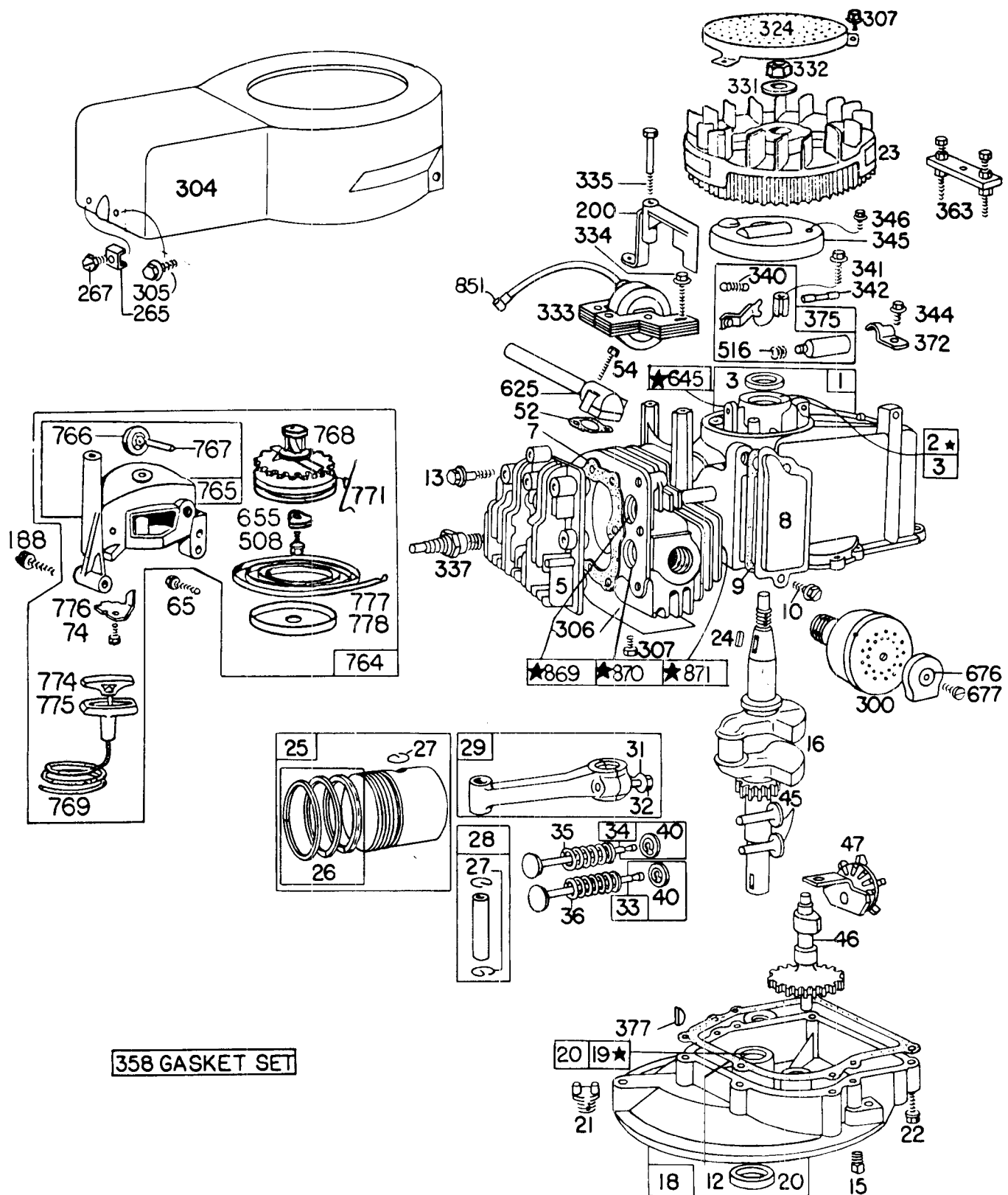
**★NOTE-SPECIAL TOOLS REQUIRED FOR INSTALLING**  
SEE REPAIR INSTRUCTION MANUAL

# ENGINE BRIGGS & STRATTON MODEL NO. 92908-2054-01

Ref. No.	Part No.	Description	No. Used	Ref. No.	Part No.	Description	No. Used
1	298988	Cylinder Assembly	1	29	294201	Rod Assy. — Connecting	
2	293708	Bushing — Cylinder <b>Note:</b> Requires special tools for installation.	1			<b>Note:</b> For Connecting Rod with .020" undersize Crank-pin Bore - order No. 296079	1
3	89660	Seal — Oil	1	31	220756	Lock — Conn. Rod Screw	1
5	211479	Head — Cylinder	1	32	92296	Screw — Connecting Rod	1
7	*270341	Gasket — Cylinder Head	1	33	296676	Valve — Exhaust	1
8	298383	Breather — Valve Chamber	1	34	296677	Valve — Intake	1
9	*270239	Gasket — Valve Cover	1	35	260552	Spring — Intake Valve	1
10	93394	Screw — Breather and P.T.O. Gear Sump Cover (Ref. #86) Mtg. Sem	1	36	26478	Spring — Exhaust Valve	1
				40	93312	Retainer — Valve Spring	1
12	*270833	Gasket — Crankcase — .015" thick (Standard)	1	45	230173	Tappet — Valve	1
	*270895	Gasket — Crankcase — .005" thick	1	46	210453	Gear — Cam	1
	*270896	Gasket — Crankcase — .009" thick	1	47	294652	Oil Slinger Gear and Bracket	1
13	93111	Screw — Cylinder Head (1-15/16" long) <b>Note:</b> 93772 Stud — Cylinder Head (2) 22963 Washer (2) Used on type Nos. 1438, 1597, 1602.	1	52	*270345	Gasket — Intake Elbow	1
15	91084	Plug — Oil Drain (Square Head)	1	54	93485	Screw — Intake Elbow Mtg.	1
16	261293	Crankshaft	1	65	93587	Screw — Vertical Pull Starter Mtg.	1
18	390810	Sump — Oil	1	74	93490	Screw — Sem	1
19	293709	Bushing — Oil Sump <b>Note:</b> Requires Special Tools for Installation	1	188	93585	Screw — Fuel Tank and Starter Mtg.	1
20	291841	Seal — Oil	1	200	68388	Blade — Governor	1
21	66768	Plug — Oil Filler	1	265	22372	Clamp — Casing	1
22	93032	Screw — Sump Mtg. Sem	1	267	93469	Screw — Clamp Mtg.	1
23	299982	Flywheel — Magneto	1	300	391435	Muffler — Exhaust	1
24	61760	Key — Flywheel	1	304	299983	Housing — Blower	1
25	298904	Piston Assy. — Standard	1	305	93559	Screw — Blower Housing Mtg. Sem	1
	298905	Piston Assy. — .010" O.S.	1	306	221805	Shield — Cylinder	1
	298906	Piston Assy. — .020" O.S.	1	307	93490	Screw — Cylinder Shield and Rotating Screen Mtg. Sem	1
	298907	Piston Assy. — .030" O.S.	1	324	222063	Screen — Rotating	1
		<b>MODEL 92900 SERIES</b>		331	220865	Washer — Flywheel	1
		<b>PISTON RING SETS:</b>		332	92284	Nut — Flywheel	1
		<b>Note:</b> For Chrome Piston Ring Set — standard size — order Part No. 299742.	1	333	298502	Armature — Magneto	1
26	298982	Ring Set — Standard Piston	1	334	93381	Screw — Armature Mtg. Sem	1
	298983	Ring Set — .010" O.S. Piston	1	335	93435	Screw — Armature and Governor Blade Mtg. Sem	1
	298984	Ring Set — .020" O.S. Piston	1	337	298809	Plug — Spark (with gasket) 1-1/2" high — (37-42 mm.)	
	298985	Ring Set — .030" O.S. Piston	1			<b>Note:</b> Use Ignition Cable Terminal No. 221798.	1
27	26026	Lock — Piston Pin	1	340	26018	Spring — Breaker Arm	1
28	298909	Pin Assembly — Piston — Standard	1	341	93381	Screw — Breaker Arm Mtg. Sem	1
	298908	Pin Assembly — Piston — .005" O.S.	1	342	65704	Plunger — Breaker Point	1
				344	93042	Screw — Condenser Clamp Mtg. Sem	1
				345	220366	Cover — Breaker Point and Condenser	1
				346	93014	Screw — Dust Cover Mtg.	1
				358	298989	Gasket Set	1
				363	19069	Puller-Flywheel (Opt. Accessory)	1

\*Included in Gasket Set — Part No. 298989.

# ENGINE BRIGGS & STRATTON MODEL NO. 92908-2054-01 (Continued)



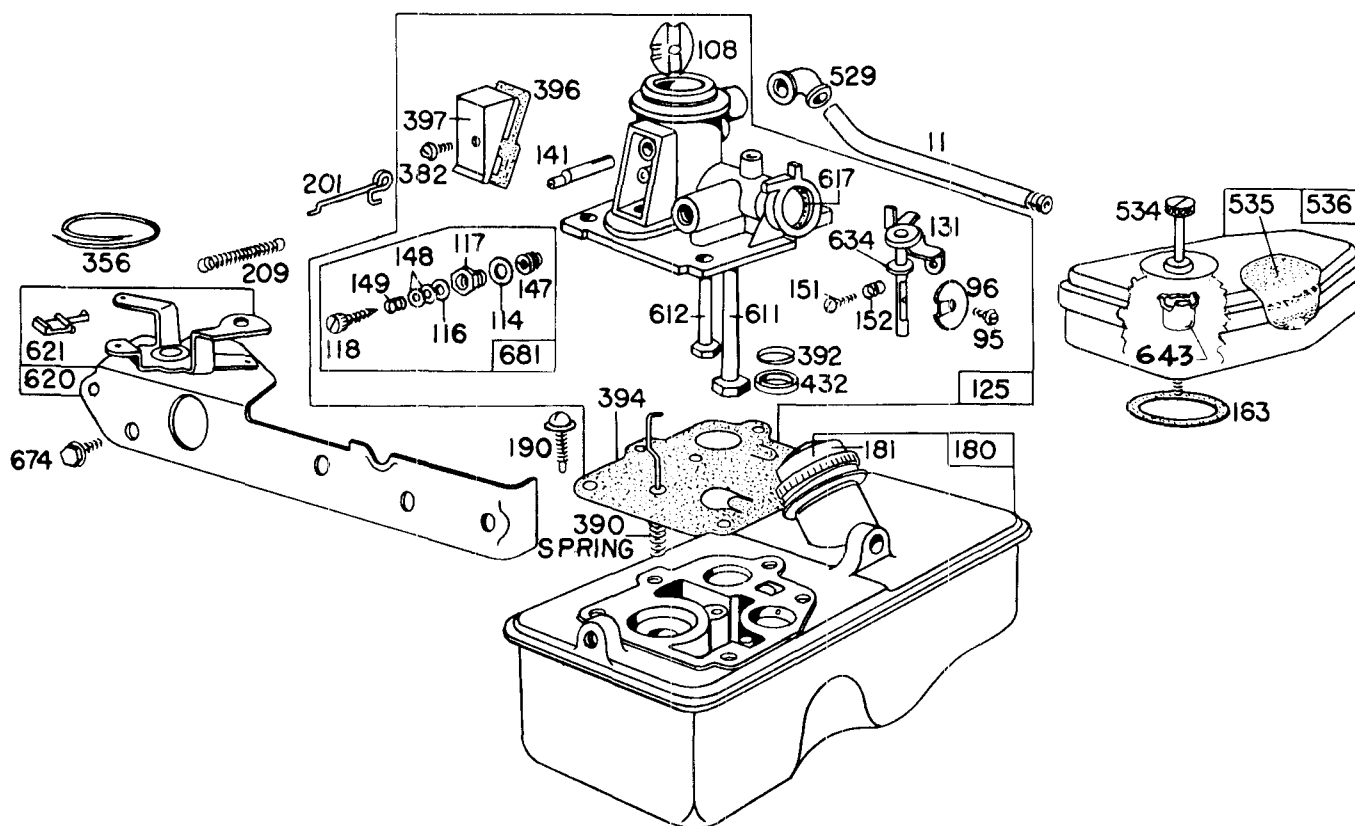
**\*NOTE-SPECIAL TOOLS REQUIRED FOR INSTALLING  
SEE REPAIR INSTRUCTION MANUAL**



# ENGINE BRIGGS & STRATTON MODEL NO. 92908-2054-01 (Continued)

Ref. No.	Part No.	Description	No. Used
372	220477	Clamp — Condenser	1
375	294628	Breaker Points and Condenser Set <b>Note: 299061</b> Ignition Kit Includes: <b>294628</b> Point Set <b>65704</b> Plunger <b>61760</b> Key — Flywheel	1
377	93065	Key — Woodruff No. 6	1
508	93158	Screw — Sem	1
516	260374	Spring Connector	1
625	298775	Tube — Fuel Intake	1
645	23513	Bushing — Plunger	1
655	222057	Anchor — Spring	1
676	222522	Deflector — Muffler	1
677	93705	Screw — Muffler Deflector	1
764	299946	Starter Assembly — Vertical Pull	1
765	299947	Housing — Vertical Pull Starter	1
766	280022	Pulley — Rope (Small)	1
767	231048	Pin — Small Rope Pulley (7/16" Long)	1

Ref. No.	Part No.	Description	No. Used
768	299948	Pulley and Gear Assembly — Starter	1
769	66734	Rope — Vertical Pull Starter	1
771	299961	Clip — Vertical Pull Starter	1
774	280121	Insert — Starter Handle	1
775	280036	Grip — Starter Rope	1
776	222049	Guide — Rope	1
777	390066	Spring — Vertical Pull Starter	1
778	280021	Cover — Vertical Pull Starter Pulley	1
851	221798	Terminal — Ignition Cable	1
869	210879	Seat — Intake Valve (Standard) <b>Note: For installation and options see Repair Manual.</b>	1
870	211291	Seat — Exhaust Valve (Standard) <b>Note: For installation and options see Repair Manual.</b>	1
871	63709	Guide — Exhaust Valve	1



## CARBURETOR ASSEMBLY BRIGGS & STRATTON MODEL NO. 92908-2054-01

Ref. No.	Part No.	Description	No. Used
11	230802	Tube -- Breather	1
95	93499	Screw -- Throttle Valve Mounting Sem	1
96	211237	Valve -- Throttle	1
108	298819	Valve -- Choke	1
114	66594	Gasket -- Needle Valve Nut	1
116	65978	Packing -- Needle Valve	1
117	230590	Nut -- Needle Valve	1
118	23433	Valve -- Needle	1
125	390065	Carburetor Assembly	1
131	299977	Shaft and Lever -- Throttle	1
141	68908	Shaft -- Choke	1
147	230591	Seat -- Needle Valve	1
148	22235	Washer -- Needle Valve	2
149	26336	Spring -- Needle Valve	1
151	93524	Screw -- Rd. Hd. -- 5-40 x 1/2	1
152	260746	Spring -- Throttle Adj.	1
163	270816	Gasket -- Air Cleaner Mtg.	1
180	391694	Tank Assembly -- Fuel	1
181	298425	Cap -- Fuel Tank	1
190	93440	Screw -- Fuel Tank Mtg.	1
201	261027	Link -- Governor	1
209	261105	Spring -- Governor	1

Ref. No.	Part No.	Description	No. Used
356	298479	Wire -- Ground	1
382	93545	Screw -- Choke Link Cover	1
390	261015	Spring -- Diaphragm	1
392	260455	Spring -- Fuel Pump Diaphragm	1
394	391681	Diaphragm -- Carburetor	1
396	270571	Gasket -- Choke Link Cover	1
397	211678	Cover -- Choke Link	1
432	221377	Cap -- Spring	1
529	67838	Grommet Breather	1
534	93374	Screw -- Air Cleaner	1
535	270579	Element -- Air Cleaner	1
536	390055	Cleaner Assembly -- Air	1
611	297219	Pipe -- Fuel (long)	1
612	296811	Pipe -- Fuel (short)	1
617	270344	Seal -- Fuel Intake Tube	1
620	299974	Plate -- Carburetor Control	1
621	297472	Switch -- Stop	1
634	270167	Washer -- Throttle Shaft (Felt)	1
643	221321	Cup -- Air Cleaner	1
674	93447	Screw -- Tank to Bracket	1
681	299060	Needle Valve Kit	1

# The Toro Promise

## A ONE YEAR LIMITED WARRANTY

*The Toro Company promises to repair any TORO Product if defective in materials or workmanship. The following time periods from the date of purchase apply:*

Residential Product . . . . . 1 Year  
Residential Products Used Commercially . . . 45 Days

*The costs of parts and labor are included, but the customer pays the transportation costs. Just return any residential product to an Authorized TORO Service Dealer or TORO Distributor.*

Should you feel your TORO Product is defective and wish to rely on The Toro Promise, the following procedure is recommended:

1. Contact any Authorized TORO Service Dealer, TORO Master Service Dealer, or TORO Distributor (the Yellow Pages of your telephone directory is a good reference source).
2. He will either instruct you to return the product to him or recommend another Authorized TORO Service outlet which might be more convenient.
3. Bring the product along with your original sales slip, or other evidence of purchase date, to the service dealer.
4. The servicing dealer will inspect the unit, advise you whether the product is defective and, if so, make all repairs necessary to correct the defect without extra charge to you.

If for any reason you are dissatisfied with the dealer's analysis of the defect or the service performed, you may contact us.

Write:

TORO Consumer Service Department  
8111 Lyndale Avenue South  
Minneapolis, Minnesota 55420

The above remedy of product defects through repair by an Authorized TORO Service Dealer is the purchaser's sole remedy for any defect.

**THERE IS NO OTHER EXPRESS WARRANTY. ALL IMPLIED WARRANTIES OF MERCHANTABILITY AND FITNESS FOR USE ARE LIMITED TO THE DURATION OF THE EXPRESS WARRANTY.**

Some states do not allow limitations on how long an implied warranty lasts, so the above limitation may not apply to you.

This warranty applies only to parts or components which are defective and does not cover repairs necessary due to normal wear, misuse, accidents, or lack of proper maintenance. Regular, routine maintenance of the unit to keep it in proper operating condition is the responsibility of the owner.

All warranty repairs reimbursable under The Toro Promise must be performed by an Authorized TORO Service Dealer using Toro approved replacement parts.

Repairs or attempted repairs by anyone other than an Authorized TORO Service Account are not reimbursable under The Toro Promise. In addition, these unauthorized repair attempts may result in additional malfunctions, the correction of which is not covered by warranty.

**THE TORO COMPANY IS NOT LIABLE FOR INDIRECT, INCIDENTAL OR CONSEQUENTIAL DAMAGES IN CONNECTION WITH THE USE OF THE PRODUCT INCLUDING ANY COST OR EXPENSE OF PROVIDING SUBSTITUTE EQUIPMENT OR SERVICE DURING PERIODS OF MALFUNCTION OR NON-USE.**

Some states do not allow the exclusion or limitation of incidental or consequential damages, so the above limitation or exclusion may not apply to you.

This warranty gives you specific legal rights, and you may also have other rights which vary from state to state.

### COUNTRIES OTHER THAN THE UNITED STATES OR CANADA

Customers who have purchased TORO products exported from the United States or Canada should contact their TORO Distributor (Dealer) to obtain guarantee policies for your country, province or state. If for any reason you are dissatisfied with your Distributor's service or have difficulty obtaining guarantee information, contact

the TORO importer. If all other remedies fail, you may contact us at The Toro Company.

International Group  
Service Department  
One Corporate Center  
7401 Metro Boulevard  
Minneapolis, Minnesota 55435 U.S.A.

## PRODUCT CHANGES

In an effort to make improvements available to TORO owners as quickly as possible, minor changes are incorporated into Toro's products from time to time that do not become immediately shown in the Parts Catalog. If such a change apparently has been made in your unit, which is not reflected in your manual, see your TORO Distributor or his Authorized TORO Service Dealer for information and part numbers.

## IDENTIFICATION AND ORDERING

### Model and Serial Numbers

The Mower has two identification numbers: a model number and a serial number. The two numbers are stamped on a decal which is located on the mower housing between the rear wheels. In any correspondence concerning the mower, supply model and serial numbers to assure that correct information and replacement parts are obtained.

To order replacement parts from an Authorized TORO Service Dealer, supply the following information:

1. Model and serial numbers of the mower.
2. Part number, description, and quantity of part(s) desired.

**Note:** Do not order by reference number if a parts catalog is being used; use the PART NUMBER.

***Keep Your TORO All Toro***



***Insist on Genuine Toro Parts***

## MAINTENANCE RECORD

Date	Hours Used	Oil Change	Air Cleaner Service	Lubrication	Winter Storage	Spring Service	Spark Plug Gap