



Electric Drive Kit

Spreader Base, Workman® 3000 and 4000 Series

Model No. 41255

Parts Catalog

Ordering Replacement Parts

To order replacement parts, please supply: the part number, the quantity, and the description of each part desired.

Understanding Reference Numbers

Each identified part in an illustration has a reference number. The reference number for a part also appears in the parts list, along with other information about the part.

This catalog uses two special reference number formats, one to indicate parts in a service assembly and another to indicate the quantity of a given part in an illustration.

Service Assembly Reference Numbers

Parts in service assemblies have reference numbers in the form **a:b**. The **a** represents the reference number of the entire service assembly and the **b** represents a sequential number unique to each part within the service assembly.

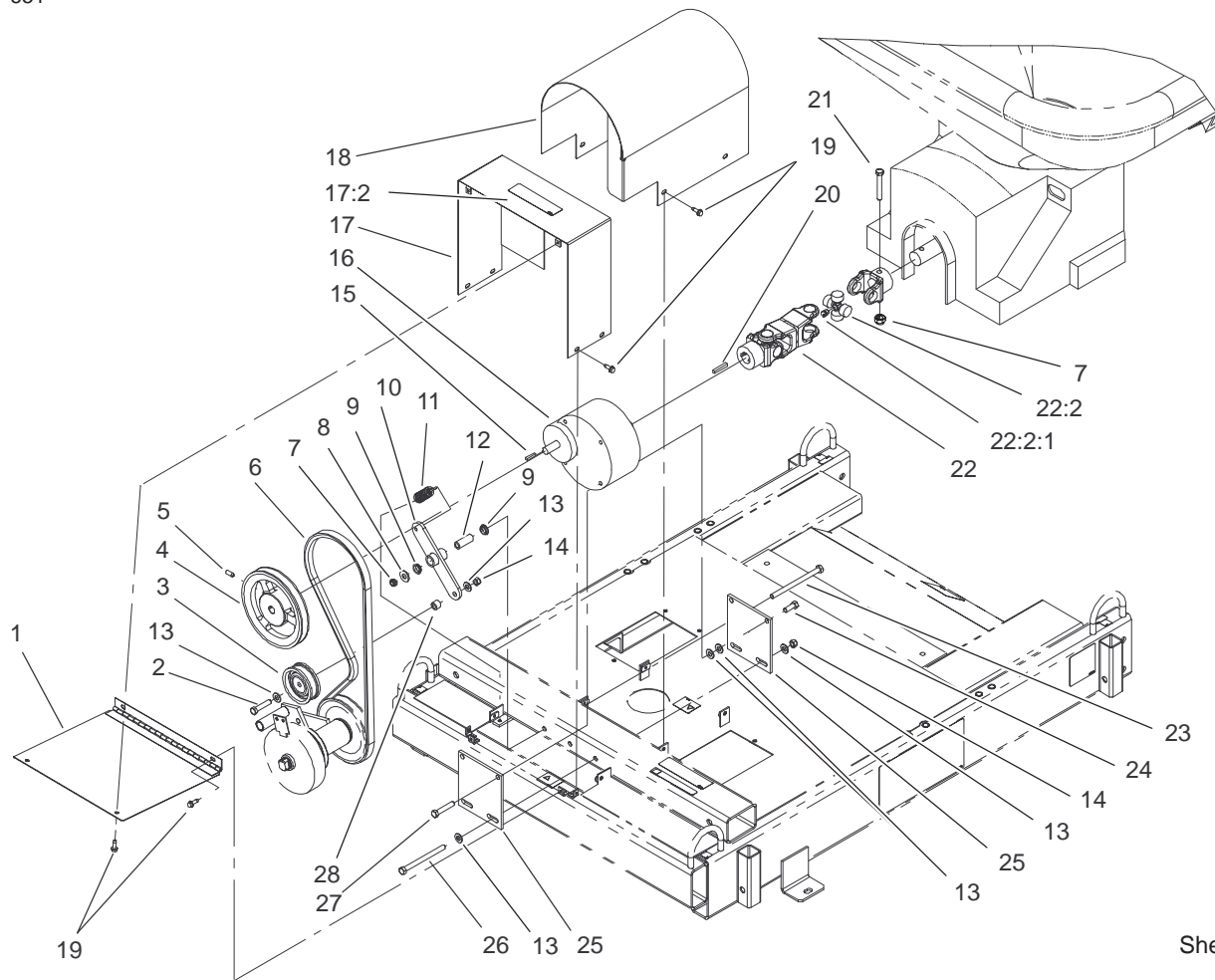
For example, a wheel assembly might be identified by reference number **6**, the tire by **6:1**, the valve by **6:2**, and the wheel by **6:3**. When you order the assembly identified by reference number **6**, you receive all parts identified by reference numbers **6:1**, **6:2**, and **6:3**. However, you may also order any part individually.

Reference numbers of this type appear in illustrations and in part lists.

Reference Numbers Indicating Quantity

In an illustration, if a reference number indicates more than one part, the reference number has the form **nX y**. The **n** represents the quantity of the part, the **X** is the multiplication symbol, and the **y** represents the reference number.

For example, in an illustration, the reference number **2X 37** means that two of the parts identified by reference number **37** are indicated.

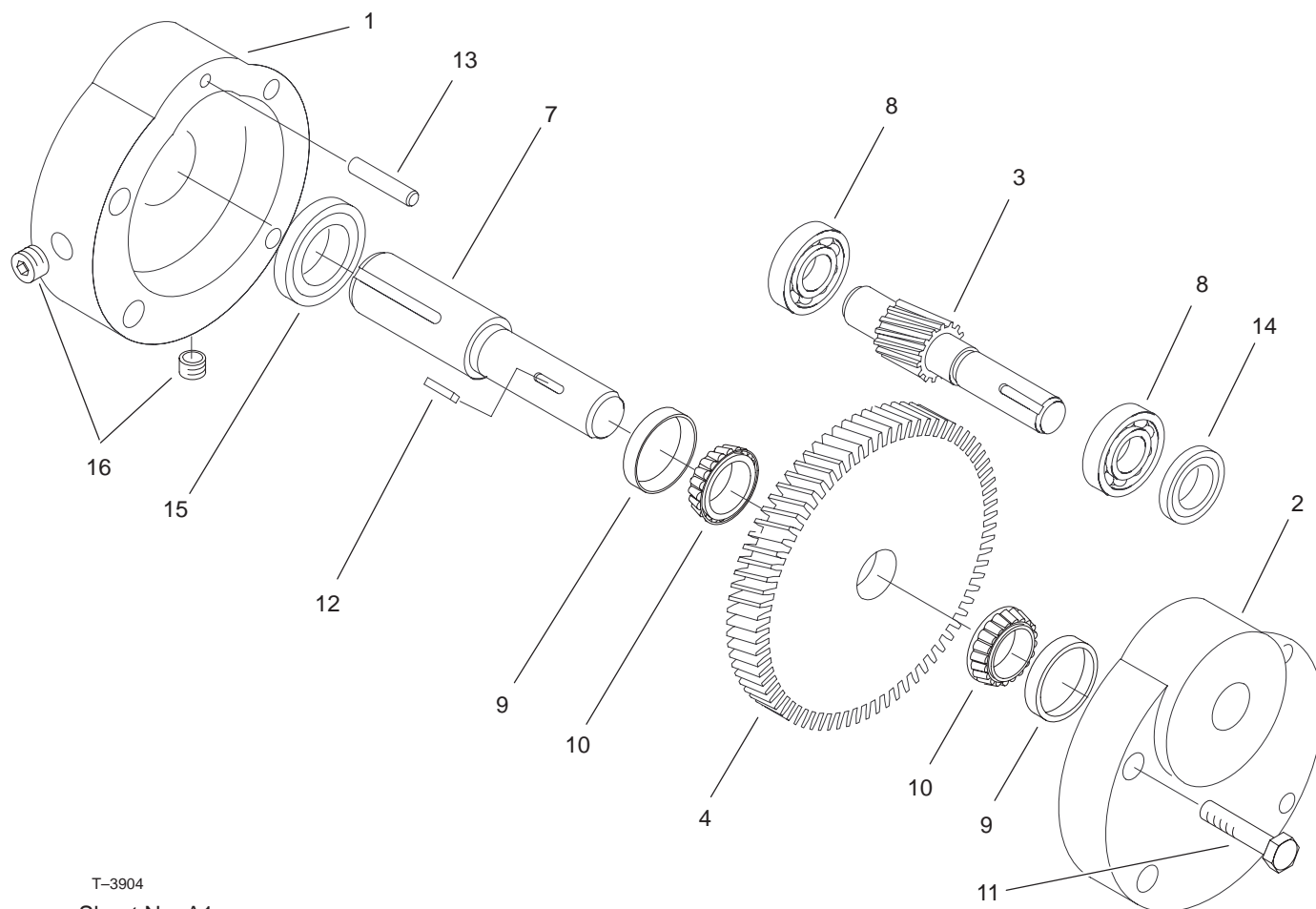


Sheet No.:2

Electric Drive Kit Assembly

Ref. No.	Part No.	Qty.	Description
1	92-8219-03	1	Door-Cover, Belt
2	323-9	1	Screw-HH
3	041353	1	Pulley-Idler
4	92-8204-03	1	Pulley-Spreader
5	3246-6	2	Screw-Set, HSH
6	92-8249	1	Belt-Drive
7	3296-59	2	Nut-Lock, NI
8	3256-4	1	Washer-Flat
9	86-9320	2	Bushing-Flange
10	92-8199-03	1	Idler Arm ASM
11	54-2730	1	Spring-Extension
12	92-8202-03	1	Tube-Sleeve
13	3256-24	10	Washer-Flat
14	32153-2	3	Nut-Lock
15	5-1077	1	Key-Square
16	043003	1	Gearbox
17	106-2253	1	Belt Cover ASM
17:2	93-7814	1	Decal-Danger
18	105-9485-03	1	Cover-Drive Shaft
19	32104-95	12	Screw-HWH
20	67-7490	1	Key
21	323-12	1	Screw-HH
22	105-9536	1	Drive Shaft ASM
22:2	54-9180	2	U-Joint Kit
22:2:1	62-3820	1	Fitting-Grease

Ref. No.	Part No.	Qty.	Description
23	323-25	1	Screw-HH
24	323-6	2	Screw-HH
25	92-8205-03	2	Plate-Gearbox
26	323-38	2	Screw-HH
27	323-10	2	Screw-HH
28	41488-03	1	Spacer-Pulley



T-3904
Sheet No.:A1

Gearbox Assembly No. 043003

Ref. No.	Part No.	Qty.	Description
1	43047	1	Half-Housing
2	43048	1	Half-Housing
3	43049	1	Gear
4	43050	1	Gear
*5	43051	2	Shim .002
*6	43052	2	Shim .005
7	43053	1	Shaft-Output
8	43054	2	Bearing
9	43055	2	Cup-Bearing
10	43056	2	Cone-Bearing
11	323-9	4	Screw-HH
12	43057	1	Key
13	43058	2	Pin-Dowel
14	43061	1	Seal
15	43060	1	Seal
16	43059	4	Plug-Pipe

Ref. No.	Part No.	Qty.	Description

* Not illustrated

