



Cab Kit

Workman® MD/MDE/MDX/MDXD Utility Vehicle

Model No. 07320—Serial No. 411900000 and Up

Installation Instructions

Important: For 2016 and newer machines, you must install the heavy-duty springs that are supplied with the Cab Kit in order to use the cab on a Workman MD/MDE/MDX/MDXD utility vehicle. For 2015 and older machines, discard the springs included in this kit and order 2 springs (Toro Part No. 117-4847) from your authorized Toro distributor.

For Workman MDE machines, the 12 V Plug Adapter Kit (sold separately) must be installed on the machine; refer to the *Installation Instructions* for the kit.

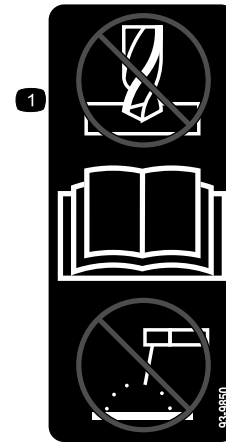
The springs should be installed only by qualified Toro Service Technicians using approved tools. Improper removal, disassembly, or installation of the spring assembly poses a danger to you and bystanders. Please contact your authorized Toro distributor for the appropriate tools and proper installation of this kit.

Safety

Safety and Instructional Decals



Safety decals and instructions are easily visible to the operator and are located near any area of potential danger. Replace any decal that is damaged or missing.



93-9850

decal93-9850

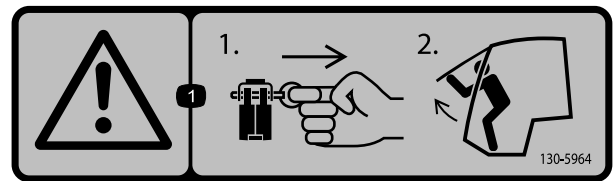
1. Do not repair or revise—read the *Operator's Manual*.





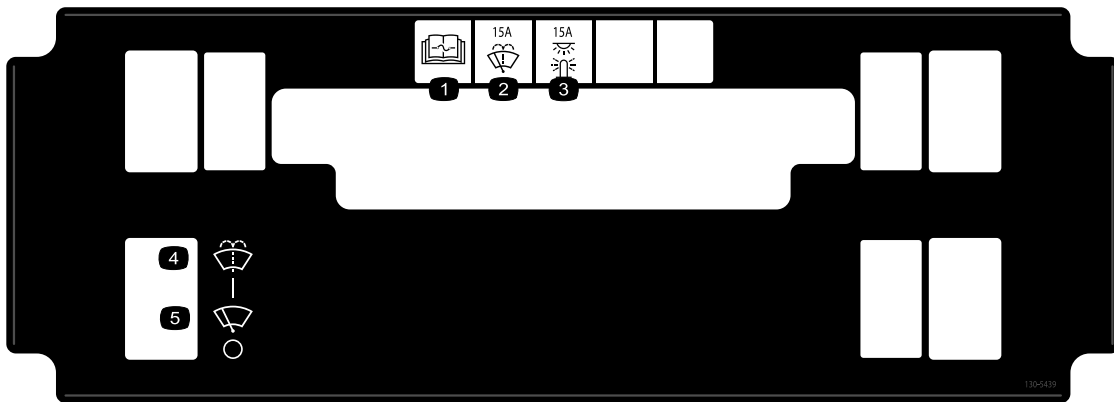
117-4955

1. Warning—read the *Operator's Manual*; wear the seat belt when seated in the operator's position; avoid tipping the machine.
2. Warning—wear hearing protection.



130-5964

1. Warning—in the event of an emergency 1) Pull the locking pin out of each hinge; 2) Push the front window out to exit.



130-5439

1. Read the *Operator's Manual* for information on fuses.
2. Windshield wiper (15 A)
3. Lights (15 A)
4. Windshield spray
5. Windshield wiper

Installation

Loose Parts

Use the chart below to verify that all parts have been shipped.

Procedure	Description	Qty.	Use
1	No parts required	–	Prepare the machine.
2	No parts required	–	Remove the strut assembly (for 2016 and newer machines only).
3	Spring	2	Install the springs (for 2016 and newer machines only).
4	No parts required	–	Install the strut assembly (for 2016 and newer machines only).
5	Compression spring	2	Install the compression spring (for 2015 and older machines only).
6	No parts required	–	Remove the ROPS assembly.
7	Floor mount Nut (3/8 inch) Bolt (3/8 x 1 inch) Bolt (5/16 inch) Nut (5/16 inch) Bolt (3/8 x 7/8 inch) Washer	2 6 4 2 2 2 2	Install the floor mounts.
8	Cab frame Bolts (3/8 x 7/8 inch) Bolt (3/8 x 3/4 inch) Nuts (3/8 inch)	1 4 10 10	Install the cab frame.
9	Side-plate panels Bolts (1/4 inch) Side-plate foam panel	2 4 2	Install the side panels.
10	Seat-belt anchor Bolts (3/8 x 3/4 inch) Nuts (3/8 inch) Seat-belt receiver end Bolt (7/16 inch) Nut (7/16 inch) Seat-belt bracket Seat belt Bolt (3/8 x 7/8 inch)	2 4 4 2 4 4 2 2 2	Install the seat shroud.
11	Wire harness Clip tie Plug Fuse (30 A)	1 1 1 1	Route the wire harness.

Media and Additional Parts

Description	Qty.	Use
12 V Power Plug Adapter Kit	1	This kit is needed for the Workman MDE Utility Vehicle only.

1

Preparing the Machine

No Parts Required

Procedure

1. Park the machine on a level surface.
2. Engage the parking brake.
3. Raise the bed until the bed prop rod is fully engaged; refer to your *Operator's Manual*.
4. Shut off the engine and remove the key.
5. Disconnect the battery; refer to the *Operator's Manual* for the machine.

2

Removing the Strut Assembly (for 2016 and Newer Machines Only)

No Parts Required

Procedure

1. Raise the front of the machine off the ground and support it with jack stands.
2. Remove the front wheel.
3. Remove the hex-head bolt (3/8 x 4-3/4 inches) and flange nut (3/8 inch) from the spindle (Figure 1).
4. Remove the hex-head bolt (3/8 x 3-1/2 inches) and flange nut (3/8 inch) from the control arm (Figure 1).
5. Remove the hex-head bolt (1/2 x 2-1/4 inches) and locknut (1/2 inch) securing the strut assembly to the upper frame (Figure 1).
6. Remove the strut assembly (Figure 1).

Note: Repeat this procedure for the other side of the machine.

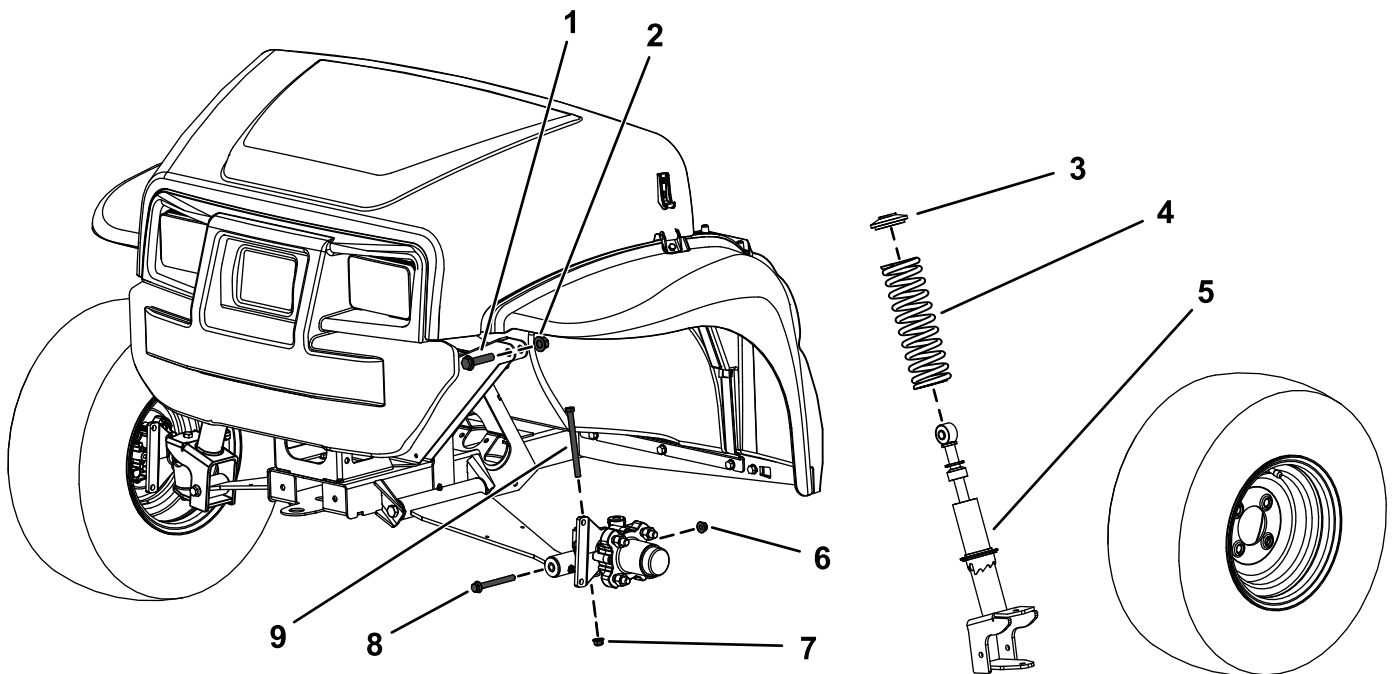


Figure 1

- | | |
|---------------------------------------|--|
| 1. Hex-head bolt (1/2 x 2-1/4 inches) | 6. Flange nut (3/8 inch)—from the control arm |
| 2. Locknut (1/2 inch) | 7. Flange nut (3/8 inch)—from the spindle |
| 3. Collar | 8. Hex-head bolt (3/8 x 3-1/2 inches)—from the control arm |
| 4. Spring | 9. Hex-head bolt (3/8 x 4-3/4 inches)—from the spindle |
| 5. Strut assembly | |

g206327

3

Installing the Springs (for 2016 and Newer Machines Only)

Parts needed for this procedure:

2	Spring
---	--------

Procedure

Use an approved Toro spring-compression tool to remove and install springs of the strut assembly. Contact your authorized Toro distributor.

1. Place the strut assembly into the compression tool and use the tool to compress the spring.
2. While the spring is compressed, remove the collar.
3. Remove the spring from the strut assembly (Figure 1).
4. Install the new spring over the existing strut assembly (Figure 1).
5. Using the Toro spring-compression tool, compress the spring.
6. While the spring is compressed, install the collar.
7. Carefully release pressure on the spring, allowing it to seat on the collar.
8. Remove the strut assembly from the compression tool.

Note: Repeat this procedure for the other side of the machine.

4

Installing the Strut Assembly (for 2016 and Newer Machines Only)

No Parts Required

Procedure

1. Install strut assembly to the machine.

2. Secure the upper portion of the strut assembly to the frame using the upper, hex-head bolt (1/2 x 2-1/4 inches) and locknut (1/2 inch) as shown in Figure 1.
3. Torque the hex-head bolt (1/2 x 2-1/4 inches) to 91 to 113 N·m (67 to 83 ft-lb).
4. Install the hex-head bolt (3/8 x 4-3/4 inches) and flange nut (3/8 inch) to the spindle (Figure 1).
5. Torque the hex-head bolt (3/8 x 4-3/4 inches) to 37 to 45 N·m (27 to 33 ft-lb).
6. Secure the lower portion of the strut assembly to the control arm using the hex-head bolt (3/8 x 3-1/2 inches) and flange nut (3/8 inch) as shown in Figure 1.
7. Torque the hex-head bolt (3/8 x 3-1/2 inches) to 37 to 45 N·m (27 to 33 ft-lb).
8. Install the front wheel.

Note: Repeat this procedure for the other side of the machine.

5

Installing the Compression Spring (for 2015 and Older Machines Only)

Parts needed for this procedure:

2	Compression spring
---	--------------------

Procedure

Use an approved Toro spring-compression tool to remove and install springs of the strut assembly. Contact your authorized Toro distributor.

Important: For 2015 and older machines, discard the springs included in this kit and order 2 springs (Toro Part No. 117-4847) from your authorized Toro distributor.

1. Raise the front of the machine off the ground and support it with jack stands.
2. Remove the current shock assemblies as shown in Figure 2.

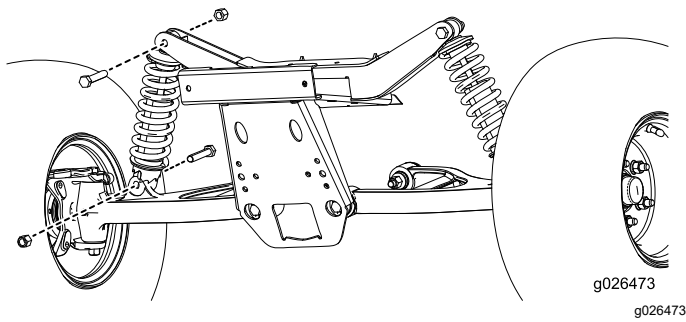


Figure 2

3. Using a spring compressor, remove the current springs and install the springs from this kit.
 4. Install the shock assemblies and turn them 3 clicks up from the longest position.
- Note:** Refer to the *Service Manual* for further instructions on replacing the spring and checking the front end toe of the tires.
5. Torque the bolts to 95 to 122 N·m (70 to 90 ft-lb).

6

Removing the ROPS Assembly

No Parts Required

Procedure

If your machine does not have a ROPS assembly, proceed to [7 Installing the Floor Mounts \(page 7\)](#).

Remove the bolts and nuts that secure the ROPS assembly to the frame of the machine as shown in [Figure 3](#) and remove the ROPS assembly.

Note: Do not remove the seat-belt anchors that are secured on the frame.

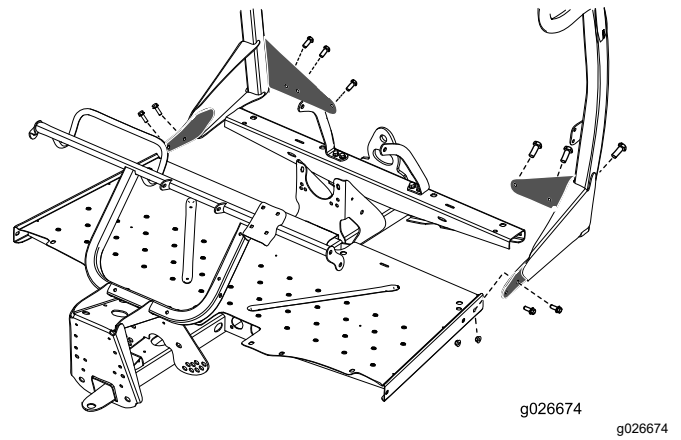


Figure 3

7

Installing the Floor Mounts

Parts needed for this procedure:

2	Floor mount
6	Nut (3/8 inch)
4	Bolt (3/8 x 1 inch)
2	Bolt (5/16 inch)
2	Nut (5/16 inch)
2	Bolt (3/8 x 7/8 inch)
2	Washer

Procedure

1. Secure the floor panels to the frame as shown in [Figure 4](#).

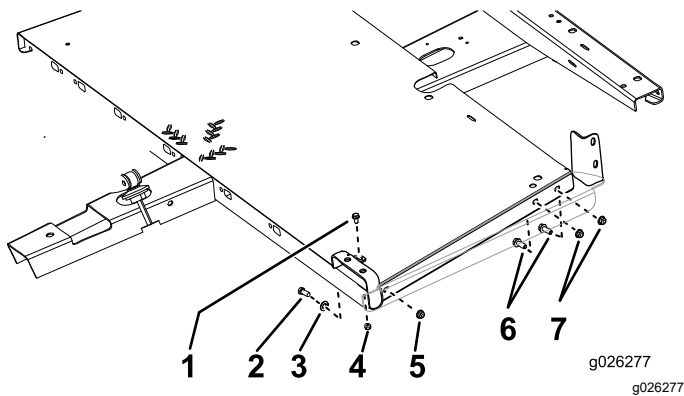


Figure 4

- | | |
|--------------------------|------------------------|
| 1. Bolt (5/16 inch) | 5. Nut (3/8 inch) |
| 2. Bolt (3/8 x 7/8 inch) | 6. Bolt (3/8 x 1 inch) |
| 3. Washer | 7. Nut (3/8 inch) |
| 4. Nut (5/16 inch) | |

- Torque the 2 bolts (3/8 x 7/8 inch) and 4 bolts (3/8 x 1 inch) to 37 to 45 N·m (27 to 33 ft-lb).
- Torque the 2 bolts (5/16 inch) to 1978 to 2543 N·cm (175 to 225 in-lb).

8

Installing the Cab Frame

Parts needed for this procedure:

1	Cab frame
4	Bolts (3/8 x 7/8 inch)
10	Bolt (3/8 x 3/4 inch)
10	Nuts (3/8 inch)

Procedure

- Lift the cab frame using the lifting points and place it on the machine (Figure 5).

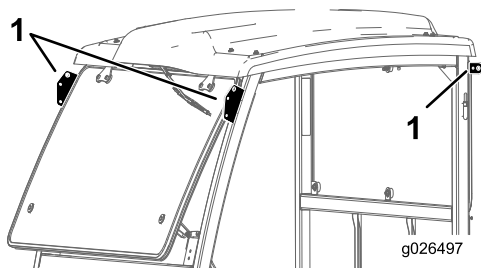


Figure 5

- Lifting points

- Secure the frame to the machine using 10 bolts (3/8 x 3/4 inch), 10 nuts (3/8 inch), and 4 bolts (3/8 x 7/8 inch) as shown in Figure 6.

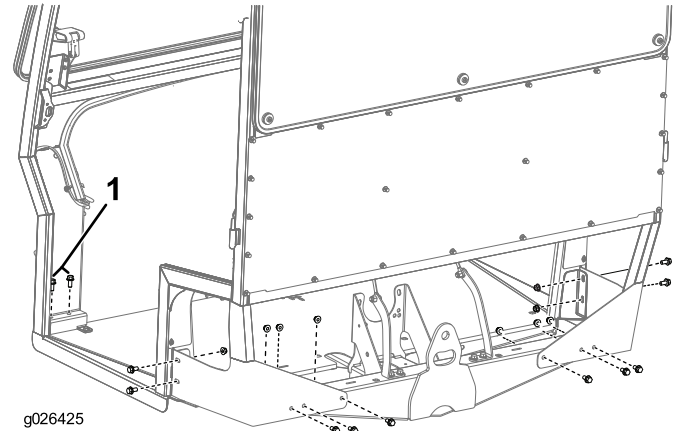


Figure 6

- Bolt (3/8 x 7/8 inch)
- Torque the bolts to 37 to 45 N·m (27 to 33 ft-lb).

9

Installing the Side Panels

Parts needed for this procedure:

2	Side-plate panels
4	Bolts (1/4 inch)
2	Side-plate foam panel

Procedure

- Fasten the mounting plates onto the cab using 4 bolts (1/4 inch) as shown in Figure 7.
- Torque the bolts to 1017 to 1243 N·cm (90 to 110 in-lb).
- Remove the paper backing from the double stick tape on the mounting plates (Figure 7).

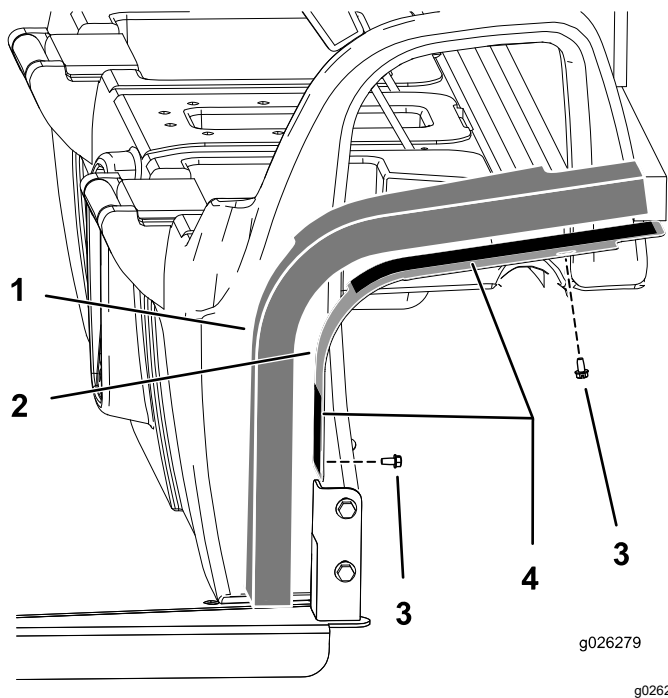


Figure 7

1. Foam panel
2. Mounting plates
3. Bolts (1/4 inch)
4. Double-stick tape

4. Install the foam panels onto the assembly (Figure 7).

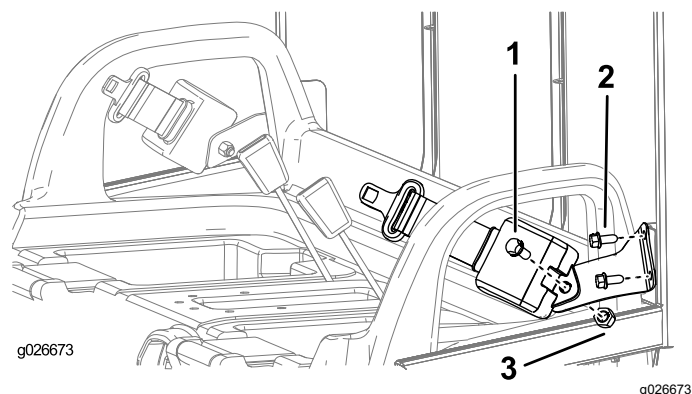


Figure 8

1. Bolt (7/16 inch)
2. Bolt (3/8 x 7/8 inch)
3. Nut (7/16 inch)

2. Torque the 4 bolts (3/8 inch) to 37 to 45 N·m (27 to 33 ft-lb).
3. Mount the retractable end of each seat-belt assembly to each seat-belt anchor bracket with a bolt (7/16 inch) and a nut (7/16 inch) as shown in Figure 8.

Note: If your machine came equipped with a ROPS assembly, the seat-belt anchors are already installed; proceed to [11 Routing the Wire Harness \(page 10\)](#).

4. Torque the 2 bolts (7/16 inch) to 67 to 83 N·m (49 to 61 ft-lb).
5. Secure the left and right seat-belt anchor to the front frame with 4 bolts (3/8 x 3/4 inch) and 4 nuts (3/8 inch) as shown in Figure 9.

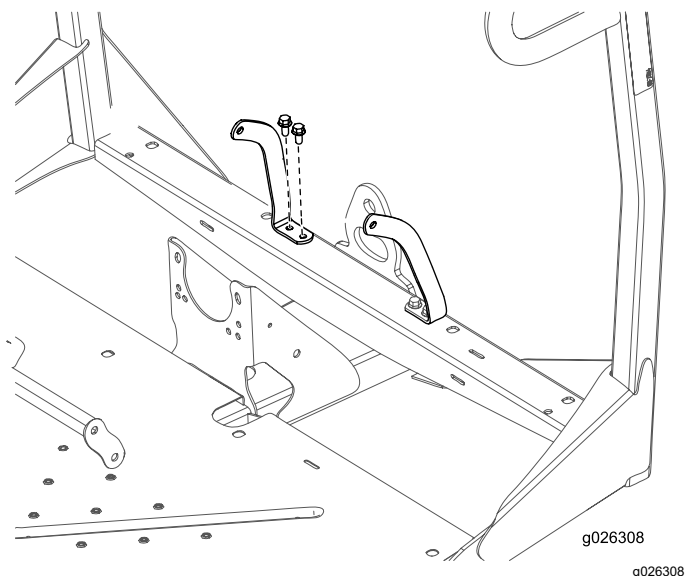


Figure 9

6. Torque the 4 bolts (3/8 x 3/4 inch) to 37 to 45 N·m (27 to 33 ft-lb).

10

Installing the Seat Belts

Parts needed for this procedure:

2	Seat-belt anchor
4	Bolts (3/8 x 3/4 inch)
4	Nuts (3/8 inch)
2	Seat-belt receiver end
4	Bolt (7/16 inch)
4	Nut (7/16 inch)
2	Seat-belt bracket
2	Seat belt
2	Bolt (3/8 x 7/8 inch)

Procedure

1. Mount a seat-belt bracket to each ROPS tab with 2 bolts (3/8 inch) as shown in Figure 8.

7. Using the dimensions shown in [Figure 10](#), locate, mark, and drill 2 holes in the top of the seat shroud.

Important: Use caution when drilling these holes; electrical components and control cables are located under the seat shroud.

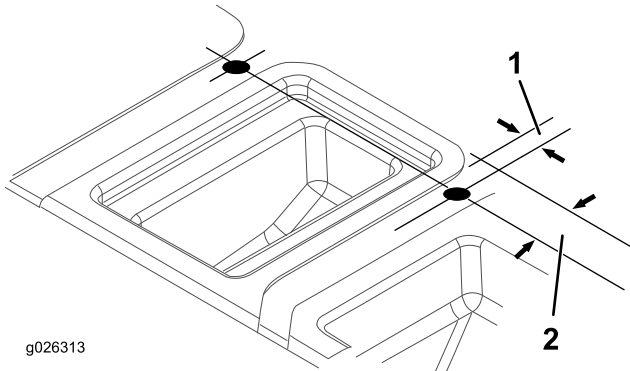


Figure 10

1. 21 mm (13/16 inch)
2. 51 mm (2 inches)

8. Insert the mounting side of the receiver end of each seat-belt lock assembly into one of the newly drilled holes in the seat base ([Figure 11](#)).

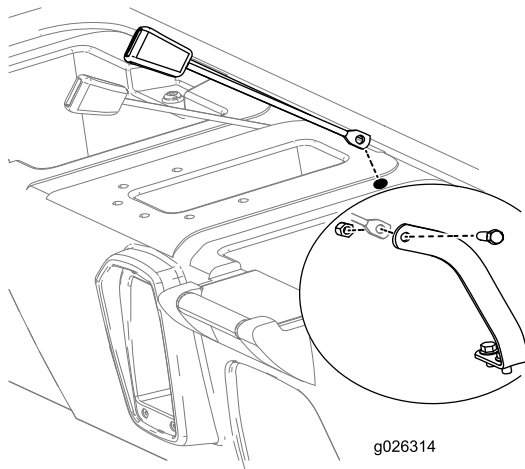


Figure 11

9. Mount the receiver end of each seat-belt assembly to each seat-belt anchor with a bolt (7/16 inch) and nut (7/16 inch) as shown in [Figure 11](#).
10. Torque the bolts to 67 to 83 N·m (49 to 61 ft-lb).

11

Routing the Wire Harness

Parts needed for this procedure:

1	Wire harness
1	Clip tie
1	Plug
1	Fuse (30 A)

Procedure

Note: For Workman MDE machines, the 12 V Plug Adapter Kit (sold separately) must be installed on the machine; refer to the *Installation Instructions* for the kit.

1. Route the wire harness via 1 of the 2 following options:
 - Route the wire harness under the control panel (Box A of [Figure 12](#)). Install the clip tie in the lower hole on the side panel and the plug in the top hole.
 - Drill a hole into the console, install the clip tie in the top hole on the side panel, and install the plug into the lower hole (Box B of [Figure 12](#)).

Important: Use caution when drilling this hole; electrical components and control cables are located under the seat shroud.

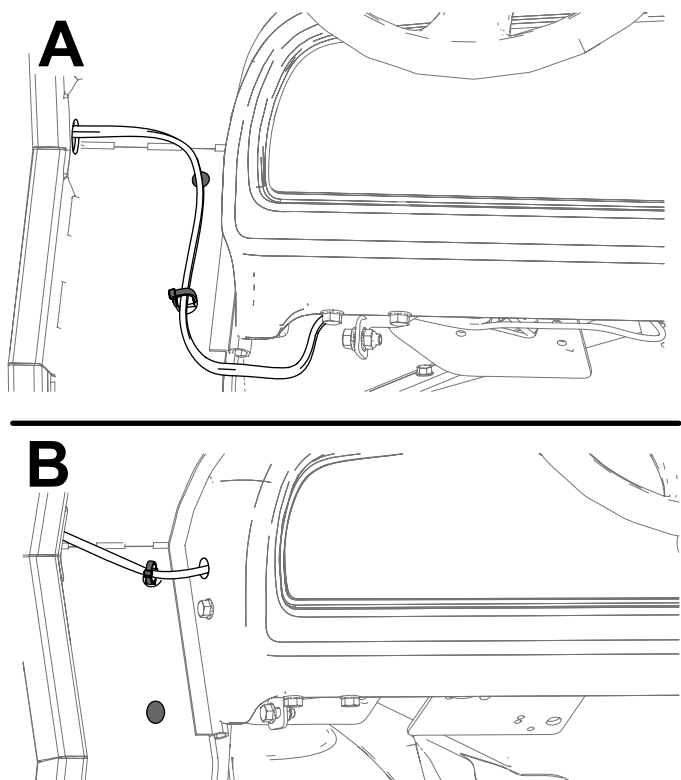


Figure 12

g416543

2. **For Workman MDX/MDXD machines:** Connect the ring terminal on the harness to the grounding block on the center dash support (A of [Figure 14](#)) and insert the fuse-block connector and the fuse (30 A) into an available fuse-block connection (B of [Figure 14](#)).

Note: If there is not an available fuse-block connection, you need to add a fuse block to the fuse-block grouping. Contact your Authorized Service Dealer for more information.

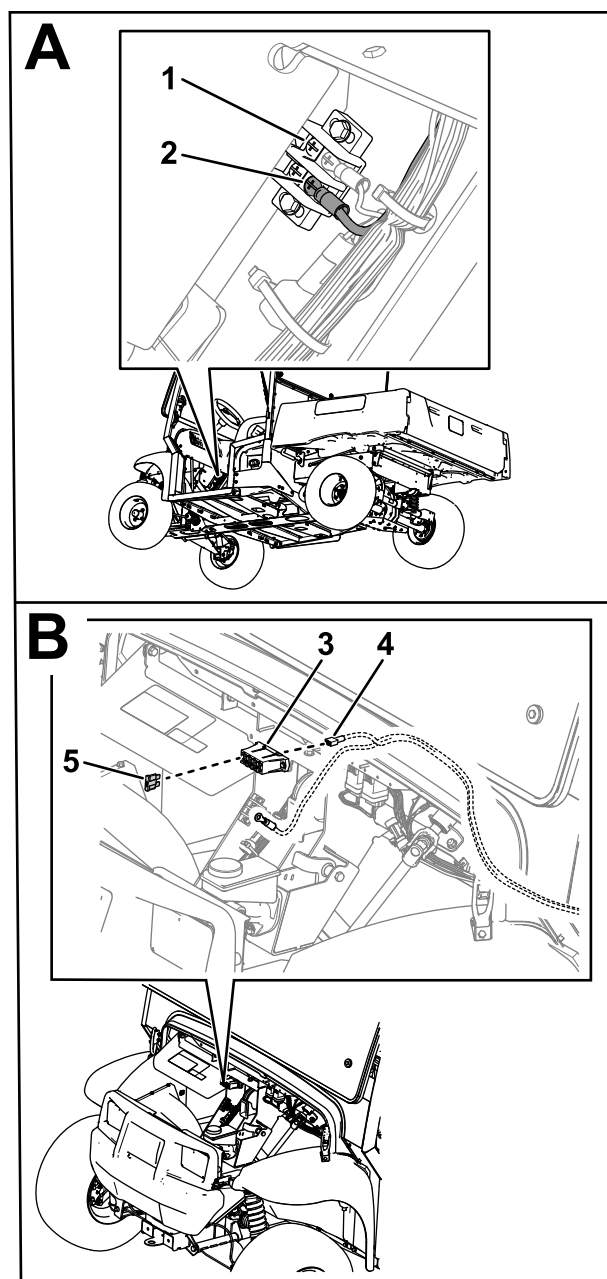


Figure 13

g416733

- | | |
|------------------|-------------------------|
| 1. Ground block | 4. Fuse-block connector |
| 2. Ring terminal | 5. Fuse (30 A) |
| 3. Fuse block | |

3. **For Workman MD/MDE machines:** Connect the ring terminal on the harness to the grounding block and insert the fuse-block connector and the fuse (30 A) into an available fuse-block connection ([Figure 14](#)).

Note: If there is not an available fuse-block connection, you need to add a fuse block to the fuse-block grouping. Contact your authorized Toro distributor for more information.

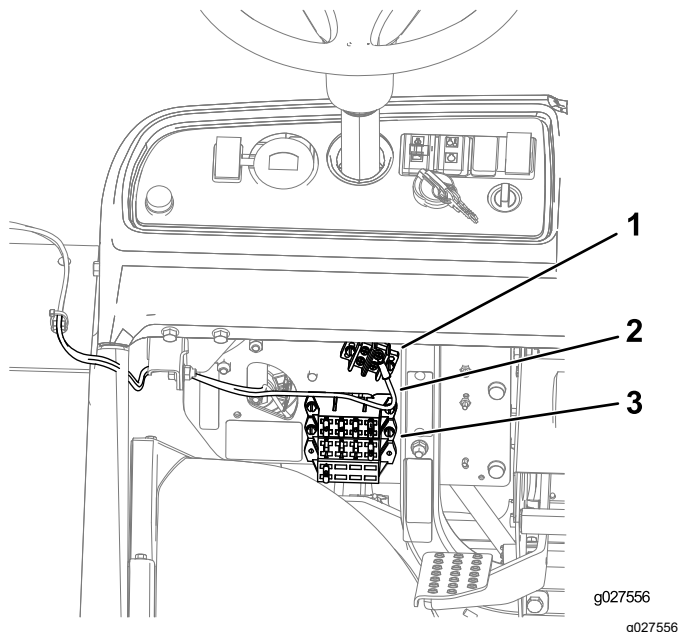


Figure 14

- | | |
|------------------|---------------|
| 1. Ground block | 3. Fuse block |
| 2. Ring terminal | |

Workman MDE only:

- A. Connect the power-adaptor harness to the wire harness ([Figure 15](#)).
- B. Connect the power-adaptor harness and the ground-adaptor harness to the wire harness from the 12 V Plug Adapter Kit.

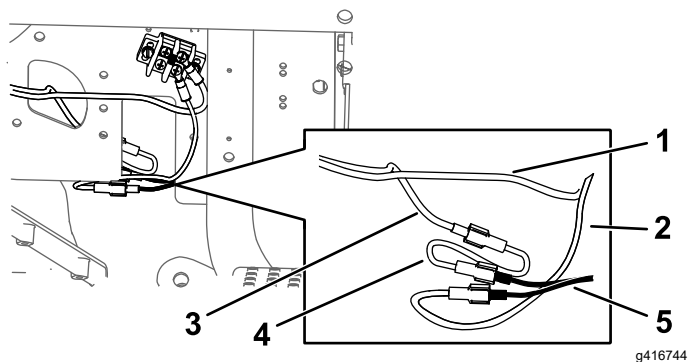


Figure 15

- | | |
|---------------------------|--|
| 1. Ring terminal | 4. Power-adaptor harness |
| 2. Ground-adaptor harness | 5. Wire harness from the 12 V Plug Adapter Kit |
| 3. Wire harness | |
-
4. Connect the battery and lower the bed; refer to the *Operator's Manual*.

Product Overview

Controls

Control Panel

Windshield-Wiper Switch

Push the top of the switch to activate the windshield wipers ([Figure 16](#)).

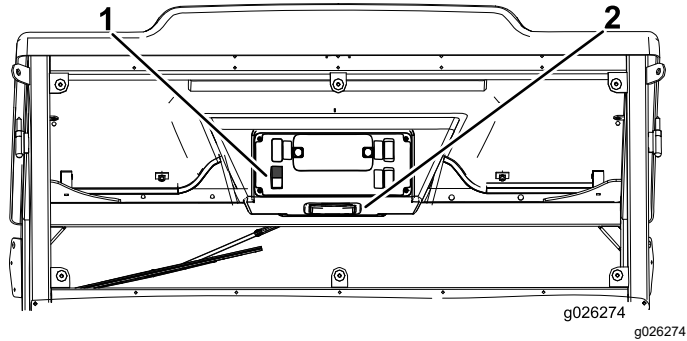


Figure 16

1. Windshield-wiper switch 2. Light switch

Light Switch

Push the light plate to turn on the light ([Figure 16](#)).

Windshield Latch

Lift up the latches to open the windshield ([Figure 17](#)). Press in the latch to lock the windshield in the open position. Pull out and down on the latch to close and secure the windshield.

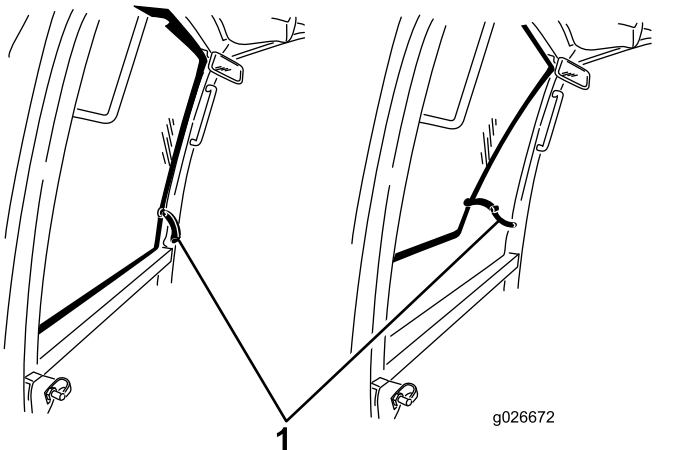


Figure 17

1. Windshield latch

Notes:

EEA/UK Privacy Notice

Toro's Use of Your Personal Information

The Toro Company ("Toro") respects your privacy. When you purchase our products, we may collect certain personal information about you, either directly from you or through your local Toro company or dealer. Toro uses this information to fulfil contractual obligations - such as to register your warranty, process your warranty claim or to contact you in the event of a product recall - and for legitimate business purposes - such as to gauge customer satisfaction, improve our products or provide you with product information which may be of interest. Toro may share your information with our subsidiaries, affiliates, dealers or other business partners in connection these activities. We may also disclose personal information when required by law or in connection with the sale, purchase or merger of a business. We will never sell your personal information to any other company for marketing purposes.

Retention of your Personal Information

Toro will keep your personal information as long as it is relevant for the above purposes and in accordance with legal requirements. For more information about applicable retention periods please contact legal@toro.com.

Toro's Commitment to Security

Your personal information may be processed in the US or another country which may have less strict data protection laws than your country of residence. Whenever we transfer your information outside of your country of residence, we will take legally required steps to ensure that appropriate safeguards are in place to protect your information and to make sure it is treated securely.

Access and Correction

You may have the right to correct or review your personal data, or object to or restrict the processing of your data. To do so, please contact us by email at legal@toro.com. If you have concerns about the way in which Toro has handled your information, we encourage you to raise this directly with us. Please note that European residents have the right to complain to your Data Protection Authority.



The Toro Warranty

Two-Year or 1,500 Hours Limited Warranty

Conditions and Products Covered

The Toro Company warrants your Toro Commercial product ("Product") to be free from defects in materials or workmanship for 2 years or 1,500 operational hours*, whichever occurs first. This warranty is applicable to all products with the exception of Aerators (refer to separate warranty statements for these products). Where a warrantable condition exists, we will repair the Product at no cost to you including diagnostics, labor, parts, and transportation. This warranty begins on the date the Product is delivered to the original retail purchaser.

* Product equipped with an hour meter.

Instructions for Obtaining Warranty Service

You are responsible for notifying the Commercial Products Distributor or Authorized Commercial Products Dealer from whom you purchased the Product as soon as you believe a warrantable condition exists. If you need help locating a Commercial Products Distributor or Authorized Dealer, or if you have questions regarding your warranty rights or responsibilities, you may contact us at:

Toro Commercial Products Service Department
8111 Lyndale Avenue South
Bloomington, MN 55420-1196

952-888-8801 or 800-952-2740

E-mail: commercial.warranty@toro.com

Owner Responsibilities

As the product owner, you are responsible for required maintenance and adjustments stated in your *Operator's Manual*. Repairs for product issues caused by failure to perform required maintenance and adjustments are not covered under this warranty.

Items and Conditions Not Covered

Not all product failures or malfunctions that occur during the warranty period are defects in materials or workmanship. This warranty does not cover the following:

- Product failures which result from the use of non-Toro replacement parts, or from installation and use of add-on, or modified non-Toro branded accessories and products.
- Product failures which result from failure to perform recommended maintenance and/or adjustments.
- Product failures which result from operating the Product in an abusive, negligent, or reckless manner.
- Parts consumed through use that are not defective. Examples of parts which are consumed, or used up, during normal Product operation include, but are not limited to, brake pads and linings, clutch linings, blades, reels, rollers and bearings (sealed or greasable), bed knives, spark plugs, castor wheels and bearings, tires, filters, belts, and certain sprayer components such as diaphragms, nozzles, flow meters, and check valves.
- Failures caused by outside influence, including, but not limited to, weather, storage practices, contamination, use of unapproved fuels, coolants, lubricants, additives, fertilizers, water, or chemicals.
- Failure or performance issues due to the use of fuels (e.g. gasoline, diesel, or biodiesel) that do not conform to their respective industry standards.
- Normal noise, vibration, wear and tear, and deterioration. Normal "wear and tear" includes, but is not limited to, damage to seats due to wear or abrasion, worn painted surfaces, scratched decals or windows.

Countries Other than the United States or Canada

Customers who have purchased Toro products exported from the United States or Canada should contact their Toro Distributor (Dealer) to obtain guarantee policies for your country, province, or state. If for any reason you are dissatisfied with your Distributor's service or have difficulty obtaining guarantee information, contact your Authorized Toro Service Center.

Parts

Parts scheduled for replacement as required maintenance are warranted for the period of time up to the scheduled replacement time for that part. Parts replaced under this warranty are covered for the duration of the original product warranty and become the property of Toro. Toro will make the final decision whether to repair any existing part or assembly or replace it. Toro may use remanufactured parts for warranty repairs.

Deep Cycle and Lithium-Ion Battery Warranty

Deep cycle and Lithium-Ion batteries have a specified total number of kilowatt-hours they can deliver during their lifetime. Operating, recharging, and maintenance techniques can extend or reduce total battery life. As the batteries in this product are consumed, the amount of useful work between charging intervals will slowly decrease until the battery is completely worn out. Replacement of worn out batteries, due to normal consumption, is the responsibility of the product owner. Note: (Lithium-Ion battery only): Refer to the battery warranty for additional information.

Lifetime Crankshaft Warranty (ProStripe 02657 Model Only)

The Prostripe which is fitted with a genuine Toro Friction Disc and Crank-Safe Blade Brake Clutch (integrated Blade Brake Clutch (BBC) + Friction Disc assembly) as original equipment and used by the original purchaser in accordance with recommended operating and maintenance procedures, are covered by a Lifetime Warranty against engine crankshaft bending. Machines fitted with friction washers, Blade Brake Clutch (BBC) units and other such devices are not covered by the Lifetime Crankshaft Warranty.

Maintenance is at Owner's Expense

Engine tune-up, lubrication, cleaning and polishing, replacement of filters, coolant, and completing recommended maintenance are some of the normal services Toro products require that are at the owner's expense.

General Conditions

Repair by an Authorized Toro Distributor or Dealer is your sole remedy under this warranty.

The Toro Company is not liable for indirect, incidental or consequential damages in connection with the use of the Toro Products covered by this warranty, including any cost or expense of providing substitute equipment or service during reasonable periods of malfunction or non-use pending completion of repairs under this warranty. Except for the Emissions warranty referenced below, if applicable, there is no other express warranty. All implied warranties of merchantability and fitness for use are limited to the duration of this express warranty.

Some states do not allow exclusions of incidental or consequential damages, or limitations on how long an implied warranty lasts, so the above exclusions and limitations may not apply to you. This warranty gives you specific legal rights, and you may also have other rights which vary from state to state.

Note Regarding Emissions Warranty

The Emissions Control System on your Product may be covered by a separate warranty meeting requirements established by the U.S. Environmental Protection Agency (EPA) and/or the California Air Resources Board (CARB). The hour limitations set forth above do not apply to the Emissions Control System Warranty. Refer to the Engine Emission Control Warranty Statement supplied with your product or contained in the engine manufacturer's documentation.