



Count on it.

Parts Catalog

Interior Mirror Kit

**Workman® Utility Vehicle or OutCross® 9060
Series Traction Unit**

Model No. 130-5449



Ordering Replacement Parts

To order replacement parts, please supply the part number, the quantity, and the description of each part desired.

Understanding Reference Numbers

Each identified part in an illustration has a reference number. The reference number for a part also appears in the parts list, along with other information about the part.

This catalog uses two special reference number formats, one to indicate parts in a service assembly and another to indicate the quantity of a given part in an illustration.

Service Assembly Reference Numbers

Parts in service assemblies have reference numbers in the form a:b. The a represents the reference number of the entire service assembly and the b represents a sequential number unique to each part within the service assembly.

For example, a wheel assembly might be identified by reference number 6, the tire by 6:1, the valve by 6:2, and the wheel by 6:3. When you order the assembly identified by reference number 6, you receive all parts identified by reference numbers 6:1, 6:2, and 6:3. However, you may also order any part individually. Reference numbers of this type appear in illustration and in parts lists.

Reference Numbers Indicating Quantity

In an illustration, if a reference number indicates more than one part, the reference number has the form nX y. The n represents the quantity of the part, the X is the multiplication symbol, and the y represents the reference number.

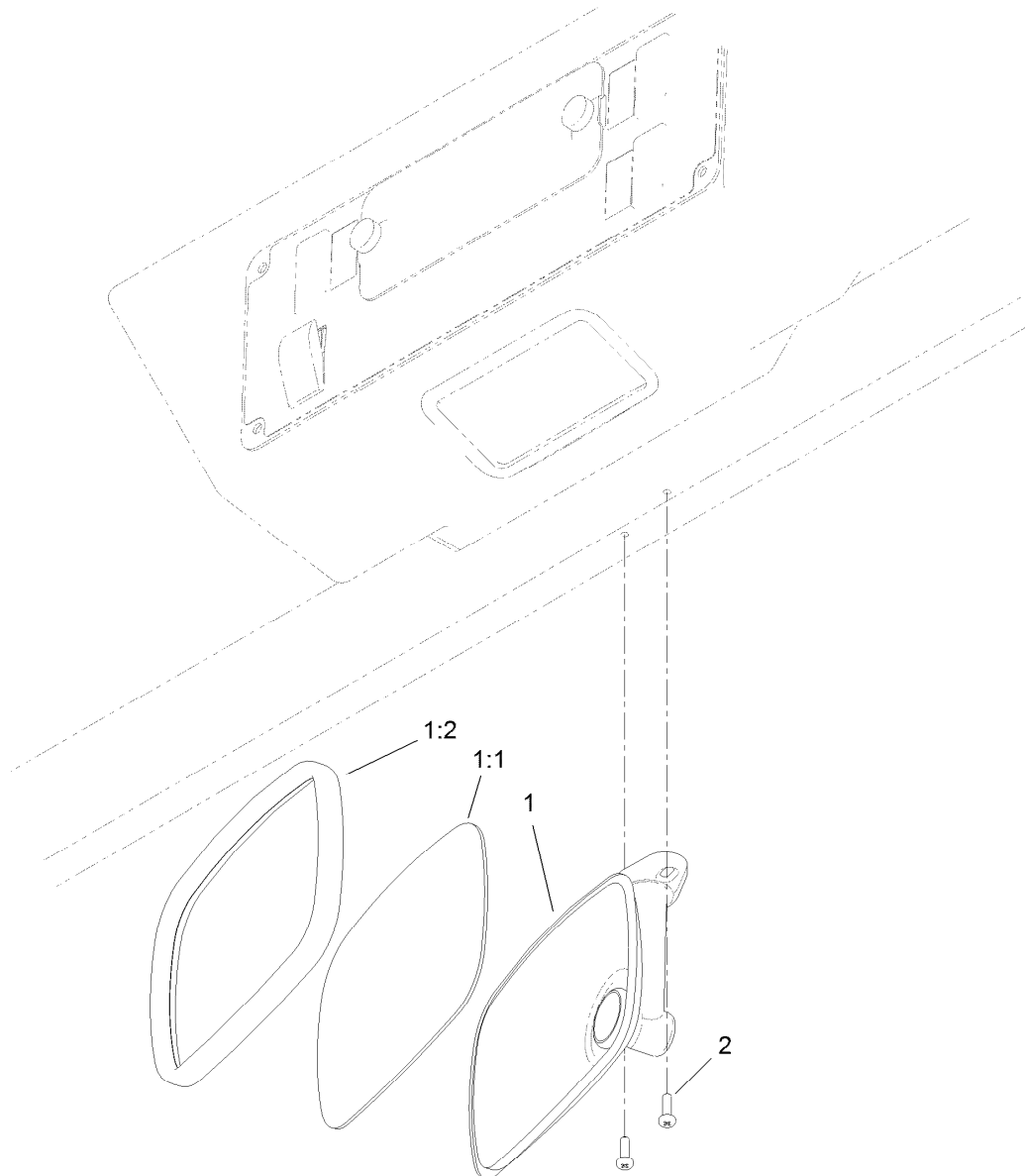
For example, in an illustration, the reference number 2X 37 means that two of the parts identified by reference number 37 are indicated.

Contents

MD, MDE, MDX and HDX Interior Mirror Assembly 4

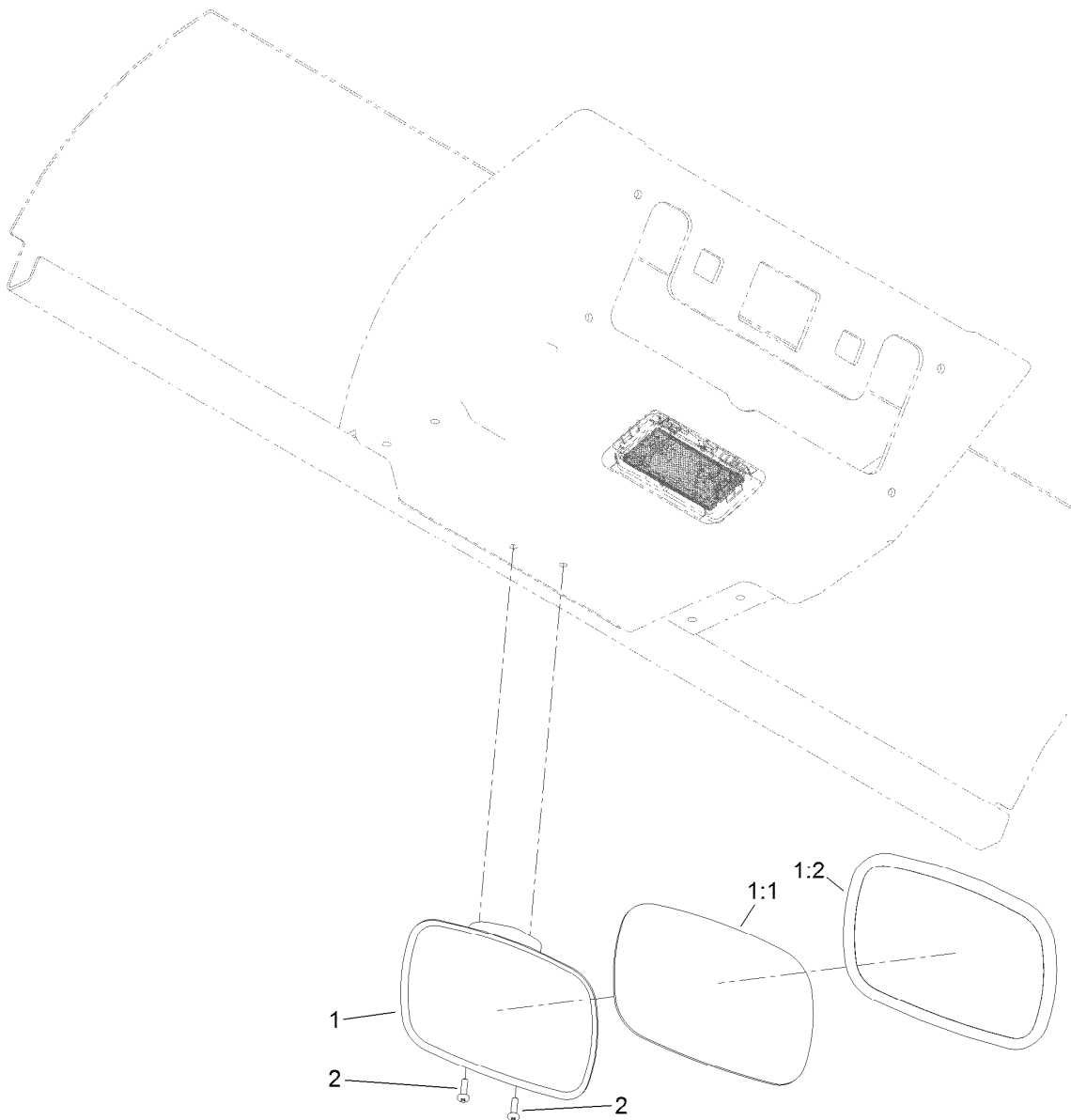
GTX Interior Mirror Assembly 5

OutCross Interior Mirror Assembly (Models 07511AA and 07511BA)..... 6



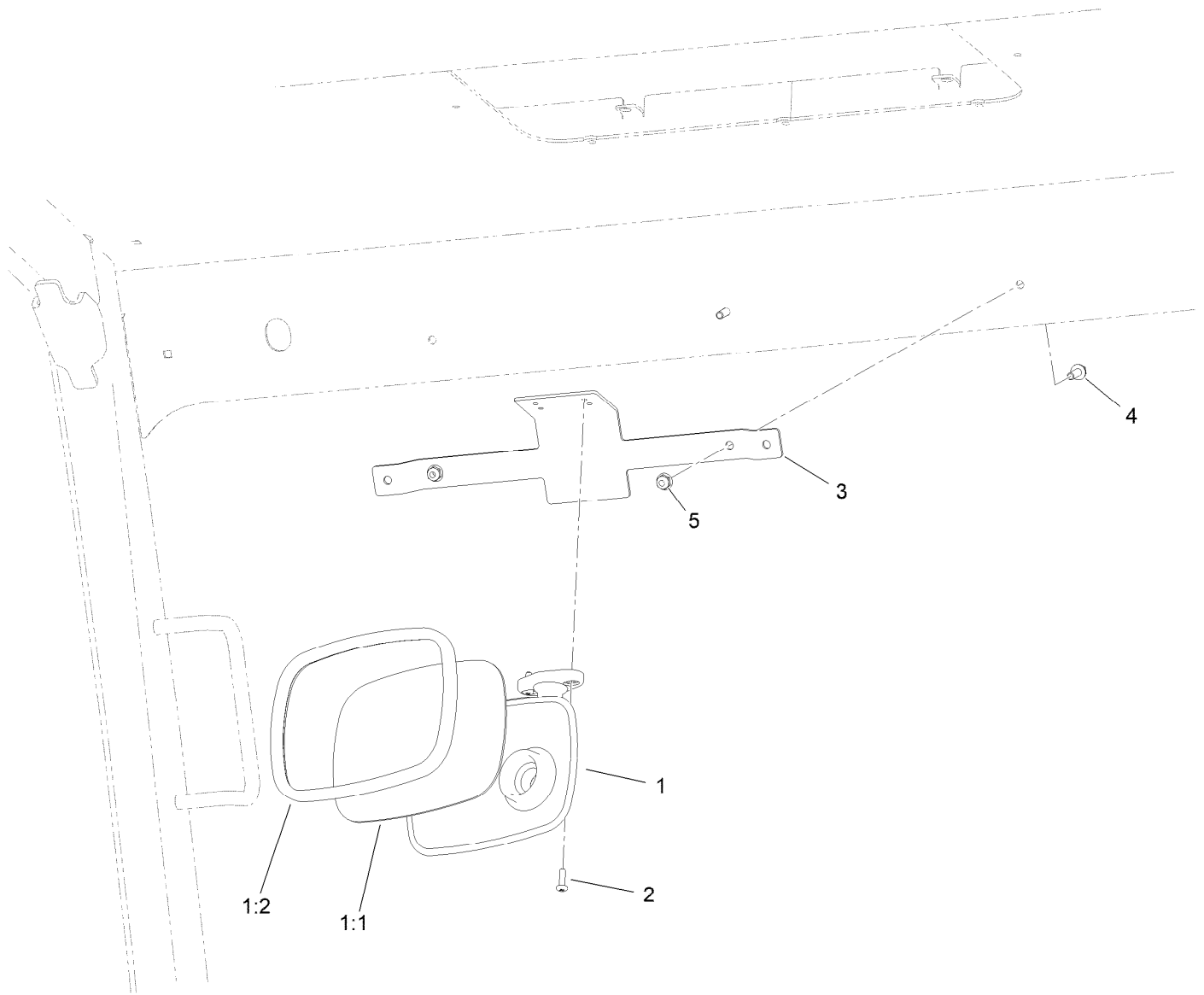
MD, MDE, MDX and HDX Interior Mirror Assembly

Ref.	Part Number	Qty.	Description
1	121-8343	1	Interior Mirror ASM
1:1	121-8342	1	Mirror
1:2	121-8389	1	Gasket
2	32144-32	2	Screw



GTX Interior Mirror Assembly

Ref.	Part Number	Qty.	Description
1	121-8343	1	Interior Mirror ASM
1:1	121-8342	1	Mirror
1:2	121-8389	1	Gasket
2	32144-32	2	Screw



OutCross Interior Mirror Assembly (Models 07511AA and 07511BA)

Ref.	Part Number	Qty.	Description
1	121-8343	1	Interior Mirror ASM
1:1	121-8342	1	Mirror
1:2	121-8389	1	Gasket
2	32144-32	2	Screw
3	145-7561-0P	1	Mount-Mirror
4	115-5103	2	Screw-HHF
5	104-7201	2	Nut-HF, NI

Notes:



Count on it.