



CE Decal Kit

Dingo[®] TX 420 and TX 425 Compact Utility Loader

Model No. 22362

Parts Catalog

Ordering Replacement Parts

To order replacement parts, please supply: the part number, the quantity, and the description of each part desired.

Understanding Reference Numbers

Each identified part in an illustration has a reference number. The reference number for a part also appears in the parts list, along with other information about the part.

This catalog uses two special reference number formats, one to indicate parts in a service assembly and another to indicate the quantity of a given part in an illustration.

Service Assembly Reference Numbers

Parts in service assemblies have reference numbers in the form **a:b**. The **a** represents the reference number of the entire service assembly and the **b** represents a sequential number unique to each part within the service assembly.

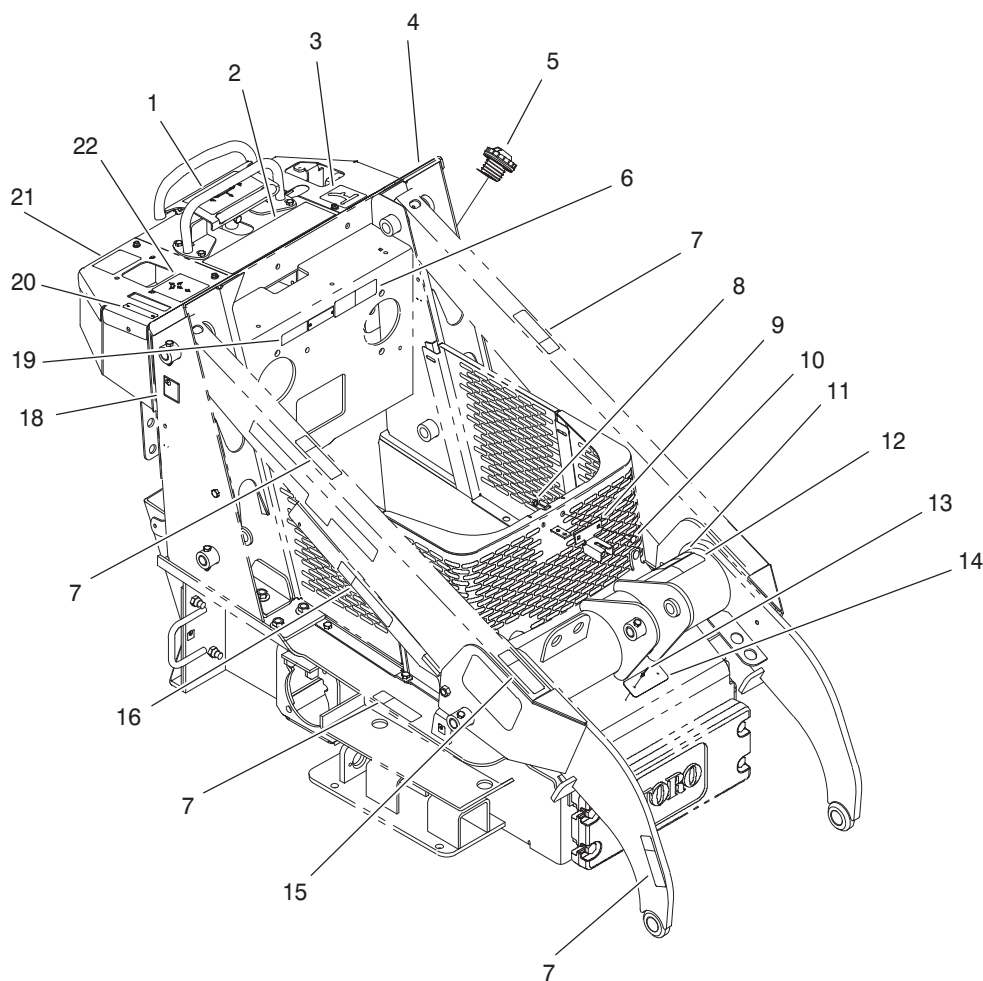
For example, a wheel assembly might be identified by reference number **6**, the tire by **6:1**, the valve by **6:2**, and the wheel by **6:3**. When you order the assembly identified by reference number **6**, you receive all parts identified by reference numbers **6:1**, **6:2**, and **6:3**. However, you may also order any part individually.

Reference numbers of this type appear in illustrations and in part lists.

Reference Numbers Indicating Quantity

In an illustration, if a reference number indicates more than one part, the reference number has the form **nX y**. The **n** represents the quantity of the part, the **X** is the multiplication symbol, and the **y** represents the reference number.

For example, in an illustration, the reference number **2X 37** means that two of the parts identified by reference number **37** are indicated.



Sheet No.: 2

Decal Assembly

Ref. No.	Part No.	Qty.	Description
1	104-9952	1	Decal-Traction
2	104-9957	1	Decal-Danger
3	104-9955	1	Decal-Auxiliary
4	104-9956	1	Decal-Panel
5	93-7170	1	Cap-Fuel
6	93-7814	1	Decal-Danger
7	100-8821	6	Decal-Pinch
8	3296-42	2	Nut-Lock, NI
9	104-2845-03	1	Cover-Latch
10	3229-28	2	Screw-CARR
11	100-8822	1	Decal-No Rider
12	104-9950	1	Decal-Caution
13	3269-31	2	Rivet-Pop
14	104-9983	1	Plate-Hot Surface
15	104-9951	1	Decal-Caution
16	104-9954	1	Decal-Danger
18	105-7895	1	Decal-Lwa 106
19	104-9981	1	Decal-Info 22306
19	104-9984	1	Decal-Info 22307
20	104-9958	1	Decal-Brake
21	104-9977	1	Decal-Interlock
22	104-9953	1	Decal-Loader

Ref. No.	Part No.	Qty.	Description