



Canopy Kit Workman® 1100/2100 and Twister™ Utility Vehicle

Model No. 07297

Model No. 07297R

Form No. 3326-769 Rev B

Installation Instructions

Safety and Instruction Decals



Safety decals and instructions are easily visible to the operator and are located near any area of potential danger. Replace any decal that is damaged or lost.



104-6731

Assembly

1. Position the machine on a level surface. Set the parking brake, turn the ignition off, and remove the key.



Caution



If you leave the key in the ignition switch, someone could accidentally start the engine and seriously injure you or other bystanders.

Remove the key from the ignition switch before you do any maintenance.

2. If your vehicle has a Roll Over Protection System (ROPS), proceed to step 3. If your vehicle does not have a ROPS, proceed as follows:
 - A. Loosely attach the support brackets to the rear support tube with 8 screws, 4 (5/16 x 2-3/4 in.) and 4 (5/16 x 1-3/4 in.); 16 flat washers (5/16 in.); and 8 flange nuts (5/16 in.) (Fig. 1).
 - B. Loosely attach the support brackets to the vehicle with 8 screws (5/16 x 1 in.), 16 flat washers (5/16 in.), and 8 flange nuts (5/16 in.) (Fig. 1).
3. Remove the rear bolt that holds the front fender to the dash and front frame support on each side of the vehicle. Do not remove the fenders from the vehicle (Fig. 1).

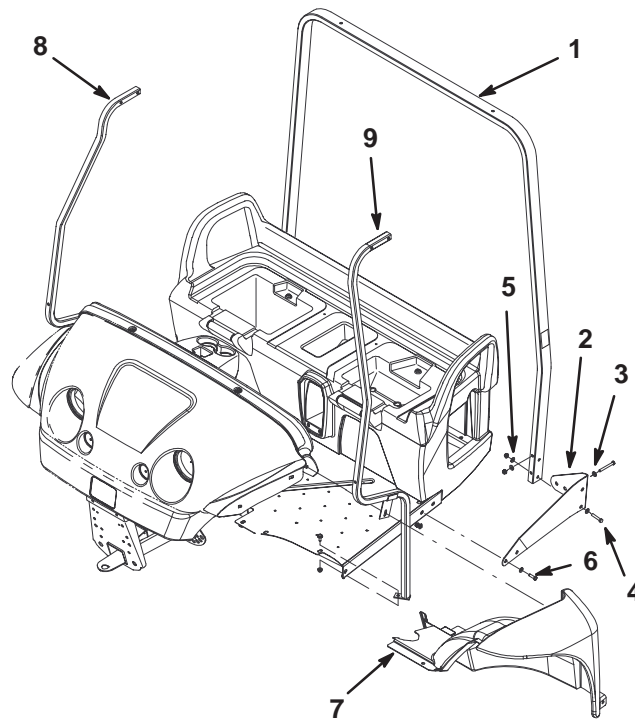


Figure 1

- | | |
|--|--|
| 1. Rear support tube | 6. Screw, 5/16 x 1 in., and washer, 5/16 in. |
| 2. Left-hand support bracket | 7. Left-hand front fender |
| 3. Screw, 5/16 x 2-3/4 in., and washer, 5/16 in. | 8. Right-hand front support |
| 4. Screw, 5/16 x 1-3/4 in., and washer, 5/16 in. | 9. Left-hand front support |
| 5. Flange nut and washer, 5/16 in. | |

4. Slide the slotted bracket on the front support between the fender and vehicle. Loosely attach the front supports to the floor of the vehicle using the existing hardware on the vehicle (Fig. 1).
5. Secure the fenders with the bolts removed in step 3.
6. Loosely attach the canopy to the front supports using 4 long screws (5/16 x 2-3/4 in.), 8 flat washers (5/16 in.), and 4 flange nuts (5/16 in.) (Fig. 2).

Note: The canopy support is already loosely attached to the canopy (Fig. 2).

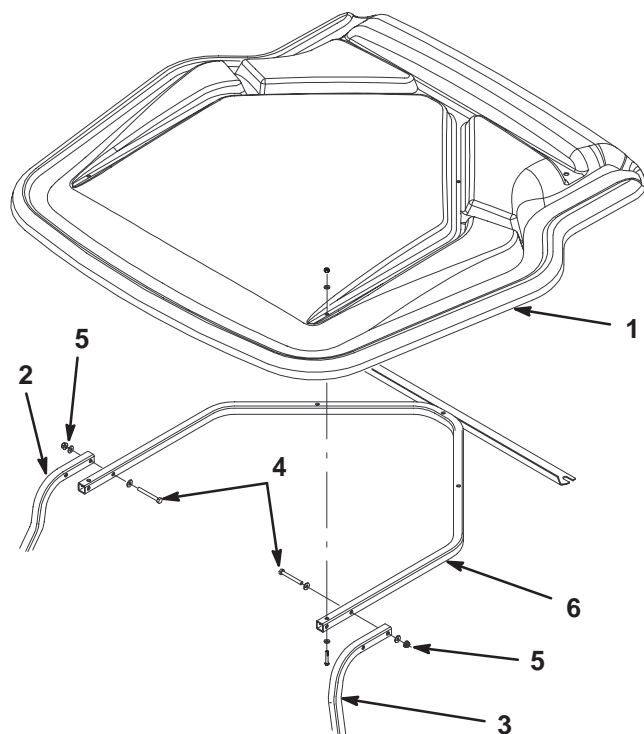


Figure 2

- | | |
|--|------------------------------------|
| 1. Canopy | 5. Flange nut and washer, 5/16 in. |
| 2. Right-hand front support | 6. Canopy support |
| 3. Left-hand front support | |
| 4. Screw, 5/16 x 2-3/4 in., and washer, 5/16 in. | |

7. If your vehicle has a ROPS, insert the clinch nuts into the holes in the ROPS (Fig. 3). Lift the canopy and attach it to the ROPS with 2 screws (3/8 x 1 in.) and 2 flat washers (3/8 in.) (Fig. 3). If your vehicle does not have a ROPS, lift the canopy assembly and attach it to the rear support tube with 2 screws (5/16 x 2 in.), 4 washers (5/16 in.), and 2 flange nuts (5/16 in.) (Fig. 4).

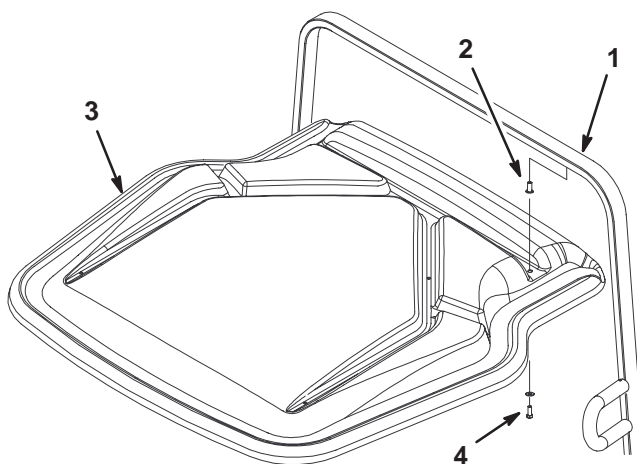


Figure 3

Vehicle with ROPS

- | | |
|---------------|---|
| 1. ROPS | 4. Screw, 3/8 x 1 in., and washer 3/8 in. |
| 2. Clinch nut | |
| 3. Canopy | |

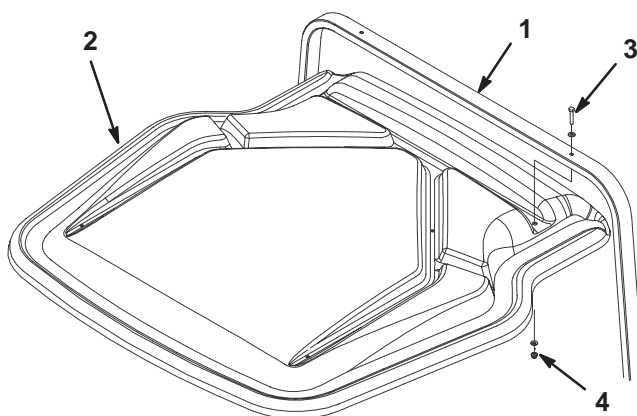


Figure 4

Vehicle without ROPS

- | | |
|--|------------------------------------|
| 1. Rear support tube | 4. Flange nut and washer, 5/16 in. |
| 2. Canopy | |
| 3. Screw, 5/16 x 2 in., and washer, 5/16 in. | |

8. Starting at the bottom of the vehicle and working your way to the top, tighten all of the fasteners.
9. Adjust the front suspension; refer to Adjusting the Front Suspension in the vehicle *Operator's Manual*.