



# 72in Flex™ Deck Side Discharge Mower

## Groundsmaster® 300 Series

Model No. 30799—220000001 and Up

## Parts Catalog

### Ordering Replacement Parts

To order replacement parts, please supply: the part number, the quantity, and the description of each part desired.

### Understanding Reference Numbers

Each identified part in an illustration has a reference number. The reference number for a part also appears in the parts list, along with other information about the part.

This catalog uses two special reference number formats, one to indicate parts in a service assembly and another to indicate the quantity of a given part in an illustration.

### Service Assembly Reference Numbers

Parts in service assemblies have reference numbers in the form **a:b**. The **a** represents the reference number of the entire service assembly and the **b** represents a sequential number unique to each part within the service assembly.

For example, a wheel assembly might be identified by reference number **6**, the tire by **6:1**, the valve by **6:2**, and the wheel by **6:3**. When you order the assembly identified by reference number **6**, you receive all parts identified by reference numbers **6:1**, **6:2**, and **6:3**. However, you may also order any part individually.

Reference numbers of this type appear in illustrations and in part lists.

### Reference Numbers Indicating Quantity

In an illustration, if a reference number indicates more than one part, the reference number has the form **nX y**. The **n** represents the quantity of the part, the **X** is the multiplication symbol, and the **y** represents the reference number.

For example, in an illustration, the reference number **2X 37** means that two of the parts identified by reference number **37** are indicated.

## Contents

Description	Page	Description	Page
Left Hand Deck Wing and Cover Assembly . . .	3	Center Deck Assembly No. 105-9580 . . . . .	9
Fork Caster and Wheel Assembly . . . . .	4	Drive Shaft Assembly No. 100-1557 . . . . .	10
Left Hand Deck Wing Assembly No. 105-9578	5	Right Hand Wing and Cover Assembly . . . . .	11
Center Deck, Arms and Covers Assembly . . . .	6	Right Hand Deck Wing Assembly No. 105-9575	13
Gear Box Assembly No. 104-3441 . . . . .	8		

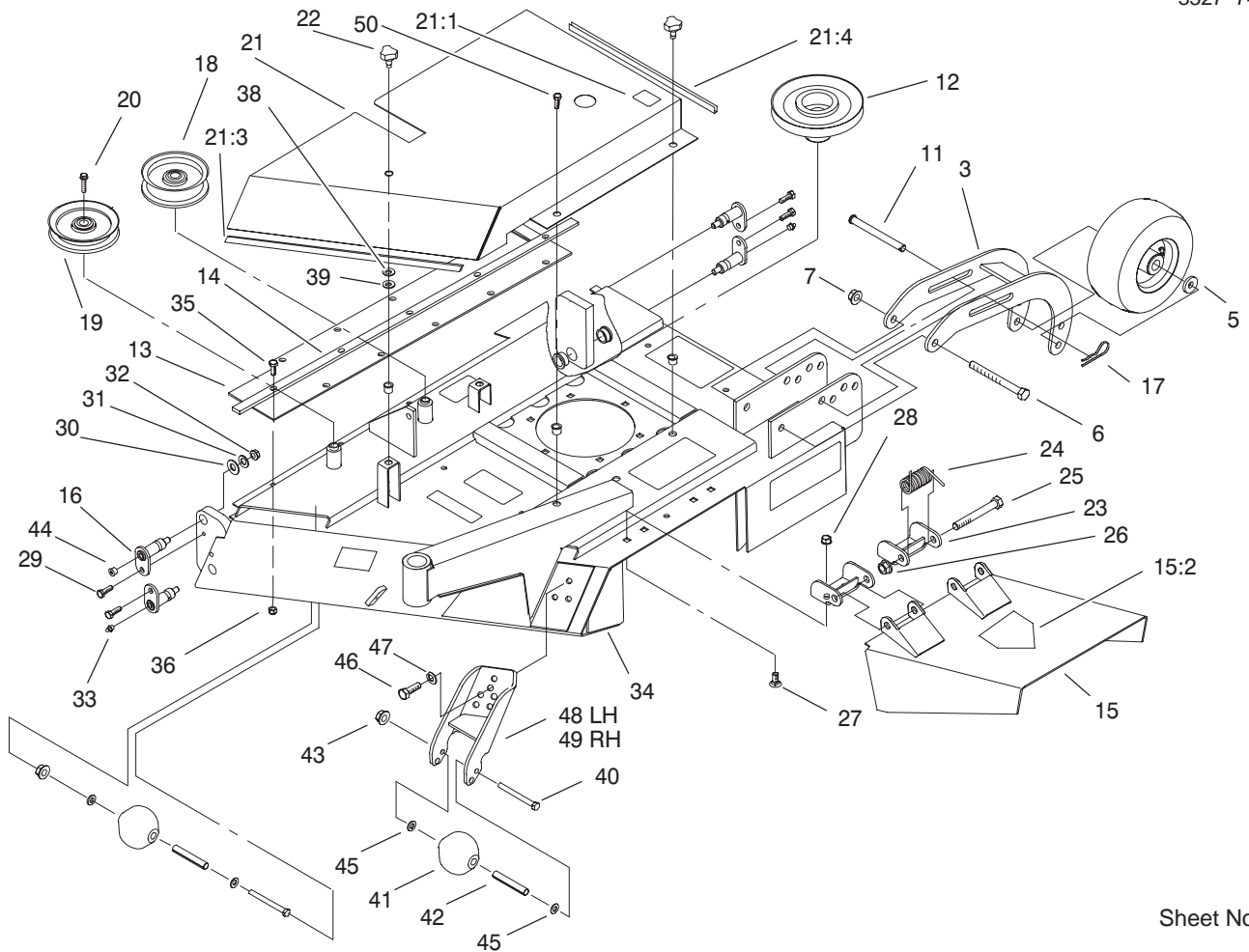
## Accessories

Description	Model / Part No.	Description	Model / Part No.
Hight Lift Blade . . . . .	23-2410	Tire-Foam Filled 8" . . . . .	93-5974
Height Of Cut Spacers 1/4" . . . . .	54-8810	Recycler Kit . . . . .	30838
Atomic Blade . . . . .	106-4354		

## Part Description Abbreviations

Part descriptions in this catalog may include the following abbreviations.

Abbreviation	Meaning	Abbreviation	Meaning
AR . . . . .	as required	HYD . . . . .	hydraulic
ASM . . . . .	assembly	INC . . . . .	incorporated
CARR . . . . .	carriage	LH . . . . .	left hand
DEG . . . . .	degrees	NI . . . . .	nylon insert
FH . . . . .	flat head	PPH . . . . .	Phillips pan head
GA . . . . .	gauge	PTH . . . . .	Phillips truss head
HF . . . . .	hex flange	PTO . . . . .	power take off
HH . . . . .	hex head	RH . . . . .	right hand
HHF . . . . .	hex head flange	SFH . . . . .	slotted fillister head
HLH . . . . .	hex lag head	SHH . . . . .	slotted hex head
HJ . . . . .	hex jam	SQH . . . . .	square head
HOC . . . . .	height-of-cut	SHWH . . . . .	slotted hex washer head
HS . . . . .	hex socket	SPH . . . . .	slotted pan head
HSBH . . . . .	hex socket button head	SRH . . . . .	slotted round head
HSFH . . . . .	hex socket flat head	STD . . . . .	standard
HSH . . . . .	hex socket head	TAP . . . . .	self tapping
HWH . . . . .	hex washer head	TTH . . . . .	Torx truss head
HWHTF . . . . .	hex washer head thread forming	WH . . . . .	wing head



Sheet No.: 2

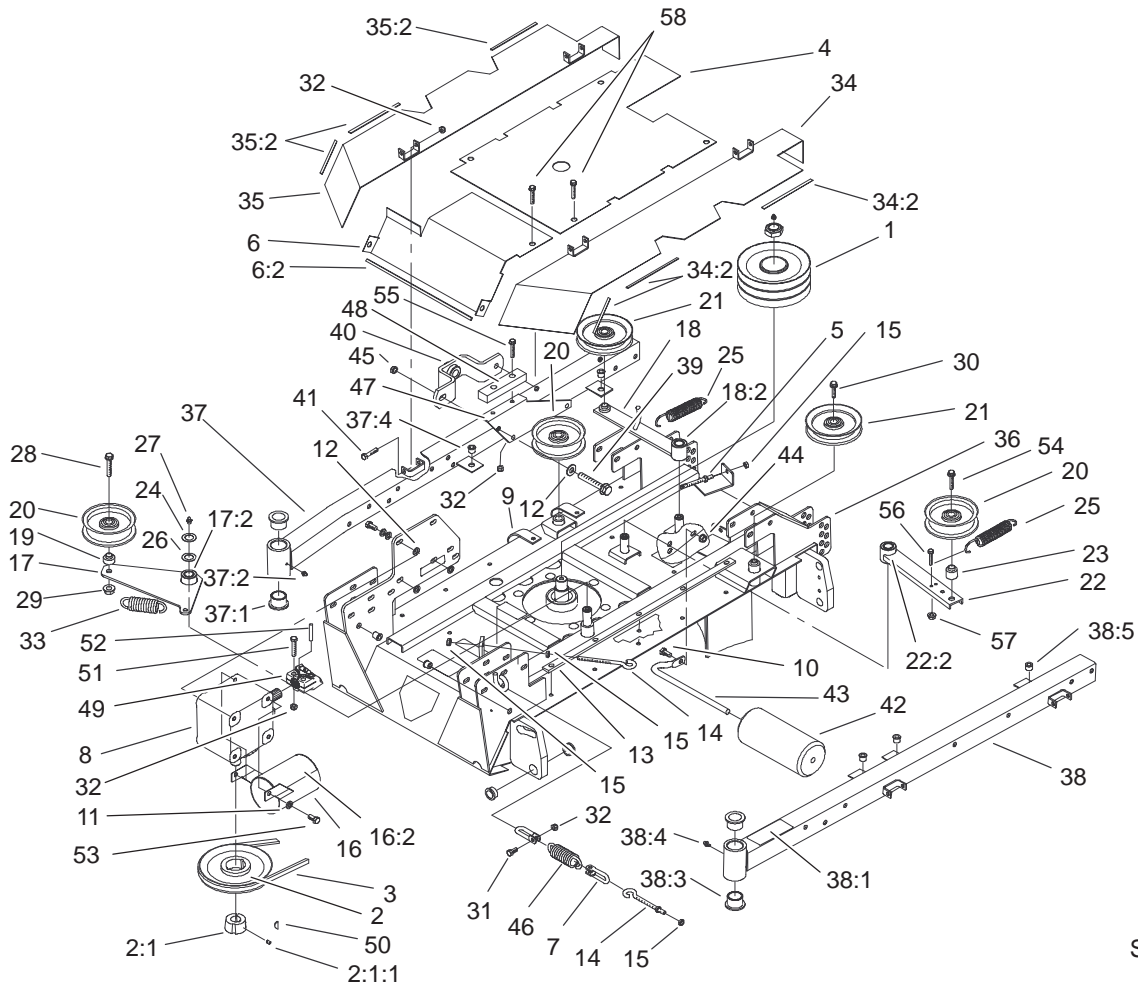
## Left Hand Deck Wing and Cover Assembly

Ref. No.	Part No.	Qty.	Description
3	99-9806-01	2	Pivot Arm ASM
5	70-8040	4	Washer
6	325-19	8	Screw-HH
7	32128-23	8	Nut-HF
11	100-5024	2	Pin-Clevis
12	99-9794	1	Spindle Pulley ASM
13	104-2503	1	Flap-Rubber
14	104-2504-01	1	Strap
15	104-9483	1	Deflector ASM
15:2	100-6582	1	Decal-Danger, Int'l
15:2	54-9220	1	Decal-Danger
16	99-9756	8	Pin Pivot ASM
17	3290-343	2	Pin-Hair
18	69-5430-03	1	Pulley-Idler, Flat
19	63-1540-03	1	Pulley-Idler
20	3234-32	2	Screw-HHF
21	105-9573	1	LH Top Cover ASM
21:1	93-3709	1	Decal-No Step
21:3	27-6620	1	Trim-Hood
21:4	37-9650	1	Trim-Box, Tool
22	77-3620	11	Knob-Retainer
23	51-1530	2	Bracket-Hinge
24	51-1550	2	Spring
25	325-17	2	Screw-HH
26	32128-23	2	Nut-HF
27	3231-27	4	Screw-CARR

Ref. No.	Part No.	Qty.	Description
28	3290-357	4	Nut-HHF
29	32144-70	8	Screw-HH
30	256-305	4	Washer-Thrust
31	3256-4	8	Washer-Flat
32	3296-39	8	Nut-Lock, NI
33	302-2	4	Fitting-Grease
34	105-9578	1	LH Wing Deck ASM
35	322-4	11	Screw-HH
36	3296-29	11	Nut-Lock, NI
38	3256-24	13	Washer-Flat
39	32151-72	13	Ring-Retaining
40	323-23	6	Screw-HH
41	29-4820	6	Roller
42	94-2500	6	Tube-Spacer, Wheel
43	3296-39	6	Nut-Lock, NI
44	285-17	4	Plug-Pipe
45	3256-38	12	Washer-Flat
46	323-6	6	Screw-HH
47	3253-21	6	Washer-Lock
48	105-2570-01	1	Bracket-Roller, LH
49	105-2573-01	1	Bracket-Roller, RH
50	3234-1	1	Screw-HHF







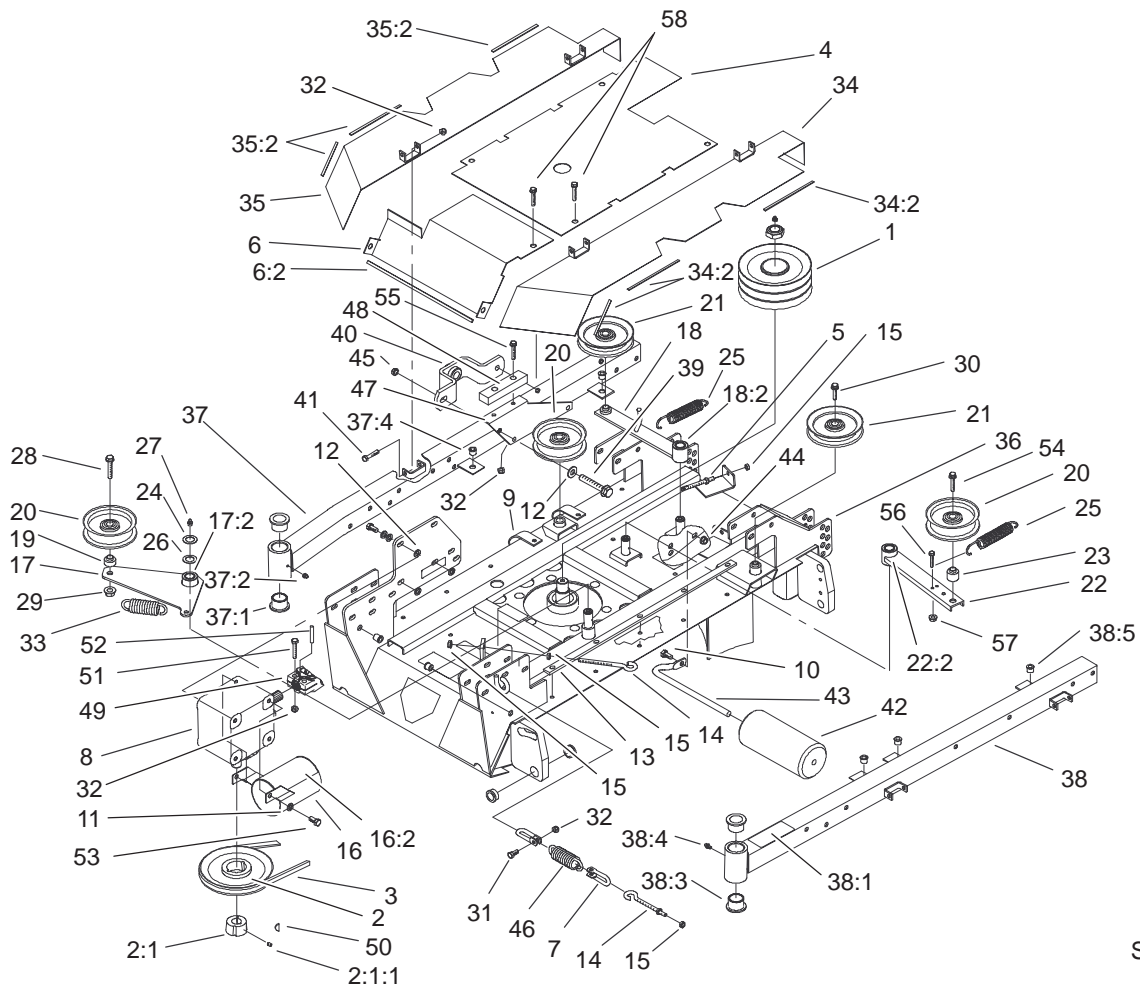
Sheet No.: 3

## Center Deck, Arms and Covers Assembly

Ref. No.	Part No.	Qty.	Description
1	99-9789	1	Spindle Pulley ASM
2	104-4600-03	1	Spindle Pulley ASM
2:1	23-1640	1	Bushing-Taperlock
2:1:1	3247-4	2	Screw-Set
3	99-9770	1	Belt-V
4	99-9831-03	1	Cover-Center, Top
5	100-6199	2	Rod-Tensioner
6	104-1275	1	Top Center Cover ASM
6:2	38-4080	1	Trim-Hood
7	104-1270	2	Shackle
8	104-3441	1	Gearbox
9	2412-113	2	Clamp
10	323-4	1	Screw-HH
11	3253-21	5	Washer-Lock
12	3256-24	23	Washer-Flat
13	100-8007-01	1	Strap
14	100-6177	2	Rod-Tension
15	3217-6	9	Nut-Hex
16	99-8408	1	PTO Guard ASM
16:2	93-7283	1	Decal-Danger
17	104-4601	1	Idler Tensioner ASM
17:2	256-188	1	Bushing
18	104-4602	1	Idler Arm ASM
18:2	256-188	1	Bushing
19	69-6970	1	Spacer-Idler, Flat

Ref. No.	Part No.	Qty.	Description
20	69-5430-03	3	Pulley-Idler, Flat
21	63-1540-03	2	Pulley-Idler
22	69-6610-01	1	Arm-Idler
22:2	256-188	1	Bushing
23	99-9830	1	Spacer
24	32120-72	3	Ring-Snap
25	76-1670-03	2	Spring-Extension
26	3-6498	3	Washer-Thrust
27	302-2	3	Fitting-Grease
28	3234-27	2	Screw-Flange
29	32128-23	3	Nut-HF
30	3234-32	2	Screw-HHF
31	322-4	2	Screw-HH
32	3296-29	8	Nut-Lock, NI
33	85-6390	1	Spring-Extension
34	105-9567	1	LH Flap Cover ASM
34:2	95-5686	3	Trim
35	105-9564	1	RH Flap Cover ASM
35:2	95-5686	3	Trim
36	105-9580	1	Center Deck ASM
37	104-1264	1	RH Arm ASM
37:1	94-1291	2	Bushing-Special
37:2	302-5	1	Fitting-Grease
37:4	32148-9	2	Insert-Nut
*37:5	100-8038	1	Decal-Hanger, HOC
38	104-1278	1	LH Arm ASM

\* Not illustrated

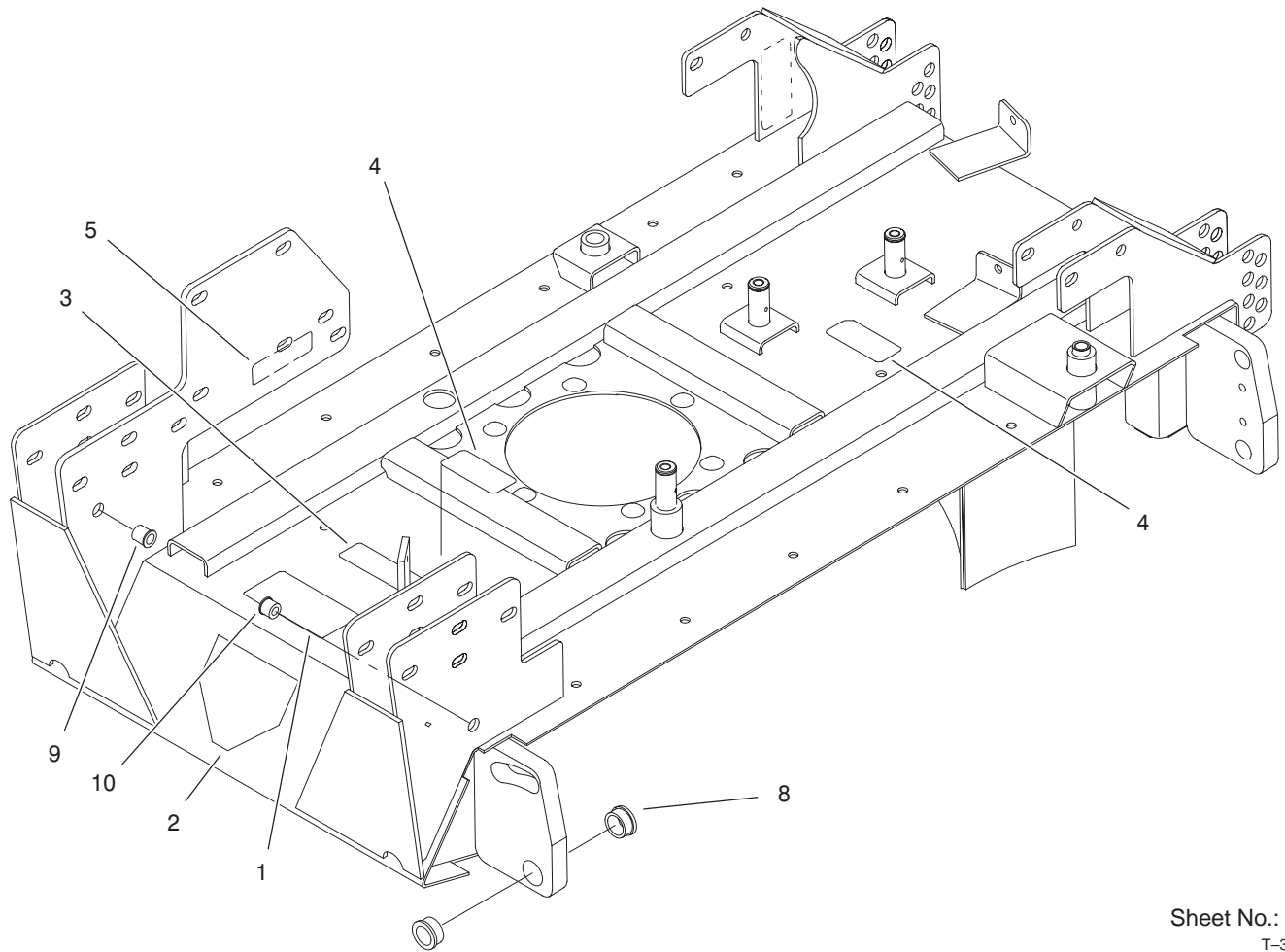


Sheet No.: 3

### Center Deck, Arms and Covers Assembly(Continued)

Ref. No.	Part No.	Qty.	Description	Ref. No.	Part No.	Qty.	Description
38:1	92-3035	1	Decal-HOC				
38:3	94-1291	2	Bushing-Special				
38:4	302-5	1	Fitting-Grease				
38:5	32148-9	3	Insert-Nut				
	39	323-14	18	Screw-HH			
	40	99-9801-01	2	Ball Joint Mount ASM			
	41	322-13	4	Screw-HH			
	42	68-6710	1	Roller			
	43	68-6840	1	Shaft-Roller			
	44	3296-39	1	Nut-Lock, NI			
	45	32128-19	16	Nut-HF			
	46	88-6460	1	Spring-Extension			
	47	105-9583-01	1	Plate-Stop			
	48	98-5760	1	Stop-Rubber			
	49	100-1557	1	Driveshaft ASM			
	50	3257-5	1	Key-Woodruff			
	51	322-9	2	Screw-HH			
	52	32121-34	1	Pin-Roll			
	53	323-6	3	Screw-HH			
	54	3234-22	1	Screw-HHF			
	55	3274-22	2	Screw-HSH			
	56	63-3410	1	Screw-Shoulder			
	57	3296-42	1	Nut-Lock, NI			
	58	3234-1	2	Screw-HHF			



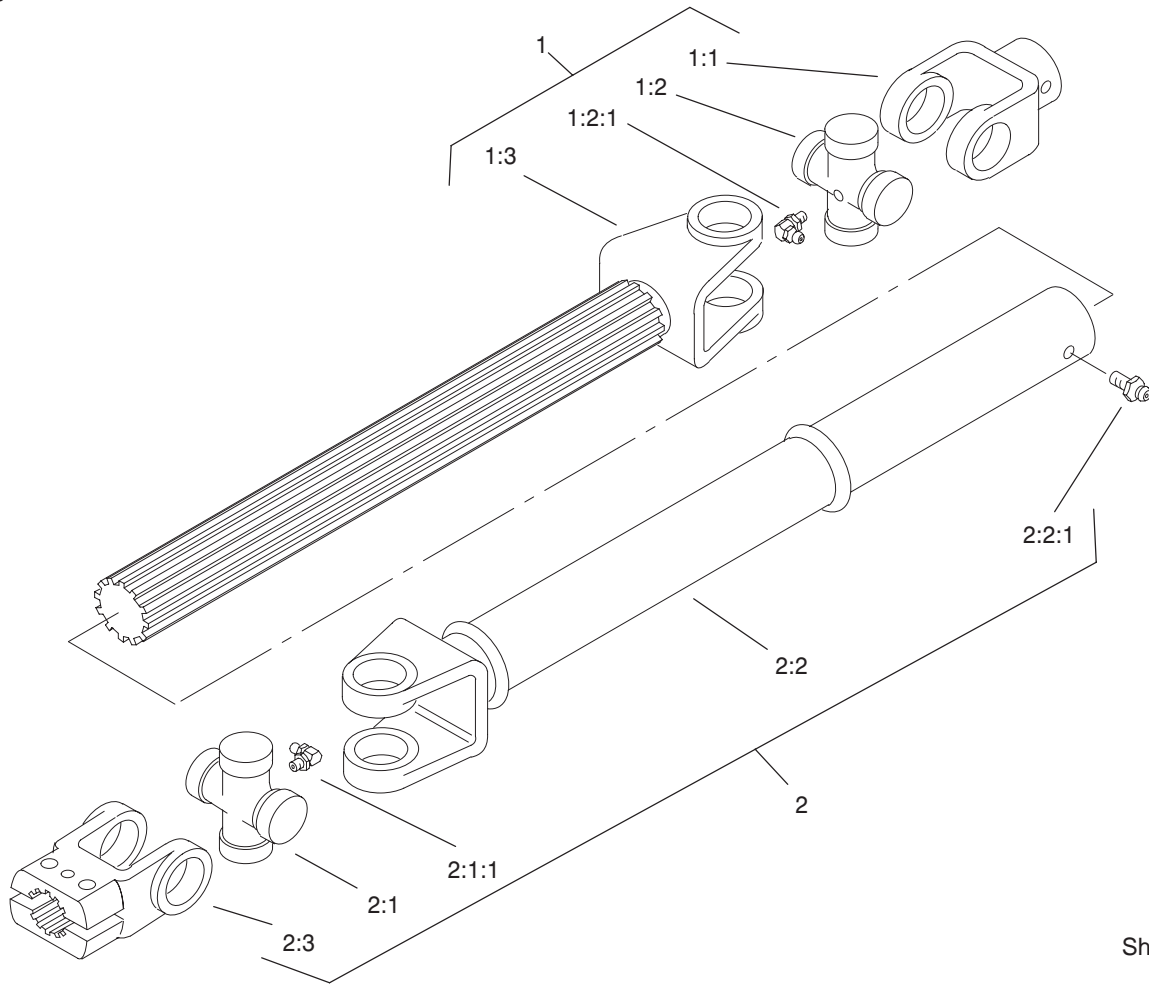


Sheet No.: A3  
T-3521

## Center Deck Assembly No. 105-9580

Ref. No.	Part No.	Qty.	Description
1	100-8046	1	Decal-Routing, Belt
2	100-6582	1	Decal-Danger, Int'l
3	100-6578	1	Decal-Danger
4	93-6696	2	Decal-Spring, Loaded
5	93-6697	1	Decal-Lube
8	99-9769	4	Bushing-Special
9	32148-10	1	Insert-Threaded
10	32148-9	1	Insert-Nut

Ref. No.	Part No.	Qty.	Description

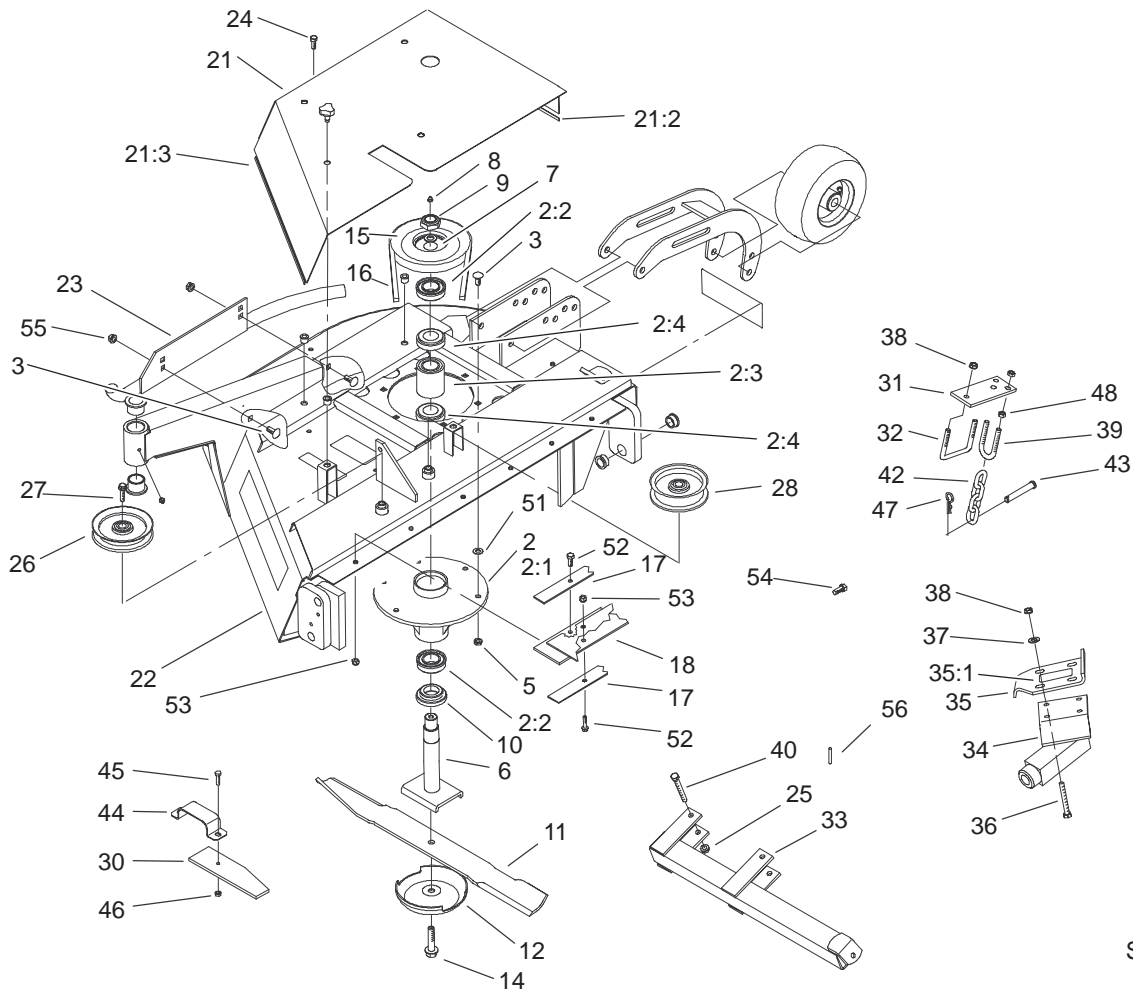


Sheet No.: A4  
T-3522

## Drive Shaft Assembly No. 100-1557

Ref. No.	Part No.	Qty.	Description
1	104-1293	1	Slip Yoke Shaft ASM
1:1	62-3800	1	Yoke-End
1:2	54-9180	1	U-Joint Kit
1:2:1	62-3820	1	Fitting-Grease
1:3	104-1295	1	Shaft-Yoke, Slip
2	104-1294	1	Slip Yoke Tube ASM
2:1	54-9180	1	U-Joint Kit
2:1:1	62-3820	1	Fitting-Grease
2:2	104-1296	1	Tube-Yoke, Slip
2:2:1	302-58	1	Fitting-Grease
2:3	54-9040	1	Yoke-End

Ref. No.	Part No.	Qty.	Description



Sheet No.: 4

## Right Hand Wing and Cover Assembly

Ref. No.	Part No.	Qty.	Description
2	104-4603	3	Spindle ASM
2:1	69-1530	1	Housing-Spindle
2:2	253-154	2	Seal-Oil
2:3	69-8380	1	Spacer-Bearing
2:4	26-1830	1	Bearing ASM
3	3231-22	20	Screw-CARR
5	32128-21	18	Nut-HF
6	99-9826-03	3	Spindle Shaft ASM
7	3-8514	3	Washer-Thrust
8	302-2	3	Fitting-Grease
9	3296-49	3	Nut-Lock NI
10	92-9800	3	Spacer-Shaft, Spindle
11	29-5530-03	3	Blade
12	99-9827	3	Cup-Scalp, Anti
14	26-1820	3	Capscrew
15	99-9795	1	Spindle Pulley ASM
16	99-9771	2	Belt-V
17	105-9558-01	1	Strap
18	105-9557	1	Flap-Rubber
21	105-9571	1	RH Top Cover ASM
21:2	37-9650	1	Trim-Box, Tool
21:3	27-6620	1	Trim-Hood
22	105-9575	1	RH Wing Deck ASM
23	93-4519-01	1	Skid-RH
24	3234-1	1	Screw-HHF
25	3296-39	2	Nut-Lock, NI

Ref. No.	Part No.	Qty.	Description
26	63-1540-03	1	Pulley-Idler
27	3234-32	2	Screw-HHF
28	69-5430-03	1	Pulley-Idler, Flat
30	104-1269-03	2	Bracket-Hose
31	99-9804-01	1	Bracket-Lift, RH
32	99-9803	1	U-Bolt
33	100-4169-01	1	Lift Arm ASM
34	99-9800-01	1	Push Arm ASM
35	105-9597	1	Push Arm Bracket ASM
35:1	93-6696	1	Decal-Spring, Loaded
36	323-13	4	Screw-HH
37	3256-4	4	Washer-Flat
38	32128-19	6	Nut-HF
39	96-1259	1	U-Bolt
40	323-14	2	Screw-HH
42	95-6231	1	Chain-HOC
43	283-55	1	Pin-Clevis
44	93-9928	1	Clamp-Hose
45	321-6	2	Screw-HH
46	3296-42	2	Nut-Lock, NI
47	3290-355	1	Pin-Hair
48	3219-3	4	Nut-HH
51	3256-24	1	Washer-Flat
52	322-4	12	Screw-HH
53	3296-29	12	Nut-Lock, NI









