



CE Kit
Multi Pro® 1750 Turf Sprayer
 Model No. 41202

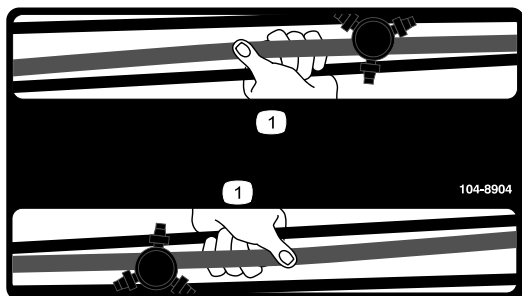
Installation Instructions

Safety

Safety and Instructional Decals



Safety decals and instructions are easily visible to the operator and are located near any area of potential danger. Replace any decal that is damaged or missing.



decal104-8904

104-8904

1. Grasp the boom here.



decal119-9434

119-9434

1. Tank contents



Installation

Loose Parts

Use the chart below to verify that all parts have been shipped.

| Procedure | Description | Qty. | Use |
|-----------|---------------------------------------|------|----------------------------------|
| 1 | Rear light | 1 | Install the rear light. |
| | Bracket | 1 | |
| | Nut (5/16 inch) | 2 | |
| | Bolt (5/16-18 x 3/4 inch) | 2 | |
| | Stamped-steel nut | 2 | |
| 2 | Horn assembly | 1 | Install the horn. |
| | Hex-head screw (5/16-18 x 3/4 inch) | 1 | |
| | Flange nut (5/16-18) | 1 | |
| 3 | Wire harness | 1 | Route the wiring harness. |
| 4 | Horn switch, jam nut, and knurled nut | 1 | Install the horn button. |
| | Switch button | 1 | |
| 5 | Lock-mount bracket | 1 | Install the seat lock. |
| | Latch | 1 | |
| | Grip | 1 | |
| | Hex-head screw (12 x 20 mm) | 1 | |
| | Locknut (12 mm) | 1 | |
| 6 | PPE storage bag | 2 | Install the PPE storage bags. |
| | Hoop rod | 2 | |
| | Mount bracket | 2 | |
| | U-bolt | 2 | |
| | Flange locknut (3/8 inch) | 4 | |
| 7 | Boom lift-point decal | 2 | Apply the decals on the machine. |
| | Tank-contents decal | 1 | |
| | Regulatory decal | 1 | |

1

Installing the Rear Light

Parts needed for this procedure:

| | |
|---|---------------------------|
| 1 | Rear light |
| 1 | Bracket |
| 2 | Nut (5/16 inch) |
| 2 | Bolt (5/16-18 x 3/4 inch) |
| 2 | Stamped-steel nut |

Procedure

1. Align the holes of the rear-light bracket with the 2 holes in the boom-frame channel.
2. Secure the bracket to the frame with the 2 bolts (5/16 x 3/4 inch) and 2 locknuts (5/16 inch) as shown in [Figure 1](#).

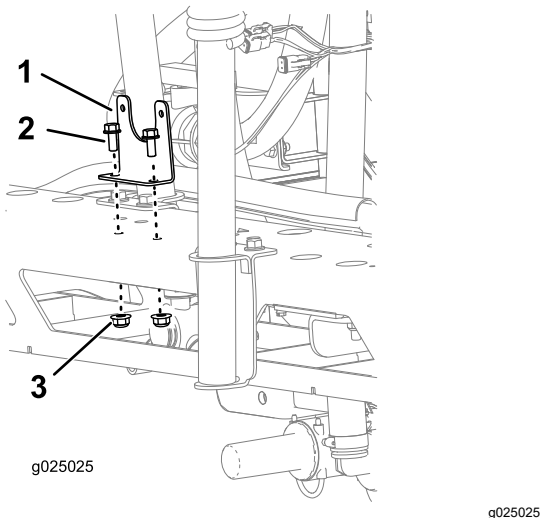


Figure 1

1. Bracket
2. Flanged-head bolt (5/16 x 3/4 inch)
3. Locknut (5/16 inch)

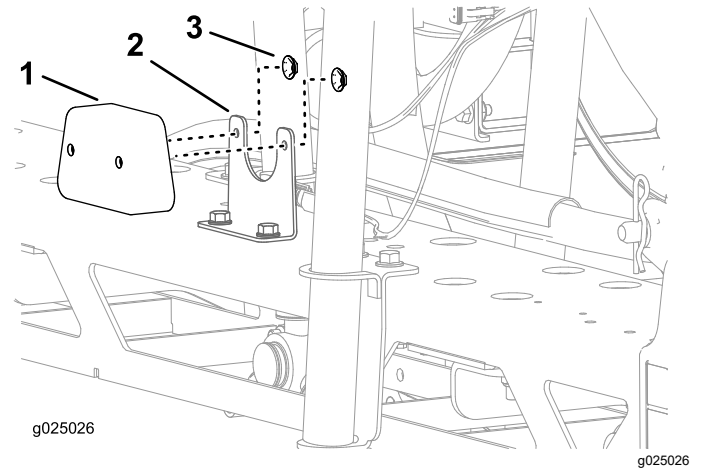


Figure 2

1. Rear-light
2. Rear-light bracket
3. Stamped-steel nut

2

Installing the Horn

Parts needed for this procedure:

| | |
|---|-------------------------------------|
| 1 | Horn assembly |
| 1 | Hex-head screw (5/16-18 x 3/4 inch) |
| 1 | Flange nut (5/16-18) |

Procedure

1. Align the horn assembly with the hole found on the front, right side of the machine ([Figure 3](#)).
2. Insert the hex-head screw (5/16-18 x 3/4 inch) through the hole of the horn assembly and the frame of the machine ([Figure 3](#)).
3. Install the horn assembly to the machine with the hex-head screw (5/16-18 x 3/4 inch) and the flange nut (5/16-18) as shown in [Figure 3](#).

3. Align the rear-light assembly to the rear-light bracket and secure the assembly with the 2 stamped-steel nuts as shown in [Figure 2](#).

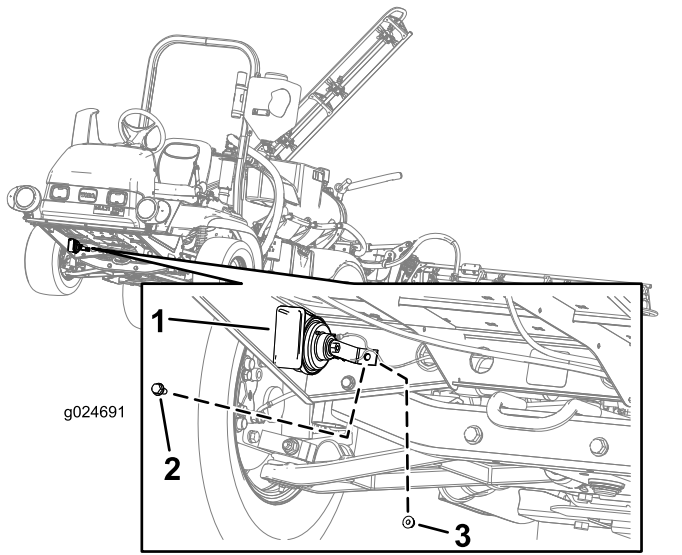


Figure 3

1. Horn assembly
2. Hex-head screw (5/16-18 x 3/4 inch)
3. Flange nut (5/16-18)

3

Routing the Wiring Harness

Parts needed for this procedure:

| | |
|---|--------------|
| 1 | Wire harness |
|---|--------------|

Figure 4 shows an outline of the kit wire-harness routing on the machine.

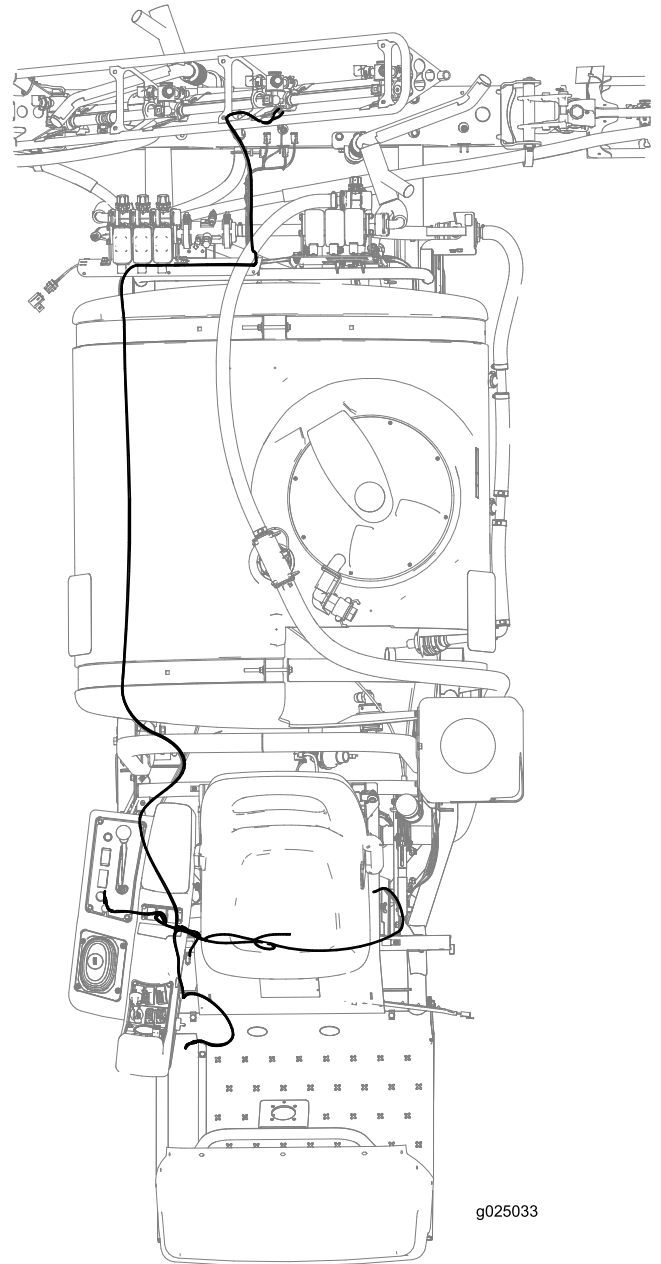


Figure 4

Routing the Wiring Harness to the Side Console

1. Route the wire harness through the front of the seat shroud (Figure 5).

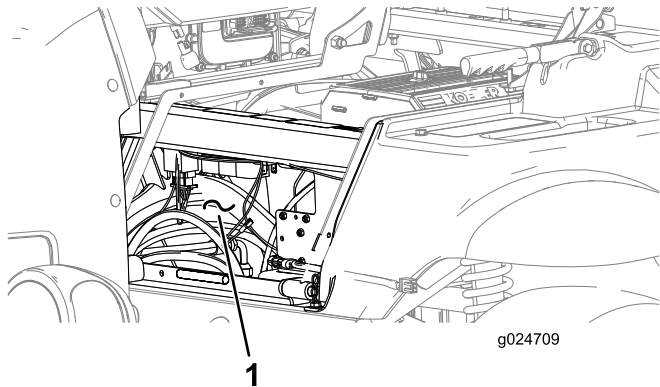


Figure 5

1. Opening in the front of the seat shroud

2. Route the wire harness to the side console (Figure 6).

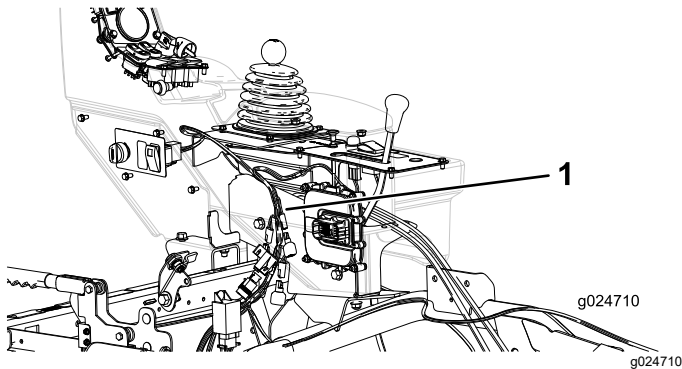


Figure 6

1. Harness

Routing the Wire Harness to the Horn

1. Remove the 2 bolts that secure the hose cover to the machine, and remove the cover (Figure 7 and Figure 8).

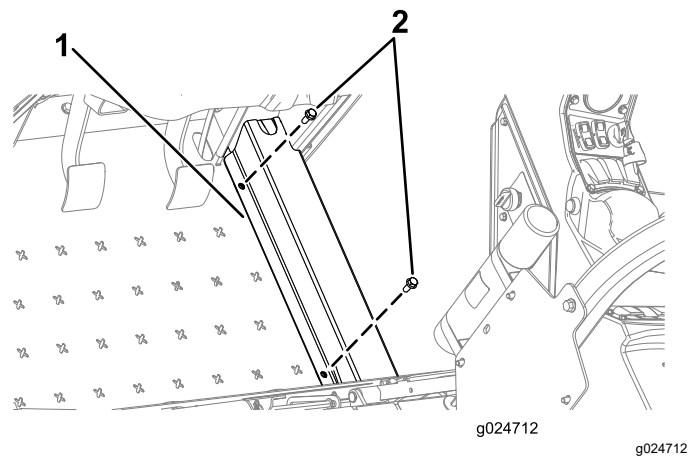


Figure 7

1. Cover
2. Bolts

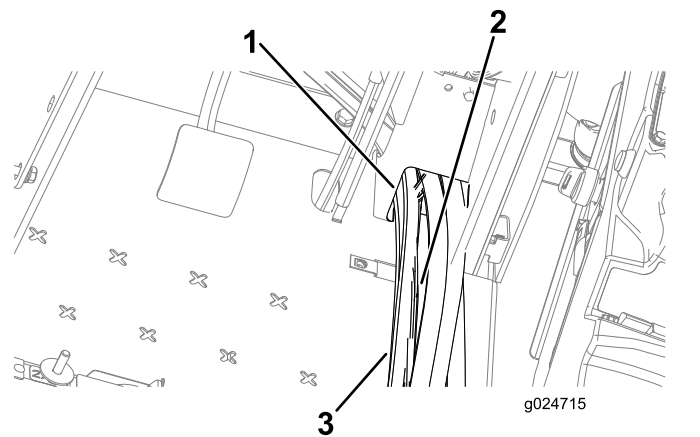


Figure 8

1. Floor-pan opening
2. Wire harness
3. Hoses

2. Route the wire harness forward and along the hoses to the horn.
3. Route the wire harness through the grommet at the hole in the rear-angle platform to the horn (Figure 9).

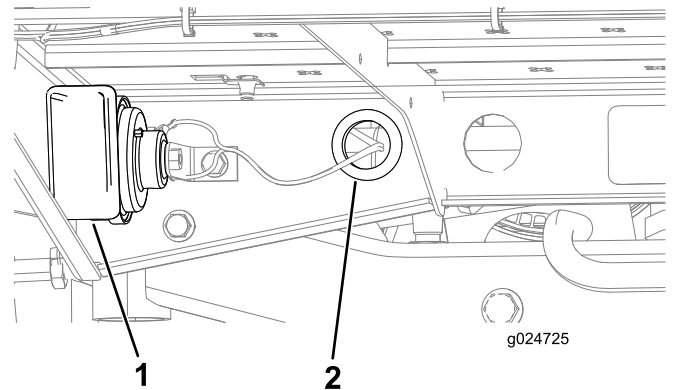


Figure 9

1. Horn
2. Grommet at the hole

- Connect the wiring-harness leg with the 2 terminals to the 2 terminals on the horn (Figure 10).

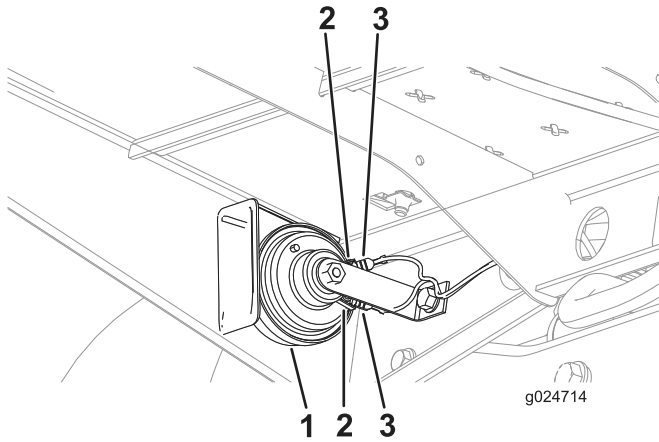


Figure 10

- Horn
- Terminal of the horn
- Terminal of the wiring-harness leg

- Install the cover removed in step 1, and secure it with the 2 bolts.

Routing the Wiring Harness to the Taillight

- Route the wiring harness along the right-frame channel adjacent to the tank (Figure 11).

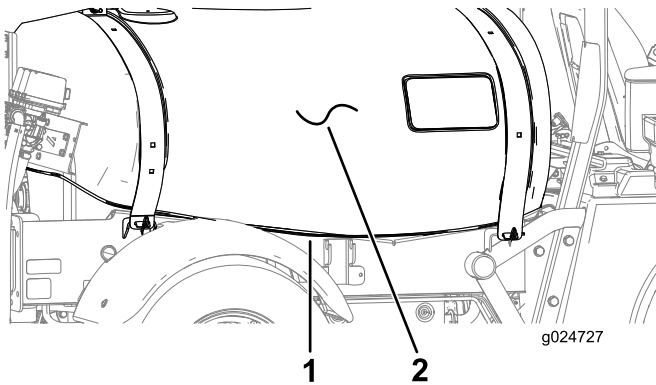


Figure 11

- Wiring harness
- Tank

- Route the wiring harness along the boom-frame channel (Figure 12).

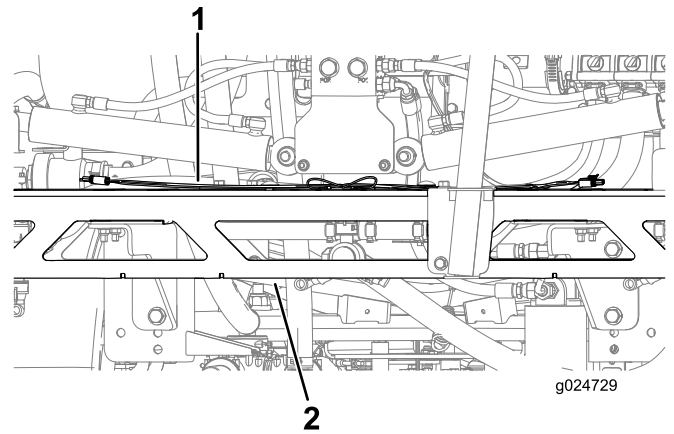


Figure 12

- Wiring harness
- Boom-frame channel

- Connect the wiring harness to the light.

4

Installing the Horn Switch

Parts needed for this procedure:

| | |
|---|---------------------------------------|
| 1 | Horn switch, jam nut, and knurled nut |
| 1 | Switch button |

Removing the Control Panel

- Remove the knob from differential-lock rod (Figure 13).

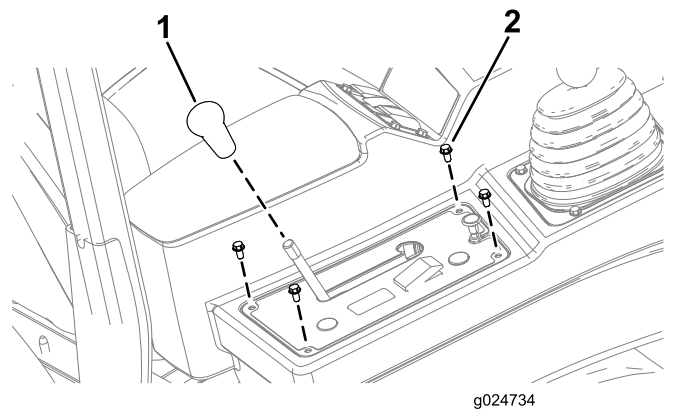


Figure 13

- Knob
- Hex-head screw (1/4 x 1/2 inch)

- Remove the 4 hex-head screws (1/4 x 1/2 inch) that secure the control-panel cover.

- Lift the control-panel cover and the choke control (Figure 14).

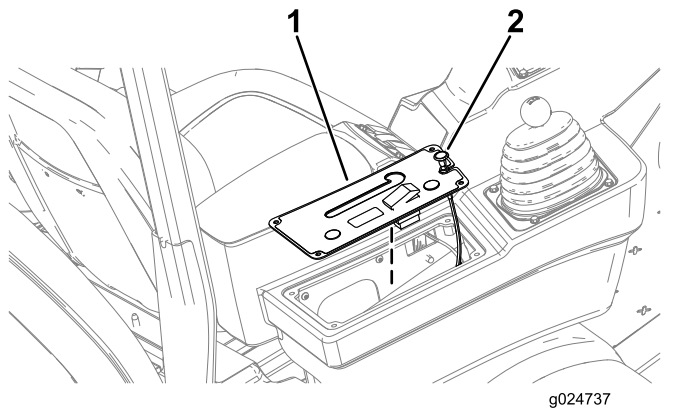


Figure 14

- Control-panel cover
- Choke control

- Remove the forward, round plug from the control-panel cover (Figure 15).

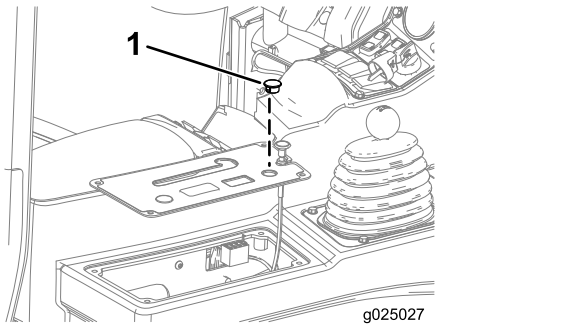


Figure 15

- Forward, round plug

Assembling the Horn Switch

- Thread the jam nut onto the body of the horn switch (Figure 16).

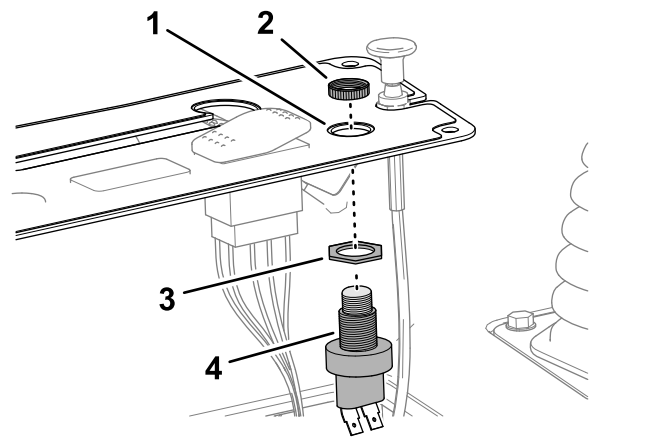


Figure 16

- Hole (control-panel cover)
- Knurled nut
- Jam nut
- Horn switch

- Insert the horn switch into the hole in the control-panel cover, and secure the switch with the knurled nut.
- Thread the switch button onto the horn switch (Figure 17).

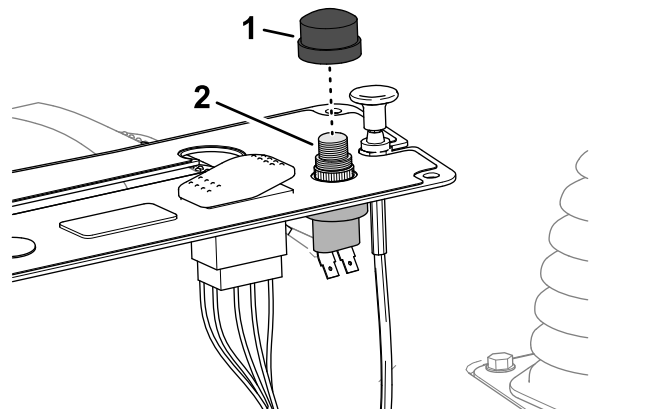


Figure 17

- Switch button
- Horn switch

- Connect the 2 terminals of the wire harness labeled HORN SWITCH to the terminals of the horn switch (Figure 18).

5

Installing the Seat Lock

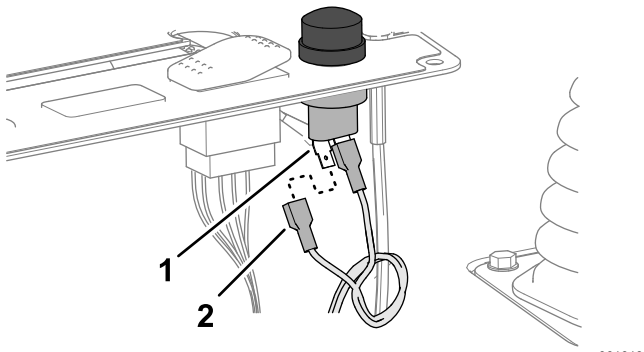


Figure 18

1. Blade terminal (horn switch)
2. Harness terminal (labeled HORN SWITCH)

Parts needed for this procedure:

| | |
|---|-----------------------------|
| 1 | Lock-mount bracket |
| 1 | Latch |
| 1 | Grip |
| 1 | Hex-head screw (12 x 20 mm) |
| 1 | Locknut (12 mm) |

Assembling the Control Panel

1. Align the control-panel cover to the side console (Figure 19).

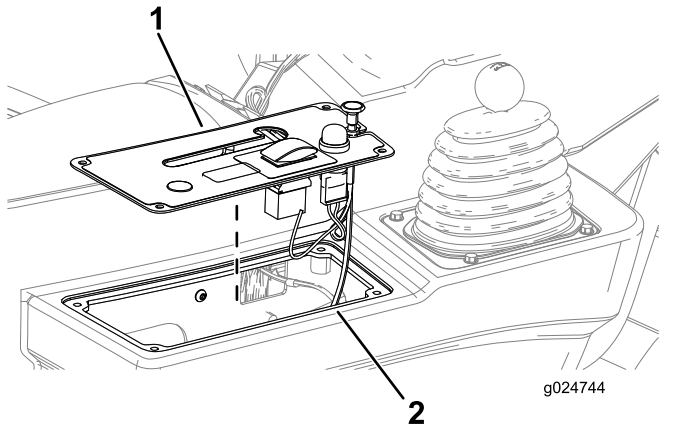


Figure 19

1. Control-panel cover
2. Side console

2. Secure the control-panel cover to the side console with the 4 hex-head screws (1/4 x 1/2 inch) that you removed in [Removing the Control Panel](#) (page 6).
3. Thread the knob onto the differential-lock rod.

Procedure

1. Remove the hairpin from the clevis pin (Figure 20).

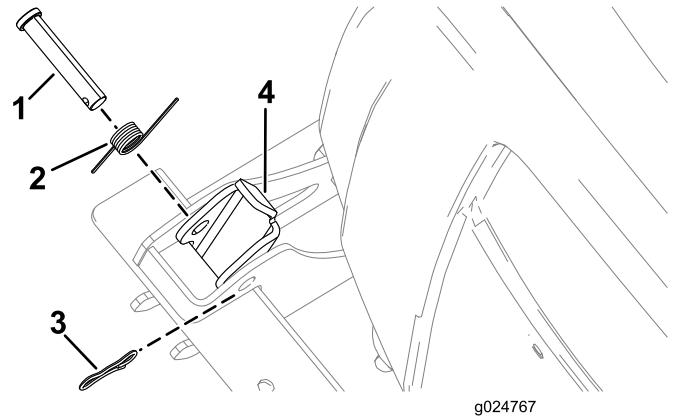


Figure 20

1. Clevis pin
2. Spring
3. Hairpin
4. Latch

2. Remove the clevis pin and spring from the latch (Figure 20).
3. Partially insert the clevis pin through the lock bracket (Figure 21).

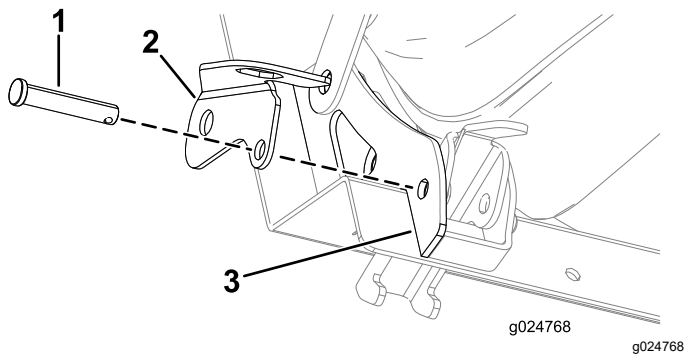


Figure 21

- 1. Clevis pin
- 2. Lock bracket
- 3. Outboard-seat gusset

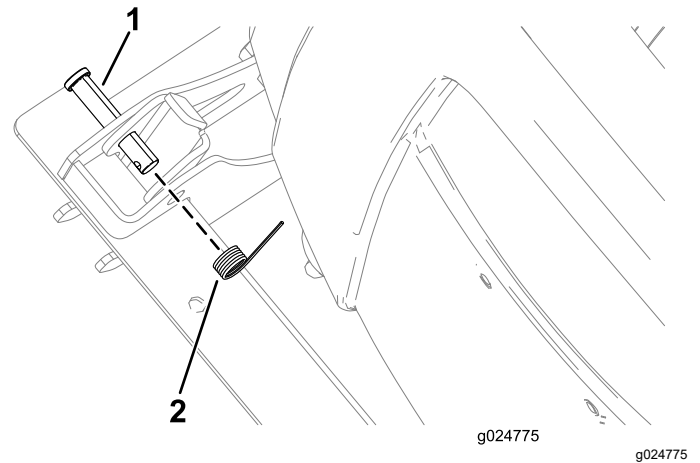


Figure 24

- 1. Clevis pin
- 2. Spring

- 4. Align the lock bracket and the clevis pin through the hole of the outboard-seat gusset (Figure 21).
- 5. Align the holes in the latch with the holes in the seat gussets (Figure 22).

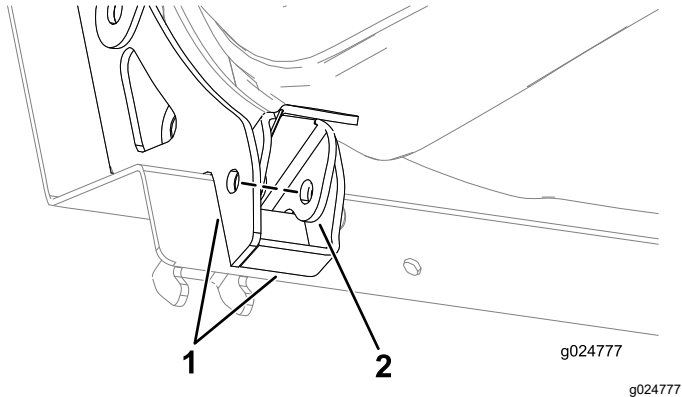


Figure 22

- 1. Seat gussets
- 2. Latch

- 6. Partially move the clevis pin inward through the hole in the seat latch (Figure 23).

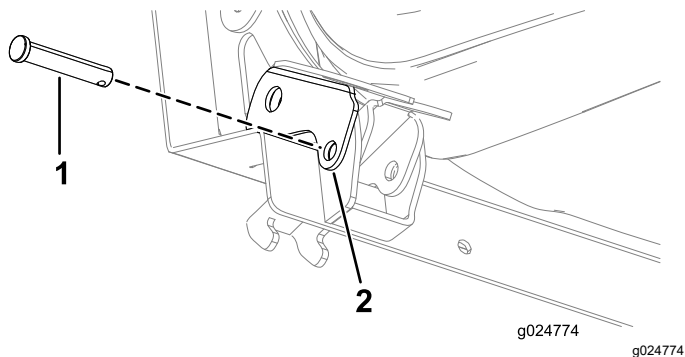


Figure 23

- 1. Clevis pin
- 2. Seat latch

- 7. Install the spring onto the clevis pin (Figure 24).

- 8. Fully insert the clevis pin through the holes in the seat latch and the inboard-seat gusset.
- 9. Secure the lock bracket to the outboard-seat gusset with the hex-head screw (12 x 20 mm) and the locknut (12 mm) as shown in Figure 25.

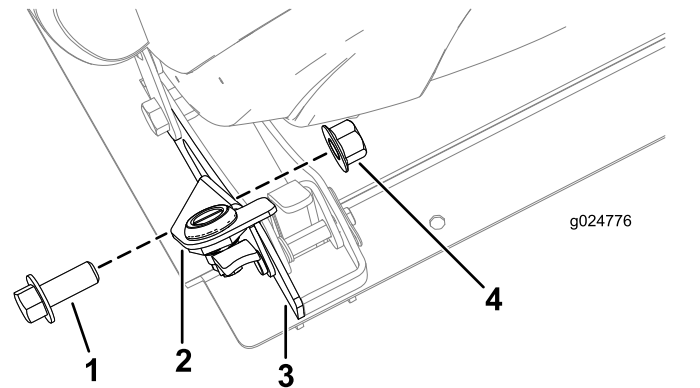


Figure 25

- 1. Hex-head screw (12 x 20 mm)
- 2. Lock bracket
- 3. Seat gusset
- 4. Locknut (12 mm)

6

Installing the Personal Protective Equipment Storage Bags

Parts needed for this procedure:

| | |
|---|---------------------------|
| 2 | PPE storage bag |
| 2 | Hoop rod |
| 2 | Mount bracket |
| 2 | U-bolt |
| 4 | Flange locknut (3/8 inch) |

Procedure

1. Insert a hoop rod into the sleeve of the PPE storage bag as shown in [Figure 26](#).

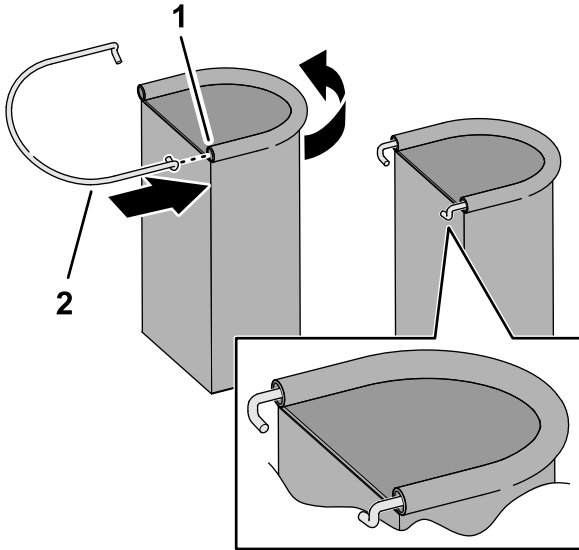


Figure 26

g361783

1. Hoop rod
2. Sleeve (PPE storage bag)

2. Repeat step 1 for the other hoop and bag.
3. Install the mount bracket to the rollbar tube ([Figure 27](#)) with a U-bolt and 2 flange locknuts (3/8 inch).

Note: Ensure that the bracket location does not cover the rollbar decals.

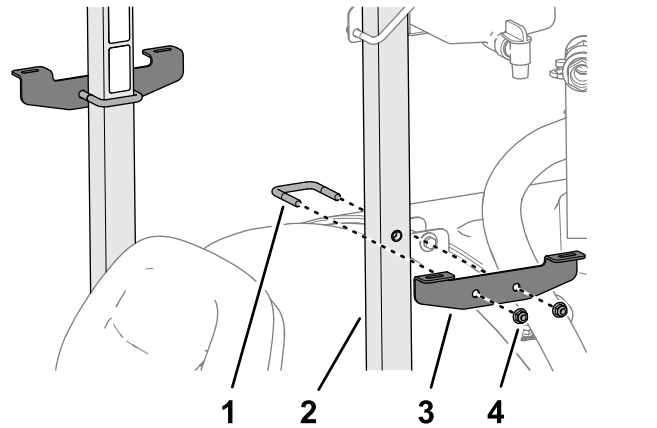


Figure 27

g361784

1. U-bolt
2. Rollbar tube
3. Mount bracket
4. Flange locknut (3/8 inch)

4. Repeat step 3 at the other side of the machine.
5. Insert the hooks of the hoop rod into the slots in the mount bracket ([Figure 28](#)).

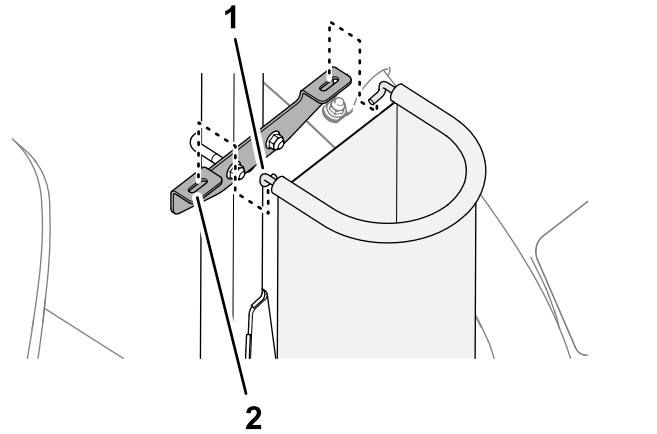


Figure 28

g361785

1. Hook (hoop rod)
2. Slot (mount bracket)

6. Repeat step 5 at the other side of the machine.

7

Applying the Decals to the Machine

Parts needed for this procedure:

| | |
|---|-----------------------|
| 2 | Boom lift-point decal |
| 1 | Tank-contents decal |
| 1 | Regulatory decal |

Applying the Boom Lift-Point Decals

1. Locate the middle of an outer boom, between the brackets, as shown in [Figure 29](#).

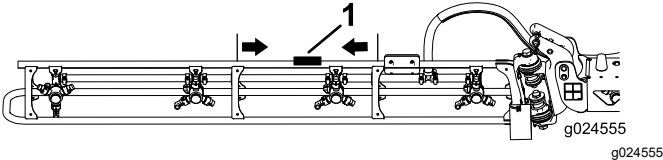


Figure 29

1. Boom lift-point decal

2. Clean the surface of the truss tube at the location that you identified in step 1, ensuring the surface is free of dirt, grease, or other foreign material.
3. Remove 1 of the decals from the backing, and adhere the decal to truss tube of the boom.
4. Repeat steps 1 through 3 at the other boom.

Applying the Tank-Contents Decal

Use the erasable surface of the decal to record the tank content.

Affix the tank-contents decal to the rollbar, directly behind the operator's position.

Applying the Regulatory Decal

1. Clean the surface of the step below the model-serial plate and the emissions decal.

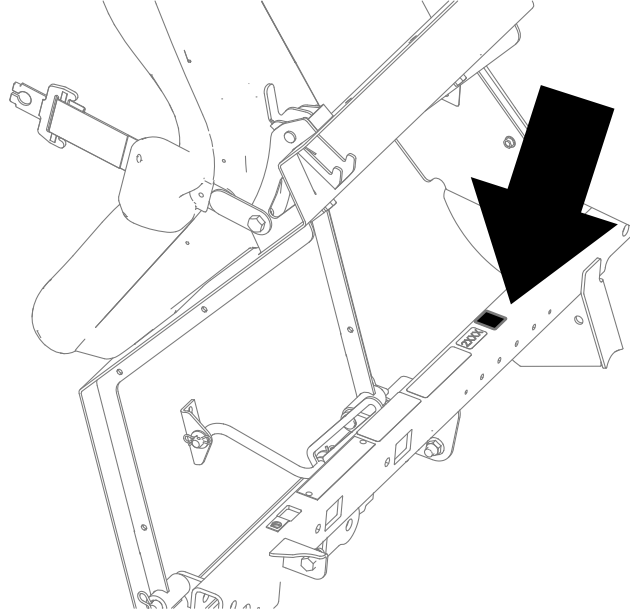


Figure 30

g416817

2. Remove the backing from the regulatory decal, and adhere it to the step.
3. Adhere the regulatory decal below the emissions decal.



Count on it.