



# MH-400 Conveyor/Swivel/Caddy

Model No. 44938

Form No. 3460-438 Rev A

## Operator's Manual

### ⚠ WARNING

#### CALIFORNIA Proposition 65 Warning

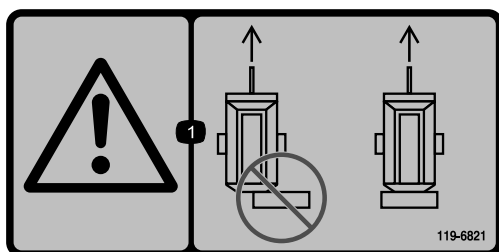
Use of this product may cause exposure to chemicals known to the State of California to cause cancer, birth defects, or other reproductive harm.

## Safety

### Safety and Instructional Decals



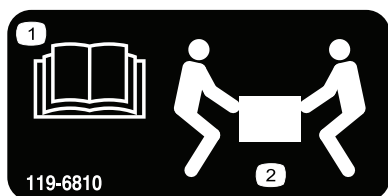
Safety decals and instructions are easily visible to the operator and are located near any area of potential danger. Replace any decal that is damaged or missing.



119-6821

decal119-6821

1. Warning—do not transport the machine when the conveyor is extended; only transport the machine when the conveyor is in the stored position.



119-6810

decal119-6810

1. Read the *Operator's Manual*.
2. Use two people required to lift.



119-0217

decal119-0217

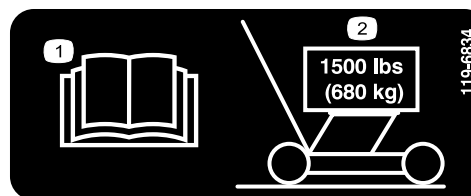
1. Warning—stop the engine; stay away from moving parts; keep all guards and shields in place.



119-6851

decal119-6851

1. Warning—do not stand on machine.

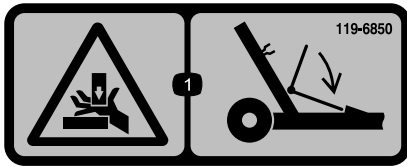


119-6834

decal119-6834

1. Read the *Operator's Manual*.
2. Maximum load is 1500 lbs (680 kg)





decal119-6850

## 119-6850

1. Crushing hazard of hand—use safety stand lock.

# Setup

## Loose Parts

Use the chart below to verify that all parts have been shipped.

Procedure	Description	Qty.	Use
<b>1</b>	Option caddy	1	Assemble the option caddy
	Handle	1	
	Pin	1	
<b>2</b>	Handle	2	Assemble the cross conveyor
	Bolt (1/4 x 3/4 inch)	8	
	Flange lock nut (1/4 inch)	8	
<b>3</b>	No parts required	—	Using the option caddy
<b>4</b>	No parts required	—	Install the cross conveyor/swivel
<b>5</b>	No parts required	—	Connect the hydraulic hoses

## Media and Additional Parts

Description	Qty.	Use
Operators Manual	1	Refer to for set up and operating instructions
Parts catalog	1	Use to reference part numbers

# 1

## Assembling the Option Caddy

Parts needed for this procedure:

1	Option caddy
1	Handle
1	Pin

### Procedure

**Note:** Remove all wooden shipping blocks and banding before proceeding with installation.

1. Install the handle into the option caddy and secure it with the pin (Figure 1).

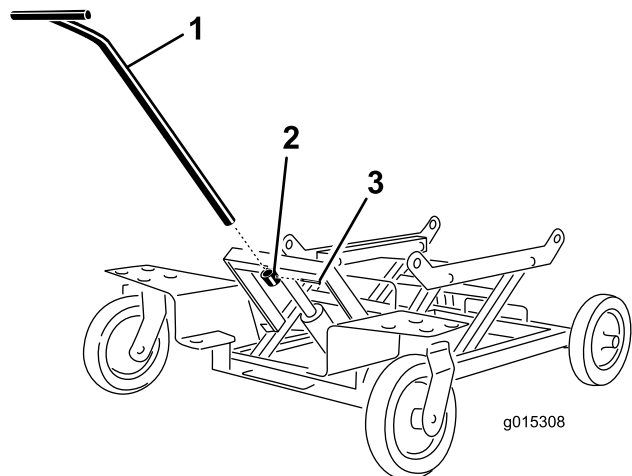


Figure 1

1. Handle
2. Option caddy
3. Pin

2. Check that the tire pressure on all tires is 30 psi (206 kPa) maximum.

# 2

## Assembling the Cross Conveyor

Parts needed for this procedure:

2	Handle
8	Bolt (1/4 x 3/4 inch)
8	Flange lock nut (1/4 inch)

### Procedure

Attach the handles to the cross conveyor, below the side rails, using (4) 1/4 x 3/4 inch bolts and flange lock nuts (Figure 2).

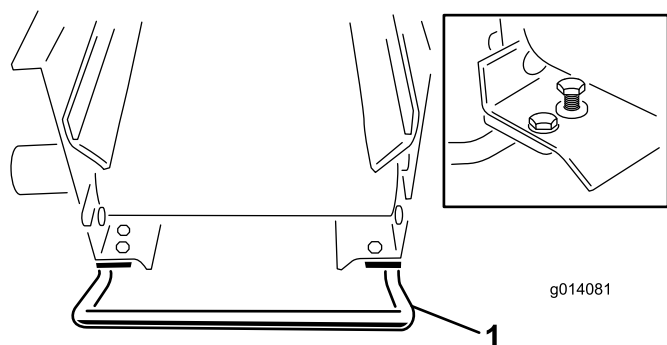


Figure 2

1. Conveyor handles

# 3

## Using the Option Caddy

No Parts Required

### Procedure

The option caddy is designed for one person to lift, transport, and mount the cross conveyor/swivel onto the MH-400.

### ⚠ WARNING

The option caddy has a maximum carrying load of 1500 lb (680 kg). Do not carry people on it.

1. Lift the cross conveyor/swivel onto the option caddy.
2. Transport the option to the rear of the MH-400 and raise it into position for mounting.

### **⚠ CAUTION**

**Do not leave loads unattended or in the raised position.**

3. Install the option into the quick-attach brackets on the rear of the MH-400 (See the Installing the Cross Conveyor/Swivel).
4. Lower the caddy and roll the it back until it is completely free from the option.

**Note:** Do not maneuver the caddy in muddy or soft terrain, otherwise it will be difficult to move.

## **4**

# **Installing the Cross Conveyor/Swivel**

**No Parts Required**

## **Procedure**

The cross conveyor spreads material to either side of the MH-400 while the swivel kit allows the cross conveyor to swivel freely in a 270 degree arc, or to be locked into one of five fixed positions, 45 degrees a part.

**Note:** The MH-400 comes equipped with a pair of quick attach mounting clamps. Use these clamps to mount the cross conveyor/swivel to the MH-400.

1. Position the cross conveyor/swivel so the swivel kits two mounting brackets face toward the rear (away from the MH-400).
2. Ensure that the cross conveyor/swivel is centered between the mounting brackets and that the motor extends out the same side as the control handles on the MH-400.
3. Remove the safety latch clips from the clamp handles (Figure 3).
4. Lift the safety latch, then lift the option attachment clamp handles, and release the lock rings from the lock pins (Figure 3).
5. Slide the rear option attachment clamp assembly out of the quick-attach slots (Figure 3).

6. With assistance, insert the front edge of the cross conveyor/swivel up and under the rear of the MH-400 into the front clamps on the brackets (Figure 3).
  7. While supporting the cross conveyor/swivel, slide the rear option attachment clamp assembly back into the slots in the brackets, and over the rear edge (Figure 3).
  8. Ensure that the cross conveyor/swivel is centered between the brackets. Then re-install the lock rings over the lock pins and push down on the clamp handles
- Note:** If the clamp assembly is too loose and the cross conveyor/swivel slides within the clamps, turn the lock rings into the clamps a few turns until the cross conveyor/swivel is secure.
- Important:** Do not over-tighten the clamps. This may bend the edges of the cross conveyor/swivel.
9. Reinstall the safety latch clips to the clamp handles (Figure 3).

### **⚠ CAUTION**

**Ensure that you reinstall the safety latch clips into the clamps. Otherwise, the clamps may open during operation.**

### **⚠ WARNING**

**The options are heavy. Use an assistant to help lift the cross conveyor/swivel.**

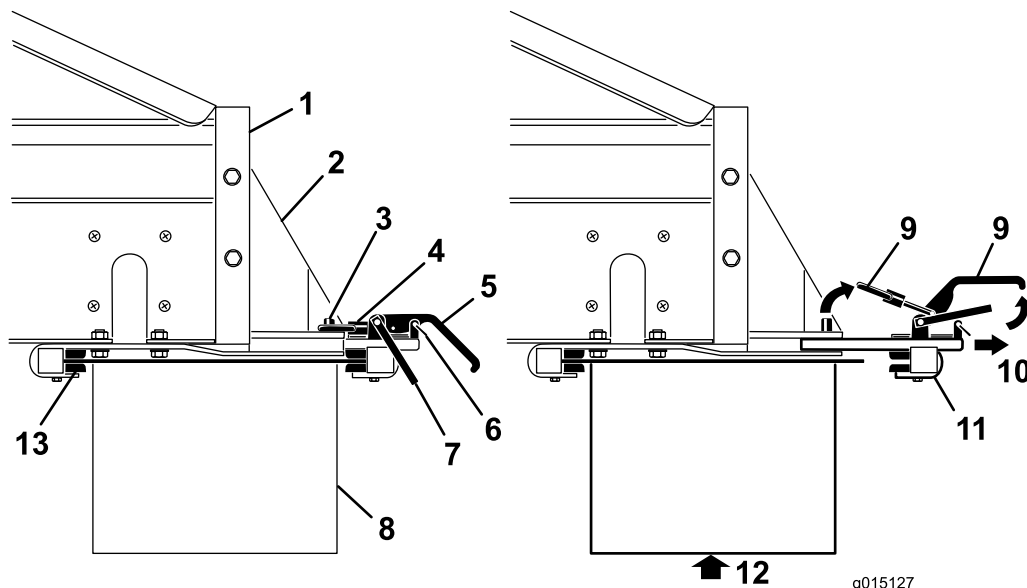


Figure 3

- |  |  |
|--|--|
| <ol style="list-style-type: none"> <li>1. Rear of MH-400</li> <li>2. Option attachment bracket</li> <li>3. Lock pin</li> <li>4. Lock ring</li> <li>5. Clamp handle</li> <li>6. Safety latch clip</li> <li>7. Safety latch</li> </ol> | <ol style="list-style-type: none"> <li>8. Option</li> <li>9. Lift</li> <li>10. Pull</li> <li>11. Rear clamp assembly</li> <li>12. Support the option before removing the clamps</li> <li>13. Front clamp brackets</li> </ol> |
|--|--|

# 5

## Connecting the Hydraulic Hoses

No Parts Required

### Procedure

#### ⚠ WARNING

Ensure that the tow vehicle is turned off before making the hydraulic connections, to prevent the cross conveyor/swivel from accidentally turning on.

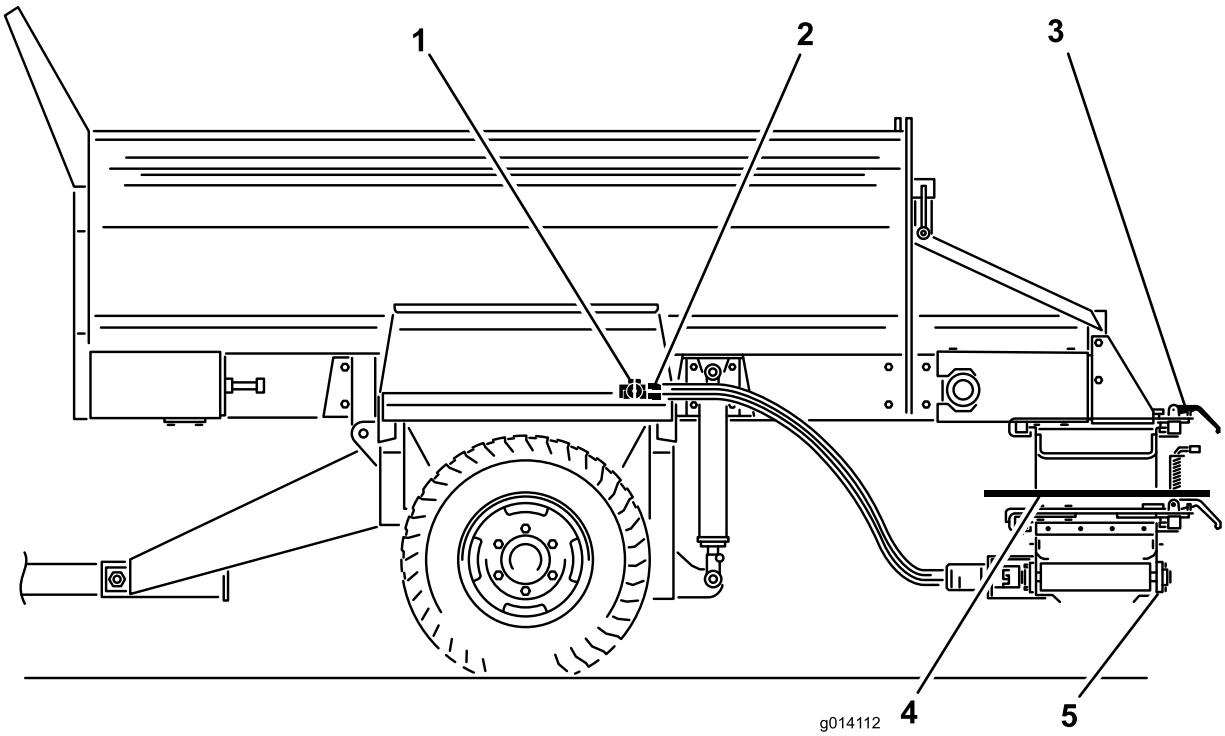
Connect the hydraulic hoses to the option control valve on the MH-400 as follows (Figure 4):

- Pull back (or push forward) on the outer sleeve of the female connector and insert the male connector.
- Hold the male connector firmly in place and release the outer sleeve of the female connector.

- Ensure that the connectors are pushed all the way in and are securely locked in place. Ensure that the hydraulic hoses run horizontally
- With the tow vehicle hydraulics operating, pull back on the option control lever on the SH models or start the option using the option start button on the wireless controller on the EH models, and ensure that the cross conveyor/swivel is operating properly.

#### ⚠ WARNING

- Make sure all hydraulic line connectors are tight, and all hydraulic hoses and lines are in good condition before applying pressure to the system.
- Keep body and hands away from pin hole leaks in hydraulic lines that eject high pressure hydraulic fluid. Use cardboard or paper to find hydraulic leaks. Hydraulic fluid escaping under pressure can penetrate skin and cause injury. Fluid accidentally injected into the skin must be surgically removed within a few hours by a doctor familiar with this form of injury or gangrene may result.



**Figure 4**

- |                         |                   |
|-------------------------|-------------------|
| 1. Option control valve | 4. Swivel kit     |
| 2. Hose connections     | 5. Cross conveyor |
| 3. Quick attach clamps  |                   |

# Operation

## Operating the Cross Conveyor

### Extending and Retracting the Cross Conveyor

#### ⚠ CAUTION

Always return the cross conveyor to the center position when traveling, otherwise the cross conveyor can hit people or objects, and can also be damaged.

1. Remove the safety pins from both option attachment clamps on the swivel kit.
2. Loosen the option attachment clamp brackets.
3. Slide the conveyor to the center or side.
4. Re-tighten the clamp brackets.
5. Re-install the safety pins.
6. On SH models adjust the speed of the cross conveyor with the hydraulic lever on the right. On EH models adjust the speed of the cross conveyor with the wireless remote.

**Note:** Always lower the hopper before adjusting the cross conveyor. Otherwise, the cross conveyor will rest at an angle.

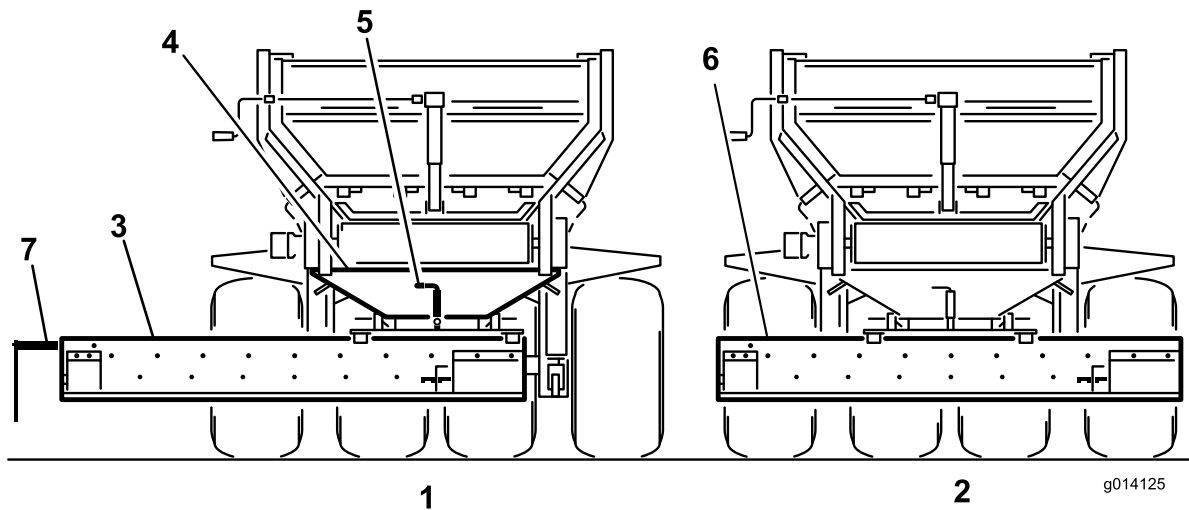


Figure 5

1. Extended position when conveying
2. Centered position when traveling
3. Cross conveyor
4. Swivel kit
5. Swivel lock pin
6. Remove or flip up the deflector
7. Material outlet (motor end)

## Spreading Material from the Cross Conveyor

1. Turn off the tow vehicle.
2. On SH models using the control levers, turn on the option and the conveyor belt (unload position).
3. Open the adjustable section of the rear gate to allow for the desired flow rate. You may have to experiment until you get the desired flow and spread depth. Other variables include ground speed and the type of material
4. Turn on the tow vehicle hydraulics.
5. On SH models, turn off the tow vehicle hydraulics to stop material movement or turn off the on/off pendant switch.

**Note:** For SH models the on/off pendant switch stops the floor conveyor belt, not the cross conveyor.

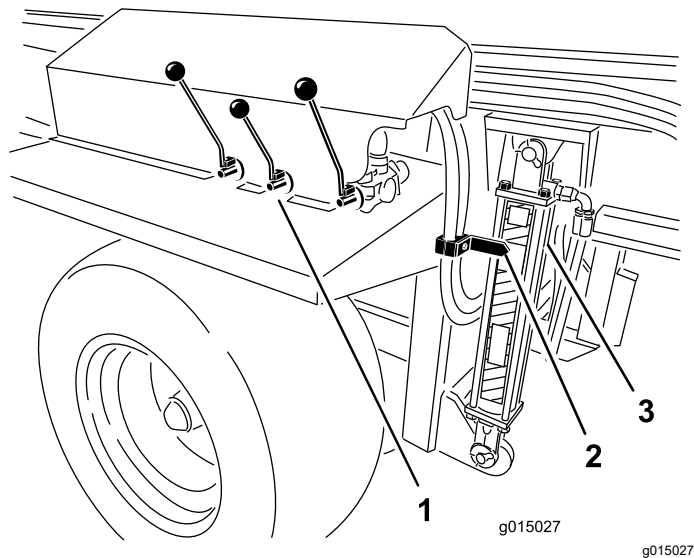
6. On EH models, operate the option and the conveyor belt with the wireless remote.
7. When finishing using the cross conveyor, always return it to the center position.

# Operating the Swivel Kit

To direct the flow of material from the cross conveyor in any direction, pull up the spring-loaded locking pin on the swivel kit into the unlock or open position. This allows you to manually move the cross conveyor freely from side to side on the swivel bearing (Figure 5).

To keep the cross conveyor in a fixed position, release the spring-loaded locking pin into one of the five locking positions on the swivel kit.

**Note:** When traveling over uneven terrain, raise the machine to the maximum safe traveling range. This provides more ground clearance for the cross conveyor/swivel.



**Figure 6**

- |                       |             |
|-----------------------|-------------|
| 1. Hydraulic controls | 3. Cylinder |
| 2. Arrow              |             |



# Declaration of Incorporation

The Toro Company, 8111 Lyndale Ave. South, Bloomington, MN, USA declares that the following unit(s) conform(s) to the directives listed, when installed in accordance with the accompanying instructions onto certain Toro models as indicated on the relevant Declarations of Conformity.

Model No.	Serial No.	Product Description	Invoice Description	General Description	Directive
44938	—	MH-400 Conveyor/Swivel/Caddy	MH-400 CONVEYOR/SWIVEL/CADDY	MH-400 Conveyor/Swivel/Caddy	2006/42/EC, 2000/14/EC

Relevant technical documentation has been compiled as required per Part B of Annex VII of 2006/42/EC.

We will undertake to transmit, in response to requests by national authorities, relevant information on this partly completed machinery. The method of transmission shall be electronic transmittal.

This machinery shall not be put into service until incorporated into approved Toro models as indicated on the associated Declaration of Conformity and in accordance with all instructions, whereby it can be declared in conformity with all relevant Directives.

Certified:



Tom Langworthy  
Engineering Director  
8111 Lyndale Ave. South  
Bloomington, MN 55420, USA  
November 9, 2022

Authorized Representative:

Marcel Dutrieux  
Manager European Product Integrity  
Toro Europe NV  
Nijverheidsstraat 5  
2260 Oevel  
Belgium

# UK Declaration of Incorporation

The Toro Company, 8111 Lyndale Ave. South, Bloomington, MN, USA declares that the following unit(s) conform(s) to the regulations listed, when installed in accordance with the accompanying instructions onto certain Toro models as indicated on the relevant Declarations of Conformity.

Model No.	Serial No.	Product Description	Invoice Description	General Description	Regulation
44938	—	MH-400 Conveyor/Swivel/Caddy	MH-400 CONVEYOR/SWIVEL/CADDY	MH-400 Conveyor/Swivel/Caddy	S.I. 2008 No. 1597, S.I. 2001 No. 1701

Relevant technical documentation has been compiled as required per Schedule 10 of S.I. 2008 No. 1597.

We will undertake to transmit, in response to requests by national authorities, relevant information on this partly completed machinery. The method of transmission shall be electronic transmittal.

This machinery shall not be put into service until incorporated into approved Toro models as indicated on the associated Declaration of Conformity and in accordance with all instructions, whereby it can be declared in conformity with all relevant Regulations.

This declaration has been issued under the sole responsibility of the manufacturer.  
The object of the declaration is in conformity with relevant UK legislation.



Tom Langworthy  
Engineering Director  
8111 Lyndale Ave. South  
Bloomington, MN 55420, USA  
November 9, 2022

Authorized Representative:

Marcel Dutrieux  
Manager European Product Integrity  
Toro U.K. Limited  
Spellbrook Lane West  
Bishop's Stortford  
CM23 4BU  
United Kingdom

## EEA/UK Privacy Notice

### **Toro's Use of Your Personal Information**

The Toro Company ("Toro") respects your privacy. When you purchase our products, we may collect certain personal information about you, either directly from you or through your local Toro company or dealer. Toro uses this information to fulfil contractual obligations - such as to register your warranty, process your warranty claim or to contact you in the event of a product recall - and for legitimate business purposes - such as to gauge customer satisfaction, improve our products or provide you with product information which may be of interest. Toro may share your information with our subsidiaries, affiliates, dealers or other business partners in connection these activities. We may also disclose personal information when required by law or in connection with the sale, purchase or merger of a business. We will never sell your personal information to any other company for marketing purposes.

### **Retention of your Personal Information**

Toro will keep your personal information as long as it is relevant for the above purposes and in accordance with legal requirements. For more information about applicable retention periods please contact [legal@toro.com](mailto:legal@toro.com).

### **Toro's Commitment to Security**

Your personal information may be processed in the US or another country which may have less strict data protection laws than your country of residence. Whenever we transfer your information outside of your country of residence, we will take legally required steps to ensure that appropriate safeguards are in place to protect your information and to make sure it is treated securely.

### **Access and Correction**

You may have the right to correct or review your personal data, or object to or restrict the processing of your data. To do so, please contact us by email at [legal@toro.com](mailto:legal@toro.com). If you have concerns about the way in which Toro has handled your information, we encourage you to raise this directly with us. Please note that European residents have the right to complain to your Data Protection Authority.



## Toro General Commercial Product Warranty

### A Two-Year Limited Warranty

#### Conditions and Products Covered

The Toro Company and its affiliate, Toro Warranty Company, pursuant to an agreement between them, jointly warrant your Toro Commercial product ("Product") to be free from defects in materials or workmanship for two years or 1500 operational hours\*, whichever occurs first. This warranty is applicable to all products with the exception of Aerators (refer to separate warranty statements for these products). Where a warrantable condition exists, we will repair the Product at no cost to you including diagnostics, labor, parts, and transportation. This warranty begins on the date the Product is delivered to the original retail purchaser.

\* Product equipped with an hour meter.

#### Instructions for Obtaining Warranty Service

You are responsible for notifying the Commercial Products Distributor or Authorized Commercial Products Dealer from whom you purchased the Product as soon as you believe a warrantable condition exists. If you need help locating a Commercial Products Distributor or Authorized Dealer, or if you have questions regarding your warranty rights or responsibilities, you may contact us at:

Toro Commercial Products Service Department  
Toro Warranty Company  
8111 Lyndale Avenue South  
Bloomington, MN 55420-1196  
  
952-888-8801 or 800-952-2740  
E-mail: commercial.warranty@toro.com

#### Owner Responsibilities

As the Product owner, you are responsible for required maintenance and adjustments stated in your *Operator's Manual*. Failure to perform required maintenance and adjustments can be grounds for disallowing a warranty claim.

#### Items and Conditions Not Covered

Not all product failures or malfunctions that occur during the warranty period are defects in materials or workmanship. This warranty does not cover the following:

- Product failures which result from the use of non-Toro replacement parts, or from installation and use of add-on, or modified non-Toro branded accessories and products. A separate warranty may be provided by the manufacturer of these items.
- Product failures which result from failure to perform recommended maintenance and/or adjustments. Failure to properly maintain your Toro product per the Recommended Maintenance listed in the *Operator's Manual* can result in claims for warranty being denied.
- Product failures which result from operating the Product in an abusive, negligent, or reckless manner.
- Parts subject to consumption through use unless found to be defective. Examples of parts which are consumed, or used up, during normal Product operation include, but are not limited to, brake pads and linings, clutch linings, blades, reels, rollers and bearings (sealed or greasable), bed knives, spark plugs, castor wheels and bearings, tires, filters, belts, and certain sprayer components such as diaphragms, nozzles, and check valves, etc.
- Failures caused by outside influence. Conditions considered to be outside influence include, but are not limited to, weather, storage practices, contamination, use of unapproved fuels, coolants, lubricants, additives, fertilizers, water, or chemicals, etc.
- Failure or performance issues due to the use of fuels (e.g. gasoline, diesel, or biodiesel) that do not conform to their respective industry standards.

- Normal noise, vibration, wear and tear, and deterioration.
- Normal "wear and tear" includes, but is not limited to, damage to seats due to wear or abrasion, worn painted surfaces, scratched decals or windows, etc.

#### Parts

Parts scheduled for replacement as required maintenance are warranted for the period of time up to the scheduled replacement time for that part. Parts replaced under this warranty are covered for the duration of the original product warranty and become the property of Toro. Toro will make the final decision whether to repair any existing part or assembly or replace it. Toro may use remanufactured parts for warranty repairs.

#### Deep Cycle and Lithium-Ion Battery Warranty:

Deep cycle and Lithium-Ion batteries have a specified total number of kilowatt-hours they can deliver during their lifetime. Operating, recharging, and maintenance techniques can extend or reduce total battery life. As the batteries in this product are consumed, the amount of useful work between charging intervals will slowly decrease until the battery is completely worn out. Replacement of worn out batteries, due to normal consumption, is the responsibility of the product owner. Battery replacement may be required during the normal product warranty period at owner's expense. Note: (Lithium-Ion battery only): A Lithium-Ion battery has a part only prorated warranty beginning year 3 through year 5 based on the time in service and kilowatt hours used. Refer to the *Operator's Manual* for additional information.

#### Maintenance is at Owner's Expense

Engine tune-up, lubrication, cleaning and polishing, replacement of filters, coolant, and completing recommended maintenance are some of the normal services Toro products require that are at the owner's expense.

#### General Conditions

Repair by an Authorized Toro Distributor or Dealer is your sole remedy under this warranty.

**Neither The Toro Company nor Toro Warranty Company is liable for indirect, incidental or consequential damages in connection with the use of the Toro Products covered by this warranty, including any cost or expense of providing substitute equipment or service during reasonable periods of malfunction or non-use pending completion of repairs under this warranty. Except for the Emissions warranty referenced below, if applicable, there is no other express warranty. All implied warranties of merchantability and fitness for use are limited to the duration of this express warranty.**

Some states do not allow exclusions of incidental or consequential damages, or limitations on how long an implied warranty lasts, so the above exclusions and limitations may not apply to you. This warranty gives you specific legal rights, and you may also have other rights which vary from state to state.

#### Note regarding engine warranty:

The Emissions Control System on your Product may be covered by a separate warranty meeting requirements established by the U.S. Environmental Protection Agency (EPA) and/or the California Air Resources Board (CARB). The hour limitations set forth above do not apply to the Emissions Control System Warranty. Refer to the Engine Emission Control Warranty Statement supplied with your product or contained in the engine manufacturer's documentation for details.

#### Countries Other than the United States or Canada

Customers who have purchased Toro products exported from the United States or Canada should contact their Toro Distributor (Dealer) to obtain guarantee policies for your country, province, or state. If for any reason you are dissatisfied with your Distributor's service or have difficulty obtaining guarantee information, contact the Toro importer.