



Z287L

Z Master[®] with 72in SFS Side Discharge Mower

Model No. 74214—22000001 and Up

Parts Catalog

Ordering Replacement Parts

To order replacement parts, please supply: the part number, the quantity, and the description of each part desired.

Understanding Reference Numbers

Each identified part in an illustration has a reference number. The reference number for a part also appears in the parts list, along with other information about the part.

This catalog uses two special reference number formats, one to indicate parts in a service assembly and another to indicate the quantity of a given part in an illustration.

Service Assembly Reference Numbers

Parts in service assemblies have reference numbers in the form **a:b**. The **a** represents the reference number of the entire service assembly and the **b** represents a sequential number unique to each part within the service assembly.

For example, a wheel assembly might be identified by reference number **6**, the tire by **6:1**, the valve by **6:2**, and the wheel by **6:3**. When you order the assembly identified by reference number **6**, you receive all parts identified by reference numbers **6:1**, **6:2**, and **6:3**. However, you may also order any part individually.

Reference numbers of this type appear in illustrations and in part lists.

Reference Numbers Indicating Quantity

In an illustration, if a reference number indicates more than one part, the reference number has the form **nX y**. The **n** represents the quantity of the part, the **X** is the multiplication symbol, and the **y** represents the reference number.

For example, in an illustration, the reference number **2X 37** means that two of the parts identified by reference number **37** are indicated.

Contents

Description	Page	Description	Page
Front Frame Assembly	4	Piston/Crankshaft	
Caster and Wheel Assembly	5	(Kawasaki FD750D-AS03)	26
Rear Frame and Wheel Assembly	6	Valve/Camshaft	
Brake and Wheel Hub Assembly	7	(Kawasaki FD750D-AS03)	27
Steering Control Assembly	8	Lubrication Equipment	
Hydraulic System Assembly	9	(Kawasaki FD750D-AS03)	28
Seat Assembly	11	Cooling Equipment	
Frame and Deck Assembly	12	(Kawasaki FD750D-AS03)	29
Idler Assembly	13	Electric Equipment	
Stand Assembly	14	(Kawasaki FD750D-AS03)	30
Engine Assembly	15	Control Equipment	
Engine Assembly (Continued)	16	(Kawasaki FD750D-AS03)	31
Hood Assembly	17	Carburetor	
Cooling Mounting Frame Assembly	18	(Kawasaki FD750D-AS03)	32
Tank and Fuel Line Assembly	19	Air-Filter/Muffler	
Electrical System Assembly	20	(Kawasaki FD750D-AS03)	33
Deck, Deflector and Roller Assembly	21	Fuel-Tank/Fuel-Valve	
Spindle and Pulley Assembly	22	(Kawasaki FD750D-AS03)	34
Belt and Idler Arm Assembly	23	Starter	
Electrical Schematic	24	(Kawasaki FD750D-AS03)	35
Cylinder/Crankcase			
(Kawasaki FD750D-AS03)	25		

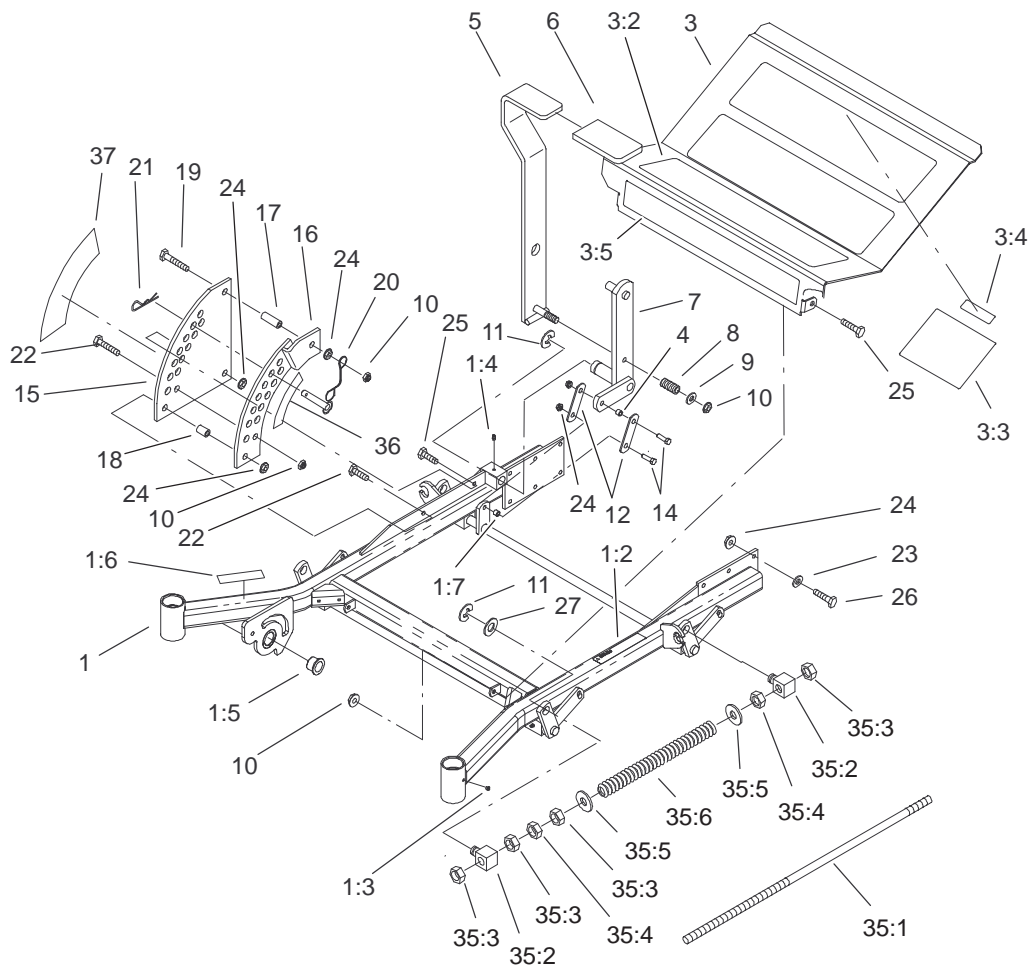
Accessories

Description	Model / Part No.	Description	Model / Part No.
Striping Kit	30163	Atomic Blade Assembly	104-1304
Hitch Kit	99-8925	Z Recycler Kit (72in)	100-9678

Part Description Abbreviations

Part descriptions in this catalog may include the following abbreviations.

Abbreviation	Meaning	Abbreviation	Meaning
AR	as required	HWHTF	hex washer head thread forming
ASM	assembly	INC	incorporated
CARR	carriage	LH	left hand
DEG	degrees	NI	nylon insert
FH	flat head	PPH	Phillips pan head
GA	gauge	PTH	Phillips truss head
HF	hex flange	PTO	power take off
HH	hex head	RH	right hand
HHF	hex head flange	SFH	slotted fillister head
HLH	hex lag head	SHH	slotted hex head
HJ	hex jam	SQH	square head
HOC	height-of-cut	SHWH	slotted hex washer head
HS	hex socket	SPH	slotted pan head
HSBH	hex socket button head	SRH	slotted round head
HSFH	hex socket flat head	STD	standard
HSH	hex socket head	TAP	self tapping
HWH	hex washer head	TTH	Torx truss head



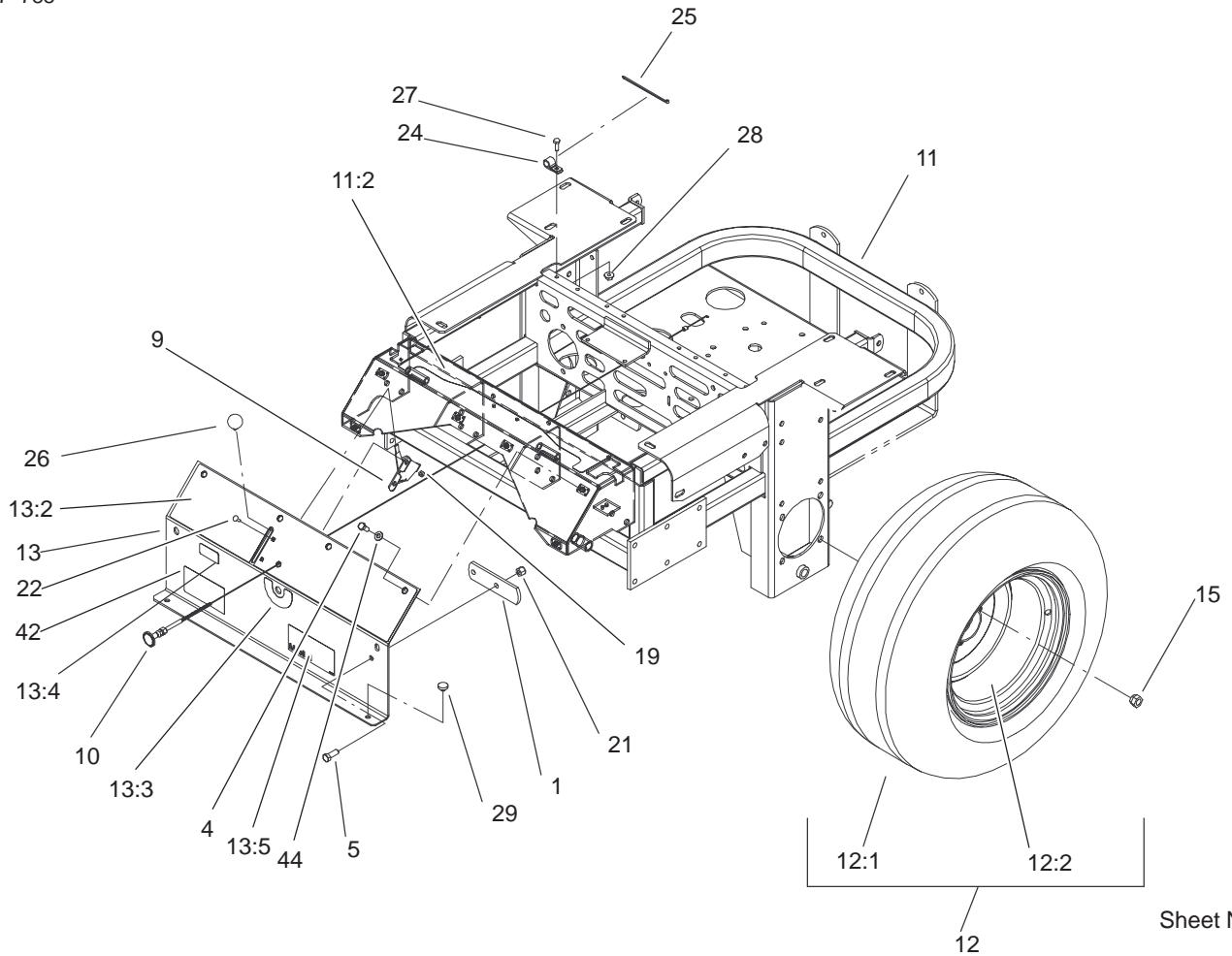
Sheet No.:2

Front Frame Assembly

Ref. No.	Part No.	Qty.	Description
1	104-5133	1	Frame ASM
1:2	1-633818	1	Decal-Warning
1:3	1-811010	2	Plug
1:4	302-19	5	Fitting-Grease
1:5	94-1291	2	Bushing-Special
1:6	104-7759	1	Decal-Warning
1:7	103-1918	1	Bushing
3	100-6509	1	Floorpan ASM
3:2	1-633553	3	Pad-Antiskid
3:3	1-633766	1	Decal-Check
3:4	98-5954	1	Decal-Missing, Cover
3:5	1-633737	1	Decal-Z-Master
4	103-1918	1	Bushing
5	103-2083-03	1	Lever-Lift
6	1-633295	1	Grip-Lever, Lift
7	103-2064-03	1	Arm-Lift, Deck
8	1-633325	1	Spring-Compression
9	3256-24	1	Washer-Flat
10	3296-39	5	Nut-Lock, NI
11	32151-103	5	Ring-Snap
12	1-633068	2	Arm-Lift, Deck
14	323-29	2	Screw-HH
15	1-633889-01	1	Plate-Lift, Deck
16	1-632899-01	1	Plate-Lift, Deck
17	1-633082	1	Bushing-Lever, Lift
18	1-633080	1	Bushing-Lever, Lift

Ref. No.	Part No.	Qty.	Description
19	323-13	1	Screw-HH
20	1-633097	1	Pin-Hitch W/Lanyard
21	1-806005	1	Pin-Hair
22	323-9	2	Screw-HH
23	98-5975	12	Washer-Belleville
24	3290-357	17	Nut-HHF
25	323-6	3	Screw-HH
26	323-7	12	Screw-HH
27	3256-29	4	Washer-Flat
☆35		2	Front Frame Spring ASM
35:1	1-633096	1	Rod-Lift, Deck
35:2	1-633441	2	Swivel-Deck Mount, Rear
35:3	3217-11	4	Nut-Hex
35:4	3218-6	2	Nut-Jam
35:5	3256-7	2	Washer-Flat
35:6	1-633064	1	Spring-Support, Deck
36	1-633706	1	Decal-Height, Deck
37	1-633345	1	Decal-Height, Deck

☆ Not serviced separately

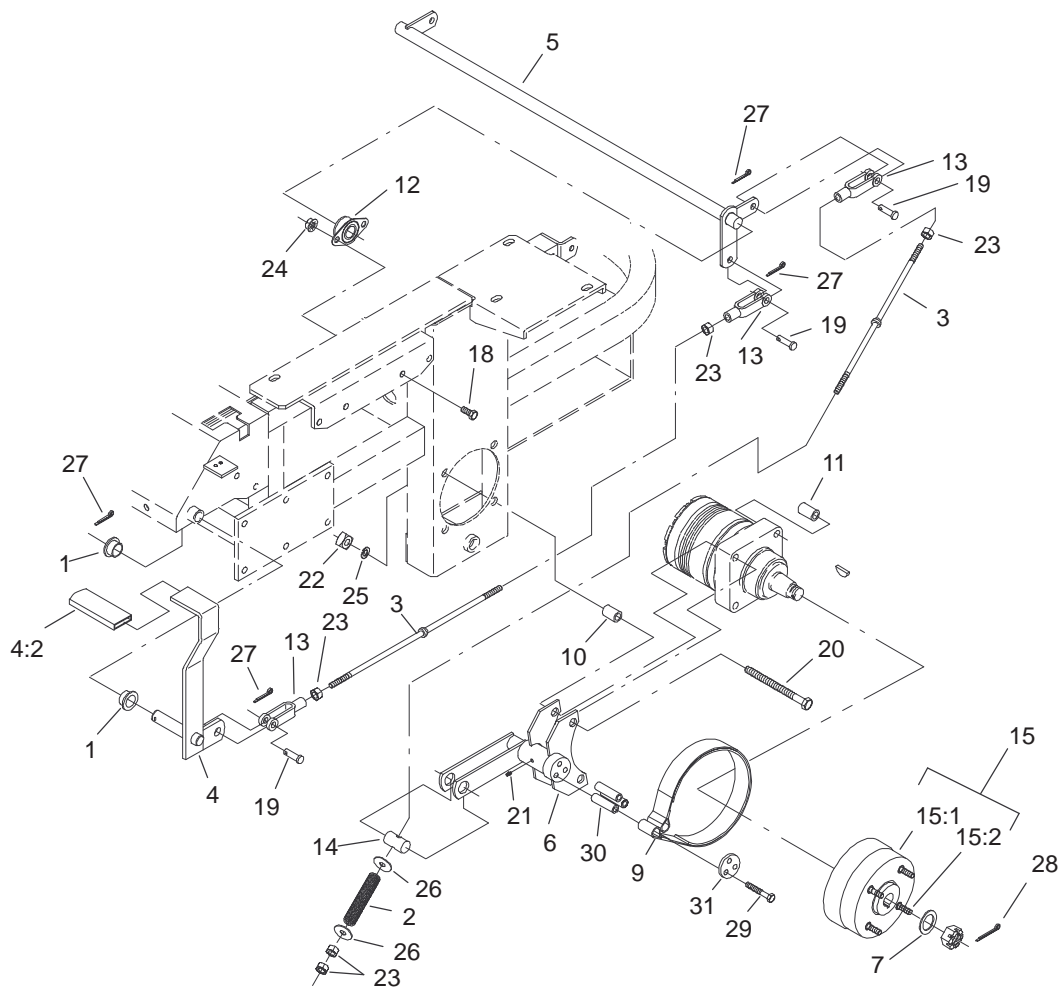


Sheet No.:4

Rear Frame and Wheel Assembly

Ref. No.	Part No.	Qty.	Description
1	1-633964-03	1	Stop-Brake, Park
4	322-3	6	Screw-HH
5	323-6	2	Screw-HH
9	1-633696	1	Cable-Throttle
10	1-603336	1	Control-Choke
11	105-6120	1	Rear Frame ASM
11:2	103-2433	1	Decal,Top Console
12	1-633970	2	Wheel & Tire ASM
12:1	1-633993	1	Tire
12:2	1-633992	1	Wheel
13	99-4623	1	Console ASM
13:2	100-4311	1	Decal-Panel, Control
13:3	103-0262	1	Decal-Valve, Fuel
13:4	98-4387	1	Decal-Protection, Ear
13:5	104-8172	1	Decal-Mobil 1
15	242-50	8	Nut-Lug
19	3296-2	2	Nut-Lock
21	3296-39	2	Nut-Lock, NI
22	1-807513	2	Bolt-CARR
24	1-513762	1	Clip-Loom
25	1-303335	1	Tie-Plastic
26	1-513592	1	Knob-Ball
27	321-4	1	Screw-HH
28	32128-33	1	Nut-HF
29	1-513658	2	Bumper-Catcher, Grass

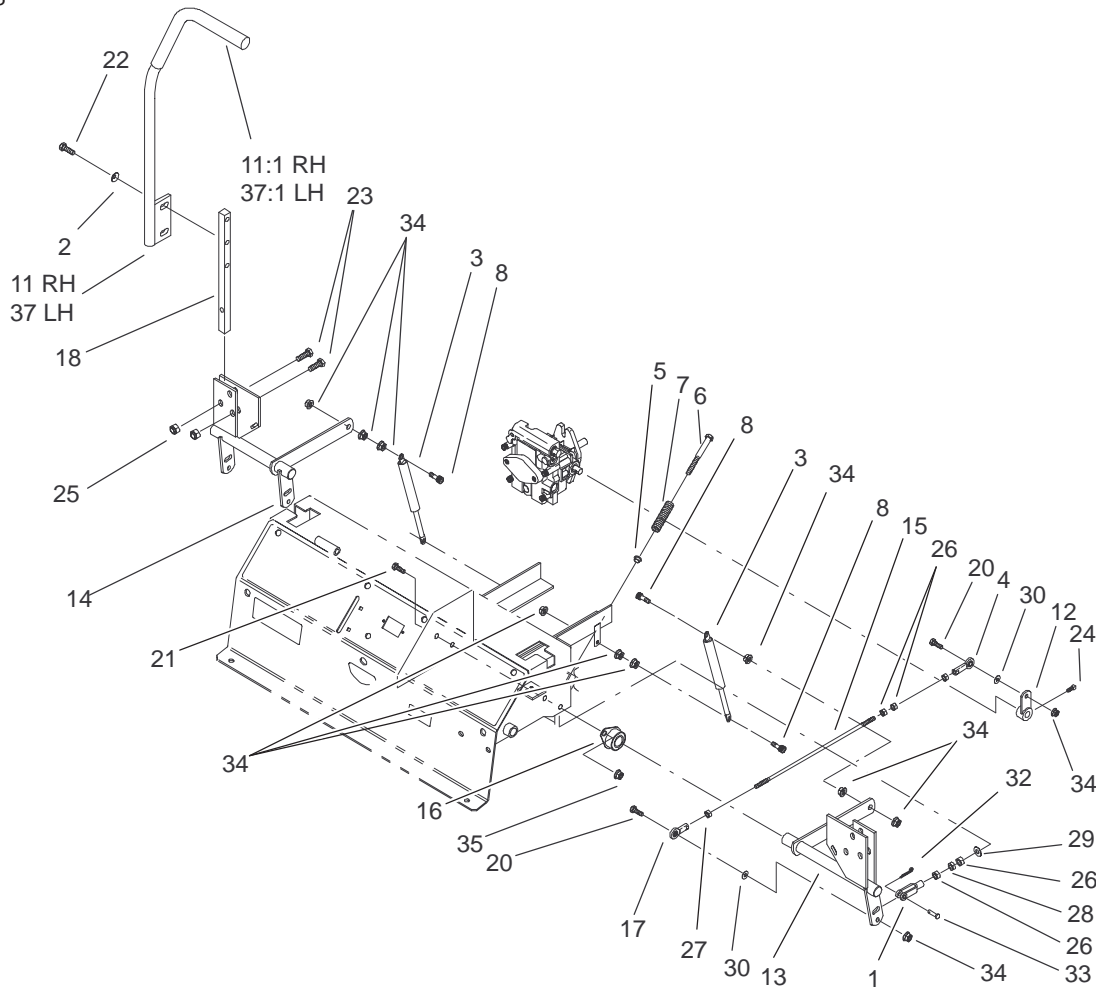
Ref. No.	Part No.	Qty.	Description
42	104-7787	1	Decal - Z287L
44	3256-23	6	Washer-Flat



Sheet No.:5

Brake and Wheel Hub Assembly

Ref. No.	Part No.	Qty.	Description	Ref. No.	Part No.	Qty.	Description
1	1-513140	2	Bearing-Control	27	3272-10	7	Pin-Cotter
2	1-633454	2	Spring-Brake	28	1-806800	2	Pin-Cotter
3	1-633477	3	Rod-Brake	29	322-9	6	Screw-HH
4	1-634500	1	Brake Lever ASM	30	103-0384	6	Spacer
4:2	1-633268	1	Grip-Lever, Brake	31	103-0374	2	Retainer-Band, Brake
5	1-632217-03	1	Shaft-Brake				
6	103-0354-03	2	Bracket-Brake				
7	1-523157	2	Washer-Spacer				
9	103-0355	2	Band-Brake				
10	1-633060	4	Spacer-Wheel, Short				
11	1-633062	4	Spacer-Wheel, Long				
12	1-633102	2	Bearing-Flange, Side				
13	1-633131	4	Yoke-Linkage, Brake				
14	1-633144	2	Pin-Trunion				
15	103-0590	2	Hub-Wheel				
15:1	103-0589	1	Hub-Wheel				
15:2	1-633926	4	Stud-Wheel				
18	323-4	4	Screw-HH				
19	1-808285	4	Pin-Clevis				
20	325-20	8	Screw-HH				
21	302-19	2	Fitting-Grease				
22	103-0131	8	Nut-Square				
23	3219-3	8	Nut-HH				
24	3290-357	4	Nut-HHF				
25	3253-7	8	Washer-Lock				
26	3256-4	4	Washer-Flat				

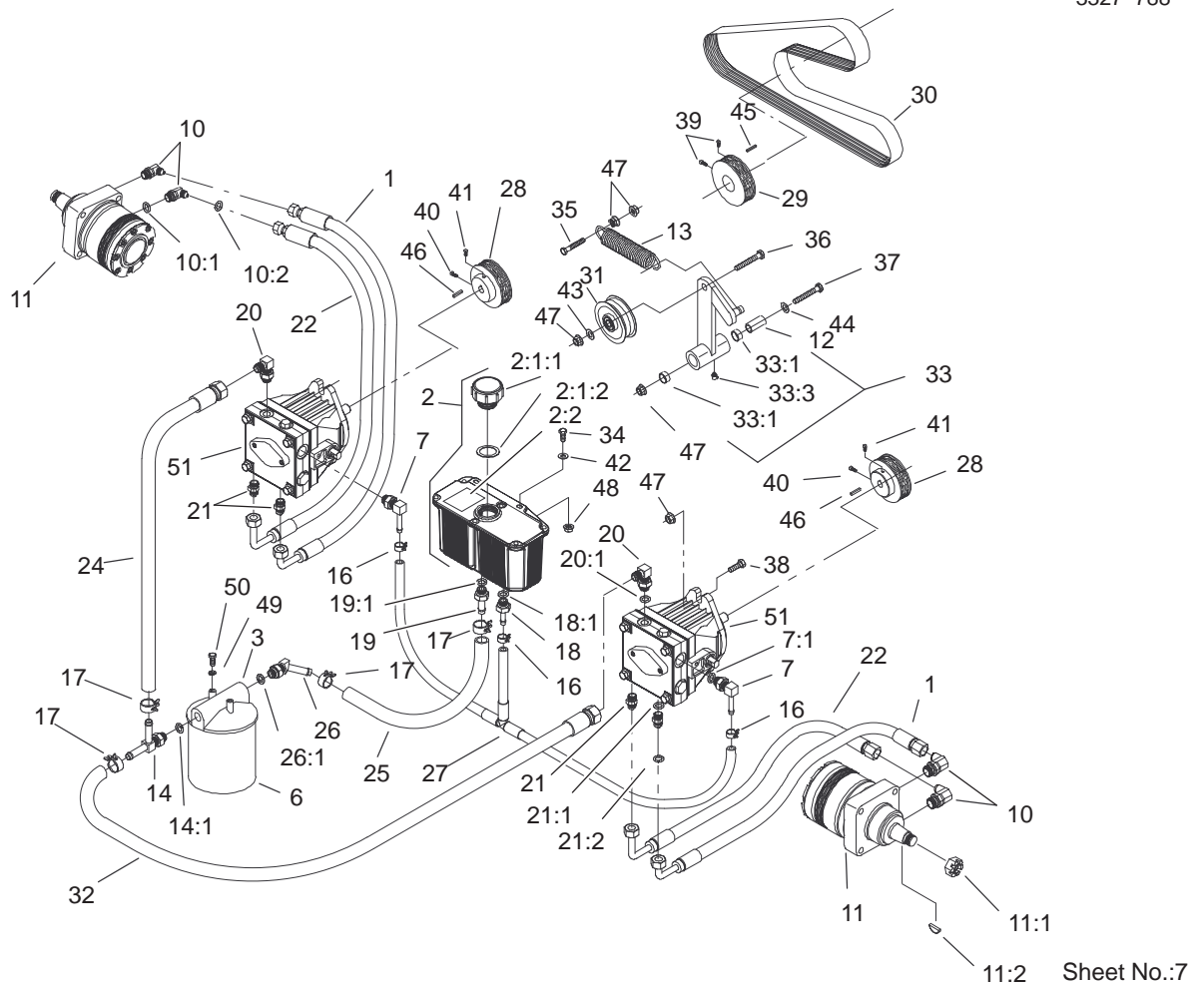


Sheet No.:6

Steering Control Assembly

Ref. No.	Part No.	Qty.	Description
1	1-303105	2	Yoke-Adjustable
2	98-5975	4	Washer-Belleville
3	1-523027	2	Damper-Control
4	1-543017	2	Balljoint-RH
5	1-603735	2	Bushing-Flanged
6	1-603737	2	Bolt-Return, Neutral
7	1-603807	2	Spring-Return, Neutral
8	1-403180	4	Screw-HH
11	103-0632	1	RH Lever ASM
11:1	1-633257	1	Grip-Control, Motion
12	1-632208	2	Arm-Control, Pump
13	1-642319	1	Control-Motion, LH
14	1-642320	1	Control-Motion, RH
15	1-633153	2	Linkage-Pump/Lever
16	1-633102	4	Bearing-Flange, Side
17	1-633152	2	Balljoint-Thread, LH
18	103-0407	2	Arm-Shaft, Control
20	322-6	4	Screw-HH
21	323-4	8	Screw-HH
22	323-6	4	Screw-HH
23	323-9	6	Screw-HH
24	1-803022	2	Screw
25	3296-39	6	Nut-Lock, NI
26	3219-2	10	Nut-Hex
27	1-804524	2	Nut

Ref. No.	Part No.	Qty.	Description
28	3220-2	2	Nut
29	3256-2	2	Washer-Flat
30	3256-3	4	Washer-Flat
32	3272-5	2	Pin-Cotter
33	1-808280	2	Pin-Clevis
34	32128-20	16	Nut-HF
35	3290-357	8	Nut-HHF
37	103-0631	1	LH Lever ASM
37:1	1-633257	1	Grip-Control, Motion



11:2 Sheet No.:7

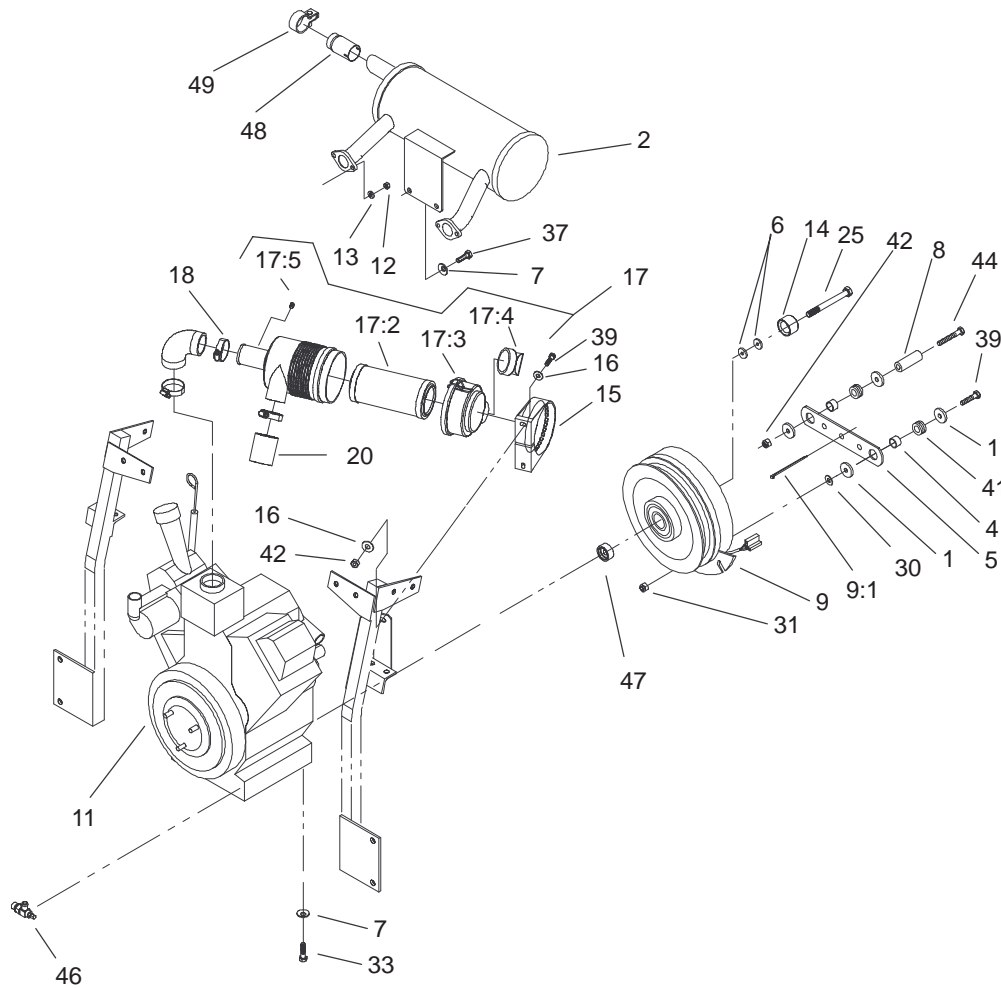
Hydraulic System Assembly

Ref. No.	Part No.	Qty.	Description
1	1-633776	2	Hose-Upper
2	103-1947	1	HYD Reservoir ASM
☆2:1		1	Reservoir-HYD
2:1:1	103-1948	1	Cap-HYD Reservoir
2:1:2	103-1949	1	Gasket-Cap
2:2	1-523552	1	Decal-Tank, Hydraulic
3	104-7836	1	Head-Filter
6	1-633750	1	Filter-HYD
6	1-633752	1	Filter-HYD, Winter
7	103-1799	2	Elbow-90°
7:1	237-42	1	O-Ring
10	1-633786	4	Fitting-90°
10:1	237-80	1	O-Ring
10:2	1-603992	1	O-Ring
11	1-523328	2	Motor-Wheel
11:1	1-809036	1	Nut-HH
11:2	3257-42	1	Key-Woodruff
*11:99	103-2748	1	Kit-Link, Drive
*11:99	1-000139	1	Kit-Bearing
*11:99	1-000099	1	Kit-Seal
12	1-603384	1	Bushing-Pivot, Idler
13	1-633151	1	Spring-Extension
14	103-1828	1	Adapter-Run, Tee
14:1	237-42	1	O-Ring
16	103-1716	3	Clamp-Hose
17	103-1988	4	Clamp-Hose

Ref. No.	Part No.	Qty.	Description
18	103-1801	1	Adapter-Straight
18:1	237-42	1	O-Ring
19	103-1912	1	Adapter-Straight
19:1	237-42	1	O-Ring
20	103-1802	2	Elbow-90°
20:1	237-42	1	O-Ring
21	1-603990	4	Fitting-Straight
21:1	237-79	1	O-Ring
21:2	1-603992	1	O-Ring
22	103-1863	2	Hose-Lower
24	103-1826	1	HYD Hose ASM
25	103-1808	1	Hose-HYD
26	103-1807	1	Elbow-45°
26:1	237-42	1	O-Ring
27	103-1806	1	HYD Hose ASM
28	1-633568	2	Sheave
29	1-633567	1	Sheave
30	1-633749	1	Belt-Drive, Pump
31	1-633167	1	Shaft-Idle
32	103-1827	1	HYD Hose ASM
33	1-634277	1	Bearing Arm ASM
33:1	1-513034	2	Sleeve-Bearing
33:3	302-40	1	Fitting-Grease
34	321-6	2	Screw-HH
35	323-8	1	Screw-HH
36	323-9	1	Screw-HH

☆ Not serviced separately

* Not illustrated



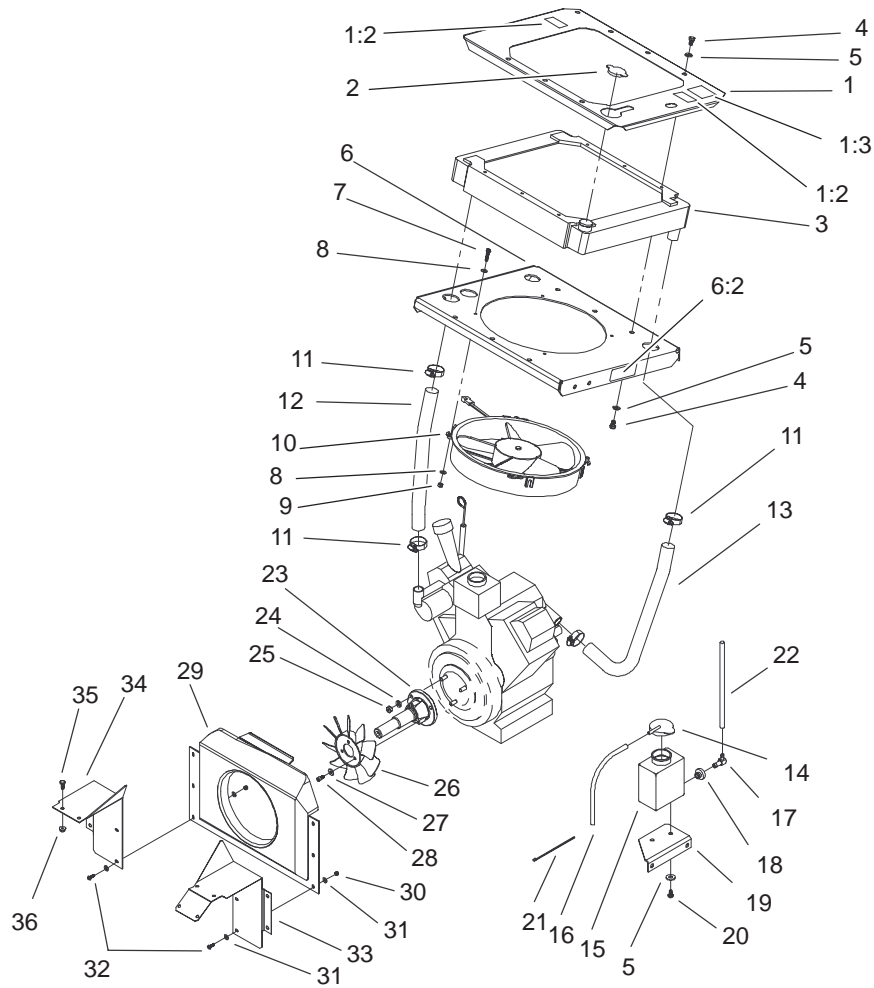
Sheet No.:14

Engine Assembly

Ref. No.	Part No.	Qty.	Description
1	1-613235	4	Washer
2	103-0059	1	Muffler
4	1-633545	2	Spacer-Grommet
5	1-633543-03	1	Strap-Clutch, Brake
6	1-603610	2	Washer-Spring
7	1-303334	6	Washer-Spring
8	1-643008	1	Spacer-Anchor, Clutch
9	103-1364	1	Clutch
9:1	1-303335	1	Tie-Plastic
☆11		1	Engine-Kawasaki, Fd750d-As03
12	33013-00	4	Nut-Hex
13	1-805004	4	Washer-Lock
14	103-0152	1	Keeper, Clutch
15	95-5806	1	Bracket-Mounting
16	3256-3	4	Washer-Flat
17	95-5805	1	Air Cleaner ASM
17:2	93-2195	1	Filter
17:3	94-3652	1	Cover ASM
17:4	94-1414	1	Valve-Vacuator
17:5	285-17	1	Plug-Pipe
18	1-643009	2	Clamp-Hose
20	1-643084	1	Hose-Inlet, Air
25	48-7570	1	Screw - HH
30	3256-3	1	Washer-Flat

Ref. No.	Part No.	Qty.	Description
31	32128-20	1	Nut-HF
33	33115-025	4	Screw-HH
37	33115-020	2	Screw-HH
39	322-6	3	Screw-HH
41	1-633630	2	Grommet-Brake
42	3296-29	3	Nut-Lock, NI
44	322-38	1	Screw-HH
46	103-0161	1	Valve, Oil Drain
47	103-0114	1	Spacer-Clutch
48	103-1511	1	Arrestor-Spark
49	103-1512	1	Clamp-Muffler

☆ Not serviced separately

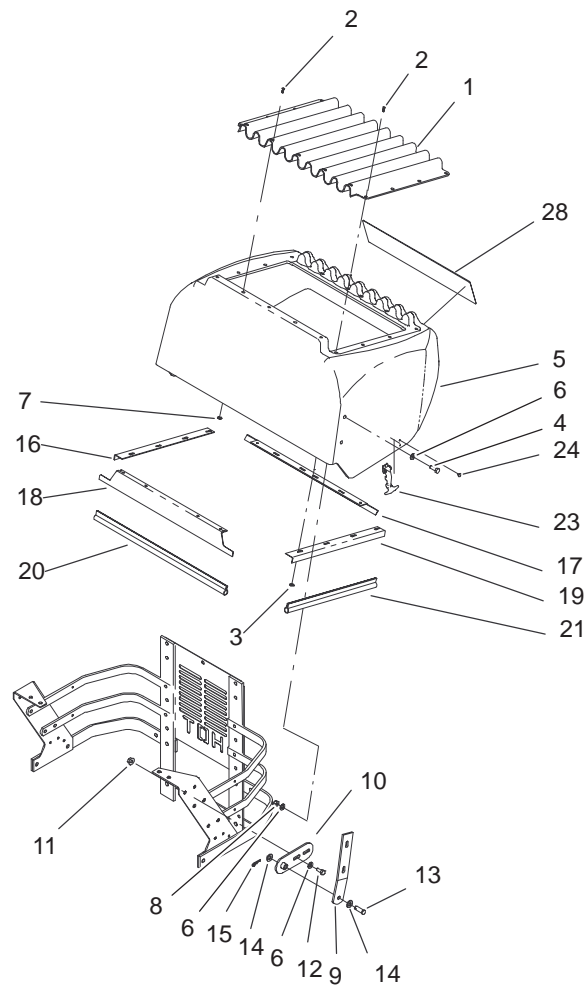


Sheet No.:15

Engine Assembly (Continued)

Ref. No.	Part No.	Qty.	Description
1	104-7843	1	Radiator Trim Plate ASM
1:2	65-2690	2	Decal-Surface, Hot
1:3	104-2449	1	Decal-Coolant, Havoline
2	1-643161	1	Cap-Radiator
3	103-1046	1	Radiator, Horiz Mount
4	322-1	12	Screw-HH
5	3256-23	14	Washer-Flat
6	100-4301	1	Fan Mounting Plate ASM
6:2	1-643253	2	Decal-Fan, Radiator
7	1-803067	4	Screw
8	3256-16	8	Washer-Flat
9	1-804254	4	Nut
10	1-633831	1	Fan
11	1-633989	4	Clamp-Hose
12	103-0074	1	Hose, Radiator Inlet
13	103-0075	1	Hose, Radiator Outlet
14	1-643164	1	Cap-Tank, Overflow
15	1-643163	1	Tank-Overflow
16	1-643131	1	Hose
17	1-643259	1	Fitting-Elbow
18	1-513645	1	Bushing-Valve, Fuel
19	103-2603-03	1	Bracket-Bottle
20	321-2	2	Screw-HH

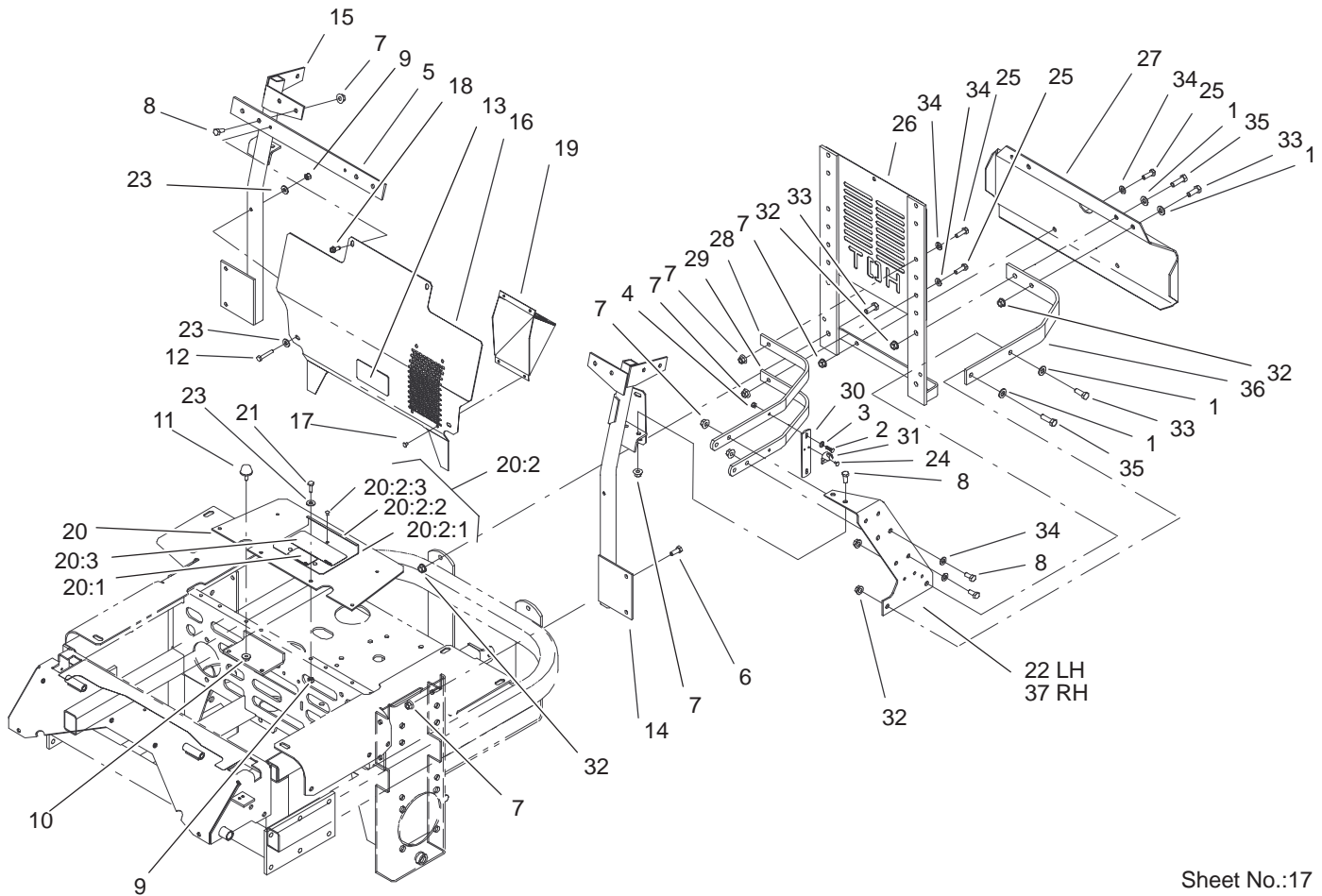
Ref. No.	Part No.	Qty.	Description
21	1-303287	3	Tie-Plastic
22	1-643129	1	Hose
23	1-633851	1	Extension-Crankshaft
24	1-805005	3	Washer-Lock
25	33014-00	3	Nut-Hex
26	1-633869	1	Fan-Pump, Cooling
27	3256-22	3	Washer-Flat
28	1-809095	3	Screw-HSH
29	103-0098	1	Shroud, Hydraulic Fan
30	3296-2	6	Nut-Lock
31	3256-14	12	Washer-Flat
32	3290-500	6	Screw-PPH
33	103-0895-03	1	Shield-LH
34	1-633794-03	1	Baffle-Engine Shield, RH
35	321-4	6	Screw-HH
36	32128-33	6	Nut-HF



Sheet No.:16

Hood Assembly

Ref. No.	Part No.	Qty.	Description	Ref. No.	Part No.	Qty.	Description
1	1-633864-03	1	Screen-Radiator				
2	1-803072	17	Rivet-Bulbex				
3	3256-14	12	Washer-Flat				
4	322-4	4	Screw-HH				
5	104-5136	1	Hood				
6	3256-23	10	Washer-Flat				
7	1-303435	5	Washer-Spring				
8	3296-29	4	Nut-Lock, NI				
9	1-633885-03	2	Plate-Hinge, Hood				
10	1-632986-03	2	Shackle-Hinge				
11	32128-20	25	Nut-HF				
12	322-3	16	Screw-HH				
13	1-808285	2	Pin-Clevis				
14	3256-24	6	Washer-Flat				
15	1-806003	2	Pin-Hair				
16	1-643106-03	1	Angle-Radiator, RH				
17	1-643108-03	1	Angle-Radiator, Bottom				
18	1-643107-03	1	Angle-Radiator, Top				
19	1-643105-03	1	Angle-Radiator, LH				
20	1-643187	2	Seal-Trim				
21	1-643186	2	Seal-Trim				
23	1-643188	2	Latch-Rubber				
24	923786	4	Rivet-Pop				
28	99-4621	1	Decal-Z Master Liquid Cooled				



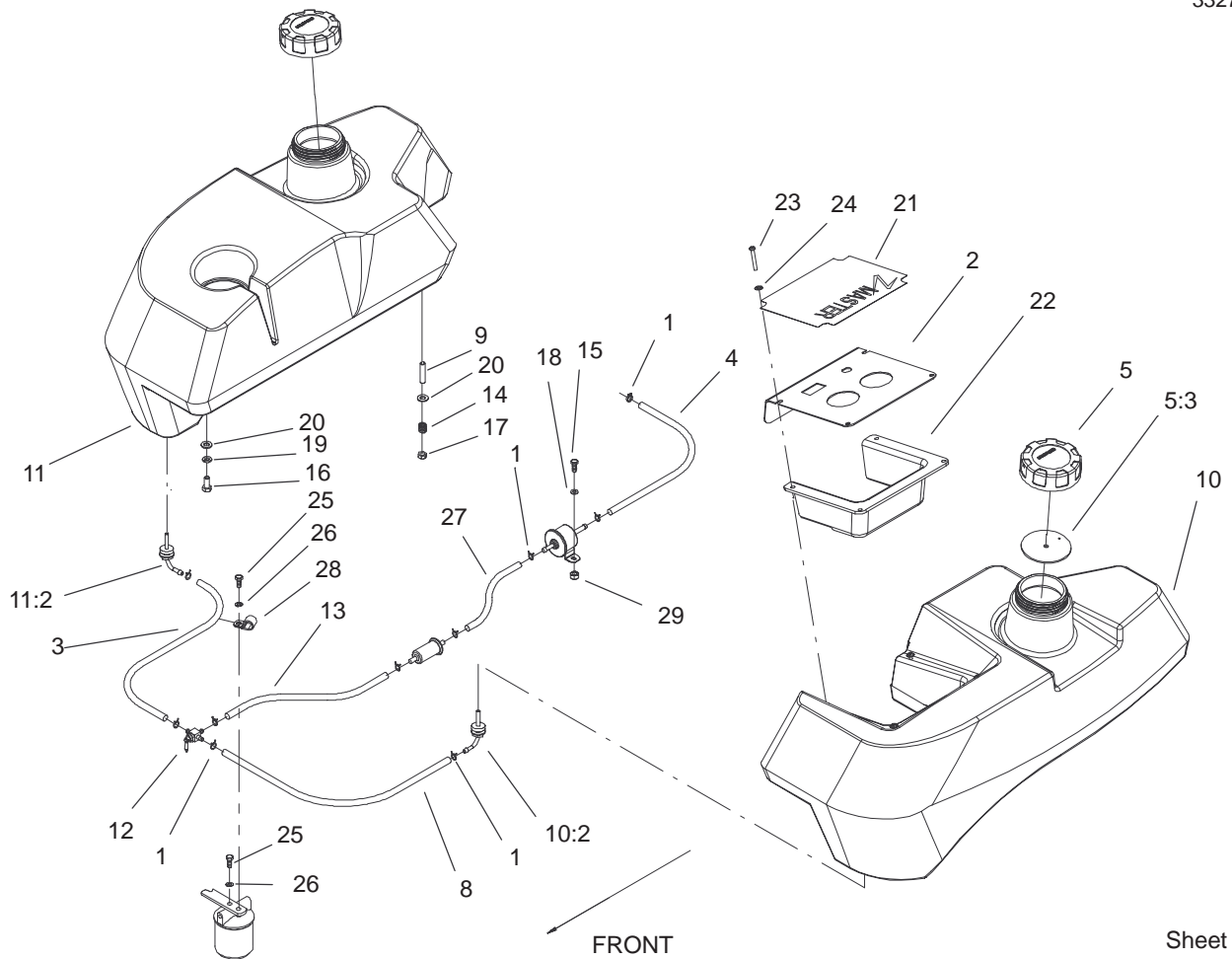
Sheet No.:17

Cooling Mounting Frame Assembly

Ref. No.	Part No.	Qty.	Description
1	3256-24	6	Washer-Flat
2	1-803069	4	Screw
3	3256-14	4	Washer-Flat
4	3296-2	4	Nut-Lock
5	1-633878-03	1	Crossbar
6	322-4	4	Screw-HH
7	32128-20	12	Nut-HF
8	322-3	8	Screw-HH
9	3296-42	6	Nut-Lock, NI
10	32128-33	2	Nut-HF
11	1-523420	2	Bumper
12	321-9	2	Screw-HH
13	1-643339	1	Decal-Routing, Belt
14	103-0107-03	1	Brace-Radiator, LH
15	1-632985-03	1	Brace-Radiator, RH
16	1-643087-03	1	Deflector-Air
17	3269-3	4	Rivet-Pop
18	49-2040	2	Screw-Tapping
19	103-0110-03	1	Plenum-Intake, Air
★19:1:10		1	
			Removed Items And Obsoleted Ajp 10-26-20
20	1-644276	1	Shield ASM
20:1	1-633462	1	Decal-Important

Ref. No.	Part No.	Qty.	Description
20:2	1-634308	1	Shield/Lift ASM
20:2:1	103-1308	1	Shield-Engine
20:2:2	1-633300-03	1	Lift-Shield
20:2:3	1-803035	3	Rivet-Pop
20:3	103-0368	1	Decal-Devices, Rotating
21	321-4	4	Screw-HH
22	103-0896-03	1	Plate-Side, LH
23	3256-2	6	Washer-Flat
24	923786	4	Rivet-Pop
25	322-5	9	Screw-HH
26	1-632873-03	1	Mount-Radiator, Rear
27	1-633886-03	1	Guard-Bumper
28	1-633897-03	2	Rib-Top
29	1-633898-03	2	Rib-Bottom
30	1-633877-03	2	Bar-Latch Hook
31	1-643189	2	Keeper-Rubber Latch
32	3290-357	10	Nut-HHF
33	323-6	6	Screw-HH
34	3256-23	11	Washer-Flat
35	323-7	4	Screw-HH
36	1-633896-03	2	Bar-Radiator Mount Frame
37	103-0897-03	1	Plate-Side, RH

★ Not serviced separately

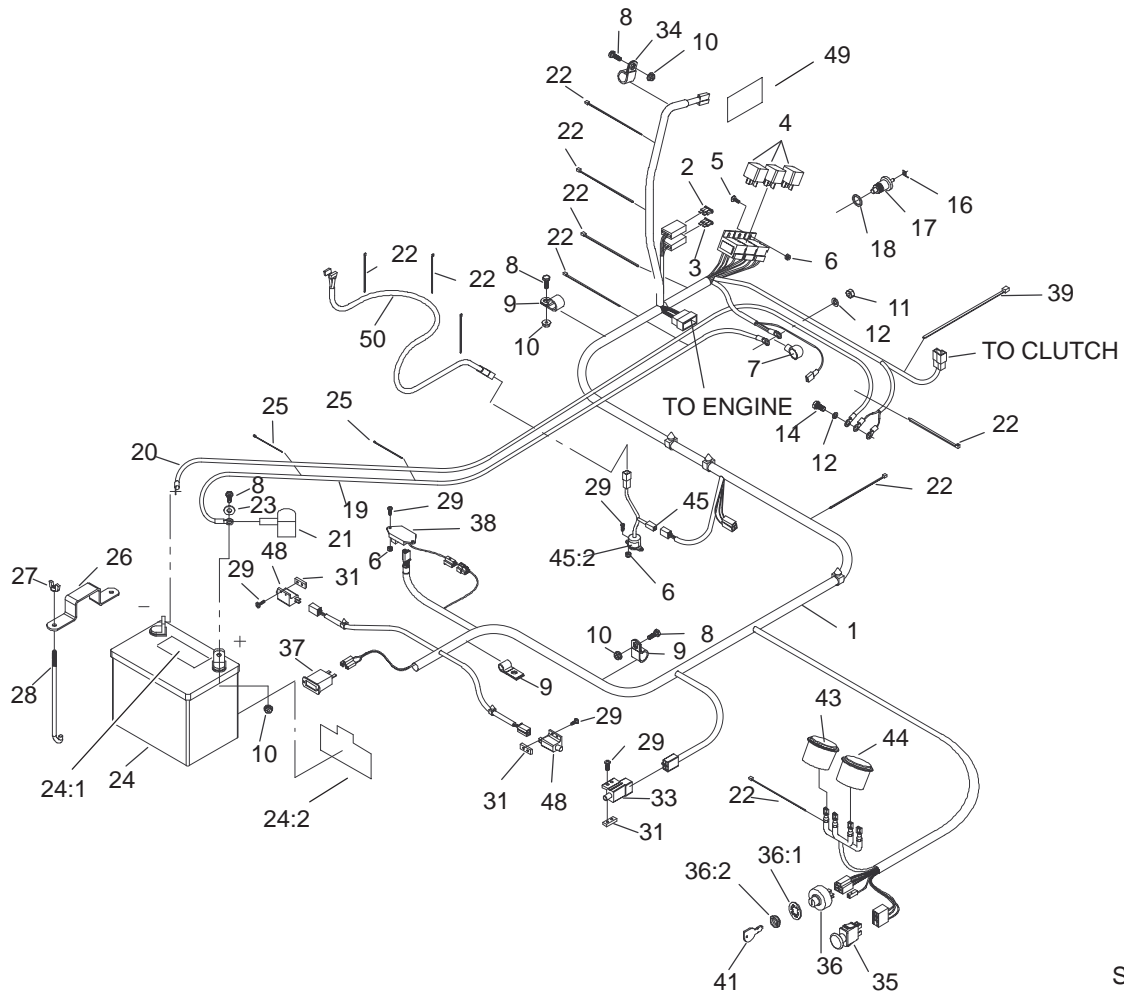


Sheet No.:24

Tank and Fuel Line Assembly

Ref. No.	Part No.	Qty.	Description
1	1-303077	10	Clamp-Line, Fuel
2	99-4617-03	1	Panel-Control
3	103-2885	1	Hose-Fuel
4	103-1335	1	Hose-Fuel
5	88-3980	2	Gas Cap ASM
5:3	88-4010	1	Gasket-Cap, Gas
8	1-543456	1	Hose-Fuel
9	1-633023	6	Stud
10	105-3629	1	LH Fuel Tank ASM
10:2	103-2605	1	Fitting-Fuel, Bulkhead
11	105-3628	1	RH Fuel Tank ASM
11:2	103-2605	1	Fitting-Fuel, Bulkhead
12	1-633347	1	Valve-Fuel
13	1-303426	1	Hose-Fuel Line
14	1-633349	6	Spring-Tank, Fuel
15	321-4	2	Screw-HH
16	322-3	2	Screw-HH
17	3296-47	6	Nut-Lock, NI
18	3256-2	2	Washer-Flat
19	1-805005	2	Washer-Lock
20	3256-23	8	Washer-Flat
21	99-4612	1	Decal-Control Panel
22	99-4940	1	Shield-Panel, Control
23	1-803071	4	Screw
24	1-303435	4	Washer-Spring
25	321-3	2	Screw-HH

Ref. No.	Part No.	Qty.	Description
26	1-805004	2	Washer-Lock
27	1-643270	1	Hose-Fuel
28	1-513762	1	Clip-Loom
29	32128-33	2	Nut-HF

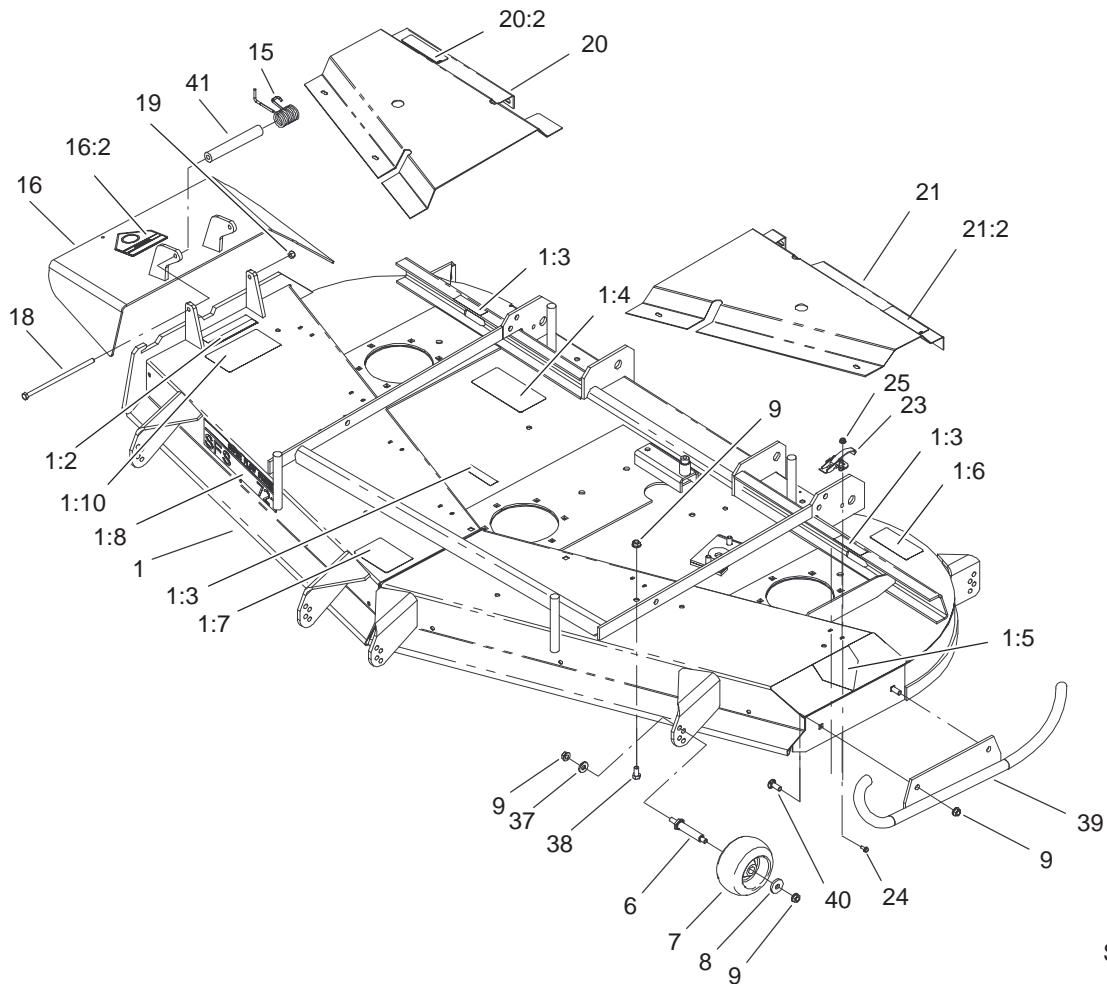


Sheet No.:29

Electrical System Assembly

Ref. No.	Part No.	Qty.	Description
1	104-7757	1	Harness – Wire
2	1-816001	1	Fuse–Type, Blade
3	1-816003	1	Fuse–Blade Type, 30 Amp
4	1-643275	3	Relay
5	1-803071	2	Screw
6	3296-2	6	Nut–Lock
7	1-543393	1	Insulator–Solenoid
8	321-4	5	Screw–HH
9	1-633396	3	Clip–Loom
10	32128-33	5	Nut–HF
11	33014-00	1	Nut–Hex
12	3256-23	2	Washer–Flat
14	33114-016	1	Screw–HH
16	1-643145	1	Tab
17	103-0283	1	Sender–Temperature
18	1-643153	1	Washer–Aluminum
19	1-523279	1	Wire–Battery, Positive
20	1-633307	1	Wire–Ground
21	1-543391	1	Insulator–Battery
22	1-303335	10	Tie–Plastic
23	3256-2	2	Washer–Flat
24	105-1692	1	Battery
24:1	104-4163	1	Decal–Battery
24:2	104-4164	1	Decal–Battery
25	1-303287	2	Tie–Plastic

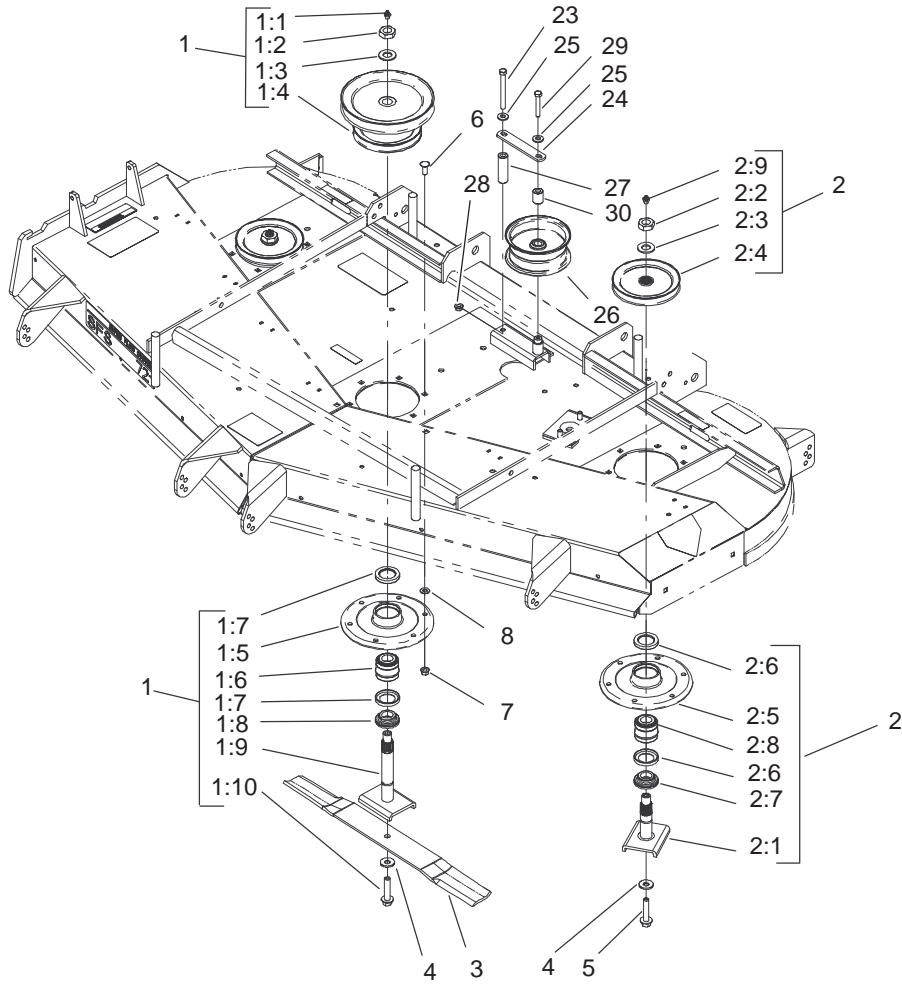
Ref. No.	Part No.	Qty.	Description
26	1-633652-03	1	Strap–Holddown, Battery
27	1-543792	2	Wingnut
28	1-633651	2	Bolt–Holddown
29	3290-500	10	Screw–PPH
31	1-633181	3	Plate–Tapped
33	1-633111	1	Switch
34	1-513762	1	Clip–Loom
35	1-633673	1	Switch–Delta
36	88-9830	1	Key Switch ASM
36:1	3254-5	1	Washer–Lock, Internal
36:2	218-461	1	Nut–HH
37	1-513374	1	Meter–Hour
38	100-6186	1	Module–Delay, Seat
39	1-643115	1	Tie–Plastic
41	63-8360	2	Key–Ignition
43	1-643037	1	Gauge–Voltmeter
44	1-643021	1	Gauge–Temperature
45	1-644427	1	Tilt Switch ASM
45:2	1-643401	1	Decal–Switch, Mercury
48	1-513051	2	Switch–Open, Normally
49	103-1027	1	Decal–Relay
50	103-1227	1	Harness, Wiring Seat



Sheet No.:71

Deck, Deflector and Roller Assembly

Ref. No.	Part No.	Qty.	Description	Ref. No.	Part No.	Qty.	Description
1	105-1698	1	Deck ASM	23	249-21	4	Clamp-Slotted
1:2	104-8569	1	Decal-Warning, Deflector	24	3290-321	8	Screw-HWH
1:3	98-5954	3	Decal-Missing, Cover	25	32128-17	8	Nut-Lock, Flange
1:4	99-4686	1	Decal-Routing, Belt	37	98-5975	6	Washer-Belleville
1:5	43-8480	1	Decal-Danger	38	323-2	6	Screw-HH
1:6	93-7818	1	Decal-Torque, Blade Bolt	39	98-7923-01	1	Skid
1:7	98-3798	1	Decal-Wheel, Gage	40	3231-21	2	Screw-CARR
1:8	98-5995	1	Decal-Deck	41	105-4622	1	Spacer-Mounting, Deflector
1:10	66-1340	1	Decal-Danger				
6	99-2842	6	Spacer-Wheel				
7	68-2730	6	Wheel-Gage				
8	1-373034	6	Washer-Swivel				
9	3290-357	18	Nut-HHF				
15	104-8554	1	Spring-Torsion				
16	105-3605	1	Deflector ASM				
16:2	54-9220	1	Decal-Danger				
18	322-50	1	Screw-Cap				
19	3296-29	1	Nut-Lock, NI				
20	100-6527	1	RH Cover W/Decal ASM				
20:2	67-5360	1	Decal-Danger				
21	99-2623	1	LH Cover W/Decal ASM				
21:2	67-5360	1	Decal-Danger				



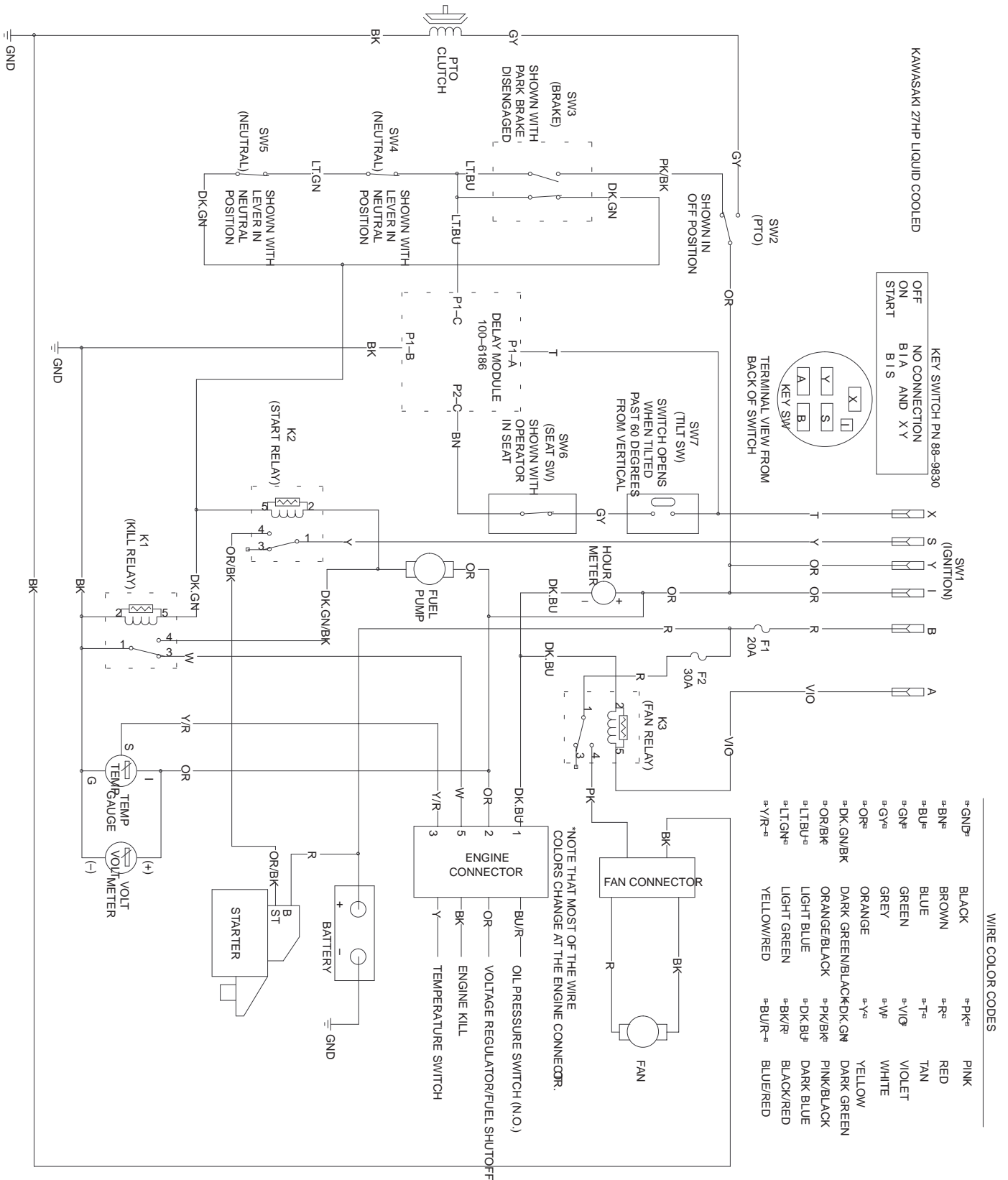
Sheet No.:72

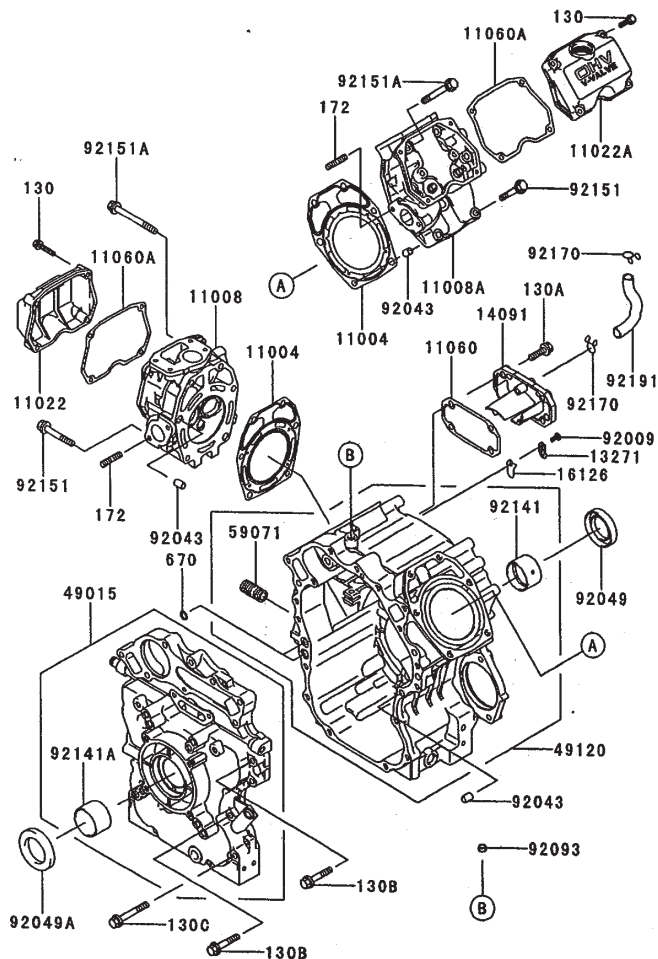
Spindle and Pulley Assembly

Ref. No.	Part No.	Qty.	Description
1	105-1691	1	Spindle Housing ASM
1:1	302-2	1	Fitting-Grease
1:2	32146-20	1	Nut-Jam
1:3	92-5836	1	Washer-Axle
1:4	100-4309	1	Hub Pulley ASM
1:5	61-4160	1	Housing-Spindle
1:6	46-8530	1	Bearing ASM
1:7	253-139	2	Seal-Oil
1:8	27-0950	1	Spacer-Bearing, Spindle
1:9	105-1686	1	Spindle Shaft ASM
1:10	92-5816	1	Bolt-Blade
2	99-4642	2	Outer Spindle ASM
2:1	27-0920	1	Shaft-Spindle
2:2	32146-20	1	Nut-Jam
2:3	7-4150	1	Washer-Pinion
2:4	99-4615	1	Pulley & Hub
2:5	61-4160	1	Housing-Spindle
2:6	253-139	2	Seal-Oil
2:7	27-0950	1	Spacer-Bearing, Spindle
2:8	46-8530	1	Bearing ASM
2:9	302-2	1	Fitting-Grease
3	94-1861	3	Blade
4	1-513435	3	Washer-Spring
5	92-5816	2	Bolt-Blade

Ref. No.	Part No.	Qty.	Description
6	3231-22	18	Screw-CARR
7	32128-21	18	Nut-HF
8	3256-24	4	Washer-Flat
23	323-42	1	Screw-HH
24	1-653189	1	Plate-Guide, Belt
25	98-5975	2	Washer-Belleville
26	1-413099	1	Pulley-Idler
27	99-4659	1	Spacer-Bracket
28	3290-357	1	Nut-HHF
29	323-11	1	Screw-HH
30	1-653190	1	Spacer

Electrical Schematic



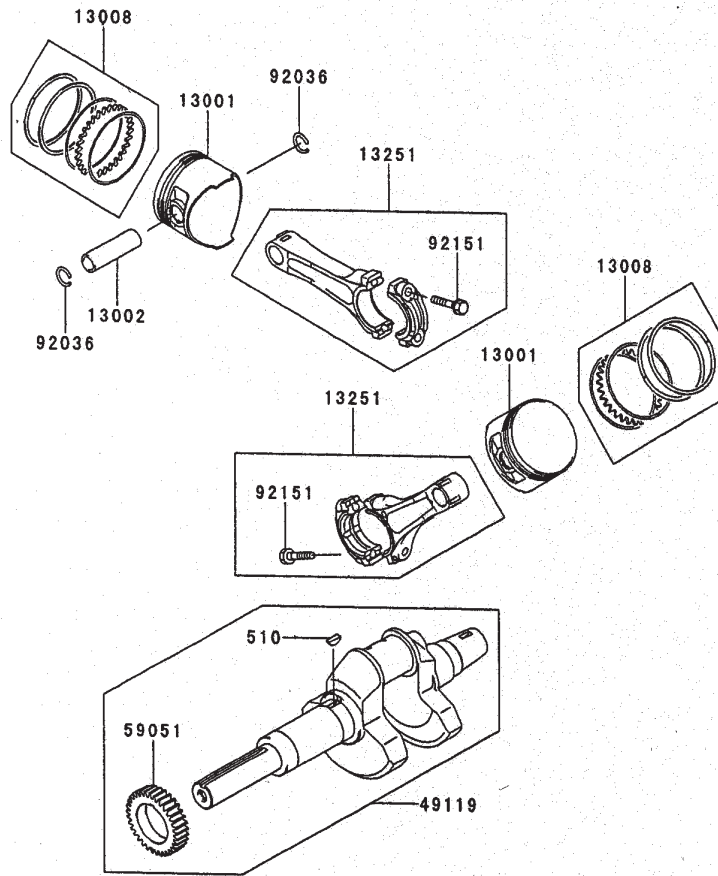


Cylinder/Crankcase (Kawasaki FD750D-AS03)

Ref. No.	Part No.	Qty.	Description
11004	11004-2142	2	Gasket-Head
11008	11008-2145	1	Head-Comp-Cylinder
11008A	11008-2146	1	Head-Comp-Cylinder
11022	11022-2072	1	Case-Rocker
11022A	11022-2073	1	Case-Rocker
11060	11060-2466	1	Gasket, Breath
11060A	11060-2470	2	Gasket, Rocker, Case
13271	13271-2105	2	Plate
14091	14091-2064	1	Cover, Breath
16126	16126-2225	2	Valve, Breath
49015	49015-6232	1	Cover-Crankcase
49120	49120-6127	1	Crankcase-Comp
59071	59071-2079	1	Joint
92009	92009-2308	2	Screw
92043	92043-1037	6	Pin
92049	92049-2242	1	Seal-Oil
92049A	92049-2243	1	Seal-Oil
92093	92093-2086	1	Seal
92141	92141-2118	1	Bearing-Plane
92141A	92141-2119	1	Bearing-Plane
92151	92151-2158	4	Bolt
92151A	92151-2159	8	Bolt
92170	92170-2002	2	Clamp
92191	92191-2105	1	Tube
130	130G0630	8	Bolt-Flanged
130A	130G0830	4	Bolt-Flanged

Ref. No.	Part No.	Qty.	Description
130B	130G0845	4	Bolt-Flanged
130C	310G0860	4	Bolt-Flanged
172	172G0822	4	Bolt-Stud
670	670B2011	2	O-Ring

Obtain Parts From Kawasaki

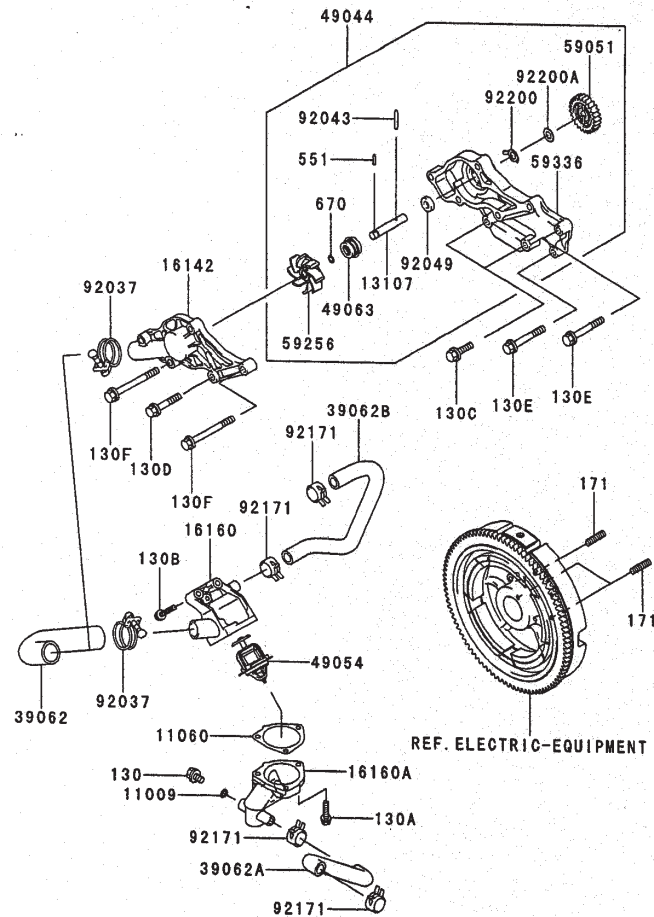


Piston/Crankshaft (Kawasaki FD750D-AS03)

Ref. No.	Part No.	Qty.	Description
13001	13001-2125	2	Piston-Engine
13002	13002-2069	2	Pin-Piston
13008	13008-6007	2	Ring-Set-Piston
13251	13251-2058	2	Rod ASM-Connecting
49119	49119-2198	1	Crankshaft ASM
59051	59051-2358	1	Gear-Spur, 33T
92036	92036-008	4	Ring-Snap
92151	92151-2150	4	Bolt
510	510A5100	1	Key-Woodruff

Ref. No.	Part No.	Qty.	Description

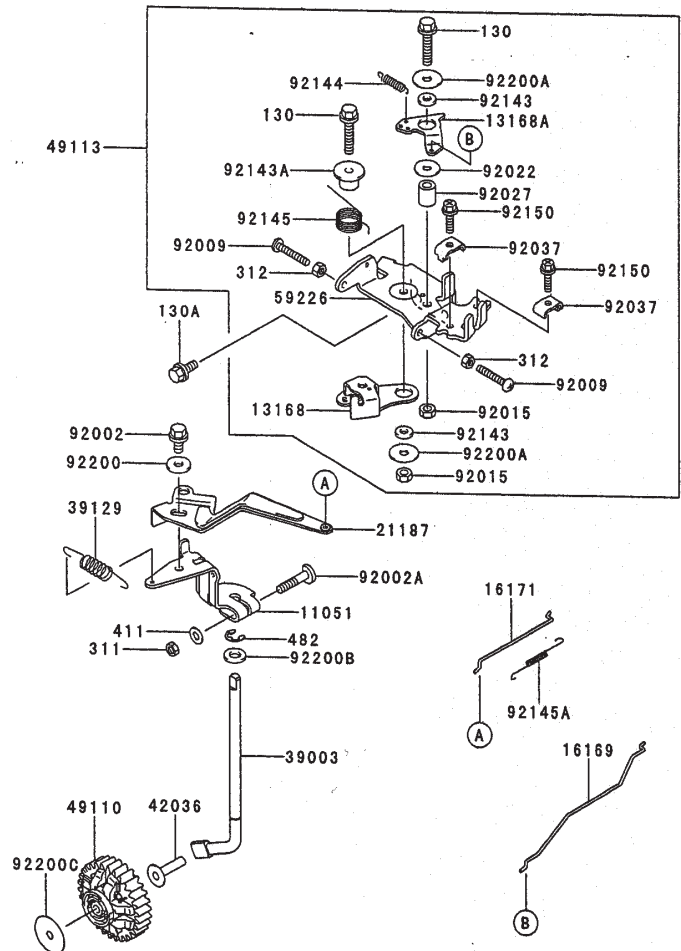
Obtain Parts From Kawasaki



Cooling Equipment (Kawasaki FD750D-AS03)

Ref. No.	Part No.	Qty.	Description	Ref. No.	Part No.	Qty.	Description
11009	11009-3028	1	Gasket	130E	130G0860	2	Bolt-Flanged
11060	11060-2475	1	Gasket-Thermostat	130F	130G0880	4	Bolt-Flanged
13107	13107-2097	1	Shaft-Impeller	171	171G0818	3	Bolt-Stud
16142	16142-2077	1	Cover-Pump	551	551A0314	1	Pin-Dowel
16160	16160-2127	1	Body-Upper	670	670B1507	1	O-Ring
16160A	16160-6002	1	Body-Valve				
39062	39062-2080	1	Hose-Cooling				
39062A	39062-2083	1	Hose-Cooling				
39062B	39062-2084	1	Hose-Cooling				
49044	49044-2063	1	Pump-Water				
49054	49054-2058	1	Thermostat				
49063	49063-1054	1	Seal-Mechanical				
59051	59051-2355	1	Gear-Spur, 25T				
59256	59256-2069	1	Impeller				
59336	59336-2078	1	Case-Pump				
92037	92170-1284	2	Clamp				
92043	92043-2237	1	Pin				
92049	92049-2111	1	Seal-Oil				
92171	92171-2056	4	Clamp				
92200	92200-2134	1	Washer				
92200A	92200-2135	1	Washer				
130	130C0812	1	Bolt-Flanged				
130A	130G0625	3	Bolt-Flanged				
130B	130G0635	2	Bolt-Flanged				
130C	130G0830	2	Bolt-Flanged				
130D	130G0845	1	Bolt-Flanged				

Obtain Parts From Kawasaki



Control Equipment (Kawasaki FD750D-AS03)

Ref. No.	Part No.	Qty.	Description
11051	11051-2113	1	Bracket
13168	13168-2466	1	Lever-Throttle
13168A	13168-2467	1	Lever-Choke
16169	16169-2142	1	Link-Choke
16171	16171-2091	1	Link
21187	21187-2073	1	Arm ASM
39003	39003-2091	1	Arm-Pivot
39129	39129-2099	1	Spring-Governor
42036	42036-2060	1	Sleeve
49110	49110-2094	1	Governor ASM
49113	49113-2170	1	Panel-Comp-Control
59226	59226-2328	1	Panel-Control
92002	92002-1902	1	Bolt
92002A	92002-2269	1	Bolt
92009	92009-2381	2	Screw
92015	92015-2051	2	Nut
92022	92002-2372	1	Washer
92027	92027-1461	1	Collar
92037	92037-2209	2	Clamp
92143	92143-2135	2	Collar
92143A	92143-2148	1	Collar
92144	92144-2052	1	Spring
92145	92145-2058	1	Spring
92145A	92145-2095	1	Spring
92150	92150-2182	2	Bolt
92200	92200-2035	1	Washer

Ref. No.	Part No.	Qty.	Description
92200A	92200-2108	2	Washer
92200B	92200-2120	1	Washer
92200C	92200-2122	1	Washer
130	130B0630	2	Bolt-Flanged
130A	130G0614	2	Bolt-Flanged
311	311B0600	2	Nut-Hex
312	312G0500	2	Nut-Hex
411	411B0600	1	Washer
482	482J7000	1	Circlip-Type E

Obtain Parts From Kawasaki

