



EFI Fuel Line Conversion Kit

200 Series Z Master with Electronic Fuel Injection

Part No. 105-9385

Form No. 3327-793

Installation Instructions

Loose Parts

Note: Use the chart below to identify parts for assembly.

DESCRIPTION	QTY.	USE
Connector, 1/4 x 5/16 in.	1	Installing the connector
Fuel hose extension	1	
Hose clamp—Oetiker®	3	

Important Installation of hose clamps require special pliers. Contact an Authorized Kohler® Service Dealer or tool suppliers for ordering Oetiker pliers.

Removing the Existing Fuel Filter



Warning



Gasoline is harmful or fatal if swallowed. Long-term exposure to vapors can cause serious injury and illness.

- Avoid prolonged breathing of vapors.
- Keep face away from nozzle and gas tank or conditioner bottle opening.
- Keep gas away from eyes and skin.



Danger



In certain conditions, gasoline is extremely flammable and highly explosive. A fire or explosion from gasoline can burn you and others and can damage property.

- Wipe up any gasoline that spills. Do this procedure outdoors in an open area.
- Never smoke when draining gasoline, and stay away from an open flame or where a spark may ignite the gasoline fumes.

1. Park the machine on a level surface. Then disengage the power take off (PTO), set the parking brake, and turn the ignition key to off. Remove the key.
2. Turn the fuel shut-off valve to the **off** position (Fig. 1).

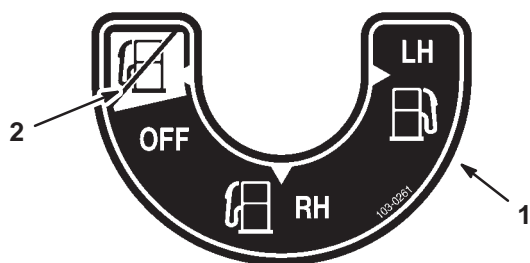
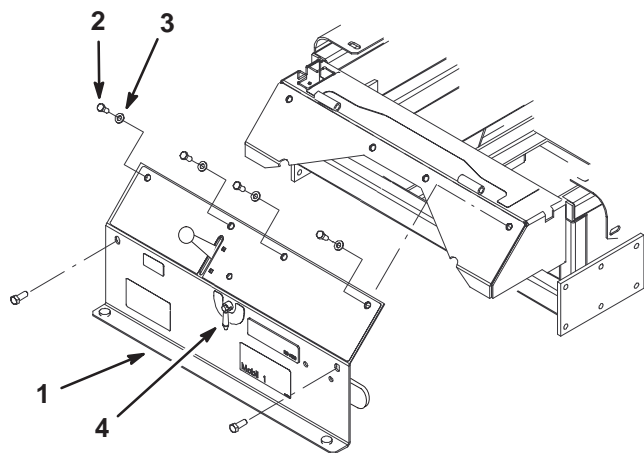


Figure 1

1. Fuel shut-off valve 2. Off position

Note: Make sure the fuel shut-off is turned to the **off** position (Fig. 1).

3. Remove the control panel from the machine (Fig. 2). This will allow access to the fuel shut-off valve and hoses.



m-6097

Figure 2

1. Control panel 3. Washer
2. Screw 4. Shut-off valve

4. Remove the hose clamps from the fuel filter (Fig. 3).
5. Remove the hoses from the fuel filter (Fig. 3). Discard the fuel filter.
6. Remove the fuel filter hose from the fuel shut off valve. Discard this hose and clamps.

Installing the Connector



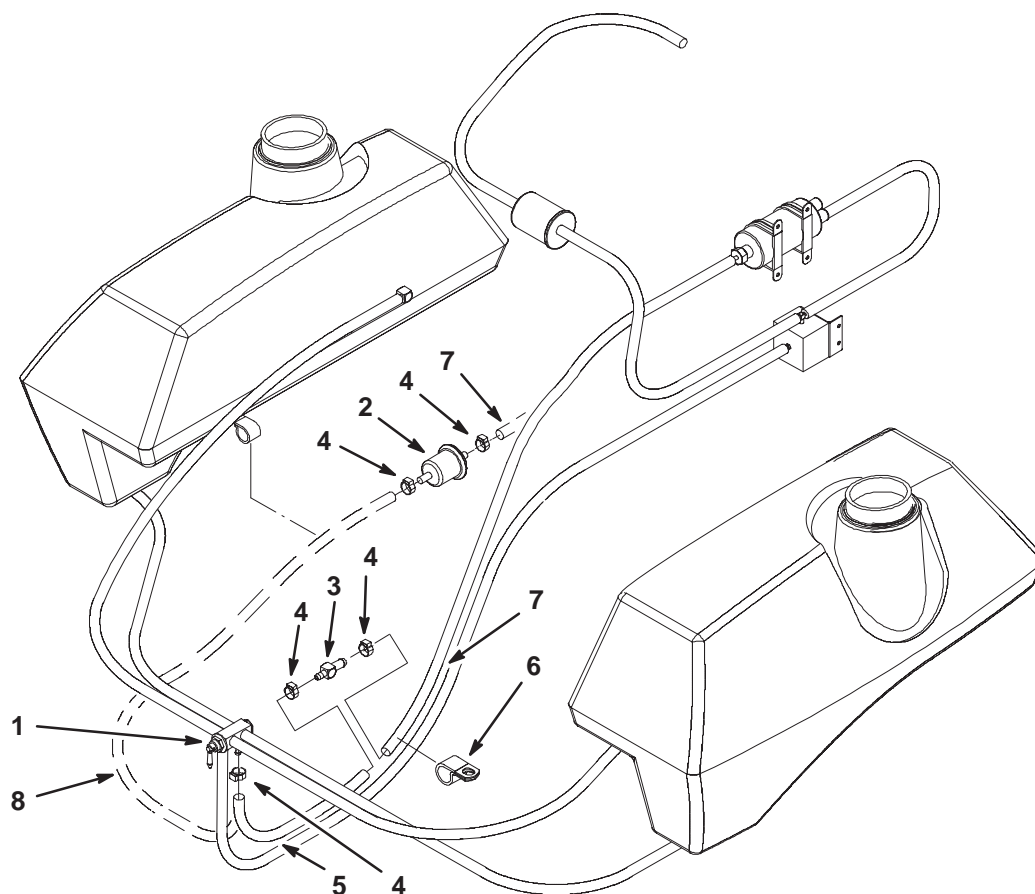
Warning



Fuel system components are under high pressure. Use of improper components can result in system failure, gasoline leakage and possible explosion.

Use only approved fuel lines, hose clamps and fuel filters for high pressure systems.

1. Route the existing hose under the battery and through the existing R-clamp (Fig. 3).
2. Slide a clamp onto the fuel pump hose and insert the connector into the hose (Fig. 3).
3. Slide **two** clamps onto the new fuel hose extension (Fig. 3).
4. Install the connector into the new fuel hose extension (Fig. 3).
5. Install the new fuel hose extension onto the fuel shut-off valve (Fig. 3).
6. Secure all new hose clamps at the fuel shut-off valve and connector (Fig. 3).



m-6042

Figure 3

- | | | | |
|------------------------|----------------------|--------------------------------|----------------------------|
| 1. Fuel shut-off valve | 3. Connector—install | 5. Fuel hose extension—install | 7. Fuel pump hose |
| 2. Fuel filter—remove | 4. Hose clamp | 6. R-clamp | 8. Fuel filter hose—remove |

Checking for Leaks

Important Make sure all hoses and clamps are secured.

- Before installing the control panel, turn the shut-off valve to the right-hand position (right tank) (Fig. 1).
- Turn the ignition switch on and off 5 times. This will run the fuel pump.
- Check for any leaks around the new hose clamps (Fig. 3).
- Repeat this installation kit if any leaks are observed.
- If there are no leaks, start the machine.
- Check for any leaks around the new hose clamps (Fig. 3).
- Turn the shut-off valve to the left-hand position (left tank) (Fig. 1).
- Check for any leaks around the new hose clamps (Fig. 3).
- Repeat this installation kit if any leaks are observed (Fig. 1).
- If no leaks are observed, install the front control panel (Fig. 2).

