



**CE Kit**  
**Multi Pro® 5800-G Turf Sprayer**  
Model No. 144-6200

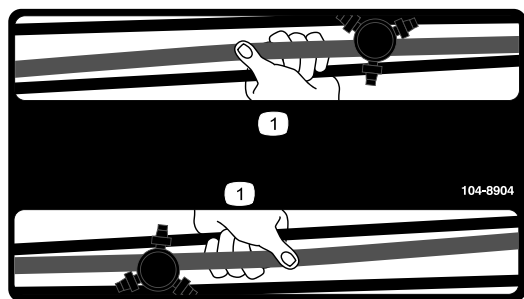
**Installation Instructions**

# Safety

## Safety and Instructional Decals



Safety decals and instructions are easily visible to the operator and are located near any area of potential danger. Replace any decal that is damaged or missing.



decal104-8904

**104-8904**

- 1. Grab boom here



decal119-9434

**119-9434**

- 1. Tank contents



# Installation

## Loose Parts

Use the chart below to verify that all parts have been shipped.

Procedure	Description	Qty.	Use
<b>1</b>	No parts required	–	Prepare the machine.
<b>2</b>	Front fan guard Rear fan guard Carriage bolt (5/16 x 3/4 inch) Flange locknut (5/16 inch) Capscrew (5/16 x 2-3/4 inches) Washer (3/8 x 7/8 inch) Spacer	1 1 4 4 2 2 4	Install the fan guard.
<b>3</b>	Horn switch (switch, jam nut, and knurled nut) Wire harness	1 1	Install the wire harness and horn switch.
<b>4</b>	Horn Capscrew (5/16 x 3/4 inch) Flange locknut (5/16 inch)	1 1 1	Install the horn.
<b>5</b>	Cable ties	6	Install the kit wire harness.
<b>6</b>	PPE storage bag Hoop rod Mount bracket U-bolt Flange locknut (3/8 inch)	1 1 1 1 2	Install the PPE storage bag.
<b>7</b>	Folding boom decal (104-8904) Tank contents-slate decal (119-9434) Regulatory decal	2 1 1	Apply the decals on the booms.

# 1

## Preparing the Machine

### No Parts Required

### Procedure

1. Park the machine on a level surface with enough area to lower the booms.
2. Engage the parking brake.
3. Lower the booms.
4. Shut off the engine and remove the key.
5. Wait for all moving parts to stop.
6. Allow the engine to cool.

# 2

## Installing the Fan Guard

Parts needed for this procedure:

1	Front fan guard
1	Rear fan guard
4	Carriage bolt (5/16 x 3/4 inch)
4	Flange locknut (5/16 inch)
2	Capscrew (5/16 x 2-3/4 inches)
2	Washer (3/8 x 7/8 inch)
4	Spacer

### Removing the Air-Cleaner Hose

1. Rotate both seats forward and secure them with the prop rods.
2. Below the passenger seat area, remove the 2 hose clamps that secure the air-cleaner hose to the vent T-tube and the throttle-body inlet (Figure 1).

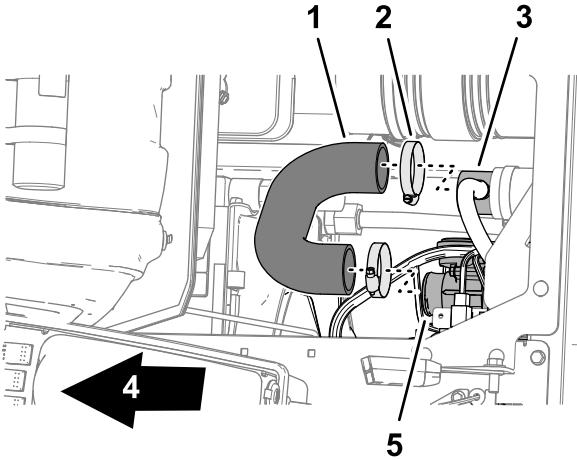


Figure 1

g350303

1. Air-cleaner hose
2. Hose clamp
3. Vent T-tube
4. Front of the machine
5. Throttle-body inlet

3. Remove the air-cleaner hose from the vent tube and throttle body.

### Installing the Forward Fan Guard

1. Remove the 2 capscrews (5/16 x 3/4 inch), 2 lock washers (5/16), and 2 washers (5/16) that secure the upper fan shroud (Figure 2).

**Note:** Discard the capscrews, lock washers, and washers.

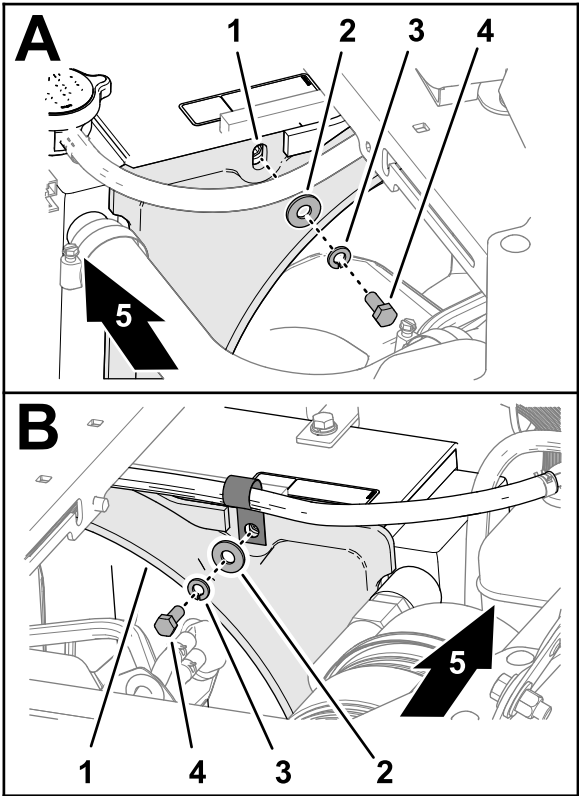


Figure 2

g349196

1. Upper fan shroud
2. Washer (5/16 inch)
3. Lock washer (5/16 inch)
4. Capscrew (5/16 x 3/4 inch)
5. Front of the machine

2. Position the forward fan guard under the center console.

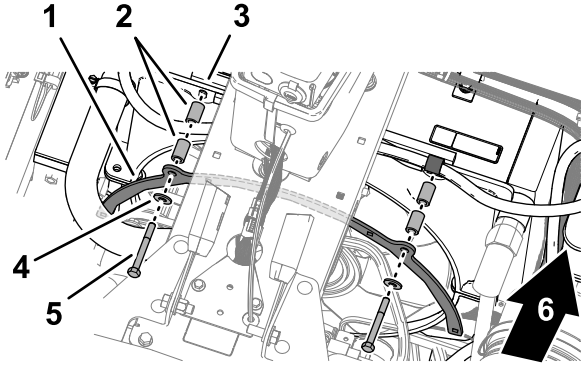


Figure 3

g349195

1. Forward fan guard
2. Spacers
3. Fan shroud
4. Washer (5/16 inch)
5. Capscrew (5/16 x 2-3/4 inches)
6. Front of the machine

3. Align the holes on the forward fan guard with the holes in the fan shroud (Figure 3).

- Install the guard to the shroud (Figure 3) with the 4 spacers, 2 washers (5/16 inch), and 2 capscrews (5/16 x 2-3/4 inches).

## Installing the Rear Fan Guard

- Align and rotate the rear fan guard under the center console as shown in Figure 4.

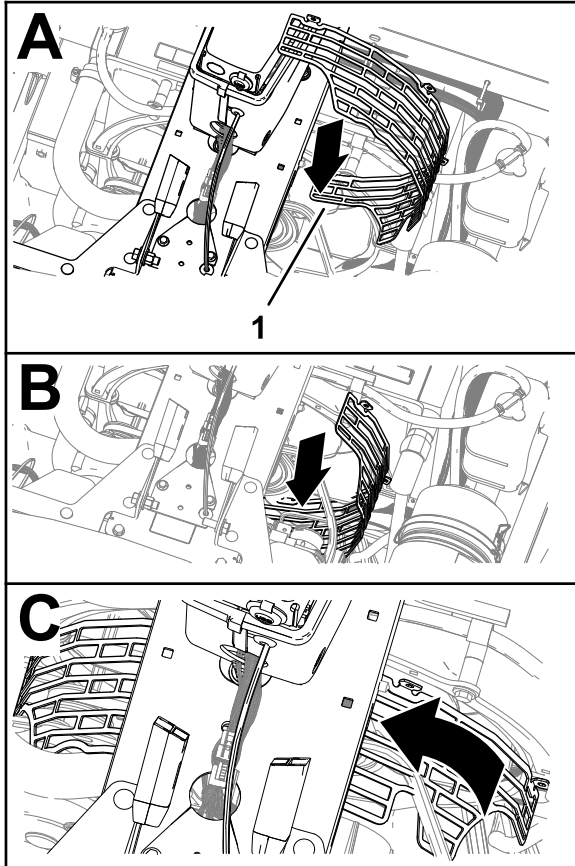
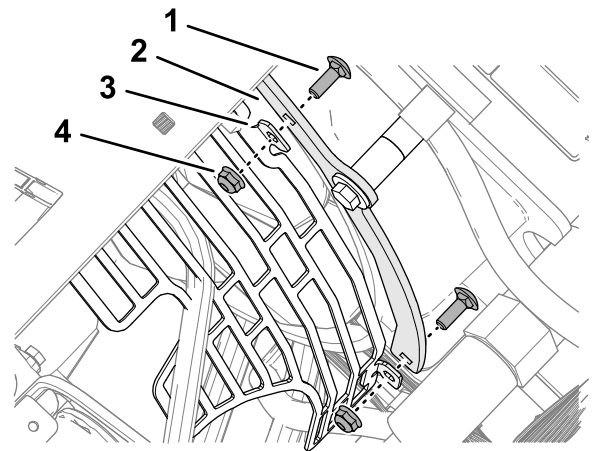


Figure 4

g348976

- Front fan guard
- 
- Assemble the front fan guard to the rear fan guard (Figure 4) with 4 carriage bolts (1/4 x 3/4 inch) and 4 flange locknuts (1/4 inch).



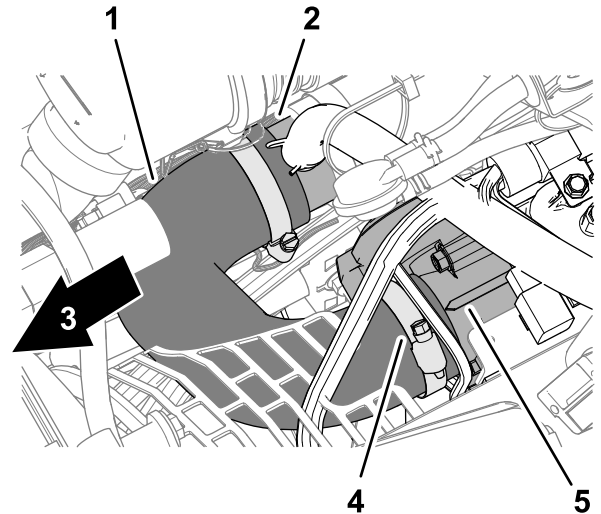
g350319

Figure 5

- Carriage bolt (1/4 x 3/4 inch)
  - Front fan guard
  - Mounting tab (rear fan guard)
  - Flange locknut (1/4 inch)
- 
- Torque the flange locknuts to 1017 to 1242 N·cm (90 to 110 in-lb).

## Installing the Intake Air Duct

- Assemble the air-cleaner hose onto the T-vent tube and the throttle-body inlet (Figure 6).



g350302

Figure 6

- Air-cleaner hose
- Vent T-tube
- Front of the machine
- Hose clamp
- Throttle-body inlet

- Secure the air-cleaner hose to the vent tube and throttle body with the 2 hose clamps (Figure 6) that you removed in [Removing the Air-Cleaner Hose](#) (page 3).

# 3

## Installing the Horn Switch

### Parts needed for this procedure:

1	Horn switch (switch, jam nut, and knurled nut)
1	Wire harness

### Procedure

1. Remove the knock-out plug from the dash panel (Figure 7).

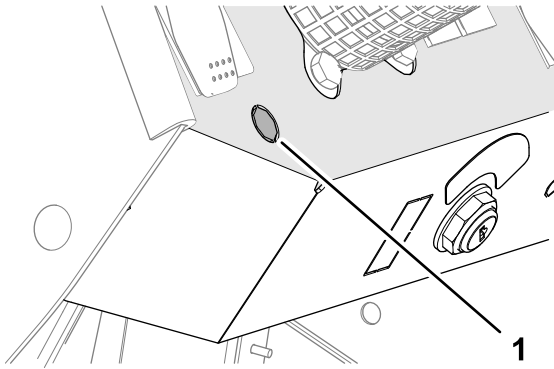


Figure 7

g349044

1. Knock-out plug (dash panel)

2. Remove any burrs from the hole.
3. Thread the jam nut onto the horn switch (Figure 8).

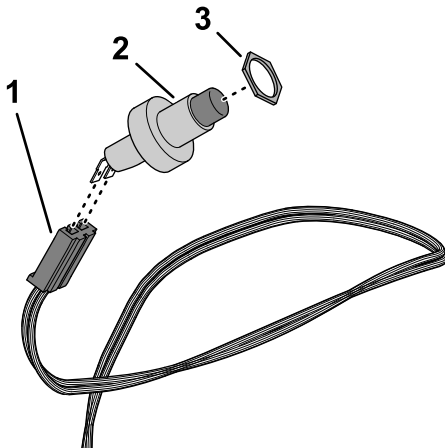


Figure 8

g349010

1. 2-socket connector (labeled HORN SWITCH—kit wire harness)
2. Horn switch
3. Jam nut

4. Plug the horn switch into the 2-socket connector labeled HORN SWITCH of the kit wire harness (Figure 8).
5. From the bottom of the panel, insert the switch through the hole (Figure 9).

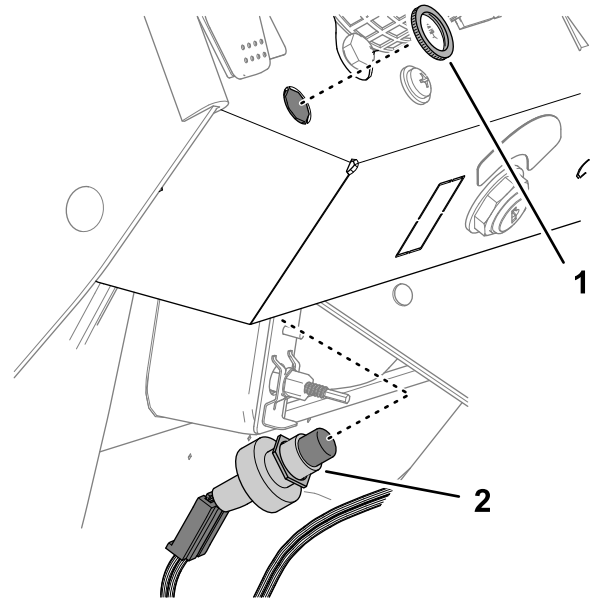


Figure 9

g349008

1. Knurled nut
2. Horn switch

6. If needed, adjust the jam nut to position so that you expose enough threads of the horn switch to install the knurled nut (Figure 9).
7. Secure the horn switch to the dash panel with the knurled nut (Figure 9).

# 4

## Installing the Horn

### Parts needed for this procedure:

1	Horn
1	Capscrew (5/16 x 3/4 inch)
1	Flange locknut (5/16 inch)

### Procedure

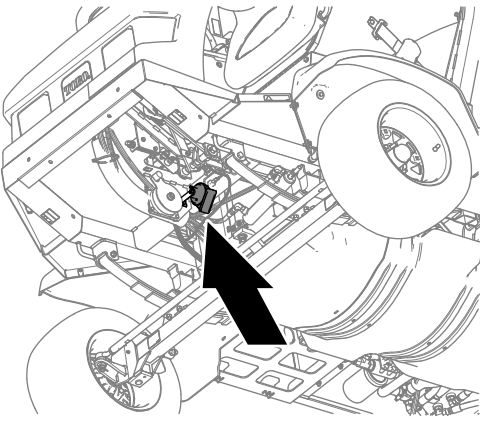
1. Assemble the bracket of the horn to the clutch plate (Figure 10) with a capscrew (5/16 x 3/4 inch) and a flange locknut (5/16 inch).

# 5

## Installing the Kit Wire Harness

Parts needed for this procedure:

6	Cable ties
---	------------



g348995

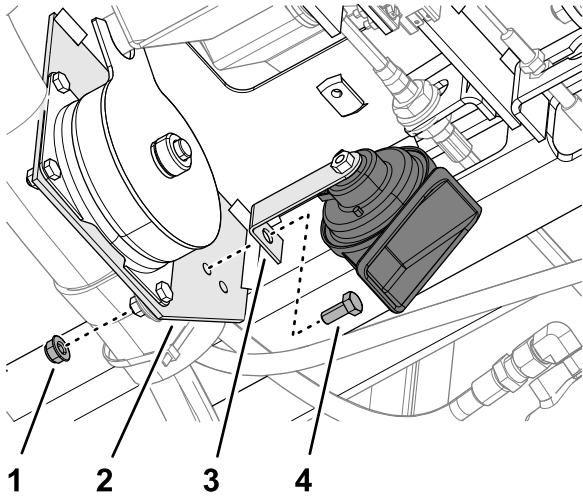


Figure 10

g348987

1. Flange locknut (5/16 inch)
  2. Clutch plate
  3. Bracket (horn)
  4. Capscrew (5/16 x 3/4 inch)
- 
2. Torque the capscrew and locknut to 1978 to 2542 N·cm (175 to 225 in-lb).

## Routing the Harness through the Floor

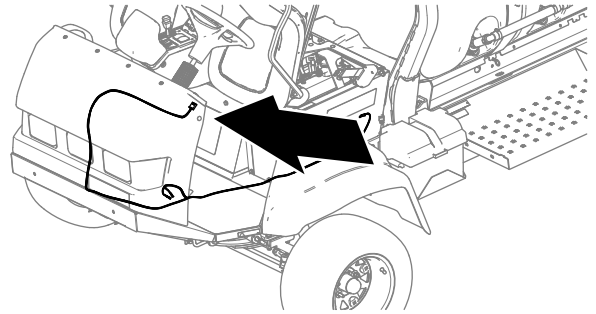


Figure 11

g349080

1. Route the kit wire harness across the bottom of the dash, and down along the machine wire harness (Figure 12).

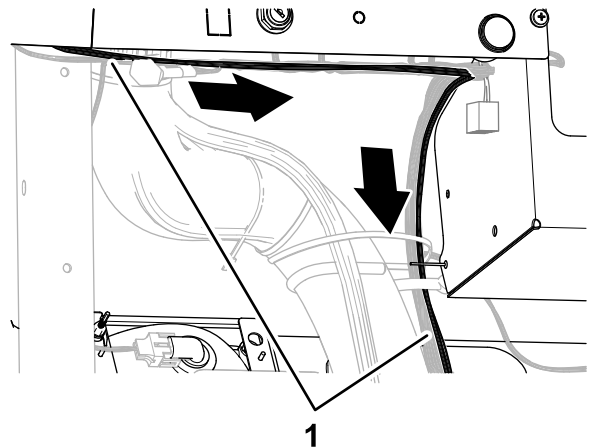
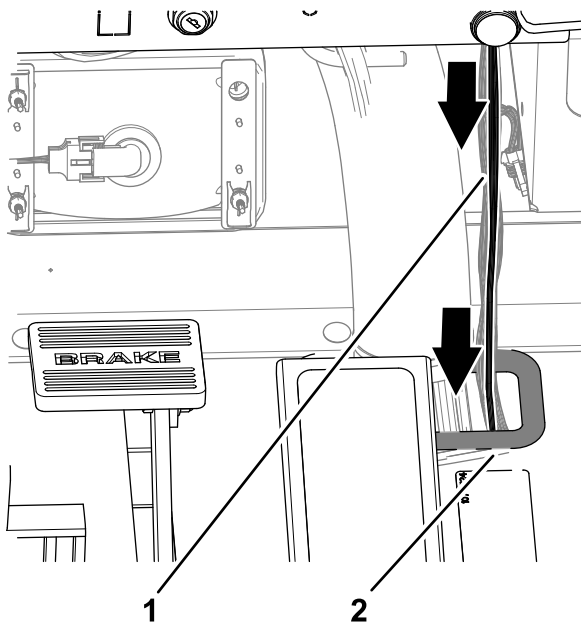


Figure 12

g349079

1. Kit wire harness
- 
2. Route the kit wire harness through the grommet in the floor plate (Figure 12).



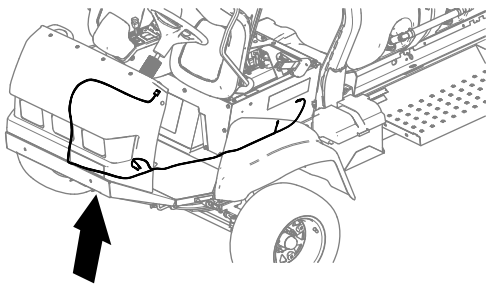
**Figure 13**

g349078

1. Kit wire harness
2. Grommet (floor plate)

3. Secure the kit wire harness to the machine wire harness with 2 cable ties.

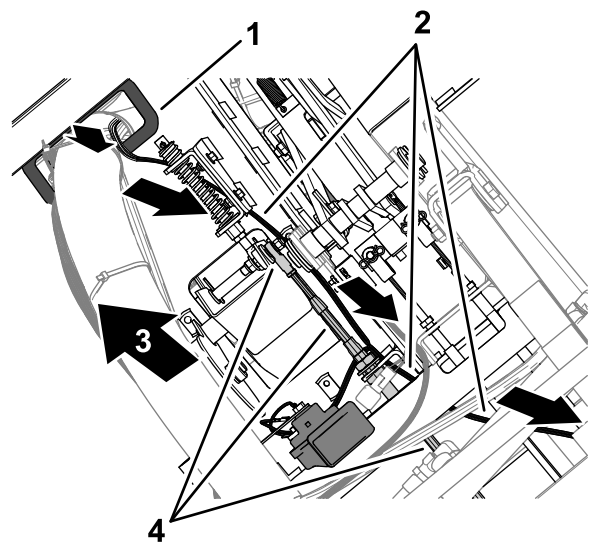
## Connecting the Harness to the Horn



**Figure 14**

g351629

1. Route the kit wire harness rearward, along the traction-control cable ([Figure 15](#)).

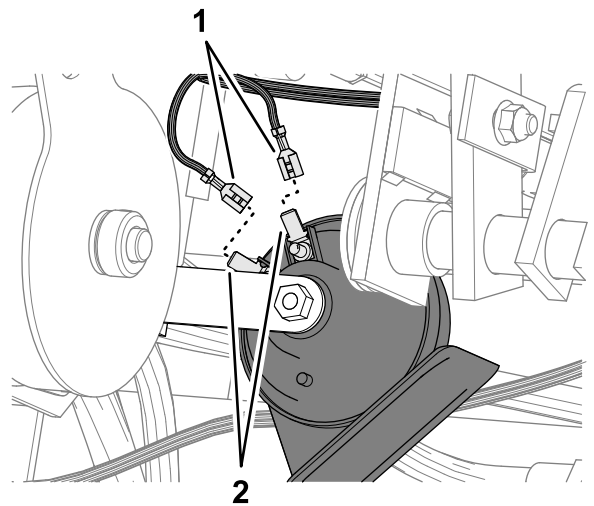


**Figure 15**

g349095

1. Floor-plate grommet
2. Kit wire harness
3. Front of the machine
4. Traction-control cable

2. Route the 2 wires with the spade-terminal sockets to the horn ([Figure 16](#)).



**Figure 16**

g349092

1. Spade-terminal sockets (HORN + or HORN —kit wire harness)
2. Spade terminals (horn)

3. Plug the terminal sockets labeled HORN + and HORN – into the spade terminals of the horn ([Figure 16](#)).

**Note:** Either wire terminal socket can connect to either horn terminal.

## Routing the Harness to the Electrical Panel

1. At the left side of the radiator, route connectors labeled OPTIONS POWER and HORN GROUND of the kit wire harness up and rearward, pushing the connectors through the overlapping foam blocks (Figure 17).

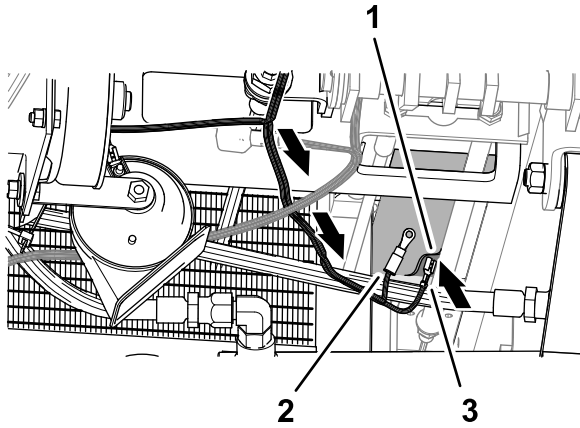


Figure 17

g351608

1. Overlapping foam blocks
2. Connector (labeled OPTIONS POWER)
3. Connector (labeled HORN GROUND)

2. Secure the kit wire harness to the chassis with 2 cable ties.
3. Pull the kit wire harness toward the fuse block as shown in Figure 18.

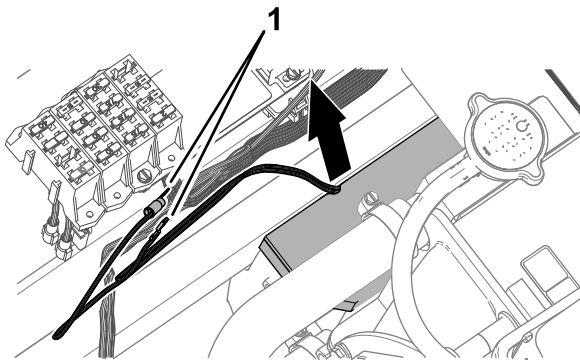


Figure 18

g351609

1. Connectors (labeled OPTIONS POWER and HORN GROUND)

## Connecting the Kit Wire Harness to the Ground Block and Fuse Block

Customer supplied part: Fuse (10 A)—fast-acting ATC/ATO blade type

1. Remove one terminal screws from the ground block (Figure 19).

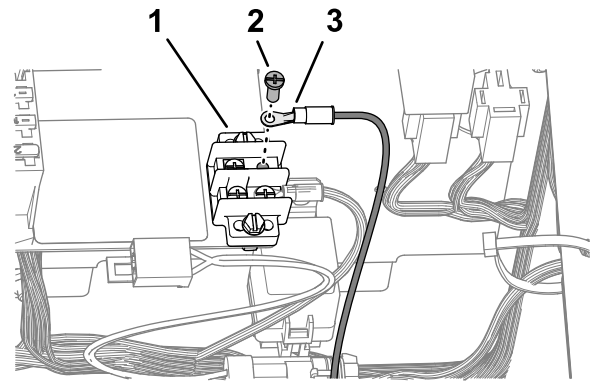


Figure 19

g349094

1. Ground block
2. Ring terminal (labeled HORN GROUND—kit wire harness)
3. Terminal screw

2. Install the ring terminal labeled HORN GROUND of the kit wire harness to the ground block with the terminal screw (Figure 19).
3. Plug the insulated spade connector labeled OPTIONS POWER of the fuse block into the spade terminal labeled HORN POWER of the kit wire harness (Figure 20).

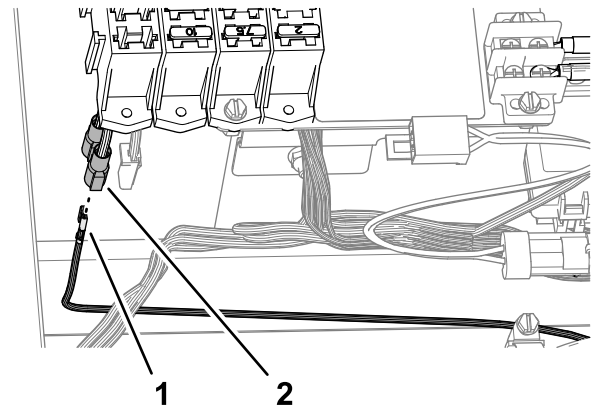


Figure 20

g349093

1. Spade-terminal socket (labeled HORN POWER—kit wire harness)
2. Insulated spade connector (labeled OPTIONS POWER—fuse block)

4. Secure the kit wire harness to the machine wire harness with 2 cable ties.
5. Insert the fuse (10 A) into the fuse block slot for the OPTIONS POWER connector (Figure 21).

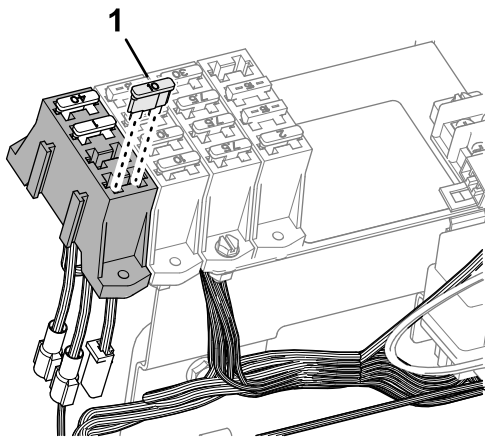


Figure 21

g349323

1. Fuse (10 A)

6. Secure the kit wire harness to the machine wire harness with 2 cable ties.
7. Rotate the seats down.

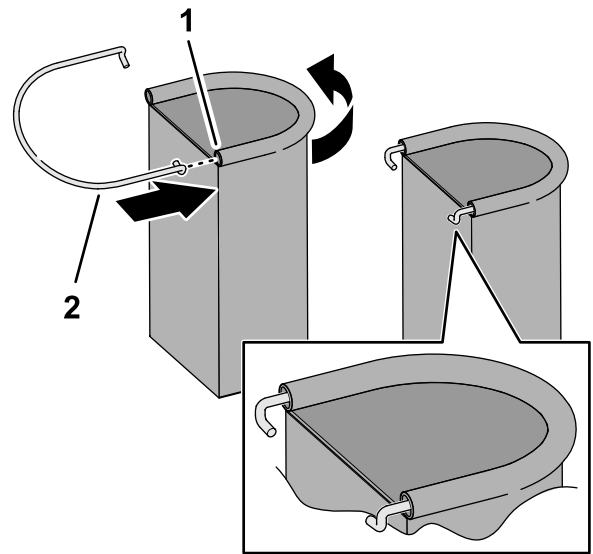


Figure 22

g361783

1. Hoop rod
2. Sleeve (PPE storage bag)

2. Install the mount bracket to the rollbar tube (Figure 23) with a U-bolt and 2 flange locknuts (3/8 inch).

**Note:** Ensure that the bracket location does not cover the rollbar decals.

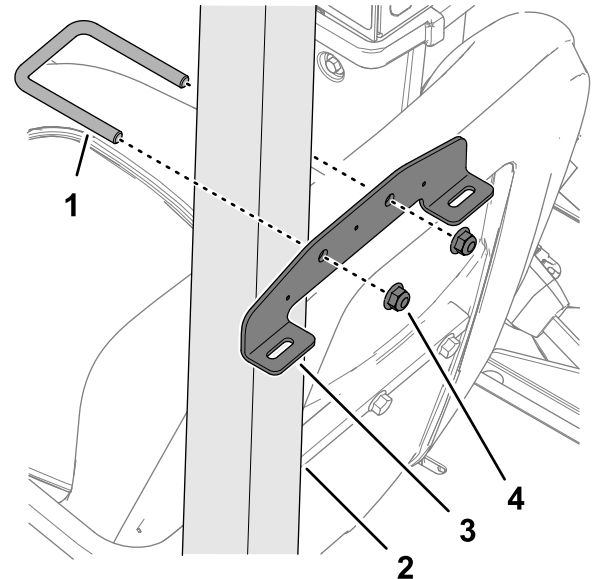


Figure 23

g366051

1. U-bolt
2. Rollbar tube
3. Mount bracket
4. Flange locknut (3/8 inch)

3. Insert the hooks of the hoop rod into the slots in the mount bracket (Figure 24).

# 6

## Installing the Personal Protective Equipment Storage Bag

### Parts needed for this procedure:

1	PPE storage bag
1	Hoop rod
1	Mount bracket
1	U-bolt
2	Flange locknut (3/8 inch)

### Procedure

1. Insert a hoop rod into the sleeve of the PPE storage bag as shown in Figure 22.

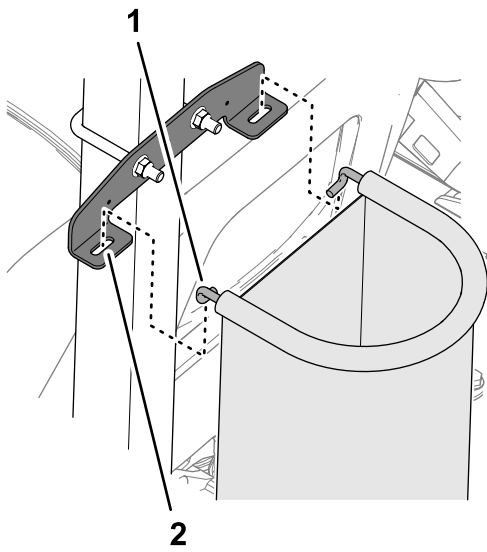


Figure 24

g366052

1. Hook (hoop rod)
2. Slot (mount bracket)

2. Clean the truss tube of the boom at the area where you measured in step 1.
- Note:** Ensure that the tube surface is free of dirt, grease, or other foreign material.
3. Remove the backing from the folding boom decal (104-8904), and adhere it to the truss tube of the boom (Figure 25).
  4. Repeat steps 1 through 3 at the other boom.

## Applying the Tank Contents-Slate Decal

Apply the erasable tank contents-slate decal (119-9434) onto the ROPS bar to install.

**Note:** The magnetic backing of the contents-slate decal allows it to affix to any ferrous metal surface. Position the tank contents-slate decal on the roll bar behind the operator's seat.

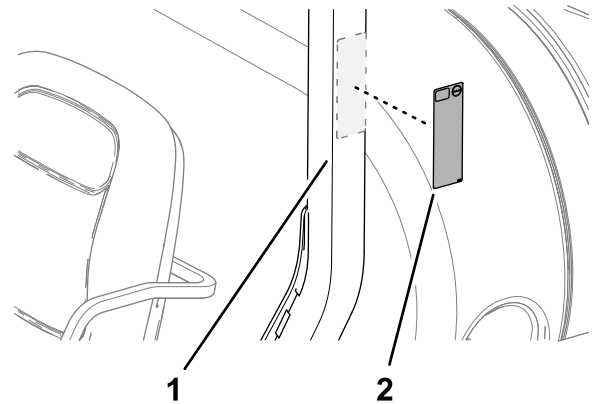


Figure 26

g349260

1. Roll bar
- 2.

# 7

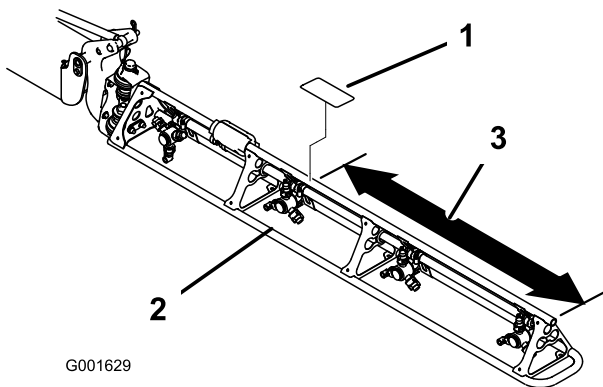
## Installing the Decals

Parts needed for this procedure:

2	Folding boom decal (104-8904)
1	Tank contents-slate decal (119-9434)
1	Regulatory decal

## Applying the Folding Boom Decals

1. Measure from the end of the booms as shown in Figure 25.



G001629

Figure 25

g001629

1. Folding boom decal (104-8904)
2. Boom
3. Measure 90 cm (35-1/2 inches)

## Applying the Regulatory Decal

1. Clean the surface of the step below the model-serial plate and the emissions decal.

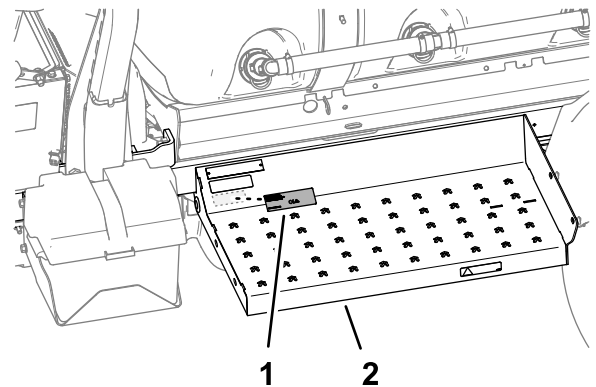


Figure 27

g349263

1. Regulatory decal
2. Step

2. Remove the backing from the regulatory decal, and adhere it to the step.
3. Adhere the regulatory decal below the emissions decal.



**Count on it.**