



Count on it.

Parts Catalog

Rear Tine Tiller

Model No. 58603—Serial No. 321000001 and Up



Ordering Replacement Parts

To order replacement parts, please supply the part number, the quantity, and the description of each part desired.

Understanding Reference Numbers

Each identified part in an illustration has a reference number. The reference number for a part also appears in the parts list, along with other information about the part.

This catalog uses two special reference number formats, one to indicate parts in a service assembly and another to indicate the quantity of a given part in an illustration.

Service Assembly Reference Numbers

Parts in service assemblies have reference numbers in the form a:b. The a represents the reference number of the entire service assembly and the b represents a sequential number unique to each part within the service assembly.

For example, a wheel assembly might be identified by reference number 6, the tire by 6:1, the valve by 6:2, and the wheel by 6:3. When you order the assembly identified by reference number 6, you receive all parts identified by reference numbers 6:1, 6:2, and 6:3. However, you may also order any part individually. Reference numbers of this type appear in illustration and in parts lists.

Reference Numbers Indicating Quantity

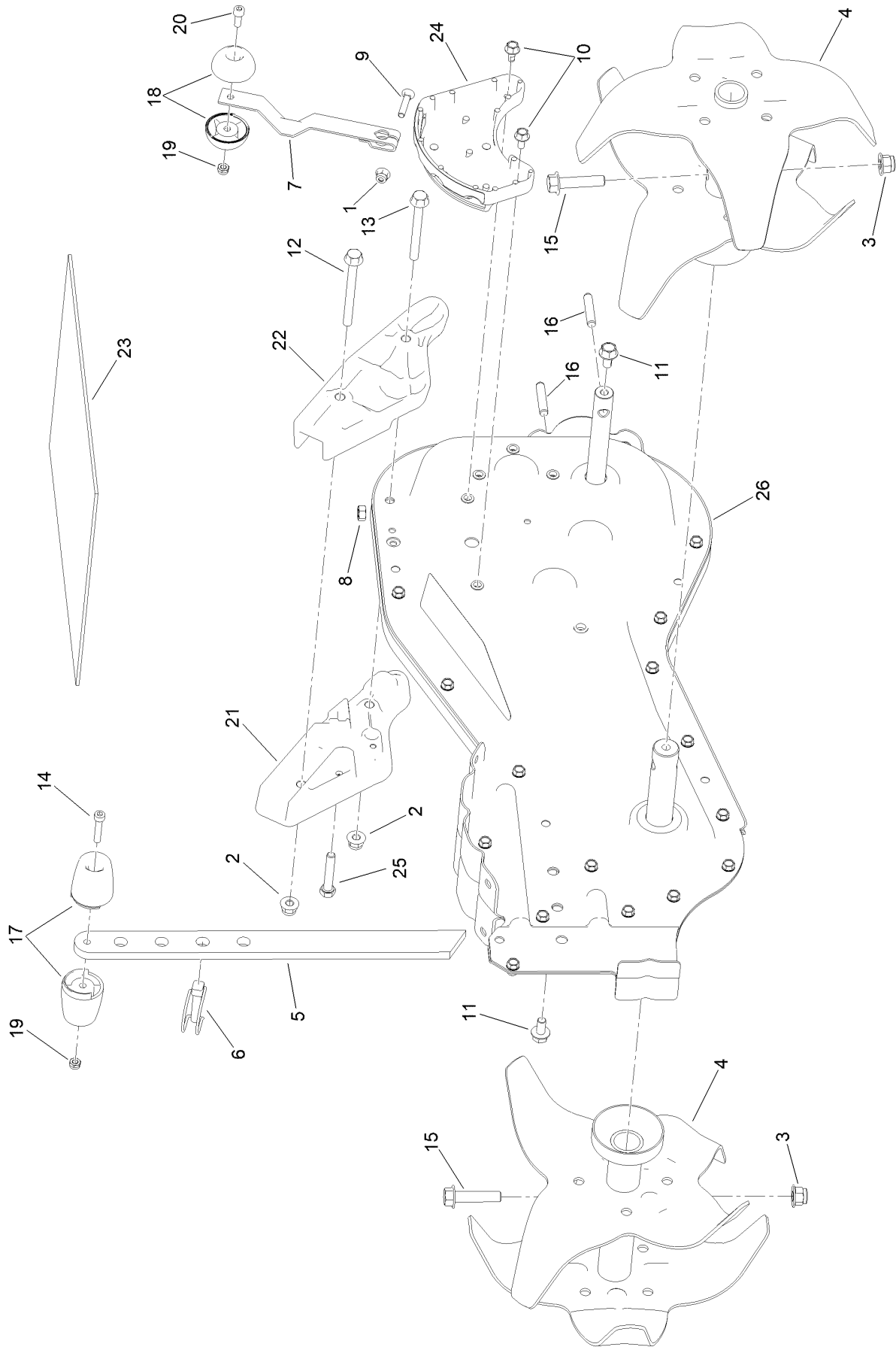
In an illustration, if a reference number indicates more than one part, the reference number has the form nX y. The n represents the quantity of the part, the X is the multiplication symbol, and the y represents the reference number.

For example, in an illustration, the reference number 2X 37 means that two of the parts identified by reference number 37 are indicated.

Contents

Tines and Transmission Assembly 4
Wheels and Shield Assembly 6
Handles and Controls Assembly 8
Engine Assembly 10

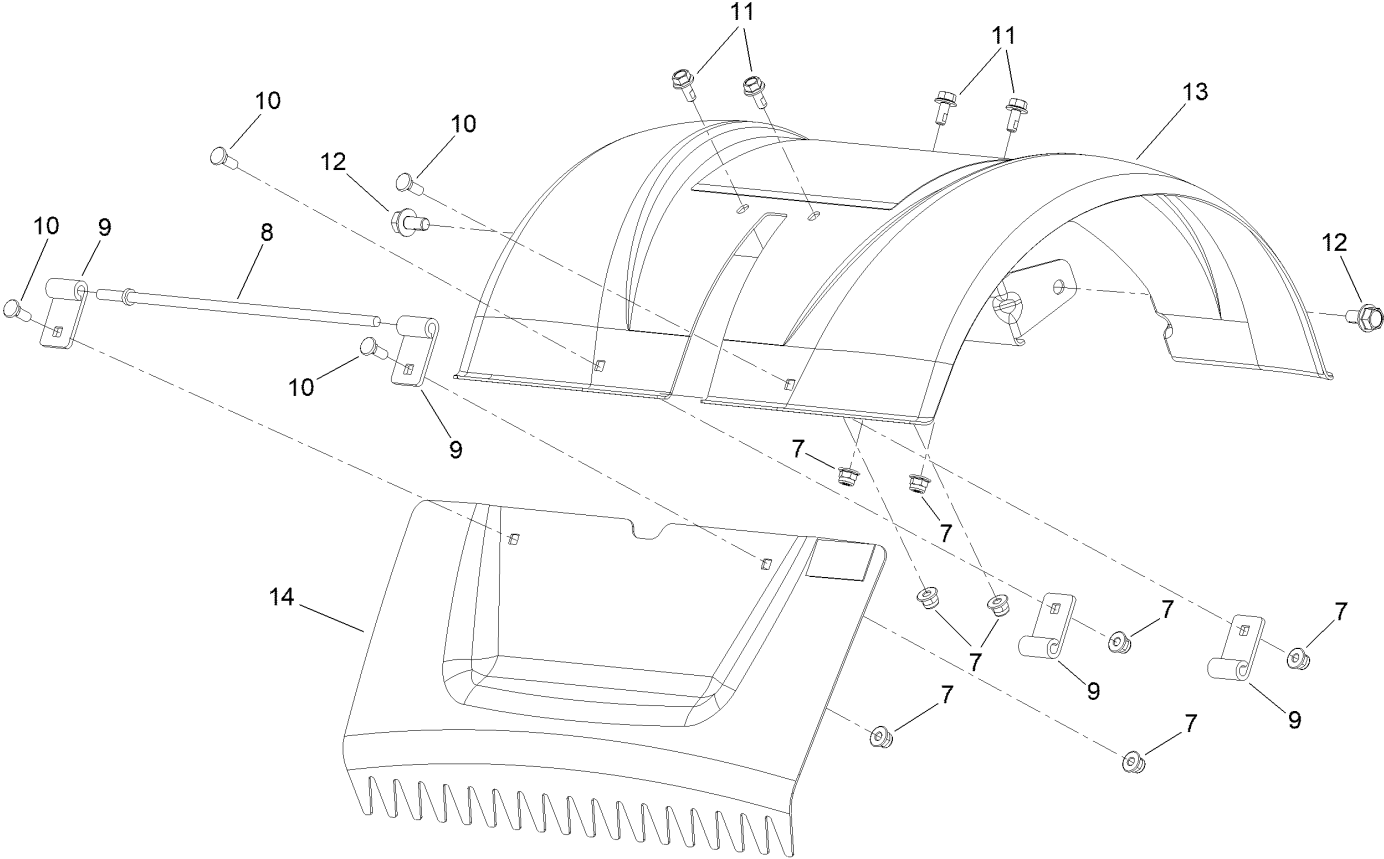
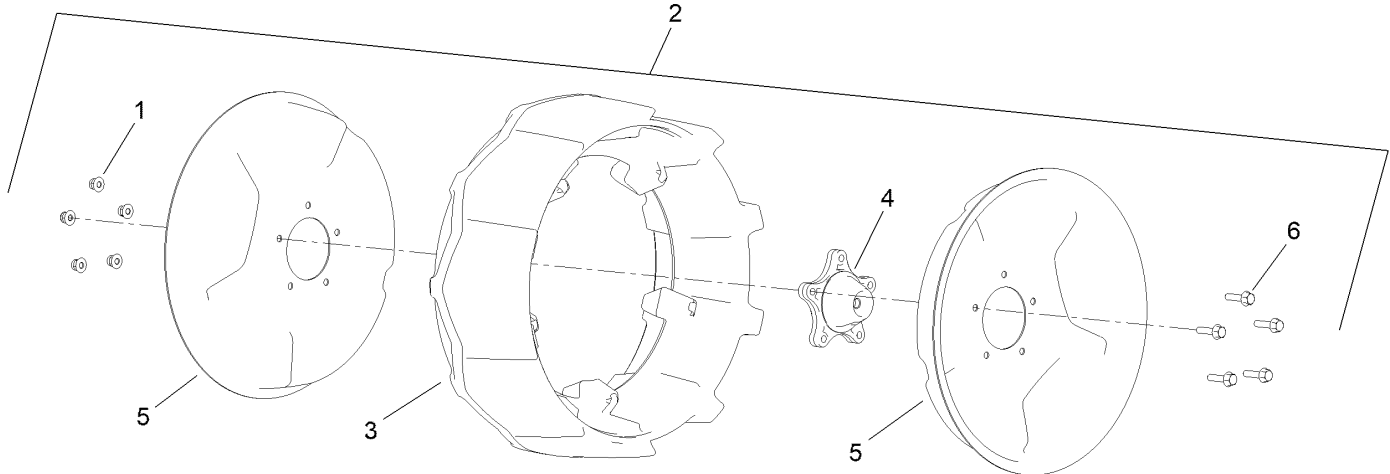
Tines and Transmission Assembly



Tines and Transmission Assembly (continued)

<i>Ref.</i>	<i>Part Number</i>	<i>Qty.</i>	<i>Description</i>	<i>Ref.</i>	<i>Part Number</i>	<i>Qty.</i>	<i>Description</i>
1	144-5022	1	Nut-Hex	14	144-5077	1	Screw-SHCS
2	144-4789	2	Nut-Hex	15	144-5078	2	Screw-HHF
3	144-4817	2	Nut-Hex	16	144-5080	2	Pin-Dowel
4	144-5030	2	Tine	17	144-4946	2	Handle
5	144-5038	1	Stake-Drag	18	144-5085	2	Handle-Shift
6	144-5042	1	Pin-Lock	19	144-5086	2	Nut-Hex
7	144-5043	1	Arm-Shifter	20	144-5087	1	Screw-SHCS
8	144-4939	1	Nut-Hex	21	144-5091	1	Mount-Handlebar, Left
9	144-5070	1	Screw-CRG	22	144-5101	1	Mount-Handlebar, Right
10	144-5071	2	Screw-HF	23	144-5093	1	Bag-Manual
11	144-5072	2	Screw-HF	24	144-5095	1	Shift Selector
12	144-5073	1	Screw-HF	25	144-5100	1	Screw-HHCS
13	144-5074	1	Screw-HF	26	147-4291	1	Transmission ASM

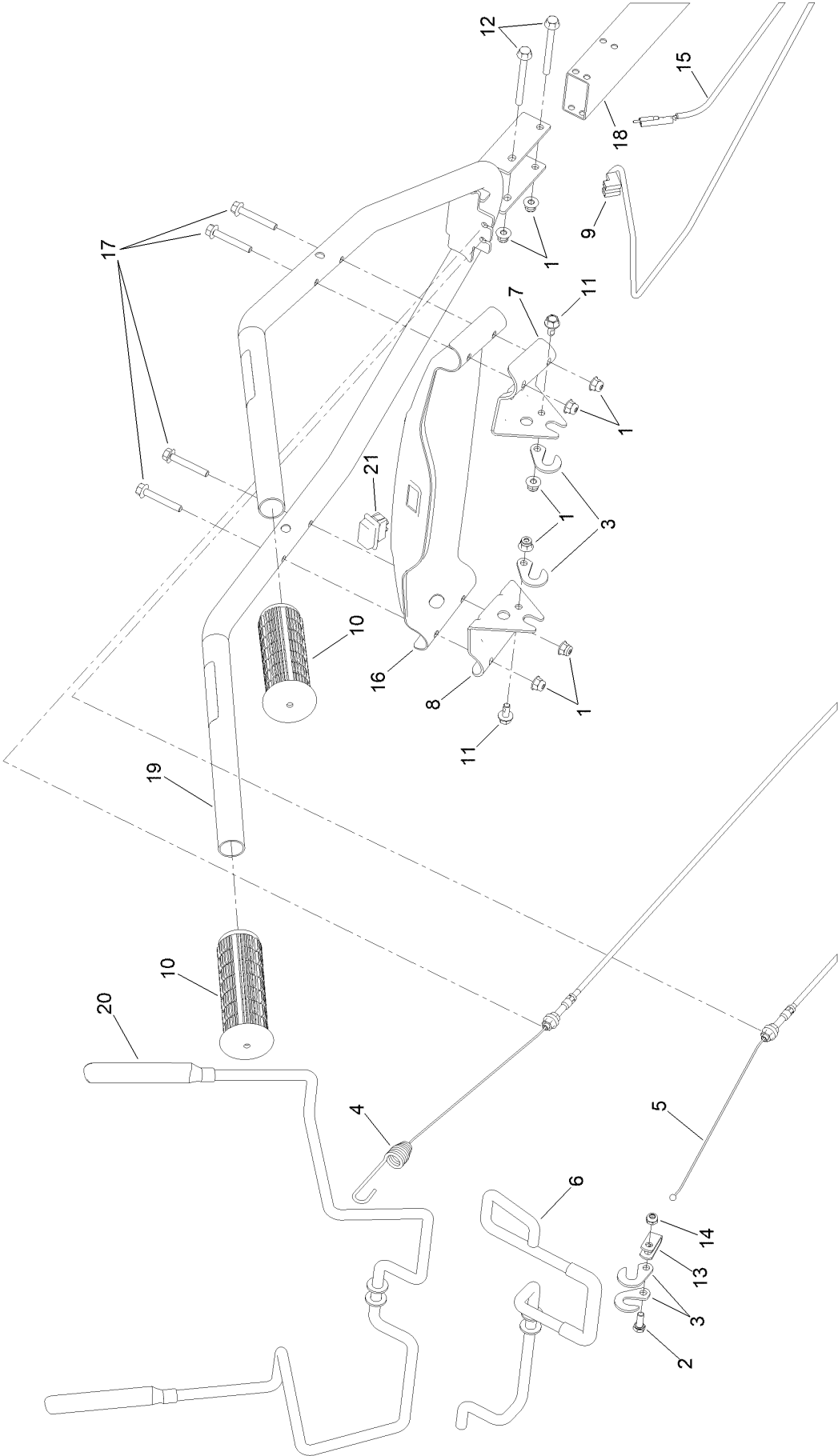
Wheels and Shield Assembly



Wheels and Shield Assembly (continued)

<i>Ref.</i>	<i>Part Number</i>	<i>Qty.</i>	<i>Description</i>	<i>Ref.</i>	<i>Part Number</i>	<i>Qty.</i>	<i>Description</i>
1	144-5022	5	Nut-Hex	8	144-5023	1	Rod-Hinge
2	144-5024	2	Wheel	9	144-5053	4	Bracket-Hinge
3	144-5025	1	Tire	10	144-5054	4	Screw-CRG
4	144-5026	1	Hub	11	144-5071	4	Screw-HF
5	144-5027	2	Rim-Half	12	144-5072	2	Screw-HF
6	144-5079	5	Screw-HHF	13	144-5090	1	Beaver Tail
7	144-5022	8	Nut-Hex	14	144-5098	1	Shield-Tine

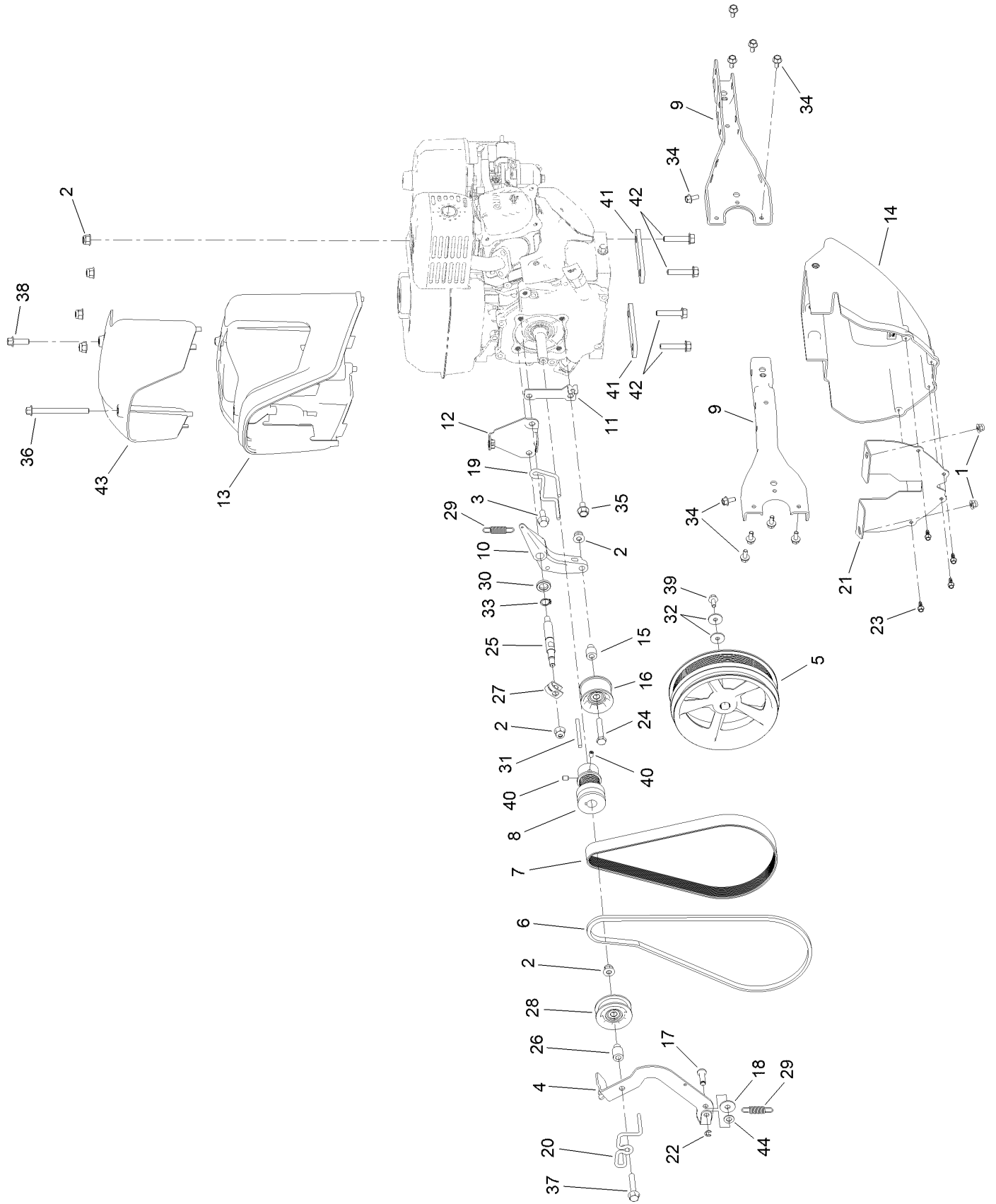
Handles and Controls Assembly



Handles and Controls Assembly (continued)

<i>Ref.</i>	<i>Part Number</i>	<i>Qty.</i>	<i>Description</i>	<i>Ref.</i>	<i>Part Number</i>	<i>Qty.</i>	<i>Description</i>
1	144-5022	8	Nut-Hex	12	144-5075	2	Screw-HF
2	144-4981	1	Screw-HHCS	13	144-5082	1	Yoke-Reverse Bail
3	144-5028	4	Hook	14	144-5086	1	Nut-Hex
4	144-5039	1	Cable-Forward	15	144-5094	1	Wiring Harness-Engine
5	144-5040	1	Cable-Reverse	16	144-4953	1	Dash-Tiller
6	144-5044	1	Bail-Reverse	17	144-4956	4	Screw-HHF
7	144-5045	1	Bail-Right	18	144-5096	1	Tube
8	144-5046	1	Bail- Left	19	144-5097	1	Handlebar
9	144-5051	1	Harness-Wiring	20	144-5099	1	Lever-Forward
10	144-5055	2	Grip	21	144-4960	1	Switch
11	144-5071	2	Screw-HF				

Engine Assembly



Engine Assembly (continued)

<i>Ref.</i>	<i>Part Number</i>	<i>Qty.</i>	<i>Description</i>	<i>Ref.</i>	<i>Part Number</i>	<i>Qty.</i>	<i>Description</i>
1	144-5022	2	Nut-Hex	23	144-5060	4	Screw-HHF
2	144-4789	7	Nut-Hex	24	144-5000	1	Screw-HHCS
3	144-4784	1	Screw-HHF	25	144-5061	1	Stud
4	144-5029	1	Arm-Reverse	26	144-5062	1	Bushing-Reverse
5	144-5031	1	Pulley-Transmission	27	144-5063	1	Yoke
6	144-5032	1	Belt-V	28	144-5064	1	Pulley-Reverse
7	144-5033	1	Belt-Poly	29	144-5065	2	Spring-Arm
8	144-5034	1	Pulley-Engine	30	144-5066	1	Bushing-Arm
9	144-5035	2	Mount-Engine	31	144-5067	1	Key
10	144-5036	1	Arm-Forward	32	144-5068	2	Washer-Flat
11	144-5037	1	Bracket-Cable	33	144-5069	1	Ring-Retaining
12	144-5041	1	Bracket-Engine	34	144-5071	10	Screw-HF
13	144-5047	1	Guard-Upper	35	144-5072	1	Screw-HF
14	144-5048	1	Guard-Lower	36	144-5076	1	Screw-HF
15	144-5049	1	Bushing-Forward Idler	37	144-5081	1	Screw-HHF
16	144-5050	1	Pulley-Forward Idler	38	144-5083	1	Screw-HF
17	144-5052	1	Pin-Clevis	39	144-5084	1	Screw-HHF
18	144-4936	1	Washer-Flat	40	144-4794	2	Screw-Set
19	144-5056	1	Guide-Forward	41	144-5088	2	Plate-Engine
20	144-5057	1	Guide-Reverse	42	144-5089	4	Screw-HHF
21	144-5058	1	Guard-Lower Pulley	43	144-5092	1	Cover-Pulley
22	144-5059	1	Clip-Clevis	44	144-4958	1	Washer-Flat



Count on it.